



Heddlu Dyfed-Powys Police

CRIME TRENDS UPDATE May 2005

Contents:

Headline Statistics	2
Most Frequent Recorded Offences Profile	3
Recorded Crimes and Detection Rates	4
Domestic Burglaries and Detection Rates	5
Violent Crime and Detection Rates	6
Vehicle Crime and Detection Rates	7
Criminal Damage and Detection Rates	8
Drugs Statistics and Detection Rates	9
Section Level Sanction Detection Summary	10
Divisional Contribution to Targets	11
Domestic Incidents	15
Narrowing the Justice Gap	16
Road Traffic Collisions	17
PPAF Statutory Performance Indicator Summary	18

Heddlu Dyfed Powys Police: Corporate Services

Headline Statistics

DYFED-POWYS POLICE

APRIL - MAY 2005

Recorded Crime:

- Total Recorded Crime is down by 6% (-373 crimes) compared to the same period last year (SPLY) to stand at 5607 crimes. The monthly figure for May 2005 stands at 2,918 – a fall of 7% (-206 offences) on the same month in 2004, and 8% (+229 offences) up of the preceding month April 2005.
- Recorded detection performance has improved, with the total detection rate for the force at 38% (2148 detections) compared with 36% the previous year. The volume of total detections has decreased by 1% (-26 detections). The sanction detection rate stands at 32% (compared with 28% last year) with the volume increasing by 133 or 8%. This is consistent with the target of 31%.

Domestic Burglary:

- Total Domestic Burglary is down by 29% (-53 crimes) compared to the same period last year (SPLY) to stand at 129 crimes. The monthly figure for May 2005 stands at 77 – a fall of 9% (-8 offences) on the same month in 2004, but a 48% (+25 offences) increase on the preceding month April 2005.
- Recorded detection performance has improved, with the total detection rate for the force at 25% (32 detections) compared with 24% the previous year. The volume of total detections has decreased by 27% (-12) as a consequence of falling offences. The sanction detection rate stands at 24% (compared with 21% last year) with the volume falling by 18% (-7).

Violent Crimes:

- Total Violent crime is down by 10% (-170 crimes) compared to the same period last year (SPLY) to stand at 1503 crimes. The monthly figure for May 2005 stands at 795 – an fall of 14% (-130 offences) on the same month in 2004, but a 12% (+86 offences) increase on the preceding month April 2005.
- Recorded detection performance has improved, with the total detection rate for the force at 54% (817 detections) unchanged from the previous year. The volume of total detections has decreased by 10% (-91) as a consequence of falling offences. The sanction detection rate stands at 41% (compared with 36% last year) with the volume unchanged (+0.5%).

Vehicle Crime:

- Total Vehicle crime is down by 18% (-75 crimes) compared to the same period last year (SPLY) to stand at 354 crimes. The monthly figure for May 2005 stands at 193 – a fall of 10% (-22 offences) on the same month in 2004, but a 20% increase (+32 offences) on the preceding month April 2005.
- Recorded detection performance has improved, with the total detection rate for the force at 12% (43 detections) down from 15% the previous year. The volume of total detections has decreased by 33% (-22) as a consequence of falling offences. The sanction detection rate stands at 9% (compared with 13% last year) with the volume down considerably (-24 detections or 42%).

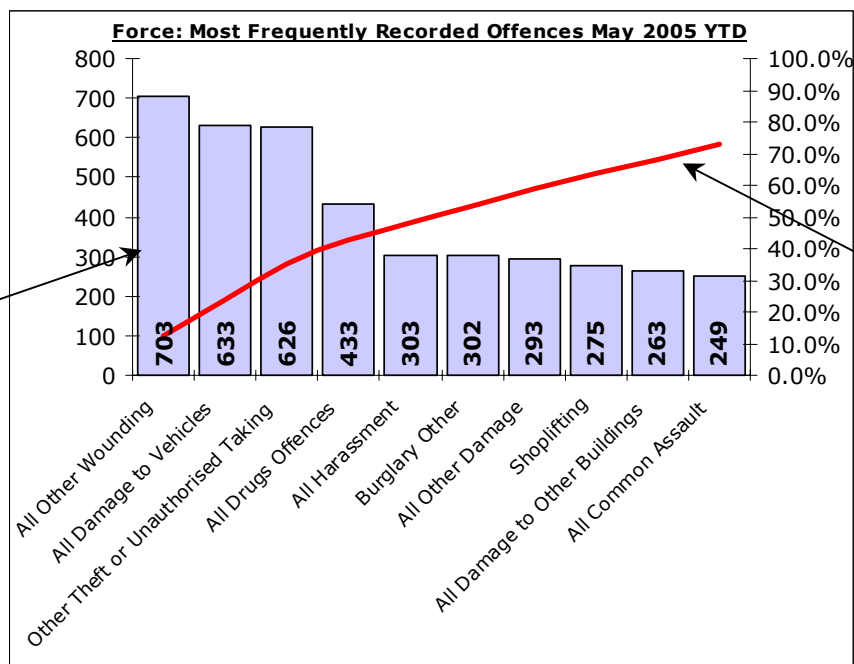
Criminal Damage:

- Total Criminal Damage is down by 10% (-153 crimes) compared to the same period last year (SPLY) to stand at 1410 crimes. The monthly figure for May 2005 stands at 748 – a fall of 11% (-90 offences) on the same month in 2004, but a 3% increase (+23 offences) on the preceding month April 2005.
- Recorded detection performance has improved, with the total detection rate for the force at 24% (342 detections) an increase on 21% recorded the previous year. The volume of total detections has decreased by 3% (-11) as a consequence of falling offences. The sanction detection rate stands at 19% (compared with 16% last year) with the volume down by 8% (-24 detections).

Most Frequent Recorded Offences Profile

DYFED-POWYS POLICE

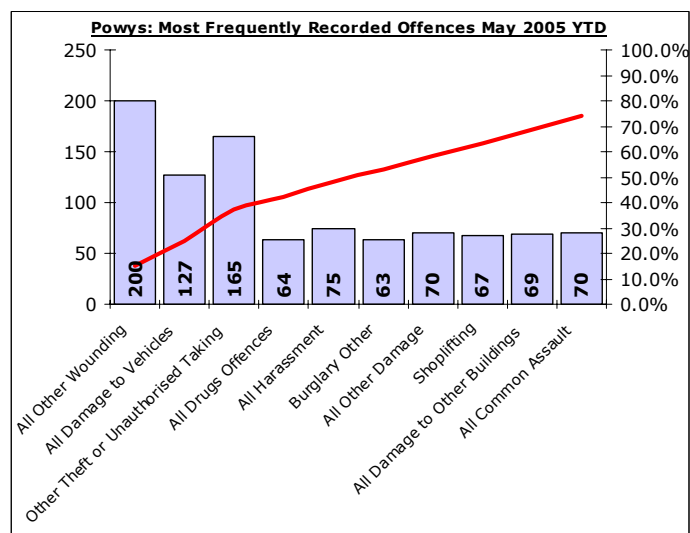
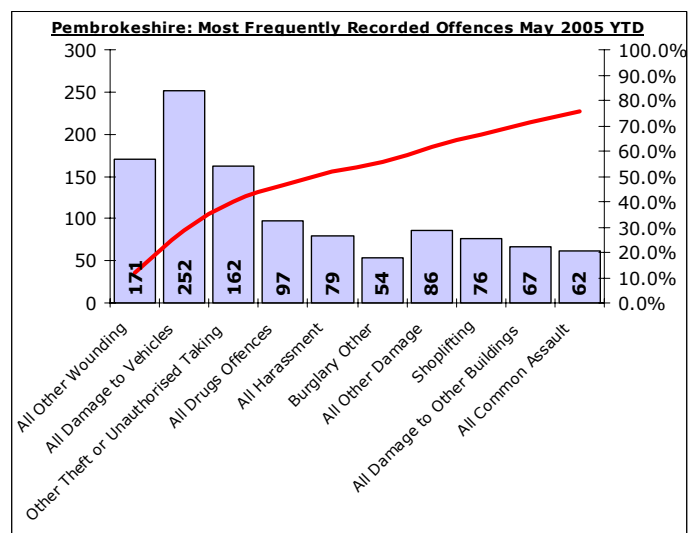
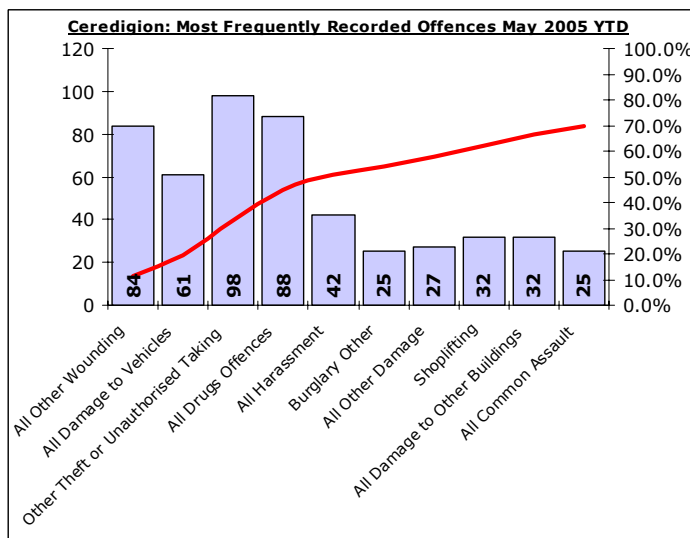
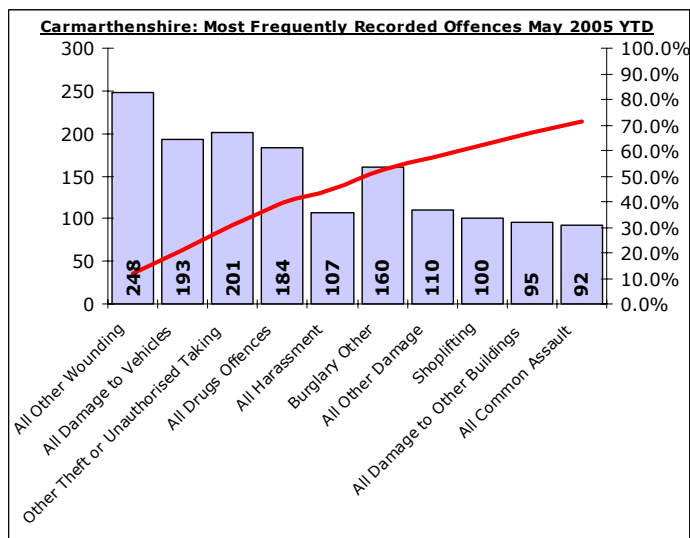
May 2005 (Note : Divisonal profiles in the same sequence as force most frequent categories)



Recorded offences in each category in order of volume.

(Note these can include a number of sub-categories)

The cumulative contribution of offence categories toward the total volume of offences recorded.

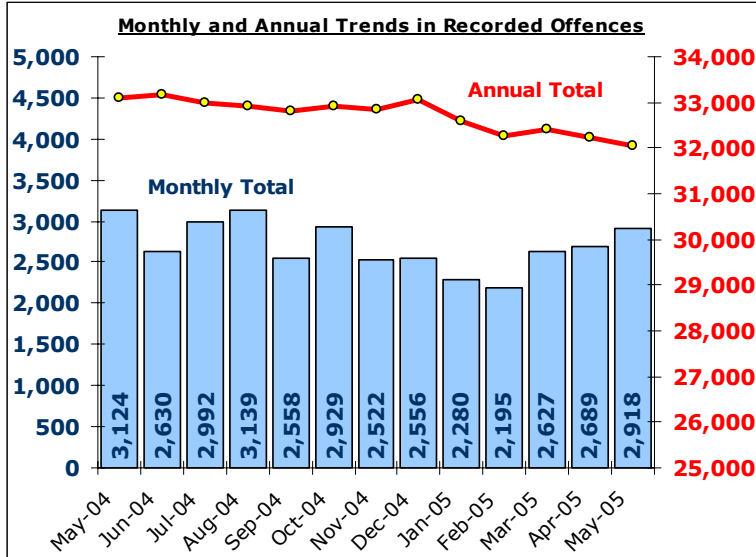


Total Recorded Crime

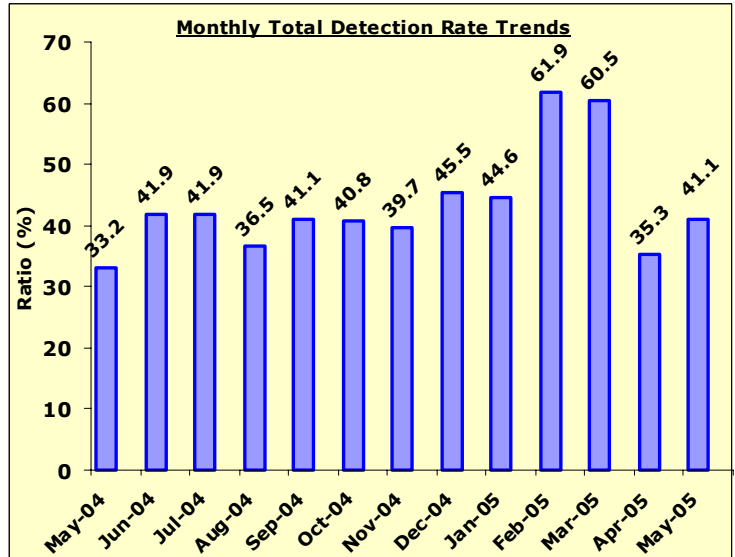
DYFED-POWYS POLICE

TARGET 2005/06 : NO TARGET

Recorded Crime Levels – May 2005

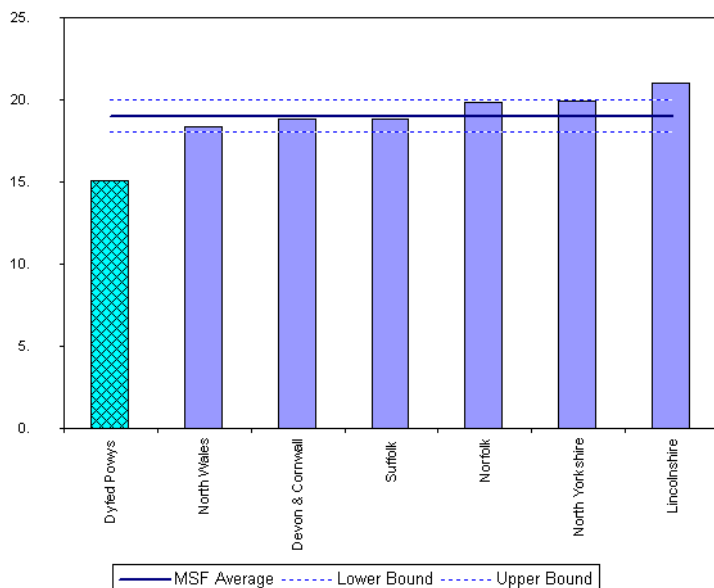


Total Monthly Detection Rates – May 2005

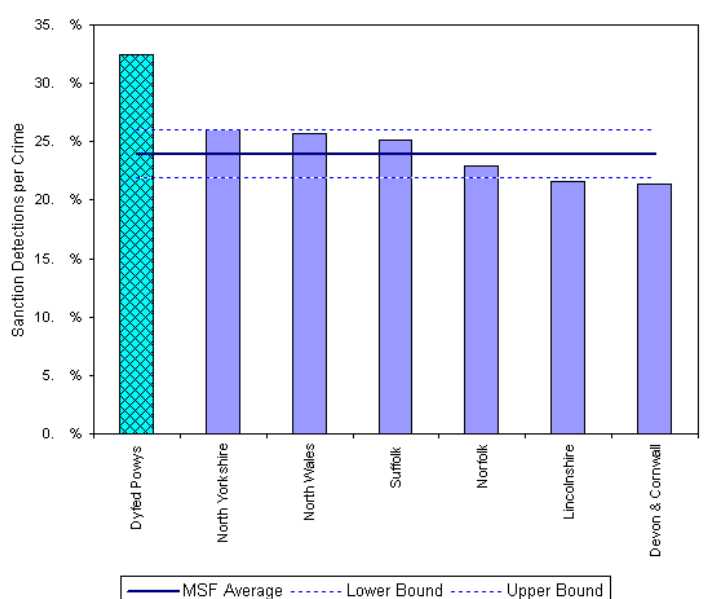


Total Recorded Crimes: May 2005 YTD	May 2005 YTD			Detection Rates		Annual Trends - SPLY		
	Crimes	Sanction Dets	Total Dets	Sanction %	Total %	Crimes SPLY	Change	% Change
FORCE	5,607	1,783	2,148	31.8%	38.3%	5,980	- 373	- 6.2%
CARMS	2,092	632	774	30.2%	37.0%	2,549	- 457	- 17.9%
CERED	738	271	313	36.7%	42.4%	769	- 31	- 4.0%
PEMBS	1,464	502	584	34.3%	39.9%	1,410	+ 54	+ 3.8%
POWYS	1,313	378	477	28.8%	36.3%	1,252	+ 61	+ 4.9%

MSF – Crimes per 1000 Residents 01 Feb 2005 – 30 Apr 2005



MSF – Sanction detections (annual): 01 May 2004 – 30 Apr 2005



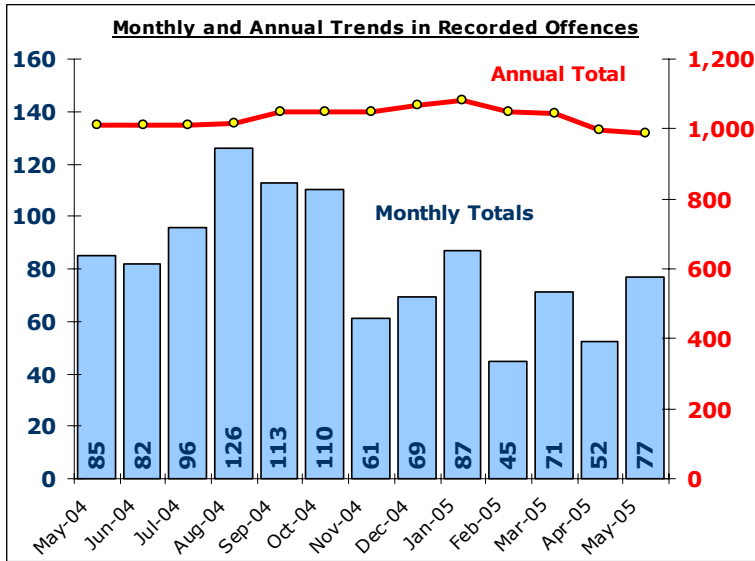
Bar chart MSF - Sanction Detections per Crime-Dyfed Powys-All Crime-01 May 2004 - 30 Apr 2005

Domestic Burglary

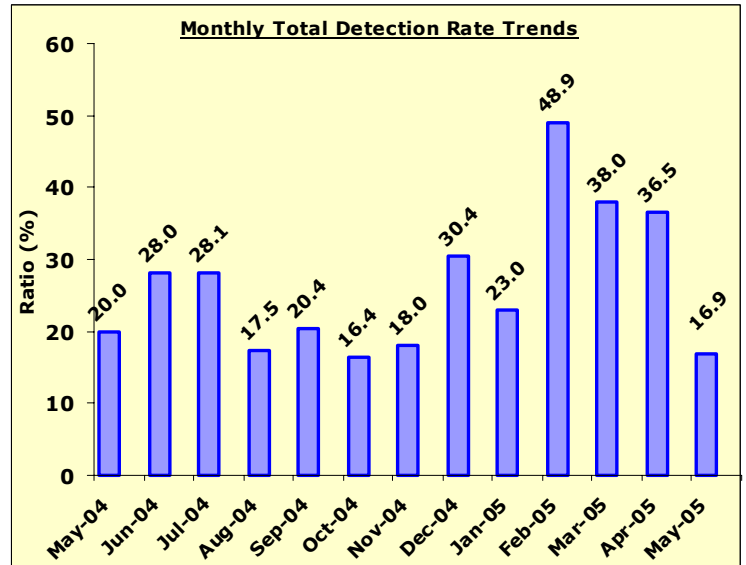
DYFED-POWYS POLICE

TARGET 2005/06 : 0% Increase in offences & 28% total detection rate

Recorded Crime Levels – April 2005

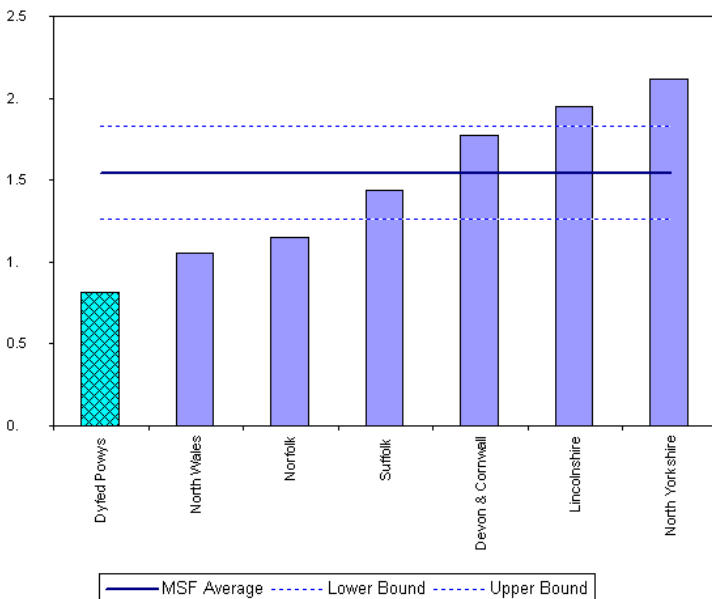


Total Monthly Detection Rates – April 2005

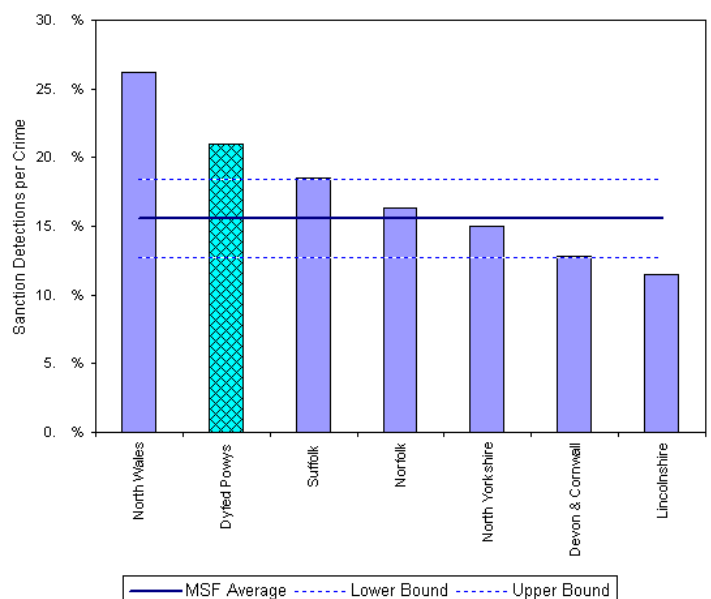


Total Domestic Burglary: May 2005 YTD	May 2005 YTD			Detection Rates		Annual Trends - SPLY		
	Crimes	Sanction Dets	Total Dets	Sanction %	Total %	Crimes SPLY	Change	% Change
FORCE	129	31	32	24.0%	24.8%	182	- 53	- 29.1%
CARMS	51	7	7	13.7%	13.7%	86	- 35	- 40.7%
CERED	10	3	3	30.0%	30.0%	16	- 6	- 37.5%
PEMBS	31	14	15	45.2%	48.4%	38	- 7	- 18.4%
POWYS	37	7	7	18.9%	18.9%	42	- 5	- 11.9%

MSF – Crimes per 1000 Residents
01 Feb 2005 – 30 Apr 2005



MSF – Sanction detections (annual):
01 May 2004 – 30 Apr 2005

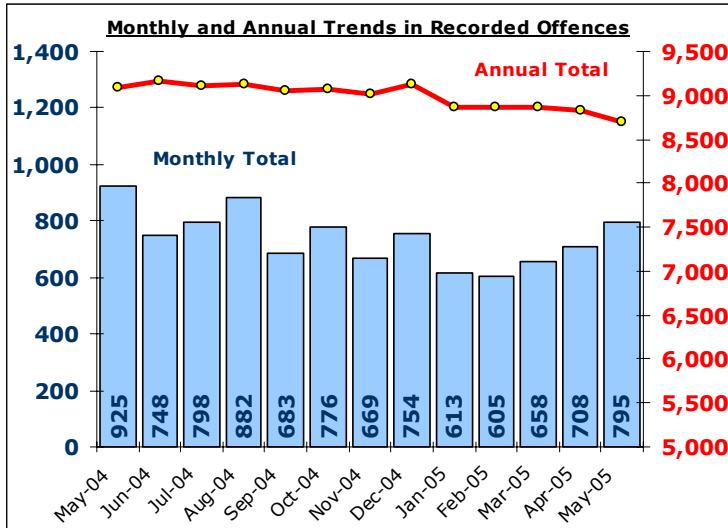


Total Violent Crime

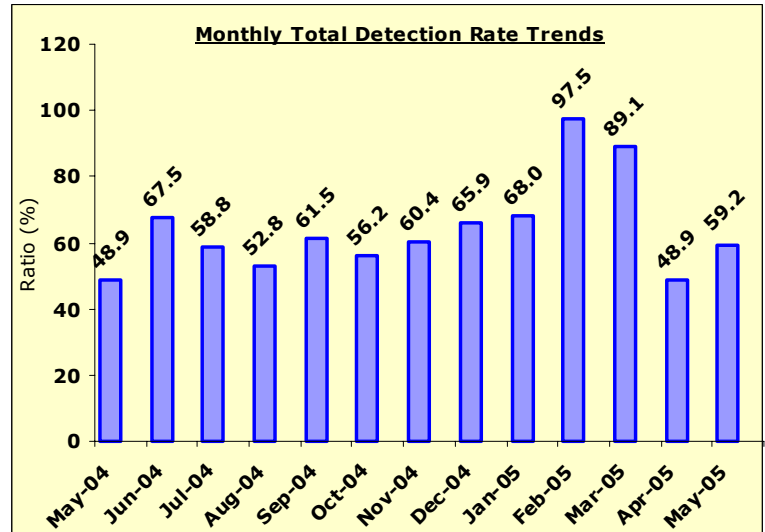
DYFED-POWYS POLICE

TARGET 2005/06 – 3% Reduction in offences & 60% total detection rate

Recorded Crime Levels – May 2005

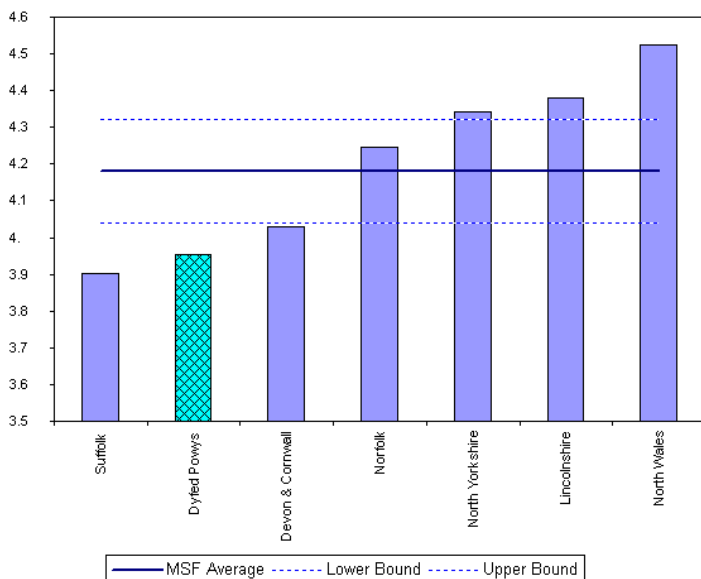


Total Monthly Detection Rates – May 2005

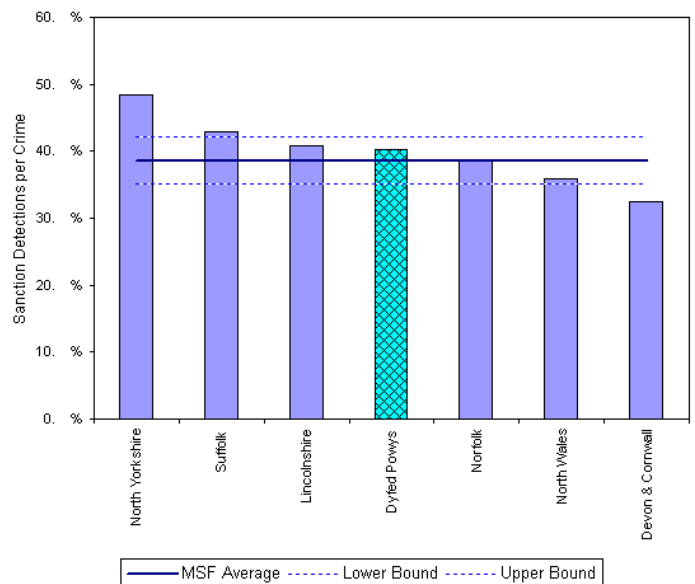


Total Violent Crimes: May 2005 YTD	May 2005 YTD			Detection Rates		Annual Trends - SPLY		
	Crimes	Sanction Dets	Total Dets	Sanction %	Total %	Crimes SPLY	Change	% Change
FORCE	1,503	608	817	40.5%	54.4%	1,673	- 170	- 10.2%
CARMS	534	213	294	39.9%	55.1%	695	- 161	- 23.2%
CERED	195	82	106	42.1%	54.4%	225	- 30	- 13.3%
PEMBS	358	157	207	43.9%	57.8%	428	- 70	- 16.4%
POWYS	416	156	210	37.5%	50.5%	325	+ 91	+ 28.0%

MSF – Crimes per 1000 Residents
01 Feb 2005 – 30 Apr 2005



MSF – Sanction detections (annual):
01 May 2004 – 30 Apr 2005



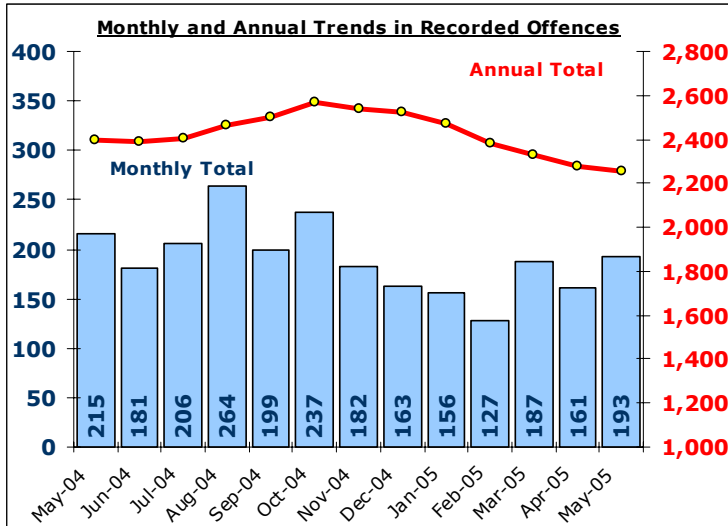
Bar chart MSF - Sanction Detections per Crime-Dyfed Powys-Violent Crime-01 May 2004 - 30 Apr 2005

Total Vehicle Crime

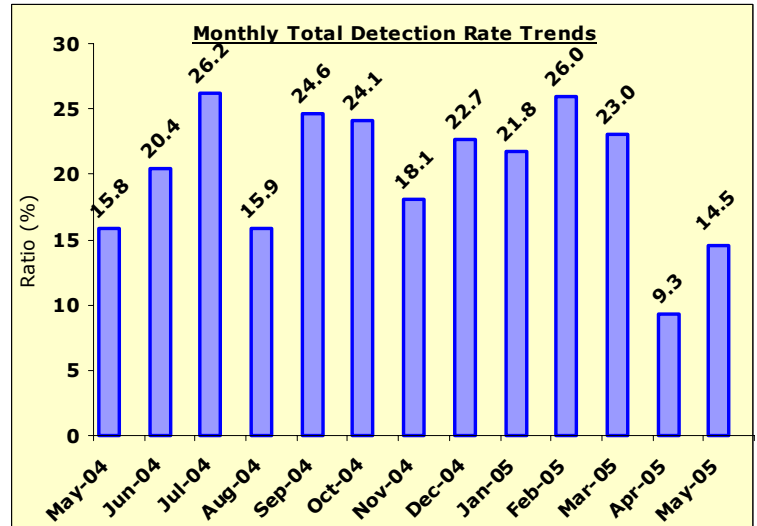
DYFED-POWYS POLICE

TARGET 2005/06 : 0% Increase in offences & 20% total detection rate

Recorded Crime Levels – May 2005

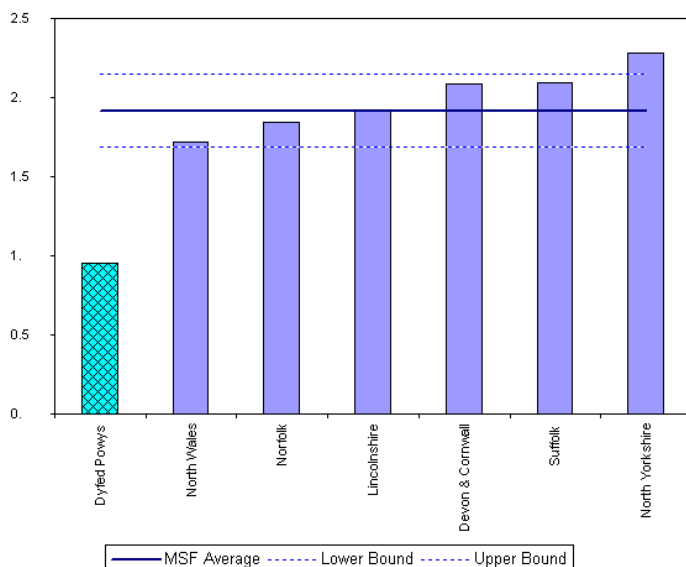


Total Monthly Detection Rates – May 2005

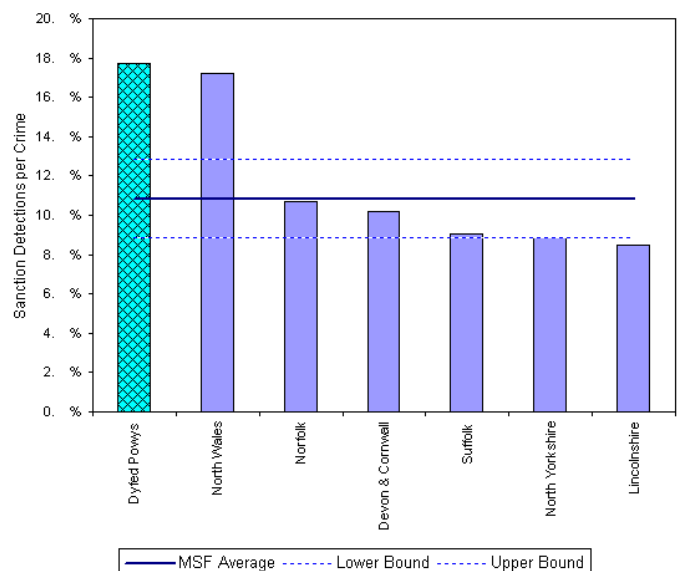


Total Vehicle Crimes: May 2005 YTD	May 2005 YTD			Detection Rates		Annual Trends - SPLY		
	Crimes	Sanction Dets	Total Dets	Sanction %	Total %	Crimes SPLY	Change	% Change
FORCE	354	33	43	9.3%	12.1%	429	- 75	- 17.5%
CARMS	145	12	15	8.3%	10.3%	213	- 68	- 31.9%
CERED	42	6	7	14.3%	16.7%	31	+ 11	+ 35.5%
PEMBS	89	10	12	11.2%	13.5%	98	- 9	- 9.2%
POWYS	78	5	9	6.4%	11.5%	87	- 9	- 10.3%

MSF – Crimes per 1000 Residents 01 Feb 2005 – 30 Apr 2005



MSF – Sanction detections (annual): 01 May 2004 – 30 Apr 2005



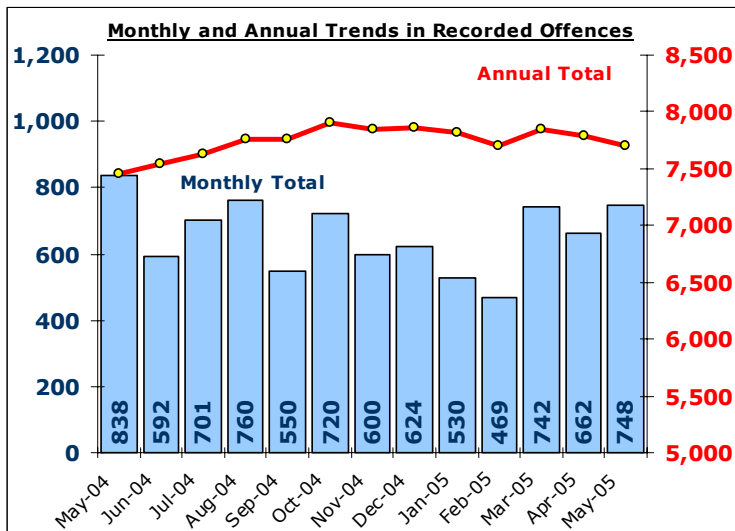
Excel MSF - Sanction Detections per Crime-Dyfed Powys-Vehicles Crimes (excluding Vehicle Interference) 01 May 2004 - 30 Apr 2005

Total Criminal Damage

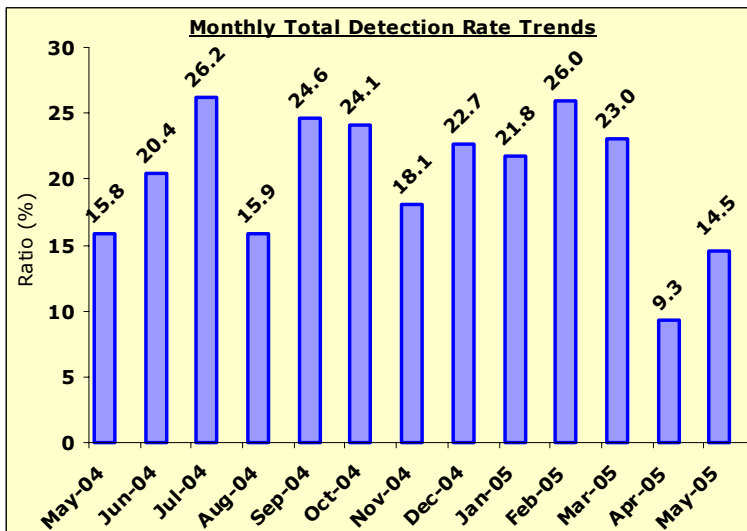
DYFED-POWYS POLICE

TARGET 2005/06 : NO TARGET

Recorded Crime Levels – May 2005

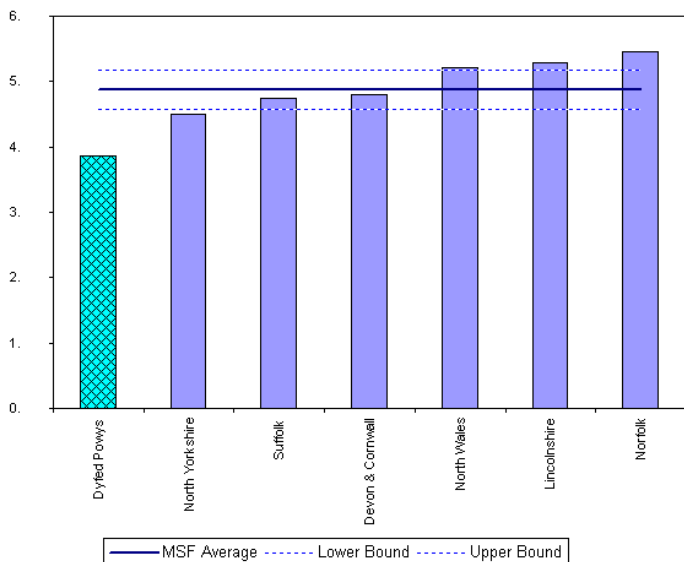


Total Monthly Detection Rates – May 2005

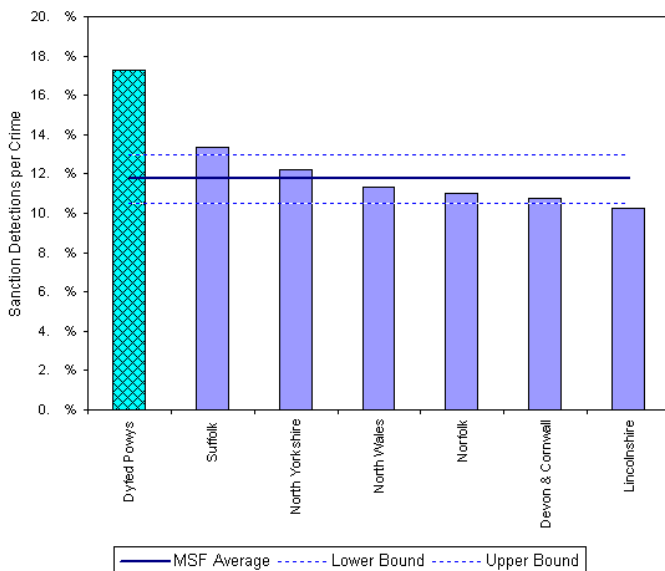


Total Criminal Damage: May 2005 YTD	May 2005 YTD			Detection Rates		Annual Trends - SPLY		
	Crimes	Sanction Dets	Total Dets	Sanction %	Total %	Crimes SPLY	Change	% Change
FORCE	1,410	270	342	19.1%	24.3%	1,563	- 153	- 9.8%
CARMS	483	68	91	14.1%	18.8%	644	- 161	- 25.0%
CERED	152	29	34	19.1%	22.4%	176	- 24	- 13.6%
PEMBS	466	119	131	25.5%	28.1%	392	+ 74	+ 18.9%
POWYS	309	54	86	17.5%	27.8%	351	- 42	- 12.0%

MSF – Crimes per 1000 Residents 01 Feb 2005 – 30 Apr 2005



MSF – Sanction detections (annual): 01 May 2004 – 30 Apr 2005



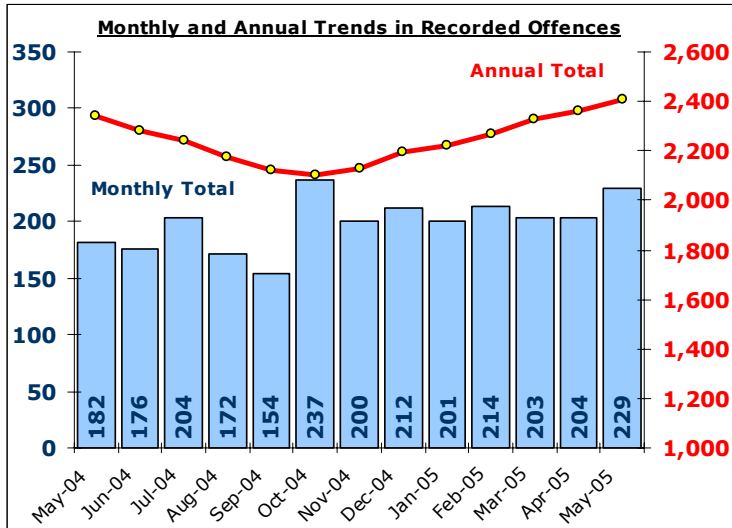
BarChart MSF - Sanction Detections per Crime-Dyfed Powys-Criminal Damage (exc:53)-01May 2004 - 30 Apr 2005

Total Drug Offences

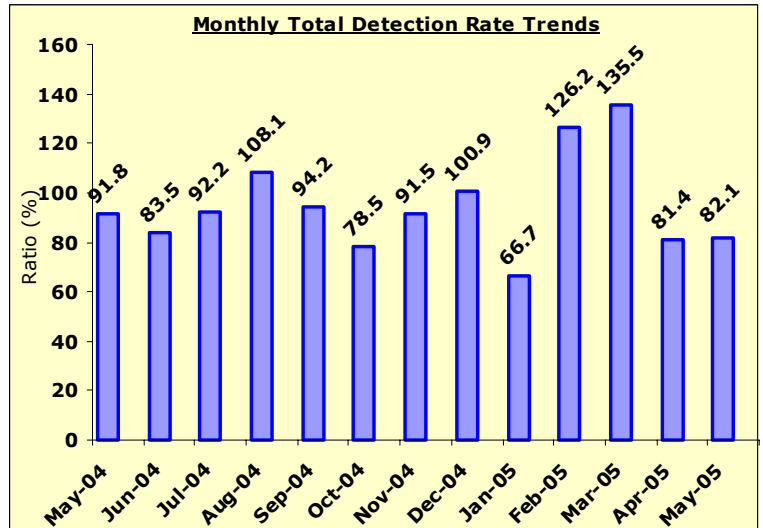
DYFED-POWYS POLICE

TARGET 2005/06 : NO TARGET

Recorded Crime Levels – May 2005

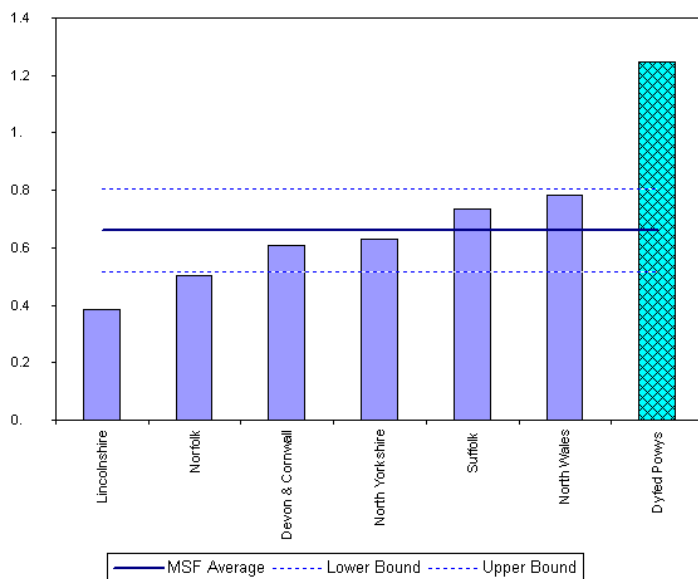


Total Monthly Detection Rates – May 2005

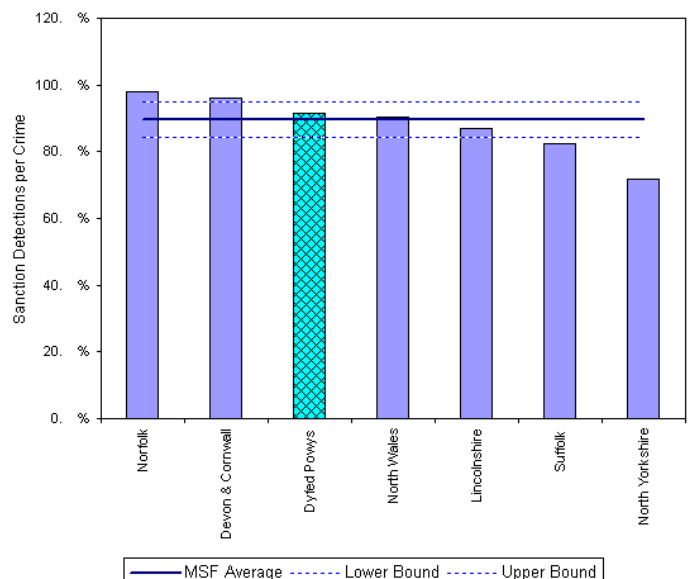


Total Drug Offences: May 2005 YTD	May 2005 YTD			Detection Rates		Annual Trends - SPLY		
	Crimes	Sanction Dets	Total Dets	Sanction %	Total %	Crimes SPLY	Change	% Change
FORCE	433	319	354	73.7%	81.8%	354	+ 79	+ 22.3%
CARMS	184	128	151	69.6%	82.1%	125	+ 59	+ 47.2%
CERED	88	74	77	84.1%	87.5%	80	+ 8	+ 10.0%
PEMBS	97	76	83	78.4%	85.6%	95	+ 2	+ 2.1%
POWYS	64	41	43	64.1%	67.2%	54	+ 10	+ 18.5%

MSF – Crimes per 1000 Residents 01 Feb 2005 – 30 Apr 2005



MSF – Sanction detections (annual): 01 May 2004 – 30 Apr 2005



Section Level Sanction Detection Summary

DYFED-POWYS POLICE

TARGET 2005/06 : 31% SANCTION DETECTION RATE

Sanction Detections Performance: Total Recorded Crimes

Sanction Detection Rate	Recorded	Detected	Det Ratio	Recorded	Diff	% Change
THE FORCE	5,607	1,783	31.8%	5,980	- 373	- 6.2%
Carmarthenshire	2,092	632	30.2%	2,549	- 457	- 17.9%
Ammanford (AA)	268	114	42.5%	286	- 18	- 6.3%
Carmarthen (AC)	497	178	35.8%	591	- 94	- 15.9%
Llanelli (AL)	1,065	275	25.8%	1,393	- 328	- 23.5%
Towy Gwendraeth (AT)	262	65	24.8%	279	- 17	- 6.1%
Ceredigion	738	271	36.7%	769	- 31	- 4.0%
Aberystwyth (BA)	416	174	41.8%	414	+ 2	+ 0.5%
Aberaeron (BB)	67	25	37.3%	95	- 28	- 29.5%
Cardigan (BC)	177	42	23.7%	185	- 8	- 4.3%
Lampeter (BL)	78	30	38.5%	75	+ 3	+ 4.0%
Pembrokeshire	1,464	502	34.3%	1,410	+ 54	+ 3.8%
Fishguard (CF)	139	34	24.5%	163	- 24	- 14.7%
Haverfordwest (CH)	342	107	31.3%	402	- 60	- 14.9%
Milford Haven (CM)	261	98	37.5%	313	- 52	- 16.6%
Pembroke Dock (CP)	438	182	41.6%	255	+ 183	+ 71.8%
Tenby (CT)	284	81	28.5%	277	+ 7	+ 2.5%
Powys	1,313	378	28.8%	1,252	+ 61	+ 4.9%
Brecon (DB)	340	83	24.4%	248	+ 92	+ 37.1%
Llandrindod Wells (DL)	221	64	29.0%	276	- 55	- 19.9%
Newtown (DN)	393	108	27.5%	305	+ 88	+ 28.9%
Welshpool (DW)	248	81	32.7%	269	- 21	- 7.8%
Ystradgynlais (DY)	111	42	37.8%	154	- 43	- 27.9%

Sanction Detection Performance: Domestic Burglary, Violent Crime & Vehicle Crime

Sanction Detections	Total Domestic Burglary			Total Violent Crime			Total Vehicle Crime		
	Recorded	Detected	Det Ratio	Recorded	Detected	Det Ratio	Recorded	Detected	Det Ratio
THE FORCE	129	31	24.0%	1,503	608	40.5%	354	33	9.3%
Carmarthenshire	51	7	13.7%	534	213	39.9%	145	12	8.3%
Ammanford (AA)	4	1	25.0%	54	25	46.3%	17	2	11.8%
Carmarthen (AC)	10	4	40.0%	143	62	43.4%	26	1	3.8%
Llanelli (AL)	29	2	6.9%	265	99	37.4%	84	7	8.3%
Towy Gwendraeth (AT)	8	0	0.0%	72	27	37.5%	18	2	11.1%
Ceredigion	10	3	30.0%	195	82	42.1%	42	6	14.3%
Aberystwyth (BA)	6	3	50.0%	110	59	53.6%	17	2	11.8%
Aberaeron (BB)	0	0	No Calc	12	9	75.0%	6	0	0.0%
Cardigan (BC)	2	0	0.0%	53	9	17.0%	10	1	10.0%
Lampeter (BL)	2	0	0.0%	20	5	25.0%	9	3	33.3%
Pembrokeshire	31	14	45.2%	358	157	43.9%	89	10	11.2%
Fishguard (CF)	0	0	No Calc	30	9	30.0%	13	1	7.7%
Haverfordwest (CH)	14	5	35.7%	97	34	35.1%	11	1	9.1%
Milford Haven (CM)	3	2	66.7%	89	38	42.7%	12	4	33.3%
Pembroke Dock (CP)	10	4	40.0%	85	40	47.1%	27	2	7.4%
Tenby (CT)	4	3	75.0%	57	36	63.2%	26	2	7.7%
Powys	37	7	18.9%	416	156	37.5%	78	5	6.4%
Brecon (DB)	5	0	0.0%	105	38	36.2%	25	1	4.0%
Llandrindod Wells (DL)	9	3	33.3%	63	27	42.9%	12	0	0.0%
Newtown (DN)	16	2	12.5%	130	42	32.3%	23	2	8.7%
Welshpool (DW)	6	2	33.3%	84	35	41.7%	11	1	9.1%
Ystradgynlais (DY)	1	0	0.0%	34	14	41.2%	7	1	14.3%

Target Contribution Summary - Carmarthenshire

DYFED-POWYS POLICE

GREEN/RED indicates current performance **consistent** or **not consistent** with force target reduction & detection rate

CARMARTHENSHIRE		April-May YTD		Last Year		Indicator
CRIME	Performance	Indicator	Performance	Indicator	Change & Detection	
Total Crime Recorded (per 1,000 population)	2092	12.1	2549	14.7	-17.9%	
Detection (% rate)	774	37.0%	854	33.5%	37.0%	
Burglary Dwelling (per 1,000 households)	51	0.7	86	1.2	-40.7%	
Detection (% rate)	7	13.7%	13	15.1%	13.7%	
Total Violent Crime (per 1,000 population)	534	3.1	695	4.0	-23.2%	
Detection (% rate)	294	55.1%	355	51.1%	55.1%	
Autocrime per (1,000 population)	145	0.8	213	1.2	-31.9%	
Detection (% rate)	15	10.3%	28	13.1%	10.3%	
Ammanford		April-May YTD		Last Year		Indicator
CRIME	Performance	Indicator	Performance	Indicator	Change & Detection	
Total Crime Recorded (per 1,000 population)	268	8.2	286	8.8	-6.3%	
Detection (% rate)	128	47.8%	146	51.0%	47.8%	
Burglary Dwelling (per 1,000 households)	4	0.3	7	0.5	-42.9%	
Detection (% rate)	1	25.0%	1	14.3%	25.0%	
Total Violent Crime (per 1,000 population)	54	1.7	68	2.1	-20.6%	
Detection (% rate)	33	61.1%	57	83.8%	61.1%	
Autocrime per (1,000 population)	17	0.5	12	0.4	41.7%	
Detection (% rate)	2	11.8%	2	16.7%	11.8%	
Carmarthen		April-May YTD		Last Year		Indicator
CRIME	Performance	Indicator	Performance	Indicator	Change & Detection	
Total Crime Recorded (per 1,000 population)	497	10.1	591	12.0	-15.9%	
Detection (% rate)	213	42.9%	242	40.9%	42.9%	
Burglary Dwelling (per 1,000 households)	10	0.5	13	0.6	-23.1%	
Detection (% rate)	4	40.0%	2	15.4%	40.0%	
Total Violent Crime (per 1,000 population)	143	2.9	173	3.5	-17.3%	
Detection (% rate)	86	60.1%	104	60.1%	60.1%	
Autocrime per (1,000 population)	26	0.5	38	0.8	-31.6%	
Detection (% rate)	1	3.8%	2	5.3%	3.8%	
Llanelli		April-May YTD		Last Year		Indicator
CRIME	Performance	Indicator	Performance	Indicator	Change & Detection	
Total Crime Recorded (per 1,000 population)	1065	17.6	1393	23.0	-23.5%	
Detection (% rate)	352	33.1%	354	25.4%	33.1%	
Burglary Dwelling (per 1,000 households)	29	1.1	57	2.2	-49.1%	
Detection (% rate)	2	6.9%	8	14.0%	6.9%	
Total Violent Crime (per 1,000 population)	265	4.4	384	6.4	-31.0%	
Detection (% rate)	142	53.6%	150	39.1%	53.6%	
Towy/Gwenraeth		April-May YTD		Last Year		Indicator
CRIME	Performance	Indicator	Performance	Indicator	Change & Detection	
Total Crime Recorded (per 1,000 population)	262	8.7	279	9.2	-6.1%	
Detection (% rate)	81	30.9%	112	40.1%	30.9%	
Burglary Dwelling (per 1,000 households)	8	0.6	9	0.7	-11.1%	
Detection (% rate)	0	0.0%	2	22.2%	0.0%	
Total Violent Crime (per 1,000 population)	72	2.4	70	2.3	2.9%	
Detection (% rate)	33	45.8%	44	62.9%	45.8%	
Autocrime per (1,000 population)	18	0.6	29	1.0	-37.9%	
Detection (% rate)	3	16.7%	2	6.9%	16.7%	

Target Contribution Summary - Ceredigion

DYFED-POWYS POLICE

GREEN/RED indicates current performance **consistent** or **not consistent** with force target reduction & detection rate

CEREDIGION		April-May YTD		Last Year		Indicator
CRIME	Performance	Indicator	Performance	Indicator	Change & Detection	
Total Crime Recorded (per 1,000 population)	738	9.8	769	10.3	-4.0%	
Detection (% rate)	313	42.4%	333	43.3%	42.4%	
Burglary Dwelling (per 1,000 households)	10	0.3	16	0.5	-37.5%	
Detection (% rate)	3	30.0%	7	43.8%	30.0%	
Total Violent Crime (per 1,000 population)	195	2.6	225	3.0	-13.3%	
Detection (% rate)	106	54.4%	103	45.8%	54.4%	
Autocrime per (1,000 population)	42	0.6	31	0.4	35.5%	
Detection (% rate)	7	16.7%	6	19.4%	16.7%	
Ceredigion North						
CRIME	Performance	Indicator	Performance	Indicator	Change & Detection	
Total Crime Recorded (per 1,000 population)	416	13.1	414	13.0	0.5%	
Detection (% rate)	191	45.9%	203	49.0%	45.9%	
Burglary Dwelling (per 1,000 households)	6	0.5	6	0.5	0.0%	
Detection (% rate)	3	50.0%	3	50.0%	50.0%	
Total Violent Crime (per 1,000 population)	110	3.5	121	3.8	-9.1%	
Detection (% rate)	69	62.7%	60	49.6%	62.7%	
Autocrime per (1,000 population)	17	0.5	15	0.5	13.3%	
Detection (% rate)	2	11.8%	1	6.7%	11.8%	
Ceredigion South						
CRIME	Performance	Indicator	Performance	Indicator	Change & Detection	
Total Crime Recorded (per 1,000 population)	322	7.5	355	8.3	-9.3%	
Detection (% rate)	122	37.9%	125	35.2%	37.9%	
Burglary Dwelling (per 1,000 households)	4	0.2	10	0.5	-60.0%	
Detection (% rate)	0	0.0%	4	40.0%	0.0%	
Total Violent Crime (per 1,000 population)	85	2.0	104	2.4	-18.3%	
Detection (% rate)	37	43.5%	43	41.3%	43.5%	
Autocrime per (1,000 population)	25	0.6	16	0.4	56.3%	
Detection (% rate)	5	20.0%	5	31.3%	20.0%	

Ceredigion South is an area used for comparison purposes only. It incorporates the three section areas of Lampeter/Aberaeron and Cardigan. Details on these three discrete areas is also included here for information.

Aberaeron		April-May YTD		Last Year		Indicator
CRIME	Performance	Indicator	Performance	Indicator	Change & Detection	
Total Crime Recorded (per 1,000 population)	67	5.3	95	7.5	-29.5%	
Detection (% rate)	28	41.8%	23	24.2%	41.8%	
Burglary Dwelling (per 1,000 households)	0	0.0	5	0.9	-100.0%	
Detection (% rate)	0	#DIV/0!	3	60.0%	#DIV/0!	
Total Violent Crime (per 1,000 population)	12	0.9	25	2.0	-52.0%	
Detection (% rate)	9	75.0%	8	32.0%	75.0%	
Autocrime per (1,000 population)	6	0.5	4	0.3	50.0%	
Detection (% rate)	1	16.7%	1	25.0%	16.7%	
Cardigan						
CRIME	Performance	Indicator	Performance	Indicator	Change & Detection	
Total Crime Recorded (per 1,000 population)	177	9.4	185	9.8	-4.3%	
Detection (% rate)	58	32.8%	73	39.5%	32.8%	
Burglary Dwelling (per 1,000 households)	2	0.2	3	0.4	-33.3%	
Detection (% rate)	0	0.0%	1	33.3%	0.0%	
Total Violent Crime (per 1,000 population)	53	2.8	61	3.2	-13.1%	
Detection (% rate)	19	35.8%	26	42.6%	35.8%	
Autocrime per (1,000 population)	10	0.5	9	0.5	11.1%	
Detection (% rate)	1	10.0%	4	44.4%	10.0%	
Lampeter						
CRIME	Performance	Indicator	Performance	Indicator	Change & Detection	
Total Crime Recorded (per 1,000 population)	78	6.7	75	6.5	4.0%	
Detection (% rate)	36	46.2%	29	38.7%	46.2%	
Burglary Dwelling (per 1,000 households)	2	0.4	2	0.4	0.0%	
Detection (% rate)	0	0.0%	0	0.0%	0.0%	
Total Violent Crime (per 1,000 population)	20	1.7	18	1.6	11.1%	
Detection (% rate)	9	45.0%	9	50.0%	45.0%	
Autocrime per (1,000 population)	9	0.8	3	0.3	200.0%	
Detection (% rate)	3	33.3%	0	0.0%	33.3%	

Target Contribution Summary - Pembrokeshire

DYFED-POWYS POLICE

GREEN/RED indicates current performance **consistent** or **not consistent** with force target reduction & total detection rate

PEMBROKESHIRE		April-May YTD		Last Year		Indicator
CRIME	Performance	Indicator	Performance	Indicator	Change & Detection	
Total Crime Recorded (per 1,000 population)	1464	12.8	1410	12.4	3.8%	
Detection (% rate)	584	39.9%	586	41.6%	39.9%	
Burglary Dwelling (per 1,000 households)	30	0.6	38	0.8	-21.1%	
Detection (% rate)	14	46.7%	10	26.3%	46.7%	
Total Violent Crime (per 1,000 population)	358	3.1	428	3.8	-16.4%	
Detection (% rate)	207	57.8%	256	59.8%	57.8%	
Autocrime per (1,000 population)	89	0.8	98	0.9	-9.2%	
Detection (% rate)	12	13.5%	23	23.5%	13.5%	
Fishguard		April-May YTD		Last Year		Indicator
CRIME	Performance	Indicator	Performance	Indicator	Change & Detection	
Total Crime Recorded (per 1,000 population)	139	5.2	163	6.2	-14.7%	
Detection (% rate)	49	35.3%	81	49.7%	35.3%	
Burglary Dwelling (per 1,000 households)	0	0.0	2	0.2	-100.0%	
Detection (% rate)	1	#DIV/0!	1	50.0%	#DIV/0!	
Total Violent Crime (per 1,000 population)	30	1.1	42	1.6	-28.6%	
Detection (% rate)	19	63.3%	30	71.4%	63.3%	
Autocrime per (1,000 population)	13	0.5	10	0.4	30.0%	
Detection (% rate)	2	15.4%	4	40.0%	15.4%	
Haverfordwest		April-May YTD		Last Year		Indicator
CRIME	Performance	Indicator	Performance	Indicator	Change & Detection	
Total Crime Recorded (per 1,000 population)	342	17.1	402	20.1	-14.9%	
Detection (% rate)	123	36.0%	162	40.3%	36.0%	
Burglary Dwelling (per 1,000 households)	14	1.7	14	1.7	0.0%	
Detection (% rate)	5	35.7%	4	28.6%	35.7%	
Total Violent Crime (per 1,000 population)	97	4.9	145	7.3	-33.1%	
Detection (% rate)	44	45.4%	82	56.6%	45.4%	
Autocrime per (1,000 population)	11	0.6	34	1.7	-67.6%	
Detection (% rate)	1	9.1%	9	26.5%	9.1%	
Milford Haven		April-May YTD		Last Year		Indicator
CRIME	Performance	Indicator	Performance	Indicator	Change & Detection	
Total Crime Recorded (per 1,000 population)	261	10.7	313	12.8	-16.6%	
Detection (% rate)	111	42.5%	116	37.1%	42.5%	
Burglary Dwelling (per 1,000 households)	3	0.3	6	0.6	-50.0%	
Detection (% rate)	2	66.7%	1	16.7%	66.7%	
Total Violent Crime (per 1,000 population)	89	3.6	71	2.9	25.4%	
Detection (% rate)	48	53.9%	48	67.6%	53.9%	
Autocrime per (1,000 population)	12	0.5	16	0.7	-25.0%	
Detection (% rate)	5	41.7%	4	25.0%	41.7%	
Pembroke Dock		April-May YTD		Last Year		Indicator
CRIME	Performance	Indicator	Performance	Indicator	Change & Detection	
Total Crime Recorded (per 1,000 population)	438	22.9	255	13.3	71.8%	
Detection (% rate)	208	47.5%	99	38.8%	47.5%	
Burglary Dwelling (per 1,000 households)	9	1.1	10	1.2	-10.0%	
Detection (% rate)	3	33.3%	2	20.0%	33.3%	
Total Violent Crime (per 1,000 population)	85	4.4	81	4.2	4.9%	
Detection (% rate)	53	62.4%	39	48.1%	62.4%	
Autocrime per (1,000 population)	27	1.4	19	1.0	42.1%	
Detection (% rate)	2	7.4%	4	21.1%	7.4%	
Tenby		April-May YTD		Last Year		Indicator
CRIME	Performance	Indicator	Performance	Indicator	Change & Detection	
Total Crime Recorded (per 1,000 population)	284	11.8	277	11.5	2.5%	
Detection (% rate)	93	32.7%	114	41.2%	32.7%	
Burglary Dwelling (per 1,000 households)	4	0.4	6	0.6	-33.3%	
Detection (% rate)	3	75.0%	2	33.3%	75.0%	
Total Violent Crime (per 1,000 population)	57	2.4	89	3.7	-36.0%	
Detection (% rate)	43	75.4%	57	64.0%	75.4%	
Autocrime per (1,000 population)	26	1.1	19	0.8	36.8%	
Detection (% rate)	2	7.7%	2	10.5%	7.7%	

Target Contribution Summary - Powys

DYFED-POWYS POLICE

GREEN/RED indicates current performance **consistent** or **not consistent** with force target reduction & detection rate

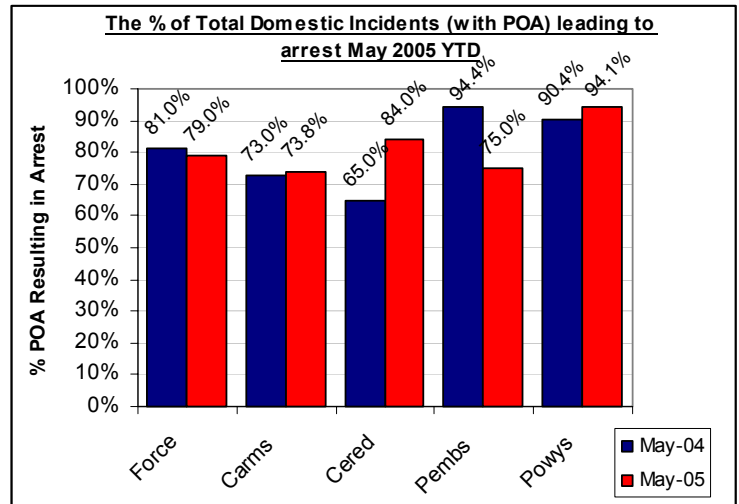
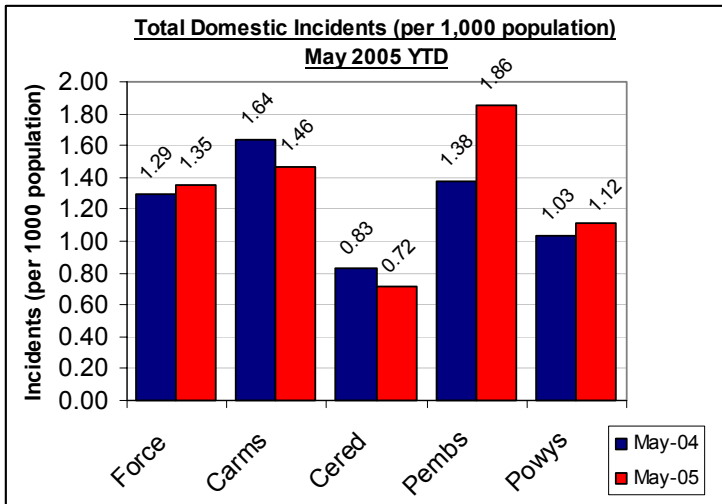
POWYS		April-May YTD		Last Year		Indicator
CRIME	Performance	Indicator	Performance	Indicator	Change & Detection	
Total Crime Recorded (per 1,000 population)	1313	10.4	1252	9.9	4.9%	
Detection (% rate)	477	36.3%	490	39.1%	36.3%	
Burglary Dwelling (per 1,000 households)	37	0.7	42	0.8	-11.9%	
Detection (% rate)	7	18.9%	14	33.3%	18.9%	
Total Violent Crime (per 1,000 population)	416	3.3	325	2.6	28.0%	
Detection (% rate)	210	50.5%	194	59.7%	50.5%	
Autocrime per (1,000 population)	78	0.6	87	0.7	-10.3%	
Detection (% rate)	9	11.5%	8	9.2%	11.5%	
Brecon		April-May YTD		Last Year		Indicator
CRIME	Performance	Indicator	Performance	Indicator	Change & Detection	
Total Crime Recorded (per 1,000 population)	340	13.3	248	9.7	37.1%	
Detection (% rate)	99	29.1%	106	42.7%	29.1%	
Burglary Dwelling (per 1,000 households)	5	0.5	8	0.7	-37.5%	
Detection (% rate)	0	0.0%	4	50.0%	0.0%	
Total Violent Crime (per 1,000 population)	105	4.1	70	2.7	50.0%	
Detection (% rate)	48	45.7%	50	71.4%	45.7%	
Autocrime per (1,000 population)	25	1.0	18	0.7	38.9%	
Detection (% rate)	1	4.0%	2	11.1%	4.0%	
Llandrindod Wells		April-May YTD		Last Year		Indicator
CRIME	Performance	Indicator	Performance	Indicator	Change & Detection	
Total Crime Recorded (per 1,000 population)	221	7.8	276	9.8	-19.9%	
Detection (% rate)	88	39.8%	115	41.7%	39.8%	
Burglary Dwelling (per 1,000 households)	9	0.7	11	0.9	-18.2%	
Detection (% rate)	3	33.3%	3	27.3%	33.3%	
Total Violent Crime (per 1,000 population)	63	2.2	88	3.1	-28.4%	
Detection (% rate)	38	60.3%	46	52.3%	60.3%	
Autocrime per (1,000 population)	12	0.4	16	0.6	-25.0%	
Detection (% rate)	2	16.7%	4	25.0%	16.7%	
Newtown		April-May YTD		Last Year		Indicator
CRIME	Performance	Indicator	Performance	Indicator	Change & Detection	
Total Crime Recorded (per 1,000 population)	393	11.2	305	8.7	28.9%	
Detection (% rate)	137	34.9%	109	35.7%	34.9%	
Burglary Dwelling (per 1,000 households)	16	1.1	17	1.1	-5.9%	
Detection (% rate)	2	12.5%	3	17.6%	12.5%	
Total Violent Crime (per 1,000 population)	130	3.7	77	2.2	68.8%	
Detection (% rate)	60	46.2%	46	59.7%	46.2%	
Autocrime per (1,000 population)	23	0.7	16	0.5	43.8%	
Detection (% rate)	2	8.7%	1	6.3%	8.7%	
Welshpool		April-May YTD		Last Year		Indicator
CRIME	Performance	Indicator	Performance	Indicator	Change & Detection	
Total Crime Recorded (per 1,000 population)	248	9.7	269	10.5	-7.8%	
Detection (% rate)	95	38.3%	100	37.2%	38.3%	
Burglary Dwelling (per 1,000 households)	6	0.6	4	0.4	50.0%	
Detection (% rate)	2	33.3%	1	25.0%	33.3%	
Total Violent Crime (per 1,000 population)	84	3.3	59	2.3	42.4%	
Detection (% rate)	43	51.2%	32	54.2%	51.2%	
Autocrime per (1,000 population)	11	0.4	17	0.7	-35.3%	
Detection (% rate)	3	27.3%	1	5.9%	27.3%	
Ystradgynlais		April-May YTD		Last Year		Indicator
CRIME	Performance	Indicator	Performance	Indicator	Change & Detection	
Total Crime Recorded (per 1,000 population)	111	9.3	154	13.0	-27.9%	
Detection (% rate)	58	52.3%	57	37.0%	52.3%	
Burglary Dwelling (per 1,000 households)	1	0.2	2	0.4	-50.0%	
Detection (% rate)	0	0.0%	3	150.0%	0.0%	
Total Violent Crime (per 1,000 population)	34	2.9	31	2.6	9.7%	
Detection (% rate)	21	61.8%	20	64.5%	61.8%	
Autocrime per (1,000 population)	7	0.6	20	1.7	-65.0%	
Detection (% rate)	1	14.3%	0	0.0%	14.3%	

Domestic Incidents

DYFED POWYS POLICE

SPI 9A TARGET - 80% OF INCIDENTS (WITH A POWER OF ARREST) LEADING TO ARREST
LOCAL TARGET – 30% OF TOTAL INCIDENTS INVOLVING REPEAT VICTIMS

Please note figures provided here are provisional only. For detailed information please contact your local Public Protection Unit (PPU).



Section & Divisional Summary – May 2005 YTD

Section	Incidents		Arrests		Partner-Partner		Repeat Victims		Apr-May 2004 (SPLY)	
	Total Incidents	Power Of Arrest	Arrests where POA	% POA	Partner-Partner	% of these Partner-Partner	Total Repeat Victim Incidents	% Repeats	Total Incidents	Annual % Change
Ammanford (AA)	23	7	7	100.0%	6	85.7%	7	30.4%	61	-62.3%
Carmarthen (AC)	48	25	17	68.0%	13	76.5%	16	33.3%	51	-5.9%
Llanelli (AL)	147	61	46	75.4%	39	84.8%	48	32.7%	130	13.1%
Towy Gwendraeth (AT)	35	14	9	64.3%	6	66.7%	10	28.6%	41	-14.6%
Carmarthenshire	253	107	79	73.8%	64	81.0%	81	32.0%	283	-10.6%
Aberystwyth (BA)	32	16	14	87.5%	13	92.9%	7	21.9%	31	3.2%
Aberaeron (BB)	4	3	3	100.0%	3	100.0%	0	0.0%	9	-55.6%
Cardigan (BC)	10	4	3	75.0%	3	100.0%	5	50.0%	20	-50.0%
Lampeter (BL)	8	2	1	50.0%	1	100.0%	1	12.5%	2	300.0%
Ceredigion	54	25	21	84.0%	20	95.2%	13	24.1%	62	-12.9%
Fishguard (CF)	30	12	10	83.3%	8	80.0%	11	36.7%	15	100.0%
Haverfordwest (CH)	43	17	13	76.5%	11	84.6%	14	32.6%	46	-6.5%
Milford Haven (CM)	54	21	14	66.7%	13	92.9%	20	37.0%	41	31.7%
Pembroke Dock (CP)	59	23	18	78.3%	17	94.4%	25	42.4%	42	40.5%
Tenby (CT)	26	11	8	72.7%	6	75.0%	10	38.5%	13	100.0%
Pembrokeshire	212	84	63	75.0%	55	87.3%	80	37.7%	157	35.0%
Brecon (DB)	26	11	11	100.0%	10	90.9%	9	34.6%	24	8.3%
Llandrindod Wells (DL)	19	4	4	100.0%	3	75.0%	5	26.3%	31	-38.7%
Newtown (DN)	44	18	15	83.3%	13	86.7%	13	29.5%	35	25.7%
Welshpool (DW)	27	9	9	100.0%	9	100.0%	12	44.4%	26	3.8%
Ystradgynlais (DY)	24	9	9	100.0%	9	100.0%	11	45.8%	14	71.4%
Powys	140	51	48	94.1%	44	91.7%	50	35.7%	130	7.7%
Force	659	267	211	79.0%	183	86.7%	224	34.0%	632	4.3%

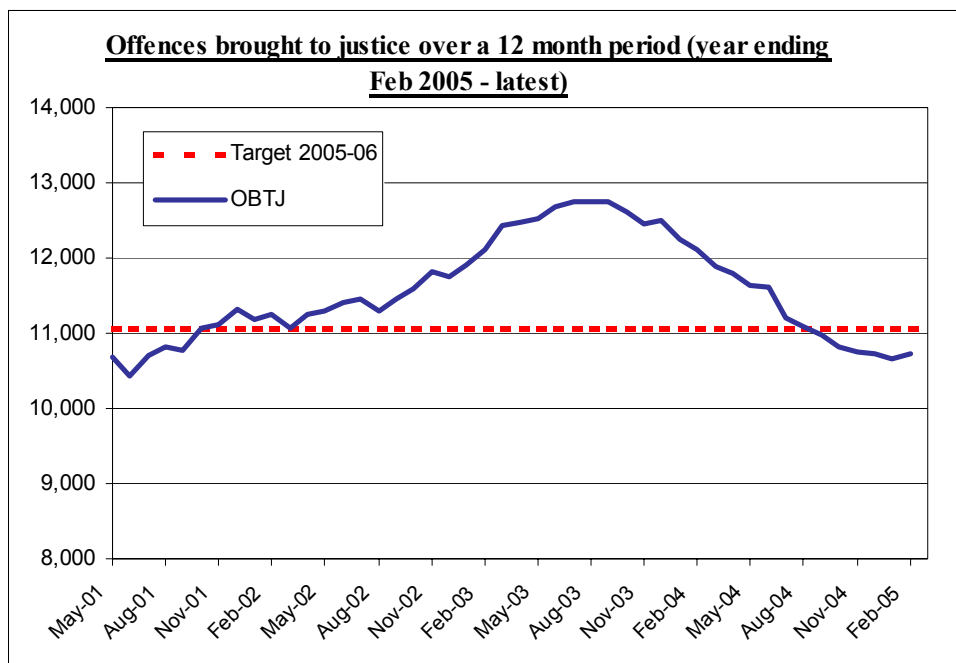
Source: LCS Recorded Domestic Incident Details (extracted 7/6/05 & 9/6/04)

Narrowing the Justice Gap -

OFFENCES BROUGHT TO JUSTICE

TARGET 2005/06 : 11,068 total OBTJ (Offences Brought to Justice)

Total Offences Brought to Justice (OBTJ) - Force



Offences brought to justice – 12 monthly data	TIC	Penalty Notices for Disorder	Formal Warnings	Cautions	Convictions	Offences brought to justice
Baseline: Apr 01 – Mar 02	420	-	-	3,698	6,900	11,068
Latest: Mar 04 – Feb 05	394	293	757	3,462	5,824	10,730
Change	-6.2%	-	-	-6.4%	-15.6%	-3.1%
2005/06 Target (0%- 11,068 OBTJ)			YES	NO	NO	NO

Divisional Contribution Toward OBTJ Volumes - Approximate

Please note this data is provided as a guide only - it is based on the assumption that the distribution of sanction detections throughout the force will ultimately be mirrored in the distribution of OBTJ recorded for that month (or latest available). It is provided here for information only

Approx OBTJ	Apr-05* (estimated)	Target**	Difference from Target
Carmarthenshire	358	331	8.1%
Ceredigion	138	145	-4.3%
Pembrokeshire	253	245	3.2%
Powys	190	201	-5.7%
Force	939	922	1.8%

* - Estimated OBTJ Based on latest monthly force level data (Feb 2005) and distribution of sanction detections in April 2005.

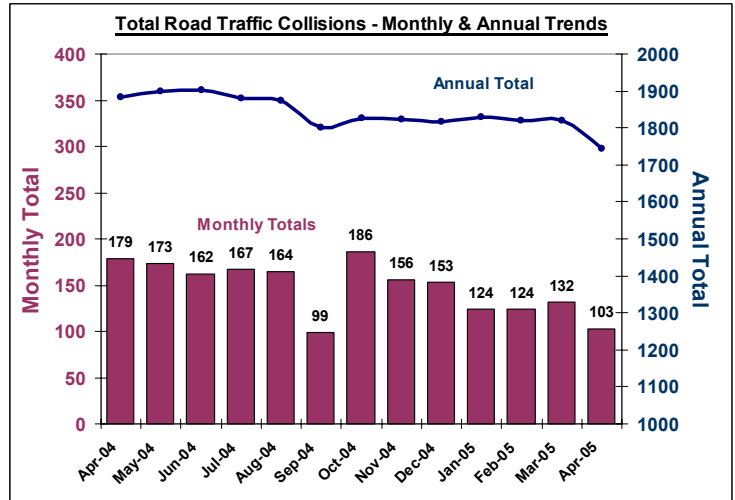
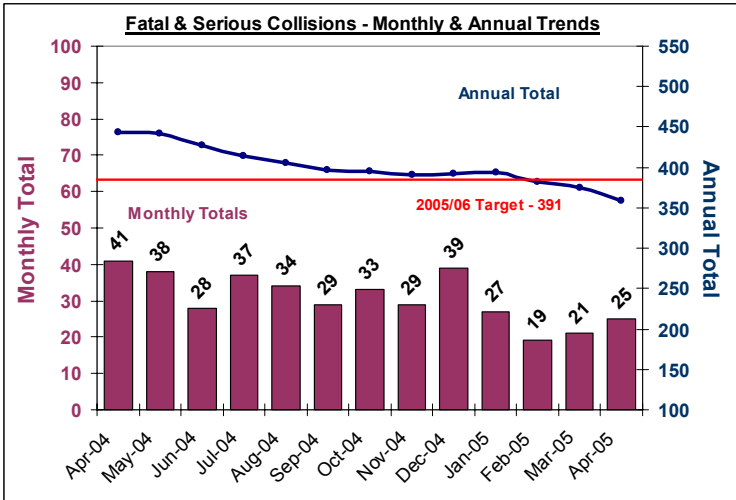
** - Target profile required to attain the end of year target of 11,068 OBTJ. Approximate divisional distribution is based on 2004/05 contribution toward total force sanction detections).

Road Traffic Collisions

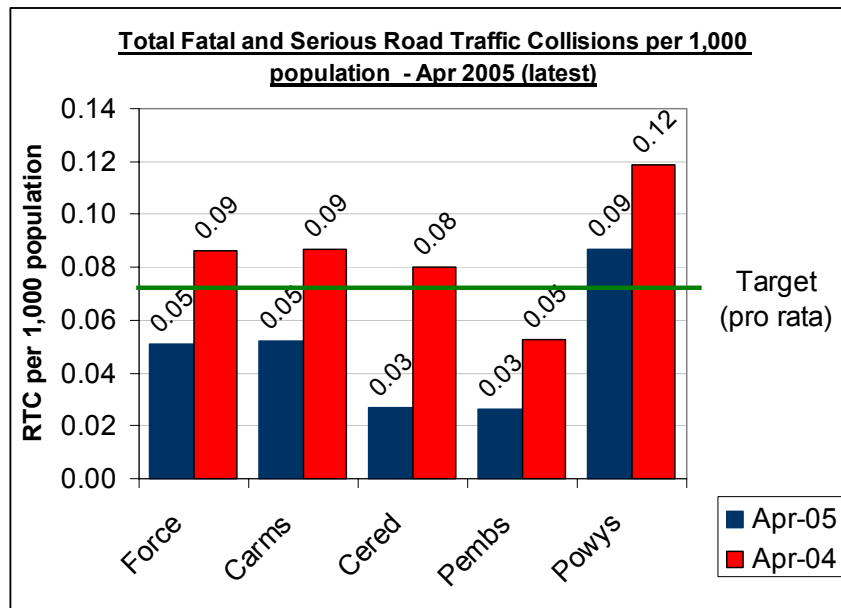
April Monthly Data Latest available

TARGET 2005/06 : 391 FATAL AND SERIOUS COLLISIONS (0.8 PER 1,000 POPULATION)

Road Traffic Collisions – Monthly & Annual Trends (latest data)



Divisional Contribution Toward OBTJ Volumes - Approximate



Performance YTD (Apr 2005 YTD - latest)	FORCE	Carmns	Cered	Pembs	Powys
Fatal Road Collisions YTD	2	2	0	0	0
Serious & Fatal Road Collisions YTD	25	9	2	3	11
Indicator - Per 1,000 population	0.09	0.09	0.08	0.05	0.12
On-Target (0.71 pro-rata)	NO	YES	NO	YES	NO
Fatal (SPLY)	7	3	1	1	2
Serious & Fatal (SPLY)	42	15	6	6	15

PPAF Statutory Performance Indicator Summary

Reported Quarterly

* - HOME OFFICE POLICE PERFORMANCE ASSESSMENT FRAMEWORK MEASURES

This Data is Updated Quarterly – Latest: 2004/05 End of Year Data

SPI Number	Indicator Description	2004/05 Performance	2004/05 End of Year Target	2005-06 DPP Target
1a	Satisfaction of victims of domestic burglary, violent crime, vehicle crime and road traffic collisions with respect to - a) making contact with the Police	91.9%	NEW	92%
1b	b) action taken by the Police	83.6%	NEW	83%
1c	c) Being kept informed of progress	70.1%	NEW	70%
1d	d) Their treatment by staff	91.8%	NEW	92%
1e	e) the overall service provided	84.9%	NEW	85%
2a	Using the BCS, the % of people who think their local police do a good job	NEW	NEW	NEW
3a	Satisfaction of victims of racist incidents with respect to the overall service provided	79.2%	NEW	85%
3b	From SPI 1(e), comparison of satisfaction for white users and users from visible minority ethnic groups with respect to the overall service provided.	White - 84.5% Ethnic - 71.7%	NEW	White - 85% Ethnic - 72%
3c(i)	(i) % of PACE stop/searches which lead to arrest by ethnicity	White - 17.0% Ethnic - 27.2%	White - 20% Ethnic - 20%	White - 20% Ethnic - 20%
3c(ii)	(ii) % of other (non-PAEC) stop/searches which lead to arrest by ethnicity	NEW	NEW	NEW
3d	Comparison of percentage detected of violence against the person offences by ethnicity of the victim (sanction detections)	White - 31.2% Ethnic - 31.5%	NEW	White - 31% Ethnic - 31%
3e	Proportion of police recruits (ethnic) compared to the proportion of people from minority ethnic groups in the economically active population.	0% (No ethnic recruits)	NEW	NEW
3f	Ratio of officers from minority ethnic groups residing to all officer resignations	NEW	NEW	NEW
3g	% of female police officers compared to overall Force strength.	19.7%	NEW	19%
4a	Using the British Crime Survey (a) the risk of personal crime; and	8%	4%	8%
4b	(b) the risk of household crime.	11%	10%	11%
5a	(a) Domestic Burglaries per 1,000 households.	5.06 (1042 crimes)	4.7 (960 crimes)	5.06 (1042 crimes)
5b	(b) Violent crime per 1,000 population.	18.14 (8859 crimes)	16.7 (8145 crimes)	17.60 (8593 crimes)
5c	(c) Robberies per 1,000 population.	0.08 (41 crimes)	0.08 (40 crimes)	0.1 (48 crimes)
5d	(d) Vehicle crime per 1,000 population.	4.77 (2331 crimes)	4.4 (2136 crimes)	4.77 (2331 crimes)
5e	(e) Life threatening crime and gun crime per 1,000 population.	0.28 (139 crimes)	NEW	0.28
6a	Number of notifiable/recorded offences resulting in convictions, caution or taken into consideration at court	10,730	12872	11,068
6b	% of notifiable/recorded offences resulting in convictions, caution or taken into consideration at court	33.2%	NEW	NEW
7a	% of notifiable/recorded offences resulting in charge, summons, caution or taken into consideration at court ('sanction detections')	32.5%	43%	31%
8a	Percentage of domestic violence incidents with a power of arrest where an arrest was made relating to the incident.	81.5%	80.0%	80%
9a(i)	I) Number of people killed in under 30 days or seriously injured in road traffic collisions	397 fatal or serious collisions	415 fatal or serious collisions	391 fatal or serious collisions
9a(ii)	(ii) Number of persons killed or seriously injured in road traffic collisions per 100million vehicle kilometres travelled.	8.26	8.63	8.13
10a	Using the British Crime Survey a) fear of crime	9%	10%	10%
10b	Perceptions of anti-social behaviour; and	NEW	NEW	NEW
10c	Perceptions of local drug use / drug dealing	NEW	NEW	NEW
11a	Percentage of police officer time spent on frontline duties	tbc	NEW	68.5%
12a	Delivery of cashable and non-cashable efficiency targets	NEW	NEW	NEW
13a	Average number of working hours lost due to sickness per police officer.	92.8 hours	NEW	92.8 hours
13b	Average number of working hours lost due to sickness by police staff.	80.7 hours	NEW	80.7 hours