



Heddlu Dyfed-Powys Police

CRIME TRENDS UPDATE June 2005

Contents:

Headline Statistics	2
Most Frequent Recorded Offences Profile	3
Recorded Crimes and Detection Rates	4
Domestic Burglaries and Detection Rates	5
Violent Crime and Detection Rates	6
Vehicle Crime and Detection Rates	7
Criminal Damage and Detection Rates	8
Drugs Statistics and Detection Rates	9
Section Level Sanction Detection Summary	10
Divisional Contribution to Targets	11
Domestic Incidents	15
Narrowing the Justice Gap	16
Road Traffic Collisions	17
PPAF Statutory Performance Indicator Summary	18

Heddlu Dyfed Powys Police: Corporate Services

Headline Statistics

DYFED-POWYS POLICE

APRIL - JUNE 2005

Recorded Crime:

- Total Recorded Crime is down by 2% (-169 crimes) compared to the same period last year (SPLY) to stand at 8443 crimes. The monthly figure for June 2005 stands at 2,837 – an increase of 8% (+207 offences) on the same month in 2004, but 3% (-82 offences) down on the preceding month May 2005.
- Recorded detection performance continues to improved, with the total detection rate for the force at 41% (3439 total detections) compared with 38% the previous year. The volume of total detections has increased by 5% (+162 detections). The sanction detection rate stands at 34% (compared with 28% last year) with the volume increasing by 456 or 19%. This is consistent with the target of 31%.

Domestic Burglary:

- Total Domestic Burglary is down by 21% (-56 crimes) compared to the same period last year (SPLY) to stand at 208 crimes. The monthly figure for June 2005 stands at 79 – a fall of 4% (-3 offences) on the same month in 2004, but a 3% (+2 offences) increase on the preceding month May 2005.
- Recorded detection performance has improved, with the total detection rate for the force at 24% (50 detections) compared with 25% the previous year. The volume of total detections has decreased by 25% (-17) as a consequence of falling offences. The sanction detection rate stands at 23% (compared with 22% last year) with the volume falling by 17% (-10).

Violent Crimes:

- Total Violent crime is down by 6% (-152 crimes) compared to the same period last year (SPLY) to stand at 2269 crimes. The monthly figure for June 2005 stands at 766 – an increase of 2% (+18 offences) on the same month in 2004, but a 3% (-29 offences) fall on the preceding month May 2005.
- Recorded detection performance has improved, with the total detection rate for the force at 58% (1308 detections) unchanged from the previous year. The volume of total detections has decreased by 7% (-105) as a consequence of falling offences. The sanction detection rate stands at 43% (compared with 37% last year) with the volume up by 9% (+84 sanction detections).

Vehicle Crime:

- Total Vehicle crime is down by 17% (-102 crimes) compared to the same period last year (SPLY) to stand at 508 crimes. The monthly figure for June 2005 stands at 154 – a fall of 14% (-27 offences) on the same month in 2004, and a 20% fall (-39 offences) on the preceding month May 2005.
- Recorded total detection stands at 15% (75 detections) down from 17% the previous year. The volume of total detections has decreased by 26% (-27) as a consequence of falling offences. The sanction detection rate stands at 12% (compared with 15% last year) with the volume down considerably (-28 detections or 31%).

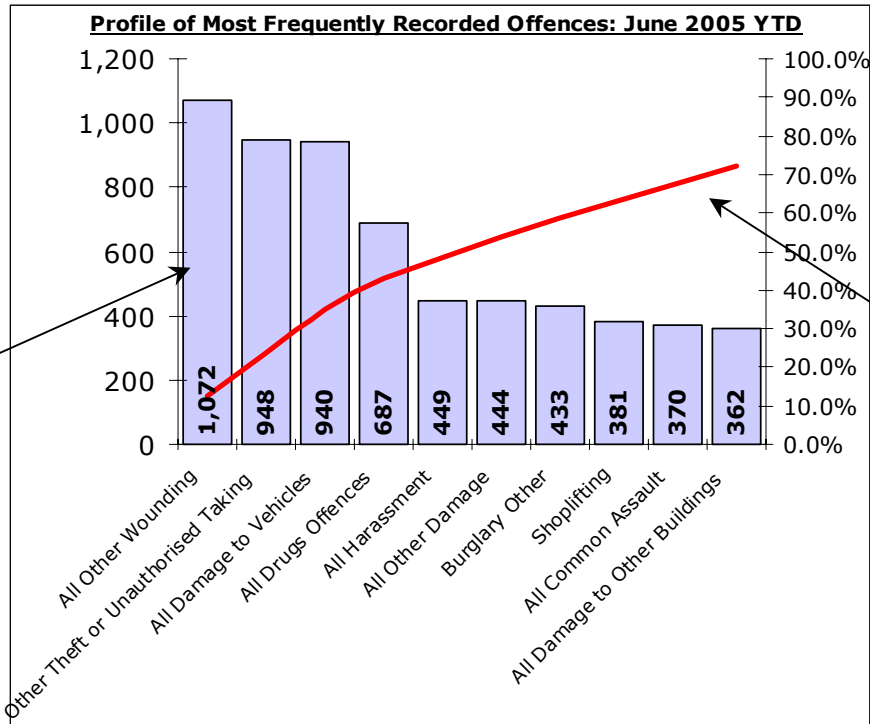
Criminal Damage:

- Total Criminal Damage is down by 3% (-72 crimes) compared to the same period last year (SPLY) to stand at 2083 (excl Arson & Threat to Commit CD). The monthly figure for June 2005 stands at 673 – an increase of 14% (+81 offences) on the same month in 2004, but a 10% fall (-75 offences) on the preceding month May 2005.
- Recorded detection performance has improved, with the total detection rate for the force at 25% (518 total detections) an increase on 23% recorded the previous year. The volume of total detections has increased by 5% (+24) despite falling levels of offences. The sanction detection rate stands at 19% (compared with 16% last year) with the volume down up by 19% (+65 sanction).

Most Frequent Recorded Offences Profile

DYFED-POWYS POLICE

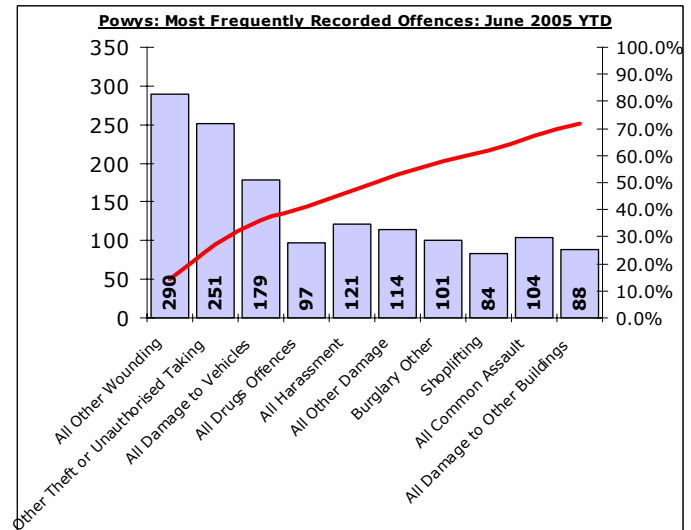
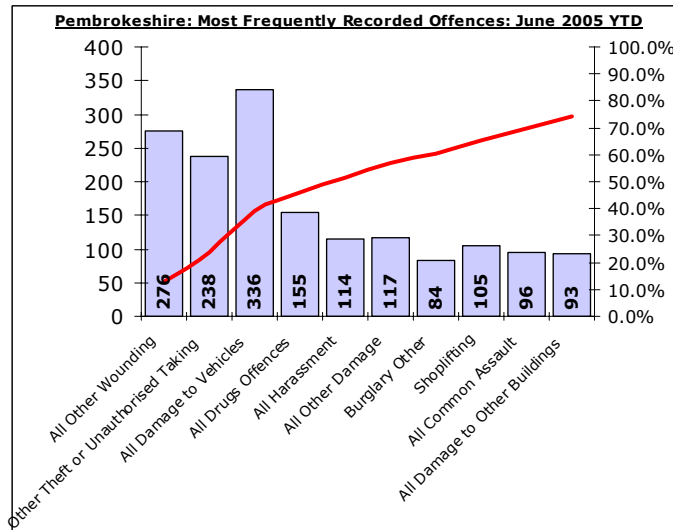
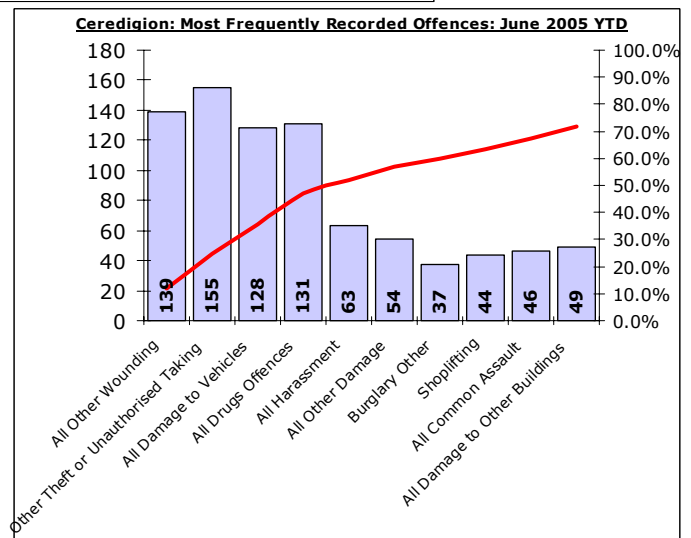
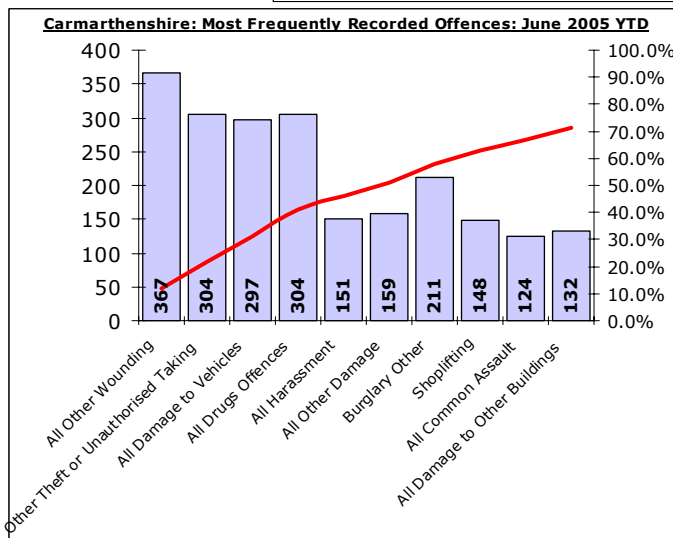
June 2005 YTD (Note : Divisional profiles in the same sequence as force most frequent categories)



Recorded offences in each category in order of volume.

(Note these can include a number of sub-categories)

The cumulative contribution of these offence categories toward the total volume of offences recorded.

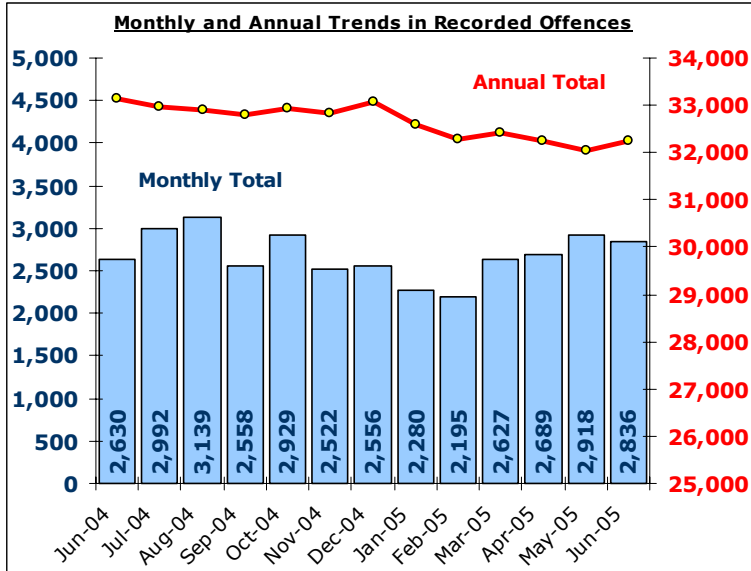


Total Recorded Crime

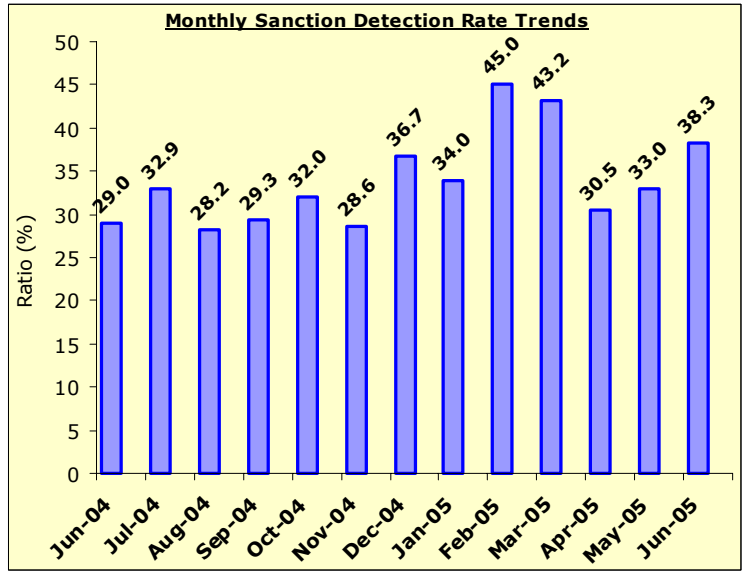
DYFED-POWYS POLICE

TARGET 2005/06 : NO TARGET

Recorded Crime Levels – June 2005

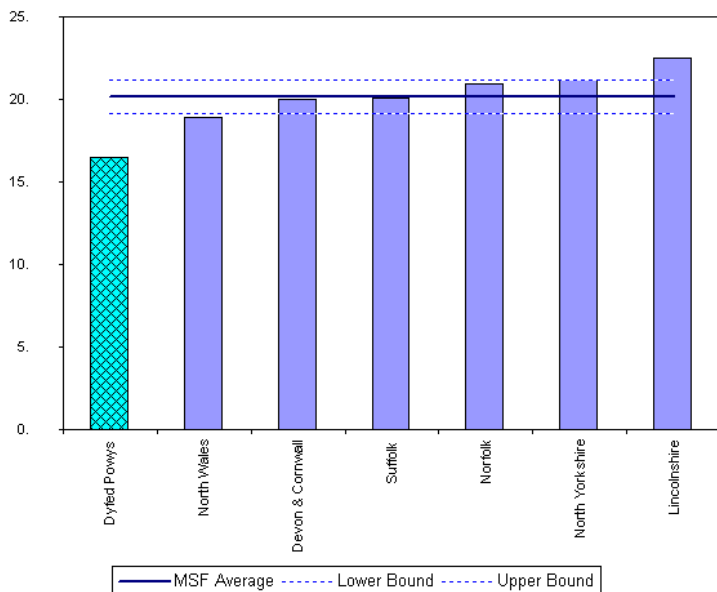


Monthly Sanction Detection Rates – June 2005

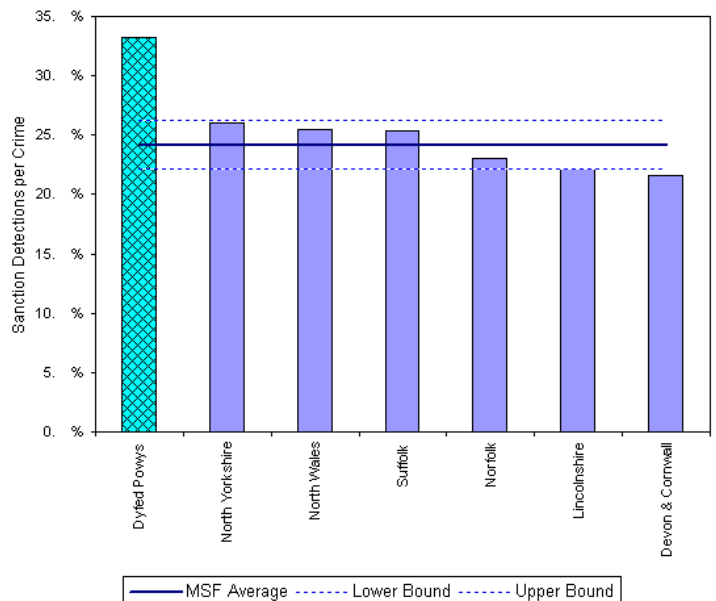


Total Recorded Crimes: June 2005 YTD	June 2005 YTD			Detection Rates		Annual Trends - SPLY		
	Crimes	Sanction Dets	Total Dets	Sanction %	Total %	Crimes SPLY	Change	% Change
FORCE	8,443	2,869	3,439	34.0%	40.7%	8,610	- 167	- 1.9%
CARMS	3,091	1,076	1,289	34.8%	41.7%	3,572	- 481	- 13.5%
CERED	1,182	424	486	35.9%	41.1%	1,169	+ 13	+ 1.1%
PEMBS	2,177	745	898	34.2%	41.2%	2,035	+ 142	+ 7.0%
POWYS	1,993	624	766	31.3%	38.4%	1,834	+ 159	+ 8.7%

MSF – Crimes per 1000 Residents 01 Mar 2005 – 31 May 2005



MSF – Sanction detections (annual): 01 June 2004 – 31 May 2005



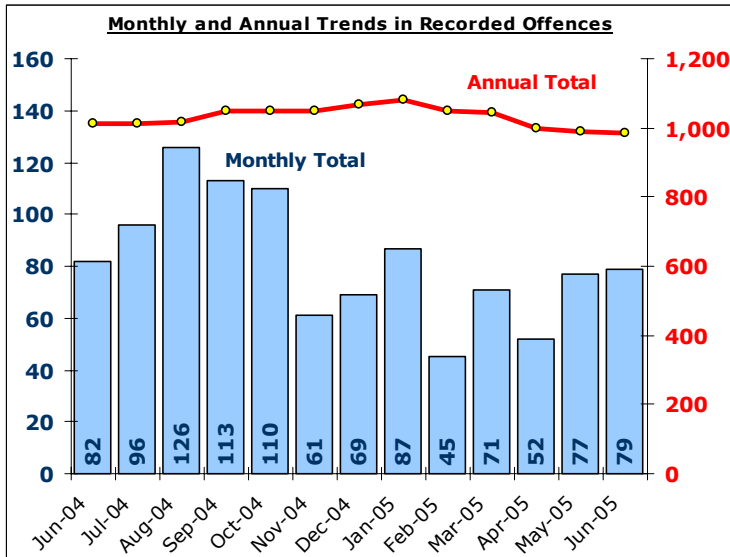
Barbent MSF - Sanction Detections per Crime-Dyfed Powys-All Crimes-01 Jun 2004 - 31 May 2005

Domestic Burglary

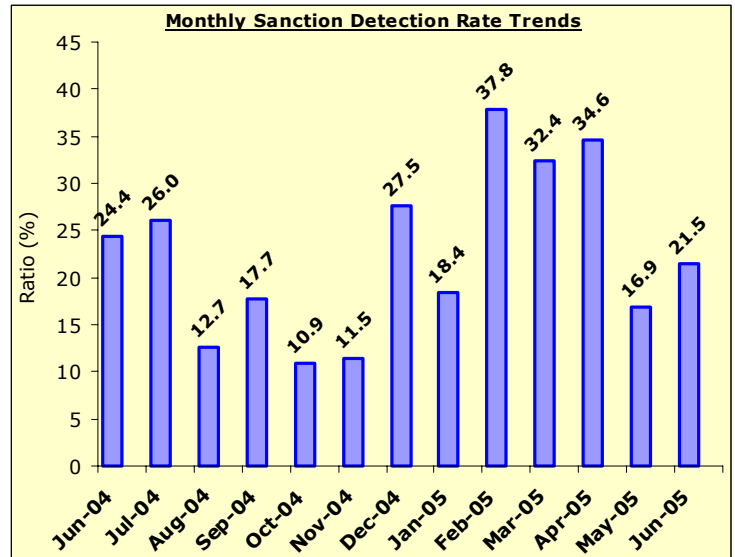
DYFED-POWYS POLICE

TARGET 2005/06 : 0% Increase in offences & 28% total detection rate

Recorded Crime Levels – June 2005

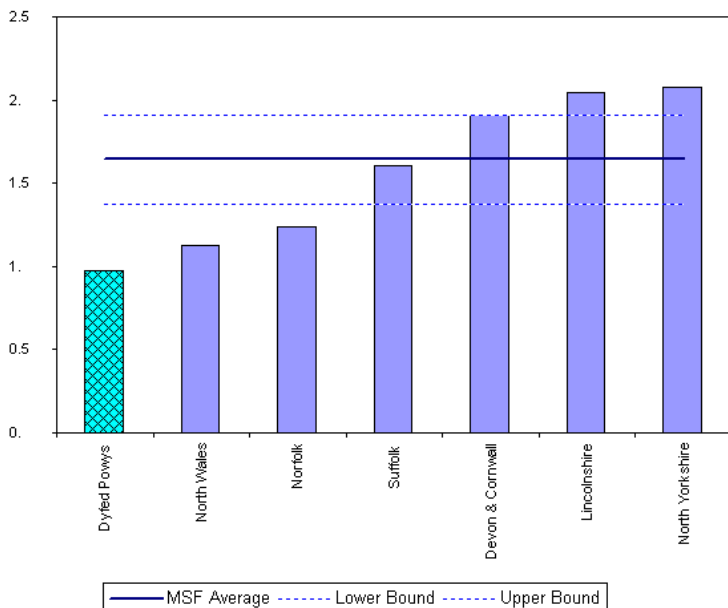


Monthly Sanction Detection Rates – June 2005

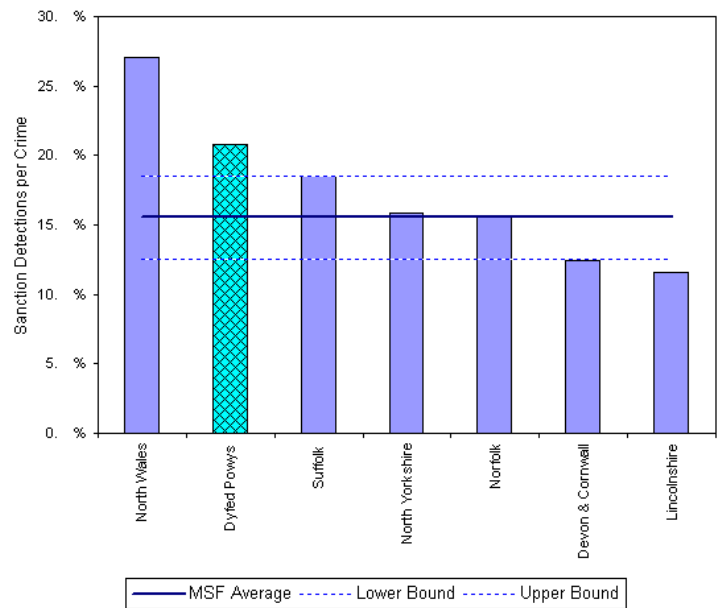


Total Domestic Burglary: June 2005 YTD	June 2005 YTD			Detection Rates		Annual Trends - SPLY		
	Crimes	Sanction Dets	Total Dets	Sanction %	Total %	Crimes SPLY	Change	% Change
FORCE	208	48	50	23.1%	24.0%	264	- 56	- 21.2%
CARMS	77	12	12	15.6%	15.6%	120	- 43	- 35.8%
CERED	20	5	5	25.0%	25.0%	25	- 5	- 20.0%
PEMBS	56	17	19	30.4%	33.9%	61	- 5	- 8.2%
POWYS	55	14	14	25.5%	25.5%	58	- 3	- 5.2%

MSF – Crimes per 1000 Residents 01 Mar 2005 – 31 May 2005



MSF – Sanction detections (annual): 01 June 2004 – 31 May 2005

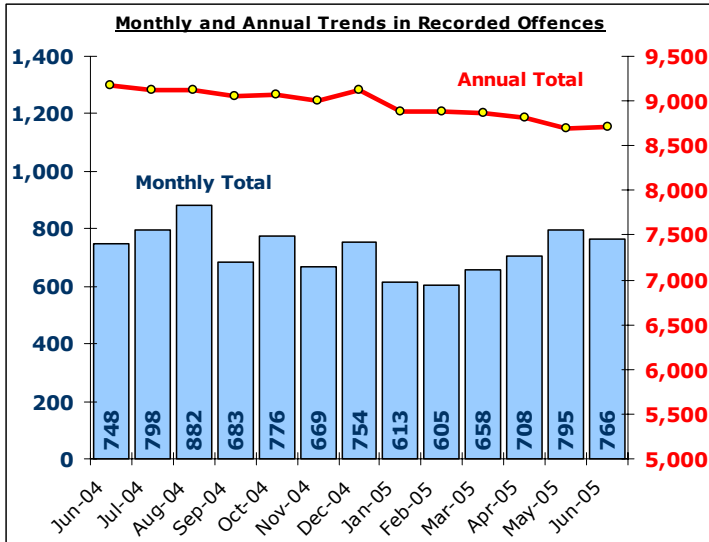


Total Violent Crime

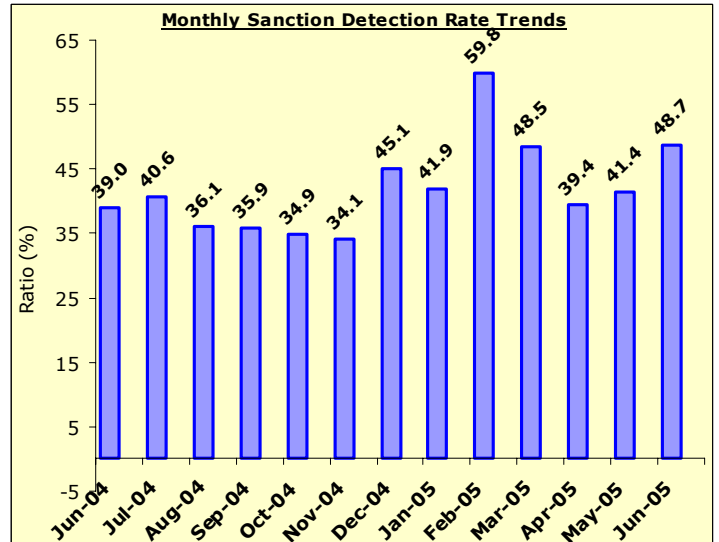
DYFED-POWYS POLICE

TARGET 2005/06 – 3% Reduction in offences & 60% total detection rate

Recorded Crime Levels – June 2005

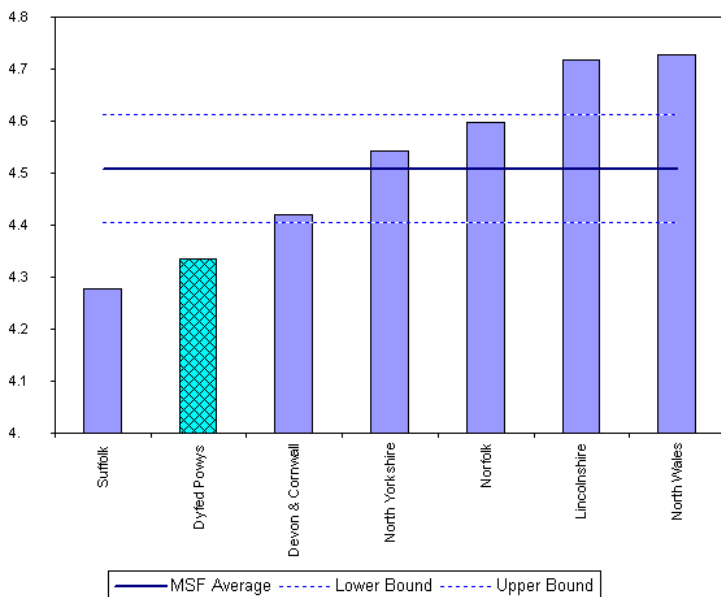


Monthly Sanction Detection Rates – June 2005

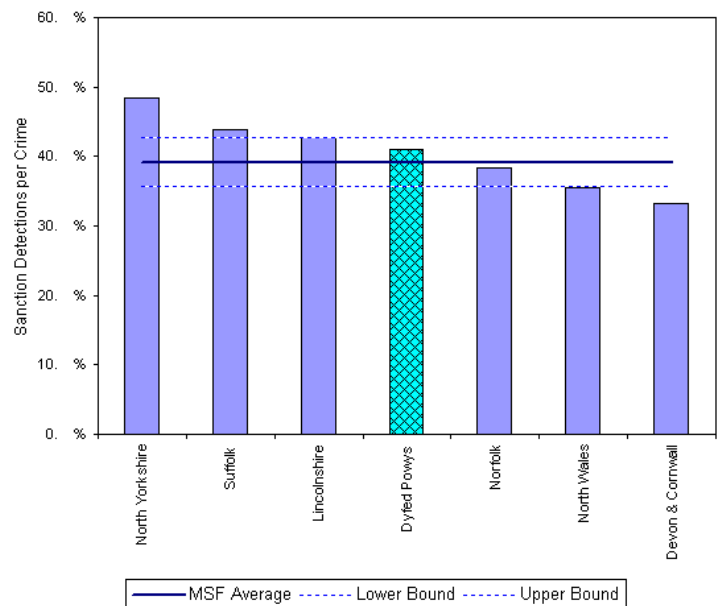


Total Violent Crimes: June 2005 YTD	June 2005 YTD			Detection Rates		Annual Trends - SPLY		
	Crimes	Sanction Dets	Total Dets	Sanction %	Total %	Crimes SPLY	Change	% Change
FORCE	2,269	981	1,308	43.2%	57.6%	2,421	- 152	- 6.3%
CARMS	783	347	461	44.3%	58.9%	976	- 193	- 19.8%
CERED	316	135	173	42.7%	54.7%	333	- 17	- 5.1%
PEMBS	555	240	331	43.2%	59.6%	621	- 66	- 10.6%
POWYS	615	259	343	42.1%	55.8%	491	+ 124	+ 25.3%

MSF – Crimes per 1000 Residents 01 Mar 2005 – 31 May 2005



MSF – Sanction detections (annual): 01 June 2004 – 30 Apr 2005



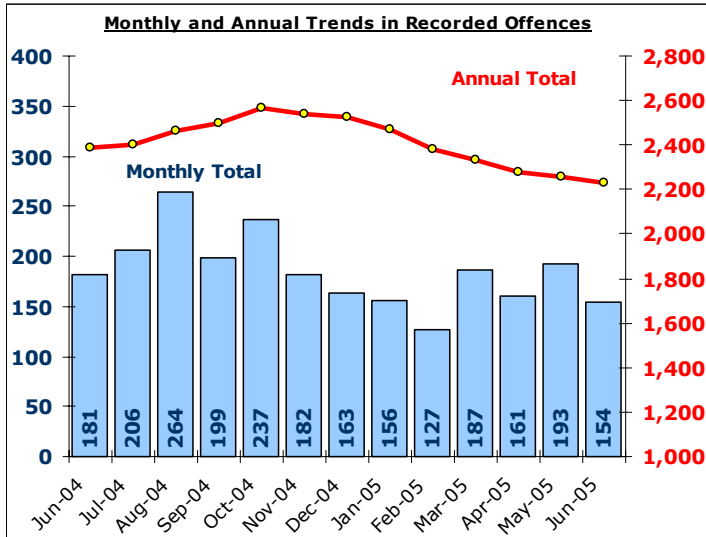
Bar chart MSF - Sanction Detections per Crime-Dyfed Powys-Violent Crimes-01 Jun 2004 - 31 May 2005

Total Vehicle Crime

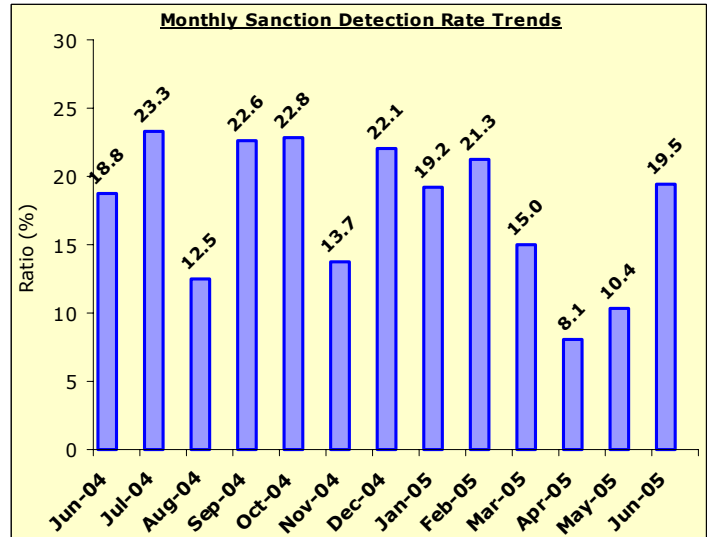
DYFED-POWYS POLICE

TARGET 2005/06 : 0% Increase in offences & 20% total detection rate

Recorded Crime Levels – June 2005

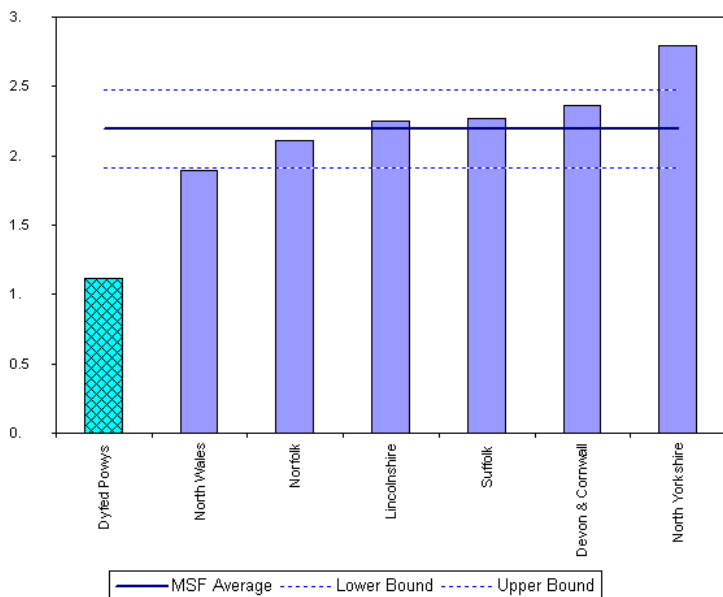


Monthly Sanction Detection Rates – June 2005

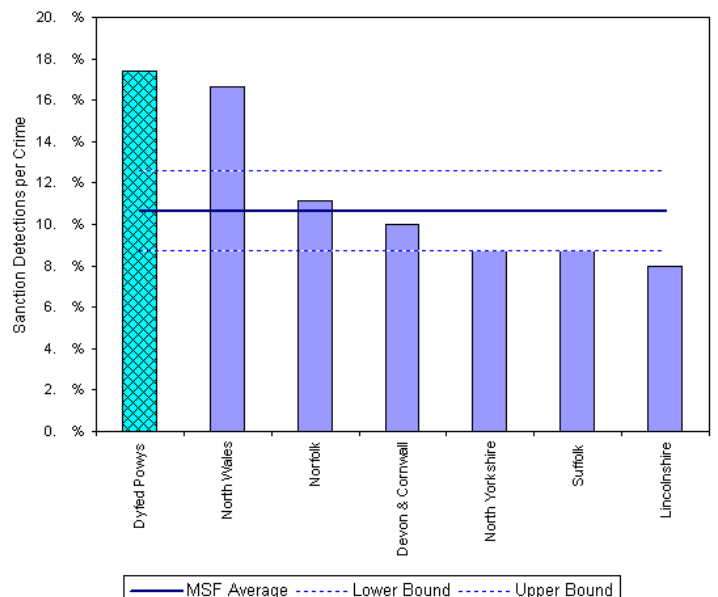


Total Vehicle Crimes: June 2005 YTD	June 2005 YTD			Detection Rates		Annual Trends - SPL Y		
	Crimes	Sanction Dets	Total Dets	Sanction %	Total %	Crimes SPL Y	Change	% Change
FORCE	508	63	75	12.4%	14.8%	610	- 102	- 16.7%
CARMS	208	27	31	13.0%	14.9%	298	- 90	- 30.2%
CERED	60	11	12	18.3%	20.0%	57	+ 3	+ 5.3%
PEMBS	128	16	19	12.5%	14.8%	134	- 6	- 4.5%
POWYS	112	9	13	8.0%	11.6%	121	- 9	- 7.4%

MSF – Crimes per 1000 Residents 01 Mar 2005 – 31 May 2005



MSF – Sanction detections (annual): 01 June 2004 – 31 May 2005



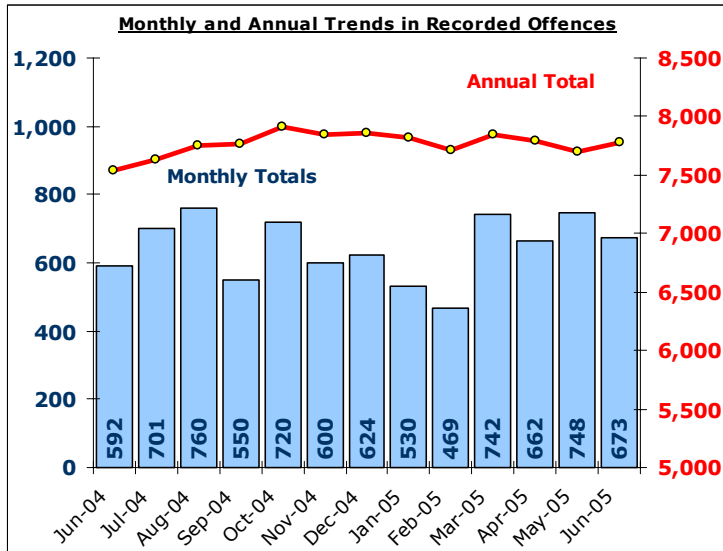
Bar chart MSF - Sanction Detections per Crime - Dyfed Powys - Vehicle Crime (including Vehicle Interference) 01 Jun 2004 - 31 May 2005

Total Criminal Damage

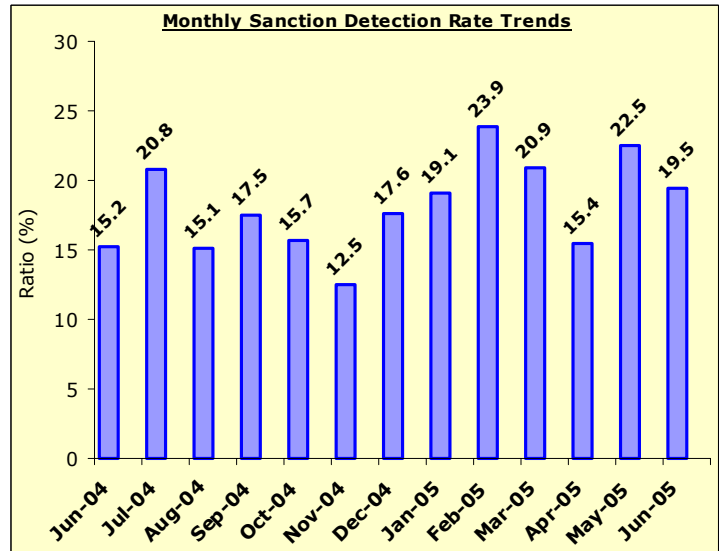
EXCLUDES ARSON % THREAT TO COMMIT CRIMINAL DAMAGE (HOC 56 & 59)

TARGET 2005/06 : NO TARGET

Recorded Crime Levels – June 2005

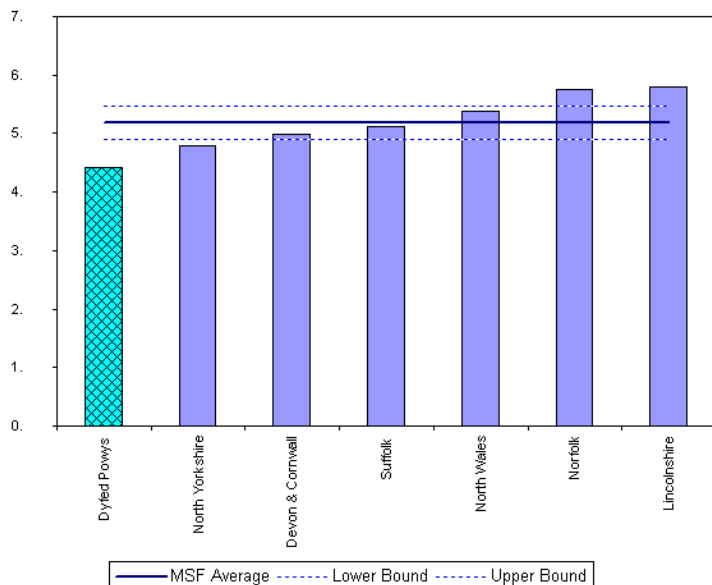


Monthly Sanction Detection Rates – June 2005

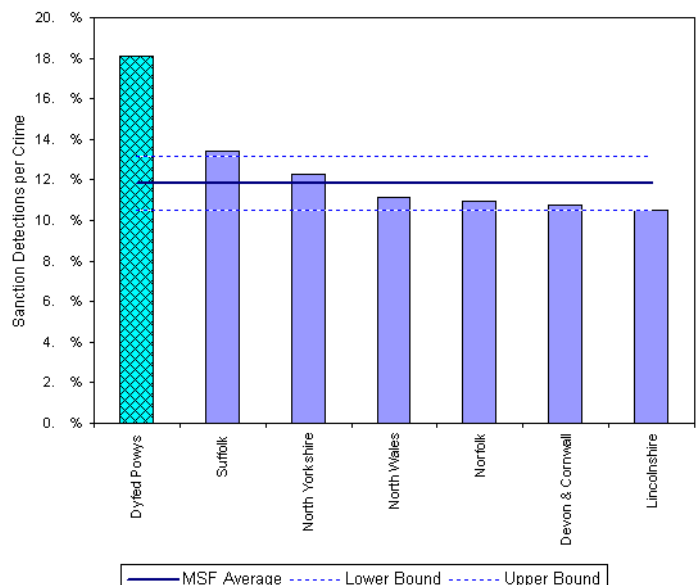


Total Criminal Damage: June 2005 YTD	June 2005 YTD			Detection Rates		Annual Trends - SPLY		
	Crimes	Sanction Dets	Total Dets	Sanction %	Total %	Crimes SPLY	Change	% Change
FORCE	2,083	401	518	19.3%	24.9%	2,155	- 72	- 3.3%
CARMS	718	120	160	16.7%	22.3%	875	- 157	- 17.9%
CERED	275	41	50	14.9%	18.2%	244	+ 31	+ 12.7%
PEMBS	641	147	177	22.9%	27.6%	544	+ 97	+ 17.8%
POWYS	449	93	131	20.7%	29.2%	492	- 43	- 8.7%

MSF – Crimes per 1000 Residents 01 Mar 2005 – 31 May 2005



MSF – Sanction detections (annual): 01 June 2004 – 31 May 2005



Barchart MSF - Sanction Detections per Crime-Dyfed Powys-Criminal Damage (exc 53)-01 Jun 2004 - 31 May 2005

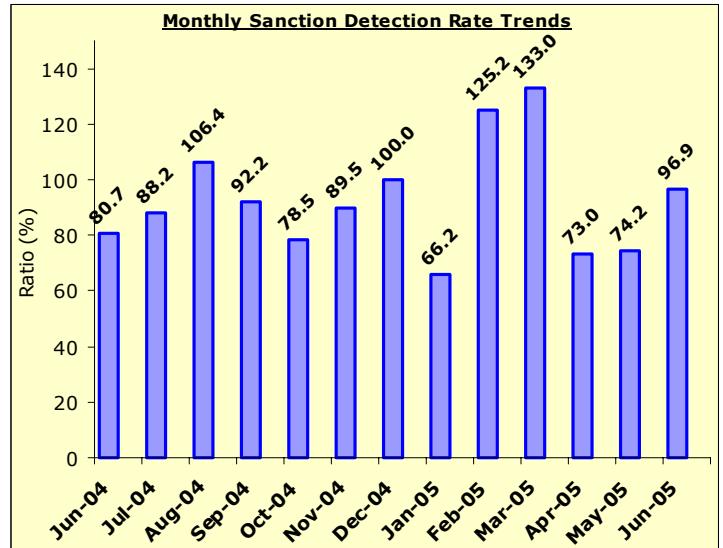
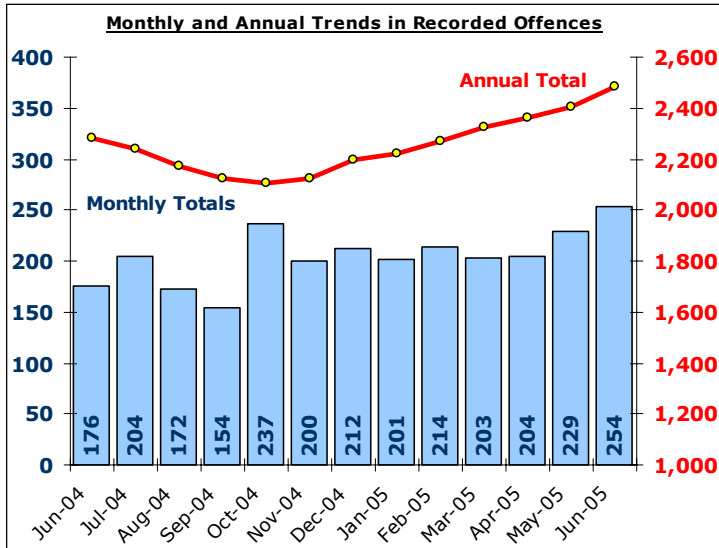
Total Drug Offences

DYFED-POWYS POLICE

TARGET 2005/06 : NO TARGET

Recorded Crime Levels – June 2005

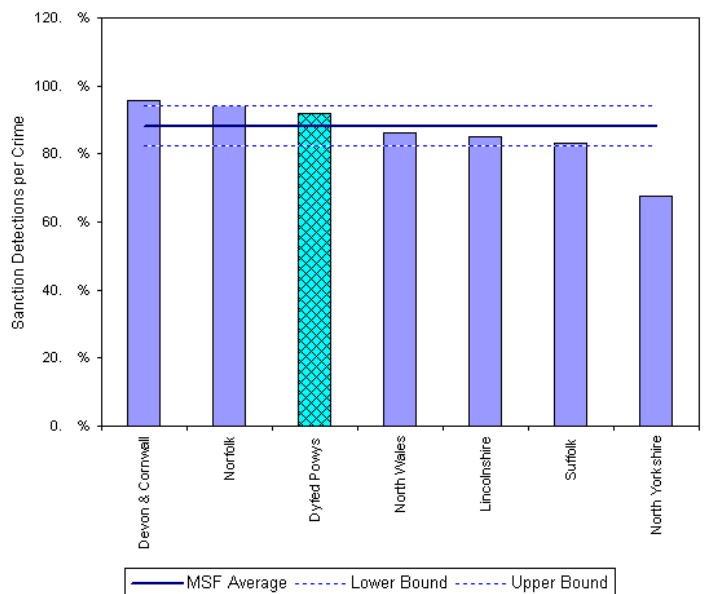
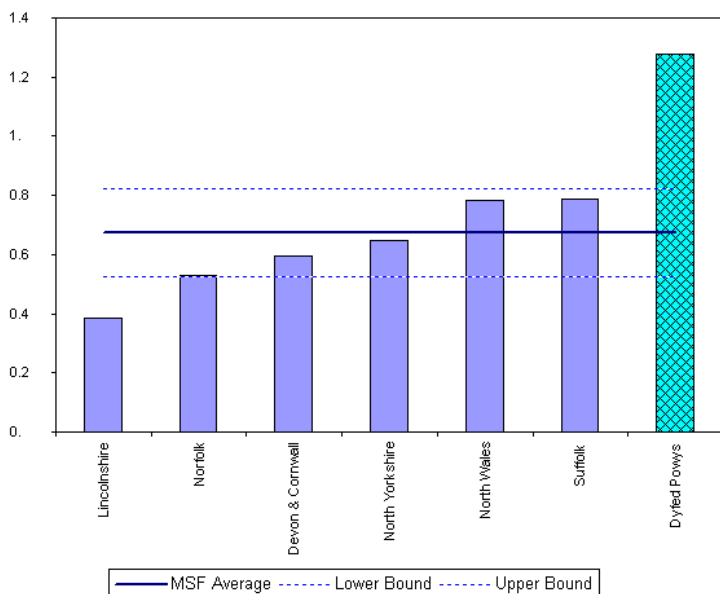
Monthly Sanction Detection Rates – June 2005



Total Drug Offences: June 2005 YTD	June 2005 YTD			Detection Rates		Annual Trends - SPLY		
	Crimes	Sanction Dets	Total Dets	Sanction %	Total %	Crimes SPLY	Change	% Change
FORCE	687	565	617	82.2%	89.8%	530	+ 157	+ 29.6%
CARMS	304	259	293	85.2%	96.4%	187	+ 117	+ 62.6%
CERED	131	121	124	92.4%	94.7%	124	+ 7	+ 5.6%
PEMBS	155	115	126	74.2%	81.3%	137	+ 18	+ 13.1%
POWYS	97	70	74	72.2%	76.3%	82	+ 15	+ 18.3%

MSF – Crimes per 1000 Residents 01 Mar 2005 – 31 May 2005

MSF – Sanction detections (annual): 01 June 2004 – 31 May 2005



Section Level Sanction Detection Summary

DYFED-POWYS POLICE

TARGET 2005/06 : 31% SANCTION DETECTION RATE

Sanction Detections Performance: Total Recorded Crimes

Sanction Detection Rate	Recorded	Detected	Det Ratio	Recorded	Diff	% Change
THE FORCE	8,443	2,869	34.0%	8,610	- 167	- 1.9%
Carmarthenshire	3,091	1,076	34.8%	3,572	- 481	- 13.5%
Ammanford (AA)	432	212	49.1%	412	+ 20	+ 4.9%
Carmarthen (AC)	755	305	40.4%	840	- 85	- 10.1%
Llanelli (AL)	1,508	446	29.6%	1,898	- 390	- 20.5%
Towy Gwendraeth (AT)	396	113	28.5%	422	- 26	- 6.2%
Ceredigion	1,182	424	35.9%	1,169	+ 13	+ 1.1%
Aberystwyth (BA)	619	248	40.1%	609	+ 10	+ 1.6%
Aberaeron (BB)	118	53	44.9%	146	- 28	- 19.2%
Cardigan (BC)	315	80	25.4%	289	+ 26	+ 9.0%
Lampeter (BL)	130	43	33.1%	125	+ 5	+ 4.0%
Pembrokeshire	2,177	745	34.2%	2,035	+ 142	+ 7.0%
Fishguard (CF)	234	74	31.6%	244	- 10	- 4.1%
Haverfordwest (CH)	506	156	30.8%	560	- 54	- 9.6%
Milford Haven (CM)	421	160	38.0%	455	- 34	- 7.5%
Pembroke Dock (CP)	621	237	38.2%	388	+ 233	+ 60.1%
Tenby (CT)	395	118	29.9%	388	+ 7	+ 1.8%
Powys	1,993	624	31.3%	1,834	+ 159	+ 8.7%
Brecon (DB)	484	124	25.6%	385	+ 99	+ 25.7%
Llandrindod Wells (DL)	331	117	35.3%	350	- 19	- 5.4%
Newtown (DN)	642	196	30.5%	491	+ 151	+ 30.8%
Welshpool (DW)	367	123	33.5%	391	- 24	- 6.1%
Ystradgynlais (DY)	169	64	37.9%	217	- 48	- 22.1%

Sanction Detection Performance: Domestic Burglary, Violent Crime & Vehicle Crime

Sanction Detections	Total Domestic Burglary			Total Violent Crime			Total Vehicle Crime		
	Recorded	Detected	Det Ratio	Recorded	Detected	Det Ratio	Recorded	Detected	Det Ratio
THE FORCE	208	48	23.1%	2,269	981	43.2%	508	63	12.4%
Carmarthenshire	77	12	15.6%	783	347	44.3%	208	27	13.0%
Ammanford (AA)	10	3	30.0%	76	37	48.7%	28	7	25.0%
Carmarthen (AC)	14	4	28.6%	220	120	54.5%	29	3	10.3%
Llanelli (AL)	42	2	4.8%	383	146	38.1%	125	14	11.2%
Towy Gwendraeth (AT)	11	3	27.3%	104	44	42.3%	26	3	11.5%
Ceredigion	20	5	25.0%	316	135	42.7%	60	11	18.3%
Aberystwyth (BA)	12	4	33.3%	173	92	53.2%	25	5	20.0%
Aberaeron (BB)	1	1	100.0%	25	15	60.0%	9	0	0.0%
Cardigan (BC)	5	0	0.0%	83	21	25.3%	16	3	18.8%
Lampeter (BL)	2	0	0.0%	35	7	20.0%	10	3	30.0%
Pembrokeshire	56	17	30.4%	555	240	43.2%	128	16	12.5%
Fishguard (CF)	4	1	25.0%	60	23	38.3%	17	2	11.8%
Haverfordwest (CH)	22	5	22.7%	148	52	35.1%	17	2	11.8%
Milford Haven (CM)	9	4	44.4%	123	52	42.3%	21	5	23.8%
Pembroke Dock (CP)	14	4	28.6%	136	59	43.4%	36	4	11.1%
Tenby (CT)	7	3	42.9%	88	54	61.4%	37	3	8.1%
Powys	55	14	25.5%	615	259	42.1%	112	9	8.0%
Brecon (DB)	5	0	0.0%	137	57	41.6%	39	1	2.6%
Llandrindod Wells (DL)	16	8	50.0%	93	45	48.4%	14	1	7.1%
Newtown (DN)	23	3	13.0%	215	76	35.3%	29	3	10.3%
Welshpool (DW)	10	3	30.0%	116	58	50.0%	19	2	10.5%
Ystradgynlais (DY)	1	0	0.0%	54	23	42.6%	11	2	18.2%

Target Contribution Summary - Carmarthenshire

DYFED-POWYS POLICE

GREEN/RED indicates current performance **consistent** or **not consistent** with force target reduction & detection rate

CARMARTHENSHIRE		April-June YTD		Last Year		Indicator
CRIME	Performance	Indicator	Performance	Indicator	Change & Detection	
Total Crime Recorded (per 1,000 population)	3091	17.9	3573	20.7	-13.5%	
Detection (% rate)	1289	41.7%	1288	36.0%	41.7%	
Burglary Dwelling (per 1,000 households)	77	1.1	120	1.6	-35.8%	
Detection (% rate)	12	15.6%	26	21.7%	15.6%	
Total Violent Crime (per 1,000 population)	783	4.5	977	5.7	-19.9%	
Detection (% rate)	461	58.9%	552	56.5%	58.9%	
Autocrime per (1,000 population)	208	1.2	298	1.7	-30.2%	
Detection (% rate)	31	14.9%	52	17.4%	14.9%	
Ammanford		April-June YTD		Last Year		Indicator
CRIME	Performance	Indicator	Performance	Indicator	Change & Detection	
Total Crime Recorded (per 1,000 population)	432	13.2	412	12.6	4.9%	
Detection (% rate)	233	53.9%	202	49.0%	53.9%	
Burglary Dwelling (per 1,000 households)	10	0.7	9	0.7	11.1%	
Detection (% rate)	3	30.0%	4	44.4%	30.0%	
Total Violent Crime (per 1,000 population)	76	2.3	106	3.2	-28.3%	
Detection (% rate)	47	61.8%	77	72.6%	61.8%	
Autocrime per (1,000 population)	28	0.9	17	0.5	64.7%	
Detection (% rate)	7	25.0%	3	17.6%	25.0%	
Carmarthen		April-June YTD		Last Year		Indicator
CRIME	Performance	Indicator	Performance	Indicator	Change & Detection	
Total Crime Recorded (per 1,000 population)	755	15.3	840	17.0	-10.1%	
Detection (% rate)	350	46.4%	355	42.3%	46.4%	
Burglary Dwelling (per 1,000 households)	14	0.7	19	0.9	-26.3%	
Detection (% rate)	4	28.6%	2	10.5%	28.6%	
Total Violent Crime (per 1,000 population)	220	4.4	248	5.0	-11.3%	
Detection (% rate)	150	68.2%	157	63.3%	68.2%	
Autocrime per (1,000 population)	29	0.6	47	1.0	-38.3%	
Detection (% rate)	3	10.3%	4	8.5%	10.3%	
Llanelli		April-June YTD		Last Year		Indicator
CRIME	Performance	Indicator	Performance	Indicator	Change & Detection	
Total Crime Recorded (per 1,000 population)	1508	24.9	1899	31.4	-20.6%	
Detection (% rate)	571	37.9%	565	29.8%	37.9%	
Burglary Dwelling (per 1,000 households)	42	1.6	77	2.9	-45.5%	
Detection (% rate)	2	4.8%	17	22.1%	4.8%	
Total Violent Crime (per 1,000 population)	383	6.3	512	8.5	-25.2%	
Detection (% rate)	211	55.1%	254	49.6%	55.1%	
Autocrime per (1,000 population)	125	2.1	195	3.2	-35.9%	
Detection (% rate)	17	13.6%	43	22.1%	13.6%	
Towy/Gwenraeth		April-June YTD		Last Year		Indicator
CRIME	Performance	Indicator	Performance	Indicator	Change & Detection	
Total Crime Recorded (per 1,000 population)	396	13.1	422	14.0	-6.2%	
Detection (% rate)	135	34.1%	166	39.3%	34.1%	
Burglary Dwelling (per 1,000 households)	11	0.9	15	1.2	-26.7%	
Detection (% rate)	3	27.3%	3	20.0%	27.3%	
Total Violent Crime (per 1,000 population)	104	3.4	111	3.7	-6.3%	
Detection (% rate)	53	51.0%	64	57.7%	51.0%	
Autocrime per (1,000 population)	26	0.9	39	1.3	-33.3%	
Detection (% rate)	4	15.4%	2	5.1%	15.4%	

Target Contribution Summary - Ceredigion

DYFED-POWYS POLICE

GREEN/RED indicates current performance **consistent** or **not consistent** with force target reduction & detection rate

CEREDIGION		April-June YTD		Last Year		Indicator
CRIME	Performance	Indicator	Performance	Indicator	Change & Detection	
Total Crime Recorded (per 1,000 population)	1182	15.8	1169	15.6	1.1%	
Detection (% rate)	486	41.1%	497	42.5%	41.1%	
Burglary Dwelling (per 1,000 households)	20	0.6	25	0.8	-20.0%	
Detection (% rate)	5	25.0%	8	32.0%	25.0%	
Total Violent Crime (per 1,000 population)	316	4.2	333	4.4	-5.1%	
Detection (% rate)	173	54.7%	167	50.2%	54.7%	
Autocrime per (1,000 population)	60	0.8	57	0.8	5.3%	
Detection (% rate)	12	20.0%	9	15.8%	20.0%	
Ceredigion North		April-June YTD		Last Year		Indicator
CRIME	Performance	Indicator	Performance	Indicator	Change & Detection	
Total Crime Recorded (per 1,000 population)	619	19.5	609	19.1	1.6%	
Detection (% rate)	269	43.5%	299	49.1%	43.5%	
Burglary Dwelling (per 1,000 households)	12	1.0	11	0.9	9.1%	
Detection (% rate)	4	33.3%	4	36.4%	33.3%	
Total Violent Crime (per 1,000 population)	173	5.4	176	5.5	-1.7%	
Detection (% rate)	104	60.1%	99	56.3%	60.1%	
Autocrime per (1,000 population)	25	0.8	25	0.8	0.0%	
Detection (% rate)	5	20.0%	3	12.0%	20.0%	
Ceredigion South		April-June YTD		Last Year		Indicator
CRIME	Performance	Indicator	Performance	Indicator	Change & Detection	
Total Crime Recorded (per 1,000 population)	563	13.1	560	13.0	0.5%	
Detection (% rate)	217	38.5%	194	34.6%	38.5%	
Burglary Dwelling (per 1,000 households)	8	0.4	14	0.8	-42.9%	
Detection (% rate)	1	12.5%	4	28.6%	12.5%	
Total Violent Crime (per 1,000 population)	143	3.3	157	3.7	-8.9%	
Detection (% rate)	69	48.3%	68	43.3%	48.3%	
Autocrime per (1,000 population)	35	0.8	32	0.7	9.4%	
Detection (% rate)	7	20.0%	6	18.8%	20.0%	

Ceredigion South is an area used for comparison purposes only. It incorporates the three section areas of Lampeter/Aberaeron and Cardigan. Details on these three discrete areas is also included here for information.

Aberaeron		April-June YTD		Last Year		Indicator
CRIME	Performance	Indicator	Performance	Indicator	Change & Detection	
Total Crime Recorded (per 1,000 population)	118	9.3	146	11.5	-19.2%	
Detection (% rate)	56	47.5%	36	24.7%	47.5%	
Burglary Dwelling (per 1,000 households)	1	0.2	5	0.9	-80.0%	
Detection (% rate)	1	100.0%	3	60.0%	100.0%	
Total Violent Crime (per 1,000 population)	25	2.0	38	3.0	-34.2%	
Detection (% rate)	15	60.0%	14	36.8%	60.0%	
Autocrime per (1,000 population)	9	0.7	9	0.7	0.0%	
Detection (% rate)	1	11.1%	2	22.2%	11.1%	
Cardigan		April-June YTD		Last Year		Indicator
CRIME	Performance	Indicator	Performance	Indicator	Change & Detection	
Total Crime Recorded (per 1,000 population)	315	16.7	289	15.3	9.0%	
Detection (% rate)	103	32.7%	117	40.5%	32.7%	
Burglary Dwelling (per 1,000 households)	5	0.6	6	0.7	-16.7%	
Detection (% rate)	0	0.0%	1	16.7%	0.0%	
Total Violent Crime (per 1,000 population)	83	4.4	86	4.6	-3.5%	
Detection (% rate)	37	44.6%	38	44.2%	44.6%	
Autocrime per (1,000 population)	16	0.8	15	0.8	6.7%	
Detection (% rate)	3	18.8%	4	26.7%	18.8%	
Lampeter		April-June YTD		Last Year		Indicator
CRIME	Performance	Indicator	Performance	Indicator	Change & Detection	
Total Crime Recorded (per 1,000 population)	130	11.2	125	10.8	4.0%	
Detection (% rate)	58	44.6%	41	32.8%	44.6%	
Burglary Dwelling (per 1,000 households)	2	0.4	3	0.6	-33.3%	
Detection (% rate)	0	0.0%	0	0.0%	0.0%	
Total Violent Crime (per 1,000 population)	35	3.0	33	2.8	6.1%	
Detection (% rate)	17	48.6%	16	48.5%	48.6%	
Autocrime per (1,000 population)	10	0.9	8	0.7	25.0%	
Detection (% rate)	3	30.0%	0	0.0%	30.0%	

Target Contribution Summary - Pembrokeshire

DYFED-POWYS POLICE

GREEN/RED indicates current performance **consistent** or **not consistent** with force target reduction & total detection rate

PEMBROKESHIRE		April-June YTD		Last Year		Indicator
CRIME	Performance	Indicator	Performance	Indicator	Change & Detection	
Total Crime Recorded (per 1,000 population)	2177	19.1	2036	17.8	6.9%	
Detection (% rate)	898	41.2%	876	43.0%	41.2%	
Burglary Dwelling (per 1,000 households)	54	1.1	61	1.3	-11.5%	
Detection (% rate)	18	33.3%	18	29.5%	33.3%	
Total Violent Crime (per 1,000 population)	555	4.9	621	5.4	-10.6%	
Detection (% rate)	331	59.6%	398	64.1%	59.6%	
Autocrime per (1,000 population)	128	1.1	134	1.2	-4.5%	
Detection (% rate)	19	14.8%	31	23.1%	14.8%	
Fishguard		April-June YTD		Last Year		Indicator
CRIME	Performance	Indicator	Performance	Indicator	Change & Detection	
Total Crime Recorded (per 1,000 population)	234	8.8	244	9.2	-4.1%	
Detection (% rate)	99	42.3%	124	50.8%	42.3%	
Burglary Dwelling (per 1,000 households)	4	0.4	9	0.8	-55.6%	
Detection (% rate)	2	50.0%	4	44.4%	50.0%	
Total Violent Crime (per 1,000 population)	60	2.3	60	2.3	0.0%	
Detection (% rate)	38	63.3%	46	76.7%	63.3%	
Autocrime per (1,000 population)	17	0.6	15	0.6	13.3%	
Detection (% rate)	3	17.6%	5	33.3%	17.6%	
Haverfordwest		April-June YTD		Last Year		Indicator
CRIME	Performance	Indicator	Performance	Indicator	Change & Detection	
Total Crime Recorded (per 1,000 population)	506	25.3	560	28.0	-9.6%	
Detection (% rate)	191	37.7%	244	43.6%	37.7%	
Burglary Dwelling (per 1,000 households)	22	2.6	20	2.4	10.0%	
Detection (% rate)	6	27.3%	6	30.0%	27.3%	
Total Violent Crime (per 1,000 population)	148	7.4	199	10.0	-25.6%	
Detection (% rate)	74	50.0%	118	59.3%	50.0%	
Autocrime per (1,000 population)	17	0.9	43	2.2	-60.5%	
Detection (% rate)	2	11.8%	11	25.6%	11.8%	
Milford Haven		April-June YTD		Last Year		Indicator
CRIME	Performance	Indicator	Performance	Indicator	Change & Detection	
Total Crime Recorded (per 1,000 population)	421	17.3	455	18.6	-7.5%	
Detection (% rate)	193	45.8%	186	40.9%	45.8%	
Burglary Dwelling (per 1,000 households)	9	0.9	9	0.9	0.0%	
Detection (% rate)	4	44.4%	3	33.3%	44.4%	
Total Violent Crime (per 1,000 population)	123	5.0	115	4.7	7.0%	
Detection (% rate)	74	60.2%	81	70.4%	60.2%	
Autocrime per (1,000 population)	21	0.9	20	0.8	5.0%	
Detection (% rate)	7	33.3%	6	30.0%	33.3%	
Pembroke Dock		April-June YTD		Last Year		Indicator
CRIME	Performance	Indicator	Performance	Indicator	Change & Detection	
Total Crime Recorded (per 1,000 population)	621	32.5	388	20.3	60.1%	
Detection (% rate)	285	45.9%	160	41.2%	45.9%	
Burglary Dwelling (per 1,000 households)	12	1.5	15	1.9	-20.0%	
Detection (% rate)	3	25.0%	3	20.0%	25.0%	
Total Violent Crime (per 1,000 population)	136	7.1	131	6.9	3.8%	
Detection (% rate)	84	61.8%	70	53.4%	61.8%	
Autocrime per (1,000 population)	36	1.9	27	1.4	33.3%	
Detection (% rate)	4	11.1%	6	22.2%	11.1%	
Tenby		April-June YTD		Last Year		Indicator
CRIME	Performance	Indicator	Performance	Indicator	Change & Detection	
Total Crime Recorded (per 1,000 population)	395	16.4	389	16.1	1.5%	
Detection (% rate)	130	32.9%	151	38.8%	32.9%	
Burglary Dwelling (per 1,000 households)	7	0.7	8	0.8	-12.5%	
Detection (% rate)	3	42.9%	2	25.0%	42.9%	
Total Violent Crime (per 1,000 population)	88	3.6	116	4.8	-24.1%	
Detection (% rate)	61	69.3%	83	71.6%	69.3%	
Autocrime per (1,000 population)	37	1.5	29	1.2	27.6%	
Detection (% rate)	3	8.1%	3	10.3%	8.1%	

Target Contribution Summary - Powys

DYFED-POWYS POLICE

GREEN/RED indicates current performance **consistent** or **not consistent** with force target reduction & detection rate

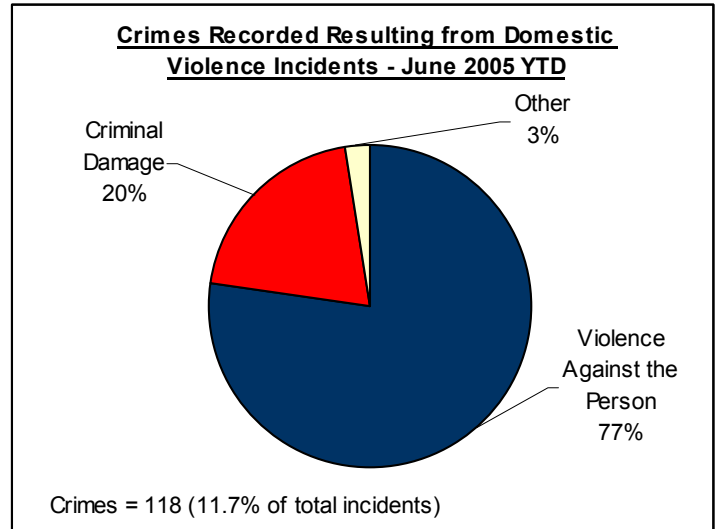
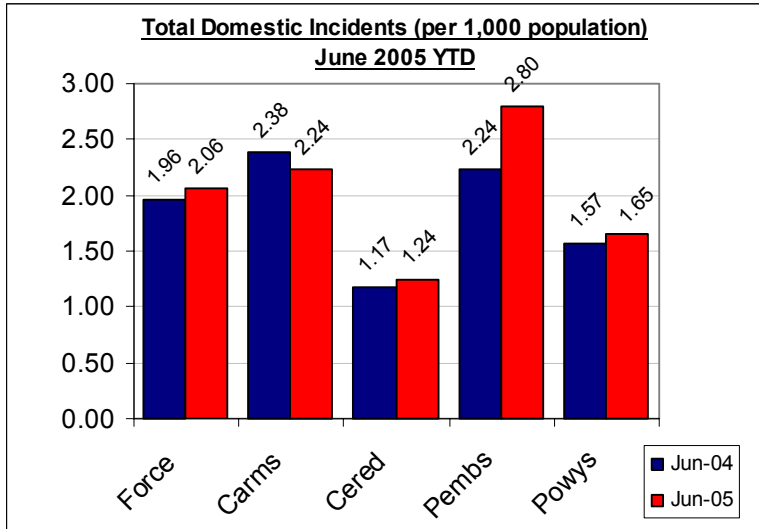
POWYS		April-June YTD		Last Year		Indicator
CRIME	Performance	Indicator	Performance	Indicator	Change & Detection	
Total Crime Recorded (per 1,000 population)	1993	15.8	1834	14.5	8.7%	
Detection (% rate)	766	38.4%	710	38.7%	38.4%	
Burglary Dwelling (per 1,000 households)	55	1.0	58	1.1	-5.2%	
Detection (% rate)	14	25.5%	15	25.9%	25.5%	
Total Violent Crime (per 1,000 population)	615	4.9	491	3.9	25.3%	
Detection (% rate)	343	55.8%	295	60.1%	55.8%	
Autocrime per (1,000 population)	112	0.9	121	1.0	-7.4%	
Detection (% rate)	13	11.6%	10	8.3%	11.6%	
Brecon		April-June YTD		Last Year		Indicator
CRIME	Performance	Indicator	Performance	Indicator	Change & Detection	
Total Crime Recorded (per 1,000 population)	484	18.9	385	15.0	25.7%	
Detection (% rate)	160	33.1%	161	41.8%	33.1%	
Burglary Dwelling (per 1,000 households)	5	0.5	8	0.7	-37.5%	
Detection (% rate)	0	0.0%	3	37.5%	0.0%	
Total Violent Crime (per 1,000 population)	137	5.4	111	4.3	23.4%	
Detection (% rate)	79	57.7%	80	72.1%	57.7%	
Autocrime per (1,000 population)	39	1.5	25	1.0	56.0%	
Detection (% rate)	1	2.6%	2	8.0%	2.6%	
Llandrindod Wells		April-June YTD		Last Year		Indicator
CRIME	Performance	Indicator	Performance	Indicator	Change & Detection	
Total Crime Recorded (per 1,000 population)	331	11.7	350	12.4	-5.4%	
Detection (% rate)	151	45.6%	161	46.0%	45.6%	
Burglary Dwelling (per 1,000 households)	16	1.3	15	1.2	6.7%	
Detection (% rate)	8	50.0%	3	20.0%	50.0%	
Total Violent Crime (per 1,000 population)	93	3.3	104	3.7	-10.6%	
Detection (% rate)	64	68.8%	67	64.4%	68.8%	
Autocrime per (1,000 population)	14	0.5	22	0.8	-36.4%	
Detection (% rate)	3	21.4%	4	18.2%	21.4%	
Newtown		April-June YTD		Last Year		Indicator
CRIME	Performance	Indicator	Performance	Indicator	Change & Detection	
Total Crime Recorded (per 1,000 population)	642	18.3	491	14.0	30.8%	
Detection (% rate)	232	36.1%	151	30.8%	36.1%	
Burglary Dwelling (per 1,000 households)	23	1.5	23	1.5	0.0%	
Detection (% rate)	3	13.0%	4	17.4%	13.0%	
Total Violent Crime (per 1,000 population)	215	6.1	126	3.6	70.6%	
Detection (% rate)	100	46.5%	62	49.2%	46.5%	
Autocrime per (1,000 population)	29	0.8	26	0.7	11.5%	
Detection (% rate)	3	10.3%	3	11.5%	10.3%	
Welshpool		April-June YTD		Last Year		Indicator
CRIME	Performance	Indicator	Performance	Indicator	Change & Detection	
Total Crime Recorded (per 1,000 population)	367	14.4	391	15.3	-6.1%	
Detection (% rate)	143	39.0%	144	36.8%	39.0%	
Burglary Dwelling (per 1,000 households)	10	0.9	9	0.8	11.1%	
Detection (% rate)	3	30.0%	1	11.1%	30.0%	
Total Violent Crime (per 1,000 population)	116	4.5	101	4.0	14.9%	
Detection (% rate)	70	60.3%	48	47.5%	60.3%	
Autocrime per (1,000 population)	19	0.7	22	0.9	-13.6%	
Detection (% rate)	4	21.1%	1	4.5%	21.1%	
Ystradgynlais		April-June YTD		Last Year		Indicator
CRIME	Performance	Indicator	Performance	Indicator	Change & Detection	
Total Crime Recorded (per 1,000 population)	169	14.2	217	18.3	-22.1%	
Detection (% rate)	80	47.3%	90	41.5%	47.3%	
Burglary Dwelling (per 1,000 households)	1	0.2	3	0.6	-66.7%	
Detection (% rate)	0	0.0%	4	133.3%	0.0%	
Total Violent Crime (per 1,000 population)	54	4.5	49	4.1	10.2%	
Detection (% rate)	30	55.6%	38	77.6%	55.6%	
Autocrime per (1,000 population)	11	0.9	26	2.2	-57.7%	
Detection (% rate)	2	18.2%	0	0.0%	18.2%	

Domestic Incidents

DYFED POWYS POLICE

SPI 9A TARGET - 80% OF INCIDENTS (WITH A POWER OF ARREST) LEADING TO ARREST
LOCAL TARGET – 30% OF TOTAL INCIDENTS INVOLVING REPEAT VICTIMS

Please note figures provided here are provisional only. For the latest detailed information please contact your local Public Protection Unit (PPU) for further details.



Section & Divisional Summary – June 2005 YTD

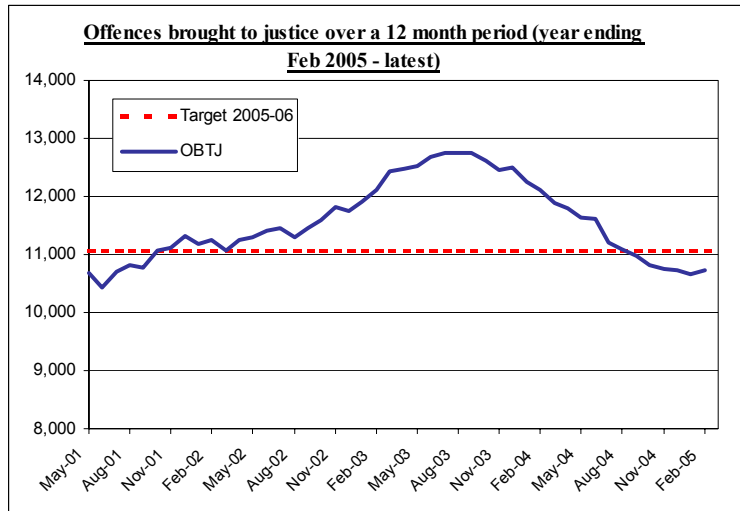
Section	Incidents		Arrests		Sanction Detections			Repeat Victims		Apr-June 2004 (SPLY)	
	Total Incidents	Power Of Arrest	Arrests where POA	% POA	Crimes	Sanction Detections	% Sanction Detection	Total Repeat Victim Incidents	% Repeats	Total Incidents	Annual % Change
Ammanford (AA)	35	14	11	78.6%	4	3	75.0%	7	20.0%	80	-56.3%
Carmarthen (AC)	78	40	31	77.5%	11	9	81.8%	24	30.8%	79	-1.3%
Llanelli (AL)	221	93	69	74.2%	28	6	21.4%	62	28.1%	189	16.9%
Towy Gwendraeth (AT)	53	21	13	61.9%	9	7	77.8%	15	28.3%	64	-17.2%
Carmarthenshire	387	168	124	73.8%	52	25	48.1%	108	27.9%	412	-6.1%
Aberystwyth (BA)	56	30	26	86.7%	6	3	50.0%	8	14.3%	46	21.7%
Aberaeron (BB)	6	5	3	60.0%	2	1	50.0%	1	16.7%	14	-57.1%
Cardigan (BC)	20	10	6	60.0%	6	1	16.7%	5	25.0%	24	-16.7%
Lampeter (BL)	11	4	3	75.0%	1	0	0.0%	1	9.1%	4	175.0%
Ceredigion	93	49	38	77.6%	15	5	33.3%	15	16.1%	88	5.7%
Fishguard (CF)	49	19	15	78.9%	4	2	50.0%	21	42.9%	29	69.0%
Haverfordwest (CH)	65	26	19	73.1%	4	1	25.0%	25	38.5%	63	3.2%
Milford Haven (CM)	74	30	20	66.7%	6	4	66.7%	30	40.5%	73	1.4%
Pembroke Dock (CP)	88	39	30	76.9%	7	4	57.1%	36	40.9%	68	29.4%
Tenby (CT)	43	17	13	76.5%	6	3	50.0%	13	30.2%	23	87.0%
Pembrokeshire	319	131	97	74.0%	27	14	51.9%	80	25.1%	256	24.6%
Brecon (DB)	40	15	15	100.0%	2	1	50.0%	11	27.5%	47	-14.9%
Llandrindod Wells (DL)	31	6	5	83.3%	6	2	33.3%	7	22.6%	35	-11.4%
Newtown (DN)	67	29	26	89.7%	5	2	40.0%	24	35.8%	53	26.4%
Welshpool (DW)	37	11	11	100.0%	5	0	0.0%	15	40.5%	42	-11.9%
Ystradgynlais (DY)	34	15	14	93.3%	6	2	33.3%	16	47.1%	22	54.5%
Powys	209	76	71	93.4%	24	7	29.2%	73	34.9%	199	5.0%
Force	1008	424	330	77.8%	118	51	43.2%	321	31.8%	955	5.5%

Source: LCS Recorded Domestic Incident Details (extracted 11/7/05 & 13/7/2004-SPLY)

Narrowing the Justice Gap - OFFENCES BROUGHT TO JUSTICE & SANCTION DETECTIONS

TARGET 2005/06 : 11,068 total OB TJ (Offences Brought to Justice)

Total Offences Brought to Justice (OB TJ) - Force



Offences brought to justice – 12 monthly data	TIC	PND	Formal Warnings	Cautions	Convictions	OB TJ
Baseline: Apr 01 – Mar 02	420	-	-	3,698	6,900	11,068
Latest: Mar 04 – Feb 05	394	293	757	3,462	5,930	10,836
Change	-6.2%	-	-	-6.4%	-14.1%	-3.1%
2005/06 Force Target (0%- 11,068 OB TJ)	YES	n/a	YES	NO	NO	NO

Divisional Contribution Toward OB TJ Volumes – Approximate Latest

Please note this data is provided as a **guide only** - it is based on the assumption that the distribution of sanction detections throughout the force will ultimately be mirrored in the distribution of OB TJ recorded for that month (or latest available). It is provided here for information only

Approx OB TJ	Apr-05* (est)	Target**	Diff from Target
Carmarthenshire	358	331	8.1%
Ceredigion	138	145	-4.3%
Pembrokeshire	253	245	3.2%
Powys	190	201	-5.7%
Force	939	922	1.8%

* - Estimated OB TJ Based on latest monthly force level data (Feb 2005) and distribution of sanction detections in April 2005.

** - Target profile required to attain the end of year target of 11,068 OB TJ. Approximate divisional distribution is based on 2004/05 contribution toward total force sanction detections).

Sanction Detection Volume Performance YTD – Current Clear-Up Breakdown (Annual % Change)

The current volume of sanction detections (June 05 YTD) is up 19% on the same period last year (up 455 from 2414).

Area – June YTD	Charged/ Summons	Cautioned	TIC	PND	F. Warning for Cannabis*	Total Sanction Dets
Carmarthenshire	524 (+3%)	315 (+8%)	33 (-13%)	71 (n/a)	133 (+80%)	1076 (+18%)
Ceredigion	209 (+1%)	154 (+16%)	10 (-23%)	9 (n/a)	42 (-7%)	424 (+7%)
Pembrokeshire	299 (-5%)	286 (+16%)	89 (10 sply)	46 (n/a)	25 (-44%)	745 (+21%)
Powys	345 (+18%)	203 (+13%)	28 (3 sply)	31 (n/a)	17 (+89%)	624 (+29%)
Force	1377 (+4%)	958 (+13%)	160 (+150%)	157 (n/a)	217 (+25%)	2869 (+19%)

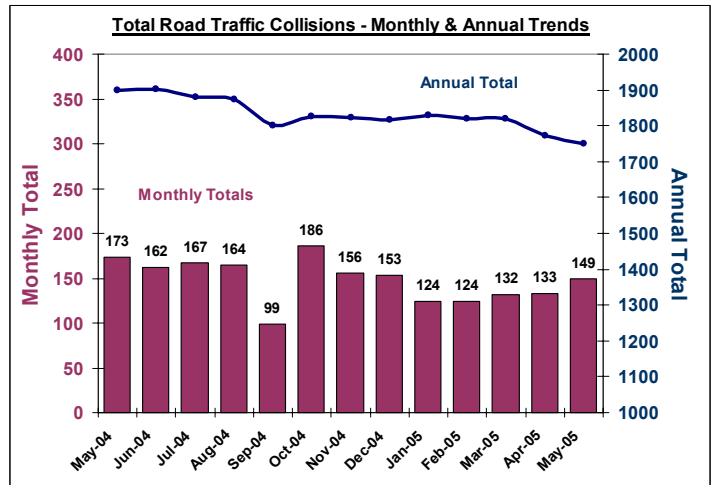
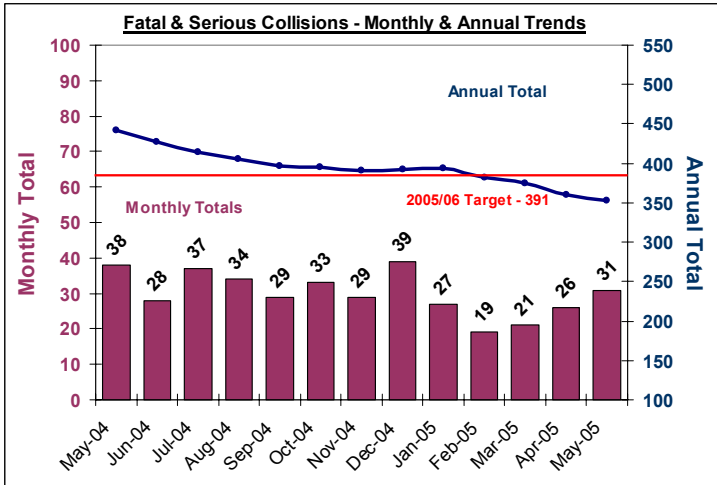
* - SPLY Data Approximate

Road Traffic Collisions

May Monthly Data Latest available

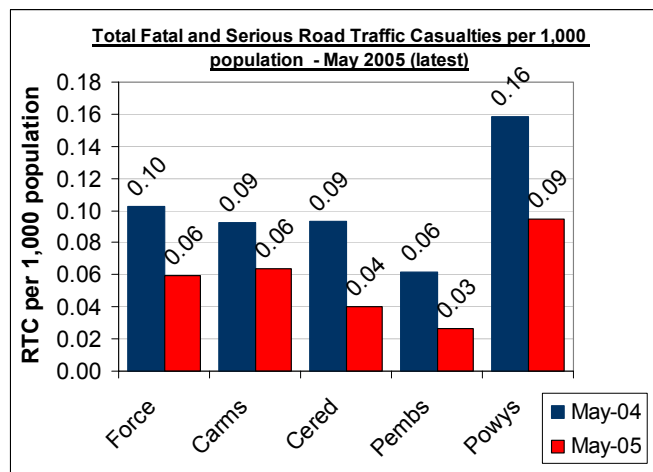
TARGET 2005/06 : 391 FATAL AND SERIOUS COLLISIONS (0.8 PER 1,000 POPULATION)

Road Traffic Collisions – Monthly & Annual Trends (May - latest data)



Performance YTD (May 2005 YTD - latest)	FORCE	Carms	Cered	Pembs	Powys
Fatal Road Collisions YTD	4	2	0	1	1
Serious & Fatal Road Collisions YTD	57	22	7	7	21
Indicator - Per 1,000 population	0.12	0.13	0.09	0.06	0.17
On-Target (0.13 pro-rata)	YES	YES	YES	YES	NO
Fatal (SPLY)	12	7	1	1	3
Serious & Fatal (SPLY)	83	32	11	13	27

Road Traffic Casualties – 2010 Target Progress



	May 2005 YTD	Force	Carms	Cered	Pembs	Powys
Number of people killed or seriously injured casualties	65	27	7	7	24	
At 2010 Target Level*	YES	YES	YES	YES	YES	
Number of Children (<=15 yrs) killed or seriously injured	4	3	1	0	0	
At 2010 Target Level*	YES	YES	YES	YES	YES	
Number of persons with slight injuries	340	130	67	65	78	
At 2010 Target Level*	NO	NO	NO	YES	YES	

* 2010 Targets Established with Roads Policing Strategy, Operations Dept & National Road Policing Targets. Progress towards Pro-Rata year-end 2010 target illustrated here

Source: MAAP RTC Database 11/7/05

PPAF Statutory Performance Indicator Summary

Reported Quarterly

* - HOME OFFICE POLICE PERFORMANCE ASSESSMENT FRAMEWORK MEASURES

This Data is Updated Quarterly – Latest: 2004/05 End of Year Data

SPI Number	Indicator Description	2004/05 Performance	2004/05 End of Year Target	2005-06 DPP Target
1a	Satisfaction of victims of domestic burglary, violent crime, vehicle crime and road traffic collisions with respect to - a) making contact with the Police	91.9%	NEW	92%
1b	b) action taken by the Police	83.6%	NEW	83%
1c	c) Being kept informed of progress	70.1%	NEW	70%
1d	d) Their treatment by staff	91.8%	NEW	92%
1e	e) the overall service provided	84.9%	NEW	85%
2a	Using the BCS, the % of people who think their local police do a good job	NEW	NEW	NEW
3a	Satisfaction of victims of racist incidents with respect to the overall service provided	79.2%	NEW	85%
3b	From SPI 1(e), comparison of satisfaction for white users and users from visible minority ethnic groups with respect to the overall service provided.	White - 84.5% Ethnic - 71.7%	NEW	White - 85% Ethnic - 72%
3c(i)	(i) % of PACE stop/searches which lead to arrest by ethnicity	White - 17.0% Ethnic - 27.2%	White - 20% Ethnic - 20%	White - 20% Ethnic - 20%
3c(ii)	(ii) % of other (non-PAE) stop/searches which lead to arrest by ethnicity	NEW	NEW	NEW
3d	Comparison of percentage detected of violence against the person offences by ethnicity of the victim (sanction detections)	White - 31.2% Ethnic - 31.5%	NEW	White - 31% Ethnic - 31%
3e	Proportion of police recruits (ethnic) compared to the proportion of people from minority ethnic groups in the economically active population.	0% (No ethnic recruits)	NEW	NEW
3f	Ratio of officers from minority ethnic groups residing to all officer resignations	NEW	NEW	NEW
3g	% of female police officers compared to overall Force strength.	19.7%	NEW	19%
4a	Using the British Crime Survey (a) the risk of personal crime; and	8%	4%	8%
4b	(b) the risk of household crime.	11%	10%	11%
5a	(a) Domestic Burglaries per 1,000 households.	5.06 (1042 crimes)	4.7 (960 crimes)	5.06 (1042 crimes)
5b	(b) Violent crime per 1,000 population.	18.14 (8859 crimes)	16.7 (8145 crimes)	17.60 (8593 crimes)
5c	(c) Robberies per 1,000 population.	0.08 (41 crimes)	0.08 (40 crimes)	0.1 (48 crimes)
5d	(d) Vehicle crime per 1,000 population.	4.77 (2331 crimes)	4.4 (2136 crimes)	4.77 (2331 crimes)
5e	(e) Life threatening crime and gun crime per 1,000 population.	0.28 (139 crimes)	NEW	0.28
6a	Number of notifiable/recorded offences resulting in convictions, caution or taken into consideration at court	10,730	12872	11,068
6b	% of notifiable/recorded offences resulting in convictions, caution or taken into consideration at court	33.2%	NEW	NEW
7a	% of notifiable/recorded offences resulting in charge, summons, caution or taken into consideration at court ('sanction detections')	32.5%	43%	31%
8a	Percentage of domestic violence incidents with a power of arrest where an arrest was made relating to the incident.	81.5%	80.0%	80%
9a(i)	I) Number of people killed in under 30 days or seriously injured in road traffic collisions	397 fatal or serious collisions	415 fatal or serious collisions	391 fatal or serious collisions
9a(ii)	(ii) Number of persons killed or seriously injured in road traffic collisions per 100million vehicle kilometres travelled.	8.26	8.63	8.13
10a	Using the British Crime Survey a) fear of crime	9%	10%	10%
10b	Perceptions of anti-social behaviour; and	NEW	NEW	NEW
10c	Perceptions of local drug use / drug dealing	NEW	NEW	NEW
11a	Percentage of police officer time spent on frontline duties	tbc	NEW	68.5%
12a	Delivery of cashable and non-cashable efficiency targets	NEW	NEW	NEW
13a	Average number of working hours lost due to sickness per police officer.	92.8 hours	NEW	92.8 hours
13b	Average number of working hours lost due to sickness by police staff.	80.7 hours	NEW	80.7 hours