



Heddlu Dyfed-Powys Police

CRIME TRENDS UPDATE July 2005

Contents:

Headline Statistics	2
Most Frequent Recorded Offences Profile	3
Recorded Crimes and Detection Rates	4
Domestic Burglaries and Detection Rates	5
Other Burglary and Detection Rates	6
Violent Crime and Detection Rates	7
Vehicle Crime and Detection Rates	8
Criminal Damage and Detection Rates	9
Drugs Statistics and Detection Rates	10
Section Level Sanction Detection Summary	11
Divisional Contribution to Targets	12
Domestic Incidents	16
Narrowing the Justice Gap	17
Road Traffic Collisions	18
PPAF Statutory Performance Indicator Summary	19

Heddlu Dyfed Powys Police: Corporate Services

Headline Statistics

DYFED-POWYS POLICE

APRIL - JULY 2005

Recorded Crime:

- Total Recorded Crime is down by 3% (-357 crimes) compared to the same period last year (SPLY) to stand at 11245 crimes. The monthly figure for July 2005 stands at 2,802 – a fall of 6% (-190 offences) on the same month in 2004, and 1% (-34 offences) down on the preceding month June 2005.
- Recorded detection performance has a total detection rate for the force at 41% (4623 total detections) compared with 39% the previous year. The volume of total detections has increased by 2% (+91 detections). The sanction detection rate stands at 35% (compared with 29% last year) with the volume increasing by 510 or 15%. This is consistent with the target of 31%.

Domestic Burglary:

- Total Domestic Burglary is down by 19% (-67 crimes) compared to the same period last year (SPLY) to stand at 293 crimes. The monthly figure for July 2005 stands at 85 – a fall of 11% (-11 offences) on the same month in 2004, but a 12% (+6 offences) increase on the preceding month June 2005.
- Recorded detection performance has improved, with the total detection rate for the force at 24% (70 detections) compared with 26% the previous year. The volume of total detections has decreased by 34% (-24) as a consequence of falling offences. The sanction detection rate stands at 23% (unchanged from last year) with the volume of sanction detections falling by 20% (-17).

Violent Crimes:

- Total Violent crime is down by 4% (-142 crimes) compared to the same period last year (SPLY) to stand at 3077 crimes. The monthly figure for July 2005 stands at 808 – an increase of 1% (+10 offences) on the same month in 2004, and a 5% (+42 offences) increase on the preceding month June 2005.
- Recorded detection performance has improved, with the total detection rate for the force at 59% (1882 detections) unchanged from the previous year. The volume of total detections has decreased by 3% (-63) as a consequence of falling offences. However, the sanction detection rate stands at 46% (compared with 38% last year) with the volume up by 15% (+184 sanction detections).

Vehicle Crime:

- Total Vehicle crime is down by 16% (-132 crimes) compared to the same period last year (SPLY) to stand at 684 crimes. The monthly figure for July 2005 stands at 176 – a fall of 15% (-30 offences) on the same month in 2004, but a 14% increase (+22 offences) on the preceding month June 2005.
- Recorded total detection stands at 15% (102 detections) down from 19% the previous year. The volume of total detections has decreased by 35% (-54) as a consequence of falling offences. The sanction detection rate stands at 13% (compared with 17% last year) with the volume down considerably (-50 sanction detections or 36%).

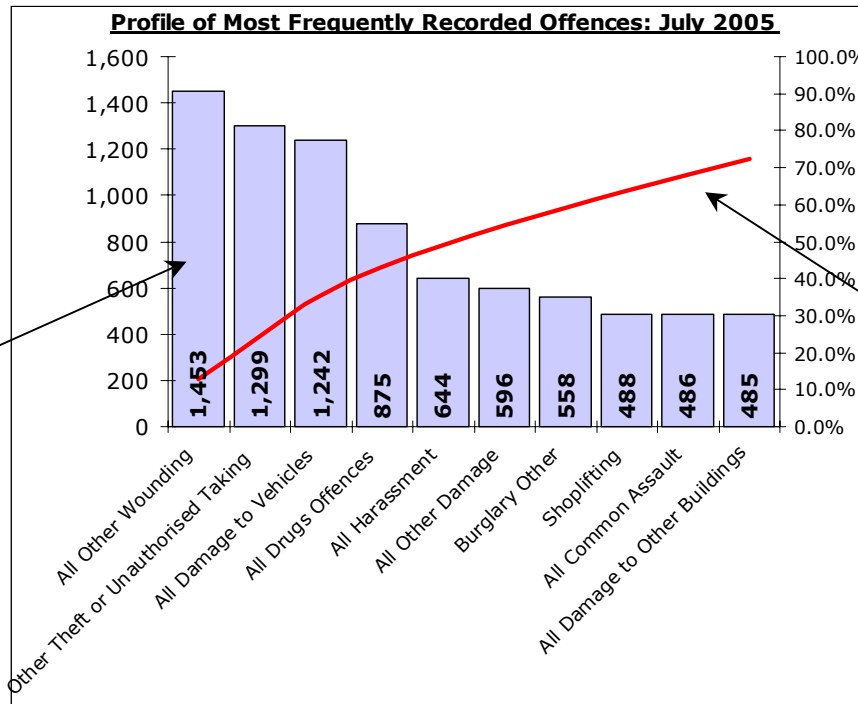
Criminal Damage:

- Total Criminal Damage is down by 4% (-100 crimes) compared to the same period last year (SPLY) to stand at 2756 (excl Arson & Threat to Commit CD). The monthly figure for July 2005 stands at 673 – a fall of 4% (-28 offences) on the same month in 2004, and unchanged from the previous month June 2005.
- Recorded detection performance has improved, with the total detection rate for the force at 25% (689 total detections) unchanged from the previous year. The volume of total detections has fallen by 3% (-21) as a consequence of falling levels of offences. The sanction detection rate stands at 20% (compared with 17% last year) with the volume down up by 13% (+63 sanction).

Most Frequent Recorded Offences Profile

DYFED-POWYS POLICE

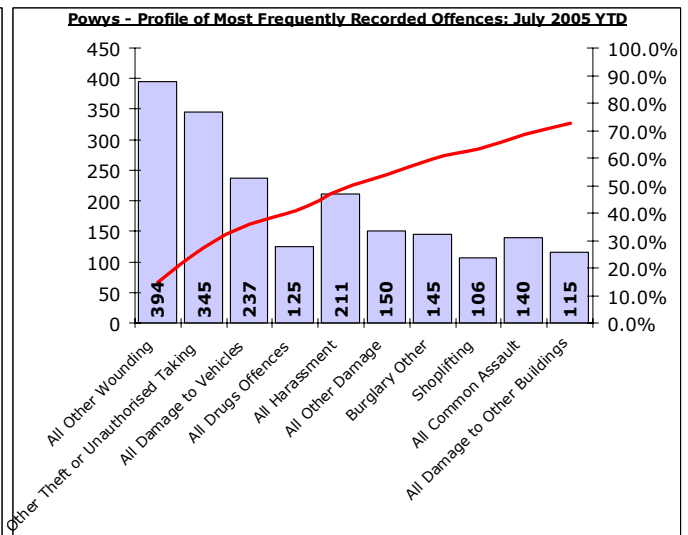
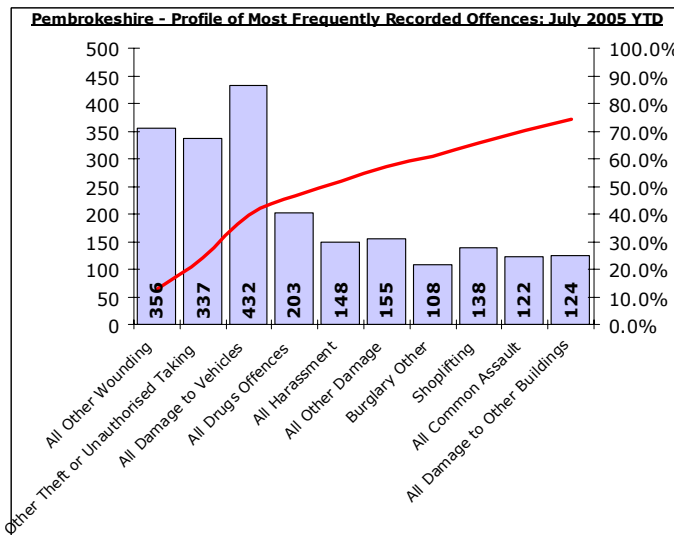
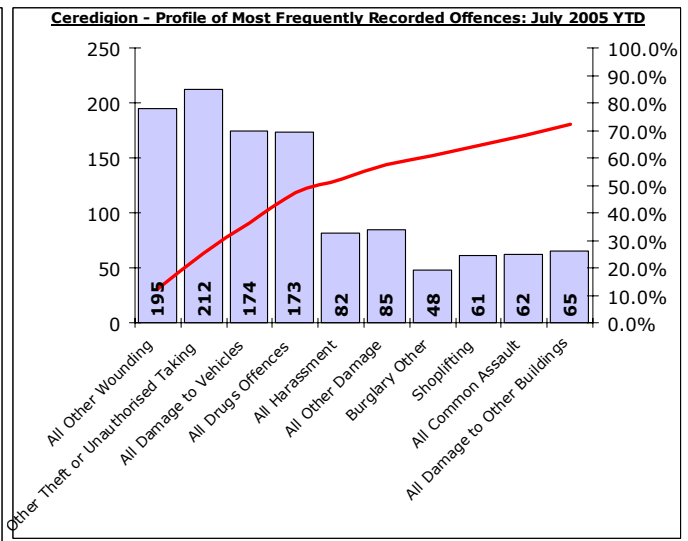
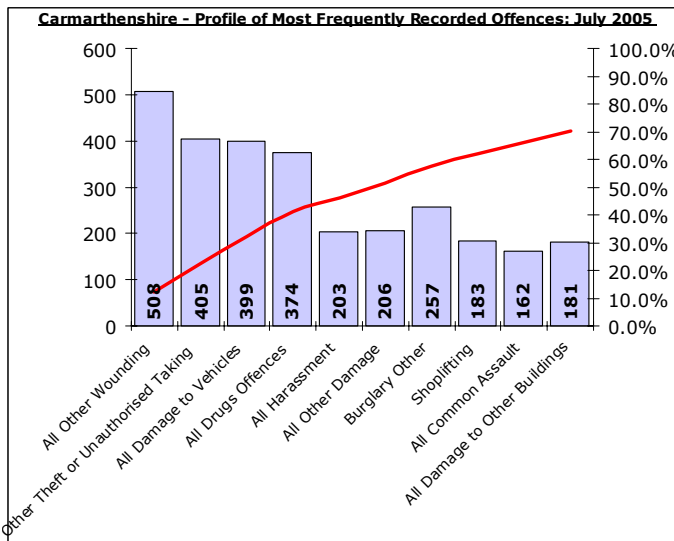
July 2005 YTD (Note : Divisonal profiles are in the same sequence as forces' most frequent categories – for comparison)



Recorded offences in each category in order of volume.

(Note these can include a number of sub-categories)

The cumulative contribution of these offence categories toward the total volume of offences recorded.

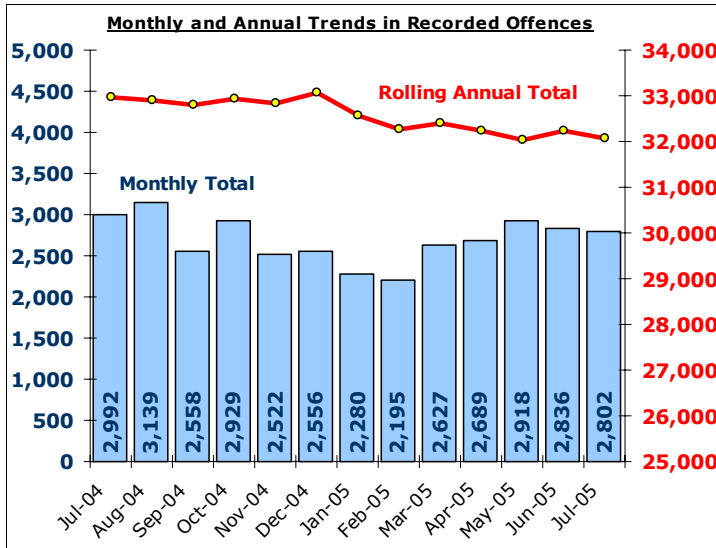


Total Recorded Crime

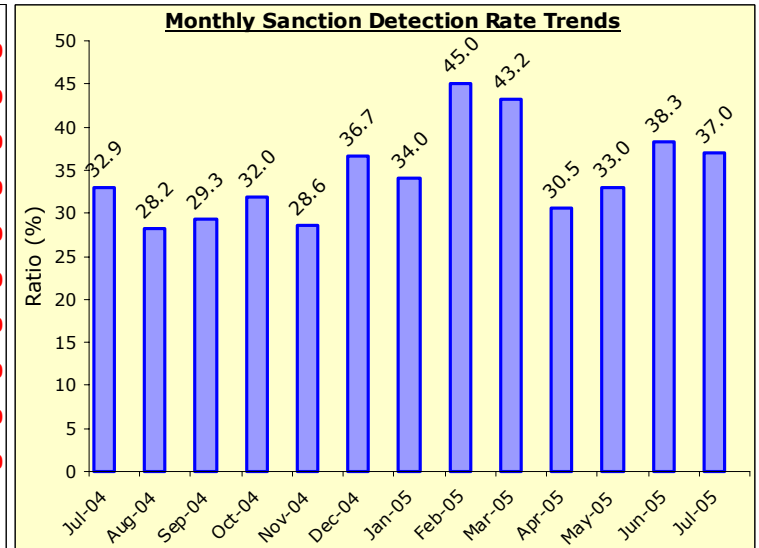
DYFED-POWYS POLICE

TARGET 2005/06 : NO TARGET

Recorded Crime Levels – July 2005

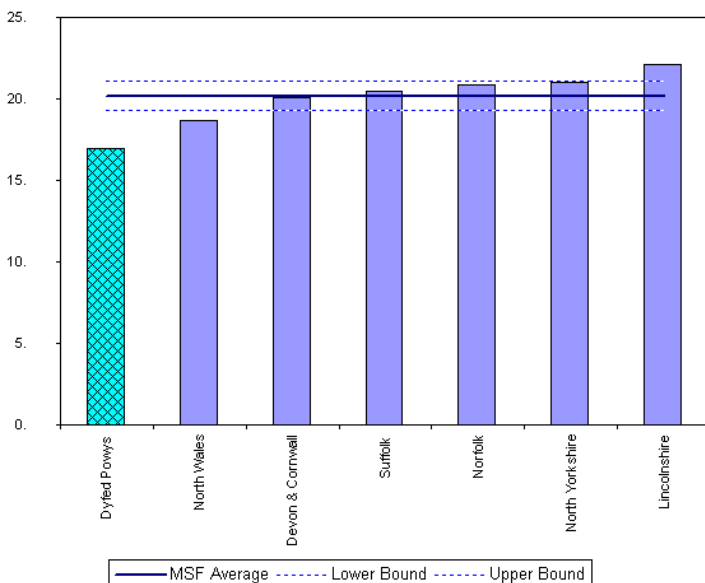


Monthly Sanction Detection Rates – July 2005

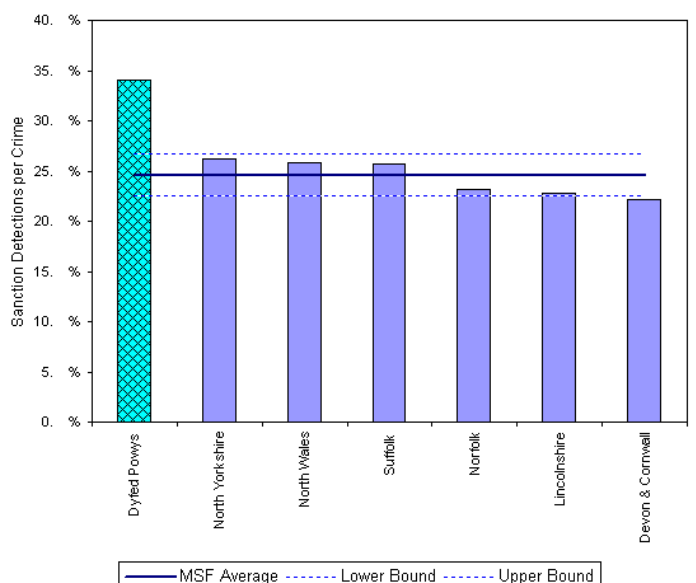


Total Recorded Crimes: July 2005 YTD	July 2005 YTD			Detection Rates YTD		Annual Trends - SPLY		
	Crimes	Sanction Dets	Total Dets	Sanction %	Total %	Crimes SPLY	Change	% Change
FORCE	11,245	3,907	4,623	34.7%	41.1%	11,602	- 357	- 3.1%
CARMS	4,088	1,395	1,657	34.1%	40.5%	4,660	- 572	- 12.3%
CERED	1,598	592	685	37.0%	42.9%	1,606	- 8	- 0.5%
PEMBS	2,855	991	1,208	34.7%	42.3%	2,842	+ 13	+ 0.5%
POWYS	2,704	929	1,073	34.4%	39.7%	2,494	+ 210	+ 8.4%

MSF – Crimes per 1000 Residents 01 Apr 2005 – 30 June 2005



MSF – Sanction detections (annual): 01 July 2004 – 30 June 2005



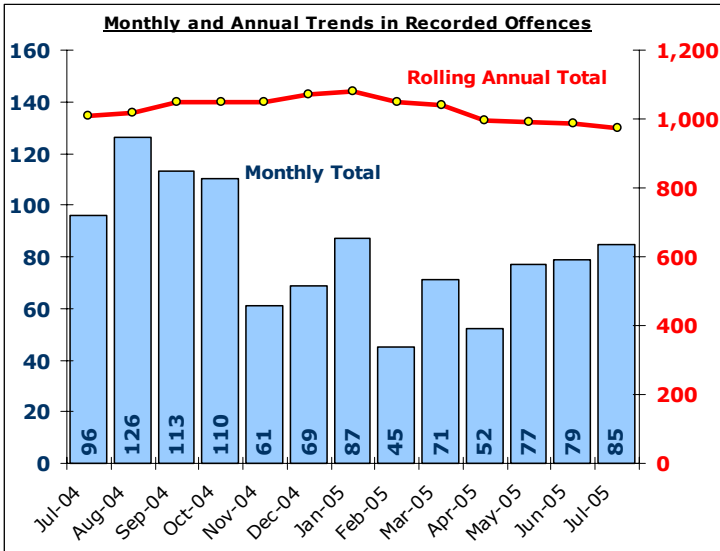
Brochur MSF - Sanction Detections per Crime-Dyfed Powys-All Crimes-01 Jul 2004 - 30 Jun 2005

Domestic Burglary

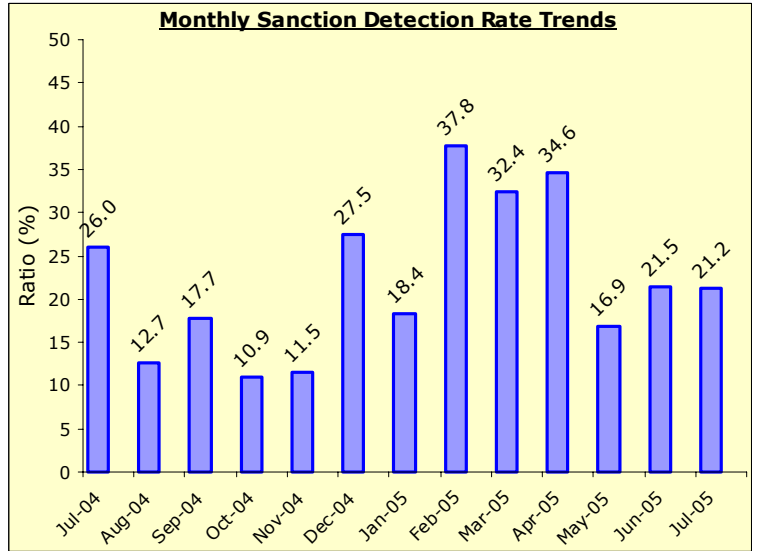
DYFED-POWYS POLICE

TARGET 2005/06 : 0% Increase in offences & 28% total detection rate

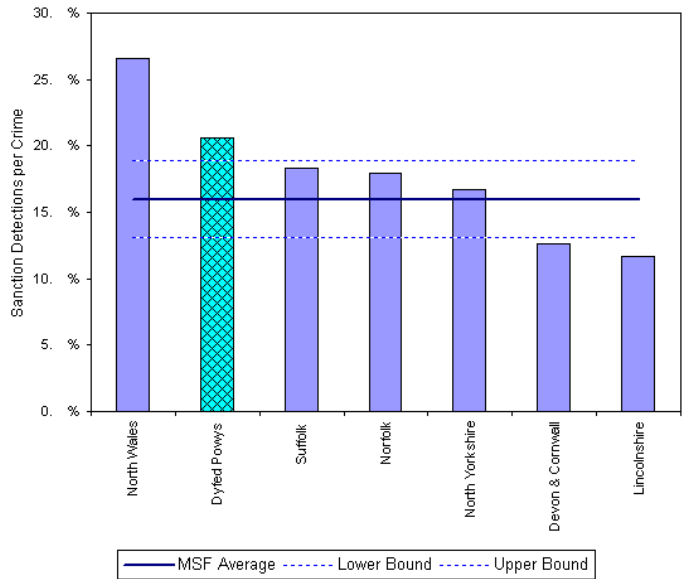
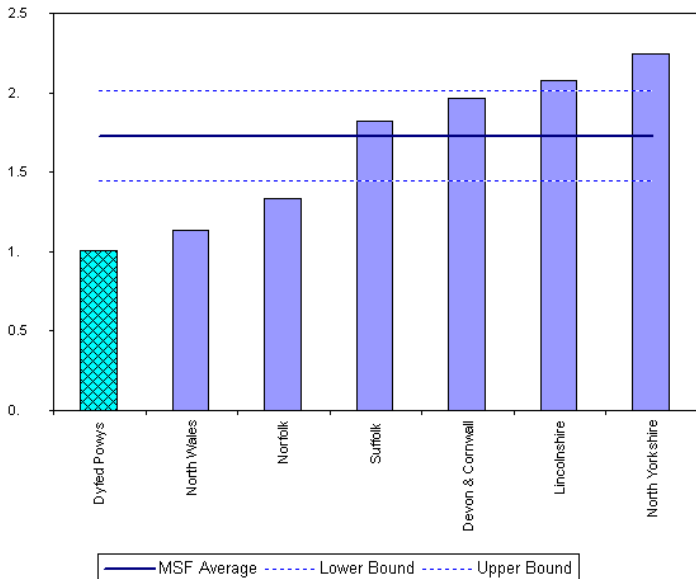
Recorded Crime Levels – July 2005



Monthly Sanction Detection Rates – July 2005



Total Domestic Burglary: July 2005 YTD	July 2005 YTD			Detection Rates YTD		Annual Trends - SPLY		
	Crimes	Sanction Dets	Total Dets	Sanction %	Total %	Crimes SPLY	Change	% Change
FORCE	293	66	70	22.5%	23.9%	360	- 67	- 18.6%
CARMS	118	18	18	15.3%	15.3%	165	- 47	- 28.5%
CERED	30	6	6	20.0%	20.0%	44	- 14	- 31.8%
PEMBS	74	20	24	27.0%	32.4%	80	- 6	- 7.5%
POWYS	71	22	22	31.0%	31.0%	71	=	=



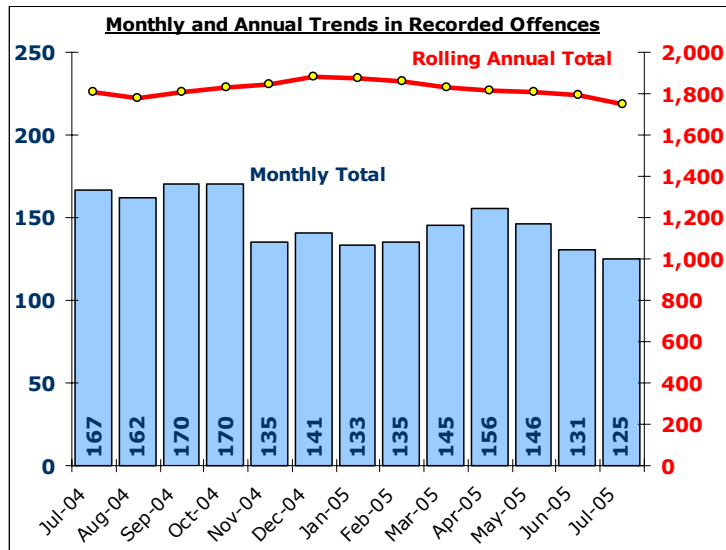
Bar chart MSF - Sanction Detection Rate per Crime-Dyfed Powys-Domestic Burglary-01 Jul 2004 - 30 Jun 2005

Other Burglary

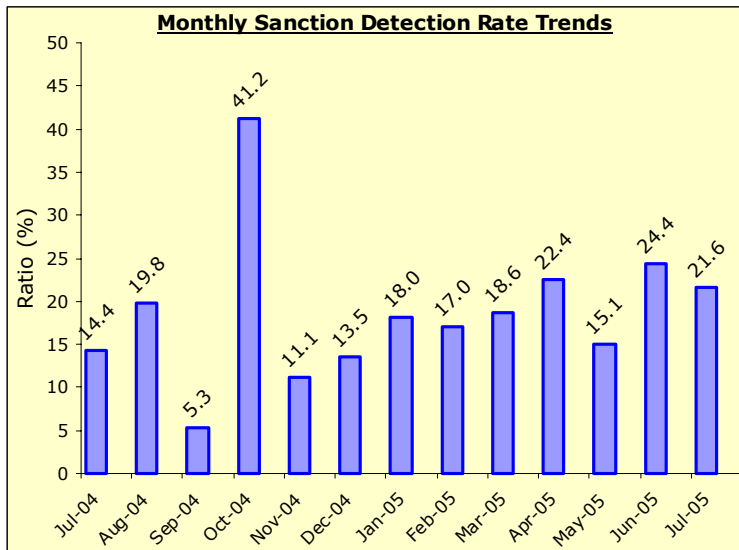
DYFED-POWYS POLICE

TARGET 2005/06 : No Target

Recorded Crime Levels – July 2005

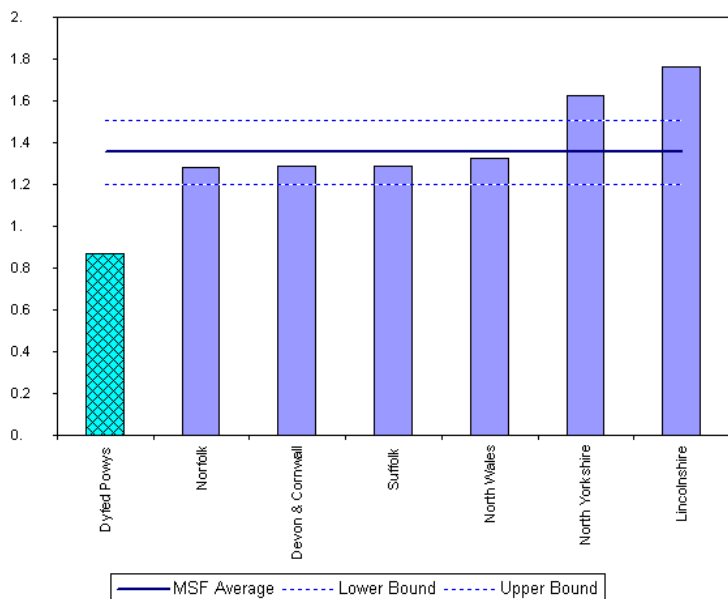


Monthly Sanction Detection Rates – July 2005

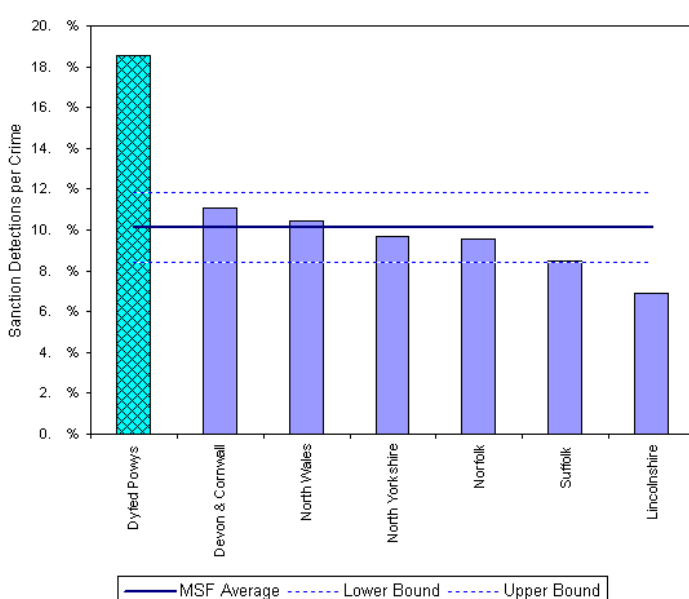


Total Other Burglary Crimes: July 2005 YTD	July 2005 YTD			Detection Rates YTD		Annual Trends - SPL Y		
	Crimes	Sanction Dets	Total Dets	Sanction %	Total %	Crimes SPL Y	Change	% Change
FORCE	558	116	120	20.8%	21.5%	642	- 84	- 13.1%
CARMS	257	53	55	20.6%	21.4%	325	- 68	- 20.9%
CERED	48	7	7	14.6%	14.6%	79	- 31	- 39.2%
PEMBS	108	25	26	23.1%	24.1%	107	+ 1	+ 0.9%
POWYS	145	31	32	21.4%	22.1%	131	+ 14	+ 10.7%

MSF – Crimes per 1000 Residents 01 Apr 2005 – 30 June 2005



MSF – Sanction detections (annual): 01 July 2004 – 30 June 2005



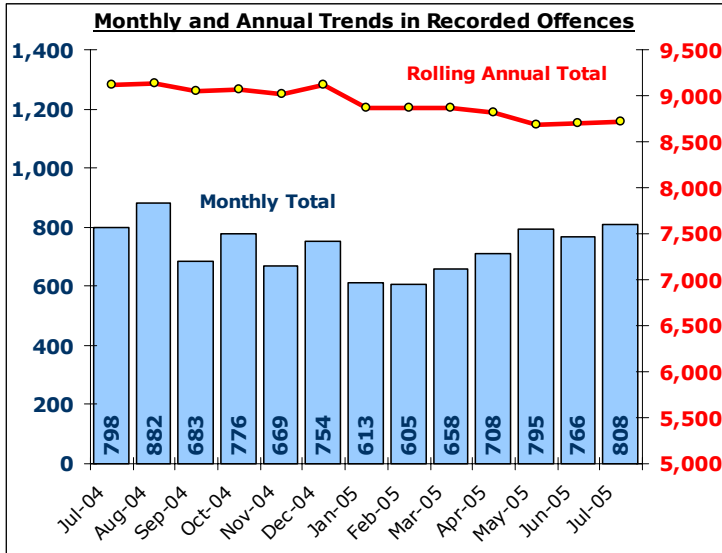
BarChart MSF - Sanction Detections per Crime-Dyfed Powys-Non Domestic Burglary-01 Jul 2004 - 30 Jun 2005

Total Violent Crime

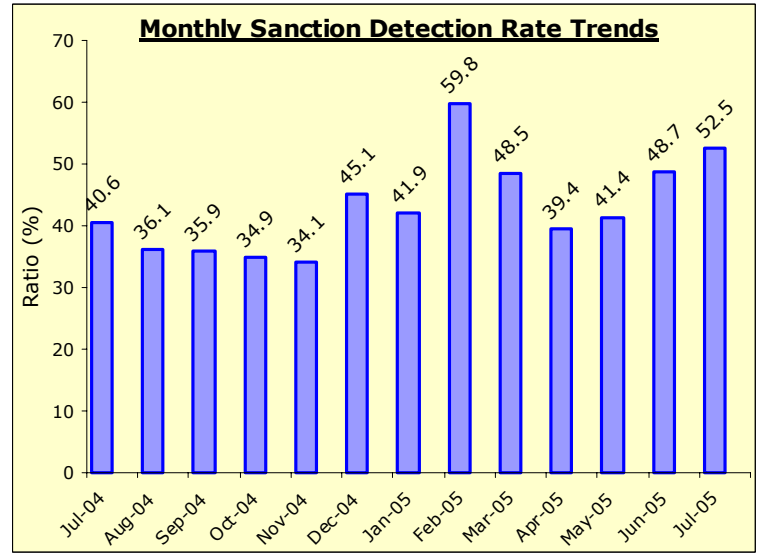
DYFED-POWYS POLICE

TARGET 2005/06 – 3% Reduction in offences & 60% total detection rate

Recorded Crime Levels – July 2005

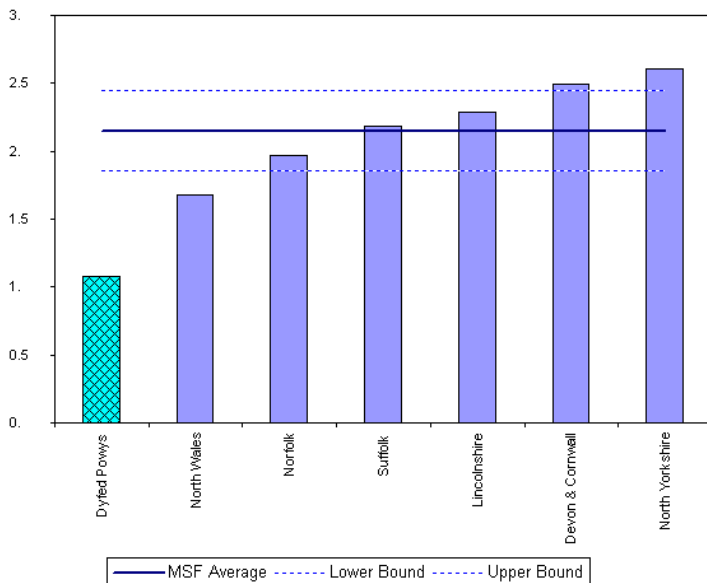


Monthly Sanction Detection Rates – July 2005

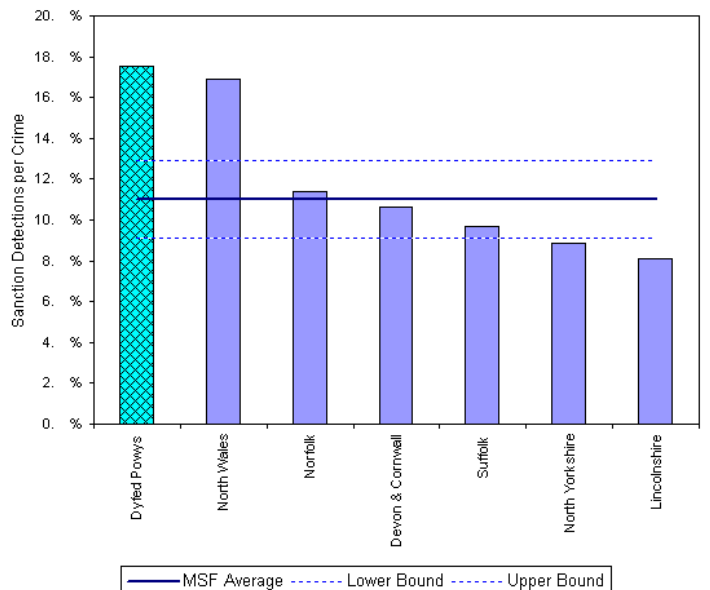


Total Violent Crimes: July 2005 YTD	July 2005 YTD			Detection Rates YTD		Annual Trends - SPLY		
	Crimes	Sanction Dets	Total Dets	Sanction %	Total %	Crimes SPLY	Change	% Change
FORCE	3,077	1,405	1,819	45.7%	59.1%	3,219	- 142	- 4.4%
CARMS	1,062	479	624	45.1%	58.8%	1,263	- 201	- 15.9%
CERED	423	195	252	46.1%	59.6%	457	- 34	- 7.4%
PEMBS	719	325	452	45.2%	62.9%	813	- 94	- 11.6%
POWYS	873	406	491	46.5%	56.2%	686	+ 187	+ 27.3%

MSF – Crimes per 1000 Residents 01 Apr 2005 – 30 June 2005



MSF – Sanction detections (annual): 01 July 2004 – 30 June 2005



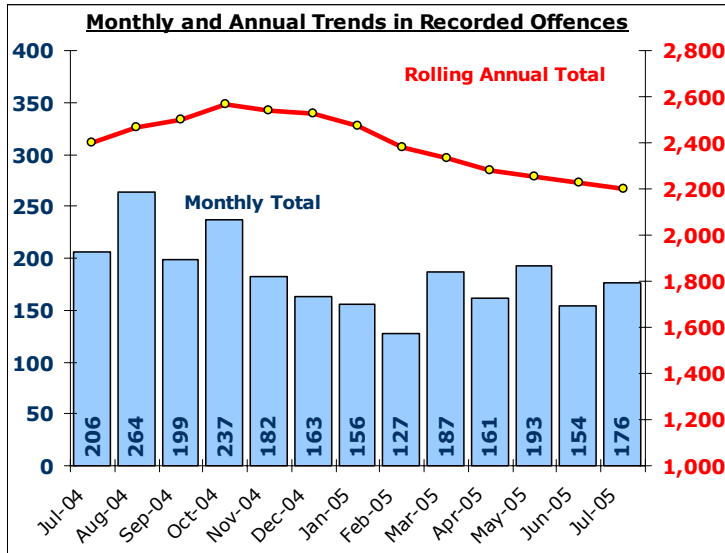
Bar chart MSF - Sanction Detections per Crime-Dyfed Powys-Valid Crime (Including Vehicle Interference)-01 Jul 2004 - 30 Jun 2005

Total Vehicle Crime

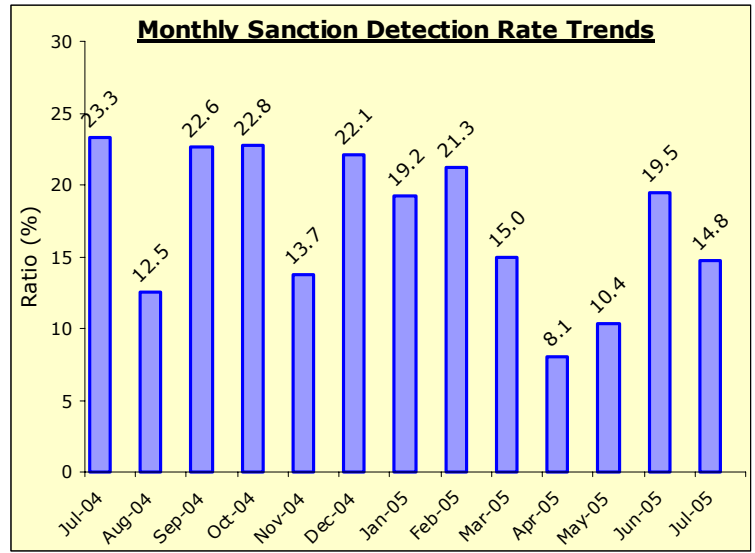
DYFED-POWYS POLICE

TARGET 2005/06 : 0% Increase in offences & 20% total detection rate

Recorded Crime Levels – July 2005

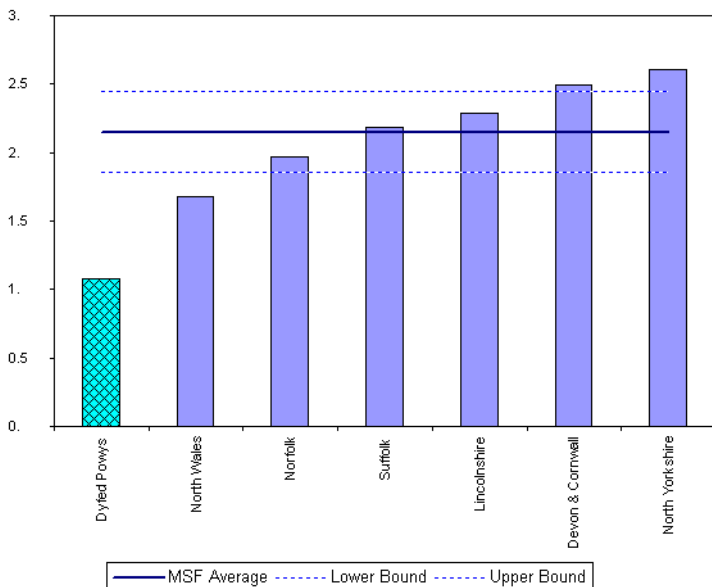


Monthly Sanction Detection Rates – July 2005

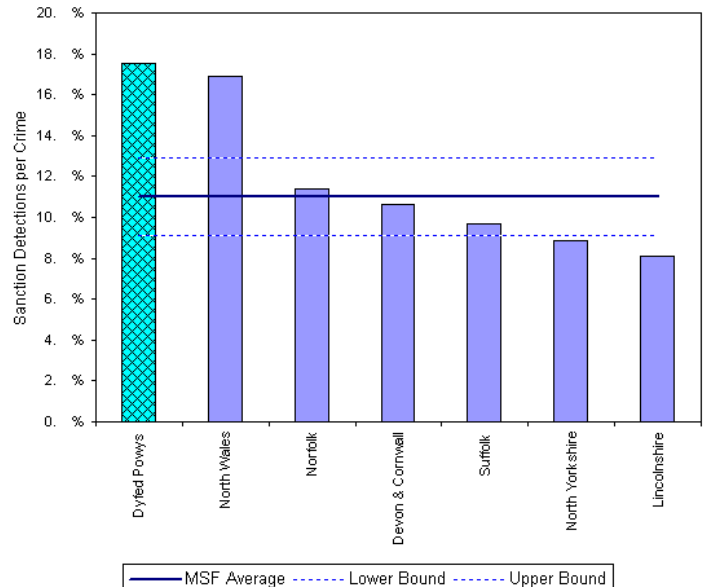


Total Vehicle Crimes: July 2005 YTD	July 2005 YTD			Detection Rates YTD		Annual Trends - SPLY		
	Crimes	Sanction Dets	Total Dets	Sanction %	Total %	Crimes SPLY	Change	% Change
FORCE	684	89	102	13.0%	14.9%	816	- 132	- 16.2%
CARMS	294	32	36	10.9%	12.2%	359	- 65	- 18.1%
CERED	74	16	17	21.6%	23.0%	82	- 8	- 9.8%
PEMBS	167	23	27	13.8%	16.2%	210	- 43	- 20.5%
POWYS	149	18	22	12.1%	14.8%	165	- 16	- 9.7%

MSF – Crimes per 1000 Residents 01 Apr 2005 – 30 June 2005



MSF – Sanction detections (annual): 01 July 2004 – 30 June 2005



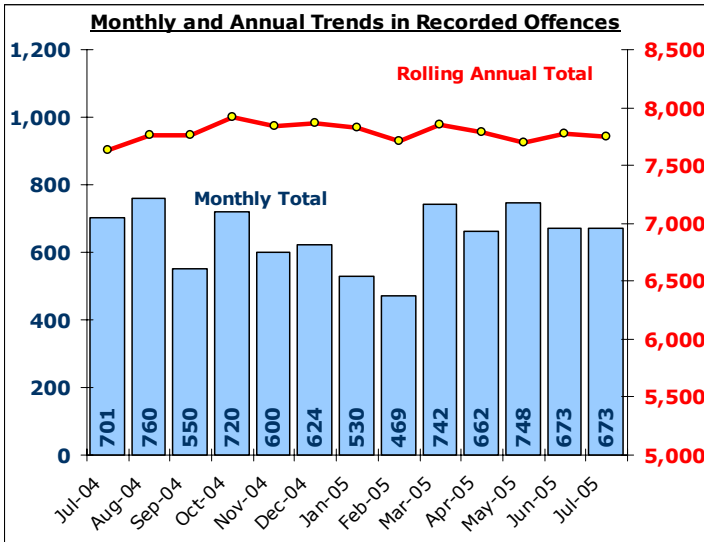
Bar chart MSF - Sanction Detections per Crime-Dyfed Powys-Valid Crime (including Valid Inferences)-01 Jul 2004 - 30 Jun 2005

Total Criminal Damage

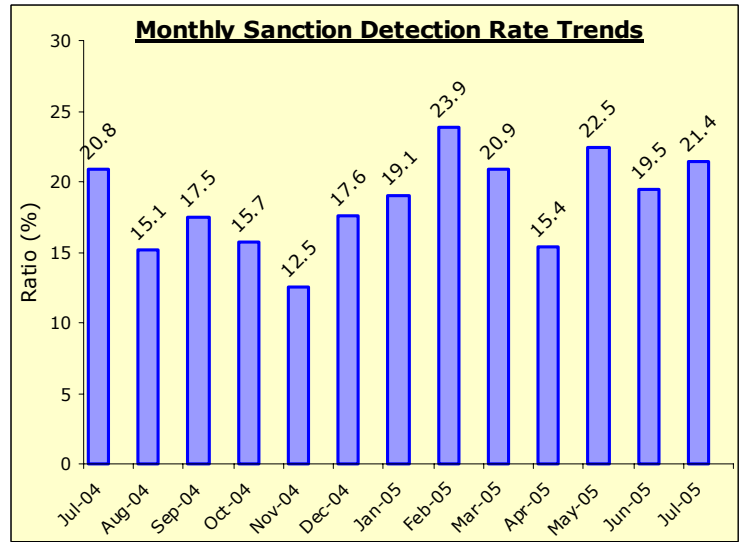
EXCLUDES ARSON % THREAT TO COMMIT CRIMINAL DAMAGE (HOC 56 & 59)

TARGET 2005/06 : NO TARGET

Recorded Crime Levels – July 2005

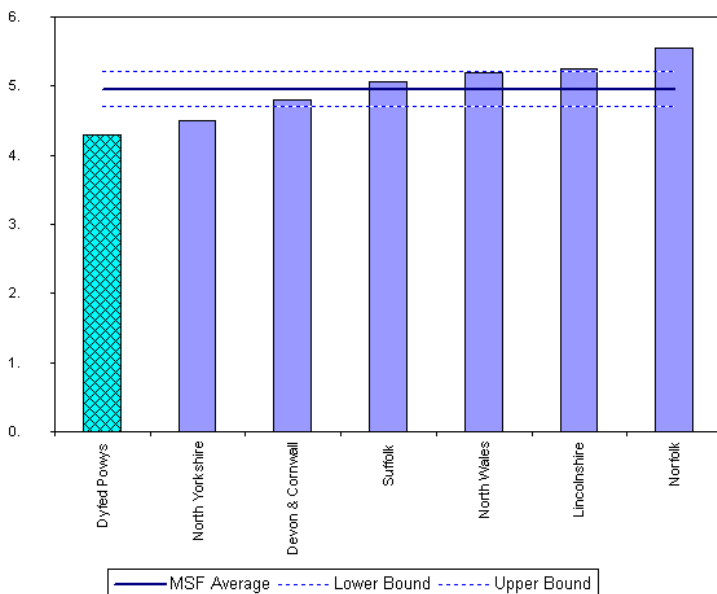


Monthly Sanction Detection Rates – July 2005

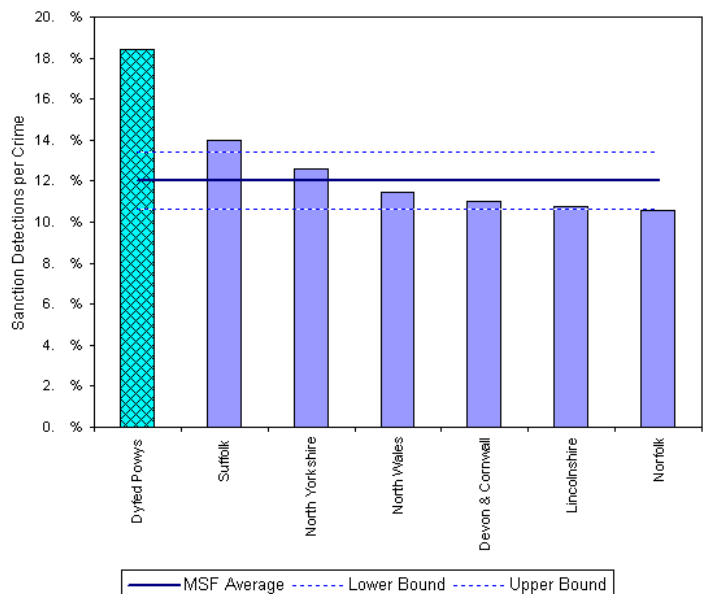


Total Criminal Damage: July 2005 YTD	July 2005 YTD			Detection Rates YTD		Annual Trends - SPLY		
	Crimes	Sanction Dets	Total Dets	Sanction %	Total %	Crimes SPLY	Change	% Change
FORCE	2,756	545	689	19.8%	25.0%	2,856	- 100	- 3.5%
CARMS	954	164	212	17.2%	22.2%	1,132	- 178	- 15.7%
CERED	384	64	76	16.7%	19.8%	337	+ 47	+ 13.9%
PEMBS	830	188	234	22.7%	28.2%	760	+ 70	+ 9.2%
POWYS	588	129	167	21.9%	28.4%	627	- 39	- 6.2%

MSF – Crimes per 1000 Residents 01 Apr 2005 – 30 June 2005



MSF – Sanction detections (annual): 01 July 2004 – 30 June 2005



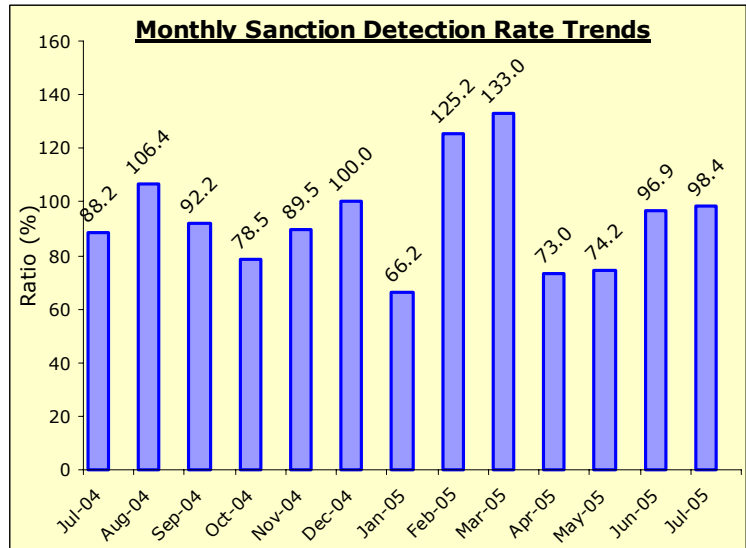
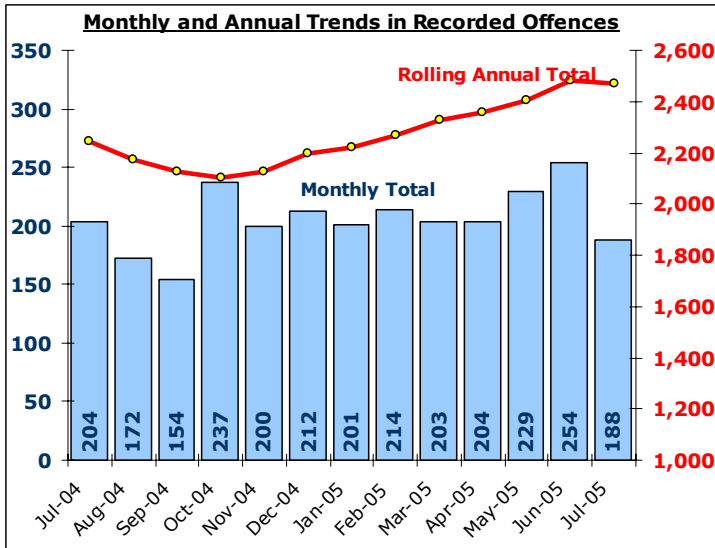
Total Drug Offences

DYFED-POWYS POLICE

TARGET 2005/06 : NO TARGET

Recorded Crime Levels – July 2005

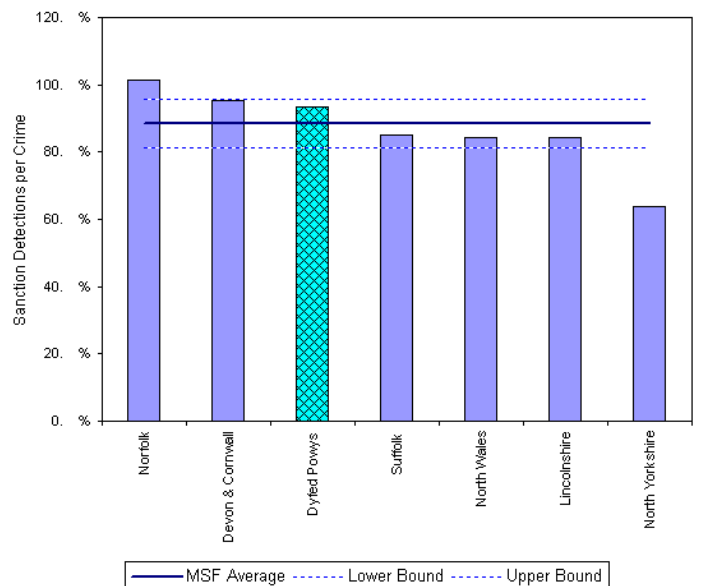
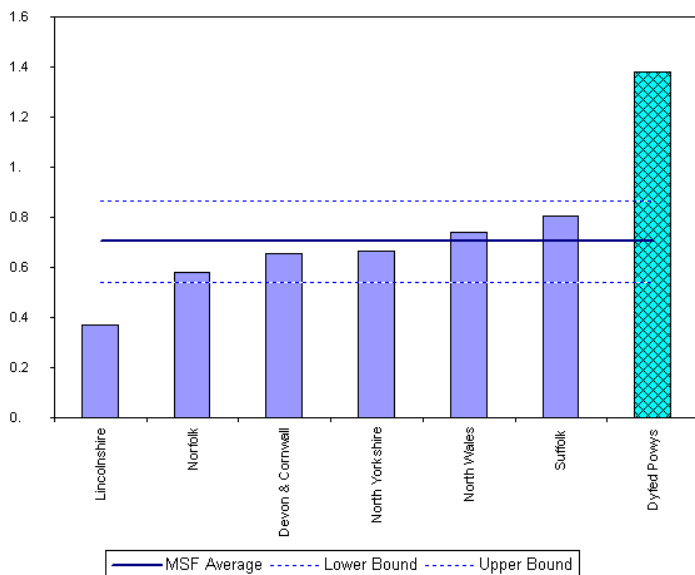
Monthly Sanction Detection Rates – July 2005



Total Drug Offences: July 2005 YTD	July 2005 YTD			Detection Rates YTD		Annual Trends - SPLY		
	Crimes	Sanction Dets	Total Dets	Sanction %	Total %	Crimes SPLY	Change	% Change
FORCE	875	750	809	85.7%	92.5%	734	+ 141	+ 19.2%
CARMS	374	317	355	84.8%	94.9%	261	+ 113	+ 43.3%
CERED	173	166	169	96.0%	97.7%	150	+ 23	+ 15.3%
PEMBS	203	168	181	82.8%	89.2%	190	+ 13	+ 6.8%
POWYS	125	99	104	79.2%	83.2%	133	- 8	- 6.0%

MSF – Crimes per 1000 Residents 01 Apr 2005 – 30 June 2005

MSF – Sanction detections (annual): 01 July 2004 – 30 July 2005



Bar chart MSF - Sanction Detections per Crime-Dyfed Powys-Drug Offences-01 Jul 2004 - 30 Jun 2005

Section Level Sanction Detection Summary

DYFED-POWYS POLICE

TARGET 2005/06 : 31% SANCTION DETECTION RATE

Sanction Detections Performance: Total Recorded Crimes

Sanction Detection Rate	Recorded	Detected	Det Ratio	Recorded	Diff	% Change
THE FORCE	11,245	3,907	34.7%	11,602	- 357	- 3.1%
Carmarthenshire	4,088	1,395	34.1%	4,660	- 572	- 12.3%
Ammanford (AA)	547	248	45.3%	566	- 19	- 3.4%
Carmarthen (AC)	962	380	39.5%	1,091	- 129	- 11.8%
Llanelli (AL)	2,024	589	29.1%	2,432	- 408	- 16.8%
Towy Gwendraeth (AT)	555	178	32.1%	571	- 16	- 2.8%
Ceredigion	1,598	592	37.0%	1,606	- 8	- 0.5%
Aberystwyth (BA)	834	336	40.3%	836	- 2	- 0.2%
Aberaeron (BB)	179	64	35.8%	198	- 19	- 9.6%
Cardigan (BC)	398	123	30.9%	383	+ 15	+ 3.9%
Lampeter (BL)	187	69	36.9%	189	- 2	- 1.1%
Pembrokeshire	2,855	991	34.7%	2,842	+ 13	+ 0.5%
Fishguard (CF)	309	101	32.7%	342	- 33	- 9.6%
Haverfordwest (CH)	656	209	31.9%	766	- 110	- 14.4%
Milford Haven (CM)	566	222	39.2%	602	- 36	- 6.0%
Pembroke Dock (CP)	777	291	37.5%	552	+ 225	+ 40.8%
Tenby (CT)	547	168	30.7%	580	- 33	- 5.7%
Powys	2,704	929	34.4%	2,494	+ 210	+ 8.4%
Brecon (DB)	644	192	29.8%	533	+ 111	+ 20.8%
Llandrindod Wells (DL)	501	200	39.9%	497	+ 4	+ 0.8%
Newtown (DN)	850	270	31.8%	679	+ 171	+ 25.2%
Welshpool (DW)	488	185	37.9%	529	- 41	- 7.8%
Ystradgynlais (DY)	221	82	37.1%	256	- 35	- 13.7%

Sanction Detection Performance: Domestic Burglary, Violent Crime & Vehicle Crime

Sanction Detections	Total Domestic Burglary			Total Violent Crime			Total Vehicle Crime		
	Recorded	Detected	Det Ratio	Recorded	Detected	Det Ratio	Recorded	Detected	Det Ratio
THE FORCE	293	66	22.5%	3,077	1,405	45.7%	684	89	13.0%
Carmarthenshire	118	18	15.3%	1,062	479	45.1%	294	32	10.9%
Ammanford (AA)	13	5	38.5%	104	47	45.2%	37	8	21.6%
Carmarthen (AC)	19	6	31.6%	273	148	54.2%	38	3	7.9%
Llanelli (AL)	65	4	6.2%	544	213	39.2%	182	18	9.9%
Towy Gwendraeth (AT)	21	3	14.3%	141	71	50.4%	37	3	8.1%
Ceredigion	30	6	20.0%	423	195	46.1%	74	16	21.6%
Aberystwyth (BA)	20	4	20.0%	234	124	53.0%	32	7	21.9%
Aberaeron (BB)	1	1	100.0%	40	20	50.0%	11	1	9.1%
Cardigan (BC)	6	0	0.0%	103	37	35.9%	19	5	26.3%
Lampeter (BL)	3	1	33.3%	46	14	30.4%	12	3	25.0%
Pembrokeshire	74	20	27.0%	719	325	45.2%	167	23	13.8%
Fishguard (CF)	6	3	50.0%	75	32	42.7%	25	2	8.0%
Haverfordwest (CH)	27	5	18.5%	189	71	37.6%	25	3	12.0%
Milford Haven (CM)	16	4	25.0%	173	83	48.0%	25	7	28.0%
Pembroke Dock (CP)	16	4	25.0%	162	68	42.0%	43	4	9.3%
Tenby (CT)	9	4	44.4%	120	71	59.2%	49	7	14.3%
Powys	71	22	31.0%	873	406	46.5%	149	18	12.1%
Brecon (DB)	10	1	10.0%	191	89	46.6%	46	2	4.3%
Llandrindod Wells (DL)	17	8	47.1%	161	98	60.9%	23	4	17.4%
Newtown (DN)	31	10	32.3%	301	109	36.2%	36	4	11.1%
Welshpool (DW)	11	3	27.3%	151	80	53.0%	28	4	14.3%
Ystradgynlais (DY)	2	0	0.0%	69	30	43.5%	16	4	25.0%

Target Contribution Summary - Carmarthenshire

DYFED-POWYS POLICE

GREEN/RED indicates current performance **consistent** or **not consistent** with force target reduction & detection rate

CARMARTHENSHIRE		April-July YTD		Last Year		Indicator
CRIME	Performance	Indicator	Performance	Indicator	Change & Detection	
Total Crime Recorded (per 1,000 population)	4088	23.7	4661	27.0	-12.3%	
Detection (% rate)	1657	40.5%	1740	37.3%	40.5%	
Burglary Dwelling (per 1,000 households)	118	1.6	165	2.3	-28.5%	
Detection (% rate)	18	15.3%	37	22.4%	15.3%	
Total Violent Crime (per 1,000 population)	1062	6.1	1264	7.3	-16.0%	
Detection (% rate)	624	58.8%	704	55.7%	58.8%	
Autocrime per (1,000 population)	294	1.7	359	2.1	-18.1%	
Detection (% rate)	36	12.2%	79	22.0%	12.2%	
Ammanford		April-July YTD		Last Year		Indicator
CRIME	Performance	Indicator	Performance	Indicator	Change & Detection	
Total Crime Recorded (per 1,000 population)	547	16.7	566	17.3	-3.4%	
Detection (% rate)	275	50.3%	266	47.0%	50.3%	
Burglary Dwelling (per 1,000 households)	13	0.9	14	1.0	-7.1%	
Detection (% rate)	5	38.5%	5	35.7%	38.5%	
Total Violent Crime (per 1,000 population)	104	3.2	139	4.3	-25.2%	
Detection (% rate)	59	56.7%	87	62.6%	56.7%	
Autocrime per (1,000 population)	37	1.1	27	0.8	37.0%	
Detection (% rate)	8	21.6%	3	11.1%	21.6%	
Carmarthen		April-July YTD		Last Year		Indicator
CRIME	Performance	Indicator	Performance	Indicator	Change & Detection	
Total Crime Recorded (per 1,000 population)	962	19.5	1091	22.1	-11.8%	
Detection (% rate)	438	45.5%	476	43.6%	45.5%	
Burglary Dwelling (per 1,000 households)	19	0.9	24	1.2	-20.8%	
Detection (% rate)	6	31.6%	3	12.5%	31.6%	
Total Violent Crime (per 1,000 population)	273	5.5	323	6.5	-15.5%	
Detection (% rate)	187	68.5%	201	62.2%	68.5%	
Autocrime per (1,000 population)	38	0.8	57	1.2	-33.3%	
Detection (% rate)	3	7.9%	7	12.3%	7.9%	
Llanelli		April-July YTD		Last Year		Indicator
CRIME	Performance	Indicator	Performance	Indicator	Change & Detection	
Total Crime Recorded (per 1,000 population)	2024	33.5	2433	40.2	-16.8%	
Detection (% rate)	740	36.6%	782	32.1%	36.6%	
Burglary Dwelling (per 1,000 households)	65	2.5	101	3.9	-35.6%	
Detection (% rate)	4	6.2%	21	20.8%	6.2%	
Total Violent Crime (per 1,000 population)	544	9.0	644	10.6	-15.5%	
Detection (% rate)	297	54.6%	334	51.9%	54.6%	
Autocrime per (1,000 population)	182	3.0	229	3.8	-20.5%	
Detection (% rate)	21	11.5%	64	27.9%	11.5%	
Towy/Gwenraeth		April-July YTD		Last Year		Indicator
CRIME	Performance	Indicator	Performance	Indicator	Change & Detection	
Total Crime Recorded (per 1,000 population)	555	18.3	571	18.9	-2.8%	
Detection (% rate)	204	36.8%	216	37.8%	36.8%	
Burglary Dwelling (per 1,000 households)	21	1.7	26	2.1	-19.2%	
Detection (% rate)	3	14.3%	8	30.8%	14.3%	
Total Violent Crime (per 1,000 population)	141	4.7	158	5.2	-10.8%	
Detection (% rate)	81	57.4%	82	51.9%	57.4%	
Autocrime per (1,000 population)	37	1.2	46	1.5	-19.6%	
Detection (% rate)	4	10.8%	5	10.9%	10.8%	

Target Contribution Summary - Ceredigion

DYFED-POWYS POLICE

GREEN/RED indicates current performance **consistent** or **not consistent** with force target reduction & detection rate

CEREDIGION		April-July YTD		Last Year		Indicator
CRIME	Performance	Indicator	Performance	Indicator	Change & Detection	
Total Crime Recorded (per 1,000 population)	1598	21.3	1606	21.4	-0.5%	
Detection (% rate)	685	42.9%	691	43.0%	42.9%	
Burglary Dwelling (per 1,000 households)	30	1.0	44	1.4	-31.8%	
Detection (% rate)	6	20.0%	12	27.3%	20.0%	
Total Violent Crime (per 1,000 population)	423	5.6	457	6.1	-7.4%	
Detection (% rate)	252	59.6%	224	49.0%	59.6%	
Autocrime per (1,000 population)	74	1.0	82	1.1	-9.8%	
Detection (% rate)	17	23.0%	15	18.3%	23.0%	
Ceredigion North		April-July YTD		Last Year		Indicator
CRIME	Performance	Indicator	Performance	Indicator	Change & Detection	
Total Crime Recorded (per 1,000 population)	834	26.2	836	26.3	-0.2%	
Detection (% rate)	365	43.8%	411	49.2%	43.8%	
Burglary Dwelling (per 1,000 households)	20	1.6	14	1.1	42.9%	
Detection (% rate)	4	20.0%	6	42.9%	20.0%	
Total Violent Crime (per 1,000 population)	234	7.4	235	7.4	-0.4%	
Detection (% rate)	143	61.1%	129	54.9%	61.1%	
Autocrime per (1,000 population)	32	1.0	38	1.2	-15.8%	
Detection (% rate)	7	21.9%	3	7.9%	21.9%	
Ceredigion South		April-July YTD		Last Year		Indicator
CRIME	Performance	Indicator	Performance	Indicator	Change & Detection	
Total Crime Recorded (per 1,000 population)	764	17.8	770	17.9	-0.8%	
Detection (% rate)	320	41.9%	277	36.0%	41.9%	
Burglary Dwelling (per 1,000 households)	10	0.5	30	1.6	-66.7%	
Detection (% rate)	2	20.0%	6	20.0%	20.0%	
Total Violent Crime (per 1,000 population)	189	4.4	222	5.2	-14.9%	
Detection (% rate)	109	57.7%	95	42.8%	57.7%	
Autocrime per (1,000 population)	42	1.0	44	1.0	-4.5%	
Detection (% rate)	10	23.8%	12	27.3%	23.8%	

Ceredigion South is an area used for comparison purposes only. It incorporates the three section areas of Lampeter/Aberaeron and Cardigan. Details on these three discrete areas is also included here for information.

Aberaeron		April-July YTD		Last Year		Indicator
CRIME	Performance	Indicator	Performance	Indicator	Change & Detection	
Total Crime Recorded (per 1,000 population)	179	14.1	198	15.6	-9.6%	
Detection (% rate)	72	40.2%	63	31.8%	40.2%	
Burglary Dwelling (per 1,000 households)	1	0.2	9	1.6	-88.9%	
Detection (% rate)	1	100.0%	3	33.3%	100.0%	
Total Violent Crime (per 1,000 population)	40	3.2	59	4.7	-32.2%	
Detection (% rate)	21	52.5%	21	35.6%	52.5%	
Autocrime per (1,000 population)	11	0.9	12	0.9	-8.3%	
Detection (% rate)	2	18.2%	4	33.3%	18.2%	
Cardigan		April-July YTD		Last Year		Indicator
CRIME	Performance	Indicator	Performance	Indicator	Change & Detection	
Total Crime Recorded (per 1,000 population)	398	21.1	383	20.3	3.9%	
Detection (% rate)	158	39.7%	152	39.7%	39.7%	
Burglary Dwelling (per 1,000 households)	6	0.7	8	1.0	-25.0%	
Detection (% rate)	0	0.0%	2	25.0%	0.0%	
Total Violent Crime (per 1,000 population)	103	5.5	116	6.1	-11.2%	
Detection (% rate)	60	58.3%	53	45.7%	58.3%	
Autocrime per (1,000 population)	19	1.0	21	1.1	-9.5%	
Detection (% rate)	5	26.3%	5	23.8%	26.3%	
Lampeter		April-July YTD		Last Year		Indicator
CRIME	Performance	Indicator	Performance	Indicator	Change & Detection	
Total Crime Recorded (per 1,000 population)	187	16.1	189	16.3	-1.1%	
Detection (% rate)	90	48.1%	62	32.8%	48.1%	
Burglary Dwelling (per 1,000 households)	3	0.6	13	2.7	-76.9%	
Detection (% rate)	1	33.3%	1	7.7%	33.3%	
Total Violent Crime (per 1,000 population)	46	4.0	47	4.1	-2.1%	
Detection (% rate)	28	60.9%	21	44.7%	60.9%	
Autocrime per (1,000 population)	12	1.0	11	0.9	9.1%	
Detection (% rate)	3	25.0%	3	27.3%	25.0%	

Target Contribution Summary - Pembrokeshire

DYFED-POWYS POLICE

GREEN/RED indicates current performance **consistent** or **not consistent** with force target reduction & total detection rate

PEMBROKESHIRE		April-July YTD		Last Year		Indicator
CRIME	Performance	Indicator	Performance	Indicator	Change & Detection	
Total Crime Recorded (per 1,000 population)	2855	25.0	2843	24.9	0.4%	
Detection (% rate)	1208	42.3%	1182	41.6%	42.3%	
Burglary Dwelling (per 1,000 households)	74	1.5	80	1.7	-7.5%	
Detection (% rate)	24	32.4%	24	30.0%	32.4%	
Total Violent Crime (per 1,000 population)	719	6.3	813	7.1	-11.6%	
Detection (% rate)	452	62.9%	518	63.7%	62.9%	
Autocrime per (1,000 population)	167	1.5	210	1.8	-20.5%	
Detection (% rate)	27	16.2%	36	17.1%	16.2%	
Fishguard		April-July YTD		Last Year		Indicator
CRIME	Performance	Indicator	Performance	Indicator	Change & Detection	
Total Crime Recorded (per 1,000 population)	309	11.7	342	12.9	-9.6%	
Detection (% rate)	131	42.4%	159	46.5%	42.4%	
Burglary Dwelling (per 1,000 households)	6	0.5	12	1.1	-50.0%	
Detection (% rate)	4	66.7%	4	33.3%	66.7%	
Total Violent Crime (per 1,000 population)	75	2.8	81	3.1	-7.4%	
Detection (% rate)	51	68.0%	62	76.5%	68.0%	
Autocrime per (1,000 population)	25	0.9	25	0.9	0.0%	
Detection (% rate)	3	12.0%	8	32.0%	12.0%	
Haverfordwest		April-July YTD		Last Year		Indicator
CRIME	Performance	Indicator	Performance	Indicator	Change & Detection	
Total Crime Recorded (per 1,000 population)	656	32.8	766	38.3	-14.4%	
Detection (% rate)	262	39.9%	327	42.7%	39.9%	
Burglary Dwelling (per 1,000 households)	27	3.2	24	2.8	12.5%	
Detection (% rate)	6	22.2%	6	25.0%	22.2%	
Total Violent Crime (per 1,000 population)	189	9.5	250	12.5	-24.4%	
Detection (% rate)	106	56.1%	152	60.8%	56.1%	
Autocrime per (1,000 population)	25	1.3	59	3.0	-57.6%	
Detection (% rate)	3	12.0%	11	18.6%	12.0%	
Milford Haven		April-July YTD		Last Year		Indicator
CRIME	Performance	Indicator	Performance	Indicator	Change & Detection	
Total Crime Recorded (per 1,000 population)	566	23.2	602	24.7	-6.0%	
Detection (% rate)	263	46.5%	235	39.0%	46.5%	
Burglary Dwelling (per 1,000 households)	16	1.6	14	1.4	14.3%	
Detection (% rate)	6	37.5%	3	21.4%	37.5%	
Total Violent Crime (per 1,000 population)	173	7.1	151	6.2	14.6%	
Detection (% rate)	109	63.0%	105	69.5%	63.0%	
Autocrime per (1,000 population)	25	1.0	34	1.4	-26.5%	
Detection (% rate)	10	40.0%	6	17.6%	40.0%	
Pembroke Dock		April-July YTD		Last Year		Indicator
CRIME	Performance	Indicator	Performance	Indicator	Change & Detection	
Total Crime Recorded (per 1,000 population)	777	40.7	552	28.9	40.8%	
Detection (% rate)	365	47.0%	237	42.9%	47.0%	
Burglary Dwelling (per 1,000 households)	14	1.7	18	2.2	-22.2%	
Detection (% rate)	3	21.4%	5	27.8%	21.4%	
Total Violent Crime (per 1,000 population)	162	8.5	167	8.7	-3.0%	
Detection (% rate)	105	64.8%	95	56.9%	64.8%	
Autocrime per (1,000 population)	43	2.3	44	2.3	-2.3%	
Detection (% rate)	4	9.3%	6	13.6%	9.3%	
Tenby		April-July YTD		Last Year		Indicator
CRIME	Performance	Indicator	Performance	Indicator	Change & Detection	
Total Crime Recorded (per 1,000 population)	547	22.6	581	24.1	-5.9%	
Detection (% rate)	187	34.2%	213	36.7%	34.2%	
Burglary Dwelling (per 1,000 households)	9	0.9	12	1.2	-25.0%	
Detection (% rate)	4	44.4%	6	50.0%	44.4%	
Total Violent Crime (per 1,000 population)	120	5.0	164	6.8	-26.8%	
Detection (% rate)	81	67.5%	104	63.4%	67.5%	
Autocrime per (1,000 population)	49	2.0	48	2.0	2.1%	
Detection (% rate)	7	14.3%	5	10.4%	14.3%	

Target Contribution Summary - Powys

DYFED-POWYS POLICE

GREEN/RED indicates current performance **consistent** or **not consistent** with force target reduction & detection rate

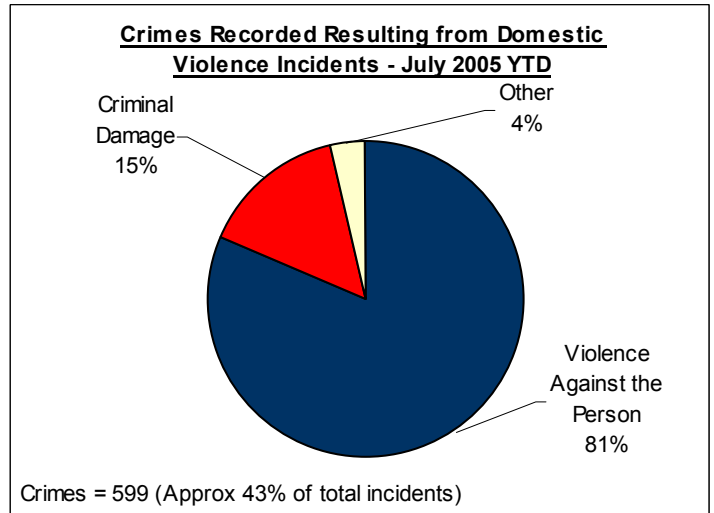
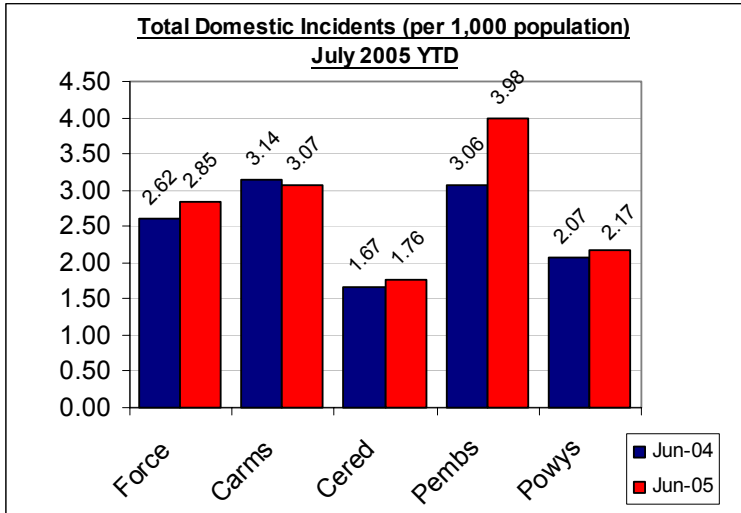
POWYS	April-July YTD		Last Year		Indicator
CRIME	Performance	Indicator	Performance	Indicator	Change & Detection
Total Crime Recorded (per 1,000 population)	2704	21.4	2494	19.7	8.4%
Detection (% rate)	1073	39.7%	1021	40.9%	39.7%
Burglary Dwelling (per 1,000 households)	71	1.3	71	1.3	0.0%
Detection (% rate)	22	31.0%	21	29.6%	31.0%
Total Violent Crime (per 1,000 population)	873	6.9	686	5.4	27.3%
Detection (% rate)	491	56.2%	435	63.4%	56.2%
Autocrime per (1,000 population)	149	1.2	165	1.3	-9.7%
Detection (% rate)	22	14.8%	26	15.8%	14.8%
Brecon	April-July YTD		Last Year		Indicator
CRIME	Performance	Indicator	Performance	Indicator	Change & Detection
Total Crime Recorded (per 1,000 population)	644	25.2	533	20.8	20.8%
Detection (% rate)	229	35.6%	235	44.1%	35.6%
Burglary Dwelling (per 1,000 households)	10	0.9	10	0.9	0.0%
Detection (% rate)	1	10.0%	4	40.0%	10.0%
Total Violent Crime (per 1,000 population)	191	7.5	146	5.7	30.8%
Detection (% rate)	111	58.1%	107	73.3%	58.1%
Autocrime per (1,000 population)	46	1.8	36	1.4	27.8%
Detection (% rate)	2	4.3%	3	8.3%	4.3%
Llandrindod Wells	April-July YTD		Last Year		Indicator
CRIME	Performance	Indicator	Performance	Indicator	Change & Detection
Total Crime Recorded (per 1,000 population)	501	17.8	497	17.6	0.8%
Detection (% rate)	234	46.7%	244	49.1%	46.7%
Burglary Dwelling (per 1,000 households)	17	1.4	17	1.4	0.0%
Detection (% rate)	8	47.1%	5	29.4%	47.1%
Total Violent Crime (per 1,000 population)	161	5.7	140	5.0	15.0%
Detection (% rate)	117	72.7%	102	72.9%	72.7%
Autocrime per (1,000 population)	23	0.8	34	1.2	-32.4%
Detection (% rate)	6	26.1%	6	17.6%	26.1%
Newtown	April-July YTD		Last Year		Indicator
CRIME	Performance	Indicator	Performance	Indicator	Change & Detection
Total Crime Recorded (per 1,000 population)	850	24.2	679	19.3	25.2%
Detection (% rate)	306	36.0%	229	33.7%	36.0%
Burglary Dwelling (per 1,000 households)	31	2.1	28	1.9	10.7%
Detection (% rate)	10	32.3%	5	17.9%	32.3%
Total Violent Crime (per 1,000 population)	301	8.6	189	5.4	59.3%
Detection (% rate)	133	44.2%	111	58.7%	44.2%
Autocrime per (1,000 population)	36	1.0	34	1.0	5.9%
Detection (% rate)	4	11.1%	9	26.5%	11.1%
Welshpool	April-July YTD		Last Year		Indicator
CRIME	Performance	Indicator	Performance	Indicator	Change & Detection
Total Crime Recorded (per 1,000 population)	488	19.1	529	20.7	-7.8%
Detection (% rate)	205	42.0%	191	36.1%	42.0%
Burglary Dwelling (per 1,000 households)	11	1.0	12	1.1	-8.3%
Detection (% rate)	3	27.3%	3	25.0%	27.3%
Total Violent Crime (per 1,000 population)	151	5.9	151	5.9	0.0%
Detection (% rate)	92	60.9%	69	45.7%	60.9%
Autocrime per (1,000 population)	28	1.1	31	1.2	-9.7%
Detection (% rate)	6	21.4%	2	6.5%	21.4%
Ystradgynlais	April-July YTD		Last Year		Indicator
CRIME	Performance	Indicator	Performance	Indicator	Change & Detection
Total Crime Recorded (per 1,000 population)	221	18.6	256	21.6	-13.7%
Detection (% rate)	99	44.8%	119	46.5%	44.8%
Burglary Dwelling (per 1,000 households)	2	0.4	4	0.8	-50.0%
Detection (% rate)	0	0.0%	4	100.0%	0.0%
Total Violent Crime (per 1,000 population)	69	5.8	60	5.1	15.0%
Detection (% rate)	38	55.1%	46	76.7%	55.1%
Autocrime per (1,000 population)	16	1.3	30	2.5	-46.7%
Detection (% rate)	4	25.0%	6	20.0%	25.0%

Domestic Incidents

DYFED POWYS POLICE

SPI 9A TARGET - 80% OF INCIDENTS (WITH A POWER OF ARREST) LEADING TO ARREST
LOCAL TARGET – 30% OF TOTAL INCIDENTS INVOLVING REPEAT VICTIMS

Please note figures provided here are provisional only. For the latest detailed information please contact your local Public Protection Unit (PPU) for further details.



Section & Divisional Summary – July 2005 YTD

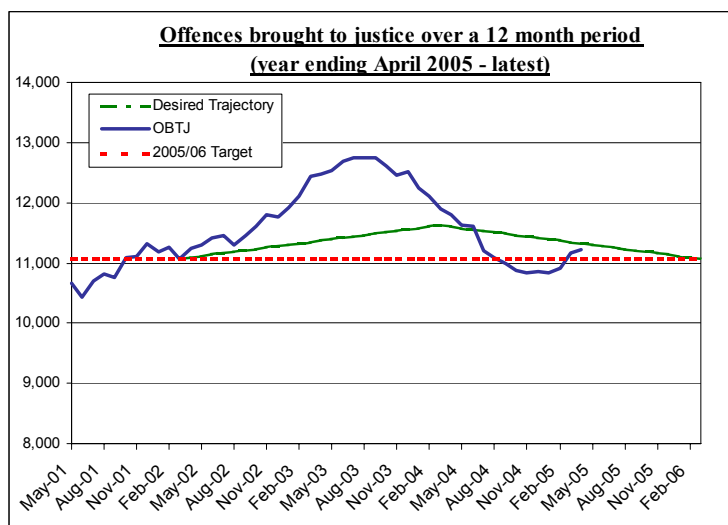
Section	Incidents		Arrests		Sanction Detections			Repeat Victims		Apr-July 2004 (SPLY)	
	Total Incidents	Power Of Arrest	Arrests where POA	% POA	Crimes	Sanction Detections	% Sanction Detection	Total Repeat Victim Incidents	% Repeats	Total Incidents	Annual % Change
Ammanford (AA)	58	21	15	71.4%	18	10	55.6%	12	20.7%	99	-41.4%
Carmarthen (AC)	105	52	41	78.8%	49	28	57.1%	33	31.4%	106	-0.9%
Llanelli (AL)	296	127	94	74.0%	134	46	34.3%	85	28.7%	252	17.5%
Towy Gwendraeth (AT)	71	27	17	63.0%	26	15	57.7%	14	19.7%	86	-17.4%
Carmarthenshire	530	227	167	73.6%	227	99	43.6%	144	27.2%	543	-2.4%
Aberystwyth (BA)	79	44	37	84.1%	36	17	47.2%	10	12.7%	63	25.4%
Aberaeron (BB)	9	6	4	66.7%	5	4	80.0%	2	22.2%	21	-57.1%
Cardigan (BC)	29	15	11	73.3%	18	7	38.9%	8	27.6%	33	-12.1%
Lampeter (BL)	15	7	6	85.7%	10	2	20.0%	2	13.3%	8	87.5%
Ceredigion	132	72	58	80.6%	69	30	43.5%	22	16.7%	125	5.6%
Fishguard (CF)	63	25	21	84.0%	25	11	44.0%	26	41.3%	39	61.5%
Haverfordwest (CH)	98	36	28	77.8%	41	4	9.8%	36	36.7%	86	14.0%
Milford Haven (CM)	114	44	31	70.5%	41	22	53.7%	45	39.5%	88	29.5%
Pembroke Dock (CP)	115	55	45	81.8%	37	13	35.1%	43	37.4%	92	25.0%
Tenby (CT)	64	26	21	80.8%	23	12	52.2%	22	34.4%	44	45.5%
Pembrokeshire	454	186	146	78.5%	167	62	37.1%	172	37.9%	349	30.1%
Brecon (DB)	53	23	25	108.7%	23	7	30.4%	14	26.4%	61	-13.1%
Llandrindod Wells (DL)	43	13	12	92.3%	21	6	28.6%	10	23.3%	41	4.9%
Newtown (DN)	86	43	40	93.0%	47	16	34.0%	25	29.1%	68	26.5%
Welshpool (DW)	49	17	17	100.0%	24	6	25.0%	17	34.7%	62	-21.0%
Ystradgynlais (DY)	43	19	18	94.7%	21	11	52.4%	21	48.8%	30	43.3%
Powys	274	115	112	97.4%	136	46	33.8%	87	31.8%	262	4.6%
Force	1390	600	483	80.5%	599	237	39.6%	425	30.6%	1279	8.7%

Source: LCS Recorded Domestic Incident Details (extracted 08/08/05 & 12/08/05 - SPLY)

Narrowing the Justice Gap - OFFENCES BROUGHT TO JUSTICE & SANCTION DETECTIONS

TARGET 2005/06 : 11,068 total OBJ (Offences Brought to Justice)

Total Offences Brought to Justice (OBJ) - Force



Offences brought to justice – 12 monthly data	TIC	PND	Formal Warnings	Cautions	Convictions	OBJ
Baseline: Apr 01 – Mar 02	420	-	-	3,698	6,900	11,068
Latest: May 04 – Apr 05	438	416	887	3,562	5,925	11,228
Change	+4%	-	-	-4%	-14%	+1%
2005/06 Force Target (0%- 11,068 OBJ)	YES	n/a	YES	NO	NO	NO

Divisional Contribution Toward OBJ Volumes – Approximate Latest

Please note this data is provided as a **guide only** - it is based on the assumption that the distribution of sanction detections throughout the force will ultimately be mirrored in the distribution of OBJ recorded for that month (or latest available). It is provided here for information only.

Approx OBJ	Apr-05 OBJ	Target**	Diff from Target
Carmarthenshire	386	331	16.6%
Ceredigion	149	145	3.2%
Pembrokeshire	273	245	11.3%
Powys	205	201	1.8%
Force	1013	922	9.9%

** - Target profile required to attain the end of year target of 11,068 OBJ. Approximate divisional distribution is based on 2004/05 contributions toward total force sanction detections).

Sanction Detection Volume Performance YTD – Current Clear-Up Breakdown (Annual % Change)

The current volume of sanction detections (July 05 YTD) is up 15% on the same period last year (up 510 from 3397).

Area – July YTD	Charged	Summons	Cautioned	TIC	PND	F. Warning for Cannabis*	Total Sanction Dets
Carmarthenshire	690 (-2%)	16 (-47%)	414 (+10%)	33 (-40%)	86 (3 sply)	156 (+58%)	1395 (+10%)
Ceredigion	285 (+3%)	16 (-24%)	216 (+11%)	11 (-60%)	11 (2 sply)	53 (+2%)	592 (+3%)
Pembrokeshire	378 (-10%)	14 (-60%)	383 (+18%)	100 (10 sply)	64 (5 sply)	62 (no change)	1001 (+17%)
Powys	470 (+18%)	39 (+56%)	277 (+11%)	39 (4 sply)	77 (2 sply)	27 (+35%)	929 (+33%)
Force	1823 (+1%)	85 (-23%)	1290 (+12%)	183 (+93%)	238 (12 sply)	288 (+24%)	3907 (+15%)

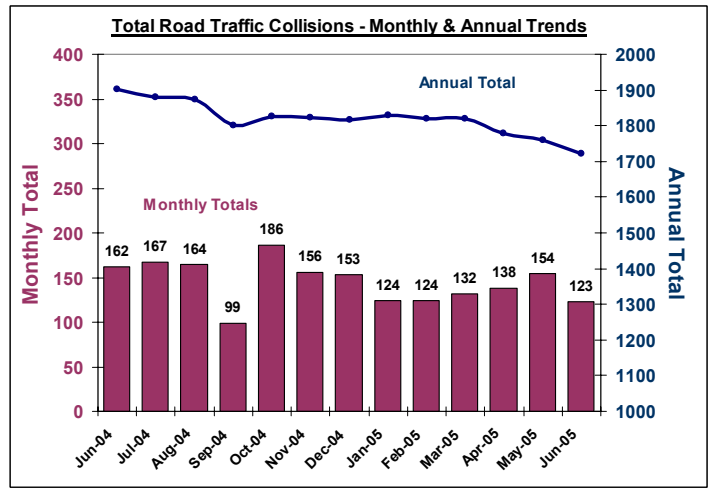
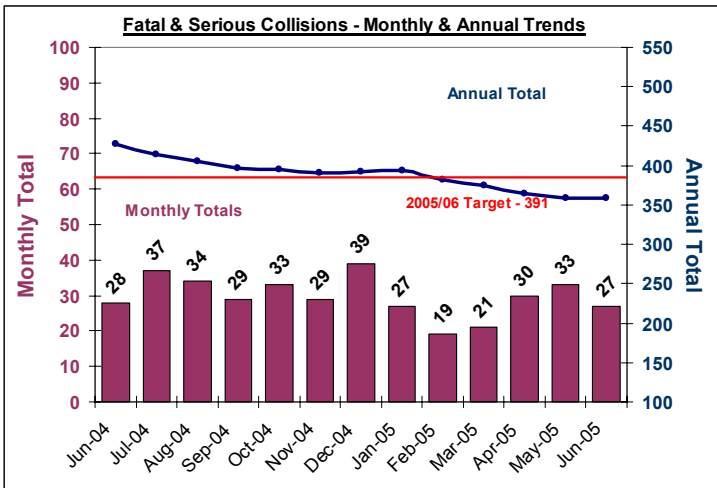
* - SPLY Data Approximate

Road Traffic Collisions

June Monthly Data Latest available

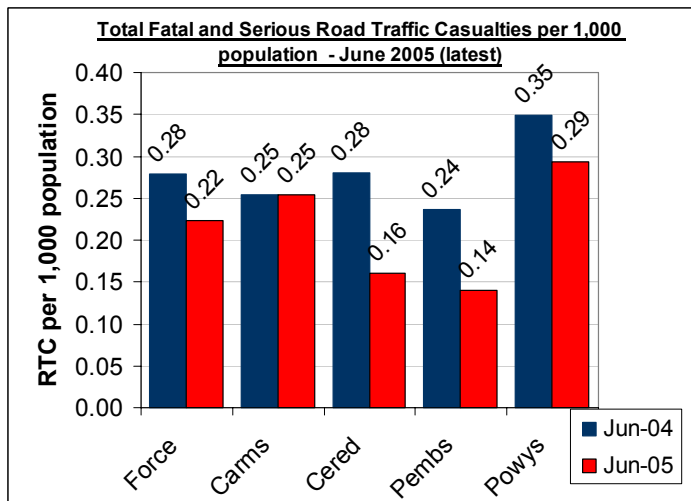
TARGET 2005/06 : 391 FATAL AND SERIOUS COLLISIONS (0.8 PER 1,000 POPULATION)

Road Traffic Collisions – Monthly & Annual Trends (June 05 - latest data)



Performance YTD (June 2005 YTD - latest)	FORCE	Carms	Cered	Pembs	Powys
Fatal Road Collisions YTD	8	3	0	1	4
Serious & Fatal Road Collisions YTD	90	34	12	12	32
Indicator - Per 1,000 population	0.18	0.20	0.16	0.11	0.25
On-Target (0.20 pro-rata)	YES	YES	YES	YES	NO
Fatal (SPLY)	16	8	1	3	4
Serious & Fatal (SPLY)	109	38	16	19	36

Road Traffic Casualties – 2010 Target Progress



June 2005 YTD (latest)	Force	Carms	Cered	Pembs	Powys
Number of people killed or seriously injured casualties	109	44	12	16	37
At 2010 Target Level*	YES	YES	YES	YES	YES
Number of Children (<=15 yrs) killed or seriously injured	8	4	3	1	0
At 2010 Target Level*	YES	YES	YES	YES	YES
Number of persons with slight injuries	556	201	103	107	145
At 2010 Target Level*	NO	NO	NO	NO	NO

* 2010 Targets Established with Roads Policing Strategy, Operations Dept & National Road Policing Targets. Progress towards Pro-Rata year-end 2010 target illustrated here

Source: MAAP RTC Database 08/08/05

PPAF Statutory Performance Indicator Summary

Reported Quarterly

* - HOME OFFICE POLICE PERFORMANCE ASSESSMENT FRAMEWORK MEASURES

This Data is Updated Quarterly – Latest: 2004/05 End of Year Data

SPI Number	Indicator Description	2004/05 Performance	2004/05 End of Year Target	2005-06 DPP Target
1a	Satisfaction of victims of domestic burglary, violent crime, vehicle crime and road traffic collisions with respect to - a) making contact with the Police	91.9%	NEW	92%
1b	b) action taken by the Police	83.6%	NEW	83%
1c	c) Being kept informed of progress	70.1%	NEW	70%
1d	d) Their treatment by staff	91.8%	NEW	92%
1e	e) the overall service provided	84.9%	NEW	85%
2a	Using the BCS, the % of people who think their local police do a good job	NEW	NEW	NEW
3a	Satisfaction of victims of racist incidents with respect to the overall service provided	79.2%	NEW	85%
3b	From SPI 1(e), comparison of satisfaction for white users and users from visible minority ethnic groups with respect to the overall service provided.	White - 84.5% Ethnic - 71.7%	NEW	White - 85% Ethnic - 72%
3c(i)	(i) % of PACE stop/searches which lead to arrest by ethnicity	White - 17.0% Ethnic - 27.2%	White - 20% Ethnic - 20%	White - 20% Ethnic - 20%
3c(ii)	(ii) % of other (non-PAE) stop/searches which lead to arrest by ethnicity	NEW	NEW	NEW
3d	Comparison of percentage detected of violence against the person offences by ethnicity of the victim (sanction detections)	White - 31.2% Ethnic - 31.5%	NEW	White - 31% Ethnic - 31%
3e	Proportion of police recruits (ethnic) compared to the proportion of people from minority ethnic groups in the economically active population.	0% (No ethnic recruits)	NEW	NEW
3f	Ratio of officers from minority ethnic groups residing to all officer resignations	NEW	NEW	NEW
3g	% of female police officers compared to overall Force strength.	19.7%	NEW	19%
4a	Using the British Crime Survey (a) the risk of personal crime; and	8%	4%	8%
4b	(b) the risk of household crime.	11%	10%	11%
5a	(a) Domestic Burglaries per 1,000 households.	5.06 (1042 crimes)	4.7 (960 crimes)	5.06 (1042 crimes)
5b	(b) Violent crime per 1,000 population.	18.14 (8859 crimes)	16.7 (8145 crimes)	17.60 (8593 crimes)
5c	(c) Robberies per 1,000 population.	0.08 (41 crimes)	0.08 (40 crimes)	0.1 (48 crimes)
5d	(d) Vehicle crime per 1,000 population.	4.77 (2331 crimes)	4.4 (2136 crimes)	4.77 (2331 crimes)
5e	(e) Life threatening crime and gun crime per 1,000 population.	0.28 (139 crimes)	NEW	0.28
6a	Number of notifiable/recorded offences resulting in convictions, caution or taken into consideration at court	10,730	12872	11,068
6b	% of notifiable/recorded offences resulting in convictions, caution or taken into consideration at court	33.2%	NEW	NEW
7a	% of notifiable/recorded offences resulting in charge, summons, caution or taken into consideration at court ('sanction detections')	32.5%	43%	31%
8a	Percentage of domestic violence incidents with a power of arrest where an arrest was made relating to the incident.	81.5%	80.0%	80%
9a(i)	I) Number of people killed in under 30 days or seriously injured in road traffic collisions	397 fatal or serious collisions	415 fatal or serious collisions	391 fatal or serious collisions
9a(ii)	(ii) Number of persons killed or seriously injured in road traffic collisions per 100million vehicle kilometres travelled.	8.26	8.63	8.13
10a	Using the British Crime Survey a) fear of crime	9%	10%	10%
10b	Perceptions of anti-social behaviour; and	NEW	NEW	NEW
10c	Perceptions of local drug use / drug dealing	NEW	NEW	NEW
11a	Percentage of police officer time spent on frontline duties	tbc	NEW	68.5%
12a	Delivery of cashable and non-cashable efficiency targets	NEW	NEW	NEW
13a	Average number of working hours lost due to sickness per police officer.	92.8 hours	NEW	92.8 hours
13b	Average number of working hours lost due to sickness by police staff.	80.7 hours	NEW	80.7 hours