



# Heddlu Dyfed-Powys Police

## **CRIME TRENDS UPDATE** **August 2005**

### **Contents:**

Headline Statistics	2
Most Frequent Recorded Offences Profile	3
Recorded Crimes and Detection Rates	4
Domestic Burglaries and Detection Rates	5
Other Burglary and Detection Rates	6
Violent Crime and Detection Rates	7
Vehicle Crime and Detection Rates	8
Criminal Damage and Detection Rates	9
Drugs Statistics and Detection Rates	10
Section Level Sanction Detection Summary	11
Divisional Contribution to Targets	12
Domestic Incidents	16
Narrowing the Justice Gap	17
Road Traffic Collisions	18
PPAF Statutory Performance Indicator Summary	19

Heddlu Dyfed Powys Police: Corporate Services



## Recorded Crime:

- Total Recorded Crime is down by 5% (-781 crimes) compared to the same period last year (SPLY) to stand at 13960 crimes. The monthly figure for August 2005 stands at 2,715 – a fall of 14% (-424 offences) on the same month in 2004, and 3% (-87 offences) down on the preceding month July 2005.
- Recorded detection performance has a total detection rate for the force at 41% (5768 total detections) compared with 39% the previous year. The volume of total detections has increased by 2% (+89 detections). The sanction detection rate stands at 35% (compared with 29% last year) with the volume increasing by 650 or 15%. This is consistent with the target rate of 31%.

## Domestic Burglary:

- Total Domestic Burglary is down by 29% (-139 crimes) compared to the same period last year (SPLY) to stand at 347 crimes. The monthly figure for August 2005 stands at 54 – a fall of 57% (-72 offences) on the same month in 2004, and a 37% (-31 offences) fall on the preceding month July 2005.
- Recorded detection performance is higher than last year, with the total detection rate for the force at 27% (94 detections) compared with 24% the previous year. The volume of total detections has decreased by 19% (-22) as a consequence of this substantial fall in offences. The sanction detection rate stands at 26% (up from 20% last year) with the volume of sanction detections falling by 9% (-9).

## Violent Crimes:

- Total Violent crime is down by 7% (-272 crimes) compared to the same period last year (SPLY) to stand at 3829 crimes. The monthly figure for August 2005 stands at 752 – a fall of 15% (-130 offences) on the same month in 2004, and a 7% (-56 offences) fall on the preceding month July 2005.
- Recorded detection performance stands at a total detection rate for the force of 60% (2294 detections) up from 57% last year. The volume of total detections has decreased by 2% (-54) as a consequence of this fall in offences. However, the sanction detection rate stands at 47% (compared with 38% last year) with the volume up by 17% (+269 sanction detections).

## Vehicle Crime:

- Total Vehicle crime is down by 21% (-228 crimes) compared to the same period last year (SPLY) to stand at 852 crimes. The monthly figure for August 2005 stands at 168 – a fall of 36% (-96 offences) on the same month in 2004, and a 5% fall (-8 offences) on the preceding month July 2005.
- Recorded total detection stands at 15% (125 detections) down from 18% the previous year. The volume of total detections has decreased by 37% (-73) as a consequence this fall in recorded offences. The sanction detection rate stands at 13% (compared with 16% last year) with the volume down considerably (-62 sanction detections or 36%).

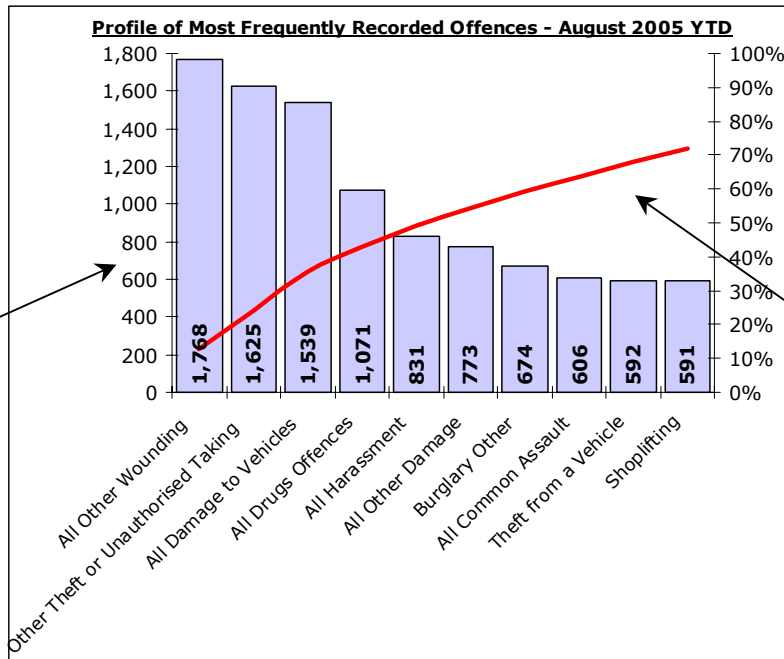
## Criminal Damage:

- Total Criminal Damage is down by 5% (-174 crimes) compared to the same period last year (SPLY) to stand at 3442 (excl Arson & Threat to Commit CD). The monthly figure for August 2005 stands at 686 – a fall of 10% (-74 offences) on the same month in 2004, and a fall of 2% (-13) on the previous month July 2005.
- Recorded detection performance has improved, with the total detection rate for the force at 25% (873 total detections) unchanged from the previous year. The volume of total detections is unchanged at 873 despite falling levels of offences. The sanction detection rate stands at 20% (compared with 17% last year) with the volume up by 18% (+106 sanction detections).

# Most Frequent Recorded Offences Profile

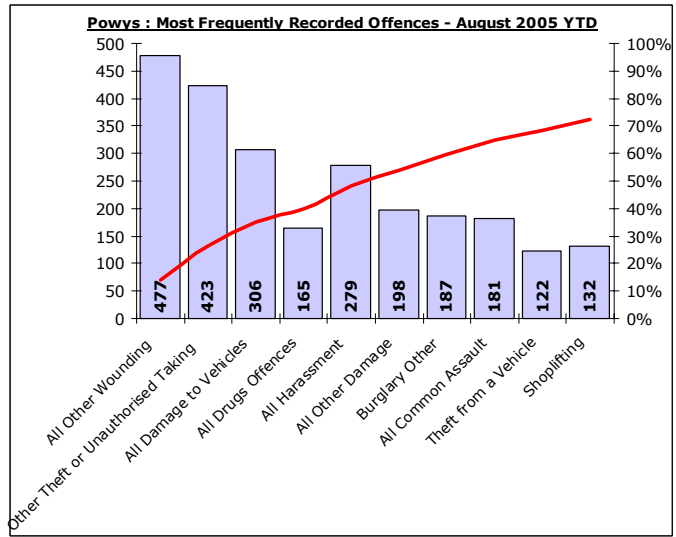
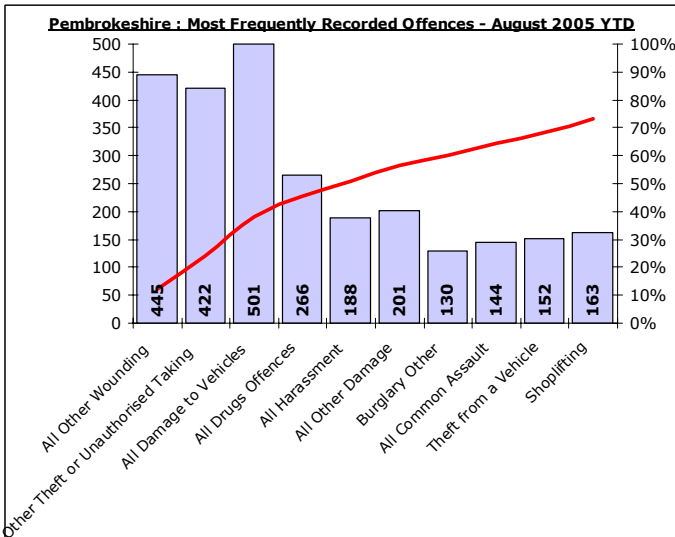
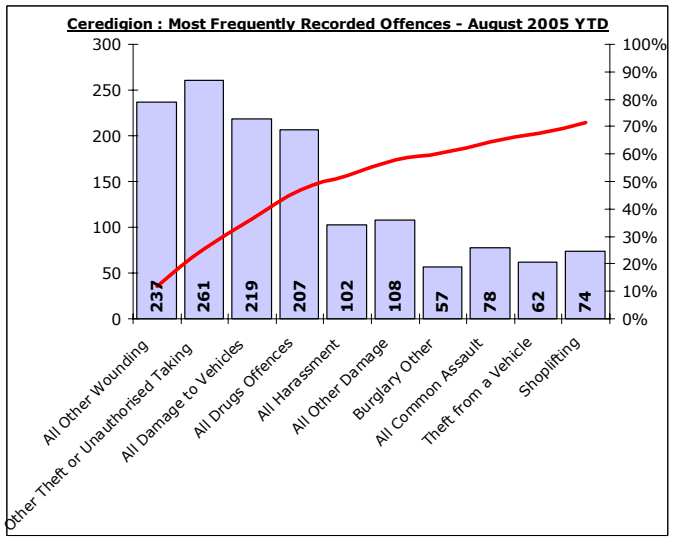
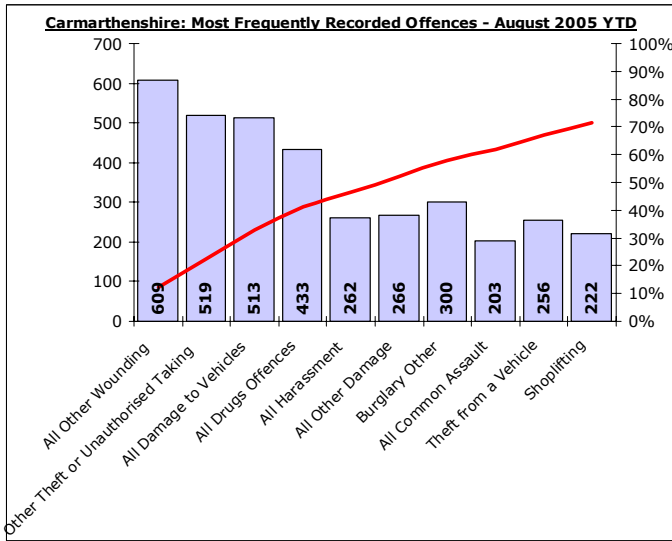
DYFED-POWYS POLICE

August 2005 YTD (Note : Divisonal profiles are in the same sequence as forces' most frequent categories – for comparison)



Recorded offences in each category in order of volume.  
  
(Note these can include a number of sub-categories)

The cumulative contribution of these offence categories toward the total volume of offences recorded.

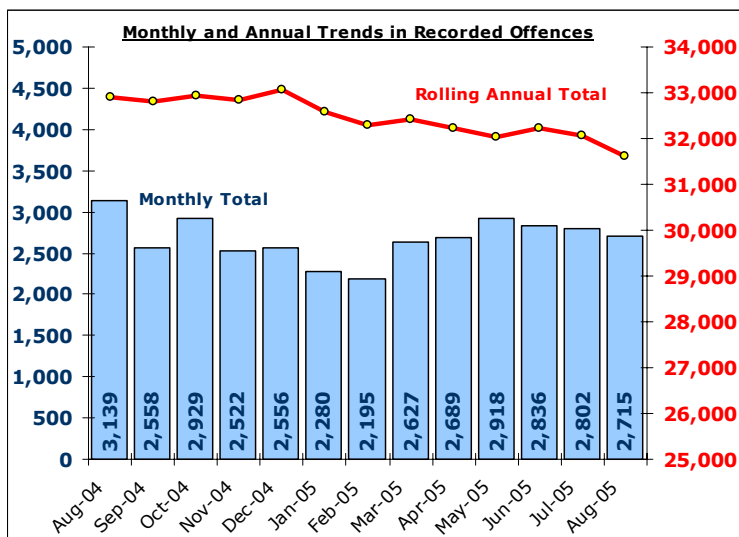


# Total Recorded Crime

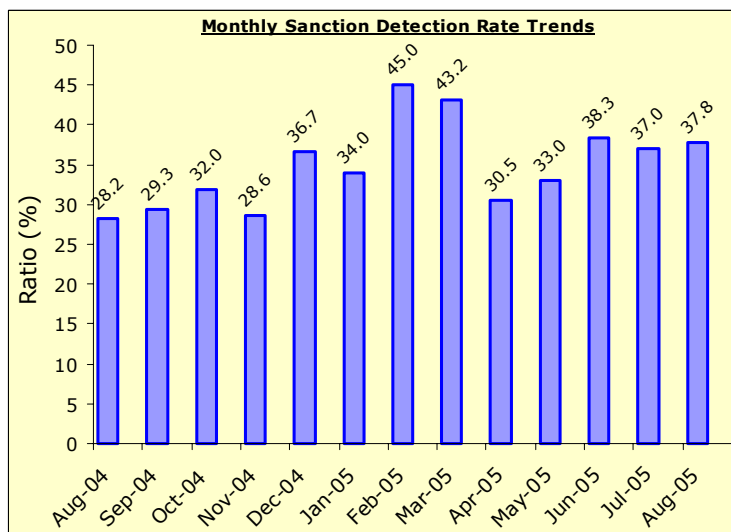
DYFED-POWYS POLICE

TARGET 2005/06 : NO TARGET

## Recorded Crime Levels – August 2005

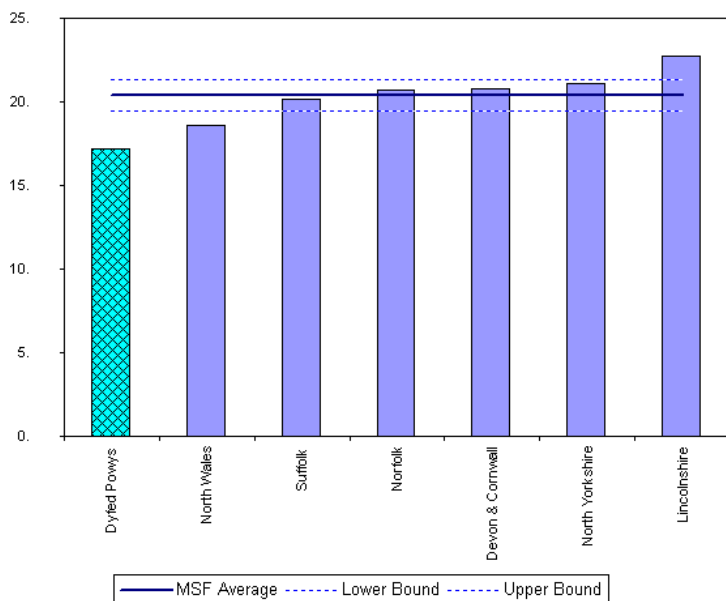


## Monthly Sanction Detection Rates – August 2005

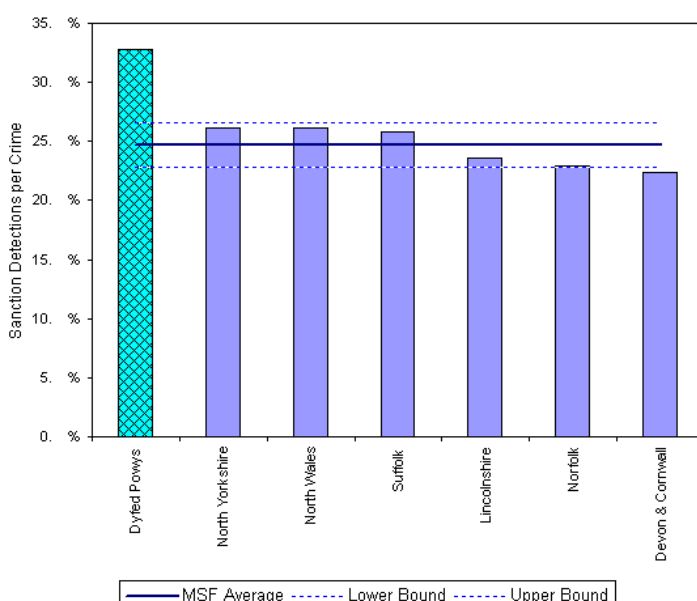


Total Recorded Crimes: August 2005 YTD	August 2005 YTD			Detection Rates YTD		Annual Trends - SPLY		
	Crimes	Sanction Dets	Total Dets	Sanction %	Total %	Crimes SPLY	Change	% Change
<b>FORCE</b>	<b>13,960</b>	<b>4,932</b>	<b>5,768</b>	<b>35.3%</b>	<b>41.3%</b>	<b>14,741</b>	<b>- 781</b>	<b>- 5.3%</b>
<b>CARMS</b>	<b>5,005</b>	<b>1,743</b>	<b>2,040</b>	<b>34.8%</b>	<b>40.8%</b>	<b>5,740</b>	<b>- 735</b>	<b>- 12.8%</b>
<b>CERED</b>	<b>1,965</b>	<b>725</b>	<b>853</b>	<b>36.9%</b>	<b>43.4%</b>	<b>2,035</b>	<b>- 70</b>	<b>- 3.4%</b>
<b>PEMBS</b>	<b>3,572</b>	<b>1,224</b>	<b>1,490</b>	<b>34.3%</b>	<b>41.7%</b>	<b>3,790</b>	<b>- 218</b>	<b>- 5.8%</b>
<b>POWYS</b>	<b>3,418</b>	<b>1,240</b>	<b>1,385</b>	<b>36.3%</b>	<b>40.5%</b>	<b>3,176</b>	<b>+ 242</b>	<b>+ 7.6%</b>

## MSF – Crimes per 1000 Residents 01 May 2005 – 31 July 2005



## MSF – Sanction detections (annual): 01 August 2004 – 31 July 2005



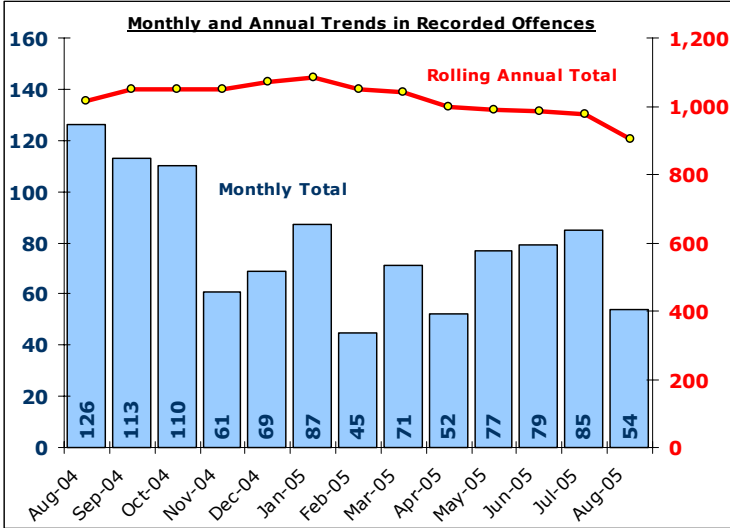
Bar chart MSF - Sanction Detections per Crime-Dyfed Powys-All Crime-01 Aug 2004 - 31 Jul 2005

# Domestic Burglary

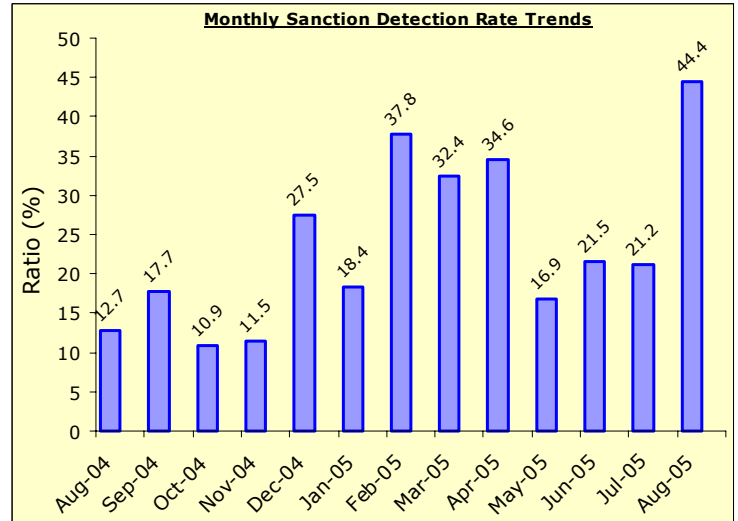
DYFED-POWYS POLICE

**TARGET 2005/06 : 0% Increase in offences & 28% total detection rate**

## Recorded Crime Levels – August 2005

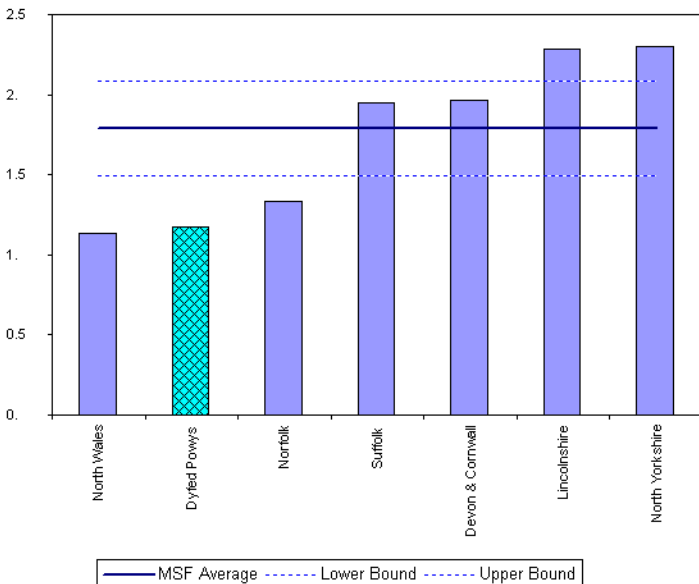


## Monthly Sanction Detection Rates – August 2005

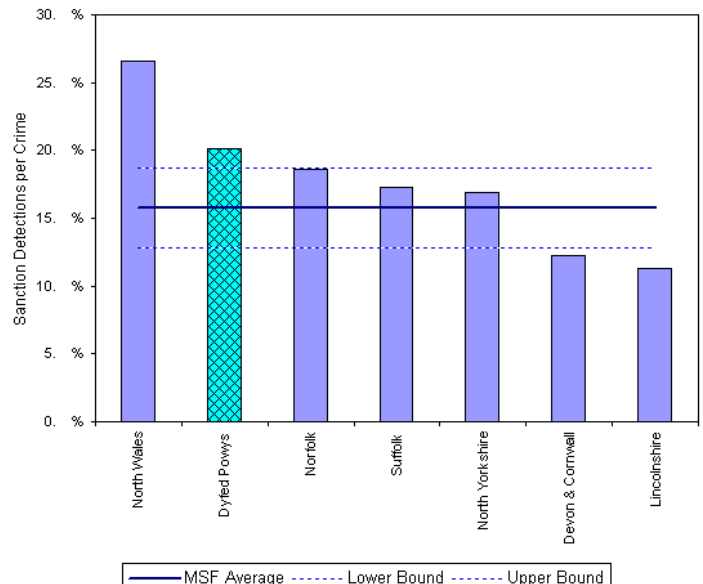


Total Domestic Burglary: August 2005 YTD	August 2005 YTD			Detection Rates YTD		Annual Trends - SPLY		
	Crimes	Sanction Dets	Total Dets	Sanction %	Total %	Crimes SPLY	Change	% Change
<b>FORCE</b>	<b>347</b>	<b>90</b>	<b>94</b>	<b>25.9%</b>	<b>27.1%</b>	<b>486</b>	<b>- 139</b>	<b>- 28.6%</b>
<b>CARMS</b>	<b>141</b>	<b>35</b>	<b>35</b>	<b>24.8%</b>	<b>24.8%</b>	<b>219</b>	<b>- 78</b>	<b>- 35.6%</b>
<b>CERED</b>	<b>35</b>	<b>7</b>	<b>7</b>	<b>20.0%</b>	<b>20.0%</b>	<b>54</b>	<b>- 19</b>	<b>- 35.2%</b>
<b>PEMBS</b>	<b>88</b>	<b>25</b>	<b>29</b>	<b>28.4%</b>	<b>33.0%</b>	<b>119</b>	<b>- 31</b>	<b>- 26.1%</b>
<b>POWYS</b>	<b>83</b>	<b>23</b>	<b>23</b>	<b>27.7%</b>	<b>27.7%</b>	<b>94</b>	<b>- 11</b>	<b>- 11.7%</b>

## MSF – Crimes per 1000 Residents 01 May 2005 – 31 July 2005



## MSF – Sanction detections (annual): 01 August 2004 – 31 July 2005



Source : CORA Analysis & IQuantA

# Other Burglary

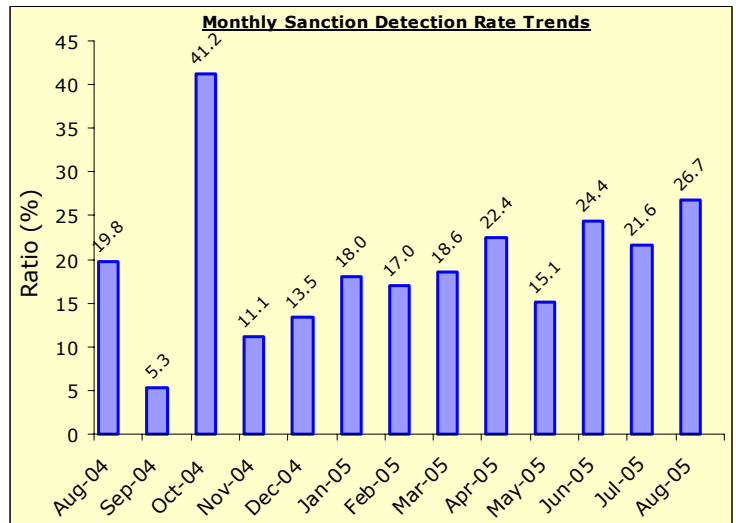
DYFED-POWYS POLICE

**TARGET 2005/06 : No Target**

## Recorded Crime Levels – August 2005

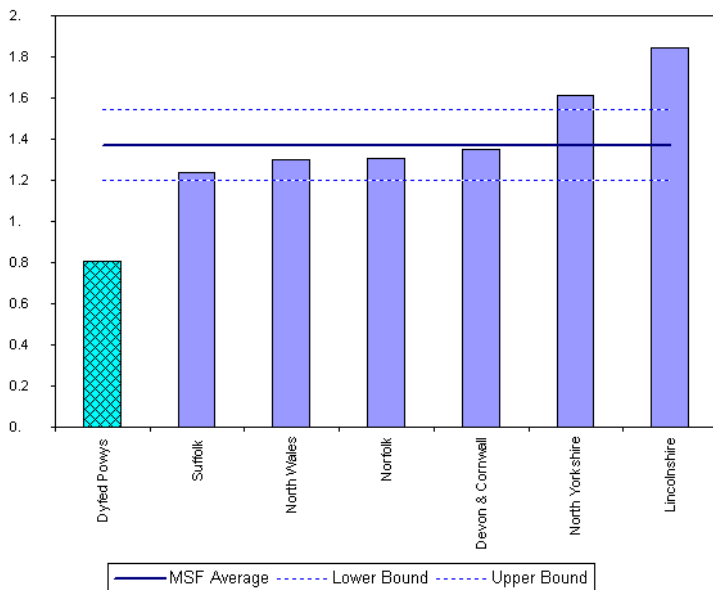


## Monthly Sanction Detection Rates – August 2005

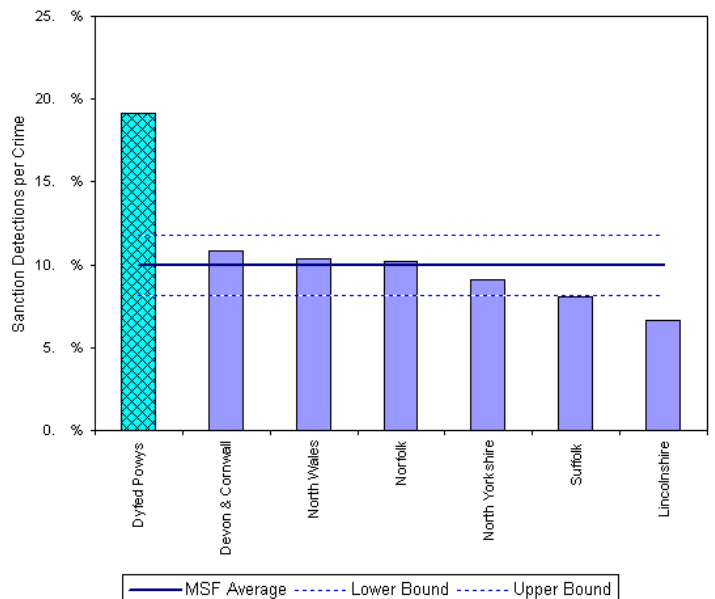


Total Other Burglary Crimes: August 2005 YTD	August 2005 YTD			Detection Rates YTD		Annual Trends - SPLY		
	Crimes	Sanction Dets	Total Dets	Sanction %	Total %	Crimes SPLY	Change	% Change
<b>FORCE</b>	674	147	151	21.8%	22.4%	804	- 130	- 16.2%
<b>CARMS</b>	300	61	63	20.3%	21.0%	394	- 94	- 23.9%
<b>CERED</b>	57	7	7	12.3%	12.3%	103	- 46	- 44.7%
<b>PEMBS</b>	130	28	29	21.5%	22.3%	140	- 10	- 7.1%
<b>POWYS</b>	187	51	52	27.3%	27.8%	167	+ 20	+ 12.0%

## MSF – Crimes per 1000 Residents 01 May 2005 – 31 July 2005



## MSF – Sanction detections (annual): 01 August 2004 – 31 July 2005



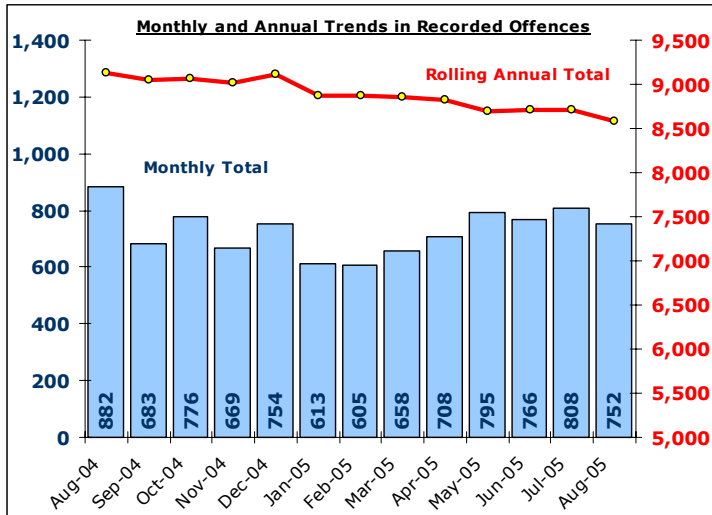
BarChart MSF - Sanction Detections per Crime-Dyfed Powys-Mon Domestic Burglary-01 Aug 2004 - 31 Jul 2005

# Total Violent Crime

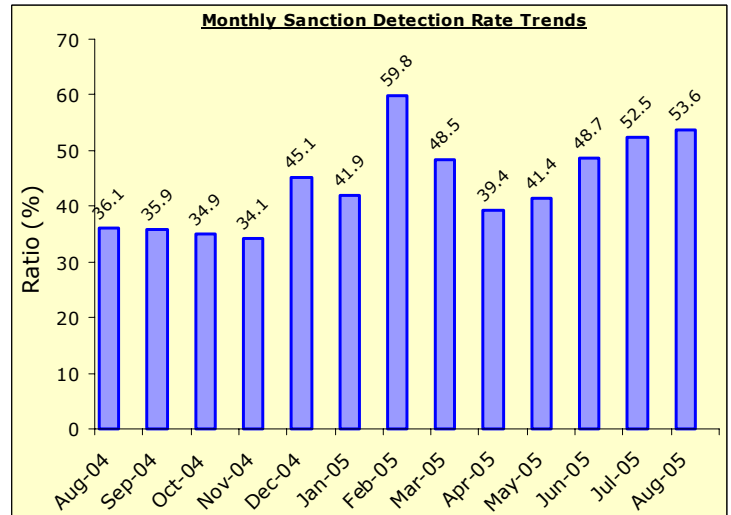
DYFED-POWYS POLICE

**TARGET 2005/06 – 3% Reduction in offences & 60% total detection rate**

## Recorded Crime Levels – August 2005

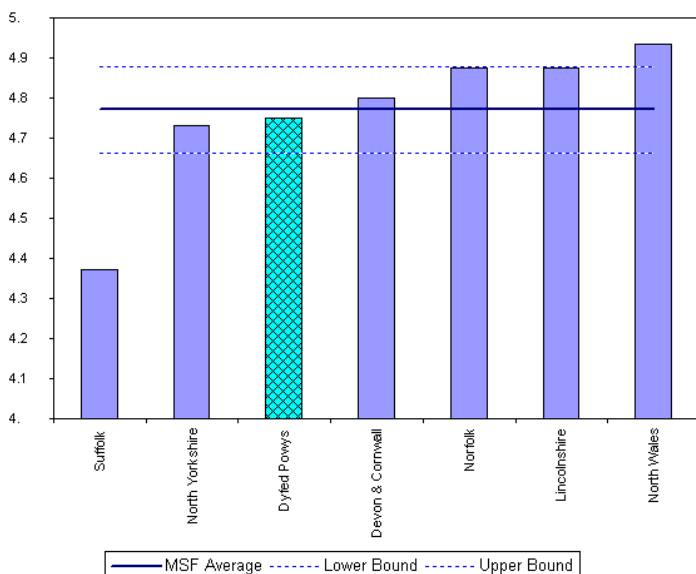


## Monthly Sanction Detection Rates – August 2005

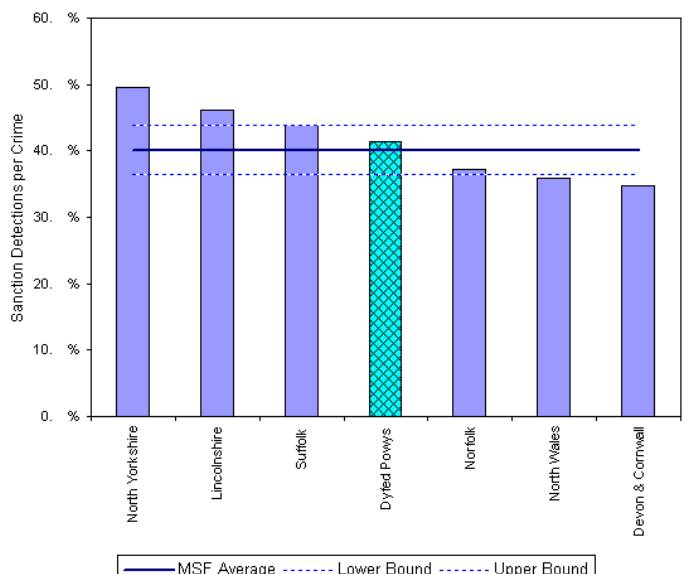


Total Violent Crimes: August 2005 YTD	August 2005 YTD			Detection Rates YTD		Annual Trends - SPLY		
	Crimes	Sanction Dets	Total Dets	Sanction %	Total %	Crimes SPLY	Change	% Change
<b>FORCE</b>	<b>3,829</b>	<b>1,808</b>	<b>2,294</b>	<b>47.2%</b>	<b>59.9%</b>	<b>4,101</b>	<b>- 272</b>	<b>- 6.6%</b>
<b>CARMS</b>	<b>1,307</b>	<b>592</b>	<b>757</b>	<b>45.3%</b>	<b>57.9%</b>	<b>1,559</b>	<b>- 252</b>	<b>- 16.2%</b>
<b>CERED</b>	<b>521</b>	<b>253</b>	<b>333</b>	<b>48.6%</b>	<b>63.9%</b>	<b>602</b>	<b>- 81</b>	<b>- 13.5%</b>
<b>PEMBS</b>	<b>905</b>	<b>421</b>	<b>577</b>	<b>46.5%</b>	<b>63.8%</b>	<b>1,041</b>	<b>- 136</b>	<b>- 13.1%</b>
<b>POWYS</b>	<b>1,096</b>	<b>542</b>	<b>627</b>	<b>49.5%</b>	<b>57.2%</b>	<b>899</b>	<b>+ 197</b>	<b>+ 21.9%</b>

## MSF – Crimes per 1000 Residents 01 May 2005 – 31 July 2005



## MSF – Sanction detections (annual): 01 August 2004 – 31 July 2005



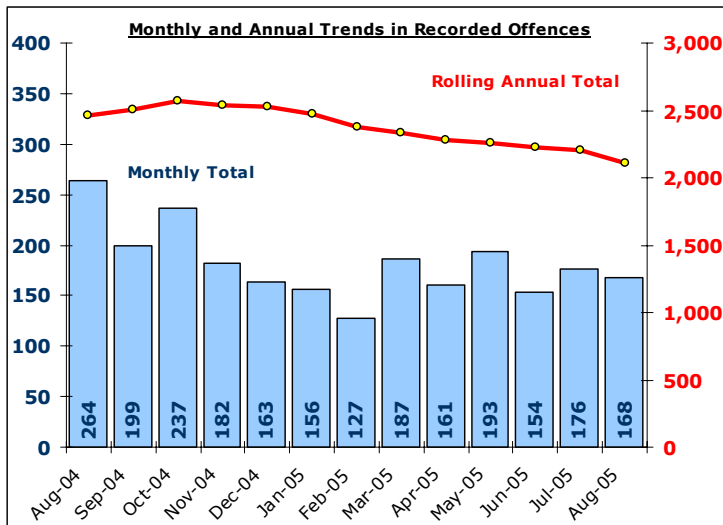
Bar chart MSF - Sanction Detections per Crime-Dyfed Powys-Violent Crime-01 Aug 2004 - 31 Jul 2005

# Total Vehicle Crime

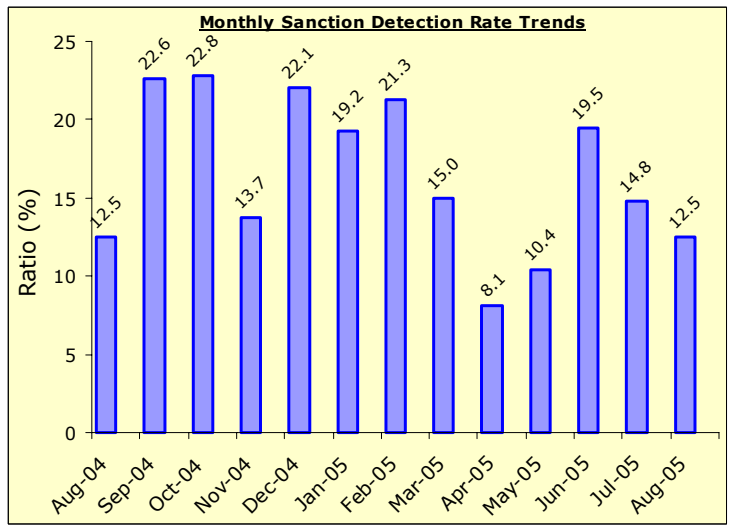
DYFED-POWYS POLICE

**TARGET 2005/06 : 0% Increase in offences & 20% total detection rate**

## Recorded Crime Levels – August 2005

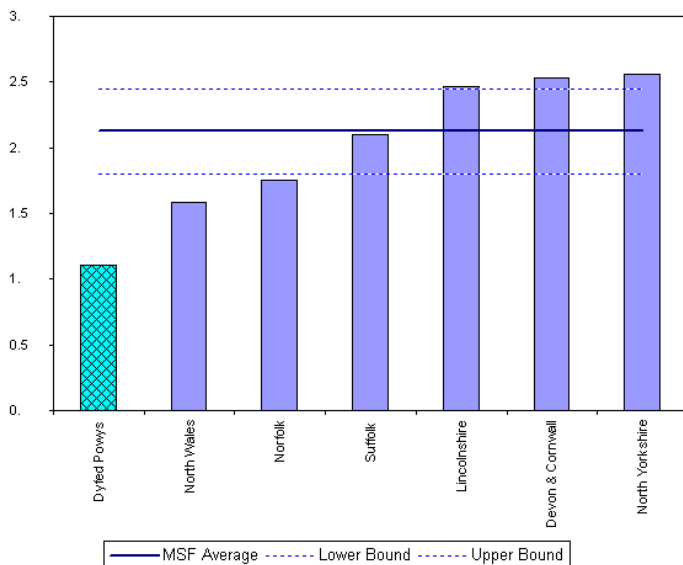


## Monthly Sanction Detection Rates – August 2005

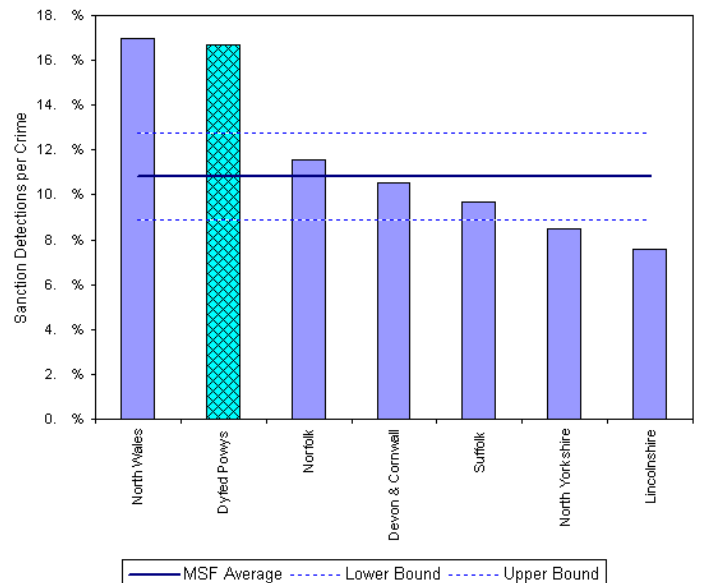


Total Vehicle Crimes: August 2005 YTD	August 2005 YTD			Detection Rates YTD		Annual Trends - SPLY		
	Crimes	Sanction Dets	Total Dets	Sanction %	Total %	Crimes SPLY	Change	% Change
<b>FORCE</b>	<b>852</b>	<b>110</b>	<b>125</b>	<b>12.9%</b>	<b>14.7%</b>	<b>1,080</b>	<b>- 228</b>	<b>- 21.1%</b>
<b>CARMS</b>	<b>356</b>	<b>36</b>	<b>41</b>	<b>10.1%</b>	<b>11.5%</b>	<b>429</b>	<b>- 73</b>	<b>- 17.0%</b>
<b>CERED</b>	<b>92</b>	<b>18</b>	<b>19</b>	<b>19.6%</b>	<b>20.7%</b>	<b>103</b>	<b>- 11</b>	<b>- 10.7%</b>
<b>PEMBS</b>	<b>215</b>	<b>29</b>	<b>34</b>	<b>13.5%</b>	<b>15.8%</b>	<b>316</b>	<b>- 101</b>	<b>- 32.0%</b>
<b>POWYS</b>	<b>189</b>	<b>27</b>	<b>31</b>	<b>14.3%</b>	<b>16.4%</b>	<b>232</b>	<b>- 43</b>	<b>- 18.5%</b>

## MSF – Crimes per 1000 Residents 01 May 2005 – 31 July 2005



## MSF – Sanction detections (annual): 01 August 2004 – 31 July 2005



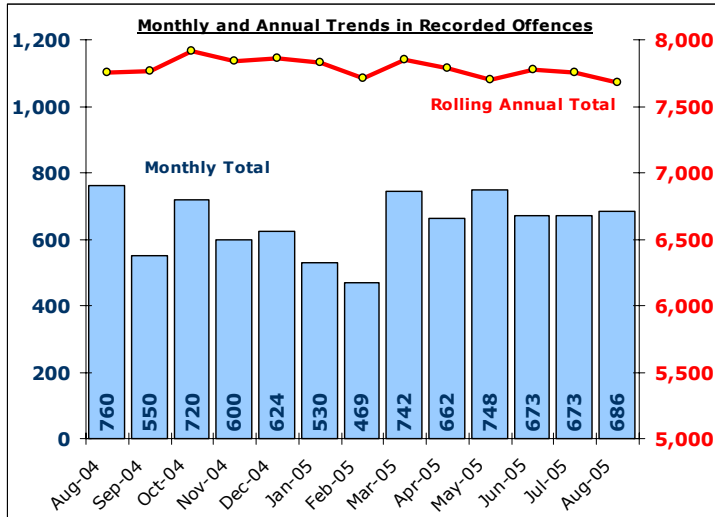
Benchmark MSF - Sanction Detections per Crime-Dyfed Powys-Vehicle Crime (including Vehicle Interference) 01 Aug 2004 - 31 Jul 2005

# Total Criminal Damage

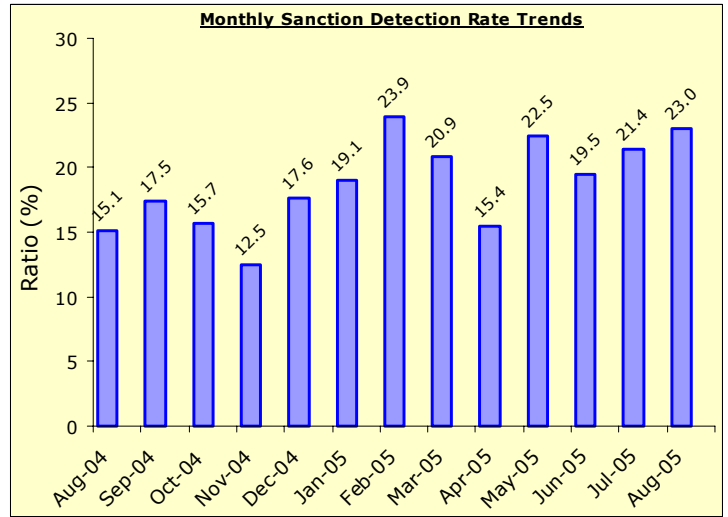
EXCLUDES ARSON % THREAT TO COMMIT CRIMINAL DAMAGE (HOC 56 & 59)

**TARGET 2005/06 : NO TARGET**

## Recorded Crime Levels – August 2005

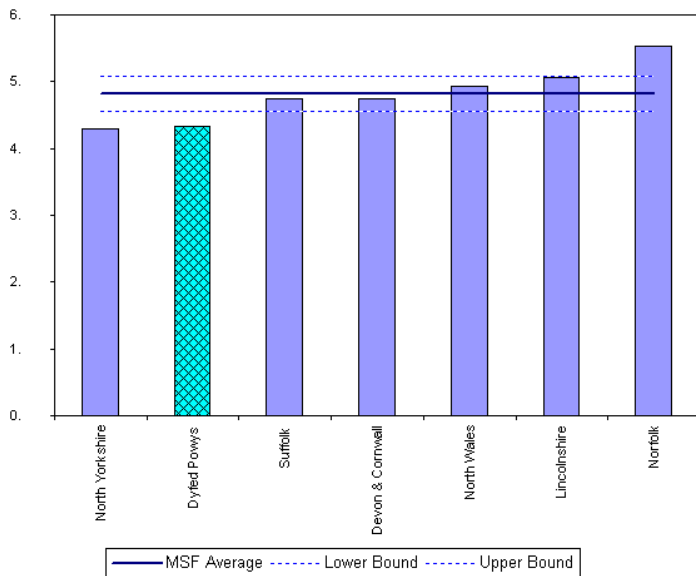


## Monthly Sanction Detection Rates – August 2005

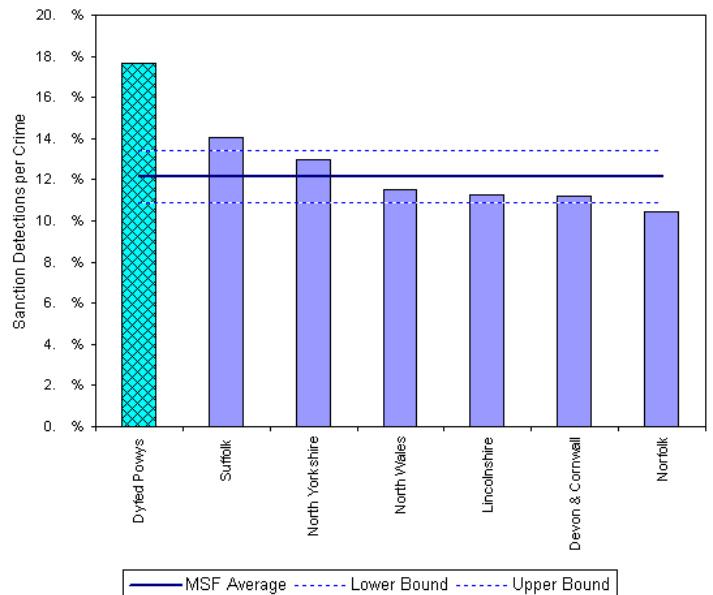


Total Criminal Damage: August 2005 YTD	August 2005 YTD			Detection Rates YTD		Annual Trends - SPLY		
	Crimes	Sanction Dets	Total Dets	Sanction %	Total %	Crimes SPLY	Change	% Change
<b>FORCE</b>	<b>3,442</b>	<b>703</b>	<b>873</b>	<b>20.4%</b>	<b>25.4%</b>	<b>3,616</b>	<b>- 174</b>	<b>- 4.8%</b>
<b>CARMS</b>	<b>1,187</b>	<b>214</b>	<b>269</b>	<b>18.0%</b>	<b>22.7%</b>	<b>1,373</b>	<b>- 186</b>	<b>- 13.5%</b>
<b>CERED</b>	<b>483</b>	<b>86</b>	<b>104</b>	<b>17.8%</b>	<b>21.5%</b>	<b>430</b>	<b>+ 53</b>	<b>+ 12.3%</b>
<b>PEMBS</b>	<b>1,011</b>	<b>227</b>	<b>285</b>	<b>22.5%</b>	<b>28.2%</b>	<b>1,035</b>	<b>- 24</b>	<b>- 2.3%</b>
<b>POWYS</b>	<b>761</b>	<b>176</b>	<b>215</b>	<b>23.1%</b>	<b>28.3%</b>	<b>778</b>	<b>- 17</b>	<b>- 2.2%</b>

## MSF – Crimes per 1000 Residents 01 May 2005 – 31 July 2005



## MSF – Sanction detections (annual): 01 August 2004 – 31 July 2005

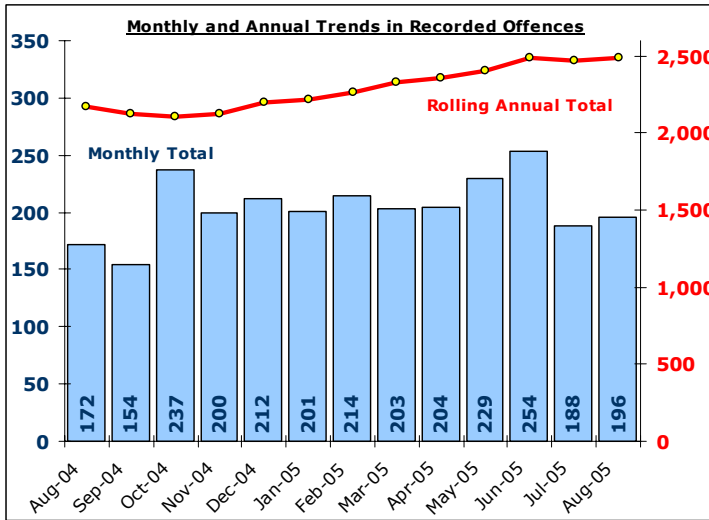


# Total Drug Offences

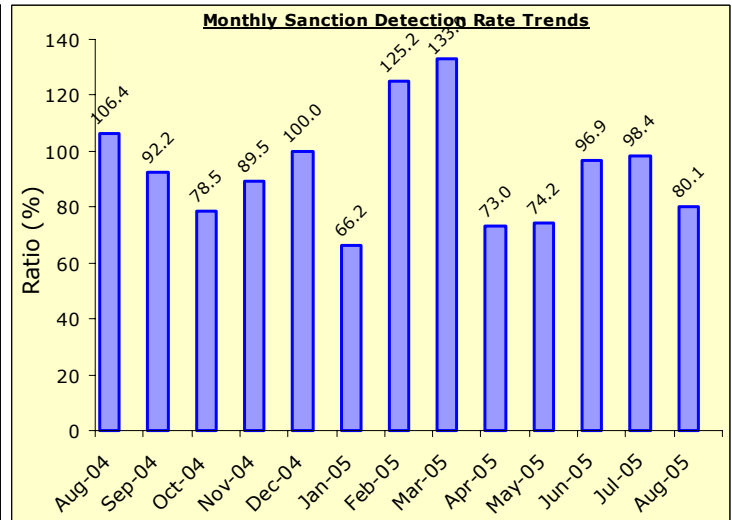
DYFED-POWYS POLICE

**TARGET 2005/06 : NO TARGET**

## Recorded Crime Levels – August 2005

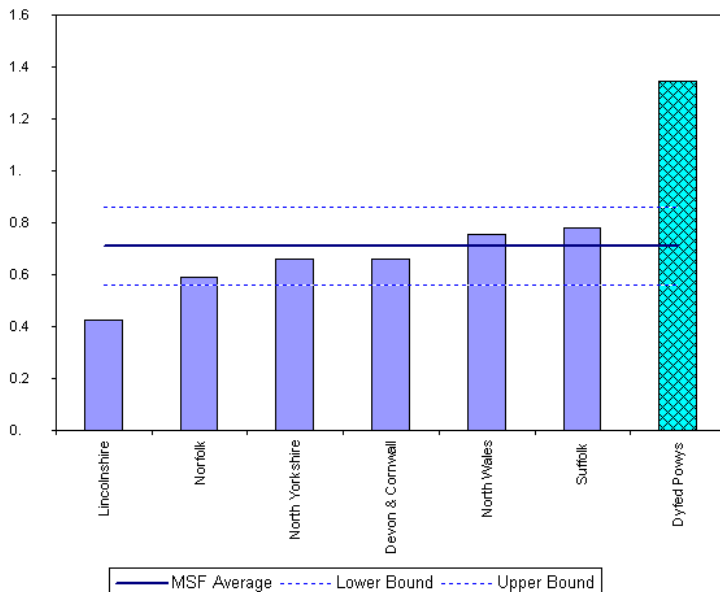


## Monthly Sanction Detection Rates – August 2005

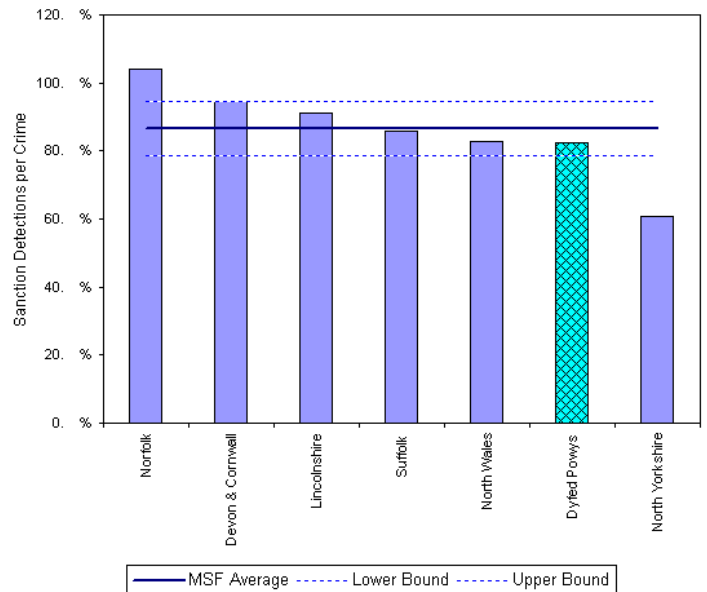


Total Drug Offences: August 2005 YTD	August 2005 YTD			Detection Rates YTD		Annual Trends - SPLY		
	Crimes	Sanction Dets	Total Dets	Sanction %	Total %	Crimes SPLY	Change	% Change
<b>FORCE</b>	1,071	907	975	84.7%	91.0%	906	+ 165	+ 18.2%
<b>CARMS</b>	433	380	424	87.8%	97.9%	326	+ 107	+ 32.8%
<b>CERED</b>	207	185	190	89.4%	91.8%	175	+ 32	+ 18.3%
<b>PEMBS</b>	266	207	221	77.8%	83.1%	235	+ 31	+ 13.2%
<b>POWYS</b>	165	135	140	81.8%	84.8%	170	- 5	- 2.9%

## MSF – Crimes per 1000 Residents 01 May 2005 – 31 July 2005



## MSF – Sanction detections (annual): 01 August 2004 – 31 July 2005



Bar chart MSF - Sanction Detections per Crime-Dyfed Powys-Drug Offences-01 Aug 2004 - 31 Jul 2005

# Section Level Sanction Detection Summary

DYFED-POWYS POLICE

**TARGET 2005/06 : 31% SANCTION DETECTION RATE**

## Sanction Detections Performance Aug 05 YTD: Total Recorded Crimes

Sanction Detection Rate	Recorded	Detected	Det Ratio	Recorded	Diff	% Change
<b>THE FORCE</b>	<b>13,960</b>	<b>4,932</b>	<b>35.3%</b>	<b>14,741</b>	<b>- 781</b>	<b>- 5.3%</b>
<b>Carmarthenshire</b>	<b>5,005</b>	<b>1,743</b>	<b>34.8%</b>	<b>5,740</b>	<b>- 735</b>	<b>- 12.8%</b>
Ammanford (AA)	658	286	43.5%	667	- 9	- 1.3%
Carmarthen (AC)	1,199	489	40.8%	1,373	- 174	- 12.7%
Llanelli (AL)	2,463	740	30.0%	2,983	- 520	- 17.4%
Towy Gwendraeth (AT)	685	228	33.3%	717	- 32	- 4.5%
<b>Ceredigion</b>	<b>1,965</b>	<b>725</b>	<b>36.9%</b>	<b>2,035</b>	<b>- 70</b>	<b>- 3.4%</b>
Aberystwyth (BA)	1,029	406	39.5%	1,004	+ 25	+ 2.5%
Aberaeron (BB)	216	72	33.3%	278	- 62	- 22.3%
Cardigan (BC)	480	161	33.5%	497	- 17	- 3.4%
Lampeter (BL)	240	86	35.8%	256	- 16	- 6.3%
<b>Pembrokeshire</b>	<b>3,572</b>	<b>1,224</b>	<b>34.3%</b>	<b>3,790</b>	<b>- 218</b>	<b>- 5.8%</b>
Fishguard (CF)	388	123	31.7%	462	- 74	- 16.0%
Haverfordwest (CH)	842	274	32.5%	1,018	- 176	- 17.3%
Milford Haven (CM)	685	264	38.5%	765	- 80	- 10.5%
Pembroke Dock (CP)	951	348	36.6%	765	+ 186	+ 24.3%
Tenby (CT)	706	215	30.5%	780	- 74	- 9.5%
<b>Powys</b>	<b>3,418</b>	<b>1,240</b>	<b>36.3%</b>	<b>3,176</b>	<b>+ 242</b>	<b>+ 7.6%</b>
Brecon (DB)	881	291	33.0%	730	+ 151	+ 20.7%
Llandrindod Wells (DL)	624	244	39.1%	631	- 7	- 1.1%
Newtown (DN)	1,071	367	34.3%	854	+ 217	+ 25.4%
Welshpool (DW)	581	240	41.3%	656	- 75	- 11.4%
Ystradgynlais (DY)	261	98	37.5%	305	- 44	- 14.4%

## Sanction Detection Performance Aug 05 YTD: Domestic Burglary, Violent Crime & Vehicle Crime

Sanction Detections	Total Domestic Burglary			Total Violent Crime			Total Vehicle Crime		
	Recorded	Detected	Det Ratio	Recorded	Detected	Det Ratio	Recorded	Detected	Det Ratio
<b>THE FORCE</b>	<b>347</b>	<b>90</b>	<b>25.9%</b>	<b>3,829</b>	<b>1,808</b>	<b>47.2%</b>	<b>852</b>	<b>110</b>	<b>12.9%</b>
<b>Carmarthenshire</b>	<b>141</b>	<b>35</b>	<b>24.8%</b>	<b>1,307</b>	<b>592</b>	<b>45.3%</b>	<b>356</b>	<b>36</b>	<b>10.1%</b>
Ammanford (AA)	13	8	61.5%	128	57	44.5%	41	7	17.1%
Carmarthen (AC)	20	7	35.0%	347	185	53.3%	58	5	8.6%
Llanelli (AL)	80	9	11.3%	669	263	39.3%	213	19	8.9%
Towy Gwendraeth (AT)	28	11	39.3%	163	87	53.4%	44	5	11.4%
<b>Ceredigion</b>	<b>35</b>	<b>7</b>	<b>20.0%</b>	<b>521</b>	<b>253</b>	<b>48.6%</b>	<b>92</b>	<b>18</b>	<b>19.6%</b>
Aberystwyth (BA)	23	5	21.7%	284	156	54.9%	43	7	16.3%
Aberaeron (BB)	1	1	100.0%	54	24	44.4%	12	1	8.3%
Cardigan (BC)	8	0	0.0%	119	49	41.2%	22	5	22.7%
Lampeter (BL)	3	1	33.3%	64	24	37.5%	15	5	33.3%
<b>Pembrokeshire</b>	<b>88</b>	<b>25</b>	<b>28.4%</b>	<b>905</b>	<b>421</b>	<b>46.5%</b>	<b>215</b>	<b>29</b>	<b>13.5%</b>
Fishguard (CF)	9	3	33.3%	96	40	41.7%	30	2	6.7%
Haverfordwest (CH)	29	6	20.7%	255	103	40.4%	28	3	10.7%
Milford Haven (CM)	20	8	40.0%	201	97	48.3%	31	7	22.6%
Pembroke Dock (CP)	18	4	22.2%	203	91	44.8%	53	5	9.4%
Tenby (CT)	12	4	33.3%	150	90	60.0%	73	12	16.4%
<b>Powys</b>	<b>83</b>	<b>23</b>	<b>27.7%</b>	<b>1,096</b>	<b>542</b>	<b>49.5%</b>	<b>189</b>	<b>27</b>	<b>14.3%</b>
Brecon (DB)	12	2	16.7%	262	140	53.4%	58	2	3.4%
Llandrindod Wells (DL)	20	8	40.0%	210	117	55.7%	29	4	13.8%
Newtown (DN)	35	10	28.6%	371	152	41.0%	48	8	16.7%
Welshpool (DW)	13	3	23.1%	171	97	56.7%	33	9	27.3%
Ystradgynlais (DY)	3	0	0.0%	82	36	43.9%	21	4	19.0%

# Target Contribution Summary - Carmarthenshire

DYFED-POWYS POLICE

**GREEN/RED** indicates current performance **consistent** or **not consistent** with force target reduction & detection rate

CARMARTHENSHIRE		April-August YTD		Last Year		Indicator
<b>CRIME</b>	Performance	Indicator	Performance	Indicator	Change & Detection	
Total Crime Recorded (per 1,000 population)	5005	29.0	5741	33.2	-12.8%	
Detection (% rate)	2040	40.8%	2206	38.4%	40.8%	
Burglary Dwelling (per 1,000 households)	141	1.9	219	3.0	-35.6%	
Detection (% rate)	35	24.8%	47	21.5%	24.8%	
Total Violent Crime (per 1,000 population)	1307	7.6	1560	9.0	-16.2%	
Detection (% rate)	757	57.9%	889	57.0%	57.9%	
Autocrime per (1,000 population)	356	2.1	429	2.5	-17.0%	
Detection (% rate)	41	11.5%	88	20.5%	11.5%	
Ammanford		April-August YTD		Last Year		Indicator
<b>CRIME</b>	Performance	Indicator	Performance	Indicator	Change & Detection	
Total Crime Recorded (per 1,000 population)	658	20.1	667	20.4	-1.3%	
Detection (% rate)	319	48.5%	329	49.3%	48.5%	
Burglary Dwelling (per 1,000 households)	13	0.9	20	1.4	-35.0%	
Detection (% rate)	8	61.5%	7	35.0%	61.5%	
Total Violent Crime (per 1,000 population)	128	3.9	168	5.1	-23.8%	
Detection (% rate)	71	55.5%	111	66.1%	55.5%	
Autocrime per (1,000 population)	41	1.3	36	1.1	13.9%	
Detection (% rate)	8	19.5%	5	13.9%	19.5%	
Carmarthen		April-August YTD		Last Year		Indicator
<b>CRIME</b>	Performance	Indicator	Performance	Indicator	Change & Detection	
Total Crime Recorded (per 1,000 population)	1199	24.2	1373	27.8	-12.7%	
Detection (% rate)	551	46.0%	599	43.6%	46.0%	
Burglary Dwelling (per 1,000 households)	20	1.0	32	1.5	-37.5%	
Detection (% rate)	7	35.0%	4	12.5%	35.0%	
Total Violent Crime (per 1,000 population)	347	7.0	399	8.1	-13.0%	
Detection (% rate)	227	65.4%	253	63.4%	65.4%	
Autocrime per (1,000 population)	58	1.2	73	1.5	-20.5%	
Detection (% rate)	5	8.6%	8	11.0%	8.6%	
Llanelli		April-August YTD		Last Year		Indicator
<b>CRIME</b>	Performance	Indicator	Performance	Indicator	Change & Detection	
Total Crime Recorded (per 1,000 population)	2463	40.7	2984	49.3	-17.5%	
Detection (% rate)	908	36.9%	996	33.4%	36.9%	
Burglary Dwelling (per 1,000 households)	80	3.1	129	4.9	-38.0%	
Detection (% rate)	9	11.3%	27	20.9%	11.3%	
Total Violent Crime (per 1,000 population)	669	11.1	802	13.3	-16.6%	
Detection (% rate)	359	53.7%	414	51.6%	53.7%	
Autocrime per (1,000 population)	213	3.5	263	4.3	-19.0%	
Detection (% rate)	22	10.3%	65	24.7%	10.3%	
Towy/Gwenraeth		April-August YTD		Last Year		Indicator
<b>CRIME</b>	Performance	Indicator	Performance	Indicator	Change & Detection	
Total Crime Recorded (per 1,000 population)	685	22.6	717	23.7	-4.5%	
Detection (% rate)	262	38.2%	282	39.3%	38.2%	
Burglary Dwelling (per 1,000 households)	28	2.3	38	3.1	-26.3%	
Detection (% rate)	11	39.3%	9	23.7%	39.3%	
Total Violent Crime (per 1,000 population)	163	5.4	191	6.3	-14.7%	
Detection (% rate)	100	61.3%	111	58.1%	61.3%	
Autocrime per (1,000 population)	44	1.5	57	1.9	-22.8%	
Detection (% rate)	6	13.6%	10	17.5%	13.6%	

# Target Contribution Summary - Ceredigion

DYFED-POWYS POLICE

**GREEN/RED** indicates current performance **consistent** or **not consistent** with force target reduction & detection rate

CEREDIGION		April-August YTD		Last Year		Indicator
<b>CRIME</b>	Performance	Indicator	Performance	Indicator	Change & Detection	
Total Crime Recorded (per 1,000 population)	1965	26.2	2035	27.2	-3.4%	
Detection (% rate)	853	43.4%	860	42.3%	43.4%	
Burglary Dwelling (per 1,000 households)	35	1.1	54	1.7	-35.2%	
Detection (% rate)	7	20.0%	12	22.2%	20.0%	
Total Violent Crime (per 1,000 population)	521	7.0	602	8.0	-13.5%	
Detection (% rate)	333	63.9%	296	49.2%	63.9%	
Autocrime per (1,000 population)	92	1.2	103	1.4	-10.7%	
Detection (% rate)	19	20.7%	18	17.5%	20.7%	
Ceredigion North		April-August YTD		Last Year		Indicator
<b>CRIME</b>	Performance	Indicator	Performance	Indicator	Change & Detection	
Total Crime Recorded (per 1,000 population)	1029	32.4	1003	31.5	2.6%	
Detection (% rate)	446	43.3%	488	48.7%	43.3%	
Burglary Dwelling (per 1,000 households)	23	1.8	18	1.4	27.8%	
Detection (% rate)	5	21.7%	6	33.3%	21.7%	
Total Violent Crime (per 1,000 population)	284	8.9	288	9.1	-1.4%	
Detection (% rate)	183	64.4%	156	54.2%	64.4%	
Autocrime per (1,000 population)	43	1.4	42	1.3	2.4%	
Detection (% rate)	7	16.3%	6	14.3%	16.3%	
Ceredigion South		April-August YTD		Last Year		Indicator
<b>CRIME</b>	Performance	Indicator	Performance	Indicator	Change & Detection	
Total Crime Recorded (per 1,000 population)	936	21.8	1032	24.0	-9.3%	
Detection (% rate)	407	43.5%	372	36.0%	43.5%	
Burglary Dwelling (per 1,000 households)	12	0.6	36	1.9	-66.7%	
Detection (% rate)	2	16.7%	6	16.7%	16.7%	
Total Violent Crime (per 1,000 population)	237	5.5	314	7.3	-24.5%	
Detection (% rate)	150	63.3%	140	44.6%	63.3%	
Autocrime per (1,000 population)	49	1.1	61	1.4	-19.7%	
Detection (% rate)	12	24.5%	12	19.7%	24.5%	

Ceredigion South is an area used for comparison purposes only. It incorporates the three section areas of Lampeter/Aberaeron and Cardigan. Details on these three discrete areas is also included here for information.

Aberaeron		April-August YTD		Last Year		Indicator
<b>CRIME</b>	Performance	Indicator	Performance	Indicator	Change & Detection	
Total Crime Recorded (per 1,000 population)	216	17.0	278	21.9	-22.3%	
Detection (% rate)	84	38.9%	95	34.2%	38.9%	
Burglary Dwelling (per 1,000 households)	1	0.2	12	2.2	-91.7%	
Detection (% rate)	1	100.0%	3	25.0%	100.0%	
Total Violent Crime (per 1,000 population)	54	4.3	80	6.3	-32.5%	
Detection (% rate)	26	48.1%	38	47.5%	48.1%	
Autocrime per (1,000 population)	12	0.9	15	1.2	-20.0%	
Detection (% rate)	2	16.7%	4	26.7%	16.7%	
Cardigan		April-August YTD		Last Year		Indicator
<b>CRIME</b>	Performance	Indicator	Performance	Indicator	Change & Detection	
Total Crime Recorded (per 1,000 population)	480	25.4	497	26.3	-3.4%	
Detection (% rate)	207	43.1%	194	39.0%	43.1%	
Burglary Dwelling (per 1,000 households)	8	1.0	10	1.2	-20.0%	
Detection (% rate)	0	0.0%	2	20.0%	0.0%	
Total Violent Crime (per 1,000 population)	119	6.3	152	8.1	-21.7%	
Detection (% rate)	80	67.2%	73	48.0%	67.2%	
Autocrime per (1,000 population)	22	1.2	29	1.5	-24.1%	
Detection (% rate)	5	22.7%	5	17.2%	22.7%	
Lampeter		April-August YTD		Last Year		Indicator
<b>CRIME</b>	Performance	Indicator	Performance	Indicator	Change & Detection	
Total Crime Recorded (per 1,000 population)	240	20.7	257	22.2	-6.6%	
Detection (% rate)	116	48.3%	83	32.3%	48.3%	
Burglary Dwelling (per 1,000 households)	3	0.6	14	2.9	-78.6%	
Detection (% rate)	1	33.3%	1	7.1%	33.3%	
Total Violent Crime (per 1,000 population)	64	5.5	82	7.1	-22.0%	
Detection (% rate)	44	68.8%	29	35.4%	68.8%	
Autocrime per (1,000 population)	15	1.3	17	1.5	-11.8%	
Detection (% rate)	5	33.3%	3	17.6%	33.3%	

# Target Contribution Summary - Pembrokeshire

DYFED-POWYS POLICE

**GREEN/RED** indicates current performance **consistent** or **not consistent** with force target reduction & total detection rate

PEMBROKESHIRE		April-August YTD		Last Year		Indicator
<b>CRIME</b>	Performance	Indicator	Performance	Indicator	Change & Detection	
Total Crime Recorded (per 1,000 population)	3572	31.3	3791	33.2	-5.8%	
Detection (% rate)	1490	41.7%	1516	40.0%	41.7%	
Burglary Dwelling (per 1,000 households)	88	1.8	119	2.5	-26.1%	
Detection (% rate)	28	31.8%	34	28.6%	31.8%	
Total Violent Crime (per 1,000 population)	905	7.9	1041	9.1	-13.1%	
Detection (% rate)	577	63.8%	644	61.9%	63.8%	
Autocrime per (1,000 population)	215	1.9	316	2.8	-32.0%	
Detection (% rate)	34	15.8%	59	18.7%	15.8%	
Fishguard		April-August YTD		Last Year		Indicator
<b>CRIME</b>	Performance	Indicator	Performance	Indicator	Change & Detection	
Total Crime Recorded (per 1,000 population)	388	14.7	462	17.4	-16.0%	
Detection (% rate)	173	44.6%	187	40.5%	44.6%	
Burglary Dwelling (per 1,000 households)	9	0.8	17	1.5	-47.1%	
Detection (% rate)	4	44.4%	4	23.5%	44.4%	
Total Violent Crime (per 1,000 population)	96	3.6	108	4.1	-11.1%	
Detection (% rate)	70	72.9%	77	71.3%	72.9%	
Autocrime per (1,000 population)	30	1.1	42	1.6	-28.6%	
Detection (% rate)	4	13.3%	11	26.2%	13.3%	
Haverfordwest		April-August YTD		Last Year		Indicator
<b>CRIME</b>	Performance	Indicator	Performance	Indicator	Change & Detection	
Total Crime Recorded (per 1,000 population)	842	42.1	1018	50.9	-17.3%	
Detection (% rate)	347	41.2%	435	42.7%	41.2%	
Burglary Dwelling (per 1,000 households)	29	3.4	40	4.7	-27.5%	
Detection (% rate)	7	24.1%	8	20.0%	24.1%	
Total Violent Crime (per 1,000 population)	255	12.8	315	15.8	-19.0%	
Detection (% rate)	150	58.8%	194	61.6%	58.8%	
Autocrime per (1,000 population)	28	1.4	72	3.6	-61.1%	
Detection (% rate)	3	10.7%	13	18.1%	10.7%	
Milford Haven		April-August YTD		Last Year		Indicator
<b>CRIME</b>	Performance	Indicator	Performance	Indicator	Change & Detection	
Total Crime Recorded (per 1,000 population)	685	28.1	765	31.4	-10.5%	
Detection (% rate)	312	45.5%	331	43.3%	45.5%	
Burglary Dwelling (per 1,000 households)	20	2.0	19	1.9	5.3%	
Detection (% rate)	10	50.0%	9	47.4%	50.0%	
Total Violent Crime (per 1,000 population)	201	8.2	195	8.0	3.1%	
Detection (% rate)	129	64.2%	128	65.6%	64.2%	
Autocrime per (1,000 population)	31	1.3	54	2.2	-42.6%	
Detection (% rate)	10	32.3%	19	35.2%	32.3%	
Pembroke Dock		April-August YTD		Last Year		Indicator
<b>CRIME</b>	Performance	Indicator	Performance	Indicator	Change & Detection	
Total Crime Recorded (per 1,000 population)	951	49.8	765	40.0	24.3%	
Detection (% rate)	423	44.5%	281	36.7%	44.5%	
Burglary Dwelling (per 1,000 households)	18	2.2	21	2.6	-14.3%	
Detection (% rate)	4	22.2%	6	28.6%	22.2%	
Total Violent Crime (per 1,000 population)	203	10.6	214	11.2	-5.1%	
Detection (% rate)	127	62.6%	115	53.7%	62.6%	
Autocrime per (1,000 population)	53	2.8	85	4.4	-37.6%	
Detection (% rate)	5	9.4%	7	8.2%	9.4%	
Tenby		April-August YTD		Last Year		Indicator
<b>CRIME</b>	Performance	Indicator	Performance	Indicator	Change & Detection	
Total Crime Recorded (per 1,000 population)	706	29.2	781	32.3	-9.6%	
Detection (% rate)	235	33.3%	282	36.1%	33.3%	
Burglary Dwelling (per 1,000 households)	12	1.2	22	2.1	-45.5%	
Detection (% rate)	4	33.3%	7	31.8%	33.3%	
Total Violent Crime (per 1,000 population)	150	6.2	209	8.7	-28.2%	
Detection (% rate)	101	67.3%	130	62.2%	67.3%	
Autocrime per (1,000 population)	73	3.0	63	2.6	15.9%	
Detection (% rate)	12	16.4%	9	14.3%	16.4%	

# Target Contribution Summary - Powys

DYFED-POWYS POLICE

**GREEN/RED** indicates current performance **consistent** or **not consistent** with force target reduction & detection rate

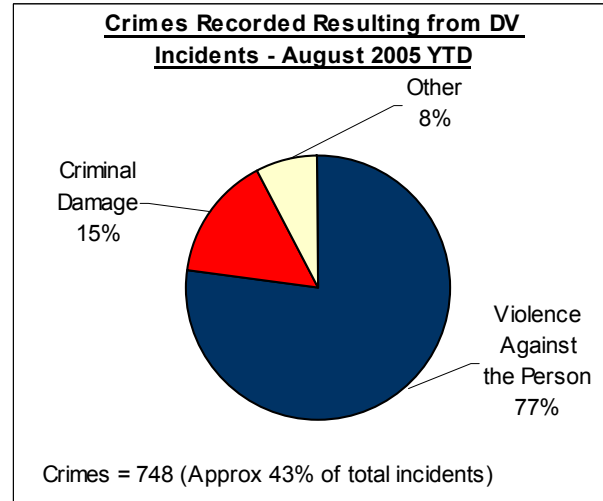
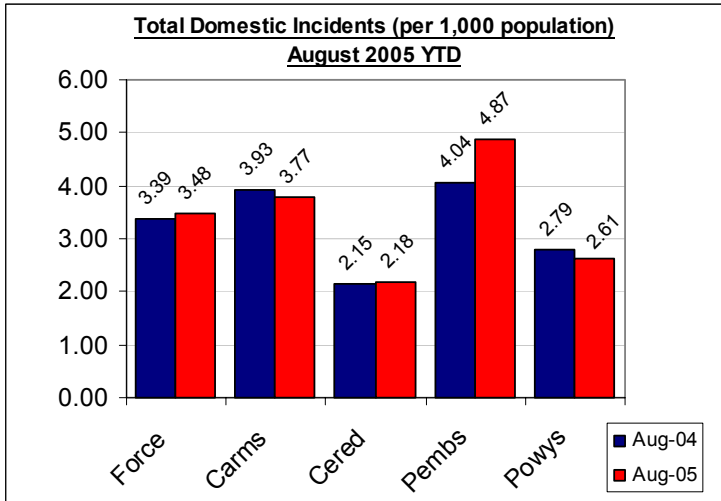
POWYS		April-August YTD		Last Year		Indicator
<b>CRIME</b>	Performance	Indicator	Performance	Indicator	Change & Detection	
Total Crime Recorded (per 1,000 population)	3418	27.1	3176	25.1	7.6%	
Detection (% rate)	1385	40.5%	1208	38.0%	40.5%	
Burglary Dwelling (per 1,000 households)	83	1.5	94	1.7	-11.7%	
Detection (% rate)	23	27.7%	23	24.5%	27.7%	
Total Violent Crime (per 1,000 population)	1096	8.7	899	7.1	21.9%	
Detection (% rate)	627	57.2%	518	57.6%	57.2%	
Autocrime per (1,000 population)	189	1.5	232	1.8	-18.5%	
Detection (% rate)	31	16.4%	33	14.2%	16.4%	
Brecon		April-August YTD		Last Year		Indicator
<b>CRIME</b>	Performance	Indicator	Performance	Indicator	Change & Detection	
Total Crime Recorded (per 1,000 population)	881	34.4	730	28.5	20.7%	
Detection (% rate)	328	37.2%	274	37.5%	37.2%	
Burglary Dwelling (per 1,000 households)	12	1.1	15	1.4	-20.0%	
Detection (% rate)	2	16.7%	5	33.3%	16.7%	
Total Violent Crime (per 1,000 population)	262	10.2	214	8.4	22.4%	
Detection (% rate)	162	61.8%	124	57.9%	61.8%	
Autocrime per (1,000 population)	58	2.3	47	1.8	23.4%	
Detection (% rate)	2	3.4%	5	10.6%	3.4%	
Llandrindod Wells		April-August YTD		Last Year		Indicator
<b>CRIME</b>	Performance	Indicator	Performance	Indicator	Change & Detection	
Total Crime Recorded (per 1,000 population)	624	22.1	631	22.4	-1.1%	
Detection (% rate)	278	44.6%	285	45.2%	44.6%	
Burglary Dwelling (per 1,000 households)	20	1.6	27	2.2	-25.9%	
Detection (% rate)	8	40.0%	5	18.5%	40.0%	
Total Violent Crime (per 1,000 population)	210	7.4	180	6.4	16.7%	
Detection (% rate)	136	64.8%	119	66.1%	64.8%	
Autocrime per (1,000 population)	29	1.0	46	1.6	-37.0%	
Detection (% rate)	6	20.7%	6	13.0%	20.7%	
Newtown		April-August YTD		Last Year		Indicator
<b>CRIME</b>	Performance	Indicator	Performance	Indicator	Change & Detection	
Total Crime Recorded (per 1,000 population)	1071	30.5	854	24.3	25.4%	
Detection (% rate)	403	37.6%	280	32.8%	37.6%	
Burglary Dwelling (per 1,000 households)	35	2.3	35	2.3	0.0%	
Detection (% rate)	10	28.6%	6	17.1%	28.6%	
Total Violent Crime (per 1,000 population)	371	10.6	236	6.7	57.2%	
Detection (% rate)	176	47.4%	135	57.2%	47.4%	
Autocrime per (1,000 population)	48	1.4	47	1.3	2.1%	
Detection (% rate)	8	16.7%	14	29.8%	16.7%	
Welshpool		April-August YTD		Last Year		Indicator
<b>CRIME</b>	Performance	Indicator	Performance	Indicator	Change & Detection	
Total Crime Recorded (per 1,000 population)	581	22.7	656	25.7	-11.4%	
Detection (% rate)	260	44.8%	242	36.9%	44.8%	
Burglary Dwelling (per 1,000 households)	13	1.2	13	1.2	0.0%	
Detection (% rate)	3	23.1%	3	23.1%	23.1%	
Total Violent Crime (per 1,000 population)	171	6.7	187	7.3	-8.6%	
Detection (% rate)	109	63.7%	92	49.2%	63.7%	
Autocrime per (1,000 population)	33	1.3	59	2.3	-44.1%	
Detection (% rate)	11	33.3%	2	3.4%	33.3%	
Ystradgynlais		April-August YTD		Last Year		Indicator
<b>CRIME</b>	Performance	Indicator	Performance	Indicator	Change & Detection	
Total Crime Recorded (per 1,000 population)	261	22.0	305	25.7	-14.4%	
Detection (% rate)	116	44.4%	127	41.6%	44.4%	
Burglary Dwelling (per 1,000 households)	3	0.6	4	0.8	-25.0%	
Detection (% rate)	0	0.0%	4	100.0%	0.0%	
Total Violent Crime (per 1,000 population)	82	6.9	82	6.9	0.0%	
Detection (% rate)	44	53.7%	48	58.5%	53.7%	
Autocrime per (1,000 population)	21	1.8	33	2.8	-36.4%	
Detection (% rate)	4	19.0%	6	18.2%	19.0%	

# Domestic Incidents

DYFED POWYS POLICE

**SPI 9A TARGET - 80% OF INCIDENTS (WITH A POWER OF ARREST) LEADING TO ARREST**  
**LOCAL TARGET - 30% OF TOTAL INCIDENTS INVOLVING REPEAT VICTIMS**

Please note figures provided here are provisional only. For the latest detailed information please contact your local Public Protection Unit (PPU) for further details.



## Section & Divisional Summary – August 2005 YTD

Section	Incidents		Arrests		Sanction Detections			Repeat Victims (12mnts data)	Apr-August 2004 (SPLY)	
	Total Incidents	Power Of Arrest	Arrests where POA	% POA	Crimes	Sanction Detections	% Sanction Detection		Total Incidents	Annual % Change
Ammanford (AA)	76	26	18	69.2%	25	11	44.0%	16.5%	128	-40.6%
Carmarthen (AC)	135	61	48	78.7%	60	30	50.0%	21.5%	127	6.3%
Llanelli (AL)	357	154	111	72.1%	169	59	34.9%	24.2%	330	8.2%
Towy Gwendraeth (AT)	95	36	22	61.1%	33	20	60.6%	20.2%	107	-11.2%
<b>Carmarthenshire</b>	<b>663</b>	<b>277</b>	<b>199</b>	<b>71.8%</b>	<b>287</b>	<b>120</b>	<b>41.8%</b>	<b>22.0%</b>	<b>692</b>	<b>-4.2%</b>
Aberystwyth (BA)	99	54	46	85.2%	42	22	52.4%	14.5%	81	22.2%
Aberaeron (BB)	14	9	6	66.7%	7	5	71.4%	19.4%	27	-48.1%
Cardigan (BC)	36	18	12	66.7%	22	7	31.8%	12.1%	44	-18.2%
Lampeter (BL)	19	8	7	87.5%	10	2	20.0%	3.1%	14	35.7%
<b>Ceredigion</b>	<b>168</b>	<b>89</b>	<b>71</b>	<b>79.8%</b>	<b>81</b>	<b>36</b>	<b>44.4%</b>	<b>13.2%</b>	<b>166</b>	<b>1.2%</b>
Fishguard (CF)	76	29	24	82.8%	29	13	44.8%	27.3%	59	28.8%
Haverfordwest (CH)	129	51	40	78.4%	54	10	18.5%	32.4%	115	12.2%
Milford Haven (CM)	141	53	39	73.6%	49	24	49.0%	31.4%	104	35.6%
Pembroke Dock (CP)	135	65	52	80.0%	49	16	32.7%	33.3%	132	2.3%
Tenby (CT)	85	36	30	83.3%	31	15	48.4%	23.3%	60	41.7%
<b>Pembrokeshire</b>	<b>566</b>	<b>234</b>	<b>185</b>	<b>79.1%</b>	<b>212</b>	<b>78</b>	<b>36.8%</b>	<b>30.5%</b>	<b>470</b>	<b>20.4%</b>
Brecon (DB)	68	31	33	106.5%	33	11	33.3%	15.1%	91	-25.3%
Llandrindod Wells (DL)	58	20	18	90.0%	27	8	29.6%	18.6%	58	0.0%
Newtown (DN)	111	53	50	94.3%	56	19	33.9%	22.5%	90	23.3%
Welshpool (DW)	56	21	21	100.0%	29	10	34.5%	25.9%	76	-26.3%
Ystradgynlais (DY)	45	21	20	95.2%	23	13	56.5%	28.4%	45	0.0%
<b>Powys</b>	<b>338</b>	<b>146</b>	<b>142</b>	<b>97.3%</b>	<b>168</b>	<b>61</b>	<b>36.3%</b>	<b>21.5%</b>	<b>360</b>	<b>-6.1%</b>
<b>Force</b>	<b>1735</b>	<b>746</b>	<b>597</b>	<b>80.0%</b>	<b>748</b>	<b>295</b>	<b>39.4%</b>	<b>23.8%</b>	<b>1688</b>	<b>2.8%</b>

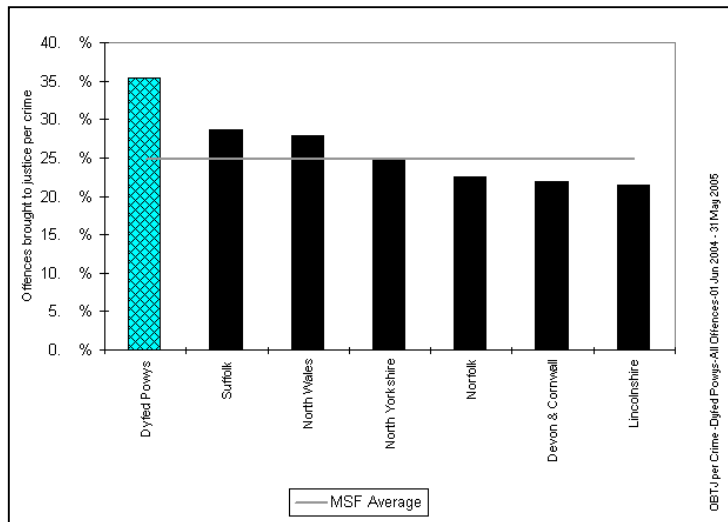
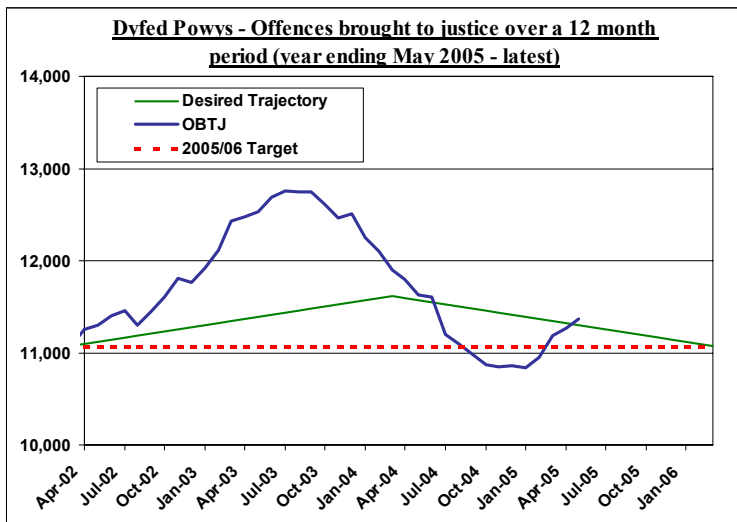
Source: LCS Recorded Domestic Incident Details (extracted 07/09/05 & 13/09/04 - SPLY)

NB – Repeat Victims performance is based on 12-months incident data and not only a snapshot of year to date performance.

# Narrowing the Justice Gap - OFFENCES BROUGHT TO JUSTICE & SANCTION DETECTIONS

**TARGET 2005/06 : 11,068 total OBTJ (Offences Brought to Justice)**

## Total Offences Brought to Justice (OBTJ) – Force & MSF Comparisons



Offences brought to justice – 12 monthly data	TIC	PND	Formal Warnings	Cautions	Convictions	OBTJ
Baseline: Apr 01 – Mar 02	420	-	-	3,698	6,900	11,068
Latest: June 04 – May 05	505	477	904	3,572	5,907	11,365
Change	+20%	-	-	-3%	-14%	+3%
<b>2005/06 Force Target (0%- 11,068 OBTJ)</b>	<b>YES</b>	<b>n/a</b>	<b>YES</b>	<b>NO</b>	<b>NO</b>	<b>YES</b>

## Divisional Contribution Toward OBTJ Volumes – Approximate Latest

Please note this data is provided as a guide only - it is provided here for information only.

Approx OBTJ YTD	May-05	Target**	Diff from Target
Carmarthenshire	716	663	8.0%
Ceredigion	304	289	5.1%
Pembrokeshire	563	490	14.8%
Powys	424	403	5.2%
Force	2006	1845	8.7%

\*\* - Target profile required to attain the end of year target of 11,068 OBTJ. (Approximate divisional distribution is based on 2004/05 contributions toward total force sanction detections).

## Sanction Detection Volume Performance YTD – Current Clear-Up Breakdown (Annual % Change)

The current volume of sanction detections (August 05 YTD) is up 15% on the same period last year to stand at 4,932 (up 640 from 4,282).

Area – August YTD	Charged	Summons	Cautioned	TIC	PND	F. Warning for Cannabis*	Total Sanction Dets
Carmarthenshire	847 (-3%)	20 (-49%)	532 (+15%)	46 (-30%)	114 (15 sply)	184 (+31%)	1743 (+9%)
Ceredigion	358 (+/- 0%)	20 (-17%)	263 (+7%)	13 (-60%)	14 (3 sply)	57 (+/- 0%)	725 (+1%)
Pembrokeshire	507 (-4%)	18 (-56%)	461 (+8%)	100 (10 sply)	74 (12 sply)	64 (-20%)	1224 (+11%)
Powys	600 (+20%)	57 (+78%)	384 (+30%)	53 (35 sply)	107 (10 sply)	39 (+77%)	1240 (+42%)
Force	2312 (+2%)	115 (-15%)	1640 (+14%)	212 (+77%)	309 (40 sply)	344 (+15%)	4932 (+15%)

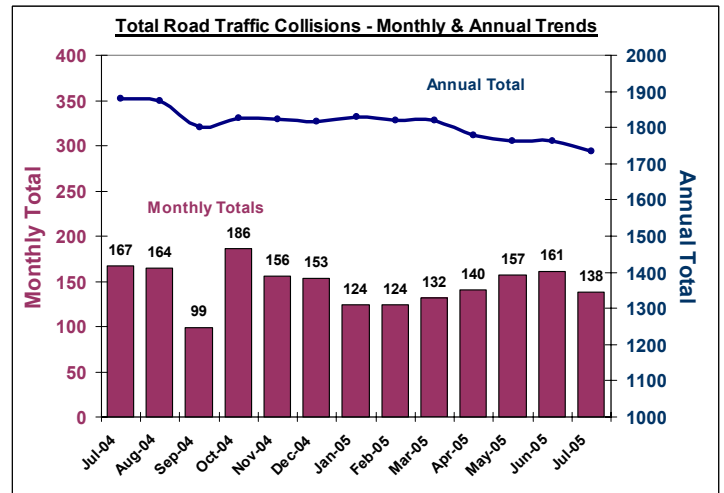
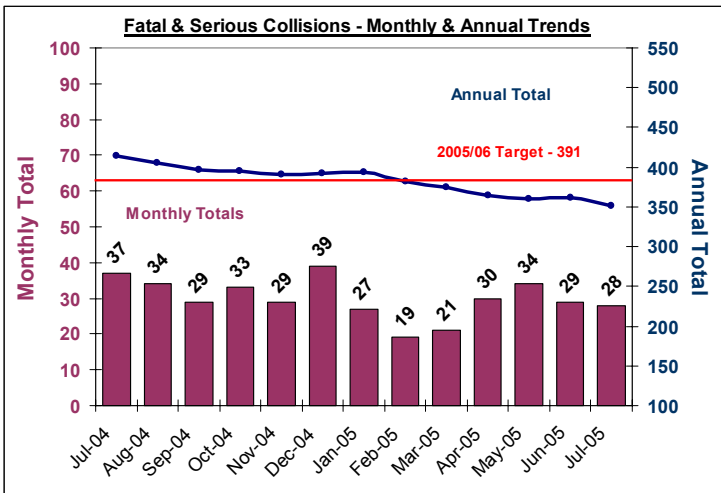
\* - SPLY Data Approximate

# Road Traffic Collisions

June Monthly Data Latest available

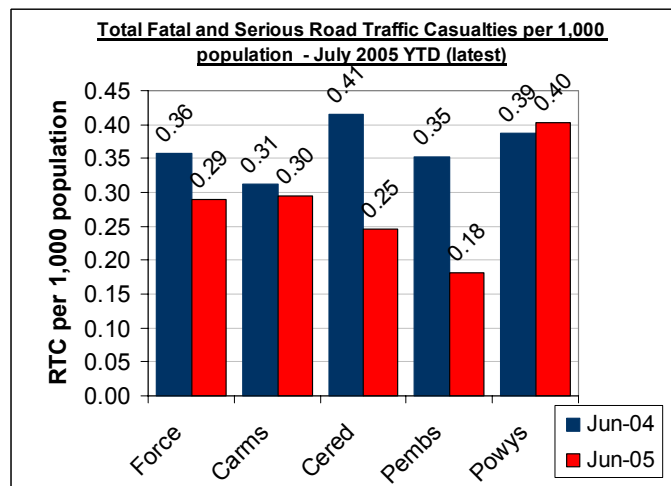
**TARGET 2005/06 : 391 FATAL AND SERIOUS COLLISIONS (0.8 PER 1,000 POPULATION)**

## Road Traffic Collisions – Monthly & Annual Trends (July 05 - latest data)



Performance YTD (July 2005 YTD - latest)	FORCE	Carms	Cered	Pembs	Powys
Fatal Road Collisions YTD	13	6	1	2	4
Serious & Fatal Road Collisions YTD	122	41	18	17	46
<b>Indicator - Per 1,000 population</b>	<b>0.24</b>	<b>0.23</b>	<b>0.23</b>	<b>0.15</b>	<b>0.36</b>
<b>On-Target (0.8 end of year – 0.27 pro-rata)</b>	<b>YES</b>	<b>YES</b>	<b>YES</b>	<b>YES</b>	<b>NO</b>
Fatal (SPLY)	17	8	1	3	5
Serious & Fatal (SPLY)	146	46	26	32	42

## Road Traffic Casualties – 2010 Target Progress



July 2005 YTD (latest)	Force	Carms	Cered	Pembs	Powys
Number of people killed or seriously injured casualties	144	52	19	21	52
At 2010 Target Level*	YES	YES	YES	YES	YES
Number of Children (<=15 yrs) killed or seriously injured	11	4	4	3	0
At 2010 Target Level*	YES	YES	YES	YES	YES
Number of persons with slight injuries	732	265	125	147	195
At 2010 Target Level*	NO	NO	NO	NO	NO

\* 2010 Targets Established with Roads Policing Strategy, Operations Dept & National Road Policing Targets. Progress towards Pro-Rata year-end 2010 target illustrated here

Source: MAAP RTC Database 08/08/05

# PPAF Statutory Performance Indicator Summary

Reported Quarterly

\* - HOME OFFICE POLICE PERFORMANCE ASSESSMENT FRAMEWORK MEASURES

This Data is Updated Quarterly – Latest: Data

Activity	SPI Number	Indicator Description	Apr-Aug 2004 Performance	Apr-Aug 2005 Performance	Change	2005/06 End of Year Target
User Satisfaction Measures	1a*	Satisfaction of victims of domestic burglary, violent crime, vehicle crime and road traffic collisions with respect to - a) making contact with the Police	91.30%	92.3%	1.0%	NEW
	1b*	b) action taken by the Police	85.40%	87.5%	2.1%	NEW
	1c*	c) Being kept informed of progress	67.80%	74.4%	6.6%	NEW
	1d*	d) Their treatment by staff	92.10%	92.5%	0.4%	NEW
	1e*	e) the overall service provided	85.20%	85.8%	0.6%	NEW
Confidence	2a	Using the BCS, the % of people who think their local police do a good job	NEW	NEW	-	NEW
Fairness and Equality Measures	3a*	Satisfaction of victims of racist incidents with respect to the overall service provided	89%	66.7%	-22.2%	NEW
	3b*	From SPI 1(e), comparison of satisfaction for white users and users from visible minority ethnic groups with respect to the overall service provided.	NEW	NEW	NEW	NEW
	3c(i)	(i) % of PACE stop/searches which lead to arrest by ethnicity	N/A	N/A	N/A	N/A
	3c(ii)	(ii) % of other (non-PACE) stop/searches which lead to arrest by ethnicity	N/A	N/A	N/A	N/A
	3d*	Comparison of percentage detected of violence against the person offences by ethnicity of the victim (sanction detections)	White - 31.8% Ethnic - 40.0%	White - 34.8% Ethnic - 24.2%	White +3% Ethnic -16%	White - 31% Ethnic - 31%
	3e	Proportion of police recruits (ethnic) compared to the proportion of people from minority ethnic groups in the economically active population.	(No ethnic recruits)	(No ethnic recruits)	-	NEW
	3f*	Ratio of officers from minority ethnic groups resigning to all officer resignations	00:02	00:02	NEW	NEW
	3g*	% of female police officers compared to overall Force strength.	18.4%	20.1%	1.7%	19%
Measures of Crime Levels	4a^	Using the British Crime Survey (a) the risk of personal crime; and	4%	8%	4.0%	8%
	4b^	(b) the risk of household crime.	12%	11%	-1.0%	11%
	5a	(a) Domestic Burglaries per 1,000 households.	2.35 (486 crimes)	1.67 (347 crimes)	-0.68 (-139 crimes)	5.06 (1042 crimes)
	5b	(b) Violent crime per 1,000 population.	8.22 (4101 crimes)	7.68 (3829 crimes)	-0.54 (272 crimes)	17.60 (8593 crimes)
	5c	(c) Robberies per 1,000 population.	0.03 (17 crimes)	0.04 (19 crimes)	+0.01 (+2 crimes)	0.1 (48 crimes)
	5d	(d) Vehicle crime per 1,000 population.	2.17 (1080 crimes)	1.71 (852 crimes)	-0.46 (228 crimes)	4.77 (2331 crimes)
	5e	(e) Life threatening crime and gun crime per 1,000 population.	0.07 (37 crimes)	0.11 (56 crimes)	+0.04 (+19 crimes)	0.28
Offences Brought to Justice Measures (OBTJ)	6a**	Number of notifiable/recorded offences resulting in convictions, caution or taken into consideration at court	1,826	2,006	+180 OBTJ (+9.9%)	11,068
	6b**	% of notifiable/recorded offences resulting in convictions, caution or taken into consideration at court	30.5%	34.9%	4.4%	NEW
Detection Measure	7a	% of notifiable/recorded offences resulting in charge, summons, caution or taken into consideration at court ('sanction detections')	29.0%	35.3%	6.3%	31%
Domestic Violence Measures	8a	Percentage of domestic violence incidents with a power of arrest where an arrest was made relating to the incident.	80.2% (498 arrests)	80.0% (597 arrests)	+99 arrests	80%
Traffic Measures	9a(i)**	(i) Number of people killed in under 30 days or seriously injured in road traffic collisions	146 fatal or serious collisions	122 fatal or serious collisions	-24 collisions	391 fatal or serious collisions
	9a(ii)**	(ii) Number of persons killed or seriously injured in road traffic collisions per 100million vehicle kilometres travelled.	2.97	2.48	-0.49	8.13
Quality of Life Measures	10a^	Using the British Crime Survey a) fear of crime	11%	9%	-2%	10%
	10b^	Perceptions of anti-social behaviour; and	NEW	NEW	NEW	NEW
	10c^	Perceptions of local drug use / drug dealing	NEW	NEW	NEW	NEW
Resource Use Measures	11a^	Percentage of police officer time spent on frontline duties	65.4%	-	-	68.5%
	12a	Delivery of cashable and non-cashable efficiency targets	NEW	NEW	NEW	NEW
	13a*	Average number of working hours lost due to sickness per police officer.	23.7 hours	16.8 hours	-29%	92.8 hours
	13b*	Average number of working hours lost due to sickness by police staff.	22.7 hours	19.5 hours	-14%	80.7 hours

\* April-June Data : Latest Available

\*\* - April-July Data : Latest Available

\*\*\* - April & May Data only Latest Available

^ - End of Year Data 2004/05 : Latest Available