



Heddlu Dyfed-Powys Police

CRIME TRENDS UPDATE October 2005

Contents:

Headline Statistics	2
Most Frequent Recorded Offences Profile	3
Recorded Crimes and Detection Rates	4
Domestic Burglaries and Detection Rates	5
Other Burglary and Detection Rates	6
Violent Crime and Detection Rates	7
Vehicle Crime and Detection Rates	8
Criminal Damage and Detection Rates	9
Drugs Statistics and Detection Rates	10
Section Level Sanction Detection Summary	11
Divisional Contribution to Targets	12
Domestic Incidents	16
Narrowing the Justice Gap	17
Road Traffic Collisions	18
PPAF Statutory Performance Indicator Summary	19

Heddlu Dyfed Powys Police: Corporate Services



Recorded Crime:

- Total Recorded Crime is down by 6% (-1,193 crimes) compared to the same period last year (SPLY) to stand at 19,035 crimes. The monthly figure for October 2005 stands at 2,673 – a fall of 9% (-256 offences) on the same month in 2004, and 11% (273 offences) up on the preceding month September 2005.
- Recorded detection performance has a total detection rate for the force at 44% (8307 total detections) compared with 39% the previous year. The volume of total detections has increased by 5% (+381 detections). The sanction detection rate stands at 37% - this is consistent with the target rate of 31% (compared with 30% last year). The volume of sanction detections has increased by 1,125 or 19%.

Domestic Burglary:

- Total Domestic Burglary offences are down by 30% (-210 crimes) compared to the same period last year (SPLY) to stand at 499 crimes. The monthly figure for October 2005 stands at 87 – a fall of 21% (-23 offences) on the same month in 2004, but a 34% (+ 22 offences) increase on the preceding month September 2005.
- Recorded detection performance remains higher than last year, with the total detection rate for the force at 24% (122 detections) compared with 22% the previous year. The volume of total detections has decreased by 23% (-35) as a consequence of this substantial fall in offences. The sanction detection rate stands at 23% (up from 19% last year) with the volume of sanction detections falling by 11% (-15).

Violent Crimes:

- Total Violent crime remains down by 6% (-316 crimes) compared to the same period last year (SPLY) to stand at 5,244 crimes. The monthly figure for October 2005 stands at 747 – a fall of 4% (-29 offences) on the same month in 2004, but a 12% (79 offences) increase on the preceding month September 2005.
- Recorded detection performance stands at a total detection rate for the force of 64% (3,333 detections) up from 58% last year. The volume of total detections has increased by 4% (+129) over this period. Furthermore the sanction detection rate stands at 50% (compared with 37% last year) with the volume recorded up by 27% (+550 sanction detections).

Vehicle Crime:

- Total Vehicle crime is down by 20% (-309 crimes) compared to the same period last year (SPLY) to stand at 1,207 crimes. The monthly figure for October 2005 stands at 180 – a fall of 24% (-57 offences) on the same month in 2004, but a 3% increase (+5 offences) on the preceding month September 2005.
- Recorded total detection stands at 16% (195 detections) down from 20% the previous year. The volume of total detections has decreased by 36% (-109) as a consequence this fall in recorded offences. The sanction detection rate stands at 15% (compared with 18% last year) with the volume down considerably (-94 sanction detections or 35%).

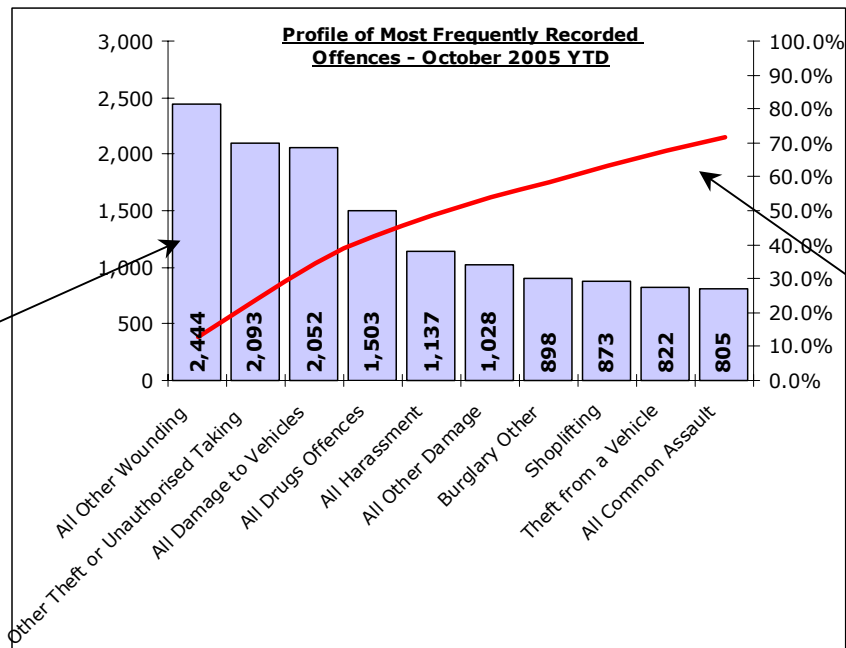
Criminal Damage:

- Total Criminal Damage has fallen by 5% (-260 crimes) compared to the same period last year (SPLY) to stand at 4,626 (excl Arson & Threat to Commit CD). The monthly figure for October 2005 stands at 670 – a fall of 7% (-50 offences) on the same month in 2004, but an increase of 30% (156) on the previous month September 2005.
- Recorded detection performance stands at a total detection rate for the force of 27% (1,236 detections) up from 25 % last year. The volume of total detections has increased by 3% (+35) over this period. The sanction detection rate stands at 22% (compared with 17% last year) with the volume up a notable 24% over this period (+193 sanction detections).

Most Frequent Recorded Offences Profile

DYFED-POWYS POLICE

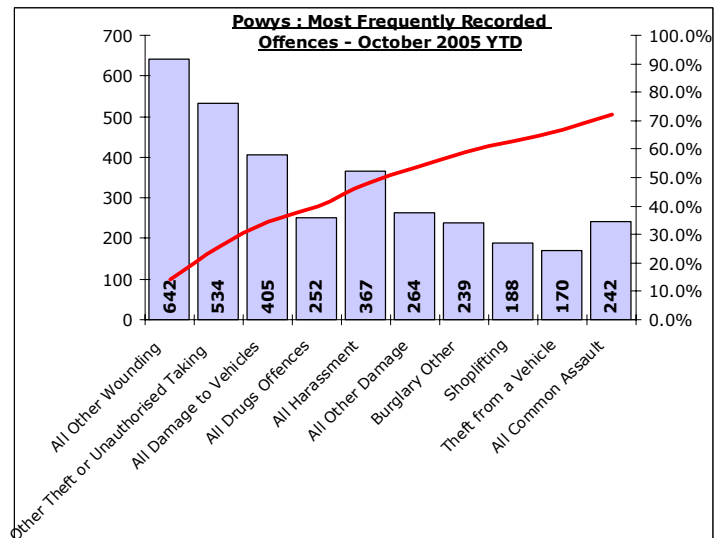
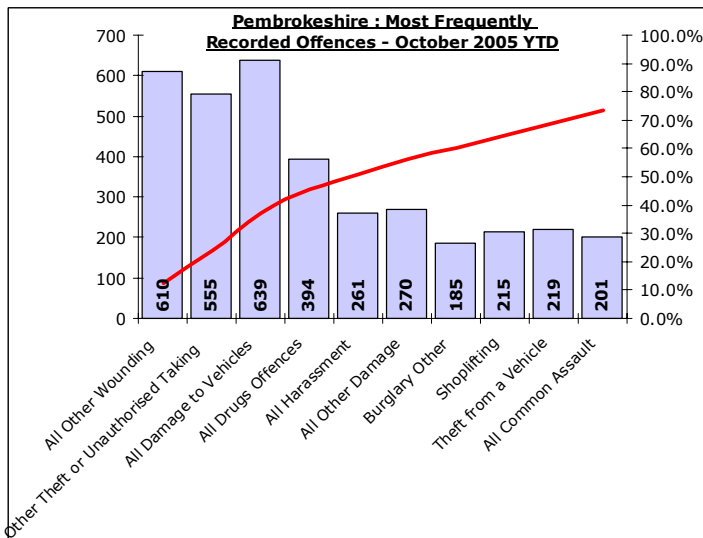
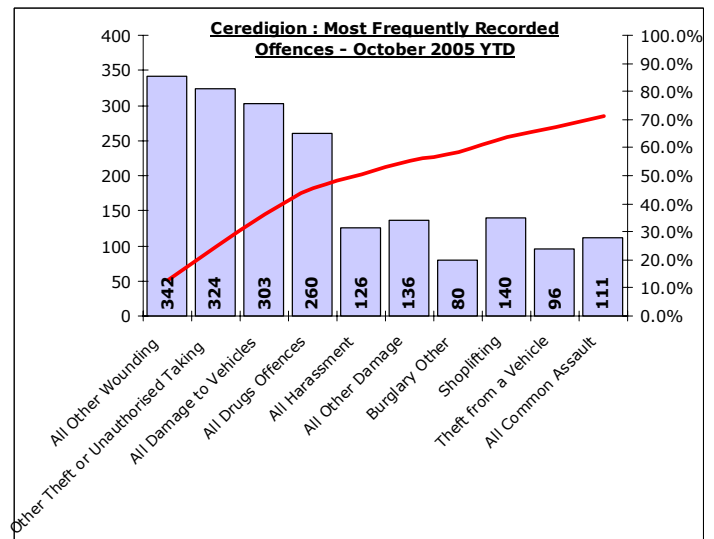
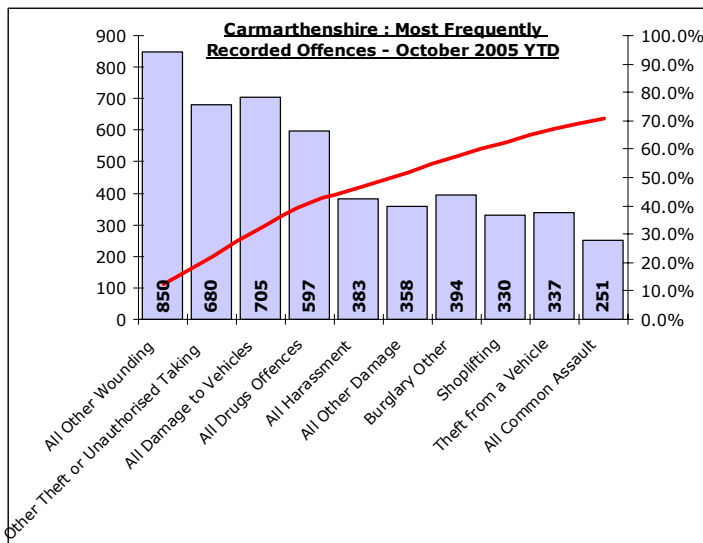
October 2005 YTD (Note : Divisonal profiles are in the same sequence as forces' most frequent categories – for comparison)



Recorded offences in each category in order of volume.

(Note these can include a number of sub-categories)

The cumulative contribution of these offence categories toward the total volume of offences recorded.

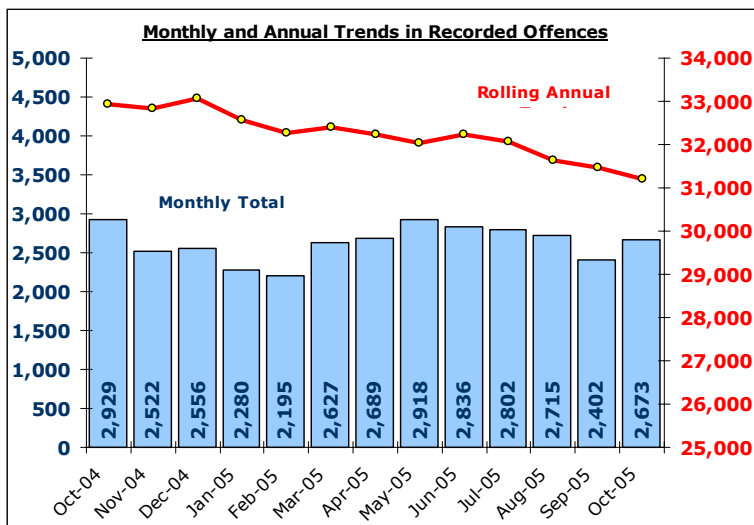


Total Recorded Crime

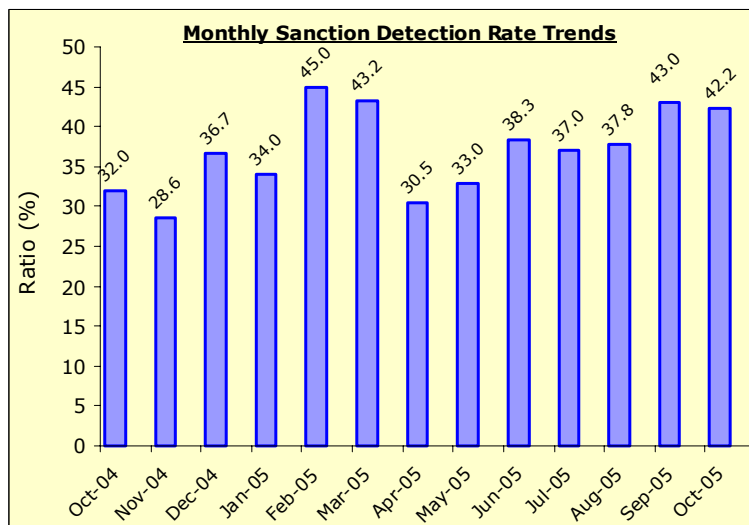
DYFED-POWYS POLICE

TARGET 2005/06 : NO TARGET

Recorded Crime Levels – October 2005

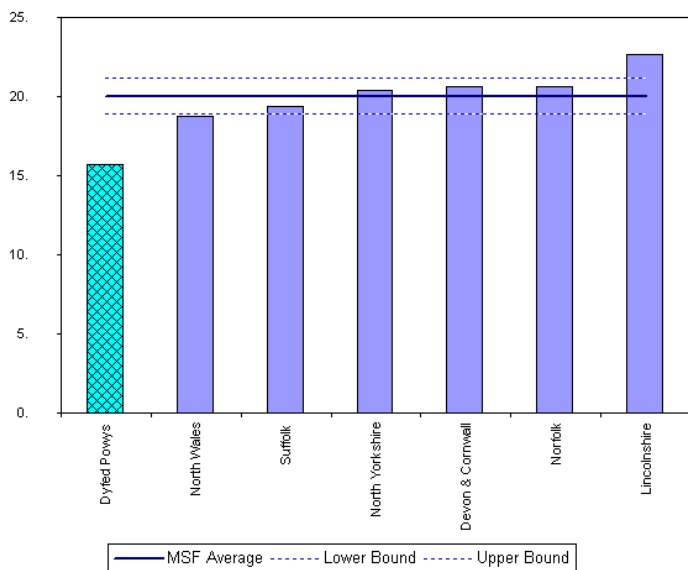


Monthly Sanction Detection Rates – October 2005

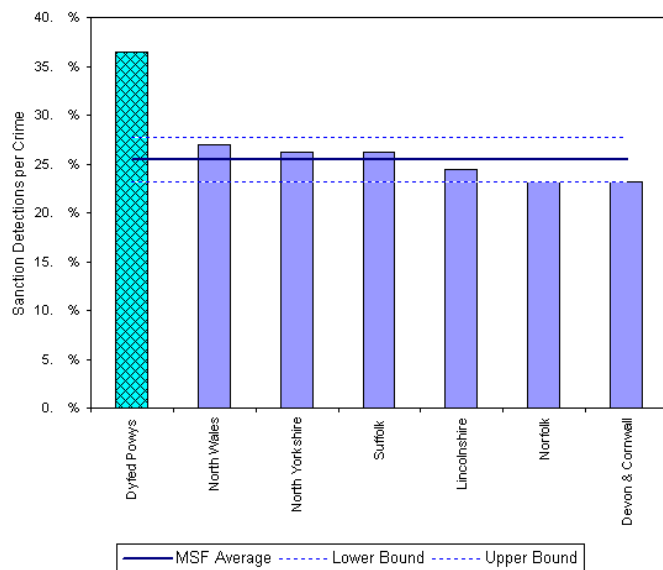


Total Recorded Crimes: October 2005 YTD	October 2005 YTD			Detection Rates YTD		Annual Trends - SPLY		
	Crimes	Sanction Dets	Total Dets	Sanction %	Total %	Crimes SPLY	Change	% Change
FORCE	19,035	7,093	8,307	37.3%	43.6%	20,228	- 1,193	- 5.9%
CARMS	6,910	2,512	2,897	36.4%	41.9%	7,906	- 996	- 12.6%
CERED	2,687	1,057	1,248	39.3%	46.4%	2,842	- 155	- 5.5%
PEMBS	4,846	1,753	2,136	36.2%	44.1%	5,115	- 269	- 5.3%
POWYS	4,592	1,771	2,026	38.6%	44.1%	4,365	+ 227	+ 5.2%

MSF – Crimes per 1000 Residents 01 July 2005 – 30 September 2005 (latest quarter)



MSF – Sanction detections (annual): 01 October 2004 – 30 September 2005



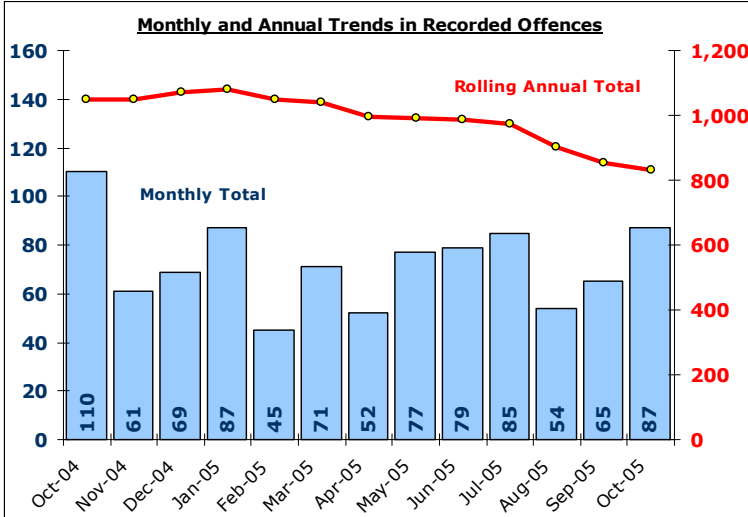
Benchmark MSF - Sanction Detections per Crime-Dyfed Powys-All Crimes-01 Oct 2004 - 30 Sep 2005

Domestic Burglary

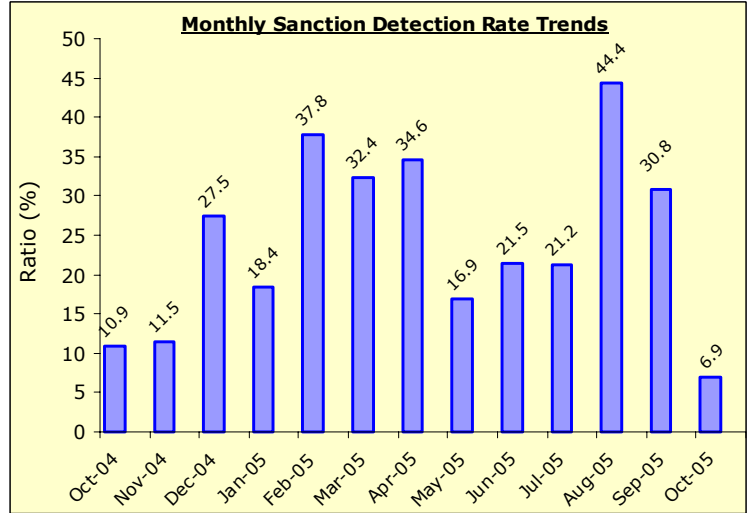
DYFED-POWYS POLICE

TARGET 2005/06 : 0% Increase in offences & 28% total detection rate

Recorded Crime Levels – October 2005

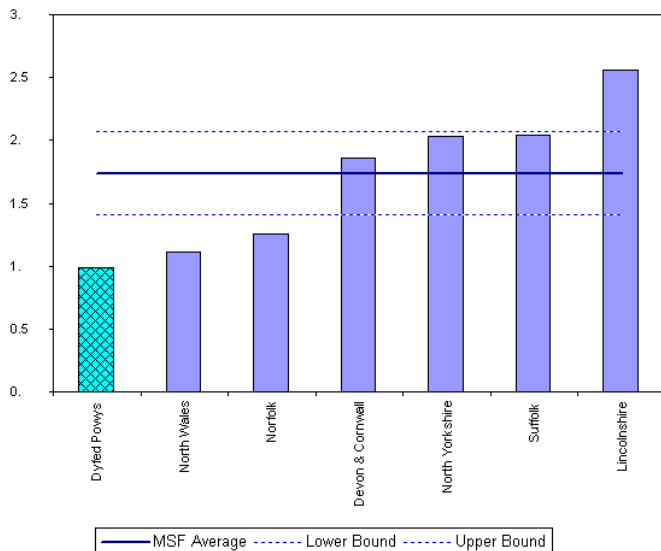


Monthly Sanction Detection Rates – October 2005

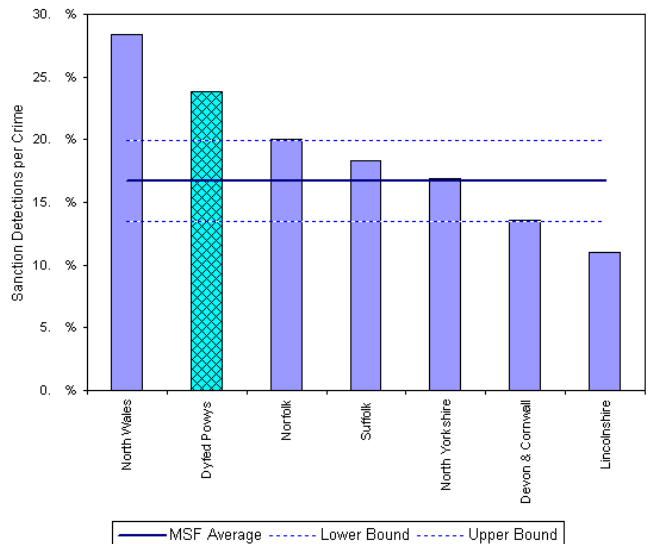


Total Domestic Burglary: October 2005 YTD	October 2005 YTD			Detection Rates YTD		Annual Trends - SPLY		
	Crimes	Sanction Dets	Total Dets	Sanction %	Total %	Crimes SPLY	Change	% Change
FORCE	499	116	122	23.2%	24.4%	709	- 210	- 29.6%
CARMS	214	49	49	22.9%	22.9%	312	- 98	- 31.4%
CERED	50	13	13	26.0%	26.0%	83	- 33	- 39.8%
PEMBS	110	27	33	24.5%	30.0%	175	- 65	- 37.1%
POWYS	125	27	27	21.6%	21.6%	139	- 14	- 10.1%

MSF – Crimes per 1000 Residents 01 July 2005 – 30 September 2005 (latest quarter)



MSF – Sanction detections (annual): 01 October 2004 – 30 September 2005



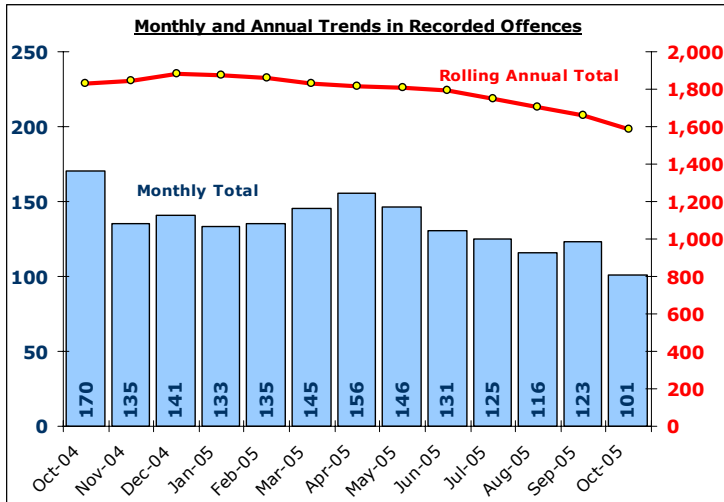
Byrdant MSF - Sanction Detections per Crime-Dyfed Powys-Domestic Burglary-01 Oct.2004 - 30 Sep. 2005

Other Burglary

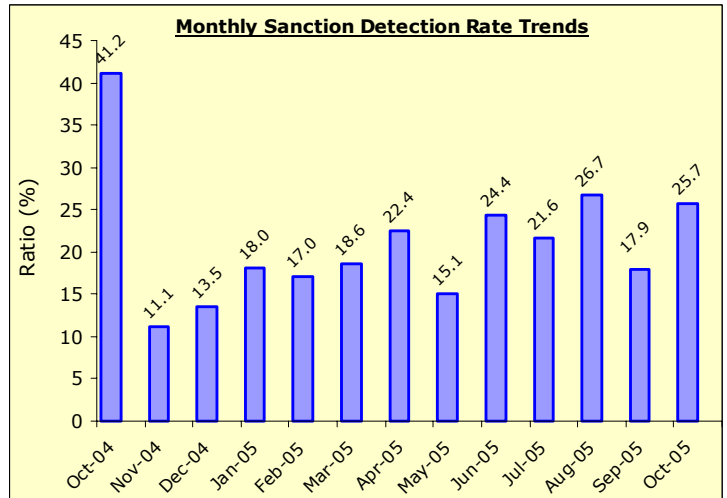
DYFED-POWYS POLICE

TARGET 2005/06 : No Target

Recorded Crime Levels – October 2005

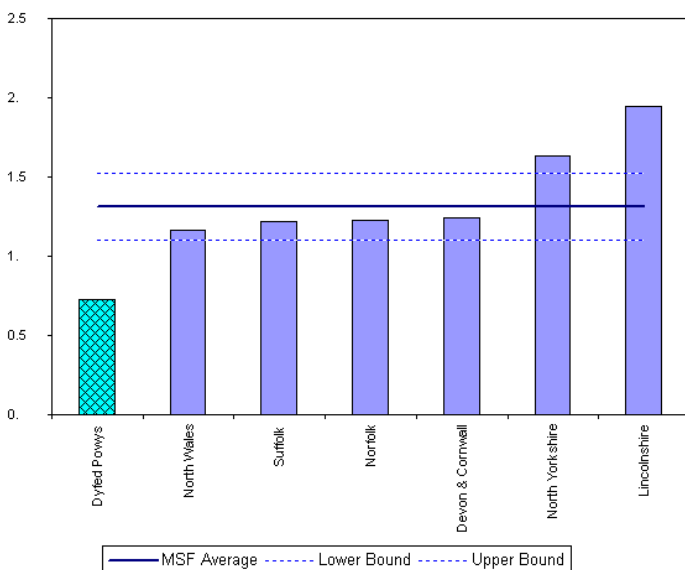


Monthly Sanction Detection Rates – October 2005

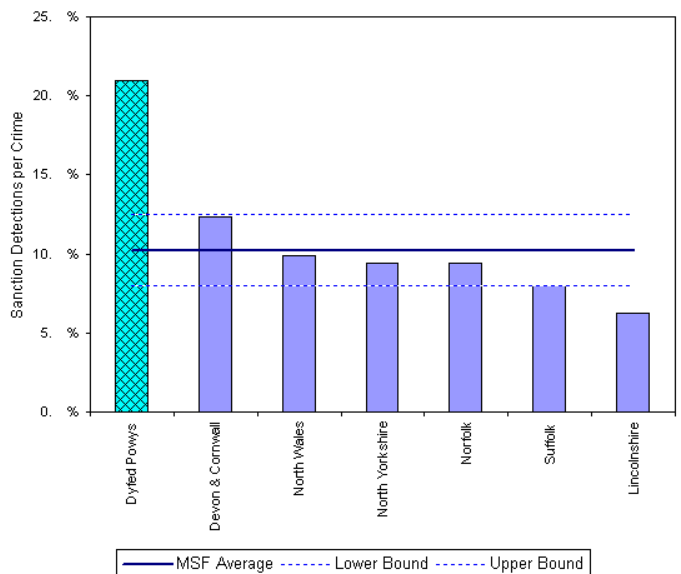


Total Other Burglary Crimes: October 2005 YTD	October 2005 YTD			Detection Rates YTD		Annual Trends - SPLY		
	Crimes	Sanction Dets	Total Dets	Sanction %	Total %	Crimes SPLY	Change	% Change
FORCE	898	195	205	21.7%	22.8%	1,144	- 246	- 21.5%
CARMS	394	85	87	21.6%	22.1%	567	- 173	- 30.5%
CERED	80	11	14	13.8%	17.5%	136	- 56	- 41.2%
PEMBS	185	39	42	21.1%	22.7%	202	- 17	- 8.4%
POWYS	239	60	62	25.1%	25.9%	239	=	=

MSF – Crimes per 1000 Residents 01 July 2005 – 30 September 2005 (latest quarter)



MSF – Sanction detections (annual): 01 October 2004 – 30 September 2005



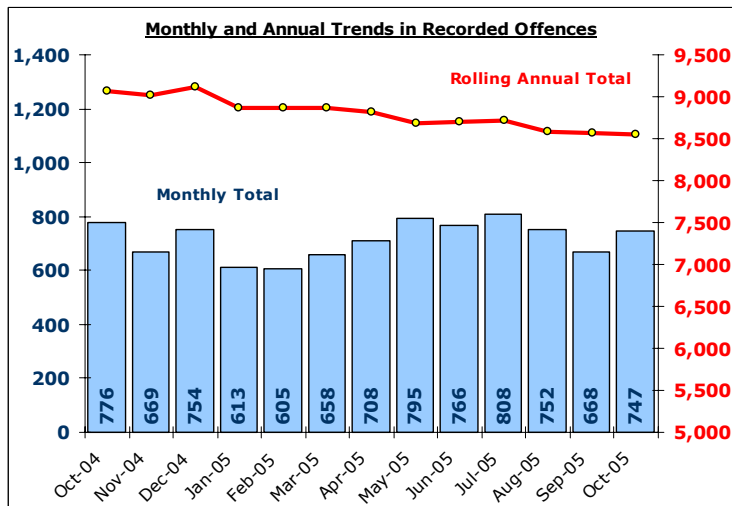
Barchart MSF - Sanction Detections per Crime-Dyfed Powys-Non Domestic Burglary 01 Oct 2004 - 30 Sep 2005

Total Violent Crime

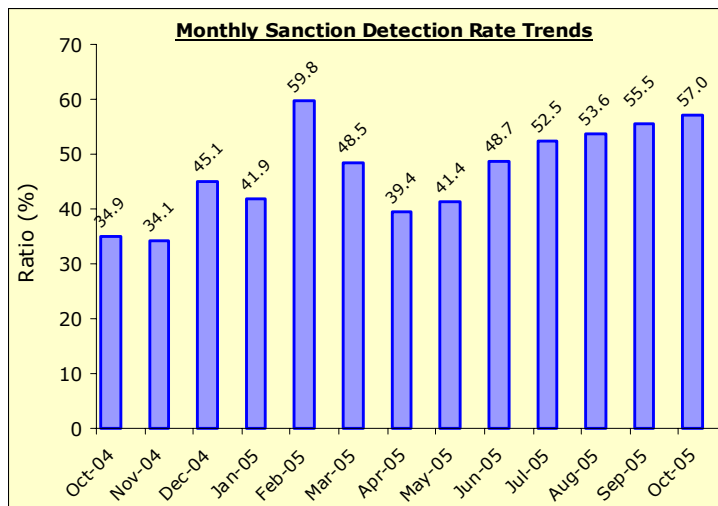
DYFED-POWYS POLICE

TARGET 2005/06 – 3% Reduction in offences & 60% total detection rate

Recorded Crime Levels – October 2005

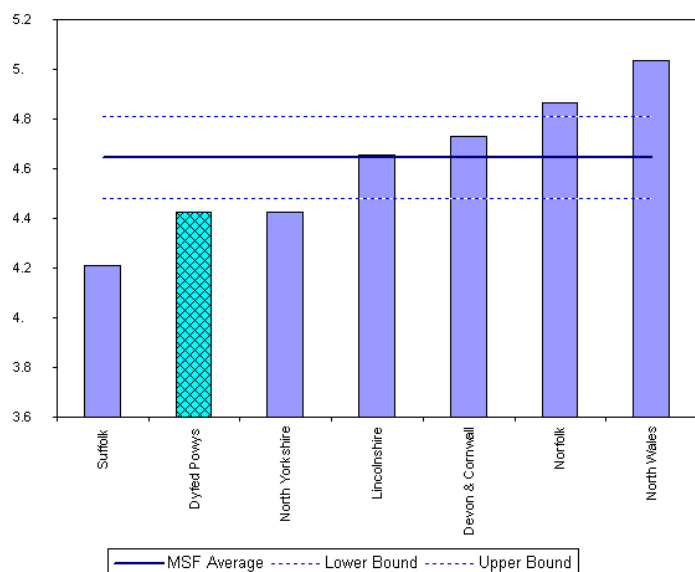


Monthly Sanction Detection Rates – October 2005

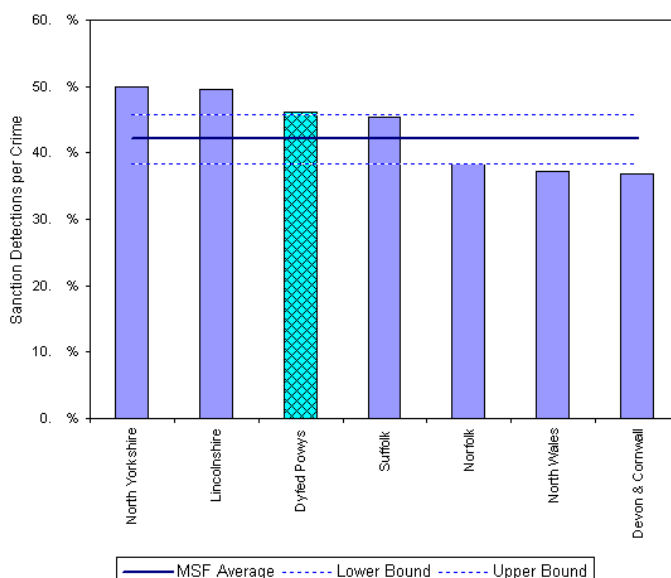


Total Violent Crimes: October 2005 YTD	October 2005 YTD			Detection Rates YTD		Annual Trends - SPL Y		
	Crimes	Sanction Dets	Total Dets	Sanction %	Total %	Crimes SPL Y	Change	% Change
FORCE	5,244	2,605	3,333	49.7%	63.6%	5,560	- 316	- 5.7%
CARMS	1,823	879	1,105	48.2%	60.6%	2,081	- 258	- 12.4%
CERED	707	354	474	50.1%	67.0%	856	- 149	- 17.4%
PEMBS	1,247	606	829	48.6%	66.5%	1,392	- 145	- 10.4%
POWYS	1,467	766	925	52.2%	63.1%	1,231	+ 236	+ 19.2%

MSF – Crimes per 1000 Residents
01 July 2005 – 30 September 2005 (latest quarter)



MSF – Sanction detections (annual):
01 October 2004 – 30 September 2005



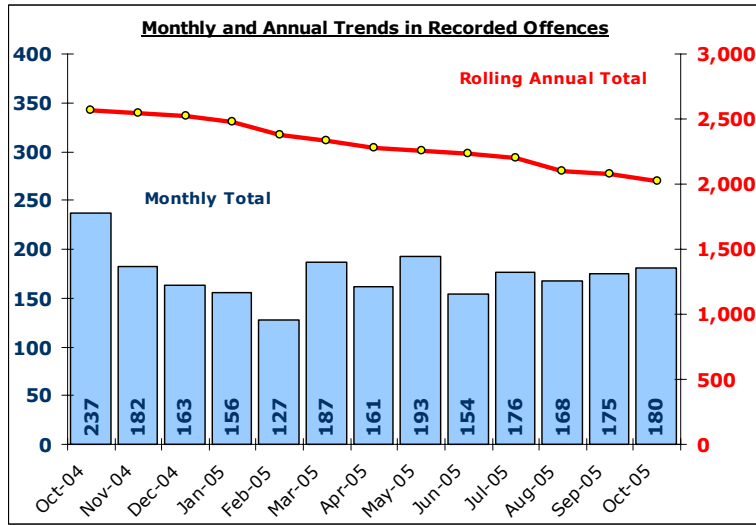
BarChart MSF - Sanction Detections per Crime-Dyfed Powys-Violent Crimes-01 Oct-2004 - 30 Sep-2005

Total Vehicle Crime

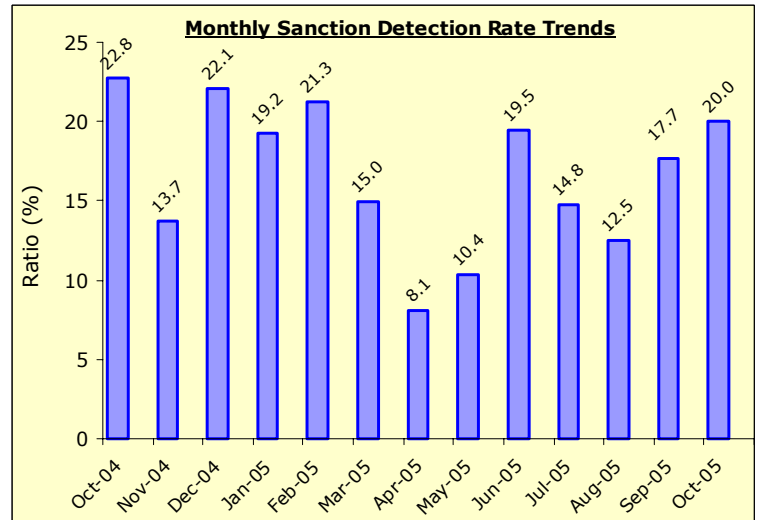
DYFED-POWYS POLICE

TARGET 2005/06 : 0% Increase in offences & 20% total detection rate

Recorded Crime Levels – October 2005

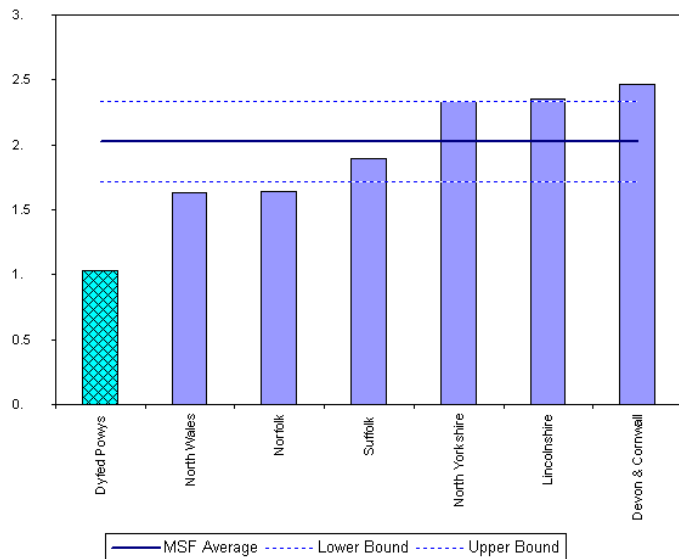


Monthly Sanction Detection Rates – October 2005

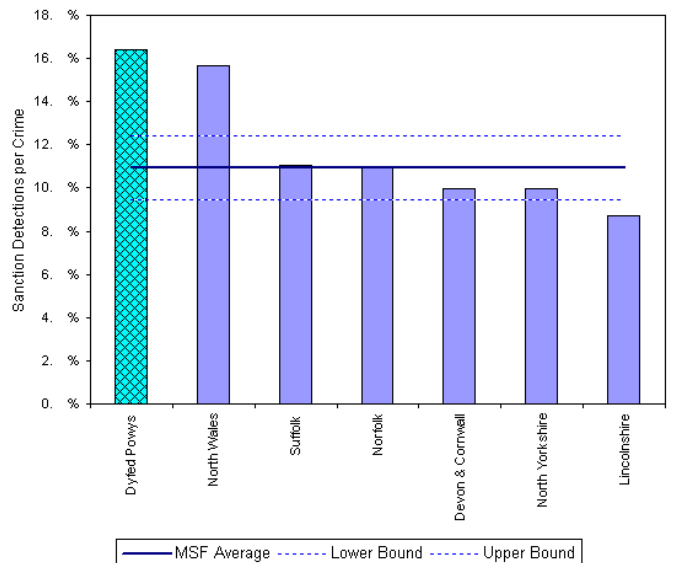


Total Vehicle Crimes: October 2005 YTD	October 2005 YTD			Detection Rates YTD		Annual Trends - SPL Y		
	Crimes	Sanction Dets	Total Dets	Sanction %	Total %	Crimes SPL Y	Change	% Change
FORCE	1,207	177	195	14.7%	16.2%	1,516	- 309	- 20.4%
CARMS	495	64	69	12.9%	13.9%	624	- 129	- 20.7%
CERED	136	24	27	17.6%	19.9%	143	- 7	- 4.9%
PEMBS	312	51	57	16.3%	18.3%	422	- 110	- 26.1%
POWYS	264	38	42	14.4%	15.9%	327	- 63	- 19.3%

MSF – Crimes per 1000 Residents 01 July 2005 – 30 September 2005 (latest quarter)



MSF – Sanction detections (annual): 01 October 2004 – 30 September 2005



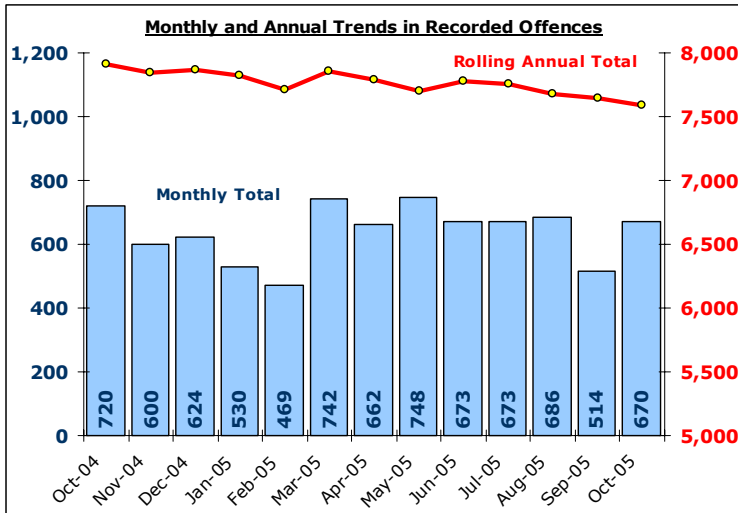
Bar chart MSF - Sanction Detections per Crime-Dyfed Powys-Vehicle Crime (excluding Vehicle Interference) 01 Oct 2004 - 30 Sep 2005

Total Criminal Damage

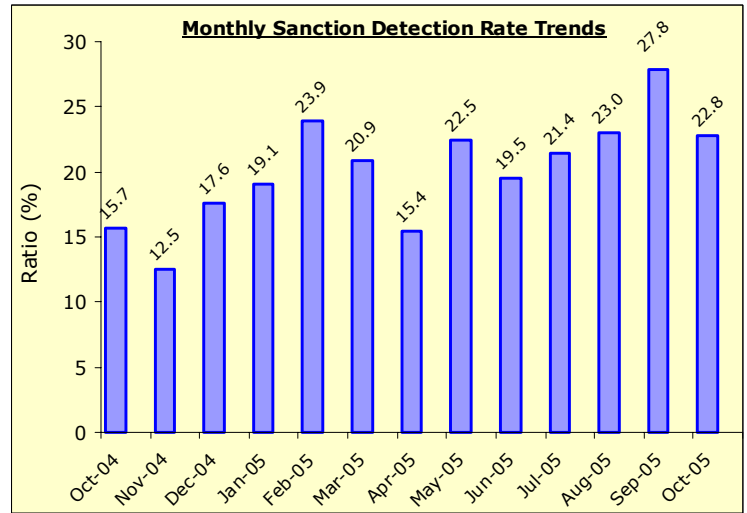
EXCLUDES ARSON % THREAT TO COMMIT CRIMINAL DAMAGE (HOC 56 & 59)

TARGET 2005/06 : NO TARGET

Recorded Crime Levels – October 2005

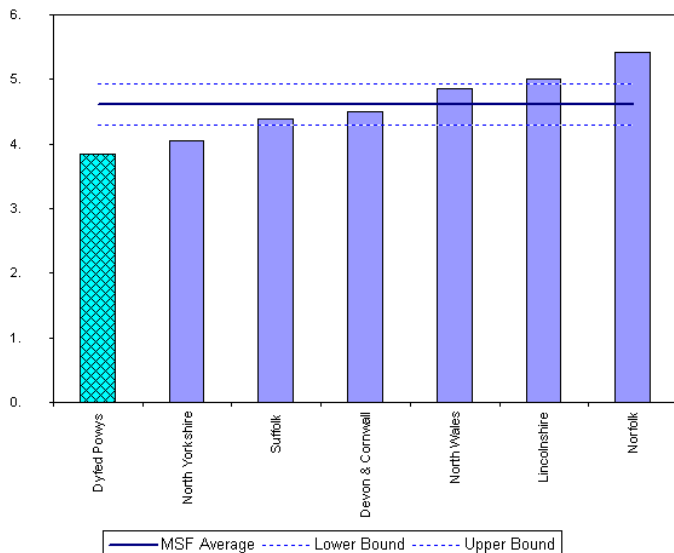


Monthly Sanction Detection Rates – October 2005

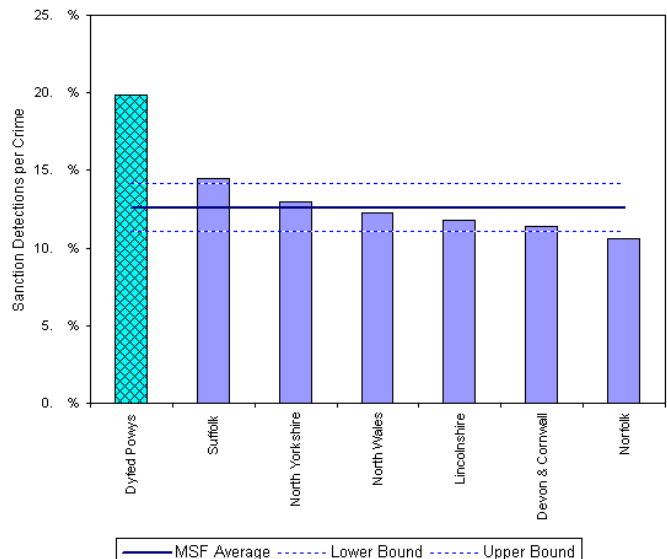


Total Criminal Damage: October 2005 YTD	October 2005 YTD			Detection Rates YTD		Annual Trends - SPLY		
	Crimes	Sanction Dets	Total Dets	Sanction %	Total %	Crimes SPLY	Change	% Change
FORCE	4,626	999	1,236	21.6%	26.7%	4,886	- 260	- 5.3%
CARMS	1,626	323	391	19.9%	24.0%	1,888	- 262	- 13.9%
CERED	670	134	158	20.0%	23.6%	594	+ 76	+ 12.8%
PEMBS	1,322	296	383	22.4%	29.0%	1,359	- 37	- 2.7%
POWYS	1,008	246	304	24.4%	30.2%	1,045	- 37	- 3.5%

MSF – Crimes per 1000 Residents 01 July 2005 – 30 September 2005 (latest quarter)



MSF – Sanction detections (annual): 01 October 2004 – 30 September 2005



Source : CORA Analysis & IQuantA

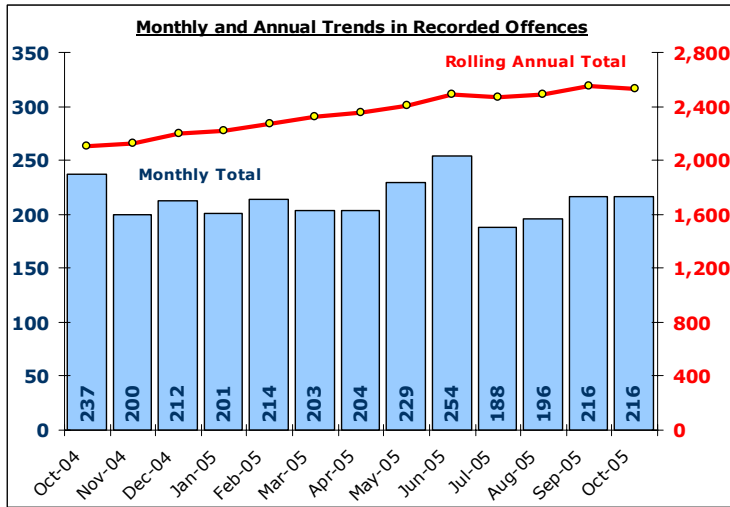
Barclay MSF - Sanction Detections per Crime-Dyfed Powys-Criminal Damage (exc 19)01 Oct 2004 - 30 Sep 2005

Total Drug Offences

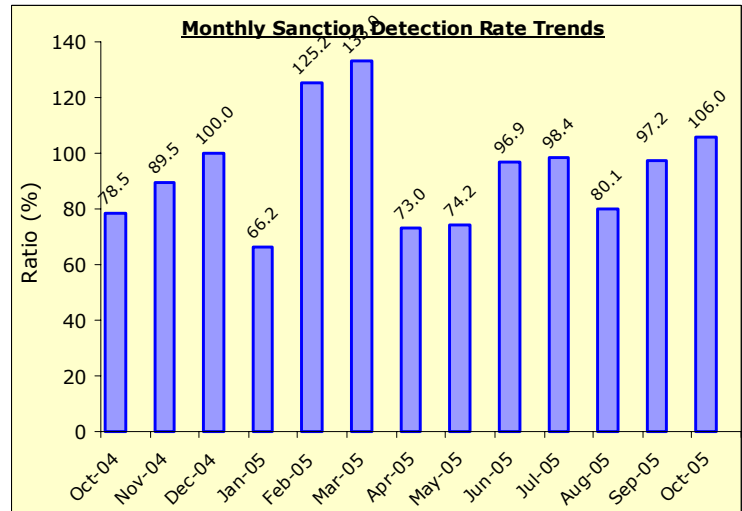
DYFED-POWYS POLICE

TARGET 2005/06 : NO TARGET

Recorded Crime Levels – October 2005

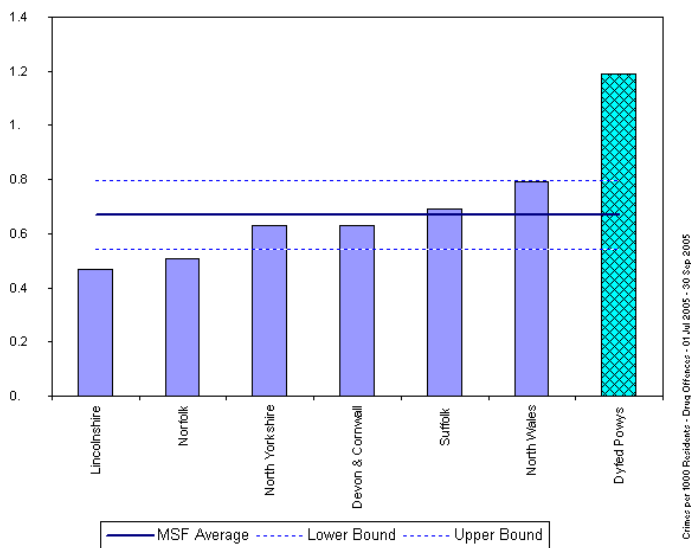


Monthly Sanction Detection Rates – October 2005

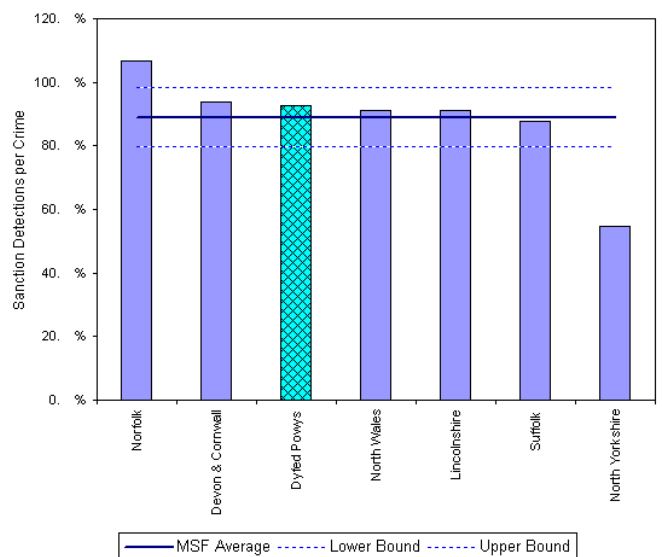


Total Drug Offences: October 2005 YTD	October 2005 YTD			Detection Rates YTD		Annual Trends - SPLY		
	Crimes	Sanction Dets	Total Dets	Sanction %	Total %	Crimes SPLY	Change	% Change
FORCE	1,503	1,346	1,433	89.6%	95.3%	1,297	+ 206	+ 15.9%
CARMS	597	524	576	87.8%	96.5%	490	+ 107	+ 21.8%
CERED	260	246	253	94.6%	97.3%	244	+ 16	+ 6.6%
PEMBS	394	347	366	88.1%	92.9%	343	+ 51	+ 14.9%
POWYS	252	229	238	90.9%	94.4%	220	+ 32	+ 14.5%

MSF – Crimes per 1000 Residents 01 July 2005 – 30 September 2005 (latest quarter)



MSF – Sanction detections (annual): 01 October 2004 – 30 September 2005



Section Level Sanction Detection Summary

DYFED-POWYS POLICE

TARGET 2005/06 : 31% SANCTION DETECTION RATE

Sanction Detections Performance October 2005 YTD: Total Recorded

Sanction Detection Rate	Recorded	Detected	Det Ratio	Recorded	Diff	% Change
THE FORCE	19,035	7,093	37.3%	20,228	- 1,193	- 5.9%
Carmarthenshire	6,910	2,512	36.4%	7,906	- 996	- 12.6%
Ammanford (AA)	845	378	44.7%	912	- 67	- 7.3%
Carmarthen (AC)	1,685	695	41.2%	1,895	- 210	- 11.1%
Llanelli (AL)	3,412	1,105	32.4%	4,096	- 684	- 16.7%
Towy Gwendraeth (AT)	968	334	34.5%	1,003	- 35	- 3.5%
Ceredigion	2,687	1,057	39.3%	2,842	- 155	- 5.5%
Aberystwyth (BA)	1,428	602	42.2%	1,457	- 29	- 2.0%
Aberaeron (BB)	276	88	31.9%	367	- 91	- 24.8%
Cardigan (BC)	646	231	35.8%	676	- 30	- 4.4%
Lampeter (BL)	337	136	40.4%	342	- 5	- 1.5%
Pembrokeshire	4,846	1,753	36.2%	5,115	- 269	- 5.3%
Fishguard (CF)	556	189	34.0%	604	- 48	- 7.9%
Haverfordwest (CH)	1,208	420	34.8%	1,362	- 154	- 11.3%
Milford Haven (CM)	916	362	39.5%	1,054	- 138	- 13.1%
Pembroke Dock (CP)	1,237	474	38.3%	1,064	+ 173	+ 16.3%
Tenby (CT)	929	308	33.2%	1,031	- 102	- 9.9%
Powys	4,592	1,771	38.6%	4,365	+ 227	+ 5.2%
Brecon (DB)	1,192	447	37.5%	1,022	+ 170	+ 16.6%
Llandrindod Wells (DL)	813	322	39.6%	889	- 76	- 8.5%
Newtown (DN)	1,425	526	36.9%	1,227	+ 198	+ 16.1%
Welshpool (DW)	788	342	43.4%	819	- 31	- 3.8%
Ystradgynlais (DY)	374	134	35.8%	408	- 34	- 8.3%

Sanction Detection Performance October 2005 YTD: Domestic Burglary, Violent Crime & Vehicle Crime

Sanction Detections	Total Domestic Burglary			Total Violent Crime			Total Vehicle Crime		
	Recorded	Detected	Det Ratio	Recorded	Detected	Det Ratio	Recorded	Detected	Det Ratio
THE FORCE	499	116	23.2%	5,244	2,605	49.7%	1,207	177	14.7%
Carmarthenshire	214	49	22.9%	1,823	879	48.2%	495	64	12.9%
Ammanford (AA)	17	9	52.9%	171	83	48.5%	52	8	15.4%
Carmarthen (AC)	31	7	22.6%	487	275	56.5%	91	10	11.0%
Llanelli (AL)	129	20	15.5%	929	398	42.8%	285	35	12.3%
Towy Gwendraeth (AT)	37	13	35.1%	236	123	52.1%	67	11	16.4%
Ceredigion	50	13	26.0%	707	354	50.1%	136	24	17.6%
Aberystwyth (BA)	32	9	28.1%	381	216	56.7%	63	9	14.3%
Aberaeron (BB)	2	1	50.0%	69	32	46.4%	19	1	5.3%
Cardigan (BC)	12	2	16.7%	169	70	41.4%	32	5	15.6%
Lampeter (BL)	4	1	25.0%	88	36	40.9%	22	9	40.9%
Pembrokeshire	110	27	24.5%	1,247	606	48.6%	312	51	16.3%
Fishguard (CF)	9	3	33.3%	137	59	43.1%	40	6	15.0%
Haverfordwest (CH)	34	7	20.6%	369	158	42.8%	47	7	14.9%
Milford Haven (CM)	22	8	36.4%	279	138	49.5%	48	12	25.0%
Pembroke Dock (CP)	28	4	14.3%	264	132	50.0%	79	9	11.4%
Tenby (CT)	17	5	29.4%	198	119	60.1%	98	17	17.3%
Powys	125	27	21.6%	1,467	766	52.2%	264	38	14.4%
Brecon (DB)	21	2	9.5%	360	213	59.2%	78	6	7.7%
Llandrindod Wells (DL)	31	9	29.0%	283	164	58.0%	41	5	12.2%
Newtown (DN)	47	11	23.4%	486	214	44.0%	67	10	14.9%
Welshpool (DW)	21	5	23.8%	216	120	55.6%	47	13	27.7%
Ystradgynlais (DY)	5	0	0.0%	122	55	45.1%	31	4	12.9%

Target Contribution Summary - Carmarthenshire

DYFED-POWYS POLICE

GREEN/RED indicates current performance **consistent** or **not consistent** with force target reduction & detection rate

CARMARTHENSHIRE		April-October YTD		Last Year		Indicator
CRIME	Performance	Indicator	Performance	Indicator	Change & Detection	
Total Crime Recorded (per 1,000 population)	6910	40.0	7909	45.8	-12.6%	
Total Detections (% rate)	2898	41.9%	3027	38.3%	41.9%	
Burglary Dwelling (per 1,000 households)	214	2.9	312	4.3	-31.4%	
Total Detections (% rate)	49	22.9%	73	23.4%	22.9%	
Total Violent Crime (per 1,000 population)	1823	10.5	2082	12.0	-12.4%	
Total Detections (% rate)	1106	60.7%	1178	56.6%	60.7%	
Autocrime per (1,000 population)	495	2.9	624	3.6	-20.7%	
Total Detections (% rate)	69	13.9%	124	19.9%	13.9%	
Ammanford		April-October YTD		Last Year		Indicator
CRIME	Performance	Indicator	Performance	Indicator	Change & Detection	
Total Crime Recorded (per 1,000 population)	845	25.9	912	27.9	-7.3%	
Total Detections (% rate)	425	50.3%	423	46.4%	50.3%	
Burglary Dwelling (per 1,000 households)	17	1.2	26	1.9	-34.6%	
Total Detections (% rate)	9	52.9%	8	30.8%	52.9%	
Total Violent Crime (per 1,000 population)	171	5.2	251	7.7	-31.9%	
Total Detections (% rate)	103	60.2%	157	62.5%	60.2%	
Autocrime per (1,000 population)	52	1.6	55	1.7	-5.5%	
Total Detections (% rate)	9	17.3%	10	18.2%	17.3%	
Carmarthen		April-October YTD		Last Year		Indicator
CRIME	Performance	Indicator	Performance	Indicator	Change & Detection	
Total Crime Recorded (per 1,000 population)	1685	34.1	1895	38.3	-11.1%	
Total Detections (% rate)	769	45.6%	843	44.5%	45.6%	
Burglary Dwelling (per 1,000 households)	31	1.5	43	2.1	-27.9%	
Total Detections (% rate)	7	22.6%	6	14.0%	22.6%	
Total Violent Crime (per 1,000 population)	487	9.8	527	10.7	-7.6%	
Total Detections (% rate)	323	66.3%	333	63.2%	66.3%	
Autocrime per (1,000 population)	91	1.8	93	1.9	-2.2%	
Total Detections (% rate)	10	11.0%	9	9.7%	11.0%	
Llanelli Rural		April-October YTD		Last Year		Indicator
CRIME	Performance	Indicator	Performance	Indicator	Change & Detection	
Total Crime Recorded (per 1,000 population)	934	89.5	1103	105.7	-15.3%	
Total Detections (% rate)	380	40.7%	390	35.4%	40.7%	
Burglary Dwelling (per 1,000 households)	88	19.4	138	30.4	-36.2%	
Total Detections (% rate)	13	14.8%	36	26.1%	14.8%	
Total Violent Crime (per 1,000 population)	268	25.7	309	29.6	-13.3%	
Total Detections (% rate)	180	67.2%	161	52.1%	67.2%	
Autocrime per (1,000 population)	82	7.9	113	10.8	-27.4%	
Total Detections (% rate)	10	12.2%	41	36.3%	12.2%	
Llanelli Town		April-October YTD		Last Year		Indicator
CRIME	Performance	Indicator	Performance	Indicator	Change & Detection	
Total Crime Recorded (per 1,000 population)	2091	41.8	2607	52.1	-19.8%	
Total Detections (% rate)	815	39.0%	839	32.2%	39.0%	
Burglary Dwelling (per 1,000 households)	36	1.7	48	2.2	-25.0%	
Total Detections (% rate)	7	19.4%	9	18.8%	19.4%	
Total Violent Crime (per 1,000 population)	547	10.9	619	12.4	-11.6%	
Total Detections (% rate)	301	55.0%	305	49.3%	55.0%	
Autocrime per (1,000 population)	166	3.3	250	5.0	-33.6%	
Total Detections (% rate)	21	12.7%	50	20.0%	12.7%	
Towy/Gwenraeth		April-October YTD		Last Year		Indicator
CRIME	Performance	Indicator	Performance	Indicator	Change & Detection	
Total Crime Recorded (per 1,000 population)	968	32.0	1004	33.2	-3.6%	
Total Detections (% rate)	374	38.6%	387	38.5%	38.6%	
Burglary Dwelling (per 1,000 households)	37	3.0	46	3.7	-19.6%	
Total Detections (% rate)	13	35.1%	13	28.3%	35.1%	
Total Violent Crime (per 1,000 population)	236	7.8	243	8.0	-2.9%	
Total Detections (% rate)	141	59.7%	150	61.7%	59.7%	
Autocrime per (1,000 population)	67	2.2	85	2.8	-21.2%	
Total Detections (% rate)	12	17.9%	12	14.1%	17.9%	

Target Contribution Summary - Ceredigion

DYFED-POWYS POLICE

GREEN/RED indicates current performance **consistent** or **not consistent** with force target reduction & detection rate

CEREDIGION		April-October YTD		Last Year		Indicator
CRIME	Performance	Indicator	Performance	Indicator	Change & Detection	
Total Crime Recorded (per 1,000 population)	2687	35.9	2842	37.9	-5.5%	
Total Detections (% rate)	1248	46.4%	1130	39.8%	46.4%	
Burglary Dwelling (per 1,000 households)	50	1.6	83	2.7	-39.8%	
Total Detections (% rate)	13	26.0%	15	18.1%	26.0%	
Total Violent Crime (per 1,000 population)	707	9.4	856	11.4	-17.4%	
Total Detections (% rate)	474	67.0%	406	47.4%	67.0%	
Autocrime per (1,000 population)	136	1.8	143	1.9	-4.9%	
Total Detections (% rate)	27	19.9%	25	17.5%	19.9%	
Ceredigion North		April-October YTD		Last Year		Indicator
CRIME	Performance	Indicator	Performance	Indicator	Change & Detection	
Total Crime Recorded (per 1,000 population)	1428	44.9	1456	45.8	-1.9%	
Total Detections (% rate)	676	47.3%	638	43.8%	47.3%	
Burglary Dwelling (per 1,000 households)	32	2.6	25	2.0	28.0%	
Total Detections (% rate)	9	28.1%	6	24.0%	28.1%	
Total Violent Crime (per 1,000 population)	381	12.0	439	13.8	-13.2%	
Total Detections (% rate)	269	70.6%	218	49.7%	70.6%	
Autocrime per (1,000 population)	63	2.0	59	1.9	6.8%	
Total Detections (% rate)	10	15.9%	9	15.3%	15.9%	
Ceredigion South		April-October YTD		Last Year		Indicator
CRIME	Performance	Indicator	Performance	Indicator	Change & Detection	
Total Crime Recorded (per 1,000 population)	1259	29.3	1386	32.3	-9.2%	
Total Detections (% rate)	572	45.4%	492	35.5%	45.4%	
Burglary Dwelling (per 1,000 households)	18	1.0	58	3.1	-69.0%	
Total Detections (% rate)	4	22.2%	9	15.5%	22.2%	
Total Violent Crime (per 1,000 population)	326	7.6	417	9.7	-21.8%	
Total Detections (% rate)	205	62.9%	188	45.1%	62.9%	
Autocrime per (1,000 population)	73	1.7	84	2.0	-13.1%	
Total Detections (% rate)	17	23.3%	16	19.0%	23.3%	

Ceredigion South is an area used for comparison purposes only. It incorporates the three section areas of Lampeter/Aberaeron and Cardigan. Details on these three discrete areas is also included here for information.

Aberaeron		April-October YTD		Last Year		Indicator
CRIME	Performance	Indicator	Performance	Indicator	Change & Detection	
Total Crime Recorded (per 1,000 population)	276	21.8	367	28.9	-24.8%	
Total Detections (% rate)	102	37.0%	121	33.0%	37.0%	
Burglary Dwelling (per 1,000 households)	2	0.4	18	3.3	-88.9%	
Total Detections (% rate)	1	50.0%	3	16.7%	50.0%	
Total Violent Crime (per 1,000 population)	69	5.4	99	7.8	-30.3%	
Total Detections (% rate)	34	49.3%	44	44.4%	49.3%	
Autocrime per (1,000 population)	19	1.5	17	1.3	11.8%	
Total Detections (% rate)	2	10.5%	4	23.5%	10.5%	
Cardigan		April-October YTD		Last Year		Indicator
CRIME	Performance	Indicator	Performance	Indicator	Change & Detection	
Total Crime Recorded (per 1,000 population)	646	34.2	676	35.8	-4.4%	
Total Detections (% rate)	286	44.3%	254	37.6%	44.3%	
Burglary Dwelling (per 1,000 households)	12	1.5	23	2.8	-47.8%	
Total Detections (% rate)	2	16.7%	3	13.0%	16.7%	
Total Violent Crime (per 1,000 population)	169	9.0	211	11.2	-19.9%	
Total Detections (% rate)	109	64.5%	102	48.3%	64.5%	
Autocrime per (1,000 population)	32	1.7	41	2.2	-22.0%	
Total Detections (% rate)	5	15.6%	9	22.0%	15.6%	
Lampeter		April-October YTD		Last Year		Indicator
CRIME	Performance	Indicator	Performance	Indicator	Change & Detection	
Total Crime Recorded (per 1,000 population)	337	29.1	343	29.6	-1.7%	
Total Detections (% rate)	184	54.6%	117	34.1%	54.6%	
Burglary Dwelling (per 1,000 households)	4	0.8	17	3.6	-76.5%	
Total Detections (% rate)	1	25.0%	3	17.6%	25.0%	
Total Violent Crime (per 1,000 population)	88	7.6	107	9.2	-17.8%	
Total Detections (% rate)	62	70.5%	42	39.3%	70.5%	
Autocrime per (1,000 population)	22	1.9	26	2.2	-15.4%	
Total Detections (% rate)	10	45.5%	3	11.5%	45.5%	

Target Contribution Summary - Pembrokeshire

DYFED-POWYS POLICE

GREEN/RED indicates current performance **consistent** or **not consistent** with force target reduction & total detection rate

PEMBROKESHIRE		April-October YTD		Last Year		Indicator
CRIME		Performance	Indicator	Performance	Indicator	Change & Detection
Total Crime Recorded (per 1,000 population)	4846	42.5	5117	44.8		-5.3%
Total Detections (% rate)	2136	44.1%	2085	40.7%		44.1%
Burglary Dwelling (per 1,000 households)	110	2.3	175	3.6		-37.1%
Total Detections (% rate)	32	29.1%	42	24.0%		29.1%
Total Violent Crime (per 1,000 population)	1247	10.9	1393	12.2		-10.5%
Total Detections (% rate)	829	66.5%	875	62.8%		66.5%
Autocrime per (1,000 population)	312	2.7	422	3.7		-26.1%
Total Detections (% rate)	57	18.3%	71	16.8%		18.3%
Fishguard		April-October YTD		Last Year		Indicator
CRIME		Performance	Indicator	Performance	Indicator	Change & Detection
Total Crime Recorded (per 1,000 population)	556	21.0	604	22.8		-7.9%
Total Detections (% rate)	247	44.4%	263	43.5%		44.4%
Burglary Dwelling (per 1,000 households)	9	0.8	26	2.3		-65.4%
Total Detections (% rate)	4	44.4%	8	30.8%		44.4%
Total Violent Crime (per 1,000 population)	137	5.2	131	4.9		4.6%
Total Detections (% rate)	93	67.9%	95	72.5%		67.9%
Autocrime per (1,000 population)	40	1.5	56	2.1		-28.6%
Total Detections (% rate)	8	20.0%	12	21.4%		20.0%
Haverfordwest		April-October YTD		Last Year		Indicator
CRIME		Performance	Indicator	Performance	Indicator	Change & Detection
Total Crime Recorded (per 1,000 population)	1208	60.4	1362	68.1		-11.3%
Total Detections (% rate)	516	42.7%	587	43.1%		42.7%
Burglary Dwelling (per 1,000 households)	34	4.0	54	6.4		-37.0%
Total Detections (% rate)	9	26.5%	10	18.5%		26.5%
Total Violent Crime (per 1,000 population)	369	18.5	414	20.7		-10.9%
Total Detections (% rate)	222	60.2%	256	61.8%		60.2%
Autocrime per (1,000 population)	47	2.4	92	4.6		-48.9%
Total Detections (% rate)	7	14.9%	13	14.1%		14.9%
Milford Haven		April-October YTD		Last Year		Indicator
CRIME		Performance	Indicator	Performance	Indicator	Change & Detection
Total Crime Recorded (per 1,000 population)	916	37.5	1055	43.2		-13.2%
Total Detections (% rate)	431	47.1%	454	43.0%		47.1%
Burglary Dwelling (per 1,000 households)	22	2.2	26	2.6		-15.4%
Total Detections (% rate)	11	50.0%	10	38.5%		50.0%
Total Violent Crime (per 1,000 population)	279	11.4	280	11.5		-0.4%
Total Detections (% rate)	184	65.9%	176	62.9%		65.9%
Autocrime per (1,000 population)	48	2.0	74	3.0		-35.1%
Total Detections (% rate)	16	33.3%	27	36.5%		33.3%
Pembroke Dock		April-October YTD		Last Year		Indicator
CRIME		Performance	Indicator	Performance	Indicator	Change & Detection
Total Crime Recorded (per 1,000 population)	1237	64.7	1064	55.7		16.3%
Total Detections (% rate)	590	47.7%	390	36.7%		47.7%
Burglary Dwelling (per 1,000 households)	28	3.5	33	4.1		-15.2%
Total Detections (% rate)	4	14.3%	6	18.2%		14.3%
Total Violent Crime (per 1,000 population)	264	13.8	296	15.5		-10.8%
Total Detections (% rate)	188	71.2%	170	57.4%		71.2%
Autocrime per (1,000 population)	79	4.1	122	6.4		-35.2%
Total Detections (% rate)	9	11.4%	7	5.7%		11.4%
Tenby		April-October YTD		Last Year		Indicator
CRIME		Performance	Indicator	Performance	Indicator	Change & Detection
Total Crime Recorded (per 1,000 population)	929	38.5	1032	42.7		-10.0%
Total Detections (% rate)	352	37.9%	391	37.9%		37.9%
Burglary Dwelling (per 1,000 households)	17	1.6	36	3.5		-52.8%
Total Detections (% rate)	5	29.4%	8	22.2%		29.4%
Total Violent Crime (per 1,000 population)	198	8.2	272	11.3		-27.2%
Total Detections (% rate)	142	71.7%	178	65.4%		71.7%
Autocrime per (1,000 population)	98	4.1	78	3.2		25.6%
Total Detections (% rate)	17	17.3%	12	15.4%		17.3%

Target Contribution Summary - Powys

DYFED-POWYS POLICE

GREEN/RED indicates current performance **consistent** or **not consistent** with force target reduction & detection rate

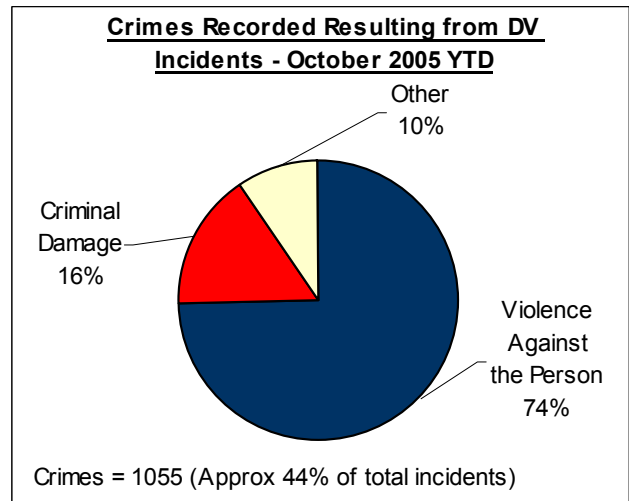
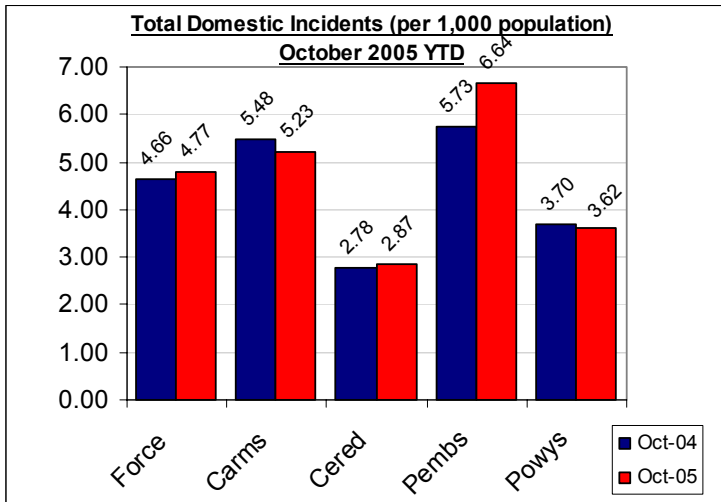
POWYS		April-October YTD		Last Year		Indicator
CRIME	Performance	Indicator	Performance	Indicator	Change & Detection	
Total Crime Recorded (per 1,000 population)	4592	36.3	4366	34.6	5.2%	
Total Detections (% rate)	2026	44.1%	1800	41.2%	44.1%	
Burglary Dwelling (per 1,000 households)	125	2.3	139	2.6	-10.1%	
Total Detections (% rate)	27	21.6%	27	19.4%	21.6%	
Total Violent Crime (per 1,000 population)	1467	11.6	1231	9.7	19.2%	
Total Detections (% rate)	925	63.1%	744	60.4%	63.1%	
Autocrime per (1,000 population)	264	2.1	328	2.6	-19.5%	
Total Detections (% rate)	42	15.9%	85	25.9%	15.9%	
Brecon		April-October YTD		Last Year		Indicator
CRIME	Performance	Indicator	Performance	Indicator	Change & Detection	
Total Crime Recorded (per 1,000 population)	1192	46.6	1023	40.0	16.5%	
Total Detections (% rate)	513	43.0%	404	39.5%	43.0%	
Burglary Dwelling (per 1,000 households)	21	2.0	22	2.1	-4.5%	
Total Detections (% rate)	2	9.5%	5	22.7%	9.5%	
Total Violent Crime (per 1,000 population)	360	14.1	299	11.7	20.4%	
Total Detections (% rate)	253	70.3%	172	57.5%	70.3%	
Autocrime per (1,000 population)	78	3.0	80	3.1	-2.5%	
Total Detections (% rate)	6	7.7%	18	22.5%	7.7%	
Llandrindod Wells		April-October YTD		Last Year		Indicator
CRIME	Performance	Indicator	Performance	Indicator	Change & Detection	
Total Crime Recorded (per 1,000 population)	813	28.8	889	31.5	-8.5%	
Total Detections (% rate)	377	46.4%	411	46.2%	46.4%	
Burglary Dwelling (per 1,000 households)	31	2.5	41	3.3	-24.4%	
Total Detections (% rate)	9	29.0%	8	19.5%	29.0%	
Total Violent Crime (per 1,000 population)	283	10.0	251	8.9	12.7%	
Total Detections (% rate)	200	70.7%	164	65.3%	70.7%	
Autocrime per (1,000 population)	41	1.5	62	2.2	-33.9%	
Total Detections (% rate)	7	17.1%	10	16.1%	17.1%	
Newtown		April-October YTD		Last Year		Indicator
CRIME	Performance	Indicator	Performance	Indicator	Change & Detection	
Total Crime Recorded (per 1,000 population)	1425	40.6	1227	34.9	16.1%	
Total Detections (% rate)	602	42.2%	441	35.9%	42.2%	
Burglary Dwelling (per 1,000 households)	47	3.1	58	3.9	-19.0%	
Total Detections (% rate)	11	23.4%	7	12.1%	23.4%	
Total Violent Crime (per 1,000 population)	486	13.8	342	9.7	42.1%	
Total Detections (% rate)	265	54.5%	203	59.4%	54.5%	
Autocrime per (1,000 population)	67	1.9	65	1.9	3.1%	
Total Detections (% rate)	10	14.9%	18	27.7%	14.9%	
Welshpool		April-October YTD		Last Year		Indicator
CRIME	Performance	Indicator	Performance	Indicator	Change & Detection	
Total Crime Recorded (per 1,000 population)	788	30.9	819	32.1	-3.8%	
Total Detections (% rate)	374	47.5%	361	44.1%	47.5%	
Burglary Dwelling (per 1,000 households)	21	2.0	12	1.1	75.0%	
Total Detections (% rate)	5	23.8%	3	25.0%	23.8%	
Total Violent Crime (per 1,000 population)	216	8.5	221	8.7	-2.3%	
Total Detections (% rate)	137	63.4%	134	60.6%	63.4%	
Autocrime per (1,000 population)	47	1.8	72	2.8	-34.7%	
Total Detections (% rate)	15	31.9%	28	38.9%	31.9%	
Ystradgynlais		April-October YTD		Last Year		Indicator
CRIME	Performance	Indicator	Performance	Indicator	Change & Detection	
Total Crime Recorded (per 1,000 population)	374	31.5	408	34.4	-8.3%	
Total Detections (% rate)	160	42.8%	183	44.9%	42.8%	
Burglary Dwelling (per 1,000 households)	5	1.0	6	1.2	-16.7%	
Total Detections (% rate)	0	0.0%	4	66.7%	0.0%	
Total Violent Crime (per 1,000 population)	122	10.3	118	9.9	3.4%	
Total Detections (% rate)	70	57.4%	71	60.2%	57.4%	
Autocrime per (1,000 population)	31	2.6	49	4.1	-36.7%	
Total Detections (% rate)	4	12.9%	11	22.4%	12.9%	

Domestic Incidents

DYFED POWYS POLICE

SPI 8A TARGET - 80% OF INCIDENTS (WITH A POWER OF ARREST) LEADING TO ARREST
LOCAL TARGET – 30% OF TOTAL INCIDENTS INVOLVING REPEAT VICTIMS

Please note figures provided here are provisional only. For the latest detailed information please contact your local Public Protection Unit (PPU) for further details.



Section & Divisional Summary – October 2005 YTD

Section	Incidents		Arrests		Sanction Detections			Repeat Victims	Apr-Oct 2004 (SPLY)	
	Total Incidents	Power Of Arrest	Arrests where POA	% POA	Crimes	Sanction Detections	% Sanction Detection	% Repeats (12mnths data)	Total Incidents	Annual % Change
Ammanford (AA)	105	38	30	78.9%	40	19	47.5%	14.4%	168	-37.5%
Carmarthen (AC)	196	82	73	89.0%	87	36	41.4%	20.6%	180	8.9%
Llanelli (AL)	490	199	141	70.9%	227	83	36.6%	26.4%	472	3.8%
Towy Gwendraeth (AT)	138	55	38	69.1%	50	29	58.0%	20.8%	153	-9.8%
Carmarthenshire	929	374	282	75.4%	404	167	41.3%	22.9%	973	-4.5%
Aberystwyth (BA)	127	67	58	86.6%	57	31	54.4%	14.9%	107	18.7%
Aberaeron (BB)	19	12	8	66.7%	11	6	54.5%	22.6%	32	-40.6%
Cardigan (BC)	51	25	17	68.0%	31	11	35.5%	13.4%	61	-16.4%
Lampeter (BL)	27	13	9	69.2%	15	4	26.7%	16.2%	17	58.8%
Ceredigion	224	117	92	78.6%	114	52	45.6%	15.3%	217	3.2%
Fishguard (CF)	105	41	35	85.4%	43	18	41.9%	29.6%	77	36.4%
Haverfordwest (CH)	184	71	54	76.1%	73	17	23.3%	36.3%	166	10.8%
Milford Haven (CM)	191	76	58	76.3%	68	36	52.9%	34.3%	153	24.8%
Pembroke Dock (CP)	193	92	71	77.2%	71	28	39.4%	30.5%	189	2.1%
Tenby (CT)	106	46	38	82.6%	41	18	43.9%	25.1%	87	21.8%
Pembrokeshire	779	326	256	78.5%	296	117	39.5%	31.9%	672	15.9%
Brecon (DB)	95	42	42	100.0%	44	16	36.4%	17.3%	118	-19.5%
Llandrindod Wells (DL)	87	37	33	89.2%	42	18	42.9%	23.6%	84	3.6%
Newtown (DN)	151	68	63	92.6%	81	30	37.0%	21.2%	133	13.5%
Welshpool (DW)	76	28	27	96.4%	40	16	40.0%	26.1%	93	-18.3%
Ystradgynlais (DY)	64	28	26	92.9%	34	17	50.0%	26.8%	55	16.4%
Powys	473	203	191	94.1%	241	97	40.2%	22.4%	483	-2.1%
Force	2405	1020	821	80.5%	1055	433	41.0%	25.0%	2345	2.6%

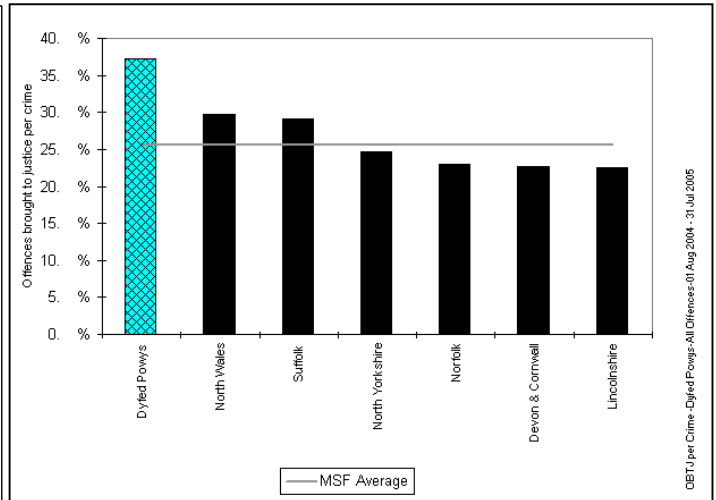
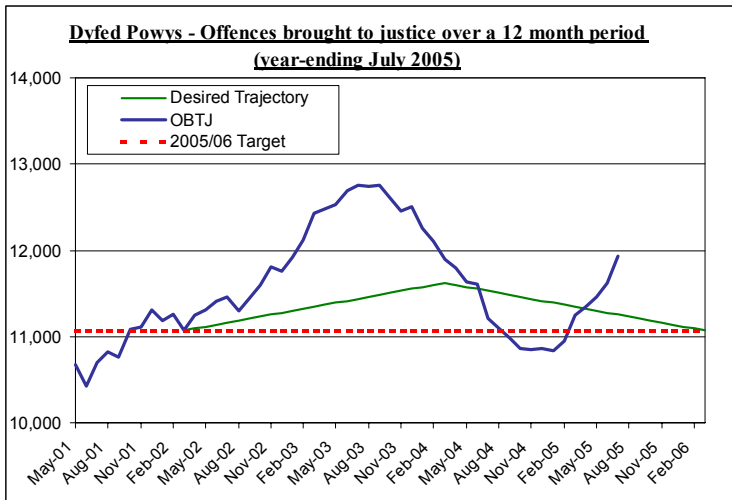
Source: LCS Recorded Domestic Incident Details (extracted 07/11/05)

NB – Repeat Victims performance is based on 12-months incident data and not only year-to-date performance.

Narrowing the Justice Gap - OFFENCES BROUGHT TO JUSTICE & SANCTION DETECTIONS

TARGET 2005/06 : 11,068 total OBTJ (Offences Brought to Justice)

Total Offences Brought to Justice (OBTJ) – Force & MSF Comparisons



Offences brought to justice – 12 monthly data	TIC	PND	Formal Warnings	Cautions	Convictions	OBTJ
Baseline: Apr 01 – Mar 02	420	-	-	3,698	6,900	11,068
Latest: August 04 – July 05	515	591	1,136	3,729	5,963	11,934
Change	+23%	-	-	+1%	-14%	+8%
2005/06 Force Target (0%- 11,068 OBTJ)	YES	n/a	YES	YES	NO	YES

Divisional Contribution Toward OBTJ Volumes – Approximate Latest

Please note this data is provided as a **guide only** - it is provided here for information.

Approx YTD	Jul-05 OBTJ	Target**	Diff from Target
Carmarthenshire	1550	1325	16.9%
Ceredigion	658	579	13.6%
Pembrokeshire	1102	980	12.4%
Powys	1031	806	28.0%
Force	4340	3690	17.6%

** - This is the target profile required to attain the end of year target of 11,068 OBTJ. (The divisional target breakdown is based on mirroring 2004/05 contribution toward total force sanction detections).

Sanction Detection Volume Performance YTD – Current Clear-Up Breakdown (Annual % Change)

The current volume of sanction detections (October 05 YTD) is up 19% on the same period last year to stand at 7,093 (up 1,125 from 5,968*).

Area – October YTD	Charged	Summons	Cautioned	TIC	PND	F. Warning for Cannabis*	Total Sanction Dets
Carmarthenshire	1200 (+3%)	37 (-10%)	768 (+34%)	98 (-28%)	154 (25 SPLY)	255 (+29%)	2512 (+17%)
Ceredigion	492 (+5%)	41 (+52%)	382 (+15%)	40 (+38%)	26 (9 SPLY)	76 (+3%)	1057 (+12%)
Pembrokeshire	751 (+3%)	35 (-21%)	640 (+10%)	111 (25 SPLY)	102 (30 SPLY)	114 (-3%)	1753 (+15%)
Powys	788 (+13%)	78 (+95%)	604 (+33%)	76 (+38%)	149 (22 SPLY)	76 (+69%)	1771 (+35%)
Force	3231 (+5%)	191 (+9%)	2394 (+23%)	325 (-12%)	431 (86 SPLY)	521 (+23%)	7093 (+19%)

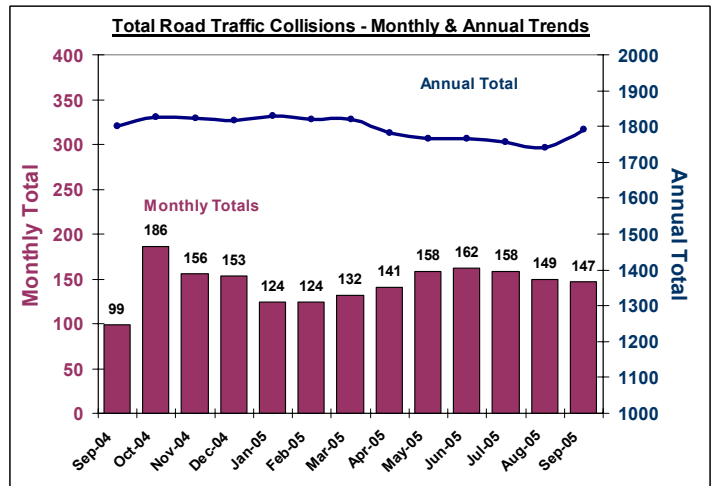
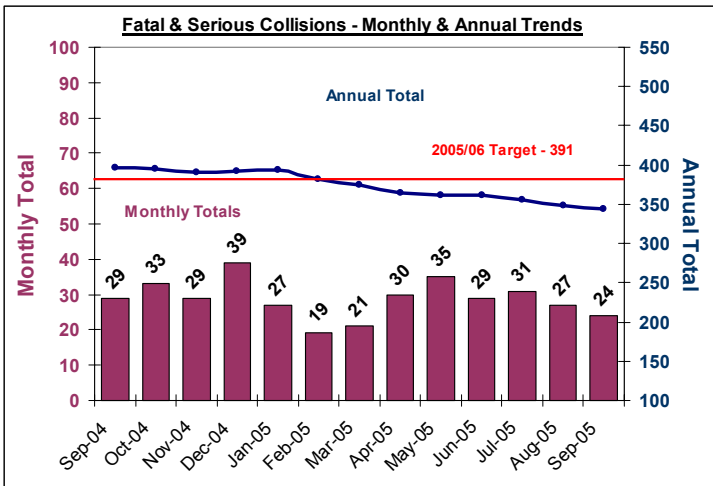
* - SPLY Data Approximate

Road Traffic Collisions

September Monthly Data Latest available

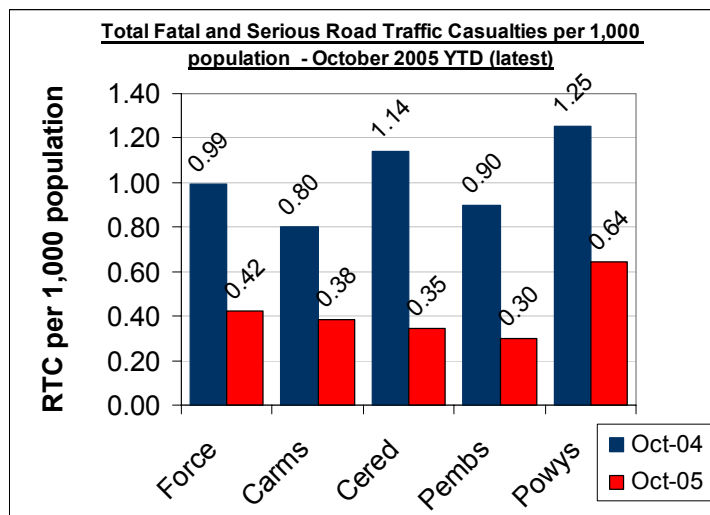
TARGET 2005/06 : 391 FATAL AND SERIOUS COLLISIONS (0.8 PER 1,000 POPULATION) – USING 2004 MID -YEAR ESTIMATES

Road Traffic Collisions – Monthly & Annual Trends (September 05 - latest data)



Performance YTD (September 2005 YTD - latest)	FORCE	Carms	Cered	Pembs	Powys
Fatal Road Collisions YTD	24	10	1	3	10
Serious & Fatal Road Collisions YTD	176	53	25	28	70
Indicator - Per 1,000 population	0.35	0.30	0.32	0.24	0.47
On-Target (0.8 end of year – 0.40 pro-rata)	YES	YES	YES	YES	NO
Fatal (SPLY)	24	9	4	3	8
Serious & Fatal (SPLY)	222	69	37	49	67

Road Traffic Casualties – 2010 Target Progress



September 2005 YTD (latest)	Force	Carms	Cered	Pembs	Powys
Number of people killed or seriously injured casualties	214	68	27	35	84
At 2010 Target Level*	YES	YES	YES	YES	YES
Number of Children (<=15 yrs) killed or seriously injured	18	5	4	4	5
At 2010 Target Level*	YES	YES	YES	YES	YES
Number of persons with slight injuries	1140	422	188	247	283
At 2010 Target Level*	NO	NO	NO	NO	NO

* 2010 Targets Established with Roads Policing Strategy, Operations Dept & National Road Policing Targets. Progress towards Pro-Rata year-end 2010 target illustrated here

Source: MAAP RTC Database 10/11/05

PPAF Statutory Performance Indicator Summary

Reported Quarterly

* - HOME OFFICE POLICE PERFORMANCE ASSESSMENT FRAMEWORK MEASURES

This Data is Updated Quarterly – Latest: Data

Activity	SPI Number	Indicator Description	Apr-Aug 2004 Performance	Apr-Aug 2005 Performance	Change	2005/06 End of Year Target
User Satisfaction Measures	1a*	Satisfaction of victims of domestic burglary, violent crime, vehicle crime and road traffic collisions with respect to - a) making contact with the Police	91.30%	92.3%	1.0%	NEW
	1b*	b) action taken by the Police	85.40%	87.5%	2.1%	NEW
	1c*	c) Being kept informed of progress	67.80%	74.4%	6.6%	NEW
	1d*	d) Their treatment by staff	92.10%	92.5%	0.4%	NEW
	1e*	e) the overall service provided	85.20%	85.8%	0.6%	NEW
Confidence	2a	Using the BCS, the % of people who think their local police do a good job	NEW	NEW	-	NEW
Fairness and Equality Measures	3a*	Satisfaction of victims of racist incidents with respect to the overall service provided	89%	66.7%	-22.2%	NEW
	3b*	From SPI 1(e), comparison of satisfaction for white users and users from visible minority ethnic groups with respect to the overall service provided.	NEW	NEW	NEW	NEW
	3c(i)	(i) % of PACE stop/searches which lead to arrest by ethnicity	N/A	N/A	N/A	N/A
	3c(ii)	(ii) % of other (non-PAEC) stop/searches which lead to arrest by ethnicity	N/A	N/A	N/A	N/A
	3d*	Comparison of percentage detected of violence against the person offences by ethnicity of the victim (sanction detections)	White - 31.8% Ethnic - 40.0%	White - 34.8% Ethnic - 24.2%	White +3% Ethnic -16%	White - 31% Ethnic - 31%
	3e	Proportion of police recruits (ethnic) compared to the proportion of people from minority ethnic groups in the economically active population.	(No ethnic recruits)	(No ethnic recruits)	-	NEW
	3f*	Ratio of officers from minority ethnic groups resigning to all officer resignations	00:02	00:02	NEW	NEW
	3g*	% of female police officers compared to overall Force strength.	18.4%	20.1%	1.7%	19%
Measures of Crime Levels	4a^	Using the British Crime Survey (a) the risk of personal crime; and	4%	8%	4.0%	8%
	4b^	(b) the risk of household crime.	12%	11%	-1.0%	11%
	5a	(a) Domestic Burglaries per 1,000 households.	2.35 (486 crimes)	1.67 (347 crimes)	-0.68 (-139 crimes)	5.06 (1042 crimes)
	5b	(b) Violent crime per 1,000 population.	8.22 (4101 crimes)	7.68 (3829 crimes)	-0.54 (272 crimes)	17.60 (8593 crimes)
	5c	(c) Robberies per 1,000 population.	0.03 (17 crimes)	0.04 (19 crimes)	+0.01 (+2 crimes)	0.1 (48 crimes)
	5d	(d) Vehicle crime per 1,000 population.	2.17 (1080 crimes)	1.71 (852 crimes)	-0.46 (228 crimes)	4.77 (2331 crimes)
	5e	(e) Life threatening crime and gun crime per 1,000 population.	0.07 (37 crimes)	0.11 (56 crimes)	+0.04 (+19 crimes)	0.28
Offences Brought to Justice Measures (OBTJ)	6a**	Number of notifiable/recorded offences resulting in convictions, caution or taken into consideration at court	1,826	2,006	+180 OBTJ (+9.9%)	11,068
	6b**	% of notifiable/recorded offences resulting in convictions, caution or taken into consideration at court	30.5%	34.9%	4.4%	NEW
Detection Measure	7a	% of notifiable/recorded offences resulting in charge, summons, caution or taken into consideration at court ('sanction detections')	29.0%	35.3%	6.3%	31%
Domestic Violence Measures	8a	Percentage of domestic violence incidents with a power of arrest where an arrest was made relating to the incident.	80.2% (498 arrests)	80.0% (597 arrests)	+99 arrests	80%
Traffic Measures	9a(i)**	(i) Number of people killed in under 30 days or seriously injured in road traffic collisions	146 fatal or serious collisions	122 fatal or serious collisions	-24 collisions	391 fatal or serious collisions
	9a(ii)**	(ii) Number of persons killed or seriously injured in road traffic collisions per 100million vehicle kilometres travelled.	2.97	2.48	-0.49	8.13
Quality of life Measures	10a^	Using the British Crime Survey a) fear of crime	11%	9%	-2%	10%
	10b^	Perceptions of anti-social behaviour; and	NEW	NEW	NEW	NEW
	10c^	Perceptions of local drug use / drug dealing	NEW	NEW	NEW	NEW
Resource Use Measures	11a^	Percentage of police officer time spent on frontline duties	65.4%	-	-	68.5%
	12a	Delivery of cashable and non-cashable efficiency targets	NEW	NEW	NEW	NEW
	13a*	Average number of working hours lost due to sickness per police officer.	23.7 hours	16.8 hours	-29%	92.8 hours
	13b*	Average number of working hours lost due to sickness by police staff.	22.7 hours	19.5 hours	-14%	80.7 hours

* April-June Data : Latest Available

** - April-July Data : Latest Available

*** - April & May Data only Latest Available

^ - End of Year Data 2004/05 : Latest Available