



Heddlu Dyfed-Powys Police

CRIME TRENDS UPDATE **November 2005**

Contents:

Headline Statistics	2
Most Frequent Recorded Offences Profile	3
Recorded Crimes and Detection Rates	4
Domestic Burglaries and Detection Rates	5
Other Burglary and Detection Rates	6
Violent Crime and Detection Rates	7
Vehicle Crime and Detection Rates	8
Criminal Damage and Detection Rates	9
Drugs Statistics and Detection Rates	10
Section Level Sanction Detection Summary	11
Divisional Contribution to Targets	12
Domestic Incidents	16
Narrowing the Justice Gap	17
Road Traffic Collisions	18
PPAF Statutory Performance Indicator Summary	19

Heddlu Dyfed Powys Police: Corporate Services

Recorded Crime:

- Total Recorded Crime is down by 6% (-1,383 crimes) compared to the same period last year (SPLY) to stand at 21,367 crimes. The monthly figure for November 2005 stands at 2,332 – a fall of 8% (-190 offences) on the same month in 2004, and 13% (-341 offences) down on the preceding month October 2005.
- Recorded detection performance has a total detection rate for the force at 44% (9,436 total detections) compared with 39% the previous year. The volume of total detections has increased by 6% (+509 detections). The sanction detection rate stands at 38% - this is consistent with the target rate of 31% (compared with 29% last year). The volume of sanction detections has increased by 1,402 or 21%.

Domestic Burglary:

- Total Domestic Burglary offences are down by 26% (-197 crimes) compared to the same period last year (SPLY) to stand at 573 crimes. The monthly figure for November 2005 stands at 74 – a rise of 21% (+13 offences) on the same month in 2004, but a 15% (-13 offences) decrease on the preceding month October 2005.
- Recorded detection performance remains higher than last year, with the total detection rate for the force at 26% (146 detections) compared with 22% the previous year. The volume of total detections has decreased by 13% (-22) as a consequence of this substantial fall in offences. The sanction detection rate stands at 24% (up from 18% last year) with the volume of sanction detections rising by 1% (+2).

Violent Crimes:

- Total Violent crime remains down by 6% (-374 crimes) compared to the same period last year (SPLY) to stand at 5,855 crimes. The monthly figure for November 2005 stands at 611 – a fall of 9% (-58 offences) on the same month in 2004, and an 18% (-136 offences) decrease on the preceding month October 2005.
- Recorded detection performance stands at a total detection rate for the force of 64% (3,754 detections) up from 58% last year. The volume of total detections has increased by 4% (+146) over this period. Furthermore the sanction detection rate stands at 51% (compared with 37% last year) with the volume recorded up by 30% (+676 sanction detections).

Vehicle Crime:

- Total Vehicle crime is down by 22% (-377 crimes) compared to the same period last year (SPLY) to stand at 1,321 crimes. The monthly figure for November 2005 stands at 114 – a fall of 37% (-68 offences) on the same month in 2004, and a 37% increase (-66 offences) on the preceding month October 2005.
- Recorded total detection stands at 17% (223 detections) down from 20% the previous year. The volume of total detections has decreased by 34% (-114) as a consequence this fall in recorded offences. The sanction detection rate stands at 16% (compared with 18% last year) with the volume down considerably (-66 sanction detections or 24%).

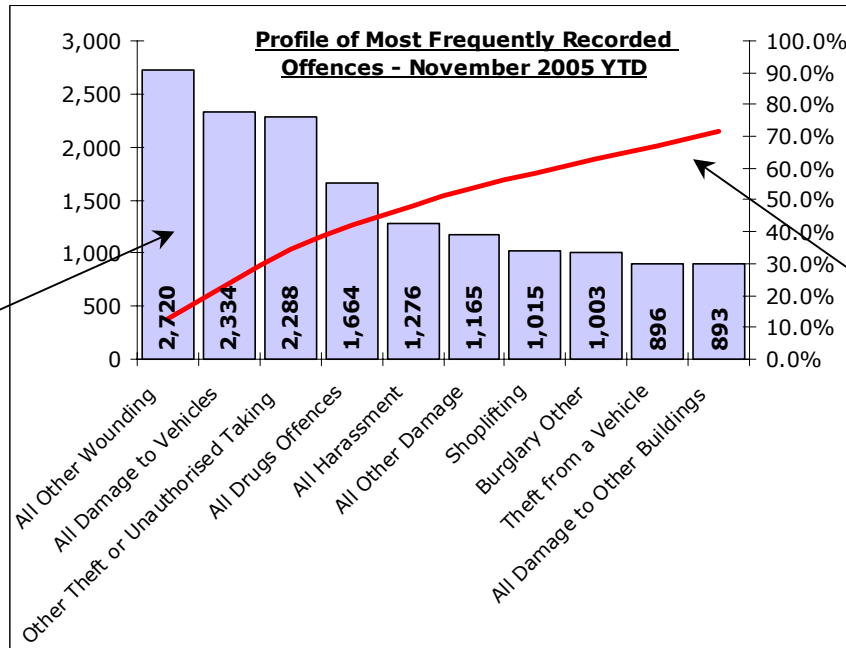
Criminal Damage:

- Total Criminal Damage has fallen by 4% (-209 crimes) compared to the same period last year (SPLY) to stand at 5,277 (excl Arson & Threat to Commit CD). The monthly figure for November 2005 stands at 651 – a rise of 9% (-50 offences) on the same month in 2004, but a decrease of 3% (-19) on the previous month October 2005.
- Recorded detection performance stands at a total detection rate for the force of 27% (1,426 detections) up from 24% last year. The volume of total detections has increased by 7% (+94) over this period. The sanction detection rate stands at 22% (compared with 16% last year) with the volume up a notable 32% over this period (+280 sanction detections).

Most Frequent Recorded Offences Profile

DYFED-POWYS POLICE

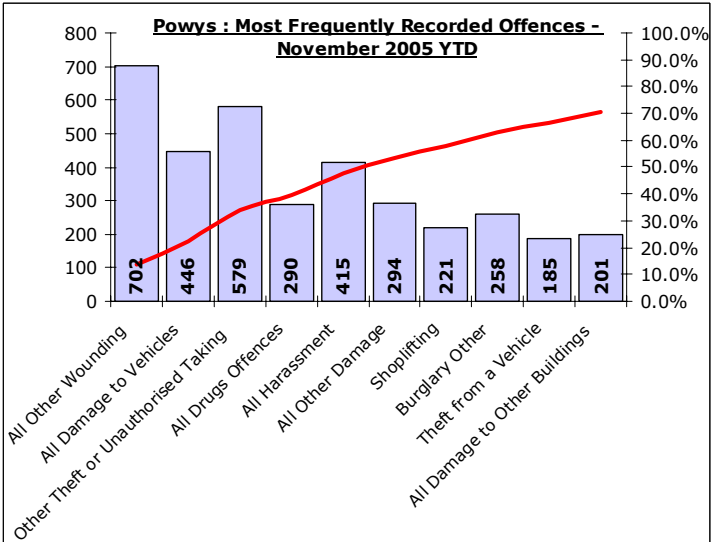
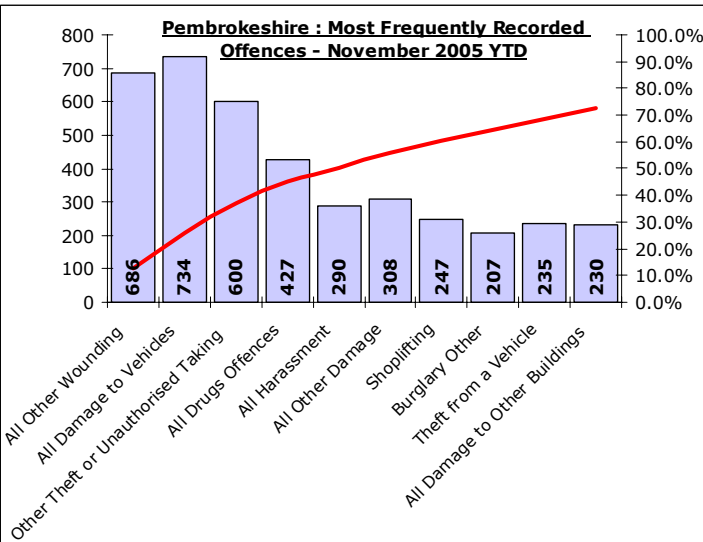
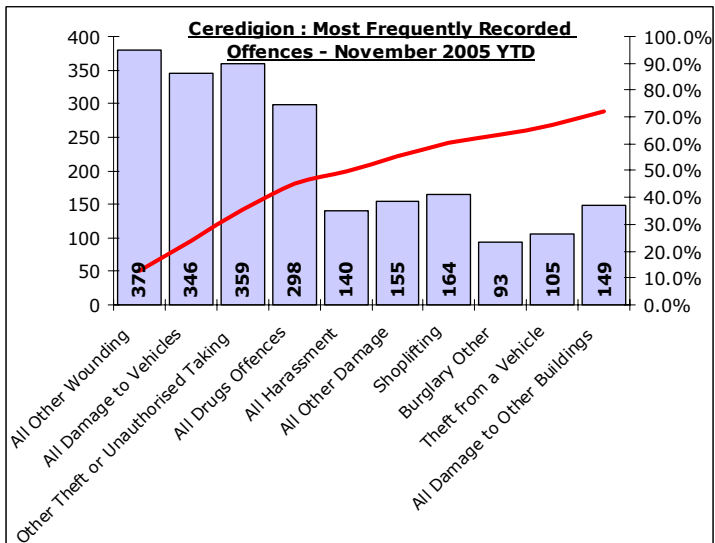
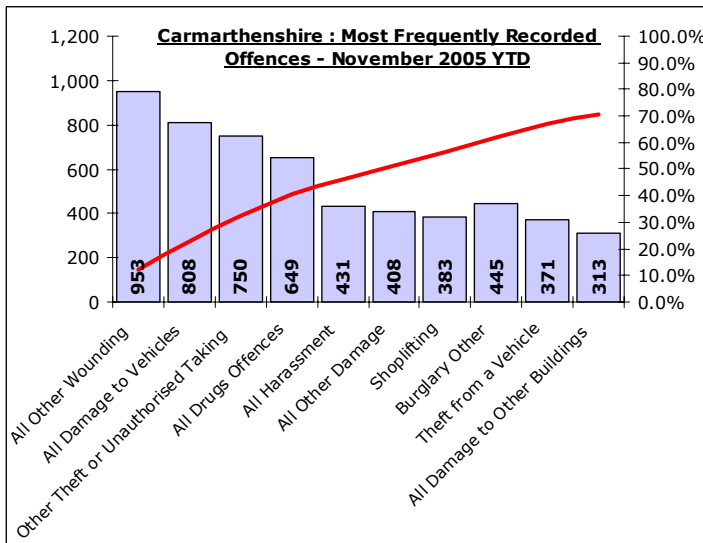
November 2005 YTD (Note : Divisional profiles are in the same sequence as forces' most frequent categories – for comparison)



Recorded offences in each category in order of volume.

(Note these can include a number of sub-categories)

The cumulative contribution of these offence categories toward the total volume of offences recorded.

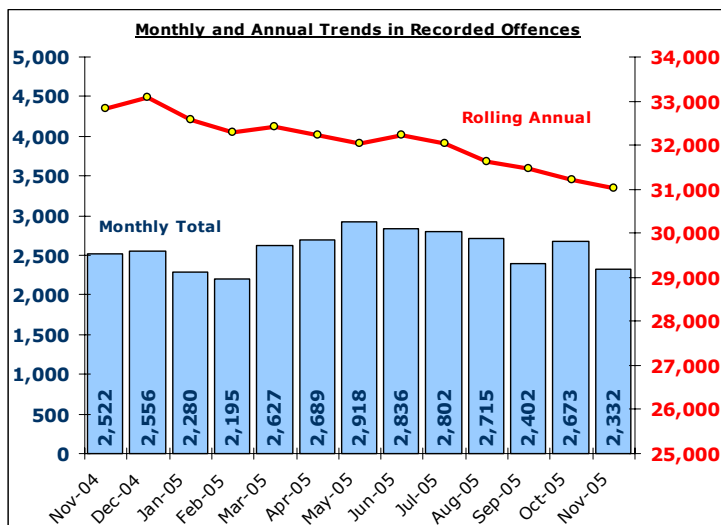


Total Recorded Crime

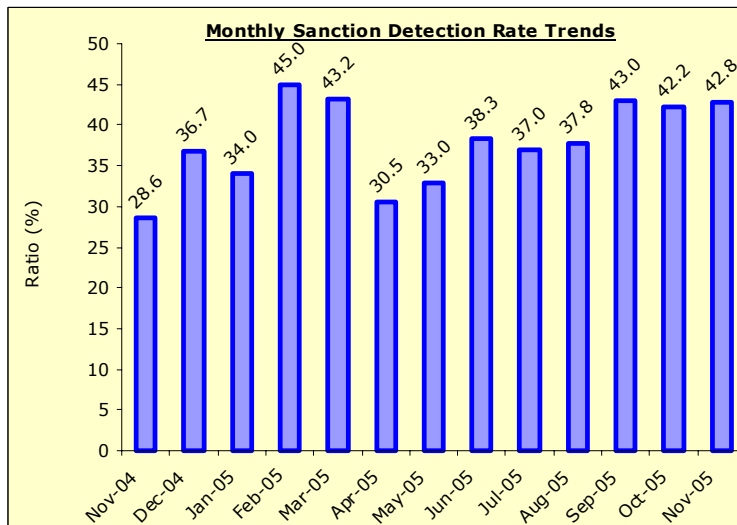
DYFED-POWYS POLICE

TARGET 2005/06 : NO TARGET

Recorded Crime Levels – November 2005

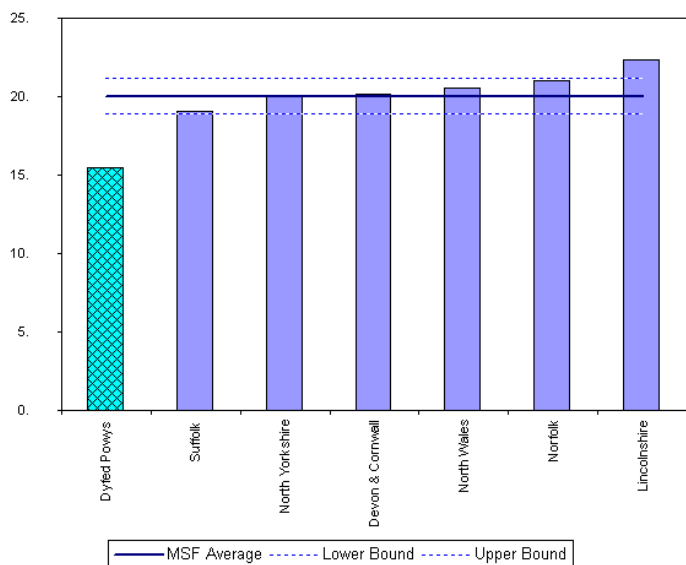


Monthly Sanction Detection Rates – November 2005

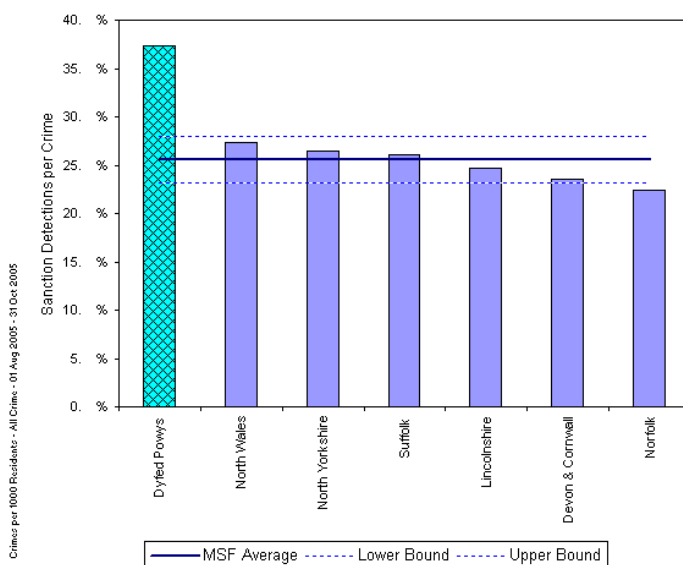


Total Recorded Crimes: November 2005 YTD	November 2005 YTD			Detection Rates YTD		Annual Trends - SPL Y		
	Crimes	Sanction Dets	Total Dets	Sanction %	Total %	Crimes SPL Y	Change	% Change
FORCE	21,367	8,091	9,436	37.9%	44.2%	22,750	- 1,383	- 6.1%
CARMS	7,787	2,853	3,261	36.6%	41.9%	8,876	- 1,089	- 12.3%
CERED	3,044	1,230	1,448	40.4%	47.6%	3,156	- 112	- 3.5%
PEMBS	5,444	1,992	2,406	36.6%	44.2%	5,799	- 355	- 6.1%
POWYS	5,092	2,016	2,321	39.6%	45.6%	4,919	+ 173	+ 3.5%

MSF – Crimes per 1000 Residents 01 August 2005 – 31 October 2005 (latest quarter)



MSF – Sanction detections (annual): 01 November 2004 – 31 October 2005

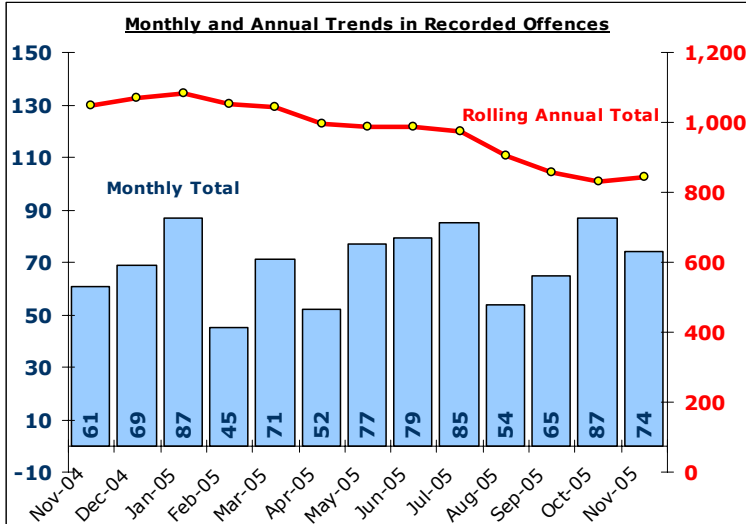


Domestic Burglary

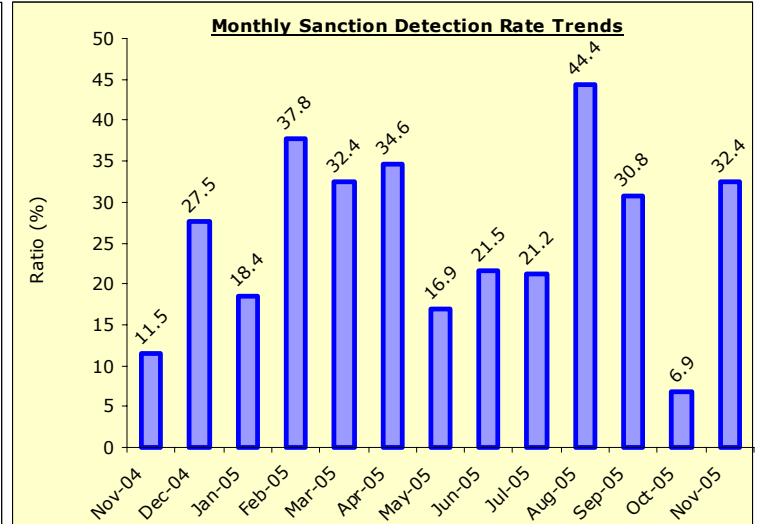
DYFED-POWYS POLICE

TARGET 2005/06 : 0% Increase in offences & 28% total detection rate

Recorded Crime Levels – November 2005

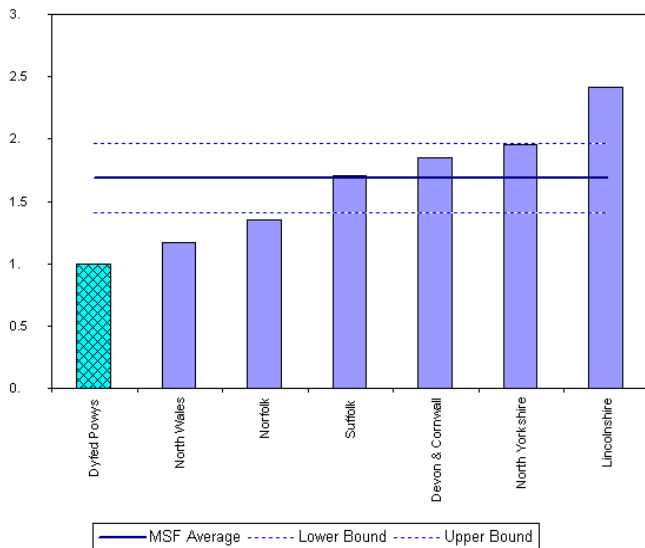


Monthly Sanction Detection Rates – November 2005



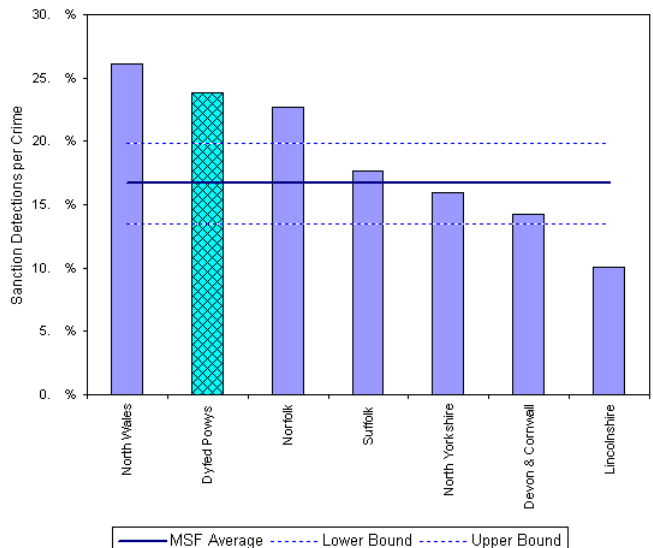
Total Domestic Burglary: November 2005 YTD	November 2005 YTD			Detection Rates YTD		Annual Trends - SPLY		
	Crimes	Sanction Dets	Total Dets	Sanction %	Total %	Crimes SPLY	Change	% Change
FORCE	573	140	146	24.4%	25.5%	770	- 197	- 25.6%
CARMS	245	63	63	25.7%	25.7%	335	- 90	- 26.9%
CERED	63	17	17	27.0%	27.0%	86	- 23	- 26.7%
PEMBS	129	32	38	24.8%	29.5%	186	- 57	- 30.6%
POWYS	136	28	28	20.6%	20.6%	163	- 27	- 16.6%

MSF – Crimes per 1000 Residents 01 August 2005 – 31 October 2005 (latest quarter)



Crimes per 1000 Households - Domestic Burglary - 01 Aug 2005 - 31 Oct 2005

MSF – Sanction detections (annual): 01 November 2004 – 31 October 2005



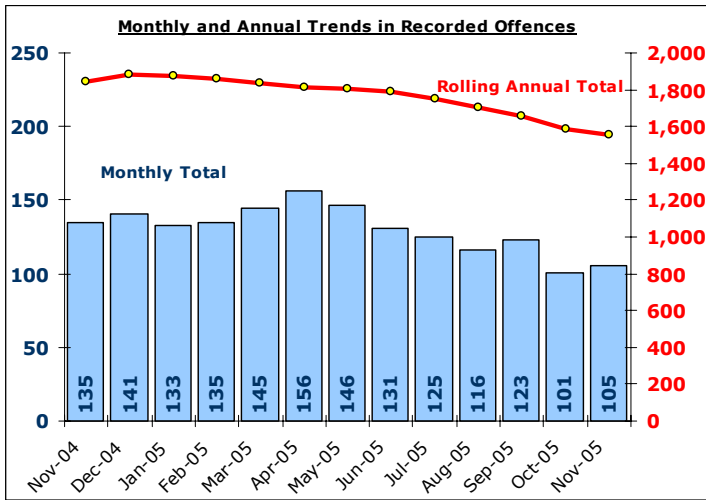
BarChart MSF - Sanction Detections per Crime-Dyfed Powys-Domestic Burglary-01 Nov 2004 - 31 Oct 2005

Other Burglary

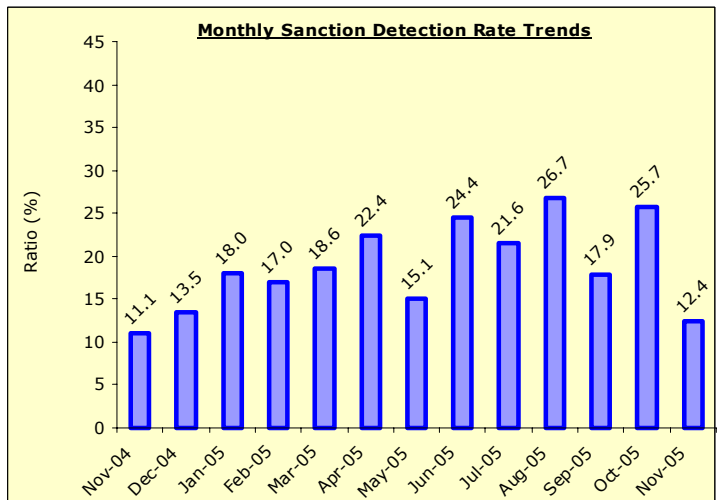
DYFED-POWYS POLICE

TARGET 2005/06 : No Target

Recorded Crime Levels – November 2005

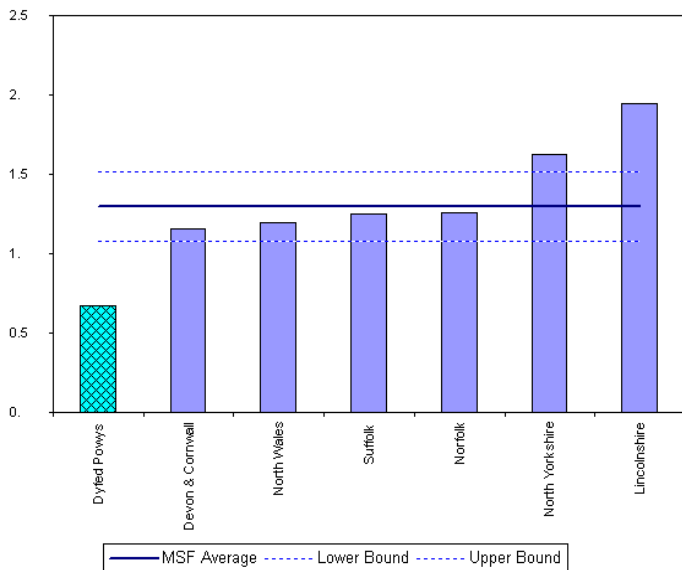


Monthly Sanction Detection Rates – November 2005

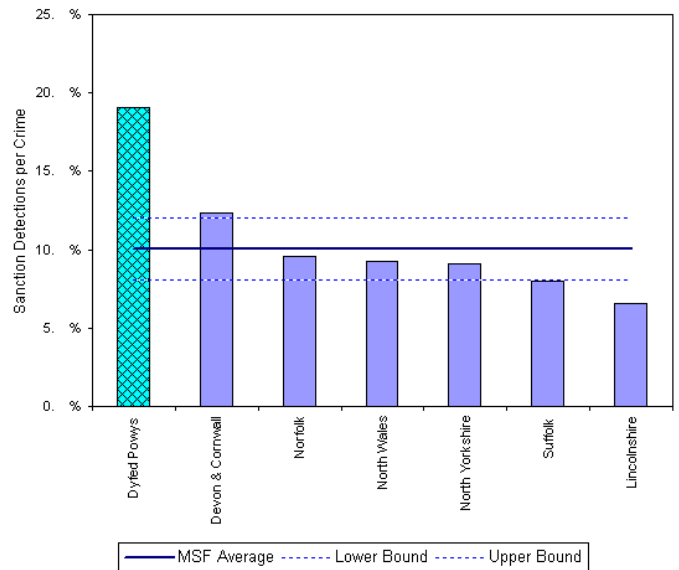


Total Other Burglary Crimes: November 2005 YTD	November 2005 YTD			Detection Rates YTD		Annual Trends - SPLY		
	Crimes	Sanction Dets	Total Dets	Sanction %	Total %	Crimes SPLY	Change	% Change
FORCE	1,003	208	219	20.7%	21.8%	1,279	- 276	- 21.6%
CARMS	445	91	93	20.4%	20.9%	623	- 178	- 28.6%
CERED	93	13	16	14.0%	17.2%	145	- 52	- 35.9%
PEMBS	207	43	46	20.8%	22.2%	234	- 27	- 11.5%
POWYS	258	61	64	23.6%	24.8%	277	- 19	- 6.9%

MSF – Crimes per 1000 Residents 01 August 2005 – 31 October 2005 (latest quarter)



MSF – Sanction detections (annual): 01 November 2004 – 31 October 2005

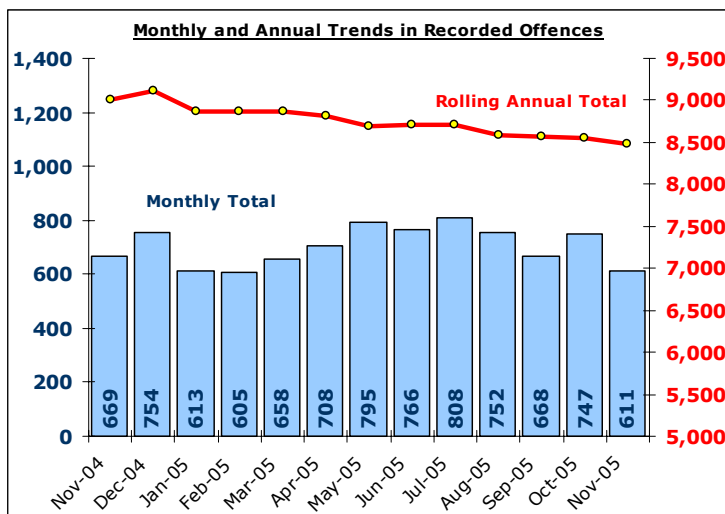


Total Violent Crime

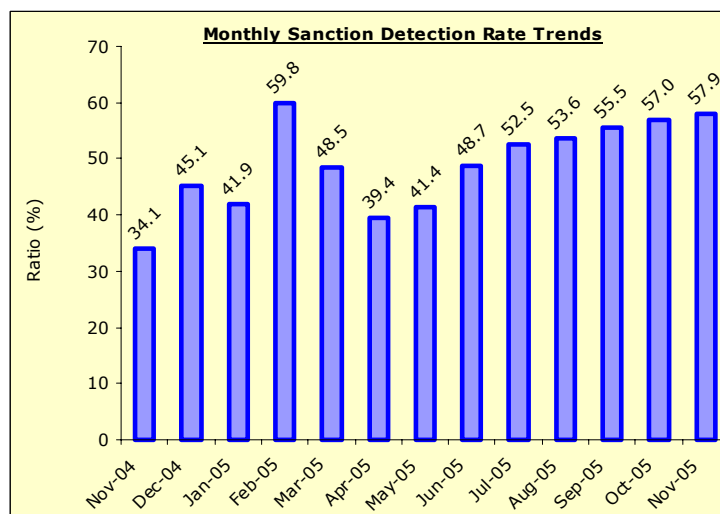
DYFED-POWYS POLICE

TARGET 2005/06 – 3% Reduction in offences & 60% total detection rate

Recorded Crime Levels – November 2005

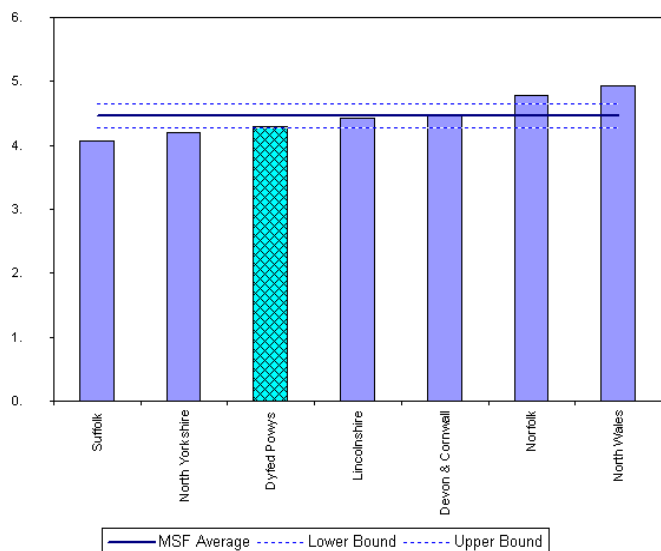


Monthly Sanction Detection Rates – November 2005



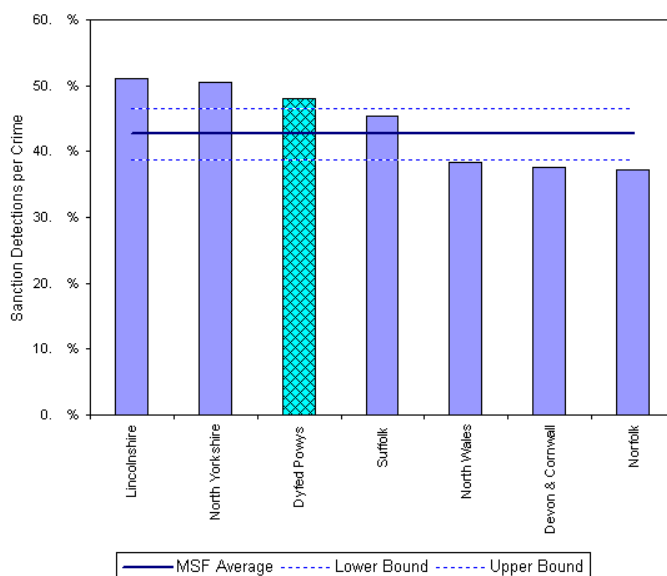
Total Violent Crimes: November 2005 YTD	November 2005 YTD			Detection Rates YTD		Annual Trends - SPLY		
	Crimes	Sanction Dets	Total Dets	Sanction %	Total %	Crimes SPLY	Change	% Change
FORCE	5,855	2,959	3,754	50.5%	64.1%	6,229	- 374	- 6.0%
CARMS	2,047	983	1,220	48.0%	59.6%	2,318	- 271	- 11.7%
CERED	778	401	537	51.5%	69.0%	957	- 179	- 18.7%
PEMBS	1,405	692	933	49.3%	66.4%	1,570	- 165	- 10.5%
POWYS	1,625	883	1,064	54.3%	65.5%	1,384	+ 241	+ 17.4%

MSF – Crimes per 1000 Residents 01 August 2005 – 31 October 2005 (latest quarter)



Crimes per 1000 Residents - Violent Crime - 01 Aug 2005 - 31 Oct 2005

MSF – Sanction detections (annual): 01 November 2004 – 31 October 2005



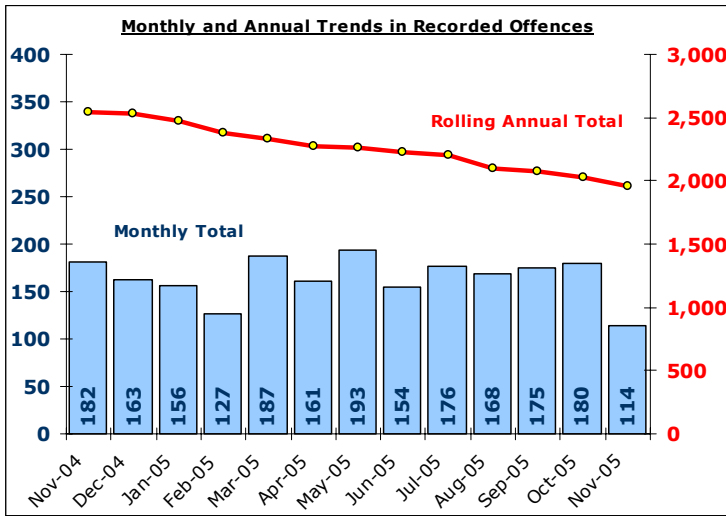
BarChart MSF - Sanction Detections per Crime-Dyfed Powys-Violent Crime-01 Nov 2004 - 31 Oct 2005

Total Vehicle Crime

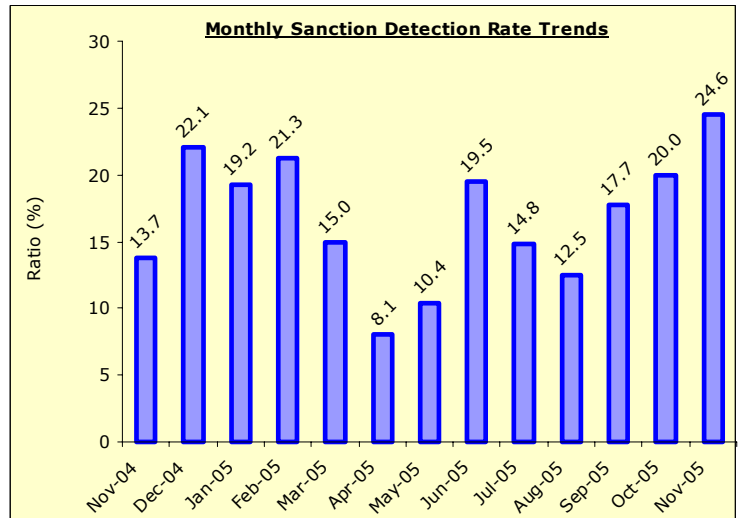
DYFED-POWYS POLICE

TARGET 2005/06 : 0% Increase in offences & 20% total detection rate

Recorded Crime Levels – November 2005

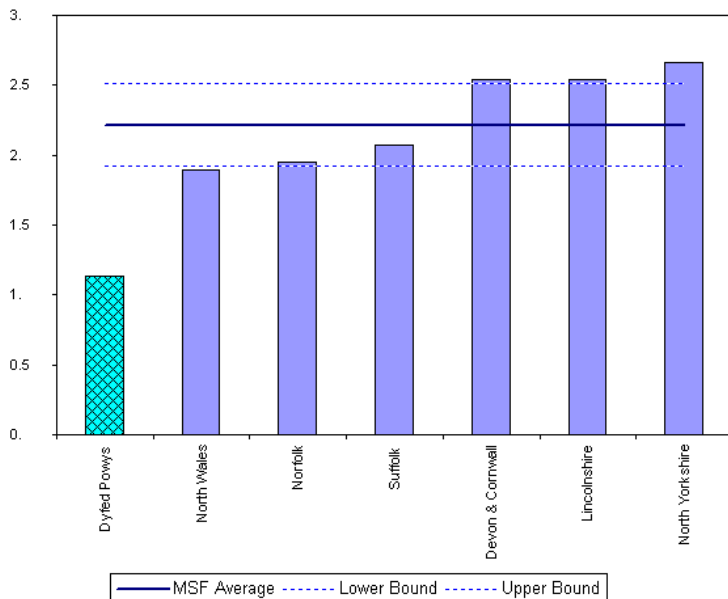


Monthly Sanction Detection Rates – November 2005

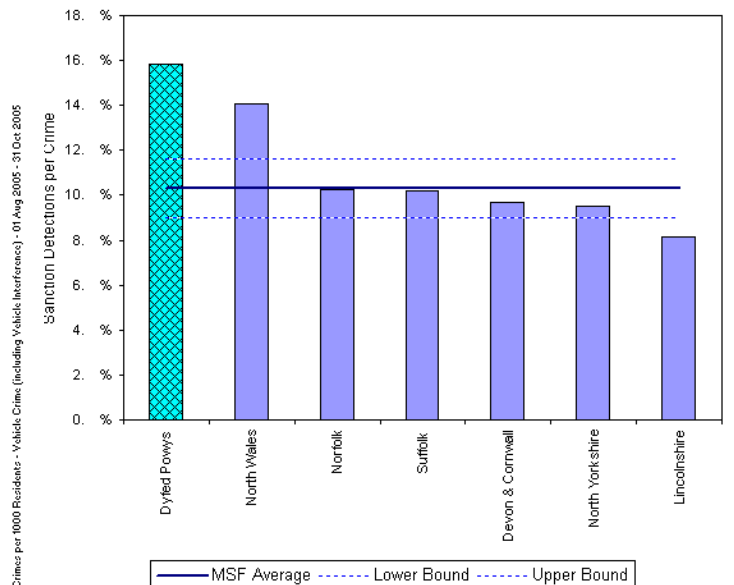


Total Vehicle Crimes: November 2005 YTD	November 2005 YTD			Detection Rates YTD		Annual Trends - SPL Y		
	Crimes	Sanction Dets	Total Dets	Sanction %	Total %	Crimes SPL Y	Change	% Change
FORCE	1,321	205	223	15.5%	16.9%	1,698	- 377	- 22.2%
CARMS	555	82	87	14.8%	15.7%	716	- 161	- 22.5%
CERED	147	25	28	17.0%	19.0%	155	- 8	- 5.2%
PEMBS	333	51	57	15.3%	17.1%	468	- 135	- 28.8%
POWYS	286	47	51	16.4%	17.8%	359	- 73	- 20.3%

MSF – Crimes per 1000 Residents 01 August 2005 – 31 October 2005 (latest quarter)



MSF – Sanction detections (annual): 01 November 2004 – 31 October 2005

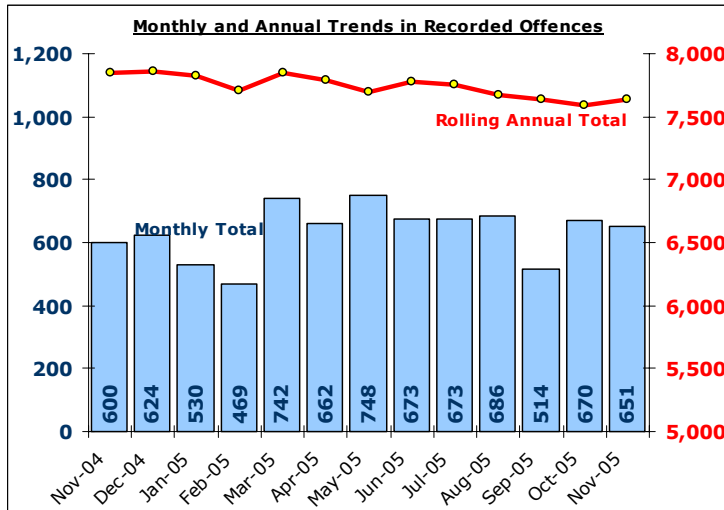


Total Criminal Damage

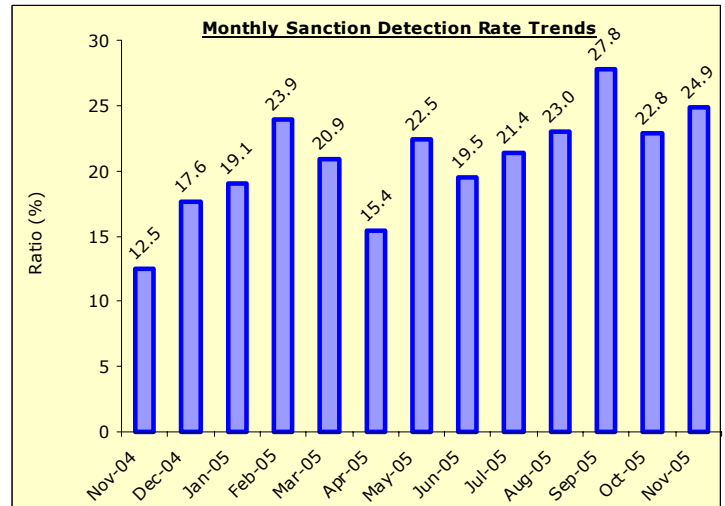
EXCLUDES ARSON % THREAT TO COMMIT CRIMINAL DAMAGE (HOC 56 & 59)

TARGET 2005/06 : NO TARGET

Recorded Crime Levels – November 2005

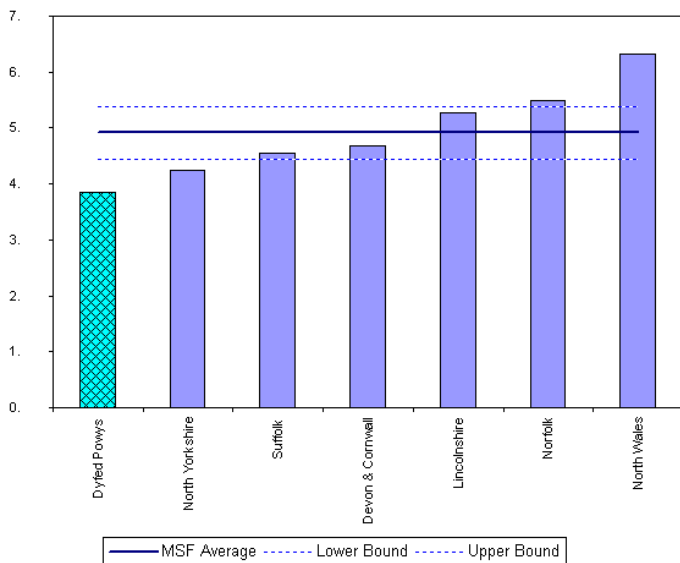


Monthly Sanction Detection Rates – November 2005

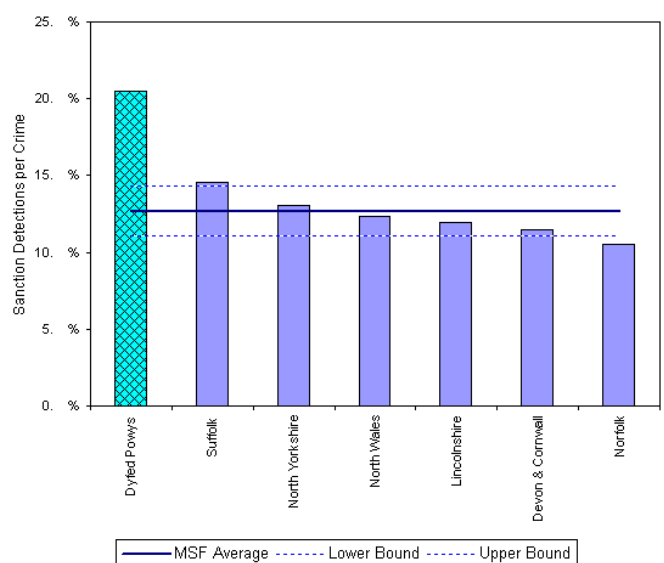


Total Criminal Damage: November 2005 YTD	November 2005 YTD			Detection Rates YTD		Annual Trends - SPL Y		
	Crimes	Sanction Dets	Total Dets	Sanction %	Total %	Crimes SPL Y	Change	% Change
FORCE	5,277	1,161	1,426	22.0%	27.0%	5,486	- 209	- 3.8%
CARMS	1,869	373	446	20.0%	23.9%	2,090	- 221	- 10.6%
CERED	767	167	197	21.8%	25.7%	650	+ 117	+ 18.0%
PEMBS	1,521	337	433	22.2%	28.5%	1,589	- 68	- 4.3%
POWYS	1,120	284	350	25.4%	31.3%	1,157	- 37	- 3.2%

MSF – Crimes per 1000 Residents 01 August 2005 – 31 October 2005 (latest quarter)



MSF – Sanction detections (annual): 01 November 2004 – 31 October 2005



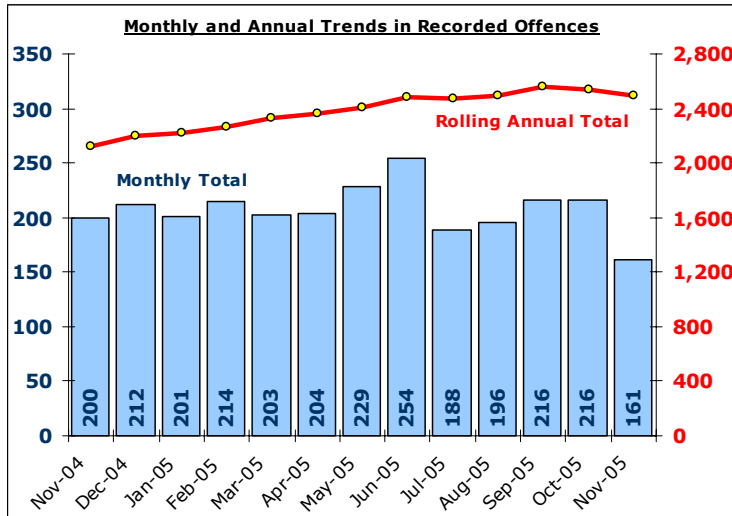
BarChart MSF - Sanction Detections per Crime-Dyfed Powys-Criminal Damage (exc 59) 01 Nov 2004 - 31 Oct 2005

Total Drug Offences

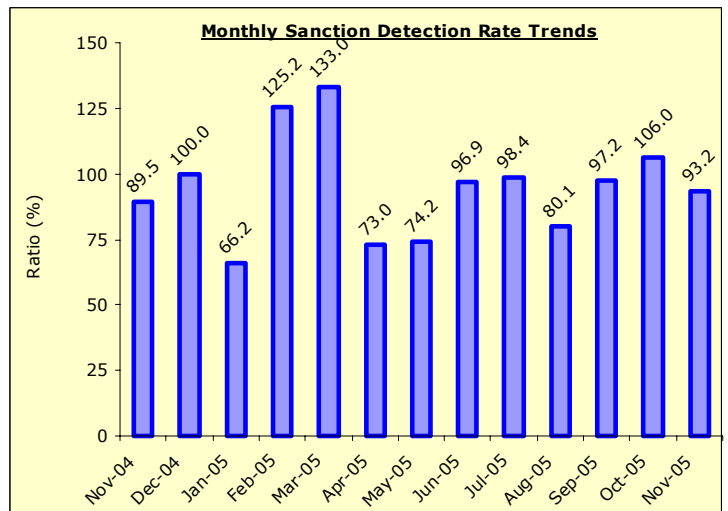
DYFED-POWYS POLICE

TARGET 2005/06 : NO TARGET

Recorded Crime Levels – November 2005

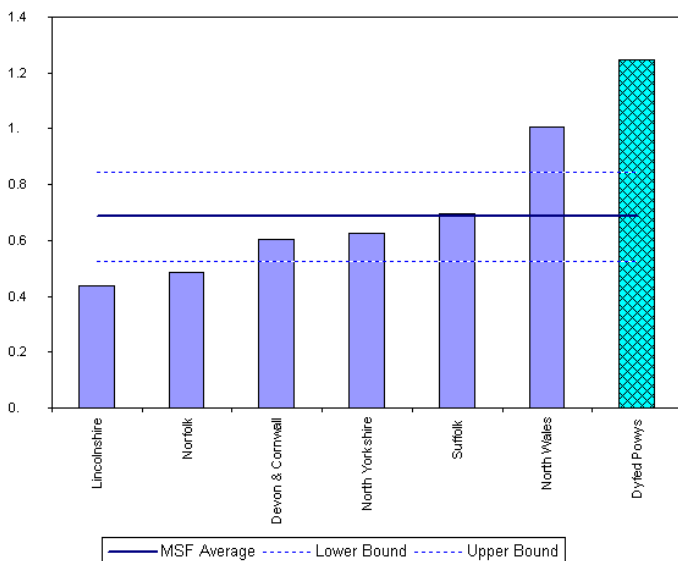


Monthly Sanction Detection Rates – November

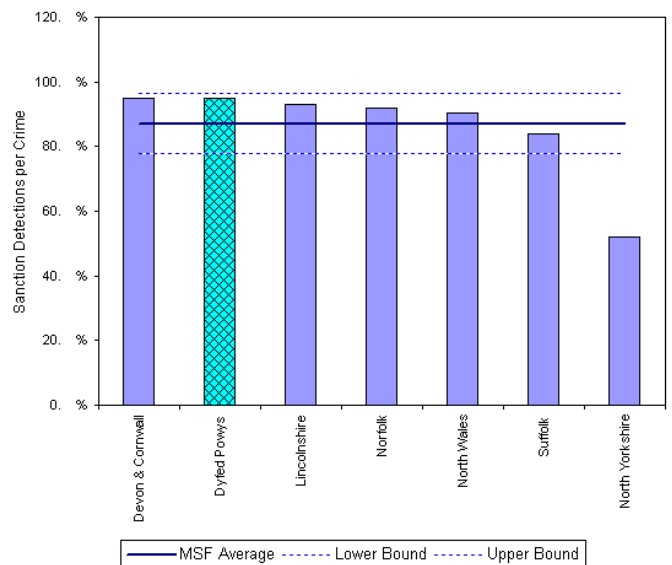


Total Drug Offences: November 2005 YTD	November 2005 YTD			Detection Rates YTD		Annual Trends - SPL Y		
	Crimes	Sanction Dets	Total Dets	Sanction %	Total %	Crimes SPL Y	Change	% Change
FORCE	1,664	1,496	1,600	89.9%	96.2%	1,497	+ 167	+ 11.2%
CARMS	649	576	631	88.8%	97.2%	581	+ 68	+ 11.7%
CERED	298	285	295	95.6%	99.0%	271	+ 27	+ 10.0%
PEMBS	427	375	396	87.8%	92.7%	401	+ 26	+ 6.5%
POWYS	290	260	278	89.7%	95.9%	244	+ 46	+ 18.9%

MSF – Crimes per 1000 Residents 01 August 2005 – 31 October 2005 (latest quarter)



MSF – Sanction detections (annual): 01 November 2004 – 31 October 2005



Section Level Sanction Detection Summary

DYFED-POWYS POLICE

TARGET 2005/06 : 31% SANCTION DETECTION RATE

Sanction Detections Performance November 2005 YTD: Total Recorded

Sanction Detection Rate	Recorded	Detected	Det Ratio	Recorded	Diff	% Change
THE FORCE	21,367	8,091	37.9%	22,750	- 1,383	- 6.1%
Carmarthenshire	7,787	2,853	36.6%	8,876	- 1,089	- 12.3%
Ammanford (AA)	960	415	43.2%	1,017	- 57	- 5.6%
Carmarthen (AC)	1,874	772	41.2%	2,127	- 253	- 11.9%
Llanelli (AL)	3,854	1,270	33.0%	4,590	- 736	- 16.0%
Towy Gwendraeth (AT)	1,099	396	36.0%	1,142	- 43	- 3.8%
Ceredigion	3,044	1,230	40.4%	3,156	- 112	- 3.5%
Aberystwyth (BA)	1,643	697	42.4%	1,633	+ 10	+ 0.6%
Aberaeron (BB)	309	112	36.2%	402	- 93	- 23.1%
Cardigan (BC)	716	266	37.2%	748	- 32	- 4.3%
Lampeter (BL)	376	155	41.2%	373	+ 3	+ 0.8%
Pembrokeshire	5,444	1,992	36.6%	5,799	- 355	- 6.1%
Fishguard (CF)	635	215	33.9%	663	- 28	- 4.2%
Haverfordwest (CH)	1,381	514	37.2%	1,531	- 150	- 9.8%
Milford Haven (CM)	1,049	405	38.6%	1,214	- 165	- 13.6%
Pembroke Dock (CP)	1,366	510	37.3%	1,248	+ 118	+ 9.5%
Tenby (CT)	1,013	348	34.4%	1,143	- 130	- 11.4%
Powys	5,092	2,016	39.6%	4,919	+ 173	+ 3.5%
Brecon (DB)	1,307	504	38.6%	1,156	+ 151	+ 13.1%
Llandrindod Wells (DL)	901	360	40.0%	998	- 97	- 9.7%
Newtown (DN)	1,612	617	38.3%	1,369	+ 243	+ 17.8%
Welshpool (DW)	864	378	43.8%	921	- 57	- 6.2%
Ystradgynlais (DY)	408	157	38.5%	475	- 67	- 14.1%

Sanction Detection Performance November 2005 YTD: Domestic Burglary, Violent Crime & Vehicle Crime

Sanction Detections	Total Domestic Burglary			Total Violent Crime			Total Vehicle Crime		
	Recorded	Detected	Det Ratio	Recorded	Detected	Det Ratio	Recorded	Detected	Det Ratio
THE FORCE	573	140	24.4%	5,855	2,959	50.5%	1,321	205	15.5%
Carmarthenshire	245	63	25.7%	2,047	983	48.0%	555	82	14.8%
Ammanford (AA)	20	9	45.0%	199	94	47.2%	59	9	15.3%
Carmarthen (AC)	34	8	23.5%	533	295	55.3%	104	18	17.3%
Llanelli (AL)	150	31	20.7%	1,044	453	43.4%	317	43	13.6%
Towy Gwendraeth (AT)	41	15	36.6%	271	141	52.0%	75	12	16.0%
Ceredigion	63	17	27.0%	778	401	51.5%	147	25	17.0%
Aberystwyth (BA)	39	11	28.2%	420	233	55.5%	66	9	13.6%
Aberaeron (BB)	3	2	66.7%	77	44	57.1%	21	1	4.8%
Cardigan (BC)	16	3	18.8%	188	81	43.1%	34	6	17.6%
Lampeter (BL)	5	1	20.0%	93	43	46.2%	26	9	34.6%
Pembrokeshire	129	32	24.8%	1,405	692	49.3%	333	51	15.3%
Fishguard (CF)	9	3	33.3%	158	69	43.7%	41	6	14.6%
Haverfordwest (CH)	42	9	21.4%	421	191	45.4%	49	7	14.3%
Milford Haven (CM)	24	8	33.3%	306	149	48.7%	53	12	22.6%
Pembroke Dock (CP)	32	5	15.6%	301	148	49.2%	89	9	10.1%
Tenby (CT)	22	7	31.8%	219	135	61.6%	101	17	16.8%
Powys	136	28	20.6%	1,625	883	54.3%	286	47	16.4%
Brecon (DB)	21	2	9.5%	401	238	59.4%	86	9	10.5%
Llandrindod Wells (DL)	33	9	27.3%	308	183	59.4%	42	6	14.3%
Newtown (DN)	53	12	22.6%	542	251	46.3%	71	13	18.3%
Welshpool (DW)	24	5	20.8%	236	140	59.3%	51	14	27.5%
Ystradgynlais (DY)	5	0	0.0%	138	71	51.4%	36	5	13.9%

Target Contribution Summary - Carmarthenshire

DYFED-POWYS POLICE

GREEN/RED indicates current performance **consistent** or **not consistent** with force target reduction & detection rate

CARMARTHENSHIRE		April-November YTD		Last Year		Indicator
CRIME		Performance	Indicator	Performance	Indicator	Change & Detection
Total Crime Recorded (per 1,000 population)	7789	45.1	8878	51.4		-12.3%
Total Detections (% rate)	3261	41.9%	3409	38.4%		41.9%
Burglary Dwelling (per 1,000 households)	246	3.4	335	4.6		-26.6%
Total Detections (% rate)	63	25.6%	76	22.7%		25.6%
Total Violent Crime (per 1,000 population)	2048	11.8	2319	13.4		-11.7%
Total Detections (% rate)	1220	59.6%	1324	57.1%		59.6%
Autocrime per (1,000 population)	555	3.2	716	4.1		-22.5%
Total Detections (% rate)	87	15.7%	143	20.0%		15.7%
Ammanford		April-November YTD		Last Year		Indicator
CRIME		Performance	Indicator	Performance	Indicator	Change & Detection
Total Crime Recorded (per 1,000 population)	960	29.4	1017	31.1		-5.6%
Total Detections (% rate)	464	48.3%	472	46.4%		48.3%
Burglary Dwelling (per 1,000 households)	20	1.4	27	2.0		-25.9%
Total Detections (% rate)	9	45.0%	8	29.6%		45.0%
Total Violent Crime (per 1,000 population)	199	6.1	274	8.4		-27.4%
Total Detections (% rate)	115	57.8%	178	65.0%		57.8%
Autocrime per (1,000 population)	59	1.8	69	2.1		-14.5%
Total Detections (% rate)	10	16.9%	12	17.4%		16.9%
Carmarthen		April-November YTD		Last Year		Indicator
CRIME		Performance	Indicator	Performance	Indicator	Change & Detection
Total Crime Recorded (per 1,000 population)	1874	37.9	2124	43.0		-11.8%
Total Detections (% rate)	853	45.5%	947	44.6%		45.5%
Burglary Dwelling (per 1,000 households)	#N/A	#N/A	#N/A	#N/A		#N/A
Total Detections (% rate)	#N/A	#N/A	#N/A	#N/A		#N/A
Total Violent Crime (per 1,000 population)	533	10.8	591	12.0		-9.8%
Total Detections (% rate)	347	65.1%	363	61.4%		65.1%
Autocrime per (1,000 population)	104	2.1	104	2.1		0.0%
Total Detections (% rate)	18	17.3%	11	10.6%		17.3%
Llanelli Rural		April-November YTD		Last Year		Indicator
CRIME		Performance	Indicator	Performance	Indicator	Change & Detection
Total Crime Recorded (per 1,000 population)	1402	134.4	1735	166.3		-19.2%
Total Detections (% rate)	576	41.1%	633	36.5%		41.1%
Burglary Dwelling (per 1,000 households)	100	22.1	149	32.9		-32.9%
Total Detections (% rate)	18	18.0%	38	25.5%		18.0%
Total Violent Crime (per 1,000 population)	387	37.1	438	42.0		-11.6%
Total Detections (% rate)	263	68.0%	268	61.2%		68.0%
Autocrime per (1,000 population)	122	11.7	226	21.7		-46.0%
Total Detections (% rate)	19	15.6%	65	28.8%		15.6%
Llanelli Town		April-November YTD		Last Year		Indicator
CRIME		Performance	Indicator	Performance	Indicator	Change & Detection
Total Crime Recorded (per 1,000 population)	2348	46.9	2904	58.0		-19.1%
Total Detections (% rate)	912	38.8%	945	32.5%		38.8%
Burglary Dwelling (per 1,000 households)	55	2.5	72	3.3		-23.6%
Total Detections (% rate)	13	23.6%	12	16.7%		23.6%
Total Violent Crime (per 1,000 population)	619	12.4	693	13.8		-10.7%
Total Detections (% rate)	336	54.3%	352	50.8%		54.3%
Autocrime per (1,000 population)	178	3.6	276	5.5		-35.5%
Total Detections (% rate)	23	12.9%	53	19.2%		12.9%
Towy/Gwenraeth		April-November YTD		Last Year		Indicator
CRIME		Performance	Indicator	Performance	Indicator	Change & Detection
Total Crime Recorded (per 1,000 population)	1099	36.3	1143	37.8		-3.8%
Total Detections (% rate)	442	40.2%	431	37.7%		40.2%
Burglary Dwelling (per 1,000 households)	#N/A	#N/A	#N/A	#N/A		#N/A
Total Detections (% rate)	#N/A	#N/A	#N/A	#N/A		#N/A
Total Violent Crime (per 1,000 population)	271	9.0	265	8.8		2.3%
Total Detections (% rate)	161	59.4%	160	60.4%		59.4%
Autocrime per (1,000 population)	75	2.5	99	3.3		-24.2%
Total Detections (% rate)	13	17.3%	16	16.2%		17.3%

Target Contribution Summary - Ceredigion

DYFED-POWYS POLICE

GREEN/RED indicates current performance **consistent** or **not consistent** with force target reduction & detection rate

CEREDIGION		April-November YTD		Last Year		Indicator
CRIME	Performance	Indicator	Performance	Indicator	Change & Detection	
Total Crime Recorded (per 1,000 population)	3044	40.6	3156	42.1	-3.5%	
Total Detections (% rate)	1448	47.6%	1284	40.7%	47.6%	
Burglary Dwelling (per 1,000 households)	63	2.0	86	2.8	-26.7%	
Total Detections (% rate)	17	27.0%	19	22.1%	27.0%	
Total Violent Crime (per 1,000 population)	778	10.4	957	12.8	-18.7%	
Total Detections (% rate)	537	69.0%	467	48.8%	69.0%	
Autocrime per (1,000 population)	147	2.0	155	2.1	-5.2%	
Total Detections (% rate)	28	19.0%	29	18.7%	19.0%	
Ceredigion North		April-November YTD		Last Year		Indicator
CRIME	Performance	Indicator	Performance	Indicator	Change & Detection	
Total Crime Recorded (per 1,000 population)	1643	51.7	1632	51.3	0.7%	
Total Detections (% rate)	779	47.4%	727	44.5%	47.4%	
Burglary Dwelling (per 1,000 households)	39	3.1	25	2.0	56.0%	
Total Detections (% rate)	11	28.2%	8	32.0%	28.2%	
Total Violent Crime (per 1,000 population)	420	13.2	492	15.5	-14.6%	
Total Detections (% rate)	288	68.6%	251	51.0%	68.6%	
Autocrime per (1,000 population)	66	2.1	63	2.0	4.8%	
Total Detections (% rate)	10	15.2%	10	15.9%	15.2%	
Ceredigion South		April-November YTD		Last Year		Indicator
CRIME	Performance	Indicator	Performance	Indicator	Change & Detection	
Total Crime Recorded (per 1,000 population)	1401	32.6	1524	35.5	-8.1%	
Total Detections (% rate)	669	47.8%	557	36.5%	47.8%	
Burglary Dwelling (per 1,000 households)	24	1.3	61	3.3	-60.7%	
Total Detections (% rate)	6	25.0%	11	18.0%	25.0%	
Total Violent Crime (per 1,000 population)	358	8.3	465	10.8	-23.0%	
Total Detections (% rate)	249	69.6%	216	46.5%	69.6%	
Autocrime per (1,000 population)	81	1.9	92	2.1	-12.0%	
Total Detections (% rate)	18	22.2%	19	20.7%	22.2%	

Ceredigion South is an area used for comparison purposes only. It incorporates the three section areas of Lampeter/Aberaeron and Cardigan. Details on these three discrete areas are also included here for information.

Aberaeron		April-November YTD		Last Year		Indicator
CRIME	Performance	Indicator	Performance	Indicator	Change & Detection	
Total Crime Recorded (per 1,000 population)	309	24.4	402	31.7	-23.1%	
Total Detections (% rate)	130	42.1%	137	34.1%	42.1%	
Burglary Dwelling (per 1,000 households)	3	0.5	20	3.7	-85.0%	
Total Detections (% rate)	2	66.7%	3	15.0%	66.7%	
Total Violent Crime (per 1,000 population)	77	6.1	109	8.6	-29.4%	
Total Detections (% rate)	49	63.6%	50	45.9%	63.6%	
Autocrime per (1,000 population)	21	1.7	20	1.6	5.0%	
Total Detections (% rate)	2	9.5%	4	20.0%	9.5%	
Cardigan		April-November YTD		Last Year		Indicator
CRIME	Performance	Indicator	Performance	Indicator	Change & Detection	
Total Crime Recorded (per 1,000 population)	716	38.0	748	39.6	-4.3%	
Total Detections (% rate)	331	46.2%	284	38.0%	46.2%	
Burglary Dwelling (per 1,000 households)	16	1.9	24	2.9	-33.3%	
Total Detections (% rate)	3	18.8%	4	16.7%	18.8%	
Total Violent Crime (per 1,000 population)	188	10.0	236	12.5	-20.3%	
Total Detections (% rate)	129	68.6%	113	47.9%	68.6%	
Autocrime per (1,000 population)	34	1.8	44	2.3	-22.7%	
Total Detections (% rate)	6	17.6%	10	22.7%	17.6%	
Lampeter		April-November YTD		Last Year		Indicator
CRIME	Performance	Indicator	Performance	Indicator	Change & Detection	
Total Crime Recorded (per 1,000 population)	376	32.4	374	32.3	0.5%	
Total Detections (% rate)	208	55.3%	136	36.4%	55.3%	
Burglary Dwelling (per 1,000 households)	5	1.1	17	3.6	-70.6%	
Total Detections (% rate)	1	20.0%	4	23.5%	20.0%	
Total Violent Crime (per 1,000 population)	93	8.0	120	10.4	-22.5%	
Total Detections (% rate)	71	76.3%	53	44.2%	76.3%	
Autocrime per (1,000 population)	26	2.2	28	2.4	-7.1%	
Total Detections (% rate)	10	38.5%	5	17.9%	38.5%	

Target Contribution Summary - Pembrokeshire

DYFED-POWYS POLICE

GREEN/RED indicates current performance **consistent** or **not consistent** with force target reduction & total detection rate

PEMBROKESHIRE		April-November YTD		Last Year		Indicator
CRIME	Performance	Indicator	Performance	Indicator	Change & Detection	
Total Crime Recorded (per 1,000 population)	5444	47.7	5801	50.8	-6.2%	
Total Detections (% rate)	2406	44.2%	2364	40.8%	44.2%	
Burglary Dwelling (per 1,000 households)	129	2.7	186	3.9	-30.6%	
Total Detections (% rate)	37	28.7%	45	24.2%	28.7%	
Total Violent Crime (per 1,000 population)	1405	12.3	1571	13.8	-10.6%	
Total Detections (% rate)	933	66.4%	997	63.5%	66.4%	
Autocrime per (1,000 population)	333	2.9	468	4.1	-28.8%	
Total Detections (% rate)	57	17.1%	79	16.9%	17.1%	
Fishguard		April-November YTD		Last Year		Indicator
CRIME	Performance	Indicator	Performance	Indicator	Change & Detection	
Total Crime Recorded (per 1,000 population)	635	24.0	663	25.0	-4.2%	
Total Detections (% rate)	273	43.0%	301	45.4%	43.0%	
Burglary Dwelling (per 1,000 households)	9	0.8	26	2.3	-65.4%	
Total Detections (% rate)	4	44.4%	9	34.6%	44.4%	
Total Violent Crime (per 1,000 population)	158	6.0	143	5.4	10.5%	
Total Detections (% rate)	103	65.2%	108	75.5%	65.2%	
Autocrime per (1,000 population)	41	1.5	64	2.4	-35.9%	
Total Detections (% rate)	8	19.5%	15	23.4%	19.5%	
Haverfordwest		April-November YTD		Last Year		Indicator
CRIME	Performance	Indicator	Performance	Indicator	Change & Detection	
Total Crime Recorded (per 1,000 population)	1381	69.1	1531	76.6	-9.8%	
Total Detections (% rate)	610	44.2%	663	43.3%	44.2%	
Burglary Dwelling (per 1,000 households)	42	5.0	60	7.1	-30.0%	
Total Detections (% rate)	11	26.2%	12	20.0%	26.2%	
Total Violent Crime (per 1,000 population)	421	21.1	470	23.5	-10.4%	
Total Detections (% rate)	255	60.6%	290	61.7%	60.6%	
Autocrime per (1,000 population)	49	2.5	105	5.3	-53.3%	
Total Detections (% rate)	7	14.3%	17	16.2%	14.3%	
Milford Haven		April-November YTD		Last Year		Indicator
CRIME	Performance	Indicator	Performance	Indicator	Change & Detection	
Total Crime Recorded (per 1,000 population)	1049	43.0	1215	49.8	-13.7%	
Total Detections (% rate)	478	45.6%	527	43.4%	45.6%	
Burglary Dwelling (per 1,000 households)	24	2.4	27	2.7	-11.1%	
Total Detections (% rate)	11	45.8%	10	37.0%	45.8%	
Total Violent Crime (per 1,000 population)	306	12.5	316	13.0	-3.2%	
Total Detections (% rate)	198	64.7%	212	67.1%	64.7%	
Autocrime per (1,000 population)	53	2.2	81	3.3	-34.6%	
Total Detections (% rate)	16	30.2%	27	33.3%	30.2%	
Pembroke Dock		April-November YTD		Last Year		Indicator
CRIME	Performance	Indicator	Performance	Indicator	Change & Detection	
Total Crime Recorded (per 1,000 population)	1366	71.5	1248	65.3	9.5%	
Total Detections (% rate)	637	46.6%	457	36.6%	46.6%	
Burglary Dwelling (per 1,000 households)	32	4.0	35	4.3	-8.6%	
Total Detections (% rate)	5	15.6%	6	17.1%	15.6%	
Total Violent Crime (per 1,000 population)	301	15.8	344	18.0	-12.5%	
Total Detections (% rate)	209	69.4%	204	59.3%	69.4%	
Autocrime per (1,000 population)	89	4.7	136	7.1	-34.6%	
Total Detections (% rate)	9	10.1%	8	5.9%	10.1%	
Tenby		April-November YTD		Last Year		Indicator
CRIME	Performance	Indicator	Performance	Indicator	Change & Detection	
Total Crime Recorded (per 1,000 population)	1013	41.9	1144	47.4	-11.5%	
Total Detections (% rate)	408	40.3%	416	36.4%	40.3%	
Burglary Dwelling (per 1,000 households)	22	2.1	38	3.7	-42.1%	
Total Detections (% rate)	7	31.8%	8	21.1%	31.8%	
Total Violent Crime (per 1,000 population)	219	9.1	298	12.3	-26.5%	
Total Detections (% rate)	168	76.7%	183	61.4%	76.7%	
Autocrime per (1,000 population)	101	4.2	82	3.4	23.2%	
Total Detections (% rate)	17	16.8%	12	14.6%	16.8%	

Target Contribution Summary - Powys

DYFED-POWYS POLICE

GREEN/RED indicates current performance **consistent** or **not consistent** with force target reduction & detection rate

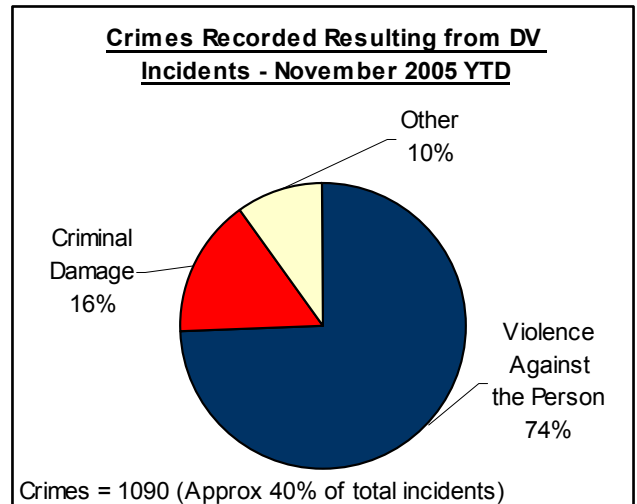
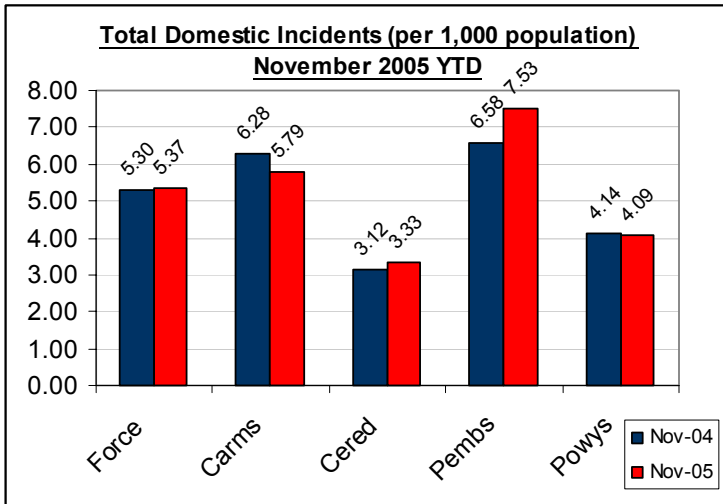
POWYS		April-November YTD		Last Year		Indicator
CRIME	Performance	Indicator	Performance	Indicator	Change & Detection	
Total Crime Recorded (per 1,000 population)	5092	40.3	4920	38.9	3.5%	
Total Detections (% rate)	2321	45.6%	1988	40.4%	45.6%	
Burglary Dwelling (per 1,000 households)	136	2.5	163	3.0	-16.6%	
Total Detections (% rate)	28	20.6%	28	17.2%	20.6%	
Total Violent Crime (per 1,000 population)	1625	12.9	1384	11.0	17.4%	
Total Detections (% rate)	1064	65.5%	819	59.2%	65.5%	
Autocrime per (1,000 population)	286	2.3	360	2.8	-20.6%	
Total Detections (% rate)	51	17.8%	87	24.2%	17.8%	
Brecon		April-November YTD		Last Year		Indicator
CRIME	Performance	Indicator	Performance	Indicator	Change & Detection	
Total Crime Recorded (per 1,000 population)	1307	51.1	1157	45.2	13.0%	
Total Detections (% rate)	596	45.6%	447	38.6%	45.6%	
Burglary Dwelling (per 1,000 households)	21	2.0	29	2.7	-27.6%	
Total Detections (% rate)	2	9.5%	5	17.2%	9.5%	
Total Violent Crime (per 1,000 population)	401	15.7	334	13.1	20.1%	
Total Detections (% rate)	290	72.3%	191	57.2%	72.3%	
Autocrime per (1,000 population)	86	3.4	89	3.5	-3.4%	
Total Detections (% rate)	9	10.5%	18	20.2%	10.5%	
Llandrindod Wells		April-November YTD		Last Year		Indicator
CRIME	Performance	Indicator	Performance	Indicator	Change & Detection	
Total Crime Recorded (per 1,000 population)	901	31.9	998	35.4	-9.7%	
Total Detections (% rate)	433	48.1%	435	43.6%	48.1%	
Burglary Dwelling (per 1,000 households)	33	2.7	45	3.6	-26.7%	
Total Detections (% rate)	9	27.3%	8	17.8%	27.3%	
Total Violent Crime (per 1,000 population)	308	10.9	280	9.9	10.0%	
Total Detections (% rate)	228	74.0%	176	62.9%	74.0%	
Autocrime per (1,000 population)	42	1.5	66	2.3	-36.4%	
Total Detections (% rate)	8	19.0%	10	15.2%	19.0%	
Newtown		April-November YTD		Last Year		Indicator
CRIME	Performance	Indicator	Performance	Indicator	Change & Detection	
Total Crime Recorded (per 1,000 population)	1612	45.9	1369	39.0	17.8%	
Total Detections (% rate)	694	43.1%	500	36.5%	43.1%	
Burglary Dwelling (per 1,000 households)	53	3.5	68	4.5	-22.1%	
Total Detections (% rate)	12	22.6%	7	10.3%	22.6%	
Total Violent Crime (per 1,000 population)	542	15.4	383	10.9	41.5%	
Total Detections (% rate)	302	55.7%	223	58.2%	55.7%	
Autocrime per (1,000 population)	71	2.0	72	2.0	-1.4%	
Total Detections (% rate)	13	18.3%	19	26.4%	18.3%	
Welshpool		April-November YTD		Last Year		Indicator
CRIME	Performance	Indicator	Performance	Indicator	Change & Detection	
Total Crime Recorded (per 1,000 population)	864	33.8	921	36.1	-6.2%	
Total Detections (% rate)	413	47.8%	397	43.1%	47.8%	
Burglary Dwelling (per 1,000 households)	24	2.2	14	1.3	71.4%	
Total Detections (% rate)	5	20.8%	4	28.6%	20.8%	
Total Violent Crime (per 1,000 population)	236	9.2	245	9.6	-3.7%	
Total Detections (% rate)	157	66.5%	151	61.6%	66.5%	
Autocrime per (1,000 population)	51	2.0	78	3.1	-34.6%	
Total Detections (% rate)	16	31.4%	28	35.9%	31.4%	
Ystradgynlais		April-November YTD		Last Year		Indicator
CRIME	Performance	Indicator	Performance	Indicator	Change & Detection	
Total Crime Recorded (per 1,000 population)	408	34.4	475	40.0	-14.1%	
Total Detections (% rate)	185	45.3%	209	44.0%	45.3%	
Burglary Dwelling (per 1,000 households)	5	1.0	7	1.4	-28.6%	
Total Detections (% rate)	0	0.0%	4	57.1%	0.0%	
Total Violent Crime (per 1,000 population)	138	11.6	142	12.0	-2.8%	
Total Detections (% rate)	87	63.0%	78	54.9%	63.0%	
Autocrime per (1,000 population)	36	3.0	55	4.6	-34.5%	
Total Detections (% rate)	5	13.9%	12	21.8%	13.9%	

Domestic Incidents

DYFED POWYS POLICE

SPI 8A TARGET - 80% OF INCIDENTS (WITH A POWER OF ARREST) LEADING TO ARREST
LOCAL TARGET – 30% OF TOTAL INCIDENTS INVOLVING REPEAT VICTIMS

Please note figures provided here are provisional only. For the latest detailed information please contact your local Public Protection Unit (PPU) for further details.



Section & Divisional Summary – November 2005 YTD

Section	Incidents		Arrests		Sanction Detections			Repeat Victims	Apr-Nov 2004 (SPLY)	
	Total Incidents	Power Of Arrest	Arrests where POA	% POA	Crimes	Sanction Detections	% Sanction Detection	% Repeats (12mnts data)	Total Incidents	Annual % Change
Ammanford (AA)	113	41	33	80.5%	43	27	62.8%	12.9%	185	-38.9%
Carmarthen (AC)	210	92	80	87.0%	93	56	60.2%	20.2%	212	-0.9%
Llanelli (AL)	550	234	180	76.9%	259	153	59.1%	24.4%	549	0.2%
Towy Gwandraeth (AT)	155	63	53	84.1%	56	38	67.9%	21.2%	169	-8.3%
Carmarthenshire	1028	430	346	80.5%	451	274	60.8%	21.7%	1115	-7.8%
Aberystwyth (BA)	147	75	64	85.3%	64	46	71.9%	15.5%	122	20.5%
Aberaeron (BB)	21	13	8	61.5%	12	8	66.7%	19.4%	34	-38.2%
Cardigan (BC)	62	31	22	71.0%	36	24	66.7%	14.9%	68	-8.8%
Lampeter (BL)	30	15	11	73.3%	17	14	82.4%	18.9%	20	50.0%
Ceredigion	260	134	105	78.4%	129	92	71.3%	16.0%	244	6.6%
Fishguard (CF)	125	50	43	86.0%	51	33	64.7%	29.0%	90	38.9%
Haverfordwest (CH)	210	85	65	76.5%	83	47	56.6%	33.8%	193	8.8%
Milford Haven (CM)	208	82	60	73.2%	76	56	73.7%	32.7%	172	20.9%
Pembroke Dock (CP)	225	109	85	78.0%	81	58	71.6%	27.4%	217	3.7%
Tenby (CT)	115	52	44	84.6%	48	37	77.1%	24.6%	100	15.0%
Pembrokeshire	883	328	297	90.5%	339	231	68.1%	29.9%	772	14.4%
Brecon (DB)	112	51	51	100.0%	51	32	62.7%	18.7%	131	-14.5%
Llandrindod Wells (DL)	98	40	36	90.0%	46	32	69.6%	24.5%	92	6.5%
Newtown (DN)	170	79	74	93.7%	93	46	49.5%	21.7%	148	14.9%
Welshpool (DW)	83	32	31	96.9%	45	29	64.4%	21.9%	101	-17.8%
Ystradgynlais (DY)	72	31	29	93.5%	36	27	75.0%	24.5%	69	4.3%
Powys	535	233	221	94.8%	271	166	61.3%	22.0%	541	-1.1%
Force	2706	1125	969	86.1%	1190	763	64.1%	23.8%	2672	1.3%

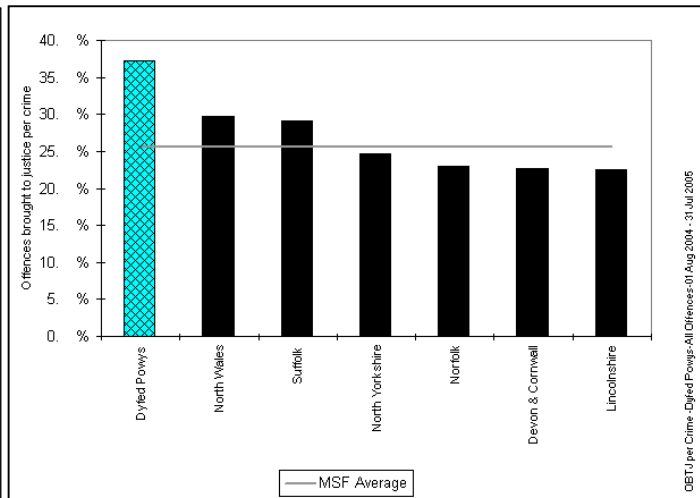
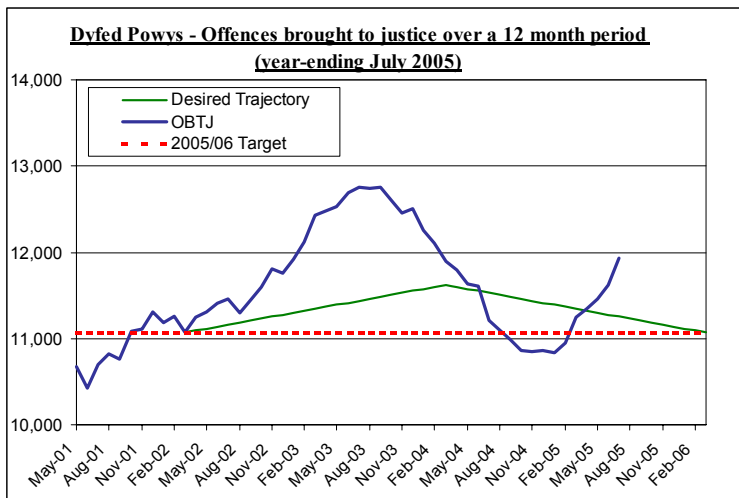
Source: LCS Recorded Domestic Incident Details (extracted 12/12/05)

NB – Repeat Victims performance is based on 12-months incident data and not only year-to-date performance.

Narrowing the Justice Gap - OFFENCES BROUGHT TO JUSTICE & SANCTION DETECTIONS

TARGET 2005/06 : 11,068 total OBTJ (Offences Brought to Justice)

Total Offences Brought to Justice (OBTJ) – Force & MSF Comparisons



Offences brought to justice – 12 monthly data	TIC	PND	Formal Warnings	Cautions	Convictions	OBTJ
Baseline: Apr 01 – Mar 02	420	-	-	3,698	6,900	11,068
Latest: August 04 – July 05	515	591	1,136	3,729	5,963	11,934
Change	+23%	-	-	+1%	-14%	+8%
2005/06 Force Target (0%- 11,068 OBTJ)	YES	n/a	YES	YES	NO	YES

Divisional Contribution Toward OBTJ Volumes – Approximate Latest

Please note this data is provided as a **guide only** - it is provided here for information.

Approx YTD	Jul-05 OBTJ	Target**	Diff from Target
Carmarthenshire	1550	1325	16.9%
Ceredigion	658	579	13.6%
Pembrokeshire	1102	980	12.4%
Powys	1031	806	28.0%
Force	4340	3690	17.6%

** - This is the target profile required to attain the end of year target of 11,068 OBTJ. (The divisional target breakdown is based on mirroring 2004/05 contribution toward total force sanction detections).

Sanction Detection Volume Performance YTD – Current Clear-Up Breakdown (Annual % Change)

The current volume of sanction detections (November 05 YTD) is up 19% on the same period last year to stand at 7,093 (up 1,125 from 5,968*).

Area – November YTD	Charged	Summons	Cautioned	TIC	PND	F. Warning for Cannabis*	Total Sanction Dets
Carmarthenshire	1200 (+3%)	37 (-10%)	768 (+34%)	98 (-28%)	154 (25 SPLY)	255 (+29%)	2512 (+17%)
Ceredigion	492 (+5%)	41 (+52%)	382 (+15%)	40 (+38%)	26 (9 SPLY)	76 (+3%)	1057 (+12%)
Pembrokeshire	751 (+3%)	35 (-21%)	640 (+10%)	111 (25 SPLY)	102 (30 SPLY)	114 (-3%)	1753 (+15%)
Powys	788 (+13%)	78 (+95%)	604 (+33%)	76 (+38%)	149 (22 SPLY)	76 (+69%)	1771 (+35%)
Force	3231 (+5%)	191 (+9%)	2394 (+23%)	325 (-12%)	431 (86 SPLY)	521 (+23%)	7093 (+19%)

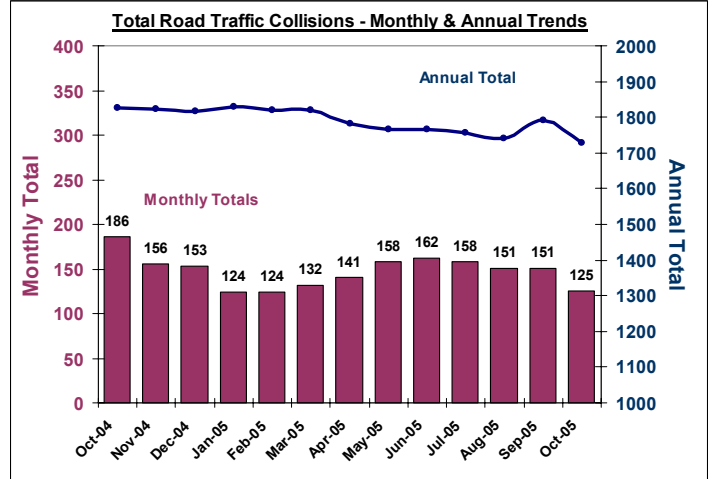
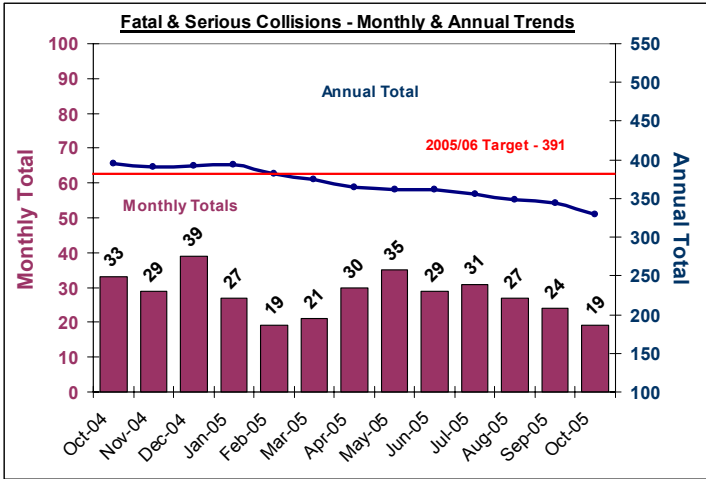
* - SPLY Data Approximate

Road Traffic Collisions

October Monthly Data Latest available

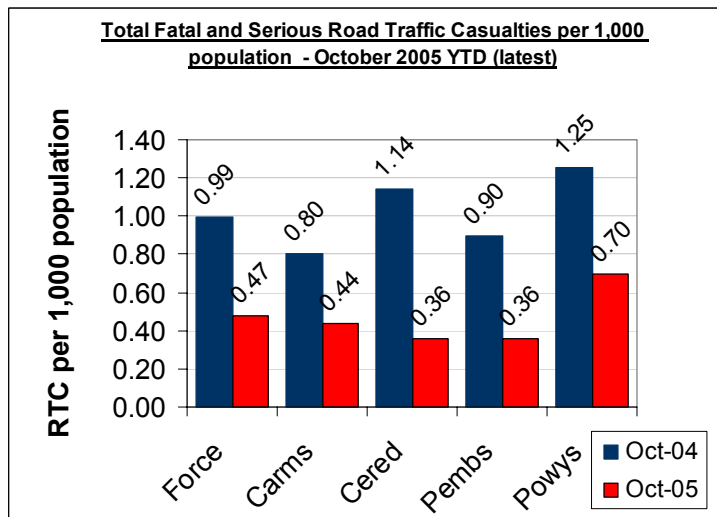
TARGET 2005/06 : 391 FATAL AND SERIOUS COLLISIONS (0.8 PER 1,000 POPULATION) – USING 2004 MID -YEAR ESTIMATES

Road Traffic Collisions – Monthly & Annual Trends (October 05 - latest data)



Performance YTD (October 2005 YTD - latest)	FORCE	Carms	Cered	Pembs	Powys
Fatal Road Collisions YTD	29	12	2	3	12
Serious & Fatal Road Collisions YTD	196	61	26	34	75
Indicator - Per 1,000 population	0.40	0.35	0.35	0.29	0.59
On-Target (0.8 end of year – 0.40 pro-rata)	YES	YES	YES	YES	NO
Fatal (SPLY)	28	9	4	3	12
Serious & Fatal (SPLY)	255	79	44	52	80

Road Traffic Casualties – 2010 Target Progress



October 2005 YTD (latest)	Force	Carms	Cered	Pembs	Powys
Number of people killed or seriously injured casualties	239	78	28	42	91
At 2010 Target Level*	YES	YES	YES	YES	YES
Number of Children (<=15 yrs) killed or seriously injured	18	5	4	4	5
At 2010 Target Level*	YES	YES	YES	YES	YES
Number of persons with slight injuries	1309	477	214	292	326
At 2010 Target Level*	NO	NO	NO	NO	NO

* 2010 Targets Established with Roads Policing Strategy, Operations Dept & National Road Policing Targets. Progress towards Pro-Rata year-end 2010 target illustrated here

Source: MAAP RTC Database 10/11/05

PPAF Statutory Performance Indicator Summary

Reported Quarterly

* - HOME OFFICE POLICE PERFORMANCE ASSESSMENT FRAMEWORK MEASURES

This Data is Updated Quarterly – Latest: Data

Activity	SPI Number	Indicator Description	Apr-Aug 2004 Performance	Apr-Aug 2005 Performance	Change	2005/06 End of Year Target
User Satisfaction Measures	1a*	Satisfaction of victims of domestic burglary, violent crime, vehicle crime and road traffic collisions with respect to - a) making contact with the Police	91.30%	92.3%	1.0%	NEW
	1b*	b) action taken by the Police	85.40%	87.5%	2.1%	NEW
	1c*	c) Being kept informed of progress	67.80%	74.4%	6.6%	NEW
	1d*	d) Their treatment by staff	92.10%	92.5%	0.4%	NEW
	1e*	e) the overall service provided	85.20%	85.8%	0.6%	NEW
Confidence	2a	Using the BCS, the % of people who think their local police do a good job	NEW	NEW	-	NEW
Fairness and Equality Measures	3a*	Satisfaction of victims of racist incidents with respect to the overall service provided	89%	66.7%	-22.2%	NEW
	3b*	From SPI 1(e), comparison of satisfaction for white users and users from visible minority ethnic groups with respect to the overall service provided.	NEW	NEW	NEW	NEW
	3c(i)	(i) % of PACE stop/searches which lead to arrest by ethnicity	N/A	N/A	N/A	N/A
	3c(ii)	(ii) % of other (non-PAEC) stop/searches which lead to arrest by ethnicity	N/A	N/A	N/A	N/A
	3d*	Comparison of percentage detected of violence against the person offences by ethnicity of the victim (sanction detections)	White - 31.8% Ethnic - 40.0%	White - 34.8% Ethnic - 24.2%	White +3% Ethnic -16%	White - 31% Ethnic - 31%
	3e	Proportion of police recruits (ethnic) compared to the proportion of people from minority ethnic groups in the economically active population.	(No ethnic recruits)	(No ethnic recruits)	-	NEW
	3f*	Ratio of officers from minority ethnic groups resigning to all officer resignations	00:02	00:02	NEW	NEW
	3g*	% of female police officers compared to overall Force strength.	18.4%	20.1%	1.7%	19%
Measures of Crime Levels	4a^	Using the British Crime Survey (a) the risk of personal crime; and	4%	8%	4.0%	8%
	4b^	(b) the risk of household crime.	12%	11%	-1.0%	11%
	5a	(a) Domestic Burglaries per 1,000 households.	2.35 (486 crimes)	1.67 (347 crimes)	-0.68 (-139 crimes)	5.06 (1042 crimes)
	5b	(b) Violent crime per 1,000 population.	8.22 (4101 crimes)	7.68 (3829 crimes)	-0.54 (272 crimes)	17.60 (8593 crimes)
	5c	(c) Robberies per 1,000 population.	0.03 (17 crimes)	0.04 (19 crimes)	+0.01 (+2 crimes)	0.1 (48 crimes)
	5d	(d) Vehicle crime per 1,000 population.	2.17 (1080 crimes)	1.71 (852 crimes)	-0.46 (228 crimes)	4.77 (2331 crimes)
	5e	(e) Life threatening crime and gun crime per 1,000 population.	0.07 (37 crimes)	0.11 (56 crimes)	+0.04 (+19 crimes)	0.28
Offences Brought to Justice Measures (OBTJ)	6a**	Number of notifiable/recorded offences resulting in convictions, caution or taken into consideration at court	1,826	2,006	+180 OBTJ (+9.9%)	11,068
	6b**	% of notifiable/recorded offences resulting in convictions, caution or taken into consideration at court	30.5%	34.9%	4.4%	NEW
Detection Measure	7a	% of notifiable/recorded offences resulting in charge, summons, caution or taken into consideration at court ('sanction detections')	29.0%	35.3%	6.3%	31%
Domestic Violence Measures	8a	Percentage of domestic violence incidents with a power of arrest where an arrest was made relating to the incident.	80.2% (498 arrests)	80.0% (597 arrests)	+99 arrests	80%
Traffic Measures	9a(i)**	(i) Number of people killed in under 30 days or seriously injured in road traffic collisions	146 fatal or serious collisions	122 fatal or serious collisions	-24 collisions	391 fatal or serious collisions
	9a(ii)**	(ii) Number of persons killed or seriously injured in road traffic collisions per 100million vehicle kilometres travelled.	2.97	2.48	-0.49	8.13
Quality of Life Measures	10a^	Using the British Crime Survey a) fear of crime	11%	9%	-2%	10%
	10b^	Perceptions of anti-social behaviour; and	NEW	NEW	NEW	NEW
	10c^	Perceptions of local drug use / drug dealing	NEW	NEW	NEW	NEW
Resource Use Measures	11a^	Percentage of police officer time spent on frontline duties	65.4%	-	-	68.5%
	12a	Delivery of cashable and non-cashable efficiency targets	NEW	NEW	NEW	NEW
	13a*	Average number of working hours lost due to sickness per police officer.	23.7 hours	16.8 hours	-29%	92.8 hours
	13b*	Average number of working hours lost due to sickness by police staff.	22.7 hours	19.5 hours	-14%	80.7 hours

* April-June Data : Latest Available

** - April-July Data : Latest Available

*** - April & May Data only Latest Available

^ - End of Year Data 2004/05 : Latest Available