



Heddlu Dyfed-Powys Police

CRIME TRENDS UPDATE December 2005

Contents:

Headline Statistics	2
Most Frequent Recorded Offences Profile	3
Recorded Crimes and Detection Rates	4
Domestic Burglaries and Detection Rates	5
Other Burglary and Detection Rates	6
Violent Crime and Detection Rates	7
Vehicle Crime and Detection Rates	8
Criminal Damage and Detection Rates	9
Drugs Statistics and Detection Rates	10
Section Level Sanction Detection Summary	11
Divisional Contribution to Targets	12
Domestic Incidents	16
User Satisfaction	17
Narrowing the Justice Gap	18
Road Traffic Collisions	19
PPAF Statutory Performance Indicator Summary	20

Heddlu Dyfed Powys Police: Corporate Services

Recorded Crime:

- Total Recorded Crime is down by 7% (-1,667 crimes) compared to the same period last year (SPLY) to stand at 23,639 crimes. The monthly figure for December 2005 stands at 2,272 – a fall of 11% (-284 offences) on the same month in 2004, and 3% (-60 offences) down on the preceding month November 2005.
- Recorded detection performance has a total detection rate for the force at 44% (10,432 total detections) compared with 40% the previous year. The volume of total detections has increased by 3% (+343 detections). The sanction detection rate stands at 38% - this is consistent with the target rate of 31% (compared with 30% last year). The volume of sanction detections has increased by 1,343 or 18%.

Domestic Burglary:

- Total Domestic Burglary offences are down by 26% (-219 crimes) compared to the same period last year (SPLY) to stand at 620 crimes. The monthly figure for December 2005 stands at 47 – a fall of 32% (-22 offences) on the same month in 2004, and a 36% (-27 offences) decrease on the preceding month November 2005.
- Recorded detection performance remains higher than last year, with the total detection rate for the force at 24% (151 detections) compared with 23% the previous year. The volume of total detections has decreased by 20% (-38) as a consequence of this substantial fall in offences. The sanction detection rate stands at 23% (up from 19% last year) with the volume of sanction detections falling by 8% (-13).

Violent Crimes:

- Total Violent crime remains down by 7% (-494 crimes) compared to the same period last year (SPLY) to stand at 6,489 crimes. The monthly figure for December 2005 stands at 634 – a fall of 16% (-120 offences) on the same month in 2004, but a 4% (+23 offences) increase on the preceding month November 2005.
- Recorded detection performance stands at a total detection rate for the force of 65% (4,197 detections) up from 59% last year. The volume of total detections has increased by 2% (+92) over this period. Furthermore the sanction detection rate stands at 51% (compared with 38% last year) with the volume recorded up by 27% (+704 sanction detections).

Vehicle Crime:

- Total Vehicle crime is down by 21% (-97 crimes) compared to the same period last year (SPLY) to stand at 1,464 crimes. The monthly figure for December 2005 stands at 143 – a fall of 12% (-20 offences) on the same month in 2004, but a 25% increase (+29 offences) on the preceding month November 2005.
- Recorded total detection stands at 18% (263 detections) down from 20% the previous year. The volume of total detections has decreased by 30% (-111) as a consequence this fall in recorded offences. The sanction detection rate stands at 17% (compared with 18% last year) with the volume down considerably (-88 sanction detections or 27%).

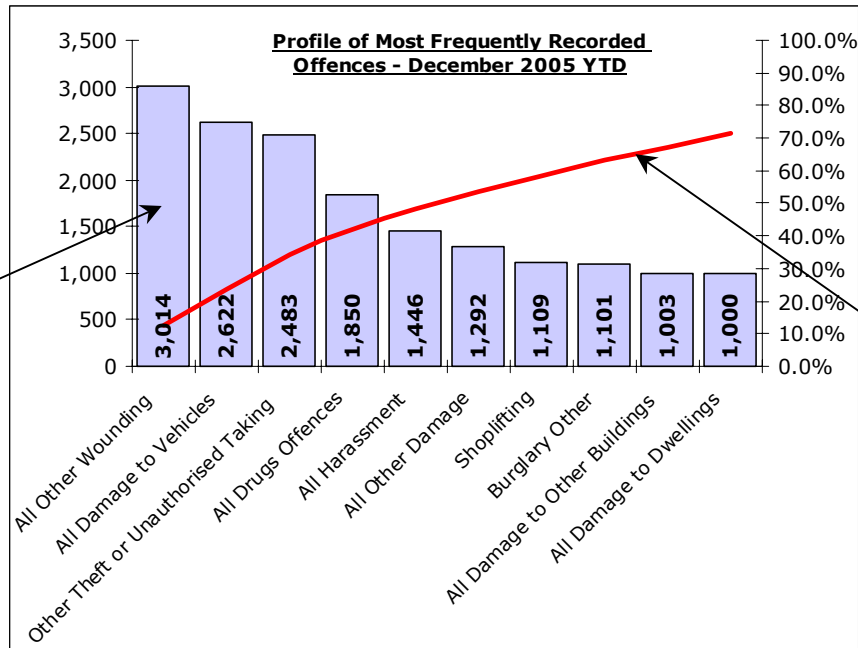
Criminal Damage:

- Total Criminal Damage has fallen by 3% (-193 crimes) compared to the same period last year (SPLY) to stand at 5,917 (excl Arson & Threat to Commit CD). The monthly figure for December 2005 stands at 640 – a rise of 3% (+16 offences) on the same month in 2004, but a decrease of 2% (-11) on the previous month November 2005.
- Recorded detection performance stands at a total detection rate for the force of 27% (1,567 detections) up from 24% last year. The volume of total detections has increased by 6% (+94) over this period. The sanction detection rate stands at 22% (compared with 16% last year) with the volume up a notable 30% over this period (+293 sanction detections).

Most Frequent Recorded Offences Profile

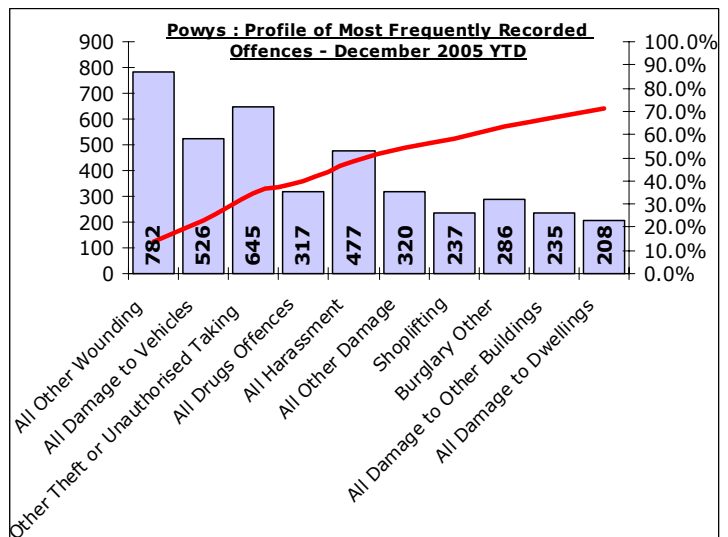
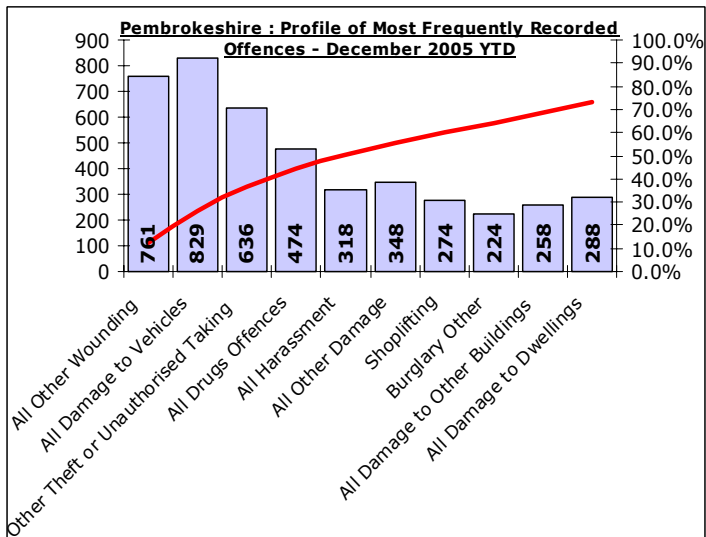
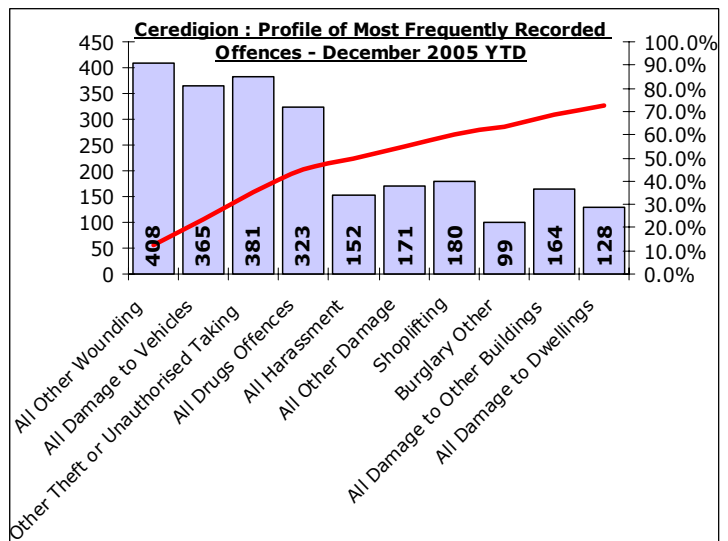
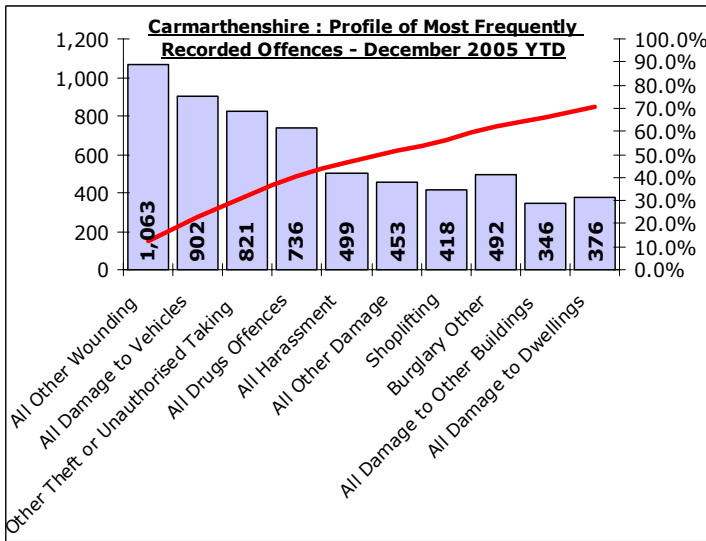
DYFED-POWYS POLICE

December 2005 YTD (Note : Divisional profiles are in the same sequence as forces' most frequent categories – for comparison)



Recorded offences in each category in order of volume.
(Note these can include a number of sub-categories)

The cumulative contribution of these offence categories toward the total volume of offences recorded.

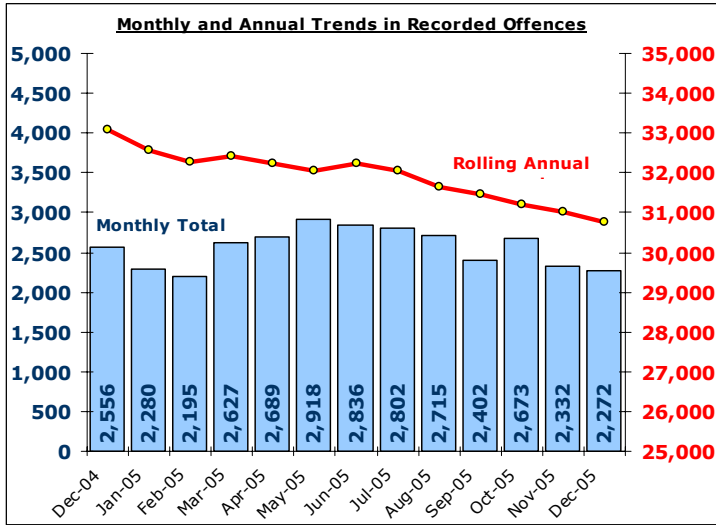


Total Recorded Crime

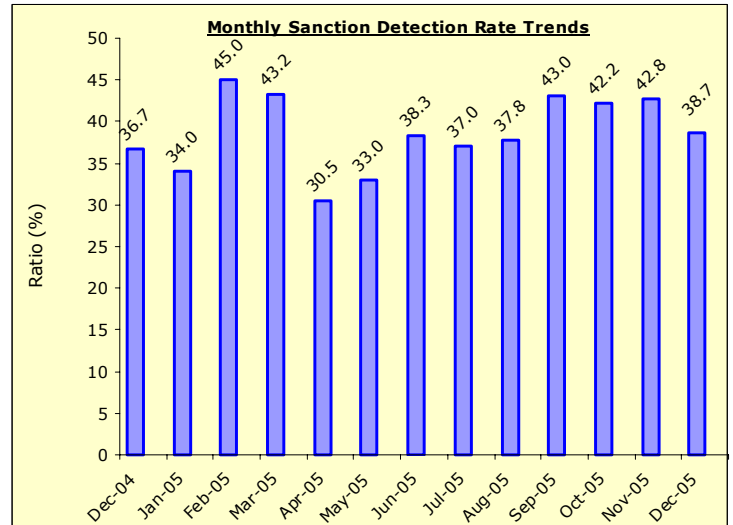
DYFED-POWYS POLICE

TARGET 2005/06 : NO TARGET

Recorded Crime Levels – December 2005

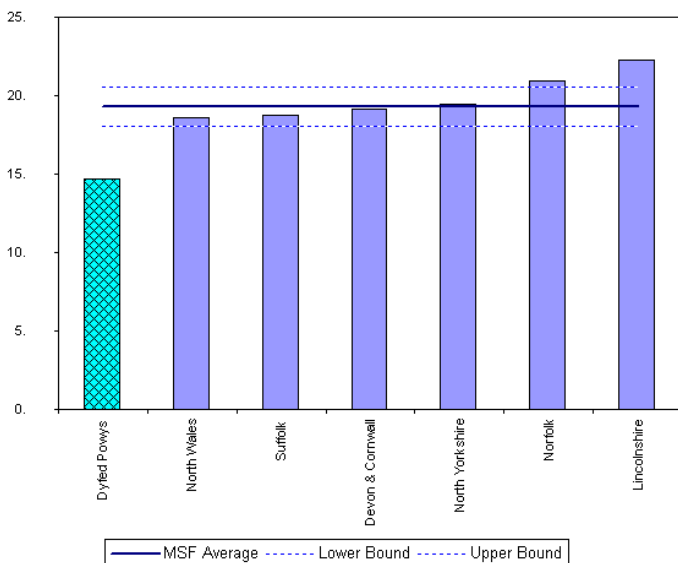


Monthly Sanction Detection Rates – December 2005



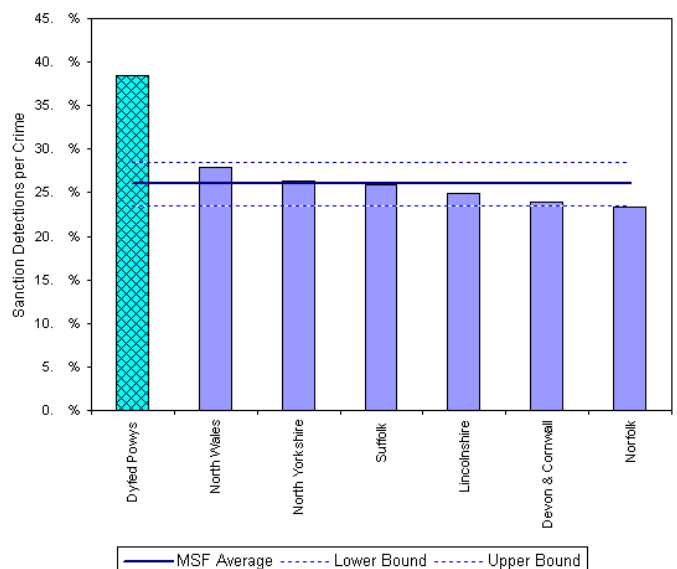
Total Recorded Crimes: December 2005 YTD	December 2005 YTD			Detection Rates YTD		Annual Trends - SPLY		
	Crimes	Sanction Dets	Total Dets	Sanction %	Total %	Crimes SPLY	Change	% Change
FORCE	23,639	8,970	10,432	37.9%	44.1%	25,306	- 1,667	- 6.6%
CARMS	8,660	3,170	3,606	36.6%	41.6%	9,806	- 1,146	- 11.7%
CERED	3,279	1,333	1,563	40.7%	47.7%	3,512	- 233	- 6.6%
PEMBS	6,032	2,239	2,681	37.1%	44.4%	6,480	- 448	- 6.9%
POWYS	5,668	2,228	2,582	39.3%	45.6%	5,508	+ 160	+ 2.9%

MSF – Crimes per 1000 Residents 01 September 2005 – 30 November 2005 (latest quarter)



Crimes per 1000 Residents - All Crime - 01 Sep 2005 - 30 Nov 2005

MSF – Sanction detections (annual): 01 December 2004 – 30 November 2005



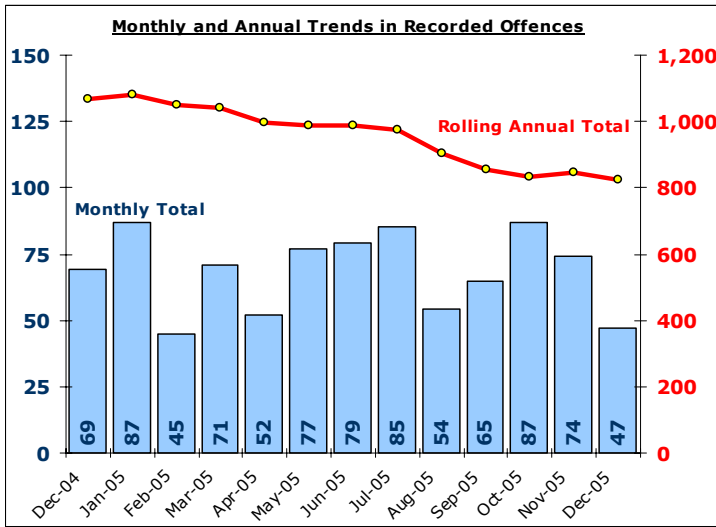
Bar chart MSF - Sanction Detections per Crime-Dyfed Powys-All Crime-01 Dec-2004 - 30 Nov 2005

Domestic Burglary

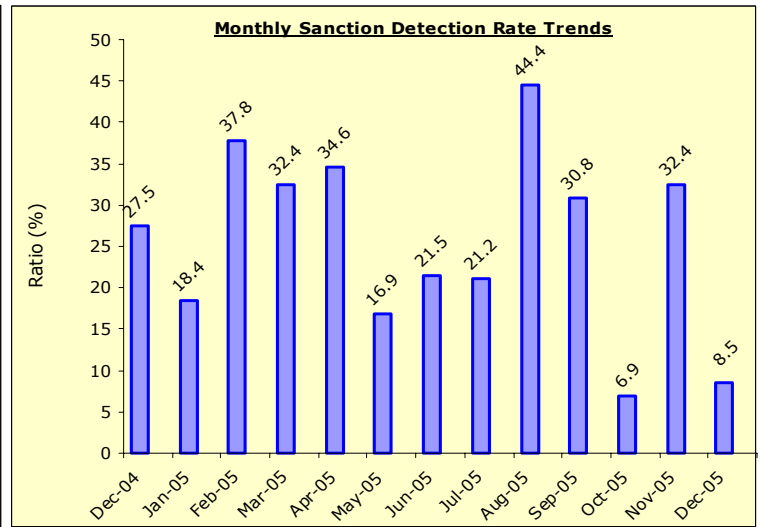
DYFED-POWYS POLICE

TARGET 2005/06 : 0% Increase in offences & 28% total detection rate

Recorded Crime Levels – December 2005

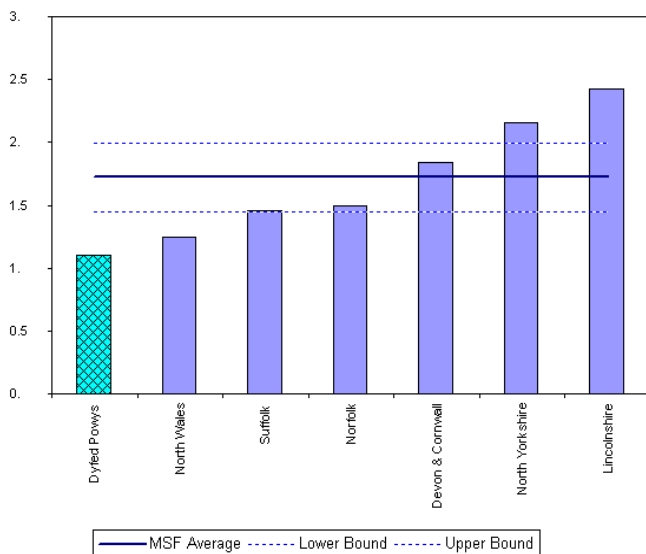


Monthly Sanction Detection Rates – December 2005



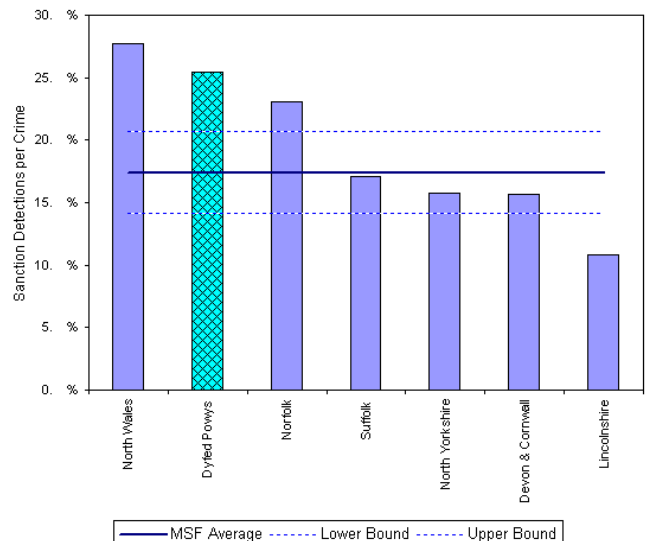
Total Domestic Burglary: December 2005 YTD	December 2005 YTD			Detection Rates YTD		Annual Trends - SPLY		
	Crimes	Sanction Dets	Total Dets	Sanction %	Total %	Crimes SPLY	Change	% Change
FORCE	620	144	151	23.2%	24.4%	839	- 219	- 26.1%
CARMS	268	66	66	24.6%	24.6%	360	- 92	- 25.6%
CERED	69	16	16	23.2%	23.2%	96	- 27	- 28.1%
PEMBS	137	32	38	23.4%	27.7%	203	- 66	- 32.5%
POWYS	146	30	31	20.5%	21.2%	180	- 34	- 18.9%

MSF – Crimes per 1000 Residents 01 September 2005 – 30 November 2005 (latest quarter)



Crimes per 1000 Households - Domestic Burglary - 01 Sep 2005 - 30 Nov 2005

MSF – Sanction detections (annual): 01 December 2004 – 30 November 2005



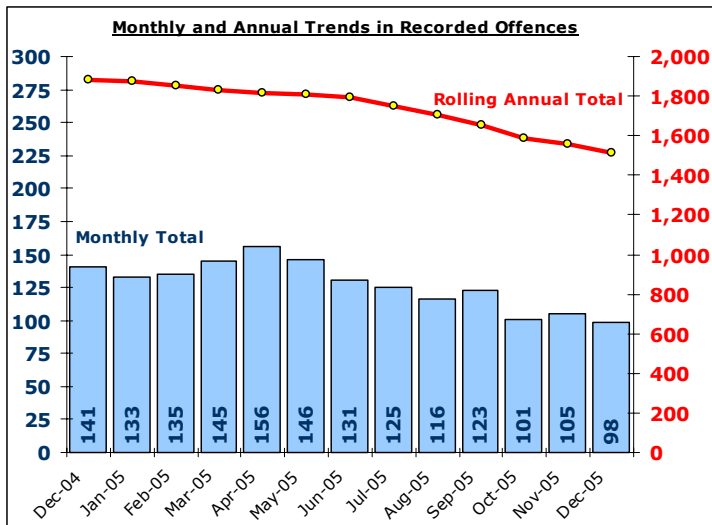
Bar chart MSF - Sanction Detections per Crime-Dyfed Powys-Domestic Burglary-01 Dec 2004 - 30 Nov 2005

Other Burglary

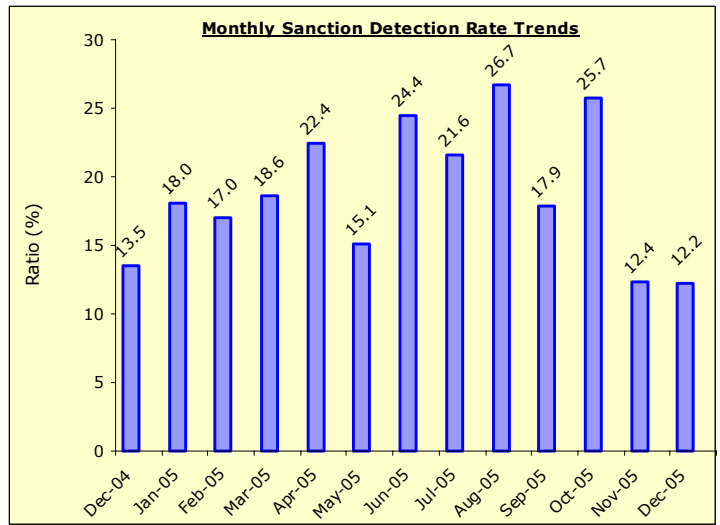
DYFED-POWYS POLICE

TARGET 2005/06 : No Target

Recorded Crime Levels – December 2005

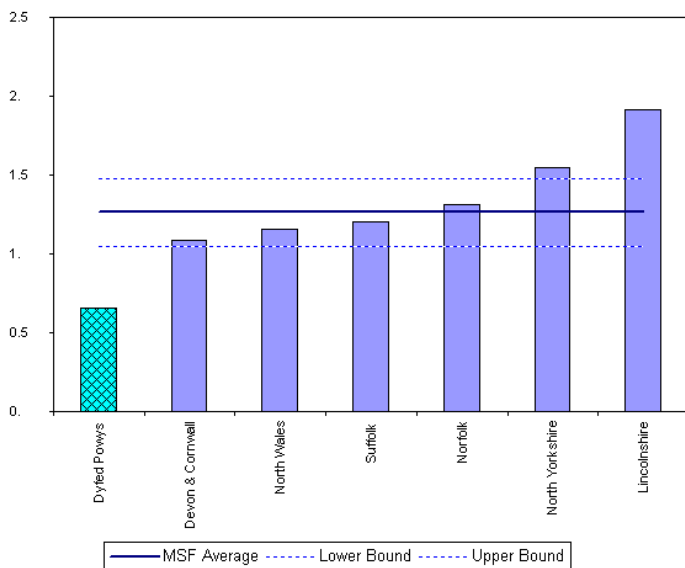


Monthly Sanction Detection Rates – December 2005



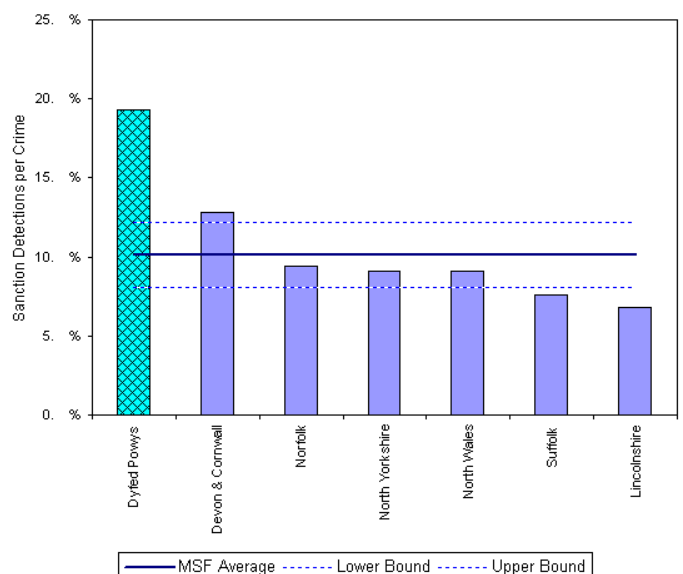
Total Other Burglary Crimes: December 2005 YTD	December 2005 YTD			Detection Rates YTD		Annual Trends - SPLY		
	Crimes	Sanction Dets	Total Dets	Sanction %	Total %	Crimes SPLY	Change	% Change
FORCE	1,101	220	231	20.0%	21.0%	1,420	- 319	- 22.5%
CARMS	492	99	101	20.1%	20.5%	678	- 186	- 27.4%
CERED	99	15	18	15.2%	18.2%	157	- 58	- 36.9%
PEMBS	224	43	46	19.2%	20.5%	264	- 40	- 15.2%
POWYS	286	63	66	22.0%	23.1%	321	- 35	- 10.9%

MSF – Crimes per 1000 Residents 01 September 2005 – 30 November 2005 (latest quarter)



Crimes per 1000 Residents - Non Domestic Burglary - 01 Sep 2005 - 30 Nov 2005

MSF – Sanction detections (annual): 01 December 2004 – 30 November 2005



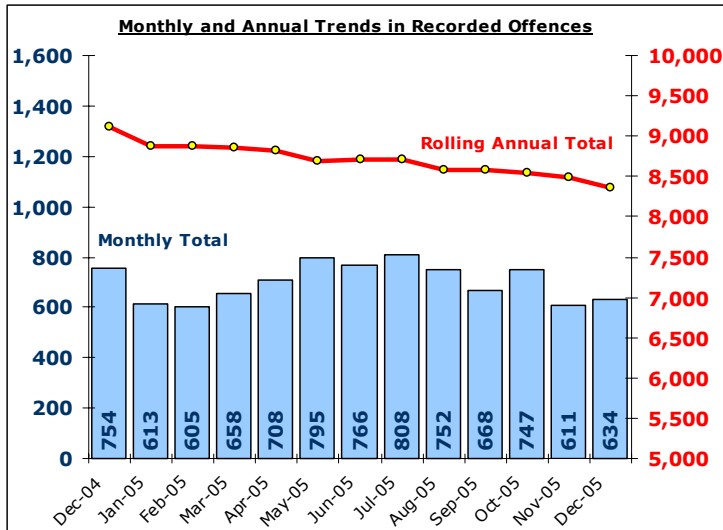
Bar chart MSF - Sanction Detections per Crime-Dyfed Powys-Non Domestic Burglary-01 Dec 2004 - 30 Nov 2005

Total Violent Crime

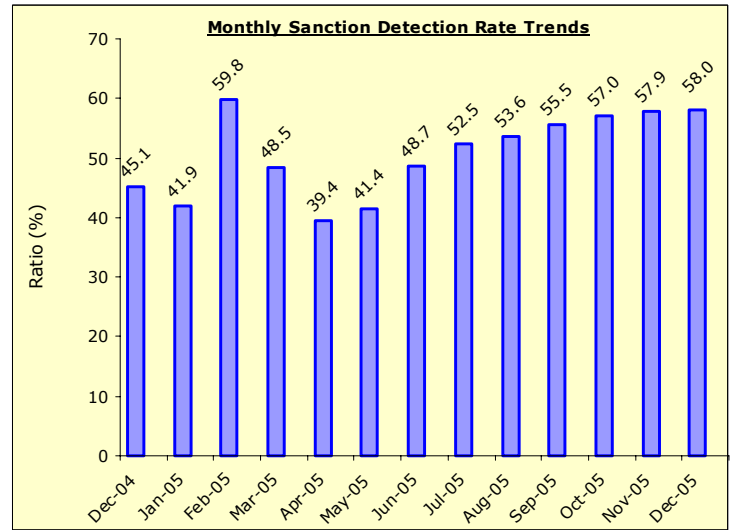
DYFED-POWYS POLICE

TARGET 2005/06 – 3% Reduction in offences & 60% total detection rate

Recorded Crime Levels – December 2005

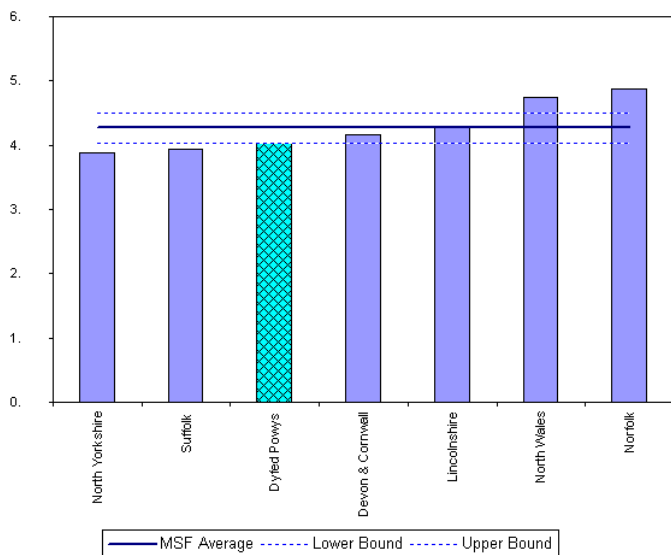


Monthly Sanction Detection Rates – December 2005

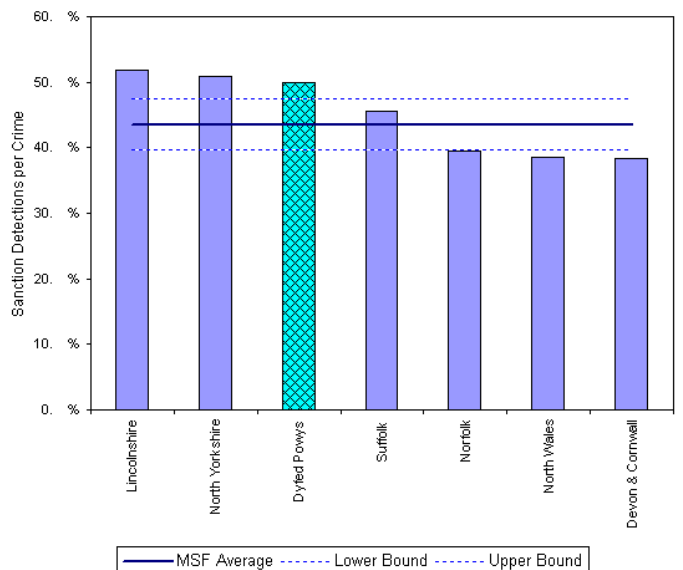


Total Violent Crimes: December 2005 YTD	December 2005 YTD			Detection Rates YTD		Annual Trends - SPLY		
	Crimes	Sanction Dets	Total Dets	Sanction %	Total %	Crimes SPLY	Change	% Change
FORCE	6,489	3,327	4,197	51.3%	64.7%	6,983	- 494	- 7.1%
CARMS	2,298	1,122	1,374	48.8%	59.8%	2,573	- 275	- 10.7%
CERED	831	438	583	52.7%	70.2%	1,071	- 240	- 22.4%
PEMBS	1,557	782	1,042	50.2%	66.9%	1,781	- 224	- 12.6%
POWYS	1,803	985	1,198	54.6%	66.4%	1,558	+ 245	+ 15.7%

MSF – Crimes per 1000 Residents 01 September 2005 – 30 November 2005 (latest quarter)



MSF – Sanction detections (annual): 01 December 2004 – 30 November 2005

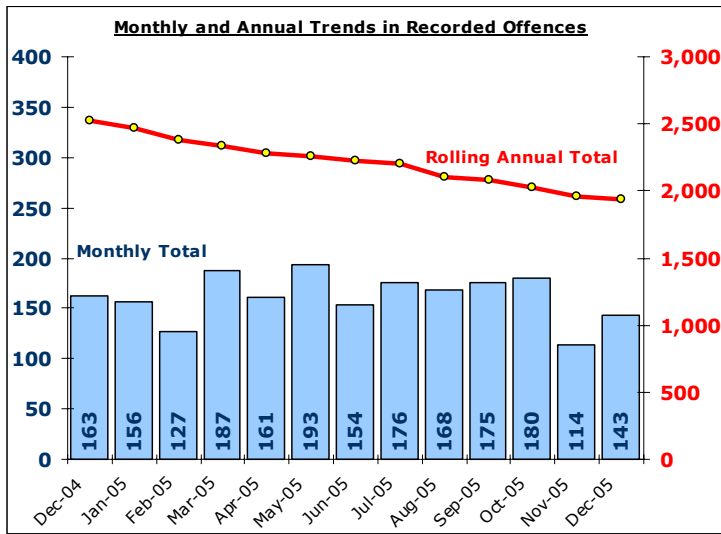


Total Vehicle Crime

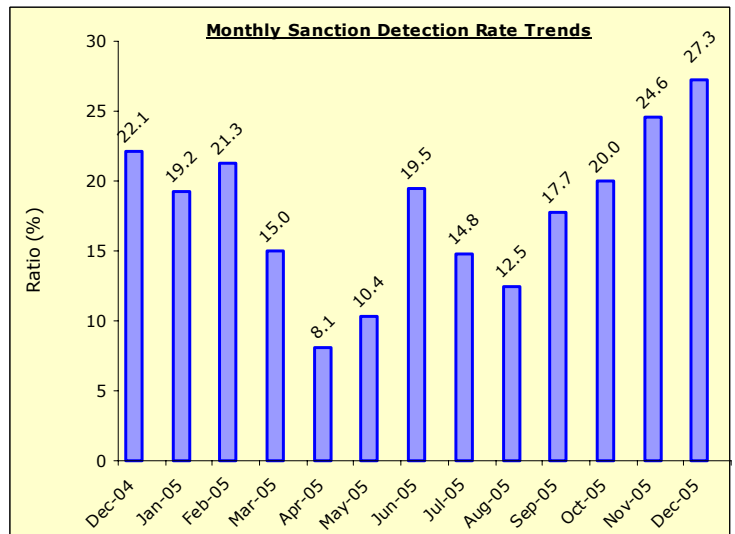
DYFED-POWYS POLICE

TARGET 2005/06 : 0% Increase in offences & 20% total detection rate

Recorded Crime Levels – December 2005

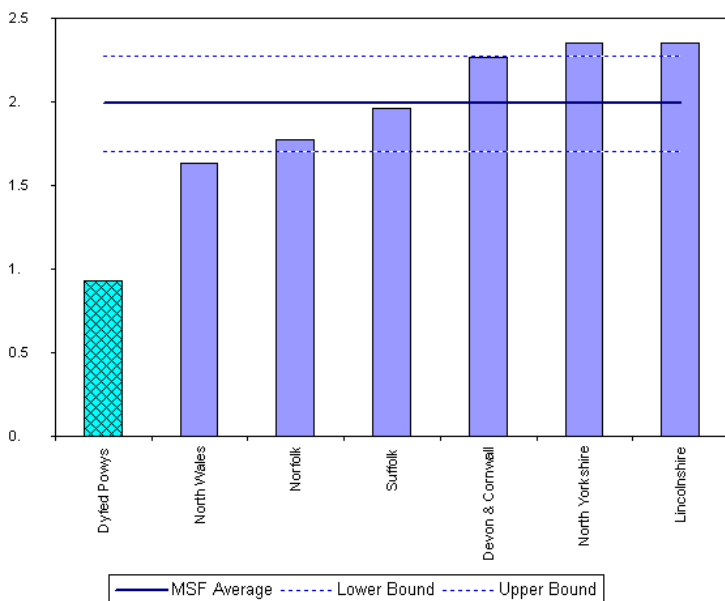


Monthly Sanction Detection Rates – December 2005

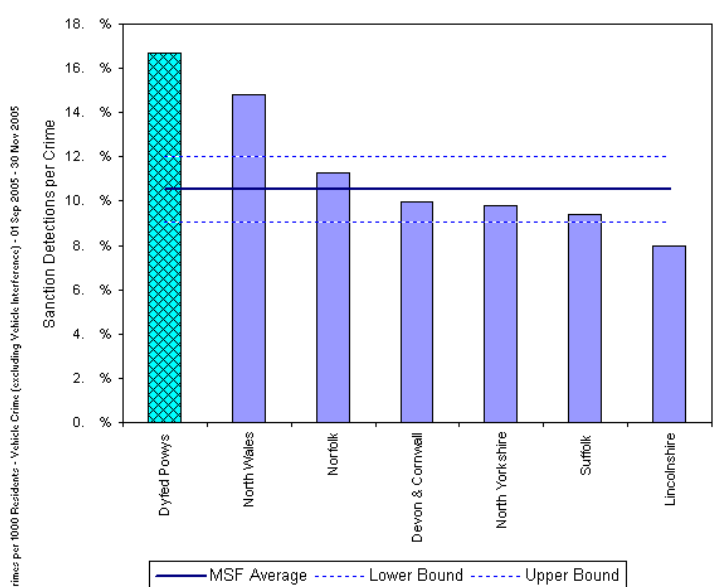


Total Vehicle Crimes: December 2005 YTD	December 2005 YTD			Detection Rates YTD		Annual Trends - SPLY		
	Crimes	Sanction Dets	Total Dets	Sanction %	Total %	Crimes SPLY	Change	% Change
FORCE	1,464	244	263	16.7%	18.0%	1,861	- 397	- 21.3%
CARMS	618	94	99	15.2%	16.0%	782	- 164	- 21.0%
CERED	160	28	32	17.5%	20.0%	172	- 12	- 7.0%
PEMBS	370	69	75	18.6%	20.3%	519	- 149	- 28.7%
POWYS	316	53	57	16.8%	18.0%	388	- 72	- 18.6%

MSF – Crimes per 1000 Residents 01 September 2005 – 30 November 2005 (latest quarter)



MSF – Sanction detections (annual): 01 December 2004 – 30 November 2005

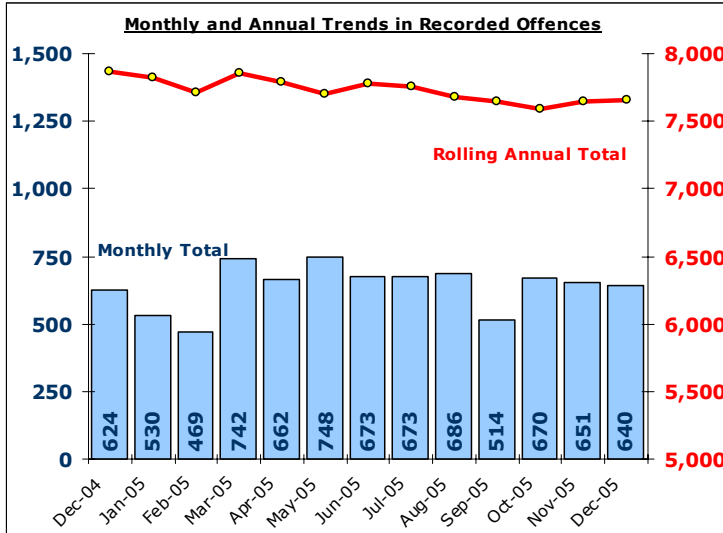


Total Criminal Damage

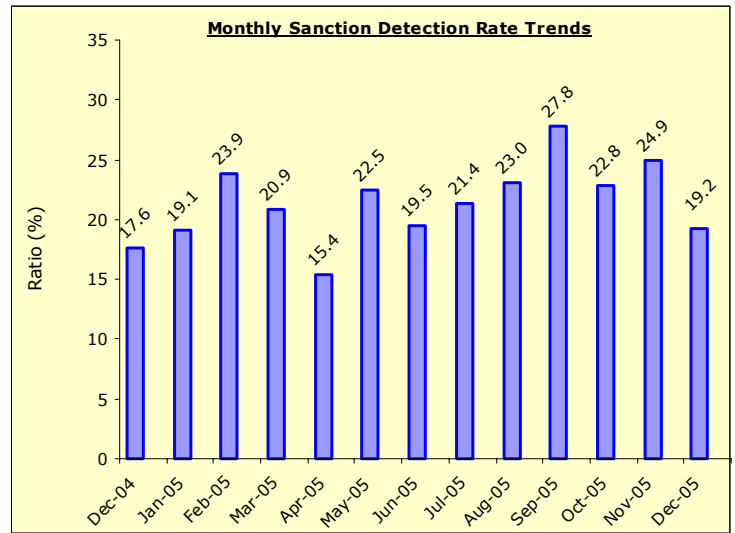
EXCLUDES ARSON % THREAT TO COMMIT CRIMINAL DAMAGE (HOC 56 & 59)

TARGET 2005/06 : NO TARGET

Recorded Crime Levels – December 2005

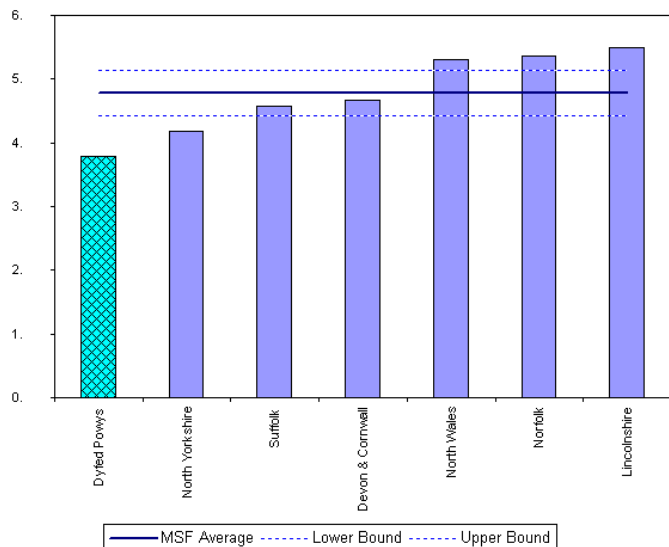


Monthly Sanction Detection Rates – December 2005



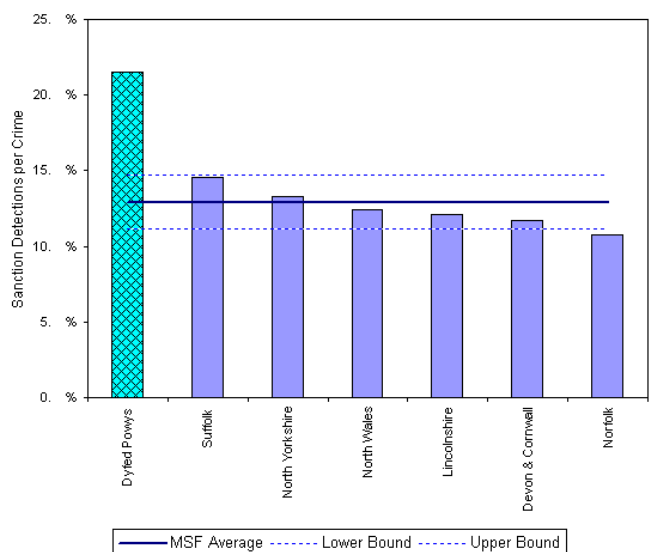
Total Criminal Damage: December 2005 YTD	December 2005 YTD			Detection Rates YTD		Annual Trends - SPLY		
	Crimes	Sanction Dets	Total Dets	Sanction %	Total %	Crimes SPLY	Change	% Change
FORCE	5,917	1,284	1,567	21.7%	26.5%	6,110	- 193	- 3.2%
CARMS	2,077	413	490	19.9%	23.6%	2,304	- 227	- 9.9%
CERED	828	177	208	21.4%	25.1%	737	+ 91	+ 12.3%
PEMBS	1,723	380	483	22.1%	28.0%	1,759	- 36	- 2.0%
POWYS	1,289	314	386	24.4%	29.9%	1,310	- 21	- 1.6%

MSF – Crimes per 1000 Residents 01 September 2005 – 30 November 2005 (latest quarter)



Crimes per 1000 Residents - Criminal Damage (exc 53) - 01 Sep 2005 - 30 Nov 2005

MSF – Sanction detections (annual): 01 December 2004 – 30 November 2005



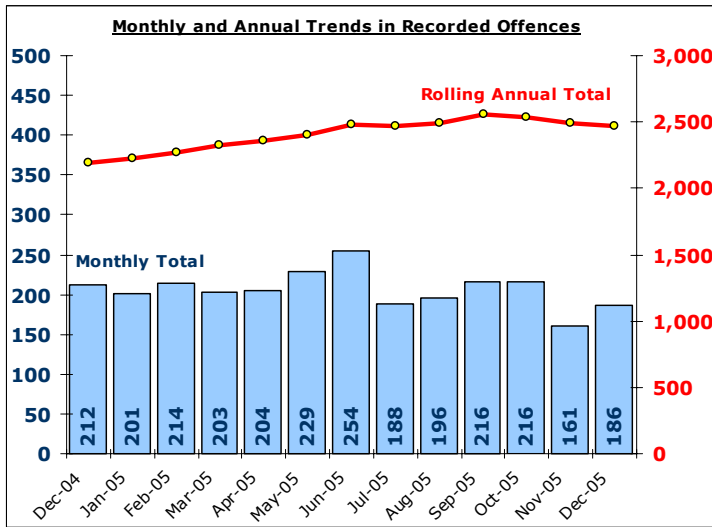
Sanction Detections per Crime - Dyfed Powys - Criminal Damage (exc 53) - 01 Dec 2004 - 30 Nov 2005

Total Drug Offences

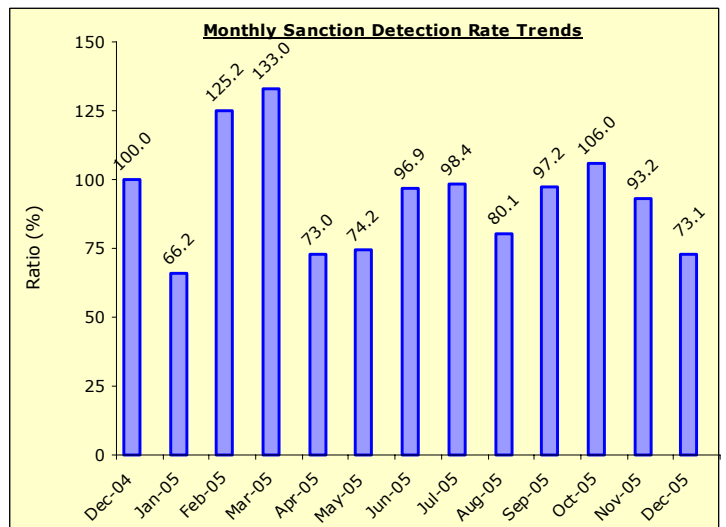
DYFED-POWYS POLICE

TARGET 2005/06 : NO TARGET

Recorded Crime Levels – December 2005

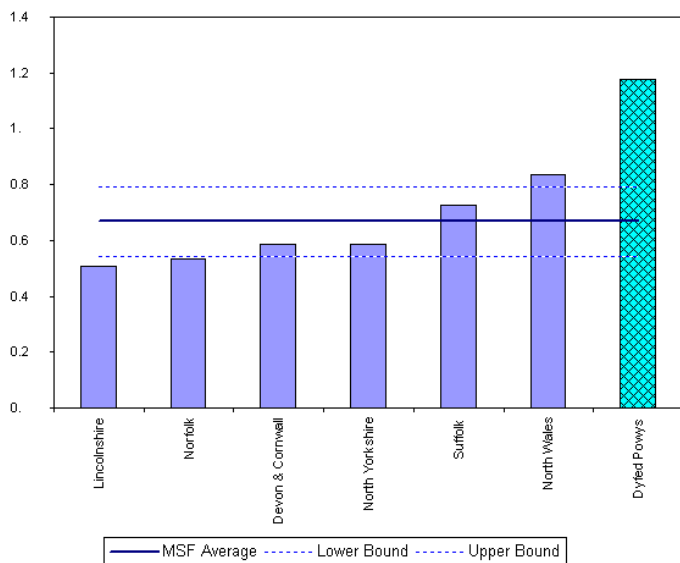


Monthly Sanction Detection Rates – December

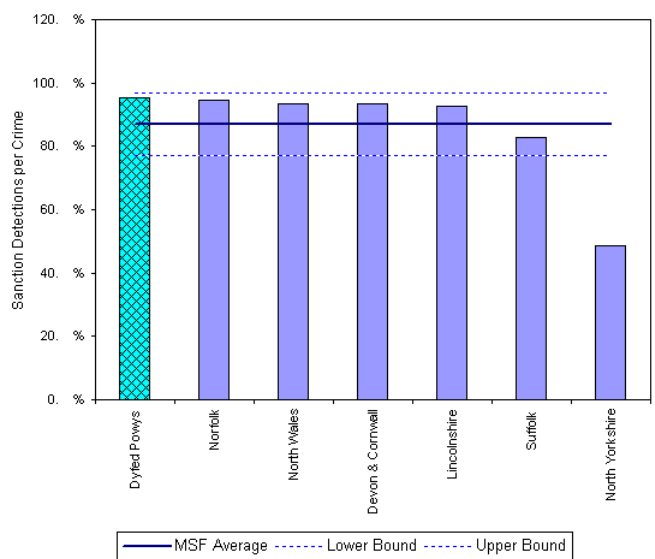


Total Drug Offences: December 2005 YTD	December 2005 YTD			Detection Rates YTD		Annual Trends - SPLY		
	Crimes	Sanction Dets	Total Dets	Sanction %	Total %	Crimes SPLY	Change	% Change
FORCE	1,850	1,632	1,748	88.2%	94.5%	1,709	+ 141	+ 8.3%
CARMS	736	625	688	84.9%	93.5%	671	+ 65	+ 9.7%
CERED	323	307	318	95.0%	98.5%	311	+ 12	+ 3.9%
PEMBS	474	418	439	88.2%	92.6%	456	+ 18	+ 3.9%
POWYS	317	282	303	89.0%	95.6%	271	+ 46	+ 17.0%

MSF – Crimes per 1000 Residents 01 September 2005 – 30 November 2005 (latest quarter)



MSF – Sanction detections (annual): 01 December 2004 – 30 November 2005



Section Level Sanction Detection Summary

DYFED-POWYS POLICE

TARGET 2005/06 : 31% SANCTION DETECTION RATE

Sanction Detections Performance December 2005 YTD: Total Recorded

Sanction Detection Rate	Recorded	Detected	Det Ratio	Recorded	Diff	% Change
THE FORCE	23,639	8,970	37.9%	25,306	- 1,667	- 6.6%
Carmarthenshire	8,660	3,170	36.6%	9,806	- 1,146	- 11.7%
Ammanford (AA)	1,105	462	41.8%	1,133	- 28	- 2.5%
Carmarthen (AC)	2,072	839	40.5%	2,346	- 274	- 11.7%
Llanelli (AL)	4,266	1,422	33.3%	5,045	- 779	- 15.4%
Towy Gwendraeth (AT)	1,217	447	36.7%	1,282	- 65	- 5.1%
Ceredigion	3,279	1,333	40.7%	3,512	- 233	- 6.6%
Aberystwyth (BA)	1,751	760	43.4%	1,821	- 70	- 3.8%
Aberaeron (BB)	326	114	35.0%	446	- 120	- 26.9%
Cardigan (BC)	791	293	37.0%	827	- 36	- 4.4%
Lampeter (BL)	411	166	40.4%	418	- 7	- 1.7%
Pembrokeshire	6,032	2,239	37.1%	6,480	- 448	- 6.9%
Fishguard (CF)	703	250	35.6%	738	- 35	- 4.7%
Haverfordwest (CH)	1,549	613	39.6%	1,723	- 174	- 10.1%
Milford Haven (CM)	1,147	446	38.9%	1,350	- 203	- 15.0%
Pembroke Dock (CP)	1,519	543	35.7%	1,420	+ 99	+ 7.0%
Tenby (CT)	1,114	387	34.7%	1,249	- 135	- 10.8%
Powys	5,668	2,228	39.3%	5,508	+ 160	+ 2.9%
Brecon (DB)	1,451	563	38.8%	1,284	+ 167	+ 13.0%
Llandrindod Wells (DL)	1,046	411	39.3%	1,109	- 63	- 5.7%
Newtown (DN)	1,779	679	38.2%	1,551	+ 228	+ 14.7%
Welshpool (DW)	955	400	41.9%	1,035	- 80	- 7.7%
Ystradgynlais (DY)	437	175	40.0%	529	- 92	- 17.4%

Sanction Detection Performance December 2005 YTD: Domestic Burglary, Violent Crime & Vehicle Crime

Sanction Detections	Total Domestic Burglary			Total Violent Crime			Total Vehicle Crime		
	Recorded	Detected	Det Ratio	Recorded	Detected	Det Ratio	Recorded	Detected	Det Ratio
THE FORCE	620	144	23.2%	6,489	3,327	51.3%	1,464	244	16.7%
Carmarthenshire	268	66	24.6%	2,298	1,122	48.8%	618	94	15.2%
Ammanford (AA)	22	9	40.9%	228	109	47.8%	83	13	15.7%
Carmarthen (AC)	39	8	20.5%	596	330	55.4%	118	19	16.1%
Llanelli (AL)	162	34	21.0%	1,165	521	44.7%	336	45	13.4%
Towy Gwendraeth (AT)	45	15	33.3%	309	162	52.4%	81	17	21.0%
Ceredigion	69	16	23.2%	831	438	52.7%	160	28	17.5%
Aberystwyth (BA)	41	10	24.4%	437	253	57.9%	72	12	16.7%
Aberaeron (BB)	3	2	66.7%	81	44	54.3%	22	1	4.5%
Cardigan (BC)	19	3	15.8%	212	94	44.3%	36	6	16.7%
Lampeter (BL)	6	1	16.7%	101	47	46.5%	30	9	30.0%
Pembrokeshire	137	32	23.4%	1,557	782	50.2%	370	69	18.6%
Fishguard (CF)	11	3	27.3%	181	83	45.9%	42	6	14.3%
Haverfordwest (CH)	42	9	21.4%	472	223	47.2%	53	9	17.0%
Milford Haven (CM)	25	8	32.0%	325	166	51.1%	58	14	24.1%
Pembroke Dock (CP)	36	5	13.9%	335	161	48.1%	100	10	10.0%
Tenby (CT)	23	7	30.4%	244	149	61.1%	117	30	25.6%
Powys	146	30	20.5%	1,803	985	54.6%	316	53	16.8%
Brecon (DB)	21	2	9.5%	451	274	60.8%	90	10	11.1%
Llandrindod Wells (DL)	34	9	26.5%	346	208	60.1%	51	10	19.6%
Newtown (DN)	60	14	23.3%	594	270	45.5%	80	13	16.3%
Welshpool (DW)	25	5	20.0%	265	155	58.5%	57	15	26.3%
Ystradgynlais (DY)	6	0	0.0%	147	78	53.1%	38	5	13.2%

Target Contribution Summary - Carmarthenshire

DYFED-POWYS POLICE

GREEN/RED indicates current performance **consistent** or **not consistent** with force target reduction & detection rate

CARMARTHENSHIRE		April-December YTD		Last Year		Indicator
CRIME	Performance	Indicator	Performance	Indicator	Change & Detection	
Total Crime Recorded (per 1,000 population)	8662	50.1	9809	56.8	-11.7%	
Total Detections (% rate)	3606	41.6%	3849	39.2%	41.6%	
Burglary Dwelling (per 1,000 households)	269	3.7	360	4.9	-25.3%	
Total Detections (% rate)	66	24.5%	89	24.7%	24.5%	
Total Violent Crime (per 1,000 population)	2299	13.3	2574	14.9	-10.7%	
Total Detections (% rate)	1374	59.8%	1524	59.2%	59.8%	
Autocrime per (1,000 population)	618	3.6	782	4.5	-21.0%	
Total Detections (% rate)	99	16.0%	156	19.9%	16.0%	
Ammanford		April-December YTD		Last Year		Indicator
CRIME	Performance	Indicator	Performance	Indicator	Change & Detection	
Total Crime Recorded (per 1,000 population)	1105	33.8	1133	34.7	-2.5%	
Total Detections (% rate)	514	46.5%	530	46.8%	46.5%	
Burglary Dwelling (per 1,000 households)	22	1.6	29	2.1	-24.1%	
Total Detections (% rate)	9	40.9%	10	34.5%	40.9%	
Total Violent Crime (per 1,000 population)	228	7.0	321	9.8	-29.0%	
Total Detections (% rate)	132	57.9%	207	64.5%	57.9%	
Autocrime per (1,000 population)	83	2.5	76	2.3	9.2%	
Total Detections (% rate)	14	16.9%	12	15.8%	16.9%	
Carmarthen		April-December YTD		Last Year		Indicator
CRIME	Performance	Indicator	Performance	Indicator	Change & Detection	
Total Crime Recorded (per 1,000 population)	2072	41.9	2342	47.4	-11.5%	
Total Detections (% rate)	934	45.1%	1053	45.0%	45.1%	
Burglary Dwelling (per 1,000 households)	39	1.9	50	2.4	-22.0%	
Total Detections (% rate)	8	20.5%	6	12.0%	20.5%	
Total Violent Crime (per 1,000 population)	596	12.1	661	13.4	-9.8%	
Total Detections (% rate)	388	65.1%	411	62.2%	65.1%	
Autocrime per (1,000 population)	118	2.4	110	2.2	7.3%	
Total Detections (% rate)	19	16.1%	13	11.8%	16.1%	
Llanelli		April-December YTD		Last Year		Indicator
CRIME	Performance	Indicator	Performance	Indicator	Change & Detection	
Total Crime Recorded (per 1,000 population)	4266	70.5	5047	83.5	-15.5%	
Total Detections (% rate)	1663	39.0%	1765	35.0%	39.0%	
Burglary Dwelling (per 1,000 households)	162	6.2	225	8.6	-28.0%	
Total Detections (% rate)	34	21.0%	58	25.8%	21.0%	
Total Violent Crime (per 1,000 population)	1165	19.3	1287	21.3	-9.5%	
Total Detections (% rate)	670	57.5%	716	55.6%	57.5%	
Autocrime per (1,000 population)	336	5.6	482	8.0	-30.3%	
Total Detections (% rate)	48	14.3%	114	23.7%	14.3%	
Towf/Gwendraeth		April-December YTD		Last Year		Indicator
CRIME	Performance	Indicator	Performance	Indicator	Change & Detection	
Total Crime Recorded (per 1,000 population)	1217	40.2	1283	42.4	-5.1%	
Total Detections (% rate)	495	40.7%	499	38.9%	40.7%	
Burglary Dwelling (per 1,000 households)	45	3.6	56	4.5	-19.6%	
Total Detections (% rate)	15	33.3%	15	26.8%	33.3%	
Total Violent Crime (per 1,000 population)	309	10.2	304	10.1	1.6%	
Total Detections (% rate)	184	59.5%	189	62.2%	59.5%	
Autocrime per (1,000 population)	81	2.7	114	3.8	-28.9%	
Total Detections (% rate)	18	22.2%	17	14.9%	22.2%	

Target Contribution Summary - Ceredigion

DYFED-POWYS POLICE

GREEN/RED indicates current performance **consistent** or **not consistent** with force target reduction & detection rate

CEREDIGION		April-December YTD		Last Year		Indicator
CRIME	Performance	Indicator	Performance	Indicator	Change & Detection	
Total Crime Recorded (per 1,000 population)	3279	43.8	3512	46.9	-6.6%	
Total Detections (% rate)	1563	47.7%	1450	41.3%	47.7%	
Burglary Dwelling (per 1,000 households)	69	2.2	96	3.1	-28.1%	
Total Detections (% rate)	16	23.2%	21	21.9%	23.2%	
Total Violent Crime (per 1,000 population)	831	11.1	1071	14.3	-22.4%	
Total Detections (% rate)	583	70.2%	540	50.4%	70.2%	
Autocrime per (1,000 population)	160	2.1	172	2.3	-7.0%	
Total Detections (% rate)	32	20.0%	30	17.4%	20.0%	
Ceredigion North		April-December YTD		Last Year		Indicator
CRIME	Performance	Indicator	Performance	Indicator	Change & Detection	
Total Crime Recorded (per 1,000 population)	1751	55.1	1820	57.2	-3.8%	
Total Detections (% rate)	847	48.4%	814	44.7%	48.4%	
Burglary Dwelling (per 1,000 households)	41	3.3	30	2.4	36.7%	
Total Detections (% rate)	10	24.4%	9	30.0%	24.4%	
Total Violent Crime (per 1,000 population)	437	13.7	560	17.6	-22.0%	
Total Detections (% rate)	313	71.6%	290	51.8%	71.6%	
Autocrime per (1,000 population)	72	2.3	71	2.2	1.4%	
Total Detections (% rate)	13	18.1%	10	14.1%	18.1%	
Ceredigion South		April-December YTD		Last Year		Indicator
CRIME	Performance	Indicator	Performance	Indicator	Change & Detection	
Total Crime Recorded (per 1,000 population)	1528	35.6	1692	39.4	-9.7%	
Total Detections (% rate)	716	46.9%	636	37.6%	46.9%	
Burglary Dwelling (per 1,000 households)	28	1.5	66	3.6	-57.6%	
Total Detections (% rate)	6	21.4%	12	18.2%	21.4%	
Total Violent Crime (per 1,000 population)	394	9.2	511	11.9	-22.9%	
Total Detections (% rate)	270	68.5%	250	48.9%	68.5%	
Autocrime per (1,000 population)	88	2.0	101	2.4	-12.9%	
Total Detections (% rate)	19	21.6%	20	19.8%	21.6%	

Ceredigion South is an area used for comparison purposes only. It incorporates the three section areas of Lampeter/Aberaeron and Cardigan. Details on these three discrete areas are also included here for information.

Aberaeron		April-December YTD		Last Year		Indicator
CRIME	Performance	Indicator	Performance	Indicator	Change & Detection	
Total Crime Recorded (per 1,000 population)	326	25.7	446	35.2	-26.9%	
Total Detections (% rate)	132	40.5%	153	34.3%	40.5%	
Burglary Dwelling (per 1,000 households)	3	0.5	21	3.8	-85.7%	
Total Detections (% rate)	2	66.7%	3	14.3%	66.7%	
Total Violent Crime (per 1,000 population)	81	6.4	115	9.1	-29.6%	
Total Detections (% rate)	49	60.5%	57	49.6%	60.5%	
Autocrime per (1,000 population)	22	1.7	22	1.7	0.0%	
Total Detections (% rate)	2	9.1%	4	18.2%	9.1%	
Cardigan		April-December YTD		Last Year		Indicator
CRIME	Performance	Indicator	Performance	Indicator	Change & Detection	
Total Crime Recorded (per 1,000 population)	791	41.9	827	43.8	-4.4%	
Total Detections (% rate)	363	45.9%	324	39.2%	45.9%	
Burglary Dwelling (per 1,000 households)	19	2.3	27	3.3	-29.6%	
Total Detections (% rate)	3	15.8%	5	18.5%	15.8%	
Total Violent Crime (per 1,000 population)	212	11.2	259	13.7	-18.1%	
Total Detections (% rate)	145	68.4%	132	51.0%	68.4%	
Autocrime per (1,000 population)	36	1.9	49	2.6	-26.5%	
Total Detections (% rate)	6	16.7%	10	20.4%	16.7%	
Lampeter		April-December YTD		Last Year		Indicator
CRIME	Performance	Indicator	Performance	Indicator	Change & Detection	
Total Crime Recorded (per 1,000 population)	411	35.5	419	36.2	-1.9%	
Total Detections (% rate)	221	53.8%	159	37.9%	53.8%	
Burglary Dwelling (per 1,000 households)	6	1.3	18	3.8	-66.7%	
Total Detections (% rate)	1	16.7%	4	22.2%	16.7%	
Total Violent Crime (per 1,000 population)	101	8.7	137	11.8	-26.3%	
Total Detections (% rate)	76	75.2%	61	44.5%	75.2%	
Autocrime per (1,000 population)	30	2.6	30	2.6	0.0%	
Total Detections (% rate)	11	36.7%	6	20.0%	36.7%	

Target Contribution Summary - Pembrokeshire

DYFED-POWYS POLICE

GREEN/RED indicates current performance **consistent** or **not consistent** with force target reduction & total detection rate

PEMBROKESHIRE		April-December YTD		Last Year		Indicator
CRIME	Performance	Indicator	Performance	Indicator	Change & Detection	
Total Crime Recorded (per 1,000 population)	6032	52.9	6482	56.8	-6.9%	
Total Detections (% rate)	2681	44.4%	2654	40.9%	44.4%	
Burglary Dwelling (per 1,000 households)	137	2.8	203	4.2	-32.5%	
Total Detections (% rate)	37	27.0%	50	24.6%	27.0%	
Total Violent Crime (per 1,000 population)	1557	13.6	1782	15.6	-12.6%	
Total Detections (% rate)	1042	66.9%	1099	61.7%	66.9%	
Autocrime per (1,000 population)	370	3.2	519	4.5	-28.7%	
Total Detections (% rate)	75	20.3%	98	18.9%	20.3%	
Fishguard		April-December YTD		Last Year		Indicator
CRIME	Performance	Indicator	Performance	Indicator	Change & Detection	
Total Crime Recorded (per 1,000 population)	703	26.5	738	27.9	-4.7%	
Total Detections (% rate)	321	45.7%	324	43.9%	45.7%	
Burglary Dwelling (per 1,000 households)	11	1.0	26	2.3	-57.7%	
Total Detections (% rate)	4	36.4%	11	42.3%	36.4%	
Total Violent Crime (per 1,000 population)	181	6.8	170	6.4	6.5%	
Total Detections (% rate)	126	69.6%	113	66.5%	69.6%	
Autocrime per (1,000 population)	42	1.6	71	2.7	-40.8%	
Total Detections (% rate)	8	19.0%	20	28.2%	19.0%	
Haverfordwest		April-December YTD		Last Year		Indicator
CRIME	Performance	Indicator	Performance	Indicator	Change & Detection	
Total Crime Recorded (per 1,000 population)	1549	77.5	1723	86.2	-10.1%	
Total Detections (% rate)	718	46.4%	749	43.5%	46.4%	
Burglary Dwelling (per 1,000 households)	42	5.0	64	7.6	-34.4%	
Total Detections (% rate)	11	26.2%	12	18.8%	26.2%	
Total Violent Crime (per 1,000 population)	472	23.6	528	26.4	-10.6%	
Total Detections (% rate)	293	62.1%	319	60.4%	62.1%	
Autocrime per (1,000 population)	53	2.7	113	5.7	-53.1%	
Total Detections (% rate)	9	17.0%	19	16.8%	17.0%	
Milford Haven		April-December YTD		Last Year		Indicator
CRIME	Performance	Indicator	Performance	Indicator	Change & Detection	
Total Crime Recorded (per 1,000 population)	1147	47.0	1351	55.4	-15.1%	
Total Detections (% rate)	524	45.7%	592	43.8%	45.7%	
Burglary Dwelling (per 1,000 households)	25	2.5	29	2.8	-13.8%	
Total Detections (% rate)	11	44.0%	12	41.4%	44.0%	
Total Violent Crime (per 1,000 population)	325	13.3	368	15.1	-11.7%	
Total Detections (% rate)	218	67.1%	237	64.4%	67.1%	
Autocrime per (1,000 population)	58	2.4	87	3.6	-33.3%	
Total Detections (% rate)	18	31.0%	32	36.8%	31.0%	
Pembroke Dock		April-December YTD		Last Year		Indicator
CRIME	Performance	Indicator	Performance	Indicator	Change & Detection	
Total Crime Recorded (per 1,000 population)	1519	79.5	1420	74.3	7.0%	
Total Detections (% rate)	671	44.2%	513	36.1%	44.2%	
Burglary Dwelling (per 1,000 households)	36	4.5	37	4.6	-2.7%	
Total Detections (% rate)	5	13.9%	6	16.2%	13.9%	
Total Violent Crime (per 1,000 population)	335	17.5	386	20.2	-13.2%	
Total Detections (% rate)	223	66.6%	227	58.8%	66.6%	
Autocrime per (1,000 population)	100	5.2	155	8.1	-35.5%	
Total Detections (% rate)	10	10.0%	12	7.7%	10.0%	
Tenby		April-December YTD		Last Year		Indicator
CRIME	Performance	Indicator	Performance	Indicator	Change & Detection	
Total Crime Recorded (per 1,000 population)	1114	46.1	1250	51.8	-10.9%	
Total Detections (% rate)	447	40.1%	476	38.1%	40.1%	
Burglary Dwelling (per 1,000 households)	23	2.2	46	4.5	-50.0%	
Total Detections (% rate)	7	30.4%	9	19.6%	30.4%	
Total Violent Crime (per 1,000 population)	244	10.1	330	13.7	-26.1%	
Total Detections (% rate)	182	74.6%	203	61.5%	74.6%	
Autocrime per (1,000 population)	117	4.8	93	3.9	25.8%	
Total Detections (% rate)	30	25.6%	15	16.1%	25.6%	

Target Contribution Summary - Powys

DYFED-POWYS POLICE

GREEN/RED indicates current performance **consistent** or **not consistent** with force target reduction & detection rate

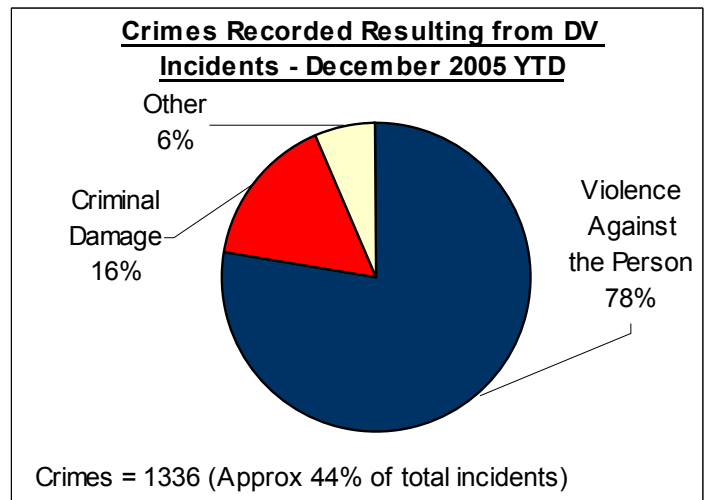
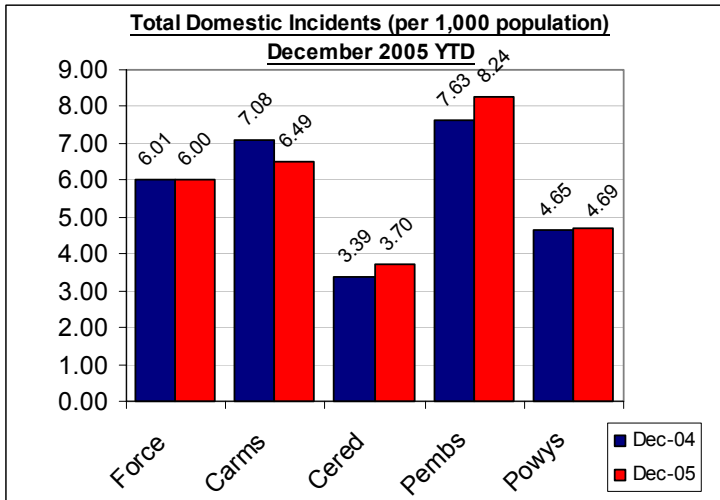
POWYS	April-December YTD		Last Year		Indicator
CRIME	Performance	Indicator	Performance	Indicator	Change & Detection
Total Crime Recorded (per 1,000 population)	5668	44.9	5509	43.6	2.9%
Total Detections (% rate)	2582	45.6%	2255	40.9%	45.6%
Burglary Dwelling (per 1,000 households)	146	2.7	180	3.3	-18.9%
Total Detections (% rate)	31	21.2%	29	16.1%	21.2%
Total Violent Crime (per 1,000 population)	1803	14.3	1558	12.3	15.7%
Total Detections (% rate)	1198	66.4%	941	60.4%	66.4%
Autocrime per (1,000 population)	316	2.5	389	3.1	-18.8%
Total Detections (% rate)	57	18.0%	91	23.4%	18.0%
Brecon	April-December YTD		Last Year		Indicator
CRIME	Performance	Indicator	Performance	Indicator	Change & Detection
Total Crime Recorded (per 1,000 population)	1451	56.7	1285	50.2	12.9%
Total Detections (% rate)	663	45.7%	502	39.1%	45.7%
Burglary Dwelling (per 1,000 households)	21	2.0	30	2.8	-30.0%
Total Detections (% rate)	2	9.5%	5	16.7%	9.5%
Total Violent Crime (per 1,000 population)	451	17.6	370	14.5	21.9%
Total Detections (% rate)	331	73.4%	218	58.9%	73.4%
Autocrime per (1,000 population)	90	3.5	99	3.9	-9.1%
Total Detections (% rate)	10	11.1%	20	20.2%	11.1%
Llandrindod Wells	April-December YTD		Last Year		Indicator
CRIME	Performance	Indicator	Performance	Indicator	Change & Detection
Total Crime Recorded (per 1,000 population)	1046	37.1	1109	39.3	-5.7%
Total Detections (% rate)	494	47.2%	488	44.0%	47.2%
Burglary Dwelling (per 1,000 households)	33	2.7	51	4.1	-35.3%
Total Detections (% rate)	9	27.3%	9	17.6%	27.3%
Total Violent Crime (per 1,000 population)	346	12.3	316	11.2	9.5%
Total Detections (% rate)	260	75.1%	202	63.9%	75.1%
Autocrime per (1,000 population)	51	1.8	70	2.5	-27.1%
Total Detections (% rate)	12	23.5%	11	15.7%	23.5%
Newtown	April-December YTD		Last Year		Indicator
CRIME	Performance	Indicator	Performance	Indicator	Change & Detection
Total Crime Recorded (per 1,000 population)	1779	50.6	1551	44.2	14.7%
Total Detections (% rate)	772	43.4%	572	36.9%	43.4%
Burglary Dwelling (per 1,000 households)	60	4.0	72	4.8	-16.7%
Total Detections (% rate)	15	25.0%	7	9.7%	25.0%
Total Violent Crime (per 1,000 population)	594	16.9	437	12.4	35.9%
Total Detections (% rate)	330	55.6%	249	57.0%	55.6%
Autocrime per (1,000 population)	80	2.3	80	2.3	0.0%
Total Detections (% rate)	13	16.3%	19	23.8%	16.3%
Welshpool	April-December YTD		Last Year		Indicator
CRIME	Performance	Indicator	Performance	Indicator	Change & Detection
Total Crime Recorded (per 1,000 population)	955	37.4	1035	40.5	-7.7%
Total Detections (% rate)	449	47.0%	448	43.3%	47.0%
Burglary Dwelling (per 1,000 households)	25	2.3	17	1.6	47.1%
Total Detections (% rate)	5	20.0%	3	17.6%	20.0%
Total Violent Crime (per 1,000 population)	265	10.4	271	10.6	-2.2%
Total Detections (% rate)	182	68.7%	171	63.1%	68.7%
Autocrime per (1,000 population)	57	2.2	83	3.2	-31.3%
Total Detections (% rate)	17	29.8%	29	34.9%	29.8%
Ystradavnlais	April-December YTD		Last Year		Indicator
CRIME	Performance	Indicator	Performance	Indicator	Change & Detection
Total Crime Recorded (per 1,000 population)	437	36.8	529	44.6	-17.4%
Total Detections (% rate)	204	46.7%	245	46.3%	46.7%
Burglary Dwelling (per 1,000 households)	5	1.0	9	1.8	-44.4%
Total Detections (% rate)	0	0.0%	4	44.4%	0.0%
Total Violent Crime (per 1,000 population)	147	12.4	164	13.8	-10.4%
Total Detections (% rate)	95	64.6%	101	61.6%	64.6%
Autocrime per (1,000 population)	38	3.2	57	4.8	-33.3%
Total Detections (% rate)	5	13.2%	12	21.1%	13.2%

Domestic Incidents

DYFED POWYS POLICE

SPI 8A TARGET - 80% OF INCIDENTS (WITH A POWER OF ARREST) LEADING TO ARREST
LOCAL TARGET - 30% OF TOTAL INCIDENTS INVOLVING REPEAT VICTIMS

Please note figures provided here are provisional only. For the latest detailed information please contact your local Public Protection Unit (PPU) for further details.



Section & Divisional Summary – December 2005 YTD

Section	Incidents		Arrests		Sanction Detections			Repeat Victims	Apr-Dec 2004 (SPLY)	
	Total Incidents	Power Of Arrest	Arrests where POA	% POA	Crimes	Sanction Detections	% Sanction Detection	% Repeats (12mths data)	Total Incidents	Annual % Change
Ammanford (AA)	128	52	41	78.8%	53	26	49.1%	13.9%	206	-37.9%
Carmarthen (AC)	232	104	91	87.5%	101	44	43.6%	18.6%	250	-7.2%
Llanelli (AL)	614	267	208	77.9%	292	126	43.2%	24.7%	608	1.0%
Towy Gwendraeth (AT)	179	74	62	83.8%	62	36	58.1%	22.4%	193	-7.3%
Carmarthenshire	1153	497	402	80.9%	508	232	45.7%	21.9%	1257	-8.3%
Aberystwyth (BA)	158	79	76	96.2%	70	37	52.9%	17.5%	133	18.8%
Aberaeron (BB)	24	15	12	80.0%	13	6	46.2%	24.2%	35	-31.4%
Cardigan (BC)	73	36	28	77.8%	41	16	39.0%	17.0%	74	-1.4%
Lampeter (BL)	34	16	15	93.8%	17	8	47.1%	13.2%	23	47.8%
Ceredigion	289	146	131	89.7%	141	67	47.5%	17.5%	265	9.1%
Fishguard (CF)	135	55	48	87.3%	59	28	47.5%	28.3%	103	31.1%
Haverfordwest (CH)	226	95	72	75.8%	93	28	30.1%	34.2%	230	-1.7%
Milford Haven (CM)	228	87	65	74.7%	81	41	50.6%	34.3%	193	18.1%
Pembroke Dock (CP)	253	118	94	79.7%	90	38	42.2%	26.9%	253	0.0%
Tenby (CT)	125	59	50	84.7%	53	29	54.7%	25.9%	116	7.8%
Pembrokeshire	967	414	329	79.5%	376	164	43.6%	30.2%	895	8.0%
Brecon (DB)	127	57	59	103.5%	58	26	44.8%	20.5%	146	-13.0%
Llandrindod Wells (DL)	109	49	46	93.9%	54	28	51.9%	26.0%	104	4.8%
Newtown (DN)	200	89	84	94.4%	105	40	38.1%	21.1%	172	16.3%
Welshpool (DW)	97	36	34	94.4%	54	24	44.4%	22.3%	108	-10.2%
Ystradgynlais (DY)	80	36	34	94.4%	40	20	50.0%	22.6%	78	2.6%
Powys	613	267	257	96.3%	311	138	44.4%	22.3%	608	0.8%
Force	3022	1324	1119	84.5%	1336	601	45.0%	24.2%	3025	-0.1%

Source: LCS Recorded Domestic Incident Details (extracted 09/01/05)
 NB – Repeat Victims performance based on 12-months incident data and not fiscal year-to-date

User Satisfaction

CITIZEN FOCUS PERFORMANCE ASSESSMENT DOMAIN

TARGET 2005/06

These measures constitute the citizen focus domain in the police performance assessment framework. All victims of crimes (domestic burglary, violent crime and vehicle crime only) or those involved in road traffic collisions are surveyed within a short period of coming into contact with the force to gain their views on the service they received.

For performance assessment purposes, these measurements of user satisfaction are grouped into five main themes, which are:

- SPI 1a – Satisfaction with making contact with the police: 'Ease of Contact'
- SPI 1b – Satisfaction with the action taken by the police: 'Actions'
- SPI 1c – Satisfaction with being kept informed of progress: 'Follow-Up'
- SPI 1d – Satisfaction with their treatment by staff: 'Treatment'
- SPI 1e – Satisfaction with the overall service provided: 'Whole Experience'

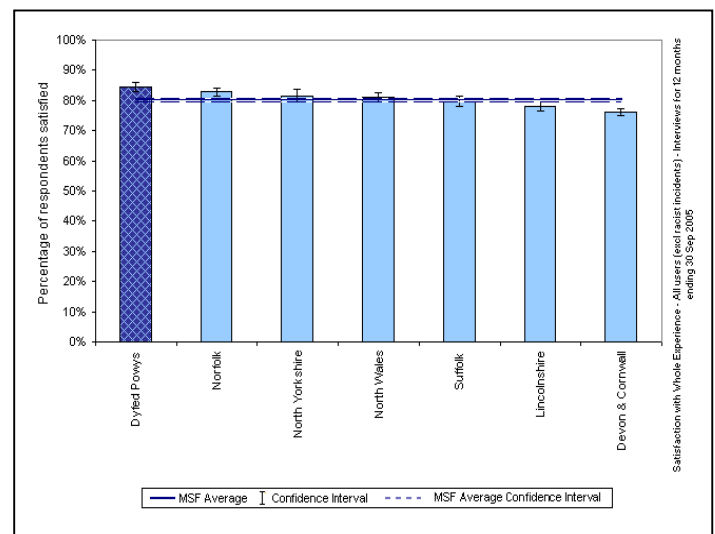
Force User Satisfaction – Year Ending September 2005

Comparative User Satisfaction

Satisfaction with...	DPP Force	MSF Average	Difference
Ease of Contact	92.3%	89.2%	3.1%
Actions	83.9%	78.3%	5.6%
Follow-up	70.4%	63.6%	6.8%
Treatment	91.2%	89.5%	1.7%
Whole experience	84.4%	80.3%	4.1%

Source: Home Office / Iquanta, January 2006

MSF – Comparative Force Performance - Whole Experience



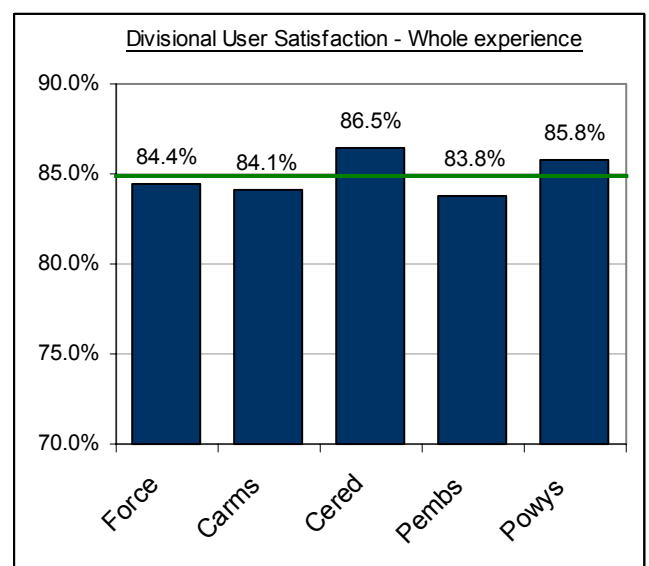
Source: Home Office / Iquanta, January 2006

Divisional User Satisfaction – Year Ending September 2005 (Oct 04 – Sept 05)

BCU user Satisfaction Summary

Year Ending Sept 2005	% Satisfied (Very, Completely and Fairly Satisfied)					Target
	Force	Carms	Cered	Pembs	Powys	
Ease of Contact	92.3%	94.0%	91.8%	88.0%	93.1%	92%
Actions	83.9%	84.7%	82.0%	82.5%	85.8%	84%
Follow-up	70.4%	72.3%	74.6%	67.0%	70.6%	70%
Treatment	91.2%	90.8%	92.0%	91.1%	92.3%	92%
Whole experience	84.4%	84.1%	86.5%	83.8%	85.8%	85%

Source: Home Office / Iquanta, January 2006

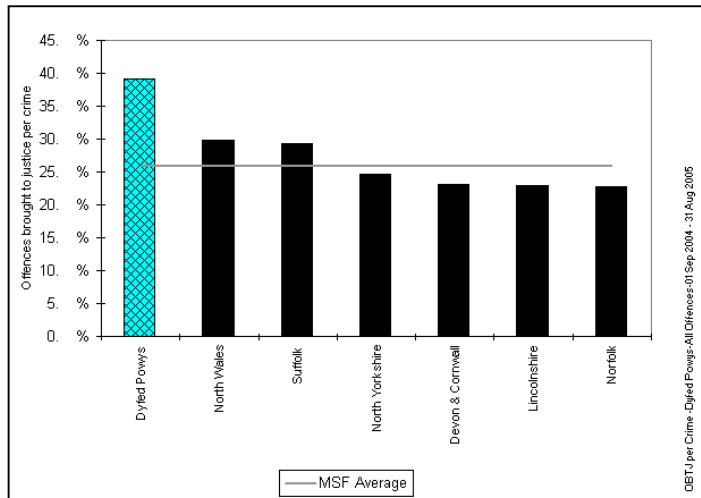
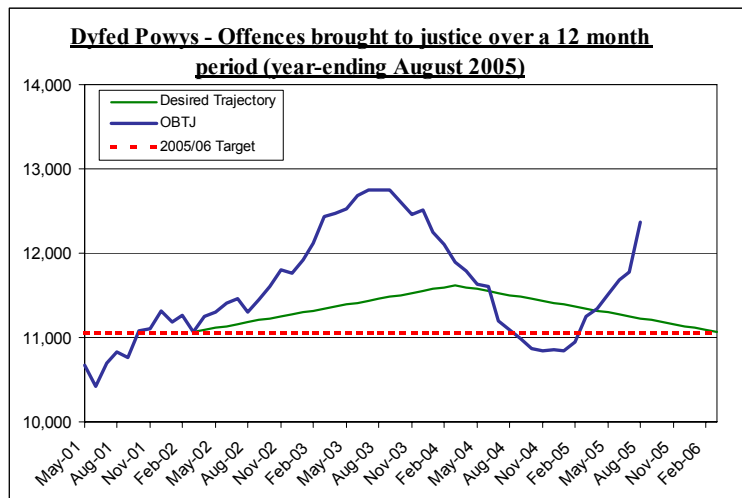


Additional comparative data is available on a quarterly basis. For further information on this or Iquanta contact Corporate Services (ext 6654).

Narrowing the Justice Gap - OFFENCES BROUGHT TO JUSTICE & SANCTION DETECTIONS

TARGET 2005/06 : 11,068 total OBTJ (Offences Brought to Justice)

Total Offences Brought to Justice (OBTJ) – Force & MSF Comparisons



Offences brought to justice – 12 monthly data	TIC	PND	Formal Warnings	Cautions	Convictions	OBTJ
Baseline: Apr 01 – Mar 02	420	-	-	3,698	6,900	11,068
Latest: August 04 – August 05	526	625	1,184	3,899	6,129	12,363
Change	+25%	-	-	+5%	-11%	+12%
2005/06 Force Target (0%- 11,068 OBTJ)	YES	n/a	YES	YES	NO	YES

Divisional Contribution Toward OBTJ Volumes – Approximate Latest

Please note this data is provided as a **guide only** - it is provided here for information.

Approx OBTJ YTD	Aug-05	5 Mnth5 Mnth Target**	Diff from Target
Carmarthenshire	1984	1656	19.8%
Ceredigion	815	723	12.7%
Pembrokeshire	1390	1225	13.4%
Powys	1409	1007	40.0%
Force	5598	4611	21.4%

Target Pro-Rata Based on 5 months performance

** - This is the target profile required to attain the end of year target of 11,068 OBTJ. (The divisional target breakdown is based on mirroring 2004/05 contribution toward total force sanction detections).

Sanction Detection Volume Performance YTD – Current Clear-Up Breakdown (Annual % Change)

The current volume of sanction detections (December 05 YTD) is up 18% on the same period last year to stand at 8,970 (up 1,343 from 7,627*).

Area – December YTD	Charged	Summons	Cautioned	TIC	PND	F. Warning for Cannabis*	Total Sanction Dets
Carmarthenshire	1519 (+5%)	46 (-11%)	1017 (+30%)	113 (-40%)	185 (75 SPLY)	290 (+3%)	3170 (+15%)
Ceredigion	633 (+6%)	49 (+53%)	478 (+15%)	42 (+35%)	38 (17 SPLY)	93 (-11%)	1333 (+12%)
Pembrokeshire	934 (-1%)	58 (+21%)	837 (+11%)	149 (44 SPLY)	130 (61 SPLY)	131 (-11%)	2239 (+13%)
Powys	970 (+7%)	96(+92%)	783 (+36%)	79 (+27%)	205 (34 SPLY)	95 (+76%)	2228 (+33%)
Force	4056 (+4%)	249(+37%)	3115 (+27%)	383 (+18%)	558 (187 SPLY)	609 (+4%)	8970 (+18%)

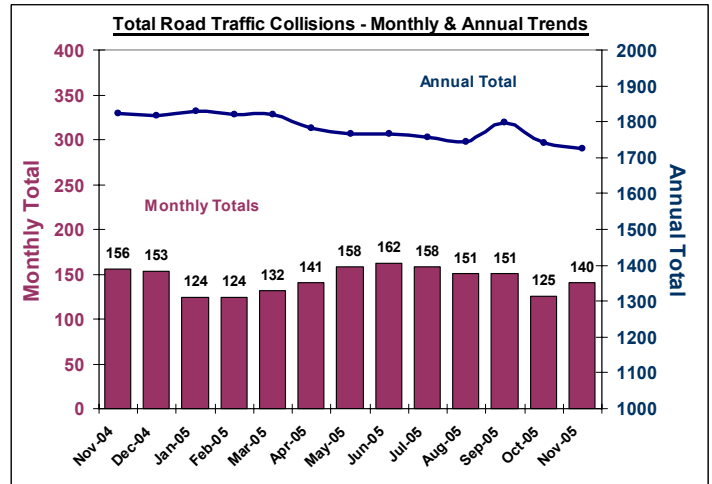
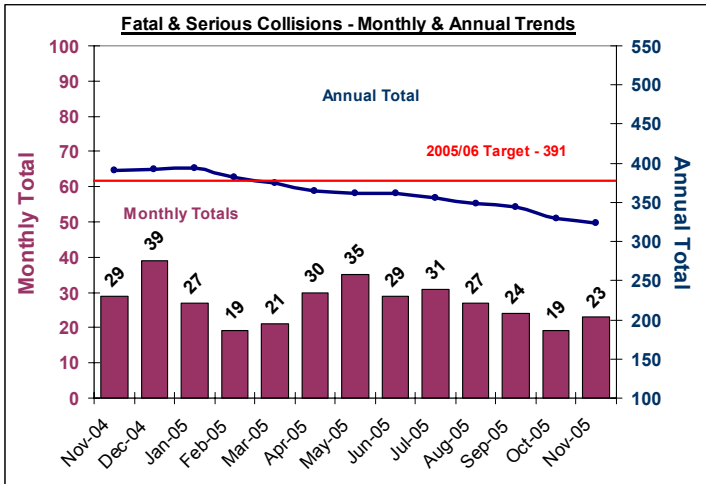
* - SPLY Data Approximate

Road Traffic Collisions

November Monthly Data Latest available

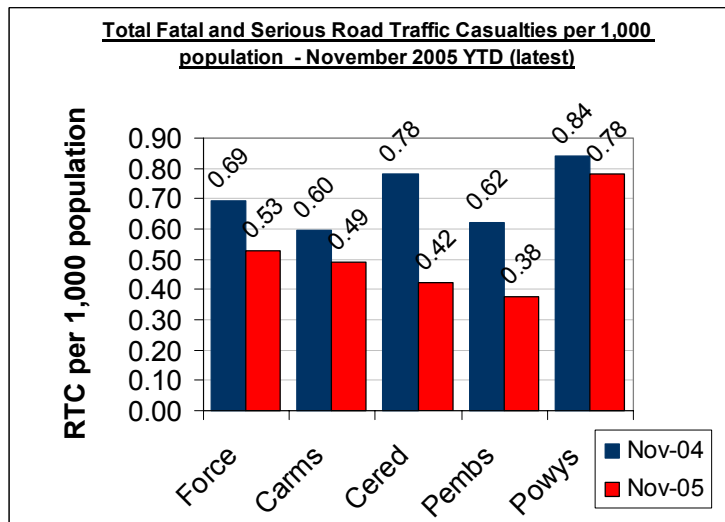
TARGET 2005/06 : 391 FATAL AND SERIOUS COLLISIONS (0.8 PER 1,000 POPULATION) – USING 2004 MID -YEAR ESTIMATES

Road Traffic Collisions – Monthly & Annual Trends (November 05 - latest data)



Performance YTD (November 2005 YTD - latest)	FORCE	Carms	Cered	Pembs	Powys
Fatal Road Collisions YTD	31	12	2	3	14
Serious & Fatal Road Collisions YTD	218	70	30	35	83
Indicator - Per 1,000 population	0.45	0.40	0.40	0.31	0.66
On-Target (0.8 end of year – 0.53 pro-rata)	YES	YES	YES	YES	NO
Fatal (SPLY)	36	11	6	5	14
Serious & Fatal (SPLY)	284	85	53	59	87

Road Traffic Casualties – 2010 Target Progress



November 2005 YTD (latest)	Force	Carms	Cered	Pembs	Powys
Number of people killed or seriously injured casualties	266	87	33	44	102
At 2010 Target Level*	YES	YES	YES	YES	YES
Number of Children (<=15 yrs) killed or seriously injured	15	6	4	3	2
At 2010 Target Level*	YES	YES	YES	YES	YES
Number of persons with slight injuries	1504	553	253	332	366
At 2010 Target Level*	NO	NO	NO	NO	NO

* 2010 Targets Established with Roads Policing Strategy, Operations Dept & National Road Policing Targets. Progress towards Pro-Rata year-end 2010 target illustrated here

Source: MAAP RTC Database 10/01/06

PPAF Statutory Performance Indicator Summary

Reported Quarterly

HOME OFFICE POLICE PERFORMANCE ASSESSMENT FRAMEWORK MEASURES

This Data is Updated Quarterly – Latest: April – December 2005 (except where stated).

Activity	SPI Number	Indicator Description	Apr-Dec 2004 Performance	Apr-Dec 2005 Performance	Change	2005/06 End of Year Target
User Satisfaction Measures	1a*	Satisfaction of victims of domestic burglary, violent crime, vehicle crime and road traffic collisions with respect to - a) making contact with the Police	90.8%	91.0%	0.1%	NEW
	1b*	b) action taken by the Police	82.5%	84.6%	2.0%	NEW
	1c*	c) Being kept informed of progress	67.8%	72.8%	5.1%	NEW
	1d*	d) Their treatment by staff	92.0%	91.5%	-0.5%	NEW
	1e*	e) the overall service provided	85.20%	85.8%	0.6%	NEW
Confidence	2a^	Using the BCS, the % of people who think their local police do a good job	NEW	NEW	-	NEW
Fairness and Equality Measures	3a*	Satisfaction of victims of racist incidents with respect to the overall service provided	84.7%	85.0%	0.3%	NEW
	3b*	From SPI 1(e), comparison of satisfaction for white users and users from visible minority ethnic groups with respect to the overall service provided.	White - 87.0% Ethnic - 83.4%	White - 85.1% Ethnic - 84.9%	White -1.9% Ethnic +1.5%	NEW
	3c(i)	(i) % of PACE stop/searches which lead to arrest by ethnicity	N/A	N/A	N/A	N/A
	3c(ii)	(ii) % of other (non-PACE) stop/searches which lead to arrest by ethnicity	N/A	N/A	N/A	N/A
	3d**	Comparison of percentage detected of violence against the person offences by ethnicity of the victim (sanction detections)	White - 59.9% Ethnic - 63.7%	White - 42.1% Ethnic - 37.6%	White -18% Ethnic -26%	White - 31% Ethnic - 31%
	3e*	Proportion of police recruits (ethnic) compared to the proportion of people from minority ethnic groups in the economically active population.	(No ethnic recruits)	(No ethnic recruits)	-	NEW
	3f*	Ratio of officers from minority ethnic groups resigning to all officer resignations	00:03	00:04	NEW	NEW
3g*	% of female police officers compared to overall Force strength.	18.7%	20.3%	1.6%	19%	
Measures of Crime Levels	4a^	Using the British Crime Survey (a) the risk of personal crime; and	4%	8%	4.0%	8%
	4b^	(b) the risk of household crime.	12%	11%	-1.0%	11%
	5a**	(a) Domestic Burglaries per 1,000 households.	4.07 (839 crimes)	3.05 (620 crimes)	-1.02 (-219 crimes)	5.06 (1042 crimes)
	5b**	(b) Violent crime per 1,000 population.	13.86 (6983 crimes)	12.88 (6489 crimes)	-0.98 (494 crimes)	17.60 (8593 crimes)
	5c**	(c) Robberies per 1,000 population.	0.063 (32 crimes)	0.062 (31 crimes)	-0.001 (-1 crime)	0.1 (48 crimes)
	5d**	(d) Vehicle crime per 1,000 population.	3.69 (1861 crimes)	2.91 (1464 crimes)	-0.78 (-397 crimes)	4.77 (2331 crimes)
	5e**	(e) Life threatening crime and gun crime per 1,000 population.	0.18 (91 crimes)	0.22 (111 crimes)	+0.04 (+20 crimes)	0.28
Offences Brought to Justice Measures (OBTJ)	6a**	Number of notifiable/recorded offences resulting in convictions, caution or taken into consideration at court	4,481	5,598	+1117 OBTJ (+24.9%)	11,068
	6b**	% of notifiable/recorded offences resulting in convictions, caution or taken into consideration at court	30.4%	40.1%	9.7%	NEW
Detection Measure	7a**	% of notifiable/recorded offences resulting in charge, summons, caution or taken into consideration at court ('sanction detections')	30.1%	37.9%	7.8%	31%
Domestic Violence Measures	8a**	Percentage of domestic violence incidents with a power of arrest where an arrest was made relating to the incident.	80.6% (906 arrests)	84.5% (1119 arrests)	+213 arrests	80%
Traffic Measures	9a(i)**	(i) Number of people killed in under 30 days or seriously injured in road traffic collisions	284 fatal or serious collisions	218 fatal or serious collisions	-66 collisions	391 fatal or serious collisions
	9a(ii)**	(ii) Number of persons killed or seriously injured in road traffic collisions per 100million vehicle kilometres travelled.	5.78	4.44	-1.34	8.13
Quality of life Measures	10a^	Using the British Crime Survey a) fear of crime	11%	9%	-2%	10%
	10b^	Perceptions of anti-social behaviour; and	NEW	NEW	NEW	NEW
	10c^	Perceptions of local drug use / drug dealing	NEW	NEW	NEW	NEW
Resource Use Measures	11a^	Percentage of police officer time spent on frontline duties	65.4%	-	-	68.5%
	12a	Delivery of cashable and non-cashable efficiency targets	NEW	NEW	NEW	NEW
	13a*	Average number of working hours lost due to sickness per police officer.	47.5 hours	38.3 hours	-19%	92.8 hours
	13b*	Average number of working hours lost due to sickness by police staff.	50.3 hours	35.9 hours	-28%	80.7 hours