



Heddlu Dyfed-Powys Police

CRIME TRENDS UPDATE **February 2006**

Contents:

Headline Statistics	2
Most Frequent Recorded Offences Profile	3
Recorded Crimes and Detection Rates	4
Domestic Burglaries and Detection Rates	5
Other Burglary and Detection Rates	6
Violent Crime and Detection Rates	7
Vehicle Crime and Detection Rates	8
Criminal Damage and Detection Rates	9
Drugs Statistics and Detection Rates	10
Section Level Sanction Detection Summary	11
Divisional Contribution to Targets	12
Domestic Incidents	16
User Satisfaction	17
Narrowing the Justice Gap	18
Road Traffic Collisions	19
PPAF Statutory Performance Indicator Summary	20

Heddlu Dyfed Powys Police: Corporate Services



Recorded Crime:

- Total Recorded Crime is down by 6% (-1,815 crimes) compared to the same period last year (SPLY) to stand at 27,966 crimes. The monthly figure for February 2006 stands at 2,123 a fall of 3% (-72 offences) on the same month in 2005, and 4% (-81 offences) down on the preceding month January 2006.
- Recorded detection performance has a total detection rate for the force at 45% (12,574 total detections) compared with 42% the previous year. The volume of total detections has increased by 1% (+109 detections). The sanction detection rate stands at 39% - this is consistent with the target rate of 31% (and compared with 32% recorded last year). The volume of sanction detections has increased by 1,542 or 16%.

Domestic Burglary:

- Total Domestic Burglary offences are down by 24% (-232 crimes) compared to the same period last year (SPLY) to stand at 739 crimes. The monthly figure for February 2006 stands at 66, an increase of 47% (+21 offences) on the same month in 2005, and a 25% (+13 offences) increase on the preceding month January 2006.
- Recorded detection performance remains higher than last year, with the total detection rate for the force at 24% (177 detections) compared with 23% the previous year. The volume of total detections has decreased by 23% (-54) as a consequence of this substantial fall in offences. The sanction detection rate stands at 23% (up from 20% last year) with the volume of sanction detections falling by 11% (-20).

Violent Crimes:

- Total Violent crime remains down by 7% (-561 crimes) compared to the same period last year (SPLY) to stand at 7,640 crimes. The monthly figure for February 2006 stands at 572 a fall of 6% (-33 offences) on the same month in 2005, and a 1% (-7 offences) decrease on the preceding month January 2006.
- Recorded detection performance stands at a total detection rate for the force of 66% (5,019 detections) up from 62% last year. The volume of total detections has decreased by 2% (-93) over this period. Furthermore the sanction detection rate stands at 53% (compared with 40% last year) with the volume recorded up by 26% (+830 sanction detections).

Vehicle Crime:

- Total Vehicle crime is down by 19% (-410 crimes) compared to the same period last year (SPLY) to stand at 1,734 crimes. The monthly figure for February 2006 stands at 139 a rise of 9% (+12 offences) on the same month in 2005, and a 6% increase (+8 offences) on the preceding month January 2006.
- Recorded total detection stands at 18% (316 detections) down from 21% the previous year. The volume of total detections has decreased by 28% (-125) as a consequence of this fall in recorded offences. The sanction detection rate stands at 17% (compared with 18% last year) with the volume down considerably (-93 sanction detections or 24%).

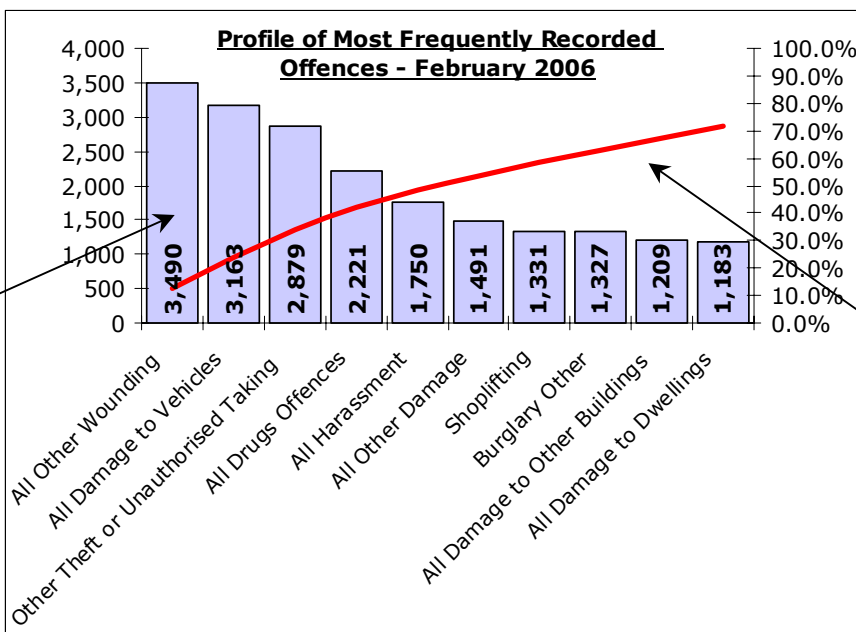
Criminal Damage:

- Total Criminal Damage has fallen by 1% (-63 crimes) compared to the same period last year (SPLY) to stand at 7,046 (excl Arson & Threat to Commit CD). The monthly figure for February 2006 stands at 585 a rise of 25% (+116 offences) on the same month in 2005, and an increase of 8% (+41) on the previous month January 2006.
- Recorded detection performance stands at a total detection rate for the force of 27% (1,868 detections) up from 26% last year. The volume of total detections has increased by 3% (+58) over this period. The sanction detection rate stands at 22% (compared with 17% last year) with the volume up a notable 29% over this period (+344 sanction detections).

Most Frequent Recorded Offences Profile

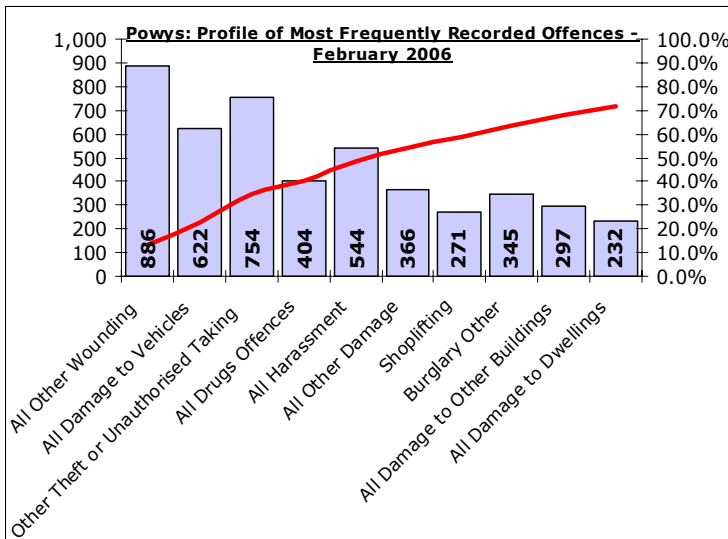
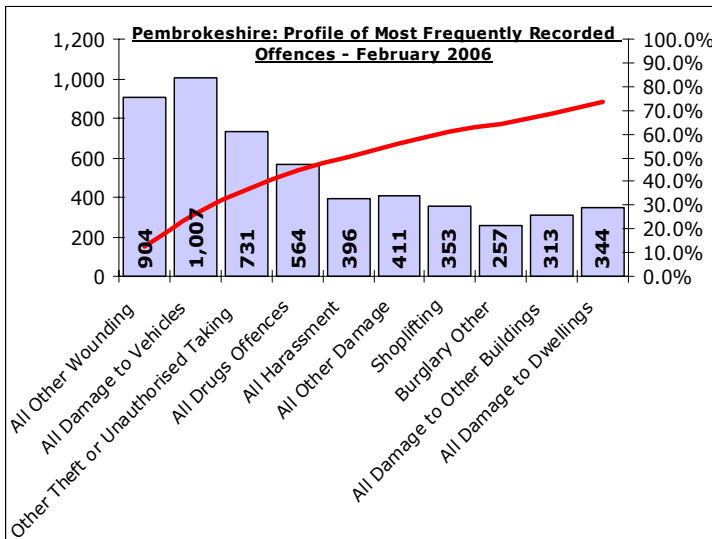
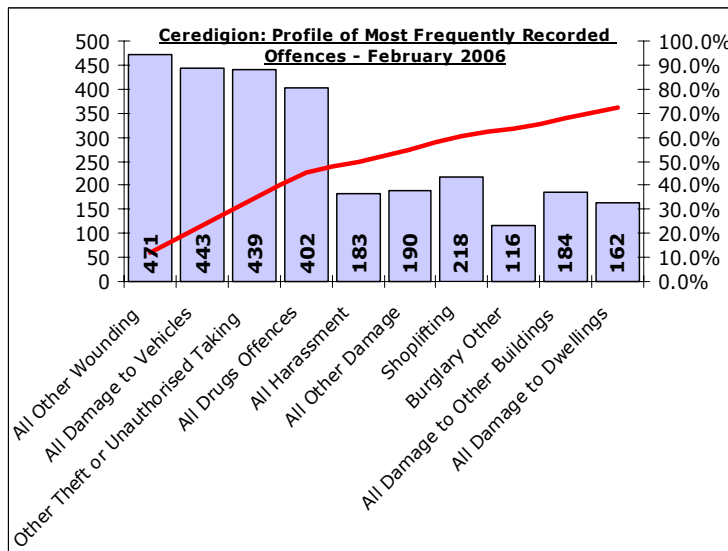
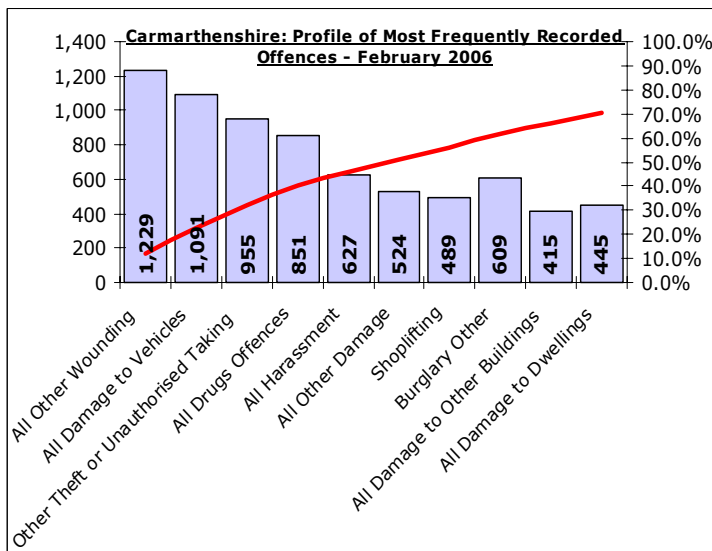
DYFED-POWYS POLICE

February 2006 YTD (Note : Divisional profiles are in the same sequence as forces' most frequent categories – for comparison)



Recorded offences in each category in order of volume.
(Note these can include a number of sub-categories)

The cumulative contribution of these offence categories toward the total volume of offences recorded.

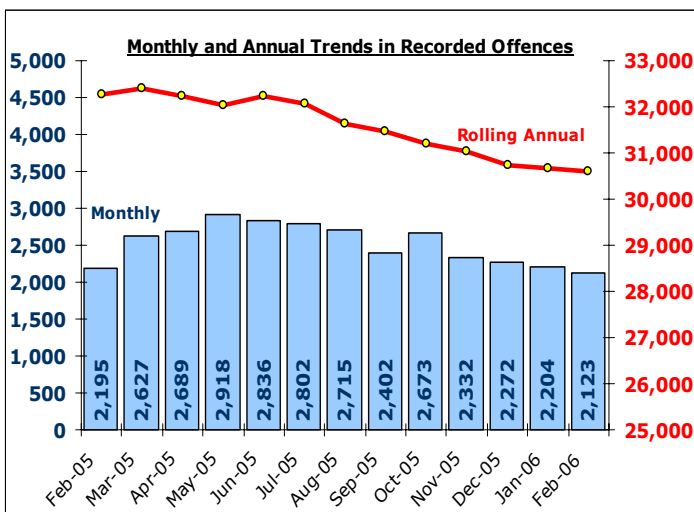


Total Recorded Crime

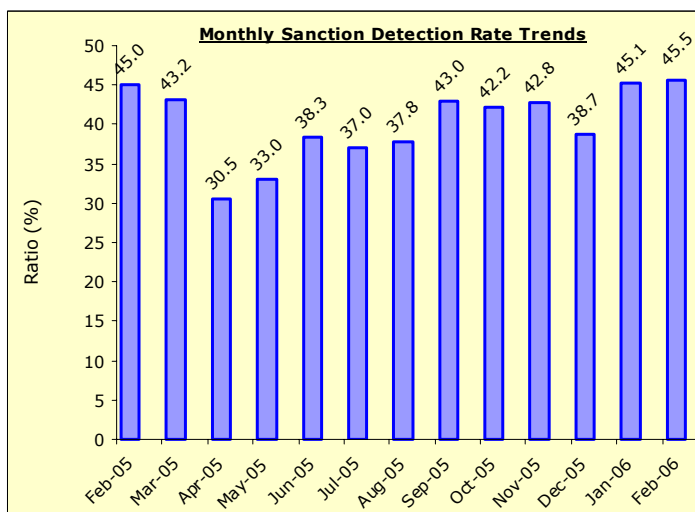
DYFED-POWYS POLICE

TARGET 2005/06 : NO REDUCTION TARGET – 31% SANCTION DETECTION RATE

Recorded Crime Levels – February 2006

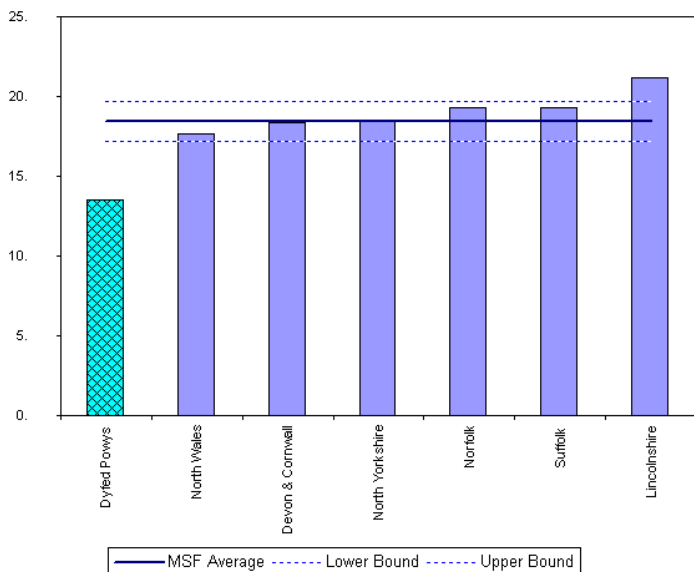


Monthly Sanction Detection Rates – February 2006

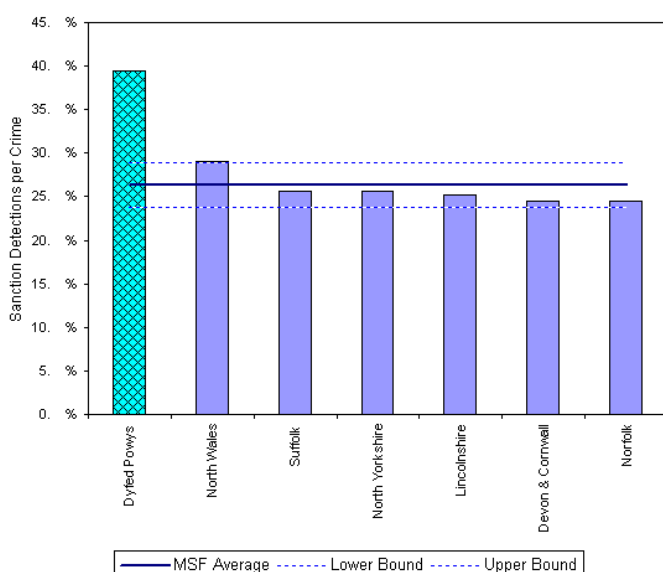


Total Recorded Crimes: February 2006 YTD	February 2006 YTD			Detection Rates YTD		Annual Trends - SPL Y		
	Crimes	Sanction Dets	Total Dets	Sanction %	Total %	Crimes SPL Y	Change	% Change
FORCE	27,966	10,932	12,574	39.1%	45.0%	29,781	- 1,815	- 6.1%
CARMS	10,303	3,902	4,395	37.9%	42.7%	11,501	- 1,198	- 10.4%
CERED	3,885	1,609	1,881	41.4%	48.4%	4,112	- 227	- 5.5%
PEMBS	7,182	2,751	3,228	38.3%	44.9%	7,631	- 449	- 5.9%
POWYS	6,596	2,670	3,070	40.5%	46.5%	6,537	+ 59	+ 0.9%

MSF – Crimes per 1000 Residents 01 November 2005 – 31 January 2006 (latest quarter)



MSF – Sanction detections (annual): 01 February 2005 – 31 January 2006

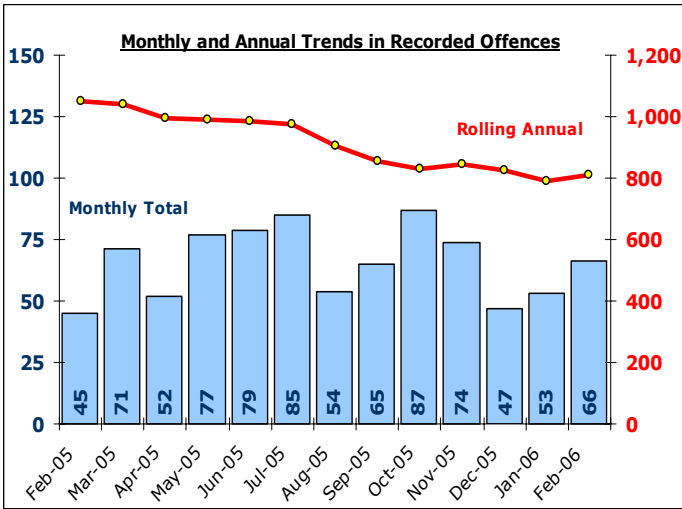


Domestic Burglary

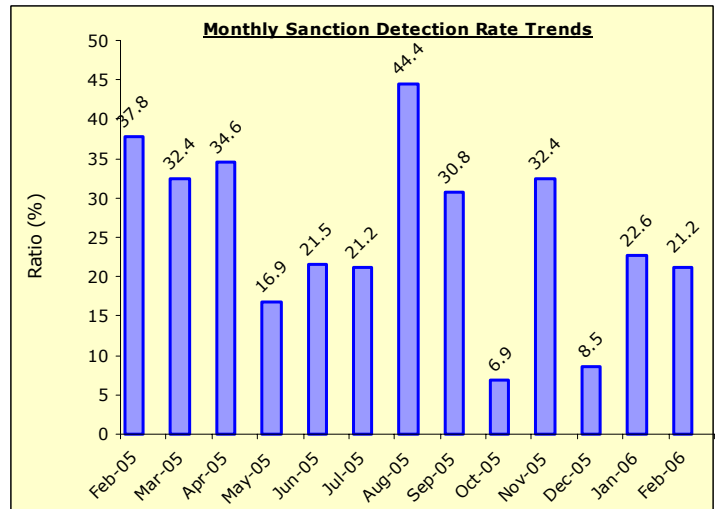
DYFED-POWYS POLICE

TARGET 2005/06 : 0% Increase in offences & 28% total detection rate

Recorded Crime Levels – February 2006

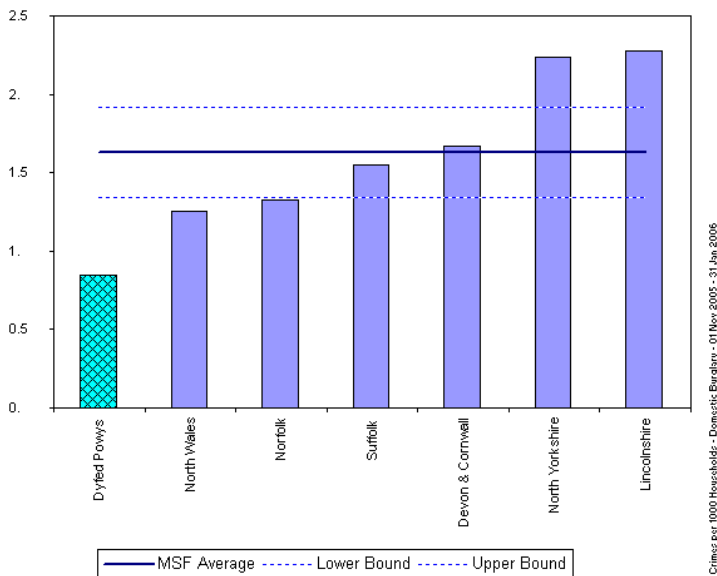


Monthly Sanction Detection Rates – February 2006

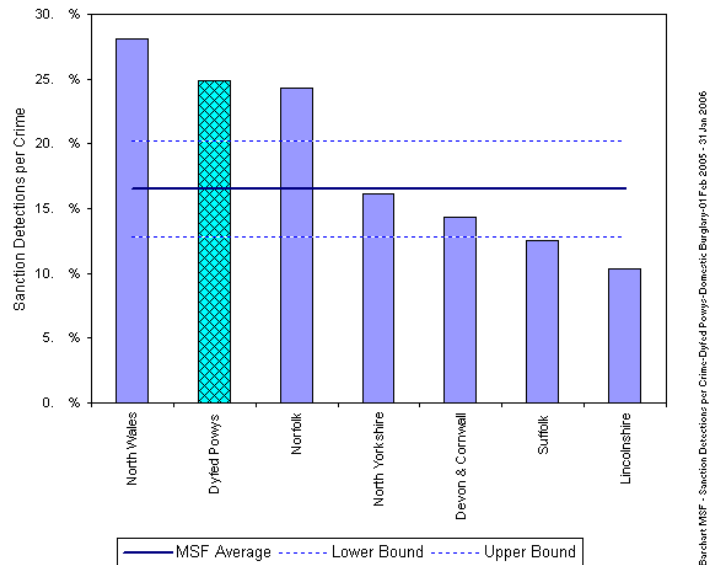


Total Domestic Burglary: February 2006 YTD	February 2006 YTD			Detection Rates YTD		Annual Trends - SPLY		
	Crimes	Sanction Dets	Total Dets	Sanction %	Total %	Crimes SPLY	Change	% Change
FORCE	739	170	177	23.0%	24.0%	971	- 232	- 23.9%
CARMS	328	82	82	25.0%	25.0%	417	- 89	- 21.3%
CERED	88	17	17	19.3%	19.3%	109	- 21	- 19.3%
PEMBS	162	37	43	22.8%	26.5%	233	- 71	- 30.5%
POWYS	161	34	35	21.1%	21.7%	212	- 51	- 24.1%

MSF – Crimes per 1000 Residents 01 November 2005 – 31 January 2006 (latest quarter)



MSF – Sanction detections (annual): 01 February 2005 – 31 January 2006



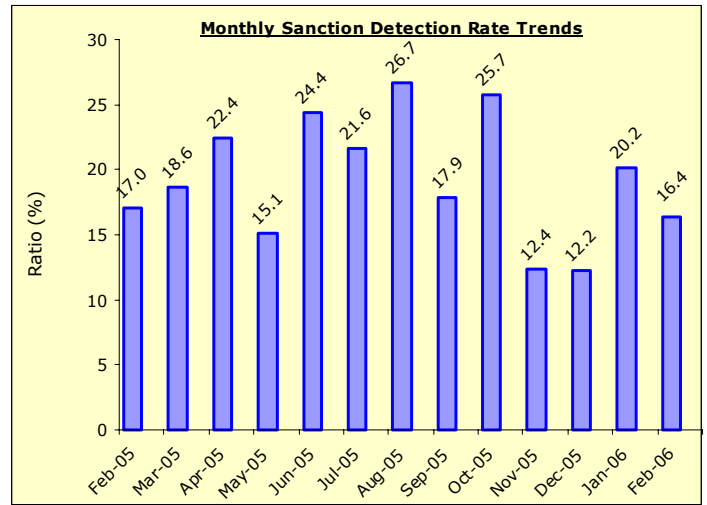
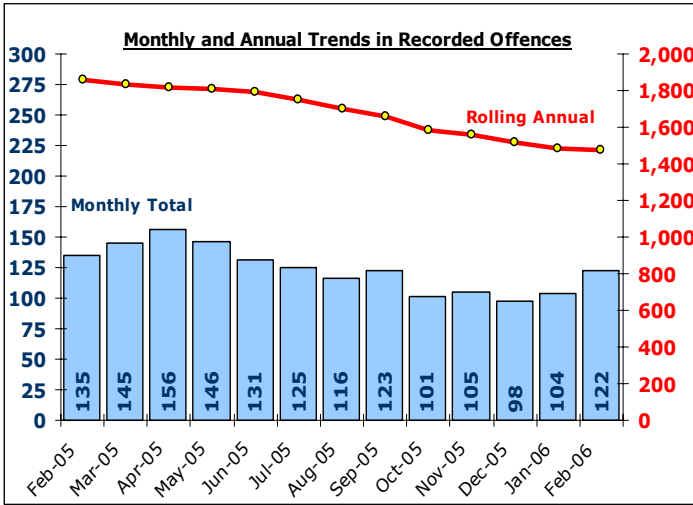
Other Burglary

DYFED-POWYS POLICE

TARGET 2005/06 : No Target

Recorded Crime Levels – February 2006

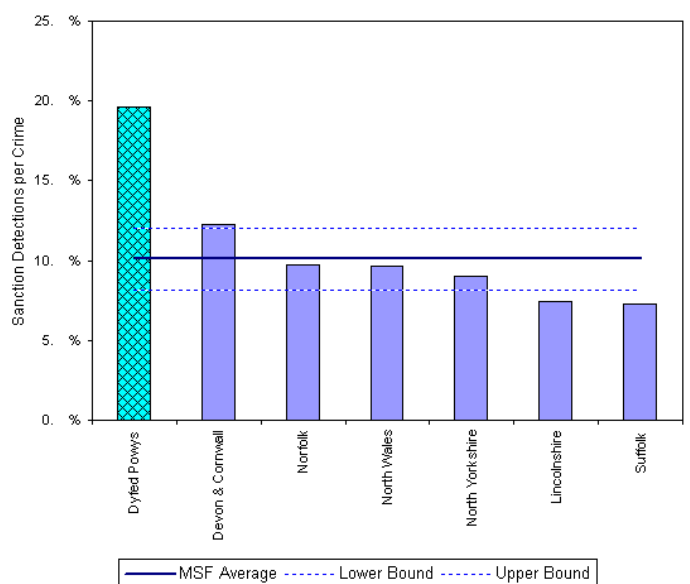
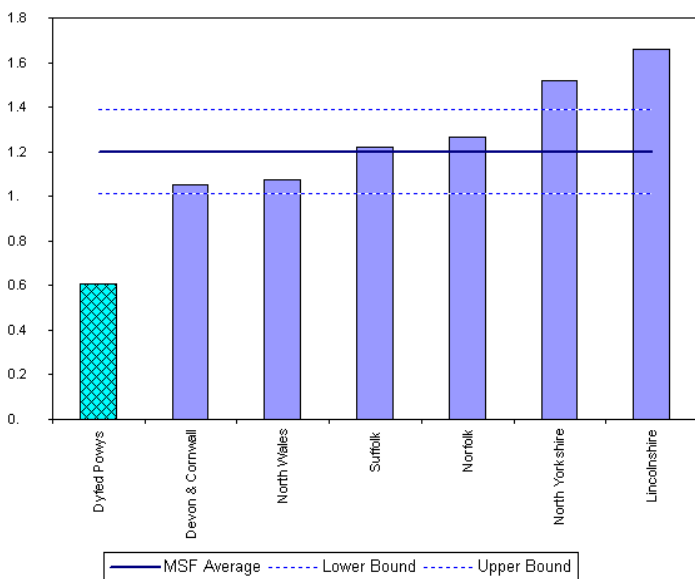
Monthly Sanction Detection Rates – February 2006



Total Other Burglary Crimes: February 2006 YTD	February 2006 YTD			Detection Rates YTD		Annual Trends - SPLY		
	Crimes	Sanction Dets	Total Dets	Sanction %	Total %	Crimes SPLY	Change	% Change
FORCE	1,327	261	276	19.7%	20.8%	1,688	- 361	- 21.4%
CARMS	609	118	120	19.4%	19.7%	795	- 186	- 23.4%
CERED	116	18	24	15.5%	20.7%	188	- 72	- 38.3%
PEMBS	257	54	57	21.0%	22.2%	305	- 48	- 15.7%
POWYS	345	71	75	20.6%	21.7%	400	- 55	- 13.8%

MSF – Crimes per 1000 Residents 01 November 2005 – 31 January 2006 (latest quarter)

MSF – Sanction detections (annual): 01 February 2005 – 31 January 2006

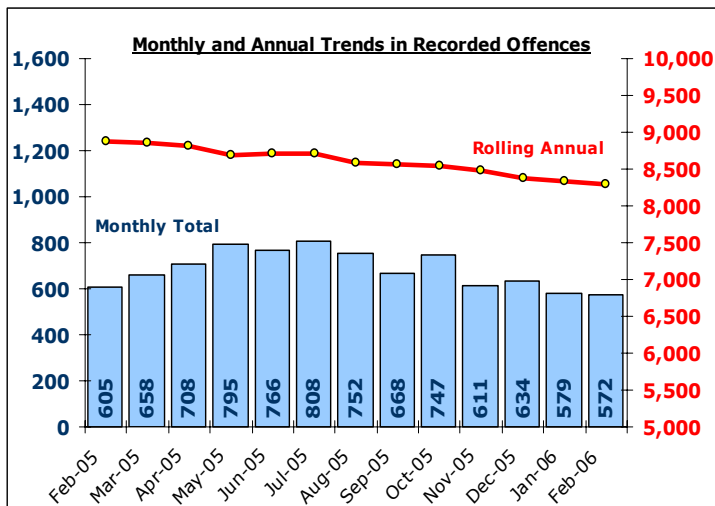


Total Violent Crime

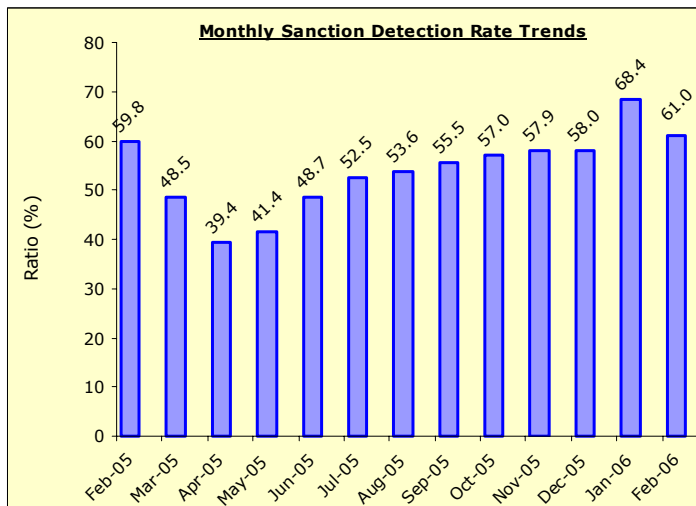
DYFED-POWYS POLICE

TARGET 2005/06 – 3% Reduction in offences & 60% total detection rate

Recorded Crime Levels – February 2006

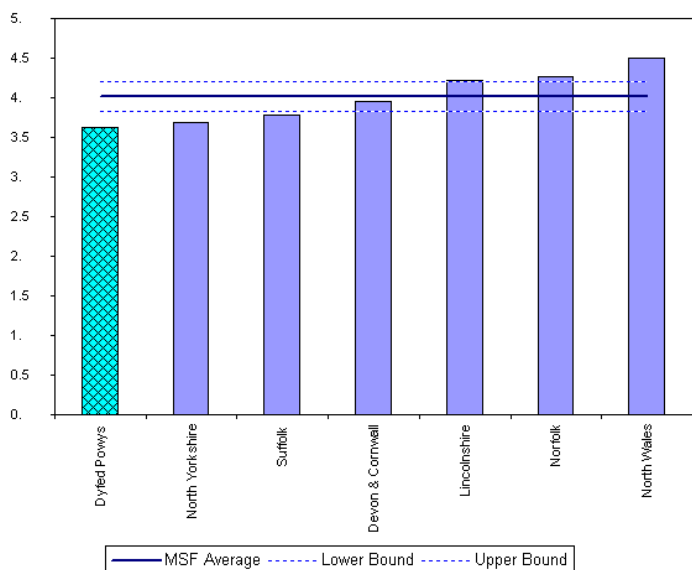


Monthly Sanction Detection Rates – February 2006

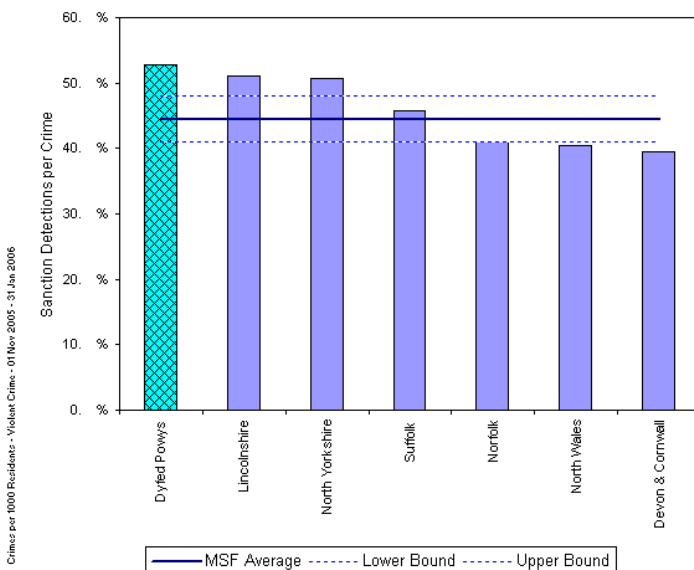


Total Violent Crimes: February 2006 YTD	February 2006 YTD			Detection Rates YTD		Annual Trends - SPL Y		
	Crimes	Sanction Dets	Total Dets	Sanction %	Total %	Crimes SPL Y	Change	% Change
FORCE	7,640	4,072	5,019	53.3%	65.7%	8,201	- 561	- 6.8%
CARMS	2,735	1,402	1,677	51.3%	61.3%	2,999	- 264	- 8.8%
CERED	980	528	685	53.9%	69.9%	1,253	- 273	- 21.8%
PEMBS	1,866	968	1,244	51.9%	66.7%	2,101	- 235	- 11.2%
POWYS	2,059	1,174	1,413	57.0%	68.6%	1,848	+ 211	+ 11.4%

MSF – Crimes per 1000 Residents 01 November 2005 – 31 January 2006 (latest quarter)



MSF – Sanction detections (annual): 01 February 2005 – 31 January 2006

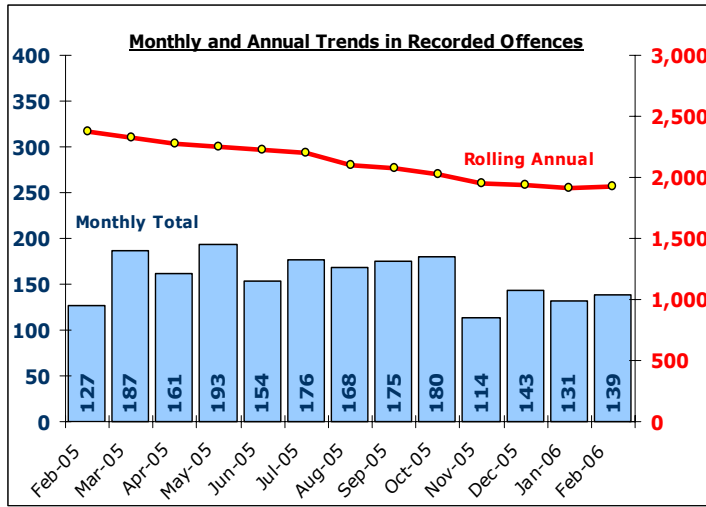


Total Vehicle Crime

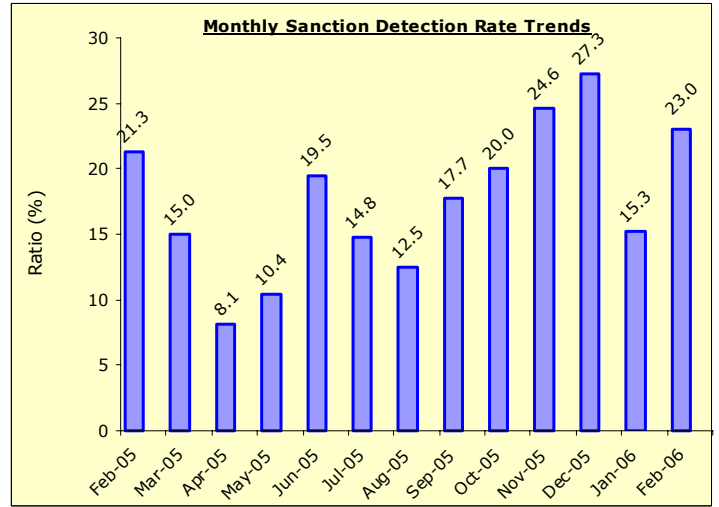
DYFED-POWYS POLICE

TARGET 2005/06 : 0% Increase in offences & 20% total detection rate

Recorded Crime Levels – February 2006

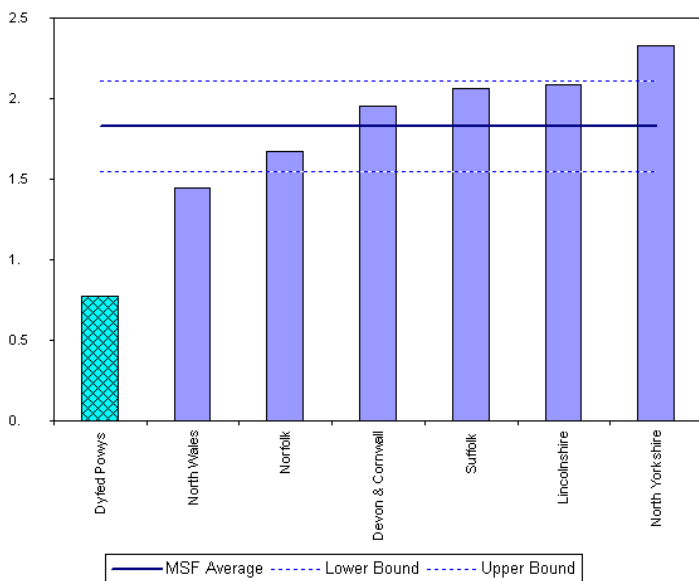


Monthly Sanction Detection Rates – February 2006



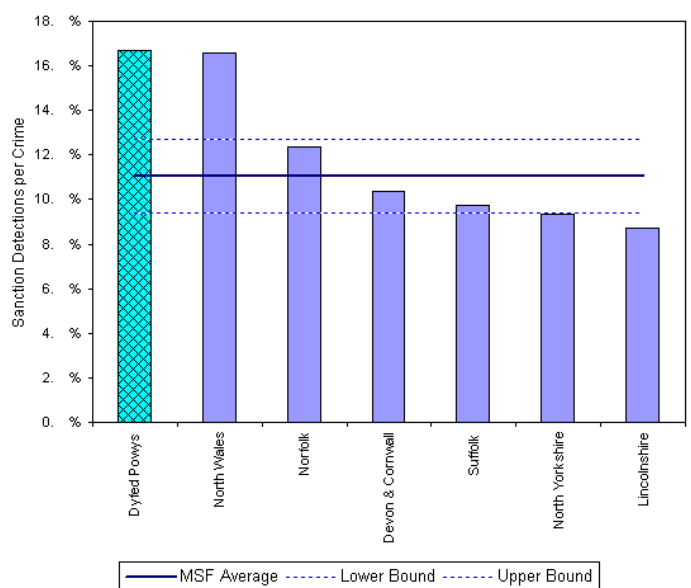
Total Vehicle Crimes: February 2006 YTD	February 2006 YTD			Detection Rates YTD		Annual Trends - SPL		
	Crimes	Sanction Dets	Total Dets	Sanction %	Total %	Crimes SPL	Change	% Change
FORCE	1,734	296	316	17.1%	18.2%	2,144	- 410	- 19.1%
CARMS	744	115	120	15.5%	16.1%	907	- 163	- 18.0%
CERED	191	33	37	17.3%	19.4%	200	- 9	- 4.5%
PEMBS	423	79	86	18.7%	20.3%	587	- 164	- 27.9%
POWYS	376	69	73	18.4%	19.4%	450	- 74	- 16.4%

MSF – Crimes per 1000 Residents 01 November 2005 – 31 January 2006 (latest quarter)



Crimes per 1000 Residents - Vehicle Crime (excluding Vehicle Inference) - 01 Nov-2005 - 31 Jan-2006

MSF – Sanction detections (annual): 01 February 2005 – 31 January 2006



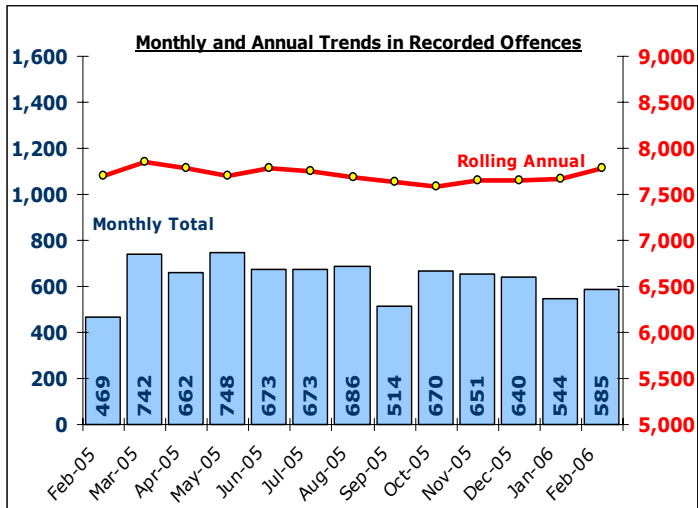
MSF - Sanction Detections per Crime-Dyfed Powys-Vehicle Crime (excluding Vehicle Inference)-01 Feb-2005 - 31 Jan-2006

Total Criminal Damage

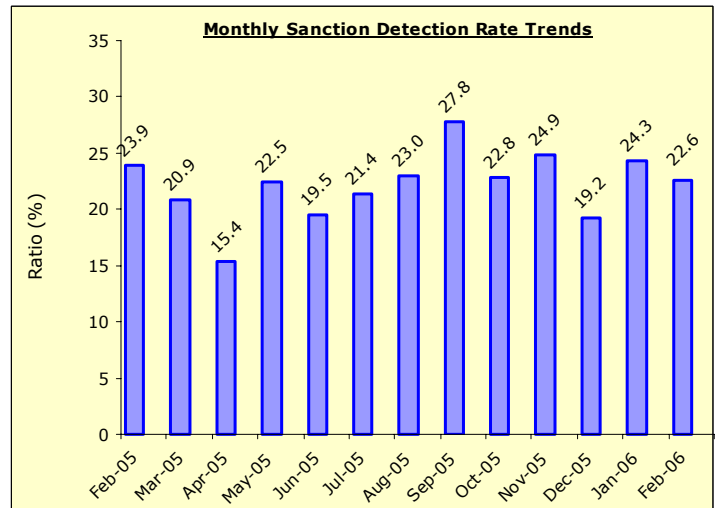
EXCLUDES ARSON % THREAT TO COMMIT CRIMINAL DAMAGE (HOC 56 & 59)

TARGET 2005/06 : NO TARGET

Recorded Crime Levels – February 2006

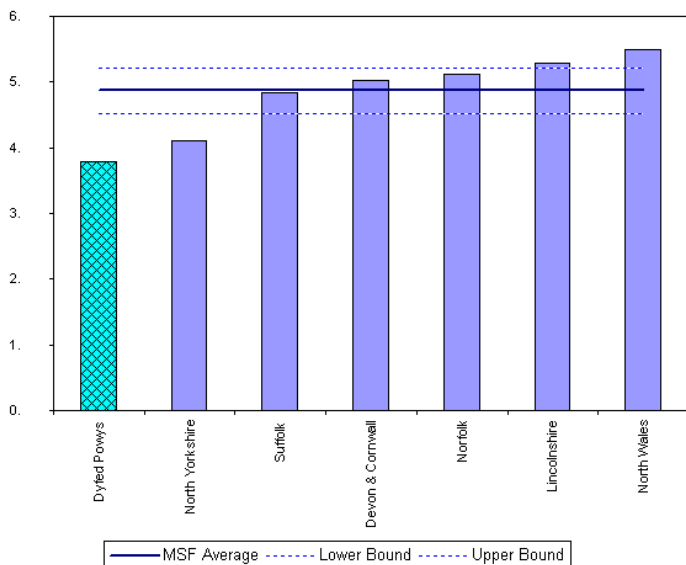


Monthly Sanction Detection Rates – February 2006

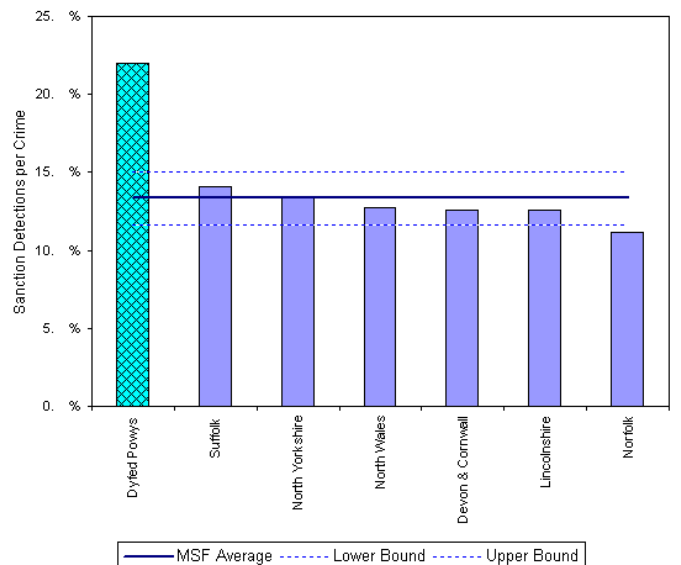


Total Criminal Damage: February 2006 YTD	February 2006 YTD			Detection Rates YTD		Annual Trends - SPLY		
	Crimes	Sanction Dets	Total Dets	Sanction %	Total %	Crimes SPLY	Change	% Change
FORCE	7,046	1,548	1,868	22.0%	26.5%	7,109	- 63	- 0.9%
CARMS	2,475	506	596	20.4%	24.1%	2,655	- 180	- 6.8%
CERED	979	218	256	22.3%	26.1%	865	+ 114	+ 13.2%
PEMBS	2,075	459	571	22.1%	27.5%	2,040	+ 35	+ 1.7%
POWYS	1,517	365	445	24.1%	29.3%	1,549	- 32	- 2.1%

MSF – Crimes per 1000 Residents 01 November 2005 – 31 January 2006 (latest quarter)



MSF – Sanction detections (annual): 01 February 2005 – 31 January 2006

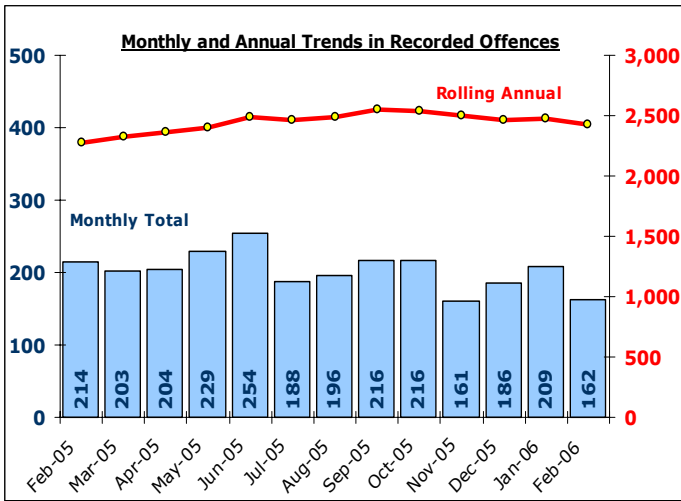


Total Drug Offences

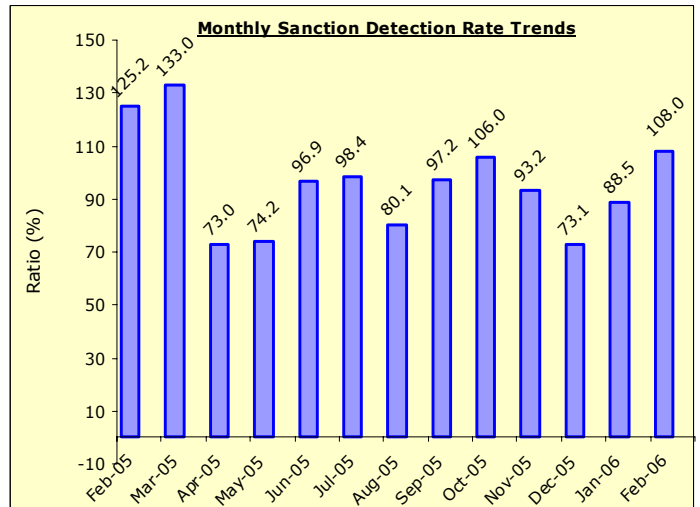
DYFED-POWYS POLICE

TARGET 2005/06 : NO TARGET

Recorded Crime Levels – February 2006

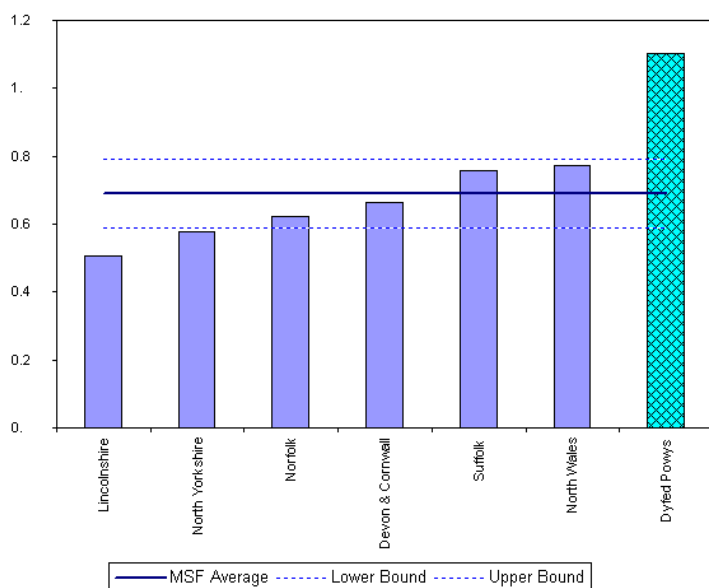


Monthly Sanction Detection Rates – February

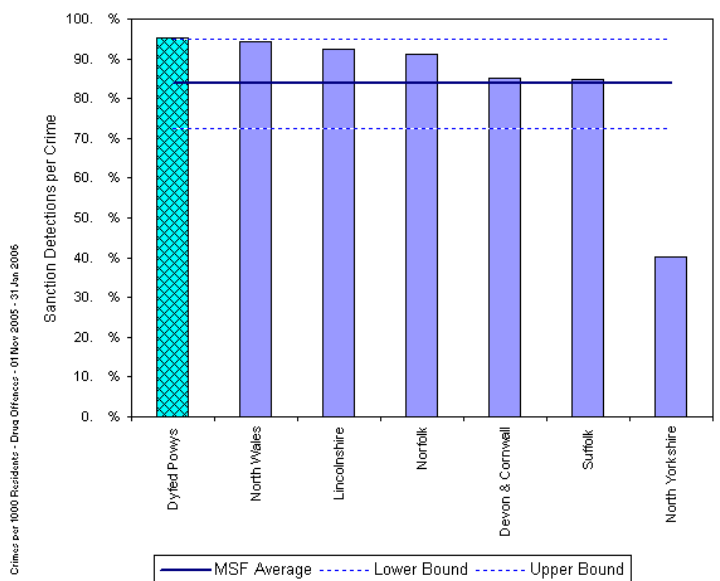


Total Drug Offences: February 2006 YTD	February 2006 YTD			Detection Rates YTD		Annual Trends - SPLY		
	Crimes	Sanction Dets	Total Dets	Sanction %	Total %	Crimes SPLY	Change	% Change
FORCE	2,221	1,992	2,132	89.7%	96.0%	2,124	+ 97	+ 4.6%
CARMS	851	762	841	89.5%	98.8%	861	- 10	- 1.2%
CERED	402	376	387	93.5%	96.3%	387	+ 15	+ 3.9%
PEMBS	564	493	517	87.4%	91.7%	551	+ 13	+ 2.4%
POWYS	404	361	387	89.4%	95.8%	325	+ 79	+ 24.3%

MSF – Crimes per 1000 Residents 01 November 2005 – 31 January 2006 (latest quarter)



MSF – Sanction detections (annual): 01 February 2005 – 31 January 2006



Section Level Sanction Detection Summary

DYFED-POWYS POLICE

TARGET 2005/06 : 31% SANCTION DETECTION RATE

Sanction Detections Performance February 2006 YTD: Total Recorded

Sanction Detection Rate	Recorded Crimes	Detected	Det Ratio	Recorded Crimes SPLY	Diff	% Change
THE FORCE	27,966	10,932	39.1%	29,781	- 1,815	- 6.1%
Carmarthenshire	10,303	3,902	37.9%	11,501	- 1,198	- 10.4%
Ammanford (AA)	1,288	540	41.9%	1,341	- 53	- 4.0%
Carmarthen (AC)	2,455	1,009	41.1%	2,822	- 367	- 13.0%
Llanelli (AL)	5,128	1,805	35.2%	5,842	- 714	- 12.2%
Towy Gwendraeth (AT)	1,432	548	38.3%	1,496	- 64	- 4.3%
Ceredigion	3,885	1,609	41.4%	4,112	- 227	- 5.5%
Aberystwyth (BA)	2,113	918	43.4%	2,141	- 28	- 1.3%
Aberaeron (BB)	376	140	37.2%	487	- 111	- 22.8%
Cardigan (BC)	911	349	38.3%	1,007	- 96	- 9.5%
Lampeter (BL)	485	202	41.6%	477	+ 8	+ 1.7%
Pembrokeshire	7,182	2,751	38.3%	7,631	- 449	- 5.9%
Fishguard (CF)	847	309	36.5%	879	- 32	- 3.6%
Haverfordwest (CH)	1,843	780	42.3%	2,017	- 174	- 8.6%
Milford Haven (CM)	1,404	570	40.6%	1,571	- 167	- 10.6%
Pembroke Dock (CP)	1,836	649	35.3%	1,721	+ 115	+ 6.7%
Tenby (CT)	1,252	443	35.4%	1,443	- 191	- 13.2%
Powys	6,596	2,670	40.5%	6,537	+ 59	+ 0.9%
Brecon (DB)	1,703	649	38.1%	1,465	+ 238	+ 16.2%
Llandrindod Wells (DL)	1,204	485	40.3%	1,295	- 91	- 7.0%
Newtown (DN)	2,070	831	40.1%	1,918	+ 152	+ 7.9%
Welshpool (DW)	1,106	494	44.7%	1,239	- 133	- 10.7%
Ystradgynlais (DY)	513	211	41.1%	620	- 107	- 17.3%

Sanction Detection Performance February 2006 YTD: Domestic Burglary, Violent Crime & Vehicle Crime

Sanction Detections	Total Domestic Burglary			Total Violent Crime			Total Vehicle Crime		
	Recorded Crimes	Detected	Det Ratio	Recorded Crimes	Detected	Det Ratio	Recorded Crimes	Detected	Det Ratio
THE FORCE	739	170	23.0%	7,640	4,072	53.3%	1,734	296	17.1%
Carmarthenshire	328	82	25.0%	2,735	1,402	51.3%	744	115	15.5%
Ammanford (AA)	24	9	37.5%	284	138	48.6%	100	15	15.0%
Carmarthen (AC)	47	9	19.1%	711	393	55.3%	136	22	16.2%
Llanelli (AL)	207	48	23.2%	1,380	675	48.9%	401	54	13.5%
Towy Gwendraeth (AT)	50	16	32.0%	360	196	54.4%	107	24	22.4%
Ceredigion	88	17	19.3%	980	528	53.9%	191	33	17.3%
Aberystwyth (BA)	53	11	20.8%	520	297	57.1%	92	16	17.4%
Aberaeron (BB)	4	2	50.0%	99	58	58.6%	25	2	8.0%
Cardigan (BC)	25	3	12.0%	239	114	47.7%	39	6	15.4%
Lampeter (BL)	6	1	16.7%	122	59	48.4%	35	9	25.7%
Pembrokeshire	162	37	22.8%	1,866	968	51.9%	423	79	18.7%
Fishguard (CF)	15	4	26.7%	220	105	47.7%	45	6	13.3%
Haverfordwest (CH)	50	10	20.0%	569	283	49.7%	63	12	19.0%
Milford Haven (CM)	30	9	30.0%	372	203	54.6%	72	18	25.0%
Pembroke Dock (CP)	41	7	17.1%	427	210	49.2%	115	10	8.7%
Tenby (CT)	26	7	26.9%	278	167	60.1%	128	33	25.8%
Powys	161	34	21.1%	2,059	1,174	57.0%	376	69	18.4%
Brecon (DB)	22	2	9.1%	501	307	61.3%	107	13	12.1%
Llandrindod Wells (DL)	34	10	29.4%	396	244	61.6%	55	12	21.8%
Newtown (DN)	72	16	22.2%	680	344	50.6%	99	20	20.2%
Welshpool (DW)	24	6	25.0%	319	189	59.2%	63	17	27.0%
Ystradgynlais (DY)	9	0	0.0%	163	90	55.2%	52	7	13.5%

Target Contribution Summary - Carmarthenshire

DYFED-POWYS POLICE

GREEN/RED indicates current performance **consistent** or **not consistent** with force target reduction & detection rate

CARMARTHENSHIRE		April-February YTD		Last Year		Indicator
CRIME	Performance	Indicator	Performance	Indicator	Change & Detection	
Total Crime Recorded (per 1,000 population)	10303	59.6	11504	66.6	-10.4%	
Total Detections (% rate)	4395	42.7%	4631	40.3%	42.7%	
Burglary Dwelling (per 1,000 households)	328	4.5	417	5.7	-21.3%	
Total Detections (% rate)	82	25.0%	106	25.4%	25.0%	
Total Violent Crime (per 1,000 population)	2735	15.8	3000	17.4	-8.8%	
Total Detections (% rate)	1677	61.3%	1821	60.7%	61.3%	
Autocrime per (1,000 population)	744	4.3	907	5.2	-18.0%	
Total Detections (% rate)	120	16.1%	175	19.3%	16.1%	
Ammanford		April-February YTD		Last Year		Indicator
CRIME	Performance	Indicator	Performance	Indicator	Change & Detection	
Total Crime Recorded (per 1,000 population)	1288	39.4	1341	41.0	-4.0%	
Total Detections (% rate)	600	46.6%	626	46.7%	46.6%	
Burglary Dwelling (per 1,000 households)	24	1.7	38	2.8	-36.8%	
Total Detections (% rate)	9	37.5%	13	34.2%	37.5%	
Total Violent Crime (per 1,000 population)	284	8.7	382	11.7	-25.7%	
Total Detections (% rate)	161	56.7%	245	64.1%	56.7%	
Autocrime per (1,000 population)	100	3.1	86	2.6	16.3%	
Total Detections (% rate)	16	16.0%	13	15.1%	16.0%	
Carmarthen		April-February YTD		Last Year		Indicator
CRIME	Performance	Indicator	Performance	Indicator	Change & Detection	
Total Crime Recorded (per 1,000 population)	2455	49.6	2818	57.0	-12.9%	
Total Detections (% rate)	1121	45.7%	1311	46.5%	45.7%	
Burglary Dwelling (per 1,000 households)	47	2.3	59	2.8	-20.3%	
Total Detections (% rate)	9	19.1%	9	15.3%	19.1%	
Total Violent Crime (per 1,000 population)	711	14.4	800	16.2	-11.1%	
Total Detections (% rate)	460	64.7%	511	63.9%	64.7%	
Autocrime per (1,000 population)	136	2.8	127	2.6	7.1%	
Total Detections (% rate)	22	16.2%	20	15.7%	16.2%	
Llanelli		April-February YTD		Last Year		Indicator
CRIME	Performance	Indicator	Performance	Indicator	Change & Detection	
Total Crime Recorded (per 1,000 population)	5125	84.7	5844	96.6	-12.3%	
Total Detections (% rate)	2066	40.3%	2105	36.0%	40.3%	
Burglary Dwelling (per 1,000 households)	206	7.9	255	9.8	-19.2%	
Total Detections (% rate)	48	23.3%	66	25.9%	23.3%	
Total Violent Crime (per 1,000 population)	1379	22.8	1468	24.3	-6.1%	
Total Detections (% rate)	833	60.4%	851	58.0%	60.4%	
Autocrime per (1,000 population)	400	6.6	558	9.2	-28.3%	
Total Detections (% rate)	57	14.3%	123	22.0%	14.3%	
Towy/Gwendraeth		April-February YTD		Last Year		Indicator
CRIME	Performance	Indicator	Performance	Indicator	Change & Detection	
Total Crime Recorded (per 1,000 population)	1432	47.3	1497	49.5	-4.3%	
Total Detections (% rate)	608	42.5%	587	39.2%	42.5%	
Burglary Dwelling (per 1,000 households)	50	4.0	65	5.2	-23.1%	
Total Detections (% rate)	16	32.0%	18	27.7%	32.0%	
Total Violent Crime (per 1,000 population)	360	11.9	349	11.5	3.2%	
Total Detections (% rate)	223	61.9%	213	61.0%	61.9%	
Autocrime per (1,000 population)	107	3.5	136	4.5	-21.3%	
Total Detections (% rate)	25	23.4%	19	14.0%	23.4%	

Target Contribution Summary - Ceredigion

DYFED-POWYS POLICE

GREEN/RED indicates current performance **consistent** or **not consistent** with force target reduction & detection rate

CEREDIGION		April-February YTD		Last Year		Indicator
CRIME	Performance	Indicator	Performance	Indicator	Change & Detection	
Total Crime Recorded (per 1,000 population)	3885	51.8	4112	54.9	-5.5%	
Total Detections (% rate)	1881	48.4%	1785	43.4%	48.4%	
Burglary Dwelling (per 1,000 households)	88	2.8	108	3.5	-18.5%	
Total Detections (% rate)	17	19.3%	29	26.9%	19.3%	
Total Violent Crime (per 1,000 population)	980	13.1	1253	16.7	-21.8%	
Total Detections (% rate)	685	69.9%	684	54.6%	69.9%	
Autocrime per (1,000 population)	191	2.5	200	2.7	-4.5%	
Total Detections (% rate)	37	19.4%	41	20.5%	19.4%	
Ceredigion North		April-February YTD		Last Year		Indicator
CRIME	Performance	Indicator	Performance	Indicator	Change & Detection	
Total Crime Recorded (per 1,000 population)	2113	66.4	2140	67.3	-1.3%	
Total Detections (% rate)	1026	48.6%	1001	46.8%	48.6%	
Burglary Dwelling (per 1,000 households)	53	4.2	32	2.6	65.6%	
Total Detections (% rate)	11	20.8%	10	31.3%	20.8%	
Total Violent Crime (per 1,000 population)	520	16.4	662	20.8	-21.5%	
Total Detections (% rate)	362	69.6%	372	56.2%	69.6%	
Autocrime per (1,000 population)	92	2.9	88	2.8	4.5%	
Total Detections (% rate)	17	18.5%	15	17.0%	18.5%	
Ceredigion South		April-February YTD		Last Year		Indicator
CRIME	Performance	Indicator	Performance	Indicator	Change & Detection	
Total Crime Recorded (per 1,000 population)	1772	41.3	1972	45.9	-10.1%	
Total Detections (% rate)	855	48.3%	784	39.8%	48.3%	
Burglary Dwelling (per 1,000 households)	35	1.9	76	4.1	-53.9%	
Total Detections (% rate)	6	17.1%	19	25.0%	17.1%	
Total Violent Crime (per 1,000 population)	460	10.7	591	13.8	-22.2%	
Total Detections (% rate)	323	70.2%	312	52.8%	70.2%	
Autocrime per (1,000 population)	99	2.3	112	2.6	-11.6%	
Total Detections (% rate)	20	20.2%	26	23.2%	20.2%	

Ceredigion South is an area used for comparison purposes only. It incorporates the three section areas of Lampeter/Aberaeron and Cardigan. Details on these three discrete areas are also included here for information.

Aberaeron		April-February YTD		Last Year		Indicator
CRIME	Performance	Indicator	Performance	Indicator	Change & Detection	
Total Crime Recorded (per 1,000 population)	376	29.7	487	38.4	-22.8%	
Total Detections (% rate)	162	43.1%	178	36.6%	43.1%	
Burglary Dwelling (per 1,000 households)	4	0.7	22	4.0	-81.8%	
Total Detections (% rate)	2	50.0%	3	13.6%	50.0%	
Total Violent Crime (per 1,000 population)	99	7.8	124	9.8	-20.2%	
Total Detections (% rate)	66	66.7%	67	54.0%	66.7%	
Autocrime per (1,000 population)	25	2.0	20	1.6	25.0%	
Total Detections (% rate)	3	12.0%	5	25.0%	12.0%	
Cardigan		April-February YTD		Last Year		Indicator
CRIME	Performance	Indicator	Performance	Indicator	Change & Detection	
Total Crime Recorded (per 1,000 population)	911	48.3	1007	53.4	-9.5%	
Total Detections (% rate)	422	46.3%	412	40.9%	46.3%	
Burglary Dwelling (per 1,000 households)	25	3.0	34	4.1	-26.5%	
Total Detections (% rate)	3	12.0%	12	35.3%	12.0%	
Total Violent Crime (per 1,000 population)	239	12.7	316	16.7	-24.4%	
Total Detections (% rate)	167	69.9%	167	52.8%	69.9%	
Autocrime per (1,000 population)	39	2.1	53	2.8	-26.4%	
Total Detections (% rate)	6	15.4%	12	22.6%	15.4%	
Lampeter		April-February YTD		Last Year		Indicator
CRIME	Performance	Indicator	Performance	Indicator	Change & Detection	
Total Crime Recorded (per 1,000 population)	485	41.8	478	41.2	1.5%	
Total Detections (% rate)	271	55.9%	194	40.6%	55.9%	
Burglary Dwelling (per 1,000 households)	6	1.3	20	4.2	-70.0%	
Total Detections (% rate)	1	16.7%	4	20.0%	16.7%	
Total Violent Crime (per 1,000 population)	122	10.5	151	13.0	-19.2%	
Total Detections (% rate)	90	73.8%	78	51.7%	73.8%	
Autocrime per (1,000 population)	35	3.0	39	3.4	-10.3%	
Total Detections (% rate)	11	31.4%	9	23.1%	31.4%	

Target Contribution Summary - Pembrokeshire

DYFED-POWYS POLICE

GREEN/RED indicates current performance **consistent** or **not consistent** with force target reduction & total detection rate

PEMBROKESHIRE		April-February YTD		Last Year		Indicator
CRIME		Performance	Indicator	Performance	Indicator	Change & Detection
Total Crime Recorded (per 1,000 population)	7182	62.9	7634	66.9		-5.9%
Total Detections (% rate)	3228	44.9%	3315	43.4%		44.9%
Burglary Dwelling (per 1,000 households)	162	3.4	233	4.8		-30.5%
Total Detections (% rate)	42	25.9%	57	24.5%		25.9%
Total Violent Crime (per 1,000 population)	1866	16.3	2102	18.4		-11.2%
Total Detections (% rate)	1244	66.7%	1382	65.7%		66.7%
Autocrime per (1,000 population)	423	3.7	587	5.1		-27.9%
Total Detections (% rate)	86	20.3%	117	19.9%		20.3%
Fishguard		April-February YTD		Last Year		Indicator
CRIME		Performance	Indicator	Performance	Indicator	Change & Detection
Total Crime Recorded (per 1,000 population)	847	32.0	879	33.2		-3.6%
Total Detections (% rate)	380	44.9%	431	49.0%		44.9%
Burglary Dwelling (per 1,000 households)	15	1.3	30	2.7		-50.0%
Total Detections (% rate)	5	33.3%	11	36.7%		33.3%
Total Violent Crime (per 1,000 population)	220	8.3	211	8.0		4.3%
Total Detections (% rate)	148	67.3%	165	78.2%		67.3%
Autocrime per (1,000 population)	45	1.7	79	3.0		-43.0%
Total Detections (% rate)	8	17.8%	23	29.1%		17.8%
Haverfordwest		April-February YTD		Last Year		Indicator
CRIME		Performance	Indicator	Performance	Indicator	Change & Detection
Total Crime Recorded (per 1,000 population)	1843	92.2	2017	100.9		-8.6%
Total Detections (% rate)	895	48.6%	943	46.8%		48.6%
Burglary Dwelling (per 1,000 households)	50	5.9	71	8.4		-29.6%
Total Detections (% rate)	12	24.0%	13	18.3%		24.0%
Total Violent Crime (per 1,000 population)	569	28.5	604	30.2		-5.8%
Total Detections (% rate)	358	62.9%	387	64.1%		62.9%
Autocrime per (1,000 population)	63	3.2	130	6.5		-51.5%
Total Detections (% rate)	12	19.0%	22	16.9%		19.0%
Milford Haven		April-February YTD		Last Year		Indicator
CRIME		Performance	Indicator	Performance	Indicator	Change & Detection
Total Crime Recorded (per 1,000 population)	1404	57.5	1572	64.4		-10.7%
Total Detections (% rate)	657	46.8%	729	46.4%		46.8%
Burglary Dwelling (per 1,000 households)	30	2.9	35	3.4		-14.3%
Total Detections (% rate)	12	40.0%	14	40.0%		40.0%
Total Violent Crime (per 1,000 population)	372	15.2	427	17.5		-12.9%
Total Detections (% rate)	259	69.6%	307	71.9%		69.6%
Autocrime per (1,000 population)	72	3.0	103	4.2		-30.1%
Total Detections (% rate)	22	30.6%	37	35.9%		30.6%
Pembroke Dock		April-February YTD		Last Year		Indicator
CRIME		Performance	Indicator	Performance	Indicator	Change & Detection
Total Crime Recorded (per 1,000 population)	1836	96.1	1722	90.1		6.6%
Total Detections (% rate)	791	43.1%	644	37.4%		43.1%
Burglary Dwelling (per 1,000 households)	41	5.1	47	5.8		-12.8%
Total Detections (% rate)	7	17.1%	7	14.9%		17.1%
Total Violent Crime (per 1,000 population)	427	22.3	473	24.8		-9.7%
Total Detections (% rate)	278	65.1%	291	61.5%		65.1%
Autocrime per (1,000 population)	115	6.0	174	9.1		-33.9%
Total Detections (% rate)	11	9.6%	14	8.0%		9.6%
Tenby		April-February YTD		Last Year		Indicator
CRIME		Performance	Indicator	Performance	Indicator	Change & Detection
Total Crime Recorded (per 1,000 population)	1252	51.8	1444	59.8		-13.3%
Total Detections (% rate)	505	40.3%	568	39.3%		40.3%
Burglary Dwelling (per 1,000 households)	26	2.5	49	4.8		-46.9%
Total Detections (% rate)	7	26.9%	12	24.5%		26.9%
Total Violent Crime (per 1,000 population)	278	11.5	387	16.0		-28.2%
Total Detections (% rate)	201	72.3%	232	59.9%		72.3%
Autocrime per (1,000 population)	128	5.3	101	4.2		26.7%
Total Detections (% rate)	33	25.8%	21	20.8%		25.8%

Target Contribution Summary - Powys

DYFED-POWYS POLICE

GREEN/RED indicates current performance **consistent** or **not consistent** with force target reduction & detection rate

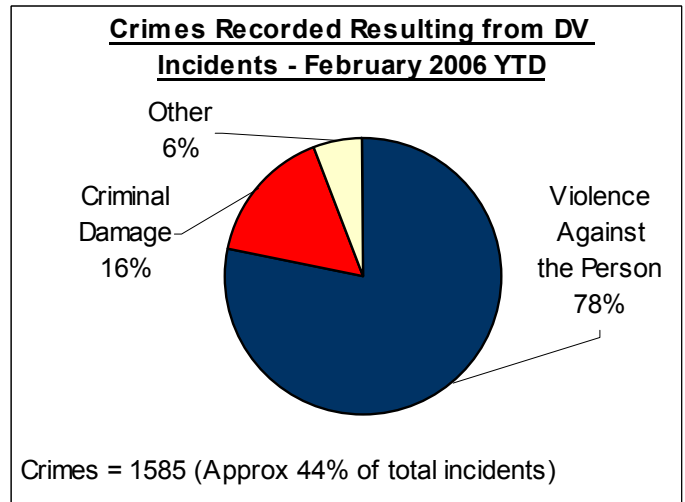
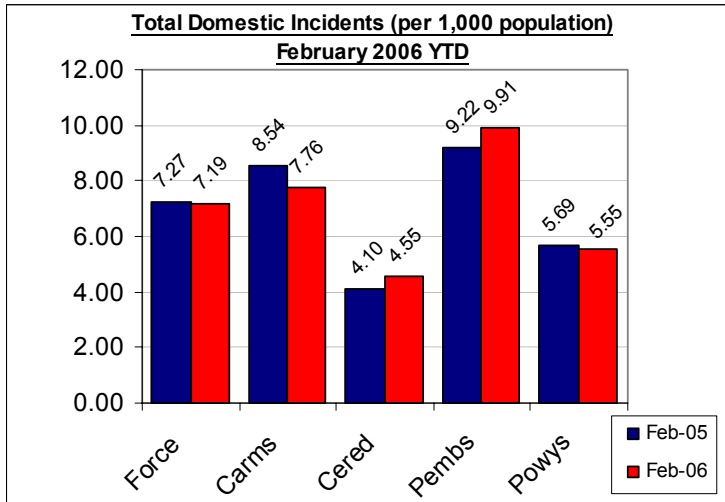
POWYS		April-February YTD		Last Year		Indicator
CRIME	Performance	Indicator	Performance	Indicator	Change & Detection	
Total Crime Recorded (per 1,000 population)	6596	52.2	6538	51.7	0.9%	
Total Detections (% rate)	3070	46.5%	2870	43.9%	46.5%	
Burglary Dwelling (per 1,000 households)	161	3.0	212	3.9	-24.1%	
Total Detections (% rate)	35	21.7%	39	18.4%	21.7%	
Total Violent Crime (per 1,000 population)	2059	16.3	1848	14.6	11.4%	
Total Detections (% rate)	1413	68.6%	1225	66.3%	68.6%	
Autocrime per (1,000 population)	376	3.0	451	3.6	-16.6%	
Total Detections (% rate)	73	19.4%	109	24.2%	19.4%	
Brecon		April-February YTD		Last Year		Indicator
CRIME	Performance	Indicator	Performance	Indicator	Change & Detection	
Total Crime Recorded (per 1,000 population)	1703	66.6	1466	57.3	16.2%	
Total Detections (% rate)	759	44.6%	636	43.4%	44.6%	
Burglary Dwelling (per 1,000 households)	22	2.1	35	3.3	-37.1%	
Total Detections (% rate)	2	9.1%	8	22.9%	9.1%	
Total Violent Crime (per 1,000 population)	501	19.6	406	15.9	23.4%	
Total Detections (% rate)	370	73.9%	276	68.0%	73.9%	
Autocrime per (1,000 population)	107	4.2	115	4.5	-7.0%	
Total Detections (% rate)	13	12.1%	23	20.0%	12.1%	
Llandrindod Wells		April-February YTD		Last Year		Indicator
CRIME	Performance	Indicator	Performance	Indicator	Change & Detection	
Total Crime Recorded (per 1,000 population)	1204	42.7	1295	45.9	-7.0%	
Total Detections (% rate)	575	47.8%	617	47.6%	47.8%	
Burglary Dwelling (per 1,000 households)	34	2.8	55	4.5	-38.2%	
Total Detections (% rate)	10	29.4%	10	18.2%	29.4%	
Total Violent Crime (per 1,000 population)	396	14.0	387	13.7	2.3%	
Total Detections (% rate)	301	76.0%	257	66.4%	76.0%	
Autocrime per (1,000 population)	55	1.9	75	2.7	-26.7%	
Total Detections (% rate)	14	25.5%	13	17.3%	25.5%	
Newtown		April-February YTD		Last Year		Indicator
CRIME	Performance	Indicator	Performance	Indicator	Change & Detection	
Total Crime Recorded (per 1,000 population)	2070	58.9	1918	54.6	7.9%	
Total Detections (% rate)	946	45.7%	747	38.9%	45.7%	
Burglary Dwelling (per 1,000 households)	72	4.8	87	5.8	-17.2%	
Total Detections (% rate)	17	23.6%	11	12.6%	23.6%	
Total Violent Crime (per 1,000 population)	680	19.4	543	15.5	25.2%	
Total Detections (% rate)	414	60.9%	332	61.1%	60.9%	
Autocrime per (1,000 population)	99	2.8	101	2.9	-2.0%	
Total Detections (% rate)	20	20.2%	27	26.7%	20.2%	
Welshpool		April-February YTD		Last Year		Indicator
CRIME	Performance	Indicator	Performance	Indicator	Change & Detection	
Total Crime Recorded (per 1,000 population)	1106	43.3	1239	48.5	-10.7%	
Total Detections (% rate)	548	49.5%	553	44.6%	49.5%	
Burglary Dwelling (per 1,000 households)	24	2.2	25	2.3	-4.0%	
Total Detections (% rate)	6	25.0%	6	24.0%	25.0%	
Total Violent Crime (per 1,000 population)	319	12.5	322	12.6	-0.9%	
Total Detections (% rate)	219	68.7%	226	70.2%	68.7%	
Autocrime per (1,000 population)	63	2.5	95	3.7	-33.7%	
Total Detections (% rate)	19	30.2%	30	31.6%	30.2%	
Ystradgynlais		April-February YTD		Last Year		Indicator
CRIME	Performance	Indicator	Performance	Indicator	Change & Detection	
Total Crime Recorded (per 1,000 population)	513	43.2	620	52.2	-17.3%	
Total Detections (% rate)	242	47.2%	317	51.1%	47.2%	
Burglary Dwelling (per 1,000 households)	9	1.8	10	2.0	-10.0%	
Total Detections (% rate)	0	0.0%	4	40.0%	0.0%	
Total Violent Crime (per 1,000 population)	163	13.7	190	16.0	-14.2%	
Total Detections (% rate)	109	66.9%	134	70.5%	66.9%	
Autocrime per (1,000 population)	52	4.4	65	5.5	-20.0%	
Total Detections (% rate)	7	13.5%	16	24.6%	13.5%	

Domestic Incidents

DYFED POWYS POLICE

SPI 8A TARGET - 80% OF INCIDENTS (WITH A POWER OF ARREST) LEADING TO ARREST
LOCAL TARGET - 30% OF TOTAL INCIDENTS INVOLVING REPEAT VICTIMS

Please note figures provided here are provisional only. For the latest detailed information please contact your local Public Protection Unit (PPU) for further details.



Section & Divisional Summary – February 2006 YTD

Section	Incidents Total Incidents	POA Arrests (Apr-Dec 05 only)			Total Arrest Rate		Sanction Detections			Repeat Victims % Repeats (12mths data)	Apr-Feb 2005 (SPLY)	
		Apr-Dec Power Of Arrest	Apr-Dec Arrests where POA	% POA	Arrests	Total Arrest Rate	Crimes	Sanction Detections	% Sanction Detection		Total Incidents	Annual % Change
Ammanford (AA)	174	61	45	73.8%	54	31.0%	72	40	55.6%	14.1%	240	-27.5%
Carmarthen (AC)	275	115	99	86.1%	107	38.9%	118	54	45.8%	15.2%	298	-7.7%
Llanelli (AL)	718	300	235	78.3%	258	35.9%	337	171	50.7%	23.9%	743	-3.4%
Towy Gwendraeth (AT)	211	87	73	83.9%	80	37.9%	76	46	60.5%	19.6%	236	-10.6%
Carmarthenshire	1378	563	452	80.3%	499	36.2%	603	311	51.6%	20.3%	1517	-9.2%
Aberystwyth (BA)	197	88	83	94.3%	87	44.2%	80	47	58.8%	17.5%	161	22.4%
Aberaeron (BB)	28	15	12	80.0%	13	46.4%	15	7	46.7%	21.2%	39	-28.2%
Cardigan (BC)	85	38	30	78.9%	33	38.8%	45	19	42.2%	19.8%	96	-11.5%
Lampeter (BL)	45	20	19	95.0%	23	51.1%	25	14	56.0%	14.6%	24	87.5%
Ceredigion	355	161	144	89.4%	156	43.9%	165	87	52.7%	18.0%	320	10.9%
Fishguard (CF)	168	63	56	88.9%	64	38.1%	74	40	54.1%	28.4%	126	33.3%
Haverfordwest (CH)	262	111	83	74.8%	88	33.6%	108	40	37.0%	32.7%	263	-0.4%
Milford Haven (CM)	274	97	75	77.3%	83	30.3%	98	49	50.0%	33.0%	231	18.6%
Pembroke Dock (CP)	317	134	106	79.1%	120	37.9%	112	52	46.4%	28.4%	318	-0.3%
Tenby (CT)	141	64	55	85.9%	58	41.1%	59	31	52.5%	23.9%	143	-1.4%
Pembrokeshire	1162	469	375	80.0%	413	35.5%	451	212	47.0%	29.9%	1081	7.5%
Brecon (DB)	152	63	63	100.0%	70	46.1%	71	33	46.5%	21.9%	168	-9.5%
Llandrindod Wells (DL)	122	56	53	94.6%	54	44.3%	63	36	57.1%	27.6%	133	-8.3%
Newtown (DN)	239	98	92	93.9%	98	41.0%	120	60	50.0%	21.7%	227	5.3%
Welshpool (DW)	119	41	39	95.1%	48	40.3%	68	39	57.4%	23.4%	123	-3.3%
Ystradgynlais (DY)	94	37	35	94.6%	38	40.4%	44	22	50.0%	20.2%	93	1.1%
Powys	726	295	282	95.6%	308	42.4%	366	190	51.9%	22.8%	744	-2.4%
Force	3621	1488	1253	84.2%	1376	38.0%	1585	800	50.5%	23.6%	3662	-1.1%

The introduction of the Serious Organised Crime and Police Act 2005 (SOCPA) on 01/01/06 has resulted in the withdrawal of the term 'power of arrest'. As a consequence of this it has ceased to be a discrete measure of performance with respect to domestic incidents. The performance illustrated here for Apr-Dec 2005 will therefore remain the end of year performance for 2005/06.

Source: LCS Recorded Domestic Incident Details (extracted 06/03/06)
 NB – Repeat Victims performance based on 12-months incident data and not fiscal year-to-date

User Satisfaction

CITIZEN FOCUS PERFORMANCE ASSESSMENT DOMAIN

TARGET 2005/06

These measures constitute the citizen focus domain in the police performance assessment framework. All victims of crimes (domestic burglary, violent crime and vehicle crime only) or those involved in road traffic collisions are surveyed within a short period of coming into contact with the force to gain their views on the service they received.

For performance assessment purposes, these measurements of user satisfaction are grouped into five main themes, which are:

- SPI 1a – Satisfaction with making contact with the police: 'Ease of Contact'
- SPI 1b – Satisfaction with the action taken by the police: 'Actions'
- SPI 1c – Satisfaction with being kept informed of progress: 'Follow-Up'
- SPI 1d – Satisfaction with their treatment by staff: 'Treatment'
- SPI 1e – Satisfaction with the overall service provided: 'Whole Experience'

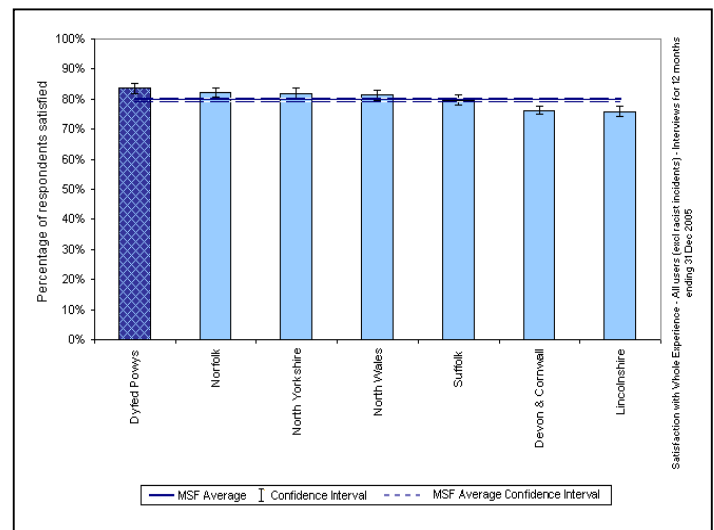
Force User Satisfaction – Year Ending December 2005

Comparative User Satisfaction

Satisfaction with...	DPP Force	MSF Average	Difference
Ease of Contact	91.8%	89.6%	2.2%
Actions	83.0%	77.3%	5.7%
Follow-up	70.3%	63.2%	7.1%
Treatment	91.1%	89.9%	1.2%
Whole experience	83.6%	79.8%	3.8%

Source: Home Office / Iquanta, March 2006

MSF – Comparative Force Performance - Whole Experience



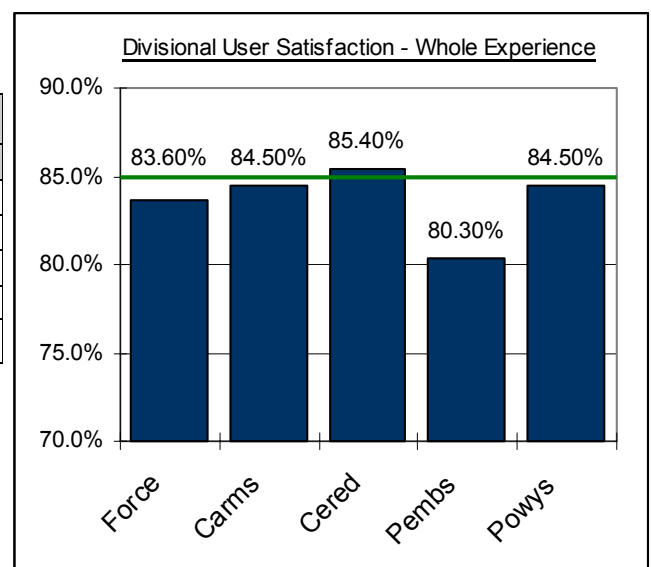
Source: Home Office / Iquanta, March 2006

Divisional User Satisfaction – Year Ending September 2005 (Jan 05 – Dec 05)

BCU user Satisfaction Summary

Year Ending Sept 2005	% Satisfied (Very, Completely and Fairly Satisfied)					Target
	Force	Carms	Cered	Pembs	Powys	
Ease of Contact	91.8%	92.0%	94.8%	89.7%	92.0%	92%
Actions	83.0%	84.3%	83.0%	80.5%	83.7%	84%
Follow-up	70.3%	71.8%	72.6%	67.6%	70.1%	70%
Treatment	91.1%	91.1%	94.0%	89.4%	91.3%	92%
Whole experience	83.6%	84.5%	85.4%	80.3%	84.5%	85%

Source: Home Office / Iquanta, March 2006

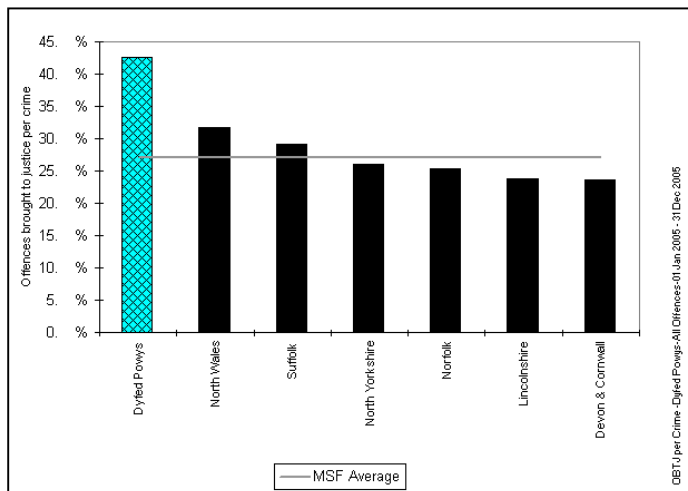
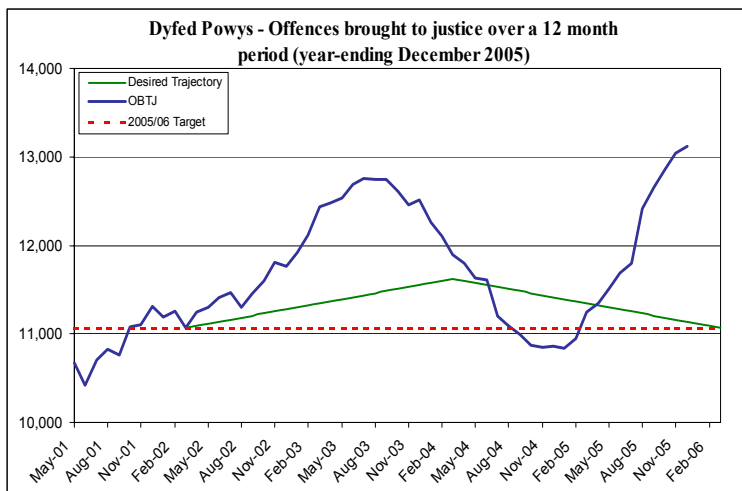


Additional comparative data is available on a quarterly basis. For further information on this or Iquanta contact Corporate Services (ext 6654).

Narrowing the Justice Gap - OFFENCES BROUGHT TO JUSTICE & SANCTION DETECTIONS

TARGET 2005/06 : 11,068 total OBTJ (Offences Brought to Justice)

Total Offences Brought to Justice (OBTJ) – Force & MSF Comparisons



Offences brought to justice – 12 monthly data	TIC	PND	Formal Warnings	Cautions	Convictions	OBTJ
Baseline: Apr 01 – Mar 02	420	-	-	3,698	6,900	11,068
Latest Annual Data : October 04 – September 05	485	722	1,206	4,461	6,239	13,113
Change	+15%	-	-	+21%	-10%	+19%
2005/06 Force Target (0%- 11,068 OBTJ)	YES	n/a	YES	YES	NO	YES

Divisional Contribution Toward OBTJ Volumes – Approximate Latest

Please note this data is provided as a guide only - it is provided here for information.

Approx OBTJ YTD	Dec-05	Target**	Diff from Target
Carmarthenshire	3565	2981	19.6%
Ceredigion	1487	1302	14.2%
Pembrokeshire	2517	2206	14.1%
Powys	2509	1812	38.4%
Force	10078	8301	21.4%

Target Pro-Rata Based on 6 months performance

** - This is the target profile required to attain the end of year target of 11,068 OBTJ. (The divisional target breakdown is based on mirroring 2004/05 contribution toward total force sanction detections).

Sanction Detection Volume Performance YTD – Current Clear-Up Breakdown (Annual % Change)

The current volume of sanction detections (February 06 YTD) is up 16% on the same period last year to stand at 10,932 (up 1,542 from 9,390*).

Area – February YTD	Charged	Summons	Cautioned	TIC	PND	F. Warning for Cannabis*	Total Sanction Dets
Carmarthenshire	1871 (+8%)	62 (-10%)	1229 (+46%)	132 (-36%)	241 (106 SPLY)	367 (-2%)	3902 (+17%)
Ceredigion	768 (+7%)	61 (+20%)	576 (+16%)	46 (+18%)	49 (23 SPLY)	109 (-17%)	1609 (+10%)
Pembrokeshire	1156 (+2%)	62 (-6%)	1061 (+16%)	160 (62 SPLY)	163 (93 SPLY)	149 (-14%)	2751 (+13%)
Powys	1131 (-1%)	114 (+8%)	945 (+33%)	103 (+56%)	242 (53 SPLY)	135 (+73%)	2670 (+24%)
Force	4926 (+4%)	299 (+2%)	3811 (+29%)	441 (+19%)	695 (275 SPLY)	760 (+1%)	10932 (+16%)

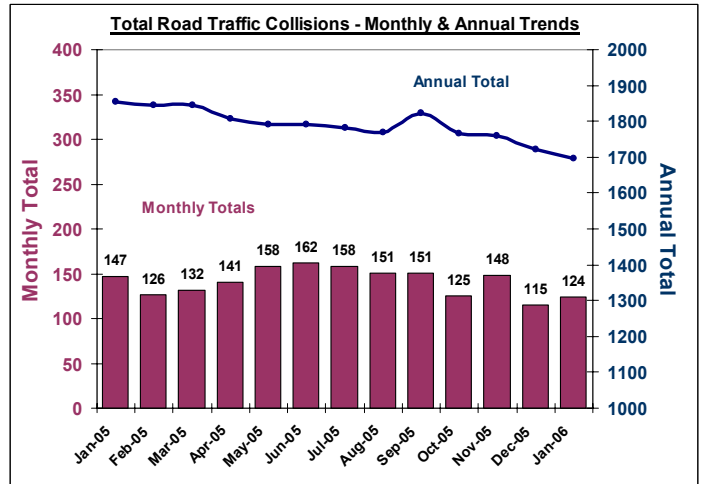
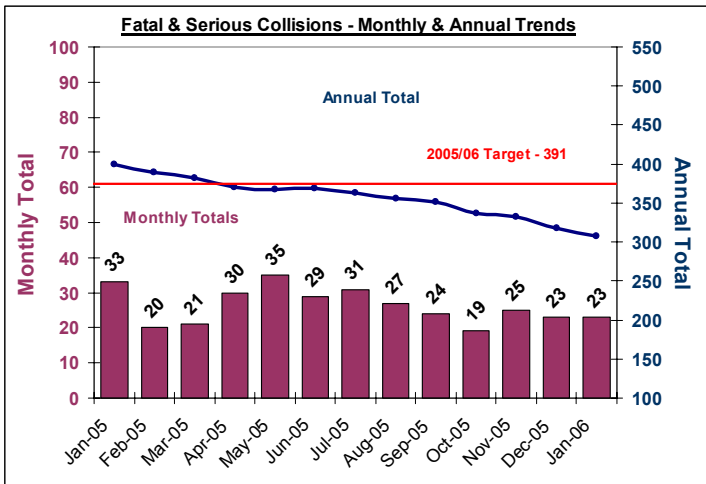
* - SPLY Data Approximate

Road Traffic Collisions

November Monthly Data Latest available

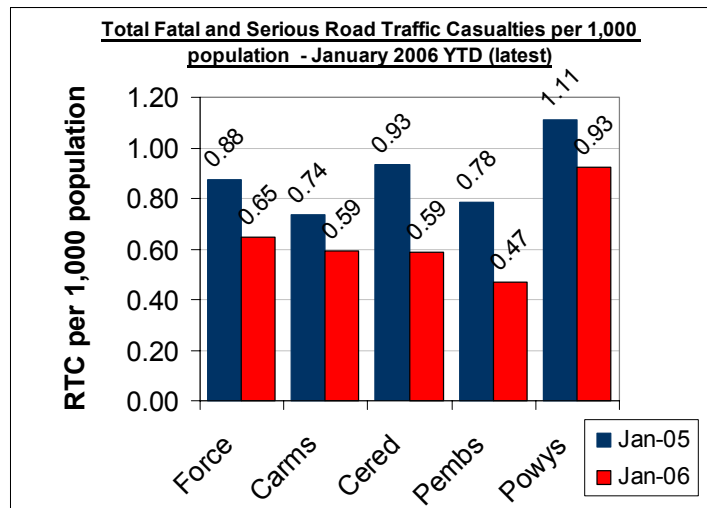
TARGET 2005/06 : 391 FATAL AND SERIOUS COLLISIONS (0.8 PER 1,000 POPULATION) – USING 2004 MID -YEAR ESTIMATES

Road Traffic Collisions – Monthly & Annual Trends (January 06 - latest data)



Performance YTD (January 2006 YTD - latest)	FORCE	Carms	Cered	Pembs	Powys
Fatal Road Collisions YTD	38	16	2	4	16
Serious & Fatal Road Collisions YTD	266	82	39	46	99
Indicator - Per 1,000 population	0.53	0.46	0.50	0.39	0.76
On-Target (0.8 end of year – 0.67 pro-rata)	YES	YES	YES	YES	NO
Fatal (SPLY)	40	12	6	5	17
Serious & Fatal (SPLY)	356	107	63	75	111

Road Traffic Casualties – 2010 Target Progress



January 2006 YTD (latest)	Force	Carms	Cered	Pembs	Powys
Number of people killed or seriously injured casualties	327	105	46	55	121
At 2010 Target Level*	YES	YES	YES	YES	YES
Number of Children (<=15 yrs) killed or seriously injured	17	9	4	1	3
At 2010 Target Level*	YES	YES	YES	YES	YES
Number of persons with slight injuries	1842	683	298	410	451
At 2010 Target Level*	NO	NO	NO	NO	NO

* 2010 Targets Established with Roads Policing Strategy, Operations Dept & National Road Policing Targets. Progress towards Pro-Rata year-end 2010 target illustrated here

Source: MAAP RTC Database 08/03/06

PPAF Statutory Performance Indicator Summary

Reported Quarterly

HOME OFFICE POLICE PERFORMANCE ASSESSMENT FRAMEWORK MEASURES

This Data is Updated Quarterly – Latest: April – December 2005 (except where stated).

Activity	SPI Number	Indicator Description	Apr-Dec 2004 Performance	Apr-Dec 2005 Performance	Change	2005/06 End of Year Target
User Satisfaction Measures	1a	Satisfaction of victims of domestic burglary, violent crime, vehicle crime and road traffic collisions with respect to - a) making contact with the Police	91%	91.0%	0.0%	92%
	1b	b) action taken by the Police	83%	83.8%	0.8%	84%
	1c	c) Being kept informed of progress	71%	71.7%	0.7%	70%
	1d	d) Their treatment by staff	91%	91.2%	0.2%	92%
	1e	e) the overall service provided	84%	84.0%	0.0%	85%
Confidence	2a^	Using the BCS, the % of people who think their local police do a good job	NEW	NEW	-	NEW
Fairness and Equality Measures	3a	Satisfaction of victims of racist incidents with respect to the overall service provided	82.0%	88.2%	6.2%	85%
	3b	From SPI 1(e), comparison of satisfaction for white users and users from visible minority ethnic groups with respect to the overall service provided.	White - 84.2% Ethnic - 70.0%	White - 84.0% Ethnic - 83.3%	White -1.9% Ethnic +1.5%	White - 85% Ethnic - 72%
	3c(i)	(i) % of PACE stop/searches which lead to arrest by ethnicity	White - 17.2% Ethnic - 27.2%	White - 14.3% Ethnic - 15.5%	White -2.9% Ethnic -11.7%	White - 20% Ethnic - 20%
	3d	Comparison of percentage detected of violence against the person offences by ethnicity of the victim (sanction detections)	White - 59.9% Ethnic - 63.7%	White - 42.1% Ethnic - 37.6%	White -18% Ethnic -26%	White - 31% Ethnic - 31%
	3e	Proportion of police recruits (ethnic) compared to the proportion of people from minority ethnic groups in the economically active population.	(No ethnic recruits)	(No ethnic recruits)	-	NEW
	3f	Ratio of officers from minority ethnic groups resigning to all officer resignations	00:05	00:05	NEW	NEW
	3g	% of female police officers compared to overall Force strength.	18.9%	20.1%	1.2%	19%
Measures of Crime Levels	4a^	Using the British Crime Survey (a) the risk of personal crime; and	4%	8%	4.0%	8%
	4b^	(b) the risk of household crime.	12%	11%	-1.0%	11%
	5a	(a) Domestic Burglaries per 1,000 households.	4.07 (839 crimes)	3.05 (620 crimes)	-1.02 (-219 crimes)	5.06 (1042 crimes)
	5b	(b) Violent crime per 1,000 population.	13.86 (6983 crimes)	12.88 (6489 crimes)	-0.98 (494 crimes)	17.60 (8593 crimes)
	5c	(c) Robberies per 1,000 population.	0.063 (32 crimes)	0.062 (31 crimes)	-0.001 (-1 crime)	0.1 (48 crimes)
	5d	(d) Vehicle crime per 1,000 population.	3.69 (1861 crimes)	2.91 (1464 crimes)	-0.78 (-397 crimes)	4.77 (2331 crimes)
	5e	(e) Life threatening crime and gun crime per 1,000 population.	0.18 (91 crimes)	0.22 (111 crimes)	+0.04 (+20 crimes)	0.28
Offences Brought to Justice Measures (OBTJ)	6a	Number of notifiable/recorded offences resulting in convictions, caution or taken into consideration at court	4,481	5,598	+1117 OBTJ (+24.9%)	11,068
	6b	% of notifiable/recorded offences resulting in convictions, caution or taken into consideration at court	30.4%	40.1%	9.7%	NEW
Detection Measure	7a	% of notifiable/recorded offences resulting in charge, summons, caution or taken into consideration at court ('sanction detections')	30.1%	37.9%	7.8%	31%
Domestic Violence Measures	8a	Percentage of domestic violence incidents with a power of arrest where an arrest was made relating to the incident.	80.6% (906 arrests)	84.5% (1119 arrests)	+213 arrests	80%
Traffic Measures	9a(i)	(i) Number of people killed in under 30 days or seriously injured in road traffic collisions	323 fatal or serious casualties	299 fatal or serious casualties	-24 casualties	391 fatal or serious casualties
	9a(ii)	(ii) Number of persons killed or seriously injured in road traffic collisions per 100million vehicle kilometres travelled.	6.58	6.09	-0.49	8.13
Quality of life Measures	10a^	Using the British Crime Survey a) fear of crime	11%	9%	-2%	10%
	10b^	Perceptions of anti-social behaviour; and	NEW	NEW	NEW	NEW
	10c^	Perceptions of local drug use / drug dealing	NEW	NEW	NEW	NEW
Resource Use Measures	11a^	Percentage of police officer time spent on frontline duties	65.4%	-	-	68.5%
	12a	Delivery of cashable and non-cashable efficiency targets	NEW	NEW	NEW	NEW
	13a*	Average number of working hours lost due to sickness per police officer.	71.0 hours	60.5 hours	-15%	92.8 hours
	13b*	Average number of working hours lost due to sickness by police staff.	69.3 hours	50.5 hours	-27%	80.7 hours

* April-Sept Data : Latest Available

*** - April & May Data only Latest Available

^ - End of Year Data 2004/05 : Latest Available