



Heddlu Dyfed-Powys Police

CRIME TRENDS UPDATE March 2006

Contents:

| | |
|--|----|
| Headline Statistics | 2 |
| Most Frequent Recorded Offences Profile | 3 |
| Recorded Crimes and Detection Rates | 4 |
| Domestic Burglaries and Detection Rates | 5 |
| Other Burglary and Detection Rates | 6 |
| Violent Crime and Detection Rates | 7 |
| Vehicle Crime and Detection Rates | 8 |
| Criminal Damage and Detection Rates | 9 |
| Drugs Statistics and Detection Rates | 10 |
| Section Level Sanction Detection Summary | 11 |
| Divisional Contribution to Targets | 12 |
| Domestic Incidents | 16 |
| User Satisfaction | 17 |
| Narrowing the Justice Gap | 18 |
| Road Traffic Collisions | 19 |
| Roads Policing Performance | 20 |
| PPAF Statutory Performance Indicator Summary | 21 |

Heddlu Dyfed Powys Police: Corporate Services

Recorded Crime:

- Total Recorded Crime is down by 7% (-2,225 crimes) compared to the same period last year (SPLY) to stand at 30,183 crimes. The monthly figure for March 2006 stands at 2,217, a fall of 15% (-410 offences) on the same month in 2005, but a 4% (+94 offences) increase on the preceding month February 2006.
- Recorded detection performance has a total detection rate for the force at 45% (13,713 total detections) compared with 42% the previous year. The volume of total detections has decreased by 2% (-342 detections). The sanction detection rate stands at 39% - this is consistent with the target rate of 31% (and compared with 33% recorded last year). The volume of sanction detections has increased by 1,433 or 14%.

Domestic Burglary:

- Total Domestic Burglary offences are down by 23% (-241 crimes) compared to the same period last year (SPLY) to stand at 801 crimes. The monthly figure for March 2006 stands at 62, a decrease of 13% (-9 offences) on the same month in 2005, and a 6% (-4 offences) decrease on the preceding month February 2006.
- Recorded detection performance remains consistent with last year, with the total detection rate for the force at 25% (197 detections) compared with 25% the previous year. The volume of total detections has decreased by 24% (-61) as a consequence of this substantial fall in offences. The sanction detection rate stands at 24% (up from 20% last year) with the volume of sanction detections falling by 11% (-23).

Violent Crimes:

- Total Violent crime remains down by 8% (-668 crimes) compared to the same period last year (SPLY) to stand at 8,191 crimes. The monthly figure for March 2006 stands at 551, a fall of 16% (-107 offences) on the same month in 2005, and a 4% (-21 offences) decrease on the preceding month February 2006.
- Recorded detection performance stands at a total detection rate for the force of 67% (5,491 detections) up from 64% last year. The volume of total detections has decreased by 4% (-207) over this period. Furthermore the sanction detection rate stands at 55% (compared with 40% last year) with the volume recorded up by 26% (+913 sanction detections).

Vehicle Crime:

- Total Vehicle crime is down by 20% (-462 crimes) compared to the same period last year (SPLY) to stand at 1,869 crimes. The monthly figure for March 2006 stands at 135, a fall of 28% (-52 offences) on the same month in 2005, and a 3% decrease (-4 offences) on the preceding month February 2006.
- Recorded total detection stands at 18% (316 detections) down from 21% the previous year. The volume of total detections has decreased by 32% (-154) as a consequence of this fall in recorded offences. The sanction detection rate stands at 17% (compared with 18% last year) with the volume down on the previous year (-108 sanction detections or 21%).

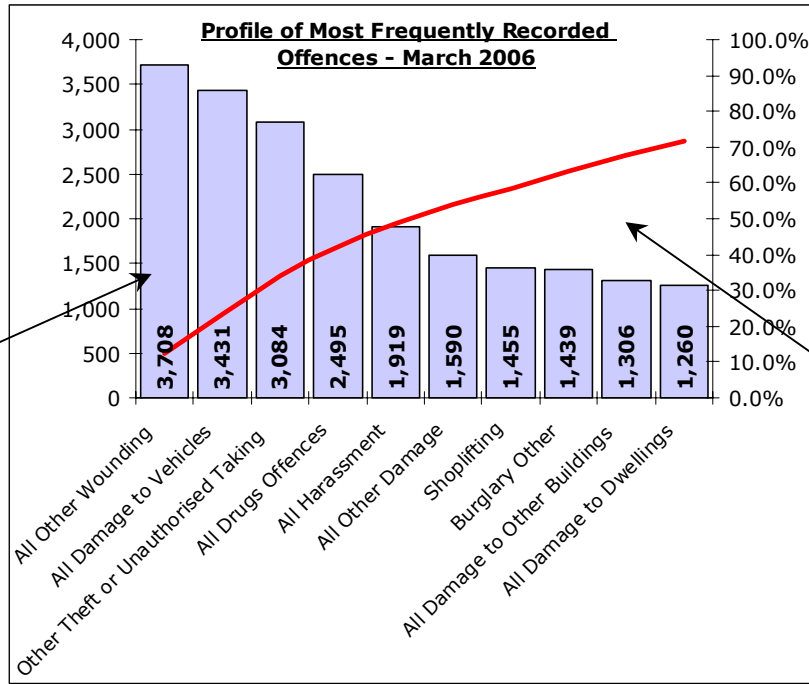
Criminal Damage:

- Total Criminal Damage has fallen by 3% (-264 crimes) compared to the same period last year (SPLY) to stand at 7,587 (excl Arson & Threat to Commit CD). The monthly figure for March 2006 stands at 541, a fall of 27% (-201 offences) on the same month in 2005, and a decrease of 8% (-44) on the previous month February 2006.
- Recorded detection performance stands at a total detection rate for the force of 27% (2,009 detections) up from 26% last year. The volume of total detections has decreased by 2% (-4) over this period. The sanction detection rate stands at 22% (compared with 17% last year) with the volume up a notable 23% over this period (+308 sanction detections).

Most Frequent Recorded Offences Profile

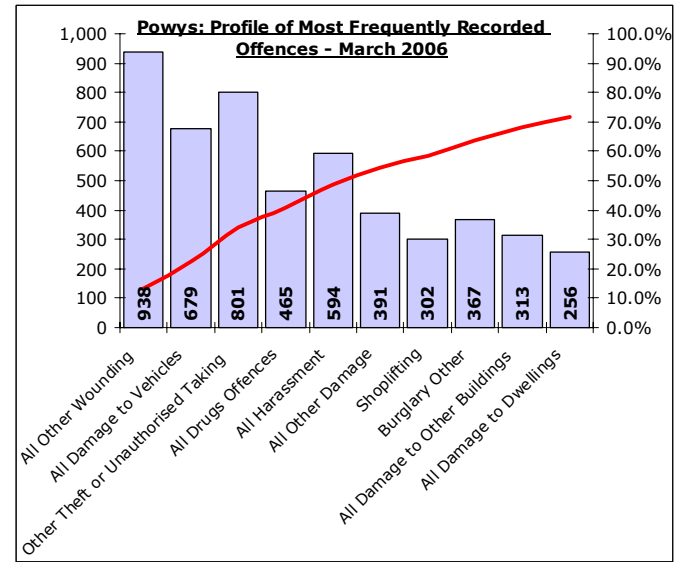
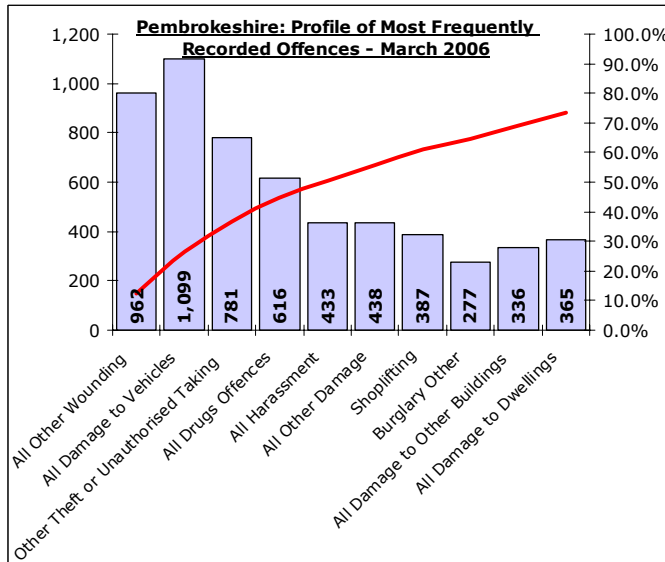
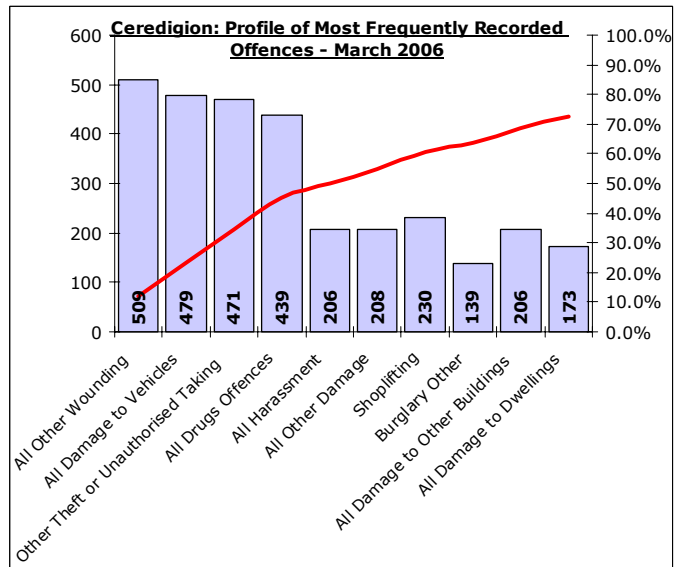
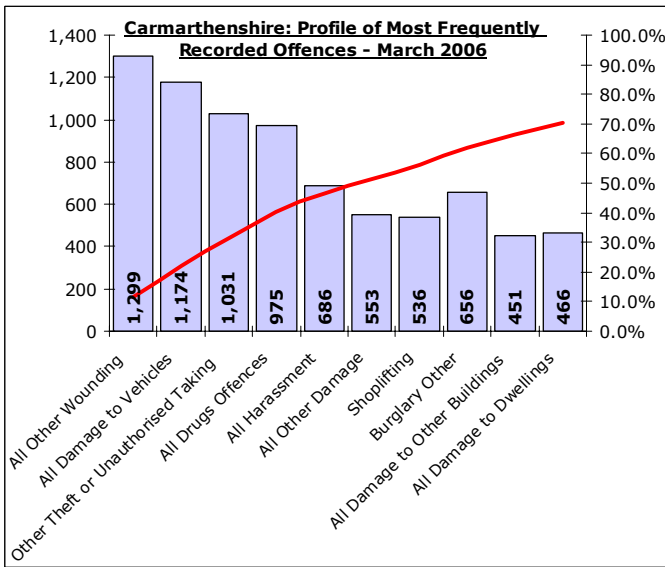
DYFED-POWYS POLICE

March 2006 YTD (Note : Divisional profiles are in the same sequence as forces' most frequent categories – for comparison)



Recorded offences in each category in order of volume.
(Note these can include a number of sub-categories)

The cumulative contribution of these offence categories toward the total volume of offences recorded.

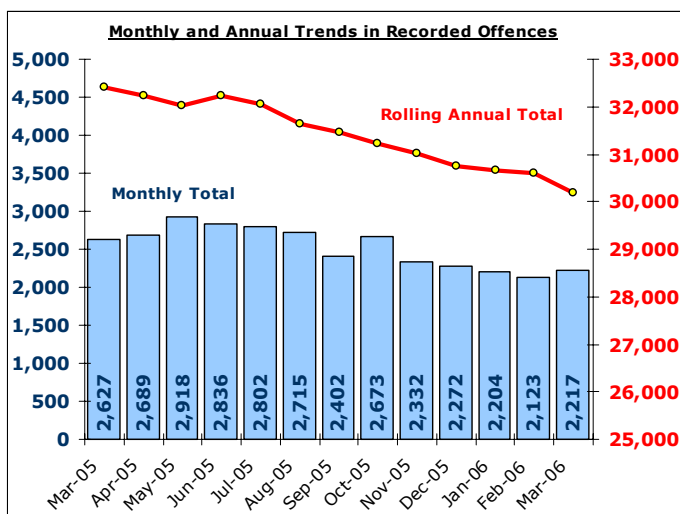


Total Recorded Crime

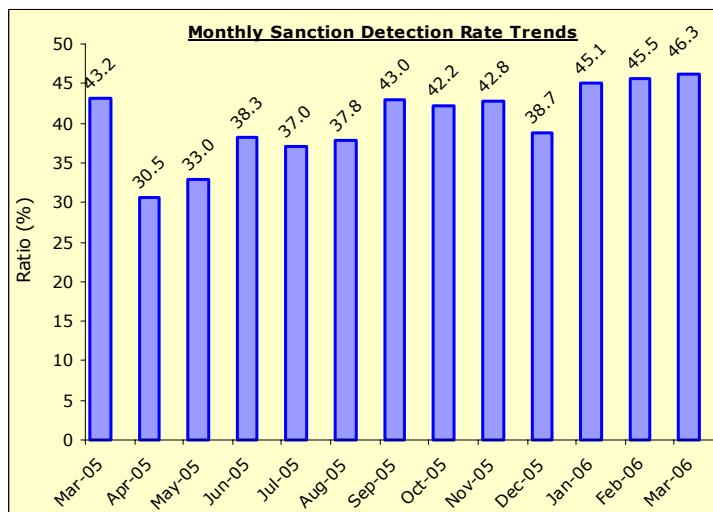
DYFED-POWYS POLICE

TARGET 2005/06 : NO REDUCTION TARGET – 31% SANCTION DETECTION RATE

Recorded Crime Levels – March 2006

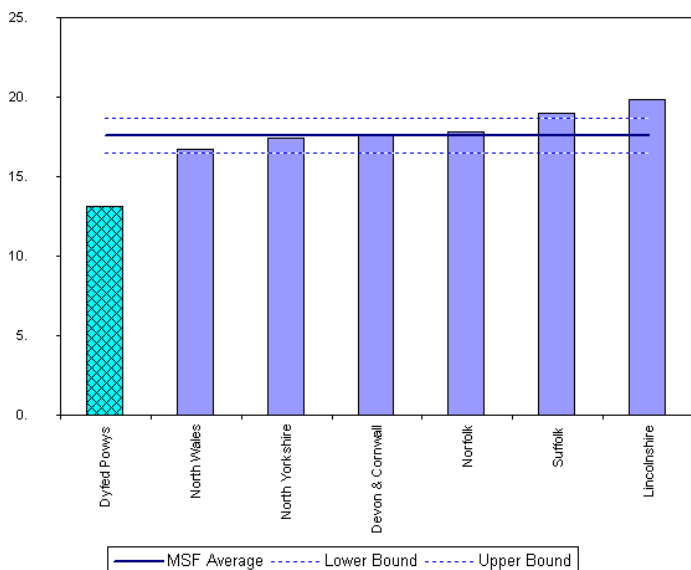


Monthly Sanction Detection Rates – March 2006



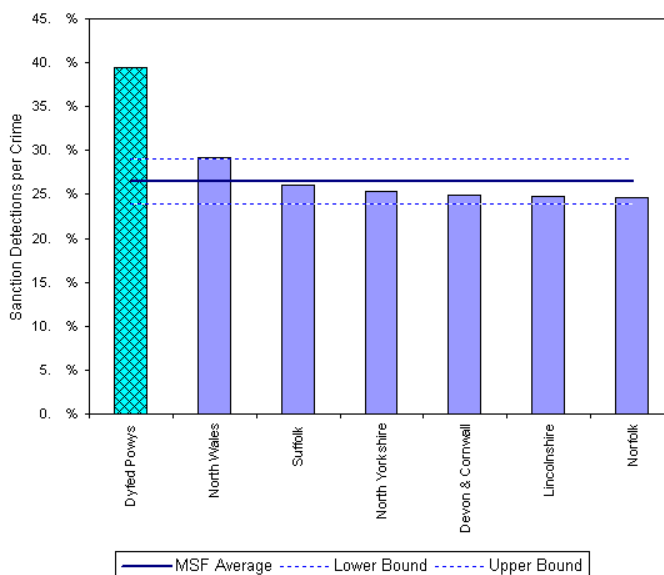
| Total Recorded Crimes | March 2006 YTD | | | Detection Rates YTD | | Annual Trends - SPLY | | |
|-----------------------|----------------|---------------|---------------|---------------------|--------------|----------------------|----------------|----------------|
| | Crimes | Sanction Dets | Total Dets | Sanction % | Total % | Crimes SPLY | Change | % Change |
| FORCE | 30,183 | 11,958 | 13,713 | 39.6% | 45.4% | 32,408 | - 2,225 | - 6.9% |
| CARMS | 11,124 | 4,221 | 4,748 | 37.9% | 42.7% | 12,565 | - 1,441 | - 11.5% |
| CERED | 4,207 | 1,753 | 2,044 | 41.7% | 48.6% | 4,468 | - 261 | - 5.8% |
| PEMBS | 7,738 | 3,060 | 3,577 | 39.5% | 46.2% | 8,247 | - 509 | - 6.2% |
| POWYS | 7,114 | 2,924 | 3,344 | 41.1% | 47.0% | 7,128 | - 14 | - 0.2% |

MSF – Crimes per 1000 Residents 01 December 2005 – 28 February 2006 (latest quarter)



Crimes per 1000 Residents - All Crime - 01 Dec 2005 - 28 Feb 2006

MSF – Sanction detections (annual): 01 March 2005 – 28 February 2006



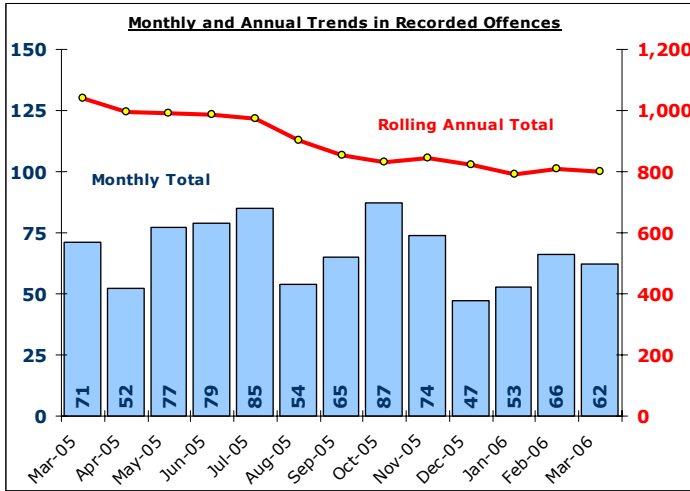
Burdart MSF - Sanction Detections per Crime-Dyfed Powys-All Crime-01 Mar 2005 - 28 Feb 2006

Domestic Burglary

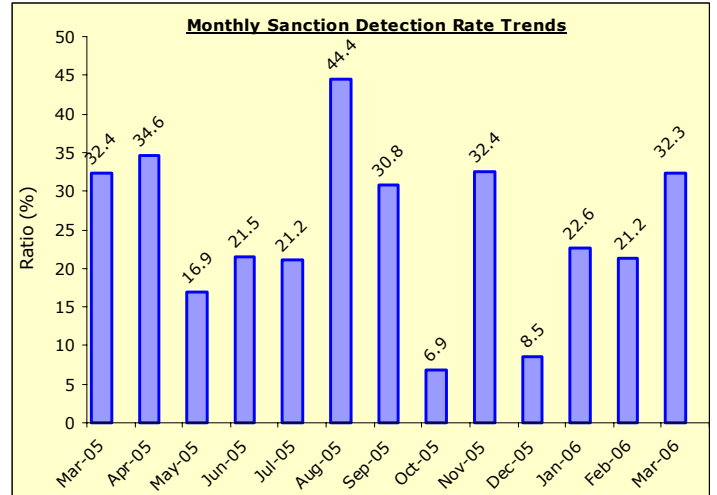
DYFED-POWYS POLICE

TARGET 2005/06 : 0% Increase in offences & 28% total detection rate

Recorded Crime Levels – March 2006

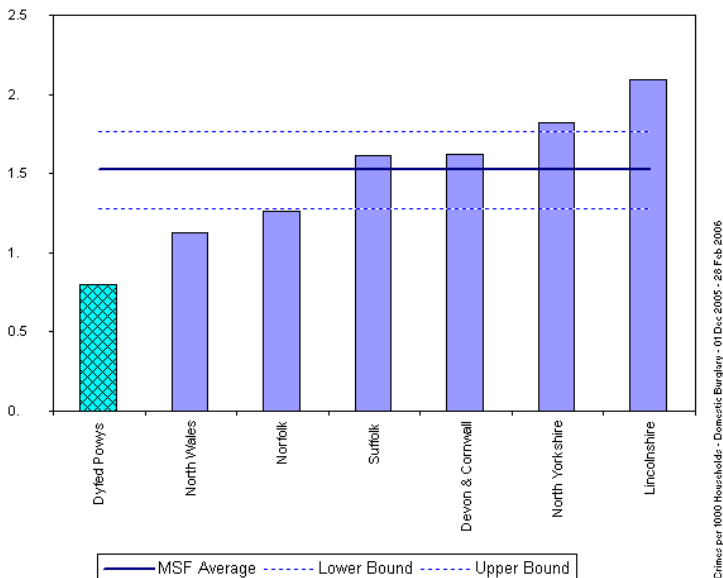


Monthly Sanction Detection Rates – March 2006



| Total Domestic Burglary | March 2006 YTD | | | Detection Rates YTD | | Annual Trends - SPLY | | |
|-------------------------|----------------|---------------|------------|---------------------|--------------|----------------------|--------------|----------------|
| | Crimes | Sanction Dets | Total Dets | Sanction % | Total % | Crimes SPLY | Change | % Change |
| FORCE | 801 | 190 | 197 | 23.7% | 24.6% | 1,042 | - 241 | - 23.1% |
| CARMS | 366 | 92 | 92 | 25.1% | 25.1% | 438 | - 72 | - 16.4% |
| CERED | 92 | 19 | 19 | 20.7% | 20.7% | 124 | - 32 | - 25.8% |
| PEMBS | 171 | 41 | 47 | 24.0% | 27.5% | 250 | - 79 | - 31.6% |
| POWYS | 172 | 38 | 39 | 22.1% | 22.7% | 230 | - 58 | - 25.2% |

MSF – Crimes per 1000 Residents 01 December 2005 – 28 February 2006 (latest quarter)



Crimes per 1000 Residents - Domestic Burglary - 01 Dec 2005 - 28 Feb 2006

MSF – Sanction detections (annual): 01 March 2005 – 28 February 2006

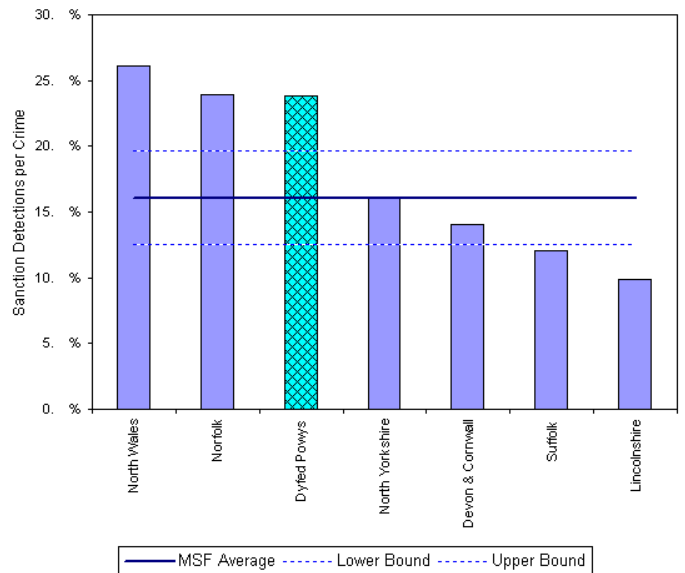


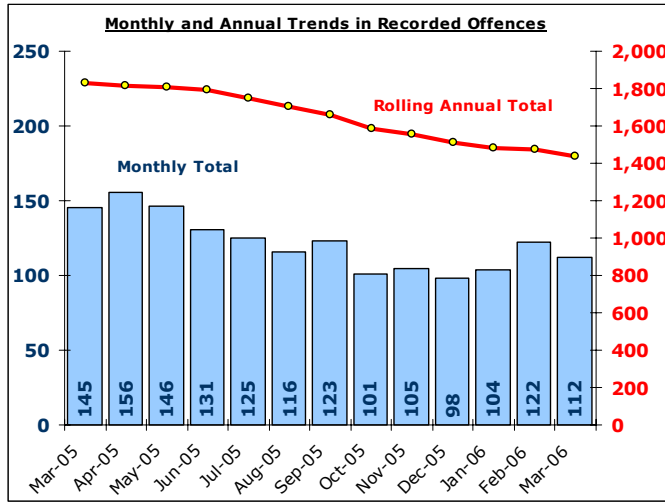
Exhibit MSF - Sanction Detections per Crime-Dyfed Powys-Domestic Burglary-01 Mar 2005 - 28 Feb 2006

Other Burglary

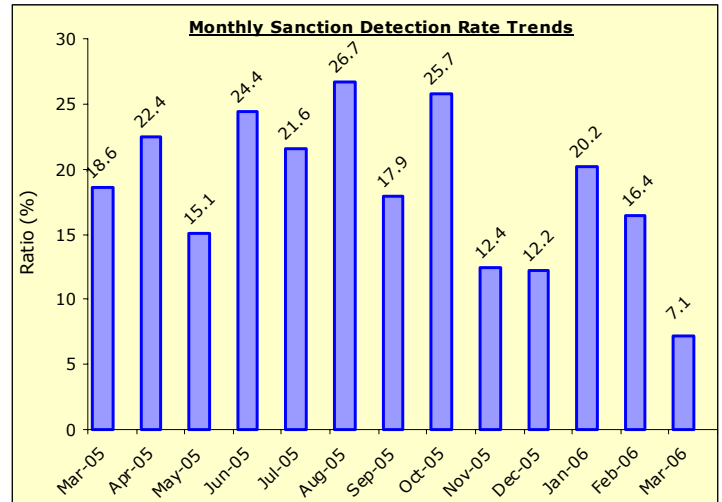
DYFED-POWYS POLICE

TARGET 2005/06 : No Target

Recorded Crime Levels – March 2006

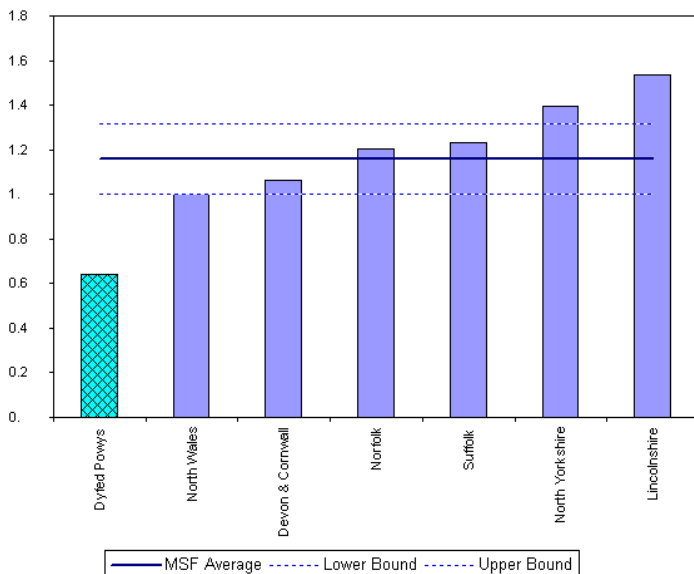


Monthly Sanction Detection Rates – March 2006



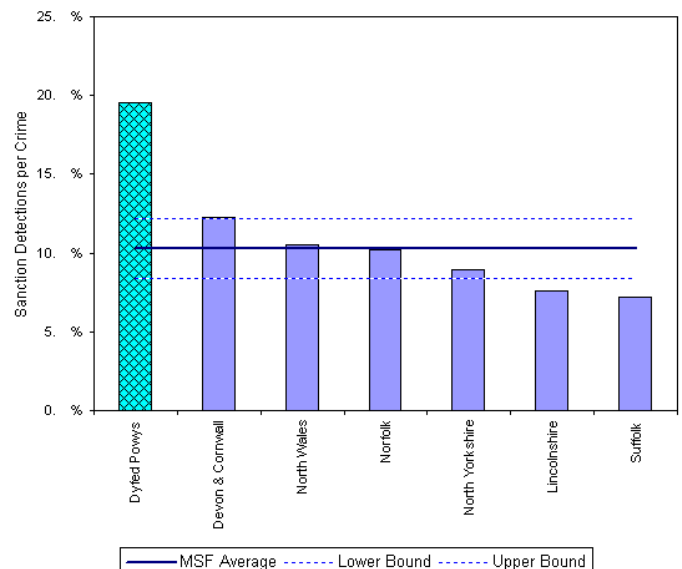
| Total Other Burglary Crimes | March 2006 YTD | | | Detection Rates YTD | | Annual Trends - SPL Y | | |
|-----------------------------|----------------|---------------|------------|---------------------|--------------|-----------------------|--------------|----------------|
| | Crimes | Sanction Dets | Total Dets | Sanction % | Total % | Crimes SPL Y | Change | % Change |
| FORCE | 1,439 | 269 | 287 | 18.7% | 19.9% | 1,833 | - 394 | - 21.5% |
| CARMS | 656 | 120 | 123 | 18.3% | 18.8% | 864 | - 208 | - 24.1% |
| CERED | 139 | 19 | 25 | 13.7% | 18.0% | 196 | - 57 | - 29.1% |
| PEMBS | 277 | 55 | 60 | 19.9% | 21.7% | 325 | - 48 | - 14.8% |
| POWYS | 367 | 75 | 79 | 20.4% | 21.5% | 448 | - 81 | - 18.1% |

MSF – Crimes per 1000 Residents 01 December 2005 – 28 February 2006 (latest quarter)



Crimes per 1000 Residents - Non Domestic Burglary - 01 Dec 2005 - 28 Feb 2006

MSF – Sanction detections (annual): 01 March 2005 – 28 February 2006



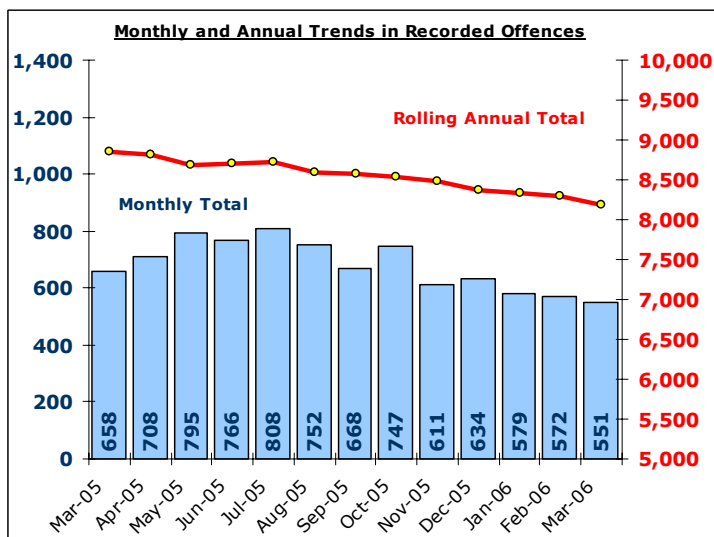
Benchmark MSF - Sanction Detections per Crime-Dyfed Powys-Non Domestic Burglary-01 Mar 2005 - 28 Feb 2006

Total Violent Crime

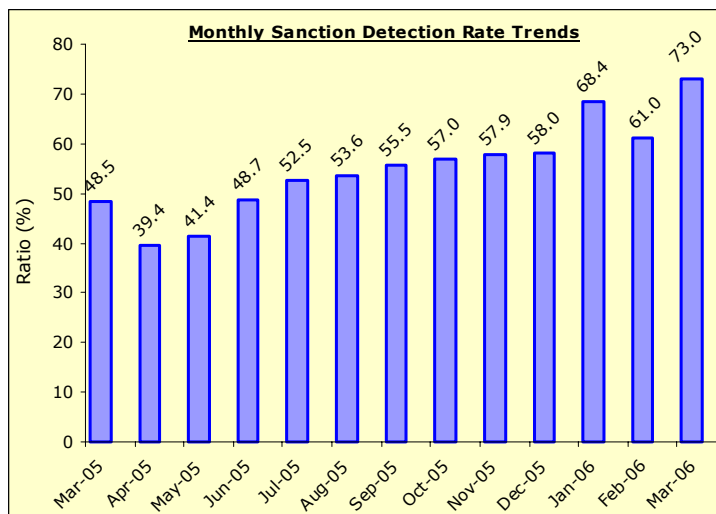
DYFED-POWYS POLICE

TARGET 2005/06 – 3% Reduction in offences & 60% total detection rate

Recorded Crime Levels – March 2006

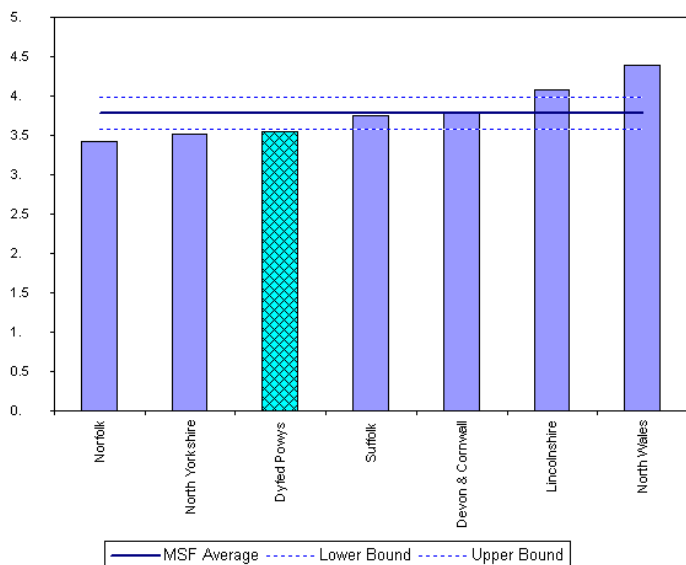


Monthly Sanction Detection Rates – March 2006

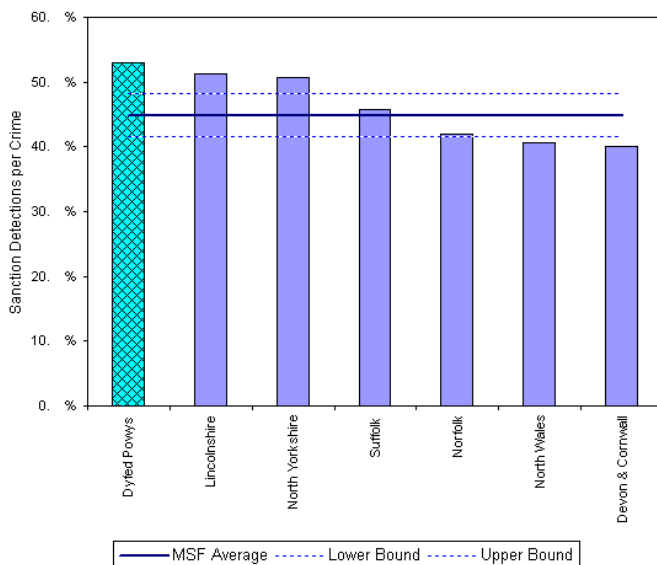


| Total Violent Crimes | March 2006 YTD | | | Detection Rates YTD | | Annual Trends - SPLY | | |
|----------------------|----------------|---------------|--------------|---------------------|--------------|----------------------|--------------|----------------|
| | Crimes | Sanction Dets | Total Dets | Sanction % | Total % | Crimes SPLY | Change | % Change |
| FORCE | 8,191 | 4,474 | 5,491 | 54.6% | 67.0% | 8,859 | - 668 | - 7.5% |
| CARMS | 2,926 | 1,524 | 1,820 | 52.1% | 62.2% | 3,242 | - 316 | - 9.7% |
| CERED | 1,062 | 579 | 748 | 54.5% | 70.4% | 1,353 | - 291 | - 21.5% |
| PEMBS | 1,998 | 1,082 | 1,382 | 54.2% | 69.2% | 2,255 | - 257 | - 11.4% |
| POWYS | 2,205 | 1,289 | 1,541 | 58.5% | 69.9% | 2,009 | + 196 | + 9.8% |

MSF – Crimes per 1000 Residents 01 December 2005 – 28 February 2006 (latest quarter)



MSF – Sanction detections (annual): 01 March 2005 – 28 February 2006

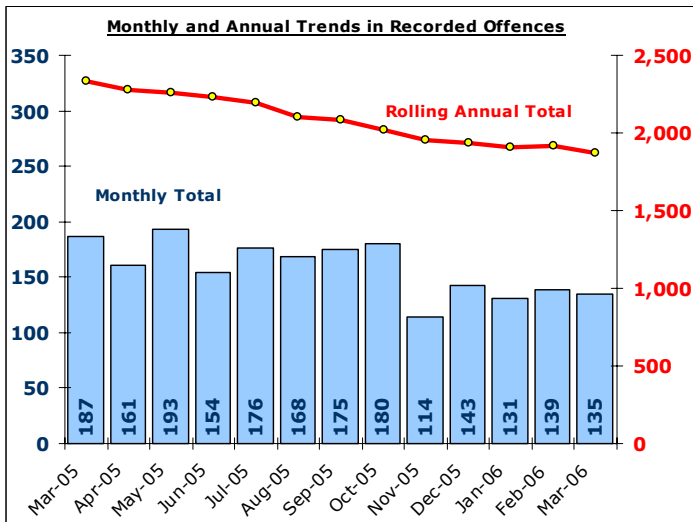


Total Vehicle Crime

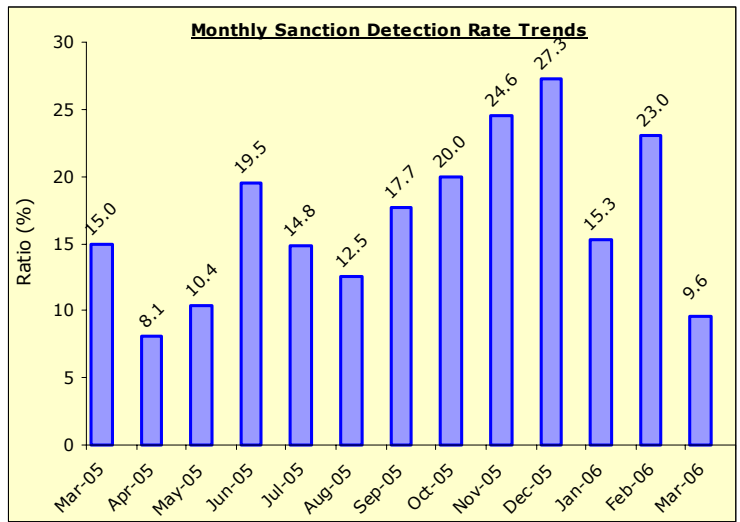
DYFED-POWYS POLICE

TARGET 2005/06 : 0% Increase in offences & 20% total detection rate

Recorded Crime Levels – March 2006

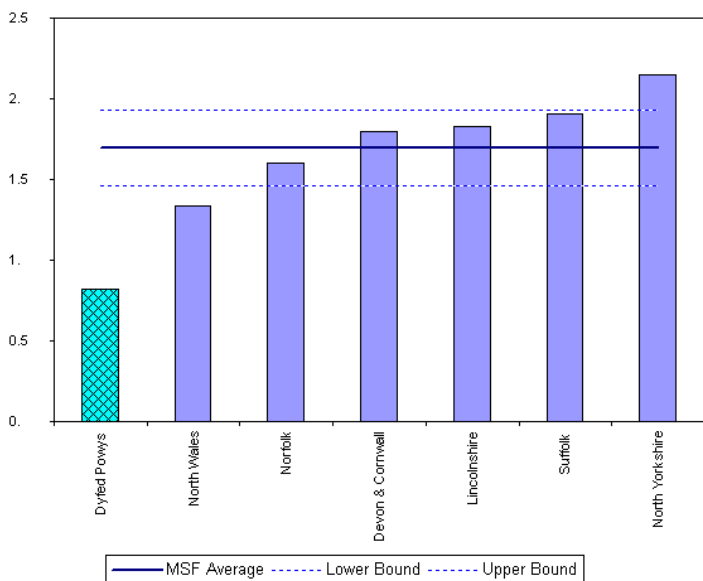


Monthly Sanction Detection Rates – March 2006



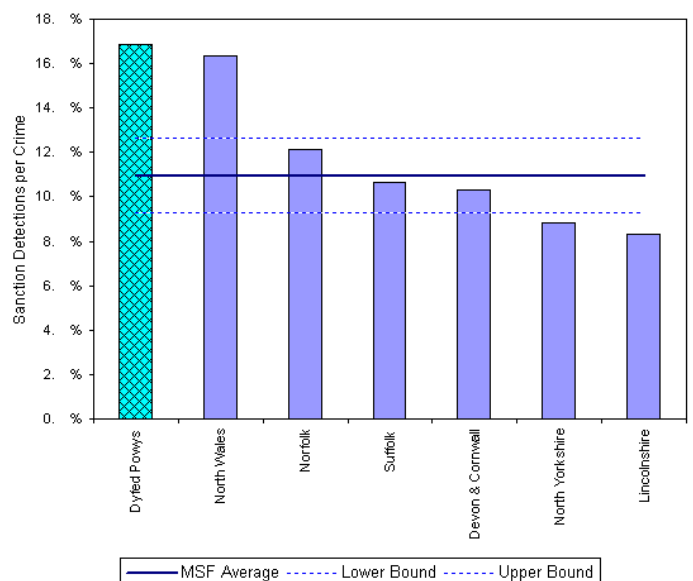
| Total Vehicle Crimes | March 2006 YTD | | | Detection Rates YTD | | Annual Trends - SPLY | | |
|----------------------|----------------|---------------|------------|---------------------|--------------|----------------------|--------------|----------------|
| | Crimes | Sanction Dets | Total Dets | Sanction % | Total % | Crimes SPLY | Change | % Change |
| FORCE | 1,869 | 309 | 330 | 16.5% | 17.7% | 2,331 | - 462 | - 19.8% |
| CARMS | 809 | 118 | 123 | 14.6% | 15.2% | 1,003 | - 194 | - 19.3% |
| CERED | 205 | 35 | 39 | 17.1% | 19.0% | 211 | - 6 | - 2.8% |
| PEMBS | 453 | 84 | 92 | 18.5% | 20.3% | 627 | - 174 | - 27.8% |
| POWYS | 402 | 72 | 76 | 17.9% | 18.9% | 490 | - 88 | - 18.0% |

MSF – Crimes per 1000 Residents 01 December 2005 – 28 February 2006 (latest quarter)



Crimes per 1000 Residents - Vehicle Crime (excluding Vehicle Interference) - 01 Dec 2005 - 28 Feb 2006

MSF – Sanction detections (annual): 01 March 2005 – 28 February 2006



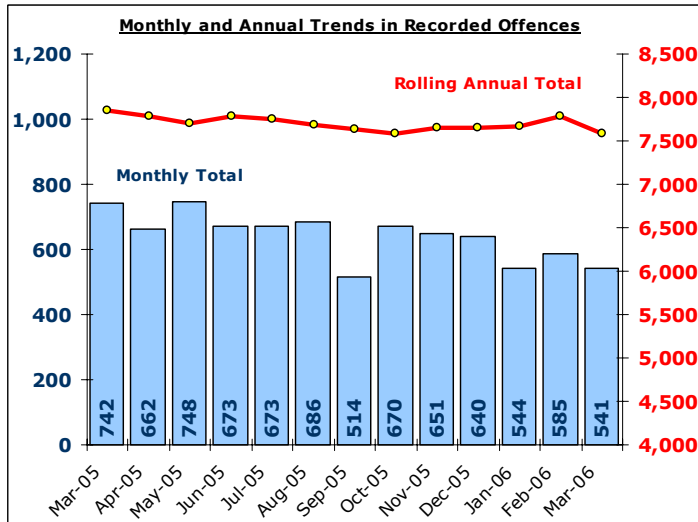
Bar chart MSF - Sanction Detections per Crime-Dyfed Powys-Vehicle Crime (excluding Vehicle Interference)-01 Mar 2005 - 28 Feb 2006

Total Criminal Damage

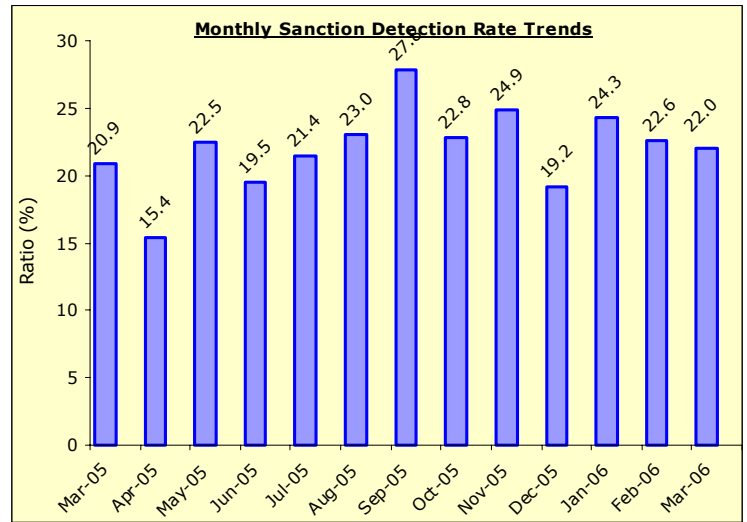
EXCLUDES ARSON % THREAT TO COMMIT CRIMINAL DAMAGE (HOC 56 & 59)

TARGET 2005/06 : NO TARGET

Recorded Crime Levels – March 2006

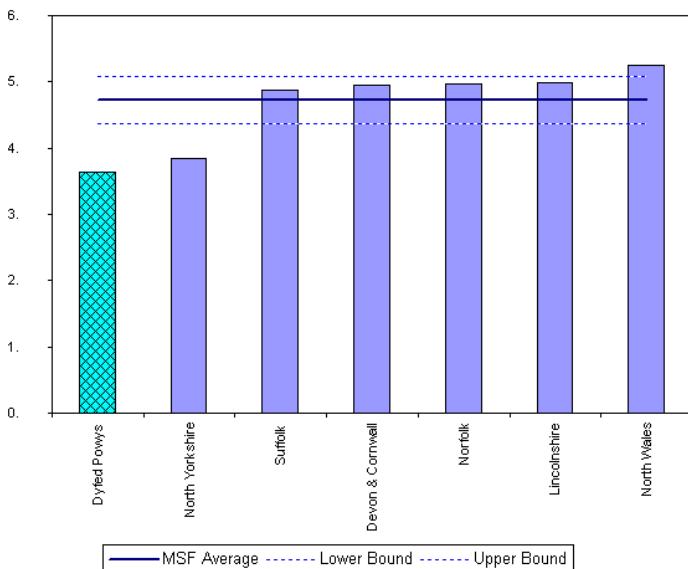


Monthly Sanction Detection Rates – March 2006

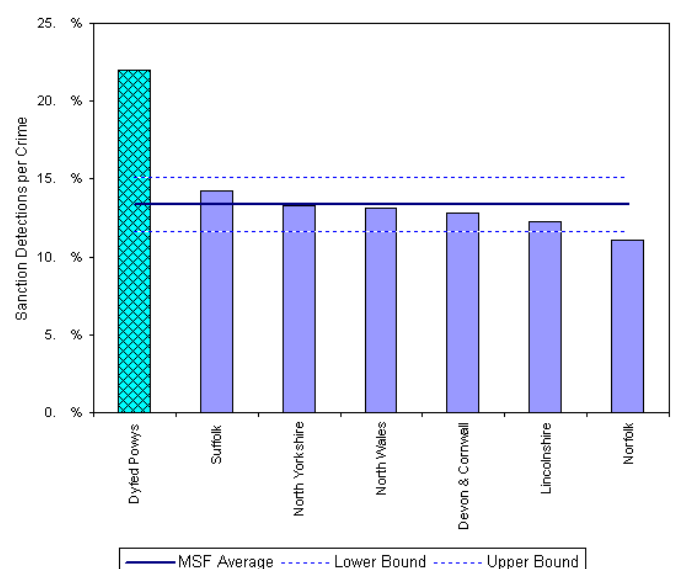


| Total Criminal Damage | March 2006 YTD | | | Detection Rates YTD | | Annual Trends - SPLY | | |
|-----------------------|----------------|---------------|--------------|---------------------|--------------|----------------------|--------------|----------------|
| | Crimes | Sanction Dets | Total Dets | Sanction % | Total % | Crimes SPLY | Change | % Change |
| FORCE | 7,587 | 1,667 | 2,009 | 22.0% | 26.5% | 7,851 | - 264 | - 3.4% |
| CARMS | 2,644 | 542 | 636 | 20.5% | 24.1% | 2,949 | - 305 | - 10.3% |
| CERED | 1,066 | 240 | 280 | 22.5% | 26.3% | 941 | + 125 | + 13.3% |
| PEMBS | 2,238 | 494 | 618 | 22.1% | 27.6% | 2,223 | + 15 | + 0.7% |
| POWYS | 1,639 | 391 | 475 | 23.9% | 29.0% | 1,738 | - 99 | - 5.7% |

MSF – Crimes per 1000 Residents 01 December 2005 – 28 February 2006 (latest quarter)



MSF – Sanction detections (annual): 01 March 2005 – 28 February 2006

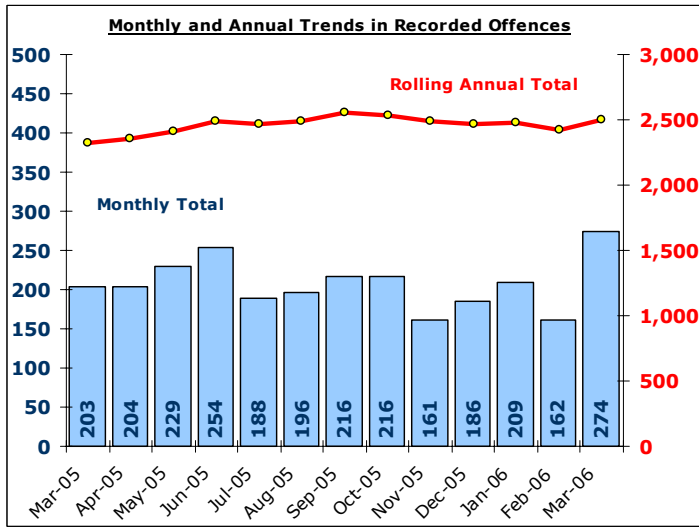


Total Drug Offences

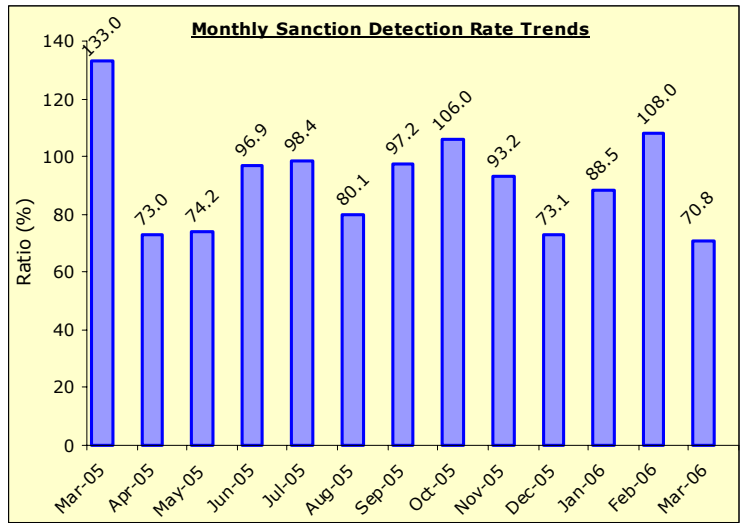
DYFED-POWYS POLICE

TARGET 2005/06 : NO TARGET

Recorded Crime Levels – March 2006

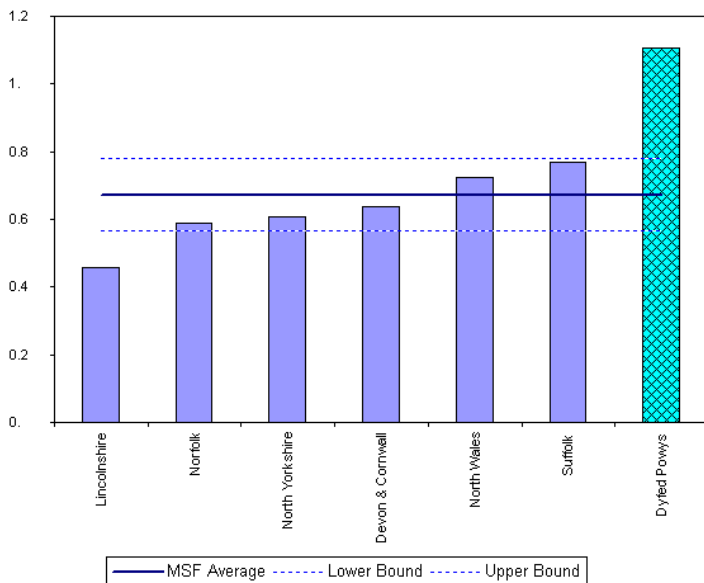


Monthly Sanction Detection Rates – March 2006

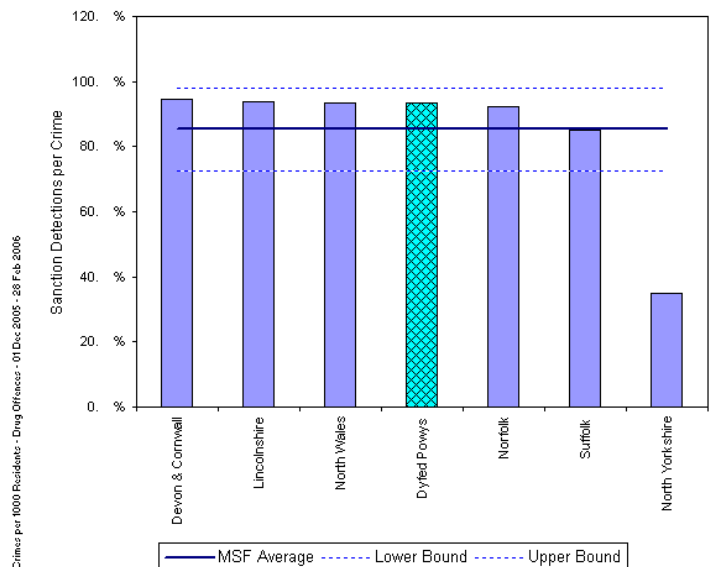


| Total Drug Offences | March 2006 YTD | | | Detection Rates YTD | | Annual Trends - SPLY | | |
|---------------------|----------------|---------------|------------|---------------------|---------|----------------------|--------|----------|
| | Crimes | Sanction Dets | Total Dets | Sanction % | Total % | Crimes SPLY | Change | % Change |
| FORCE | 2,495 | 2,186 | 2,336 | 87.6% | 93.6% | 2,327 | + 168 | + 7.2% |
| CARMS | 975 | 818 | 901 | 83.9% | 92.4% | 953 | + 22 | + 2.3% |
| CERED | 439 | 404 | 419 | 92.0% | 95.4% | 425 | + 14 | + 3.3% |
| PEMBS | 616 | 556 | 580 | 90.3% | 94.2% | 601 | + 15 | + 2.5% |
| POWYS | 465 | 408 | 436 | 87.7% | 93.8% | 348 | + 117 | + 33.6% |

MSF – Crimes per 1000 Residents 01 December 2005 – 28 February 2006 (latest quarter)



MSF – Sanction detections (annual): 01 March 2005 – 28 February 2006



Section Level Sanction Detection Summary

DYFED-POWYS POLICE

TARGET 2005/06 : 31% SANCTION DETECTION RATE

Sanction Detections Performance March 2006 YTD: Total Recorded Crimes

| Sanction Detection Rate | Recorded | Detected | Det Ratio | Recorded | Diff | % Change |
|-------------------------|---------------|---------------|--------------|---------------|----------------|----------------|
| THE FORCE | 30,183 | 11,958 | 39.6% | 32,408 | - 2,225 | - 6.9% |
| Carmarthenshire | 11,124 | 4,221 | 37.9% | 12,565 | - 1,441 | - 11.5% |
| Ammanford (AA) | 1,394 | 566 | 40.6% | 1,440 | - 46 | - 3.2% |
| Carmarthen (AC) | 2,637 | 1,096 | 41.6% | 3,067 | - 430 | - 14.0% |
| Llanelli (AL) | 5,559 | 1,957 | 35.2% | 6,403 | - 844 | - 13.2% |
| Towy Gwendraeth (AT) | 1,534 | 602 | 39.2% | 1,655 | - 121 | - 7.3% |
| Ceredigion | 4,207 | 1,753 | 41.7% | 4,468 | - 261 | - 5.8% |
| Aberystwyth (BA) | 2,285 | 997 | 43.6% | 2,342 | - 57 | - 2.4% |
| Aberaeron (BB) | 395 | 143 | 36.2% | 513 | - 118 | - 23.0% |
| Cardigan (BC) | 984 | 377 | 38.3% | 1,101 | - 117 | - 10.6% |
| Lampeter (BL) | 543 | 236 | 43.5% | 512 | + 31 | + 6.1% |
| Pembrokeshire | 7,738 | 3,060 | 39.5% | 8,247 | - 509 | - 6.2% |
| Fishguard (CF) | 911 | 341 | 37.4% | 928 | - 17 | - 1.8% |
| Haverfordwest (CH) | 1,987 | 886 | 44.6% | 2,167 | - 180 | - 8.3% |
| Milford Haven (CM) | 1,530 | 657 | 42.9% | 1,692 | - 162 | - 9.6% |
| Pembroke Dock (CP) | 1,956 | 685 | 35.0% | 1,895 | + 61 | + 3.2% |
| Tenby (CT) | 1,354 | 491 | 36.3% | 1,565 | - 211 | - 13.5% |
| Powys | 7,114 | 2,924 | 41.1% | 7,128 | - 14 | - 0.2% |
| Brecon (DB) | 1,800 | 691 | 38.4% | 1,624 | + 176 | + 10.8% |
| Llandrindod Wells (DL) | 1,288 | 530 | 41.1% | 1,396 | - 108 | - 7.7% |
| Newtown (DN) | 2,277 | 915 | 40.2% | 2,090 | + 187 | + 8.9% |
| Welshpool (DW) | 1,208 | 556 | 46.0% | 1,350 | - 142 | - 10.5% |
| Ystradgynlais (DY) | 541 | 232 | 42.9% | 668 | - 127 | - 19.0% |

Sanction Detection Performance March 2006 YTD: Domestic Burglary, Violent Crime & Vehicle Crime

| Sanction Detections | Total Domestic Burglary | | | Total Violent Crime | | | Total Vehicle Crime | | |
|------------------------|-------------------------|------------|--------------|---------------------|--------------|--------------|---------------------|------------|--------------|
| | Recorded Crimes | Detected | Det Ratio | Recorded Crimes | Detected | Det Ratio | Recorded Crimes | Detected | Det Ratio |
| THE FORCE | 801 | 190 | 23.7% | 8,191 | 4,474 | 54.6% | 1,869 | 309 | 16.5% |
| Carmarthenshire | 366 | 92 | 25.1% | 2,926 | 1,524 | 52.1% | 809 | 118 | 14.6% |
| Ammanford (AA) | 28 | 10 | 35.7% | 302 | 144 | 47.7% | 111 | 15 | 13.5% |
| Carmarthen (AC) | 55 | 10 | 18.2% | 755 | 439 | 58.1% | 150 | 23 | 15.3% |
| Llanelli (AL) | 229 | 56 | 24.5% | 1,481 | 722 | 48.8% | 431 | 56 | 13.0% |
| Towy Gwendraeth (AT) | 54 | 16 | 29.6% | 388 | 219 | 56.4% | 117 | 24 | 20.5% |
| Ceredigion | 92 | 19 | 20.7% | 1,062 | 579 | 54.5% | 205 | 35 | 17.1% |
| Aberystwyth (BA) | 55 | 11 | 20.0% | 560 | 325 | 58.0% | 97 | 16 | 16.5% |
| Aberaeron (BB) | 4 | 2 | 50.0% | 104 | 58 | 55.8% | 26 | 3 | 11.5% |
| Cardigan (BC) | 27 | 4 | 14.8% | 263 | 123 | 46.8% | 40 | 6 | 15.0% |
| Lampeter (BL) | 6 | 2 | 33.3% | 135 | 73 | 54.1% | 42 | 10 | 23.8% |
| Pembrokeshire | 171 | 41 | 24.0% | 1,998 | 1,082 | 54.2% | 453 | 84 | 18.5% |
| Fishguard (CF) | 17 | 4 | 23.5% | 234 | 116 | 49.6% | 47 | 6 | 12.8% |
| Haverfordwest (CH) | 54 | 11 | 20.4% | 606 | 321 | 53.0% | 73 | 13 | 17.8% |
| Milford Haven (CM) | 33 | 11 | 33.3% | 396 | 224 | 56.6% | 76 | 22 | 28.9% |
| Pembroke Dock (CP) | 42 | 8 | 19.0% | 457 | 228 | 49.9% | 121 | 10 | 8.3% |
| Tenby (CT) | 25 | 7 | 28.0% | 305 | 193 | 63.3% | 136 | 33 | 24.3% |
| Powys | 172 | 38 | 22.1% | 2,205 | 1,289 | 58.5% | 402 | 72 | 17.9% |
| Brecon (DB) | 24 | 3 | 12.5% | 537 | 327 | 60.9% | 114 | 14 | 12.3% |
| Llandrindod Wells (DL) | 38 | 10 | 26.3% | 411 | 257 | 62.5% | 57 | 12 | 21.1% |
| Newtown (DN) | 74 | 18 | 24.3% | 735 | 380 | 51.7% | 109 | 21 | 19.3% |
| Welshpool (DW) | 27 | 7 | 25.9% | 350 | 222 | 63.4% | 68 | 17 | 25.0% |
| Ystradgynlais (DY) | 9 | 0 | 0.0% | 172 | 103 | 59.9% | 54 | 8 | 14.8% |

Target Contribution Summary - Carmarthenshire

DYFED-POWYS POLICE

GREEN/RED indicates current performance **consistent** or **not consistent** with force target reduction & detection rate

| CARMARTHENSHIRE | | April-March YTD | | Last Year | | Indicator |
|---|-------------|-----------------|-------------|-----------|--------------------|-----------|
| CRIME | Performance | Indicator | Performance | Indicator | Change & Detection | |
| Total Crime Recorded (per 1,000 population) | 11124 | 64.4 | 12568 | 72.7 | -11.5% | |
| Total Detections (% rate) | 4748 | 42.7% | 5261 | 41.9% | 42.7% | |
| Burglary Dwelling (per 1,000 households) | 366 | 5.0 | 438 | 6.0 | -16.4% | |
| Total Detections (% rate) | 92 | 25.1% | 113 | 25.8% | 25.1% | |
| Total Violent Crime (per 1,000 population) | 2926 | 16.9 | 3243 | 18.8 | -9.8% | |
| Total Detections (% rate) | 1820 | 62.2% | 2065 | 63.7% | 62.2% | |
| Autocrime per (1,000 population) | 809 | 4.7 | 1003 | 5.8 | -19.3% | |
| Total Detections (% rate) | 123 | 15.2% | 193 | 19.2% | 15.2% | |
| Ammanford | | April-March YTD | | Last Year | | Indicator |
| CRIME | Performance | Indicator | Performance | Indicator | Change & Detection | |
| Total Crime Recorded (per 1,000 population) | 1394 | 42.7 | 1440 | 44.1 | -3.2% | |
| Total Detections (% rate) | 634 | 45.5% | 701 | 48.7% | 45.5% | |
| Burglary Dwelling (per 1,000 households) | 28 | 2.0 | 38 | 2.8 | -26.3% | |
| Total Detections (% rate) | 10 | 35.7% | 13 | 34.2% | 35.7% | |
| Total Violent Crime (per 1,000 population) | 302 | 9.2 | 406 | 12.4 | -25.6% | |
| Total Detections (% rate) | 172 | 57.0% | 282 | 69.5% | 57.0% | |
| Autocrime per (1,000 population) | 111 | 3.4 | 93 | 2.8 | 19.4% | |
| Total Detections (% rate) | 16 | 14.4% | 15 | 16.1% | 14.4% | |
| Carmarthen | | April-March YTD | | Last Year | | Indicator |
| CRIME | Performance | Indicator | Performance | Indicator | Change & Detection | |
| Total Crime Recorded (per 1,000 population) | 2637 | 53.3 | 3063 | 61.9 | -13.9% | |
| Total Detections (% rate) | 1221 | 46.3% | 1516 | 49.5% | 46.3% | |
| Burglary Dwelling (per 1,000 households) | 55 | 2.6 | 65 | 3.1 | -15.4% | |
| Total Detections (% rate) | 10 | 18.2% | 12 | 18.5% | 18.2% | |
| Total Violent Crime (per 1,000 population) | 755 | 15.3 | 864 | 17.5 | -12.6% | |
| Total Detections (% rate) | 514 | 68.1% | 579 | 67.0% | 68.1% | |
| Autocrime per (1,000 population) | 150 | 3.0 | 146 | 3.0 | 2.7% | |
| Total Detections (% rate) | 23 | 15.3% | 27 | 18.5% | 15.3% | |
| Llanelli | | April-March YTD | | Last Year | | Indicator |
| CRIME | Performance | Indicator | Performance | Indicator | Change & Detection | |
| Total Crime Recorded (per 1,000 population) | 5559 | 91.9 | 6405 | 105.9 | -13.2% | |
| Total Detections (% rate) | 2226 | 40.0% | 2375 | 37.1% | 40.0% | |
| Burglary Dwelling (per 1,000 households) | 228 | 8.7 | 266 | 10.2 | -14.3% | |
| Total Detections (% rate) | 56 | 24.6% | 70 | 26.3% | 24.6% | |
| Total Violent Crime (per 1,000 population) | 1480 | 24.5 | 1592 | 26.3 | -7.0% | |
| Total Detections (% rate) | 885 | 59.8% | 957 | 60.1% | 59.8% | |
| Autocrime per (1,000 population) | 430 | 7.1 | 608 | 10.1 | -29.3% | |
| Total Detections (% rate) | 59 | 13.7% | 130 | 21.4% | 13.7% | |
| Towy/Gwenraeth | | April-March YTD | | Last Year | | Indicator |
| CRIME | Performance | Indicator | Performance | Indicator | Change & Detection | |
| Total Crime Recorded (per 1,000 population) | 1534 | 50.7 | 1656 | 54.8 | -7.4% | |
| Total Detections (% rate) | 666 | 43.4% | 666 | 40.2% | 43.4% | |
| Burglary Dwelling (per 1,000 households) | 54 | 4.4 | 69 | 5.6 | -21.7% | |
| Total Detections (% rate) | 16 | 29.6% | 18 | 26.1% | 29.6% | |
| Total Violent Crime (per 1,000 population) | 388 | 12.8 | 380 | 12.6 | 2.1% | |
| Total Detections (% rate) | 249 | 64.2% | 246 | 64.7% | 64.2% | |
| Autocrime per (1,000 population) | 117 | 3.9 | 156 | 5.2 | -25.0% | |
| Total Detections (% rate) | 25 | 21.4% | 21 | 13.5% | 21.4% | |

Target Contribution Summary - Ceredigion

DYFED-POWYS POLICE

GREEN/RED indicates current performance **consistent** or **not consistent** with force target reduction & detection rate

| CEREDIGION | | April-March YTD | | Last Year | | Indicator |
|---|-------------|-----------------|-------------|-----------|--------------------|-----------|
| CRIME | Performance | Indicator | Performance | Indicator | Change & Detection | |
| Total Crime Recorded (per 1,000 population) | 4207 | 56.1 | 4468 | 59.6 | -5.8% | |
| Total Detections (% rate) | 2044 | 48.6% | 2046 | 45.8% | 48.6% | |
| Burglary Dwelling (per 1,000 households) | 92 | 3.0 | 124 | 4.0 | -25.8% | |
| Total Detections (% rate) | 19 | 20.7% | 35 | 28.2% | 20.7% | |
| Total Violent Crime (per 1,000 population) | 1062 | 14.2 | 1353 | 18.1 | -21.5% | |
| Total Detections (% rate) | 748 | 70.4% | 768 | 56.8% | 70.4% | |
| Autocrime per (1,000 population) | 205 | 2.7 | 211 | 2.8 | -2.8% | |
| Total Detections (% rate) | 39 | 19.0% | 49 | 23.2% | 19.0% | |
| Ceredigion North | | April-March YTD | | Last Year | | Indicator |
| CRIME | Performance | Indicator | Performance | Indicator | Change & Detection | |
| Total Crime Recorded (per 1,000 population) | 2285 | 71.8 | 2341 | 73.6 | -2.4% | |
| Total Detections (% rate) | 1112 | 48.7% | 1142 | 48.8% | 48.7% | |
| Burglary Dwelling (per 1,000 households) | 55 | 4.4 | 41 | 3.3 | 34.1% | |
| Total Detections (% rate) | 11 | 20.0% | 11 | 26.8% | 20.0% | |
| Total Violent Crime (per 1,000 population) | 560 | 17.6 | 714 | 22.5 | -21.6% | |
| Total Detections (% rate) | 392 | 70.0% | 413 | 57.8% | 70.0% | |
| Autocrime per (1,000 population) | 97 | 3.1 | 94 | 3.0 | 3.2% | |
| Total Detections (% rate) | 17 | 17.5% | 17 | 18.1% | 17.5% | |
| Ceredigion South | | April-March YTD | | Last Year | | Indicator |
| CRIME | Performance | Indicator | Performance | Indicator | Change & Detection | |
| Total Crime Recorded (per 1,000 population) | 1922 | 44.8 | 2127 | 49.5 | -9.6% | |
| Total Detections (% rate) | 932 | 48.5% | 904 | 42.5% | 48.5% | |
| Burglary Dwelling (per 1,000 households) | 37 | 2.0 | 83 | 4.5 | -55.4% | |
| Total Detections (% rate) | 8 | 21.6% | 24 | 28.9% | 21.6% | |
| Total Violent Crime (per 1,000 population) | 502 | 11.7 | 639 | 14.9 | -21.4% | |
| Total Detections (% rate) | 356 | 70.9% | 355 | 55.6% | 70.9% | |
| Autocrime per (1,000 population) | 108 | 2.5 | 117 | 2.7 | -7.7% | |
| Total Detections (% rate) | 22 | 20.4% | 32 | 27.4% | 20.4% | |

Ceredigion South is an area used for comparison purposes only. It incorporates the three section areas of Lampeter/Aberaeron and Cardigan. Details on these three discrete areas are also included here for information.

| Aberaeron | | April-March YTD | | Last Year | | Indicator |
|---|-------------|-----------------|-------------|-----------|--------------------|-----------|
| CRIME | Performance | Indicator | Performance | Indicator | Change & Detection | |
| Total Crime Recorded (per 1,000 population) | 395 | 31.2 | 513 | 40.5 | -23.0% | |
| Total Detections (% rate) | 168 | 42.5% | 198 | 38.6% | 42.5% | |
| Burglary Dwelling (per 1,000 households) | 4 | 0.7 | 22 | 4.0 | -81.8% | |
| Total Detections (% rate) | 2 | 50.0% | 3 | 13.6% | 50.0% | |
| Total Violent Crime (per 1,000 population) | 104 | 8.2 | 135 | 10.6 | -23.0% | |
| Total Detections (% rate) | 68 | 65.4% | 75 | 55.6% | 65.4% | |
| Autocrime per (1,000 population) | 26 | 2.1 | 20 | 1.6 | 30.0% | |
| Total Detections (% rate) | 4 | 15.4% | 6 | 30.0% | 15.4% | |
| Cardigan | | April-March YTD | | Last Year | | Indicator |
| CRIME | Performance | Indicator | Performance | Indicator | Change & Detection | |
| Total Crime Recorded (per 1,000 population) | 984 | 52.2 | 1101 | 58.4 | -10.6% | |
| Total Detections (% rate) | 454 | 46.1% | 482 | 43.8% | 46.1% | |
| Burglary Dwelling (per 1,000 households) | 27 | 3.3 | 39 | 4.7 | -30.8% | |
| Total Detections (% rate) | 4 | 14.8% | 16 | 41.0% | 14.8% | |
| Total Violent Crime (per 1,000 population) | 263 | 13.9 | 349 | 18.5 | -24.6% | |
| Total Detections (% rate) | 179 | 68.1% | 197 | 56.4% | 68.1% | |
| Autocrime per (1,000 population) | 40 | 2.1 | 56 | 3.0 | -28.6% | |
| Total Detections (% rate) | 6 | 15.0% | 15 | 26.8% | 15.0% | |
| Lampeter | | April-March YTD | | Last Year | | Indicator |
| CRIME | Performance | Indicator | Performance | Indicator | Change & Detection | |
| Total Crime Recorded (per 1,000 population) | 543 | 46.9 | 513 | 44.3 | 5.8% | |
| Total Detections (% rate) | 310 | 57.1% | 224 | 43.7% | 57.1% | |
| Burglary Dwelling (per 1,000 households) | 6 | 1.3 | 22 | 4.6 | -72.7% | |
| Total Detections (% rate) | 2 | 33.3% | 5 | 22.7% | 33.3% | |
| Total Violent Crime (per 1,000 population) | 135 | 11.6 | 155 | 13.4 | -12.9% | |
| Total Detections (% rate) | 109 | 80.7% | 83 | 53.5% | 80.7% | |
| Autocrime per (1,000 population) | 42 | 3.6 | 41 | 3.5 | 2.4% | |
| Total Detections (% rate) | 12 | 28.6% | 11 | 26.8% | 28.6% | |

Target Contribution Summary - Pembrokeshire

DYFED-POWYS POLICE

GREEN/RED indicates current performance **consistent** or **not consistent** with force target reduction & total detection rate

| PEMBROKESHIRE | | April-March YTD | | Last Year | | Indicator |
|---|-------------|-----------------|-------------|-----------|--------------------|-----------|
| CRIME | Performance | Indicator | Performance | Indicator | Change & Detection | |
| Total Crime Recorded (per 1,000 population) | 7738 | 67.8 | 8250 | 72.3 | -6.2% | |
| Total Detections (% rate) | 3577 | 46.2% | 3737 | 45.3% | 46.2% | |
| Burglary Dwelling (per 1,000 households) | 171 | 3.5 | 250 | 5.2 | -31.6% | |
| Total Detections (% rate) | 47 | 27.5% | 68 | 27.2% | 27.5% | |
| Total Violent Crime (per 1,000 population) | 1998 | 17.5 | 2256 | 19.8 | -11.4% | |
| Total Detections (% rate) | 1382 | 69.2% | 1514 | 67.1% | 69.2% | |
| Autocrime per (1,000 population) | 453 | 4.0 | 627 | 5.5 | -27.8% | |
| Total Detections (% rate) | 92 | 20.3% | 131 | 20.9% | 20.3% | |
| Fishguard | | April-March YTD | | Last Year | | Indicator |
| CRIME | Performance | Indicator | Performance | Indicator | Change & Detection | |
| Total Crime Recorded (per 1,000 population) | 911 | 34.4 | 928 | 35.0 | -1.8% | |
| Total Detections (% rate) | 420 | 46.1% | 479 | 51.6% | 46.1% | |
| Burglary Dwelling (per 1,000 households) | 17 | 1.5 | 30 | 2.7 | -43.3% | |
| Total Detections (% rate) | 5 | 29.4% | 12 | 40.0% | 29.4% | |
| Total Violent Crime (per 1,000 population) | 234 | 8.8 | 229 | 8.6 | 2.2% | |
| Total Detections (% rate) | 164 | 70.1% | 187 | 81.7% | 70.1% | |
| Autocrime per (1,000 population) | 47 | 1.8 | 82 | 3.1 | -42.7% | |
| Total Detections (% rate) | 8 | 17.0% | 23 | 28.0% | 17.0% | |
| Haverfordwest | | April-March YTD | | Last Year | | Indicator |
| CRIME | Performance | Indicator | Performance | Indicator | Change & Detection | |
| Total Crime Recorded (per 1,000 population) | 1987 | 99.4 | 2167 | 108.4 | -8.3% | |
| Total Detections (% rate) | 1014 | 51.0% | 1043 | 48.1% | 51.0% | |
| Burglary Dwelling (per 1,000 households) | 54 | 6.4 | 77 | 9.1 | -29.9% | |
| Total Detections (% rate) | 13 | 24.1% | 13 | 16.9% | 24.1% | |
| Total Violent Crime (per 1,000 population) | 606 | 30.3 | 639 | 32.0 | -5.2% | |
| Total Detections (% rate) | 403 | 66.5% | 413 | 64.6% | 66.5% | |
| Autocrime per (1,000 population) | 73 | 3.7 | 136 | 6.8 | -46.3% | |
| Total Detections (% rate) | 13 | 17.8% | 22 | 16.2% | 17.8% | |
| Milford Haven | | April-March YTD | | Last Year | | Indicator |
| CRIME | Performance | Indicator | Performance | Indicator | Change & Detection | |
| Total Crime Recorded (per 1,000 population) | 1530 | 62.7 | 1693 | 69.4 | -9.6% | |
| Total Detections (% rate) | 748 | 48.9% | 829 | 49.0% | 48.9% | |
| Burglary Dwelling (per 1,000 households) | 33 | 3.2 | 37 | 3.6 | -10.8% | |
| Total Detections (% rate) | 14 | 42.4% | 16 | 43.2% | 42.4% | |
| Total Violent Crime (per 1,000 population) | 396 | 16.2 | 456 | 18.7 | -13.2% | |
| Total Detections (% rate) | 284 | 71.7% | 334 | 73.2% | 71.7% | |
| Autocrime per (1,000 population) | 76 | 3.1 | 113 | 4.6 | -32.7% | |
| Total Detections (% rate) | 26 | 34.2% | 43 | 38.1% | 34.2% | |
| Pembroke Dock | | April-March YTD | | Last Year | | Indicator |
| CRIME | Performance | Indicator | Performance | Indicator | Change & Detection | |
| Total Crime Recorded (per 1,000 population) | 1956 | 102.4 | 1896 | 99.2 | 3.2% | |
| Total Detections (% rate) | 829 | 42.4% | 740 | 39.0% | 42.4% | |
| Burglary Dwelling (per 1,000 households) | 42 | 5.2 | 56 | 7.0 | -25.0% | |
| Total Detections (% rate) | 8 | 19.0% | 15 | 26.8% | 19.0% | |
| Total Violent Crime (per 1,000 population) | 457 | 23.9 | 512 | 26.8 | -10.7% | |
| Total Detections (% rate) | 297 | 65.0% | 323 | 63.1% | 65.0% | |
| Autocrime per (1,000 population) | 121 | 6.3 | 187 | 9.8 | -35.3% | |
| Total Detections (% rate) | 11 | 9.1% | 19 | 10.2% | 9.1% | |
| Tenby | | April-March YTD | | Last Year | | Indicator |
| CRIME | Performance | Indicator | Performance | Indicator | Change & Detection | |
| Total Crime Recorded (per 1,000 population) | 1354 | 56.1 | 1566 | 64.8 | -13.5% | |
| Total Detections (% rate) | 566 | 41.8% | 646 | 41.3% | 41.8% | |
| Burglary Dwelling (per 1,000 households) | 25 | 2.4 | 50 | 4.8 | -50.0% | |
| Total Detections (% rate) | 7 | 28.0% | 12 | 24.0% | 28.0% | |
| Total Violent Crime (per 1,000 population) | 305 | 12.6 | 420 | 17.4 | -27.4% | |
| Total Detections (% rate) | 234 | 76.7% | 257 | 61.2% | 76.7% | |
| Autocrime per (1,000 population) | 136 | 5.6 | 109 | 4.5 | 24.8% | |
| Total Detections (% rate) | 34 | 25.0% | 24 | 22.0% | 25.0% | |

Target Contribution Summary - Powys

DYFED-POWYS POLICE

GREEN/RED indicates current performance **consistent** or **not consistent** with force target reduction & detection rate

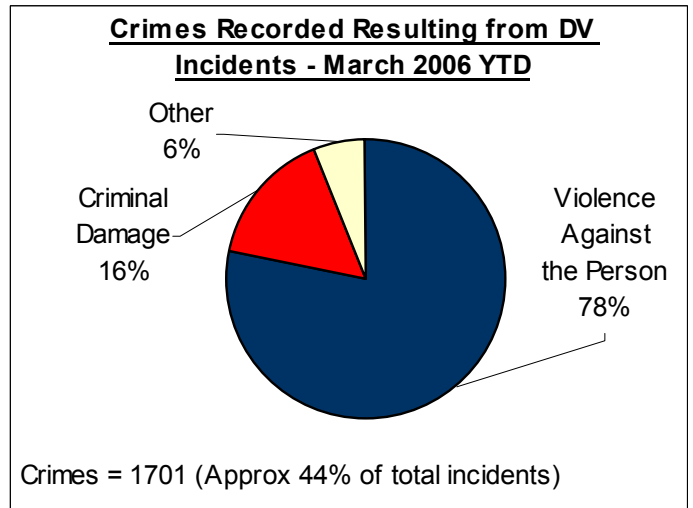
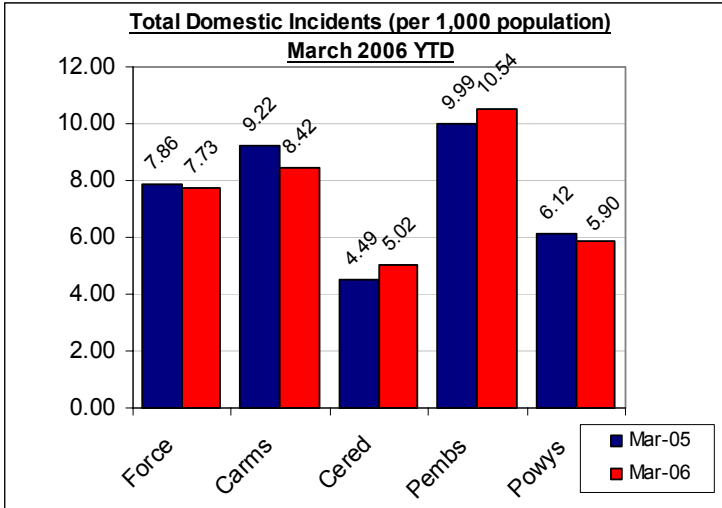
| POWYS | | April-March YTD | | Last Year | | Indicator |
|---|-------------|-----------------|-------------|-----------|--------------------|-----------|
| CRIME | Performance | Indicator | Performance | Indicator | Change & Detection | |
| Total Crime Recorded (per 1,000 population) | 7114 | 56.3 | 7129 | 56.4 | -0.2% | |
| Total Detections (% rate) | 3344 | 47.0% | 3146 | 44.1% | 47.0% | |
| Burglary Dwelling (per 1,000 households) | 172 | 3.2 | 230 | 4.3 | -25.2% | |
| Total Detections (% rate) | 39 | 22.7% | 42 | 18.3% | 22.7% | |
| Total Violent Crime (per 1,000 population) | 2205 | 17.5 | 2009 | 15.9 | 9.8% | |
| Total Detections (% rate) | 1541 | 69.9% | 1351 | 67.2% | 69.9% | |
| Autocrime per (1,000 population) | 402 | 3.2 | 491 | 3.9 | -18.1% | |
| Total Detections (% rate) | 76 | 18.9% | 112 | 22.8% | 18.9% | |
| Brecon | | April-March YTD | | Last Year | | Indicator |
| CRIME | Performance | Indicator | Performance | Indicator | Change & Detection | |
| Total Crime Recorded (per 1,000 population) | 1800 | 70.4 | 1625 | 63.5 | 10.8% | |
| Total Detections (% rate) | 809 | 44.9% | 692 | 42.6% | 44.9% | |
| Burglary Dwelling (per 1,000 households) | 24 | 2.2 | 40 | 3.7 | -40.0% | |
| Total Detections (% rate) | 3 | 12.5% | 8 | 20.0% | 12.5% | |
| Total Violent Crime (per 1,000 population) | 537 | 21.0 | 457 | 17.9 | 17.5% | |
| Total Detections (% rate) | 397 | 73.9% | 297 | 65.0% | 73.9% | |
| Autocrime per (1,000 population) | 114 | 4.5 | 120 | 4.7 | -5.0% | |
| Total Detections (% rate) | 14 | 12.3% | 22 | 18.3% | 12.3% | |
| Llandrindod Wells | | April-March YTD | | Last Year | | Indicator |
| CRIME | Performance | Indicator | Performance | Indicator | Change & Detection | |
| Total Crime Recorded (per 1,000 population) | 1288 | 45.6 | 1396 | 49.5 | -7.7% | |
| Total Detections (% rate) | 621 | 48.2% | 684 | 49.0% | 48.2% | |
| Burglary Dwelling (per 1,000 households) | 38 | 3.1 | 60 | 4.9 | -36.7% | |
| Total Detections (% rate) | 10 | 26.3% | 13 | 21.7% | 26.3% | |
| Total Violent Crime (per 1,000 population) | 411 | 14.6 | 426 | 15.1 | -3.5% | |
| Total Detections (% rate) | 314 | 76.4% | 294 | 69.0% | 76.4% | |
| Autocrime per (1,000 population) | 57 | 2.0 | 80 | 2.8 | -28.8% | |
| Total Detections (% rate) | 14 | 24.6% | 14 | 17.5% | 24.6% | |
| Newtown | | April-March YTD | | Last Year | | Indicator |
| CRIME | Performance | Indicator | Performance | Indicator | Change & Detection | |
| Total Crime Recorded (per 1,000 population) | 2277 | 64.8 | 2090 | 59.5 | 8.9% | |
| Total Detections (% rate) | 1035 | 45.5% | 823 | 39.4% | 45.5% | |
| Burglary Dwelling (per 1,000 households) | 74 | 4.9 | 91 | 6.1 | -18.7% | |
| Total Detections (% rate) | 19 | 25.7% | 11 | 12.1% | 25.7% | |
| Total Violent Crime (per 1,000 population) | 735 | 20.9 | 590 | 16.8 | 24.6% | |
| Total Detections (% rate) | 453 | 61.6% | 364 | 61.7% | 61.6% | |
| Autocrime per (1,000 population) | 109 | 3.1 | 115 | 3.3 | -5.2% | |
| Total Detections (% rate) | 21 | 19.3% | 30 | 26.1% | 19.3% | |
| Welshpool | | April-March YTD | | Last Year | | Indicator |
| CRIME | Performance | Indicator | Performance | Indicator | Change & Detection | |
| Total Crime Recorded (per 1,000 population) | 1208 | 47.3 | 1350 | 52.9 | -10.5% | |
| Total Detections (% rate) | 613 | 50.7% | 600 | 44.4% | 50.7% | |
| Burglary Dwelling (per 1,000 households) | 27 | 2.5 | 28 | 2.6 | -3.6% | |
| Total Detections (% rate) | 7 | 25.9% | 6 | 21.4% | 25.9% | |
| Total Violent Crime (per 1,000 population) | 350 | 13.7 | 341 | 13.4 | 2.6% | |
| Total Detections (% rate) | 253 | 72.3% | 249 | 73.0% | 72.3% | |
| Autocrime per (1,000 population) | 68 | 2.7 | 101 | 4.0 | -32.7% | |
| Total Detections (% rate) | 19 | 27.9% | 30 | 29.7% | 27.9% | |
| Ystradgynlais | | April-March YTD | | Last Year | | Indicator |
| CRIME | Performance | Indicator | Performance | Indicator | Change & Detection | |
| Total Crime Recorded (per 1,000 population) | 541 | 45.6 | 668 | 56.3 | -19.0% | |
| Total Detections (% rate) | 266 | 49.2% | 347 | 51.9% | 49.2% | |
| Burglary Dwelling (per 1,000 households) | 9 | 1.8 | 11 | 2.2 | -18.2% | |
| Total Detections (% rate) | 0 | 0.0% | 4 | 36.4% | 0.0% | |
| Total Violent Crime (per 1,000 population) | 172 | 14.5 | 195 | 16.4 | -11.8% | |
| Total Detections (% rate) | 124 | 72.1% | 147 | 75.4% | 72.1% | |
| Autocrime per (1,000 population) | 54 | 4.5 | 75 | 6.3 | -28.0% | |
| Total Detections (% rate) | 8 | 14.8% | 16 | 21.3% | 14.8% | |

Domestic Incidents

DYFED POWYS POLICE

SPI 8A TARGET - 80% OF INCIDENTS (WITH A POWER OF ARREST) LEADING TO ARREST
LOCAL TARGET - 30% OF TOTAL INCIDENTS INVOLVING REPEAT VICTIMS

Please note figures provided here are reliant on force systems being updated and remain **provisional only**. For the latest detailed information please contact your local Public Protection Unit (PPU) for further details.



Section & Divisional Summary – March 2006 YTD

| Section | Incidents | POA Arrests (Apr-Dec 05 only) | | | Total Arrest Rate | | Sanction Detections | | | Repeat Victims | Apr-Mar 2005 (SPLY) | |
|------------------------|-------------|-------------------------------|---------------------------|--------------|-------------------|-------------------|---------------------|---------------------|----------------------|----------------|---------------------------|-----------------|
| | | Apr-Dec Power Of Arrest | Apr-Dec Arrests where POA | % POA | Arrests | Total Arrest Rate | Crimes | Sanction Detections | % Sanction Detection | | % Repeats (12mths data)** | Total Incidents |
| Ammanford (AA) | 191 | 53 | 42 | 79.2% | 60 | 31.4% | 78 | 42 | 53.8% | 16.8% | 260 | -26.5% |
| Carmarthen (AC) | 297 | 104 | 91 | 87.5% | 117 | 39.4% | 125 | 58 | 46.4% | 15.2% | 317 | -6.3% |
| Llanelli (AL) | 778 | 271 | 209 | 77.1% | 278 | 35.7% | 360 | 181 | 50.3% | 23.9% | 806 | -3.5% |
| Towy Gwendraeth (AT) | 230 | 76 | 63 | 82.9% | 84 | 36.5% | 85 | 54 | 63.5% | 18.3% | 254 | -9.4% |
| Carmarthenshire | 1496 | 504 | 405 | 80.4% | 539 | 36.0% | 648 | 335 | 51.7% | 20.4% | 1637 | -8.6% |
| Aberystwyth (BA) | 223 | 79 | 76 | 96.2% | 101 | 45.3% | 93 | 53 | 57.0% | 17.9% | 175 | 27.4% |
| Aberaeron (BB) | 29 | 15 | 12 | 80.0% | 14 | 48.3% | 15 | 7 | 46.7% | 13.8% | 44 | -34.1% |
| Cardigan (BC) | 94 | 36 | 28 | 77.8% | 36 | 38.3% | 49 | 23 | 46.9% | 18.1% | 105 | -10.5% |
| Lampeter (BL) | 46 | 17 | 15 | 88.2% | 24 | 52.2% | 26 | 15 | 57.7% | 15.2% | 27 | 70.4% |
| Ceredigion | 392 | 147 | 131 | 89.1% | 175 | 44.6% | 183 | 98 | 53.6% | 17.3% | 351 | 11.7% |
| Fishguard (CF) | 174 | 55 | 48 | 87.3% | 67 | 38.5% | 77 | 42 | 54.5% | 28.2% | 135 | 28.9% |
| Haverfordwest (CH) | 275 | 95 | 71 | 74.7% | 94 | 34.2% | 114 | 43 | 37.7% | 34.2% | 284 | -3.2% |
| Milford Haven (CM) | 291 | 88 | 66 | 75.0% | 89 | 30.6% | 104 | 55 | 52.9% | 31.6% | 246 | 18.3% |
| Pembroke Dock (CP) | 345 | 119 | 93 | 78.2% | 135 | 39.1% | 121 | 55 | 45.5% | 28.1% | 350 | -1.4% |
| Tenby (CT) | 151 | 59 | 50 | 84.7% | 65 | 43.0% | 64 | 36 | 56.3% | 21.2% | 157 | -3.8% |
| Pembrokeshire | 1236 | 416 | 328 | 78.8% | 450 | 36.4% | 480 | 231 | 48.1% | 29.4% | 1172 | 5.5% |
| Brecon (DB) | 160 | 57 | 57 | 100.0% | 73 | 45.6% | 76 | 34 | 44.7% | 20.0% | 184 | -13.0% |
| Llandrindod Wells (DL) | 130 | 49 | 45 | 91.8% | 60 | 46.2% | 70 | 39 | 55.7% | 30.0% | 145 | -10.3% |
| Newtown (DN) | 256 | 89 | 83 | 93.3% | 104 | 40.6% | 129 | 65 | 50.4% | 20.7% | 237 | 8.0% |
| Welshpool (DW) | 125 | 36 | 34 | 94.4% | 50 | 40.0% | 69 | 42 | 60.9% | 22.4% | 131 | -4.6% |
| Ystradgynlais (DY) | 100 | 37 | 35 | 94.6% | 40 | 40.0% | 46 | 25 | 54.3% | 20.0% | 103 | -2.9% |
| Powys | 771 | 268 | 254 | 94.8% | 327 | 42.4% | 390 | 205 | 52.6% | 22.3% | 800 | -3.6% |
| Force | 3895 | 1335 | 1118 | 83.7% | 1491 | 38.3% | 1701 | 869 | 51.1% | 23.3% | 3960 | -1.6% |

Source: LCS Recorded Domestic Incident Details (all data extracted 07/04/06) POA Data has been revised to take account of updated records **ONLY** for the period Apr-Dec 2005.

** Repeat Victims performance is based on 12-months total incident data and not fiscal year-to-date and includes **all victims** – not only those involving both the same victim **and** offender.

The introduction of the Serious Organised Crime and Police Act 2005 (SOCPA) on 01/01/06 has resulted in the withdrawal of the term 'power of arrest'. As a consequence of this it has ceased to be a discrete performance measure. The data illustrated here for the period Apr-Dec 2005 represents the recorded end of year performance for 2005/06.

User Satisfaction

CITIZEN FOCUS PERFORMANCE ASSESSMENT DOMAIN

DECEMBER 2005 DATA - LATEST

These measures constitute the citizen focus domain in the police performance assessment framework. All victims of crimes (domestic burglary, violent crime and vehicle crime only) or those involved in road traffic collisions are surveyed within a short period of coming into contact with the force to gain their views on the service they received.

For performance assessment purposes, these measurements of user satisfaction are grouped into five main themes, which are:

- SPI 1a – Satisfaction with making contact with the police: 'Ease of Contact'
- SPI 1b – Satisfaction with the action taken by the police: 'Actions'
- SPI 1c – Satisfaction with being kept informed of progress: 'Follow-Up'
- SPI 1d – Satisfaction with their treatment by staff: 'Treatment'
- SPI 1e – Satisfaction with the overall service provided: 'Whole Experience'

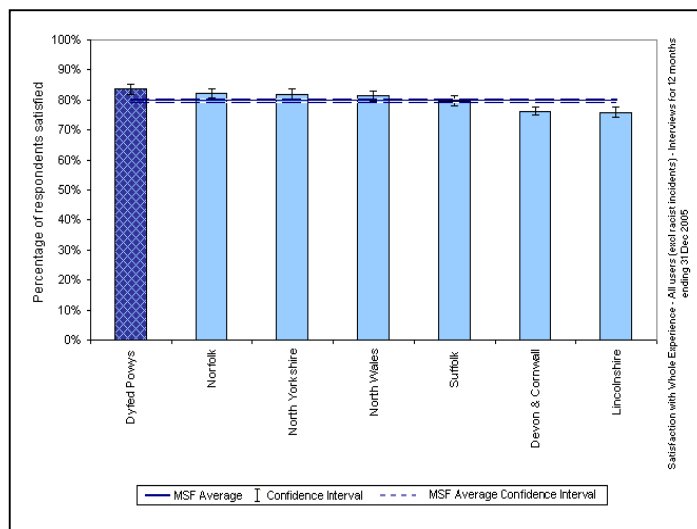
Force User Satisfaction – Year Ending December 2005

Comparative User Satisfaction

| Satisfaction with... | DPP Force | MSF Average | Difference |
|----------------------|-----------|-------------|------------|
| Ease of Contact | 91.8% | 89.6% | 2.2% |
| Actions | 83.0% | 77.3% | 5.7% |
| Follow-up | 70.3% | 63.2% | 7.1% |
| Treatment | 91.1% | 89.9% | 1.2% |
| Whole experience | 83.6% | 79.8% | 3.8% |

Source: Home Office / Iquanta, March 2006

MSF – Comparative Force Performance - Whole Experience



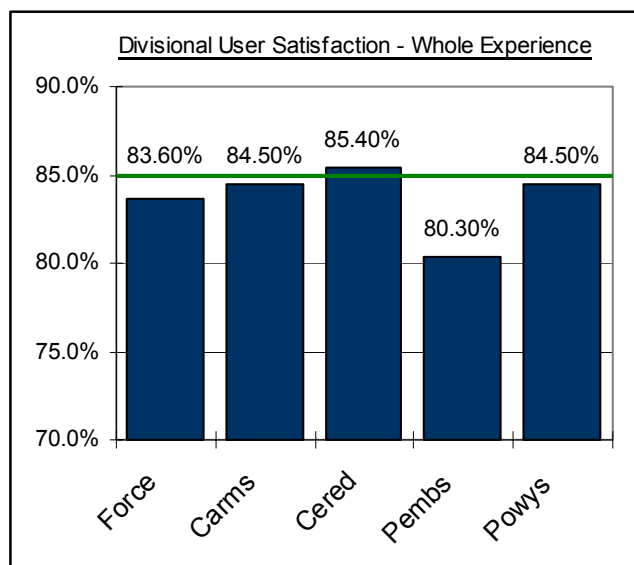
Source: Home Office / Iquanta, March 2006

Divisional User Satisfaction – Year Ending September 2005 (Jan 05 – Dec 05)

BCU user Satisfaction Summary

| Year Ending Sept 2005 | % Satisfied (Very, Completely and Fairly Satisfied) | | | | | Target |
|-----------------------|---|-------|-------|-------|-------|--------|
| | Force | Carms | Cered | Pembs | Powys | |
| Ease of Contact | 91.8% | 92.0% | 94.8% | 89.7% | 92.0% | 92% |
| Actions | 83.0% | 84.3% | 83.0% | 80.5% | 83.7% | 84% |
| Follow-up | 70.3% | 71.8% | 72.6% | 67.6% | 70.1% | 70% |
| Treatment | 91.1% | 91.1% | 94.0% | 89.4% | 91.3% | 92% |
| Whole experience | 83.6% | 84.5% | 85.4% | 80.3% | 84.5% | 85% |

Source: Home Office / Iquanta, March 2006

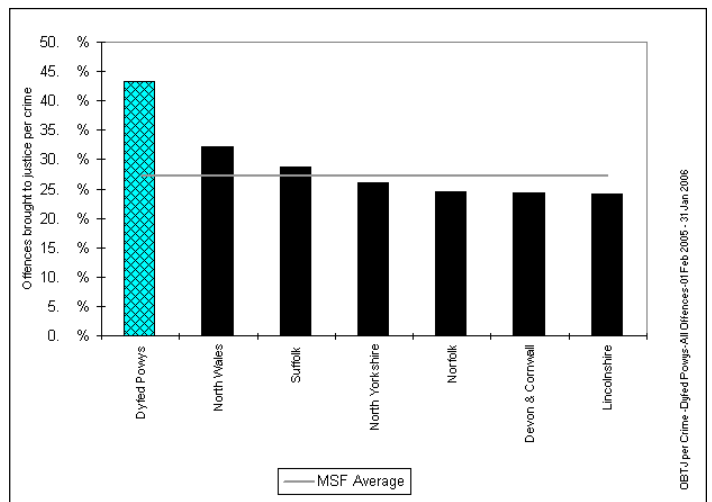
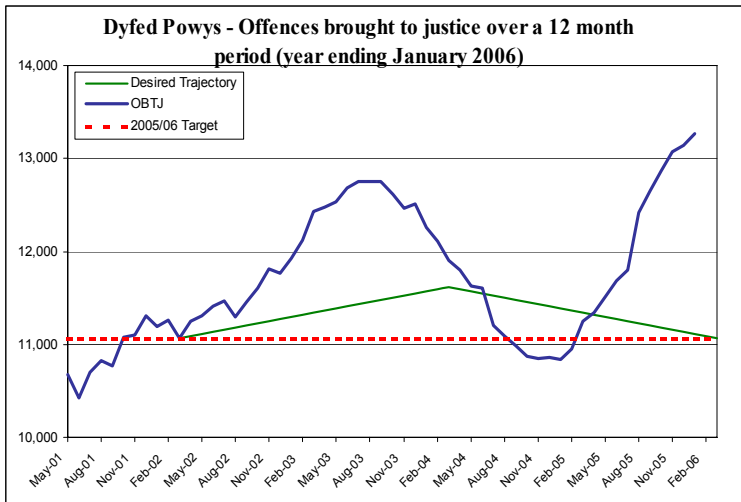


Additional comparative data is available on a quarterly basis. For further information on this or Iquanta contact Corporate Services (ext 6654).

Narrowing the Justice Gap - OFFENCES BROUGHT TO JUSTICE & SANCTION DETECTIONS

TARGET 2005/06 : 11,068 total OBTJ (Offences Brought to Justice)

Total Offences Brought to Justice (OBTJ) – Force & MSF Comparisons



| Offences brought to justice – 12 monthly data | TIC | PND | Formal Warnings | Cautions | Convictions | OBTJ |
|---|------------|------------|-----------------|------------|-------------|------------|
| Baseline: Apr 01 – Mar 02 | 420 | - | - | 3,698 | 6,900 | 11,068 |
| Latest Annual Data : March 05 – February 06 | 461 | 736 | 1,257 | 4,537 | 6,272 | 13,263 |
| Change | +10% | - | - | +22% | -9% | +20% |
| 2005/06 Force Target (0%- 11,068 OBTJ) | YES | n/a | YES | YES | NO | YES |

Divisional Contribution Toward OBTJ Volumes – Approximate Latest

Please note this data is provided as a **guide only** - it is provided here for information.

| Approx OBTJ YTD | Jan-06 | Target** | Diff from Target |
|------------------------|--------|----------|------------------|
| Carmarthenshire | 3960 | 3312 | 19.6% |
| Ceredigion | 1637 | 1447 | 13.1% |
| Pembrokeshire | 2802 | 2451 | 14.3% |
| Powys | 2720 | 2014 | 35.1% |
| Force | 11119 | 9224 | 19.1% |

Target Pro-Rata Based on 6 months performance

** - This is the target profile required to attain the end of year target of 11,068 OBTJ. (The divisional target breakdown is based on mirroring 2004/05 contribution toward total force sanction detections).

Sanction Detection Volume Performance YTD – Current Clear-Up Breakdown (Annual % Change)

The current volume of sanction detections (March 06 YTD) is up 16% on the same period last year to stand at 10,932 (up 1,542 from 9,390*).

| Area – March YTD | Charged | Summons | Cautioned | TIC | PND | F. Warning for Cannabis* | Total Sanction Dets |
|------------------------|------------|------------|-------------|------------|----------------|--------------------------|---------------------|
| Carmarthenshire | 2033 (+5%) | 67 (-30%) | 1347 (+45%) | 143 (-31%) | 266 (134 SPLY) | 365 (-22%) | 4221 (+12%) |
| Ceredigion | 847 (+4%) | 65 (+14%) | 626 (+11%) | 46 (-6%) | 52 (27 SPLY) | 117 (-26%) | 1753 (+5%) |
| Pembrokeshire | 1274 (+2%) | 69 (+3%) | 1204 (+18%) | 163 (+58%) | 184 (119 SPLY) | 166 (-16%) | 3060 (+11%) |
| Powys | 1251 (+2%) | 124 (+15%) | 1022 (+33%) | 108 (+57%) | 268 (65 SPLY) | 151 (+66%) | 2924 (+25%) |
| Force | 5405 (+3%) | 325 (-1%) | 4199 (+28%) | 460 (+8%) | 770 (343 SPLY) | 799 (-13%) | 11958 (+14%) |

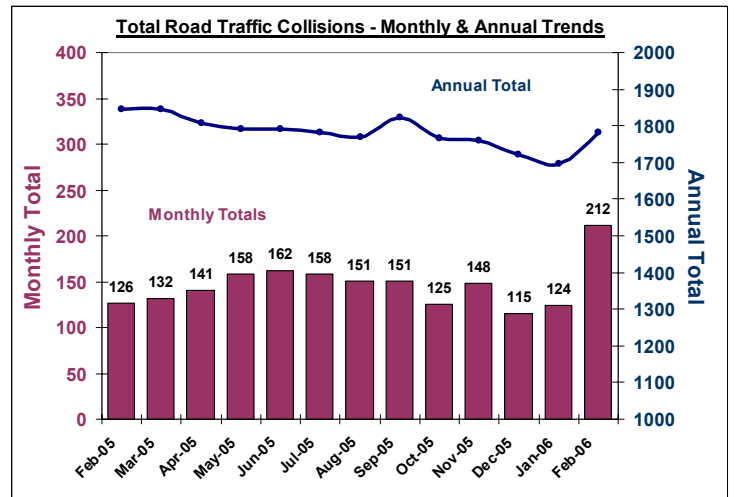
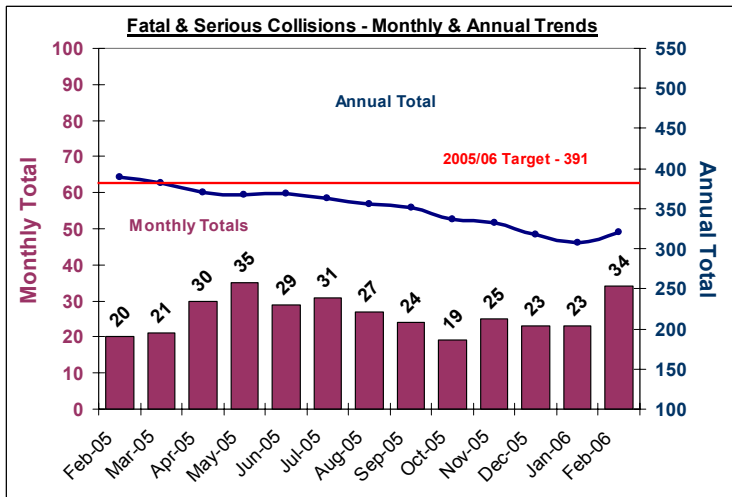
* - SPLY Data Approximate

Road Traffic Collisions

February Monthly Data Latest available

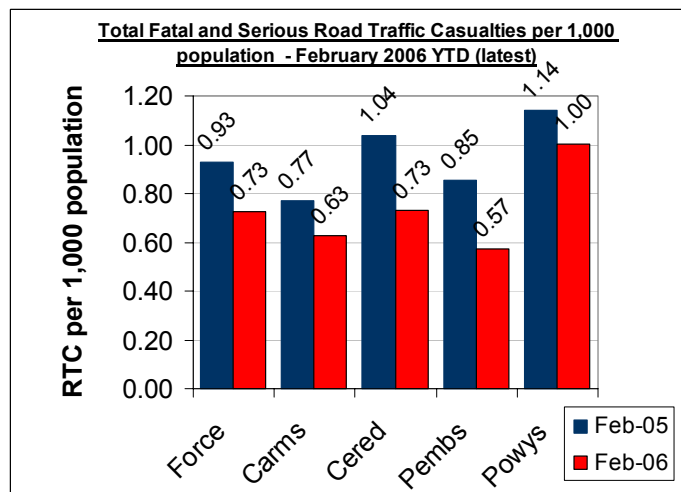
TARGET 2005/06 : 391 FATAL AND SERIOUS COLLISIONS & CASUALTIES (0.8 PER 1,000 POPULATION)

Road Traffic Collisions – Monthly & Annual Trends (February 06 - latest data)



| Performance YTD (February 2006 YTD - latest) | FORCE | Carms | Cered | Pembs | Powys |
|--|-------------|-------------|-------------|-------------|-------------|
| Fatal Road Collisions YTD | 43 | 18 | 2 | 7 | 16 |
| Serious & Fatal Road Collisions YTD | 303 | 94 | 44 | 56 | 109 |
| Indicator - Per 1,000 population | 0.60 | 0.53 | 0.56 | 0.48 | 0.83 |
| On-Target (0.8 end of year – 0.73 pro-rata) | YES | YES | YES | YES | NO |
| Fatal (SPLY) | 41 | 14 | 6 | 6 | 18 |
| Serious & Fatal (SPLY) | 376 | 115 | 76 | 84 | 122 |

Road Traffic Casualties – 2010 Target Progress



| February 2006 YTD (latest) | Force | Carms | Cered | Pembs | Powys |
|---|------------|------------|------------|------------|------------|
| Number of people killed or seriously injured casualties | 366 | 111 | 57 | 67 | 131 |
| At 2010 Target Level* | YES | YES | YES | YES | YES |
| Number of Children (<=15 yrs) killed or seriously injured | 40 | 17 | 6 | 7 | 10 |
| At 2010 Target Level* | YES | YES | YES | YES | YES |
| Number of persons with slight injuries | 2033 | 706 | 360 | 458 | 509 |
| At 2010 Target Level* | NO | NO | NO | NO | NO |

* 2010 Targets Established with Roads Policing Strategy, Operations Dept & National Road Policing Targets. Progress towards Pro-Rata year-end 2010 target illustrated here

Source: MAAP RTC Database 10/04/06

Road Policing Performance

SELECTED MEASURES OF ROADS POLICING ACTIVITY 2005/06

These measures constitute a range of selected measures to illustrate performance with respect to roads policing. The measures are:

- Roads Policing Related Offences by Type
- BCU Breakdown of ANPR Performance
- Project Laser – Most Similar Forces Comparisons for ANPR
- S.59 Seizure of Vehicles Used in an Anti-Social Manner

Please note that performance data illustrated here is provisional and will develop further over the coming months.

Roads Policing – CJU Measures

| Data for the period : Dec 05 & Jan 06 Only | Force | SPLY | Change | % Change |
|--|-------|------|--------|----------|
| No. of speeding cases (not including camera cases) | 32 | - | - | - |
| No. of speed camera cases | 240 | - | - | - |
| No. of VDRS issued | 1508 | - | - | - |
| No. of seatbelt offences | 6 | - | - | - |
| No. of due care (persons) | 893 | - | - | - |
| No. of disqualified driving offences | 32 | - | - | - |
| No. of drink drive offences | 155 | - | - | - |
| No. of tachograph offences | 34 | - | - | - |
| No. of mobile phone offences | 1 | - | - | - |

Source: CJU DPP - Data only for December 2005 and January 2006

BCU Breakdown of ANPR Performance

| Covering the period: 27/02/06 – 07/05/2006 | Force* | Carms | Cered | Pembs | Powys |
|---|--------|-------|-------|-------|-------|
| ANPR Reads | 61552 | 23408 | N/A | 7418 | 30726 |
| ANPR Hits | 2203 | 535 | N/A | 271 | 1397 |
| Arrests | 55 | 2 | N/A | 1 | 52 |
| Total No. Operational Hours | 694.5 | 94 | N/A | 119 | 481.5 |
| % Hits from Reads | 3.6% | 2.3% | N/A | 3.6% | 4.5% |
| Hits per Operational Hour | 3.2 | 5.7 | N/A | 2.3 | 2.9 |

* - Force totals exclude Ceredigion activity (tbc)

Project Laser – ANPR Performance Comparisons

| April 2005 – February 2006 YTD | Dyfed Powys | MSF Average |
|-------------------------------------|-------------|-------------|
| Active Hours | 6,865 | 4,102 |
| Dedicated Officer Hours | 6,975 | 7,065 |
| Hits | 9,803 | 21,640 |
| Reads | 407,061 | 630,097 |
| % Hits from Reads | 2.4% | 2.8% |
| No. Hits per Dedicated Officer Hour | 1.4 | 4.2 |
| No. Reads per 1,000 population | 808 | 1012 |

Source: Project Laser 3 ANPR Report

S.59 Seizure of Vehicles Used in an Anti-Social Manner

| April 2005 – March 2006 | Number of Incidents YTD | | | | |
|-------------------------|-------------------------|-------|-------|---------|-------|
| Vehicles ... | Force | Carms | Cered | Pembs | Powys |
| Seized (+ SPLY) | 8 (4) | 1 (1) | 1 (1) | 5 (1) | 1 (1) |
| Warned (+ SPLY) | 36 (24) | 4 (1) | 8 (6) | 19 (15) | 5 (2) |

Source: STORM Command & Control March 2006

PPAF Statutory Performance Indicator Summary

Reported Quarterly

HOME OFFICE POLICE PERFORMANCE ASSESSMENT FRAMEWORK MEASURES

This Data is Updated Quarterly – Latest: April – December 2005 (except where stated).

| Activity | SPI Number | Indicator Description | Apr-Dec 2004 Performance | Apr-Dec 2005 Performance | Change | 2005/06 End of Year Target |
|---|------------|--|---------------------------------|---------------------------------|------------------------------|---------------------------------|
| User Satisfaction Measures | 1a | Satisfaction of victims of domestic burglary, violent crime, vehicle crime and road traffic collisions with respect to - a) making contact with the Police | 91% | 91.0% | 0.0% | 92% |
| | 1b | b) action taken by the Police | 83% | 83.8% | 0.8% | 84% |
| | 1c | c) Being kept informed of progress | 71% | 71.7% | 0.7% | 70% |
| | 1d | d) Their treatment by staff | 91% | 91.2% | 0.2% | 92% |
| | 1e | e) the overall service provided | 84% | 84.0% | 0.0% | 85% |
| Confidence | 2a^ | Using the BCS, the % of people who think their local police do a good job | NEW | NEW | - | NEW |
| Fairness and Equality Measures | 3a | Satisfaction of victims of racist incidents with respect to the overall service provided | 82.0% | 88.2% | 6.2% | 85% |
| | 3b | From SPI 1(e), comparison of satisfaction for white users and users from visible minority ethnic groups with respect to the overall service provided. | White - 84.2% Ethnic - 70.0% | White - 84.0% Ethnic - 83.3% | White -1.9% Ethnic +1.5% | White - 85% Ethnic - 72% |
| | 3c(i) | (i) % of PACE stop/searches which lead to arrest by ethnicity | White - 17.2% Ethnic - 27.2% | White - 14.3% Ethnic - 15.5% | White -2.9% Ethnic -11.7% | White - 20% Ethnic - 20% |
| | 3d | Comparison of percentage detected of violence against the person offences by ethnicity of the victim (sanction detections) | White - 59.9% Ethnic - 63.7% | White - 42.1% Ethnic - 37.6% | White -18% Ethnic -26% | White - 31% Ethnic - 31% |
| | 3e | Proportion of police recruits (ethnic) compared to the proportion of people from minority ethnic groups in the economically active population. | (No ethnic recruits) | (No ethnic recruits) | - | NEW |
| | 3f | Ratio of officers from minority ethnic groups resigning to all officer resignations | 00:05 | 00:05 | NEW | NEW |
| | 3g | % of female police officers compared to overall Force strength. | 18.9% | 20.1% | 1.2% | 19% |
| Measures of Crime Levels | 4a^ | Using the British Crime Survey (a) the risk of personal crime; and | 4% | 8% | 4.0% | 8% |
| | 4b^ | (b) the risk of household crime. | 12% | 11% | -1.0% | 11% |
| | 5a | (a) Domestic Burglaries per 1,000 households. | 4.07 (839 crimes) | 3.05 (620 crimes) | -1.02 (-219 crimes) | 5.06 (1042 crimes) |
| | 5b | (b) Violent crime per 1,000 population. | 13.86 (6983 crimes) | 12.88 (6489 crimes) | -0.98 (494 crimes) | 17.60 (8593 crimes) |
| | 5c | (c) Robberies per 1,000 population. | 0.063 (32 crimes) | 0.062 (31 crimes) | -0.001 (-1 crime) | 0.1 (48 crimes) |
| | 5d | (d) Vehicle crime per 1,000 population. | 3.69 (1861 crimes) | 2.91 (1464 crimes) | -0.78 (-397 crimes) | 4.77 (2331 crimes) |
| | 5e | (e) Life threatening crime and gun crime per 1,000 population. | 0.18 (91 crimes) | 0.22 (111 crimes) | +0.04 (+20 crimes) | 0.28 |
| Offences Brought to Justice Measures (OBTJ) | 6a | Number of notifiable/recorded offences resulting in convictions, caution or taken into consideration at court | 4,481 | 5,598 | +1117 OBTJ (+24.9%) | 11,068 |
| | 6b | % of notifiable/recorded offences resulting in convictions, caution or taken into consideration at court | 30.4% | 40.1% | 9.7% | NEW |
| Detection Measure | 7a | % of notifiable/recorded offences resulting in charge, summons, caution or taken into consideration at court ('sanction detections') | 30.1% | 37.9% | 7.8% | 31% |
| Domestic Violence Measures | 8a | Percentage of domestic violence incidents with a power of arrest where an arrest was made relating to the incident. | 80.6% (906 arrests) | 84.5% (1119 arrests) | +213 arrests | 80% |
| Traffic Measures | 9a(i) | (i) Number of people killed in under 30 days or seriously injured in road traffic collisions | 323 fatal or serious casualties | 299 fatal or serious casualties | -24 casualties | 391 fatal or serious casualties |
| | 9a(ii) | (ii) Number of persons killed or seriously injured in road traffic collisions per 100million vehicle kilometres travelled. | 6.58 | 6.09 | -0.49 | 8.13 |
| Quality of life Measures | 10a^ | Using the British Crime Survey a) fear of crime | 11% | 9% | -2% | 10% |
| | 10b^ | Perceptions of anti-social behaviour; and | NEW | NEW | NEW | NEW |
| | 10c^ | Perceptions of local drug use / drug dealing | NEW | NEW | NEW | NEW |
| Resource Use Measures | 11a^ | Percentage of police officer time spent on frontline duties | 65.4% | - | - | 68.5% |
| | 12a | Delivery of cashable and non-cashable efficiency targets | NEW | NEW | NEW | NEW |
| | 13a* | Average number of working hours lost due to sickness per police officer. | 71.0 hours | 60.5 hours | -15% | 92.8 hours |
| | 13b* | Average number of working hours lost due to sickness by police staff. | 69.3 hours | 50.5 hours | -27% | 80.7 hours |

* April-Sept Data : Latest Available

*** - April & May Data only Latest Available

^ - End of Year Data 2004/05 : Latest Available