



# Heddlu Dyfed-Powys Police

## CRIME TRENDS UPDATE April 2006

### Contents:

Headline Statistics	2
Most Frequent Recorded Offences Profile	3
Recorded Crimes and Detection Rates	4
Domestic Burglaries and Detection Rates	5
Other Burglary and Detection Rates	6
Violent Crime and Detection Rates	7
Vehicle Crime and Detection Rates	8
Criminal Damage and Detection Rates	9
Drugs Statistics and Detection Rates	10
Section Level Sanction Detection Summary	11
Divisional Contribution to Targets	12
Domestic Incidents	16
User Satisfaction	17
Narrowing the Justice Gap	18
Road Traffic Collisions	19
Roads Policing Performance	20
Local Policing Domain	21
PPAF Statutory Performance Indicator Summary	22

Heddlu Dyfed Powys Police: Corporate Services

## Recorded Crime:

- Total Recorded Crime is up by 5% (+132 crimes) compared to the same period last year (SPLY) to stand at 2,821 crimes. The monthly figure for April 2006 stands at 2,821, an increase of 5% (+132 offences) on the same month in 2005, and a 27% (+604 offences) increase on the preceding month March 2006.
- Recorded detection performance has a total detection rate for the force at 40% (1,122 total detections) compared with 35% the previous year. The volume of total detections has increased by 18% (+172 detections). The sanction detection rate stands at 38% - this is consistent with the target rate of 31% (and compared with 31% recorded last year). The volume of sanction detections has increased by 258 or 31%.

## Domestic Burglary:

- Total Domestic Burglary offences are up by 19% (+10 crimes) compared to the same period last year (SPLY) to stand at 62 crimes. The monthly figure for April 2006 stands at 62, an increase of 19% (+10 offences) on the same month in 2005, but remains the same as the preceding month March 2006.
- Recorded detection performance remains consistent with last year, with the total detection rate for the force at 34% (21 detections) compared with 37% the previous year. The volume of total detections has increased by 11% (+2). The sanction detection rate stands at 34% (down from 35% last year) with the volume of sanction detections increasing by 17% (+2).

## Violent Crimes:

- Total Violent crime offences are up by 17% (+121 crimes) compared to the same period last year (SPLY) to stand at 829 crimes. The monthly figure for April 2006 stands at 829, a rise of 17% (+121 offences) on the same month in 2005, and a 51% (+278 offences) increase on the preceding month March 2006.
- Recorded detection performance stands at a total detection rate for the force of 53% (439 detections) up from 49% last year. The volume of total detections has increased by 4% (+93) over this period. Furthermore the sanction detection rate stands at 51% (compared with 40% last year) with the volume recorded up by 51% (+142 sanction detections).

## Vehicle Crime:

- Total Vehicle crime is down by 17% (-9 crimes) compared to the same period last year (SPLY) to stand at 152 crimes. The monthly figure for April 2006 stands at 152, a fall of 17% (-9 offences) on the same month in 2005, but a 13% increase (+17 offences) on the preceding month March 2006.
- Recorded total detection stands at 24% (37 detections) up from 9% the previous year. The volume of total detections has increased by 147% (+22) over this period. The sanction detection rate stands at 24% (compared with 8% last year) with the volume up on the previous year (+23 sanction detections or 177%).

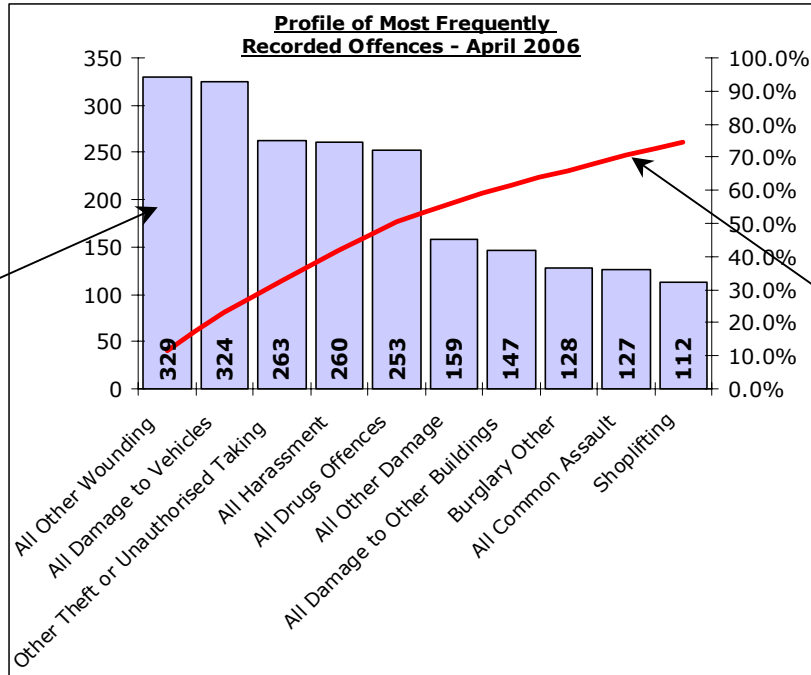
## Criminal Damage:

- Total Criminal Damage has increased by 12% (+78 crimes) compared to the same period last year (SPLY) to stand at 740 (excl Arson & Threat to Commit CD). The monthly figure for April 2006 stands at 740, a rise of 12% (+78 offences) on the same month in 2005, and an increase of 37% (+199) on the previous month March 2006.
- Recorded detection performance stands at a total detection rate for the force of 20% (148 detections) up from 19% last year. The volume of total detections has increased by 16% (+20) over this period. The sanction detection rate stands at 20% (compared with 15% last year) with the volume up a notable 38% over this period (+39 sanction detections).

# Most Frequent Recorded Offences Profile

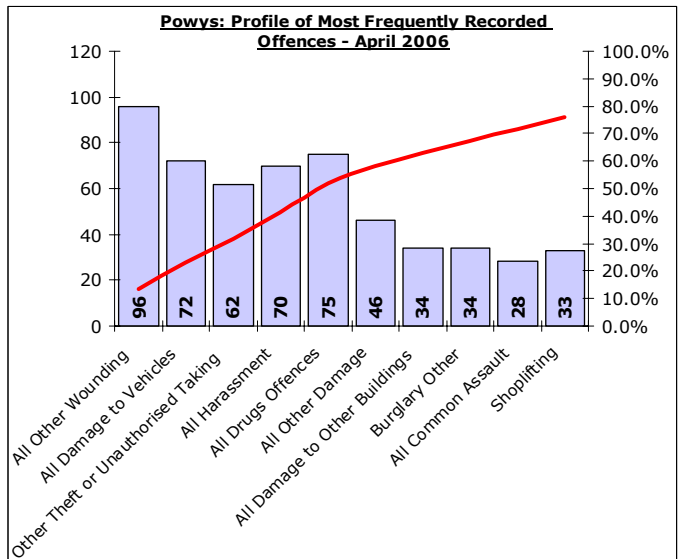
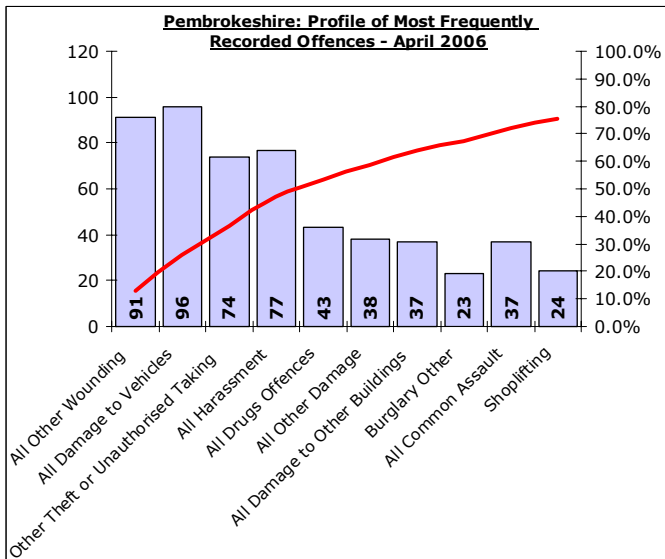
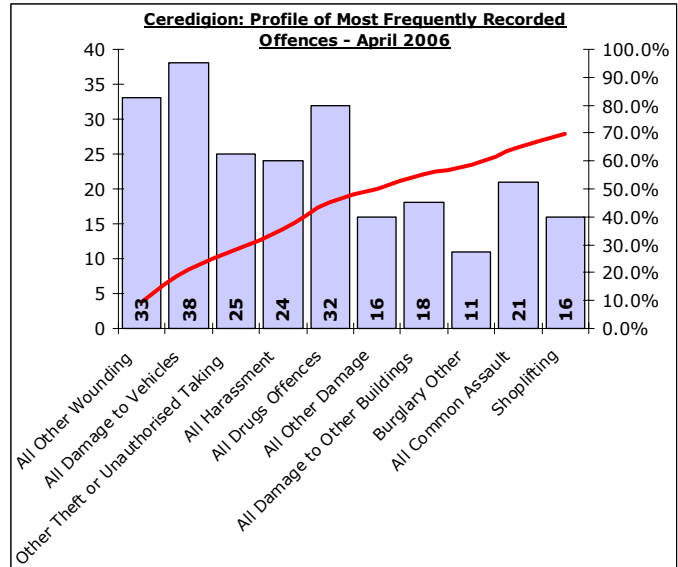
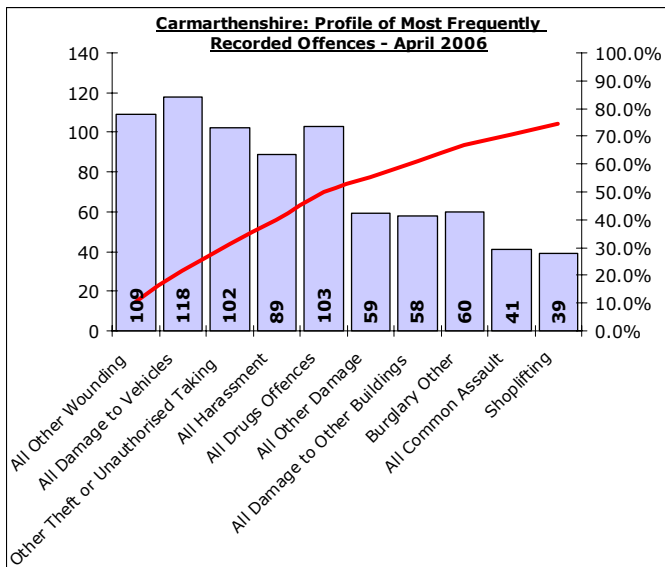
DYFED-POWYS POLICE

April 2006 YTD (Note : Divisional profiles are in the same sequence as forces' most frequent categories – for comparison)



Recorded offences in each category in order of volume.  
  
(Note these can include a number of sub-categories)

The cumulative contribution of these offence categories toward the total volume of offences recorded.

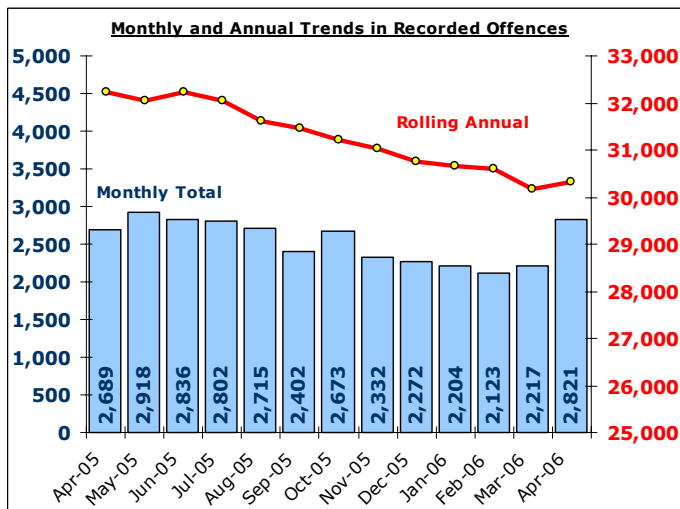


# Total Recorded Crime

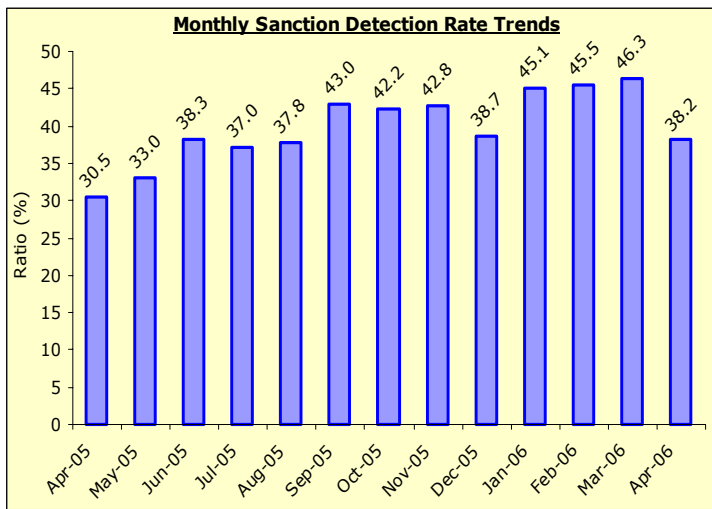
DYFED-POWYS POLICE

**TARGET 2006/07 : NO REDUCTION TARGET – 40% SANCTION DETECTION RATE**

## Recorded Crime Levels – April 2006

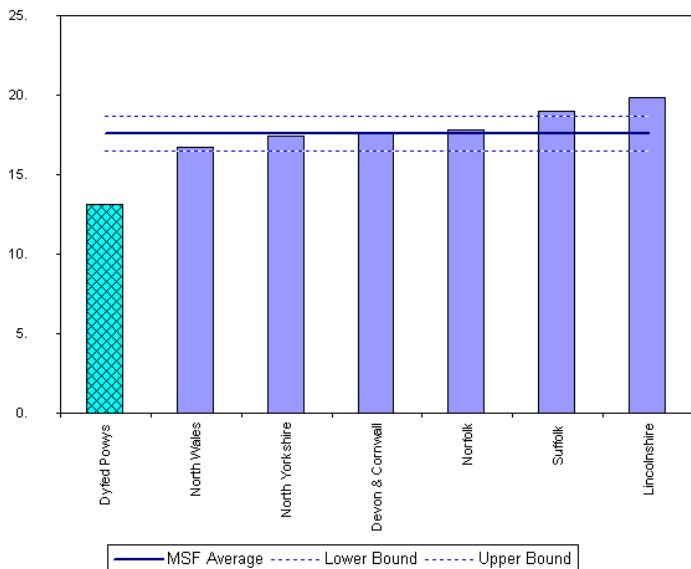


## Monthly Sanction Detection Rates – April 2006

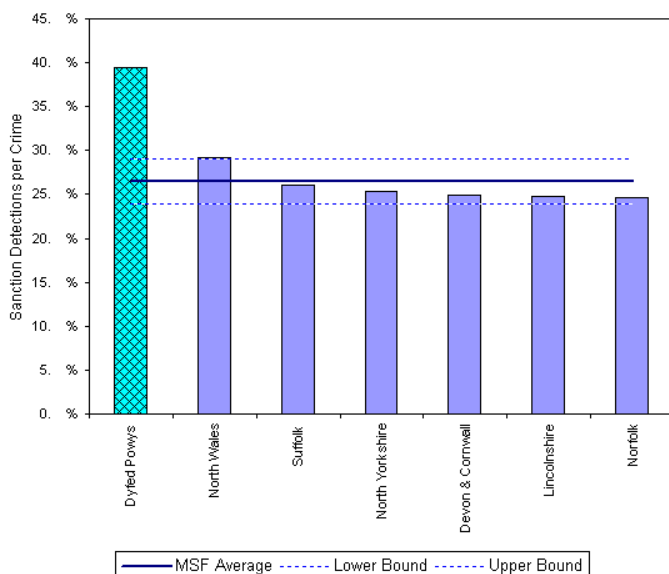


Total Recorded Crimes	April 2006 YTD			Detection Rates YTD		Annual Trends - SPLY		
	Crimes	Sanction Dets	Total Dets	Sanction %	Total %	Crimes SPLY	Change	% Change
<b>FORCE</b>	<b>2,821</b>	<b>1,079</b>	<b>1,122</b>	<b>38.2%</b>	<b>39.8%</b>	<b>2,689</b>	<b>+ 132</b>	<b>+ 4.9%</b>
<b>CARMS</b>	<b>1,047</b>	<b>419</b>	<b>435</b>	<b>40.0%</b>	<b>41.5%</b>	<b>1,027</b>	<b>+ 20</b>	<b>+ 1.9%</b>
<b>CERED</b>	<b>336</b>	<b>141</b>	<b>148</b>	<b>42.0%</b>	<b>44.0%</b>	<b>350</b>	<b>- 14</b>	<b>- 4.0%</b>
<b>PEMBS</b>	<b>714</b>	<b>255</b>	<b>271</b>	<b>35.7%</b>	<b>38.0%</b>	<b>685</b>	<b>+ 29</b>	<b>+ 4.2%</b>
<b>POWYS</b>	<b>724</b>	<b>264</b>	<b>268</b>	<b>36.5%</b>	<b>37.0%</b>	<b>627</b>	<b>+ 97</b>	<b>+ 15.5%</b>

## MSF – Crimes per 1000 Residents 01 December 2005 – 28 February 2006 (latest quarter)



## MSF – Sanction detections (annual): 01 April 2005 – 28 February 2006

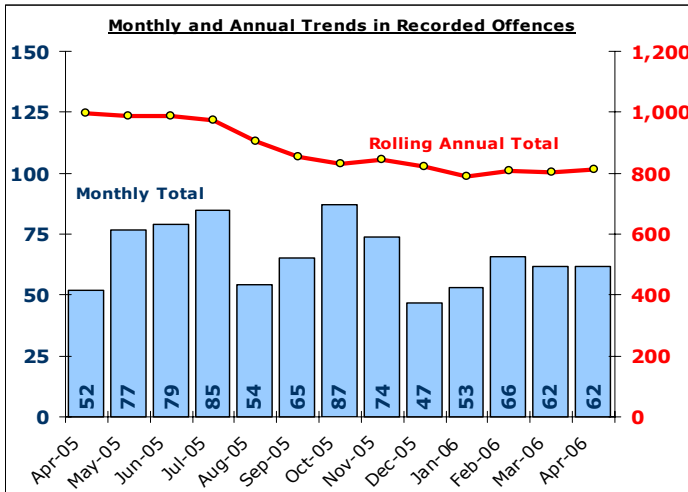


# Domestic Burglary

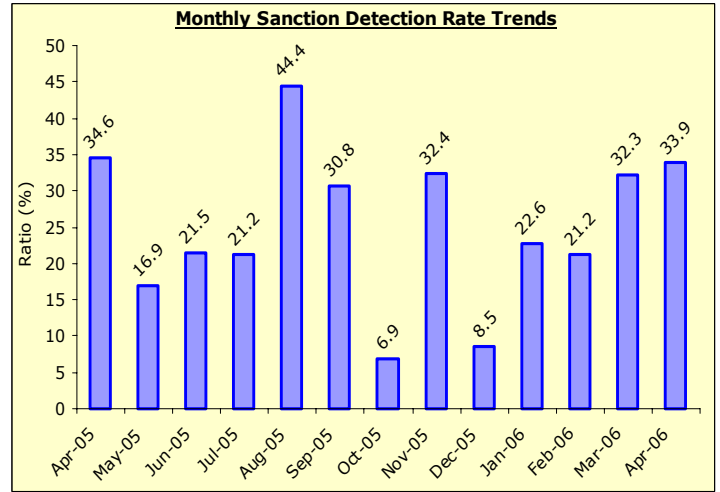
DYFED-POWYS POLICE

**TARGET 2006/07 : 2% Increase in offences & 23% total detection rate**

## Recorded Crime Levels – April 2006

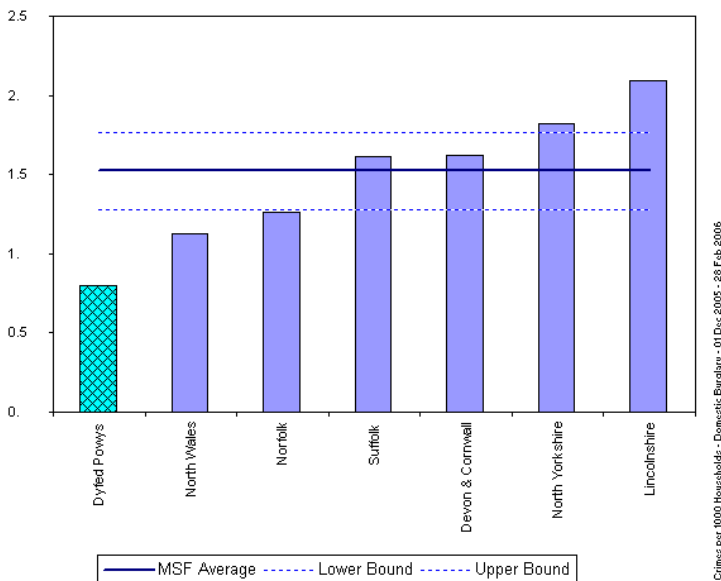


## Monthly Sanction Detection Rates – April 2006

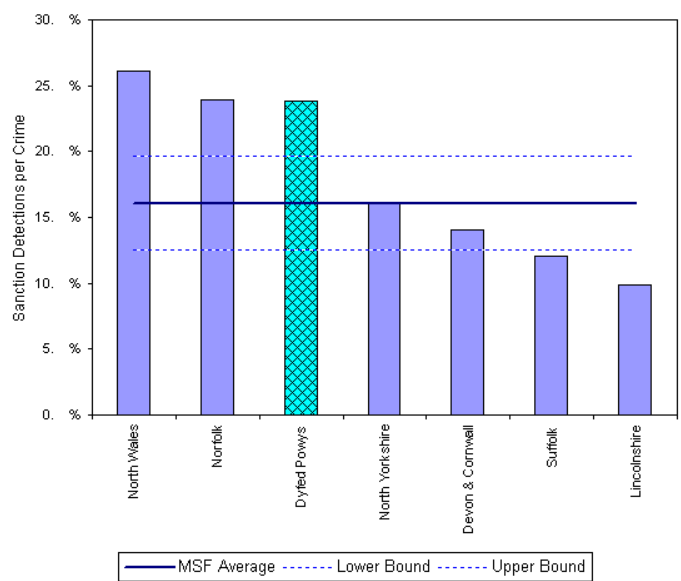


Total Domestic Burglary	April 2006 YTD			Detection Rates YTD		Annual Trends - SPLY		
	Crimes	Sanction Dets	Total Dets	Sanction %	Total %	Crimes SPLY	Change	% Change
<b>FORCE</b>	<b>62</b>	<b>21</b>	<b>21</b>	<b>33.9%</b>	<b>33.9%</b>	<b>52</b>	<b>+ 10</b>	<b>+ 19.2%</b>
<b>CARMS</b>	<b>23</b>	<b>13</b>	<b>13</b>	<b>56.5%</b>	<b>56.5%</b>	<b>20</b>	<b>+ 3</b>	<b>+ 15.0%</b>
<b>CERED</b>	<b>9</b>	<b>1</b>	<b>1</b>	<b>11.1%</b>	<b>11.1%</b>	<b>3</b>	<b>+ 6</b>	<b>+ 200.0%</b>
<b>PEMBS</b>	<b>15</b>	<b>3</b>	<b>3</b>	<b>20.0%</b>	<b>20.0%</b>	<b>14</b>	<b>+ 1</b>	<b>+ 7.1%</b>
<b>POWYS</b>	<b>15</b>	<b>4</b>	<b>4</b>	<b>26.7%</b>	<b>26.7%</b>	<b>15</b>	<b>=</b>	<b>=</b>

## MSF – Crimes per 1000 Residents 01 December 2005 – 28 February 2006 (latest quarter)



## MSF – Sanction detections (annual): 01 April 2005 – 28 February 2006

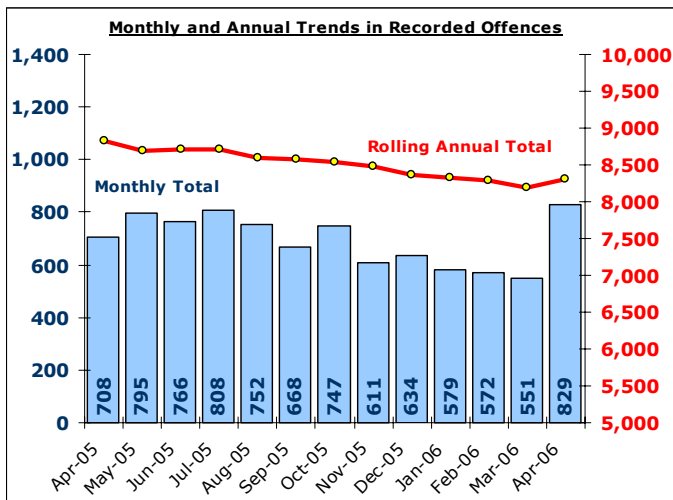


# Other Burglary

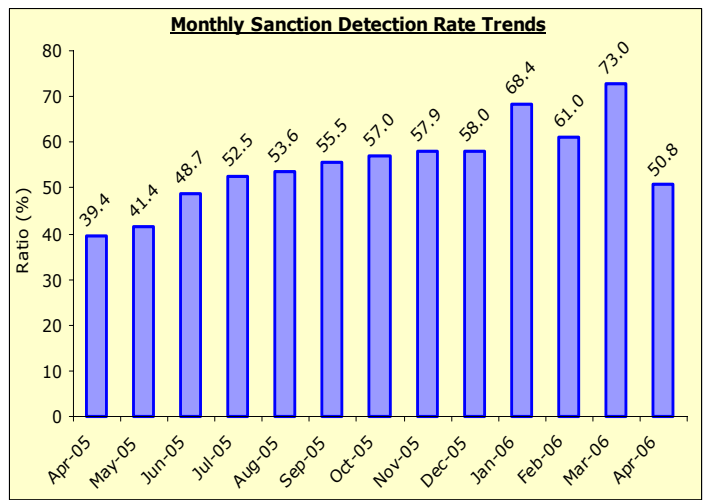
DYFED-POWYS POLICE

**TARGET 2006/07 : No Target**

## Recorded Crime Levels – April 2006

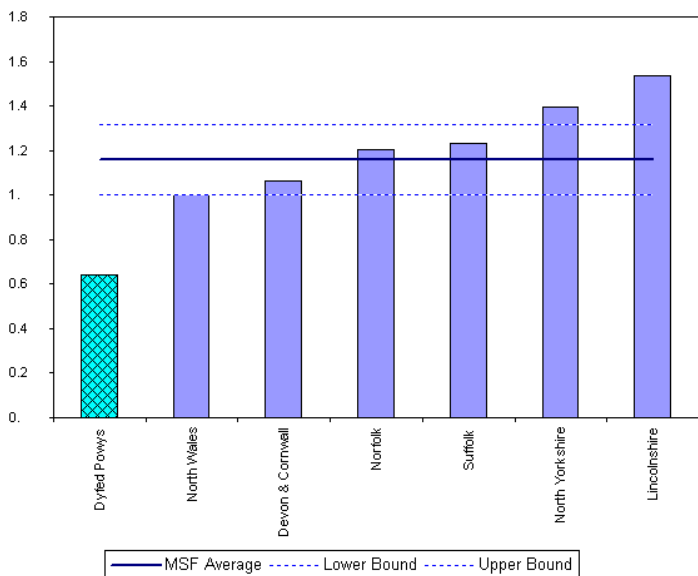


## Monthly Sanction Detection Rates – April 2006



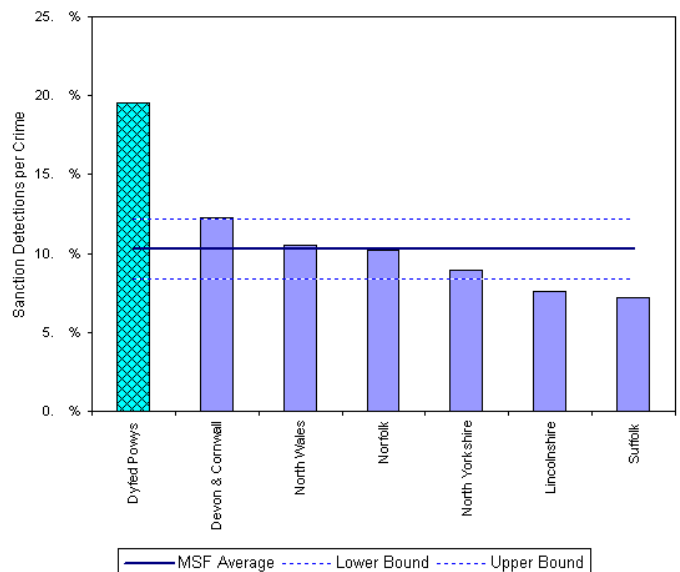
Total Other Burglary Crimes	April 2006 YTD			Detection Rates YTD		Annual Trends - SPLY		
	Crimes	Sanction Dets	Total Dets	Sanction %	Total %	Crimes SPLY	Change	% Change
<b>FORCE</b>	128	38	38	29.7%	29.7%	156	- 28	- 17.9%
<b>CARMS</b>	60	14	14	23.3%	23.3%	81	- 21	- 25.9%
<b>CERED</b>	11	4	4	36.4%	36.4%	13	- 2	- 15.4%
<b>PEMBS</b>	23	14	14	60.9%	60.9%	30	- 7	- 23.3%
<b>POWYS</b>	34	6	6	17.6%	17.6%	32	+ 2	+ 6.3%

## MSF – Crimes per 1000 Residents 01 December 2005 – 28 February 2006 (latest quarter)



Crimes per 1000 Residents - Non Domestic Burglary - 01 Dec 2005 - 28 Feb 2006

## MSF – Sanction detections (annual): 01 April 2005 – 28 February 2006



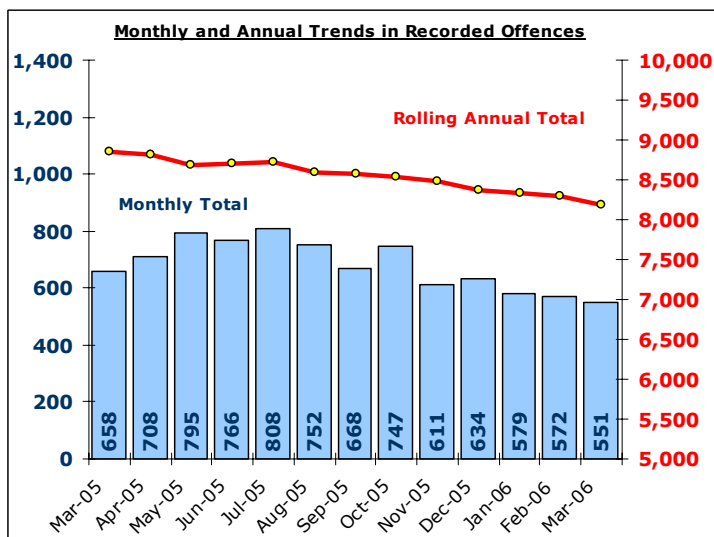
Bar chart MSF - Sanction Detections per Crime-Dyfed Powys-Non Domestic Burglary-01 Dec 2005 - 28 Feb 2006

# Total Violent Crime

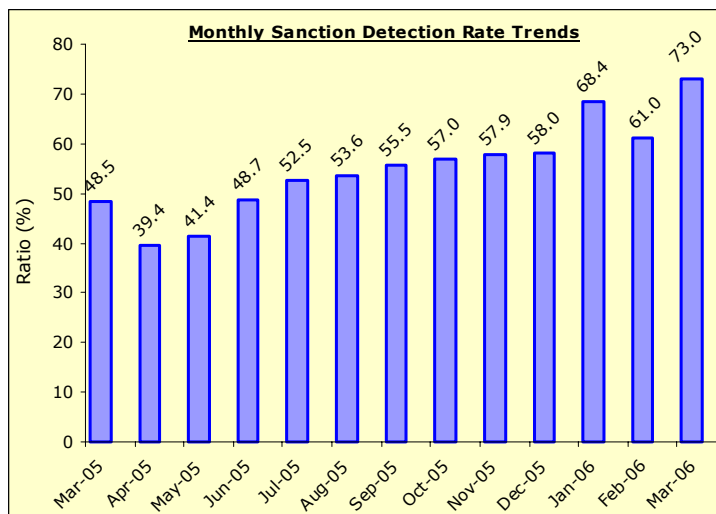
DYFED-POWYS POLICE

**TARGET 2006/07 – 3% Reduction in offences & 58% sanction detection rate**

## Recorded Crime Levels – April 2006

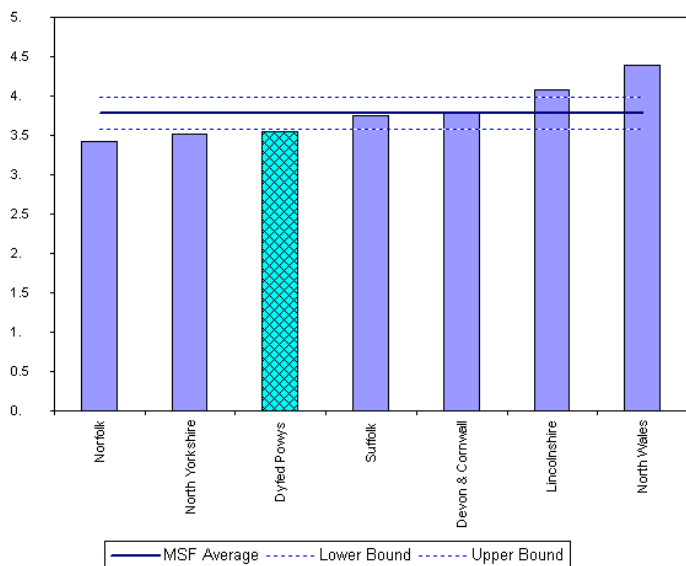


## Monthly Sanction Detection Rates – April 2006

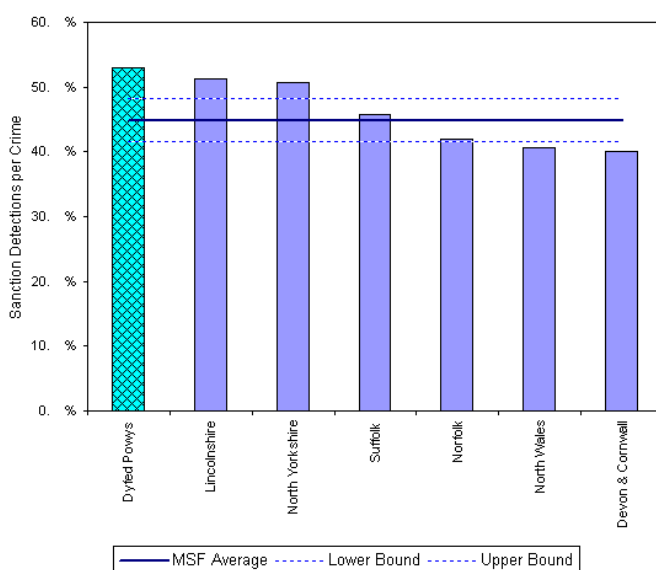


Total Violent Crimes	April 2006 YTD			Detection Rates YTD		Annual Trends - SPLY		
	Crimes	Sanction Dets	Total Dets	Sanction %	Total %	Crimes SPLY	Change	% Change
<b>FORCE</b>	<b>829</b>	<b>421</b>	<b>439</b>	<b>50.8%</b>	<b>53.0%</b>	<b>708</b>	<b>+ 121</b>	<b>+ 17.1%</b>
<b>CARMS</b>	<b>280</b>	<b>137</b>	<b>142</b>	<b>48.9%</b>	<b>50.7%</b>	<b>260</b>	<b>+ 20</b>	<b>+ 7.7%</b>
<b>CERED</b>	<b>96</b>	<b>50</b>	<b>54</b>	<b>52.1%</b>	<b>56.3%</b>	<b>105</b>	<b>- 9</b>	<b>- 8.6%</b>
<b>PEMBS</b>	<b>235</b>	<b>125</b>	<b>132</b>	<b>53.2%</b>	<b>56.2%</b>	<b>174</b>	<b>+ 61</b>	<b>+ 35.1%</b>
<b>POWYS</b>	<b>218</b>	<b>109</b>	<b>111</b>	<b>50.0%</b>	<b>50.9%</b>	<b>169</b>	<b>+ 49</b>	<b>+ 29.0%</b>

## MSF – Crimes per 1000 Residents 01 December 2005 – 28 February 2006 (latest quarter)



## MSF – Sanction detections (annual): 01 April 2005 – 28 February 2006

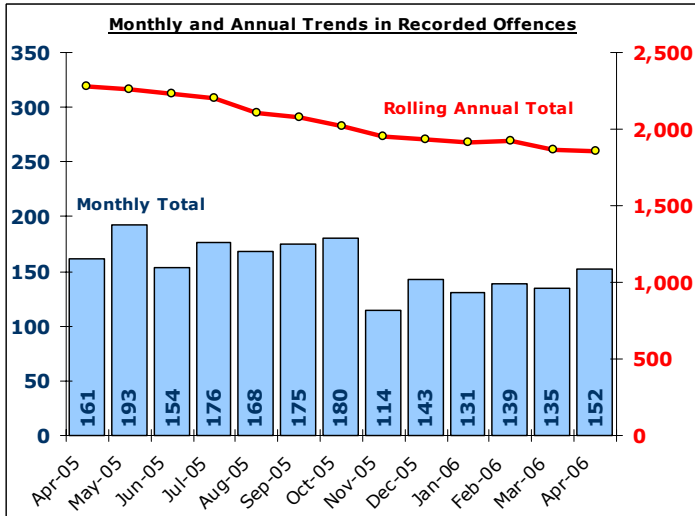


# Total Vehicle Crime

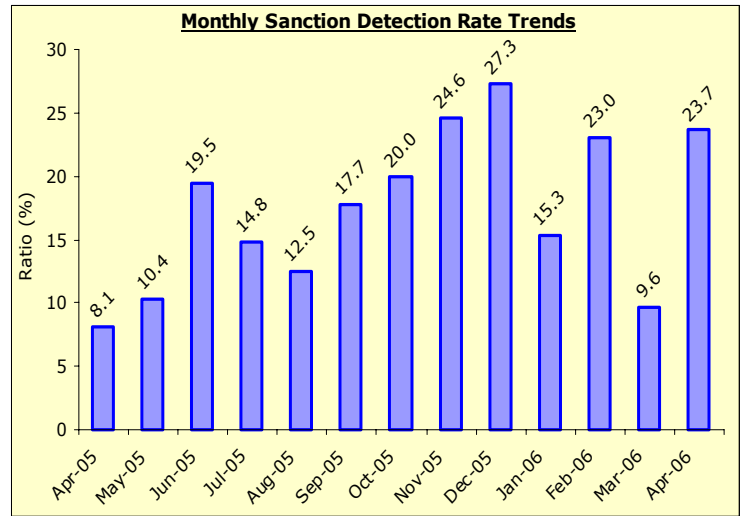
DYFED-POWYS POLICE

**TARGET 2006/07 : 2% Decrease in offences & 16% sanction detection rate**

## Recorded Crime Levels – April 2006

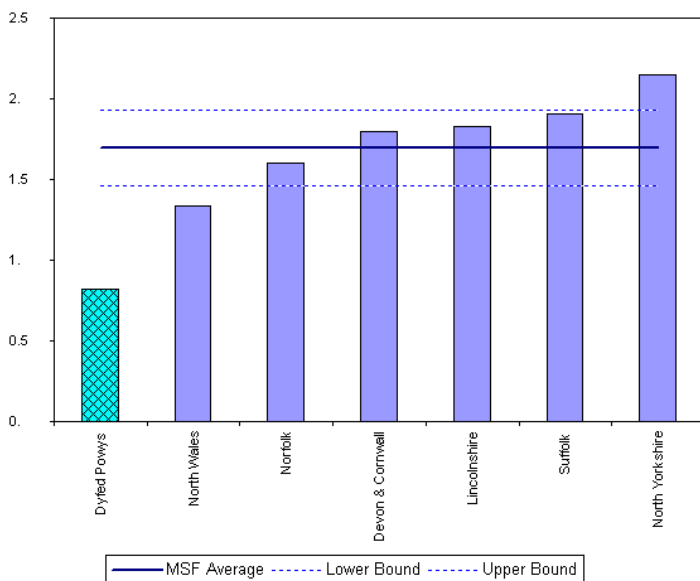


## Monthly Sanction Detection Rates – April 2006



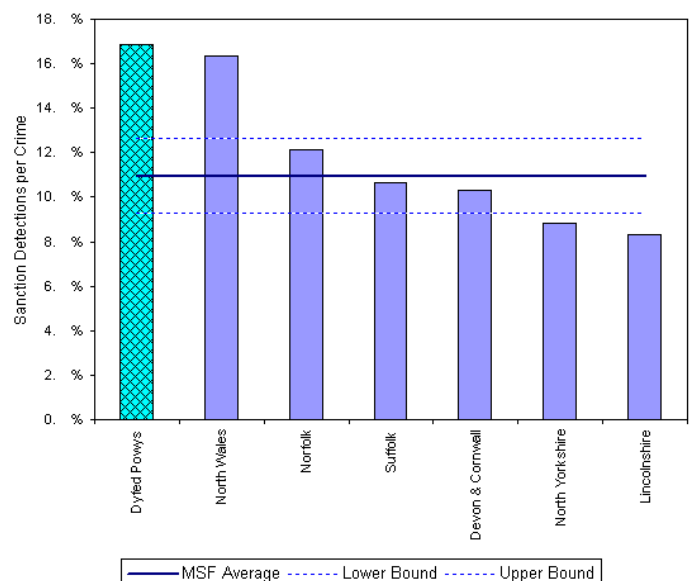
Total Vehicle Crimes	April 2006 YTD			Detection Rates YTD		Annual Trends - SPLY		
	Crimes	Sanction Dets	Total Dets	Sanction %	Total %	Crimes SPLY	Change	% Change
<b>FORCE</b>	<b>152</b>	<b>36</b>	<b>37</b>	<b>23.7%</b>	<b>24.3%</b>	<b>161</b>	<b>- 9</b>	<b>- 5.6%</b>
<b>CARMS</b>	<b>52</b>	<b>25</b>	<b>25</b>	<b>48.1%</b>	<b>48.1%</b>	<b>65</b>	<b>- 13</b>	<b>- 20.0%</b>
<b>CERED</b>	<b>22</b>	<b>3</b>	<b>4</b>	<b>13.6%</b>	<b>18.2%</b>	<b>11</b>	<b>+ 11</b>	<b>+ 100.0%</b>
<b>PEMBS</b>	<b>34</b>	<b>2</b>	<b>2</b>	<b>5.9%</b>	<b>5.9%</b>	<b>44</b>	<b>- 10</b>	<b>- 22.7%</b>
<b>POWYS</b>	<b>44</b>	<b>6</b>	<b>6</b>	<b>13.6%</b>	<b>13.6%</b>	<b>41</b>	<b>+ 3</b>	<b>+ 7.3%</b>

## MSF – Crimes per 1000 Residents 01 December 2005 – 28 February 2006 (latest quarter)



Crimes per 1000 Residents - Vehicle Crime (excluding Vehicle Inference) - 01 Dec 2005 - 28 Feb 2006

## MSF – Sanction detections (annual): 01 April 2005 – 28 February 2006



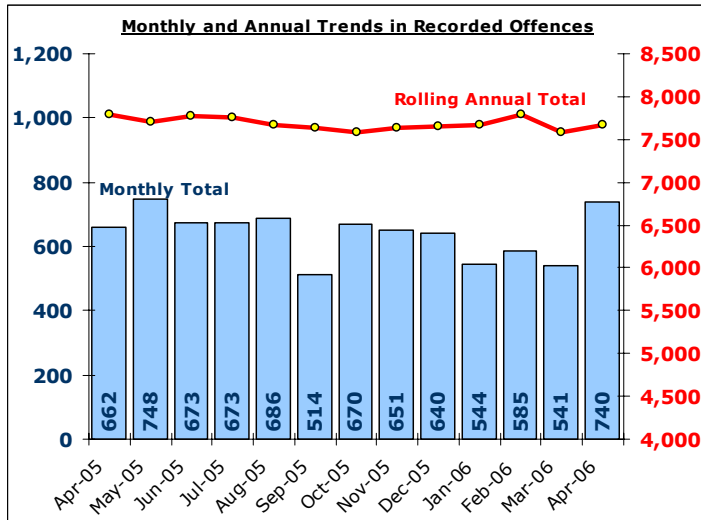
Bar chart MSF - Sanction Detections per Crime-Dyfed Powys-Vehicle Crime (excluding Vehicle Inference) - 01 Mar 2005 - 28 Feb 2006

# Total Criminal Damage

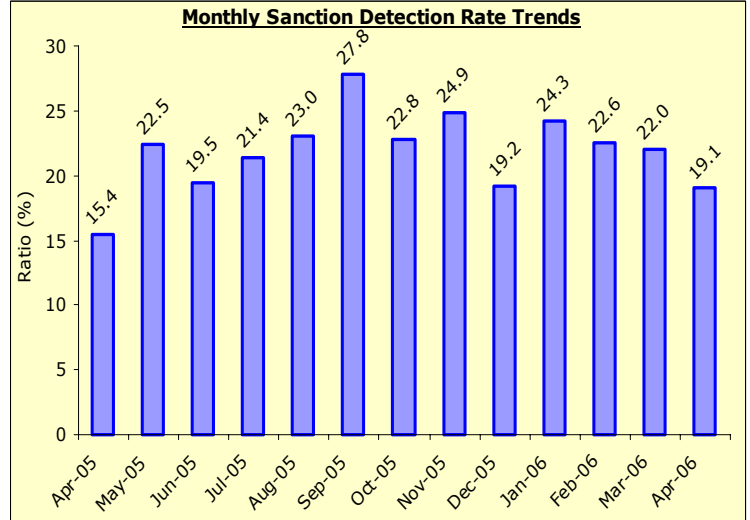
EXCLUDES ARSON % THREAT TO COMMIT CRIMINAL DAMAGE (HOC 56 & 59)

**TARGET 2005/06 : 3% Decrease in offences**

## Recorded Crime Levels – April 2006

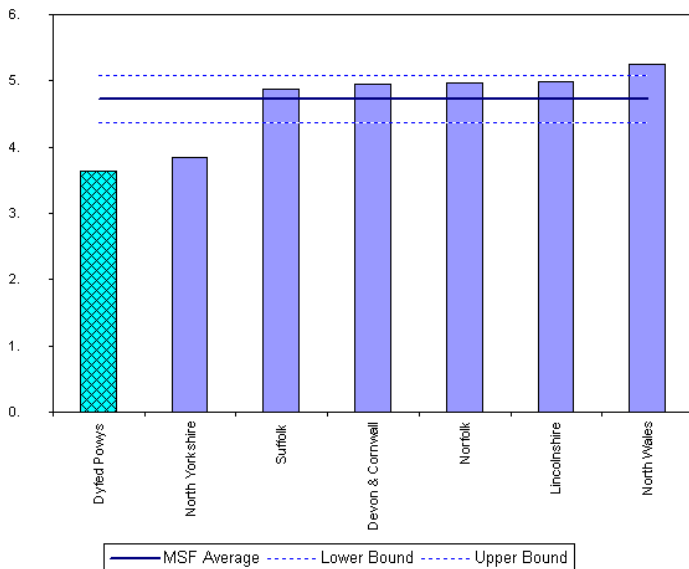


## Monthly Sanction Detection Rates – April 2006

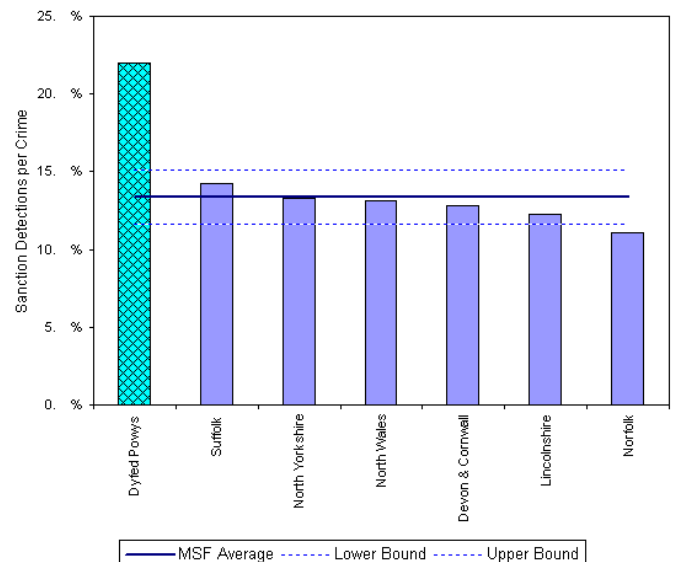


Total Criminal Damage	April 2006 YTD			Detection Rates YTD		Annual Trends - SPLY		
	Crimes	Sanctions Dets	Total Dets	Sanction %	Total %	Crimes SPLY	Change	% Change
<b>FORCE</b>	<b>740</b>	<b>141</b>	<b>148</b>	<b>19.1%</b>	<b>20.0%</b>	<b>662</b>	<b>+ 78</b>	<b>+ 11.8%</b>
<b>CARMS</b>	<b>283</b>	<b>46</b>	<b>48</b>	<b>16.3%</b>	<b>17.0%</b>	<b>234</b>	<b>+ 49</b>	<b>+ 20.9%</b>
<b>CERED</b>	<b>89</b>	<b>22</b>	<b>22</b>	<b>24.7%</b>	<b>24.7%</b>	<b>71</b>	<b>+ 18</b>	<b>+ 25.4%</b>
<b>PEMBS</b>	<b>199</b>	<b>32</b>	<b>37</b>	<b>16.1%</b>	<b>18.6%</b>	<b>189</b>	<b>+ 10</b>	<b>+ 5.3%</b>
<b>POWYS</b>	<b>169</b>	<b>41</b>	<b>41</b>	<b>24.3%</b>	<b>24.3%</b>	<b>168</b>	<b>+ 1</b>	<b>+ 0.6%</b>

## MSF – Crimes per 1000 Residents 01 December 2005 – 28 February 2006 (latest quarter)



## MSF – Sanction detections (annual): 01 April 2005 – 28 February 2006



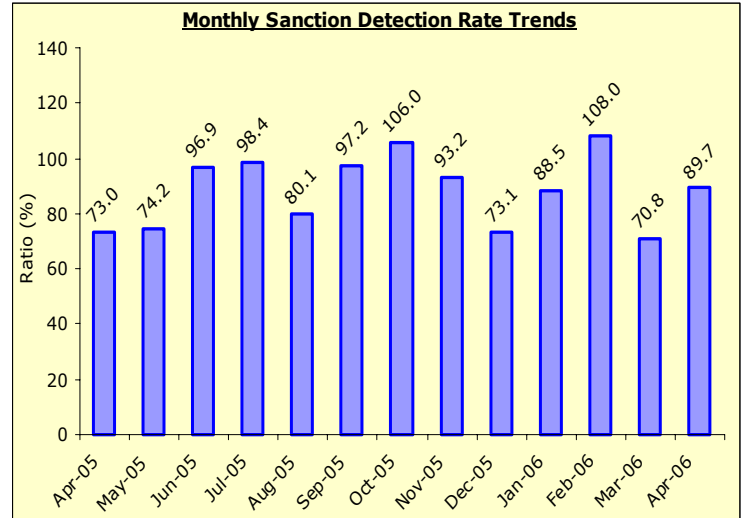
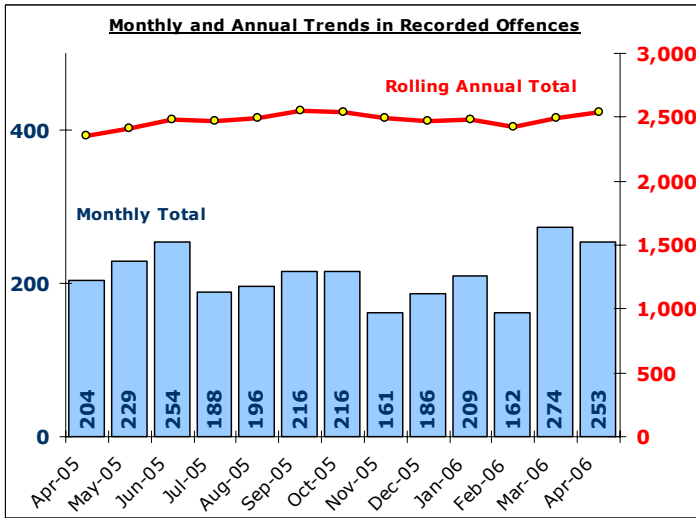
# Total Drug Offences

DYFED-POWYS POLICE

**TARGET 2005/06 : NO TARGET**

## Recorded Crime Levels – April 2006

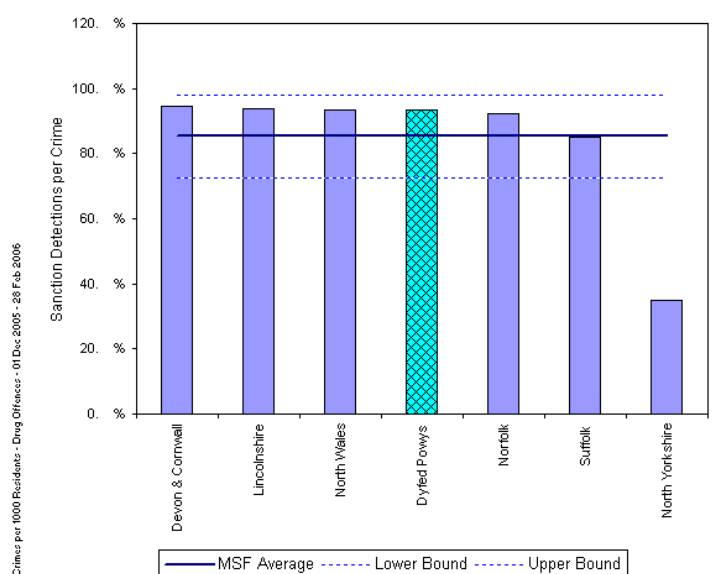
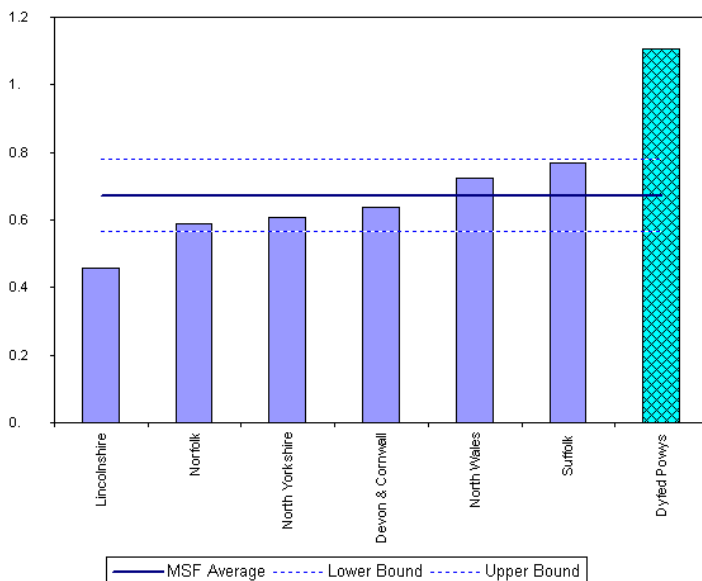
## Monthly Sanction Detection Rates – April 2006



Total Drug Offences	April 2006 YTD			Detection Rates YTD		Annual Trends - SPLY		
	Crimes	Sanction Dets	Total Dets	Sanction %	Total %	Crimes SPLY	Change	% Change
<b>FORCE</b>	<b>253</b>	<b>227</b>	<b>239</b>	<b>89.7%</b>	<b>94.5%</b>	<b>204</b>	<b>+ 49</b>	<b>+ 24.0%</b>
<b>CARMS</b>	<b>103</b>	<b>103</b>	<b>110</b>	<b>100.0%</b>	<b>106.8%</b>	<b>76</b>	<b>+ 27</b>	<b>+ 35.5%</b>
<b>CERED</b>	<b>32</b>	<b>30</b>	<b>32</b>	<b>93.8%</b>	<b>100.0%</b>	<b>41</b>	<b>- 9</b>	<b>- 22.0%</b>
<b>PEMBS</b>	<b>43</b>	<b>39</b>	<b>40</b>	<b>90.7%</b>	<b>93.0%</b>	<b>53</b>	<b>- 10</b>	<b>- 18.9%</b>
<b>POWYS</b>	<b>75</b>	<b>55</b>	<b>57</b>	<b>73.3%</b>	<b>76.0%</b>	<b>34</b>	<b>+ 41</b>	<b>+ 120.6%</b>

## MSF – Crimes per 1000 Residents 01 December 2005 – 28 February 2006 (latest quarter)

## MSF – Sanction detections (annual): 01 April 2005 – 28 February 2006



# Section Level Sanction Detection Summary

DYFED-POWYS POLICE

**TARGET 2006/07 : 40% SANCTION DETECTION RATE**

## Sanction Detections Performance April 2006 YTD: Total Recorded Crimes

Sanction Detection Rate	Recorded Crimes	Detected	Det Ratio	Recorded Crimes SPLY	Diff	% Change
<b>THE FORCE</b>	<b>2,821</b>	<b>1,079</b>	<b>38.2%</b>	<b>2,689</b>	<b>+ 132</b>	<b>+ 4.9%</b>
<b>Carmarthenshire</b>	<b>1,047</b>	<b>419</b>	<b>40.0%</b>	<b>1,027</b>	<b>+ 20</b>	<b>+ 1.9%</b>
Ammanford (AA)	126	45	35.7%	139	- 13	- 9.4%
Carmarthen (AC)	243	96	39.5%	245	- 2	- 0.8%
Llanelli (AL)	513	211	41.1%	518	- 5	- 1.0%
Towy Gwendraeth (AT)	165	67	40.6%	125	+ 40	+ 32.0%
<b>Ceredigion</b>	<b>336</b>	<b>141</b>	<b>42.0%</b>	<b>350</b>	<b>- 14</b>	<b>- 4.0%</b>
Aberystwyth (BA)	168	79	47.0%	207	- 39	- 18.8%
Aberaeron (BB)	36	14	38.9%	32	+ 4	+ 12.5%
Cardigan (BC)	88	32	36.4%	72	+ 16	+ 22.2%
Lampeter (BL)	44	16	36.4%	39	+ 5	+ 12.8%
<b>Pembrokeshire</b>	<b>714</b>	<b>255</b>	<b>35.7%</b>	<b>685</b>	<b>+ 29</b>	<b>+ 4.2%</b>
Fishguard (CF)	109	38	34.9%	80	+ 29	+ 36.3%
Haverfordwest (CH)	170	76	44.7%	173	- 3	- 1.7%
Milford Haven (CM)	142	55	38.7%	109	+ 33	+ 30.3%
Pembroke Dock (CP)	141	47	33.3%	192	- 51	- 26.6%
Tenby (CT)	152	39	25.7%	131	+ 21	+ 16.0%
<b>Powys</b>	<b>724</b>	<b>264</b>	<b>36.5%</b>	<b>627</b>	<b>+ 97</b>	<b>+ 15.5%</b>
Brecon (DB)	169	47	27.8%	158	+ 11	+ 7.0%
Llandrindod Wells (DL)	140	54	38.6%	122	+ 18	+ 14.8%
Newtown (DN)	244	92	37.7%	164	+ 80	+ 48.8%
Welshpool (DW)	127	55	43.3%	130	- 3	- 2.3%
Ystradgynlais (DY)	44	16	36.4%	53	- 9	- 17.0%

## Sanction Detection Performance April 2006 YTD: Domestic Burglary, Violent Crime & Vehicle Crime

Sanction Detections	Total Domestic Burglary			Total Violent Crime			Total Vehicle Crime		
	Recorded Crimes	Detected	Det Ratio	Recorded Crimes	Detected	Det Ratio	Recorded Crimes	Detected	Det Ratio
<b>THE FORCE</b>	<b>62</b>	<b>21</b>	<b>33.9%</b>	<b>829</b>	<b>421</b>	<b>50.8%</b>	<b>152</b>	<b>36</b>	<b>23.7%</b>
<b>Carmarthenshire</b>	<b>23</b>	<b>13</b>	<b>56.5%</b>	<b>280</b>	<b>137</b>	<b>48.9%</b>	<b>52</b>	<b>25</b>	<b>48.1%</b>
Ammanford (AA)	2	0	0.0%	30	12	40.0%	10	2	20.0%
Carmarthen (AC)	2	2	100.0%	63	31	49.2%	10	2	20.0%
Llanelli (AL)	16	10	62.5%	146	75	51.4%	22	15	68.2%
Towy Gwendraeth (AT)	3	1	33.3%	41	19	46.3%	10	6	60.0%
<b>Ceredigion</b>	<b>9</b>	<b>1</b>	<b>11.1%</b>	<b>96</b>	<b>50</b>	<b>52.1%</b>	<b>22</b>	<b>3</b>	<b>13.6%</b>
Aberystwyth (BA)	5	0	0.0%	45	22	48.9%	12	1	8.3%
Aberaeron (BB)	1	0	0.0%	8	7	87.5%	3	0	0.0%
Cardigan (BC)	2	1	50.0%	31	15	48.4%	7	2	28.6%
Lampeter (BL)	1	0	0.0%	12	6	50.0%	0	0	No Calc
<b>Pembrokeshire</b>	<b>15</b>	<b>3</b>	<b>20.0%</b>	<b>235</b>	<b>125</b>	<b>53.2%</b>	<b>34</b>	<b>2</b>	<b>5.9%</b>
Fishguard (CF)	5	1	20.0%	36	20	55.6%	7	0	0.0%
Haverfordwest (CH)	2	1	50.0%	64	30	46.9%	5	0	0.0%
Milford Haven (CM)	2	0	0.0%	46	30	65.2%	4	0	0.0%
Pembroke Dock (CP)	5	1	20.0%	48	25	52.1%	8	0	0.0%
Tenby (CT)	1	0	0.0%	41	20	48.8%	10	2	20.0%
<b>Powys</b>	<b>15</b>	<b>4</b>	<b>26.7%</b>	<b>218</b>	<b>109</b>	<b>50.0%</b>	<b>44</b>	<b>6</b>	<b>13.6%</b>
Brecon (DB)	5	0	0.0%	52	26	50.0%	12	2	16.7%
Llandrindod Wells (DL)	1	0	0.0%	30	22	73.3%	11	1	9.1%
Newtown (DN)	4	3	75.0%	93	40	43.0%	11	2	18.2%
Welshpool (DW)	3	1	33.3%	34	15	44.1%	4	1	25.0%
Ystradgynlais (DY)	2	0	0.0%	9	6	66.7%	6	0	0.0%

# Target Contribution Summary - Carmarthenshire

DYFED-POWYS POLICE

**GREEN/RED** indicates current performance **consistent** or **not consistent** with force target reduction & detection rate

CARMARTHENSHIRE		April YTD		Last Year		Indicator
<b>CRIME</b>	Performance	Indicator	Performance	Indicator	Change & Detection	
Total Crime Recorded (per 1,000 population)	1049	6.1	1026	5.9	2.2%	
Total Detections (% rate)	435	41.5%	353	34.4%	41.5%	
Burglary Dwelling (per 1,000 households)	23	0.3	20	0.3	15.0%	
Total Detections (% rate)	13	56.5%	6	30.0%	56.5%	
Total Violent Crime (per 1,000 population)	281	1.6	259	1.5	8.5%	
Total Detections (% rate)	142	50.5%	122	47.1%	50.5%	
Autocrime per (1,000 population)	52	0.3	65	0.4	-20.0%	
Total Detections (% rate)	25	48.1%	5	7.7%	48.1%	
Ammanford		April YTD		Last Year		Indicator
<b>CRIME</b>	Performance	Indicator	Performance	Indicator	Change & Detection	
Total Crime Recorded (per 1,000 population)	126	3.9	139	4.3	-9.4%	
Total Detections (% rate)	46	36.5%	73	52.5%	36.5%	
Burglary Dwelling (per 1,000 households)	2	0.1	2	0.1	0.0%	
Total Detections (% rate)	0	0.0%	1	50.0%	0.0%	
Total Violent Crime (per 1,000 population)	30	0.9	29	0.9	3.4%	
Total Detections (% rate)	12	40.0%	20	69.0%	40.0%	
Autocrime per (1,000 population)	10	0.3	11	0.3	-9.1%	
Total Detections (% rate)	2	20.0%	1	9.1%	20.0%	
Carmarthen		April YTD		Last Year		Indicator
<b>CRIME</b>	Performance	Indicator	Performance	Indicator	Change & Detection	
Total Crime Recorded (per 1,000 population)	243	4.9	244	4.9	-0.4%	
Total Detections (% rate)	101	41.6%	109	44.7%	41.6%	
Burglary Dwelling (per 1,000 households)	2	0.1	5	0.2	-60.0%	
Total Detections (% rate)	2	100.0%	3	60.0%	100.0%	
Total Violent Crime (per 1,000 population)	63	1.3	74	1.5	-14.9%	
Total Detections (% rate)	31	49.2%	47	63.5%	49.2%	
Autocrime per (1,000 population)	10	0.2	10	0.2	0.0%	
Total Detections (% rate)	2	20.0%	0	0.0%	20.0%	
Llanelli		April YTD		Last Year		Indicator
<b>CRIME</b>	Performance	Indicator	Performance	Indicator	Change & Detection	
Total Crime Recorded (per 1,000 population)	513	8.5	517	8.5	-0.8%	
Total Detections (% rate)	219	42.7%	135	26.1%	42.7%	
Burglary Dwelling (per 1,000 households)	16	0.6	9	0.3	77.8%	
Total Detections (% rate)	10	62.5%	2	22.2%	62.5%	
Total Violent Crime (per 1,000 population)	146	2.4	123	2.0	18.7%	
Total Detections (% rate)	80	54.8%	42	34.1%	54.8%	
Autocrime per (1,000 population)	22	0.4	34	0.6	-35.3%	
Total Detections (% rate)	15	68.2%	2	5.9%	68.2%	
Tow/Gwendraeth		April YTD		Last Year		Indicator
<b>CRIME</b>	Performance	Indicator	Performance	Indicator	Change & Detection	
Total Crime Recorded (per 1,000 population)	165	5.5	125	4.1	32.0%	
Total Detections (% rate)	69	41.8%	36	28.8%	41.8%	
Burglary Dwelling (per 1,000 households)	3	0.2	3	0.2	0.0%	
Total Detections (% rate)	1	33.3%	0	0.0%	33.3%	
Total Violent Crime (per 1,000 population)	41	1.4	33	1.1	24.2%	
Total Detections (% rate)	19	46.3%	13	39.4%	46.3%	
Autocrime per (1,000 population)	10	0.3	10	0.3	0.0%	
Total Detections (% rate)	6	60.0%	2	20.0%	60.0%	

# Target Contribution Summary - Ceredigion

DYFED-POWYS POLICE

**GREEN/RED** indicates current performance **consistent** or **not consistent** with force target reduction & detection rate

CEREDIGION		April YTD		Last Year		Indicator
<b>CRIME</b>	Performance	Indicator	Performance	Indicator	Change & Detection	
Total Crime Recorded (per 1,000 population)	336	4.5	350	4.7	-4.0%	
Total Detections (% rate)	148	44.0%	139	39.7%	44.0%	
Burglary Dwelling (per 1,000 households)	9	0.3	3	0.1	200.0%	
Total Detections (% rate)	1	11.1%	0	0.0%	11.1%	
Total Violent Crime (per 1,000 population)	96	1.3	105	1.4	-8.6%	
Total Detections (% rate)	54	56.3%	45	42.9%	56.3%	
Autocrime per (1,000 population)	22	0.3	11	0.1	100.0%	
Total Detections (% rate)	4	18.2%	2	18.2%	18.2%	
Ceredigion North		April YTD		Last Year		Indicator
<b>CRIME</b>	Performance	Indicator	Performance	Indicator	Change & Detection	
Total Crime Recorded (per 1,000 population)	168	5.3	207	6.5	-18.8%	
Total Detections (% rate)	79	47.0%	87	42.0%	47.0%	
Burglary Dwelling (per 1,000 households)	5	0.4	2	0.2	150.0%	
Total Detections (% rate)	0	0.0%	0	0.0%	0.0%	
Total Violent Crime (per 1,000 population)	45	1.4	56	1.8	-19.6%	
Total Detections (% rate)	22	48.9%	24	42.9%	48.9%	
Autocrime per (1,000 population)	12	0.4	3	0.1	300.0%	
Total Detections (% rate)	1	8.3%	1	33.3%	8.3%	
Ceredigion South		April YTD		Last Year		Indicator
<b>CRIME</b>	Performance	Indicator	Performance	Indicator	Change & Detection	
Total Crime Recorded (per 1,000 population)	168	3.9	143	3.3	17.5%	
Total Detections (% rate)	69	41.1%	52	36.4%	41.1%	
Burglary Dwelling (per 1,000 households)	4	0.2	1	0.1	300.0%	
Total Detections (% rate)	1	25.0%	0	0.0%	25.0%	
Total Violent Crime (per 1,000 population)	51	1.2	49	1.1	4.1%	
Total Detections (% rate)	32	62.7%	21	42.9%	62.7%	
Autocrime per (1,000 population)	10	0.2	8	0.2	25.0%	
Total Detections (% rate)	3	30.0%	1	12.5%	30.0%	

Ceredigion South is an area used for comparison purposes only. It incorporates the three section areas of Lampeter/Aberaeron and Cardigan. Details on these three discrete areas are also included here for information.

Aberaeron		April YTD		Last Year		Indicator
<b>CRIME</b>	Performance	Indicator	Performance	Indicator	Change & Detection	
Total Crime Recorded (per 1,000 population)	36	2.8	32	2.5	12.5%	
Total Detections (% rate)	14	38.9%	12	37.5%	38.9%	
Burglary Dwelling (per 1,000 households)	1	0.2	0	0.0	#DIV/0!	
Total Detections (% rate)	0	0.0%	0	#DIV/0!	0.0%	
Total Violent Crime (per 1,000 population)	8	0.6	5	0.4	60.0%	
Total Detections (% rate)	7	87.5%	5	100.0%	87.5%	
Autocrime per (1,000 population)	3	0.2	3	0.2	0.0%	
Total Detections (% rate)	0	0.0%	0	0.0%	0.0%	
Cardigan		April YTD		Last Year		Indicator
<b>CRIME</b>	Performance	Indicator	Performance	Indicator	Change & Detection	
Total Crime Recorded (per 1,000 population)	88	4.7	72	3.8	22.2%	
Total Detections (% rate)	35	39.8%	27	37.5%	39.8%	
Burglary Dwelling (per 1,000 households)	2	0.2	0	0.0	#DIV/0!	
Total Detections (% rate)	1	50.0%	0	#DIV/0!	50.0%	
Total Violent Crime (per 1,000 population)	31	1.6	31	1.6	0.0%	
Total Detections (% rate)	17	54.8%	12	38.7%	54.8%	
Autocrime per (1,000 population)	7	0.4	3	0.2	133.3%	
Total Detections (% rate)	2	28.6%	0	0.0%	28.6%	
Lampeter		April YTD		Last Year		Indicator
<b>CRIME</b>	Performance	Indicator	Performance	Indicator	Change & Detection	
Total Crime Recorded (per 1,000 population)	44	3.8	39	3.4	12.8%	
Total Detections (% rate)	20	45.5%	13	33.3%	45.5%	
Burglary Dwelling (per 1,000 households)	1	0.2	1	0.2	0.0%	
Total Detections (% rate)	0	0.0%	0	0.0%	0.0%	
Total Violent Crime (per 1,000 population)	12	1.0	13	1.1	-7.7%	
Total Detections (% rate)	8	66.7%	4	30.8%	66.7%	
Autocrime per (1,000 population)	0	0.0	2	0.2	-100.0%	
Total Detections (% rate)	1	#DIV/0!	1	50.0%	#DIV/0!	

# Target Contribution Summary - Pembrokeshire

DYFED-POWYS POLICE

**GREEN/RED** indicates current performance **consistent** or **not consistent** with force target reduction & total detection rate

PEMBROKESHIRE		April YTD		Last Year		Indicator
<b>CRIME</b>	Performance	Indicator	Performance	Indicator	Change & Detection	
Total Crime Recorded (per 1,000 population)	714	6.3	685	6.0	4.2%	
Total Detections (% rate)	271	38.0%	257	37.5%	38.0%	
Burglary Dwelling (per 1,000 households)	15	0.3	14	0.3	7.1%	
Total Detections (% rate)	3	20.0%	11	78.6%	20.0%	
Total Violent Crime (per 1,000 population)	235	2.1	174	1.5	35.1%	
Total Detections (% rate)	132	56.2%	92	52.9%	56.2%	
Autocrime per (1,000 population)	34	0.3	44	0.4	-22.7%	
Total Detections (% rate)	2	5.9%	7	15.9%	5.9%	
Fishguard		April YTD		Last Year		Indicator
<b>CRIME</b>	Performance	Indicator	Performance	Indicator	Change & Detection	
Total Crime Recorded (per 1,000 population)	109	4.1	80	3.0	36.3%	
Total Detections (% rate)	38	34.9%	26	32.5%	34.9%	
Burglary Dwelling (per 1,000 households)	5	0.4	0	0.0	#DIV/0!	
Total Detections (% rate)	1	20.0%	1	#DIV/0!	20.0%	
Total Violent Crime (per 1,000 population)	36	1.4	18	0.7	100.0%	
Total Detections (% rate)	20	55.6%	8	44.4%	55.6%	
Autocrime per (1,000 population)	7	0.3	6	0.2	16.7%	
Total Detections (% rate)	0	0.0%	0	0.0%	0.0%	
Haverfordwest		April YTD		Last Year		Indicator
<b>CRIME</b>	Performance	Indicator	Performance	Indicator	Change & Detection	
Total Crime Recorded (per 1,000 population)	170	8.5	172	8.6	-1.2%	
Total Detections (% rate)	82	48.2%	51	29.7%	48.2%	
Burglary Dwelling (per 1,000 households)	2	0.2	7	0.8	-71.4%	
Total Detections (% rate)	1	50.0%	4	57.1%	50.0%	
Total Violent Crime (per 1,000 population)	64	3.2	46	2.3	39.1%	
Total Detections (% rate)	32	50.0%	16	34.8%	50.0%	
Autocrime per (1,000 population)	5	0.3	7	0.4	-28.6%	
Total Detections (% rate)	0	0.0%	1	14.3%	0.0%	
Milford Haven		April YTD		Last Year		Indicator
<b>CRIME</b>	Performance	Indicator	Performance	Indicator	Change & Detection	
Total Crime Recorded (per 1,000 population)	142	5.8	110	4.5	29.1%	
Total Detections (% rate)	55	38.7%	47	42.7%	38.7%	
Burglary Dwelling (per 1,000 households)	2	0.2	1	0.1	100.0%	
Total Detections (% rate)	0	0.0%	1	100.0%	0.0%	
Total Violent Crime (per 1,000 population)	46	1.9	41	1.7	12.2%	
Total Detections (% rate)	30	65.2%	16	39.0%	65.2%	
Autocrime per (1,000 population)	4	0.2	4	0.2	0.0%	
Total Detections (% rate)	0	0.0%	3	75.0%	0.0%	
Pembroke Dock		April YTD		Last Year		Indicator
<b>CRIME</b>	Performance	Indicator	Performance	Indicator	Change & Detection	
Total Crime Recorded (per 1,000 population)	141	7.4	192	10.0	-26.6%	
Total Detections (% rate)	52	36.9%	75	39.1%	36.9%	
Burglary Dwelling (per 1,000 households)	5	0.6	5	0.6	0.0%	
Total Detections (% rate)	1	20.0%	3	60.0%	20.0%	
Total Violent Crime (per 1,000 population)	48	2.5	42	2.2	14.3%	
Total Detections (% rate)	29	60.4%	30	71.4%	60.4%	
Autocrime per (1,000 population)	8	0.4	15	0.8	-46.7%	
Total Detections (% rate)	0	0.0%	1	6.7%	0.0%	
Tenby		April YTD		Last Year		Indicator
<b>CRIME</b>	Performance	Indicator	Performance	Indicator	Change & Detection	
Total Crime Recorded (per 1,000 population)	152	6.3	131	5.4	16.0%	
Total Detections (% rate)	44	28.9%	58	44.3%	28.9%	
Burglary Dwelling (per 1,000 households)	1	0.1	1	0.1	0.0%	
Total Detections (% rate)	0	0.0%	2	200.0%	0.0%	
Total Violent Crime (per 1,000 population)	41	1.7	27	1.1	51.9%	
Total Detections (% rate)	21	51.2%	22	81.5%	51.2%	
Autocrime per (1,000 population)	10	0.4	12	0.5	-16.7%	
Total Detections (% rate)	2	20.0%	2	16.7%	20.0%	

# Target Contribution Summary - Powys

DYFED-POWYS POLICE

**GREEN/RED** indicates current performance **consistent** or **not consistent** with force target reduction & detection rate

POWYS		April YTD		Last Year		Indicator
<b>CRIME</b>		Performance	Indicator	Performance	Indicator	Change & Detection
Total Crime Recorded (per 1,000 population)	724	5.7	627	5.0	15.5%	
Total Detections (% rate)	268	37.0%	199	31.7%	37.0%	
Burglary Dwelling (per 1,000 households)	15	0.3	15	0.3	0.0%	
Total Detections (% rate)	4	26.7%	2	13.3%	26.7%	
Total Violent Crime (per 1,000 population)	218	1.7	169	1.3	29.0%	
Total Detections (% rate)	111	50.9%	87	51.5%	50.9%	
Autocrime per (1,000 population)	44	0.3	41	0.3	7.3%	
Total Detections (% rate)	6	13.6%	1	2.4%	13.6%	
Brecon		April YTD		Last Year		Indicator
<b>CRIME</b>		Performance	Indicator	Performance	Indicator	Change & Detection
Total Crime Recorded (per 1,000 population)	169	6.6	158	6.2	7.0%	
Total Detections (% rate)	49	29.0%	37	23.4%	29.0%	
Burglary Dwelling (per 1,000 households)	5	0.5	1	0.1	400.0%	
Total Detections (% rate)	0	0.0%	0	0.0%	0.0%	
Total Violent Crime (per 1,000 population)	52	2.0	41	1.6	26.8%	
Total Detections (% rate)	27	51.9%	13	31.7%	51.9%	
Autocrime per (1,000 population)	12	0.5	18	0.7	-33.3%	
Total Detections (% rate)	2	16.7%	0	0.0%	16.7%	
Llandrindod Wells		April YTD		Last Year		Indicator
<b>CRIME</b>		Performance	Indicator	Performance	Indicator	Change & Detection
Total Crime Recorded (per 1,000 population)	140	5.0	122	4.3	14.8%	
Total Detections (% rate)	55	39.3%	39	32.0%	39.3%	
Burglary Dwelling (per 1,000 households)	1	0.1	5	0.4	-80.0%	
Total Detections (% rate)	0	0.0%	2	40.0%	0.0%	
Total Violent Crime (per 1,000 population)	30	1.1	28	1.0	7.1%	
Total Detections (% rate)	23	76.7%	15	53.6%	76.7%	
Autocrime per (1,000 population)	11	0.4	5	0.2	120.0%	
Total Detections (% rate)	1	9.1%	0	0.0%	9.1%	
Newtown		April YTD		Last Year		Indicator
<b>CRIME</b>		Performance	Indicator	Performance	Indicator	Change & Detection
Total Crime Recorded (per 1,000 population)	244	6.9	164	4.7	48.8%	
Total Detections (% rate)	93	38.1%	55	33.5%	38.1%	
Burglary Dwelling (per 1,000 households)	4	0.3	6	0.4	-33.3%	
Total Detections (% rate)	3	75.0%	0	0.0%	75.0%	
Total Violent Crime (per 1,000 population)	93	2.6	43	1.2	116.3%	
Total Detections (% rate)	40	43.0%	29	67.4%	43.0%	
Autocrime per (1,000 population)	11	0.3	12	0.3	-8.3%	
Total Detections (% rate)	2	18.2%	0	0.0%	18.2%	
Welshpool		April YTD		Last Year		Indicator
<b>CRIME</b>		Performance	Indicator	Performance	Indicator	Change & Detection
Total Crime Recorded (per 1,000 population)	127	5.0	130	5.1	-2.3%	
Total Detections (% rate)	55	43.3%	44	33.8%	43.3%	
Burglary Dwelling (per 1,000 households)	3	0.3	2	0.2	50.0%	
Total Detections (% rate)	1	33.3%	0	0.0%	33.3%	
Total Violent Crime (per 1,000 population)	34	1.3	41	1.6	-17.1%	
Total Detections (% rate)	15	44.1%	22	53.7%	44.1%	
Autocrime per (1,000 population)	4	0.2	4	0.2	0.0%	
Total Detections (% rate)	1	25.0%	1	25.0%	25.0%	
Ystradgynlais		April YTD		Last Year		Indicator
<b>CRIME</b>		Performance	Indicator	Performance	Indicator	Change & Detection
Total Crime Recorded (per 1,000 population)	44	3.7	53	4.5	-17.0%	
Total Detections (% rate)	16	36.4%	24	45.3%	36.4%	
Burglary Dwelling (per 1,000 households)	2	0.4	1	0.2	100.0%	
Total Detections (% rate)	0	0.0%	0	0.0%	0.0%	
Total Violent Crime (per 1,000 population)	9	0.8	16	1.3	-43.8%	
Total Detections (% rate)	6	66.7%	8	50.0%	66.7%	
Autocrime per (1,000 population)	6	0.5	2	0.2	200.0%	
Total Detections (% rate)	0	0.0%	0	0.0%	0.0%	

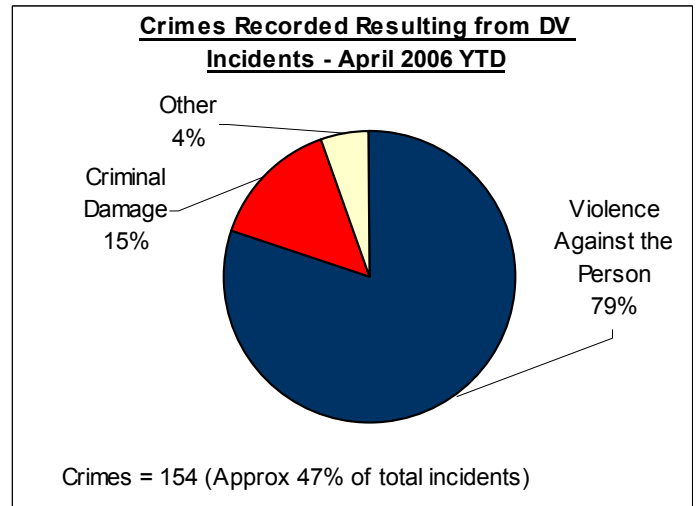
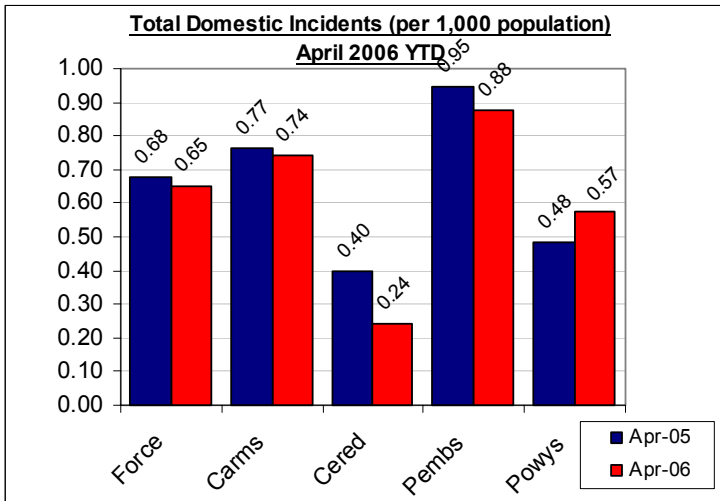
# Domestic Incidents

DYFED POWYS POLICE

**SPI 8A TARGET -38% OF INCIDENTS WITH AN ARREST MADE**

**LOCAL TARGET – 25 % OF TOTAL INCIDENTS INVOLVING REPEAT VICTIMS**

Please note figures provided here are reliant on force systems being updated and remain **provisional only**. For the latest detailed information please contact your local Public Protection Unit (PPU) for further details.



## Section & Divisional Summary – April 2006 YTD

Section	Incidents		Total Arrest Rate		Sanction Detections			Repeat Victims		April 2005 (SPLY)	
	Total Incidents	Arrests	Total Arrest Rate	Crimes	Sanction Detections	% Sanction Detection	% Repeats (12mths data)**	Total Incidents	Annual % Change		
Ammanford (AA)	21	9	42.9%	8	3	37.5%	17.3%	15	40.0%		
Carmarthen (AC)	25	9	36.0%	13	5	38.5%	15.2%	26	-3.8%		
Llanelli (AL)	67	28	41.8%	31	12	38.7%	23.3%	78	-14.1%		
Towy Gwendraeth (AT)	19	8	42.1%	7	4	57.1%	18.5%	17	11.8%		
<b>Carmarthenshire</b>	<b>132</b>	<b>54</b>	<b>40.9%</b>	<b>59</b>	<b>24</b>	<b>40.7%</b>	<b>20.2%</b>	<b>136</b>	<b>-2.9%</b>		
Aberystwyth (BA)	9	8	88.9%	6	3	50.0%	17.5%	19	-52.6%		
Aberaeron (BB)	3	2	66.7%	2	2	100.0%	16.7%	2	50.0%		
Cardigan (BC)	4	3	75.0%	2	1	50.0%	19.4%	5	-20.0%		
Lampeter (BL)	3	3	100.0%	2	1	50.0%	13.6%	5	-40.0%		
<b>Ceredigion</b>	<b>19</b>	<b>16</b>	<b>84.2%</b>	<b>12</b>	<b>7</b>	<b>58.3%</b>	<b>17.4%</b>	<b>31</b>	<b>-38.7%</b>		
Fishguard (CF)	18	11	61.1%	9	4	44.4%	28.4%	16	12.5%		
Haverfordwest (CH)	16	7	43.8%	5	1	20.0%	34.3%	26	-38.5%		
Milford Haven (CM)	24	8	33.3%	7	4	57.1%	33.4%	22	9.1%		
Pembroke Dock (CP)	26	13	50.0%	11	5	45.5%	28.2%	35	-25.7%		
Tenby (CT)	19	9	47.4%	8	4	50.0%	21.0%	12	58.3%		
<b>Pembrokeshire</b>	<b>103</b>	<b>48</b>	<b>46.6%</b>	<b>40</b>	<b>18</b>	<b>45.0%</b>	<b>29.9%</b>	<b>111</b>	<b>-7.2%</b>		
Brecon (DB)	15	8	53.3%	8	5	62.5%	18.5%	7	114.3%		
Llandrindod Wells (DL)	13	7	53.8%	9	3	33.3%	28.2%	12	8.3%		
Newtown (DN)	29	18	62.1%	19	4	21.1%	22.0%	20	45.0%		
Welshpool (DW)	8	4	50.0%	2	1	50.0%	22.0%	10	-20.0%		
Ystradgynlais (DY)	10	4	40.0%	5	4	80.0%	17.7%	14	-28.6%		
<b>Powys</b>	<b>75</b>	<b>41</b>	<b>54.7%</b>	<b>43</b>	<b>17</b>	<b>39.5%</b>	<b>21.7%</b>	<b>63</b>	<b>19.0%</b>		
<b>Force</b>	<b>329</b>	<b>159</b>	<b>48.3%</b>	<b>154</b>	<b>66</b>	<b>42.9%</b>	<b>23.3%</b>	<b>341</b>	<b>-3.5%</b>		

Source: LCS Recorded Domestic Incident Details (all data extracted 05/05/06).

\*\* Repeat Victims performance is based on 12-months total incident data and not fiscal year-to-date and includes **all victims** – not only those involving both the same victim and offender.

*The introduction of the Serious Organised Crime and Police Act 2005 (SOCPA) on 01/01/06 has resulted in the withdrawal of the term 'power of arrest'. As a consequence of this it has ceased to be a discrete performance measure.*

# User Satisfaction

## CITIZEN FOCUS PERFORMANCE ASSESSMENT DOMAIN

DECEMBER 2005 DATA - LATEST

These measures constitute the citizen focus domain in the police performance assessment framework. All victims of crimes (domestic burglary, violent crime and vehicle crime only) or those involved in road traffic collisions are surveyed within a short period of coming into contact with the force to gain their views on the service they received.

For performance assessment purposes, these measurements of user satisfaction are grouped into five main themes, which are:

- SPI 1a – Satisfaction with making contact with the police: 'Ease of Contact'
- SPI 1b – Satisfaction with the action taken by the police: 'Actions'
- SPI 1c – Satisfaction with being kept informed of progress: 'Follow-Up'
- SPI 1d – Satisfaction with their treatment by staff: 'Treatment'
- SPI 1e – Satisfaction with the overall service provided: 'Whole Experience'

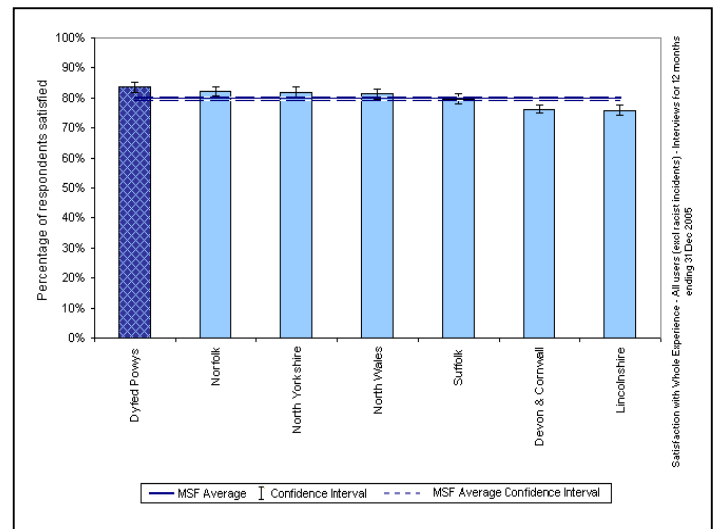
### Force User Satisfaction – Year Ending December 2005

#### Comparative User Satisfaction

Satisfaction with...	DPP Force	MSF Average	Difference
Ease of Contact	91.8%	89.6%	2.2%
Actions	83.0%	77.3%	5.7%
Follow-up	70.3%	63.2%	7.1%
Treatment	91.1%	89.9%	1.2%
Whole experience	83.6%	79.8%	3.8%

Source: Home Office / Iquanta, April 2006

#### MSF – Comparative Force Performance - Whole Experience



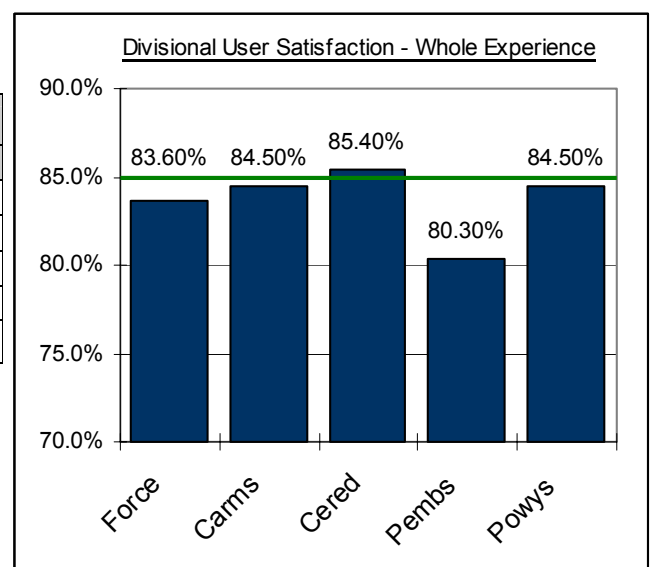
Source: Home Office / Iquanta, April 2006

### Divisional User Satisfaction – Year Ending December 2005 (Jan 05 – Dec 05)

#### BCU user Satisfaction Summary

Year Ending Dec 2005	% Satisfied (Very, Completely and Fairly Satisfied)					Target
	Force	Carms	Cered	Pembs	Powys	
Ease of Contact	91.8%	92.0%	94.8%	89.7%	92.0%	92%
Actions	83.0%	84.3%	83.0%	80.5%	83.7%	84%
Follow-up	70.3%	71.8%	72.6%	67.6%	70.1%	70%
Treatment	91.1%	91.1%	94.0%	89.4%	91.3%	92%
Whole experience	83.6%	84.5%	85.4%	80.3%	84.5%	85%

Source: Home Office / Iquanta, April 2006

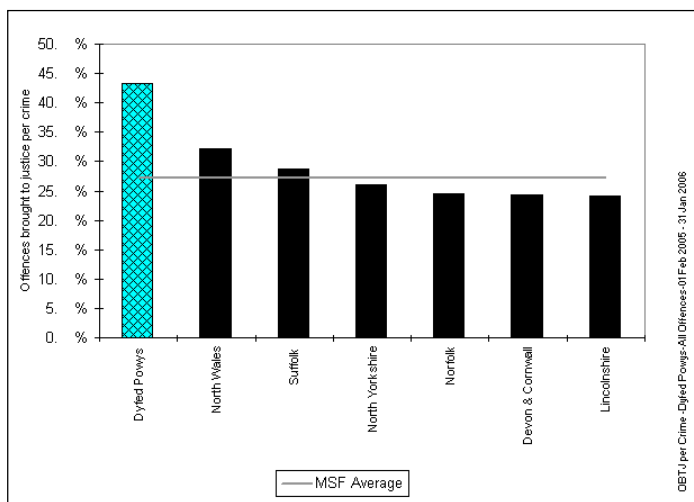
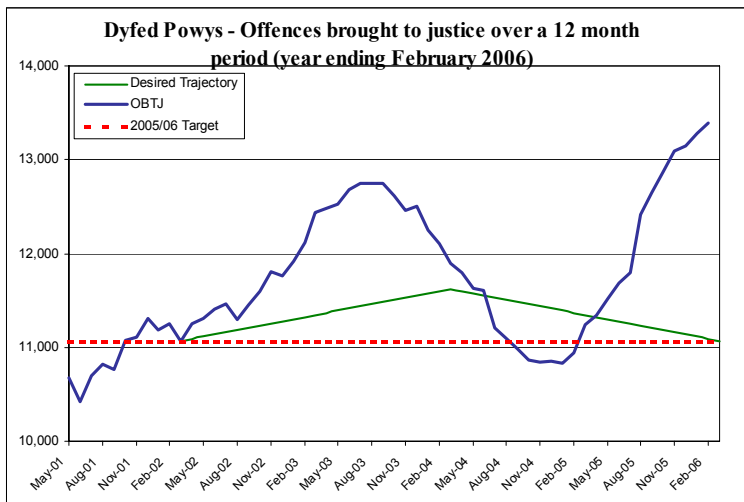


Additional comparative data is available on a quarterly basis. For further information on this or Iquanta contact Corporate Services (ext 6654).

# Narrowing the Justice Gap - OFFENCES BROUGHT TO JUSTICE & SANCTION DETECTIONS

**TARGET 2006/07 : Local Criminal Justice Board Measure – 10,655 total OBTJ (Offences Brought to Justice)**

## Total Offences Brought to Justice (OBTJ) – Force & MSF Comparisons



Offences brought to justice – 12 monthly data	TIC	PND	Formal Warnings	Cautions	Convictions	OBTJ
Baseline: Apr 01 – Mar 02	420	-	-	3,698	6,900	11,068
Latest Annual Data : March 05 – February 06	496	777	1,209	4,599	6,310	13,391
Change	+18%	-	-	+24%	-9%	+21%
<b>2005/06 Force Target (0%- 11,068 OBTJ)</b>	<b>YES</b>	<b>n/a</b>	<b>YES</b>	<b>YES</b>	<b>NO</b>	<b>YES</b>

## Divisional Contribution Toward OBTJ Volumes – Approximate Latest

Please note this data is provided as a **guide only** - it is provided here for information.

Approx OBTJ YTD	Apr 05 - Feb-06	Target**	Diff from Target
<b>Carmarthenshire</b>	4362	3643	<b>19.7%</b>
<b>Ceredigion</b>	1789	1592	<b>12.4%</b>
<b>Pembrokeshire</b>	3073	2696	<b>14.0%</b>
<b>Powys</b>	2994	2215	<b>35.2%</b>
<b>Force</b>	12218	10146	<b>20.4%</b>

Target Pro-Rata Based on 6 months performance

\*\* - This is the target profile required to attain the end of year target of 11,068 OBTJ. (The divisional target breakdown is based on mirroring 2004/05 contribution toward total force sanction detections).

## Sanction Detection Volume Performance YTD – Current Clear-Up Breakdown (Annual % Change)

The current volume of sanction detections (April 06 YTD) is up 32% on the same period last year to stand at 1,079 (up 258 from 821).

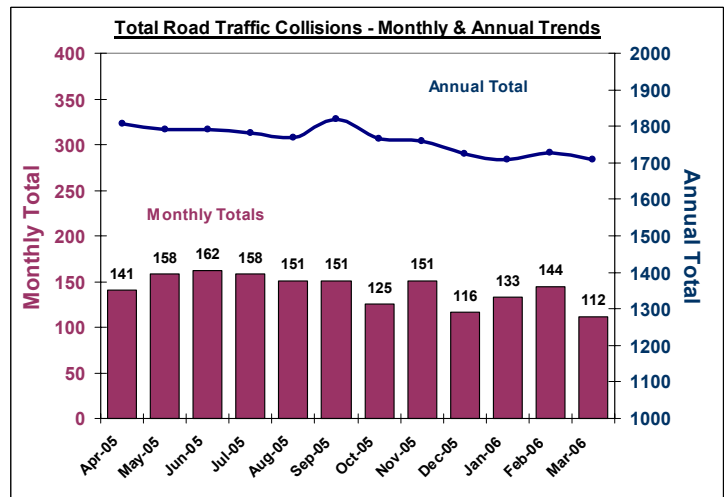
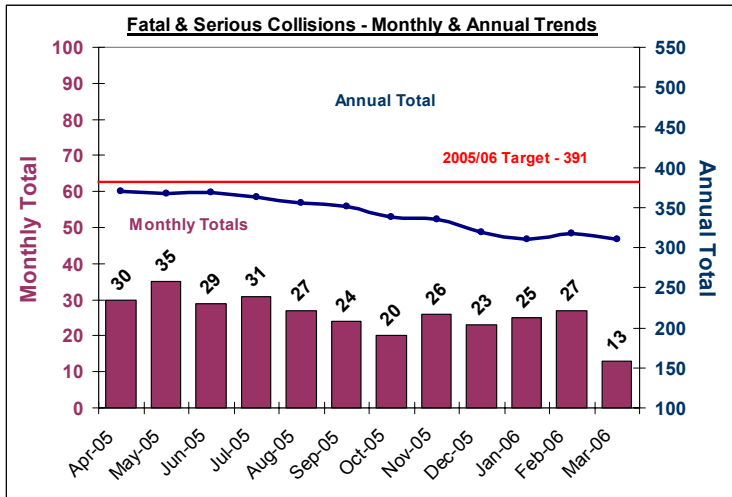
Area – April YTD	Charged	Summons	Cautioned	TIC	PND	F. Warning for Cannabis	Total Sanction Dets
<b>Carmarthenshire</b>	149 (-12%)	9 (3 SPLY)	140 (+77%)	29 (11 SPLY)	33 (-3%)	59 (15 SPLY)	419 (+34%)
<b>Ceredigion</b>	50 (-12%)	0 (1 SPLY)	77 (+51%)	1 (-75%)	12 (2 SPLY)	1 (-80%)	141 (+18%)
<b>Pembrokeshire</b>	89 (+14%)	0 (8 SPLY)	125 (+26%)	11 (-15%)	26 (13 SPLY)	4 (-60%)	255 (+15%)
<b>Powys</b>	110 (+41%)	7 (+75%)	92 (+37%)	1 (No Change)	22 (+83%)	32 (3 SPLY)	264 (+60%)
<b>Force</b>	398 (+4%)	16 (No Change)	434 (+47%)	42 (+44%)	93 (+52%)	96 (33 SPLY)	1079 (+32%)

# Road Traffic Collisions

March Monthly Data Latest available

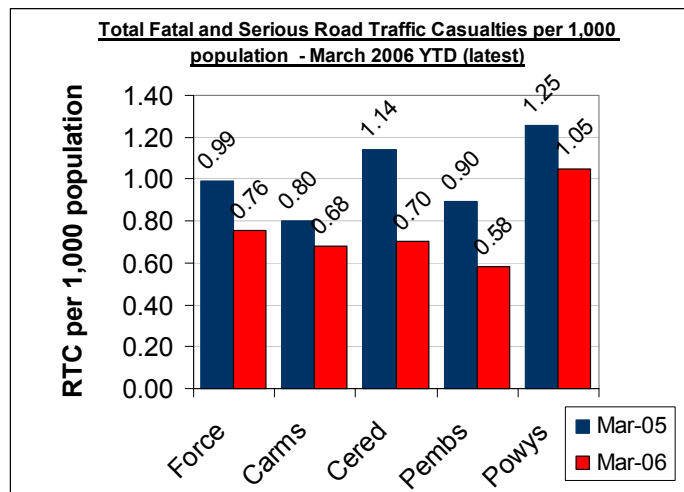
**TARGET 2006/07: 403 FATAL AND SERIOUS COLLISIONS & CASUALTIES (0.8 PER 1,000 POPULATION)**

## Road Traffic Collisions – Monthly & Annual Trends (March 06 - latest data)



Performance YTD (March 2006 YTD - latest)	FORCE	Carms	Cered	Pembs	Powys
Fatal Road Collisions YTD	45	18	3	8	16
Serious & Fatal Road Collisions YTD	310	94	47	55	114
<b>Indicator - Per 1,000 population</b>	<b>0.62</b>	<b>0.53</b>	<b>0.60</b>	<b>0.47</b>	<b>0.87</b>
<b>On-Target (0.8 end of year)</b>	<b>YES</b>	<b>YES</b>	<b>YES</b>	<b>YES</b>	<b>NO</b>
Fatal (SPLY)	44	14	6	6	18
Serious & Fatal (SPLY)	397	115	76	84	122

## Road Traffic Casualties – 2010 Target Progress



March 2006 YTD (latest)	Force	Carms	Cered	Pembs	Powys
Number of people killed or seriously injured casualties	381	121	55	68	137
At 2010 Target Level*	<b>YES</b>	<b>YES</b>	<b>YES</b>	<b>YES</b>	<b>YES</b>
Number of Children (<=15 yrs) killed or seriously injured	47	21	7	7	12
At 2010 Target Level*	<b>YES</b>	<b>YES</b>	<b>YES</b>	<b>YES</b>	<b>YES</b>
Number of persons with slight injuries	2188	803	347	496	542
At 2010 Target Level*	<b>NO</b>	<b>NO</b>	<b>NO</b>	<b>NO</b>	<b>NO</b>

\* 2010 Targets Established with Roads Policing Strategy, Operations Dept & National Road Policing Targets. Progress towards Pro-Rata year-end 2010 target illustrated here

Source: MAAP RTC Database 05/05/06

# Road Policing Performance

## SELECTED MEASURES OF ROADS POLICING ACTIVITY 2006/07

These measures constitute a range of selected measures to illustrate performance with respect to roads policing. The measures are:

- BCU Breakdown of ANPR Performance
- Project Laser – Most Similar Forces Comparisons for ANPR
- S.59 Seizure of Vehicles Used in an Anti-Social Manner

*Please note that performance data illustrated here is provisional and will develop further over the coming months.*

### BCU Breakdown of ANPR Performance

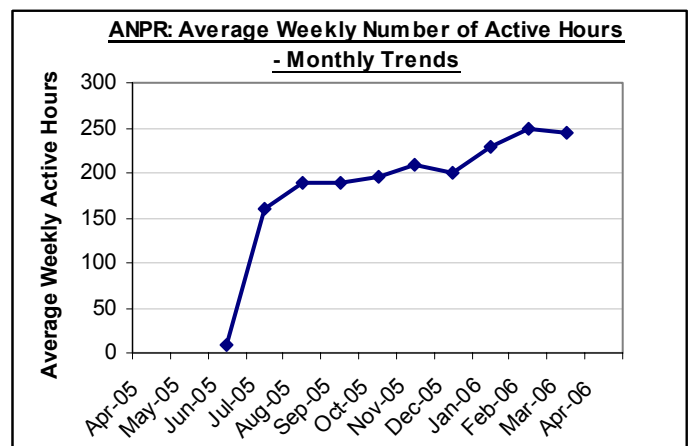
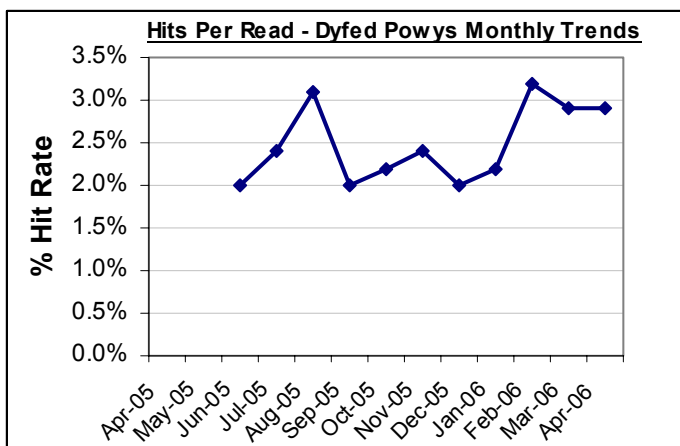
Covering the period: 01/04/2006 – 30/04/2006	Force*	Carms	Cered	Pembs	Powys	Ports
ANPR Reads	95194	9789	19830	19887	33688	12000
ANPR Hits	2759	260	494	568	1437	-
Arrests	42	2	0	3	37	-
Total No. Operational Hours	781.5	151.0	112.7	150.5	367.3	-
% Hits from Reads	2.9%	2.7%	2.5%	2.9%	4.3%	-
Hits per Operational Hour	3.5	1.7	4.4	3.8	3.9	-

During this period Carmarthenshire had one vehicle unavailable, but two others were available; Ceredigion had three vehicles functioning; Pembrokeshire had two mobile units available, and Powys had five vehicles and a targeting team available.

### Project Laser – ANPR Performance Comparisons

April 2005 – March 2006 YTD	Dyfed Powys	MSF Average
Active Hours	8,103	4,738
Dedicated Officer Hours	8,230	8,070
Hits	12,006	24,797
Reads	483,613	868,182
% Hits from Reads	2.5%	2.8%
No. Hits per Dedicated Officer Hour	1.5	4.2
No. Reads per 1,000 population	960	1147

Source: Project Laser 3 ANPR Report



### S.59 Seizure of Vehicles Used in an Anti-Social Manner

April 2005 – April 2006	Number of Incidents YTD				
Vehicles ...	Force	Carms	Cered	Pembs	Powys
Seized (+ SPLY)	0 (0)	0 (0)	0 (0)	0 (0)	0 (0)
Warned (+ SPLY)	2 (4)	0 (0)	0 (3)	2 (0)	0 (1)

Source: STORM Command & Control April 2006

# Local Policing Domain

2006/07: LOCAL POLICING DOMAIN – LOCAL PRIORITIES AND TARGETS

These priorities constitute a range of selected priorities to illustrate performance within the Local Policing Domain for 2006/07. These are:

## Terrorism and Domestic Extremism :

- Objective – To support the wider national endeavour in protecting the country from terrorism and domestic extremism.

## Class A Drugs :

- Objective – To proactively target and disrupt Class A drug supply and distribution networks across and beyond the Force area

## Violent Crime :

- Objective - To reduce levels of violent crime and seek to increase detection rates in this area.

## Anti-Social Behaviour :

- Objective - To proactively tackle anti-social behaviour in conjunction with partners, providing greater reassurance to the public.

Local Policing Domain Performance	FORCE	CARMS	CERED	PEMBS	POWYS
<b>Terrorism &amp; Domestic Extremism</b>	<i>N/A - national theme - not appropriate to set local measures</i>				
<b>Class-A Drugs</b>					
No. of class A drug offenders charged with trafficking <i>Target – To increase the numbers of offenders charged up 10%</i>					
YTD Total	10	3	6	0	1
SPLY	11	7	3	1	0
Diff	-1	-4	3	-1	1
% Change	-9.1%	-57.1%	100.0%	-100.0%	-
No. of class A drug offences resulting in offences brought to justice <i>Target – To increase OBJ by 10%</i>					
YTD Total	Data not available at present. Subject to two month time-lag				
<b>Violent Crime</b>					
No. Incidents involving victims of domestic violence who have been a victim in more than one incident in the previous 12 months (same offender involved) <i>Target – To reduce the number of repeat incidents by 7%</i>					
12 months total (May 05 - Apr 06)	833	270	61	344	158
SPLY	856	283	65	345	163
Diff	-23	-13	-4	-1	-5
% Change	-2.7%	-4.6%	-6.2%	-0.3%	-3.1%
Proportion of Violent Offences resulting in sanction detection <i>Target – To attain a detection rate of 58% (sanction detections)</i>					
YTD Total (Sanction Detections)	50.8%	48.9%	52.1%	53.2%	50.0%
<b>Anti-Social Behaviour</b>					
No. of Anti-social behaviour incidents reported to police <i>Target – To reduce the number of recorded incidents by 5%</i>					
YTD Total	2338	866	249	682	505
SPLY	1953	765	247	519	405
Diff	385	101	2	163	100
% Change	19.7%	13.2%	0.8%	31.4%	24.7%
No. of total criminal damage offences <i>Target – To reduce the numbers of recorded Criminal Damage offences by 3%</i>					
YTD Total	740	283	89	199	169
SPLY	662	234	71	189	168
Diff	78	49	18	10	1
% Change	11.8%	20.9%	25.4%	5.3%	0.6%

# PPAF Statutory Performance Indicator Summary

Reported Quarterly

HOME OFFICE POLICE PERFORMANCE ASSESSMENT FRAMEWORK MEASURES

This Data is Updated Quarterly – Latest: April 2005 – March 2006 (except where stated).

Activity	SPI Number	Indicator Description	2004/05 Performance	2005/06 Performance	Change	2005/06 End of Year Target
User Satisfaction Measures	1a	Satisfaction of victims of domestic burglary, violent crime, vehicle crime and road traffic collisions with respect to - a) making contact with the Police	92%	91%	-0.7%	92%
	1b	b) action taken by the Police	84%	83%	-0.2%	84%
	1c	c) Being kept informed of progress	70%	71%	1.2%	70%
	1d	d) Their treatment by staff	92%	91%	-0.5%	92%
	1e	e) the overall service provided	85%	84%	-0.9%	85%
Confidence	2a^	Using the BCS, the % of people who think their local police do a good job	NEW	56%	-	NEW
Fairness and Equality Measures	3a	Satisfaction of victims of racist incidents with respect to the overall service provided	79.2%	90.9%	11.7%	85%
	3b	From SPI 1(e), comparison of satisfaction for white users and users from visible minority ethnic groups with respect to the overall service provided.	White - 84.5% Ethnic - 71.7%	White - 84.0% Ethnic - 86.0%	White -0.5% Ethnic +14.3%	White - 85% Ethnic - 72%
	3c(i)	(i) % of PACE stop/searches which lead to arrest by ethnicity	White - 17.0% Ethnic - 27.2%	White - 14.1% Ethnic - 16.0%	White -2.9% Ethnic -11.2%	White - 20% Ethnic - 20%
	3d	Comparison of percentage detected of violence against the person offences by ethnicity of the victim (sanction detections)	White - 31.2% Ethnic - 31.5%	White - 58.7% Ethnic - 49.8%	White +27.5% Ethnic +18.3%	White - 31% Ethnic - 31%
	3e	Proportion of police recruits (ethnic) compared to the proportion of people from minority ethnic groups in the economically active population (EAP).	0.0%	1.3% of recruits 1.0% of EAP	-	NEW
	3f	Ratio of officers from minority ethnic groups resigning to all officer resignations	NEW	0.0%	NEW	NEW
	3g	% of female police officers compared to overall Force strength.	19.7%	21.1%	1.4%	19%
Measures of Crime Levels	4a^^	Using the British Crime Survey (a) the risk of personal crime; and	8%	8%	0.0%	8%
	4b^^	(b) the risk of household crime.	11%	11%	0.0%	11%
	5a	(a) Domestic Burglaries per 1,000 households.	5.06 (1042 crimes)	3.89 (801 crimes)	-1.17 (-241 crimes)	5.06 (1042 crimes)
	5b	(b) Violent crime per 1,000 population.	18.14 (8859 crimes)	16.26 (8191 crimes)	-1.88 (-494 crimes)	17.60 (8593 crimes)
	5c	(c) Robberies per 1,000 population.	0.08 (41 crimes)	0.08 (40 crimes)	-0.001 (-1 crime)	0.1 (48 crimes)
	5d	(d) Vehicle crime per 1,000 population.	4.77 (2331 crimes)	3.71 (1869 crimes)	-1.06 (-462 crimes)	4.77 (2331 crimes)
	5e^	(e) Life threatening crime and gun crime per 1,000 population.	0.28 (139 crimes)	0.38 (191 crimes)	+0.04 (+20 crimes)	0.28
	5f	(f) Acquisitive Crime per 1,000 population	NEW	6.52 (3280 crimes)	-	NEW
Offences Brought to Justice Measures (OBTJ)	6a	Number of notifiable/recorded offences resulting in convictions, caution or taken into consideration at court	10,730	13,391	+2661 OBTJ (+24.8%)	11,068
	6b	% of notifiable/recorded offences resulting in convictions, caution or taken into consideration at court	33.2%	43.8%	10.6%	NEW
Detection Measure	7a	% of notifiable/recorded offences resulting in charge, summons, caution or taken into consideration at court ('sanction detections')	32.5%	39.6%	7.1%	31%
Domestic Violence Measures	8a	Percentage of domestic violence incidents with a power of arrest where an arrest was made relating to the incident.	81.5%	83.7%	2.2%	80%
Traffic Measures	9a(i)	(i) Number of people killed in under 30 days or seriously injured in road traffic collisions	500 fatal or serious casualties	381 fatal or serious casualties	-119 casualties	391 fatal or serious casualties
	9a(ii)	(ii) Number of persons killed or seriously injured in road traffic collisions per 100million vehicle kilometres travelled.	10.12	7.71	-2.41	8.13
Quality of life Measures	10a^	Using the British Crime Survey a) fear of crime	9.0%	4.8%	-4.2%	10%
	10b^	Perceptions of anti-social behaviour; and	NEW	7.7%	-	NEW
	10c^	Perceptions of local drug use / drug dealing	NEW	22.5%	-	NEW
Resource Use Measures	11a	Percentage of police officer time spent on frontline duties	66.1%	TBC	-	68.5%
	12a	Delivery of cashable and non-cashable efficiency targets	NEW	NEW	-	NEW
	13a	Average number of working hours lost due to sickness per police officer.	92.8 hours	78.6 hours	-14.2 hours -15.3%	92.8 hours
	13b	Average number of working hours lost due to sickness by police staff.	80.7 hours	61.8 hours	-18.9 hours -23.4%	80.7 hours

^ - Year ending December 2005 Data: Latest Available

^^ - Data released July 2005: Latest Available