



# Heddlu Dyfed-Powys Police

## CRIME TRENDS UPDATE May 2006

### Contents:

Headline Statistics	2
Most Frequent Recorded Offences Profile	3
Recorded Crimes and Detection Rates	4
Domestic Burglaries and Detection Rates	5
Other Burglary and Detection Rates	6
Violent Crime and Detection Rates	7
Vehicle Crime and Detection Rates	8
Criminal Damage and Detection Rates	9
Drugs Statistics and Detection Rates	10
Section Level Sanction Detection Summary	11
Divisional Contribution to Targets	12
Domestic Incidents	16
User Satisfaction	17
Narrowing the Justice Gap	18
Road Traffic Collisions	19
Roads Policing Performance	20
Local Policing Domain	21
PPAF Statutory Performance Indicator Summary	22

Heddlu Dyfed Powys Police: Corporate Services

## Recorded Crime:

- Total Recorded Crime is up by 0.1% (+7 crimes) compared to the same period last year (SPLY) to stand at 5,614 crimes. The monthly figure for May 2006 stands at 2,793, a decrease of 4% (-125 offences) on the same month in 2005, and a 1% (-28 offences) decrease on the preceding month April 2006.
- Recorded detection performance has a total detection rate for the force at 42% (2,363 total detections) compared with 38% the previous year. The volume of total detections has increased by 10% (+215 detections). The sanction detection rate stands at 40% - this is consistent with the target rate of 31% (and compared with 32% recorded last year). The volume of sanction detections has increased by 451 or 25%.

## Domestic Burglary:

- Total Domestic Burglary offences are down by 3% (-4 crimes) compared to the same period last year (SPLY) to stand at 125 crimes. The monthly figure for May 2006 stands at 63, a decrease of 18% (-14 offences) on the same month in 2005, and a 2% (+1 offence) increase on the preceding month April 2006.
- Recorded detection performance remains consistent with last year, with the total detection rate for the force at 24% (30 detections) compared with 25% the previous year. The volume of total detections has decreased by 6% (-2). The sanction detection rate stands at 24% (no change from 24% last year) with the volume of sanction detections decreasing by 3% (-1).

## Violent Crimes:

- Total Violent crime offences are up by 5% (+76 crimes) compared to the same period last year (SPLY) to stand at 1579 crimes. The monthly figure for May 2006 stands at 750, a decrease of 6% (-45 offences) on the same month in 2005, and a 10% (-79 offences) decrease on the preceding month April 2006.
- Recorded detection performance stands at a total detection rate for the force of 58% (913 detections) up from 54% last year. The volume of total detections has increased by 12% (+96) over this period. Furthermore the sanction detection rate stands at 54% (compared with 41% last year) with the volume recorded up by 40% (+244 sanction detections).

## Vehicle Crime:

- Total Vehicle crime is up by 2% (+8 crimes) compared to the same period last year (SPLY) to stand at 362 crimes. The monthly figure for May 2006 stands at 210, a rise of 9% (+17 offences) on the same month in 2005, and a 38% increase (+58 offences) on the preceding month April 2006.
- Recorded total detection stands at 19% (68 detections) up from 12% the previous year. The volume of total detections has increased by 58% (+25) over this period. The sanction detection rate stands at 19% (compared with 9% last year) with the volume up on the previous year (+34 sanction detections or 103%).

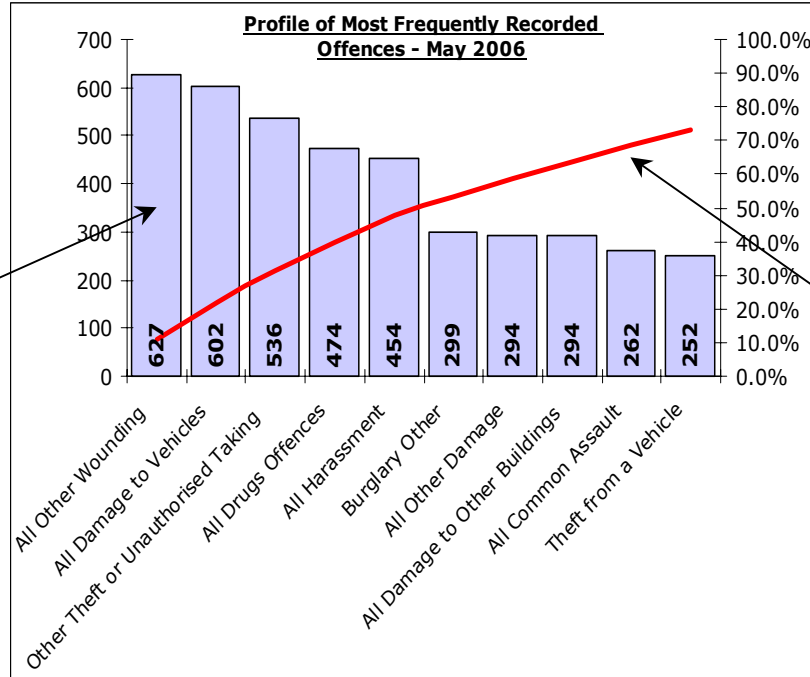
## Criminal Damage:

- Total Criminal Damage has decreased by 0.1% (-1 crime) compared to the same period last year (SPLY) to stand at 1409 (excl Arson & Threat to Commit CD). The monthly figure for May 2006 stands at 669, a fall of 11% (-79 offences) on the same month in 2005, and a decrease of 10% (-71) on the previous month April 2006.
- Recorded detection performance stands at a total detection rate for the force of 21% (301 detections) down from 24% last year. The volume of total detections has decreased by 12% (-41) over this period. The sanction detection rate stands at 20% (compared with 19% last year) with the volume up 4% over this period (+10 sanction detections).

# Most Frequent Recorded Offences Profile

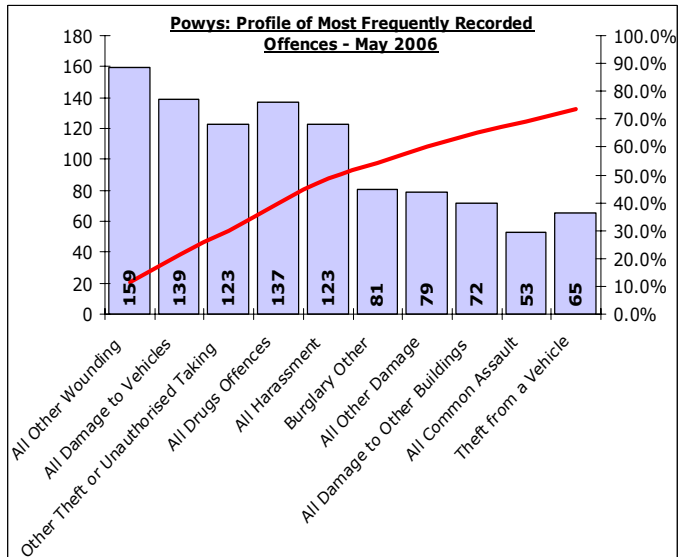
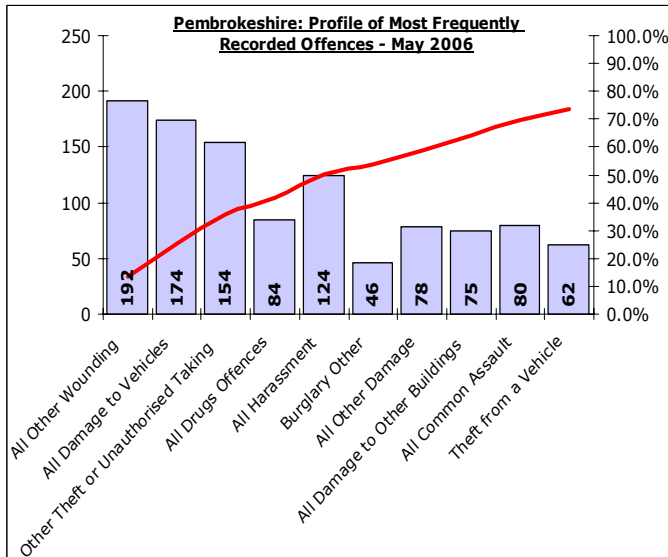
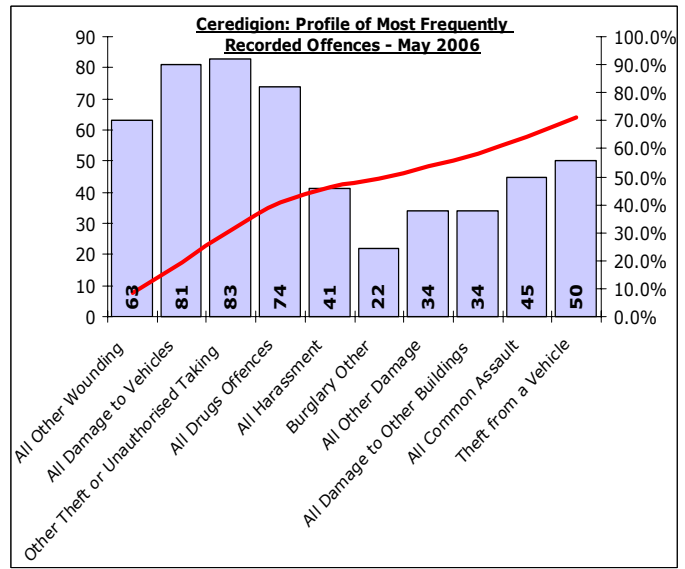
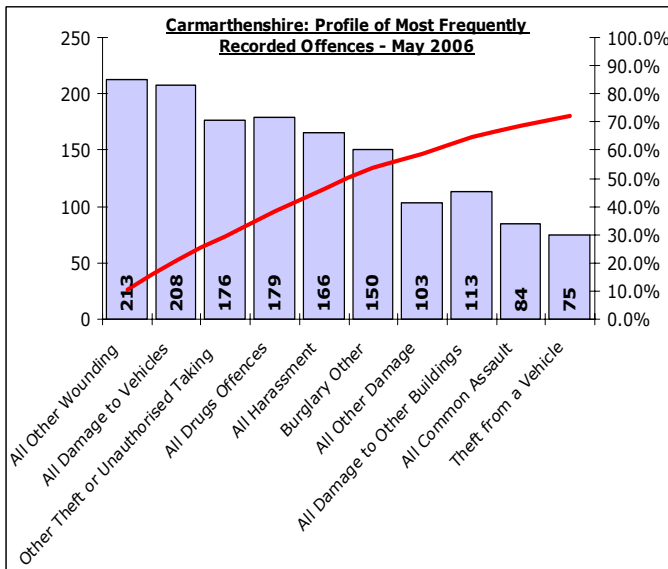
DYFED-POWYS POLICE

May 2006 YTD (Note : Divisional profiles are in the same sequence as forces' most frequent categories – for comparison)



Recorded offences in each category in order of volume.  
(Note these can include a number of sub-categories)

The cumulative contribution of these offence categories toward the total volume of offences recorded.



# Total Recorded Crime

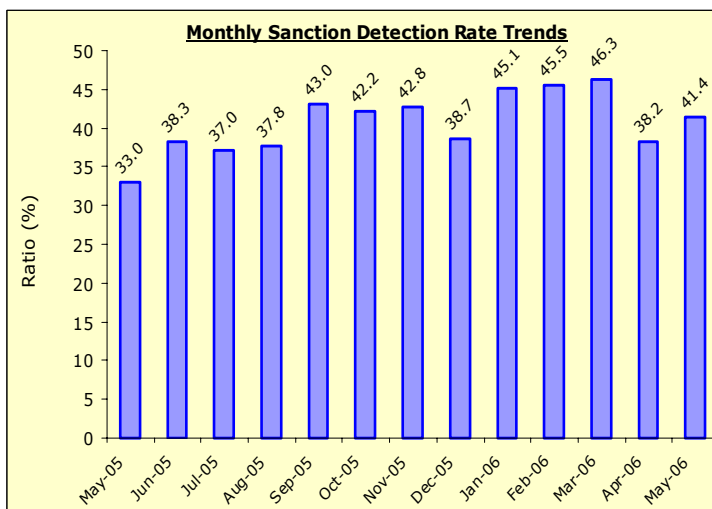
DYFED-POWYS POLICE

**TARGET 2006/07 : NO REDUCTION TARGET – 40% SANCTION DETECTION RATE (Local Criminal Justice Board Target 32.8%)**

## Recorded Crime Levels – May 2006

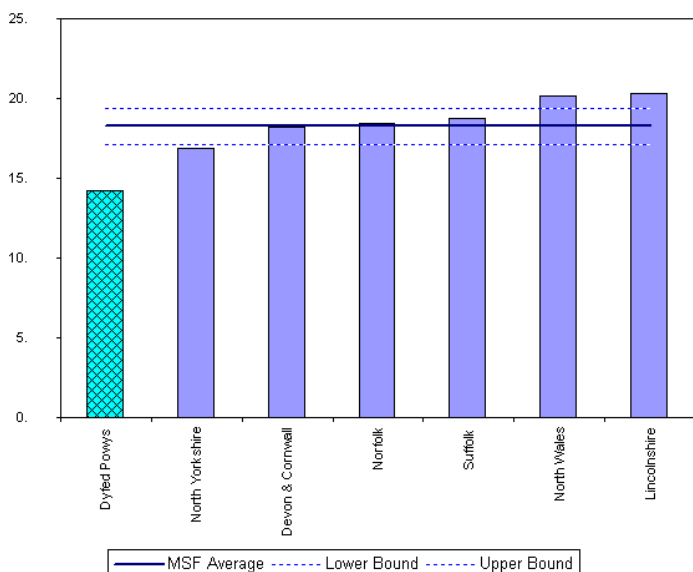


## Monthly Sanction Detection Rates – May 2006

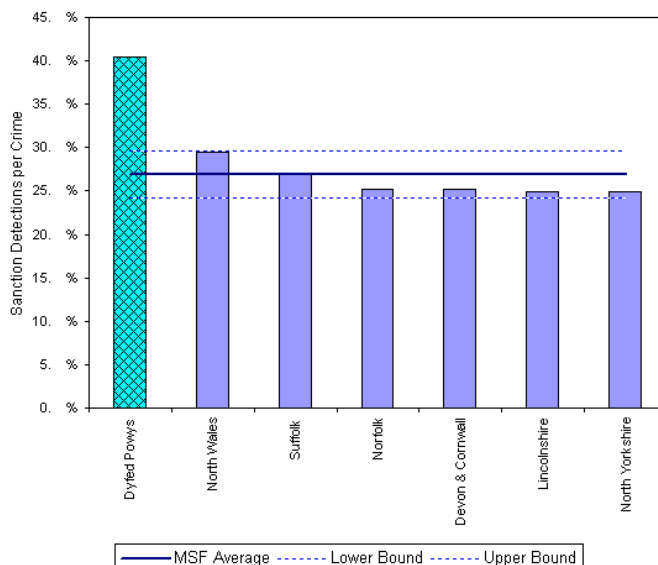


Total Recorded Crimes	May 2006 YTD			Detection Rates YTD		Annual Trends - SPLY		
	Crimes	Sanction Dets	Total Dets	Sanction %	Total %	Crimes SPLY	Change	% Change
<b>FORCE</b>	5,614	2,234	2,363	39.8%	42.1%	5,607	+ 7	+ 0.1%
<b>CARMS</b>	2,027	872	917	43.0%	45.2%	2,092	- 65	- 3.1%
<b>CERED</b>	741	299	324	40.4%	43.7%	738	+ 3	+ 0.4%
<b>PEMBS</b>	1,447	518	558	35.8%	38.6%	1,464	- 17	- 1.2%
<b>POWYS</b>	1,399	545	564	39.0%	40.3%	1,313	+ 86	+ 6.5%

## MSF – Crimes per 1000 Residents 01 February 2006 – 30 April 2006 (latest quarter)



## MSF – Sanction detections (annual): 01 May 2005 – 30 April 2006

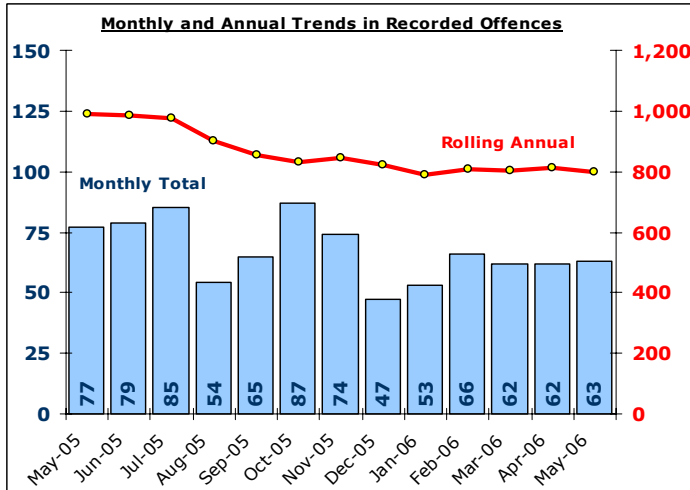


# Domestic Burglary

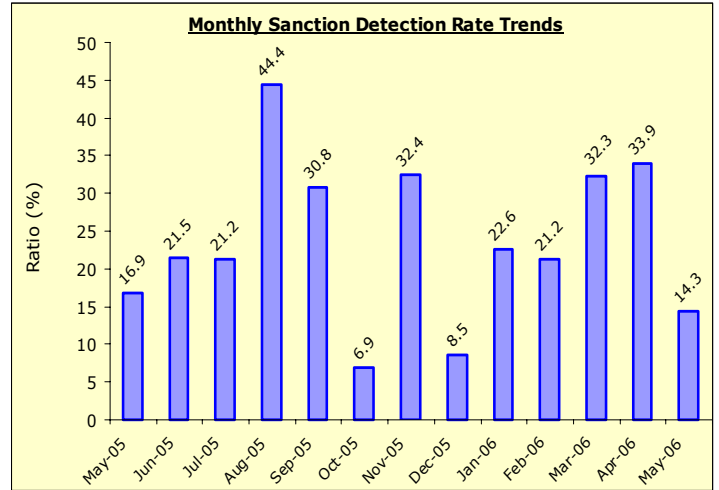
DYFED-POWYS POLICE

**TARGET 2006/07 : 2% reduction in offences & 23% total detection rate**

## Recorded Crime Levels – May 2006

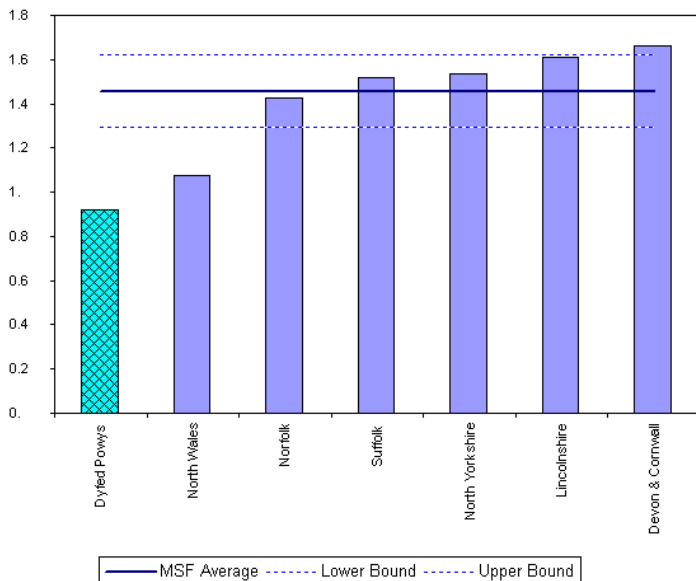


## Monthly Sanction Detection Rates – May 2006



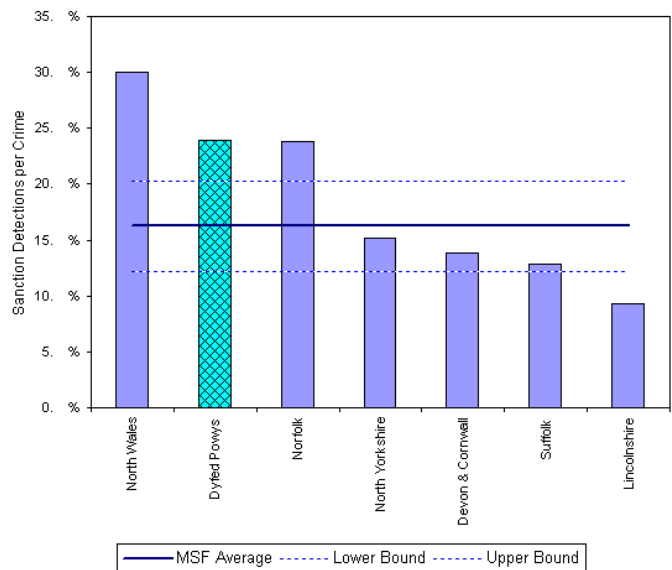
Total Domestic Burglary	May 2006 YTD			Detection Rates YTD		Annual Trends - SPLY		
	Crimes	Sanction Dets	Total Dets	Sanction %	Total %	Crimes SPLY	Change	% Change
<b>FORCE</b>	<b>125</b>	<b>30</b>	<b>30</b>	<b>33.9%</b>	<b>33.9%</b>	<b>129</b>	<b>- 4</b>	<b>- 3.1%</b>
<b>CARMS</b>	<b>50</b>	<b>17</b>	<b>17</b>	<b>56.5%</b>	<b>56.5%</b>	<b>51</b>	<b>- 1</b>	<b>- 2.0%</b>
<b>CERED</b>	<b>12</b>	<b>3</b>	<b>3</b>	<b>11.1%</b>	<b>11.1%</b>	<b>10</b>	<b>+ 2</b>	<b>+ 20.0%</b>
<b>PEMBS</b>	<b>28</b>	<b>3</b>	<b>3</b>	<b>20.0%</b>	<b>20.0%</b>	<b>31</b>	<b>- 3</b>	<b>- 9.7%</b>
<b>POWYS</b>	<b>35</b>	<b>7</b>	<b>7</b>	<b>26.7%</b>	<b>26.7%</b>	<b>37</b>	<b>- 2</b>	<b>- 5.4%</b>

## MSF – Crimes per 1000 Residents 01 February 2006 – 30 April 2006 (latest quarter)



Crimes per 1000 Households - Domestic Burglary - 01 Feb 2006 - 30 Apr 2006

## MSF – Sanction detections (annual): 01 May 2005 – 30 April 2006



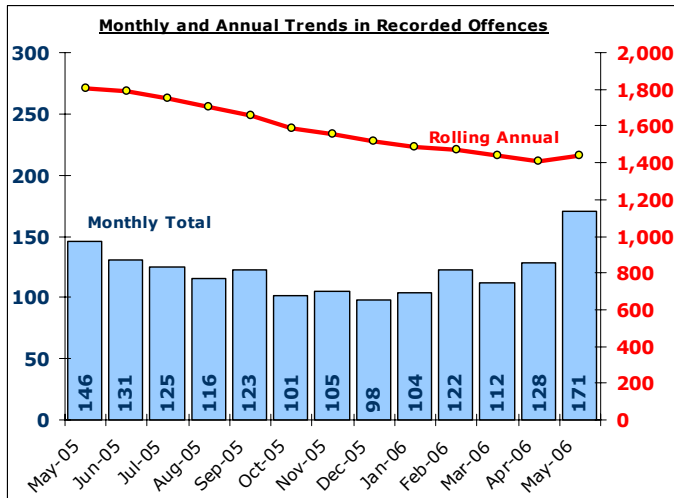
Bar chart MSF - Sanction Detections per Crime-Dyfed Powys-Domestic Burglary-01 May 2005 - 30 Apr 2006

# Other Burglary

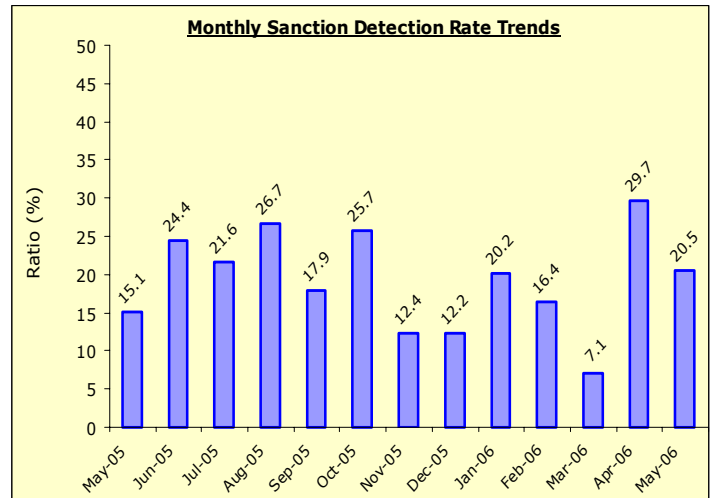
DYFED-POWYS POLICE

**TARGET 2006/07 : No Target**

## Recorded Crime Levels – May 2006

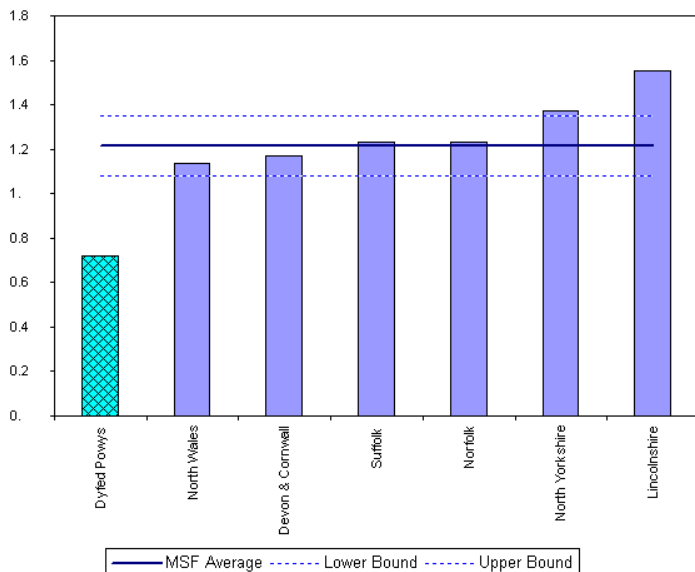


## Monthly Sanction Detection Rates – May 2006

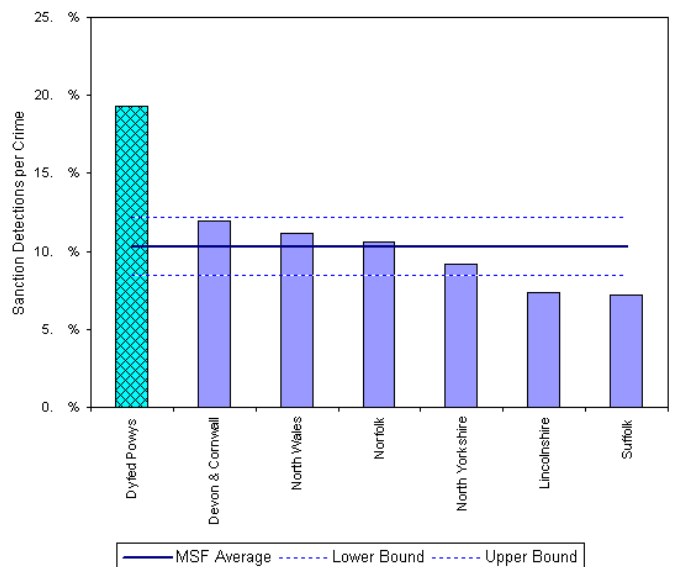


Total Other Burglary Crimes	May 2006 YTD			Detection Rates YTD		Annual Trends - SPLY		
	Crimes	Sanction Dets	Total Dets	Sanction %	Total %	Crimes SPLY	Change	% Change
<b>FORCE</b>	299	73	75	24.4%	25.1%	302	- 3	- 1.0%
<b>CARMS</b>	150	42	42	28.0%	28.0%	160	- 10	- 6.3%
<b>CERED</b>	22	7	8	31.8%	36.4%	25	- 3	- 12.0%
<b>PEMBS</b>	46	17	17	37.0%	37.0%	54	- 8	- 14.8%
<b>POWYS</b>	81	7	8	8.6%	9.9%	63	+ 18	+ 28.6%

## MSF – Crimes per 1000 Residents 01 February 2006 – 30 April 2006 (latest quarter)



## MSF – Sanction detections (annual): 01 May 2005 – 30 April 2006

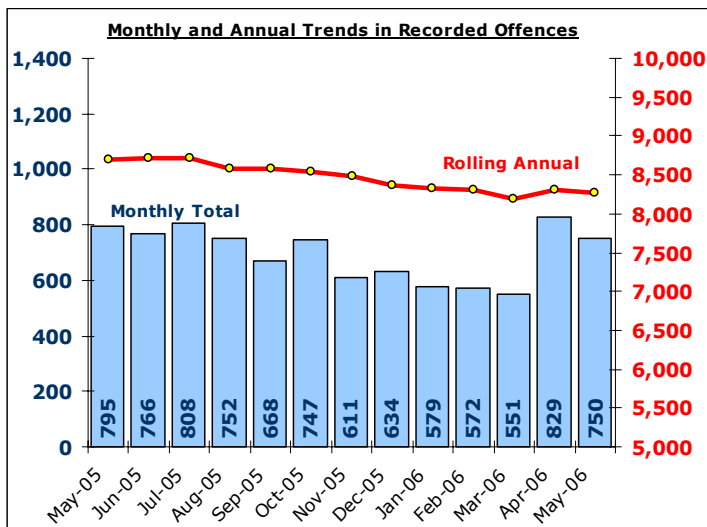


# Total Violent Crime

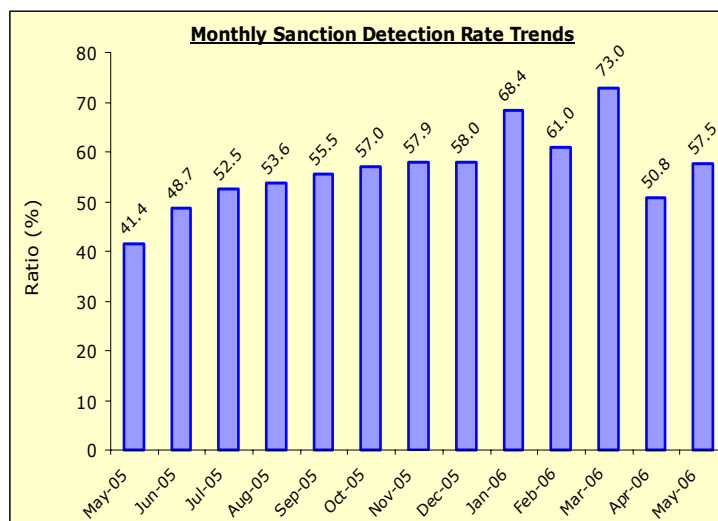
DYFED-POWYS POLICE

**TARGET 2006/07 – 3% reduction in offences & 58% sanction detection rate**

## Recorded Crime Levels – May 2006

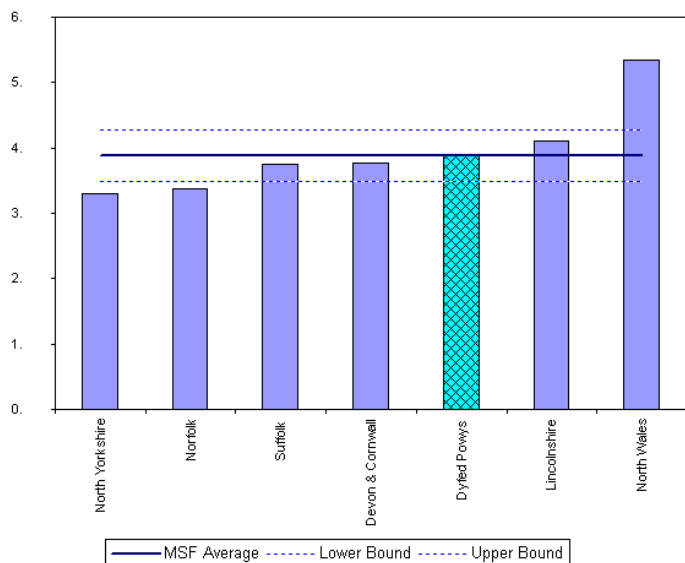


## Monthly Sanction Detection Rates – May 2006



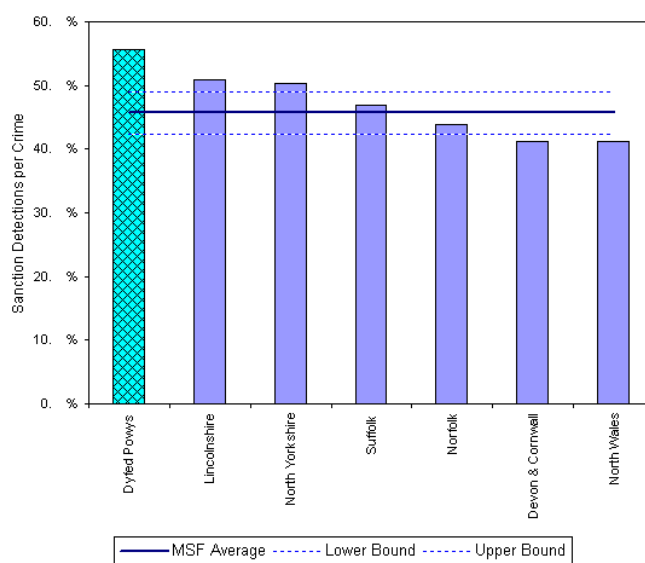
Total Violent Crimes	May 2006 YTD			Detection Rates YTD		Annual Trends - SPLY		
	Crimes	Sanction Dets	Total Dets	Sanction %	Total %	Crimes SPLY	Change	% Change
<b>FORCE</b>	<b>1,579</b>	<b>852</b>	<b>913</b>	<b>54.0%</b>	<b>57.8%</b>	<b>1,503</b>	<b>+ 76</b>	<b>+ 5.1%</b>
<b>CARMS</b>	<b>559</b>	<b>308</b>	<b>327</b>	<b>55.1%</b>	<b>58.5%</b>	<b>534</b>	<b>+ 25</b>	<b>+ 4.7%</b>
<b>CERED</b>	<b>189</b>	<b>93</b>	<b>107</b>	<b>49.2%</b>	<b>56.6%</b>	<b>195</b>	<b>- 6</b>	<b>- 3.1%</b>
<b>PEMBS</b>	<b>450</b>	<b>233</b>	<b>254</b>	<b>51.8%</b>	<b>56.4%</b>	<b>358</b>	<b>+ 92</b>	<b>+ 25.7%</b>
<b>POWYS</b>	<b>381</b>	<b>218</b>	<b>225</b>	<b>57.2%</b>	<b>59.1%</b>	<b>416</b>	<b>- 35</b>	<b>- 8.4%</b>

## MSF – Crimes per 1000 Residents 01 February 2006 – 30 April 2006 (latest quarter)



Crimes per 1000 Residents - Violent Crime - 01 Feb 2006 - 30 Apr 2006

## MSF – Sanction detections (annual): 01 May 2005 – 30 April 2006



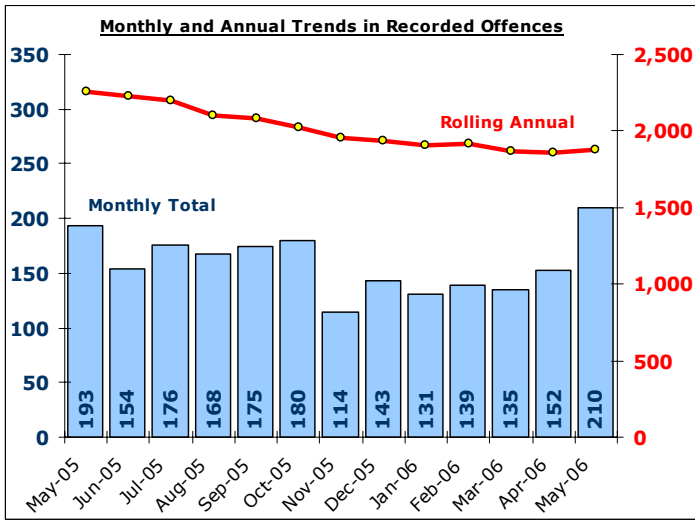
Bar chart MSF - Sanction Detections per Crime-Dyfed Powys-Violent Crime-01 May 2005 - 30 Apr 2006

# Total Vehicle Crime

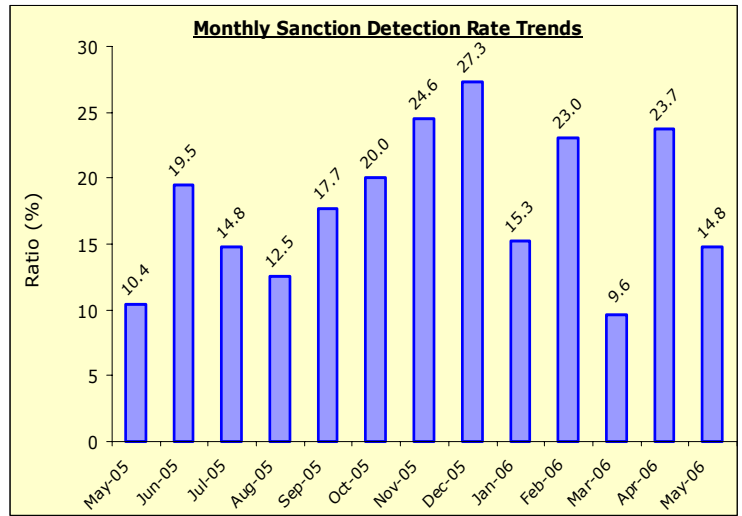
DYFED-POWYS POLICE

**TARGET 2006/07 : 2% reduction in offences & 16% sanction detection rate**

## Recorded Crime Levels – May 2006

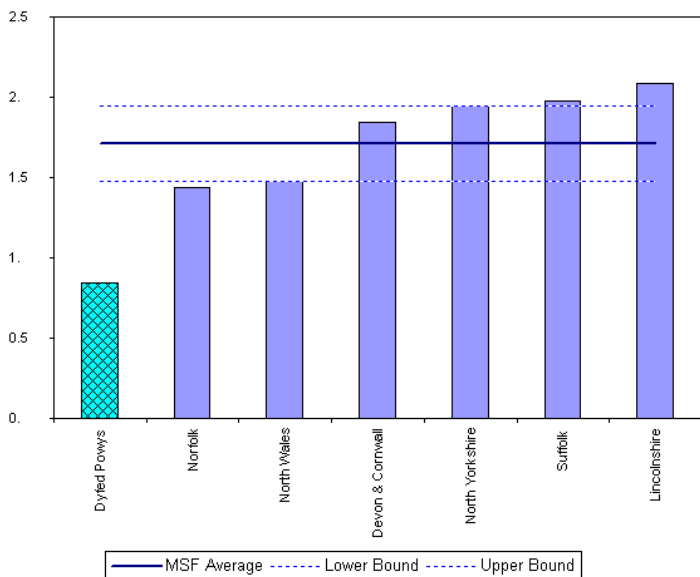


## Monthly Sanction Detection Rates – May 2006



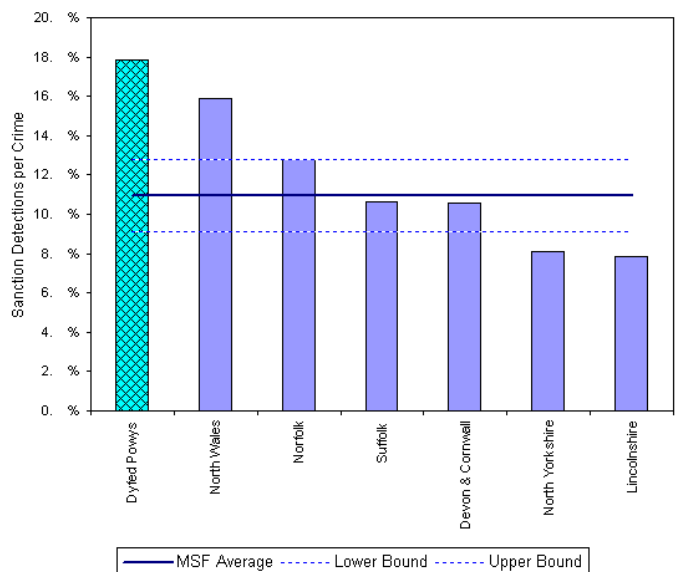
Total Vehicle Crimes	May 2006 YTD			Detection Rates YTD		Annual Trends - SPLY		
	Crimes	Sanction Dets	Total Dets	Sanction %	Total %	Crimes SPLY	Change	% Change
<b>FORCE</b>	<b>362</b>	<b>67</b>	<b>68</b>	<b>18.5%</b>	<b>18.8%</b>	<b>354</b>	<b>+ 8</b>	<b>+ 2.3%</b>
<b>CARMS</b>	<b>114</b>	<b>31</b>	<b>31</b>	<b>27.2%</b>	<b>27.2%</b>	<b>145</b>	<b>- 31</b>	<b>- 21.4%</b>
<b>CERED</b>	<b>62</b>	<b>8</b>	<b>9</b>	<b>12.9%</b>	<b>14.5%</b>	<b>42</b>	<b>+ 20</b>	<b>+ 47.6%</b>
<b>PEMBS</b>	<b>87</b>	<b>10</b>	<b>10</b>	<b>11.5%</b>	<b>11.5%</b>	<b>89</b>	<b>- 2</b>	<b>- 2.2%</b>
<b>POWYS</b>	<b>99</b>	<b>18</b>	<b>18</b>	<b>18.2%</b>	<b>18.2%</b>	<b>78</b>	<b>+ 21</b>	<b>+ 26.9%</b>

## MSF – Crimes per 1000 Residents 01 February 2006 – 30 April 2006 (latest quarter)



Crimes per 1000 Residents - Vehicle Crime (excluding Vehicle Interference) - 01 Feb 2006 - 30 Apr 2006

## MSF – Sanction detections (annual): 01 May 2005 – 30 April 2006



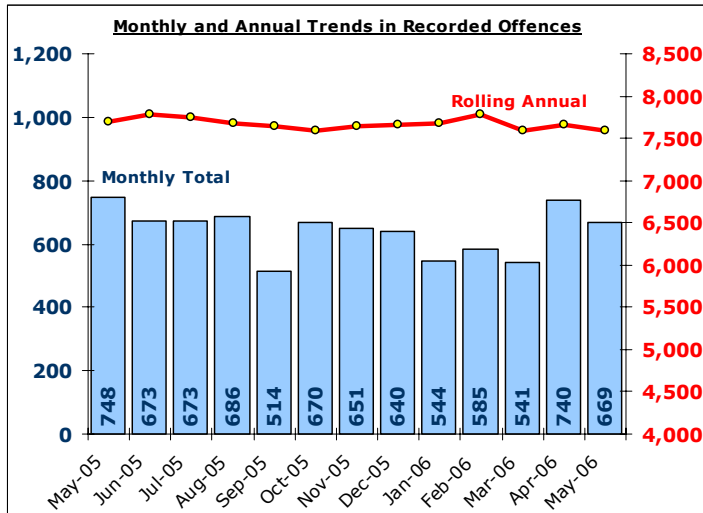
Bar chart MSF - Sanction Detections per Crime - Dyfed Powys - Vehicle Crime (excluding Vehicle Interference) - 01 May 2005 - 30 Apr 2006

# Total Criminal Damage

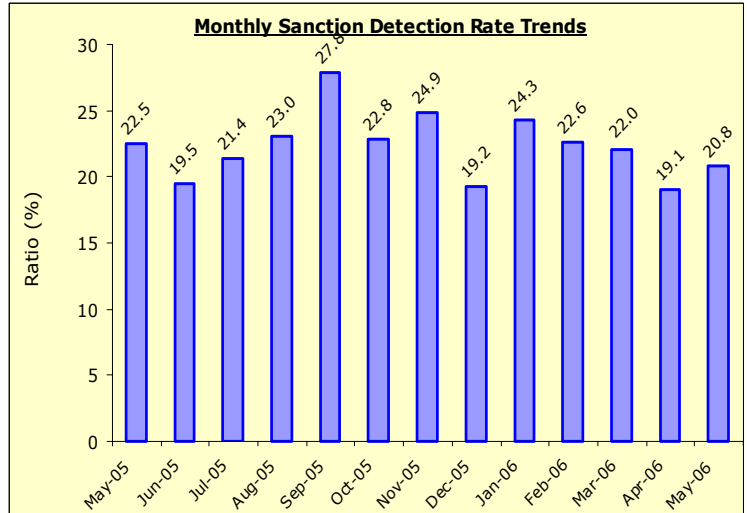
EXCLUDES ARSON % THREAT TO COMMIT CRIMINAL DAMAGE (HOC 56 & 59)

**TARGET 2005/06 : 3% reduction in offences**

## Recorded Crime Levels – May 2006



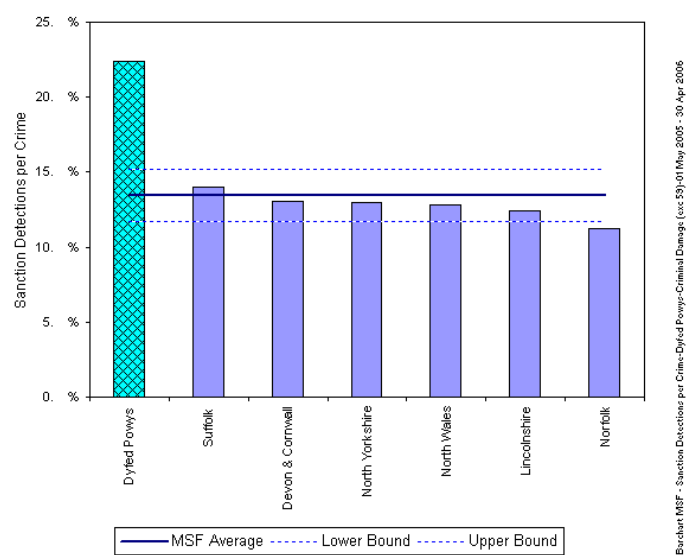
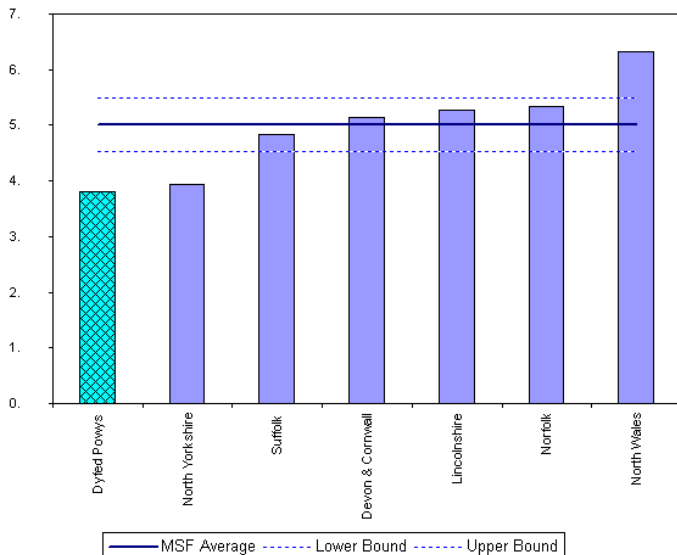
## Monthly Sanction Detection Rates – May 2006



Total Criminal Damage	May 2006 YTD			Detection Rates YTD		Annual Trends - SPLY		
	Crimes	Sanction Dets	Total Dets	Sanction %	Total %	Crimes SPLY	Change	% Change
<b>FORCE</b>	<b>1,409</b>	<b>280</b>	<b>301</b>	<b>19.9%</b>	<b>21.4%</b>	<b>1,410</b>	<b>- 1</b>	<b>- 0.1%</b>
<b>CARMS</b>	<b>500</b>	<b>90</b>	<b>98</b>	<b>18.0%</b>	<b>19.6%</b>	<b>483</b>	<b>+ 17</b>	<b>+ 3.5%</b>
<b>CERED</b>	<b>180</b>	<b>46</b>	<b>48</b>	<b>25.6%</b>	<b>26.7%</b>	<b>152</b>	<b>+ 28</b>	<b>+ 18.4%</b>
<b>PEMBS</b>	<b>390</b>	<b>71</b>	<b>80</b>	<b>18.2%</b>	<b>20.5%</b>	<b>466</b>	<b>- 76</b>	<b>- 16.3%</b>
<b>POWYS</b>	<b>339</b>	<b>73</b>	<b>75</b>	<b>21.5%</b>	<b>22.1%</b>	<b>309</b>	<b>+ 30</b>	<b>+ 9.7%</b>

## MSF – Crimes per 1000 Residents 01 February 2006 – 30 April 2006 (latest quarter)

## MSF – Sanction detections (annual): 01 May 2005 – 30 April 2006



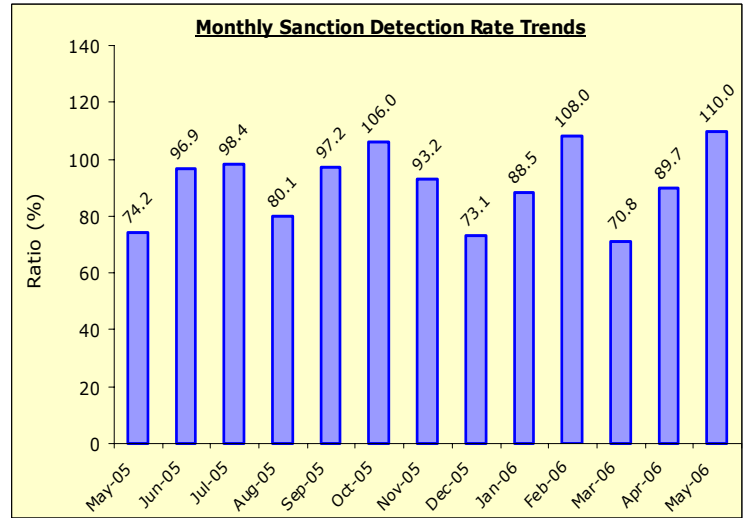
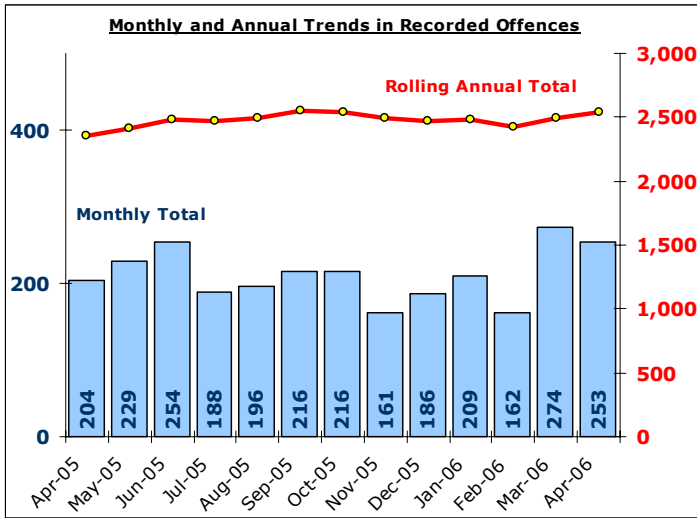
# Total Drug Offences

DYFED-POWYS POLICE

**TARGET 2005/06 : NO TARGET**

## Recorded Crime Levels – May 2006

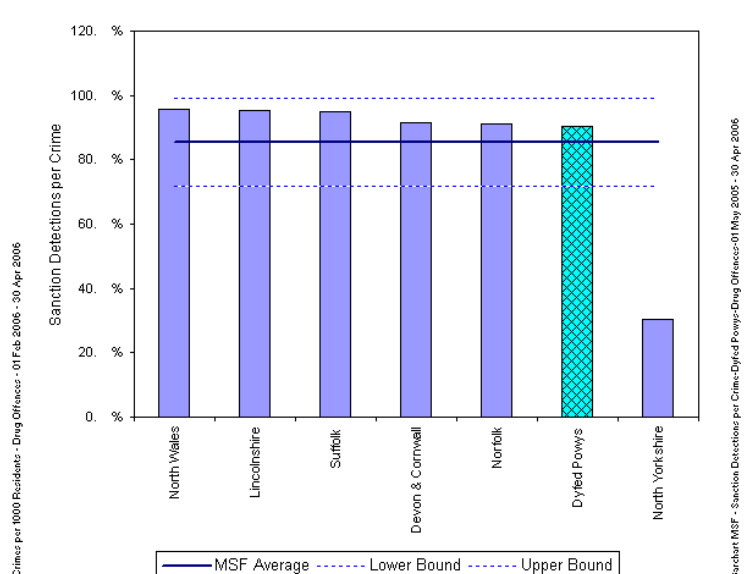
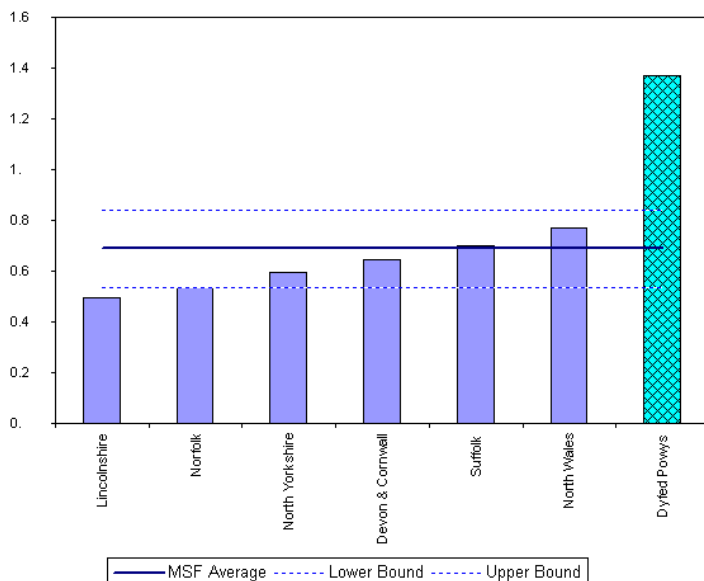
## Monthly Sanction Detection Rates – May 2006



Total Drug Offences	May 2006 YTD			Detection Rates YTD		Annual Trends - SPLY		
	Crimes	Sanction Dets	Total Dets	Sanction %	Total %	Crimes SPLY	Change	% Change
<b>FORCE</b>	<b>474</b>	<b>470</b>	<b>496</b>	<b>99.2%</b>	<b>104.6%</b>	<b>433</b>	<b>+ 41</b>	<b>+ 9.5%</b>
<b>CARMS</b>	<b>179</b>	<b>196</b>	<b>209</b>	<b>109.5%</b>	<b>116.8%</b>	<b>184</b>	<b>- 5</b>	<b>- 2.7%</b>
<b>CERED</b>	<b>74</b>	<b>74</b>	<b>76</b>	<b>100.0%</b>	<b>102.7%</b>	<b>88</b>	<b>- 14</b>	<b>- 15.9%</b>
<b>PEMBS</b>	<b>84</b>	<b>80</b>	<b>83</b>	<b>95.2%</b>	<b>98.8%</b>	<b>97</b>	<b>- 13</b>	<b>- 13.4%</b>
<b>POWYS</b>	<b>137</b>	<b>120</b>	<b>128</b>	<b>87.6%</b>	<b>93.4%</b>	<b>64</b>	<b>+ 73</b>	<b>+ 114.1%</b>

## MSF – Crimes per 1000 Residents 01 February 2006 – 30 April 2006 (latest quarter)

## MSF – Sanction detections (annual): 01 May 2005 – 30 April 2006



# Section Level Sanction Detection Summary

DYFED-POWYS POLICE

## Sanction Detections Performance May 2006 YTD: Total Recorded Crimes

Sanction Detection Rate	Recorded Crimes	Detected	Det Ratio	Recorded Crimes SPLY	Diff	% Change
<b>THE FORCE</b>	<b>5,614</b>	<b>2,234</b>	<b>39.8%</b>	<b>5,607</b>	<b>+ 7</b>	<b>+ 0.1%</b>
<b>Carmarthenshire</b>	<b>2,027</b>	<b>872</b>	<b>43.0%</b>	<b>2,092</b>	<b>- 65</b>	<b>- 3.1%</b>
Ammanford (AA)	248	97	39.1%	268	- 20	- 7.5%
Carmarthen (AC)	462	208	45.0%	497	- 35	- 7.0%
Llanelli (AL)	1,008	443	43.9%	1,065	- 57	- 5.4%
Towy Gwendraeth (AT)	309	124	40.1%	262	+ 47	+ 17.9%
<b>Ceredigion</b>	<b>741</b>	<b>299</b>	<b>40.4%</b>	<b>738</b>	<b>+ 3</b>	<b>+ 0.4%</b>
Aberystwyth (BA)	390	163	41.8%	416	- 26	- 6.3%
Aberaeron (BB)	72	32	44.4%	67	+ 5	+ 7.5%
Cardigan (BC)	186	64	34.4%	177	+ 9	+ 5.1%
Lampeter (BL)	93	40	43.0%	78	+ 15	+ 19.2%
<b>Pembrokeshire</b>	<b>1,447</b>	<b>518</b>	<b>35.8%</b>	<b>1,464</b>	<b>- 17</b>	<b>- 1.2%</b>
Fishguard (CF)	192	70	36.5%	139	+ 53	+ 38.1%
Haverfordwest (CH)	368	140	38.0%	342	+ 26	+ 7.6%
Milford Haven (CM)	293	134	45.7%	261	+ 32	+ 12.3%
Pembroke Dock (CP)	306	97	31.7%	438	- 132	- 30.1%
Tenby (CT)	288	77	26.7%	284	+ 4	+ 1.4%
<b>Powys</b>	<b>1,399</b>	<b>545</b>	<b>39.0%</b>	<b>1,313</b>	<b>+ 86</b>	<b>+ 6.5%</b>
Brecon (DB)	316	107	33.9%	340	- 24	- 7.1%
Llandrindod Wells (DL)	236	84	35.6%	221	+ 15	+ 6.8%
Newtown (DN)	450	212	47.1%	393	+ 57	+ 14.5%
Welshpool (DW)	285	112	39.3%	248	+ 37	+ 14.9%
Ystradgynlais (DY)	112	30	26.8%	111	+ 1	+ 0.9%

## Sanction Detection Performance May 2006 YTD: Domestic Burglary, Violent Crime & Vehicle Crime

Sanction Detections	Total Domestic Burglary			Total Violent Crime			Total Vehicle Crime		
	Recorded Crimes	Detected	Det Ratio	Recorded Crimes	Detected	Det Ratio	Recorded Crimes	Detected	Det Ratio
<b>THE FORCE</b>	<b>125</b>	<b>30</b>	<b>24.0%</b>	<b>1,579</b>	<b>852</b>	<b>54.0%</b>	<b>362</b>	<b>67</b>	<b>18.5%</b>
<b>Carmarthenshire</b>	<b>50</b>	<b>17</b>	<b>34.0%</b>	<b>559</b>	<b>308</b>	<b>55.1%</b>	<b>114</b>	<b>31</b>	<b>27.2%</b>
Ammanford (AA)	6	0	0.0%	66	26	39.4%	16	2	12.5%
Carmarthen (AC)	6	3	50.0%	137	71	51.8%	17	2	11.8%
Llanelli (AL)	32	12	37.5%	280	175	62.5%	54	20	37.0%
Towy Gwendraeth (AT)	6	2	33.3%	76	36	47.4%	27	7	25.9%
<b>Ceredigion</b>	<b>12</b>	<b>3</b>	<b>25.0%</b>	<b>189</b>	<b>93</b>	<b>49.2%</b>	<b>62</b>	<b>8</b>	<b>12.9%</b>
Aberystwyth (BA)	9	2	22.2%	90	40	44.4%	20	3	15.0%
Aberaeron (BB)	1	0	0.0%	20	12	60.0%	7	1	14.3%
Cardigan (BC)	1	1	100.0%	51	29	56.9%	32	4	12.5%
Lampeter (BL)	1	0	0.0%	28	12	42.9%	3	0	0.0%
<b>Pembrokeshire</b>	<b>28</b>	<b>3</b>	<b>10.7%</b>	<b>450</b>	<b>233</b>	<b>51.8%</b>	<b>87</b>	<b>10</b>	<b>11.5%</b>
Fishguard (CF)	5	1	20.0%	66	37	56.1%	7	0	0.0%
Haverfordwest (CH)	9	1	11.1%	127	61	48.0%	17	1	5.9%
Milford Haven (CM)	4	0	0.0%	86	52	60.5%	11	2	18.2%
Pembroke Dock (CP)	7	1	14.3%	102	53	52.0%	21	1	4.8%
Tenby (CT)	3	0	0.0%	69	30	43.5%	31	6	19.4%
<b>Powys</b>	<b>35</b>	<b>7</b>	<b>20.0%</b>	<b>381</b>	<b>218</b>	<b>57.2%</b>	<b>99</b>	<b>18</b>	<b>18.2%</b>
Brecon (DB)	9	2	22.2%	80	50	62.5%	20	4	20.0%
Llandrindod Wells (DL)	5	0	0.0%	49	34	69.4%	16	2	12.5%
Newtown (DN)	6	3	50.0%	157	89	56.7%	39	11	28.2%
Welshpool (DW)	9	2	22.2%	71	36	50.7%	14	1	7.1%
Ystradgynlais (DY)	6	0	0.0%	24	9	37.5%	10	0	0.0%

# Target Contribution Summary - Carmarthenshire

DYFED-POWYS POLICE

**GREEN/RED** indicates current performance **consistent** or **not consistent** with force target reduction & detection rate

<b>CARMARTHENSHIRE</b>		<b>April-May YTD</b>		<b>Last Year</b>		<b>Indicator</b>
<b>CRIME</b>	Performance	Indicator	Performance	Indicator	Change & Detection	
Total Crime Recorded (per 1,000 population)	2030	11.7	2091	12.1	-2.9%	
Total Detections (% rate)	917	45.2%	775	37.1%	45.2%	
Burglary Dwelling (per 1,000 households)	50	0.7	51	0.7	-2.0%	
Total Detections (% rate)	17	34.0%	7	13.7%	34.0%	
Total Violent Crime (per 1,000 population)	560	3.2	533	3.1	5.1%	
Total Detections (% rate)	327	58.4%	294	55.2%	58.4%	
Autocrime per (1,000 population)	114	0.7	145	0.8	-21.4%	
Total Detections (% rate)	31	27.2%	15	10.3%	27.2%	
<b>Ammanford</b>		<b>April-May YTD</b>		<b>Last Year</b>		<b>Indicator</b>
<b>CRIME</b>	Performance	Indicator	Performance	Indicator	Change & Detection	
Total Crime Recorded (per 1,000 population)	248	7.6	268	8.2	-7.5%	
Total Detections (% rate)	105	42.3%	128	47.8%	42.3%	
Burglary Dwelling (per 1,000 households)	6	0.4	4	0.3	50.0%	
Total Detections (% rate)	0	0.0%	1	25.0%	0.0%	
Total Violent Crime (per 1,000 population)	66	2.0	54	1.7	22.2%	
Total Detections (% rate)	31	47.0%	33	61.1%	47.0%	
Autocrime per (1,000 population)	16	0.5	17	0.5	-5.9%	
Total Detections (% rate)	2	12.5%	2	11.8%	12.5%	
<b>Carmarthen</b>		<b>April-May YTD</b>		<b>Last Year</b>		<b>Indicator</b>
<b>CRIME</b>	Performance	Indicator	Performance	Indicator	Change & Detection	
Total Crime Recorded (per 1,000 population)	462	9.3	496	10.0	-6.9%	
Total Detections (% rate)	222	48.1%	213	42.9%	48.1%	
Burglary Dwelling (per 1,000 households)	6	0.3	9	0.4	-33.3%	
Total Detections (% rate)	3	50.0%	4	44.4%	50.0%	
Total Violent Crime (per 1,000 population)	137	2.8	143	2.9	-4.2%	
Total Detections (% rate)	74	54.0%	86	60.1%	54.0%	
Autocrime per (1,000 population)	17	0.3	26	0.5	-34.6%	
Total Detections (% rate)	2	11.8%	1	3.8%	11.8%	
<b>Llanelli</b>		<b>April-May YTD</b>		<b>Last Year</b>		<b>Indicator</b>
<b>CRIME</b>	Performance	Indicator	Performance	Indicator	Change & Detection	
Total Crime Recorded (per 1,000 population)	1008	16.7	1064	17.6	-5.3%	
Total Detections (% rate)	461	45.7%	353	33.2%	45.7%	
Burglary Dwelling (per 1,000 households)	32	1.2	29	1.1	10.3%	
Total Detections (% rate)	12	37.5%	2	6.9%	37.5%	
Total Violent Crime (per 1,000 population)	280	4.6	264	4.4	6.1%	
Total Detections (% rate)	185	66.1%	142	53.8%	66.1%	
Autocrime per (1,000 population)	54	0.9	84	1.4	-35.7%	
Total Detections (% rate)	20	37.0%	9	10.7%	37.0%	
<b>Towv/Gwendraeth</b>		<b>April-May YTD</b>		<b>Last Year</b>		<b>Indicator</b>
<b>CRIME</b>	Performance	Indicator	Performance	Indicator	Change & Detection	
Total Crime Recorded (per 1,000 population)	309	10.2	262	8.7	17.9%	
Total Detections (% rate)	129	41.7%	81	30.9%	41.7%	
Burglary Dwelling (per 1,000 households)	6	0.5	8	0.6	-25.0%	
Total Detections (% rate)	2	33.3%	0	0.0%	33.3%	
Total Violent Crime (per 1,000 population)	76	2.5	72	2.4	5.6%	
Total Detections (% rate)	37	48.7%	33	45.8%	48.7%	
Autocrime per (1,000 population)	27	0.9	18	0.6	50.0%	
Total Detections (% rate)	7	25.9%	3	16.7%	25.9%	

# Target Contribution Summary - Ceredigion

DYFED-POWYS POLICE

**GREEN/RED** indicates current performance **consistent** or **not consistent** with force target reduction & detection rate

CEREDIGION		April-May YTD		Last Year		Indicator
<b>CRIME</b>	Performance	Indicator	Performance	Indicator	Change & Detection	
Total Crime Recorded (per 1,000 population)	741	9.9	737	9.8	0.5%	
Total Detections (% rate)	324	43.7%	313	42.5%	43.7%	
Burglary Dwelling (per 1,000 households)	12	0.4	10	0.3	20.0%	
Total Detections (% rate)	3	25.0%	3	30.0%	25.0%	
Total Violent Crime (per 1,000 population)	189	2.5	195	2.6	-3.1%	
Total Detections (% rate)	107	56.6%	106	54.4%	56.6%	
Autocrime per (1,000 population)	62	0.8	42	0.6	47.6%	
Total Detections (% rate)	9	14.5%	7	16.7%	14.5%	
Ceredigion North		April-May YTD		Last Year		Indicator
<b>CRIME</b>	Performance	Indicator	Performance	Indicator	Change & Detection	
Total Crime Recorded (per 1,000 population)	390	12.3	416	13.1	-6.3%	
Total Detections (% rate)	172	44.1%	191	45.9%	44.1%	
Burglary Dwelling (per 1,000 households)	9	0.7	6	0.5	50.0%	
Total Detections (% rate)	2	22.2%	3	50.0%	22.2%	
Total Violent Crime (per 1,000 population)	90	2.8	110	3.5	-18.2%	
Total Detections (% rate)	45	50.0%	69	62.7%	50.0%	
Autocrime per (1,000 population)	20	0.6	17	0.5	17.6%	
Total Detections (% rate)	3	15.0%	2	11.8%	15.0%	
Ceredigion South		April-May YTD		Last Year		Indicator
<b>CRIME</b>	Performance	Indicator	Performance	Indicator	Change & Detection	
Total Crime Recorded (per 1,000 population)	351	8.2	321	7.5	9.3%	
Total Detections (% rate)	152	43.3%	122	38.0%	43.3%	
Burglary Dwelling (per 1,000 households)	3	0.2	4	0.2	-25.0%	
Total Detections (% rate)	1	33.3%	0	0.0%	33.3%	
Total Violent Crime (per 1,000 population)	99	2.3	85	2.0	16.5%	
Total Detections (% rate)	62	62.6%	37	43.5%	62.6%	
Autocrime per (1,000 population)	42	1.0	25	0.6	68.0%	
Total Detections (% rate)	6	14.3%	5	20.0%	14.3%	

Ceredigion South is an area used for comparison purposes only. It incorporates the three section areas of Lampeter/Aberaeron and Cardigan. Details on these three discrete areas are also included here for information.

Aberaeron		April-May YTD		Last Year		Indicator
<b>CRIME</b>	Performance	Indicator	Performance	Indicator	Change & Detection	
Total Crime Recorded (per 1,000 population)	72	5.7	67	5.3	7.5%	
Total Detections (% rate)	35	48.6%	28	41.8%	48.6%	
Burglary Dwelling (per 1,000 households)	1	0.2	0	0.0	#DIV/0!	
Total Detections (% rate)	0	0.0%	0	#DIV/0!	0.0%	
Total Violent Crime (per 1,000 population)	20	1.6	12	0.9	66.7%	
Total Detections (% rate)	14	70.0%	9	75.0%	70.0%	
Autocrime per (1,000 population)	7	0.6	6	0.5	16.7%	
Total Detections (% rate)	1	14.3%	1	16.7%	14.3%	
Cardigan		April-May YTD		Last Year		Indicator
<b>CRIME</b>	Performance	Indicator	Performance	Indicator	Change & Detection	
Total Crime Recorded (per 1,000 population)	186	9.9	176	9.3	5.7%	
Total Detections (% rate)	71	38.2%	58	33.0%	38.2%	
Burglary Dwelling (per 1,000 households)	1	0.1	2	0.2	-50.0%	
Total Detections (% rate)	1	100.0%	0	0.0%	100.0%	
Total Violent Crime (per 1,000 population)	51	2.7	53	2.8	-3.8%	
Total Detections (% rate)	33	64.7%	19	35.8%	64.7%	
Autocrime per (1,000 population)	32	1.7	10	0.5	220.0%	
Total Detections (% rate)	4	12.5%	1	10.0%	12.5%	
Lampeter		April-May YTD		Last Year		Indicator
<b>CRIME</b>	Performance	Indicator	Performance	Indicator	Change & Detection	
Total Crime Recorded (per 1,000 population)	93	8.0	78	6.7	19.2%	
Total Detections (% rate)	46	49.5%	36	46.2%	49.5%	
Burglary Dwelling (per 1,000 households)	1	0.2	2	0.4	-50.0%	
Total Detections (% rate)	0	0.0%	0	0.0%	0.0%	
Total Violent Crime (per 1,000 population)	28	2.4	20	1.7	40.0%	
Total Detections (% rate)	15	53.6%	9	45.0%	53.6%	
Autocrime per (1,000 population)	3	0.3	9	0.8	-66.7%	
Total Detections (% rate)	1	33.3%	3	33.3%	33.3%	

# Target Contribution Summary - Pembrokeshire

DYFED-POWYS POLICE

**GREEN/RED** indicates current performance **consistent** or **not consistent** with force target reduction & total detection rate

PEMBROKESHIRE		April-May YTD		Last Year		Indicator
<b>CRIME</b>	Performance	Indicator	Performance	Indicator	Change & Detection	
Total Crime Recorded (per 1,000 population)	1447	12.7	1464	12.8	-1.2%	
Total Detections (% rate)	558	38.6%	583	39.8%	38.6%	
Burglary Dwelling (per 1,000 households)	28	0.6	31	0.6	-9.7%	
Total Detections (% rate)	3	10.7%	15	48.4%	10.7%	
Total Violent Crime (per 1,000 population)	450	3.9	358	3.1	25.7%	
Total Detections (% rate)	254	56.4%	207	57.8%	56.4%	
Autocrime per (1,000 population)	87	0.8	89	0.8	-2.2%	
Total Detections (% rate)	10	11.5%	12	13.5%	11.5%	
Fishguard		April-May YTD		Last Year		Indicator
<b>CRIME</b>	Performance	Indicator	Performance	Indicator	Change & Detection	
Total Crime Recorded (per 1,000 population)	192	7.3	139	5.2	38.1%	
Total Detections (% rate)	72	37.5%	49	35.3%	37.5%	
Burglary Dwelling (per 1,000 households)	5	0.4	0	0.0	#DIV/0!	
Total Detections (% rate)	1	20.0%	1	#DIV/0!	20.0%	
Total Violent Crime (per 1,000 population)	66	2.5	30	1.1	120.0%	
Total Detections (% rate)	38	57.6%	19	63.3%	57.6%	
Autocrime per (1,000 population)	7	0.3	13	0.5	-46.2%	
Total Detections (% rate)	0	0.0%	2	15.4%	0.0%	
Haverfordwest		April-May YTD		Last Year		Indicator
<b>CRIME</b>	Performance	Indicator	Performance	Indicator	Change & Detection	
Total Crime Recorded (per 1,000 population)	368	18.4	341	17.1	7.9%	
Total Detections (% rate)	149	40.5%	121	35.5%	40.5%	
Burglary Dwelling (per 1,000 households)	9	1.1	14	1.7	-35.7%	
Total Detections (% rate)	1	11.1%	5	35.7%	11.1%	
Total Violent Crime (per 1,000 population)	127	6.4	97	4.9	30.9%	
Total Detections (% rate)	63	49.6%	44	45.4%	49.6%	
Autocrime per (1,000 population)	17	0.9	11	0.6	54.5%	
Total Detections (% rate)	1	5.9%	1	9.1%	5.9%	
Milford Haven		April-May YTD		Last Year		Indicator
<b>CRIME</b>	Performance	Indicator	Performance	Indicator	Change & Detection	
Total Crime Recorded (per 1,000 population)	293	12.0	262	10.7	11.8%	
Total Detections (% rate)	139	47.4%	112	42.7%	47.4%	
Burglary Dwelling (per 1,000 households)	4	0.4	3	0.3	33.3%	
Total Detections (% rate)	0	0.0%	2	66.7%	0.0%	
Total Violent Crime (per 1,000 population)	86	3.5	89	3.6	-3.4%	
Total Detections (% rate)	53	61.6%	48	53.9%	61.6%	
Autocrime per (1,000 population)	11	0.5	12	0.5	-8.3%	
Total Detections (% rate)	2	18.2%	5	41.7%	18.2%	
Pembroke Dock		April-May YTD		Last Year		Indicator
<b>CRIME</b>	Performance	Indicator	Performance	Indicator	Change & Detection	
Total Crime Recorded (per 1,000 population)	306	16.0	438	22.9	-30.1%	
Total Detections (% rate)	111	36.3%	208	47.5%	36.3%	
Burglary Dwelling (per 1,000 households)	7	0.9	10	1.2	-30.0%	
Total Detections (% rate)	1	14.3%	4	40.0%	14.3%	
Total Violent Crime (per 1,000 population)	102	5.3	85	4.4	20.0%	
Total Detections (% rate)	64	62.7%	53	62.4%	62.7%	
Autocrime per (1,000 population)	21	1.1	27	1.4	-22.2%	
Total Detections (% rate)	1	4.8%	2	7.4%	4.8%	
Tenby		April-May YTD		Last Year		Indicator
<b>CRIME</b>	Performance	Indicator	Performance	Indicator	Change & Detection	
Total Crime Recorded (per 1,000 population)	288	11.9	284	11.8	1.4%	
Total Detections (% rate)	87	30.2%	93	32.7%	30.2%	
Burglary Dwelling (per 1,000 households)	3	0.3	4	0.4	-25.0%	
Total Detections (% rate)	0	0.0%	3	75.0%	0.0%	
Total Violent Crime (per 1,000 population)	69	2.9	57	2.4	21.1%	
Total Detections (% rate)	36	52.2%	43	75.4%	52.2%	
Autocrime per (1,000 population)	31	1.3	26	1.1	19.2%	
Total Detections (% rate)	6	19.4%	2	7.7%	19.4%	

# Target Contribution Summary - Powys

DYFED-POWYS POLICE

**GREEN/RED** indicates current performance **consistent** or **not consistent** with force target reduction & detection rate

POWYS		April-May YTD		Last Year		Indicator
<b>CRIME</b>	Performance	Indicator	Performance	Indicator	Change & Detection	
Total Crime Recorded (per 1,000 population)	1399	11.1	1313	10.4	6.5%	
Total Detections (% rate)	564	40.3%	476	36.3%	40.3%	
Burglary Dwelling (per 1,000 households)	35	0.6	37	0.7	-5.4%	
Total Detections (% rate)	7	20.0%	7	18.9%	20.0%	
Total Violent Crime (per 1,000 population)	381	3.0	416	3.3	-8.4%	
Total Detections (% rate)	225	59.1%	210	50.5%	59.1%	
Autocrime per (1,000 population)	99	0.8	78	0.6	26.9%	
Total Detections (% rate)	18	18.2%	9	11.5%	18.2%	
Brecon		April-May YTD		Last Year		Indicator
<b>CRIME</b>	Performance	Indicator	Performance	Indicator	Change & Detection	
Total Crime Recorded (per 1,000 population)	316	12.4	340	13.3	-7.1%	
Total Detections (% rate)	113	35.8%	99	29.1%	35.8%	
Burglary Dwelling (per 1,000 households)	9	0.8	5	0.5	80.0%	
Total Detections (% rate)	2	22.2%	0	0.0%	22.2%	
Total Violent Crime (per 1,000 population)	80	3.1	105	4.1	-23.8%	
Total Detections (% rate)	51	63.8%	48	45.7%	63.8%	
Autocrime per (1,000 population)	20	0.8	25	1.0	-20.0%	
Total Detections (% rate)	4	20.0%	1	4.0%	20.0%	
Llandrindod Wells		April-May YTD		Last Year		Indicator
<b>CRIME</b>	Performance	Indicator	Performance	Indicator	Change & Detection	
Total Crime Recorded (per 1,000 population)	236	8.4	221	7.8	6.8%	
Total Detections (% rate)	87	36.9%	88	39.8%	36.9%	
Burglary Dwelling (per 1,000 households)	5	0.4	9	0.7	-44.4%	
Total Detections (% rate)	0	0.0%	3	33.3%	0.0%	
Total Violent Crime (per 1,000 population)	49	1.7	63	2.2	-22.2%	
Total Detections (% rate)	36	73.5%	38	60.3%	73.5%	
Autocrime per (1,000 population)	16	0.6	12	0.4	33.3%	
Total Detections (% rate)	2	12.5%	2	16.7%	12.5%	
Newtown		April-May YTD		Last Year		Indicator
<b>CRIME</b>	Performance	Indicator	Performance	Indicator	Change & Detection	
Total Crime Recorded (per 1,000 population)	450	12.8	393	11.2	14.5%	
Total Detections (% rate)	219	48.7%	136	34.6%	48.7%	
Burglary Dwelling (per 1,000 households)	6	0.4	16	1.1	-62.5%	
Total Detections (% rate)	3	50.0%	2	12.5%	50.0%	
Total Violent Crime (per 1,000 population)	157	4.5	130	3.7	20.8%	
Total Detections (% rate)	93	59.2%	60	46.2%	59.2%	
Autocrime per (1,000 population)	39	1.1	23	0.7	69.6%	
Total Detections (% rate)	11	28.2%	2	8.7%	28.2%	
Welshpool		April-May YTD		Last Year		Indicator
<b>CRIME</b>	Performance	Indicator	Performance	Indicator	Change & Detection	
Total Crime Recorded (per 1,000 population)	285	11.2	248	9.7	14.9%	
Total Detections (% rate)	115	40.4%	95	38.3%	40.4%	
Burglary Dwelling (per 1,000 households)	9	0.8	6	0.6	50.0%	
Total Detections (% rate)	2	22.2%	2	33.3%	22.2%	
Total Violent Crime (per 1,000 population)	71	2.8	84	3.3	-15.5%	
Total Detections (% rate)	36	50.7%	43	51.2%	50.7%	
Autocrime per (1,000 population)	14	0.5	11	0.4	27.3%	
Total Detections (% rate)	1	7.1%	3	27.3%	7.1%	
Ystradgynlais		April-May YTD		Last Year		Indicator
<b>CRIME</b>	Performance	Indicator	Performance	Indicator	Change & Detection	
Total Crime Recorded (per 1,000 population)	112	9.4	111	9.3	0.9%	
Total Detections (% rate)	30	26.8%	58	52.3%	26.8%	
Burglary Dwelling (per 1,000 households)	6	1.2	1	0.2	500.0%	
Total Detections (% rate)	0	0.0%	0	0.0%	0.0%	
Total Violent Crime (per 1,000 population)	24	2.0	34	2.9	-29.4%	
Total Detections (% rate)	9	37.5%	21	61.8%	37.5%	
Autocrime per (1,000 population)	10	0.8	7	0.6	42.9%	
Total Detections (% rate)	0	0.0%	1	14.3%	0.0%	

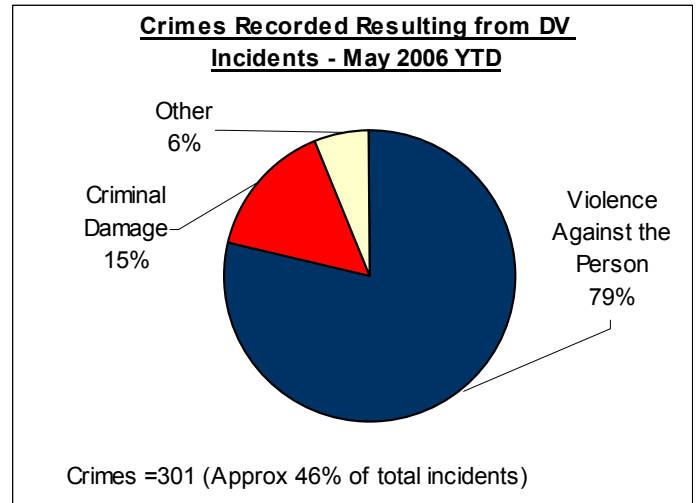
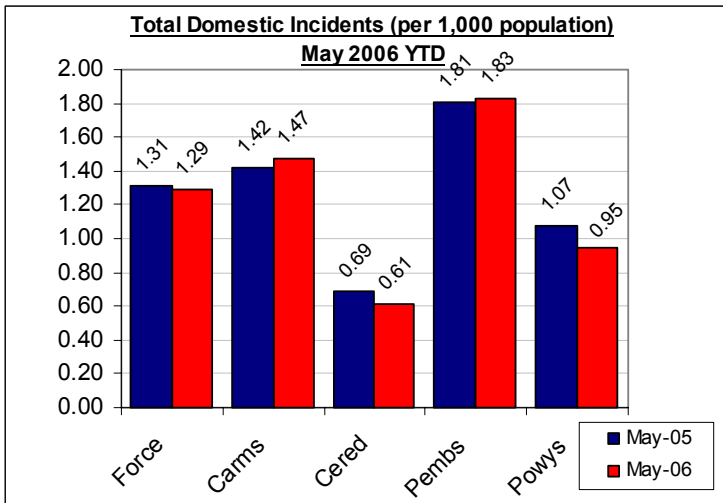
# Domestic Incidents

DYFED POWYS POLICE

**SPI 8A TARGET -38% OF INCIDENTS WITH AN ARREST MADE**

**LOCAL TARGET – 25 % OF TOTAL INCIDENTS INVOLVING REPEAT VICTIMS**

Please note figures provided here are reliant on force systems being updated and remain **provisional only**. For the latest detailed information please contact your local Public Protection Unit (PPU) for further details.



## Section & Divisional Summary – May 2006 YTD

Section	Total Incidents	Total Arrest Rate		Crimes & Sanction Detections			Repeat Victims (12mths data)**	May 2005 (SPLY)	
		Arrests	Total Arrest Rate	Crimes	% Sanction Detection Rate	Arrest Rate for Crimes		Total Incidents	Annual % Change
Ammanford (AA)	39	17	43.6%	16	50.0%	75.0%	17.6%	23	69.6%
Carmarthen (AC)	57	27	47.4%	24	41.7%	70.8%	15.8%	48	18.8%
Llanelli (AL)	122	48	39.3%	58	50.0%	65.5%	23.7%	147	-17.0%
Towy Gwendraeth (AT)	43	17	39.5%	18	38.9%	72.2%	20.3%	35	22.9%
<b>Carmarthenshire</b>	<b>261</b>	<b>109</b>	<b>41.8%</b>	<b>116</b>	<b>46.6%</b>	<b>69.0%</b>	<b>20.7%</b>	<b>253</b>	<b>3.2%</b>
Aberystwyth (BA)	21	15	71.4%	13	46.2%	92.3%	17.6%	32	-34.4%
Aberaeron (BB)	5	4	80.0%	4	75.0%	100.0%	16.7%	4	25.0%
Cardigan (BC)	14	8	57.1%	5	60.0%	80.0%	20.6%	10	40.0%
Lampeter (BL)	8	6	75.0%	5	40.0%	100.0%	15.2%	8	0.0%
<b>Ceredigion</b>	<b>48</b>	<b>33</b>	<b>68.8%</b>	<b>27</b>	<b>51.9%</b>	<b>92.6%</b>	<b>18.0%</b>	<b>54</b>	<b>-11.1%</b>
Fishguard (CF)	28	15	53.6%	17	23.5%	76.5%	30.2%	30	-6.7%
Haverfordwest (CH)	39	17	43.6%	16	37.5%	56.3%	31.5%	43	-9.3%
Milford Haven (CM)	58	26	44.8%	22	63.6%	90.9%	31.9%	54	7.4%
Pembroke Dock (CP)	58	30	51.7%	26	61.5%	80.8%	28.7%	59	-1.7%
Tenby (CT)	32	17	53.1%	16	43.8%	81.3%	18.1%	26	23.1%
<b>Pembrokeshire</b>	<b>215</b>	<b>105</b>	<b>48.8%</b>	<b>97</b>	<b>48.5%</b>	<b>78.4%</b>	<b>28.9%</b>	<b>212</b>	<b>1.4%</b>
Brecon (DB)	25	11	44.0%	11	63.6%	72.7%	15.7%	26	-3.8%
Llandrindod Wells (DL)	24	8	33.3%	12	41.7%	66.7%	28.9%	19	26.3%
Newtown (DN)	47	24	51.1%	25	36.0%	84.0%	21.6%	44	6.8%
Welshpool (DW)	14	6	42.9%	5	60.0%	80.0%	18.9%	27	-48.1%
Ystradgynlais (DY)	14	6	42.9%	8	75.0%	75.0%	13.3%	24	-41.7%
<b>Powys</b>	<b>124</b>	<b>55</b>	<b>44.4%</b>	<b>61</b>	<b>49.2%</b>	<b>77.0%</b>	<b>20.3%</b>	<b>140</b>	<b>-11.4%</b>
<b>Force</b>	<b>648</b>	<b>302</b>	<b>46.6%</b>	<b>301</b>	<b>48.2%</b>	<b>75.7%</b>	<b>23.0%</b>	<b>659</b>	<b>-1.7%</b>

Source: LCS Recorded Domestic Incident Details (all data extracted 02/06/06).

\*\* Repeat Victims performance is based on 12-months total incident data and not fiscal year-to-date and includes **all victims** – not only those involving both the same victim **and** offender.

**The introduction of the Serious Organised Crime and Police Act 2005 (SOCPA) on 01/01/06 has resulted in the withdrawal of the term 'power of arrest'. As a consequence of this it has ceased to be a discrete performance measure.**

# User Satisfaction

## CITIZEN FOCUS PERFORMANCE ASSESSMENT DOMAIN

FEBRUARY 2006 DATA – LATEST

These measures constitute the citizen focus domain in the police performance assessment framework. All victims of crimes (domestic burglary, violent crime and vehicle crime only) or those involved in road traffic collisions are surveyed within a short period of coming into contact with the force to gain their views on the service they received.

For performance assessment purposes, these measurements of user satisfaction are grouped into five main themes, which are:

- SPI 1a – Satisfaction with making contact with the police: 'Ease of Contact'
- SPI 1b – Satisfaction with the action taken by the police: 'Actions'
- SPI 1c – Satisfaction with being kept informed of progress: 'Follow-Up'
- SPI 1d – Satisfaction with their treatment by staff: 'Treatment'
- SPI 1e – Satisfaction with the overall service provided: 'Whole Experience'

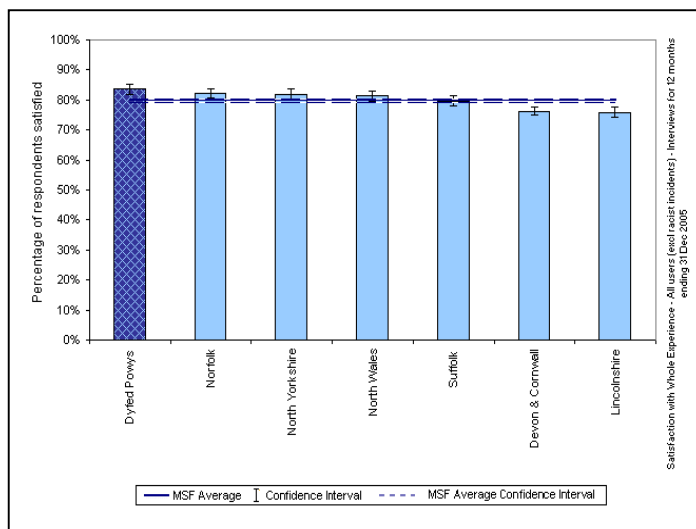
### Force User Satisfaction – Year Ending December 2005

#### Comparative User Satisfaction

Satisfaction with...	DPP Force	MSF Average	Difference
Ease of Contact	91.8%	89.6%	2.2%
Actions	83.0%	77.3%	5.7%
Follow-up	70.3%	63.2%	7.1%
Treatment	91.1%	89.9%	1.2%
Whole experience	83.6%	79.8%	3.8%

Source: Home Office / Iquanta, April 2006

#### MSF – Comparative Force Performance - Whole Experience



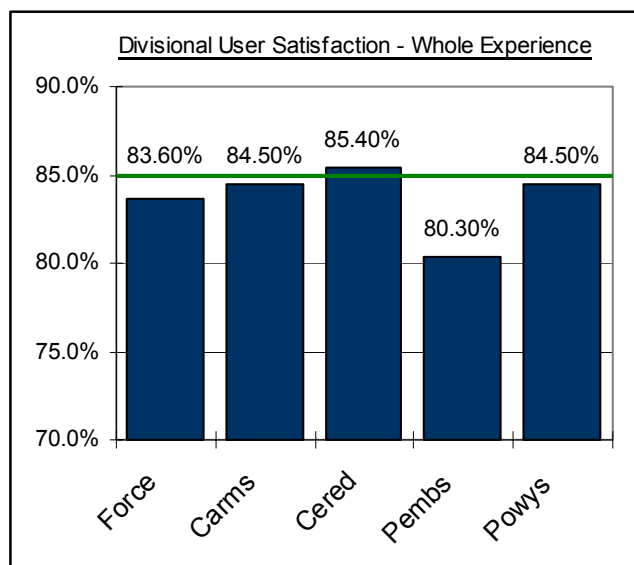
Source: Home Office / Iquanta, April 2006

### Divisional User Satisfaction – Year Ending December 2005 (Jan 05 – Dec 05)

#### BCU user Satisfaction Summary

Year Ending Dec 2005	% Satisfied (Very, Completely and Fairly Satisfied)					Target
	Force	Carms	Cered	Pembs	Powys	
Ease of Contact	91.8%	92.0%	94.8%	89.7%	92.0%	92%
Actions	83.0%	84.3%	83.0%	80.5%	83.7%	84%
Follow-up	70.3%	71.8%	72.6%	67.6%	70.1%	70%
Treatment	91.1%	91.1%	94.0%	89.4%	91.3%	92%
Whole experience	83.6%	84.5%	85.4%	80.3%	84.5%	85%

Source: Home Office / Iquanta, April 2006

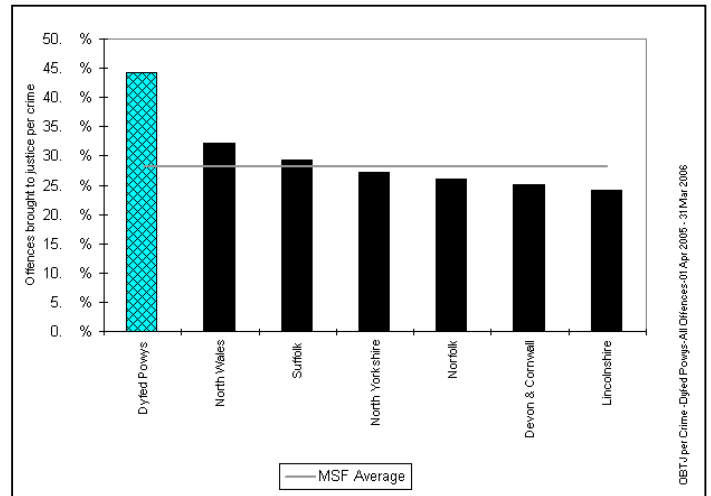
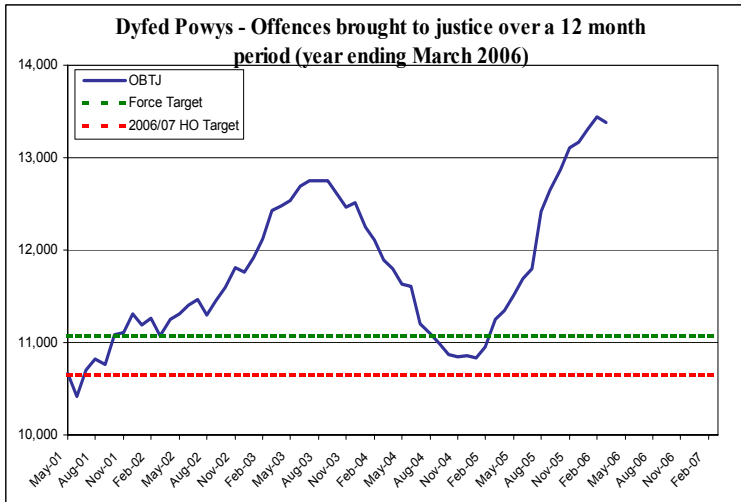


Additional comparative data is available on a quarterly basis. For further information on this or Iquanta contact Corporate Services (ext 6654).

# Narrowing the Justice Gap - OFFENCES BROUGHT TO JUSTICE & SANCTION DETECTIONS

**TARGET 2006/07 : Force Target - 11,068 / Home Office objective - 10,655 total OBTJ (Offences Brought to Justice)**

## Total Offences Brought to Justice (OBTJ) – Force & MSF Comparisons



Offences brought to justice – 12 monthly data	TIC	PND	Formal Warnings	Cautions	Convictions	OBTJ
Baseline: Apr 01 – Mar 02	420	-	-	3,698	6,900	11,068
Latest Annual Data : March 05 – February 06	460	786	1,095	4,658	6,381	13,380
Change	+10%	-	-	+26%	-8%	+21%
<b>2005/06 Force Target (0%- 11,068 OBTJ)</b>	<b>YES</b>	<b>n/a</b>	<b>YES</b>	<b>YES</b>	<b>NO</b>	<b>YES</b>

## Divisional Contribution Toward OBTJ Volumes – Approximate Latest

Please note this data is provided as a **guide only** - it is provided here for information.

Approx OBTJ YTD	Apr 05 – Mar 06	Target**	Diff from Target
Carmarthenshire	4726	3975	18.9%
Ceredigion	1952	1736	12.4%
Pembrokeshire	3421	2941	16.3%
Powys	3281	2416	35.8%
Force	13380	11068	20.9%

Target Pro-Rata Based on 6 months performance

\*\* - This is the target profile required to attain the end of year target of 11,068 OBTJ. (The divisional target breakdown is based on mirroring 2004/05 contribution toward total force sanction detections).

## Sanction Detection Volume Performance YTD – Current Clear-Up Breakdown (Annual % Change)

The current volume of sanction detections (May 06 YTD) is up 32% on the same period last year to stand at 2,234 (up 451 from 1783).

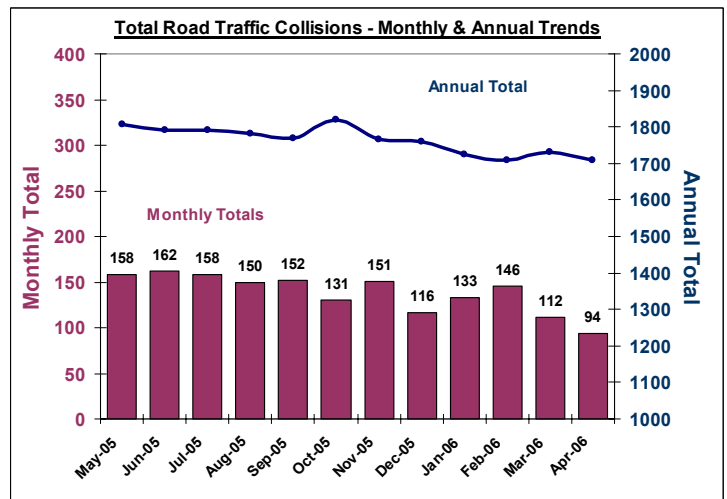
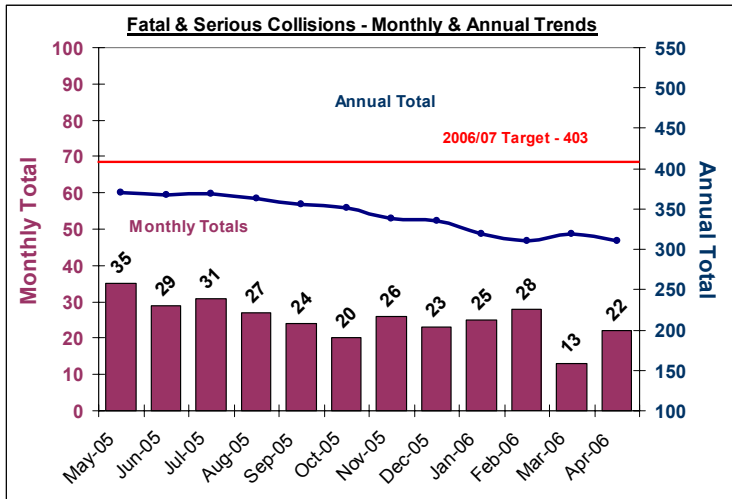
Area – April YTD	Charged	Summons	Cautioned	TIC	PND	F. Warning for Cannabis	Total Sanction Dets
Carmarthenshire	330 (+4%)	16 (5 SPLY)	284 (+49%)	60 (11 SPLY)	63 (+13%)	119 (52 SPLY)	872 (+38%)
Ceredigion	132 (+2%)	3 (8 SPLY)	127 (+32%)	2 (7 SPLY)	21 (6 SPLY)	14 (-42%)	299 (+10%)
Pembrokeshire	175 (+1%)	3 (11 SPLY)	267 (+52%)	11 (86 SPLY)	44 (+33%)	19 (-14%)	518 (+91%)
Powys	227(+19%)	9 (16 SPLY)	188 (+40%)	8 (No Change)	46 (21 SPLY)	67 (8 SPLY)	545 (+45%)
Force	864 (+7%)	31(-23%)	866 (+45%)	81 (-28%)	174 (+50%)	219 (106 SPLY)	2234 (+25%)

# Road Traffic Collisions

April Monthly Data Latest available

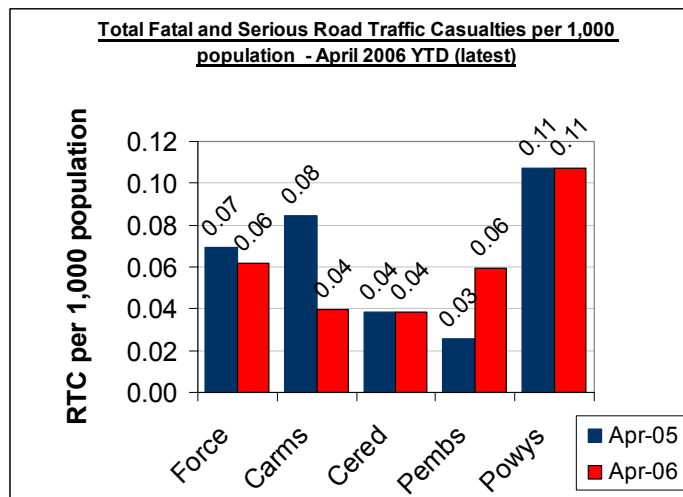
**TARGET 2006/07: 403 FATAL AND SERIOUS COLLISIONS & CASUALTIES (0.8 PER 1,000 POPULATION)**

## Road Traffic Collisions – Monthly & Annual Trends (April 06 - latest data)



Performance YTD (April 2006 YTD - latest)	FORCE	Carms	Cered	Pembs	Powys
Fatal Road Collisions YTD	2	1	0	0	1
Serious & Fatal Road Collisions YTD	22	6	3	4	9
<b>Indicator - Per 1,000 population</b>	<b>0.04</b>	<b>0.03</b>	<b>0.04</b>	<b>0.03</b>	<b>0.07</b>
<b>On-Target (0.8 end of year – 0.07 pro rata)</b>	<b>YES</b>	<b>YES</b>	<b>YES</b>	<b>YES</b>	<b>YES</b>
Fatal (SPLY)	3	2	0	0	1
Serious & Fatal (SPLY)	30	11	3	3	3

## Road Traffic Casualties – 2010 Target Progress



March 2006 YTD (latest)	Force	Carms	Cered	Pembs	Powys
Number of people killed or seriously injured casualties	31	7	3	7	14
At 2010 Target Level*	<b>YES</b>	<b>YES</b>	<b>YES</b>	<b>YES</b>	<b>YES</b>
Number of Children (<=15 yrs) killed or seriously injured	1	1	0	0	0
At 2010 Target Level*	<b>YES</b>	<b>YES</b>	<b>YES</b>	<b>YES</b>	<b>YES</b>
Number of persons with slight injuries	18	5	1	4	8
At 2010 Target Level*	<b>NO</b>	<b>NO</b>	<b>NO</b>	<b>NO</b>	<b>NO</b>

\* 2010 Targets Established with Roads Policing Strategy, Operations Dept & National Road Policing Targets. Progress towards Pro-Rata year-end 2010 target illustrated here

Source: MAAP RTC Database 07/06/06

# Road Policing Performance

## SELECTED MEASURES OF ROADS POLICING ACTIVITY 2006/07

These measures constitute a range of selected measures to illustrate performance with respect to roads policing. The measures are:

- BCU Breakdown of ANPR Performance
- Project Laser – Most Similar Forces Comparisons for ANPR
- S.59 Seizure of Vehicles Used in an Anti-Social Manner

### BCU Breakdown of ANPR Performance (latest)

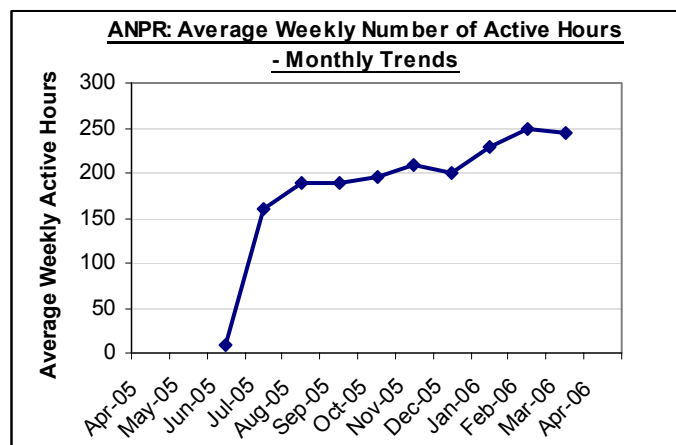
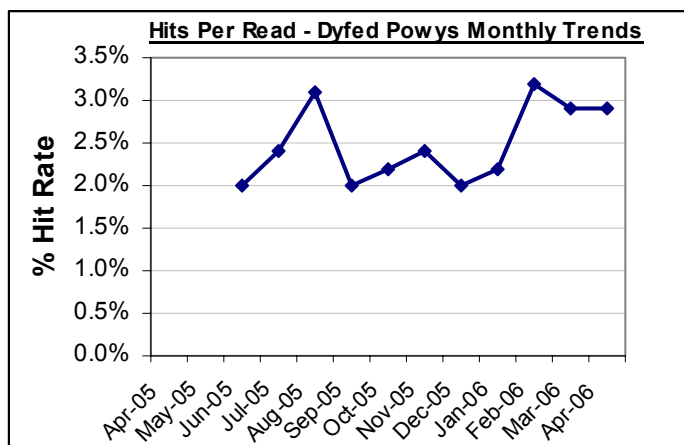
Covering the period: 01/04/2006 – 30/04/2006	Force*	Carms	Cered	Pembs	Powys	Ports
<b>ANPR Reads</b>	95194	9789	19830	19887	33688	12000
<b>ANPR Hits</b>	2759	260	494	568	1437	-
<b>Arrests</b>	42	2	0	3	37	-
<b>Total No. Operational Hours</b>	781.5	151.0	112.7	150.5	367.3	-
<b>% Hits from Reads</b>	2.9%	2.7%	2.5%	2.9%	4.3%	-
<b>Hits per Operational Hour</b>	3.5	1.7	4.4	3.8	3.9	-

During this period Carmarthenshire had one vehicle unavailable, but two others were available; Ceredigion had three vehicles functioning; Pembrokeshire had two mobile units available, and Powys had five vehicles and a targeting team available.

### Project Laser – ANPR Performance Comparisons (latest)

April 2005 – March 2006 YTD	Dyfed Powys	MSF Average
	<b>Active Hours</b>	8,103
<b>Dedicated Officer Hours</b>	8,230	8,070
<b>Hits</b>	12,006	24,797
<b>Reads</b>	483,613	868,182
<b>% Hits from Reads</b>	2.5%	2.8%
<b>No. Hits per Dedicated Officer Hour</b>	1.5	4.2
<b>No. Reads per 1,000 population</b>	960	1147

Source: Project Laser 3 ANPR Report



### S.59 Seizure of Vehicles Used in an Anti-Social Manner

April 2006 – May 2006	Number of Incidents YTD				
	Force	Carms	Cered	Pembs	Powys
<b>Vehicles ...</b>					
<b>Seized (+ SPLY)</b>	0 (1)	0 (0)	0 (0)	0 (0)	0 (1)
<b>Warned (+ SPLY)</b>	5 (9)	0 (0)	0 (5)	5 (2)	0 (2)

Source: STORM Command & Control June 2006

# Local Policing Domain

2006/07: LOCAL POLICING DOMAIN – LOCAL PRIORITIES AND TARGETS

These priorities constitute a range of selected priorities to illustrate performance within the Local Policing Domain for 2006/07. These are:

## Terrorism and Domestic Extremism :

- Objective – To support the wider national endeavour in protecting the country from terrorism and domestic extremism.

## Class A Drugs :

- Objective – To proactively target and disrupt Class A drug supply and distribution networks across and beyond the Force area

## Violent Crime :

- Objective - To reduce levels of violent crime and seek to increase detection rates in this area.

## Anti-Social Behaviour :

- Objective - To proactively tackle anti-social behaviour in conjunction with partners, providing greater reassurance to the public.

Local Policing Domain Performance	FORCE	CARMS	CERED	PEMBS	POWYS
<b>TERRORISM &amp; DOMESTIC EXTREMISM</b>	<i>N/A - national theme - not appropriate to set local measures</i>				
<b>CLASS-A DRUGS</b>					
<b>No. of class A drug offenders charged with trafficking</b>					
<i>Target – To increase the numbers of offenders charged up 10%</i>					
YTD Total	20	6	8	5	1
SPLY	17	7	3	4	3
Diff	3	-1	5	1	-2
<i>% Change</i>	<b>17.6%</b>	<b>-14.3%</b>	<b>166.7%</b>	<b>25.0%</b>	<b>-66.7%</b>
<b>No. of class A drug offences resulting in offences brought to justice</b>					
<i>Target – To increase OBJ by 10%</i>					
YTD Total	Data not available at present. Subject to two month time-lag				
<b>VIOLENT CRIME</b>					
<b>No. Incidents involving victims of domestic violence who have been a victim in more than one incident in the previous 12 months (same offender involved)</b>					
<i>Target – To reduce the number of repeat incidents by 7%</i>					
12 months total (May 05 - Apr 06)	826	2/80	64	338	144
Baseline Data: Apr 05 – Mar 06	856	283	65	345	163
Diff	-30	-3	-1	-7	-19
<i>% Change</i>	<b>-3.5%</b>	<b>-1.1%</b>	<b>-1.5%</b>	<b>-2.0%</b>	<b>-11.7%</b>
<b>Proportion of Violent Offences resulting in sanction detection</b>					
<i>Target – To attain a detection rate of 58% (sanction detections)</i>					
YTD Total (Sanction Detections)	<b>50.8%</b>	<b>48.9%</b>	<b>52.1%</b>	<b>53.2%</b>	<b>50.0%</b>
<b>ANTI-SOCIAL BEHAVIOUR</b>					
<b>Number of Anti-Social Behaviour incidents reported to police</b>					
<i>Target – To reduce the number of recorded incidents by 5%</i>					
YTD Total	4437	1596	481	1294	1046
SPLY	4293	1637	543	1166	907
Diff	144	-41	-62	128	139
<i>% Change</i>	<b>3.4%</b>	<b>-2.5%</b>	<b>-11.4%</b>	<b>11.0%</b>	<b>15.3%</b>
<b>No. of total criminal damage offences</b>					
<i>Target – To reduce the numbers of recorded Criminal Damage offences by 3%</i>					
YTD Total	1409	500	180	390	339
SPLY	1410	483	152	466	309
Diff	78	49	18	10	1
<i>% Change</i>	<b>-0.1%</b>	<b>3.5%</b>	<b>18.4%</b>	<b>-16.3%</b>	<b>9.7%</b>

# PPAF Statutory Performance Indicator Summary

Reported Quarterly

## HOME OFFICE POLICE PERFORMANCE ASSESSMENT FRAMEWORK MEASURES

This Data is Updated Quarterly – Latest: May 2005 – March 2006 (except where stated).

Activity	SPI Number	Indicator Description	2004/05 Performance	2005/06 Performance	Change	2005/06 End of Year Target
User Satisfaction Measures	1a	Satisfaction of victims of domestic burglary, violent crime, vehicle crime and road traffic collisions with respect to - a) making contact with the Police	92%	91%	-0.7%	92%
	1b	b) action taken by the Police	84%	83%	-0.2%	84%
	1c	c) Being kept informed of progress	70%	71%	1.2%	70%
	1d	d) Their treatment by staff	92%	91%	-0.5%	92%
	1e	e) the overall service provided	85%	84%	-0.9%	85%
Confidence	2a^	Using the BCS, the % of people who think their local police do a good job	NEW	56%	-	NEW
Fairness and Equality Measures	3a	Satisfaction of victims of racist incidents with respect to the overall service provided	79.2%	90.9%	11.7%	85%
	3b	From SPI 1(e), comparison of satisfaction for white users and users from visible minority ethnic groups with respect to the overall service provided.	White - 84.5% Ethnic - 71.7%	White - 84.0% Ethnic - 86.0%	White -0.5% Ethnic +14.3%	White - 85% Ethnic - 72%
	3c(i)	(i) % of PACE stop/searches which lead to arrest by ethnicity	White - 17.0% Ethnic - 27.2%	White - 14.1% Ethnic - 16.0%	White -2.9% Ethnic -11.2%	White - 20% Ethnic - 20%
	3d	Comparison of percentage detected of violence against the person offences by ethnicity of the victim (sanction detections)	White - 31.2% Ethnic - 31.5%	White - 58.7% Ethnic - 49.8%	White +27.5% Ethnic +18.3%	White - 31% Ethnic - 31%
	3e	Proportion of police recruits (ethnic) compared to the proportion of people from minority ethnic groups in the economically active population (EAP).	0.0%	1.3% of recruits 1.0% of EAP	-	NEW
	3f	Ratio of officers from minority ethnic groups resigning to all officer resignations	NEW	0.0%	NEW	NEW
	3g	% of female police officers compared to overall Force strength.	19.7%	21.1%	1.4%	19%
Measures of Crime Levels	4a^^	Using the British Crime Survey (a) the risk of personal crime; and	8%	8%	0.0%	8%
	4b^^	(b) the risk of household crime.	11%	11%	0.0%	11%
	5a	(a) Domestic Burglaries per 1,000 households.	5.06 (1042 crimes)	3.89 (801 crimes)	-1.17 (-241 crimes)	5.06 (1042 crimes)
	5b	(b) Violent crime per 1,000 population.	18.14 (8859 crimes)	16.26 (8191 crimes)	-1.88 (-494 crimes)	17.60 (8593 crimes)
	5c	(c) Robberies per 1,000 population.	0.08 (41 crimes)	0.08 (40 crimes)	-0.001 (-1 crime)	0.1 (48 crimes)
	5d	(d) Vehicle crime per 1,000 population.	4.77 (2331 crimes)	3.71 (1869 crimes)	-1.06 (-462 crimes)	4.77 (2331 crimes)
	5e^	(e) Life threatening crime and gun crime per 1,000 population.	0.28 (139 crimes)	0.38 (191 crimes)	+0.04 (+20 crimes)	0.28
	5f	(f) Acquisitive Crime per 1,000 population	NEW	6.52 (3280 crimes)	-	NEW
Offences Brought to Justice Measures (OBTJ)	6a	Number of notifiable/recorded offences resulting in convictions, caution or taken into consideration at court	10,730	13,391	+2661 OBTJ (+24.8%)	11,068
	6b	% of notifiable/recorded offences resulting in convictions, caution or taken into consideration at court	33.2%	43.8%	10.6%	NEW
Detection Measure	7a	% of notifiable/recorded offences resulting in charge, summons, caution or taken into consideration at court ('sanction detections')	32.5%	39.6%	7.1%	31%
Domestic Violence Measures	8a	Percentage of domestic violence incidents with a power of arrest where an arrest was made relating to the incident.	81.5%	83.7%	2.2%	80%
Traffic Measures	9a(i)	(i) Number of people killed in under 30 days or seriously injured in road traffic collisions	500 fatal or serious casualties	381 fatal or serious casualties	-119 casualties	391 fatal or serious casualties
	9a(ii)	(ii) Number of persons killed or seriously injured in road traffic collisions per 100million vehicle kilometres travelled.	10.12	7.71	-2.41	8.13
Quality of life Measures	10a^	Using the British Crime Survey a) fear of crime	9.0%	4.8%	-4.2%	10%
	10b^	Perceptions of anti-social behaviour; and	NEW	7.7%	-	NEW
	10c^	Perceptions of local drug use / drug dealing	NEW	22.5%	-	NEW
Resource Use Measures	11a	Percentage of police officer time spent on frontline duties	66.1%	TBC	-	68.5%
	12a	Delivery of cashable and non-cashable efficiency targets	NEW	NEW	-	NEW
	13a	Average number of working hours lost due to sickness per police officer.	92.8 hours	78.6 hours	-14.2 hours -15.3%	92.8 hours
	13b	Average number of working hours lost due to sickness by police staff.	80.7 hours	61.8 hours	-18.9 hours -23.4%	80.7 hours

^ - Year ending December 2005 Data: Latest Available

^^ - Data released July 2005: Latest Available