



Heddlu Dyfed-Powys Police

CRIME TRENDS UPDATE July 2006

Contents:

Headline Statistics	2
Most Frequent Recorded Offences Profile	3
Recorded Crimes and Detection Rates	4
Domestic Burglaries and Detection Rates	5
Other Burglary and Detection Rates	6
Violent Crime and Detection Rates	7
Vehicle Crime and Detection Rates	8
Criminal Damage and Detection Rates	9
Drugs Statistics and Detection Rates	10
Section Level Sanction Detection Summary	11
Domestic Incidents	13
User Satisfaction	14
Narrowing the Justice Gap	15
Road Traffic Collisions	16
Roads Policing Performance	17
Local Policing Domain	18
PPAF Statutory Performance Indicator Summary	20

Heddlu Dyfed Powys Police: Corporate Services



Recorded Crime:

- Total Recorded Crime is down by 3% (-290 crimes) compared to the same period last year (SPLY) to stand at 10,955 crimes. The monthly figure for July 2006 stands at 2,763, a decrease of 2% (-47 offences) on the same month in 2005, but a 7% (+188 offences) increase on the preceding month June 2006.
- Recorded detection performance has a total detection rate for the force at 43% (4,735 total detections) compared with 41% the previous year. The volume of total detections has increased by 2% (+111 detections). The sanction detection rate stands at 41% - this is consistent with the target rate of 31% (and compared with 35% recorded last year). The volume of sanction detections has increased by 579 or 15%.

Domestic Burglary:

- Total Domestic Burglary offences are down by 12% (-36 crimes) compared to the same period last year (SPLY) to stand at 257 crimes. The monthly figure for July 2006 stands at 70, a decrease of 18% (-15 offences) on the same month in 2005, and a 13% (+8 offences) increase on the preceding month June 2006.
- Recorded detection performance remains consistent with last year, with the total detection rate for the force at 25% (65 detections) compared with 24% the previous year. The volume of total detections has decreased by 7% (-5 detections). The sanction detection rate stands at 27% (up from 23% last year) with the volume of sanction detections decreasing by 2% (-1).

Violent Crimes:

- Total Violent crime offences are up by 5% (+153 crimes) compared to the same period last year (SPLY) to stand at 3,230 crimes. The monthly figure for July 2006 stands at 864, an increase of 7% (+56 offences) on the same month in 2005, and a 10% (+78 offences) increase on the preceding month June 2006.
- Recorded detection performance stands at a total detection rate for the force of 60% (1,951 detections) up from 59% last year. The volume of total detections has increased by 7% (+131) over this period. Furthermore the sanction detection rate stands at 57% (compared with 46% last year) with the volume recorded up by 31% (+432 sanction detections).

Vehicle Crime:

- Total Vehicle crime is up by 0.4% (+3 crimes) compared to the same period last year (SPLY) to stand at 687 crimes. The monthly figure for July 2006 stands at 160, a fall of 9% (-16 offences) on the same month in 2005, and a 3% decrease (-5 offences) on the preceding month June 2006.
- Recorded total detection stands at 20% (139 detections) up from 15% the previous year. The volume of total detections has increased by 36% (+37) over this period. The sanction detection rate stands at 20% (compared with 13% last year) with the volume up on the previous year (+49 sanction detections or 55%).

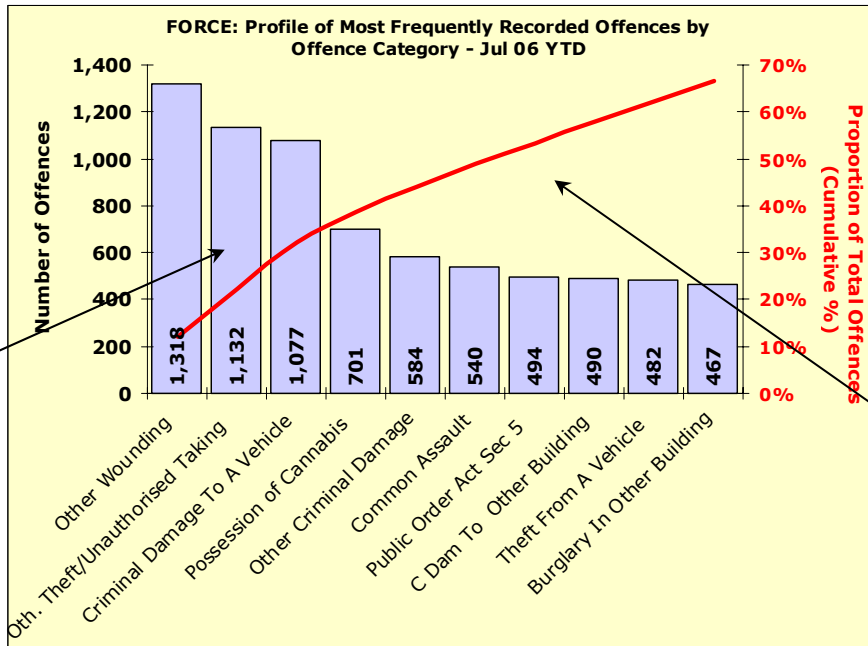
Criminal Damage:

- Total Criminal Damage has decreased by 6% (-184 crimes) compared to the same period last year (SPLY) to stand at 2,698 (excl Arson & Threat to Commit CD). The monthly figure for July 2006 stands at 640, a fall of 10% (-67 offences) on the same month in 2005, and an increase of 7% (+44) on the previous month June 2006.
- Recorded detection performance stands at a total detection rate for the force of 25% (671 detections) consistent with 25% last year. The volume of total detections has decreased by 9% (-62) over this period. The sanction detection rate stands at 23% (compared with 20% last year) with the volume up 6% over this period (+34 sanction detections).

Most Frequent Recorded Offences Profile

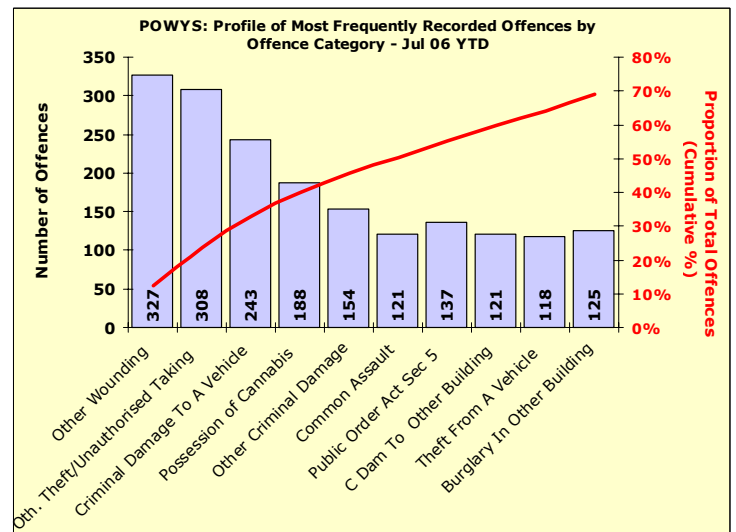
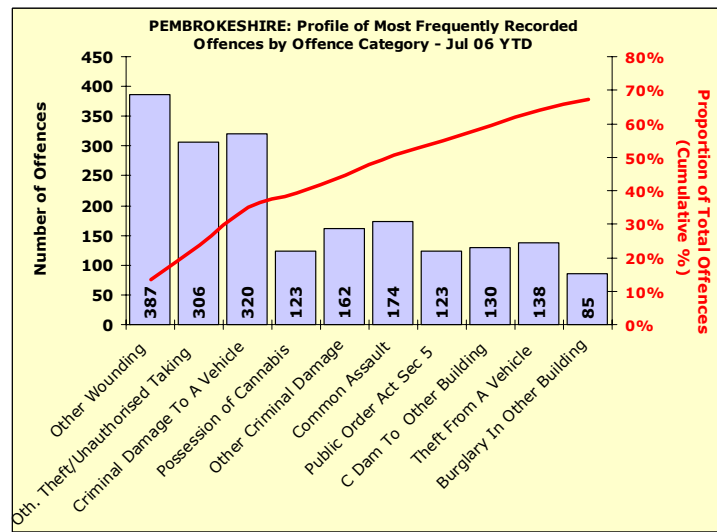
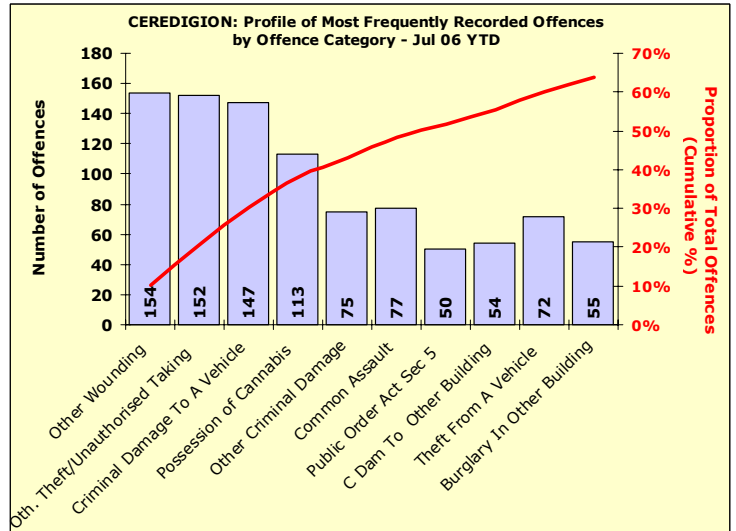
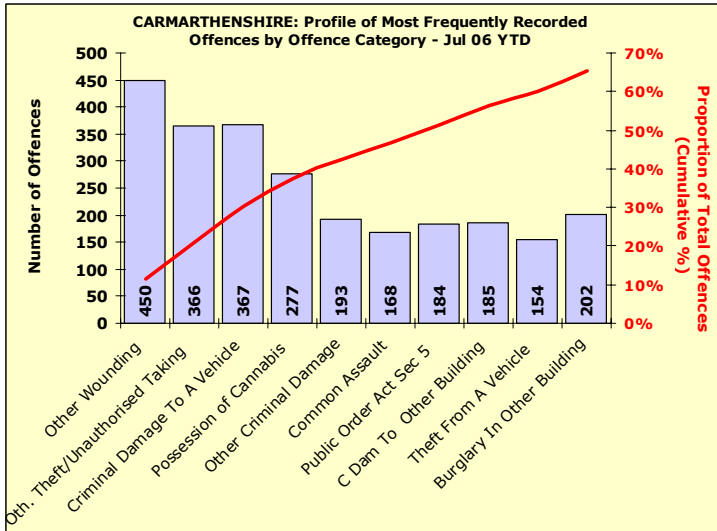
DYFED-POWYS POLICE

July 2006 YTD (Note : Divisional profiles are in the same sequence as forces' most frequent categories – for comparison)



Recorded offences in each category in order of volume.
(Note these can include a number of sub-categories)

The cumulative contribution of these offence categories toward the total volume of offences recorded.

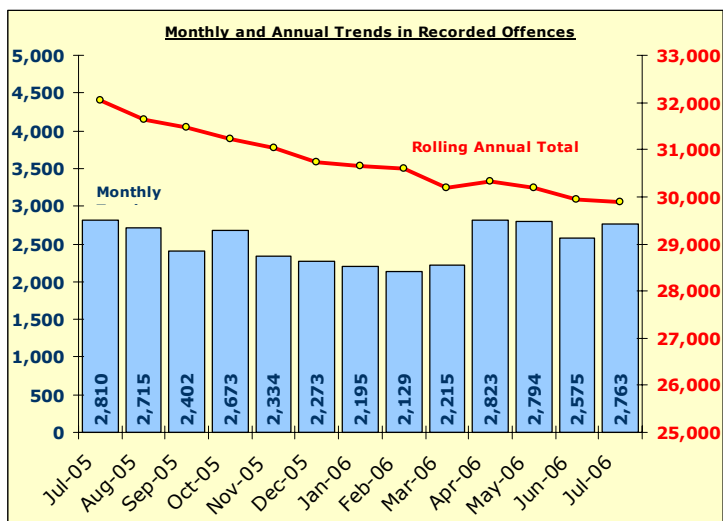


Total Recorded Crime

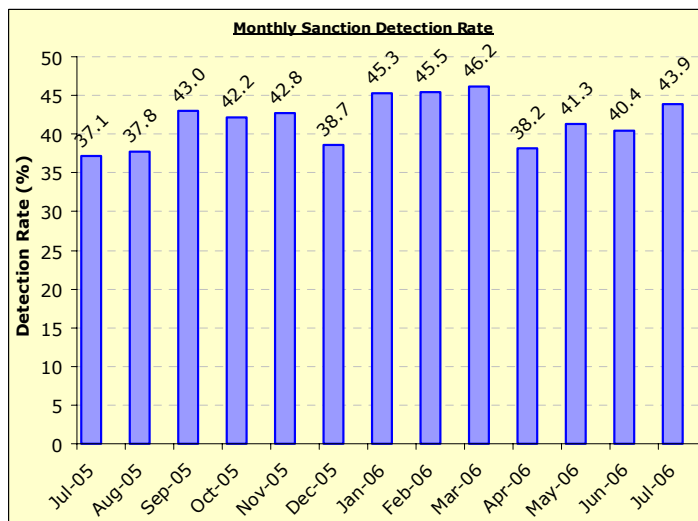
DYFED-POWYS POLICE

TARGET 2006/07 : NO REDUCTION TARGET – 40% SANCTION DETECTION RATE (Local Criminal Justice Board Target 32.8%)

Recorded Crime Levels – July 2006

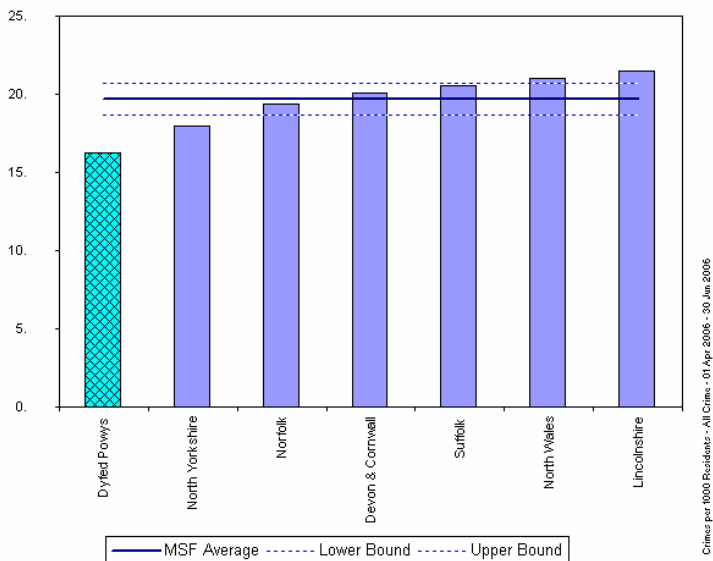


Monthly Sanction Detection Rates – July 2006



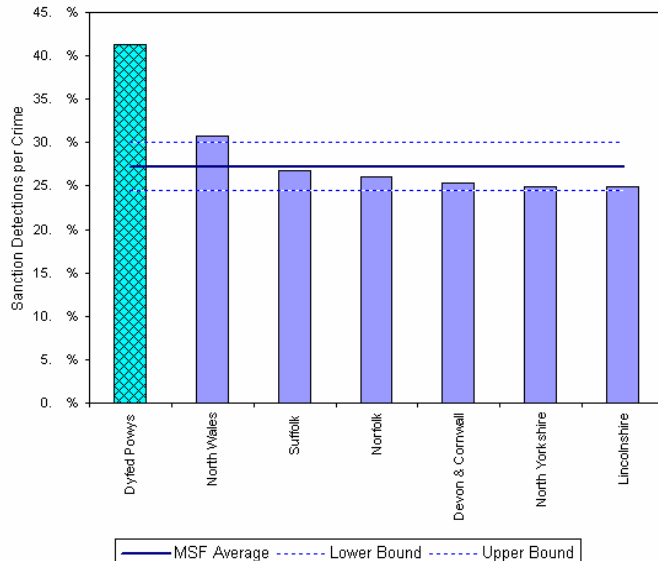
TOTAL ALL OFFENCES	YTD: Jul-06			Detection Rates YTD		Annual Trends SPL Y		
	Recorded Offences	Sanction Detections	Total Detections	Sanction Detection Rate	Total Detection Rate	Recorded Offences	Diff in Number	% Change in Offences
THE FORCE	10,955	4,486	4,735	40.9%	43.2%	11,245	- 290	- 2.6%
Carmarthenshire	3,895	1,706	1,787	43.8%	45.9%	4,087	- 192	- 4.7%
Ceredigion	1,485	658	697	44.3%	46.9%	1,598	- 113	- 7.1%
Pembrokeshire	2,901	1,073	1,150	37.0%	39.6%	2,855	+ 46	+ 1.6%
Powys	2,674	1,049	1,101	39.2%	41.2%	2,705	- 31	- 1.1%

MSF – Crimes per 1000 Residents 01 April – 30 June 2006 (latest quarter)



Crimes per 1000 Residents - All Crimes - 01 Apr 2006 - 30 Jun 2006

MSF – Sanction detections (annual): 01 July 2005 – 30 June 2006 (latest)



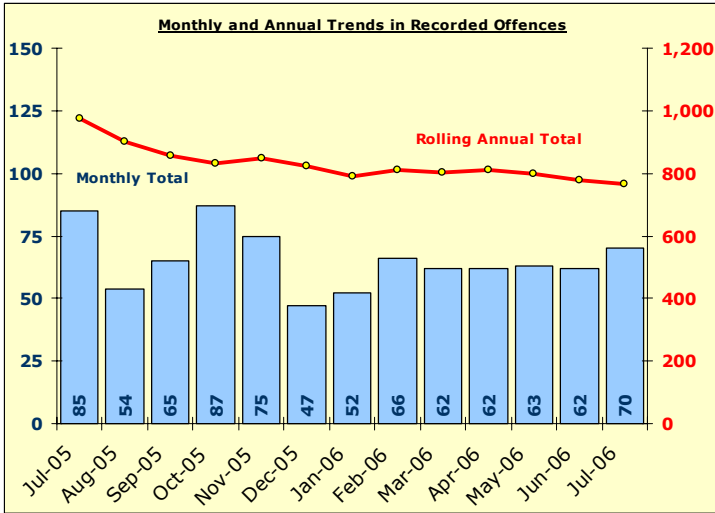
Bar chart MSF - Sanction Detections per Crime-Dyfed Powys-All Crimes-01 Jul 2005 - 30 Jun 2006

Domestic Burglary

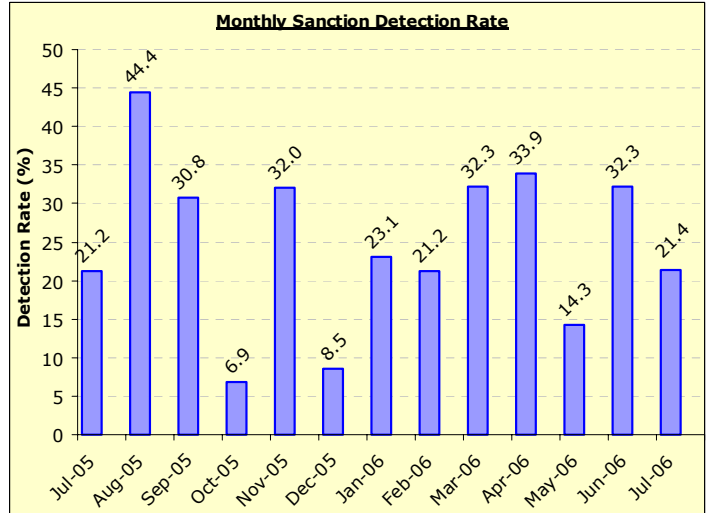
DYFED-POWYS POLICE

TARGET 2006/07 : 2% reduction in offences & 23% total detection rate

Recorded Crime Levels – July 2006

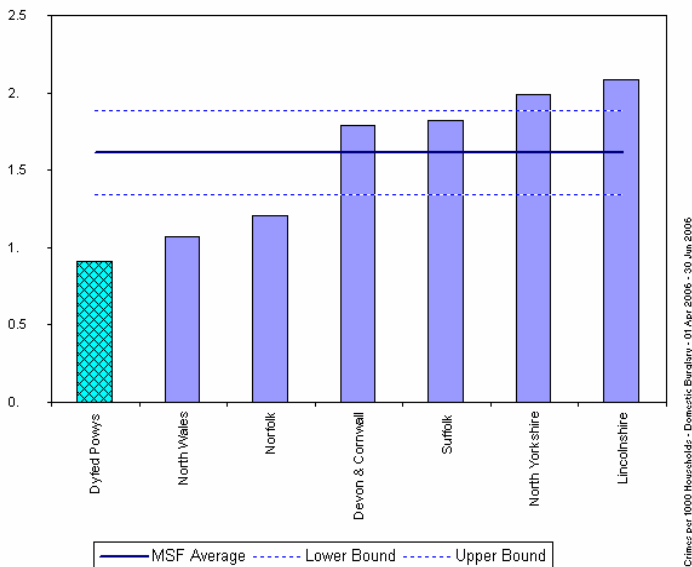


Monthly Sanction Detection Rates – July 2006

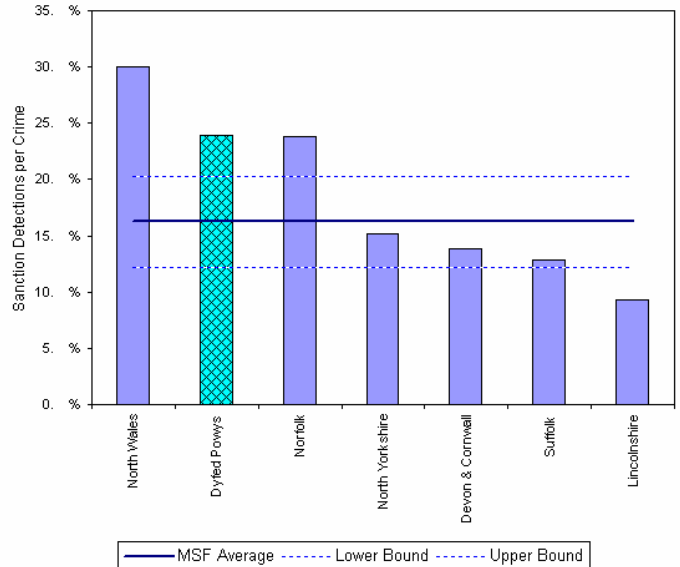


Total Domestic Burglary	YTD: Jul-06			Detection Rates YTD		Annual Trends SPLY		
	Recorded Offences	Sanction Detections	Total Detections	Sanction Detection Rate	Total Detection Rate	Recorded Offences	Diff in Number	% Change in Offences
THE FORCE	257	65	65	25.3%	25.3%	293	- 36	- 12.3%
Carmarthenshire	99	33	33	33.3%	33.3%	118	- 19	- 16.1%
Ceredigion	33	9	9	27.3%	27.3%	30	+ 3	+ 10.0%
Pembrokeshire	62	12	12	19.4%	19.4%	74	- 12	- 16.2%
Powys	63	11	11	17.5%	17.5%	71	- 8	- 11.3%

MSF – Crimes per 1000 Residents 01 April 2006 – 30 June 2006 (latest quarter)



MSF – Sanction detections (annual): 01 July 2005 – 30 June 2006 (latest)

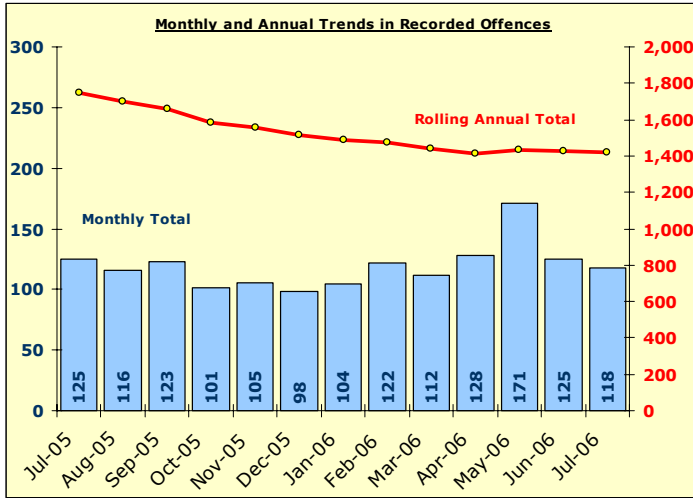


Other Burglary

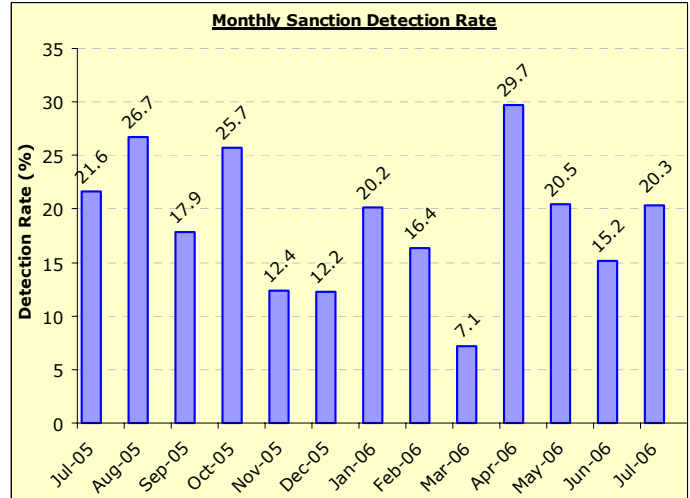
DYFED-POWYS POLICE

TARGET 2006/07 : No Target

Recorded Crime Levels – July 2006

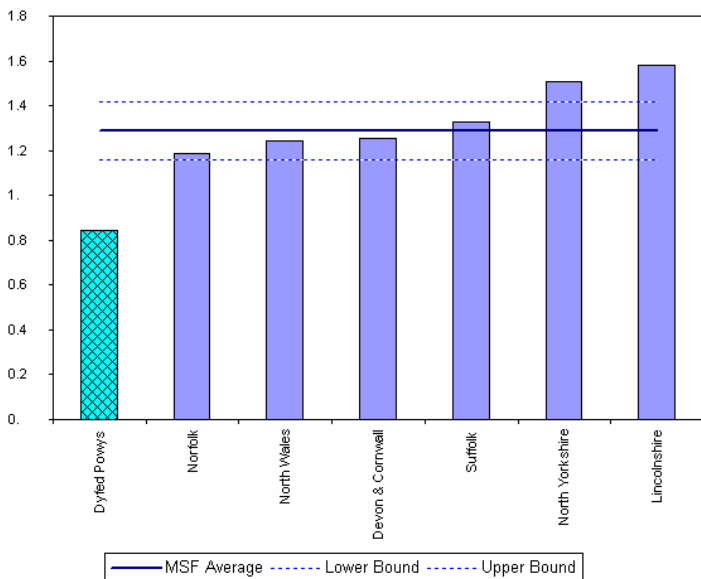


Monthly Sanction Detection Rates – July 2006

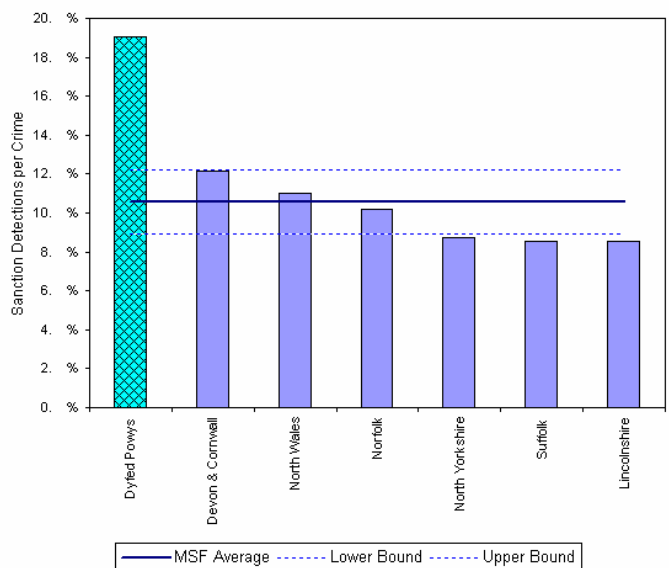


Total Other Burglary	YTD: Jul-06			Detection Rates YTD		Annual Trends SPLY		
	Recorded Offences	Sanction Detections	Total Detections	Sanction Detection Rate	Total Detection Rate	Recorded Offences	Diff in Number	% Change in Offences
THE FORCE	542	116	121	21.4%	22.3%	558	- 16	- 2.9%
Carmarthenshire	240	51	53	21.3%	22.1%	257	- 17	- 6.6%
Ceredigion	64	19	20	29.7%	31.3%	48	+ 16	+ 33.3%
Pembrokeshire	97	31	32	32.0%	33.0%	108	- 11	- 10.2%
Powys	141	15	16	10.6%	11.3%	145	- 4	- 2.8%

MSF – Crimes per 1000 Residents 01 April 2006 – 30 June 2006 (latest quarter)



MSF – Sanction detections (annual): 01 July 2005 – 30 June 2006 (latest)

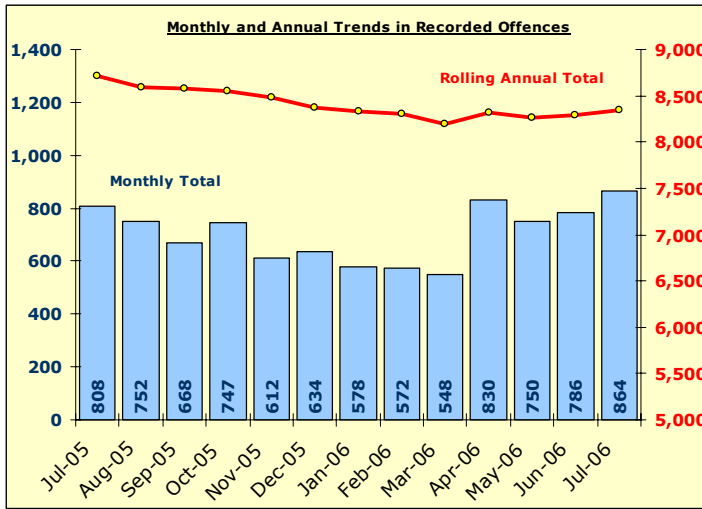


Total Violent Crime

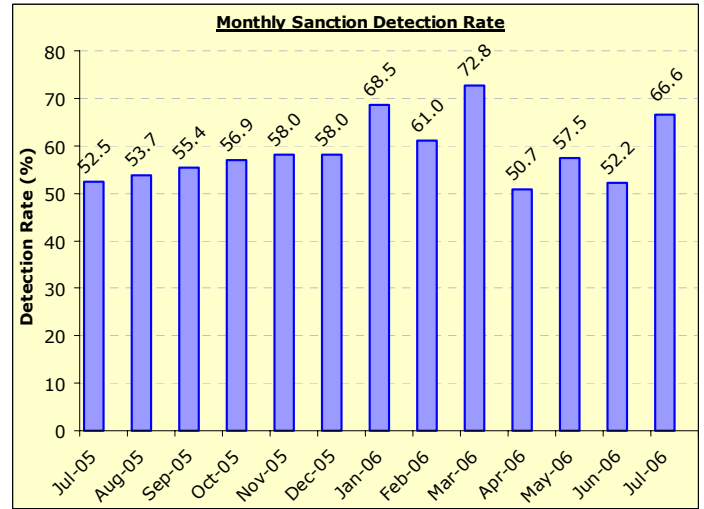
DYFED-POWYS POLICE

TARGET 2006/07 – 3% reduction in offences & 58% sanction detection rate

Recorded Crime Levels – July 2006

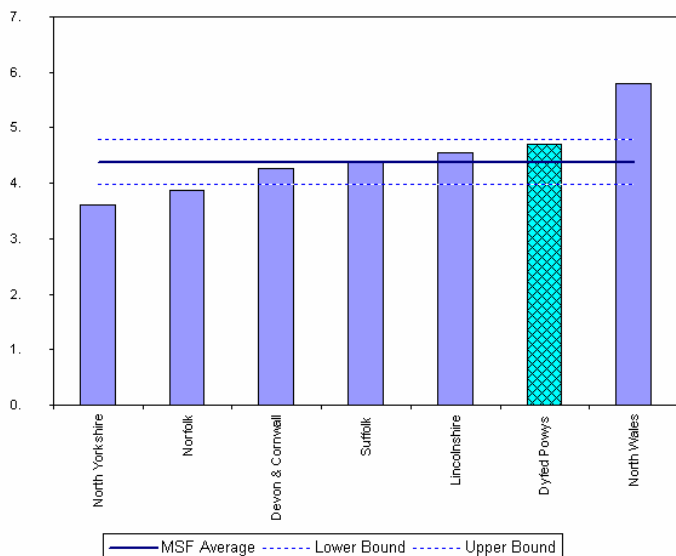


Monthly Sanction Detection Rates – July 2006

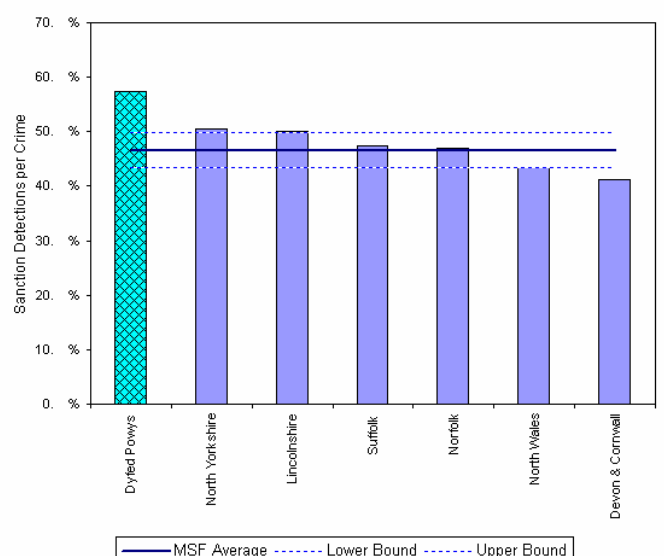


Total Violent Crime	YTD: Jul-06			Detection Rates YTD		Annual Trends SPLY		
	Recorded Offences	Sanction Detections	Total Detections	Sanction Detection Rate	Total Detection Rate	Recorded Offences	Diff in Number	% Change in Offences
THE FORCE	3,230	1,837	1,951	56.9%	60.4%	3,077	+ 153	+ 5.0%
Carmarthenshire	1,139	683	710	60.0%	62.3%	1,061	+ 78	+ 7.4%
Ceredigion	397	211	231	53.1%	58.2%	423	- 26	- 6.1%
Pembrokeshire	908	489	530	53.9%	58.4%	719	+ 189	+ 26.3%
Powys	786	454	480	57.8%	61.1%	874	- 88	- 10.1%

MSF – Crimes per 1000 Residents 01 April 2006 – 30 June 2006 (latest quarter)



MSF – Sanction detections (annual): 01 July 2005 – 30 June 2006 (latest)

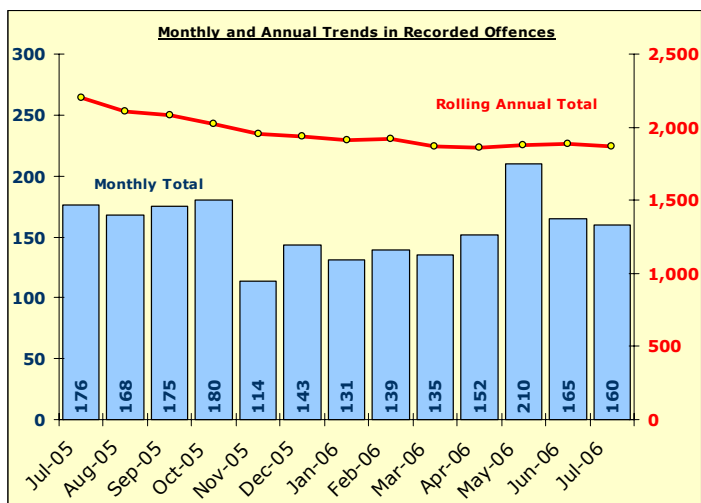


Total Vehicle Crime

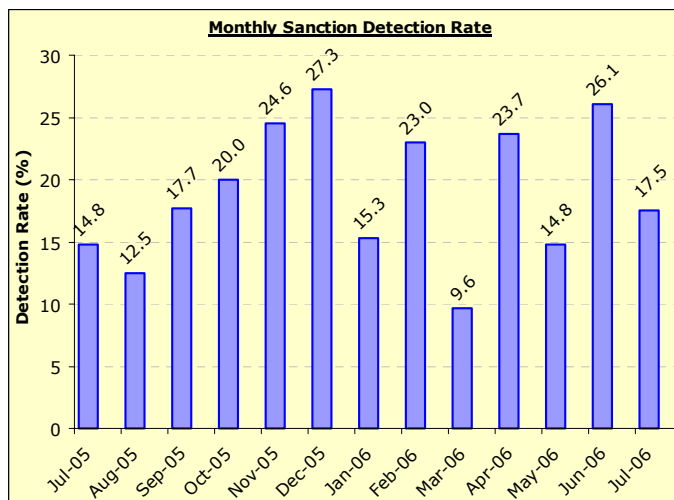
DYFED-POWYS POLICE

TARGET 2006/07 : 2% reduction in offences & 16% sanction detection rate

Recorded Crime Levels – July 2006

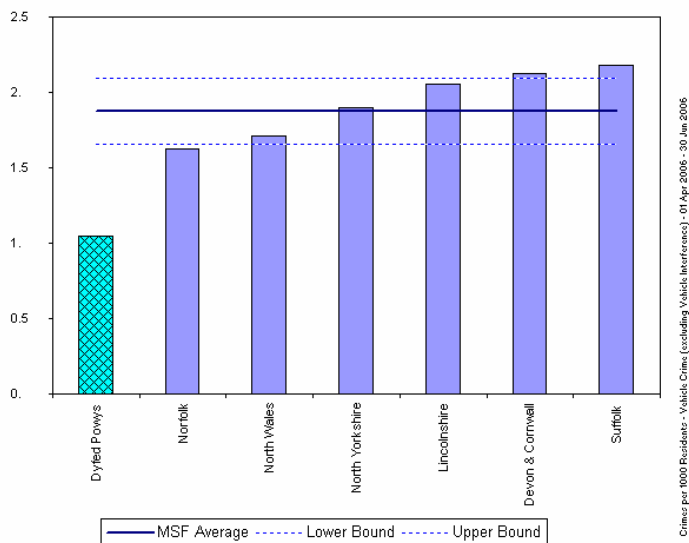


Monthly Sanction Detection Rates – July 2006

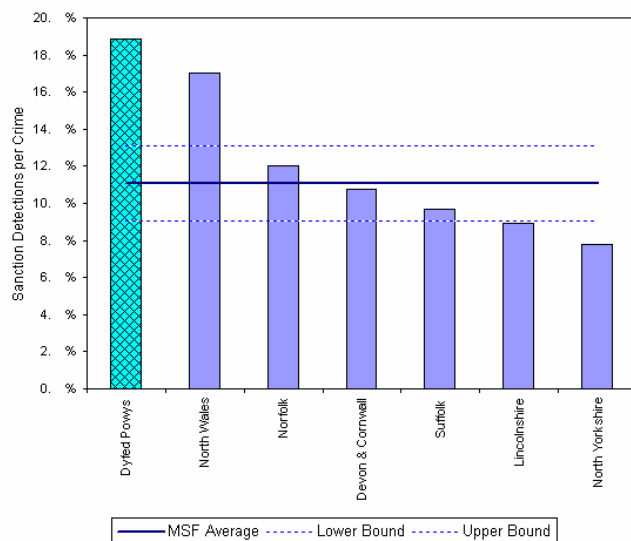


Total Autocrime	YTD: Jul-06			Detection Rates YTD		Annual Trends SPLY		
	Recorded Offences	Sanction Detections	Total Detections	Sanction Detection Rate	Total Detection Rate	Recorded Offences	Diff in Number	% Change in Offences
THE FORCE	687	138	139	20.1%	20.2%	684	+ 3	+ 0.4%
Carmarthenshire	238	46	46	19.3%	19.3%	294	- 56	- 19.0%
Ceredigion	101	41	42	40.6%	41.6%	74	+ 27	+ 36.5%
Pembrokeshire	180	19	19	10.6%	10.6%	167	+ 13	+ 7.8%
Powys	168	32	32	19.0%	19.0%	149	+ 19	+ 12.8%

MSF – Crimes per 1000 Residents 01 April 2006 – 30 June 2006 (latest quarter)



MSF – Sanction detections (annual): 01 July 2005 – 30 June 2006 (latest)

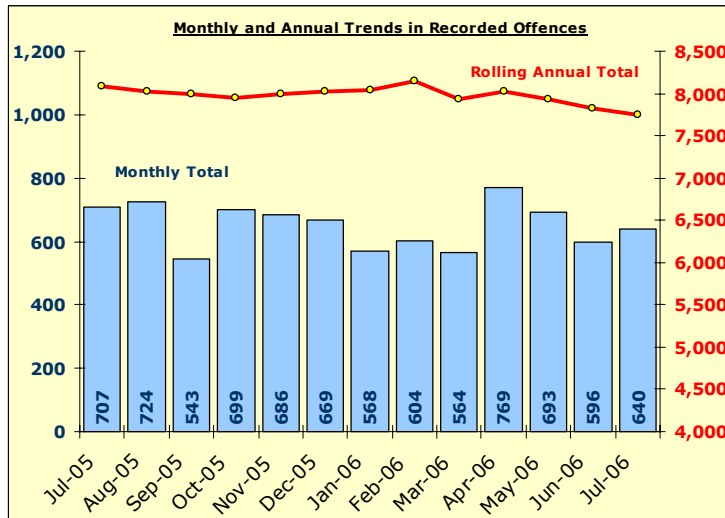


Total Criminal Damage

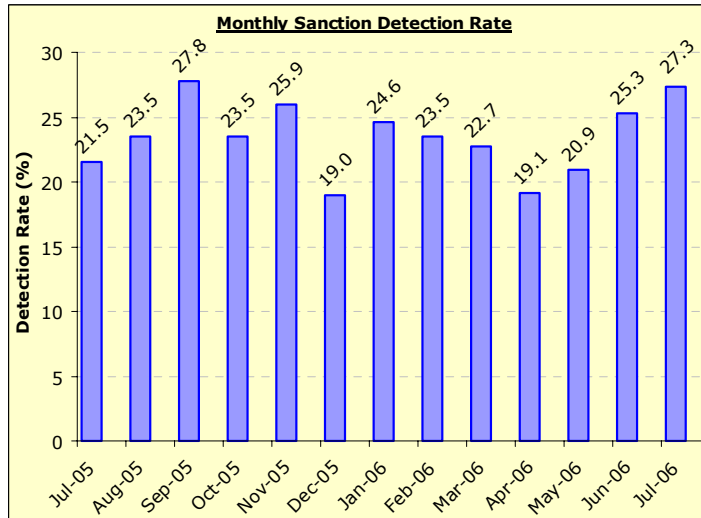
NOW **INCLUDES** ARSON & THREAT TO COMMIT CRIMINAL DAMAGE

TARGET 2005/06 : 3% reduction in offences

Recorded Crime Levels – July 2006

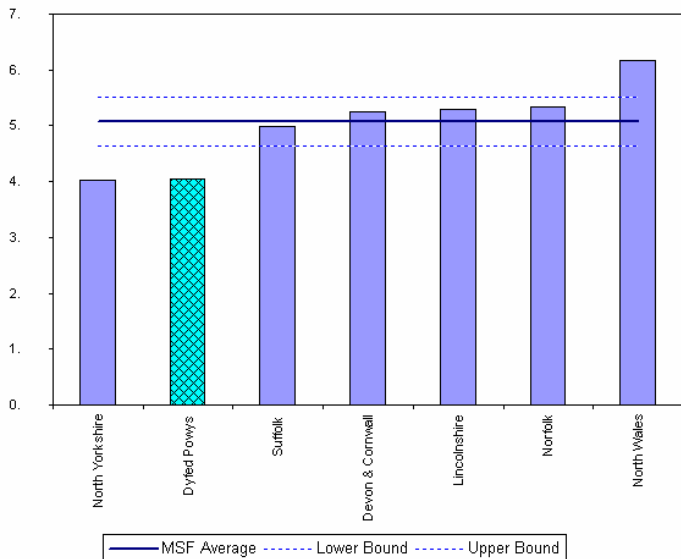


Monthly Sanction Detection Rates – July 2006

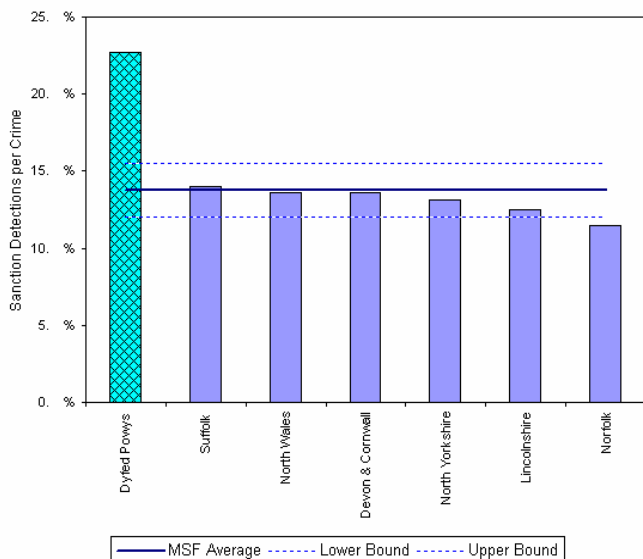


Total Criminal Damage	YTD: Jul-06			Detection Rates YTD		Annual Trends SPLY		
	Recorded Offences	Sanction Detections	Total Detections	Sanction Detection Rate	Total Detection Rate	Recorded Offences	Diff in Number	% Change in Offences
THE FORCE	2,698	618	671	22.9%	24.9%	2,882	- 184	- 6.4%
Carmarthenshire	943	220	244	23.3%	25.9%	1,000	- 57	- 5.7%
Ceredigion	340	94	99	27.6%	29.1%	402	- 62	- 15.4%
Pembrokeshire	780	162	177	20.8%	22.7%	857	- 77	- 9.0%
Powys	635	142	151	22.4%	23.8%	623	+ 12	+ 1.9%

MSF – Crimes per 1000 Residents 01 April 2006 – 30 June 2006 (latest quarter)



MSF – Sanction detections (annual): 01 July 2005 – 30 June 2006 (latest)

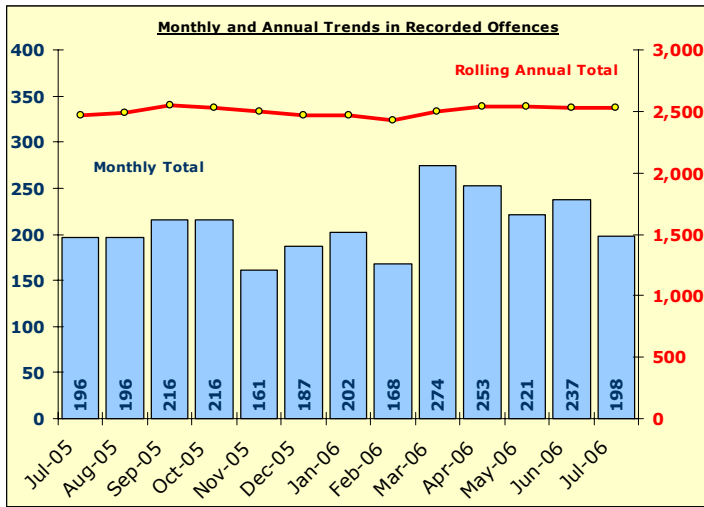


Total Drug Offences

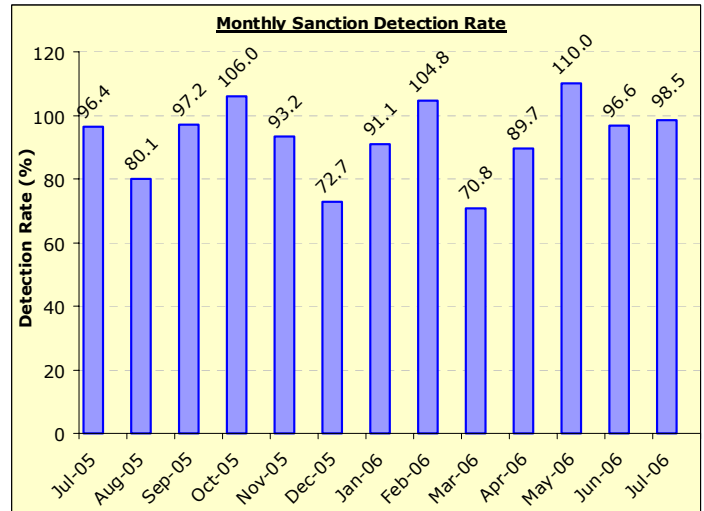
DYFED-POWYS POLICE

TARGET 2005/06 : NO TARGET

Recorded Crime Levels – July 2006

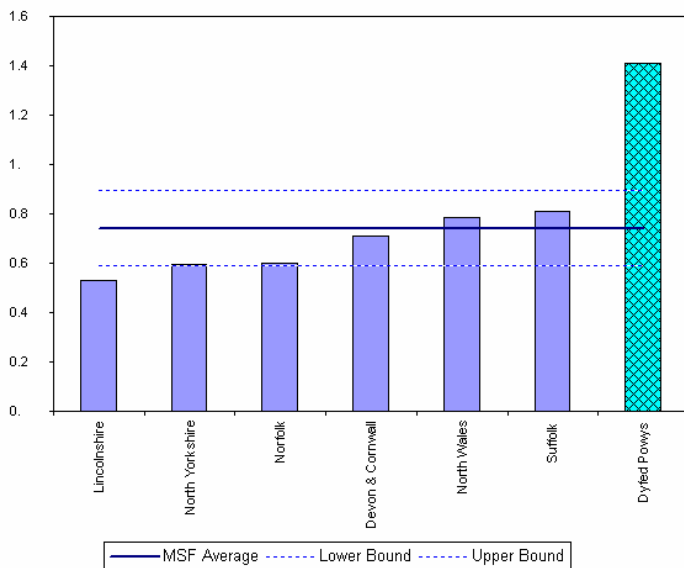


Monthly Sanction Detection Rates – July 2006

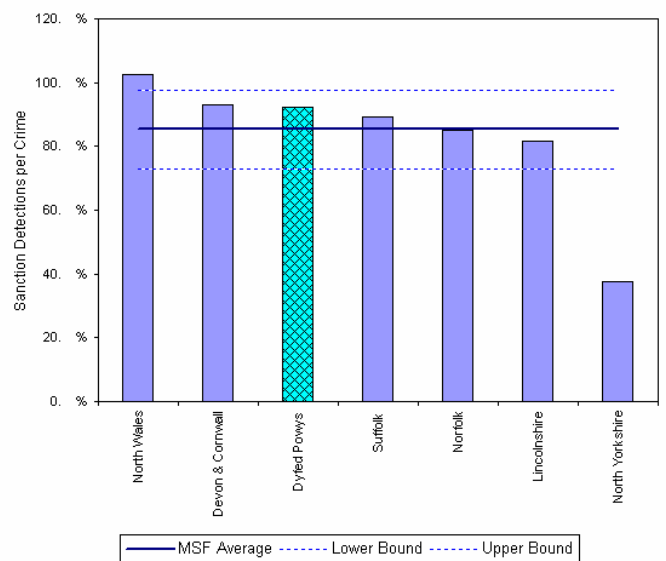


Total Drug Offences	YTD: Jul-06			Detection Rates YTD		Annual Trends SPLY		
	Recorded Offences	Sanction Detections	Total Detections	Sanction Detection Rate	Total Detection Rate	Recorded Offences	Diff in Number	% Change in Offences
THE FORCE	909	894	943	98.3%	103.7%	875	+ 34	+ 3.9%
Carmarthenshire	353	369	390	104.5%	110.5%	374	- 21	- 5.6%
Ceredigion	148	147	154	99.3%	104.1%	173	- 25	- 14.5%
Pembrokeshire	171	150	158	87.7%	92.4%	203	- 32	- 15.8%
Powys	237	228	241	96.2%	101.7%	125	+ 112	+ 89.6%

MSF – Crimes per 1000 Residents 01 April 2006 – 30 June 2006 (latest quarter)



MSF – Sanction detections (annual): 01 July 2005 – 30 June 2006 (latest)



Section Level Sanction Detection Summary

DYFED-POWYS POLICE

Total Recorded Crime & Domestic Burglary

Total Recorded Crimes: July 2006 YTD

Sanction Detection Rate	Recorded Offences	Sanction Detections	Sanction Detection Rate	SPLY Sanction Detections	SPLY Sanction Det Rate	Diff in Number of S Dets	% Change in No of S Dets.	SPLY Recorded Offences	Diff in Number	% Change in Offences
THE FORCE	10,955	4,486	40.9%	3,907	34.7%	+ 579	+ 14.8%	11,245	- 290	- 2.6%
Carmarthenshire	3,895	1,706	43.8%	1,395	34.1%	+ 311	+ 22.3%	4,087	- 192	- 4.7%
Amman/Towy (AW)	697	312	44.8%	281	39.4%	+ 31	+ 11.0%	714	- 17	- 2.4%
Carmarthen Town (AC)	597	275	46.1%	260	41.2%	+ 15	+ 5.8%	631	- 34	- 5.4%
Carmarthen Rural (AY)	330	137	41.5%	120	36.3%	+ 17	+ 14.2%	331	- 1	- 0.3%
Gwendraeth (AT)	612	204	33.3%	248	40.3%	- 44	- 17.7%	615	- 3	- 0.5%
Llanelli Town (AL)	1,126	479	42.5%	387	30.6%	+ 92	+ 23.8%	1,263	- 137	- 10.8%
Llanelli Rural (AZ)	533	252	47.3%	137	25.7%	+ 115	+ 83.9%	533	=	-
Ceredigion	1,485	658	44.3%	592	37.0%	+ 66	+ 11.1%	1,598	- 113	- 7.1%
Ceredigion North (BA)	818	351	42.9%	336	40.3%	+ 15	+ 4.5%	834	- 16	- 1.9%
Ceredigion South (BS)	667	307	46.0%	256	33.5%	+ 51	+ 19.9%	764	- 97	- 12.7%
Pembrokeshire	2,901	1,073	37.0%	991	34.7%	+ 82	+ 8.3%	2,855	+ 46	+ 1.6%
Fishguard (CF)	359	144	40.1%	101	32.7%	+ 43	+ 42.6%	309	+ 50	+ 16.2%
Haverfordwest (CH)	747	290	38.8%	208	31.8%	+ 82	+ 39.4%	655	+ 92	+ 14.0%
Milford Haven (CM)	586	241	41.1%	223	39.3%	+ 18	+ 8.1%	567	+ 19	+ 3.4%
Pembroke Dock (CP)	668	213	31.9%	291	37.5%	- 78	- 26.8%	777	- 109	- 14.0%
Tenby (CT)	541	185	34.2%	168	30.7%	+ 17	+ 10.1%	547	- 6	- 1.1%
Powys	2,674	1,049	39.2%	929	34.3%	+ 120	+ 12.9%	2,705	- 31	- 1.1%
Brecon (DB)	675	228	33.8%	192	29.8%	+ 36	+ 18.8%	644	+ 31	+ 4.8%
Llandrindod Wells (DL)	458	172	37.6%	200	39.8%	- 28	- 14.0%	502	- 44	- 8.8%
Newtown (DN)	832	362	43.5%	270	31.7%	+ 92	+ 34.1%	851	- 19	- 2.2%
Welshpool (DW)	521	223	42.8%	185	38.0%	+ 38	+ 20.5%	487	+ 34	+ 7.0%
Ystradgynlais (DY)	188	64	34.0%	82	37.1%	- 18	- 22.0%	221	- 33	- 14.9%

Total Domestic Burglary : July 2006 YTD

Sanction Detection Rate	Recorded Offences	Sanction Detections	Sanction Detection Rate	SPLY Sanction Detections	SPLY Sanction Det Rate	Diff in Number of S Dets	% Change in No of S Dets.	SPLY Recorded Offences	Diff in Number	% Change in Offences
THE FORCE	257	65	25.3%	66	22.5%	- 1	- 1.5%	293	- 36	- 12.3%
Carmarthenshire	99	33	33.3%	18	15.3%	+ 15	+ 83.3%	118	- 19	- 16.1%
Amman/Towy (AW)	16	1	6.3%	5	27.8%	- 4	- 80.0%	18	- 2	- 11.1%
Carmarthen Town (AC)	8	2	25.0%	3	27.3%	- 1	- 33.3%	11	- 3	- 27.3%
Carmarthen Rural (AY)	6	1	16.7%	3	37.5%	- 2	- 66.7%	8	- 2	- 25.0%
Gwendraeth (AT)	13	0	0.0%	5	26.3%	- 5	- 100.0%	19	- 6	- 31.6%
Llanelli Town (AL)	35	11	31.4%	3	6.4%	+ 8	+ 266.7%	47	- 12	- 25.5%
Llanelli Rural (AZ)	21	14	66.7%	1	6.7%	+ 13	####%	15	+ 6	+ 40.0%
Ceredigion	33	9	27.3%	6	20.0%	+ 3	+ 50.0%	30	+ 3	+ 10.0%
Ceredigion North (BA)	22	7	31.8%	4	20.0%	+ 3	+ 75.0%	20	+ 2	+ 10.0%
Ceredigion South (BS)	11	2	18.2%	2	20.0%	=	=	10	+ 1	+ 10.0%
Pembrokeshire	62	12	19.4%	20	27.0%	- 8	- 40.0%	74	- 12	- 16.2%
Fishguard (CF)	8	3	37.5%	3	50.0%	=	=	6	+ 2	+ 33.3%
Haverfordwest (CH)	20	3	15.0%	5	18.5%	- 2	- 40.0%	27	- 7	- 25.9%
Milford Haven (CM)	15	3	20.0%	4	25.0%	- 1	- 25.0%	16	- 1	- 6.3%
Pembroke Dock (CP)	13	2	15.4%	4	25.0%	- 2	- 50.0%	16	- 3	- 18.8%
Tenby (CT)	6	1	16.7%	4	44.4%	- 3	- 75.0%	9	- 3	- 33.3%
Powys	63	11	17.5%	22	31.0%	- 11	- 50.0%	71	- 8	- 11.3%
Brecon (DB)	15	3	20.0%	1	10.0%	+ 2	+ 200.0%	10	+ 5	+ 50.0%
Llandrindod Wells (DL)	12	1	8.3%	8	47.1%	- 7	- 87.5%	17	- 5	- 29.4%
Newtown (DN)	13	4	30.8%	10	32.3%	- 6	- 60.0%	31	- 18	- 58.1%
Welshpool (DW)	14	3	21.4%	3	27.3%	=	=	11	+ 3	+ 27.3%
Ystradgynlais (DY)	9	0	0.0%	0	No Calc	=	-	2	+ 7	+ 350.0%

Section Level Sanction Detection Summary

DYFED-POWYS POLICE

Total Violent Crime and Total Vehicle Crime

Total Violent Recorded Crimes: July 2006 YTD

Sanction Detection Rate	Recorded Offences	Sanction Detections	Sanction Detection Rate	SPLY Sanction Detections	SPLY Sanction Det Rate	Diff in Number of S Dets	% Change in No of S Dets.	SPLY Recorded Offences	Diff in Number	% Change in Offences
THE FORCE	3,230	1,837	56.9%	1,405	45.7%	+ 432	+ 30.7%	3,077	+ 153	+ 5.0%
Carmarthenshire	1,139	683	60.0%	479	45.1%	+ 204	+ 42.6%	1,061	+ 78	+ 7.4%
Amman/Towy (AW)	168	94	56.0%	56	41.5%	+ 38	+ 67.9%	135	+ 33	+ 24.4%
Carmarthen Town (AC)	191	119	62.3%	109	55.1%	+ 10	+ 9.2%	198	- 7	- 3.5%
Carmarthen Rural (AY)	96	49	51.0%	39	52.0%	+ 10	+ 25.6%	75	+ 21	+ 28.0%
Gwendraeth (AT)	178	68	38.2%	47	28.3%	+ 21	+ 44.7%	166	+ 12	+ 7.2%
Llanelli Town (AL)	365	225	61.6%	137	40.5%	+ 88	+ 64.2%	338	+ 27	+ 8.0%
Llanelli Rural (AZ)	141	93	66.0%	56	37.6%	+ 37	+ 66.1%	149	- 8	- 5.4%
Ceredigion	397	211	53.1%	195	46.1%	+ 16	+ 8.2%	423	- 26	- 6.1%
Ceredigion North (BA)	210	109	51.9%	124	53.0%	- 15	- 12.1%	234	- 24	- 10.3%
Ceredigion South (BS)	187	102	54.5%	71	37.6%	+ 31	+ 43.7%	189	- 2	- 1.1%
Pembrokeshire	908	489	53.9%	325	45.2%	+ 164	+ 50.5%	719	+ 189	+ 26.3%
Fishguard (CF)	106	64	60.4%	32	42.7%	+ 32	+ 100.0%	75	+ 31	+ 41.3%
Haverfordwest (CH)	257	125	48.6%	71	37.6%	+ 54	+ 76.1%	189	+ 68	+ 36.0%
Milford Haven (CM)	178	112	62.9%	83	48.0%	+ 29	+ 34.9%	173	+ 5	+ 2.9%
Pembroke Dock (CP)	234	115	49.1%	68	42.0%	+ 47	+ 69.1%	162	+ 72	+ 44.4%
Tenby (CT)	133	73	54.9%	71	59.2%	+ 2	+ 2.8%	120	+ 13	+ 10.8%
Powys	786	454	57.8%	406	46.5%	+ 48	+ 11.8%	874	- 88	- 10.1%
Brecon (DB)	189	115	60.8%	89	46.6%	+ 26	+ 29.2%	191	- 2	- 1.0%
Llandrindod Wells (DL)	122	68	55.7%	98	60.5%	- 30	- 30.6%	162	- 40	- 24.7%
Newtown (DN)	309	172	55.7%	109	36.2%	+ 63	+ 57.8%	301	+ 8	+ 2.7%
Welshpool (DW)	119	72	60.5%	80	53.0%	- 8	- 10.0%	151	- 32	- 21.2%
Ystradgynlais (DY)	47	27	57.4%	30	43.5%	- 3	- 10.0%	69	- 22	- 31.9%

Total Vehicle Crimes: July 2006 YTD

Sanction Detection Rate	Recorded Offences	Sanction Detections	Sanction Detection Rate	SPLY Sanction Detections	SPLY Sanction Det Rate	Diff in Number of S Dets	% Change in No of S Dets.	SPLY Recorded Offences	Diff in Number	% Change in Offences
THE FORCE	687	138	20.1%	89	13.0%	+ 49	+ 55.1%	684	+ 3	+ 0.4%
Carmarthenshire	238	46	19.3%	32	10.9%	+ 14	+ 43.8%	294	- 56	- 19.0%
Amman/Towy (AW)	40	6	15.0%	9	19.1%	- 3	- 33.3%	47	- 7	- 14.9%
Carmarthen Town (AC)	22	1	4.5%	1	4.5%	=	=	22	=	-
Carmarthen Rural (AY)	25	4	16.0%	2	12.5%	+ 2	+ 100.0%	16	+ 9	+ 56.3%
Gwendraeth (AT)	50	2	4.0%	8	15.7%	- 6	- 75.0%	51	- 1	- 2.0%
Llanelli Town (AL)	60	13	21.7%	7	6.4%	+ 6	+ 85.7%	110	- 50	- 45.5%
Llanelli Rural (AZ)	41	9	22.0%	6	12.5%	+ 3	+ 50.0%	48	- 7	- 14.6%
Ceredigion	101	41	40.6%	16	21.6%	+ 25	+ 156.3%	74	+ 27	+ 36.5%
Ceredigion North (BA)	33	3	9.1%	7	21.9%	- 4	- 57.1%	32	+ 1	+ 3.1%
Ceredigion South (BS)	68	38	55.9%	9	21.4%	+ 29	+ 322.2%	42	+ 26	+ 61.9%
Pembrokeshire	180	19	10.6%	23	13.8%	- 4	- 17.4%	167	+ 13	+ 7.8%
Fishguard (CF)	24	1	4.2%	2	8.0%	- 1	- 50.0%	25	- 1	- 4.0%
Haverfordwest (CH)	32	3	9.4%	3	12.0%	=	=	25	+ 7	+ 28.0%
Milford Haven (CM)	35	2	5.7%	7	28.0%	- 5	- 71.4%	25	+ 10	+ 40.0%
Pembroke Dock (CP)	44	3	6.8%	4	9.3%	- 1	- 25.0%	43	+ 1	+ 2.3%
Tenby (CT)	45	10	22.2%	7	14.3%	+ 3	+ 42.9%	49	- 4	- 8.2%
Powys	168	32	19.0%	18	12.1%	+ 14	+ 77.8%	149	+ 19	+ 12.8%
Brecon (DB)	37	6	16.2%	2	4.3%	+ 4	+ 200.0%	46	- 9	- 19.6%
Llandrindod Wells (DL)	29	7	24.1%	4	17.4%	+ 3	+ 75.0%	23	+ 6	+ 26.1%
Newtown (DN)	47	13	27.7%	4	10.8%	+ 9	+ 225.0%	37	+ 10	+ 27.0%
Welshpool (DW)	27	3	11.1%	4	14.8%	- 1	- 25.0%	27	=	-
Ystradgynlais (DY)	28	3	10.7%	4	25.0%	- 1	- 25.0%	16	+ 12	+ 75.0%

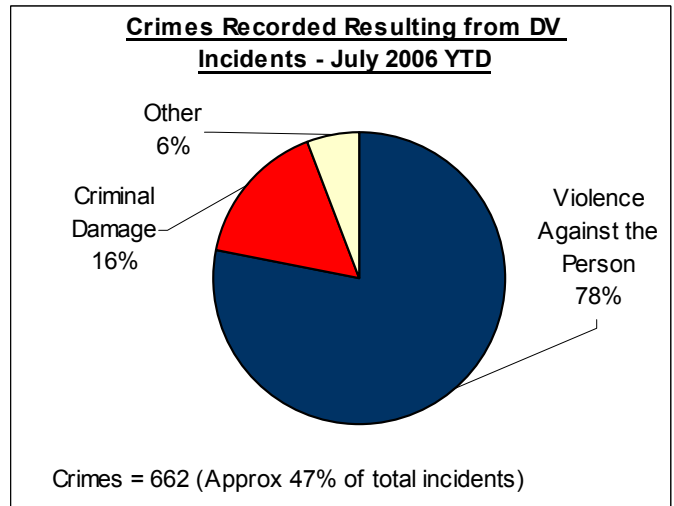
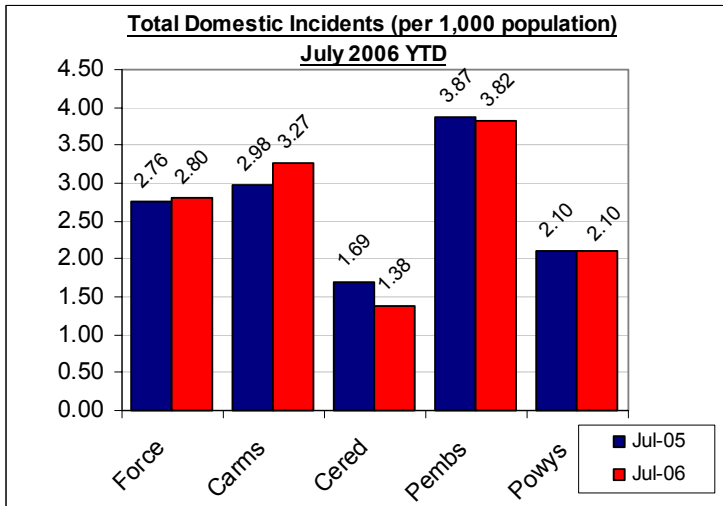
Domestic Incidents

DYFED POWYS POLICE

SPI 8A TARGET -38% OF INCIDENTS WITH AN ARREST MADE

LOCAL TARGET – 25 % OF TOTAL INCIDENTS INVOLVING REPEAT VICTIMS

Please note figures provided here are reliant on force systems being updated and remain **provisional only**. For the latest detailed information please contact your local Public Protection Unit (PPU) for further details.



Section & Divisional Summary – July 2006 YTD

Section	Incidents		Total Arrest Rate		Crimes & Sanction Detections			Repeat Victims	Jul 2005 (SPLY)	
	Total Incidents	Arrests	Total Arrest Rate	Crimes	% Sanction Detection Rate	Arrest Rate for Crimes	% Repeats (12mths data)**	Total Incidents	Annual % Change	
Ammanford/Towy (AW)	110	46	41.8%	50	40.0%	70.0%	18.0%	71	54.9%	
Carmarthen (AC)	70	36	51.4%	35	51.4%	77.1%	14.5%	68	2.9%	
Carmarthen Rural (AY)	53	20	37.7%	21	57.1%	71.4%	12.2%	37	43.2%	
Gwendraeth (AT)	124	55	44.4%	52	69.2%	80.8%	19.6%	102	21.6%	
Llanelli (AL)	119	51	42.9%	66	45.5%	63.6%	24.0%	150	-20.7%	
Llanelli Rural (AZ)	104	44	42.3%	39	53.8%	79.5%	24.5%	102	2.0%	
Carmarthenshire	580	252	43.4%	263	52.1%	73.0%	19.9%	530	9.4%	
Ceredigion North (BN)	54	30	55.6%	29	48.3%	89.7%	14.6%	79	-31.6%	
Ceredigion South (BS)	54	31	57.4%	29	51.7%	79.3%	17.2%	53	1.9%	
Ceredigion	108	61	56.5%	58	50.0%	84.5%	15.8%	132	-18.2%	
Fishguard (CF)	54	32	59.3%	29	55.2%	89.7%	24.2%	63	-14.3%	
Haverfordwest (CH)	88	43	48.9%	45	42.2%	62.2%	27.8%	98	-10.2%	
Milford Haven (CM)	114	50	43.9%	52	67.3%	82.7%	25.8%	114	0.0%	
Pembroke Dock (CP)	130	62	47.7%	58	50.0%	77.6%	29.7%	115	13.0%	
Tenby (CT)	62	22	35.5%	24	37.5%	70.8%	15.5%	64	-3.1%	
Pembrokeshire	448	209	46.7%	208	51.9%	76.4%	25.9%	454	-1.3%	
Brecon (DB)	52	25	48.1%	28	64.3%	78.6%	14.6%	53	-1.9%	
Llandrindod Wells (DL)	48	16	33.3%	20	55.0%	70.0%	22.8%	43	11.6%	
Newtown (DN)	112	60	53.6%	57	47.4%	86.0%	24.2%	86	30.2%	
Welshpool (DW)	31	15	48.4%	14	85.7%	92.9%	18.9%	49	-36.7%	
Ystradgynlais (DY)	31	14	45.2%	14	78.6%	92.9%	9.1%	43	-27.9%	
Powys	274	130	47.4%	133	59.4%	83.5%	19.5%	274	0.0%	
Force	1410	652	46.2%	662	53.3%	77.2%	21.4%	1390	1.4%	

Source: LCS Recorded Domestic Incident Details (all data extracted 02/08/06).

** Repeat Victims performance is based on 12-months total incident data and not fiscal year-to-date and includes **all victims** – not only those involving both the same victim **and** offender.

The introduction of the Serious Organised Crime and Police Act 2005 (SOCPA) on 01/01/06 has resulted in the withdrawal of the term 'power of arrest'. As a consequence of this it has ceased to be a discrete performance measure.

User Satisfaction

CITIZEN FOCUS PERFORMANCE ASSESSMENT DOMAIN

MARCH 2006 DATA – LATEST

These measures constitute the citizen focus domain in the police performance assessment framework. All victims of crimes (domestic burglary, violent crime and vehicle crime only) or those involved in road traffic collisions are surveyed within a short period of coming into contact with the force to gain their views on the service they received.

For performance assessment purposes, these measurements of user satisfaction are grouped into five main theme:

- SPI 1a – Satisfaction with making contact with the police: 'Ease of Contact' **(2005/06 TARGET 92%)**
- SPI 1b – Satisfaction with the action taken by the police: 'Actions' **(2005/06 TARGET 84%)**
- SPI 1c – Satisfaction with being kept informed of progress: 'Follow-Up' **(2005/06 TARGET 70%)**
- SPI 1d – Satisfaction with their treatment by staff: 'Treatment' **(2005/06 TARGET 92%)**
- SPI 1e – Satisfaction with the overall service provided: 'Whole Experience' **(2005/06 TARGET 85%)**

Force User Satisfaction – Year Ending March 2006

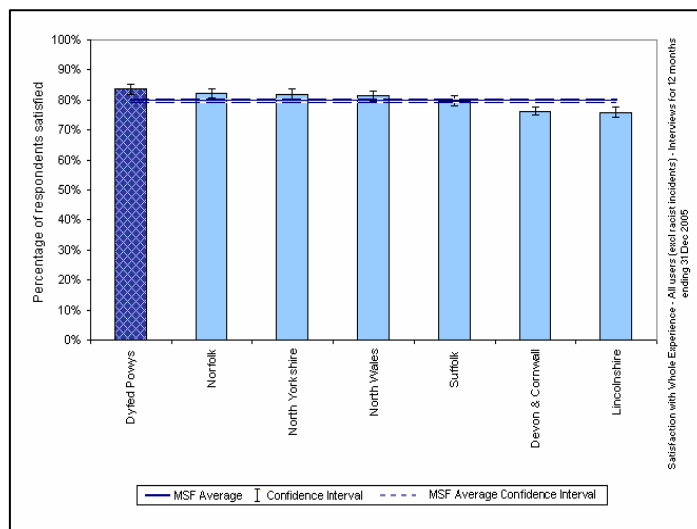
Comparative User Satisfaction 2005/06

Those persons completely, very or fairly satisfied.

Satisfaction with...	DPP Force	MSF Average	Difference
Ease of Contact	91.4%	89.6%	+1.8%
Actions	82.5%	77.3%	+5.2%
Follow-up	70.3%	63.2%	+7.1%
Treatment	91.1%	89.9%	+1.2%
Whole experience	83.6%	79.8%	+3.8%

Source: Home Office / Iquanta, June 2006

MSF – Comparative Force Performance - Whole Experience



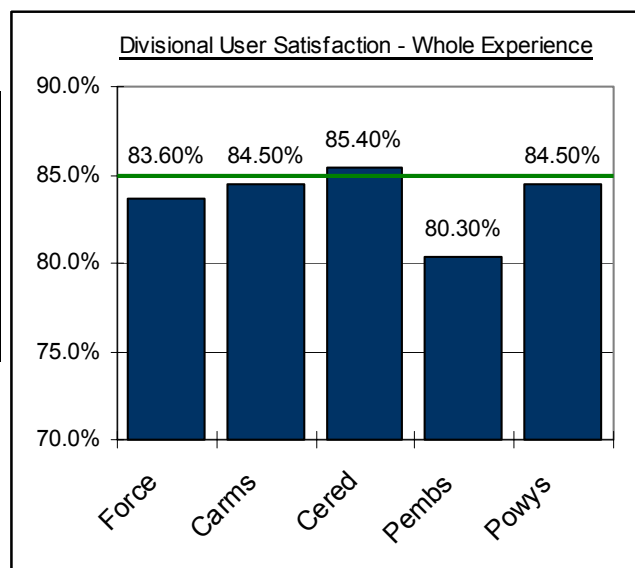
Source: Home Office / Iquanta, April 2006

Divisional User Satisfaction – Year Ending March 2006 (Apr 05 – Mar 06)

BCU user Satisfaction Summary 2005/06

Year Ending March 2006	% Satisfied (Very, Completely and Fairly Satisfied)					Target
	Force	Carms	Cered	Pembs	Powys	
Ease of Contact	91.4%	91.1%	93.9%	91.3%	91.9%	92%
Actions	82.5%	83.5%	84.0%	78.9%	83.6%	84%
Follow-up	70.3%	70.8%	73.1%	66.2%	70.8%	70%
Treatment	91.1%	90.3%	94.5%	88.3%	91.7%	92%
Whole experience	83.6%	84.3%	85.8%	79.2%	84.7%	85%

Source: Home Office / Iquanta, June 2006

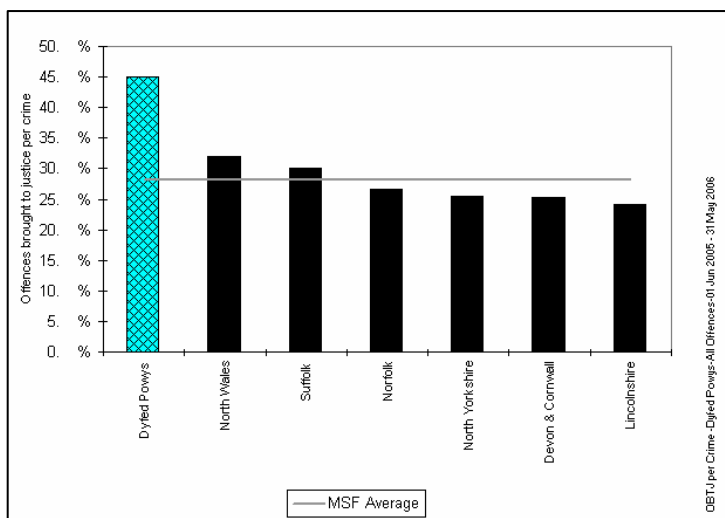
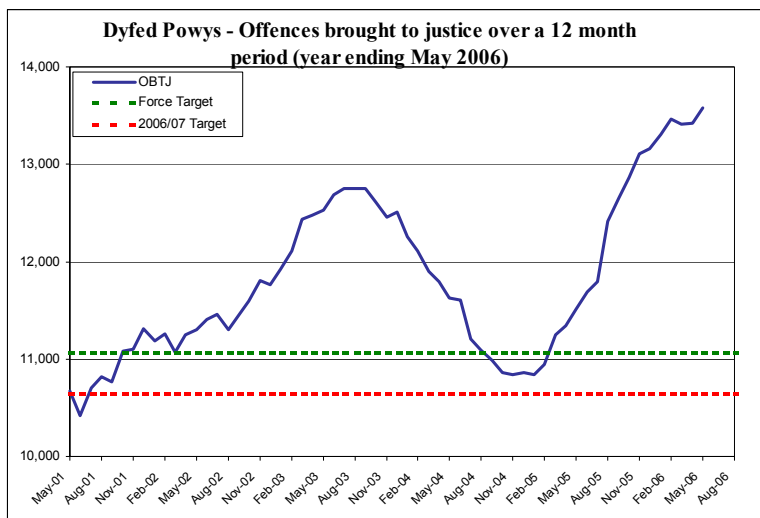


Additional comparative data is available on a quarterly basis. For further information on this or Iquanta contact Corporate Services (ext 6654).

Narrowing the Justice Gap - OFFENCES BROUGHT TO JUSTICE & SANCTION DETECTIONS

TARGET 2006/07 : Force Target - 11,068 / Home Office objective - 10,655 total OBJT (Offences Brought to Justice)

Total Offences Brought to Justice (OBJT) – Force & MSF Comparisons



Offences brought to justice – 12 monthly data	TIC	PND	Formal Warnings	Cautions	Convictions	OBJT
Baseline: Apr 01 – Mar 02	420	-	-	3,698	6,900	11,068
Latest Annual Data : May 05 – April 06	429	840	1,251	4,812	6,244	13,576
Change	+2%	-	-	+30%	-10%	+23%
2005/06 Force Target (0%- 11,068 OBJT)	YES	n/a	YES	YES	NO	YES

Divisional Contribution Toward OBJT Volumes – Approximate Latest

Please note this data is provided as a guide only - it is provided here for information.

Approx OBJT YTD	Apr – May 06	Target**	Diff from Target
Carmarthenshire	872	659	32.3%
Ceredigion	299	283	5.7%
Pembrokeshire	518	484	7.0%
Powys	545	420	29.8%
Force	2234	1845	21.1%

Target Pro-Rata Based on 1 months performance

** - This is the target profile required to attain the end of year target of 11,068 OBJT. (The divisional target breakdown is based on mirroring 2005/06 contribution toward total force sanction detections).

Sanction Detection Volume Performance YTD – Current Clear-Up Breakdown (Annual % Change)

The current volume of sanction detections (July 06 YTD) is up 15% on the same period last year to stand at 4,486 (up 579 from 3,907).

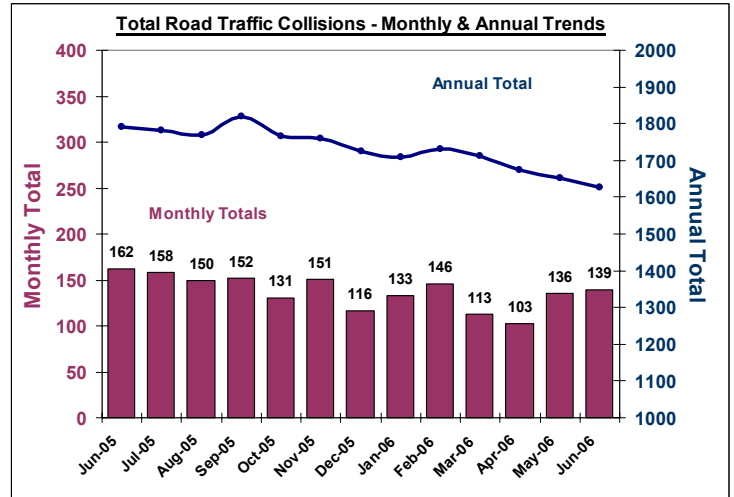
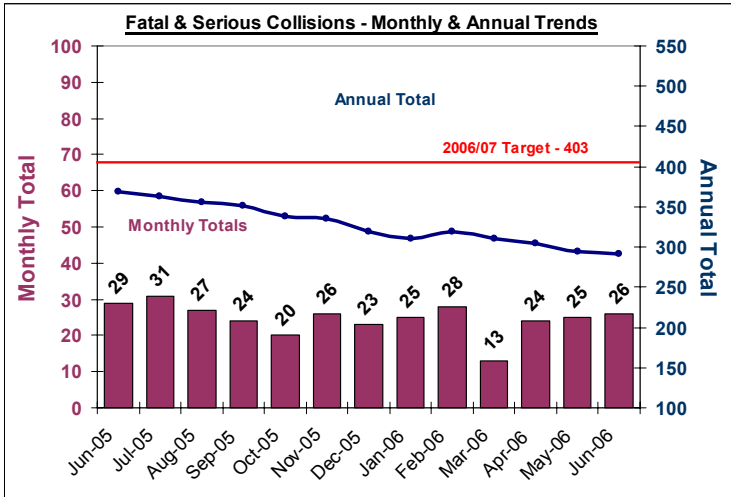
Area – July YTD	Charged	Summons	Cautioned	TIC	PND	F. Warning for Cannabis	Total Sanction Dets
Carmarthenshire	714 (+3%)	19 (+19%)	602 (+45%)	62 (33 SPLY)	102 (+19%)	207 (+33%)	1706 (+22%)
Ceredigion	297 (+4%)	7 (-56%)	274 (+27%)	3 (11 SPLY)	38 (11 SPLY)	39 (-26%)	658 (+11%)
Pembrokeshire	428 (+13%)	7 (14 SPLY)	499 (+30%)	15 (100 SPLY)	84 (+31%)	41 (-21%)	1073 (+8%)
Powys	411 (-13%)	14(39 SPLY)	388 (+40%)	7 (39 SPLY)	108 (77 SPLY)	94 (+40%)	1049 (+13%)
Force	1850 (+1%)	47 (-45%)	1763 (+37%)	87 (-52%)	332 (+39%)	408 (+42%)	4486 (+15%)

Road Traffic Collisions

May Monthly Data Latest available

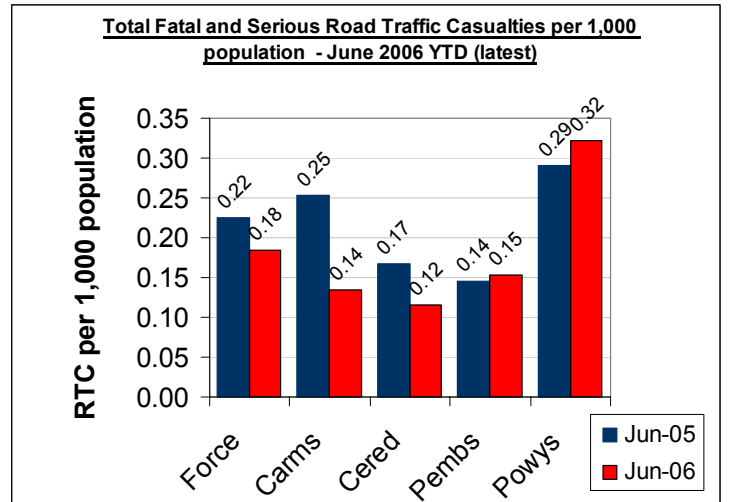
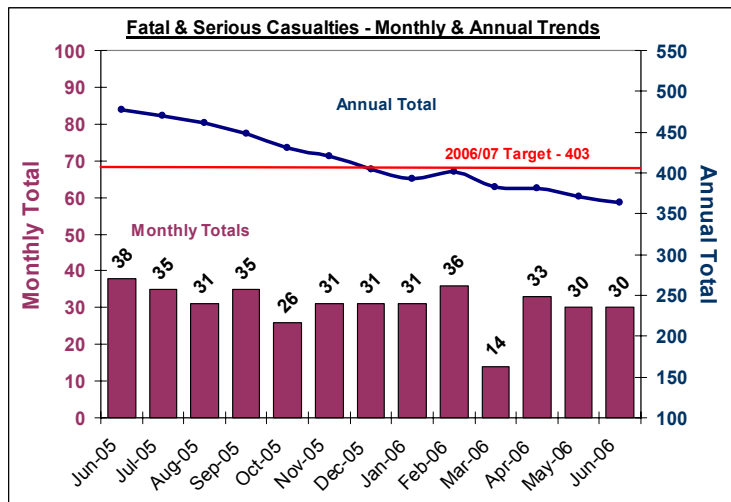
TARGET 2006/07: 403 FATAL AND SERIOUS COLLISIONS & CASUALTIES (0.8 PER 1,000 POPULATION)

COLLISIONS : Road Traffic Collisions – Monthly & Annual Trends (Jun 06 – latest)



Performance YTD (June 2006 YTD - latest)	FORCE	Carms	Cered	Pembs	Powys
Fatal Road Collisions YTD	13	4	0	0	9
Serious & Fatal Road Collisions YTD	75	20	8	15	32
Indicator - Per 1,000 population	0.14	0.11	0.10	0.13	0.24
On-Target (0.8 end of year – 0.20 pro rata)	YES	YES	YES	YES	NO
Fatal (SPLY)	12	6	1	1	4
Serious & Fatal (SPLY)	94	35	13	13	33

CASUALTIES: Road Traffic Casualties – 2010 Target Progress



June 2006 YTD (latest)	Force	Carms	Cered	Pembs	Powys
Number of people killed or seriously injured casualties	93	24	9	18	42
At 2010 Target Level*	YES	YES	YES	YES	YES
Number of Children (<=15 yrs) killed or seriously injured	5	4	0	0	1
At 2010 Target Level*	YES	YES	YES	YES	YES
Number of persons with slight injuries	460	161	51	120	128
At 2010 Target Level*	YES	YES	YES	YES	YES

* 2010 Targets Established with Roads Policing Strategy, Operations Dept & National Road Policing Targets. Progress towards Pro-Rata year-end 2010 target illustrated here

Source: MAAP RTC Database 11/08/06

Road Policing Performance

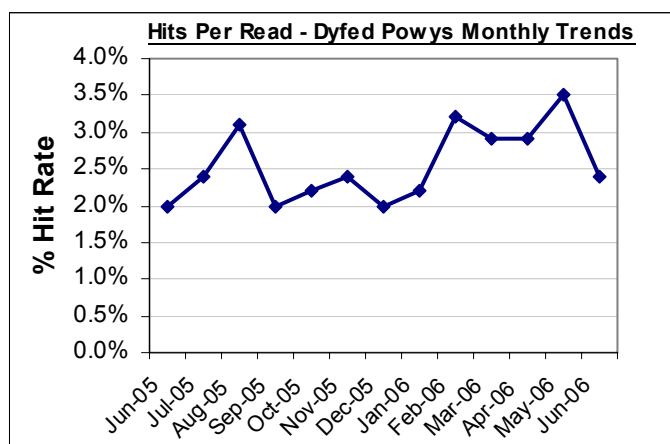
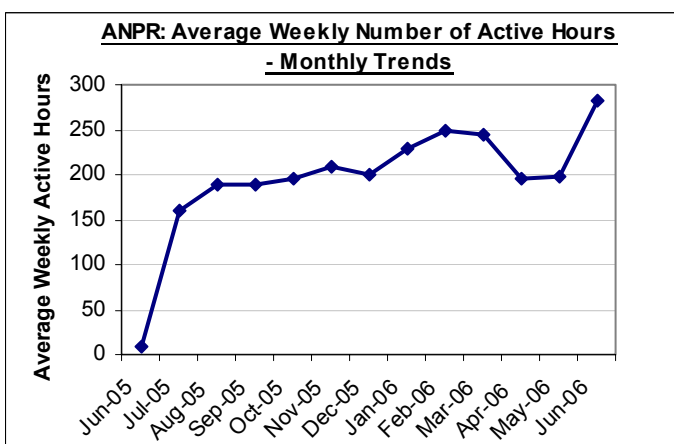
SELECTED MEASURES OF ROADS POLICING ACTIVITY 2006/07

These measures constitute a range of selected measures to illustrate performance with respect to roads policing. The measures are:

- BCU Breakdown of ANPR Performance
- Project Laser – Most Similar Forces Comparisons for ANPR
- S.59 Seizure of Vehicles Used in an Anti-Social Manner

BCU Breakdown of ANPR Performance (latest)

Covering the period: 01/04/2006 – 31/06/2006	Force	Carms	Cered	Pembs	Powys	Ports/Other
ANPR Reads	318273	38785	34666	78661	138864	27297
ANPR Hits	9175	591	959	2152	5374	99
Arrests*	111	2	7	11	91	-
Total No. Operational Hours	2698	210	299.7	464.5	1045.25	678.5
% Hits from Reads	2.9%	1.5%	2.8%	2.7%	3.9%	0.4%
Hits per Operational Hour	3.4	2.8	3.2	4.6	5.1	0.1



Project Laser – ANPR Performance Comparisons (latest)

April 2005 – March 2006 YTD	Dyfed Powys	MSF Average
Active Hours	8,103	4,738
Dedicated Officer Hours	8,230	8,070
Hits	12,006	24,797
Reads	483,613	868,182
% Hits from Reads	2.5%	2.8%
No. Hits per Dedicated Officer Hour	1.5	4.2
No. Reads per 1,000 population	960	1147

Source: Project Laser 3 ANPR Report

S.59 Seizure of Vehicles Used in an Anti-Social Manner

April 2006 – July 2006	Number of Incidents YTD				
Vehicles ...	Force	Carms	Cered	Pembs	Powys
Seized (+ SPLY)	1 (1)	0 (0)	0 (0)	1 (0)	0 (1)
Warned (+ SPLY)	15 (12)	2 (0)	0 (7)	11 (3)	2 (2)

Source: STORM Command & Control August 2006

Local Policing Domain – Force Summary

2006/07: LOCAL POLICING DOMAIN – LOCAL PRIORITIES AND TARGETS

These priorities constitute a range of selected priorities to illustrate performance within the Local Policing Domain for 2006/07. These are:

- Terrorism and Domestic Extremism:** Objective – To support the wider national endeavour in protecting the country from terrorism and domestic extremism.
- Class A Drugs :** Objective – To proactively target and disrupt Class A drug supply and distribution networks across and beyond the Force area
- Violent Crime :** Objective - To reduce levels of violent crime and seek to increase detection rates in this area.
- Anti-Social Behaviour :** Objective - To proactively tackle anti-social behaviour in conjunction with partners, providing greater reassurance to the public.

Measure	Targets		FORCE	CARMS	CERED	PEMBS	POWYS
Terrorism & Domestic Extremism							
<i>National Theme - not appropriate to set local measures</i>							
Class-A Drugs							
Number of Class-A drug offenders charged with trafficking	To increase the numbers of offenders charged by 10%	Apr-July 2006	31	9	9	11	2
		Apr-July 2005	23	9	4	5	5
		Difference	+8	0	+5	+6	-3
		% Change	34.8%	0.0%	125.0%	120.0%	-60.0%
Number of Class-A drug offences resulting in an offence brought to justice	To increase the numbers brought to justice by 10%		Data not available at present. Subject to two month time-lag				
Violent Crime							
Number of incidents involving victims of domestic violence who have been a victim in more than one incident in the previous 12-months (same offender involved)	To reduce the number of repeat incidents by 7%		FORCE	CARMS	CERED	PEMBS	POWYS
		Apr-July 2006	776	279	54	296	147
		Apr-July 2005	856	283	65	345	163
		Difference	-80	-4	-11	-49	-16
	% Change	-9.3%	-1.4%	-16.9%	-14.2%	-9.8%	
The Proportion of violent crime offences resulting in a sanction detection	To attain a detection rate of 58% (sanction detections)						
		Detection Rate	53.4%	54.0%	51.0%	51.0%	56.4%
Anti-Social Behaviour							
The number of Anti-Social Behaviour incidents reported to the police	To reduce the number of recorded incidents by 5%	Apr-July 2006	9708	3455	1133	2822	2227
		Apr-July 2005	9175	3417	1248	2524	1917
		Difference	533	38	-115	298	310
		% Change	5.8%	1.1%	-9.2%	11.8%	16.2%
The number of recorded Criminal Damage offences	To reduce the number of recorded offences by 3%	Apr-July 2006	2583	893	329	752	609
		Apr-July 2005	2756	954	384	830	588
		Difference	-173	-61	-55	-78	10
		% Change	-6.3%	-6.4%	-14.3%	-9.4%	3.6%

* *sanction detections are those offences resulting in a charge, summons, caution, taken into consideration at court, or where the offence results in a penalty notice for disorder or a formal warning for cannabis.*

Local Policing Domain – Section Summary

2006/07: LOCAL POLICING DOMAIN – LOCAL PRIORITIES AND TARGET CONTRIBUTION

Section Breakdown: April – July 2006 YTD

Class A Drugs; Domestic Violence; Violent Crime

Section	Class A Drugs				Violent Crime				Violent Crime Proportion violent offences resulting in sanction det. (Target - 58%)
	No. offenders charged with trafficking	% Change (Target - To increase the numbers of offenders charged up 10%)	SPLY	Diff	No. DV Repeats (same offender)	% Change (Target - To reduce the number of repeat incidents by 7%)	Baseline Data: Apr 05 - Mar 06	Diff	
Amman/Towy (AW)	1	-83.3%	6	-5	50	8.7%	46	4	56.0%
Carmarthen (AC)	0	No Change	0	0	21	-25.0%	28	-7	62.3%
Carmarthen Rural (AY)	2	No Calc	0	2	16	14.3%	14	2	51.0%
Gwendraeth (AT)	1	No Calc	0	1	57	21.3%	47	10	38.2%
Llanelli (AL)	3	0.0%	3	0	79	-16.0%	94	-15	61.6%
Llanelli Rural (AZ)	2	No Calc	0	2	56	3.7%	54	2	66.0%
CARMS	9	0.0%	9	0	279	-1.4%	283	-4	60.0%
Ceredigion North (BN)	7	75.0%	4	3	27	-30.8%	39	-12	51.9%
Ceredigion South (BS)	2	No Calc	0	2	27	3.8%	26	1	54.5%
CEREDIGION	9	125.0%	4	5	54	-16.9%	65	-11	53.1%
Fishguard (CF)	0	No Change	0	0	40	-16.7%	48	-8	60.4%
Haverfordwest (CH)	0	-100.0%	2	-2	69	-24.2%	91	-22	48.6%
Milford Haven (CM)	0	-100.0%	1	-1	68	-22.7%	88	-20	62.9%
Pembroke Dock (CP)	5	150.0%	2	3	98	12.6%	87	11	49.1%
Tenby (CT)	6	No Calc	0	6	21	-32.3%	31	-10	54.9%
PEMBS	11	120.0%	5	6	296	-14.2%	345	-49	53.9%
Brecon (DB)	0	No Change	0	0	23	-28.1%	32	-9	60.8%
Llandrindod Wells (DL)	0	No Change	0	0	32	-15.8%	38	-6	55.7%
Newtown (DN)	2	0.0%	2	0	65	38.3%	47	18	55.7%
Welshpool (DW)	0	-100.0%	3	-3	20	-25.9%	27	-7	60.5%
Ystradgynlais (DY)	0	No Change	0	0	7	-63.2%	19	-12	57.4%
POWYS	2	-60.0%	5	-3	147	-9.8%	163	-16	57.8%
FORCE	31	34.8%	23	8	776	-9.3%	856	-80	56.9%

Target for Sanction Detection Rate of Violent Crime is 58%. Any Section that is within 10% of this target is marked as reaching the target rate set.

Anti-Social Behaviour

Section	Anti-Social Behaviour				Anti-Social Behaviour			
	No. Anti-social Incidents	% change (Target - To reduce the number of recorded incidents by 5%)	SPLY	Diff	No. Criminal Damage Offences	% change (Target - To reduce the numbers of recorded Criminal Damage offences by 3%)	SPLY	Diff
Amman/Towy (AW)	617	-18.1%	753	-136	171	6.9%	160	11
Carmarthen (AC)	357	-29.9%	509	-152	122	-22.3%	157	-35
Carmarthen Rural (AY)	339	-4.8%	356	-17	62	-20.5%	78	-16
Gwendraeth (AT)	579	7.0%	541	38	133	-14.2%	155	-22
Llanelli (AL)	854	11.5%	766	88	276	11.3%	248	28
Llanelli Rural (AZ)	709	44.1%	492	217	129	-17.3%	156	-27
CARMS	3455	1.1%	3417	38	893	-6.4%	954	-61
Ceredigion North (BN)	603	-6.2%	643	-40	198	2.6%	193	5
Ceredigion South (BS)	530	-12.4%	605	-75	131	-31.4%	191	-60
CEREDIGION	1133	-9.2%	1248	-115	329	-14.3%	384	-55
Fishguard (CF)	369	37.2%	269	100	91	19.7%	76	15
Haverfordwest (CH)	637	20.4%	529	108	152	5.6%	144	8
Milford Haven (CM)	716	10.8%	646	70	175	-4.9%	184	-9
Pembroke Dock (CP)	617	9.4%	564	53	199	-30.2%	285	-86
Tenby (CT)	483	-6.4%	516	-33	135	-4.3%	141	-6
PEMBS	2822	11.8%	2524	298	752	-9.4%	830	-78
Brecon (DB)	528	6.2%	497	31	159	6.7%	149	10
Llandrindod Wells (DL)	432	6.9%	404	28	120	3.4%	116	4
Newtown (DN)	659	23.2%	535	124	196	13.3%	173	23
Welshpool (DW)	325	2.5%	317	8	106	7.1%	99	7
Ystradgynlais (DY)	283	72.6%	164	119	28	-45.1%	51	-23
POWYS	2227	16.2%	1917	310	609	3.6%	588	21
FORCE	9708	5.8%	9175	533	2583	-6.3%	2756	-173

PPAF Statutory Performance Indicator Summary

Reported Quarterly

HOME OFFICE POLICE PERFORMANCE ASSESSMENT FRAMEWORK MEASURES

This Data is Updated Quarterly – Latest: April 2005 – March 2006 (except where stated).

Activity	SPI Number	Indicator Description	2004/05 Performance	2005/06 Performance	Change	2005/06 End of Year Target
User Satisfaction Measures	1a	Satisfaction of victims of domestic burglary, violent crime, vehicle crime and road traffic collisions with respect to - a) making contact with the Police	92%	91%	-0.7%	92%
	1b	b) action taken by the Police	84%	83%	-0.2%	84%
	1c	c) Being kept informed of progress	70%	71%	1.2%	70%
	1d	d) Their treatment by staff	92%	91%	-0.5%	92%
	1e	e) the overall service provided	85%	84%	-0.9%	85%
Confidence	2a^	Using the BCS, the % of people who think their local police do a good job	NEW	56%	-	NEW
Fairness and Equality Measures	3a	Satisfaction of victims of racist incidents with respect to the overall service provided	79.2%	90.9%	11.7%	85%
	3b	From SPI 1(e), comparison of satisfaction for white users and users from visible minority ethnic groups with respect to the overall service provided.	White - 84.5% Ethnic - 71.7%	White - 84.0% Ethnic - 86.0%	White -0.5% Ethnic +14.3%	White - 85% Ethnic - 72%
	3c(i)	(i) % of PACE stop/searches which lead to arrest by ethnicity	White - 17.0% Ethnic - 27.2%	White - 14.1% Ethnic - 16.0%	White -2.9% Ethnic -11.2%	White - 20% Ethnic - 20%
	3d	Comparison of percentage detected of violence against the person offences by ethnicity of the victim (sanction detections)	White - 31.2% Ethnic - 31.5%	White - 58.7% Ethnic - 49.8%	White +27.5% Ethnic +18.3%	White - 31% Ethnic - 31%
	3e	Proportion of police recruits (ethnic) compared to the proportion of people from minority ethnic groups in the economically active population (EAP).	0.0%	1.3% of recruits 1.0% of EAP	-	NEW
	3f	Ratio of officers from minority ethnic groups resigning to all officer resignations	NEW	0.0%	NEW	NEW
	3g	% of female police officers compared to overall Force strength.	19.7%	21.1%	1.4%	19%
Measures of Crime Levels	4a^^	Using the British Crime Survey (a) the risk of personal crime; and	8%	8%	0.0%	8%
	4b^^	(b) the risk of household crime.	11%	11%	0.0%	11%
	5a	(a) Domestic Burglaries per 1,000 households.	5.06 (1042 crimes)	3.89 (801 crimes)	-1.17 (-241 crimes)	5.06 (1042 crimes)
	5b	(b) Violent crime per 1,000 population.	18.14 (8859 crimes)	16.26 (8191 crimes)	-1.88 (-494 crimes)	17.60 (8593 crimes)
	5c	(c) Robberies per 1,000 population.	0.08 (41 crimes)	0.08 (40 crimes)	-0.001 (-1 crime)	0.1 (48 crimes)
	5d	(d) Vehicle crime per 1,000 population.	4.77 (2331 crimes)	3.71 (1869 crimes)	-1.06 (-462 crimes)	4.77 (2331 crimes)
	5e^	(e) Life threatening crime and gun crime per 1,000 population.	0.28 (139 crimes)	0.38 (191 crimes)	+0.04 (+20 crimes)	0.28
	5f	(f) Acquisitive Crime per 1,000 population	NEW	6.52 (3280 crimes)	-	NEW
Offences Brought to Justice Measures (OBTJ)	6a	Number of notifiable/recorded offences resulting in convictions, caution or taken into consideration at court	10,730	13,391	+2661 OBTJ (+24.8%)	11,068
	6b	% of notifiable/recorded offences resulting in convictions, caution or taken into consideration at court	33.2%	43.8%	10.6%	NEW
Detection Measure	7a	% of notifiable/recorded offences resulting in charge, summons, caution or taken into consideration at court ('sanction detections')	32.5%	39.6%	7.1%	31%
Domestic Violence Measures	8a	Percentage of domestic violence incidents with a power of arrest where an arrest was made relating to the incident.	81.5%	83.7%	2.2%	80%
Traffic Measures	9a(i)	(i) Number of people killed in under 30 days or seriously injured in road traffic collisions	500 fatal or serious casualties	381 fatal or serious casualties	-119 casualties	391 fatal or serious casualties
	9a(ii)	(ii) Number of persons killed or seriously injured in road traffic collisions per 100million vehicle kilometres travelled.	10.12	7.71	-2.41	8.13
Quality of life Measures	10a^	Using the British Crime Survey a) fear of crime	9.0%	4.8%	-4.2%	10%
	10b^	Perceptions of anti-social behaviour; and	NEW	7.7%	-	NEW
	10c^	Perceptions of local drug use / drug dealing	NEW	22.5%	-	NEW
Resource Use Measures	11a	Percentage of police officer time spent on frontline duties	66.1%	TBC	-	68.5%
	12a	Delivery of cashable and non-cashable efficiency targets	NEW	NEW	-	NEW
	13a	Average number of working hours lost due to sickness per police officer.	92.8 hours	78.6 hours	-14.2 hours -15.3%	92.8 hours
	13b	Average number of working hours lost due to sickness by police staff.	80.7 hours	61.8 hours	-18.9 hours -23.4%	80.7 hours

^ - Year ending December 2005 Data: Latest Available

^^ - Data released July 2005: Latest Available