



Heddlu Dyfed-Powys Police

CRIME TRENDS UPDATE **August 2006**

Contents:

Headline Statistics	2
Most Frequent Recorded Offences Profile	3
Recorded Crimes and Detection Rates	4
Domestic Burglaries and Detection Rates	5
Other Burglary and Detection Rates	6
Violent Crime and Detection Rates	7
Vehicle Crime and Detection Rates	8
Criminal Damage and Detection Rates	9
Drugs Statistics and Detection Rates	10
Section Level Sanction Detection Summary	11
Domestic Incidents	13
User Satisfaction	14
Narrowing the Justice Gap	15
Road Traffic Collisions	16
Roads Policing Performance	17
Local Policing Domain	18
PPAF Statutory Performance Indicator Summary	20

Heddlu Dyfed Powys Police: Corporate Services



Recorded Crime:

- Total Recorded Crime is down by 2% (-249 crimes) compared to the same period last year (SPLY) to stand at 13,711 crimes. The monthly figure for August 2006 stands at 2,756, an increase of 2% (+41 offences) on the same month in 2005, but a 0.3% (-7 offences) decrease on the preceding month July 2006.
- Recorded detection performance has a total detection rate for the force at 43% (5,856 total detections) compared with 41% the previous year. The volume of total detections has increased by 2% (+86 detections). The sanction detection rate stands at 41% - this is consistent with the target rate of 40% (and compared with 35% recorded last year). The volume of sanction detections has increased by 625 or 13%.

Domestic Burglary:

- Total Domestic Burglary offences are down by 2% (-8 crimes) compared to the same period last year (SPLY) to stand at 339 crimes. The monthly figure for August 2006 stands at 82, an increase of 52% (+28 offences) on the same month in 2005, and a 17% (+12 offences) increase on the preceding month July 2006.
- Recorded detection performance remains consistent with last year, with the total detection rate for the force at 28% (96 detections) compared with 27% the previous year. The volume of total detections has increased by 2% (+2 detections). The sanction detection rate stands at 28% (up from 26% last year) with the volume of sanction detections increasing by 7% (+6).

Violent Crimes:

- Total Violent crime offences are up by 3% (+119 crimes) compared to the same period last year (SPLY) to stand at 3,948 crimes. The monthly figure for August 2006 stands at 718, a decrease of 5% (-34 offences) on the same month in 2005, and a 17% (-146 offences) decrease on the preceding month July 2006.
- Recorded detection performance stands at a total detection rate for the force of 60% (2,366 detections) consistent with 60% last year. The volume of total detections has increased by 3% (+70) over this period. Furthermore the sanction detection rate stands at 57% (compared with 47% last year) with the volume recorded up by 24% (+426 sanction detections).

Vehicle Crime:

- Total Vehicle crime is down by 0.5% (-4 crimes) compared to the same period last year (SPLY) to stand at 848 crimes. The monthly figure for August 2006 stands at 161, a fall of 4% (-7 offences) on the same month in 2005, and a 0.6% increase (+1 offences) on the preceding month July 2006.
- Recorded total detection stands at 19% (157 detections) up from 15% the previous year. The volume of total detections has increased by 26% (+32) over this period. The sanction detection rate stands at 18% (compared with 13% last year) with the volume up on the previous year (+45 sanction detections or 41%).

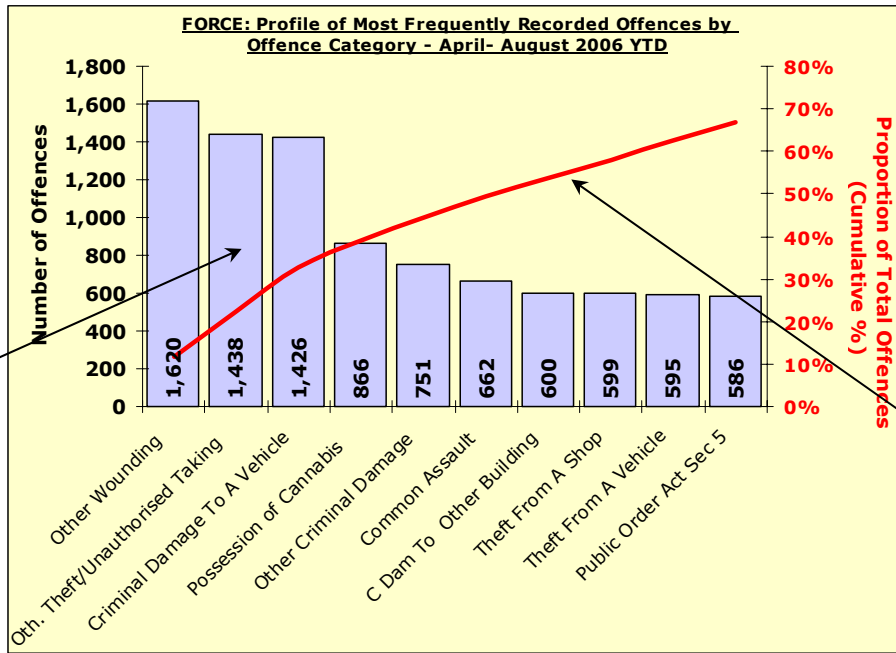
Criminal Damage:

- Total Criminal Damage has decreased by 4% (-148 crimes) compared to the same period last year (SPLY) to stand at 3,458. The monthly figure for August 2006 stands at 760, a rise of 5% (+36 offences) on the same month in 2005, and an increase of 19% (+120) on the previous month July 2006.
- Recorded detection performance stands at a total detection rate for the force of 25% (849 detections) consistent with 26% last year. The volume of total detections has decreased by 9% (-82) over this period. The sanction detection rate stands at 22% (compared with 21% last year) with the volume up 3% over this period (+22 sanction detections).

Most Frequent Recorded Offences Profile

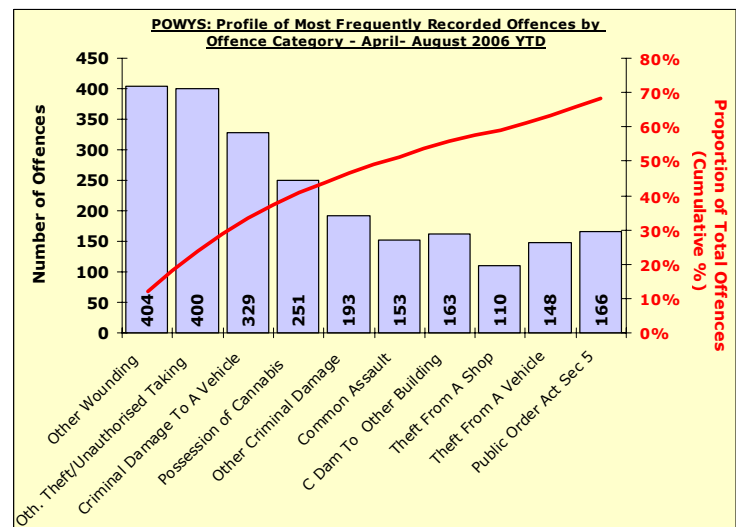
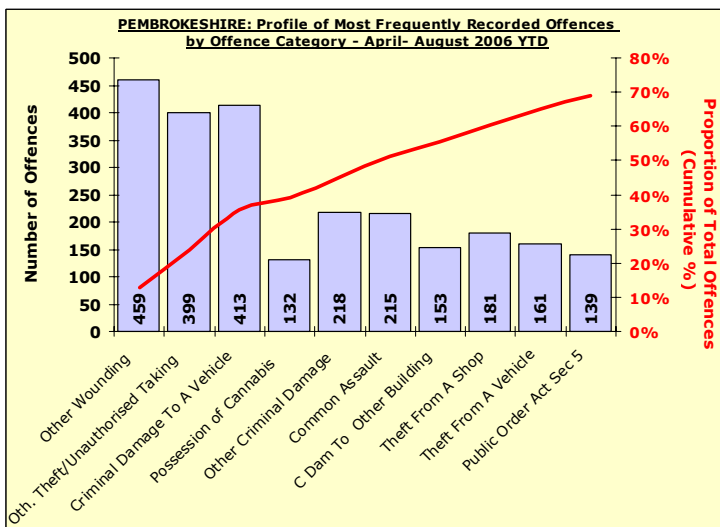
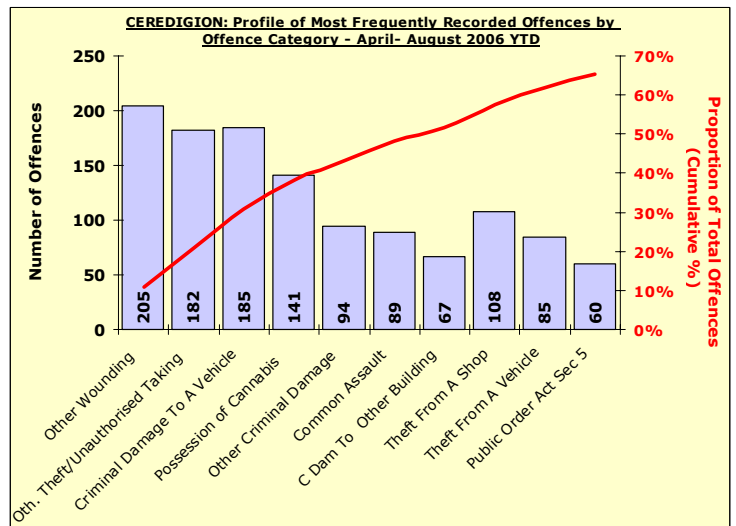
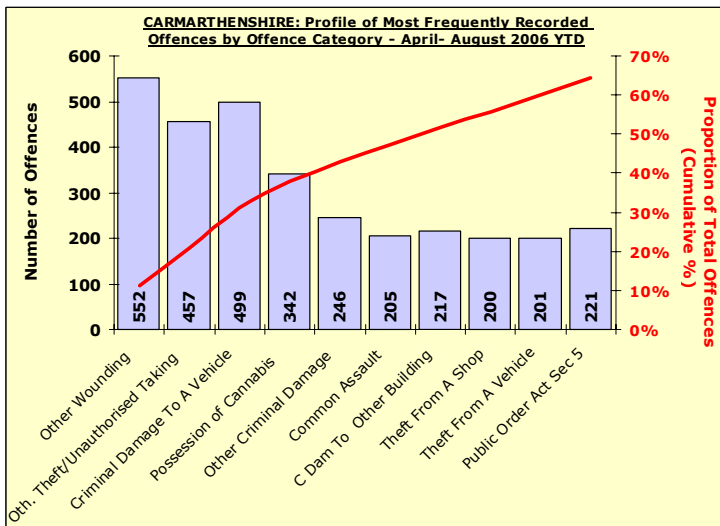
DYFED-POWYS POLICE

August 2006 YTD (Note : Divisional profiles are in the same sequence as forces' most frequent categories – for comparison)



Recorded offences in each category in order of volume.
(Note these can include a number of sub-categories)

The cumulative contribution of these offence categories toward the total volume of offences recorded.

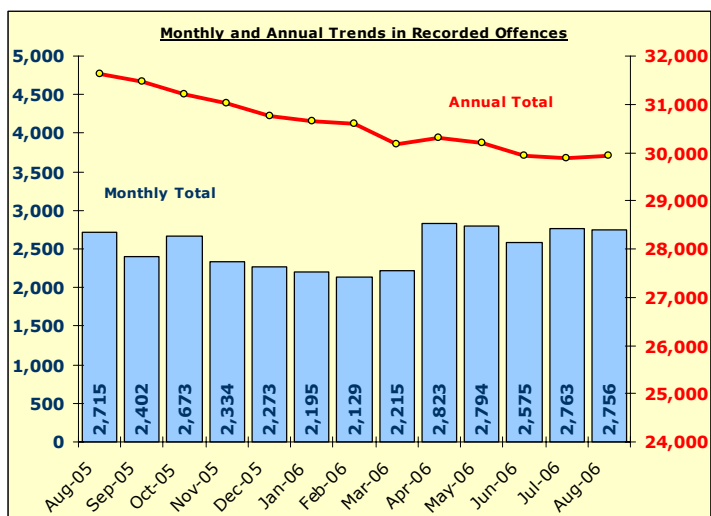


Total Recorded Crime

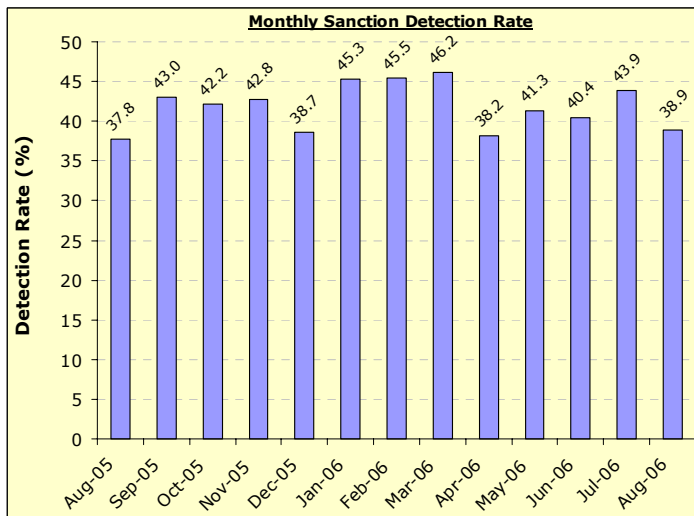
DYFED-POWYS POLICE

TARGET 2006/07 : NO REDUCTION TARGET – 40% SANCTION DETECTION RATE (Local Criminal Justice Board Target 32.8%)

Recorded Crime Levels – August 2006

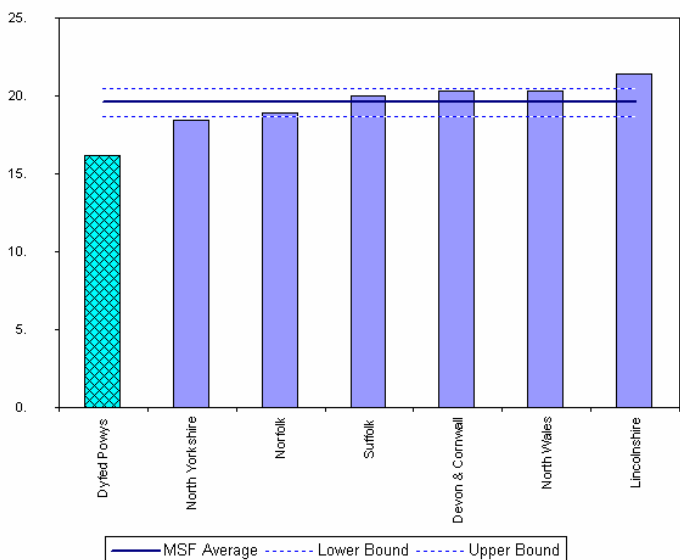


Monthly Sanction Detection Rates – August 2006



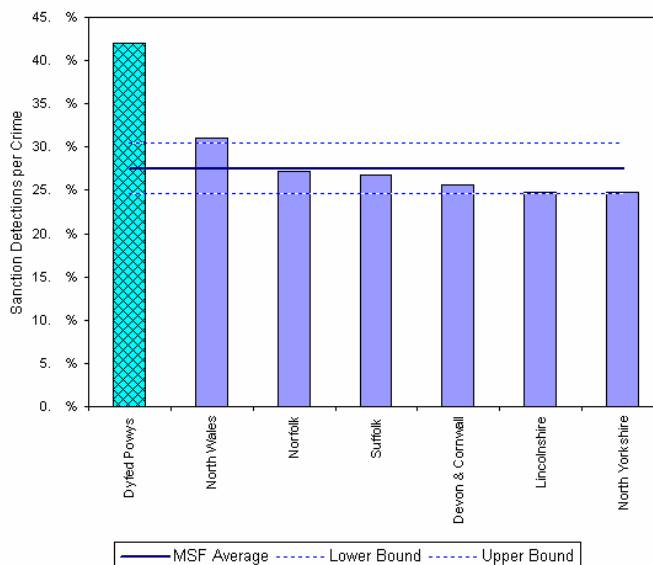
TOTAL ALL OFFENCES	YTD: Aug-06			Detection Rates YTD		Annual Trends SPLY		
	Recorded Offences	Sanction Detections	Total Detections	Sanction Detection Rate	Total Detection Rate	Recorded Offences	Diff in Number	% Change in Offences
THE FORCE	13,711	5,558	5,856	40.5%	42.7%	13,960	- 249	- 1.8%
Carmarthenshire	4,871	2,098	2,191	43.1%	45.0%	5,004	- 133	- 2.7%
Ceredigion	1,863	795	837	42.7%	44.9%	1,965	- 102	- 5.2%
Pembrokeshire	3,587	1,338	1,430	37.3%	39.9%	3,572	+ 15	+ 0.4%
Powys	3,390	1,327	1,398	39.1%	41.2%	3,419	- 29	- 0.8%

MSF – Crimes per 1000 Residents 01 May 2006 – 31 July 2006 (latest quarter)



Crimes per 1000 Residents - All Crimes - 01 May 2006 - 31 Jul 2006

MSF – Sanction detections (annual): 01 August 2005 – 31 July 2006 (latest)



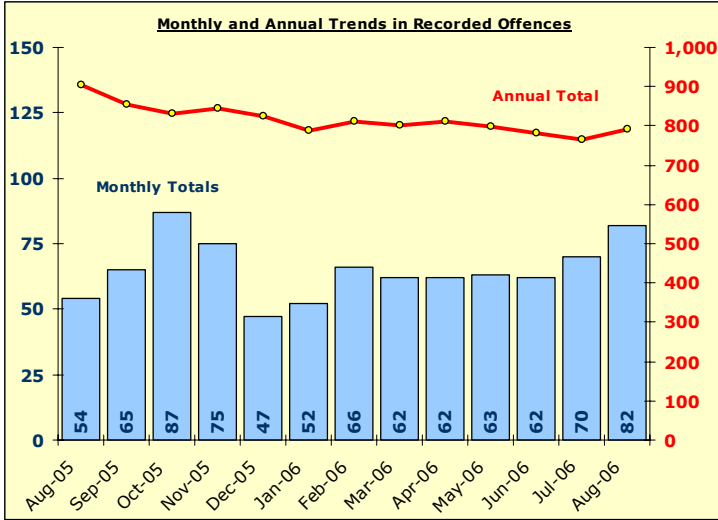
Bar chart MSF - Sanction Detections per Crime-Dyfed Powys-All Crimes-01 Aug 2005 - 31 Jul 2006

Domestic Burglary

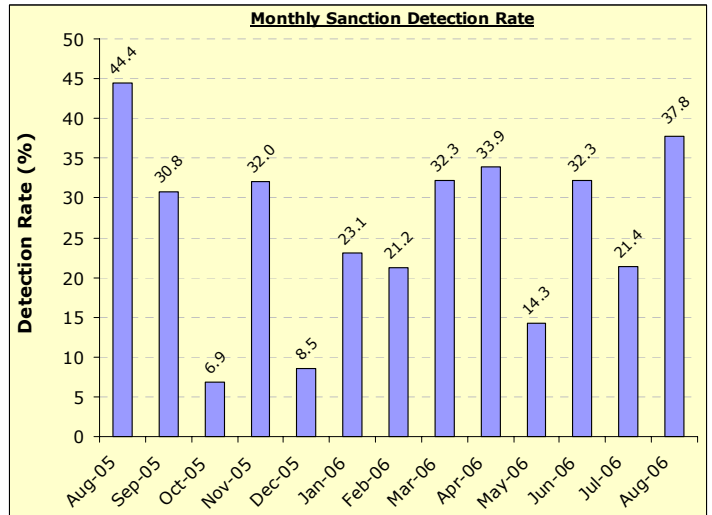
DYFED-POWYS POLICE

TARGET 2006/07 : 2% reduction in offences & 23% sanction detection rate

Recorded Crime Levels – August 2006

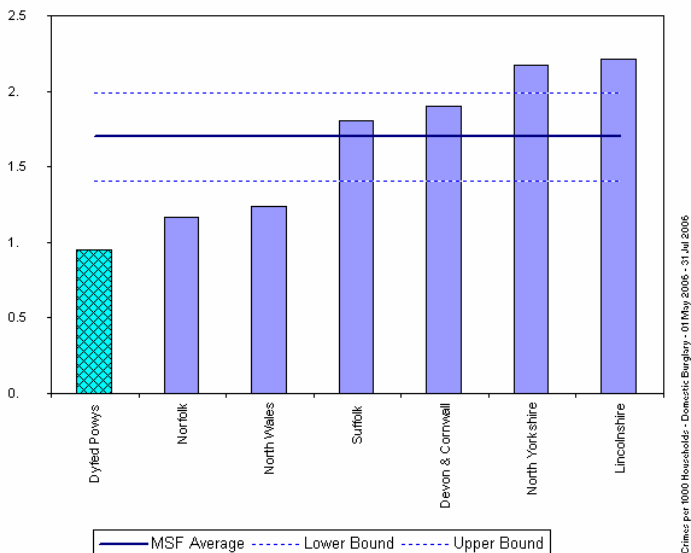


Monthly Sanction Detection Rates – August 2006

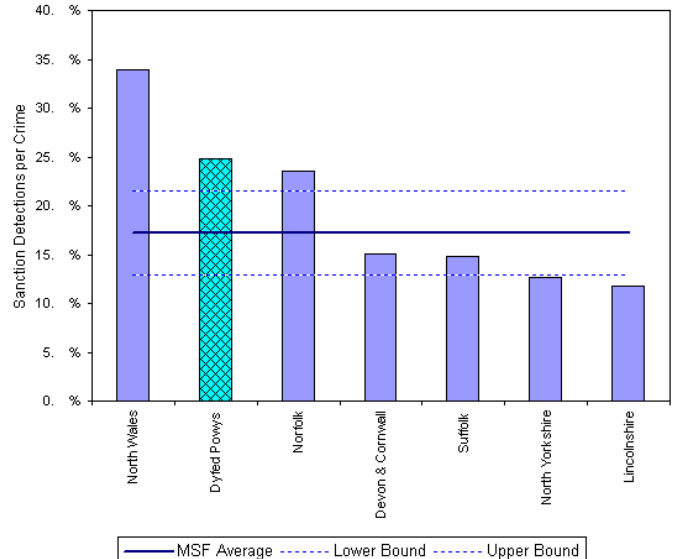


Total Domestic Burglary	YTD: Aug-06			Detection Rates YTD		Annual Trends SPLY		
	Recorded Offences	Sanction Detections	Total Detections	Sanction Detection Rate	Total Detection Rate	Recorded Offences	Diff in Number	% Change in Offences
THE FORCE	339	96	96	28.3%	28.3%	347	- 8	- 2.3%
Carmarthenshire	123	43	43	35.0%	35.0%	141	- 18	- 12.8%
Ceredigion	43	11	11	25.6%	25.6%	35	+ 8	+ 22.9%
Pembrokeshire	94	21	21	22.3%	22.3%	88	+ 6	+ 6.8%
Powys	79	21	21	26.6%	26.6%	83	- 4	- 4.8%

MSF – Crimes per 1000 Residents 01 May 2006 – 31 July 2006 (latest quarter)



MSF – Sanction detections (annual): 01 August 2005 – 31 July 2006 (latest)

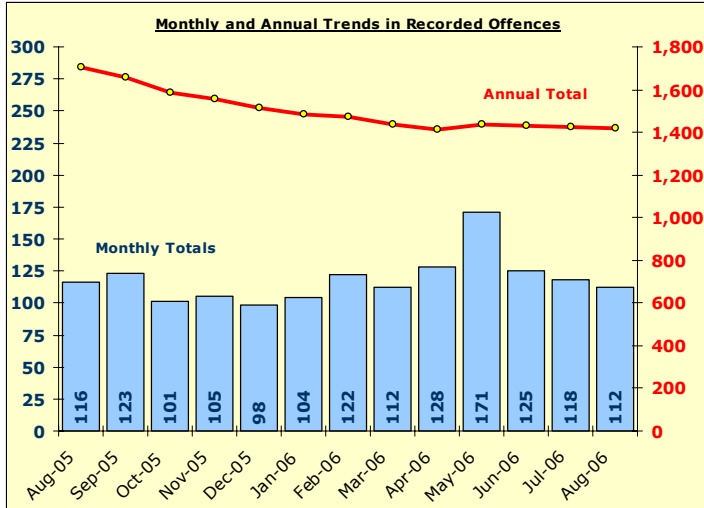


Other Burglary

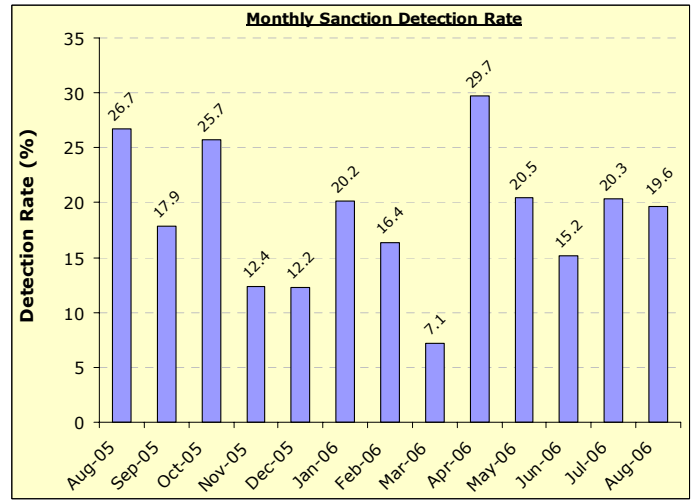
DYFED-POWYS POLICE

TARGET 2006/07 : No Target

Recorded Crime Levels – August 2006

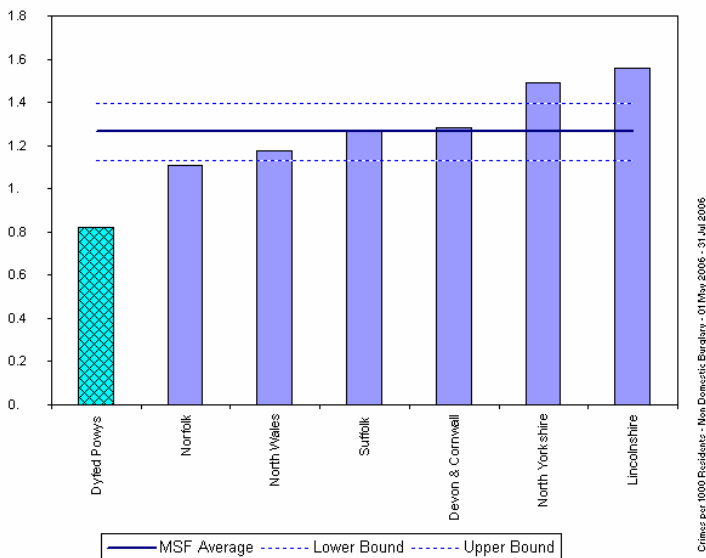


Monthly Sanction Detection Rates – August 2006

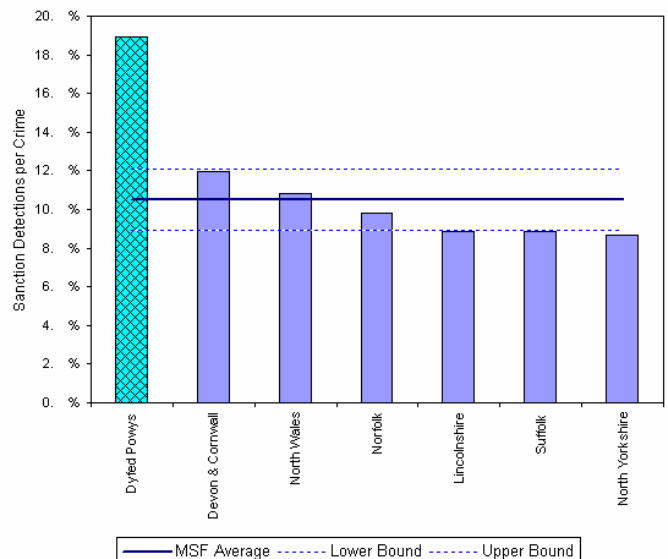


Total Other Burglary	YTD: Aug-06			Detection Rates YTD		Annual Trends SPLY		
	Recorded Offences	Sanction Detections	Total Detections	Sanction Detection Rate	Total Detection Rate	Recorded Offences	Diff in Number	% Change in Offences
THE FORCE	654	138	143	21.1%	21.9%	674	- 20	- 3.0%
Carmarthenshire	296	60	62	20.3%	20.9%	300	- 4	- 1.3%
Ceredigion	74	21	22	28.4%	29.7%	57	+ 17	+ 29.8%
Pembrokeshire	117	36	37	30.8%	31.6%	130	- 13	- 10.0%
Powys	167	21	22	12.6%	13.2%	187	- 20	- 10.7%

MSF – Crimes per 1000 Residents 01 May 2006 – 31 July 2006 (latest quarter)



MSF – Sanction detections (annual): 01 August 2005 – 31 July 2006 (latest)

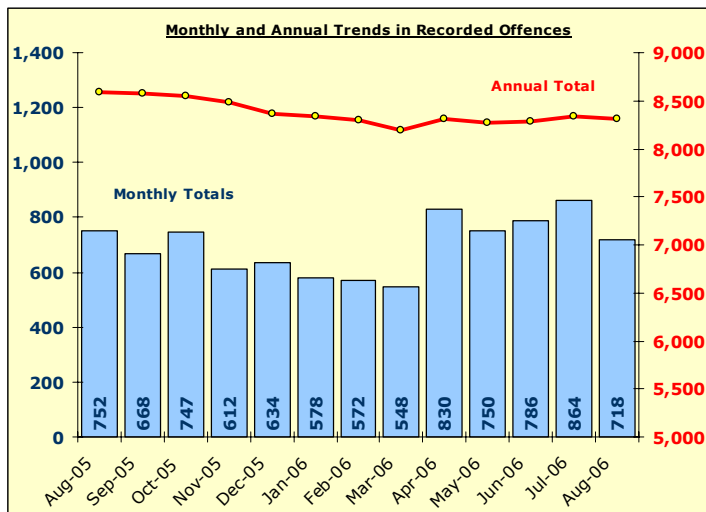


Total Violent Crime

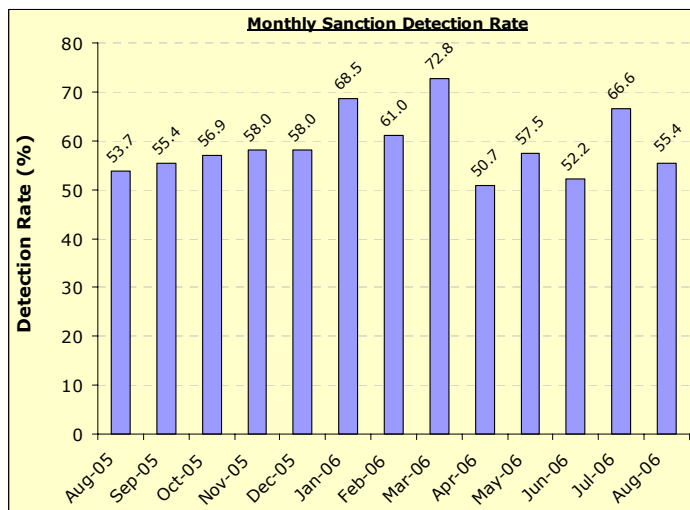
DYFED-POWYS POLICE

TARGET 2006/07 – 3% reduction in offences & 58% sanction detection rate

Recorded Crime Levels – August 2006

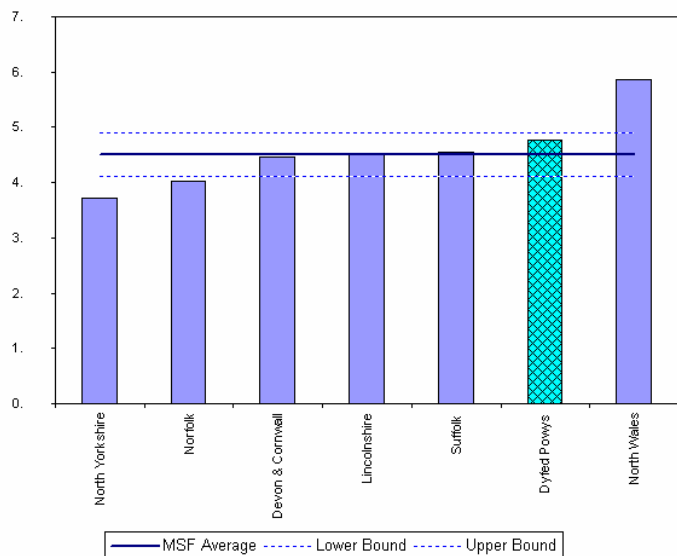


Monthly Sanction Detection Rates – August 2006



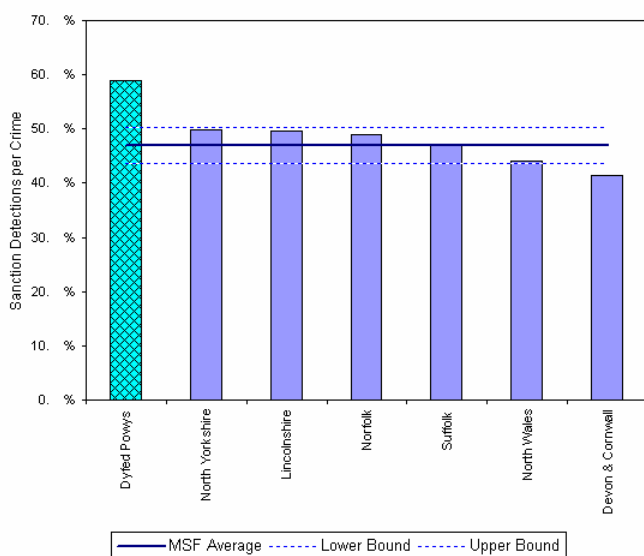
Total Violent Crime	YTD: Aug-06			Detection Rates YTD		Annual Trends SPLY		
	Recorded Offences	Sanction Detections	Total Detections	Sanction Detection Rate	Total Detection Rate	Recorded Offences	Diff in Number	% Change in Offences
THE FORCE	3,948	2,235	2,366	56.6%	59.9%	3,829	+ 119	+ 3.1%
Carmarthenshire	1,405	841	873	59.9%	62.1%	1,306	+ 99	+ 7.6%
Ceredigion	501	251	272	50.1%	54.3%	521	- 20	- 3.8%
Pembrokeshire	1,066	580	625	54.4%	58.6%	905	+ 161	+ 17.8%
Powys	976	563	596	57.7%	61.1%	1,097	- 121	- 11.0%

MSF – Crimes per 1000 Residents 01 May 2006 – 31 July 2006 (latest quarter)



Crimes per 1000 Residents - Violent Crime - 01 May 2006 - 31 Jul 2006

MSF – Sanction detections (annual): 01 August 2005 – 31 July 2006 (latest)



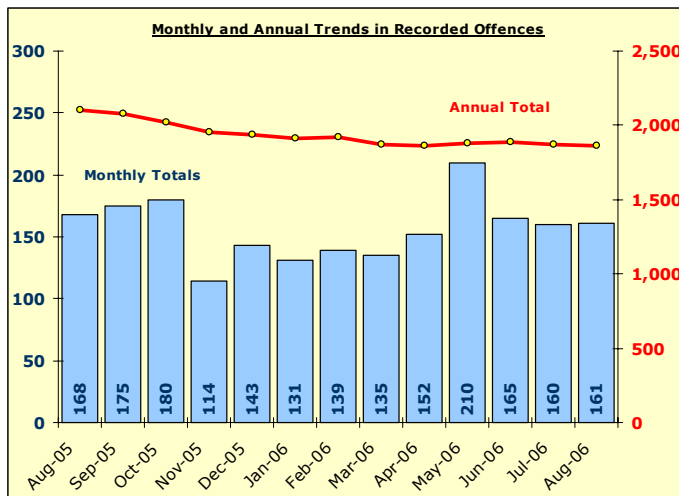
Sanction MSF - Sanction Detections per Crime-Dyfed Powys-Violent Crime-01 Aug 2005 - 31 Jul 2006

Total Vehicle Crime

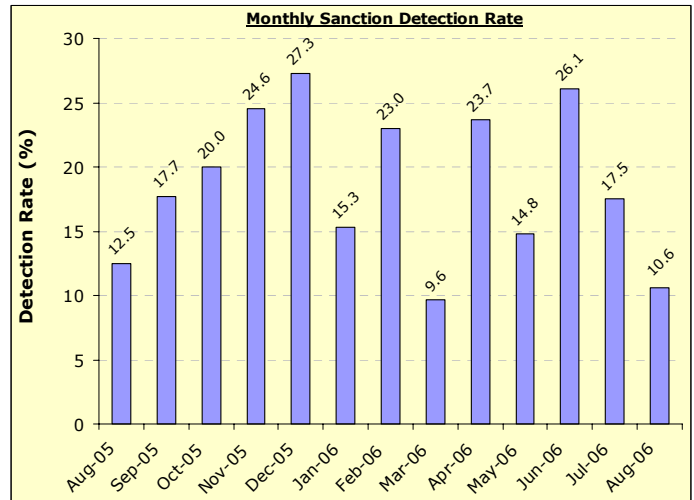
DYFED-POWYS POLICE

TARGET 2006/07 : 2% reduction in offences & 16% sanction detection rate

Recorded Crime Levels – August 2006

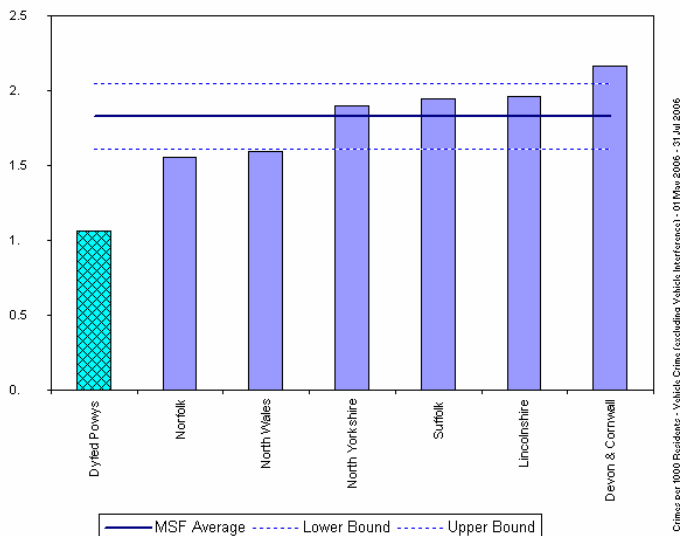


Monthly Sanction Detection Rates – August 2006



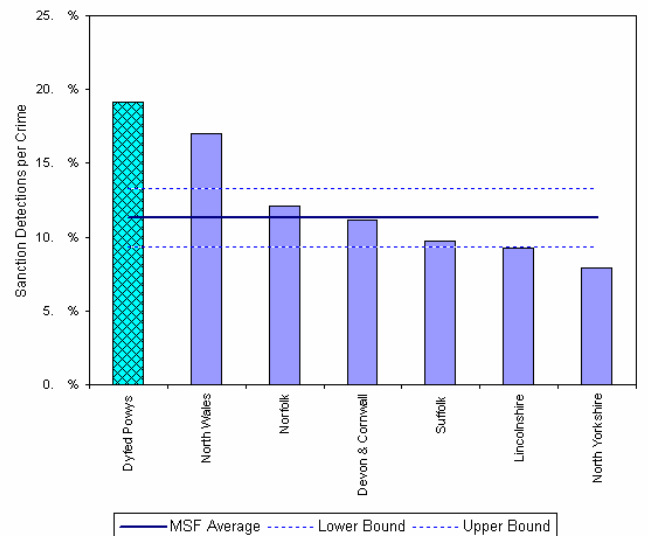
Total Autocrime	YTD: Aug-06			Detection Rates YTD		Annual Trends SPLY		
	Recorded Offences	Sanction Detections	Total Detections	Sanction Detection Rate	Total Detection Rate	Recorded Offences	Diff in Number	% Change in Offences
THE FORCE	848	155	157	18.3%	18.5%	852	- 4	- 0.5%
Carmarthenshire	311	52	52	16.7%	16.7%	356	- 45	- 12.6%
Ceredigion	121	43	45	35.5%	37.2%	92	+ 29	+ 31.5%
Pembrokeshire	210	26	26	12.4%	12.4%	215	- 5	- 2.3%
Powys	206	34	34	16.5%	16.5%	189	+ 17	+ 9.0%

MSF – Crimes per 1000 Residents 01 May 2006 – 31 July 2006 (latest quarter)



Crimes per 1000 Residents - Valid Crimes (excluding Vehicle Interference) - 01 May 2006 - 31 Jul 2006

MSF – Sanction detections (annual): 01 August 2005 – 31 July 2006 (latest)



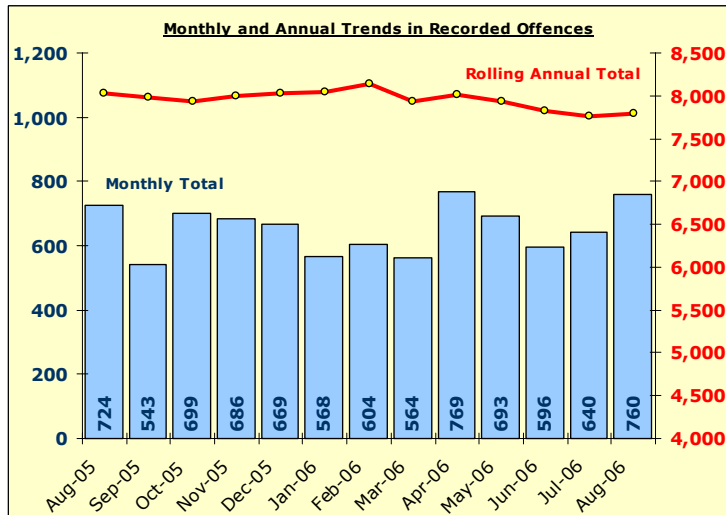
Bar chart MSF - Sanction Detections per Crime - Dyfed Powys - Valid Crimes (excluding Vehicle Interference) 01 Aug 2005 - 31 Jul 2006

Total Criminal Damage

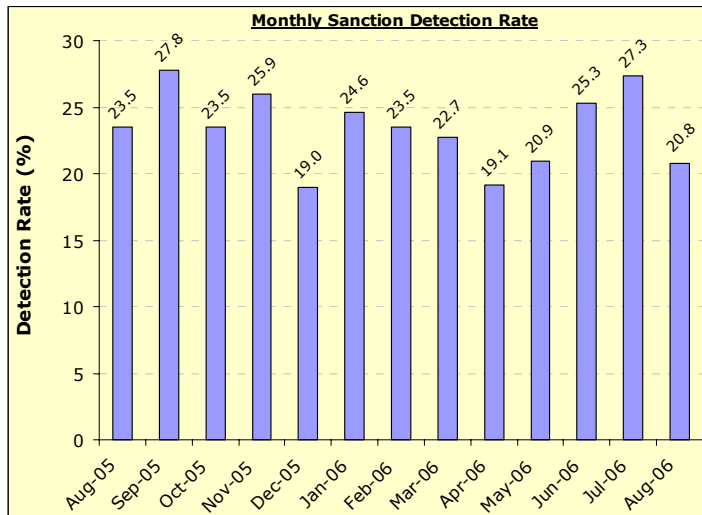
NOW **INCLUDES** ARSON & THREAT TO COMMIT CRIMINAL DAMAGE

TARGET 2005/06 : 3% reduction in offences (Local Policing Domain 2006/07)

Recorded Crime Levels – August 2006

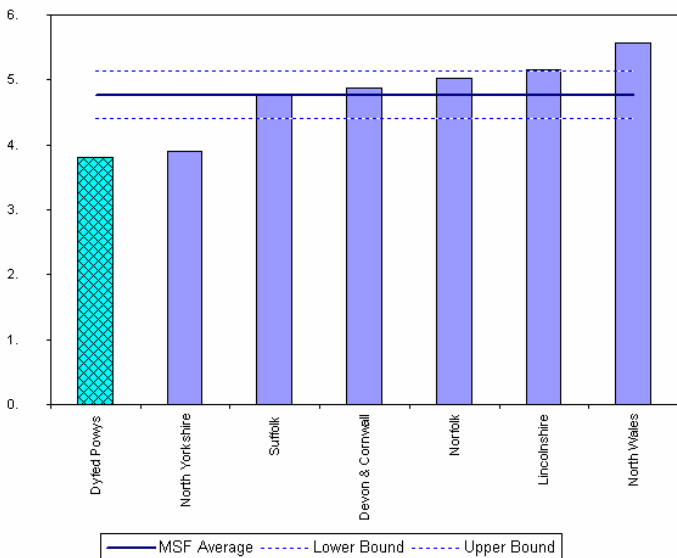


Monthly Sanction Detection Rates – August 2006



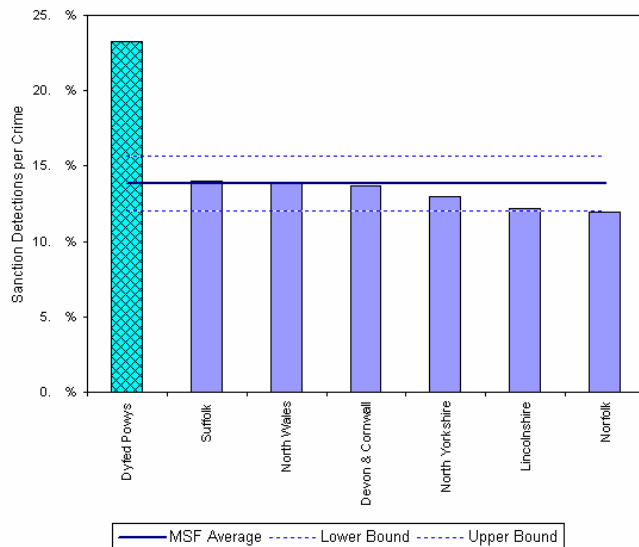
Total Criminal Damage	YTD: Aug-06			Detection Rates YTD		Annual Trends SPLY		
	Recorded Offences	Sanction Detections	Total Detections	Sanction Detection Rate	Total Detection Rate	Recorded Offences	Diff in Number	% Change in Offences
THE FORCE	3,458	776	849	22.4%	24.6%	3,606	- 148	- 4.1%
Carmarthenshire	1,203	268	297	22.3%	24.7%	1,246	- 43	- 3.5%
Ceredigion	432	113	119	26.2%	27.5%	507	- 75	- 14.8%
Pembrokeshire	994	216	237	21.7%	23.8%	1,047	- 53	- 5.1%
Powys	829	179	196	21.6%	23.6%	806	+ 23	+ 2.9%

MSF – Crimes per 1000 Residents 01 May 2006 – 31 July 2006 (latest quarter)



Crimes per 1000 Residents - Criminal Damage (exc 53) - 01 May 2006 - 31 Jul 2006

MSF – Sanction detections (annual): 01 July 2005 – 30 June 2006 (latest)



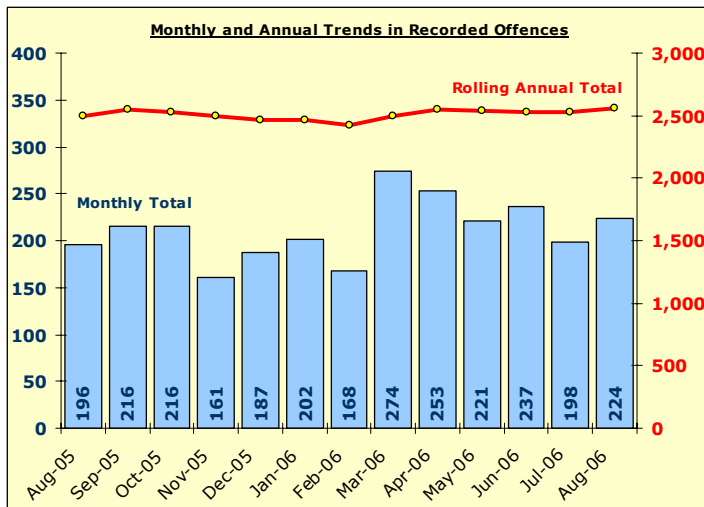
Bar chart MSF - Sanction Detections per Crime-Dyfed Powys-Criminal Damage (exc 53) 01 Aug 2005 - 31 Jul 2006

Total Drug Offences

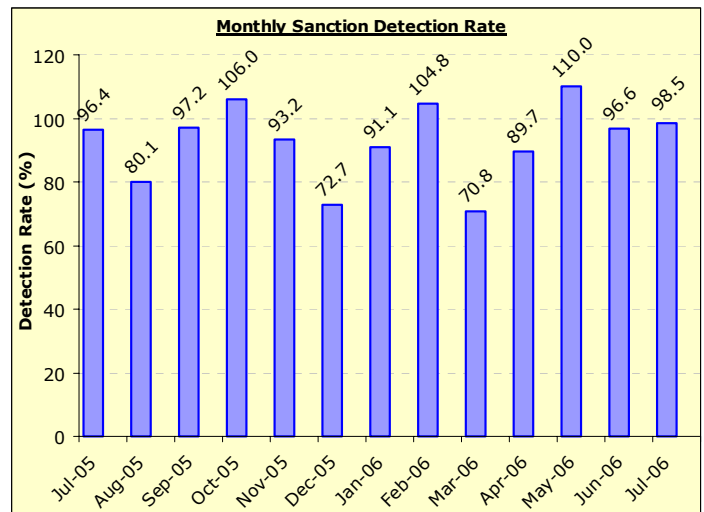
DYFED-POWYS POLICE

TARGET 2005/06 : NO TARGET

Recorded Crime Levels – August 2006

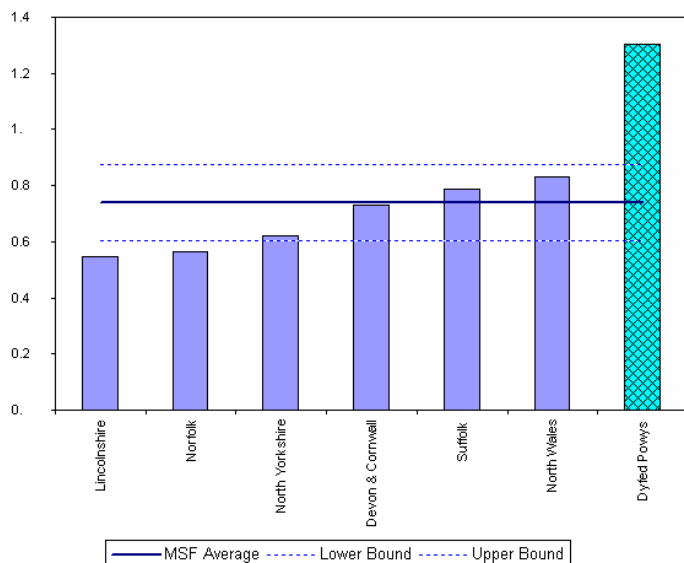


Monthly Sanction Detection Rates – August 2006



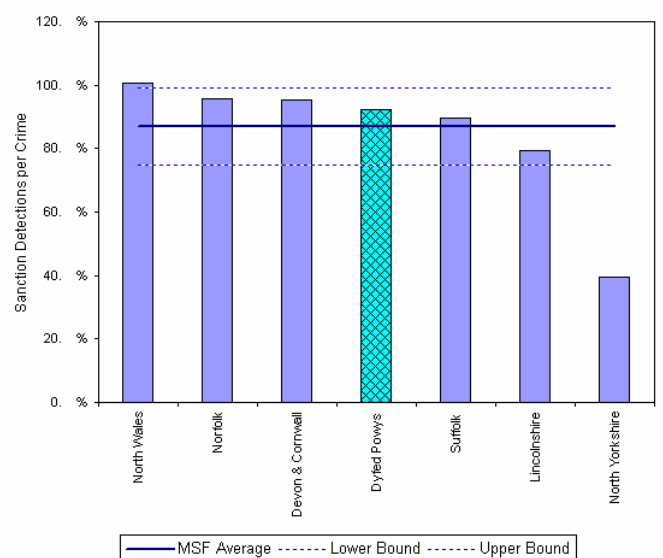
Total Drug Offences	YTD: Aug-06			Detection Rates YTD		Annual Trends SPLY		
	Recorded Offences	Sanction Detections	Total Detections	Sanction Detection Rate	Total Detection Rate	Recorded Offences	Diff in Number	% Change in Offences
THE FORCE	1,133	1,068	1,124	94.3%	99.2%	1,071	+ 62	+ 5.8%
Carmarthenshire	428	437	460	102.1%	107.5%	433	- 5	- 1.2%
Ceredigion	186	179	186	96.2%	100.0%	207	- 21	- 10.1%
Pembrokeshire	190	168	180	88.4%	94.7%	266	- 76	- 28.6%
Powys	329	284	298	86.3%	90.6%	165	+ 164	+ 99.4%

MSF – Crimes per 1000 Residents 01 May 2006 – 31 July 2006 (latest quarter)



Crimes per 1000 Residents - Drug Offences - 01 May 2006 - 31 Jul 2006

MSF – Sanction detections (annual): 01 August 2005 – 31 July 2006 (latest)



BarChart MSF - Sanction Detections per Crime-Dyfed Powys-Drug Offences-01 Aug 2005 - 31 Jul 2006

Section Level Sanction Detection Summary

DYFED-POWYS POLICE

Total Recorded Crime & Domestic Burglary

Total Recorded Crimes: August 2006 YTD

Sanction Detection Rate	Recorded Offences	Sanction Detections	Sanction Detection Rate	SPLY Sanction Detections	SPLY Sanction Det Rate	Diff in Number of S Dets	% Change in No of S Dets.	SPLY Recorded Offences	Diff in Number	% Change in Offences
THE FORCE	13,711	5,558	40.5%	4,933	35.3%	+ 625	+ 12.7%	13,960	- 249	- 1.8%
Carmarthenshire	4,871	2,098	43.1%	1,743	34.8%	+ 355	+ 20.4%	5,004	- 133	- 2.7%
Amman/Towy (AW)	889	384	43.2%	342	39.5%	+ 42	+ 12.3%	865	+ 24	+ 2.8%
Carmarthen Town (AC)	746	331	44.4%	331	42.9%	=	=	771	- 25	- 3.2%
Carmarthen Rural (AY)	422	173	41.0%	158	36.9%	+ 15	+ 9.5%	428	- 6	- 1.4%
Gwendraeth (AT)	743	261	35.1%	286	37.6%	- 25	- 8.7%	761	- 18	- 2.4%
Llanelli Town (AL)	1,408	609	43.3%	480	31.8%	+ 129	+ 26.9%	1,508	- 100	- 6.6%
Llanelli Rural (AZ)	663	308	46.5%	181	27.0%	+ 127	+ 70.2%	671	- 8	- 1.2%
Ceredigion	1,863	795	42.7%	725	36.9%	+ 70	+ 9.7%	1,965	- 102	- 5.2%
Ceredigion North (BA)	1,046	432	41.3%	406	39.5%	+ 26	+ 6.4%	1,029	+ 17	+ 1.7%
Ceredigion South (BS)	817	363	44.4%	319	34.1%	+ 44	+ 13.8%	936	- 119	- 12.7%
Pembrokeshire	3,587	1,338	37.3%	1,224	34.3%	+ 114	+ 9.3%	3,572	+ 15	+ 0.4%
Fishguard (CF)	441	178	40.4%	123	31.7%	+ 55	+ 44.7%	388	+ 53	+ 13.7%
Haverfordwest (CH)	936	410	43.8%	273	32.5%	+ 137	+ 50.2%	840	+ 96	+ 11.4%
Milford Haven (CM)	727	276	38.0%	265	38.6%	+ 11	+ 4.2%	687	+ 40	+ 5.8%
Pembroke Dock (CP)	816	256	31.4%	348	36.6%	- 92	- 26.4%	951	- 135	- 14.2%
Tenby (CT)	667	218	32.7%	215	30.5%	+ 3	+ 1.4%	706	- 39	- 5.5%
Powys	3,390	1,327	39.1%	1,241	36.3%	+ 86	+ 6.9%	3,419	- 29	- 0.8%
Brecon (DB)	928	330	35.6%	291	33.0%	+ 39	+ 13.4%	881	+ 47	+ 5.3%
Llandrindod Wells (DL)	565	215	38.1%	244	39.0%	- 29	- 11.9%	625	- 60	- 9.6%
Newtown (DN)	1,030	428	41.6%	368	34.4%	+ 60	+ 16.3%	1,071	- 41	- 3.8%
Welshpool (DW)	636	278	43.7%	240	41.3%	+ 38	+ 15.8%	581	+ 55	+ 9.5%
Ystradgynlais (DY)	231	76	32.9%	98	37.5%	- 22	- 22.4%	261	- 30	- 11.5%

Total Domestic Burglary : August 2006 YTD

Sanction Detection Rate	Recorded Offences	Sanction Detections	Sanction Detection Rate	Sanction Detections	Sanction Det Rate	Diff in Number of S Dets	% Change in No of S Dets.	Recorded Offences	Diff in Number	% Change in Offences
THE FORCE	339	96	28.3%	90	25.9%	+ 6	+ 6.7%	347	- 8	- 2.3%
Carmarthenshire	123	43	35.0%	35	24.8%	+ 8	+ 22.9%	141	- 18	- 12.8%
Amman/Towy (AW)	24	3	12.5%	10	55.6%	- 7	- 70.0%	18	+ 6	+ 33.3%
Carmarthen Town (AC)	9	2	22.2%	3	30.0%	- 1	- 33.3%	10	- 1	- 10.0%
Carmarthen Rural (AY)	6	1	16.7%	4	40.0%	- 3	- 75.0%	10	- 4	- 40.0%
Gwendraeth (AT)	17	0	0.0%	8	27.6%	- 8	- 100.0%	29	- 12	- 41.4%
Llanelli Town (AL)	43	12	27.9%	7	13.0%	+ 5	+ 71.4%	54	- 11	- 20.4%
Llanelli Rural (AZ)	24	18	75.0%	2	10.0%	+ 16	+ 800.0%	20	+ 4	+ 20.0%
Ceredigion	43	11	25.6%	7	20.0%	+ 4	+ 57.1%	35	+ 8	+ 22.9%
Ceredigion North (BA)	26	7	26.9%	5	21.7%	+ 2	+ 40.0%	23	+ 3	+ 13.0%
Ceredigion South (BS)	17	4	23.5%	2	16.7%	+ 2	+ 100.0%	12	+ 5	+ 41.7%
Pembrokeshire	94	21	22.3%	25	28.4%	- 4	- 16.0%	88	+ 6	+ 6.8%
Fishguard (CF)	8	3	37.5%	3	33.3%	=	=	9	- 1	- 11.1%
Haverfordwest (CH)	30	12	40.0%	6	20.7%	+ 6	+ 100.0%	29	+ 1	+ 3.4%
Milford Haven (CM)	22	3	13.6%	8	40.0%	- 5	- 62.5%	20	+ 2	+ 10.0%
Pembroke Dock (CP)	23	2	8.7%	4	22.2%	- 2	- 50.0%	18	+ 5	+ 27.8%
Tenby (CT)	11	1	9.1%	4	33.3%	- 3	- 75.0%	12	- 1	- 8.3%
Powys	79	21	26.6%	23	27.7%	- 2	- 8.7%	83	- 4	- 4.8%
Brecon (DB)	21	8	38.1%	2	16.7%	+ 6	+ 300.0%	12	+ 9	+ 75.0%
Llandrindod Wells (DL)	16	4	25.0%	8	40.0%	- 4	- 50.0%	20	- 4	- 20.0%
Newtown (DN)	17	4	23.5%	10	28.6%	- 6	- 60.0%	35	- 18	- 51.4%
Welshpool (DW)	15	4	26.7%	3	23.1%	+ 1	+ 33.3%	13	+ 2	+ 15.4%
Ystradgynlais (DY)	10	1	10.0%	0	No Calc	+ 1	-	3	+ 7	+ 233.3%

Section Level Sanction Detection Summary

DYFED-POWYS POLICE

Total Violent Crime and Total Vehicle Crime

Total Violent Recorded Crimes: August 2006 YTD

Sanction Detection Rate	Recorded Offences	Sanction Detections	Sanction Detection Rate	SPLY Sanction Detections	SPLY Sanction Det Rate	Diff in Number of S Dets	% Change in No of S Dets.	SPLY Recorded Offences	Diff in Number	% Change in Offences
THE FORCE	3,948	2,235	56.6%	1,809	47.2%	+ 426	+ 23.5%	3,829	+ 119	+ 3.1%
Carmarthenshire	1,405	841	59.9%	592	45.3%	+ 249	+ 42.1%	1,306	+ 99	+ 7.6%
Amman/Towy (AW)	213	121	56.8%	75	44.1%	+ 46	+ 61.3%	170	+ 43	+ 25.3%
Carmarthen Town (AC)	240	143	59.6%	137	54.2%	+ 6	+ 4.4%	253	- 13	- 5.1%
Carmarthen Rural (AY)	122	63	51.6%	48	51.1%	+ 15	+ 31.3%	94	+ 28	+ 29.8%
Gwendraeth (AT)	209	90	43.1%	57	29.1%	+ 33	+ 57.9%	196	+ 13	+ 6.6%
Llanelli Town (AL)	451	280	62.1%	166	40.9%	+ 114	+ 68.7%	406	+ 45	+ 11.1%
Llanelli Rural (AZ)	170	110	64.7%	71	38.0%	+ 39	+ 54.9%	187	- 17	- 9.1%
Ceredigion	501	251	50.1%	253	48.6%	- 2	- 0.8%	521	- 20	- 3.8%
Ceredigion North (BA)	276	137	49.6%	156	54.9%	- 19	- 12.2%	284	- 8	- 2.8%
Ceredigion South (BS)	225	114	50.7%	97	40.9%	+ 17	+ 17.5%	237	- 12	- 5.1%
Pembrokeshire	1,066	580	54.4%	421	46.5%	+ 159	+ 37.8%	905	+ 161	+ 17.8%
Fishguard (CF)	129	72	55.8%	40	41.7%	+ 32	+ 80.0%	96	+ 33	+ 34.4%
Haverfordwest (CH)	296	156	52.7%	103	40.4%	+ 53	+ 51.5%	255	+ 41	+ 16.1%
Milford Haven (CM)	210	127	60.5%	97	48.3%	+ 30	+ 30.9%	201	+ 9	+ 4.5%
Pembroke Dock (CP)	268	137	51.1%	91	44.8%	+ 46	+ 50.5%	203	+ 65	+ 32.0%
Tenby (CT)	163	88	54.0%	90	60.0%	- 2	- 2.2%	150	+ 13	+ 8.7%
Powys	976	563	57.7%	543	49.5%	+ 20	+ 3.7%	1,097	- 121	- 11.0%
Brecon (DB)	242	142	58.7%	140	53.4%	+ 2	+ 1.4%	262	- 20	- 7.6%
Llandrindod Wells (DL)	154	90	58.4%	117	55.5%	- 27	- 23.1%	211	- 57	- 27.0%
Newtown (DN)	369	204	55.3%	153	41.2%	+ 51	+ 33.3%	371	- 2	- 0.5%
Welshpool (DW)	156	98	62.8%	97	56.7%	+ 1	+ 1.0%	171	- 15	- 8.8%
Ystradgynlais (DY)	55	29	52.7%	36	43.9%	- 7	- 19.4%	82	- 27	- 32.9%

Total Vehicle Crimes: August 2006 YTD

Sanction Detection Rate	Recorded Offences	Sanction Detections	Sanction Detection Rate	Sanction Detections	Sanction Det Rate	Diff in Number of S Dets	% Change in No of S Dets.	Recorded Offences	Diff in Number	% Change in Offences
THE FORCE	848	155	18.3%	110	12.9%	+ 45	+ 40.9%	852	- 4	- 0.5%
Carmarthenshire	311	52	16.7%	36	10.1%	+ 16	+ 44.4%	356	- 45	- 12.6%
Amman/Towy (AW)	62	8	12.9%	8	15.4%	=	=	52	+ 10	+ 19.2%
Carmarthen Town (AC)	32	2	6.3%	2	6.3%	=	=	32	=	-
Carmarthen Rural (AY)	30	4	13.3%	3	11.5%	+ 1	+ 33.3%	26	+ 4	+ 15.4%
Gwendraeth (AT)	62	4	6.5%	7	11.1%	- 3	- 42.9%	63	- 1	- 1.6%
Llanelli Town (AL)	71	14	19.7%	8	6.5%	+ 6	+ 75.0%	124	- 53	- 42.7%
Llanelli Rural (AZ)	54	10	18.5%	6	10.2%	+ 4	+ 66.7%	59	- 5	- 8.5%
Ceredigion	121	43	35.5%	18	19.6%	+ 25	+ 138.9%	92	+ 29	+ 31.5%
Ceredigion North (BA)	45	4	8.9%	7	16.3%	- 3	- 42.9%	43	+ 2	+ 4.7%
Ceredigion South (BS)	76	39	51.3%	11	22.4%	+ 28	+ 254.5%	49	+ 27	+ 55.1%
Pembrokeshire	210	26	12.4%	29	13.5%	- 3	- 10.3%	215	- 5	- 2.3%
Fishguard (CF)	27	3	11.1%	2	6.7%	+ 1	+ 50.0%	30	- 3	- 10.0%
Haverfordwest (CH)	36	5	13.9%	3	10.7%	+ 2	+ 66.7%	28	+ 8	+ 28.6%
Milford Haven (CM)	40	2	5.0%	7	22.6%	- 5	- 71.4%	31	+ 9	+ 29.0%
Pembroke Dock (CP)	53	5	9.4%	5	9.4%	=	=	53	=	-
Tenby (CT)	54	11	20.4%	12	16.4%	- 1	- 8.3%	73	- 19	- 26.0%
Powys	206	34	16.5%	27	14.3%	+ 7	+ 25.9%	189	+ 17	+ 9.0%
Brecon (DB)	49	6	12.2%	2	3.4%	+ 4	+ 200.0%	58	- 9	- 15.5%
Llandrindod Wells (DL)	34	8	23.5%	4	13.8%	+ 4	+ 100.0%	29	+ 5	+ 17.2%
Newtown (DN)	60	14	23.3%	8	16.7%	+ 6	+ 75.0%	48	+ 12	+ 25.0%
Welshpool (DW)	30	3	10.0%	9	27.3%	- 6	- 66.7%	33	- 3	- 9.1%
Ystradgynlais (DY)	33	3	9.1%	4	19.0%	- 1	- 25.0%	21	+ 12	+ 57.1%

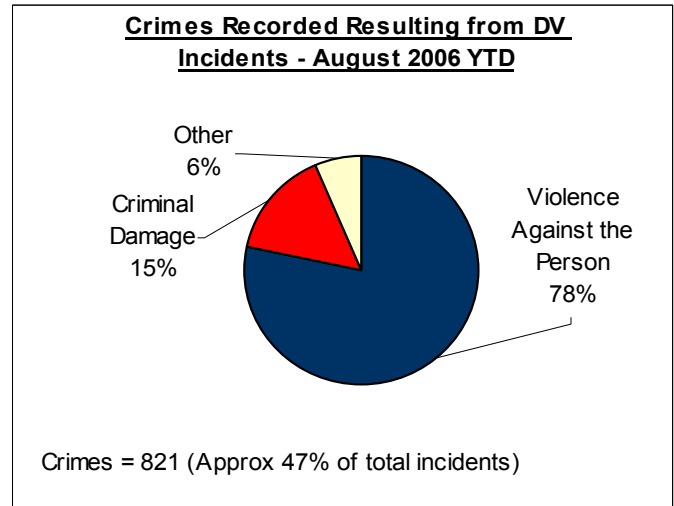
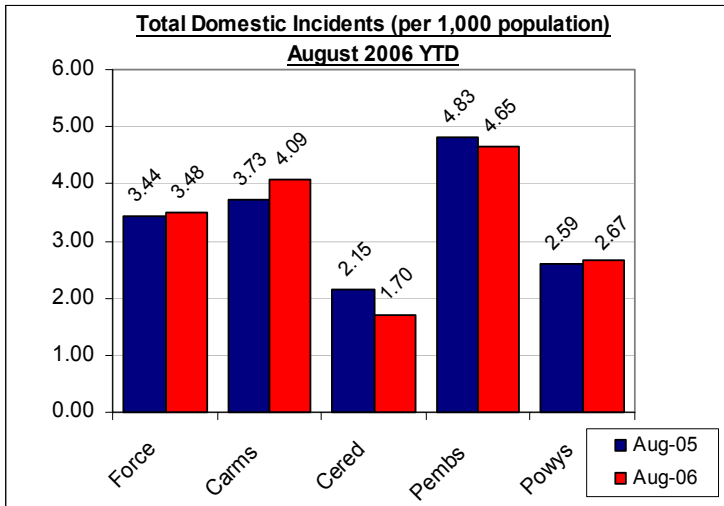
Domestic Incidents

DYFED POWYS POLICE

SPI 8A TARGET -38% OF INCIDENTS WITH AN ARREST MADE

LOCAL TARGET – 25 % OF TOTAL INCIDENTS INVOLVING REPEAT VICTIMS

Please note figures provided here are reliant on force systems being updated and remain **provisional only**. For the latest detailed information please contact your local Public Protection Unit (PPU) for further details.



Section & Divisional Summary – August 2006 YTD

Section	Incidents Total Incidents	Total Arrest Rate		Crimes & Sanction Detections			Repeat Victims % Repeats (12mths data)**	Aug 2005 (SPLY)	
		Arrests	Total Arrest Rate	Crimes	% Sanction Detection Rate	Arrest Rate for Crimes		Total Incidents	Annual % Change
Ammanford/Towy (AW)	132	56	42.4%	62	45.2%	69.4%	18.8%	97	36.1%
Carmarthen (AC)	89	39	43.8%	41	48.8%	73.2%	17.6%	84	6.0%
Carmarthen Rural (AY)	65	23	35.4%	25	52.0%	72.0%	13.0%	51	27.5%
Gwendraeth (AT)	143	61	42.7%	59	67.8%	79.7%	18.7%	129	10.9%
Llanelli (AL)	162	71	43.8%	88	48.9%	65.9%	23.4%	179	-9.5%
Llanelli Rural (AZ)	135	58	43.0%	52	48.1%	75.0%	22.6%	123	9.8%
Carmarthenshire	726	308	42.4%	327	51.7%	71.9%	19.9%	663	9.5%
Ceredigion North (BN)	66	37	56.1%	36	44.4%	86.1%	14.2%	99	-33.3%
Ceredigion South (BS)	67	35	52.2%	35	42.9%	74.3%	16.2%	69	-2.9%
Ceredigion	133	72	54.1%	71	43.7%	80.3%	15.1%	168	-20.8%
Fishguard (CF)	69	41	59.4%	38	47.4%	84.2%	25.3%	76	-9.2%
Haverfordwest (CH)	102	49	48.0%	53	45.3%	62.3%	26.4%	129	-20.9%
Milford Haven (CM)	133	57	42.9%	61	62.3%	78.7%	25.3%	141	-5.7%
Pembroke Dock (CP)	163	76	46.6%	64	51.6%	79.7%	30.0%	135	20.7%
Tenby (CT)	79	27	34.2%	32	37.5%	65.6%	13.9%	85	-7.1%
Pembrokeshire	546	250	45.8%	248	50.4%	74.6%	25.6%	566	-3.5%
Brecon (DB)	66	32	48.5%	34	61.8%	79.4%	15.2%	68	-2.9%
Llandrindod Wells (DL)	67	28	41.8%	33	42.4%	75.8%	20.7%	58	15.5%
Newtown (DN)	135	73	54.1%	68	44.1%	89.7%	26.6%	111	21.6%
Welshpool (DW)	42	18	42.9%	20	65.0%	75.0%	19.1%	56	-25.0%
Ystradgynlais (DY)	39	18	46.2%	20	65.0%	85.0%	12.8%	45	-13.3%
Powys	349	169	48.4%	175	52.0%	82.9%	20.5%	338	3.3%
Force	1754	799	45.6%	821	50.7%	75.8%	21.4%	1735	1.1%

Source: LCS Recorded Domestic Incident Details (all data extracted 04/09/06).

** Repeat Victims performance is based on 12-months total incident data and not fiscal year-to-date and includes **all victims** – not only those involving both the same victim **and** offender.

The introduction of the Serious Organised Crime and Police Act 2005 (SOCPA) on 01/01/06 has resulted in the withdrawal of the term 'power of arrest'. As a consequence of this it has ceased to be a discrete performance measure.

User Satisfaction

CITIZEN FOCUS PERFORMANCE ASSESSMENT DOMAIN

MARCH 2006 DATA – LATEST

These measures constitute the citizen focus domain in the police performance assessment framework. All victims of crimes (domestic burglary, violent crime and vehicle crime only) or those involved in road traffic collisions are surveyed within a short period of coming into contact with the force to gain their views on the service they received.

For performance assessment purposes, these measurements of user satisfaction are grouped into five main theme:

- SPI 1a – Satisfaction with making contact with the police: 'Ease of Contact' **(2005/06 TARGET 92%)**
- SPI 1b – Satisfaction with the action taken by the police: 'Actions' **(2005/06 TARGET 84%)**
- SPI 1c – Satisfaction with being kept informed of progress: 'Follow-Up' **(2005/06 TARGET 70%)**
- SPI 1d – Satisfaction with their treatment by staff: 'Treatment' **(2005/06 TARGET 92%)**
- SPI 1e – Satisfaction with the overall service provided: 'Whole Experience' **(2005/06 TARGET 85%)**

Force User Satisfaction – Year Ending March 2006

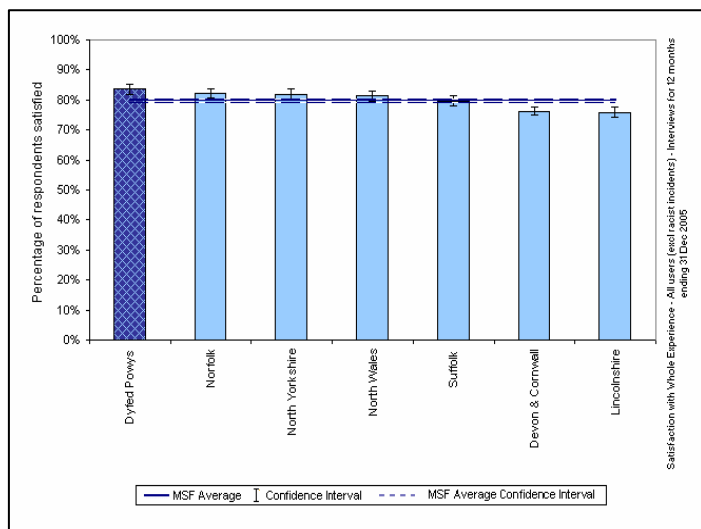
Comparative User Satisfaction 2005/06

Those persons completely, very or fairly satisfied.

Satisfaction with...	DPP Force	MSF Average	Difference
Ease of Contact	91.4%	89.6%	+1.8%
Actions	82.5%	77.3%	+5.2%
Follow-up	70.3%	63.2%	+7.1%
Treatment	91.1%	89.9%	+1.2%
Whole experience	83.6%	79.8%	+3.8%

Source: Home Office / Iquanta, June 2006

MSF – Comparative Force Performance - Whole Experience



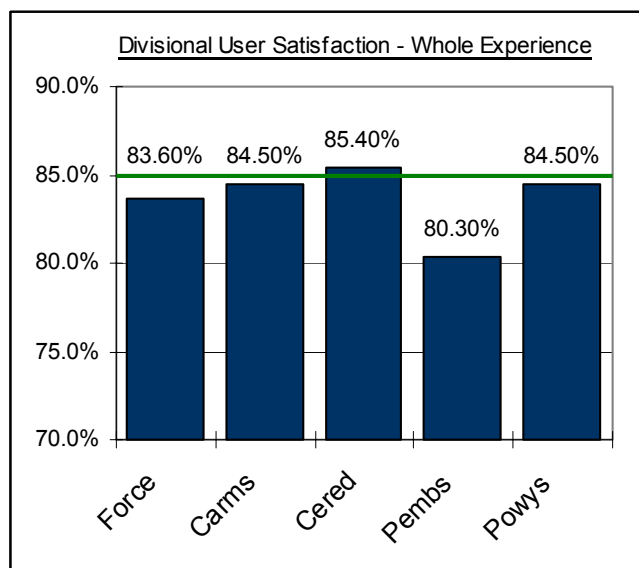
Source: Home Office / Iquanta, April 2006

Divisional User Satisfaction – Year Ending March 2006 (Apr 05 – Mar 06)

BCU user Satisfaction Summary 2005/06

Year Ending March 2006	% Satisfied (Very, Completely and Fairly Satisfied)					Target
	Force	Carms	Cered	Pembs	Powys	
Ease of Contact	91.4%	91.1%	93.9%	91.3%	91.9%	92%
Actions	82.5%	83.5%	84.0%	78.9%	83.6%	84%
Follow-up	70.3%	70.8%	73.1%	66.2%	70.8%	70%
Treatment	91.1%	90.3%	94.5%	88.3%	91.7%	92%
Whole experience	83.6%	84.3%	85.8%	79.2%	84.7%	85%

Source: Home Office / Iquanta, June 2006



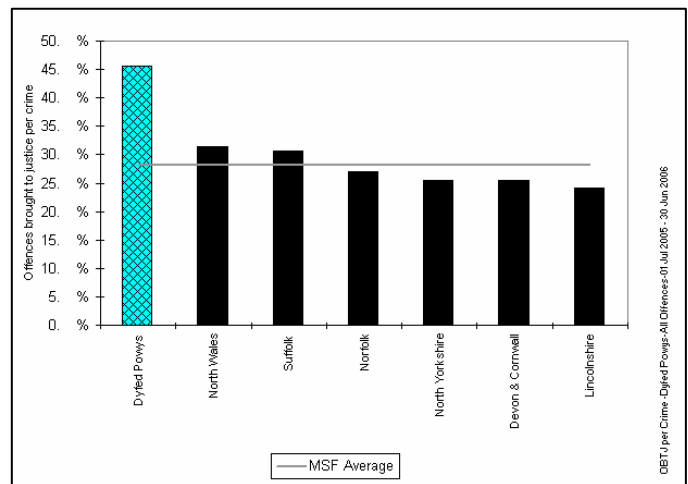
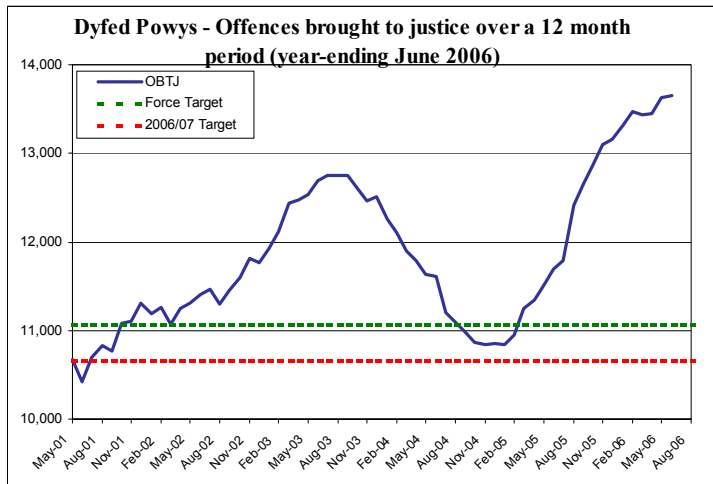
Additional comparative data is available on a quarterly basis. For further information on this or Iquanta contact Corporate Services (ext 6654).

Narrowing the Justice Gap - OFFENCES BROUGHT TO JUSTICE & SANCTION DETECTIONS

TARGET 2006/07 : Force Target - 11,068 / Home Office objective - 10,655 total OBJT (Offences Brought to Justice)

Total Offences Brought to Justice (OBJT) – Force & MSF Comparisons

OBJT – 12 monthly data	TIC	PND	F. Warnings	Cautions	Convictions	OBJT
Baseline: Apr 01 – Mar 02	420	-	-	3,698	6,900	11,068
Latest Annual Data : July 05 – June 06	383	875	1,244	4,939	6,210	13,651
Change	-9%	-	-	+34%	-10%	+23%
2005/06 Force Target (0%- 11,068 OBJT)	NO	n/a	YES	YES	NO	YES



OBJT By Offence Type : Latest Local Criminal Justice Board Comparator Tool – Year Ending April 2006. (MSA = Most Similar Area)

Comparison of LCJB performance against MSA group by crime type (based on LCJB crime mix)						
Dyfed-Powys	Apr-06					
Comparison with MSA	Convictions	Cautions	TICs	PNDs	FW	OBJTs
Dyfed-Powys	21%	82%	-4%	-3%	26%	33%
Burglary	97 (79%)	76 (187%)	12			185 (75%)
Criminal Damage	283 (53%)	460 (114%)	73	28		844 (76%)
Drug Offences	-110 (-11%)	283 (57%)	-6		247	415 (17%)
Fraud and Forgery	131 (44%)	133 (219%)	-11			253 (53%)
Other Offences	139 (42%)	93 (178%)	-3			229 (59%)
Robbery	18 (147%)	2 (369%)	0			21 (154%)
Sexual Offences	9 (7%)	18 (149%)	-44			-18 (-10%)
Shop Lifting	74 (16%)	173 (62%)	-3	-48		196 (20%)
Theft and Handling	377 (95%)	287 (157%)	-36			627 (90%)
VAP	57 (3%)	563 (54%)	0	-6		613 (18%)
Total	1,076	2,089	-19	-27	247	3,365

Key	
High rate	LCJB higher than MSA by greater than 10%
Middle rate	Difference between LCJB & MSA between -10% and 10%
Low rate	LCJB lower than MSA by more than 10%

Cell values indicate (as a proportion) the difference between the number of disposals that the LCJB achieves against what its MSA group would expect to achieve on the same crime mix and number of crimes. A positive value indicates the LCJB is obtaining more disposals of this type than expected when compared with their MSA group.

Sanction Detection Volume Performance YTD – Current Clear-Up Breakdown (Annual % Change)

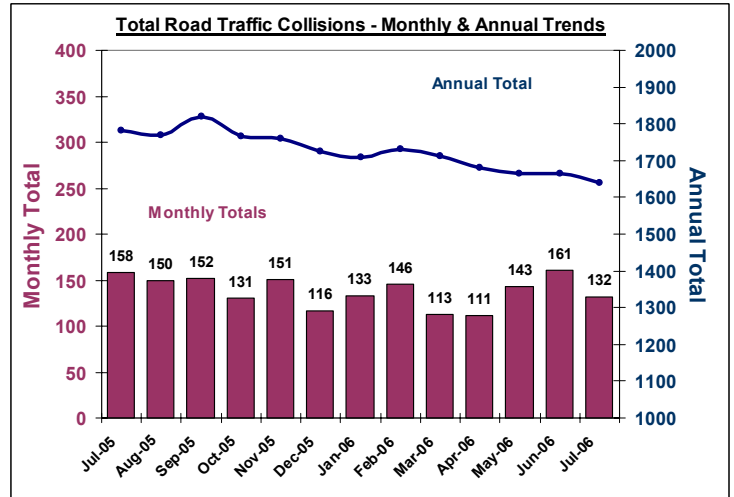
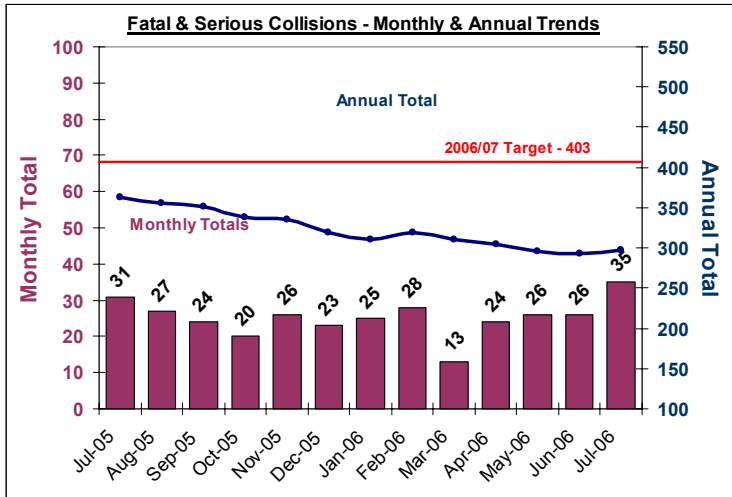
Area – August YTD	Charged	Summons	Cautioned	TIC	PND	F. Warning for Cannabis	Total Sanction Dets
Carmarthenshire	896 (+6%)	22 (+10%)	758 (+42%)	70 (+52%)	127 (+11%)	227 (+23%)	2099 (+20%)
Ceredigion	367 (+3%)	8 (-60%)	334 (+27%)	7 (-46%)	42 (14 SPLY)	40 (-30%)	798 (+10%)
Pembrokeshire	537 (+6%)	11 (-45%)	630 (+37%)	19 (100 SPLY)	98 (+32%)	44 (-31%)	1338 (+9%)
Powys	510 (-15%)	19 (-67%)	522 (+13%)	8 (-85%)	128 (+20%)	140 (39 SPLY)	1327 (+7%)
Force	2310 (-0.1%)	60 (-48%)	2244 (+37%)	104 (-51%)	395 (+28%)	451 (+31%)	5562 (+13%)

Road Traffic Collisions

May Monthly Data Latest available

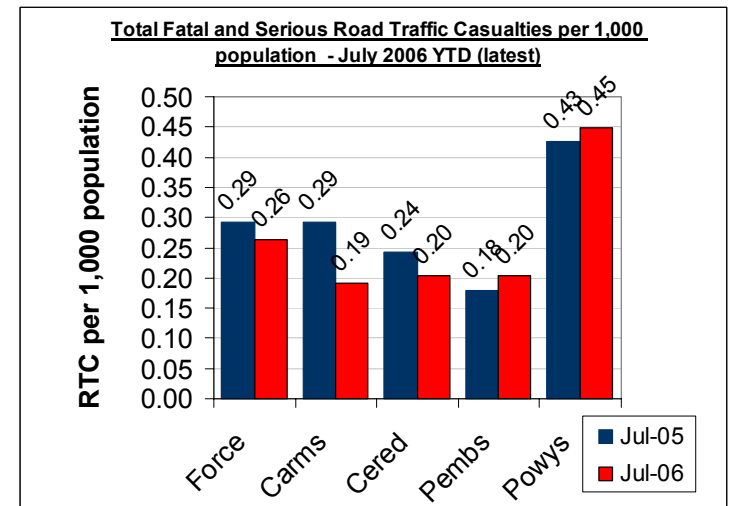
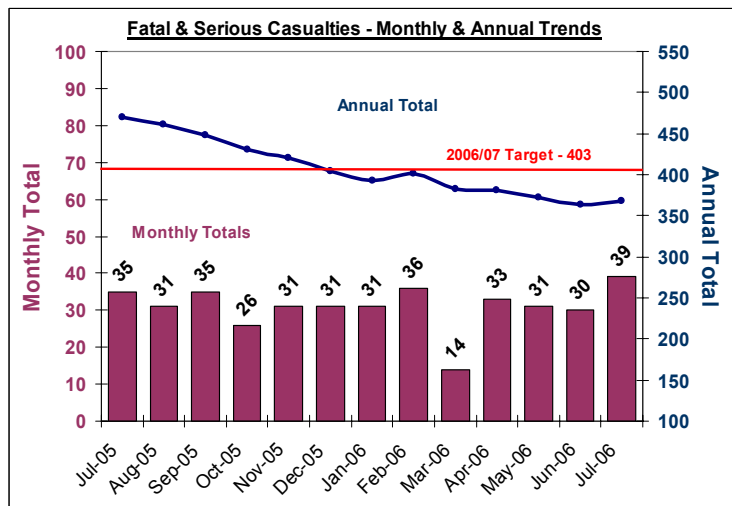
TARGET 2006/07: 403 FATAL AND SERIOUS COLLISIONS & CASUALTIES (0.8 PER 1,000 POPULATION)

COLLISIONS : Road Traffic Collisions – Monthly & Annual Trends (Jul 06 – latest)



Performance YTD (July 2006 YTD - latest)	FORCE	Carms	Cered	Pembs	Powys
Fatal Road Collisions YTD	18	6	0	1	11
Serious & Fatal Road Collisions YTD	111	29	15	21	46
Indicator - Per 1,000 population	0.22	0.16	0.19	0.18	0.35
On-Target (0.8 end of year – 0.27 pro rata)	YES	YES	YES	YES	NO
Fatal (SPLY)	15	6	2	2	5
Serious & Fatal (SPLY)	125	41	18	17	49

CASUALTIES: Road Traffic Casualties – 2010 Target Progress



July 2006 YTD (latest)	Force	Carms	Cered	Pembs	Powys
Number of people killed or seriously injured casualties	148	52	19	21	56
At 2010 Target Level*	YES	YES	YES	YES	YES
Number of Children (<=15 yrs) killed or seriously injured	8	4	2	0	2
At 2010 Target Level*	YES	YES	YES	YES	YES
Number of persons with slight injuries	688	245	84	166	193
At 2010 Target Level*	YES	YES	YES	YES	YES

* 2010 Targets Established with Roads Policing Strategy, Operations Dept & National Road Policing Targets. Progress towards Pro-Rata year-end 2010 target illustrated here

Source: MAAP RTC Database 08/09/06

Road Policing Performance

SELECTED MEASURES OF ROADS POLICING ACTIVITY 2006/07

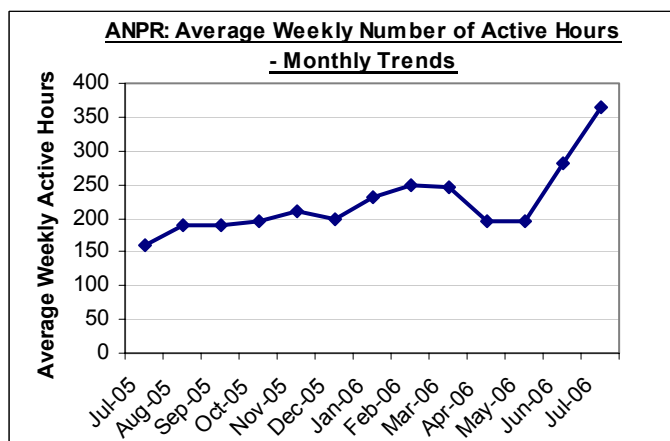
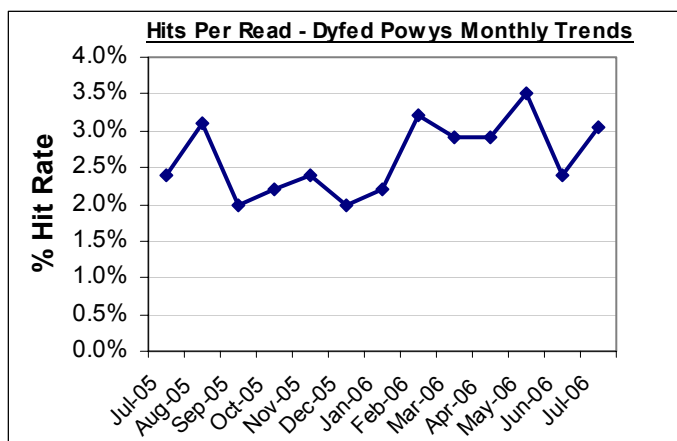
These measures constitute a range of selected measures to illustrate performance with respect to roads policing. The measures are:

- BCU Breakdown of ANPR Performance
- Project Laser – Most Similar Forces Comparisons for ANPR
- S.59 Seizure of Vehicles Used in an Anti-Social Manner

BCU Breakdown of ANPR Performance (latest July 2006)

Covering the period: 01/04/2006 – 31/07/2006	Force	Carms	Cered	Pembs*	Powys	Ports/Other
ANPR Reads	468344	63509	38779	78661	248098	39297
ANPR Hits	13747	1250	1089	2152	9145	111
Arrests	125	5	9	11	100	-
Total No. Operational Hours	4150	334	408.9	464.5	2096.3	846.5
% Hits from Reads	2.9%	2.0%	2.8%	2.7%	3.7%	0.3%
Hits per Operational Hour	3.3	3.7	2.7	4.6	4.4	0.1

* - June Data latest available for Pembs



Vehicle Seizures / Recovered (Apr-Aug 2006)

Reason for Seizure/Recovery	Number	%
Road Traffic Collision	857	63.67
No Insurance/Licence (sect 165)	211	15.68
Obstruction/Danger	74	5.50
Stolen/Abandoned	72	5.35
Used In Crime	69	5.13
Abandoned	28	2.08
Owner Request	10	0.74
Prisoners Vehicle	10	0.74
Other Reason	15	1.11
Total	1346	

Source: VMU September 2006

S.59 Seizure of Vehicles Used in an Anti-Social Manner

April 2006 – July 2006	Number of Incidents YTD				
Vehicles ...	Force	Carms	Cered	Pembs	Powys
Seized (+ SPLY)	2(1)	0 (0)	0 (0)	2 (0)	0 (1)
Warned (+ SPLY)	15 (14)	2 (0)	0 (7)	11 (5)	2 (2)

Source: STORM Command & Control 08 September 2006

Local Policing Domain – Force Summary

2006/07: LOCAL POLICING DOMAIN – LOCAL PRIORITIES AND TARGETS

These priorities constitute a range of selected priorities to illustrate performance within the Local Policing Domain for 2006/07. These are:

- Terrorism and Domestic Extremism:** Objective – To support the wider national endeavour in protecting the country from terrorism and domestic extremism.
- Class A Drugs :** Objective – To proactively target and disrupt Class A drug supply and distribution networks across and beyond the Force area
- Violent Crime :** Objective - To reduce levels of violent crime and seek to increase detection rates in this area.
- Anti-Social Behaviour :** Objective - To proactively tackle anti-social behaviour in conjunction with partners, providing greater reassurance to the public.

Measure	Targets	FORCE	CARMS	CERED	PEMBS	POWYS	
Terrorism & Domestic Extremism							
<i>National Theme - not appropriate to set local measures</i>							
Class-A Drugs							
Number of Class-A drug offenders charged with trafficking	To increase the numbers of offenders charged by 10%	Apr-Aug 2006	53	21	11	17	4
		Apr-Aug 2005	27	11	6	5	5
		Difference	+26	+10	+5	+12	-1
		% Change	96.3%	90.9%	83.3%	240.0%	-20.0%
Number of Class-A drug offences resulting in an offence brought to justice	To increase the numbers brought to justice by 10%	Jun 04 - May 2005	247	Data Not Available below Force Level at Present			
		Jun 05 - May 2006	231				
		Difference	-16				
		% Change	-6.5%				
Violent Crime							
Number of incidents involving victims of domestic violence who have been a victim in more than one incident in the previous 12-months (same offender involved)	To reduce the number of repeat incidents by 7%		FORCE	CARMS	CERED	PEMBS	POWYS
		Sep 05-Aug 06	778	280	51	292	155
		Apr 05-Mar 06	856	283	65	345	163
		Difference	-78	-3	-14	-53	-8
	% Change	-9.1%	-1.1%	-21.5%	-15.4%	-4.9%	
The Proportion of violent crime offences resulting in a sanction detection	To attain a detection rate of 58% (sanction detections)						
		Sanction Detection Rate	56.6%	59.9%	50.1%	54.4%	57.7%
Anti-Social Behaviour							
The number of Anti-Social Behaviour incidents reported to the police	To reduce the number of recorded incidents by 5%		FORCE	CARMS	CERED	PEMBS	POWYS
		Apr-Aug 2006	12336	4381	1456	3577	2817
		Apr-Aug 2005	11826	4410	1588	3272	2471
		Difference	510	-29	-132	305	346
	% Change	4.3%	-0.7%	-8.3%	9.3%	14.0%	
The number of recorded Criminal Damage offences	To reduce the number of recorded offences by 3%	Apr-Aug 2006	3314	1140	416	958	800
		Apr-Aug 2005	3442	1187	483	1011	761
		Difference	-128	-47	-67	-53	39
		% Change	-3.7%	-4.0%	-13.9%	-5.2%	5.1%

* *sanction detections are those offences resulting in a charge, summons, caution, taken into consideration at court, or where the offence results in a penalty notice for disorder or a formal warning for cannabis.*

Local Policing Domain – Section Summary

2006/07: LOCAL POLICING DOMAIN – LOCAL PRIORITIES AND TARGET CONTRIBUTION

Section Breakdown: April – August 2006 YTD

Class A Drugs; Domestic Violence; Violent Crime

Section	Class A Drugs				Violent Crime				Violent Crime Proportion violent offences resulting in sanction det. (Target - 58%)
	No. offenders charged with trafficking	% Change (Target – To increase the numbers of offenders charged up 10%)	SPLY	Diff	No. DV Repeats (same offender)	% Change (Target – To reduce the number of repeat incidents by 7%)	Baseline Data: Apr 05 - Mar 06	Diff	
Amman/Towy (AW)	1	-83.3%	6	-5	51	10.9%	46	5	56.0%
Carmarthen (AC)	2	No Calc	0	2	24	-14.3%	28	-4	59.6%
Carmarthen Rural (AY)	12	No Calc	0	12	17	21.4%	14	3	51.6%
Gwendraeth (AT)	1	No Calc	0	1	54	14.9%	47	7	43.1%
Llanelli (AL)	3	-40.0%	5	-2	80	-14.9%	94	-14	62.1%
Llanelli Rural (AZ)	2	No Calc	0	2	54	0.0%	54	0	64.7%
CARMS	21	90.9%	11	10	280	-1.1%	283	-3	59.9%
Ceredigion North (BN)	9	125.0%	4	5	26	-33.3%	39	-13	49.6%
Ceredigion South (BS)	2	0.0%	2	0	25	-3.8%	26	-1	50.7%
CEREDIGION	11	83.3%	6	5	51	-21.5%	65	-14	50.1%
Fishguard (CF)	0	No Change	0	0	42	-12.5%	48	-6	55.8%
Haverfordwest (CH)	1	-50.0%	2	-1	64	-29.7%	91	-27	52.7%
Milford Haven (CM)	0	-100.0%	1	-1	66	-25.0%	88	-22	60.5%
Pembroke Dock (CP)	5	150.0%	2	3	101	16.1%	87	14	51.1%
Tenby (CT)	11	No Calc	0	11	19	-38.7%	31	-12	54.0%
PEMBS	17	240.0%	5	12	292	-15.4%	345	-53	54.4%
Brecon (DB)	1	No Calc	0	1	24	-25.0%	32	-8	58.7%
Llandrindod Wells (DL)	1	No Calc	0	1	29	-23.7%	38	-9	58.4%
Newtown (DN)	2	0.0%	2	0	72	53.2%	47	25	55.3%
Welshpool (DW)	0	-100.0%	3	-3	19	-29.6%	27	-8	62.8%
Ystradgynlais (DY)	0	No Change	0	0	11	-42.1%	19	-8	52.7%
POWYS	4	-20.0%	5	-1	155	-4.9%	163	-8	57.7%
FORCE	53	96.3%	27	26	778	-9.1%	856	-78	56.6%

Target for Sanction Detection Rate of Violent Crime is 58%. Any Section that is within 10% of this target is marked as reaching the target rate set.

Anti-Social Behaviour

Section	Anti-Social Behaviour				Anti-Social Behaviour			
	No. Anti-social Incidents	% change (Target – To reduce the number of recorded incidents by 5%)	SPLY	Diff	No. Criminal Damage Offences	% change (Target – To reduce the numbers of recorded Criminal Damage offences by 3%)	SPLY	Diff
Amman/Towy (AW)	774	-14.5%	905	-131	221	4.7%	211	10
Carmarthen (AC)	507	-25.0%	676	-169	153	-16.4%	183	-30
Carmarthen Rural (AY)	429	-7.1%	462	-33	88	-7.4%	95	-7
Gwendraeth (AT)	735	4.9%	701	34	159	-15.4%	188	-29
Llanelli (AL)	1070	7.1%	999	71	353	17.3%	301	52
Llanelli Rural (AZ)	866	29.8%	667	199	166	-20.6%	209	-43
CARMS	4381	-0.7%	4410	-29	1140	-4.0%	1187	-47
Ceredigion North (BN)	764	-5.3%	807	-43	254	3.3%	246	8
Ceredigion South (BS)	692	-11.4%	781	-89	162	-31.6%	237	-75
CEREDIGION	1456	-8.3%	1588	-132	416	-13.9%	483	-67
Fishguard (CF)	460	24.7%	369	91	112	17.9%	95	17
Haverfordwest (CH)	798	20.9%	660	138	193	3.2%	187	6
Milford Haven (CM)	909	1.5%	896	13	236	4.9%	225	11
Pembroke Dock (CP)	793	11.4%	712	81	243	-26.6%	331	-88
Tenby (CT)	617	-2.8%	635	-18	174	0.6%	173	1
PEMBS	3577	9.3%	3272	305	958	-5.2%	1011	-53
Brecon (DB)	691	4.9%	659	32	218	2.8%	212	6
Llandrindod Wells (DL)	549	2.8%	534	15	139	0.0%	139	0
Newtown (DN)	822	19.8%	686	136	265	14.7%	231	34
Welshpool (DW)	411	6.2%	387	24	139	17.8%	118	21
Ystradgynlais (DY)	344	67.8%	205	139	39	-36.1%	61	-22
POWYS	2817	14.0%	2471	346	800	5.1%	761	39
FORCE	12336	4.3%	11826	510	3314	-3.7%	3442	-128

PPAF Statutory Performance Indicator Summary

Reported Quarterly

HOME OFFICE POLICE PERFORMANCE ASSESSMENT FRAMEWORK MEASURES

This Data is Updated Quarterly – Latest: April 2006 – August 2006 (except where stated).

Activity	SPI Number	Indicator Description	2005/06 Performance	2006/07 Performance	Change	2006/07 End of Year Target
User Satisfaction Measures	1a [^]	Satisfaction of victims of domestic burglary, violent crime, vehicle crime and road traffic collisions with respect to - a) making contact with the Police	92.3%	93.8%	1.5%	93%
	1b [^]	b) action taken by the Police	87.5%	83.8%	-3.7%	85%
	1c [^]	c) Being kept informed of progress	74.4%	71.6%	-2.8%	75%
	1d [^]	d) Their treatment by staff	92.7%	91.8%	-0.9%	93%
	1e [^]	e) the overall service provided	85.6%	82.2%	-3.5%	86%
Confidence	2a ^{^^}	Using the BCS, the % of people who think their local police do a good job	57.5%	55.1%	-2.4%	56%
Fairness and Equality Measures	3a [^]	Satisfaction of victims of racist incidents with respect to the overall service provided	66.7%	80.0%	13.3%	86%
	3b [^]	From SPI 1(e), comparison of satisfaction for white users and users from visible minority ethnic groups with respect to the overall service provided.	White - 86.0% Ethnic - 83.3%	White - 82.4% Ethnic - 86.0%	White -3.6% Ethnic +2.7%	White - 86% Ethnic - 73%
	3c(i) [^]	(i) % of PACE stop/searches which lead to arrest by ethnicity	White - 15.4% Ethnic - 19.5%	White - 16.0% Ethnic - 41.2%	White +0.6% Ethnic -21.7%	White - 20% Ethnic - 20%
	3d [^]	Comparison of percentage detected of violence against the person offences by ethnicity of the victim (sanction detections)	White - 34.8% Ethnic - 24.2%	White - 47.4% Ethnic - 54.2%	White +12.6% Ethnic +30.0%	White - 35% Ethnic - 35%
	3e [^]	Proportion of police recruits (ethnic) compared to the proportion of people from minority ethnic groups in the economically active population (EAP).	0.0% of recruits 1.0% of EAP	0.0% of recruits 1.0% of EAP	-	1.0%
	3g [^]	% of female police officers compared to overall Force strength.	20.1%	21.4%	1.3%	20%
Measures of Crime Levels	4a ^{^^}	Using the British Crime Survey (a) the risk of personal crime; and	3.4%	3.0%	-0.4%	8%
	4b ^{^^}	(b) the risk of household crime.	12.1%	9.0%	-3.1%	11%
	5b [*]	(b) Violent crime per 1,000 population.	6.09 (3077 crimes)	6.39 (3230 crimes)	+0.3 (+153 crimes)	15.7 (7945 crimes)
	5e [^]	(e) Life threatening crime and gun crime per 1,000 population.	0.11 (56 crimes)	0.08 (39 crimes)	-0.03 (-17 crimes)	0.28
	5f [*]	(f) Acquisitive Crime per 1,000 population	2.27 (1149 crimes)	2.18 (1103 crimes)	-0.09 (-46 crimes)	6.5
Offences Brought to Justice Measures (OBTJ)	6b [^]	% of notifiable/recorded offences resulting in convictions, caution or taken into consideration at court	38.3%	42.1%	3.8%	38%
Detection Measure	7a [*]	% of notifiable/recorded offences resulting in charge, summons, caution or taken into consideration at court ('sanction detections')	34.7%	40.9%	6.2%	40%
Domestic Violence Measures	8a	Percentage of domestic violence incidents where an arrest was made relating to the incident.	34.4%	45.6%	11.2%	38%
Asset Seizure	8c	Value of cash forfeiture orders and confiscation orders per 1,000 population	NEW	NEW	NEW	£338,254
Traffic Measures	9a(i) [^]	(i) Number of people killed in under 30 days or seriously injured in road traffic collisions	113 fatal or serious casualties	93 fatal or serious casualties	-20 casualties	403 fatal or serious casualties
	9a(ii) [^]	(ii) Number of persons killed or seriously injured in road traffic collisions per 100million vehicle kilometres travelled.	2.29	1.88	-17.9%	8.13
Quality of Life Measures	10a [^]	Using the British Crime Survey a) fear of crime	7.2%	4.9%	-2.3%	10%
	10b [^]	Perceptions of anti-social behaviour; and	9.1%	8.3%	-0.8%	8%
	10c [^]	Perceptions of local drug use / drug dealing	22.8%	22.9%	0.1%	22%
Resource Use Measures	11a	Percentage of police officer time spent on frontline duties	N/A	N/A	-	70%
	12a	Delivery of cashable and non-cashable efficiency targets	NEW	NEW	-	3%
	13a [^]	Percentage of working hours lost due to sickness for police officers	NEW	2.65%	NEW	NEW
	13b [^]	Percentage of working hours lost due to sickness for police staff	NEW	3.74%	NEW	NEW
NEW PPAF DOMAIN						
Local Policing Domain	LP 1.1	No. of class A drug offenders charged with trafficking	27	53	96.3%	+10%
	LP 1.2 ^{**}	No. of class A drug offences resulting in a conviction or caution, or which the offender has asked it to be taken into consideration at court.	11	5	-54.5%	+10%
	LP 2.1 [*]	No. of incidents involving victims of domestic violence who have been a victim in more than one incident in the previous 12-months.	856	776	-9.3%	-7%
	LP 2.2 [*]	% of violent crime detected (sanction detections)	45.7% (1,405)	56.9% (1,837)	+11.2% (+432 dets)	58%
	LP 3.1 [*]	Number of incidents of anti-social behaviour reported to the police.	9175	9,708	5.8%	-5%
	LP 3.2 [*]	Number of total criminal damage offences (exc HOC 56 and 59).	2,756	2,583	-6.3%	-3%

[^] Latest data available for the period April-June 2006

^{^^} Latest data available for the period April 2005 -March 2006

^{*} Latest data available for the period April-July 2006

^{**} Latest data available for the period April-May 2006