



Heddlu Dyfed-Powys Police

CRIME TRENDS UPDATE **September 2006**

Contents:

Headline Statistics	2
Most Frequent Recorded Offences Profile	3
Recorded Crimes and Detection Rates	4
Domestic Burglaries and Detection Rates	5
Other Burglary and Detection Rates	6
Violent Crime and Detection Rates	7
Vehicle Crime and Detection Rates	8
Criminal Damage and Detection Rates	9
Drugs Statistics and Detection Rates	10
Section Level Sanction Detection Summary	11
Domestic Incidents	13
User Satisfaction	14
Narrowing the Justice Gap	15
Road Traffic Collisions	16
Roads Policing Performance	17
Local Policing Domain	18
PPAF Statutory Performance Indicator Summary	20

Heddlu Dyfed Powys Police: Corporate Services



Recorded Crime:

- Total Recorded Crime is down by 0.1% (-23 crimes) compared to the same period last year (SPLY) to stand at 16,339 crimes. The monthly figure for September 2006 stands at 2,628, an increase of 9% (+226 offences) on the same month in 2005, but a 5% (-128 offences) decrease on the preceding month August 2006.
- Recorded detection performance has a total detection rate for the force at 42% (6,877 total detections) compared with 42% the previous year. The volume of total detections has decreased by 1% (-67 detections). The sanction detection rate stands at 40% - this is consistent with the target rate of 40% (and compared with 37% recorded last year). The volume of sanction detections has increased by 570 or 10%.

Domestic Burglary:

- Total Domestic Burglary offences are up by 5% (+22 crimes) compared to the same period last year (SPLY) to stand at 434 crimes. The monthly figure for September 2006 stands at 95, an increase of 46% (+30 offences) on the same month in 2005, and a 16% (+13 offences) increase on the preceding month August 2006.
- Recorded detection performance has risen compared with last year, with the total detection rate for the force at 33% (144 detections) compared with 28% the previous year. The volume of total detections has increased by 25% (+29 detections). The sanction detection rate stands at 33% (up from 27% last year) with the volume of sanction detections increasing by 31% (+34).

Violent Crimes:

- Total Violent crime offences are up by 4% (+136 crimes) compared to the same period last year (SPLY) to stand at 4,653 crimes. The monthly figure for September 2006 stands at 705, an increase of 6% (+37 offences) on the same month in 2005, but a 2% (-13 offences) decrease on the preceding month August 2006.
- Recorded detection performance stands at a total detection rate for the force of 59% (2,735 detections) down from 61% last year. The volume of total detections has decreased by 0.4% (-12) over this period. Furthermore the sanction detection rate stands at 56% (compared with 49% last year) with the volume recorded up by 18% (+402 sanction detections).

Vehicle Crime:

- Total Vehicle crime is down by 0.1% (-1 crime) compared to the same period last year (SPLY) to stand at 1,026 crimes. The monthly figure for September 2006 stands at 178, an increase of 2% (+3 offences) on the same month in 2005, and a 11% increase (+17 offences) on the preceding month August 2006.
- Recorded total detection stands at 17% (178 detections) up from 16% the previous year. The volume of total detections has increased by 12% (+19) over this period. The sanction detection rate stands at 17% (compared with 14% last year) with the volume up on the previous year (+35 sanction detections or 25%).

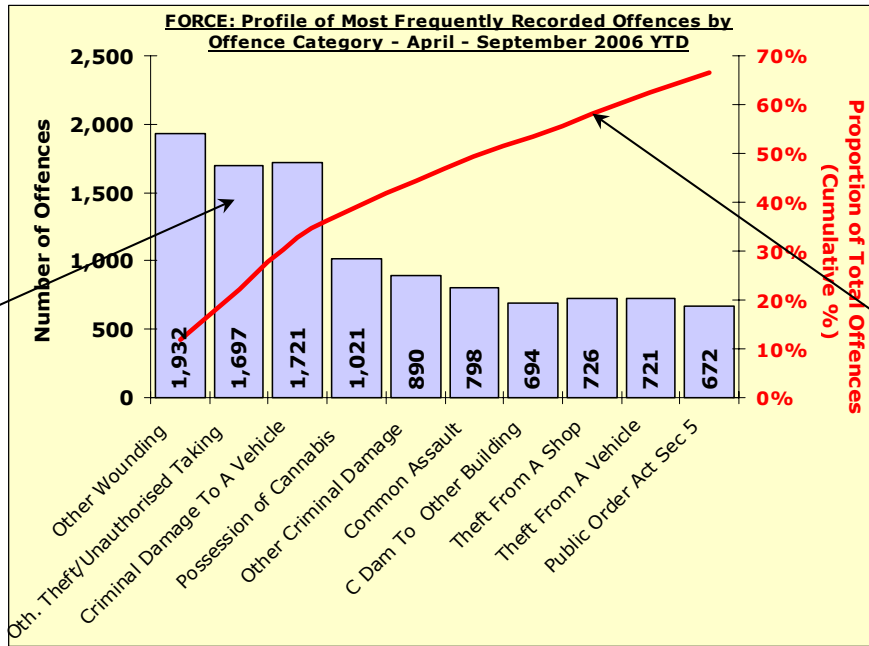
Criminal Damage:

- Total Criminal Damage has decreased by 0.4% (-16 crimes) compared to the same period last year (SPLY) to stand at 4,133. The monthly figure for September 2006 stands at 675, an increase of 25% (+132 offences) on the same month in 2005, but a decrease of 11% (-85) on the previous month August 2006.
- Recorded detection performance stands at a total detection rate for the force of 24% (987 detections) consistent with 27% last year. The volume of total detections has decreased by 11% (-122) over this period. The sanction detection rate stands at 22% (compared with 22% last year) with the volume down 0.4% over this period (-4 sanction detections).

Most Frequent Recorded Offences Profile

DYFED-POWYS POLICE

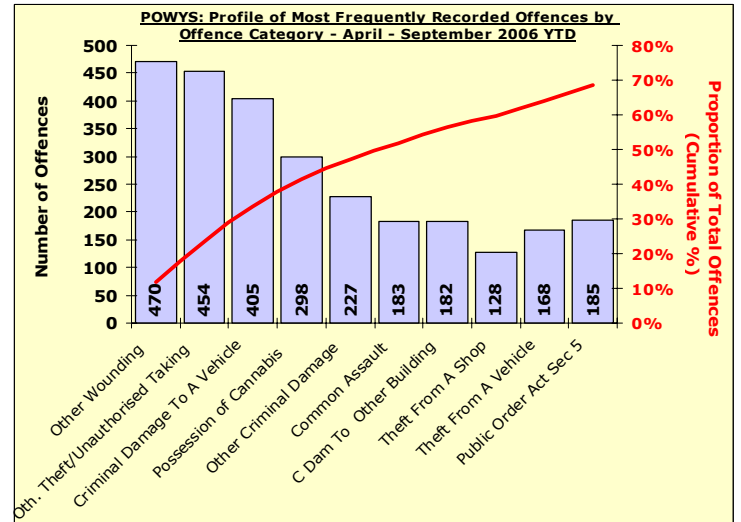
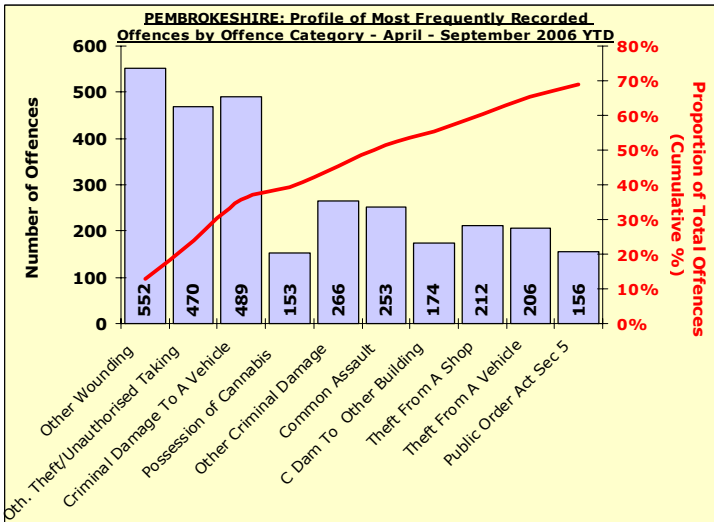
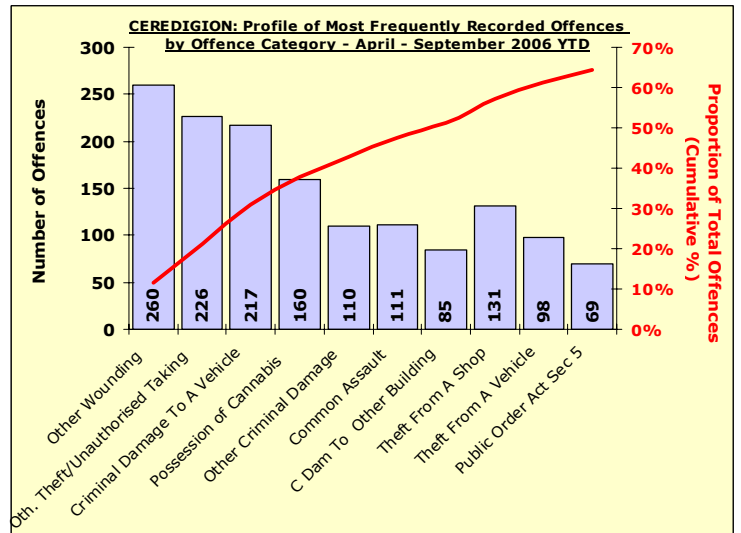
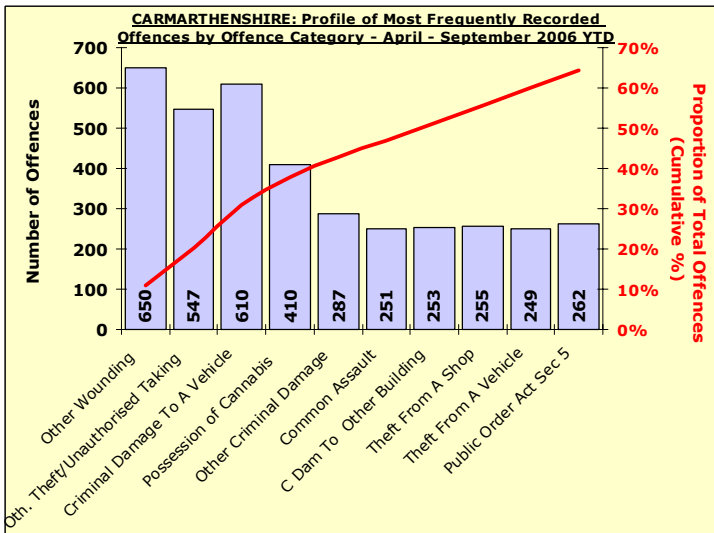
September 2006 YTD (Note : Divisional profiles are in the same sequence as forces' most frequent categories – for comparison)



Recorded offences in each category in order of volume.

(Note these can include a number of sub-categories)

The cumulative contribution of these offence categories toward the total volume of offences recorded.

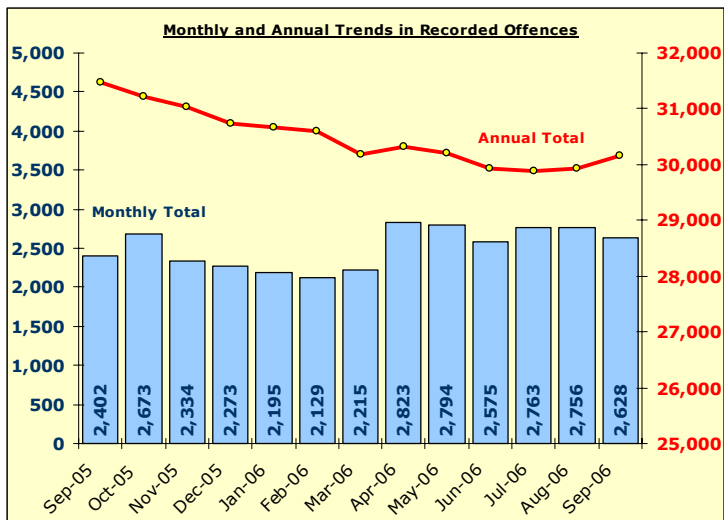


Total Recorded Crime

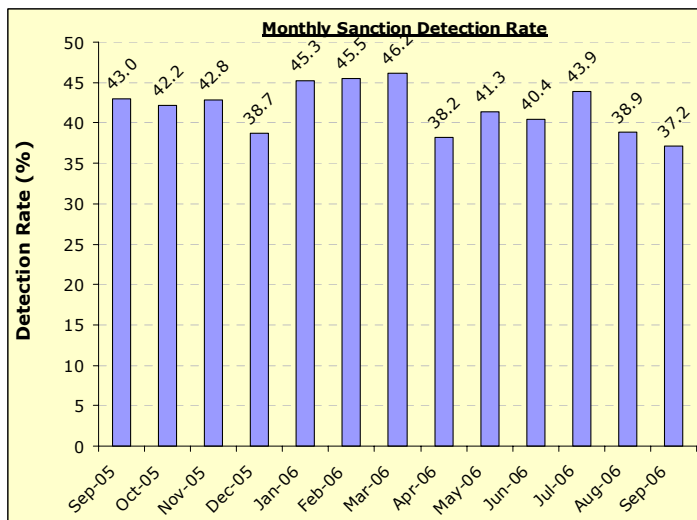
DYFED-POWYS POLICE

TARGET 2006/07 : NO REDUCTION TARGET – 40% SANCTION DETECTION RATE (Local Criminal Justice Board Target 32.8%)

Recorded Crime Levels – September 2006

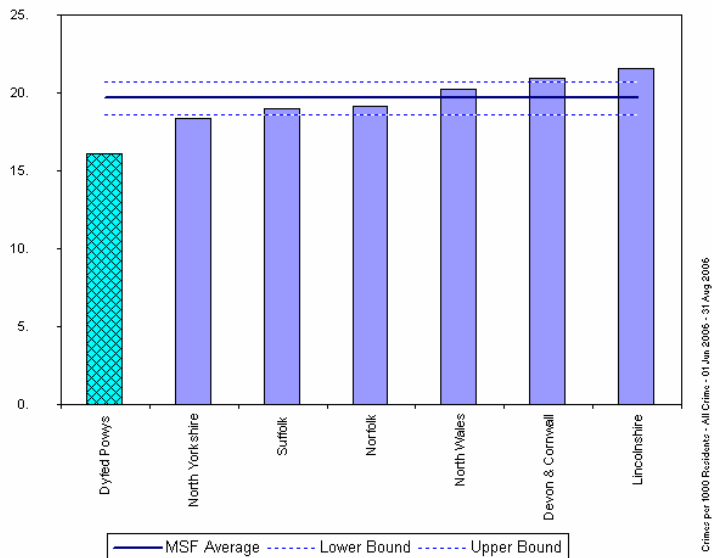


Monthly Sanction Detection Rates – September 2006

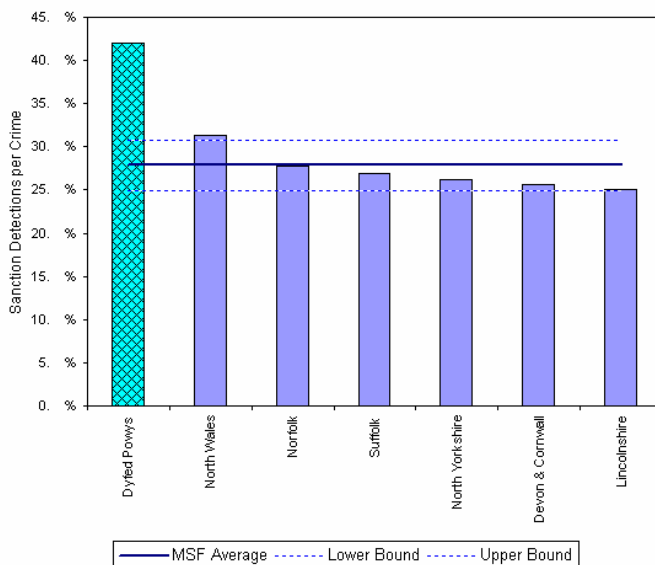


TOTAL ALL OFFENCES	YTD: Sep-06			Detection Rates YTD		Annual Trends SPL Y		
	Recorded Offences	Sanction Detections	Total Detections	Sanction Detection Rate	Total Detection Rate	Recorded Offences	Diff in Number	% Change in Offences
THE FORCE	16,339	6,535	6,877	40.0%	42.1%	16,362	- 23	- 0.1%
Carmarthenshire	5,866	2,478	2,578	42.2%	43.9%	5,891	- 25	- 0.4%
Ceredigion	2,281	975	1,024	42.7%	44.9%	2,270	+ 11	+ 0.5%
Pembrokeshire	4,252	1,548	1,657	36.4%	39.0%	4,201	+ 51	+ 1.2%
Powys	3,940	1,534	1,618	38.9%	41.1%	4,000	- 60	- 1.5%

MSF – Crimes per 1000 Residents 01 June – 31 August 2006 (latest quarter)



MSF – Sanction detections (annual): 01 September 2005 – 31 August 2006 (latest)

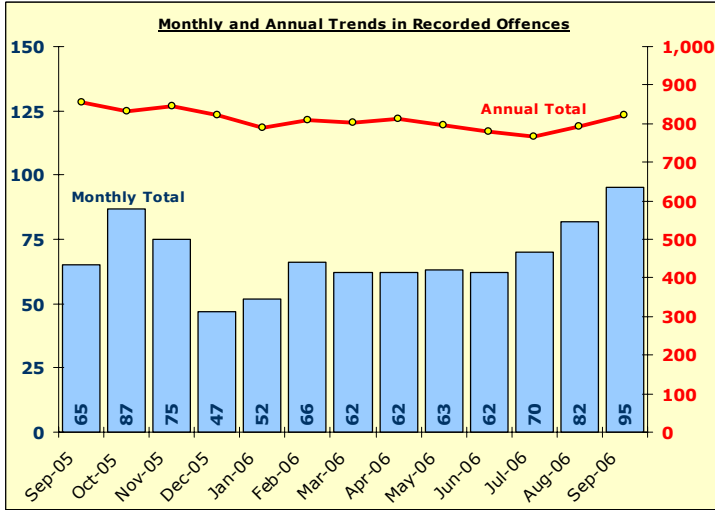


Domestic Burglary

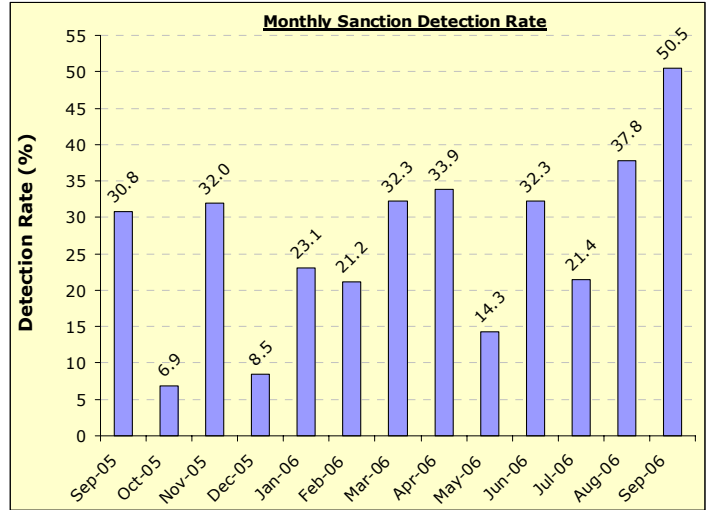
DYFED-POWYS POLICE

TARGET 2006/07 : 2% reduction in offences & 23% sanction detection rate

Recorded Crime Levels – September 2006

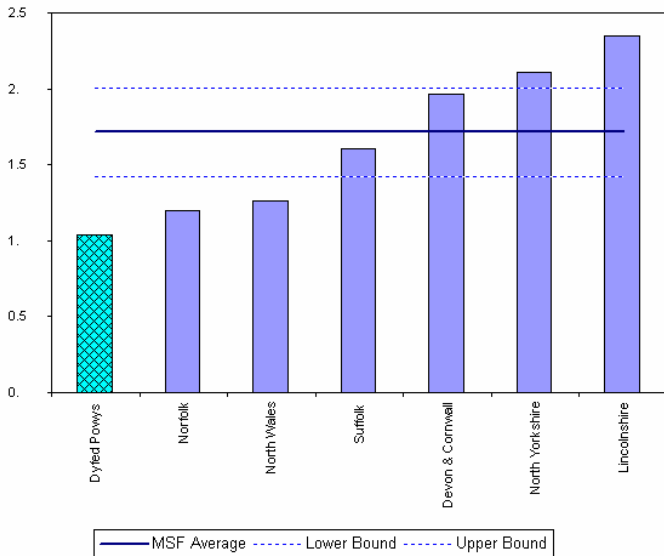


Monthly Sanction Detection Rates – September 2006

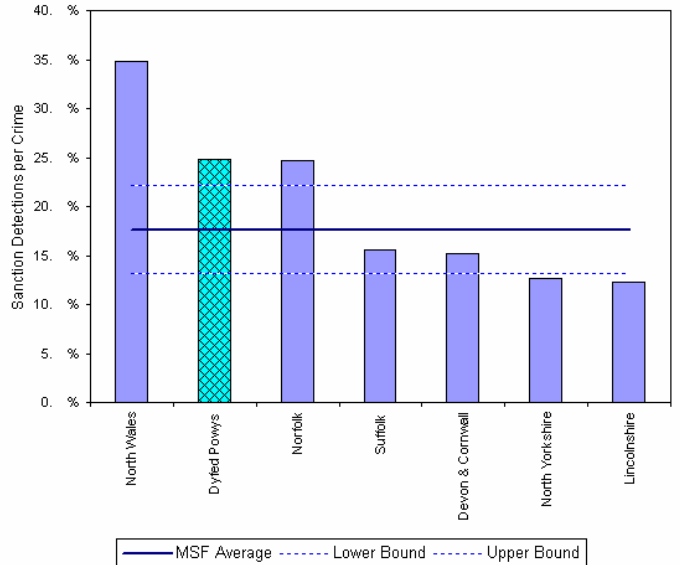


Total Domestic Burglary	YTD: Sep-06			Detection Rates YTD		Annual Trends SPLY		
	Recorded Offences	Sanction Detections	Total Detections	Sanction Detection Rate	Total Detection Rate	Recorded Offences	Diff in Number	% Change in Offences
THE FORCE	434	144	144	33.2%	33.2%	412	+ 22	+ 5.3%
Carmarthenshire	172	79	79	45.9%	45.9%	175	- 3	- 1.7%
Ceredigion	56	14	14	25.0%	25.0%	42	+ 14	+ 33.3%
Pembrokeshire	110	22	22	20.0%	20.0%	95	+ 15	+ 15.8%
Powys	96	29	29	30.2%	30.2%	100	- 4	- 4.0%

MSF – Crimes per 1000 Residents 01 June 2006 – 31 August 2006 (latest quarter)



MSF – Sanction detections (annual): 01 September 2005 – 31 August 2006 (latest)

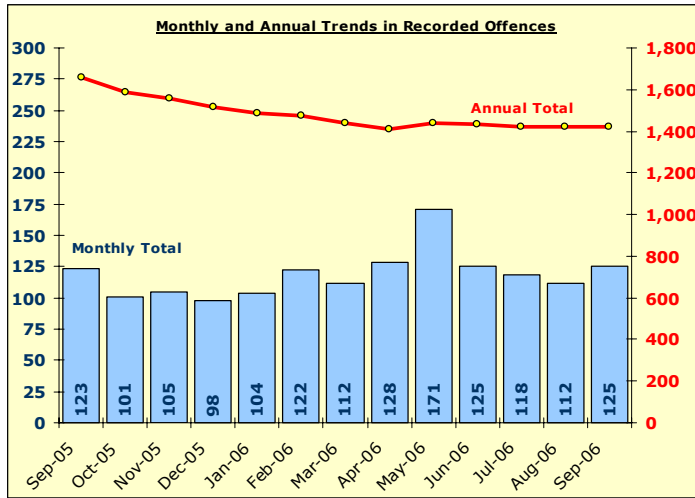


Other Burglary

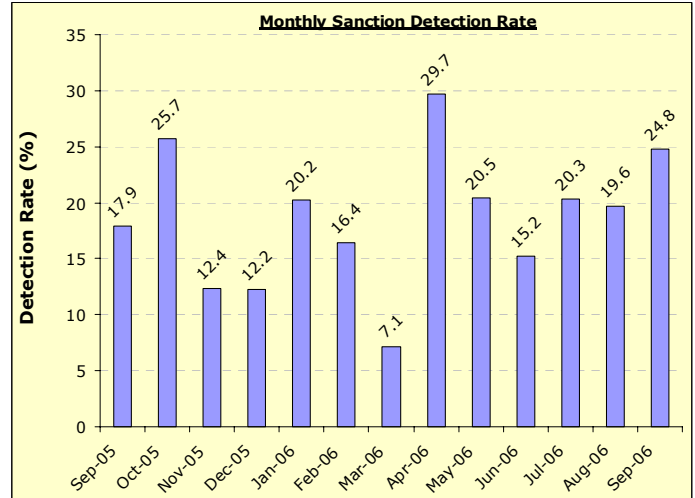
DYFED-POWYS POLICE

TARGET 2006/07 : No Target

Recorded Crime Levels – September 2006

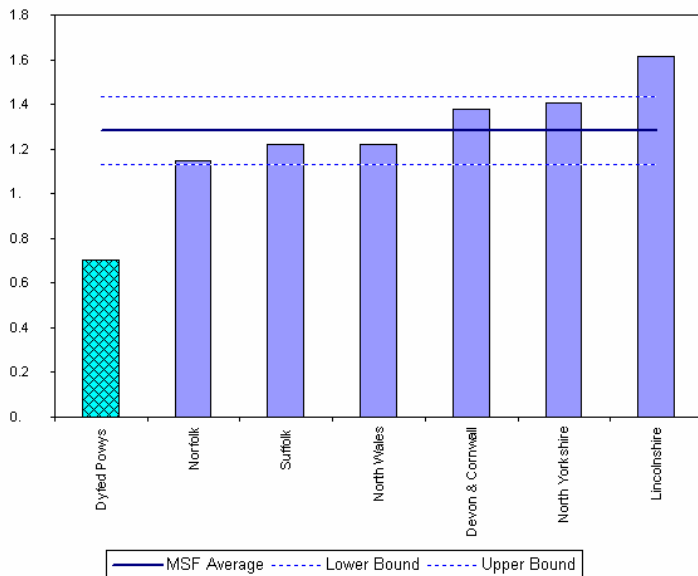


Monthly Sanction Detection Rates – September 2006



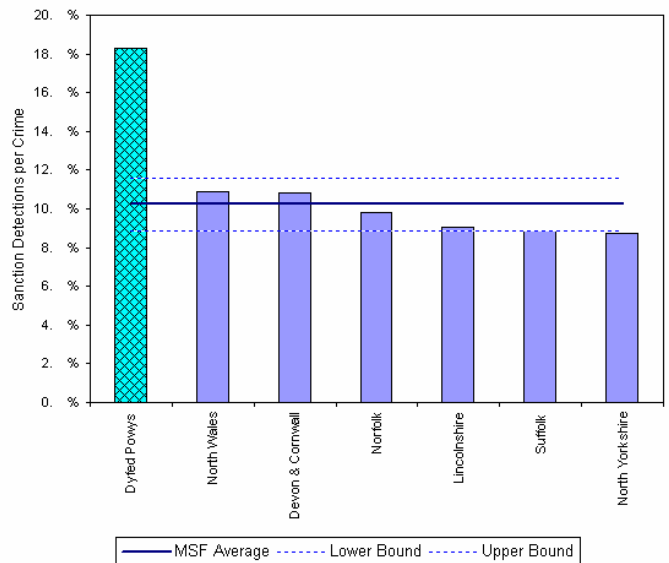
Total Other Burglary	YTD: Sep-06			Detection Rates YTD		Annual Trends SPLY		
	Recorded Offences	Sanction Detections	Total Detections	Sanction Detection Rate	Total Detection Rate	Recorded Offences	Diff in Number	% Change in Offences
THE FORCE	779	169	174	21.7%	22.3%	797	- 18	- 2.3%
Carmarthenshire	365	79	81	21.6%	22.2%	352	+ 13	+ 3.7%
Ceredigion	89	24	25	27.0%	28.1%	72	+ 17	+ 23.6%
Pembrokeshire	137	40	41	29.2%	29.9%	160	- 23	- 14.4%
Powys	188	26	27	13.8%	14.4%	213	- 25	- 11.7%

MSF – Crimes per 1000 Residents 01 June 2006 – 31 August 2006 (latest quarter)



Crimes per 1000 Residents - Non Domestic Burglary - 01 Jun 2006 - 31 Aug 2006

MSF – Sanction detections (annual): 01 September 2005 – 31 August 2006 (latest)



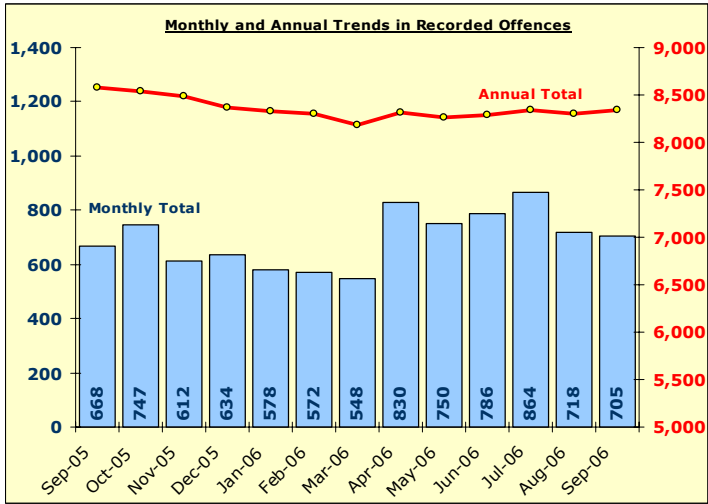
Barddon MSF - Sanction Detections per Crime-Dyfed Powys-Non Domestic Burglary-01 Sep 2005 - 31 Aug 2006

Total Violent Crime

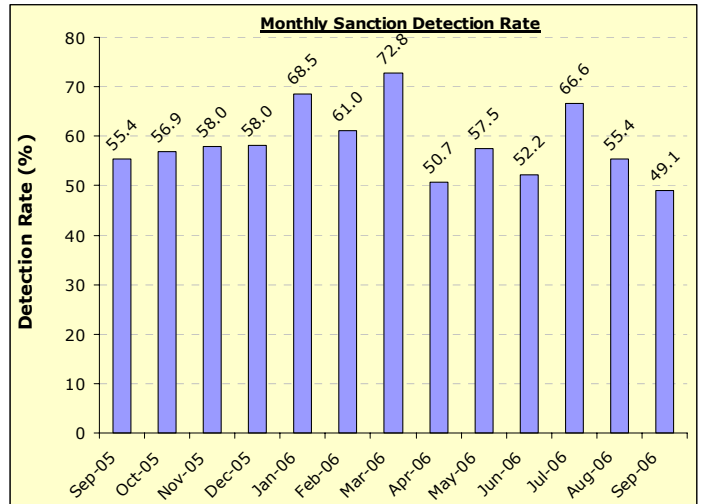
DYFED-POWYS POLICE

TARGET 2006/07 – 3% reduction in offences & 58% sanction detection rate

Recorded Crime Levels – September 2006

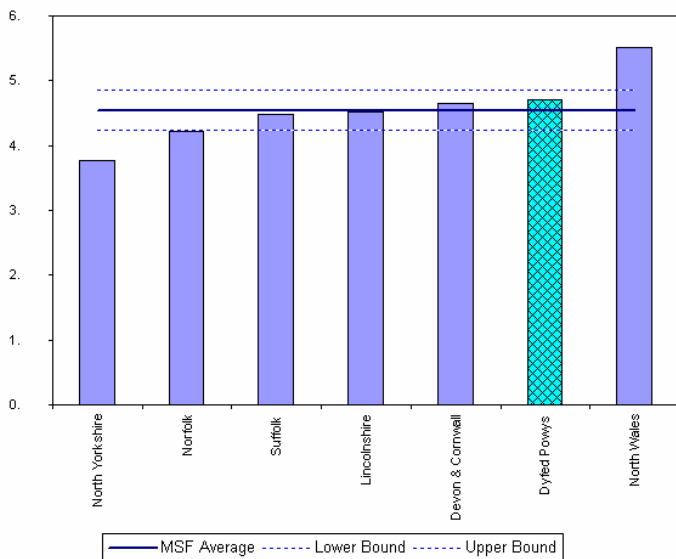


Monthly Sanction Detection Rates – September 2006

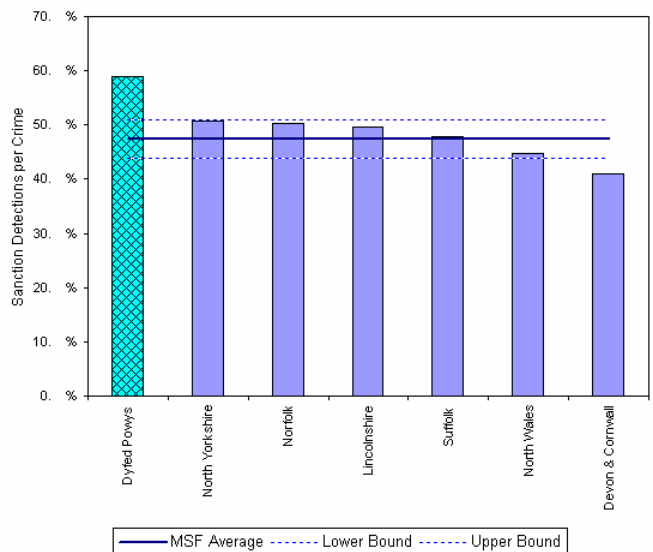


Total Violent Crime	YTD: Sep-06			Detection Rates YTD		Annual Trends SPLY		
	Recorded Offences	Sanction Detections	Total Detections	Sanction Detection Rate	Total Detection Rate	Recorded Offences	Diff in Number	% Change in Offences
THE FORCE	4,653	2,581	2,735	55.5%	58.8%	4,497	+ 156	+ 3.5%
Carmarthenshire	1,653	959	995	58.0%	60.2%	1,518	+ 135	+ 8.9%
Ceredigion	619	303	329	48.9%	53.2%	595	+ 24	+ 4.0%
Pembrokeshire	1,253	686	739	54.7%	59.0%	1,081	+ 172	+ 15.9%
Powys	1,128	633	672	56.1%	59.6%	1,303	- 175	- 13.4%

MSF – Crimes per 1000 Residents 01 June 2006 – 31 August 2006 (latest quarter)



MSF – Sanction detections (annual): 01 September 2005 – 31 August 2006 (latest)

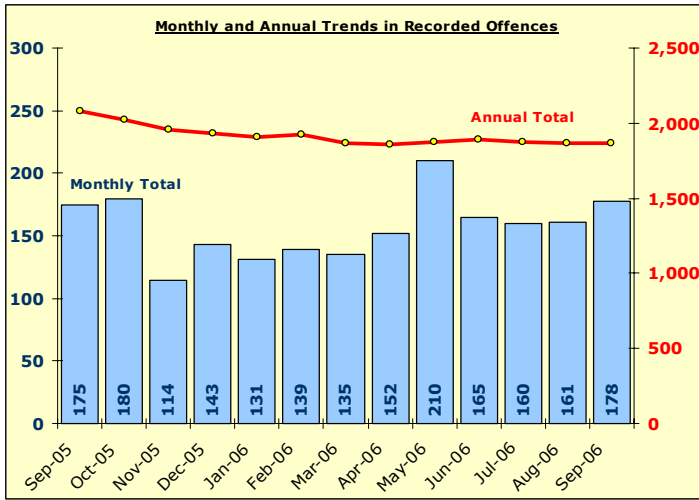


Total Vehicle Crime

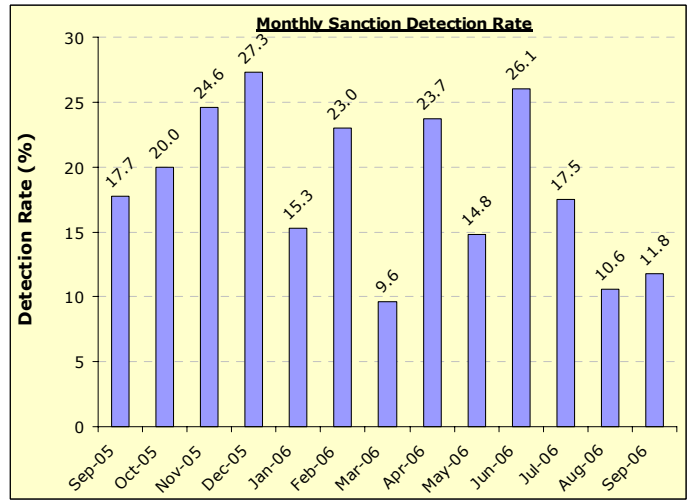
DYFED-POWYS POLICE

TARGET 2006/07 : 2% reduction in offences & 16% sanction detection rate

Recorded Crime Levels – September 2006

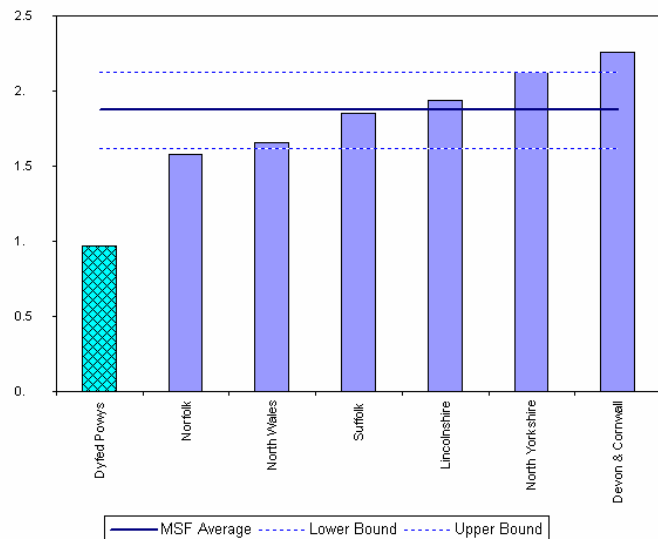


Monthly Sanction Detection Rates – September 2006



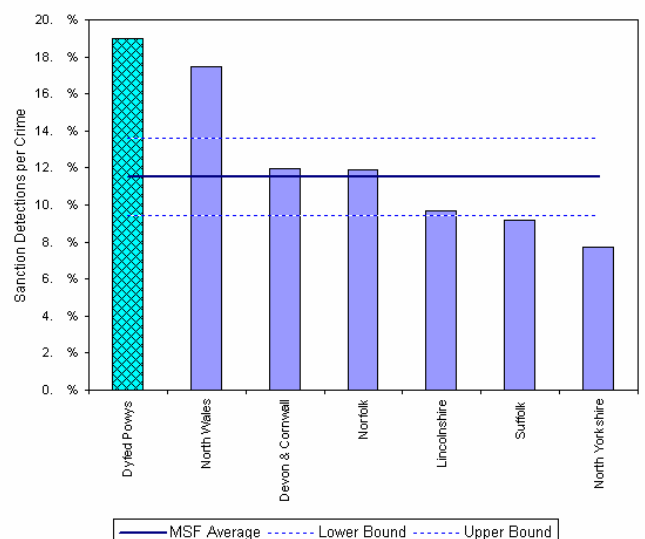
Total Autocrime	YTD: Sep-06			Detection Rates YTD		Annual Trends SPLY		
	Recorded Offences	Sanction Detections	Total Detections	Sanction Detection Rate	Total Detection Rate	Recorded Offences	Diff in Number	% Change in Offences
THE FORCE	1,026	176	178	17.2%	17.3%	1,027	- 1	- 0.1%
Carmarthenshire	388	63	63	16.2%	16.2%	424	- 36	- 8.5%
Ceredigion	139	44	46	31.7%	33.1%	112	+ 27	+ 24.1%
Pembrokeshire	268	28	28	10.4%	10.4%	262	+ 6	+ 2.3%
Powys	231	41	41	17.7%	17.7%	229	+ 2	+ 0.9%

MSF – Crimes per 1000 Residents 01 June 2006 – 31 August 2006 (latest quarter)



Crimes per 1000 Residents - Vehicle Crime (excluding Vehicle Interference) - 01 Jun 2006 - 31 Aug 2006

MSF – Sanction detections (annual): 01 September 2005 – 31 August 2006 (latest)



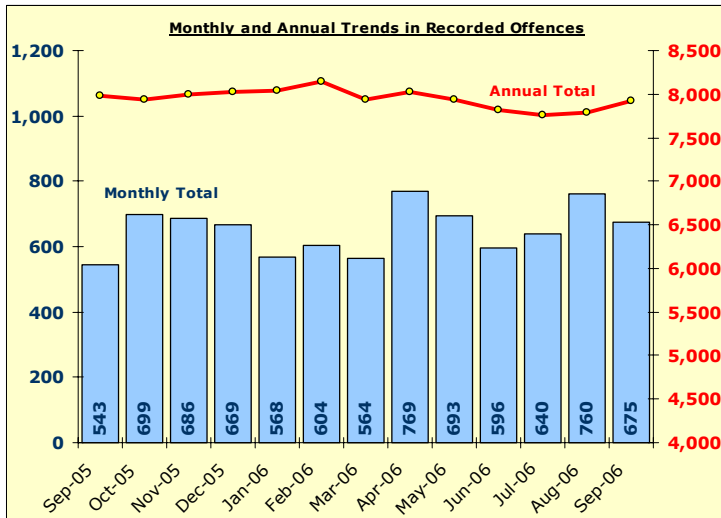
BarChart MSF - Sanction Detections per Crime-Dyfed Powys-Vehicle Crime (excluding Vehicle Interference)-01 Sep 2005 - 31 Aug 2006

Total Criminal Damage

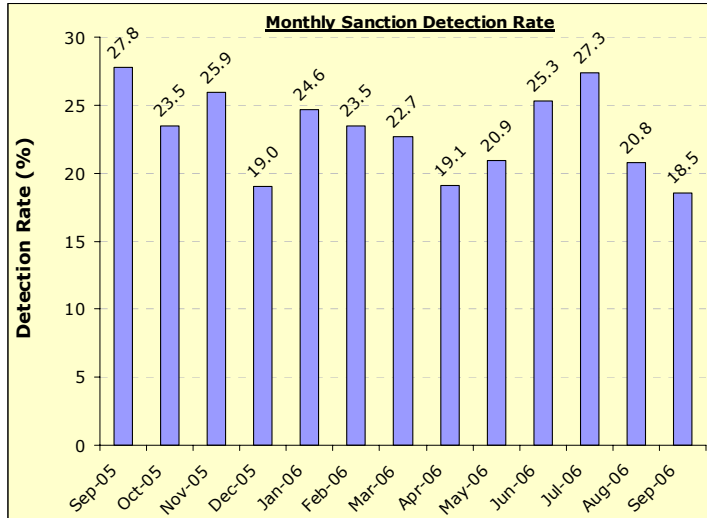
INCLUDES ARSON & THREAT TO COMMIT CRIMINAL DAMAGE

TARGET 2005/06 : 3% reduction in offences

Recorded Crime Levels – September 2006

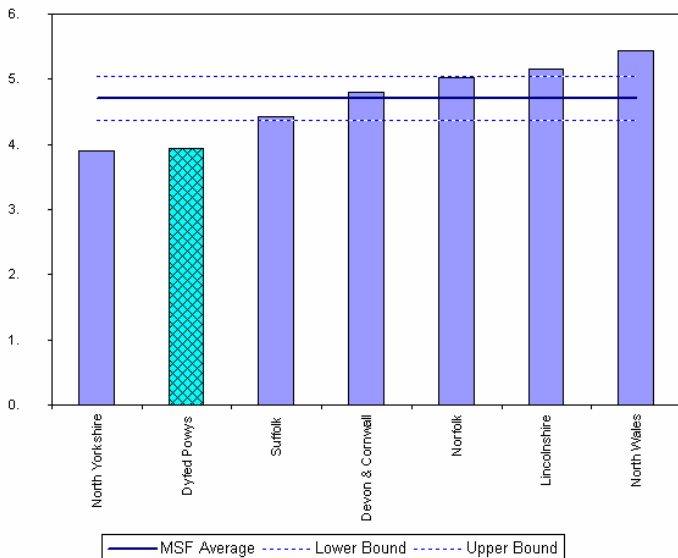


Monthly Sanction Detection Rates – September 2006

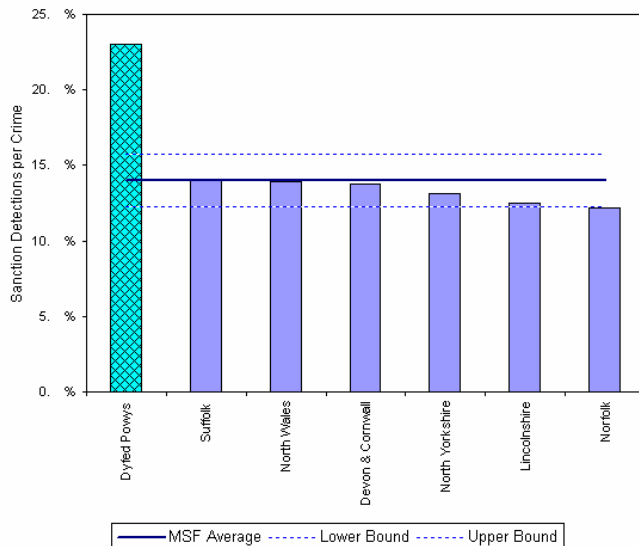


Total Criminal Damage	YTD: Sep-06			Detection Rates YTD		Annual Trends SPL Y		
	Recorded Offences	Sanction Detections	Total Detections	Sanction Detection Rate	Total Detection Rate	Recorded Offences	Diff in Number	% Change in Offences
THE FORCE	4,133	901	987	21.8%	23.9%	4,149	- 16	- 0.4%
Carmarthenshire	1,449	310	342	21.4%	23.6%	1,459	- 10	- 0.7%
Ceredigion	514	134	140	26.1%	27.2%	583	- 69	- 11.8%
Pembrokeshire	1,182	245	272	20.7%	23.0%	1,190	- 8	- 0.7%
Powys	988	212	233	21.5%	23.6%	917	+ 71	+ 7.7%

MSF – Crimes per 1000 Residents 01 June 2006 – 31 August 2006 (latest quarter)



MSF – Sanction detections (annual): 01 September 2005 – 31 August 2006 (latest)

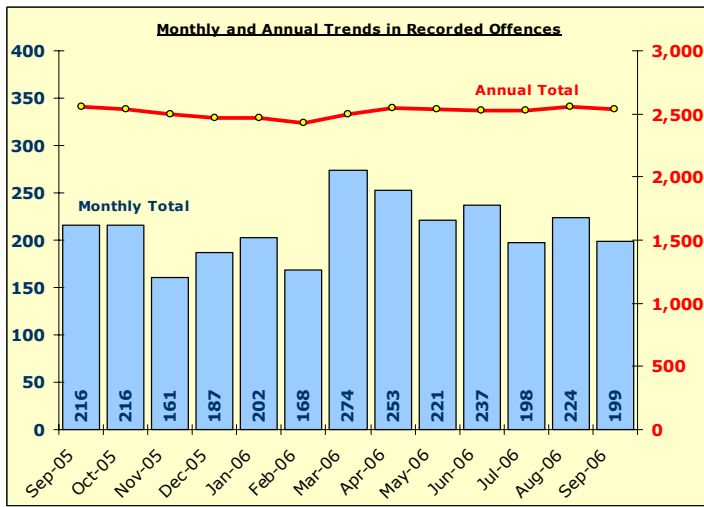


Total Drug Offences

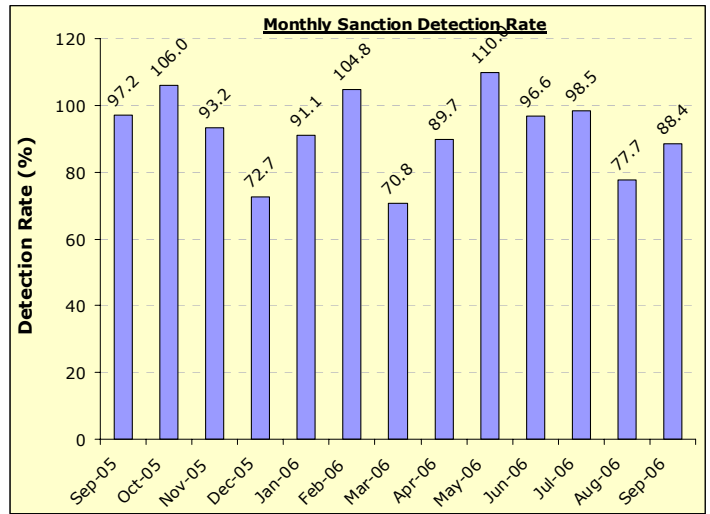
DYFED-POWYS POLICE

TARGET 2005/06 : NO TARGET

Recorded Crime Levels – September 2006

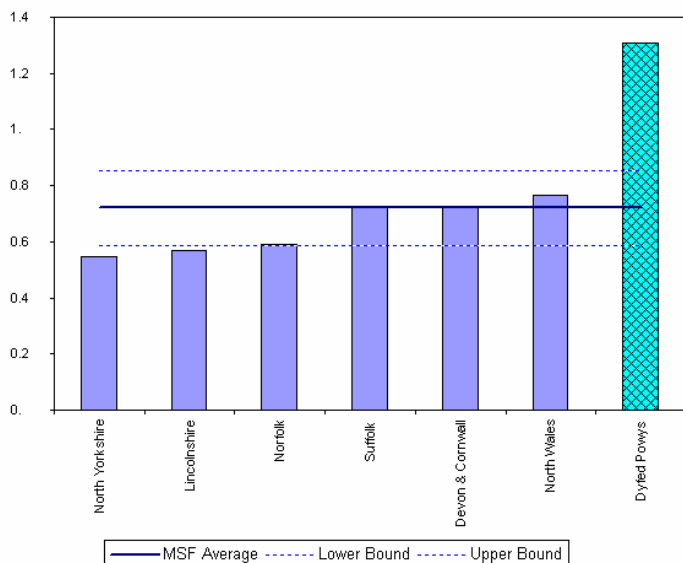


Monthly Sanction Detection Rates – September

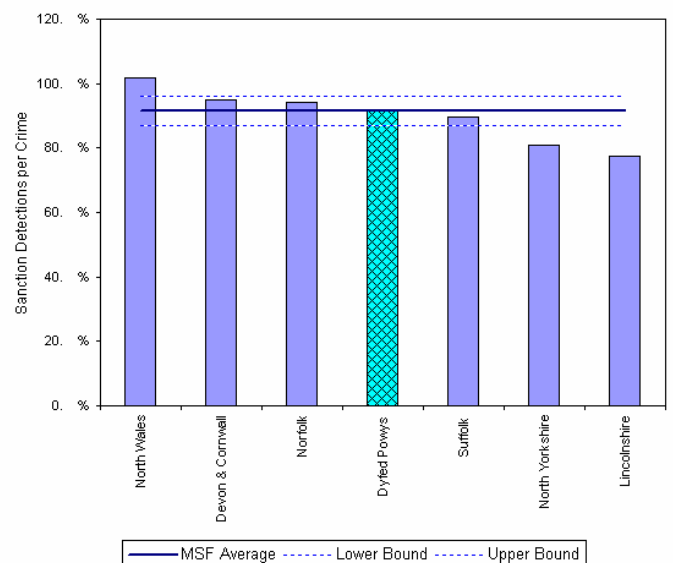


Total Drug Offences	YTD: Sep-06			Detection Rates YTD		Annual Trends SPLY		
	Recorded Offences	Sanction Detections	Total Detections	Sanction Detection Rate	Total Detection Rate	Recorded Offences	Diff in Number	% Change in Offences
THE FORCE	1,332	1,244	1,304	93.4%	97.9%	1,287	+ 45	+ 3.5%
Carmarthenshire	512	504	527	98.4%	102.9%	517	- 5	- 1.0%
Ceredigion	211	206	214	97.6%	101.4%	235	- 24	- 10.2%
Pembrokeshire	222	192	204	86.5%	91.9%	338	- 116	- 34.3%
Powys	387	342	359	88.4%	92.8%	197	+ 190	+ 96.4%

MSF – Crimes per 1000 Residents 01 June 2006 – 31 August 2006 (latest quarter)



MSF – Sanction detections (annual): 01 September 2005 – 31 August 2006 (latest)



Crimes per 1000 Residents - Drug Offences - 01 Jun 2006 - 31 Aug 2006

Bar chart MSF - Sanction Detections per Crime-Dyfed Powys-Drug Offences-01 Sep-2005 - 31 Aug 2006

Section Level Sanction Detection Summary

DYFED-POWYS POLICE

Total Recorded Crime & Domestic Burglary

Total Recorded Crimes: September 2006 YTD

Sanction Detection Rate	Recorded Offences	Sanction Detections	Sanction Detection Rate	Sanction Detections	Sanction Det Rate	Diff in Number of S Dets	% Change in No of S Dets.	Recorded Offences	Diff in Number
THE FORCE	16,339	6,536	40.0%	5,965	36.5%	+ 571	+ 9.6%	16,362	- 23
Carmarthenshire	5,866	2,479	42.3%	2,102	35.7%	+ 377	+ 17.9%	5,891	- 25
Amman/Towy (AW)	1,079	442	41.0%	404	41.0%	+ 38	+ 9.4%	986	+ 93
Carmarthen Town (AC)	867	373	43.0%	392	43.3%	- 19	- 4.8%	905	- 38
Carmarthen Rural (AY)	505	205	40.6%	192	37.4%	+ 13	+ 6.8%	514	- 9
Gwendraeth (AT)	900	348	38.7%	298	32.8%	+ 50	+ 16.8%	908	- 8
Llanelli Town (AL)	1,731	744	43.0%	583	32.5%	+ 161	+ 27.6%	1,796	- 65
Llanelli Rural (AZ)	784	367	46.8%	233	29.8%	+ 134	+ 57.5%	782	+ 2
Ceredigion	2,281	975	42.7%	869	38.3%	+ 106	+ 12.2%	2,270	+ 11
Ceredigion North (BA)	1,282	545	42.5%	493	41.0%	+ 52	+ 10.5%	1,203	+ 79
Ceredigion South (BS)	999	430	43.0%	376	35.2%	+ 54	+ 14.4%	1,067	- 68
Pembrokeshire	4,252	1,548	36.4%	1,491	35.5%	+ 57	+ 3.8%	4,201	+ 51
Fishguard (CF)	525	199	37.9%	160	33.1%	+ 39	+ 24.4%	483	+ 42
Haverfordwest (CH)	1,106	463	41.9%	339	33.3%	+ 124	+ 36.6%	1,018	+ 88
Milford Haven (CM)	848	310	36.6%	317	39.8%	- 7	- 2.2%	797	+ 51
Pembroke Dock (CP)	966	315	32.6%	413	38.0%	- 98	- 23.7%	1,086	- 120
Tenby (CT)	807	261	32.3%	262	32.1%	- 1	- 0.4%	817	- 10
Powys	3,940	1,534	38.9%	1,503	37.6%	+ 31	+ 2.1%	4,000	- 60
Brecon (DB)	1,078	404	37.5%	374	35.8%	+ 30	+ 8.0%	1,044	+ 34
Llandrindod Wells (DL)	648	240	37.0%	283	39.1%	- 43	- 15.2%	724	- 76
Newtown (DN)	1,187	491	41.4%	443	36.1%	+ 48	+ 10.8%	1,227	- 40
Welshpool (DW)	766	306	39.9%	284	40.7%	+ 22	+ 7.7%	698	+ 68
Ystradgynlais (DY)	261	93	35.6%	119	38.8%	- 26	- 21.8%	307	- 46

Total Domestic Burglary : September 2006 YTD

Sanction Detection Rate	Recorded Offences	Sanction Detections	Sanction Detection Rate	Sanction Detections	Sanction Det Rate	Diff in Number of S Dets	% Change in No of S Dets.	Recorded Offences	Diff in Number
THE FORCE	434	144	33.2%	110	26.7%	+ 34	+ 30.9%	412	+ 22
Carmarthenshire	172	79	45.9%	48	27.4%	+ 31	+ 64.6%	175	- 3
Amman/Towy (AW)	36	7	19.4%	11	52.4%	- 4	- 36.4%	21	+ 15
Carmarthen Town (AC)	10	2	20.0%	3	25.0%	- 1	- 33.3%	12	- 2
Carmarthen Rural (AY)	10	1	10.0%	4	26.7%	- 3	- 75.0%	15	- 5
Gwendraeth (AT)	25	7	28.0%	11	36.7%	- 4	- 36.4%	30	- 5
Llanelli Town (AL)	63	43	68.3%	13	18.6%	+ 30	+ 230.8%	70	- 7
Llanelli Rural (AZ)	28	19	67.9%	6	22.2%	+ 13	+ 216.7%	27	+ 1
Ceredigion	56	14	25.0%	11	26.2%	+ 3	+ 27.3%	42	+ 14
Ceredigion North (BA)	31	8	25.8%	7	25.9%	+ 1	+ 14.3%	27	+ 4
Ceredigion South (BS)	25	6	24.0%	4	26.7%	+ 2	+ 50.0%	15	+ 10
Pembrokeshire	110	22	20.0%	26	27.4%	- 4	- 15.4%	95	+ 15
Fishguard (CF)	12	3	25.0%	3	33.3%	=	=	9	+ 3
Haverfordwest (CH)	32	12	37.5%	6	20.0%	+ 6	+ 100.0%	30	+ 2
Milford Haven (CM)	26	4	15.4%	8	38.1%	- 4	- 50.0%	21	+ 5
Pembroke Dock (CP)	27	2	7.4%	4	19.0%	- 2	- 50.0%	21	+ 6
Tenby (CT)	13	1	7.7%	5	35.7%	- 4	- 80.0%	14	- 1
Powys	96	29	30.2%	25	25.0%	+ 4	+ 16.0%	100	- 4
Brecon (DB)	29	14	48.3%	2	11.8%	+ 12	+ 600.0%	17	+ 12
Llandrindod Wells (DL)	19	5	26.3%	9	39.1%	- 4	- 44.4%	23	- 4
Newtown (DN)	19	4	21.1%	10	26.3%	- 6	- 60.0%	38	- 19
Welshpool (DW)	20	5	25.0%	4	22.2%	+ 1	+ 25.0%	18	+ 2
Ystradgynlais (DY)	9	1	11.1%	0	No Calc	+ 1	-	4	+ 5

Section Level Sanction Detection Summary

DYFED-POWYS POLICE

Total Violent Crime and Total Vehicle Crime

Total Violent Recorded Crimes: September 2006 YTD

Sanction Detection Rate	Recorded Offences	Sanction Detections	Sanction Detection Rate	Sanction Detections	Sanction Det Rate	Diff in Number of S Dets	% Change in No of S Dets.	Recorded Offences	Diff in Number
THE FORCE	4,653	2,581	55.5%	2,179	48.5%	+ 402	+ 18.4%	4,497	+ 156
Carmarthenshire	1,653	959	58.0%	713	47.0%	+ 246	+ 34.5%	1,518	+ 135
Amman/Towy (AW)	247	133	53.8%	90	45.7%	+ 43	+ 47.8%	197	+ 50
Carmarthen Town (AC)	278	162	58.3%	156	56.3%	+ 6	+ 3.8%	277	+ 1
Carmarthen Rural (AY)	151	72	47.7%	66	56.9%	+ 6	+ 9.1%	116	+ 35
Gwendraeth (AT)	245	145	59.2%	107	45.9%	+ 38	+ 35.5%	233	+ 12
Llanelli Town (AL)	522	314	60.2%	200	41.9%	+ 114	+ 57.0%	477	+ 45
Llanelli Rural (AZ)	210	133	63.3%	94	43.1%	+ 39	+ 41.5%	218	- 8
Ceredigion	619	303	48.9%	299	50.3%	+ 4	+ 1.3%	595	+ 24
Ceredigion North (BA)	335	161	48.1%	183	56.5%	- 22	- 12.0%	324	+ 11
Ceredigion South (BS)	284	142	50.0%	116	42.8%	+ 26	+ 22.4%	271	+ 13
Pembrokeshire	1,253	686	54.7%	513	47.5%	+ 173	+ 33.7%	1,081	+ 172
Fishguard (CF)	150	79	52.7%	50	43.1%	+ 29	+ 58.0%	116	+ 34
Haverfordwest (CH)	349	181	51.9%	131	41.2%	+ 50	+ 38.2%	318	+ 31
Milford Haven (CM)	243	144	59.3%	114	47.5%	+ 30	+ 26.3%	240	+ 3
Pembroke Dock (CP)	318	176	55.3%	116	49.8%	+ 60	+ 51.7%	233	+ 85
Tenby (CT)	193	106	54.9%	102	58.6%	+ 4	+ 3.9%	174	+ 19
Powys	1,128	633	56.1%	654	50.2%	- 21	- 3.2%	1,303	- 175
Brecon (DB)	275	170	61.8%	184	56.1%	- 14	- 7.6%	328	- 53
Llandrindod Wells (DL)	176	96	54.5%	138	54.1%	- 42	- 30.4%	255	- 79
Newtown (DN)	424	223	52.6%	174	40.8%	+ 49	+ 28.2%	426	- 2
Welshpool (DW)	182	105	57.7%	108	54.8%	- 3	- 2.8%	197	- 15
Ystradgynlais (DY)	71	39	54.9%	50	51.5%	- 11	- 22.0%	97	- 26

Total Vehicle Crimes: September 2006 YTD

Sanction Detection Rate	Recorded Offences	Sanction Detections	Sanction Detection Rate	Sanction Detections	Sanction Det Rate	Diff in Number of S Dets	% Change in No of S Dets.	Recorded Offences	Diff in Number
THE FORCE	1,026	176	17.2%	141	13.7%	+ 35	+ 24.8%	1,027	- 1
Carmarthenshire	388	63	16.2%	49	11.6%	+ 14	+ 28.6%	424	- 36
Amman/Towy (AW)	80	9	11.3%	9	14.8%	=	=	61	+ 19
Carmarthen Town (AC)	38	6	15.8%	2	5.4%	+ 4	+ 200.0%	37	+ 1
Carmarthen Rural (AY)	35	6	17.1%	5	14.3%	+ 1	+ 20.0%	35	=
Gwendraeth (AT)	76	15	19.7%	11	14.3%	+ 4	+ 36.4%	77	- 1
Llanelli Town (AL)	93	16	17.2%	15	10.5%	+ 1	+ 6.7%	143	- 50
Llanelli Rural (AZ)	66	11	16.7%	7	9.9%	+ 4	+ 57.1%	71	- 5
Ceredigion	139	44	31.7%	21	18.8%	+ 23	+ 109.5%	112	+ 27
Ceredigion North (BA)	52	5	9.6%	9	15.8%	- 4	- 44.4%	57	- 5
Ceredigion South (BS)	87	39	44.8%	12	21.8%	+ 27	+ 225.0%	55	+ 32
Pembrokeshire	268	28	10.4%	37	14.1%	- 9	- 24.3%	262	+ 6
Fishguard (CF)	37	3	8.1%	3	8.3%	=	=	36	+ 1
Haverfordwest (CH)	47	5	10.6%	4	10.5%	+ 1	+ 25.0%	38	+ 9
Milford Haven (CM)	51	3	5.9%	9	24.3%	- 6	- 66.7%	37	+ 14
Pembroke Dock (CP)	59	5	8.5%	8	11.8%	- 3	- 37.5%	68	- 9
Tenby (CT)	74	12	16.2%	13	15.7%	- 1	- 7.7%	83	- 9
Powys	231	41	17.7%	34	14.8%	+ 7	+ 20.6%	229	+ 2
Brecon (DB)	57	8	14.0%	5	7.6%	+ 3	+ 60.0%	66	- 9
Llandrindod Wells (DL)	36	8	22.2%	5	13.5%	+ 3	+ 60.0%	37	- 1
Newtown (DN)	69	18	26.1%	8	14.5%	+ 10	+ 125.0%	55	+ 14
Welshpool (DW)	34	3	8.8%	12	27.3%	- 9	- 75.0%	44	- 10
Ystradgynlais (DY)	35	4	11.4%	4	14.8%	=	=	27	+ 8

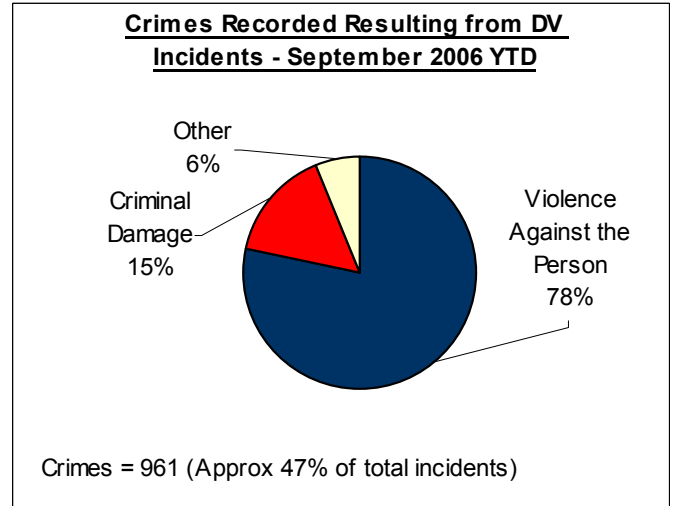
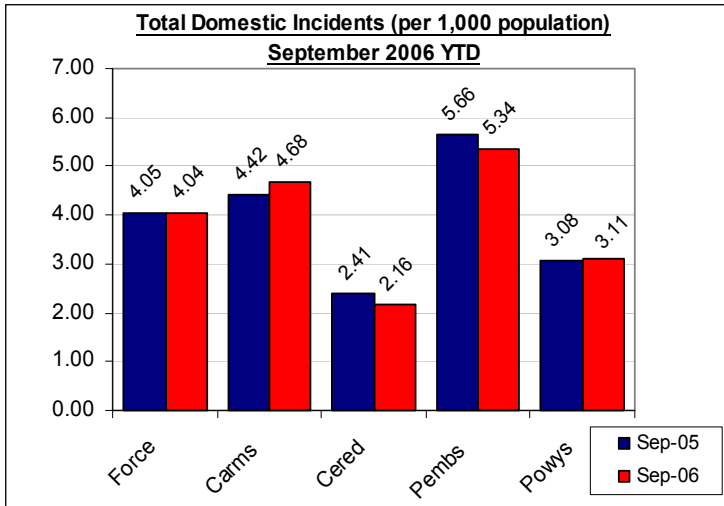
Domestic Incidents

DYFED POWYS POLICE

SPI 8A TARGET -38% OF INCIDENTS WITH AN ARREST MADE

LOCAL TARGET – 25 % OF TOTAL INCIDENTS INVOLVING REPEAT VICTIMS

Please note figures provided here are reliant on force systems being updated and remain **provisional only**. For the latest detailed information please contact your local Public Protection Unit (PPU) for further details.



Section & Divisional Summary – September 2006 YTD

Section	Incidents Total Incidents	Total Arrest Rate		Crimes & Sanction Detections			Repeat Victims % Repeats (12mnths data)**	Sep 2005 (SPLY)	
		Arrests	Total Arrest Rate	Crimes	% Sanction Detection Rate	Arrest Rate for Crimes		Total Incidents	Annual % Change
Ammanford/Towy (AW)	152	67	44.1%	72	44.4%	72.2%	19.4%	121	25.6%
Carmarthen (AC)	98	42	42.9%	44	45.5%	72.7%	17.6%	98	0.0%
Carmarthen Rural (AY)	81	32	39.5%	34	38.2%	76.5%	13.9%	62	30.6%
Gwendraeth (AT)	160	67	41.9%	66	65.2%	77.3%	21.8%	151	6.0%
Llanelli (AL)	180	77	42.8%	96	50.0%	66.7%	22.9%	213	-15.5%
Llanelli Rural (AZ)	160	70	43.8%	60	51.7%	78.3%	22.7%	140	14.3%
Carmarthenshire	831	355	42.7%	372	50.3%	73.1%	20.5%	785	5.9%
Ceredigion North (BN)	88	49	55.7%	50	44.0%	86.0%	14.0%	109	-19.3%
Ceredigion South (BS)	81	47	58.0%	45	46.7%	82.2%	17.1%	79	2.5%
Ceredigion	169	96	56.8%	95	45.3%	84.2%	15.4%	188	-10.1%
Fishguard (CF)	75	44	58.7%	42	50.0%	83.3%	24.2%	87	-13.8%
Haverfordwest (CH)	113	56	49.6%	61	47.5%	65.6%	26.2%	157	-28.0%
Milford Haven (CM)	164	68	41.5%	73	58.9%	75.3%	25.0%	167	-1.8%
Pembroke Dock (CP)	186	92	49.5%	75	54.7%	81.3%	29.8%	161	15.5%
Tenby (CT)	88	32	36.4%	37	43.2%	67.6%	13.7%	92	-4.3%
Pembrokeshire	626	292	46.6%	288	52.1%	75.0%	25.3%	664	-5.7%
Brecon (DB)	79	40	50.6%	39	61.5%	84.6%	13.8%	87	-9.2%
Llandrindod Wells (DL)	80	33	41.3%	41	41.5%	73.2%	16.2%	75	6.7%
Newtown (DN)	150	81	54.0%	77	41.6%	88.3%	27.4%	127	18.1%
Welshpool (DW)	53	28	52.8%	27	59.3%	85.2%	19.6%	65	-18.5%
Ystradgynlais (DY)	45	20	44.4%	22	72.7%	86.4%	12.4%	48	-6.3%
Powys	407	202	49.6%	206	51.0%	84.0%	19.8%	402	1.2%
Force	2033	945	46.5%	961	50.5%	77.1%	21.4%	2039	-0.3%

Source: LCS Recorded Domestic Incident Details (all data extracted 03/10/06).

** Repeat Victims performance is based on 12-months total incident data and not fiscal year-to-date and includes **all victims** – not only those involving both the same victim **and** offender.

The introduction of the Serious Organised Crime and Police Act 2005 (SOCPA) on 01/01/06 has resulted in the withdrawal of the term 'power of arrest'. As a consequence of this it has ceased to be a discrete performance measure.

User Satisfaction

CITIZEN FOCUS PERFORMANCE ASSESSMENT DOMAIN

MARCH 2006 DATA – LATEST

These measures constitute the citizen focus domain in the police performance assessment framework. All victims of crimes (domestic burglary, violent crime and vehicle crime only) or those involved in road traffic collisions are surveyed within a short period of coming into contact with the force to gain their views on the service they received.

For performance assessment purposes, these measurements of user satisfaction are grouped into five main theme:

- SPI 1a – Satisfaction with making contact with the police: 'Ease of Contact' **(2005/06 TARGET 92%)**
- SPI 1b – Satisfaction with the action taken by the police: 'Actions' **(2005/06 TARGET 84%)**
- SPI 1c – Satisfaction with being kept informed of progress: 'Follow-Up' **(2005/06 TARGET 70%)**
- SPI 1d – Satisfaction with their treatment by staff: 'Treatment' **(2005/06 TARGET 92%)**
- SPI 1e – Satisfaction with the overall service provided: 'Whole Experience' **(2005/06 TARGET 85%)**

Force User Satisfaction – Year Ending March 2006

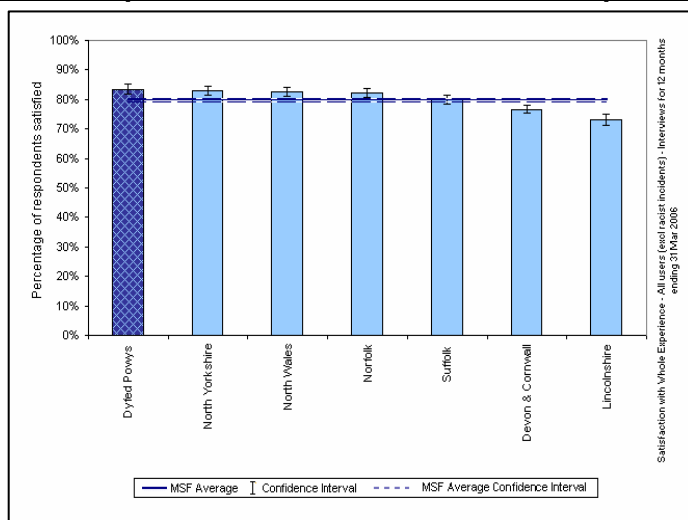
Comparative User Satisfaction 2005/06

Those persons completely, very or fairly satisfied.

Satisfaction with...	DPP Force	MSF Average	Difference
Ease of Contact	91.4%	89.6%	+1.8%
Actions	82.5%	76.7%	+5.8%
Follow-up	70.3%	63.5%	+6.8%
Treatment	90.7%	90.1%	+0.6%
Whole experience	83.5%	79.9%	+3.6%

Source: Home Office / Iquanta, September 2006

MSF – Comparative Force Performance - Whole Experience



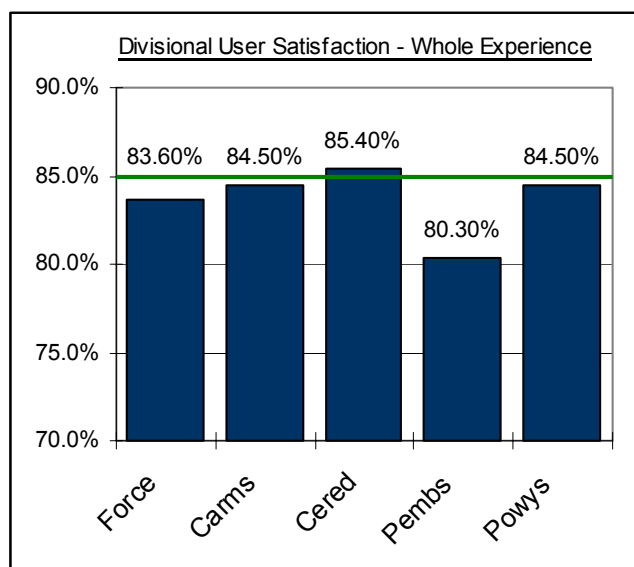
Source: Home Office / Iquanta, September 2006

Divisional User Satisfaction – Year Ending March 2006 (Apr 05 – Mar 06)

BCU user Satisfaction Summary 2005/06

Year Ending March 2006	% Satisfied (Very, Completely and Fairly Satisfied)					Target
	Force	Carms	Cered	Pembs	Powys	
Ease of Contact	91.4%	91.1%	93.9%	91.3%	91.9%	92%
Actions	82.5%	83.5%	84.0%	78.9%	83.6%	84%
Follow-up	70.3%	70.8%	73.1%	66.2%	70.8%	70%
Treatment	90.7%	90.3%	94.5%	88.3%	91.7%	92%
Whole experience	83.5%	84.3%	85.8%	79.2%	84.7%	85%

Source: Home Office / Iquanta, September 2006



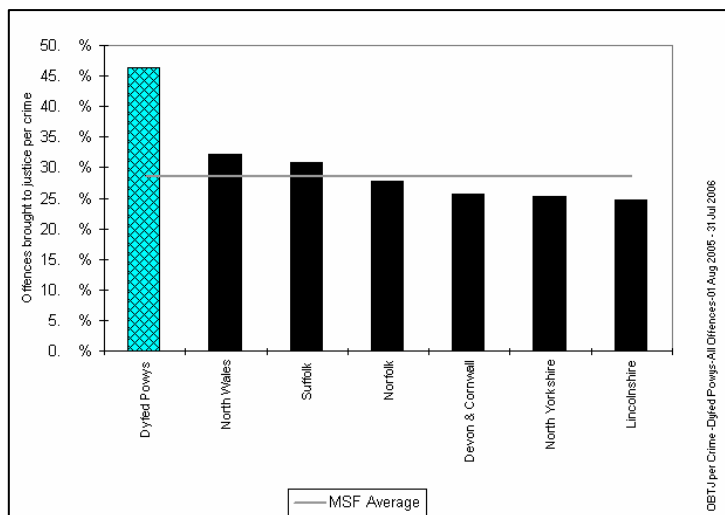
Additional comparative data is available on a quarterly basis. For further information on this or Iquanta contact Corporate Services (ext 6654).

Narrowing the Justice Gap - OFFENCES BROUGHT TO JUSTICE & SANCTION DETECTIONS

TARGET 2006/07 : Force Target - 11,068 / Home Office objective - 10,655 total OBTJ (Offences Brought to Justice)

Total Offences Brought to Justice (OBTJ) – Force & MSF Comparisons

OBTJ – 12 monthly data	TIC	PND	F. Warnings	Cautions	Convictions	OBTJ
Baseline: Apr 01 – Mar 02	420	-	-	3,698	6,900	11,068
Latest Annual Data : August 05 – July 06	364	906	1,338	5,011	6,222	13,841
Change	-13%	-	-	+36%	-10%	+25%
2005/06 Force Target (0%- 11,068 OBTJ)	NO	n/a	YES	YES	NO	YES



OBTJ By Offence Type : Latest Local Criminal Justice Board Comparator Tool – Year Ending May 2006. (MSA = Most Similar Area)

Comparison of LCJB performance against MSA group by crime type (based on LCJB crime mix)						
Dyfed-Powys	May-06					
Comparison with MSA	Convictions	Cautions	TICs	PNDs	FW	OBTJs
Dyfed-Powys	21%	85%	-13%	-4%	27%	34%
Burglary	102 (82%)	76 (179%)	20			197 (77%)
Criminal Damage	302 (58%)	509 (125%)	17	31		858 (77%)
Drug Offences	-94 (-9%)	309 (61%)	-6		268	477 (19%)
Fraud and Forgery	123 (41%)	136 (221%)	-17			242 (51%)
Other Offences	148 (47%)	92 (171%)	-3			237 (64%)
Robbery	23 (202%)	2 (371%)	0			25 (206%)
Sexual Offences	12 (10%)	16 (137%)	-43			-15 (-9%)
Shop Lifting	36 (7%)	159 (56%)	-5	-57		133 (13%)
Theft and Handling	349 (89%)	282 (154%)	-23			608 (87%)
VAP	89 (5%)	626 (59%)	0	-8		708 (20%)
Total	1,090	2,207	-61	-34	268	3,470

Key

High rate - LCJB higher than MSA by greater than 10%
Middle rate - Difference between LCJB & MSA between -10% and 10%
Low rate - LCJB lower than MSA by more than 10%

Cell values indicate (as a proportion) the difference between the number of disposals that the LCJB achieves against what its MSA group would expect to achieve on the same crime mix and number of crimes. A positive value indicates the LCJB is obtaining more disposals of this type than expected when compared with their MSA group.

For further information and guidance on improving performance, please read the following reports: PND Review, TIC Review, Cautions Review. These documents can be found on JPIT: <https://www.jpit.cjmis.gov.uk> under Central Reports/OBTJ Comparator Tool UserGuide. For login access to JPIT please contact Walton Edwards: (020 7035 8635) jpit@cjs.gsi.gov.uk

Sanction Detection Volume Performance YTD – Current Clear-Up Breakdown (Annual % Change)

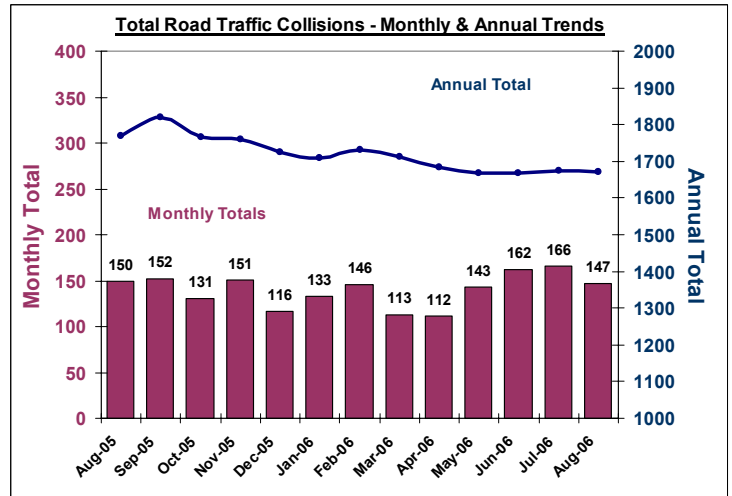
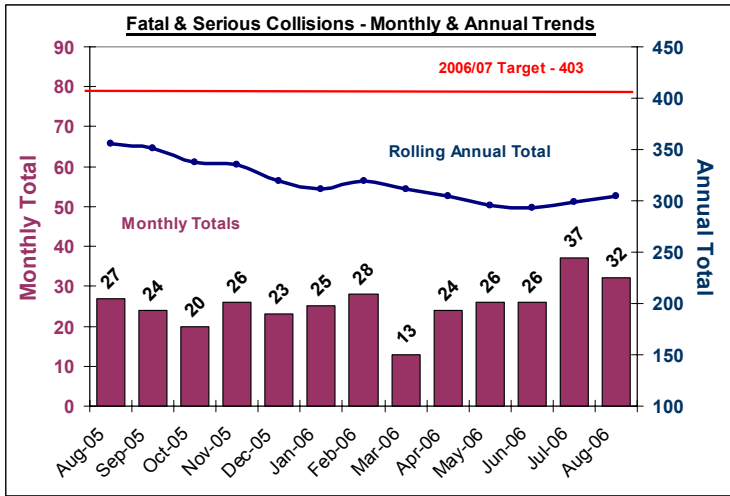
Area – September YTD	Charged	Summons	Cautioned	TIC	PND	F. Warning for Cannabis	Total Sanction Dets
Carmarthenshire	1022(+2%)	24 (-17%)	903 (+44%)	115 (+39%)	154 (+10%)	262 (+20%)	2479 (+18%)
Ceredigion	447 (+7%)	10 (-71%)	375 (+21%)	39 (22 SPLY)	52 (19 SPLY)	52 (-26%)	975 (+12%)
Pembrokeshire	622 (-2%)	12 (-54%)	732 (+33%)	20 (-81%)	113 (+35%)	49 (-45%)	1548 (+4%)
Powys	570 (-17%)	19 (-70%)	607 (+24%)	11 (-85%)	146 (+17%)	181 (64 SPLY)	1534 (+2%)
Force	2667 (-3%)	65 (-58%)	2617 (+33%)	185 (-34%)	465 (+26%)	544 (+23%)	6536 (+10%)

Road Traffic Collisions / Casualties

August Monthly Data Latest available

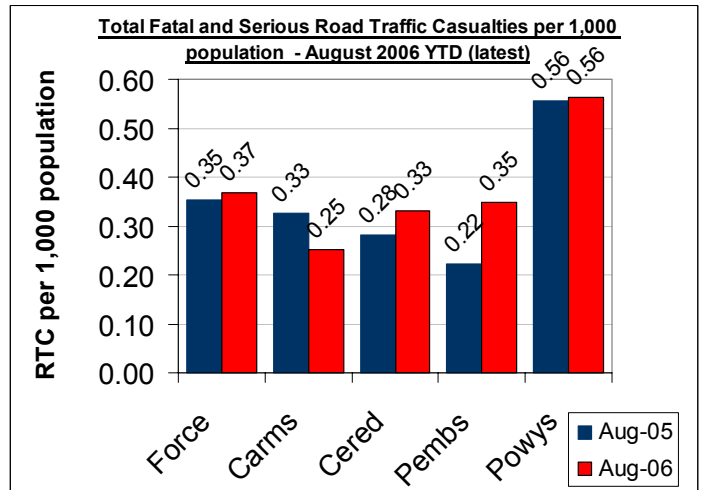
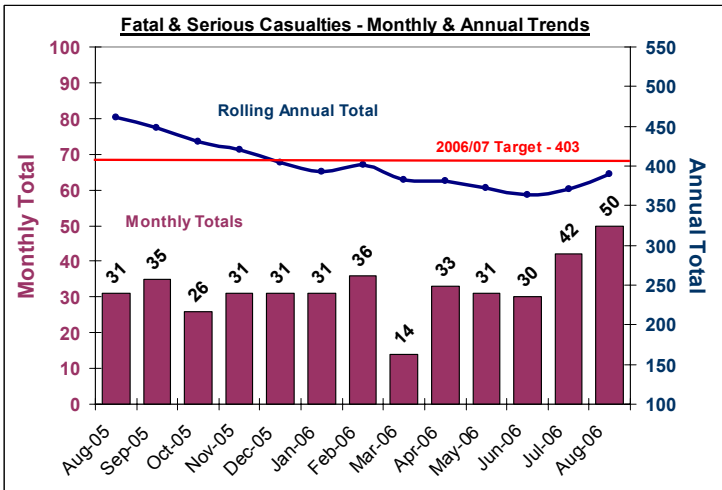
TARGET 2006/07: 403 FATAL AND SERIOUS COLLISIONS & CASUALTIES (0.8 PER 1,000 POPULATION)

COLLISIONS : Road Traffic Collisions – Monthly & Annual Trends (Aug 06 – latest)



Performance YTD (August 2006 YTD - latest)	FORCE	Carms	Cered	Pembs	Powys
Fatal Road Collisions YTD	25	7	1	2	15
Serious & Fatal Road Collisions YTD	145	37	21	31	56
Indicator - Per 1,000 population	0.29	0.21	0.27	0.26	0.43
On-Target (0.8 end of year – 0.33 pro rata)	YES	YES	YES	YES	NO
Fatal (SPLY)	19	9	2	2	6
Serious & Fatal (SPLY)	152	47	21	22	62

CASUALTIES: Road Traffic Casualties – 2010 Target Progress



August 2006 YTD (latest)	Force	Carms	Cered	Pembs	Powys
Number of people killed or seriously injured casualties	186	45	26	41	74
At 2010 Target Level*	YES	YES	YES	YES	YES
Number of Children (<=15 yrs) killed or seriously injured	19	6	6	3	4
At 2010 Target Level*	YES	YES	YES	YES	YES
Number of persons with slight injuries	926	313	117	224	272
At 2010 Target Level*	NO	NO	NO	NO	NO

* 2010 Targets Established with Roads Policing Strategy, Operations Dept & National Road Policing Targets. Progress towards Pro-Rata year-end 2010 target illustrated here

Source: MAAP RTC Database 06/10/06

Road Policing Performance

SELECTED MEASURES OF ROADS POLICING ACTIVITY 2006/07

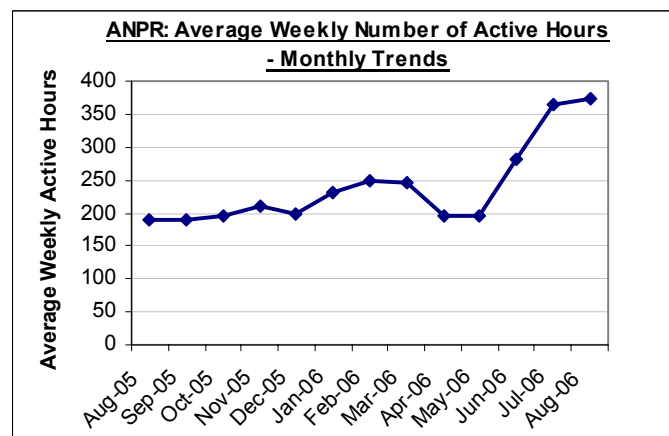
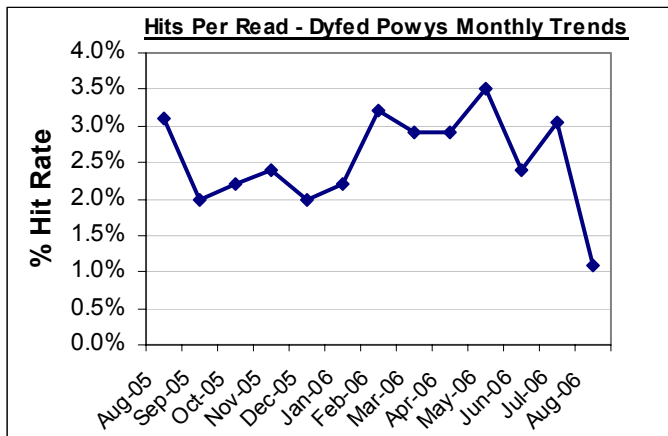
These measures constitute a range of selected measures to illustrate performance with respect to roads policing. The measures are:

- BCU Breakdown of ANPR Performance
- Vehicle Seizures – by reason for seizure
- S.59 Seizure of Vehicles Used in an Anti-Social Manner

BCU Breakdown of ANPR Performance (latest Aug 2006)

Covering the period: 01/04/2006 – 31/08/2006	Force	Carms	Cered	Pembs*	Powys	Ports/Other
ANPR Reads	748018	94055	53836	234199	282486	83442
ANPR Hits	16896	1364	1524	2695	10246	1067
Arrests	148	6	10	0	121	0
Total No. Operational Hours	5642	370	630.9	599.5	2484.3	1557.5
% Hits from Reads	2.3%	1.5%	2.8%	1.2%	3.6%	1.3%
Hits per Operational Hour	3.0	3.7	2.4	4.5	4.1	0.7

* - June Data not available for Pembs



Vehicle Seizures / Recovered (Apr-Sept 2006)

Reason for Seizure/Recovery	Number	%
Road Traffic Collision	1572	67.8
No Insurance/Licence (sect 165)	265	11.4
Stolen/Abandoned	131	5.7
Used In Crime	124	5.4
Obstruction/Danger	115	5.0
Abandoned	37	1.6
Owner Request	16	0.7
Prisoners Vehicle	21	0.9
Other Reason	36	1.5
Total	2317	

Source: VMU September 2006

S.59 Seizure of Vehicles Used in an Anti-Social Manner

April 2006 – September 2006	Number of Incidents YTD				
	Force	Carms	Cered	Pembs	Powys
Seized (+ SPLY)	2 (2)	0 (0)	0 (0)	2 (1)	0 (1)
Warned (+ SPLY)	15 (19)	2 (1)	0 (7)	11 (9)	2 (2)

Source: STORM Command & Control 04 October 2006

Local Policing Domain – Force Summary

2006/07: LOCAL POLICING DOMAIN – LOCAL PRIORITIES AND TARGETS

These priorities constitute a range of selected priorities to illustrate performance within the Local Policing Domain for 2006/07. These are:

- Terrorism and Domestic Extremism:** Objective – To support the wider national endeavour in protecting the country from terrorism and domestic extremism.
- Class A Drugs :** Objective – To proactively target and disrupt Class A drug supply and distribution networks across and beyond the Force area
- Violent Crime :** Objective - To reduce levels of violent crime and seek to increase detection rates in this area.
- Anti-Social Behaviour :** Objective - To proactively tackle anti-social behaviour in conjunction with partners, providing greater reassurance to the public.

Measure	Targets		FORCE	CARMS	CERED	PEMBS	POWYS
Terrorism & Domestic Extremism							
<i>National Theme - not appropriate to set local measures</i>							
Class-A Drugs							
Number of Class-A drug offenders charged with trafficking	To increase the numbers of offenders charged by 10%	Apr-Sep 2006	54	22	11	17	4
		Apr-Sep 2005	39	13	6	13	7
		Difference	+15	+9	+5	+4	-3
		% Change	38.5%	69.2%	83.3%	30.8%	-42.8%
Number of Class-A drug offences resulting in an offence brought to justice	To increase the numbers brought to justice by 10%	Aug 05 – Jul 06	58	Data Not Available below Force Level at Present			
		Aug 04 – Jul 05	74				
		Difference	-16				
		% Change	-21%				
Violent Crime							
Number of incidents involving victims of domestic violence who have been a victim in more than one incident in the previous 12-months (same offender involved)	To reduce the number of repeat incidents by 7%		FORCE	CARMS	CERED	PEMBS	POWYS
		Apr-Sep 2006	770	286	55	281	148
		Apr-Sep 2005	856	283	65	345	163
		Difference	-86	+3	-10	-64	-15
		% Change	-10.0%	+1.1%	-15.4%	-18.6%	-9.2%
The Proportion of violent crime offences resulting in a sanction detection	To attain a detection rate of 58% (sanction detections)						
		Sanction Detection Rate	55.5%	58.0%	49.1%	54.7%	56.1%
Anti-Social Behaviour							
The number of Anti-Social Behaviour incidents reported to the police	To reduce the number of recorded incidents by 5%	Apr-Sep 2006	14655	5235	1737	4285	3281
		Apr-Sep 2005	14044	5254	1851	3874	2974
		Difference	+611	-19	-114	+411	+307
		% Change	4.4%	-0.4%	-6.2%	10.6%	10.3%
The number of recorded Criminal Damage offences	To reduce the number of recorded offences by 3%	Apr-Sep 2006	3963	1374	494	1142	953
		Apr-Sep 2005	3956	1388	558	1145	865
		Difference	+7	-14	-64	-3	+88
		% Change	+0.2%	-1.0%	-11.5%	-0.3%	10.2%

* Sanction detections are those offences resulting in a charge, summons, caution, taken into consideration at court, or where the offence results in a penalty notice for disorder or a formal warning for cannabis.

Local Policing Domain – Section Summary

2006/07: LOCAL POLICING DOMAIN – LOCAL PRIORITIES AND TARGET CONTRIBUTION

Section Breakdown: April – September 2006 YTD

Class A Drugs; Domestic Violence; Violent Crime

Section	Class A Drugs				Violent Crime				Violent Crime Proportion violent offences resulting in sanction det. (Target - 58%)
	No. offenders charged with trafficking	% Change (Target - To increase the numbers of offenders charged up 10%)	SPLY	Diff	No. DV Repeats (same offender)	% Change (Target - To reduce the number of repeat incidents by 7%)	Baseline Data: Apr 05 - Mar 06	Diff	
Amman/Towy (AW)	1	-83.3%	6	-5	52	13.0%	46	6	53.8%
Carmarthen (AC)	3	#DIV/0!	0	3	23	-17.9%	28	-5	58.3%
Carmarthen Rural (AY)	12	#DIV/0!	0	12	20	42.9%	14	6	47.7%
Gwendraeth (AT)	1	#DIV/0!	0	1	61	29.8%	47	14	40.8%
Llanelli (AL)	3	-57.1%	7	-4	75	-20.2%	94	-19	60.2%
Llanelli Rural (AZ)	2	#DIV/0!	0	2	55	1.9%	54	1	63.3%
CARMS	22	69.2%	13	9	286	1.1%	283	3	58.0%
Ceredigion North (BN)	9	125.0%	4	5	27	-30.8%	39	-12	48.1%
Ceredigion South (BS)	2	0.0%	2	0	28	7.7%	26	2	50.4%
CEREDIGION	11	83.3%	6	5	55	-15.4%	65	-10	49.1%
Fishguard (CF)	0	#DIV/0!	0	0	39	-18.8%	48	-9	52.7%
Haverfordwest (CH)	1	-87.5%	8	-7	57	-37.4%	91	-34	51.9%
Milford Haven (CM)	0	-100.0%	1	-1	68	-22.7%	88	-20	59.3%
Pembroke Dock (CP)	5	150.0%	2	3	99	13.8%	87	12	55.3%
Tenby (CT)	11	450.0%	2	9	18	-41.9%	31	-13	54.9%
PEMBS	17	30.8%	13	4	281	-18.6%	345	-64	54.7%
Brecon (DB)	1	#DIV/0!	0	1	20	-37.5%	32	-12	61.8%
Llandrindod Wells (DL)	1	#DIV/0!	0	1	22	-42.1%	38	-16	54.5%
Newtown (DN)	2	-50.0%	4	-2	74	57.4%	47	27	52.6%
Welshpool (DW)	0	-100.0%	3	-3	21	-22.2%	27	-6	57.7%
Ystradgynlais (DY)	0	#DIV/0!	0	0	11	-42.1%	19	-8	54.9%
POWYS	4	-42.9%	7	-3	148	-9.2%	163	-15	56.1%
FORCE	54	38.5%	39	15	770	-10.0%	856	-86	55.5%

Data for Class-A drug trafficking provisional – taken from force systems. The target for Sanction Detection Rate for Violent Crime is 58%. Any Section that is within 10% of this target is marked as reaching the target rate set.

Anti-Social Behaviour

Section	Anti-Social Behaviour				Anti-Social Behaviour			
	No. Anti-social Incidents	% change (Target - To reduce the number of recorded incidents by 5%)	SPLY	Diff	No. Criminal Damage Offences	% change (Target - To reduce the numbers of recorded Criminal Damage offences by 3%)	SPLY	Diff
Amman/Towy (AW)	913	-11.2%	1028	-115	270	15.4%	234	36
Carmarthen (AC)	645	-18.6%	792	-147	182	-15.3%	215	-33
Carmarthen Rural (AY)	499	-8.1%	543	-44	105	-5.4%	111	-6
Gwendraeth (AT)	892	3.7%	860	32	190	-14.8%	223	-33
Llanelli (AL)	1258	3.8%	1212	46	436	19.5%	365	71
Llanelli Rural (AZ)	1028	25.5%	819	209	191	-20.4%	240	-49
CARMS	5235	-0.4%	5254	-19	1374	-1.0%	1388	-14
Ceredigion North (BN)	918	-1.7%	934	-16	296	4.6%	283	13
Ceredigion South (BS)	819	-10.7%	917	-98	198	-28.0%	275	-77
CEREDIGION	1737	-6.2%	1851	-114	494	-11.5%	558	-64
Fishguard (CF)	548	28.0%	428	120	135	3.8%	130	5
Haverfordwest (CH)	944	21.0%	780	164	232	8.4%	214	18
Milford Haven (CM)	1128	5.8%	1066	62	285	16.3%	245	40
Pembroke Dock (CP)	942	8.4%	869	73	285	-19.9%	356	-71
Tenby (CT)	723	-1.1%	731	-8	205	2.5%	200	5
PEMBS	4285	10.6%	3874	411	1142	-0.3%	1145	-3
Brecon (DB)	780	-0.3%	782	-2	261	9.7%	238	23
Llandrindod Wells (DL)	637	-1.1%	644	-7	165	9.3%	151	14
Newtown (DN)	963	16.2%	829	134	311	15.2%	270	41
Welshpool (DW)	499	7.8%	463	36	169	29.0%	131	38
Ystradgynlais (DY)	402	57.0%	256	146	47	-37.3%	75	-28
POWYS	3281	10.3%	2974	307	953	10.2%	865	88
FORCE	14655	4.4%	14044	611	3963	0.2%	3956	7

PPAF Statutory Performance Indicator Summary

Reported Quarterly

HOME OFFICE POLICE PERFORMANCE ASSESSMENT FRAMEWORK MEASURES

This Data is Updated Quarterly – Latest: April 2005 – August 2006 (except where stated).

Activity	SPI Number	Indicator Description	2005/06 Performance	2006/07 Performance	Change	2006/07 End of Year Target
User Satisfaction Measures	1a^	Satisfaction of victims of domestic burglary, violent crime, vehicle crime and road traffic collisions with respect to - a) making contact with the Police	92.3%	93.8%	1.5%	93%
	1b^	b) action taken by the Police	87.5%	83.8%	-3.7%	85%
	1c^	c) Being kept informed of progress	74.4%	71.6%	-2.8%	75%
	1d^	d) Their treatment by staff	92.7%	91.8%	-0.9%	93%
	1e^	e) the overall service provided	85.6%	82.2%	-3.5%	86%
Confidence	2a^^	Using the BCS, the % of people who think their local police do a good job	57.5%	55.1%	-2.4%	56%
Fairness and Equality Measures	3a^	Satisfaction of victims of racist incidents with respect to the overall service provided	66.7%	80.0%	13.3%	86%
	3b^	From SPI 1(e), comparison of satisfaction for white users and users from visible minority ethnic groups with respect to the overall service provided.	White - 86.0% Ethnic - 83.3%	White - 82.4% Ethnic - 86.0%	White -3.6% Ethnic +2.7%	White - 86% Ethnic - 73%
	3c(i)^	(i) % of PACE stop/searches which lead to arrest by ethnicity	White - 15.4% Ethnic - 19.5%	White - 16.0% Ethnic - 41.2%	White +0.6% Ethnic -21.7%	White - 20% Ethnic - 20%
	3d^	Comparison of percentage detected of violence against the person offences by ethnicity of the victim (sanction detections)	White - 34.8% Ethnic - 24.2%	White - 47.4% Ethnic - 54.2%	White +12.6% Ethnic +30.0%	White - 35% Ethnic - 35%
	3e^	Proportion of police recruits (ethnic) compared to the proportion of people from minority ethnic groups in the economically active population (EAP).	0.0% of recruits 1.0% of EAP	0.0% of recruits 1.0% of EAP	-	1.0%
	3g^	% of female police officers compared to overall Force strength.	20.1%	21.4%	1.3%	20%
Measures of Crime Levels	4a^^	Using the British Crime Survey (a) the risk of personal crime; and	3.4%	3.0%	-0.4%	8%
	4b^^	(b) the risk of household crime.	12.1%	9.0%	-3.1%	11%
	5b*	(b) Violent crime per 1,000 population.	6.09 (3077 crimes)	6.39 (3230 crimes)	+0.3 (+153 crimes)	15.7 (7945 crimes)
	5e^	(e) Life threatening crime and gun crime per 1,000 population.	0.11 (56 crimes)	0.08 (39 crimes)	-0.03 (-17 crimes)	0.28
	5f*	(f) Acquisitive Crime per 1,000 population	2.27 (1149 crimes)	2.18 (1103 crimes)	-0.09 (-46 crimes)	6.5
Offences Brought to Justice Measures (OBTJ)	6b^	% of notifiable/recorded offences resulting in convictions, caution or taken into consideration at court	38.3%	42.1%	3.8%	38%
Detection Measure	7a*	% of notifiable/recorded offences resulting in charge, summons, caution or taken into consideration at court ('sanction detections')	34.7%	40.9%	6.2%	40%
Domestic Violence Measures	8a	Percentage of domestic violence incidents where an arrest was made relating to the incident.	34.4%	45.6%	11.2%	38%
Asset Seizure	8c	Value of cash forfeiture orders and confiscation orders per 1,000 population	NEW	NEW	NEW	£338,254
Traffic Measures	9a(i)^	(i) Number of people killed in under 30 days or seriously injured in road traffic collisions	113 fatal or serious casualties	93 fatal or serious casualties	-20 casualties	403 fatal or serious casualties
	9a(ii)^	(ii) Number of persons killed or seriously injured in road traffic collisions per 100million vehicle kilometres travelled.	2.29	1.88	-17.9%	8.13
Quality of Life Measures	10a^	Using the British Crime Survey a) fear of crime	7.2%	4.9%	-2.3%	10%
	10b^	Perceptions of anti-social behaviour; and	9.1%	8.3%	-0.8%	8%
	10c^	Perceptions of local drug use / drug dealing	22.8%	22.9%	0.1%	22%
Resource Use Measures	11a	Percentage of police officer time spent on frontline duties	N/A	N/A	-	70%
	12a	Delivery of cashable and non-cashable efficiency targets	NEW	NEW	-	3%
	13a^	Percentage of working hours lost due to sickness for police officers	NEW	2.65%	NEW	NEW
	13b^	Percentage of working hours lost due to sickness for police staff	NEW	3.74%	NEW	NEW
NEW PPAF DOMAIN						
Local Policing Domain	LP 1.1	No. of class A drug offenders charged with trafficking	27	53	96.3%	+10%
	LP 1.2**	No. of class A drug offences resulting in a conviction or caution, or which the offender has asked it to be taken into consideration at court.	11	5	-54.5%	+10%
	LP 2.1*	No. of incidents involving victims of domestic violence who have been a victim in more than one incident in the previous 12-months.	856	776	-9.3%	-7%
	LP 2.2*	% of violent crime detected (sanction detections)	45.7% (1,405)	56.9% (1,837)	+11.2% (+432 dets)	58%
	LP 3.1*	Number of incidents of anti-social behaviour reported to the police.	9175	9,708	5.8%	-5%
	LP 3.2*	Number of total criminal damage offences (exc HOC 56 and 59).	2,756	2,583	-6.3%	-3%

^ Latest data available for the period April-June 2006

^^ Latest data available for the period April 2005 -March 2006

* Latest data available for the period April-July 2006

** Latest data available for the period April-May 2006