



Heddlu Dyfed-Powys Police

CRIME TRENDS UPDATE January 2008

Contents:

Headline Statistics	2
Most Frequent Recorded Offences Profile	3
Recorded Crimes and Detection Rates	4
Domestic Burglaries and Detection Rates	5
Other Burglary and Detection Rates	6
Violent Crime and Detection Rates	7
Most Serious Violence Against a Person	8
Vehicle Crime and Detection Rates	9
Criminal Damage and Detection Rates	10
Drugs Statistics and Detection Rates	11
Section Level Sanction Detection Summary	12
Domestic Incidents	14
User Satisfaction	15
Narrowing the Justice Gap	16
Road Traffic Collisions	17
Roads Policing Performance	18
Local Policing Domain	19
Sickness Absence	21
Corporate Health Scorecard	22
PPAF Statutory Performance Indicator Summary	23

Heddlu Dyfed Powys Police: Corporate Services

Recorded Crime:

- Total Recorded Crime is down by 16% (-4,055 crimes) compared to the same period last year (SPLY) to stand at 21,763 crimes. The monthly figure for January 2008 stands at 1,686, a decrease of 26% (-591 offences) on the same month in 2007, and an 8% decrease (-155 offences) on the preceding month December 2007.
- The sanction detection rate stands at 43% - this is consistent with the target rate of 40% (and compared with 42% recorded last year). The volume of sanction detections has decreased by 1,635 sanction detections or 15%.

Domestic Burglary:

- Total Domestic Burglary offences are up by 1% (+8 crimes) compared to the same period last year (SPLY) to stand at 671 crimes. The monthly figure for January 2008 stands at 62, an increase of 38% (+17 offences) on the same month in 2007, and a 51% (+21 offences) increase on the preceding month December 2007.
- The sanction detection rate stands at 24% (compared with 33% last year) with the volume of sanction detections decreasing by 26% (-56 sanction detections).

Violent Crimes:

- Total Violent crime offences are down by 24% (-1,683 crimes) compared to the same period last year (SPLY) to stand at 5,449 crimes. The monthly figure for January 2008 stands at 388, a decrease of 30% (-162 offences) on the same month in 2007, and a 25% (-132 offences) decrease on the preceding month December 2007.
- The sanction detection rate stands at 59% (consistent with 59% last year) with the volume recorded down by 23% (-985 sanction detections).

Vehicle Crime:

- Total Vehicle crime is down by 5% (-88 crimes) compared to the same period last year (SPLY) to stand at 1,620 crimes. The monthly figure for January 2008 stands at 137, a decrease of 35% (-73 offences) on the same month in 2007, but a 4% increase (+5 offences) on the preceding month December 2007.
- The sanction detection rate stands at 21% (compared with 18% last year) with the volume up on the previous year (+26 sanction detections or 8%).

Criminal Damage:

- Total Criminal Damage is down by 16% (-1110 offences) compared to the same period last year (SPLY) to stand at 5,659. The monthly figure for January 2008 stands at 434, a decrease of 31% (-192 offences) on the same month in 2007, and a decrease of 16% (-81 offences) on the previous month December 2007.
- The sanction detection rate stands at 23% (compared with 23% last year) with the volume down 18% over this period (-276 sanction detections).

With effect from 1st April 2007, Non sanction detections will only be recognised for indictable only offences that specifically relate to D1 (Offender Dead) or D6 (Crown Prosecution Service decide not to prosecute).

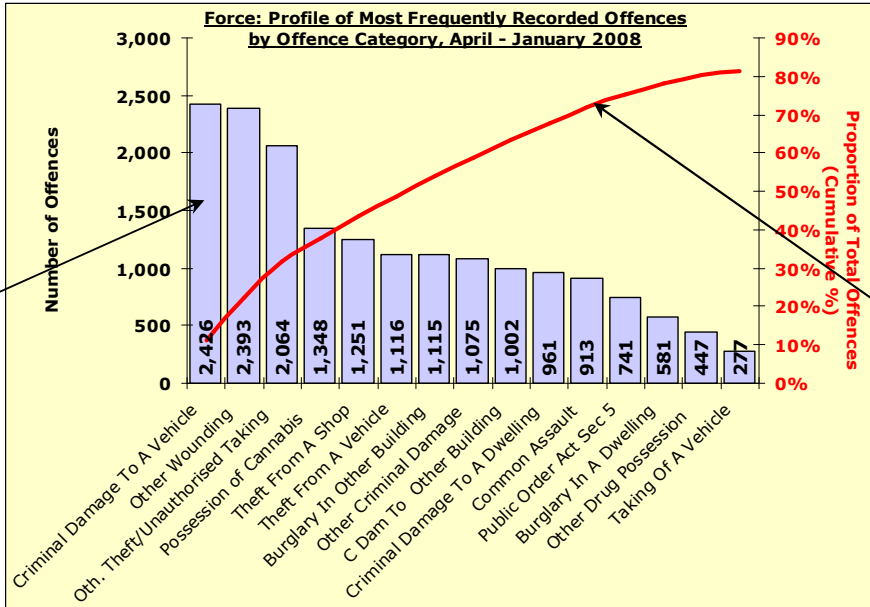
Source: Home Office Counting Rules (HOCR) for Crime Changes for 1 April 2007

As a result there will be great similarities between Total Detections and Sanction Detections. We will only be reporting on Sanction Detections in the Headline Statistics in future.

Most Frequent Recorded Offences Profile

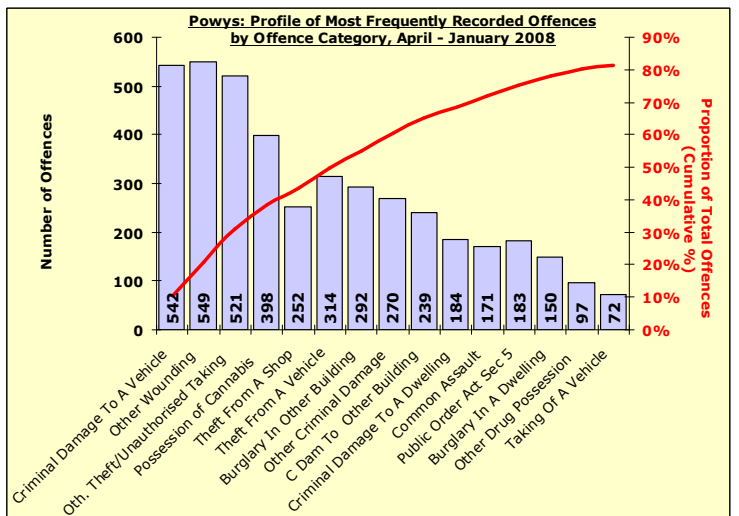
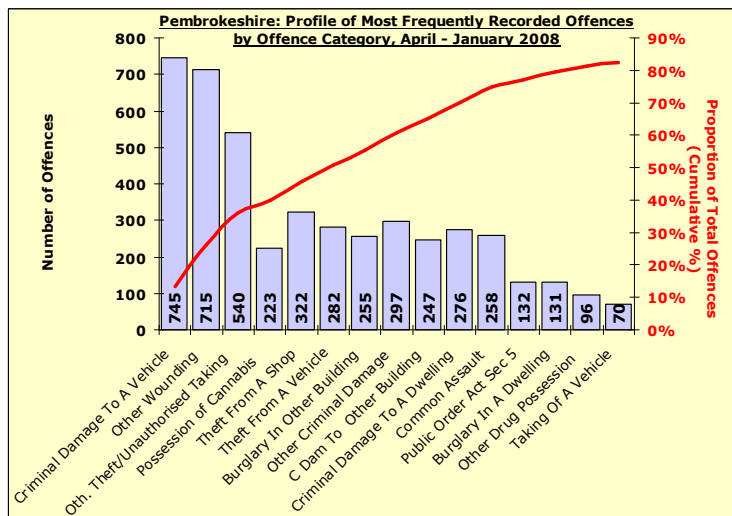
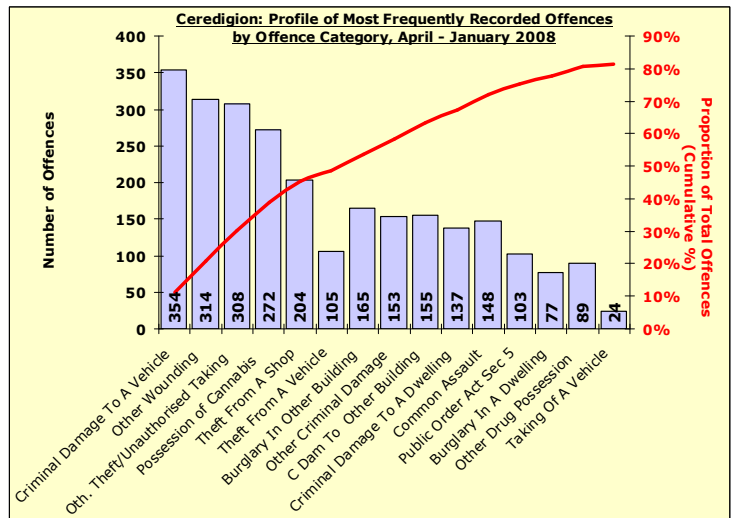
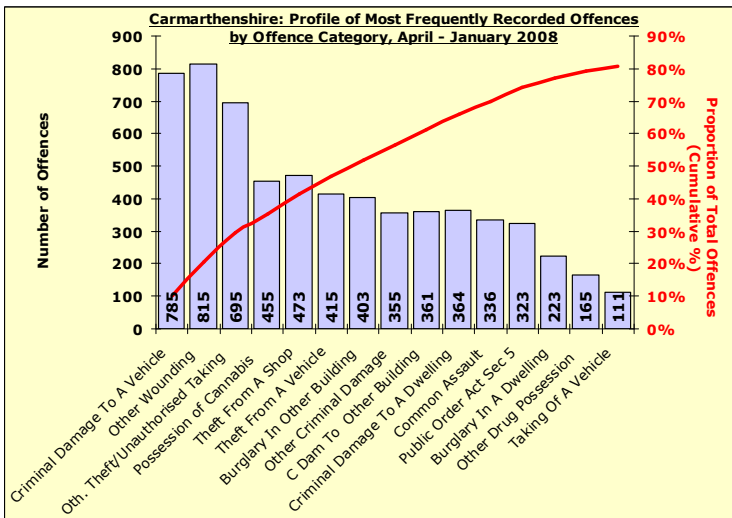
DYFED-POWYS POLICE

January 2008 YTD (Note : Divisional profiles are in the same sequence as forces' most frequent categories – for comparison)



Recorded offences in each category in order of volume.
(Note these can include a number of sub-categories)

The cumulative contribution of these offence categories toward the total volume of offences recorded.

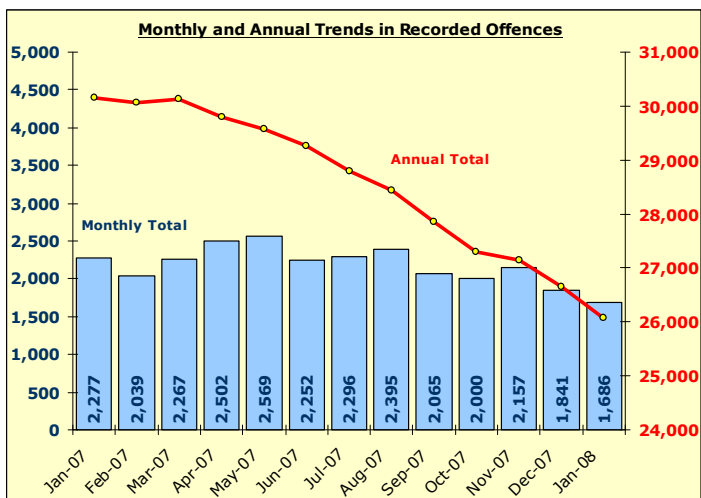


Total Recorded Crime

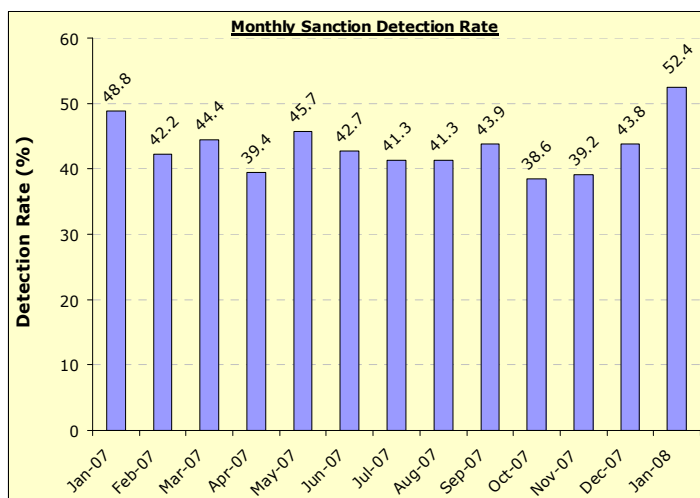
DYFED-POWYS POLICE

TARGET 2007/08 : NO REDUCTION TARGET – 40% SANCTION DETECTION RATE

Recorded Crime Levels – January 2008

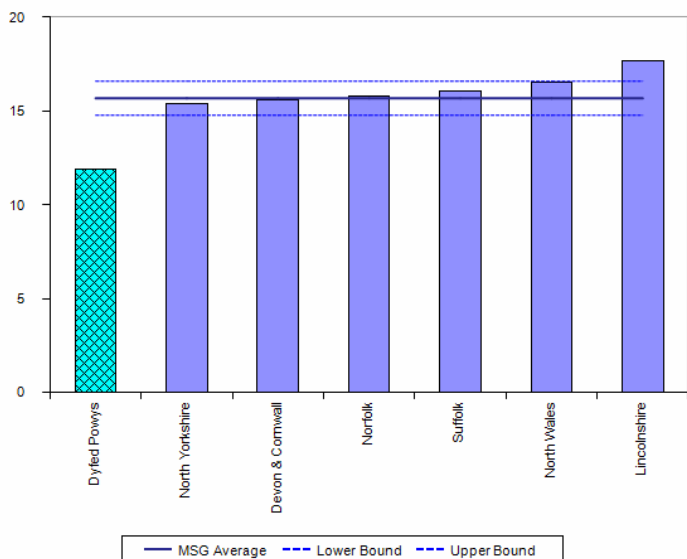


Monthly Sanction Detection Rates – January 2008

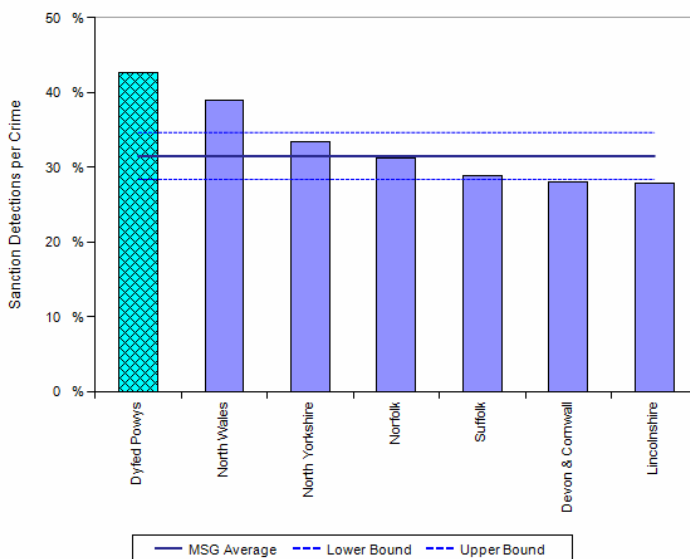


TOTAL ALL OFFENCES	YTD: Jan-08			Detection Rates YTD		Annual Trends SPLY		
	Recorded Offences	Sanction Detections	Total Detections	Sanction Detection Rate	Total Detection Rate	Recorded Offences	Diff in Number	% Change in Offences
THE FORCE	21,763	9,273	9,273	42.6%	42.6%	25,818	- 4,055	- 15.7%
Carmarthenshire	7,794	3,750	3,750	48.1%	48.1%	9,524	- 1,730	- 18.2%
Ceredigion	3,211	1,362	1,362	42.4%	42.4%	3,733	- 522	- 14.0%
Pembrokeshire	5,562	2,104	2,104	37.8%	37.8%	6,635	- 1,073	- 16.2%
Powys	5,196	2,057	2,057	39.6%	39.6%	5,926	- 730	- 12.3%

iQuanta Barchart MSG - Crimes per 1000 Residents
Dyfed Powys
All Crime
01 Oct 2007 - 31 Dec 2007



iQuanta Barchart MSG - Sanction Detections per Crime
Dyfed Powys
All Crime
01 Jan 2007 - 31 Dec 2007

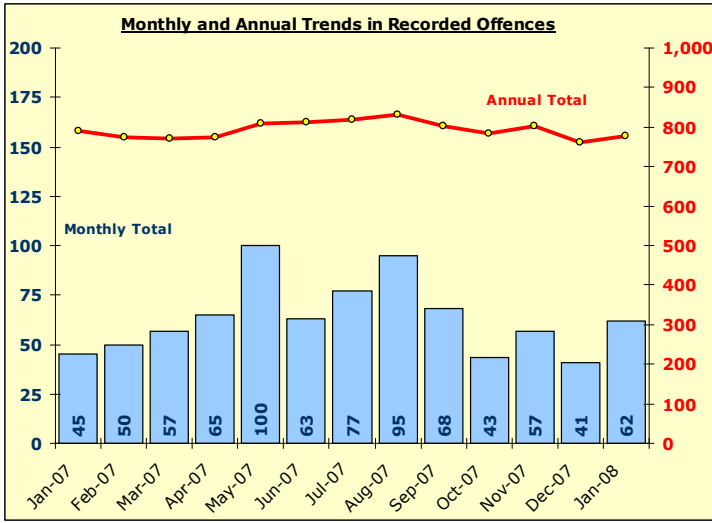


Domestic Burglary

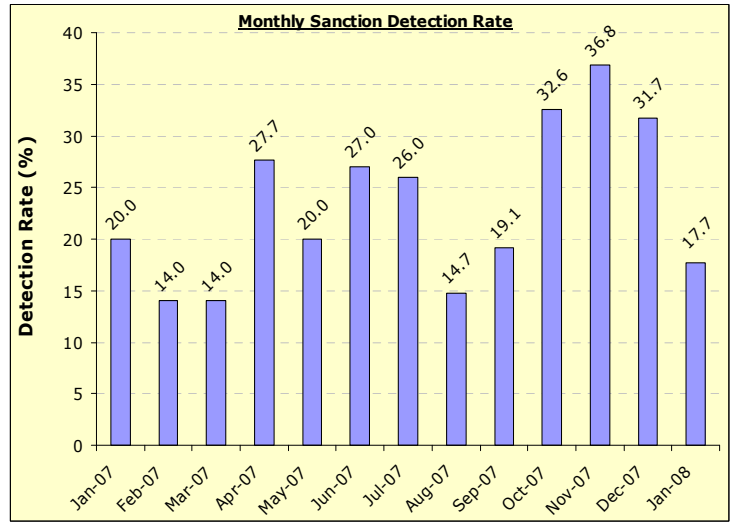
DYFED-POWYS POLICE

TARGET 2007/08: 2% Target Reduction as component of Total Acquisitive Crime (SPI 5f)

Recorded Crime Levels – January 2008

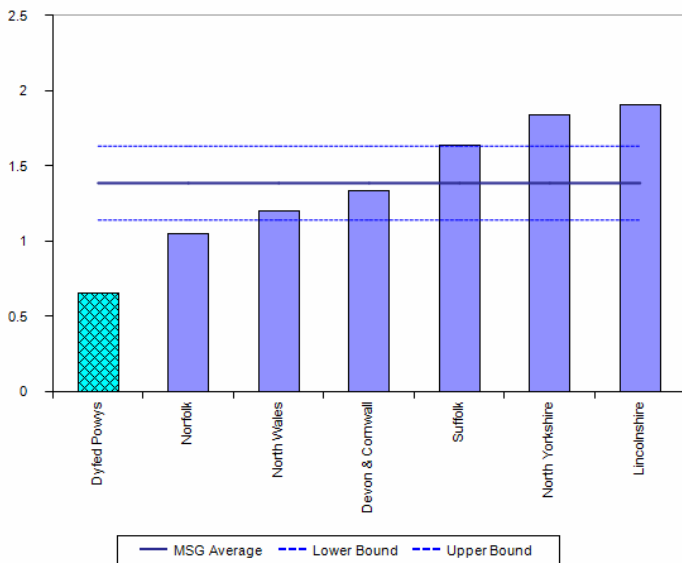


Monthly Sanction Detection Rates – January 2008

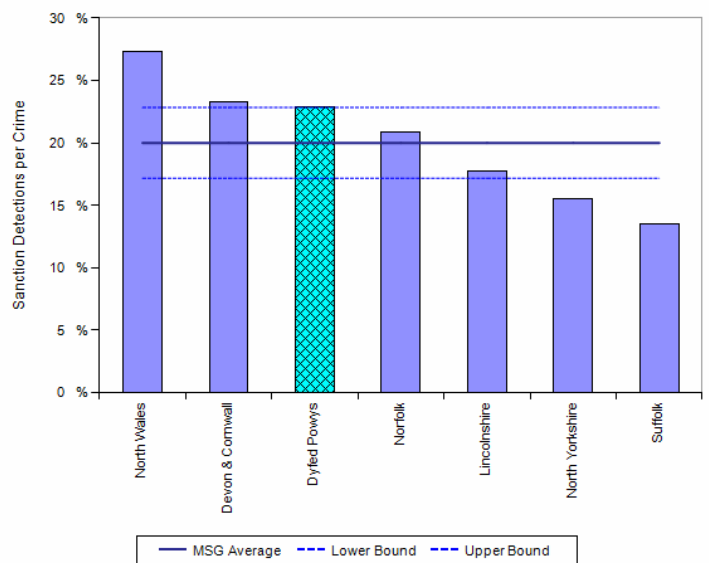


Total Domestic Burglary	YTD: Jan-08			Detection Rates YTD		Annual Trends SPLY		
	Recorded Offences	Sanction Detections	Total Detections	Sanction Detection Rate	Total Detection Rate	Recorded Offences	Diff in Number	% Change in Offences
THE FORCE	671	161	161	24.0%	24.0%	663	+ 8	+ 1.2%
Carmarthenshire	258	93	93	36.0%	36.0%	270	- 12	- 4.4%
Ceredigion	83	23	23	27.7%	27.7%	83	=	-
Pembrokeshire	154	25	25	16.2%	16.2%	159	- 5	- 3.1%
Powys	176	20	20	11.4%	11.4%	151	+ 25	+ 16.6%

iQuanta Barchart MSG - Crimes per 1000 Households
Dyfed Powys
Domestic Burglary
01 Oct 2007 - 31 Dec 2007



iQuanta Barchart MSG - Sanction Detections per Crime
Dyfed Powys
Domestic Burglary
01 Jan 2007 - 31 Dec 2007

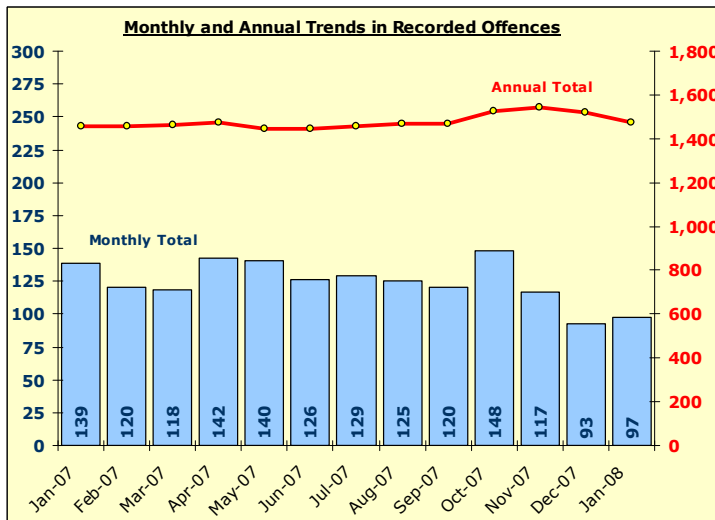


Other Burglary

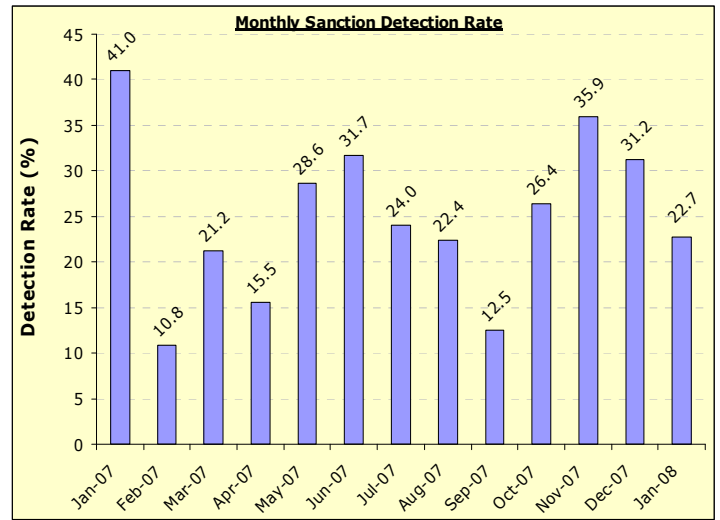
DYFED-POWYS POLICE

TARGET 2007/08: NO TARGET

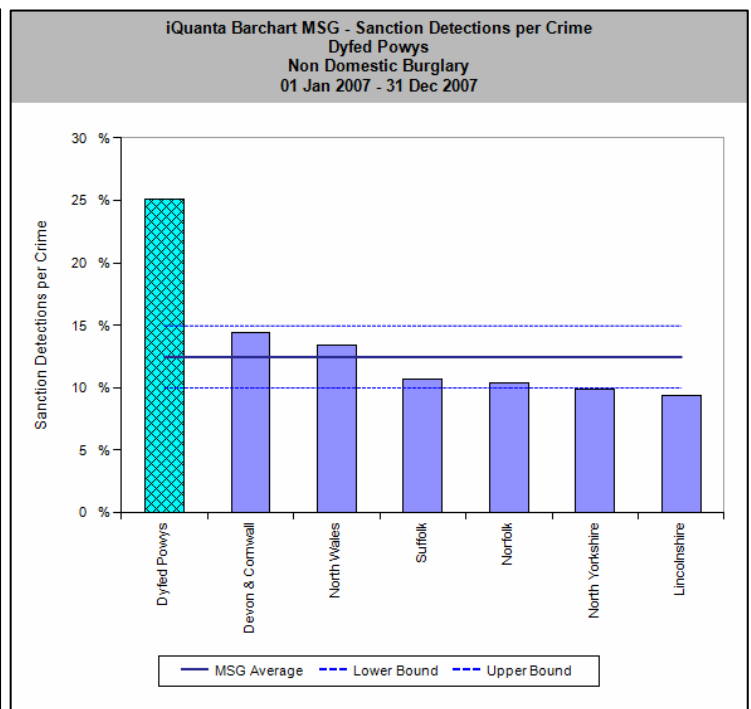
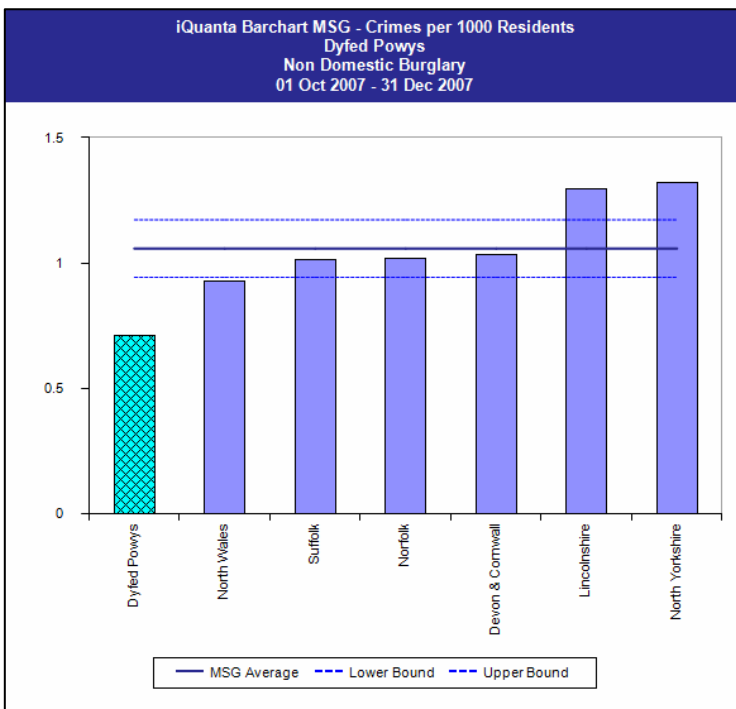
Recorded Crime Levels – January 2008



Monthly Sanction Detection Rates – January 2008



Total Other Burglary	YTD: Jan-08			Detection Rates YTD		Annual Trends SPLY		
	Recorded Offences	Sanction Detections	Total Detections	Sanction Detection Rate	Total Detection Rate	Recorded Offences	Diff in Number	% Change in Offences
THE FORCE	1,237	308	308	24.9%	24.9%	1,224	+ 13	+ 1.1%
Carmarthenshire	452	170	170	37.6%	37.6%	538	- 86	- 16.0%
Ceredigion	179	47	47	26.3%	26.3%	142	+ 37	+ 26.1%
Pembrokeshire	275	58	58	21.1%	21.1%	252	+ 23	+ 9.1%
Powys	331	33	33	10.0%	10.0%	292	+ 39	+ 13.4%

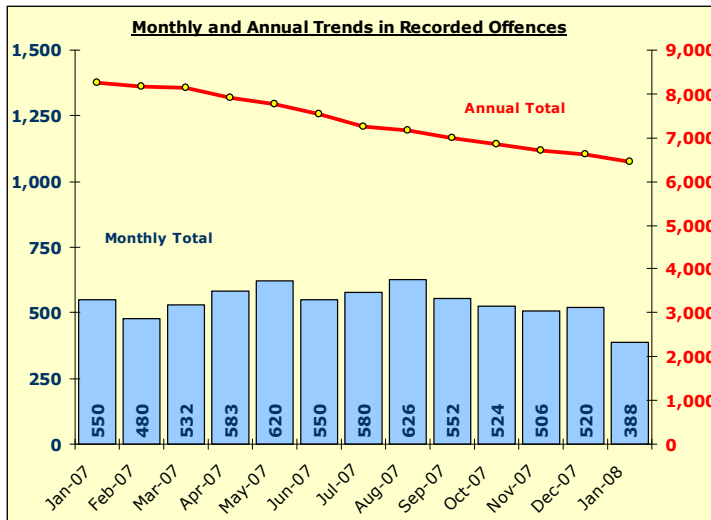


Total Violent Crime

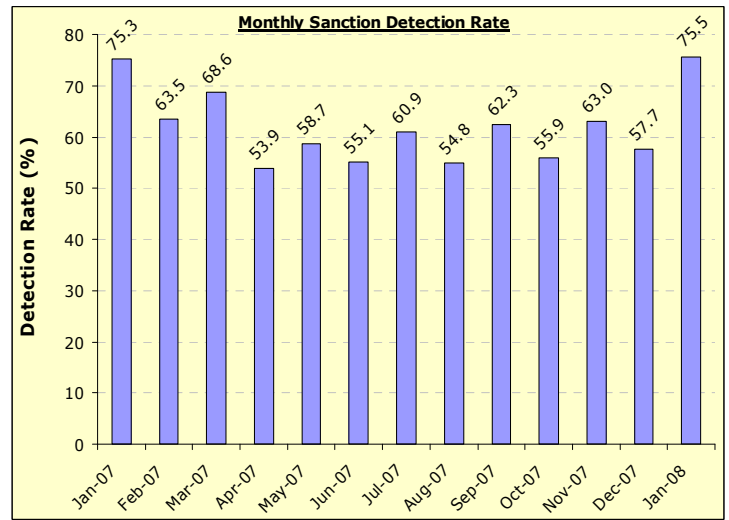
DYFED-POWYS POLICE

TARGET 2007/08 – 3% reduction in offences as part of SPI 5b

Recorded Crime Levels – January 2008

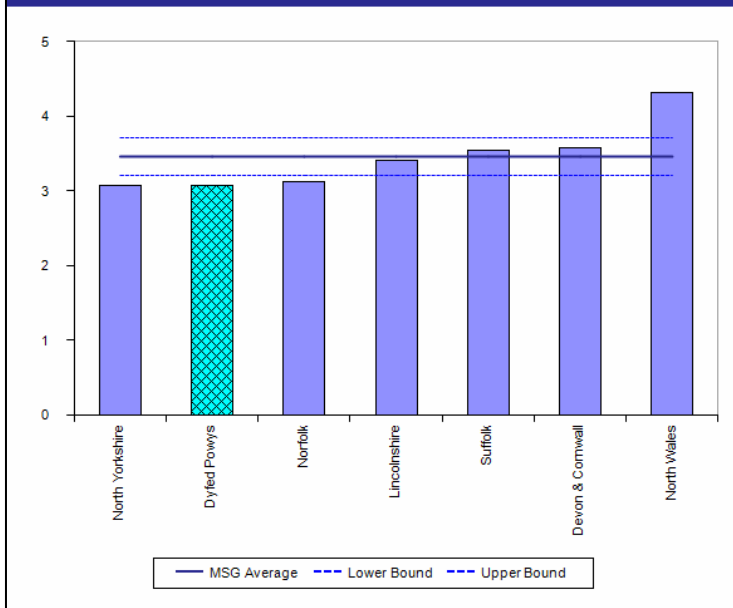


Monthly Sanction Detection Rates – January 2008

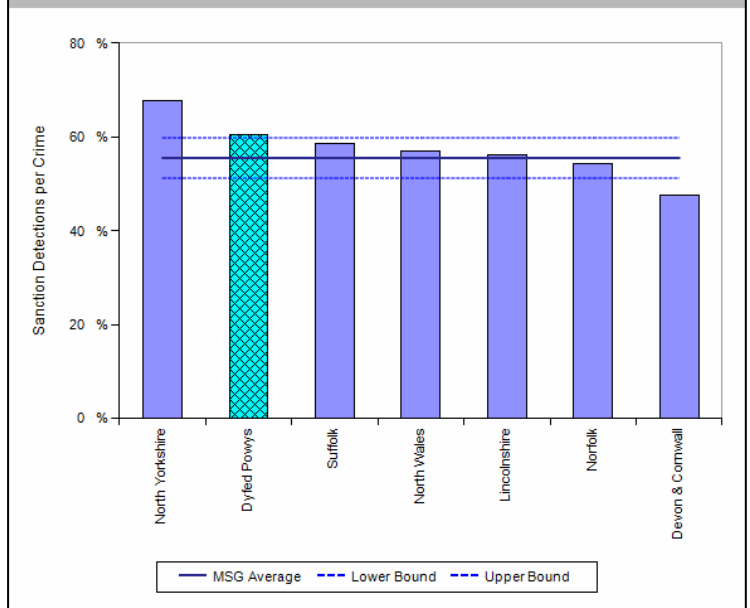


Total Violent Crime	YTD: Jan-08			Detection Rates YTD		Annual Trends SPLY		
	Recorded Offences	Sanction Detections	Total Detections	Sanction Detection Rate	Total Detection Rate	Recorded Offences	Diff in Number	% Change in Offences
THE FORCE	5,449	3,226	3,226	59.2%	59.2%	7,132	- 1,683	- 23.6%
Carmarthenshire	2,013	1,221	1,221	60.7%	60.7%	2,634	- 621	- 23.6%
Ceredigion	787	427	427	54.3%	54.3%	972	- 185	- 19.0%
Pembrokeshire	1,427	804	804	56.3%	56.3%	1,880	- 453	- 24.1%
Powys	1,222	774	774	63.3%	63.3%	1,646	- 424	- 25.8%

iQuanta Barchart MSG - Crimes per 1000 Residents
Dyfed Powys
Violent Crime
01 Oct 2007 - 31 Dec 2007



iQuanta Barchart MSG - Sanction Detections per Crime
Dyfed Powys
Violent Crime
01 Jan 2007 - 31 Dec 2007

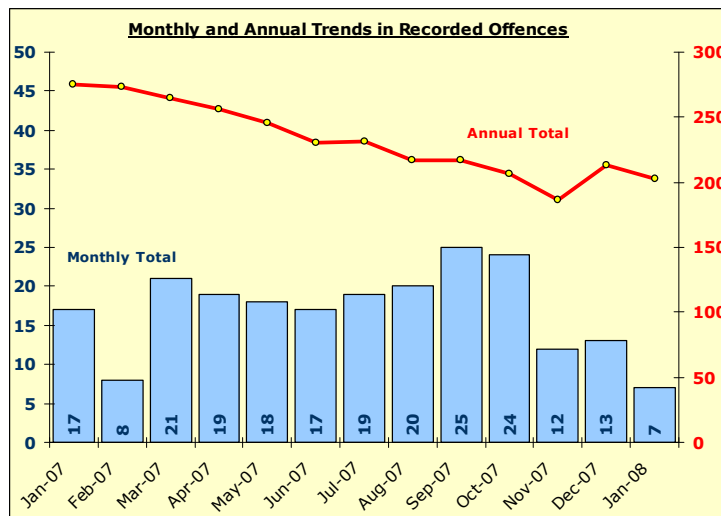


Total Most Serious Violence Against the Person

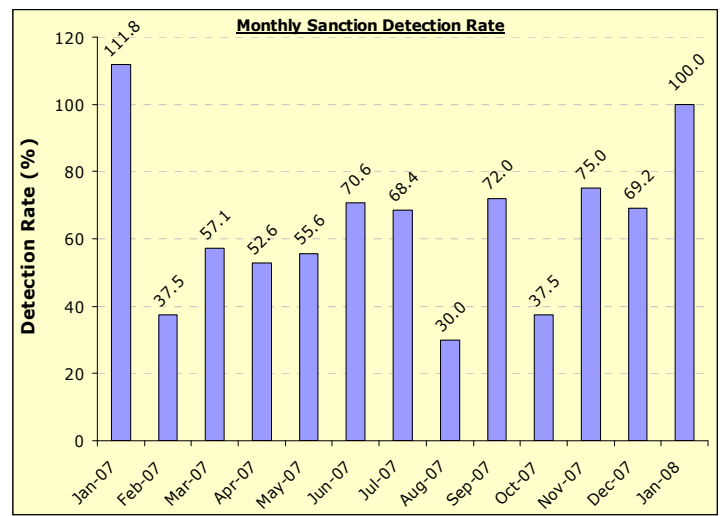
DYFED-POWYS POLICE

Home Office Public Service Agreement (PSA TARGET 2008 – 2011)

Recorded Crime Levels – January 2008

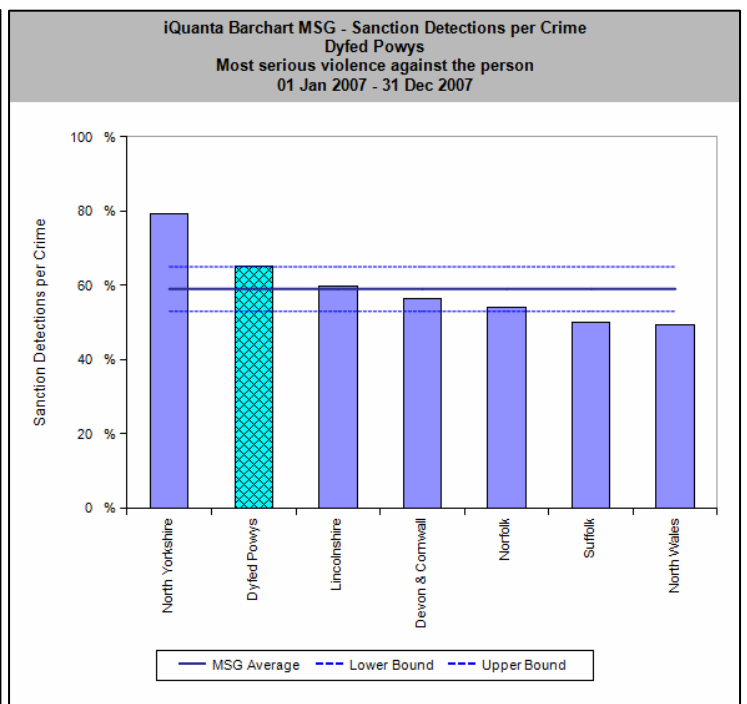
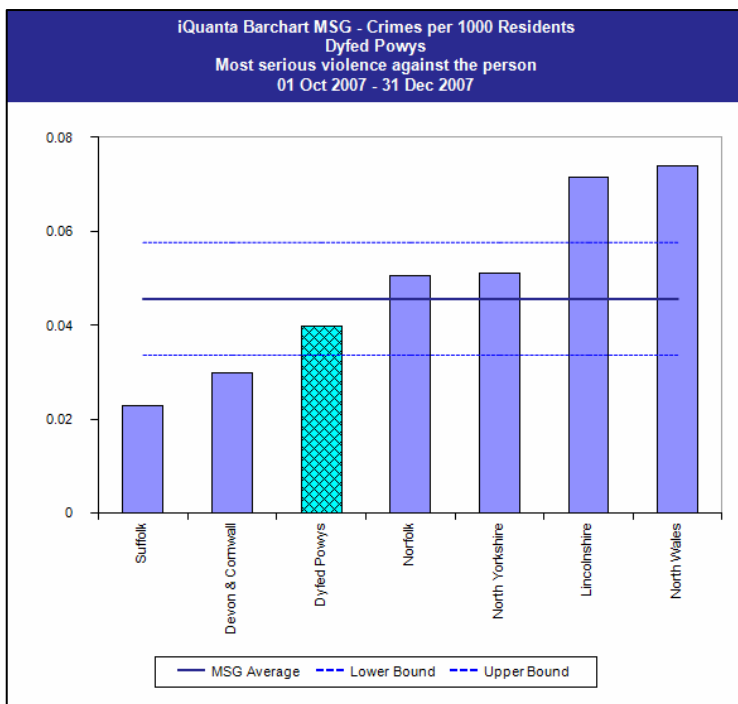


Monthly Sanction Detection Rates – January 2008



* - Please note DPP figures currently include offences of 'Threat or Conspiracy to Murder' **in addition** to the formal Home Office definition of 'Most Serious VAP'.

Total More Serious VAP	YTD: Jan-08			Detection Rates YTD		Annual Trends SPLY		
	Recorded Offences	Sanction Detections	Total Detections	Sanction Detection Rate	Total Detection Rate	Recorded Offences	Diff in Number	% Change in Offences
THE FORCE	174	103	103	59.2%	59.2%	236	- 62	- 26.3%
Carmarthenshire	82	40	40	48.8%	48.8%	111	- 29	- 26.1%
Ceredigion	33	17	17	51.5%	51.5%	38	- 5	- 13.2%
Pembrokeshire	31	21	21	67.7%	67.7%	55	- 24	- 43.6%
Powys	28	25	25	89.3%	89.3%	32	- 4	- 12.5%



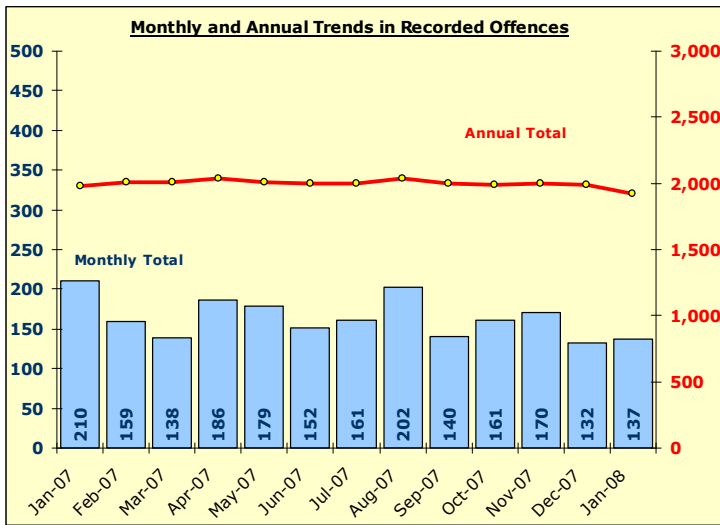
Please note the Home Office Definition of Most Serious Violence Against the Person includes Home Office codes for Murder (1); Attempted Murder (2); Manslaughter (4.1); Infanticide (4.2); Child Destruction (4.3); Causing Death by Driving/Dangerous/Careless Driving (4.4/4.6/4.8/4.9); More Serious Wounding (5) and Causing Death by Aggravated Vehicle Taking (37.1).

Total Vehicle Crime

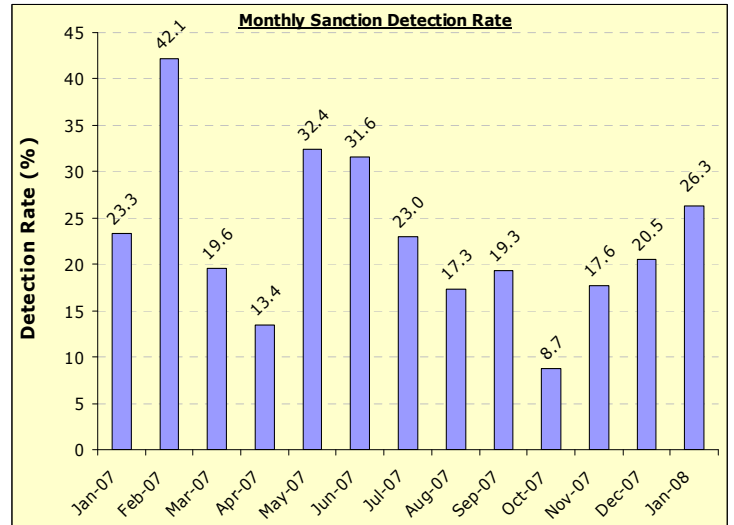
DYFED-POWYS POLICE

TARGET 2007/08: 2% Target Reduction as component of Total Acquisitive Crime (SPI 5f)

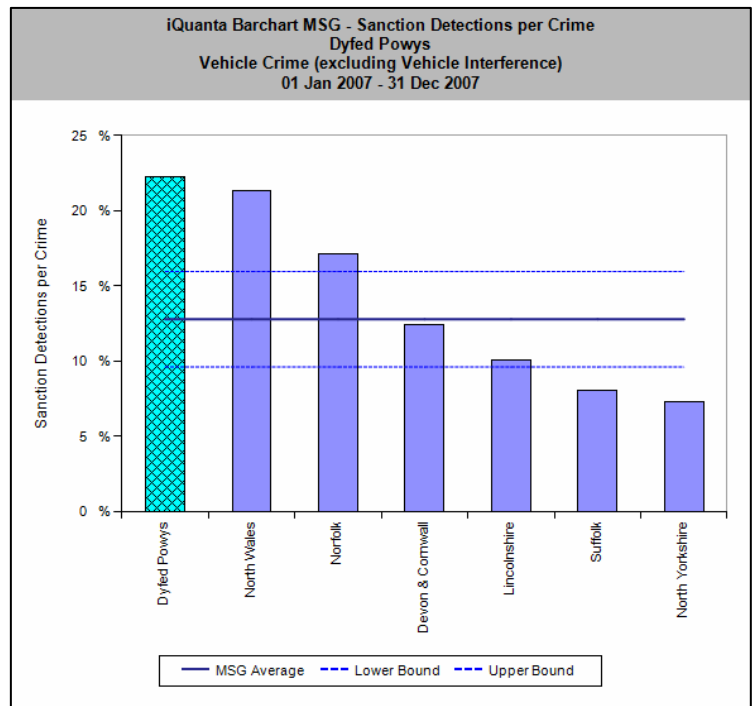
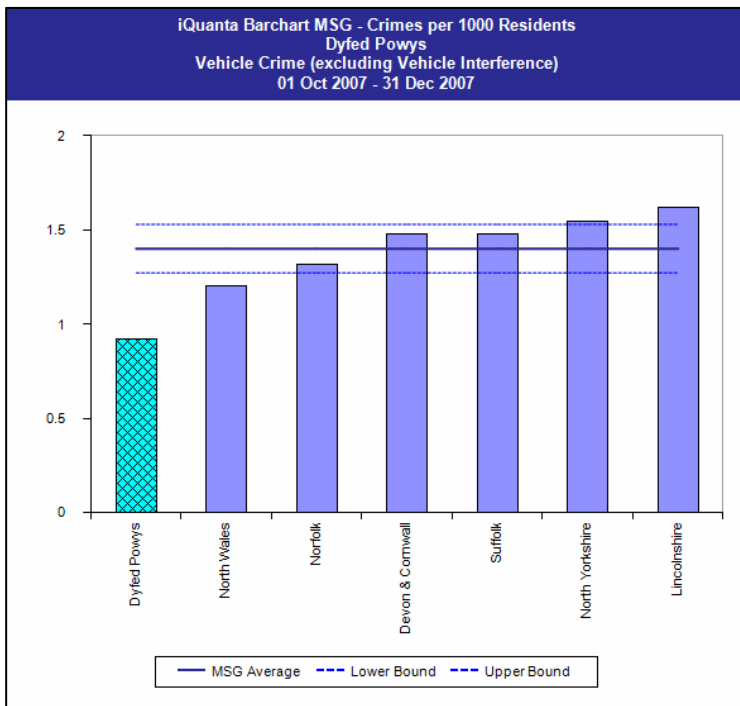
Recorded Crime Levels – January 2008



Monthly Sanction Detection Rates – January 2008



Total Autocrime	YTD: Jan-08			Detection Rates YTD		Annual Trends SPLY		
	Recorded Offences	Sanction Detections	Total Detections	Sanction Detection Rate	Total Detection Rate	Recorded Offences	Diff in Number	% Change in Offences
THE FORCE	1,620	337	337	20.8%	20.8%	1,708	- 88	- 5.2%
Carmarthenshire	613	159	159	25.9%	25.9%	670	- 57	- 8.5%
Ceredigion	151	38	38	25.2%	25.2%	202	- 51	- 25.2%
Pembrokeshire	407	69	69	17.0%	17.0%	449	- 42	- 9.4%
Powys	449	71	71	15.8%	15.8%	387	+ 62	+ 16.0%

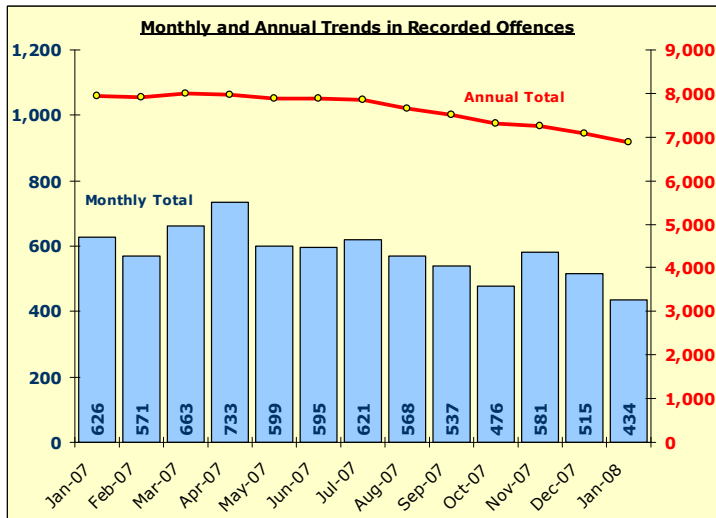


Total Criminal Damage

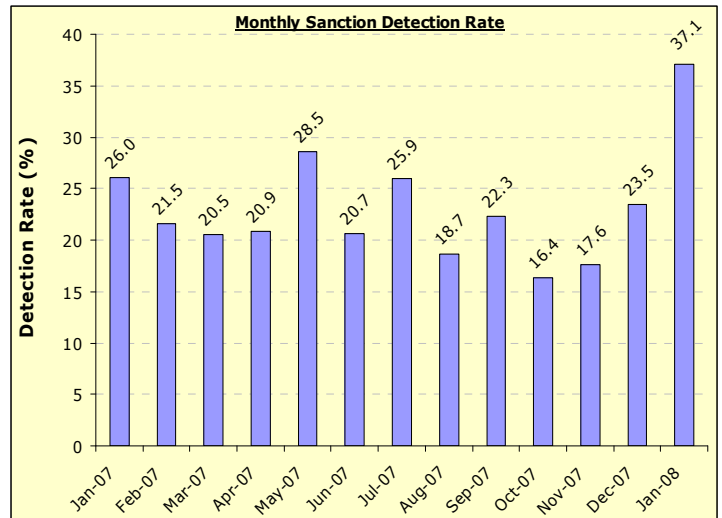
INCLUDES ARSON & THREAT TO COMMIT CRIMINAL DAMAGE

TARGET 2007/08: 3% Target Reduction and 26% detection rate (Local Policing Priority 2007/08)

Recorded Crime Levels – January 2008

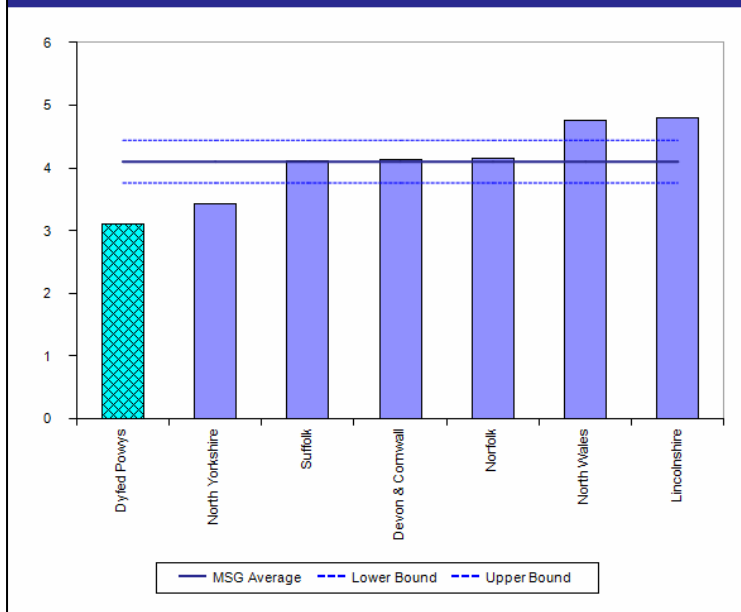


Monthly Sanction Detection Rates – January 2008

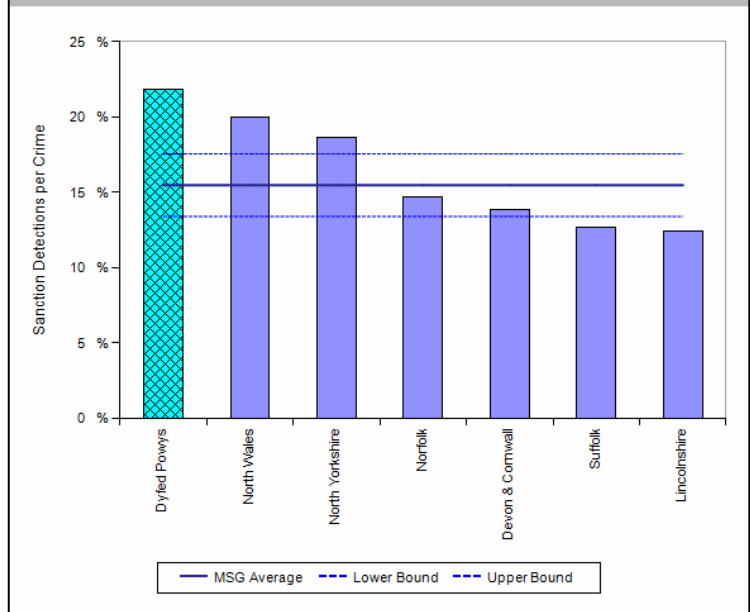


Total Criminal Damage	YTD: Jan-08			Detection Rates YTD		Annual Trends SPL Y		
	Recorded Offences	Sanction Detections	Total Detections	Sanction Detection Rate	Total Detection Rate	Recorded Offences	Diff in Number	% Change in Offences
THE FORCE	5,659	1,296	1,296	22.9%	22.9%	6,769	- 1,110	- 16.4%
Carmarthenshire	1,939	493	493	25.4%	25.4%	2,456	- 517	- 21.1%
Ceredigion	820	179	179	21.8%	21.8%	866	- 46	- 5.3%
Pembrokeshire	1,623	328	328	20.2%	20.2%	1,932	- 309	- 16.0%
Powys	1,277	296	296	23.2%	23.2%	1,515	- 238	- 15.7%

iQuanta Barchart MSG - Crimes per 1000 Residents
Dyfed Powys
Criminal Damage (exc 59)
01 Oct 2007 - 31 Dec 2007



iQuanta Barchart MSG - Sanction Detections per Crime
Dyfed Powys
Criminal Damage (exc 59)
01 Jan 2007 - 31 Dec 2007

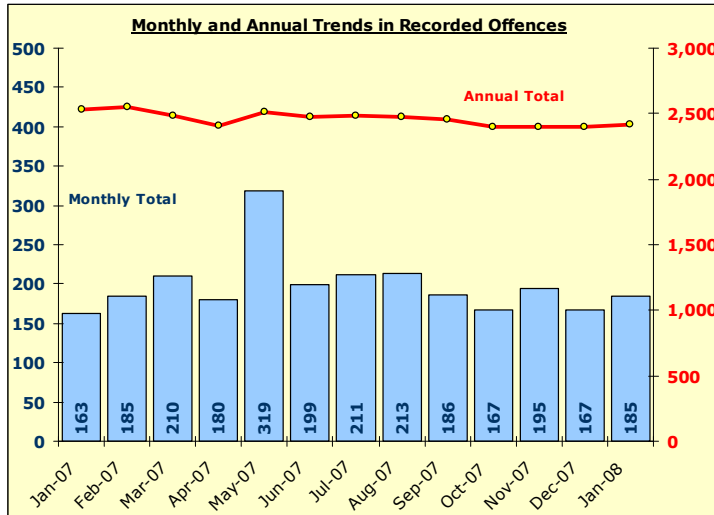


Total Drug Offences

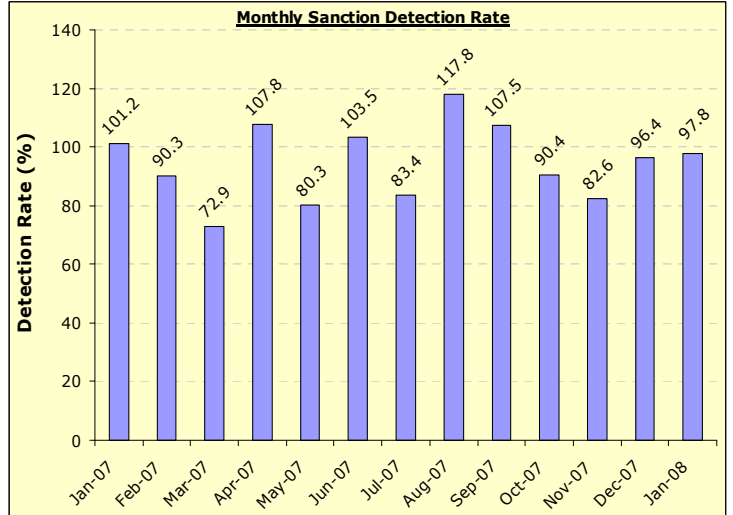
DYFED-POWYS POLICE

TARGET 2007/08 : NO TARGET

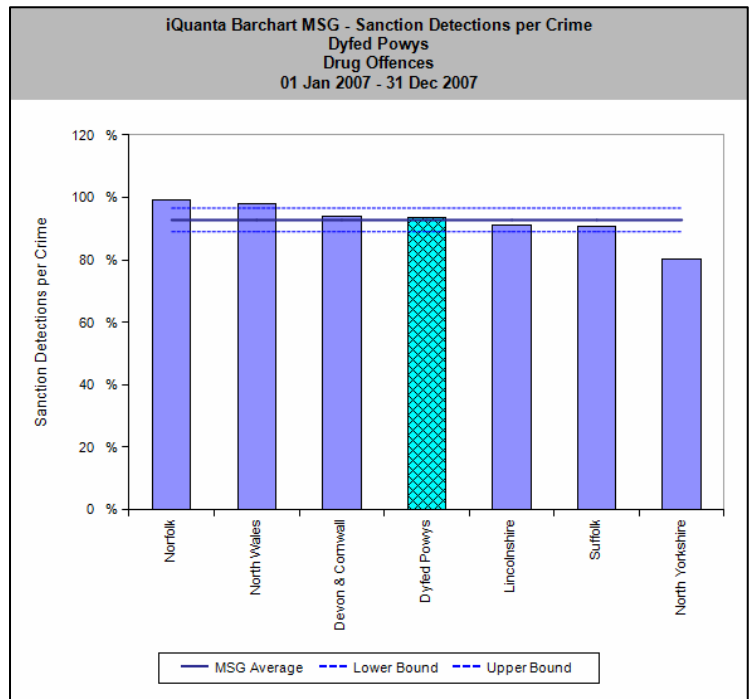
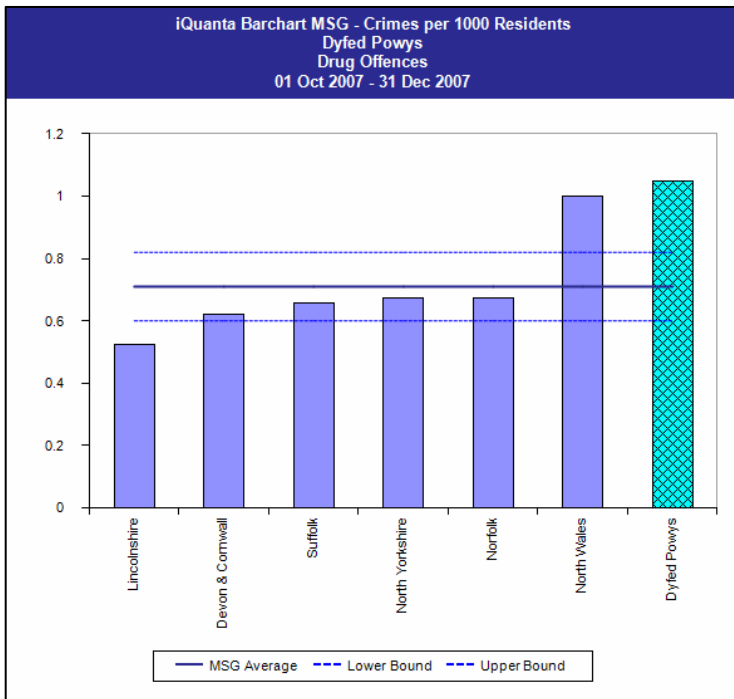
Recorded Crime Levels – January 2008



Monthly Sanction Detection Rates – January 2008



Total Drug Offences	YTD: Jan-08			Detection Rates YTD		Annual Trends SPLY		
	Recorded Offences	Sanction Detections	Total Detections	Sanction Detection Rate	Total Detection Rate	Recorded Offences	Diff in Number	% Change in Offences
THE FORCE	2,022	1,937	1,937	95.8%	95.8%	2,089	- 67	- 3.2%
Carmarthenshire	706	709	709	100.4%	100.4%	817	- 111	- 13.6%
Ceredigion	401	372	372	92.8%	92.8%	361	+ 40	+ 11.1%
Pembrokeshire	364	350	350	96.2%	96.2%	347	+ 17	+ 4.9%
Powys	551	506	506	91.8%	91.8%	564	- 13	- 2.3%



Section Level Sanction Detection Summary

DYFED-POWYS POLICE

Total Recorded Crime & Domestic Burglary

Total Recorded Crimes: January 2008 YTD & SPLY

Sanction Detection Rate	YTD			SPLY				Recorded Offences	Diff in Number	% Change in Offences
	Recorded Offences	Sanction Detections	Sanction Detection Rate	Sanction Detections	Sanction Det Rate	Diff in Number of S Dets	% Change in No of S Dets.			
THE FORCE	21,763	9,273	42.6%	10,908	42.2%	-1,635	-15.0%	25,818	-4,055	-15.7%
Carmarthenshire	7,794	3,750	48.1%	4,189	44.0%	-439	-10.5%	9,524	-1,730	-18.2%
Amman/Towy (AW)	1,362	594	43.6%	731	43.5%	-137	-18.7%	1,681	-319	-19.0%
Carmarthen Town (AC)	1,429	648	45.3%	624	44.2%	+24	+3.8%	1,412	+17	+1.2%
Carmarthen Rural (AY)	611	321	52.5%	357	44.1%	-36	-10.1%	810	-199	-24.6%
Gwendraeth (AT)	1,035	503	48.6%	597	42.4%	-94	-15.7%	1,407	-372	-26.4%
Llanelli Town (AL)	2,397	1,201	50.1%	1,281	43.1%	-80	-6.2%	2,970	-573	-19.3%
Llanelli Rural (AZ)	960	483	50.3%	599	48.2%	-116	-19.4%	1,244	-284	-22.8%
Ceredigion	3,211	1,362	42.4%	1,716	46.0%	-354	-20.6%	3,733	-522	-14.0%
Ceredigion North (BA)	1,726	746	43.2%	1,004	47.8%	-258	-25.7%	2,101	-375	-17.8%
Ceredigion South (BS)	1,483	616	41.5%	712	43.6%	-96	-13.5%	1,632	-149	-9.1%
Pembrokeshire	5,562	2,104	37.8%	2,575	38.8%	-471	-18.3%	6,635	-1,073	-16.2%
Fishguard (CF)	623	249	40.0%	327	41.7%	-78	-23.9%	784	-161	-20.5%
Haverfordwest (CH)	1,405	629	44.8%	798	45.3%	-169	-21.2%	1,761	-356	-20.2%
Milford Haven (CM)	1,136	408	35.9%	480	36.4%	-72	-15.0%	1,317	-181	-13.7%
Pembroke Dock (CP)	1,364	452	33.1%	529	33.3%	-77	-14.6%	1,589	-225	-14.2%
Tenby (CT)	1,034	366	35.4%	441	37.2%	-75	-17.0%	1,184	-150	-12.7%
Powys	5,196	2,057	39.6%	2,428	41.0%	-371	-15.3%	5,926	-730	-12.3%
Brecon (DB)	1,256	464	36.9%	644	39.4%	-180	-28.0%	1,633	-377	-23.1%
Llandrindod Wells (DL)	1,009	391	38.8%	385	38.5%	+6	+1.6%	1,000	+9	+0.9%
Newtown (DN)	1,542	669	43.4%	772	43.0%	-103	-13.3%	1,796	-254	-14.1%
Welshpool (DW)	968	375	38.7%	462	42.5%	-87	-18.8%	1,086	-118	-10.9%
Ystradgynlais (DY)	421	158	37.5%	165	40.1%	-7	-4.2%	411	+10	+2.4%

Total Domestic Burglary: January 2008 YTD & SPLY

Sanction Detection Rate	YTD			SPLY				Recorded Offences	Diff in Number	% Change in Offences
	Recorded Offences	Sanction Detections	Sanction Detection Rate	Sanction Detections	Sanction Det Rate	Diff in Number of S Dets	% Change in No of S Dets.			
THE FORCE	671	161	24.0%	217	32.7%	-56	-25.8%	663	+8	+1.2%
Carmarthenshire	258	93	36.0%	120	44.4%	-27	-22.5%	270	-12	-4.4%
Amman/Towy (AW)	45	13	28.9%	14	24.6%	-1	-7.1%	57	-12	-21.1%
Carmarthen Town (AC)	30	8	26.7%	7	36.8%	+1	+14.3%	19	+11	+57.9%
Carmarthen Rural (AY)	24	11	45.8%	4	28.6%	+7	+175.0%	14	+10	+71.4%
Gwendraeth (AT)	46	16	34.8%	12	37.5%	+4	+33.3%	32	+14	+43.8%
Llanelli Town (AL)	75	31	41.3%	58	54.7%	-27	-46.6%	106	-31	-29.2%
Llanelli Rural (AZ)	38	14	36.8%	25	59.5%	-11	-44.0%	42	-4	-9.5%
Ceredigion	83	23	27.7%	19	22.9%	+4	+21.1%	83	=	-
Ceredigion North (BA)	40	9	22.5%	11	24.4%	-2	-18.2%	45	-5	-11.1%
Ceredigion South (BS)	43	14	32.6%	8	21.1%	+6	+75.0%	38	+5	+13.2%
Pembrokeshire	154	25	16.2%	37	23.3%	-12	-32.4%	159	-5	-3.1%
Fishguard (CF)	20	4	20.0%	11	47.8%	-7	-63.6%	23	-3	-13.0%
Haverfordwest (CH)	41	6	14.6%	14	35.9%	-8	-57.1%	39	+2	+5.1%
Milford Haven (CM)	27	2	7.4%	7	18.4%	-5	-71.4%	38	-11	-28.9%
Pembroke Dock (CP)	36	10	27.8%	3	8.1%	+7	+233.3%	37	-1	-2.7%
Tenby (CT)	30	3	10.0%	2	9.1%	+1	+50.0%	22	+8	+36.4%
Powys	176	20	11.4%	41	27.2%	-21	-51.2%	151	+25	+16.6%
Brecon (DB)	38	4	10.5%	16	36.4%	-12	-75.0%	44	-6	-13.6%
Llandrindod Wells (DL)	42	4	9.5%	8	25.0%	-4	-50.0%	32	+10	+31.3%
Newtown (DN)	68	8	11.8%	7	18.9%	+1	+14.3%	37	+31	+83.8%
Welshpool (DW)	17	3	17.6%	7	29.2%	-4	-57.1%	24	-7	-29.2%
Ystradgynlais (DY)	11	1	9.1%	3	21.4%	-2	-66.7%	14	-3	-21.4%

Section Level Sanction Detection Summary

DYFED-POWYS POLICE

Total Violent Crime and Total Vehicle Crime

Total Violent Recorded Crimes: January 2008 YTD & SPLY

Sanction Detection Rate	YTD			SPLY				Recorded Offences	Diff in Number	% Change in Offences
	Recorded Offences	Sanction Detections	Sanction Detection Rate	Sanction Detections	Sanction Det Rate	Diff in Number of S Dets	% Change in No of S Dets.			
THE FORCE	5,449	3,226	59.2%	4,211	59.0%	-985	-23.4%	7,132	-1,683	-23.6%
Carmarthenshire	2,013	1,221	60.7%	1,604	60.9%	-383	-23.9%	2,634	-621	-23.6%
Amman/Towy (AW)	354	183	51.7%	243	58.6%	-60	-24.7%	415	-61	-14.7%
Carmarthen Town (AC)	396	227	57.3%	260	57.5%	-33	-12.7%	452	-56	-12.4%
Carmarthen Rural (AY)	136	89	65.4%	124	57.1%	-35	-28.2%	217	-81	-37.3%
Gwendraeth (AT)	284	184	64.8%	243	62.3%	-59	-24.3%	390	-106	-27.2%
Llanelli Town (AL)	581	367	63.2%	504	61.0%	-137	-27.2%	826	-245	-29.7%
Llanelli Rural (AZ)	262	171	65.3%	230	68.9%	-59	-25.7%	334	-72	-21.6%
Ceredigion	787	427	54.3%	523	53.8%	-96	-18.4%	972	-185	-19.0%
Ceredigion North (BA)	434	234	53.9%	286	54.1%	-52	-18.2%	529	-95	-18.0%
Ceredigion South (BS)	351	193	55.0%	237	53.5%	-44	-18.6%	443	-92	-20.8%
Pembrokeshire	1,427	804	56.3%	1,077	57.3%	-273	-25.3%	1,880	-453	-24.1%
Fishguard (CF)	148	87	58.8%	124	58.2%	-37	-29.8%	213	-65	-30.5%
Haverfordwest (CH)	377	215	57.0%	300	57.8%	-85	-28.3%	519	-142	-27.4%
Milford Haven (CM)	267	145	54.3%	216	58.5%	-71	-32.9%	369	-102	-27.6%
Pembroke Dock (CP)	393	209	53.2%	266	54.4%	-57	-21.4%	489	-96	-19.6%
Tenby (CT)	242	148	61.2%	171	59.0%	-23	-13.5%	290	-48	-16.6%
Powys	1,222	774	63.3%	1,007	61.2%	-233	-23.1%	1,646	-424	-25.8%
Brecon (DB)	292	186	63.7%	251	63.1%	-65	-25.9%	398	-106	-26.6%
Llandrindod Wells (DL)	196	130	66.3%	172	63.7%	-42	-24.4%	270	-74	-27.4%
Newtown (DN)	421	268	63.7%	342	57.9%	-74	-21.6%	591	-170	-28.8%
Welshpool (DW)	200	123	61.5%	170	62.7%	-47	-27.6%	271	-71	-26.2%
Ystradgynlais (DY)	113	67	59.3%	72	62.1%	-5	-6.9%	116	-3	-2.6%

Total Vehicle Crimes: January 2008 YTD & SPLY

Sanction Detection Rate	YTD			SPLY				Recorded Offences	Diff in Number	% Change in Offences
	Recorded Offences	Sanction Detections	Sanction Detection Rate	Sanction Detections	Sanction Det Rate	Diff in Number of S Dets	% Change in No of S Dets.			
THE FORCE	1,620	337	20.8%	311	18.2%	+26	+8.4%	1,708	-88	-5.2%
Carmarthenshire	613	159	25.9%	123	18.4%	+36	+29.3%	670	-57	-8.5%
Amman/Towy (AW)	85	16	18.8%	25	18.8%	-9	-36.0%	133	-48	-36.1%
Carmarthen Town (AC)	67	15	22.4%	8	15.1%	+7	+87.5%	53	+14	+26.4%
Carmarthen Rural (AY)	52	8	15.4%	7	12.7%	+1	+14.3%	55	-3	-5.5%
Gwendraeth (AT)	135	39	28.9%	22	19.1%	+17	+77.3%	115	+20	+17.4%
Llanelli Town (AL)	197	64	32.5%	40	19.7%	+24	+60.0%	203	-6	-3.0%
Llanelli Rural (AZ)	77	17	22.1%	21	18.9%	-4	-19.0%	111	-34	-30.6%
Ceredigion	151	38	25.2%	63	31.2%	-25	-39.7%	202	-51	-25.2%
Ceredigion North (BA)	58	9	15.5%	8	10.4%	+1	+12.5%	77	-19	-24.7%
Ceredigion South (BS)	93	29	31.2%	55	44.0%	-26	-47.3%	125	-32	-25.6%
Pembrokeshire	407	69	17.0%	61	13.6%	+8	+13.1%	449	-42	-9.4%
Fishguard (CF)	50	10	20.0%	6	10.2%	+4	+66.7%	59	-9	-15.3%
Haverfordwest (CH)	89	17	19.1%	19	19.4%	-2	-10.5%	98	-9	-9.2%
Milford Haven (CM)	88	25	28.4%	11	12.8%	+14	+127.3%	86	+2	+2.3%
Pembroke Dock (CP)	100	5	5.0%	10	9.3%	-5	-50.0%	107	-7	-6.5%
Tenby (CT)	80	12	15.0%	15	15.2%	-3	-20.0%	99	-19	-19.2%
Powys	449	71	15.8%	64	16.5%	+7	+10.9%	387	+62	+16.0%
Brecon (DB)	131	13	9.9%	12	12.1%	+1	+8.3%	99	+32	+32.3%
Llandrindod Wells (DL)	81	19	23.5%	14	21.9%	+5	+35.7%	64	+17	+26.6%
Newtown (DN)	124	21	16.9%	26	22.2%	-5	-19.2%	117	+7	+6.0%
Welshpool (DW)	63	14	22.2%	7	13.0%	+7	+100.0%	54	+9	+16.7%
Ystradgynlais (DY)	50	4	8.0%	5	9.4%	-1	-20.0%	53	-3	-5.7%

Domestic Incidents

DYFED POWYS POLICE

SPI 8A TARGET -47% (OR MORE) OF INCIDENTS WITH AN ARREST MADE
LOCAL TARGET - 5% REDUCTION IN TOTAL INCIDENTS INVOLVING REPEAT VICTIMS

For the latest detailed information please contact your local Public Protection Unit (PPU) for further details.

Total Domestic Incidents: Section & Divisional Incident Summary: January 2008 YTD

Please note that Repeat Victimisation is based on 12-months incident data. All other data is YTD (Apr 07 – Jan 08)

Section	Incidents		Total Arrest Rate		Repeat Incidents		Repeat Victims	Jan 2007 YTD (SPLY)	
	Total Incidents	Arrests	Total Arrest Rate	Total Incidents 12 mnths	Total Repeat Victim Incidents	% Repeats (12mnths data)**	Total Incidents	Annual % Change	
Ammanford/Towy (AW)	244	99	40.6%	284	47	16.5%	245	-0.4%	
Carmarthen (AC)	160	66	41.3%	184	54	29.3%	159	0.6%	
Carmarthen Rural (AY)	83	45	54.2%	94	13	13.8%	131	-36.6%	
Gwendraeth (AT)	176	75	42.6%	209	43	20.6%	236	-25.4%	
Llanelli (AL)	219	114	52.1%	281	65	23.1%	311	-29.6%	
Llanelli Rural (AZ)	169	93	55.0%	209	27	12.9%	293	-42.3%	
Carmarthenshire	1051	492	46.8%	1261	249	19.7%	1375	-23.6%	
Ceredigion North (BN)	138	75	54.3%	160	27	16.9%	145	-4.8%	
Ceredigion South (BS)	118	69	58.5%	140	30	21.4%	137	-13.9%	
Ceredigion	256	144	56.3%	300	57	19.0%	282	-9.2%	
Fishguard (CF)	118	59	50.0%	142	41	28.9%	134	-11.9%	
Haverfordwest (CH)	149	71	47.7%	187	28	15.0%	188	-20.7%	
Milford Haven (CM)	215	91	42.3%	263	73	27.8%	276	-22.1%	
Pembroke Dock (CP)	216	123	56.9%	268	62	23.1%	294	-26.5%	
Tenby (CT)	112	60	53.6%	139	12	8.6%	137	-18.2%	
Pembrokeshire	810	404	49.9%	999	216	21.6%	1029	-21.3%	
Brecon (DB)	67	42	62.7%	83	8	9.6%	134	-50.0%	
Llandrindod Wells (DL)	69	43	62.3%	91	13	14.3%	128	-46.1%	
Newtown (DN)	107	67	62.6%	138	28	20.3%	222	-51.8%	
Welshpool (DW)	79	40	50.6%	88	21	23.9%	88	-10.2%	
Ystradgynlais (DY)	49	28	57.1%	56	6	10.7%	68	-27.9%	
Powys	371	220	59.3%	456	76	16.7%	640	-42.0%	
Force	2488	1260	50.6%	3016	598	19.8%	3326	-25.2%	

Source: LCS Recorded Domestic Incident Details (all data extracted 05/02/08)

CRIME ONLY Domestic Incidents: Section & Divisional Crimes Summary: January 2008 YTD

Please note that Repeat Victimisation is based on 12-months incident data. All other data is YTD (Apr 07 – Jan 08)

Section	Crimes		Total Arrest Rate		Sanction Detections Crimes		Repeat Crimes		Repeat Victims	Jan 2008 YTD (SPLY)	
	Total Crimes	Arrests	Total Arrest Rate	Sanction Detections	% Sanction Detection Rate	Total Crimes 12 mnths	Total Repeat Victim Crimes	% Repeats (12mnths data)**	Total Crimes	Annual % Change	
Ammanford/Towy (AW)	103	81	78.6%	47	45.6%	116	9	7.8%	86	19.8%	
Carmarthen (AC)	68	49	72.1%	29	42.6%	75	15	20.0%	61	11.5%	
Carmarthen Rural (AY)	35	31	88.6%	25	71.4%	41	5	12.2%	50	-30.0%	
Gwendraeth (AT)	61	57	93.4%	44	72.1%	72	7	9.7%	91	-33.0%	
Llanelli (AL)	122	87	71.3%	62	50.8%	163	26	16.0%	170	-28.2%	
Llanelli Rural (AZ)	101	86	85.1%	61	60.4%	118	7	5.9%	107	-5.6%	
Carmarthenshire	490	391	79.8%	268	54.7%	585	69	11.8%	565	-13.3%	
Ceredigion North (BN)	68	54	79.4%	27	39.7%	81	6	7.4%	76	-10.5%	
Ceredigion South (BS)	77	60	77.9%	38	49.4%	91	15	16.5%	77	0.0%	
Ceredigion	145	114	78.6%	65	44.8%	172	21	12.2%	153	-5.2%	
Fishguard (CF)	47	40	85.1%	23	48.9%	54	6	11.1%	65	-27.7%	
Haverfordwest (CH)	78	59	75.6%	41	52.6%	88	7	8.0%	105	-25.7%	
Milford Haven (CM)	82	72	87.8%	51	62.2%	93	17	18.3%	89	-7.9%	
Pembroke Dock (CP)	95	78	82.1%	49	51.6%	119	18	15.1%	101	-5.9%	
Tenby (CT)	50	41	82.0%	28	56.0%	60	1	1.7%	56	-10.7%	
Pembrokeshire	352	290	82.4%	192	54.5%	414	49	11.8%	416	-15.4%	
Brecon (DB)	35	31	88.6%	13	37.1%	44	3	6.8%	64	-45.3%	
Llandrindod Wells (DL)	43	35	81.4%	20	46.5%	56	3	5.4%	61	-29.5%	
Newtown (DN)	70	59	84.3%	39	55.7%	88	10	11.4%	115	-39.1%	
Welshpool (DW)	49	36	73.5%	25	51.0%	56	8	14.3%	60	-18.3%	
Ystradgynlais (DY)	34	26	76.5%	17	50.0%	38	5	13.2%	42	-19.0%	
Powys	231	187	81.0%	114	49.4%	282	29	10.3%	342	-32.5%	
Force	1218	982	80.6%	639	52.5%	1453	168	11.6%	1476	-17.5%	

Source: LCS Recorded Domestic Incident Details (all data extracted 05/02/08).

User Satisfaction

CITIZEN FOCUS PERFORMANCE ASSESSMENT DOMAIN

SEPTEMBER 2007 DATA – LATEST AVAILABLE

These measures constitute the citizen focus domain in the police performance assessment framework. All victims of crimes (domestic burglary, violent crime and vehicle crime only) or those involved in road traffic collisions are surveyed within a short period of coming into contact with the force to gain their views on the service they received.

- For performance assessment purposes, these measurements of user satisfaction are grouped into five main theme:
- SPI 1a – Satisfaction with making contact with the police: 'Ease of Contact' **(2007/08 TARGET 93%)**
 - SPI 1b – Satisfaction with the action taken by the police: 'Actions' **(2007/08 TARGET 85%)**
 - SPI 1c – Satisfaction with being kept informed of progress: 'Follow-Up' **(2007/08 TARGET 75%)**
 - SPI 1d – Satisfaction with their treatment by staff: 'Treatment' **(2007/08 TARGET 93%)**
 - SPI 1e – Satisfaction with the overall service provided: 'Whole Experience' **(2007/08 TARGET 86%)**

Force User Satisfaction – Year Ending September 2007

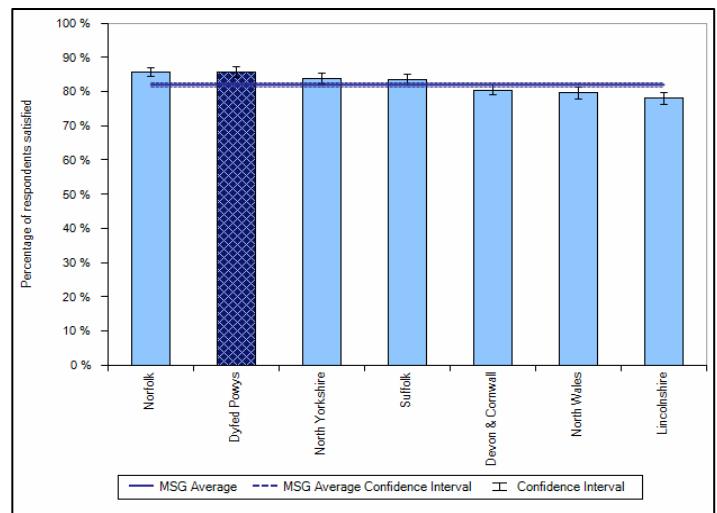
Comparative User Satisfaction 2007/08 (Year ending September 07)

Those persons completely, very or fairly satisfied.

Satisfaction with...	DPP Force	MSF Average	Difference
Ease of Contact	91.6%	91.9%	-0.3%
Actions	84.0%	78.4%	5.6%
Follow-up	75.3%	67.8%	7.5%
Treatment	92.8%	91.7%	1.1%
Whole experience	85.7%	82.0%	3.7%

Source: Home Office / Iquanta, November 2007

MSF – Comparative Force Performance - Whole Experience



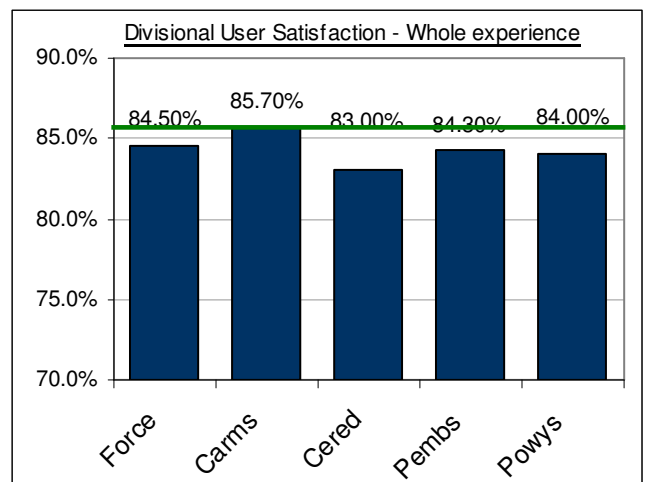
Source: Home Office / IQuanta, November 2007

Divisional User Satisfaction: April – September 2007 YTD (latest available)

BCU user Satisfaction Summary – September 2007 YTD

April 07 – September 07 YTD	% Satisfied (Very, Completely and Fairly Satisfied)					Target
	Force	Carms	Cered	Pembs	Powys	
Ease of Contact	92.1%	91.6%	93.6%	89.4%	93.9%	93%
Actions	83.3%	84.6%	80.2%	84.1%	82.5%	85%
Follow-up	74.3%	77.4%	74.1%	72.8%	72.1%	75%
Treatment	93.2%	93.9%	88.2%	94.3%	93.6%	93%
Whole experience	84.5%	85.7%	83.0%	84.3%	84.0%	86%

Source: Home Office / Iquanta, November 2007



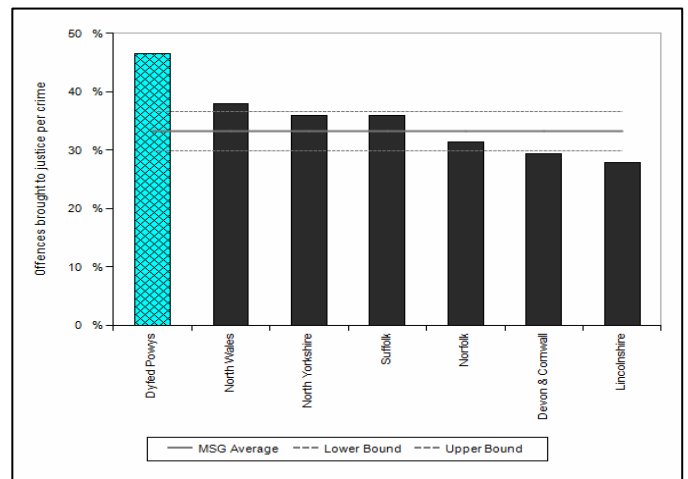
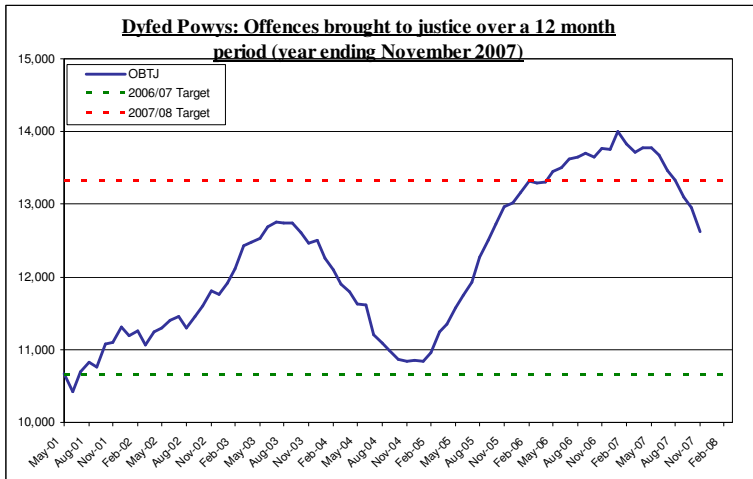
Additional comparative data is available on a quarterly basis. For further information on this or IQuanta contact Corporate Services (ext 23905).

Narrowing the Justice Gap - OFFENCES BROUGHT TO JUSTICE & SANCTION DETECTIONS

TARGET 2007/08 : LCJB TARGET – 13,320 (Offences Brought to Justice)

Total Offences Brought to Justice (OBTJ) – Force & MSF Comparisons

OBTJ – 12 monthly data	TIC	PND	F. Warnings	Cautions	Convictions	OBTJ
Baseline: Apr 01 – Mar 02	420	-	-	3,698	6,900	11,068
Latest Annual Data : December 06 – November 07	790	671	889	4,435	5,838	12,623
Change	+88%	-	-	+20%	-15%	+14%
2007/08 Force Target (20% from baseline)	YES	n/a	n/a	YES	NO	NO



OBTJ By Offence Type: Latest Local Criminal Justice Board Comparator Tool – Year Ending July 2007. (MSA = Most Similar Area)

Comparison of LCJB performance against MSA group by crime type (based on LCJB crime mix)

Dyfed-Powys	Sep-07					
Comparison with MSA	Convictions	Cautions	TICs	PNDs	FW	OBTJs
Dyfed-Powys	15%	65%	76%	-37%	1%	24%
Burglary	104 (67%)	71 (150%)	25			199 (64%)
Criminal Damage	160 (31%)	442 (102%)	66	16		684 (57%)
Drug Offences	-1 (0%)	197 (37%)	-2		11	205 (9%)
Fraud and Forgery	-51 (-20%)	28 (43%)	155			131 (31%)
Other Offences	85 (24%)	57 (83%)	-1			141 (33%)
Robbery	37 (280%)	0 (-100%)	0			36 (268%)
Sexual Offences	-15 (-14%)	10 (58%)	8			3 (2%)
Shop Lifting	17 (4%)	120 (38%)	-18	-141		-22 (-2%)
Theft and Handling	240 (57%)	258 (138%)	160			658 (87%)
VAP	168 (9%)	678 (57%)	0	-308		538 (14%)
Total	744	1,859	393	-433	11	2,574

Key

High rate - LCJB higher than MSA by greater than 10%
Middle rate - Difference between LCJB & MSA between -10% and 10%
Low rate - LCJB lower than MSA by more than 10%

Interpreting Comparative OBTJ

The table illustrates the relative importance of each type of OBTJ in comparison with the most similar area average.

The number is also represented as a % - which also shows the margin between force and average most similar area performance.

For example – Dyfed Powys is securing 104 more convictions for Burglary than its most similar area average – or expected amount. This equates to 67% above this average level. To indicate this higher rate results for this type of OBTJ it is coloured purple.

Comparison with MSA	Convictions
Dyfed-Powys	15%
Burglary	104 (67%)

Sanction Detection Volume Performance YTD: Current Clear-up Breakdown (Annual % Change)

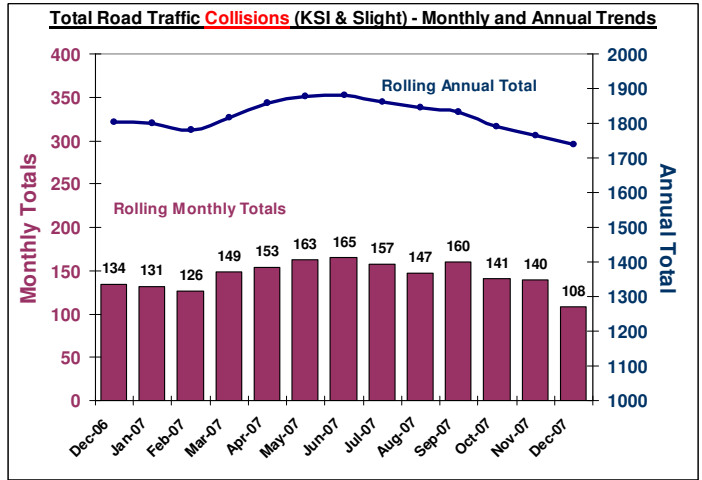
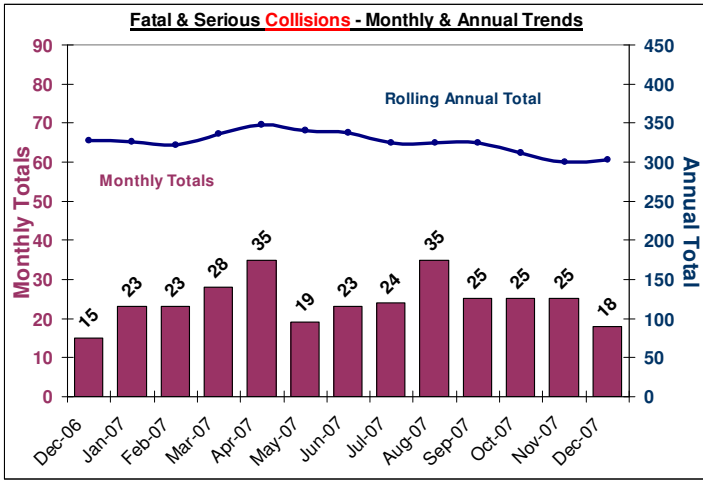
Area – January YTD	Charged		Summons		Cautioned		TIC		PND		F. Warning for Cannabis		Total Sanction Dets.	
CARM	1584 (-7%)	42%	11 (-66%)	3%	1389 (-11%)	37%	382 (+24%)	10%	117 (-50%)	3%	267 (-23%)	7%	3750 (-11%)	100%
CERED	625 (-14%)	46%	17 (-)	1%	456 (-21%)	33%	72 (-65%)	5%	58 (-32%)	4%	134 (+31%)	10%	1362 (-21%)	100%
PEMBS	934 (-8%)	44%	21 (+17%)	1%	902 (-24%)	43%	30 (-60%)	1%	114 (-43%)	5%	103 (+29%)	5%	2104 (-18%)	100%
POWYS	887 (-2%)	43%	32 (-6%)	2%	641 (-34%)	31%	49 (+96%)	2%	182 (-19%)	9%	266 (+0.4%)	13%	2057 (-15%)	100%
FORCE	4030 (-7%)	43%	81 (-20%)	1%	3388 (-21%)	37%	533 (-14%)	6%	471 (-37%)	5%	770 (-3%)	8%	9273 (-15%)	100%

Road Traffic Collisions / Casualties

August Monthly Data Latest available

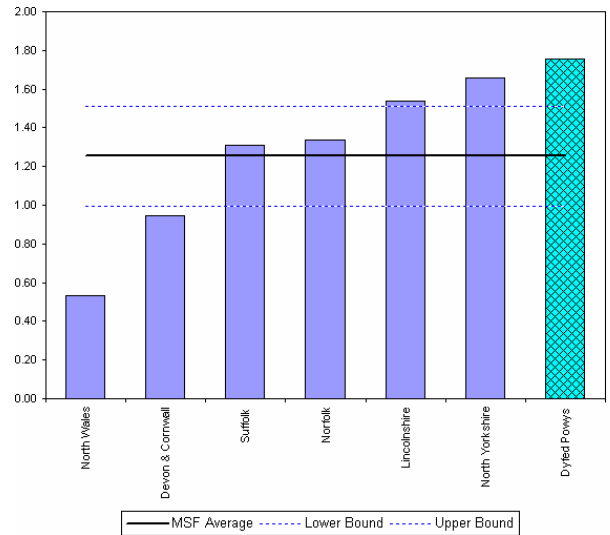
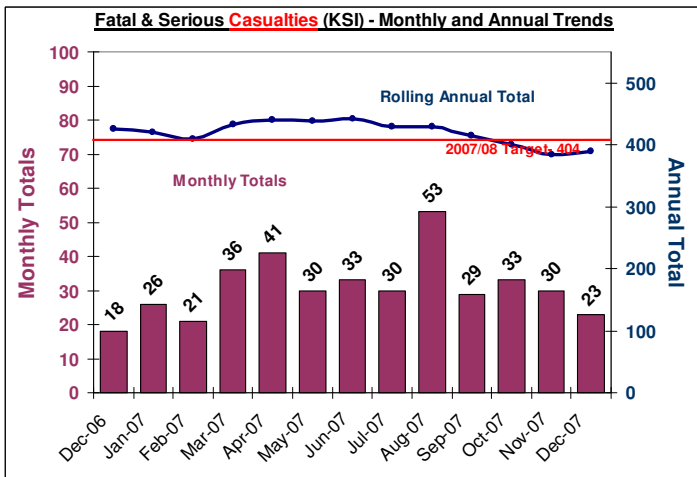
TARGET 2007/08 SPI 9A: 404 FATAL AND SERIOUS CASUALTIES (0.8 PER 1,000 POPULATION)

COLLISIONS : Road Traffic Collisions – Monthly & Annual Trends (December 07 – latest data)



Performance YTD (December 2007 YTD - latest)	FORCE	Carms	Cered	Pembs	Powys
Fatal Road Collisions & / Casualties YTD	33/37	7/8	5/5	4/6	17/18
Serious & Fatal Road Collisions & / Casualties YTD	229/302	48/55	39/50	61/87	81/110
Indicator –Casualties Per 1,000 population	0.6	0.3	0.6	0.7	0.8
On Target (SPI 9a – 0.6 pro-rata)	YES	YES	YES	NO	NO
Fatal Collisions/Casualties (SPLY)	43/49	8/9	6/6	7/7	22/27
Serious & Fatal Collisions/Casualties (SPLY)	259/339	66/84	42/52	64/83	87/120

CASUALTIES: Road Traffic Casualties – 2010 Roads Policing Target Progress



December 2007 YTD (latest)	Force	Carms	Cered	Pembs	Powys
Number of people killed or seriously injured casualties	302	55	50	87	110
At 2010 Target Level*	YES	YES	YES	NO	YES
**Number of Children (<=15 yrs) killed or seriously injured	42	11	7	15	9
At 2010 Target Level*	NO	YES	NO	NO	NO
Number of persons with slight injuries	1737	553	292	403	489
At 2010 Target Level*	NO	NO	NO	NO	NO

* 2010 Targets Established with Roads Policing Strategy, Operations Dept & National Road Policing Targets. Progress towards Pro-Rata year-end 2010 target illustrated here based on benchmark 1994-1998 performance

Source: MAAP RTC Database 08/02/08

** - Figures previously reported for August 2007 have been corrected.

Road Policing Performance

SELECTED MEASURES OF ROADS POLICING ACTIVITY 2007/08

These measures constitute a range of selected measures to illustrate performance with respect to roads policing. The measures are:

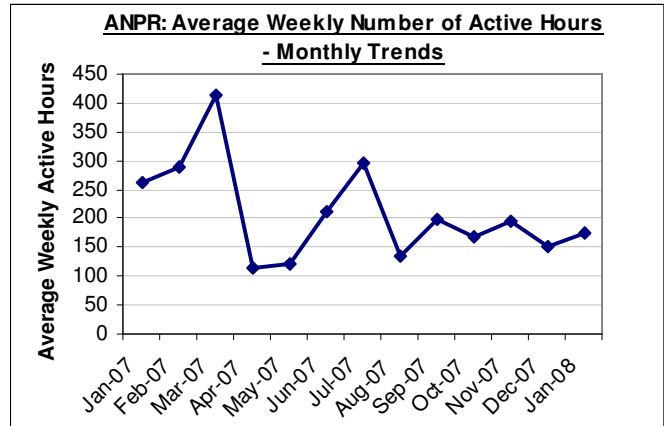
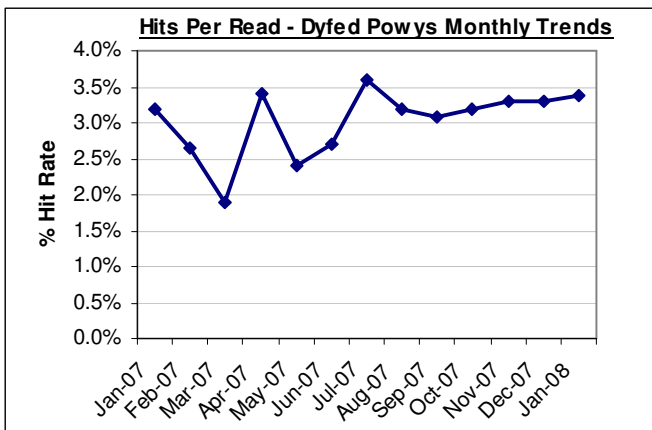
- BCU Breakdown of ANPR Performance
- Vehicle Seizures – by reason for seizure
- S.59 Seizure of Vehicles Used in an Anti-Social Manner

BCU Breakdown of ANPR Performance (latest January 2008 YTD) – please note additional comments

Covering the period: 01/04/2007-27/01/2008	Force*	Carms	Cered	Pembs*	Powys	Ports /Other*
ANPR Reads	1,059,119	444,214	169,995	104,908	317,487	22,515
ANPR Hits	33,801	13,089	6,500	3,440	10,625	147
Arrests	314	64	67	16	167	0
Total No. Operational Hours	6,876	2,630	1,439	456	2,239	112
% Hits from Reads	3.2%	2.9%	3.8%	3.3%	3.3%	0.6%
Hits per Operational Hour	4.9	5.0	4.5	7.5	4.7	1.3

* - No Operational Hours data available for Pembs in April 07 & Ports/other in April 07 and October 07

- In Jan : Reads for 3 Carms Vehicles submitted show 38,820 - Bof information show actually 50,661 Reads.
- Reads for 4 Cered Vehicles submitted show 12,571 - Bof information show actually 31,780 Reads.
- Reads for 3 Pembs Vehicles submitted show 2,323 - Bof information show actually 11,574 Reads.
- Reads for 5 Powys Vehicles submitted show 11,393 - Bof information show actually 31,695 Reads



Vehicle Seizures / Recovered (January 2008 YTD)

FPN's Issued for Driving Offences (January 2008 YTD)

Reason for Seizure/Recovery	Number	%
Road Traffic Collision	1842	56.3
No Insurance/Licence (sect 165)	892	27.2
Used in Crime	161	4.9
Obstruction/Danger	132	4.0
Stolen/Abandoned	127	3.9
Abandoned	58	1.8
Prisoners Vehicle	24	0.7
Owner Request	12	0.4
Other Reason	26	0.8
Total	3274	100

Source: VMU February 2008

	Mobile Phone	Seat Belt	Speeding
Carms	215	395	201
Cered	36	150	177
Pembs	211	180	587
Powys	85	99	209
Force	547	824	1174

Source: Admin of Justice 08/02/08

S.59 Seizure of Vehicles Used in an Anti-Social Manner (latest)

April 2007 – January 2008	Number of Incidents YTD				
Vehicles ...	Force	Carms	Cered	Pembs	Powys
Seized	4	1	0	0	3
Warned	117	34	9	40	34

Source: PNC Records

Local Policing Domain – Force Summary

2007/08: LOCAL POLICING DOMAIN – LOCAL PRIORITIES AND TARGETS

These priorities constitute a range of selected priorities to illustrate performance within the Local Policing Domain:

Terrorism and Domestic Extremism: Objective – To support the wider national endeavour in protecting the country from terrorism and domestic extremism.

Drugs : Objective – To proactively target and disrupt Class A drug supply and distribution networks across and beyond the Force area

Violent Crime : Objective - To reduce levels of violent crime and seek to increase detection rates in this area.

Anti-Social Behaviour : Objective - To proactively tackle anti-social behaviour in conjunction with partners, providing greater reassurance to the public.

Measure	Targets		FORCE	CARMS	CERED	PEMBS	POWYS
Terrorism & Domestic Extremism <i>(National Theme - not appropriate to set local measures)</i>							
Drugs							
Number of Class-A drug offenders charged with trafficking	To increase the numbers of offenders charged by 5%	Apr 07 - Jan 08	123	38	20	30	35
		Apr 06 - Jan 07	70	27	16	21	6
		Difference	+53	+11	+4	+9	+29
		% change	75.7%	40.7%	25.0%	42.9%	483.3%
Number of Class-A drug offences of possession	To increase the numbers of offences by 10%	Apr 07 - Jan 08	276	107	63	49	57
		Apr 06 - Jan 07	275	89	55	37	94
		Difference	+1	+18	+8	+12	-37
		% change	0.4%	20.2%	14.5%	32.4%	-39.4%
Number of offences recorded for the production of controlled drugs	To increase the numbers of offences by 10%	Apr 07 - Jan 08	92	33	23	14	22
		Apr 06 - Jan 07	70	28	10	18	14
		Difference	+22	+5	+13	-4	+8
		% change	31.4%	17.9%	130.0%	-22.2%	57.1%
Violent Crime							
No. of incidents involving victims of domestic violence who have been a victim in more than one incident in the previous 12 months	To reduce the number of repeat incidents by 5%	Year end Jan 08	598	249	57	216	76
		Year end Jan 07	809	347	46	276	140
		Difference	-211	-98	+11	-60	-64
		% change	-26.1%	-28.2%	23.9%	-21.7%	-45.7%
The Proportion of violent crime offences resulting in sanction detection - excluding Harassment offences resulting in a FPN.	To attain a detection rate of 60% (sanction detections)	Sanction Detection Rate	57.2%	59.3%	52.3%	54.8%	56.7%
No. of violence offences against the person where alcohol is identified as a contributory factor	To reduce the number of recorded offences by 5%	Apr 07 - Jan 08	3017	1135	417	821	644
		Apr 06 - Jan 07	3736	1365	535	1002	834
		Difference	-719	-230	-118	-181	-190
		% change	-19.2%	-16.8%	-22.1%	-18.1%	-22.8%
Anti-Social Behaviour							
The number of recorded Criminal Damage Offences	To reduce the number of recorded offences by 3%	Apr 07 - Jan 08	5659	1939	820	1623	1277
		Apr 06 - Jan 07	6769	2456	866	1932	1515
		Difference	-1110	-517	-46	-309	-238
		% change	-16.4%	-21.1%	-5.3%	-16.0%	-15.7%
The proportion of criminal damage offences resulting in a sanction detection	To attain a detection rate of 26% (sanction detections)	Sanction Detection Rate	23.2%	24.3%	23.2%	21.2%	24.2%
The number of recorded Anti-Social Behaviour incidents	Police Authority Measure – For Monitoring Purposes only	Apr 07 - Jan 08	29014	10952	3938	8112	6012
		Apr 06 - Jan 07	29280	10846	3700	8347	6387
		Difference	-266	+106	+238	-235	-375
		% change	-0.9%	+1.0%	+6.4%	-2.8%	-5.9%

Local Policing Domain – Section Summary

2007/08: LOCAL POLICING DOMAIN – LOCAL PRIORITIES AND TARGET CONTRIBUTION

Section Breakdown: January 2008 YTD

Drugs

Section	Class-A Drugs								
	Number of Class-A drug offenders charged with trafficking			Number of Class-A drug offences of possession			Number of Offences recorded for the production of controlled drugs		
	Jan 08	% change Target - Increase no. offenders charged by 5%	SPLY	Jan 08*	% change Target - Increase no. offences detected by 10%	SPLY	Jan 08	% change Target - Increase no. offences charged by 10%	SPLY
Amman/Towy (AW)	0	-100.0%	2	19	58.3%	12	7	-41.7%	12
Carmarthen (AC)	3	-40.0%	5	15	0.0%	15	1	-50.0%	2
Carmarthen Rural (AY)	2	-75.0%	8	6	-25.0%	8	7	75.0%	4
Gwendraeth (AT)	2	100.0%	1	4	33.3%	3	9	0.0%	9
Llanelli (AL)	20	185.7%	7	46	21.1%	38	5	#DIV/0!	0
Llanelli Rural (AZ)	11	175.0%	4	17	30.8%	13	4	300.0%	1
CARMS	38	40.7%	27	107	20.2%	89	33	17.9%	28
Ceredigion North (BN)	14	40.0%	10	50	51.5%	33	4	100.0%	2
Ceredigion South (BS)	6	0.0%	6	13	-40.9%	22	19	137.5%	8
CEREDIGION	20	25.0%	16	63	14.5%	55	23	130.0%	10
Fishguard (CF)	6	#DIV/0!	0	5	400.0%	1	2	-80.0%	10
Haverfordwest (CH)	12	1100.0%	1	19	35.7%	14	3	0.0%	3
Milford Haven (CM)	2	-33.3%	3	3	-62.5%	8	6	100.0%	3
Pembroke Dock (CP)	7	16.7%	6	13	62.5%	8	2	100.0%	1
Tenby (CT)	3	-72.7%	11	9	50.0%	6	1	0.0%	1
PEMBS	30	42.9%	21	49	32.4%	37	14	-22.2%	18
Brecon (DB)	4	100.0%	2	16	-71.4%	56	2	100.0%	1
Llandrindod Wells (DL)	1	-50.0%	2	8	-20.0%	10	4	33.3%	3
Newtown (DN)	8	300.0%	2	18	80.0%	10	10	150.0%	4
Welshpool (DW)	22	#DIV/0!	0	9	-30.8%	13	1	-66.7%	3
Ystradgynlais (DY)	0	#DIV/0!	0	6	20.0%	5	5	66.7%	3
POWYS	35	483.3%	6	57	-39.4%	94	22	57.1%	14
FORCE	123	75.7%	70	276	0.4%	275	92	31.4%	70

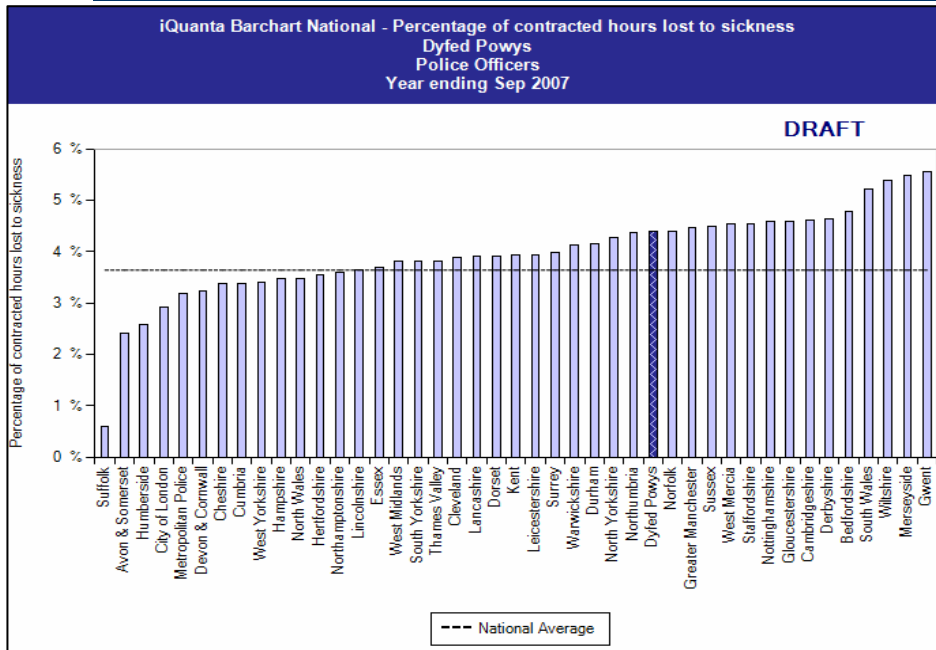
Anti-Social Behaviour; Domestic Violence; Violent Crime

Section	Violent Crime							Anti-Social Behaviour			
	No. Incidents involving victims of domestic violence who have been a victim more than once in previous 12 months			No. Violence offences against person where alcohol is a contributory factor			Proportion Violent Crime offences resulting in a sanction detection - exc. Harassment FPN's Target - Sanction Detection Rate of 60%	No. Recorded Criminal Damage Offences		Proportion Criminal Damage offences resulting in a sanction detection Target - Sanction Detection Rate of 26%	
	Year ending Jan 08	% change Target - Reduce No. Repeat Incidents by 5%	SPLY	Jan 08	% change Target - Reduce no. offences by 5%	SPLY		Jan 08	% change Target - Reduce No. Recorded Offences by 3%	SPLY	Target - Sanction Detection Rate of 26%
Amman/Towy (AW)	47	-19.0%	58	180	-15.5%	213	50.6%	356	-21.1%	451	25.7%
Carmarthen (AC)	54	68.8%	32	253	-5.9%	269	53.8%	334	6.0%	315	20.6%
Carmarthen Rural (AY)	13	-50.0%	26	71	-27.6%	98	65.2%	136	-29.9%	194	28.4%
Gwendraeth (AT)	43	-10.4%	48	133	-31.8%	195	63.8%	239	-31.7%	350	26.3%
Llanelli (AL)	65	-25.3%	87	371	-17.7%	451	62.1%	613	-24.8%	815	20.6%
Llanelli Rural (AZ)	27	-71.9%	96	127	-8.6%	139	65.0%	261	-21.1%	331	30.2%
CARMS	249	-28.2%	347	1135	-16.8%	1365	59.3%	1939	-21.1%	2456	24.3%
Ceredigion North (BN)	27	42.1%	19	253	-19.4%	314	51.3%	430	-10.2%	479	24.8%
Ceredigion South (BS)	30	11.1%	27	164	-25.8%	221	53.4%	390	0.8%	387	21.2%
CEREDIGION	57	23.9%	46	417	-22.1%	535	52.3%	820	-5.3%	866	23.2%
Fishguard (CF)	41	20.6%	34	85	-19.0%	105	57.9%	157	-21.9%	201	32.3%
Haverfordwest (CH)	28	-36.4%	44	218	-23.5%	285	54.9%	325	-18.3%	398	24.1%
Milford Haven (CM)	73	-14.1%	85	162	-17.8%	197	52.9%	441	-9.1%	485	19.4%
Pembroke Dock (CP)	62	-33.3%	93	206	-6.8%	221	52.1%	438	-15.8%	520	14.4%
Tenby (CT)	12	-40.0%	20	150	-22.7%	194	59.3%	262	-20.1%	328	24.1%
PEMBS	216	-21.7%	276	821	-18.1%	1002	54.8%	1623	-16.0%	1932	21.2%
Brecon (DB)	8	-66.7%	24	175	-25.2%	234	60.7%	285	-32.5%	422	18.0%
Llandrindod Wells (DL)	13	-27.8%	18	98	-31.5%	143	64.3%	286	10.4%	259	24.7%
Newtown (DN)	28	-53.3%	60	223	-22.0%	286	59.1%	351	-30.2%	503	26.0%
Welshpool (DW)	21	-8.7%	23	99	-17.5%	120	57.5%	246	-3.5%	255	28.2%
Ystradgynlais (DY)	6	-60.0%	15	49	-3.9%	51	56.7%	109	43.4%	76	30.3%
POWYS	76	-45.7%	140	644	-22.8%	834	59.8%	1277	-15.7%	1515	24.2%
FORCE	598	-26.1%	809	3017	-19.2%	3736	57.2%	5659	-16.4%	6769	23.2%

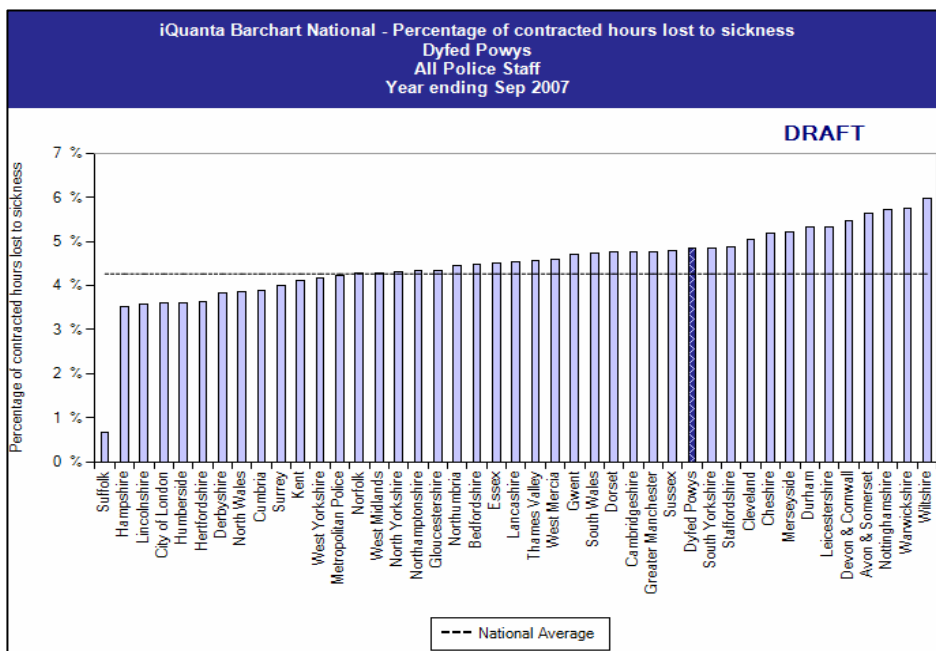
Target for Sanction Detection Rate for Violent Crime is 60%. Any section within 10% of this target is marked as reaching the target. Target for Sanction Detection Rate for Criminal Damage is 26%. Any section within 10% of this target is marked as reaching the target. * November data has been corrected

Sickness Absence

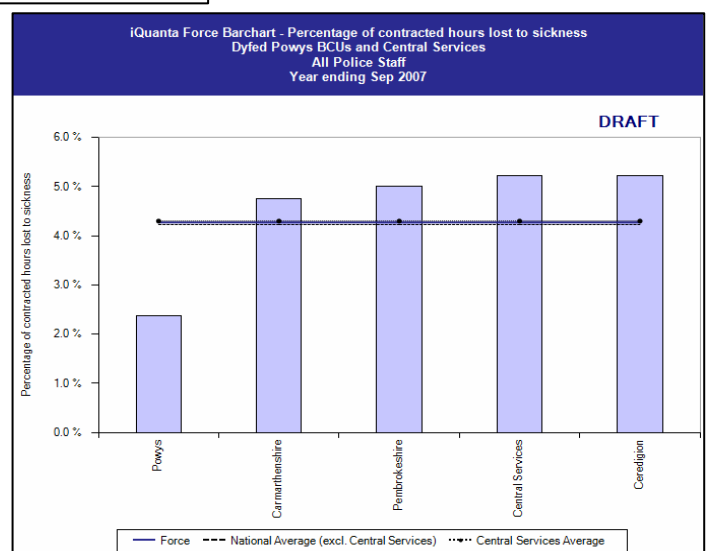
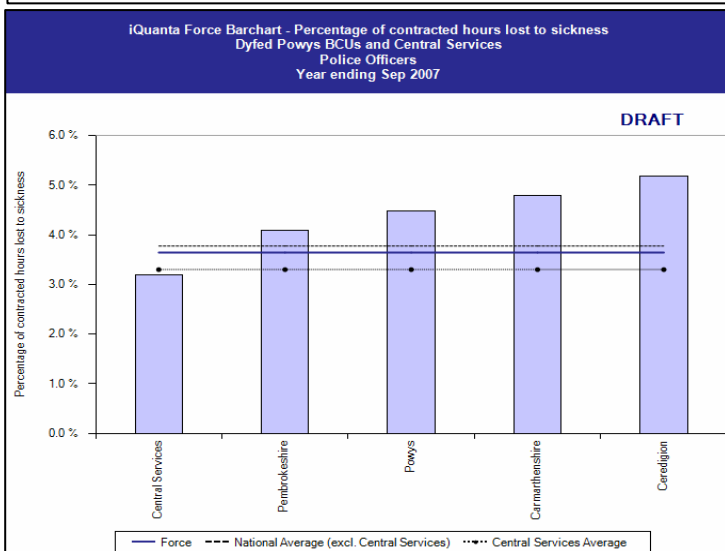
% CONTRACTED HOURS LOST TO SICKNESS YEAR ENDING SEPTEMBER 2007
 2007/08 TARGET: Police Officers & Police Staff – (Benchmarked on 2006/07)



MSF	Sickness Rate
Norfolk	4.4%
DPP	4.4%
North Yorkshire	4.3%
Lincolnshire	3.6%
North Wales	3.5%
Devon & Cornwall	3.2%
Suffolk	TBC
Most Similar Force Avg	3.9%
National Average	3.6%



MSF	Sickness Rate
Devon & Cornwall	5.5%
DPP	4.9%
North Yorkshire	4.3%
Norfolk	4.3%
North Wales	3.8%
Lincolnshire	3.6%
Suffolk	TBC
Most Similar Force Avg	4.4%
National Average	4.3%



Corporate Health Scorecard

2007/08: MONITORING THE PERFORMANCE OF DPP HQ DEPARTMENTS – QUARTERLY UPDATE

This presents current performance in a range of core corporate support functions. These are intended to complement the existing force performance measures that comprise operational outputs, activities, the PPAF statutory performance indicators and the local policing domain. These corporate functions cover five core areas of activity:

- IS&T
- Human Resources
- Finance
- Procurement
- Estate Management

A list of 32 selected measures was agreed with the respective departments as an adequate representation of their annual performance. Within these 32 measures, 13 were able to be updated on a quarterly basis and are detailed below.

Corporate Health Measures 2007/08				
Core Function	Measure/Data Item	Apr-Jun 07	Jul-Sept 07	Oct-Dec 07
Information Systems and Technology	Number of calls to the service desk logged	3646	3162	3813
	Number of calls to the service desk resolved	3454	2986	3652
	The percentage of calls to the service desk resolved within the agreed timescale	94.7%	94.4%	95.8%
Human Resources	Ratio of HR Staff to total employees (FTE)	74.2 emp./HR staff (25.6 HR:1901.0 total)	77.6 emp./HR staff (24.6 HR: 1911.2 total)	78.0 emp./HR staff (24.6 HR: 1918.4 total)
	Percentage of leadership posts [^] that are currently filled by persons in an acting or temporary leadership capacity ^{**}	Officers – 26% (8/31) Staff – 1% (1/75)	Officers – 27% (8/30) Staff – 1% (1/75)	Officers – 29% (10/35) Staff – 0% (0/75)
	Average days per employee lost through sickness absence for a) Police Officers and b) Police Staff	a) 2.3 days / officer b) 2.3 days / police staff	a) 2.2 days / officer b) 3.0 days / police staff	a) 2.5 days / officer b) 3.5 days / police staff
Finance	Average no. of days it takes to close the final ledger each month	31 days	32 days	33 days
	Number and amount of outstanding invoices	143 outstanding invoices (£989,715)	131 outstanding invoices (£907,851)	118 outstanding invoices (£720,842)
	Percentage of invoices paid within the 30-day payment target	81% (4298 invoices paid)	82% (4,137 invoices paid)	82% (4,703 invoices paid)
	Cost of damage to police vehicles	40 incidents (total cost £11,698)	35 incidents (total cost £8,120)	39 incidents (total cost £15,484)
Procurement	Number and value of procurement card transactions	1,131 transactions (value £200,740)	1,059 transactions (value £210,523)	1,542 transactions (value £277,312)
	Number and value of total purchase orders raised	650 orders (Gross Value £3,229,824)	668 orders (Gross Value £3,447,575)	581 orders (Gross Value £1,515,305)
	Number of new suppliers on force procurement systems	104 new suppliers (2646 total – main ledger only)	73 new suppliers (2671 total – main ledger only)	59 new suppliers (2742 total – main ledger only)
Estate Management	Energy consumption in HQ : a) total kw/h and b) per HQ staff member ^{^^}	a) 564,529 kwh b) 937.8 kwh per HQ staff member	a) 573,547 kwh b) 952.7 kwh per HQ staff member	a) 615,415 kwh b) 1,022.3 kwh per HQ staff member
	Water consumption in HQ: a) total cubic metres ^{***} and b) per HQ staff member ^{^^}	a) 3253 cubic metres b) 5.4 cubic metres per staff member	a) 3253 cubic metres b) 5.4 cubic metres per staff member	No invoices received since 31/10/07

* Home Office definition of Personnel/HR. Excludes Development Services

** Excludes those acting up from Chief Inspector upwards

***Pro-rata based on data 24/4/07 – 31/10/07 excl sewerage.

[^]Police Staff at Grade G or above and Officers at Chief Inspector level and above.

^{^^} HQ staff levels taken from year-end 2006/07 profile

PPAF Statutory Performance Indicator Summary

Reported Quarterly

HOME OFFICE POLICE PERFORMANCE ASSESSMENT FRAMEWORK MEASURES

Statutory Performance Indicators: April 2007 – December 2007

PPAF DOMAIN		SPI Number	Indicator Description	2006/07 Performance	2007/08 Performance	Change	2007/08 End of Year Target
CITIZEN FOCUS (DOMAIN A)	User Satisfaction Measures	1a [^]	Satisfaction of victims of domestic burglary, violent crime, vehicle crime and road traffic collisions with respect to - a) making contact with the Police	92.1%	92.1%	0.0%	93%
		1b [^]	b) action taken by the Police	80.5%	83.3%	2.8%	85%
		1c [^]	c) Being kept informed of progress	71.4%	74.3%	2.9%	75%
		1d [^]	d) Their treatment by staff	90.8%	93.2%	2.4%	93%
		1e [^]	e) the overall service provided	80.6%	84.5%	3.9%	86%
	Confidence Measure	2a [^]	Using the BCS, the % of people who think their local police do a good job	54.8%	56.1%	1.3%	56%
	Fairness and Equality Measures	3a [^]	Satisfaction of victims of racist incidents with respect to the overall service provided	81.8%	88.9%	7.1%	86%
		3b [^]	From SPI 1(e), comparison of satisfaction for white users and users from visible minority ethnic groups with respect to the overall service provided.	White - 80.5% Ethnic - 86.7%	White - 85.2% Ethnic - 78.9%	White +4.7% Ethnic -7.8%	White - 86% Ethnic - 86%
		3c(i) [^]	(i) % of PACE stop/searches which lead to arrest by ethnicity	White - 16.4% Ethnic - 23.5%	White - 12.0% Ethnic - 17.4%	White -4.4% Ethnic -6.1%	White - 20% Ethnic - 20%
		3d	Comparison of percentage detected of violence against the person offences by ethnicity of the victim (sanction detections)	White - 51.1% Ethnic - 48.2%	White - 49.5% Ethnic - 51.3%	White -1.6% Ethnic +3.1%	White - 40% Ethnic - 40%
3e		Proportion of police recruits (ethnic) compared to the proportion of people from minority ethnic groups in the economically active population (EAP).	6.1% of recruits 1.0% of EAP	0.0% of recruits 1.0% of EAP	-	1.0%	
RESOURCE USAGE (B)		3g	% of female police officers compared to overall Force strength.	22.0%	23.7%	1.7%	22%
	REDUCING CRIME (DOMAIN 1)	4a [^]	Using the British Crime Survey (a) the risk of personal crime; and	2.5%	3.3%	0.8%	8%
4b [^]		(b) the risk of household crime.	10.7%	11.2%	0.5%	11%	
5b		(b) Violent crime per 1,000 population.	13.07 (6,582 crimes)	10.05 (5,061 crimes)	-3.02 (-1,521 crimes)	15.6 (7,900 crimes)	
5e*		(e) Life threatening crime and gun crime per 1,000 population.	0.22 (110 crimes)	0.16 (83 crimes)	-0.06 (-27 crimes)	0.28	
5f		(f) Acquisitive Crime per 1,000 population	5.16 (2,599 crimes)	5.10 (2,568 crimes)	-0.06 (-31 crimes)	6.6 (3,322 crimes)	
INVESTIGATING CRIME (DOMAIN 2)	Offences Brought to Justice Measures (OBTJ)	6b*	% of notifiable/recorded offences resulting in convictions, caution or taken into consideration at court	43.1%	46.2%	3.1%	45%
	Detection Measure	7a	% of notifiable/recorded offences resulting in charge, summons, caution or taken into consideration at court ('sanction detections')	41.6%	41.8%	0.2%	40%
	Domestic Violence Measures	8a	Percentage of domestic violence incidents where an arrest was made relating to the incident.	46.7%	49.4%	2.7%	47%
	Asset Seizure	8c ^{^^}	Value of cash forfeiture orders and confiscation orders per 1,000 population	£313,938**	£570,654	£256,716	£717,212
PROMOTING PUBLIC SAFETY (DOMAIN 3)	Traffic Measures	9a(i)*	i) Number of people killed in under 30 days or seriously injured in road traffic collisions	321 fatal or serious casualties	276 fatal or serious casualties	-45 casualties	403 fatal or serious casualties
		9a(ii)*	(ii) Number of persons killed or seriously injured in road traffic collisions per 100million vehicle kilometres travelled.	6.2	5.3	-0.90	8.2
	Quality of Life Measures	10a [^]	Using the British Crime Survey a) fear of crime	5.8%	7.3%	1.5%	10%
		10b [^]	Perceptions of anti-social behaviour; and	9.8%	8.4%	-1.4%	12%
10c [^]	Perceptions of local drug use / drug dealing	24.0%	24.6%	0.6%	22%		
PROVIDING ASSISTANCE (DOMAIN 4)	Resource Use Measures	11a	Percentage of police officer time spent on frontline duties	N/A	N/A	-	68.7%
RESOURCE USE (DOMAIN B)		12a	Delivery of cashable and non-cashable efficiency targets	6.10%	N/A	-	3%
		13a [^]	Percentage of working hours lost due to sickness for police officers	3.8%	4.2%	0.40%	2.8%
		13b [^]	Percentage of working hours lost due to sickness for police staff	4.4%	5.4%	1.00%	3.6%
LOCAL POLICING DOMAIN	Local Policing Domain	LP 1.1	No. of class A drug offenders charged with trafficking	67	116	73.1%	95
		LP 1.2	No. of class A drug offences of possession	249	255	2.4%	363
		LP 1.3	No. of Drug Offences for the production of controlled drugs	63	82	30.2%	86
		LP 2.1	No. of incidents involving victims of domestic violence who have been a victim in more than one incident in the previous 12-months	820	629	-23.3%	779
		LP 2.2	% of violent crime detected (sanction detections) - excluding Harassment offences resulting in a fixed penalty notice	58.7% (3,630)	55.9% (2,698)	-2.8% (-932 dets)	60%
		LP 2.3	No. of violent offences against the person where alcohol is identified as a contributory factor	3,414	2,767	-19.0%	4106
		LP 3.1	No. of recorded Criminal Damage offences	6,143	5,225	-14.9%	7764
		LP 3.2	Sanction Detection Rate for Criminal Damage Offences	22.9%	21.7%	-1.2%	26%

[^] Latest data available for the period April 2007 - September 2007

^{^^} Latest data available for the period April 2007 - October 2007

* Latest data available for the period April 2007 - November 2007

** Data is pro-rata based on figure for Year ending October 2006