



Heddlu Dyfed-Powys Police

CRIME TRENDS UPDATE **September 2005**

Contents:

Headline Statistics	2
Most Frequent Recorded Offences Profile	3
Recorded Crimes and Detection Rates	4
Domestic Burglaries and Detection Rates	5
Other Burglary and Detection Rates	6
Violent Crime and Detection Rates	7
Vehicle Crime and Detection Rates	8
Criminal Damage and Detection Rates	9
Drugs Statistics and Detection Rates	10
Section Level Sanction Detection Summary	11
Divisional Contribution to Targets	12
Domestic Incidents	16
Narrowing the Justice Gap	17
Road Traffic Collisions	18
PPAF Statutory Performance Indicator Summary	19

Heddlu Dyfed Powys Police: Corporate Services

Recorded Crime:

- Total Recorded Crime is down by 5% (-937 crimes) compared to the same period last year (SPLY) to stand at 16,362 crimes. The monthly figure for September 2005 stands at 2,402 – a fall of 6% (-156 offences) on the same month in 2004, and 12% (-313 offences) down on the preceding month August 2005.
- Recorded detection performance has a total detection rate for the force at 42% (6943 total detections) compared with 39% the previous year. The volume of total detections has increased by 3% (+212 detections). The sanction detection rate stands at 37% - this is consistent with the target rate of 31% (compared with 29% last year). The volume of sanction detections has increased by 933 or 19%.

Domestic Burglary:

- Total Domestic Burglary offences are down by 31% (-187 crimes) compared to the same period last year (SPLY) to stand at 412 crimes. The monthly figure for September 2005 stands at 65 – a fall of 42% (-48 offences) on the same month in 2004, but a 20% (+11 offences) increase on the preceding month August 2005.
- Recorded detection performance remains higher than last year, with the total detection rate for the force at 28% (115 detections) compared with 23% the previous year. The volume of total detections has decreased by 17% (-24) as a consequence of this substantial fall in offences. The sanction detection rate stands at 27% (up from 20% last year) with the volume of sanction detections falling by 8% (-9).

Violent Crimes:

- Total Violent crime remains down by 6% (-287 crimes) compared to the same period last year (SPLY) to stand at 4497 crimes. The monthly figure for September 2005 stands at 668 – a fall of 2% (-15 offences) on the same month in 2004, and an 11% (-84 offences) fall on the preceding month August 2005.
- Recorded detection performance stands at a total detection rate for the force of 61% (2746 detections) up from 58% last year. The volume of total detections has increased by 1% (+22) over this period. Furthermore the sanction detection rate stands at 49% (compared with 37% last year) with the volume recorded up by 22% (+395 sanction detections).

Vehicle Crime:

- Total Vehicle crime is down by 20% (-252 crimes) compared to the same period last year (SPLY) to stand at 1027 crimes. The monthly figure for September 2005 stands at 175 – a fall of 12% (-24 offences) on the same month in 2004, but a 4% increase (+7 offences) on the preceding month August 2005.
- Recorded total detection stands at 16% (159 detections) down from 19% the previous year. The volume of total detections has decreased by 36% (-88) as a consequence this fall in recorded offences. The sanction detection rate stands at 14% (compared with 17% last year) with the volume down considerably (-76 sanction detections or 35%).

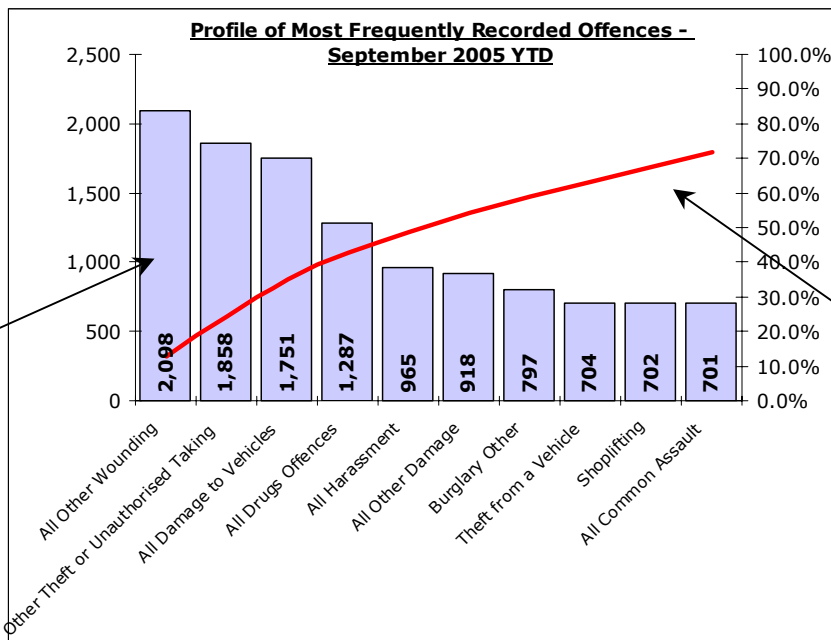
Criminal Damage:

- Total Criminal Damage has fallen by 5% (-210 crimes) compared to the same period last year (SPLY) to stand at 3956 (excl Arson & Threat to Commit CD). The monthly figure for September 2005 stands at 514 – a fall of 7% (-36 offences) on the same month in 2004, and a fall of 25% (-172) on the previous month August 2005.
- Recorded detection performance has consolidated further, with the total detection rate for the force at 26% (1042 total detections) largely unchanged from the previous year in terms of both detection rate and volume – despite the reduction in offences. The sanction detection rate stands at 21% (compared with 17% last year) with the volume up a notable 22% over this period (+153 sanction detections).

Most Frequent Recorded Offences Profile

DYFED-POWYS POLICE

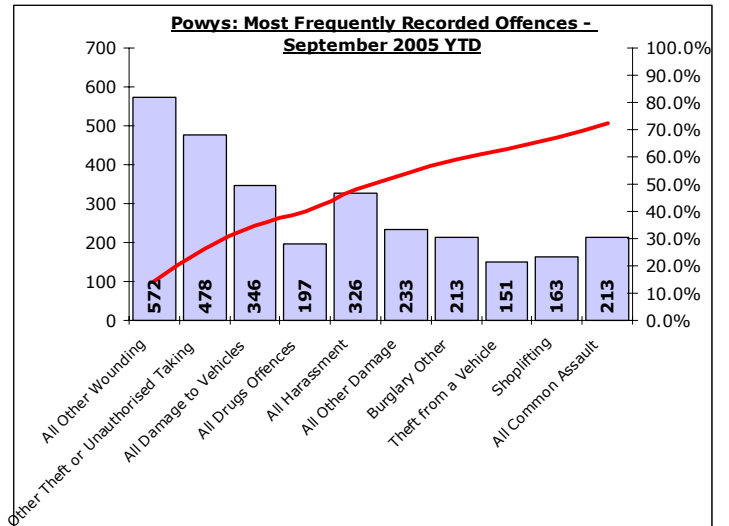
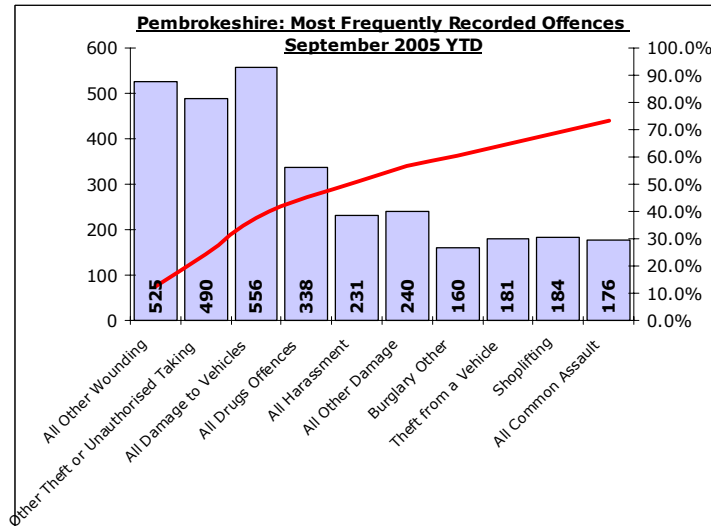
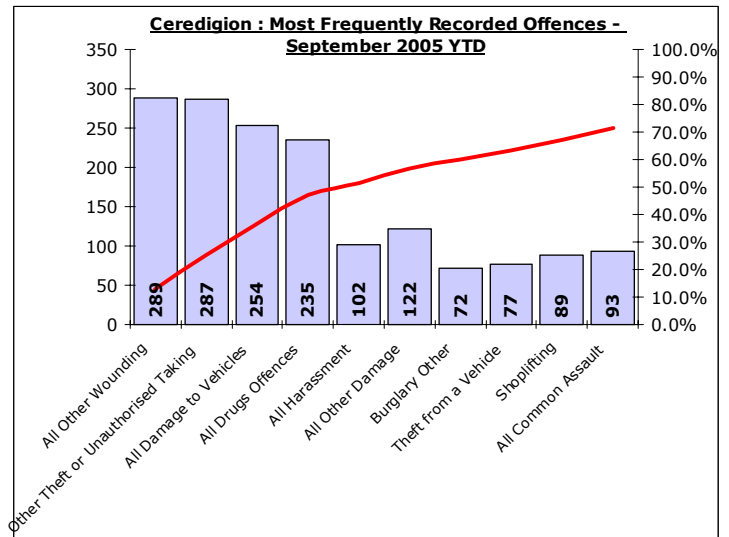
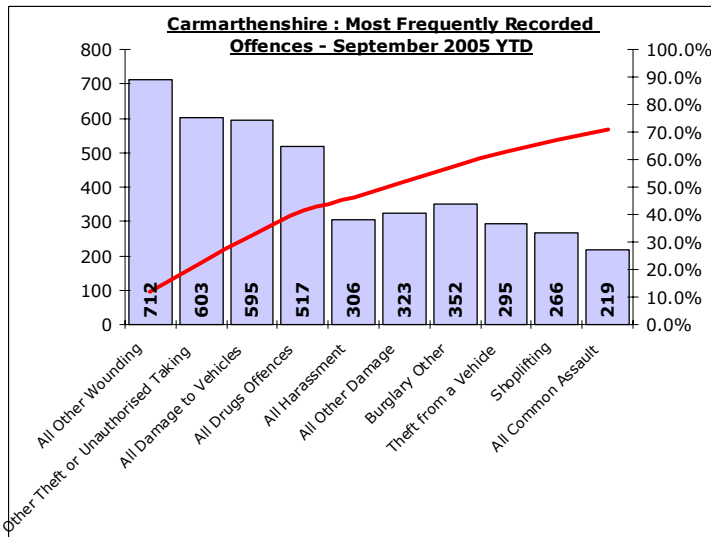
September 2005 YTD (Note : Divisonal profiles are in the same sequence as forces' most frequent categories – for comparison)



Recorded offences in each category in order of volume.

(Note these can include a number of sub-categories)

The cumulative contribution of these offence categories toward the total volume of offences recorded.

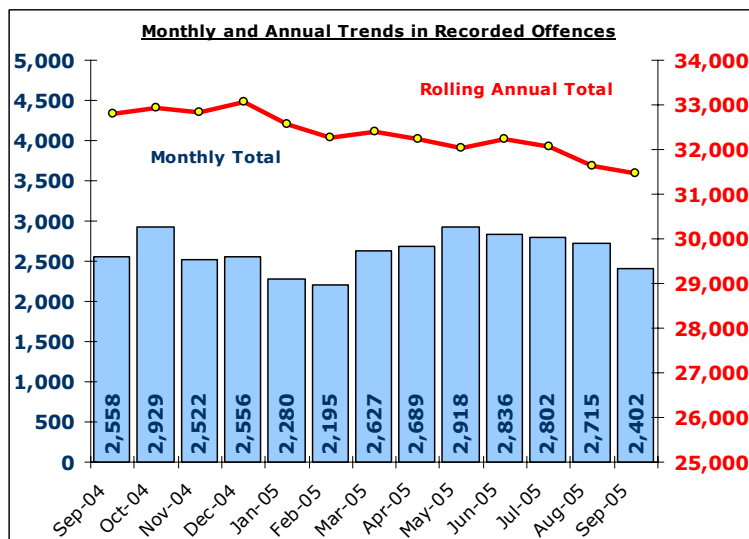


Total Recorded Crime

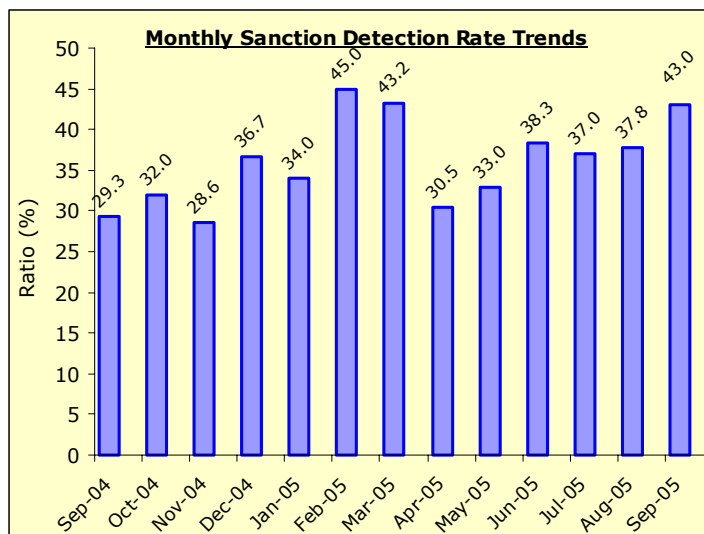
DYFED-POWYS POLICE

TARGET 2005/06 : NO TARGET

Recorded Crime Levels – September 2005

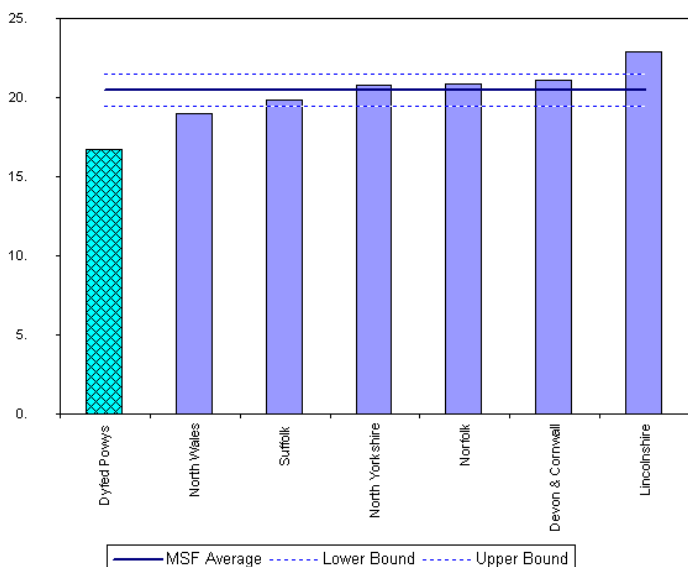


Monthly Sanction Detection Rates – September 2005

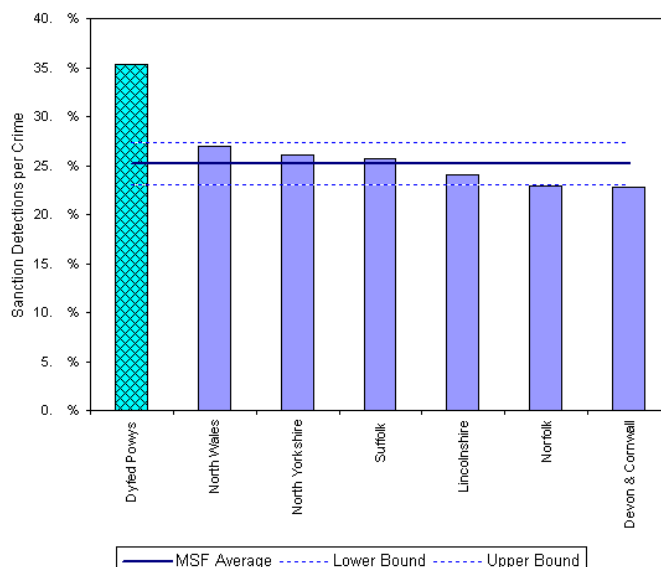


Total Recorded Crimes: September 2005 YTD	September 2005 YTD			Detection Rates YTD		Annual Trends - SPLY		
	Crimes	Sanction Dets	Total Dets	Sanction %	Total %	Crimes SPLY	Change	% Change
FORCE	16,362	5,965	6,943	36.5%	42.4%	17,299	- 937	- 5.4%
CARMS	5,891	2,102	2,446	35.7%	41.5%	6,666	- 775	- 11.6%
CERED	2,270	869	1,040	38.3%	45.8%	2,400	- 130	- 5.4%
PEMBS	4,201	1,491	1,807	35.5%	43.0%	4,472	- 271	- 6.1%
POWYS	4,000	1,503	1,650	37.6%	41.3%	3,761	+ 239	+ 6.4%

MSF – Crimes per 1000 Residents 01 June 2005 – 31 August 2005 (latest quarter)



MSF – Sanction detections (annual): 01 September 2004 – 31 August 2005



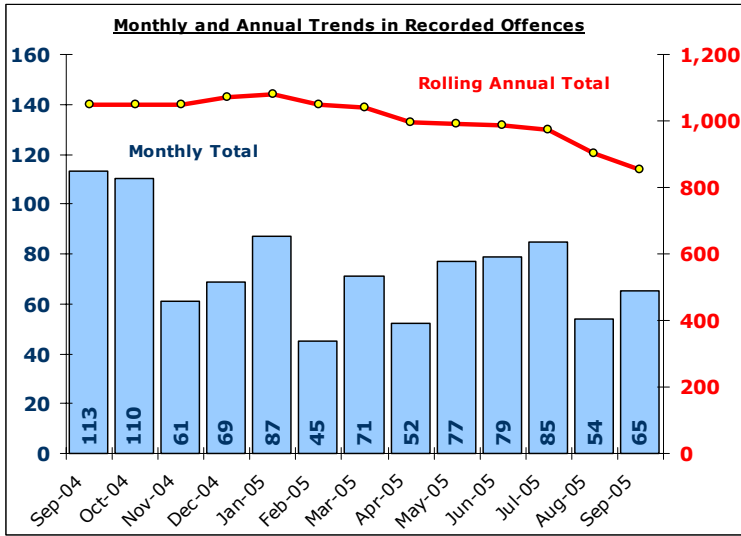
Bar chart MSF - Sanction Detections per Crime-Dyfed Powys-All Crime-01 Sep-2004 - 31 Aug 2005

Domestic Burglary

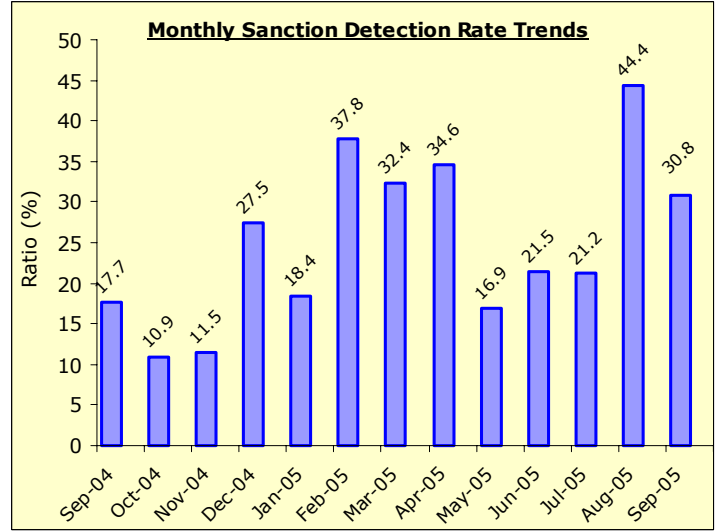
DYFED-POWYS POLICE

TARGET 2005/06 : 0% Increase in offences & 28% total detection rate

Recorded Crime Levels – September 2005

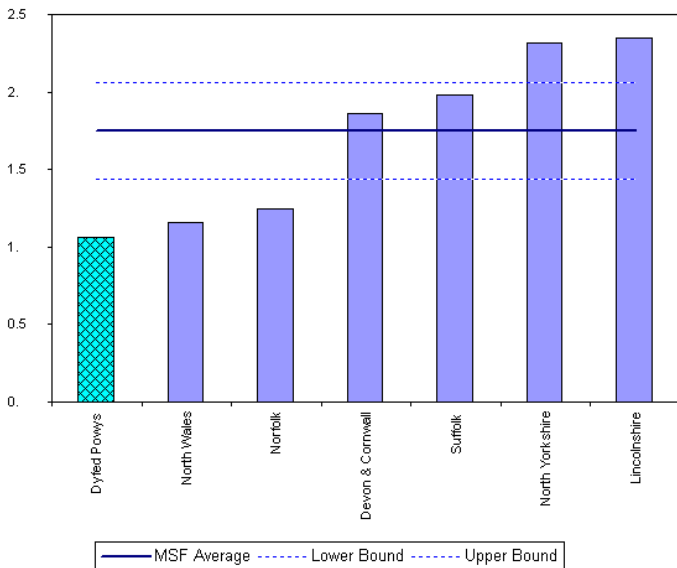


Monthly Sanction Detection Rates – September 2005

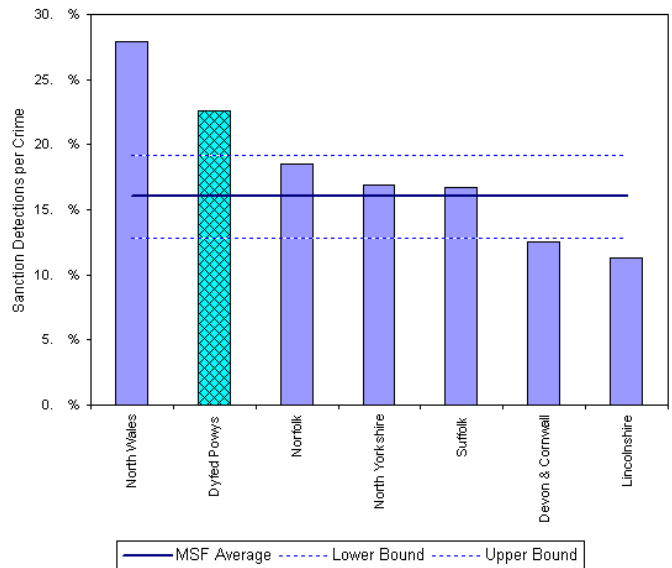


Total Domestic Burglary: September 2005 YTD	September 2005 YTD			Detection Rates YTD		Annual Trends - SPLY		
	Crimes	Sanction Dets	Total Dets	Sanction %	Total %	Crimes SPLY	Change	% Change
FORCE	412	110	115	26.7%	27.9%	599	- 187	- 31.2%
CARMS	175	48	48	27.4%	27.4%	267	- 92	- 34.5%
CERED	42	11	11	26.2%	26.2%	73	- 31	- 42.5%
PEMBS	95	26	31	27.4%	32.6%	147	- 52	- 35.4%
POWYS	100	25	25	25.0%	25.0%	112	- 12	- 10.7%

MSF – Crimes per 1000 Residents 01 June 2005 – 31 August 2005 (latest quarter)



MSF – Sanction detections (annual): 01 September 2004 – 31 August 2005



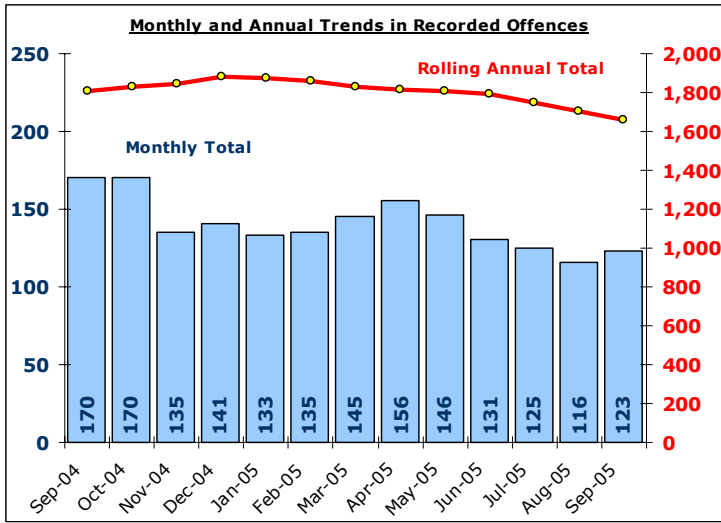
Bar chart MSF – Sanction Detections per Crime-Dyfed Powys-Domestic Burglary-01 Sep-2004 - 31 Aug-2005

Other Burglary

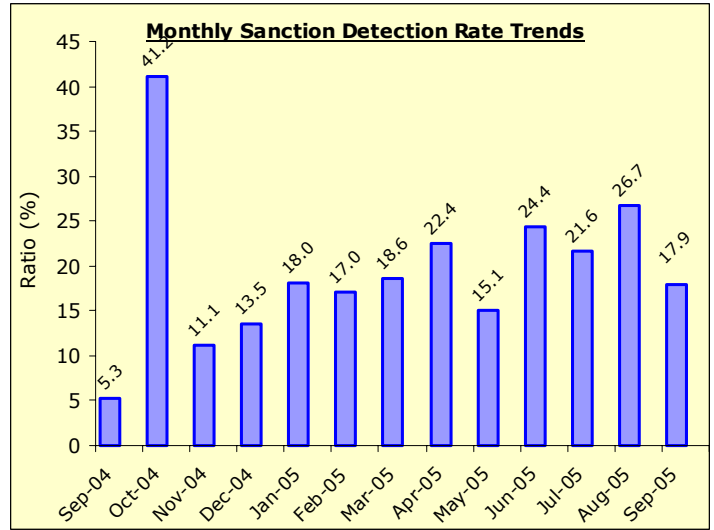
DYFED-POWYS POLICE

TARGET 2005/06 : No Target

Recorded Crime Levels – September 2005

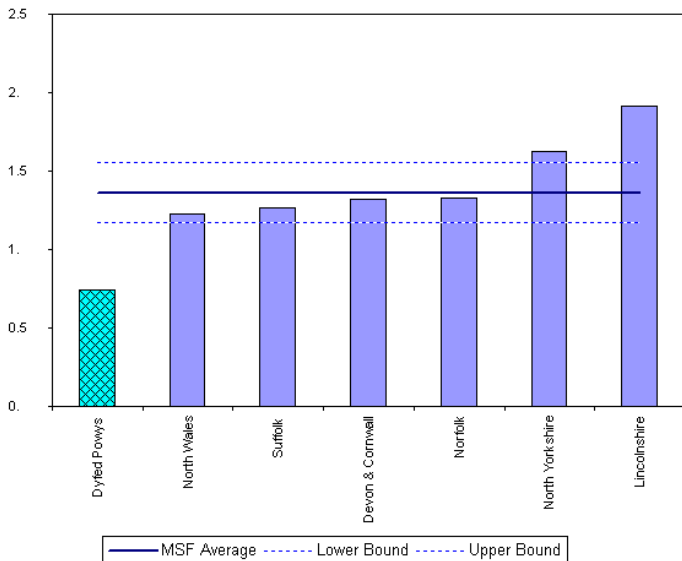


Monthly Sanction Detection Rates – September 2005

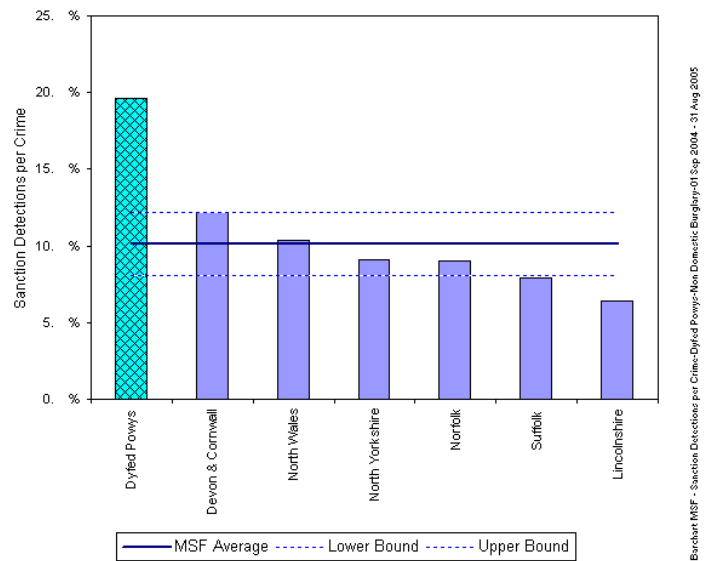


Total Other Burglary Crimes: September 2005 YTD	September 2005 YTD			Detection Rates YTD		Annual Trends - SPLY		
	Crimes	Sanction Dets	Total Dets	Sanction %	Total %	Crimes SPLY	Change	% Change
FORCE	797	169	175	21.2%	22.0%	974	- 177	- 18.2%
CARMS	352	68	70	19.3%	19.9%	473	- 121	- 25.6%
CERED	72	7	8	9.7%	11.1%	123	- 51	- 41.5%
PEMBS	160	38	40	23.8%	25.0%	169	- 9	- 5.3%
POWYS	213	56	57	26.3%	26.8%	209	+ 4	+ 1.9%

MSF – Crimes per 1000 Residents 01 June 2005 – 31 August 2005 (latest quarter)



MSF – Sanction detections (annual): 01 September 2004 – 31 August 2005

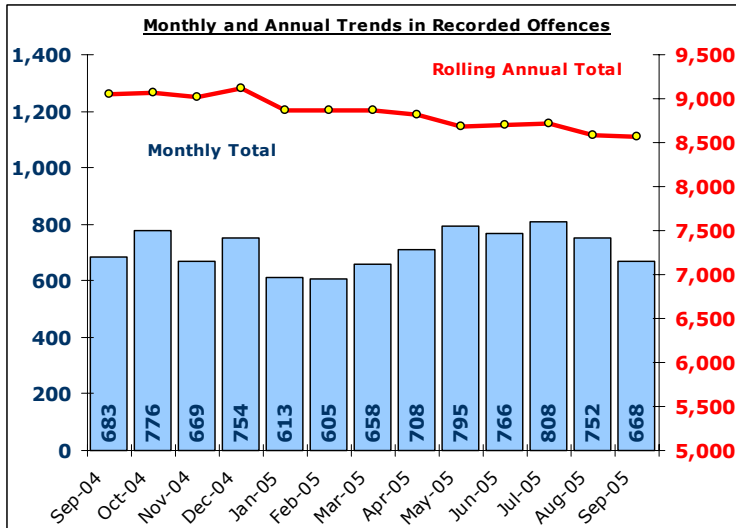


Total Violent Crime

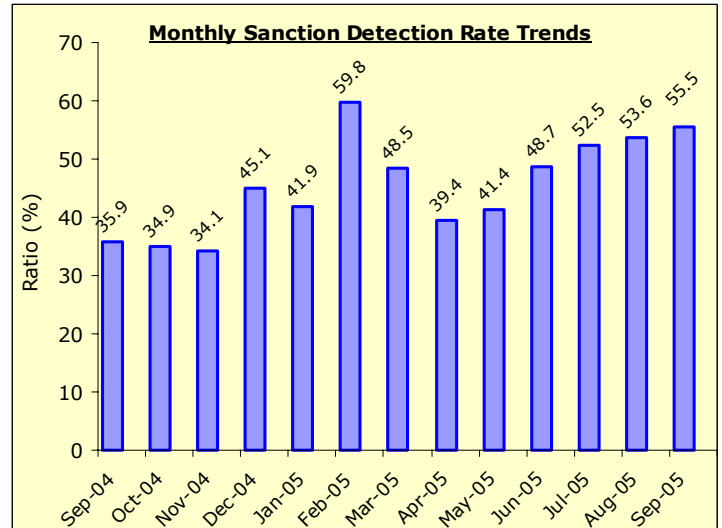
DYFED-POWYS POLICE

TARGET 2005/06 – 3% Reduction in offences & 60% total detection rate

Recorded Crime Levels – September 2005

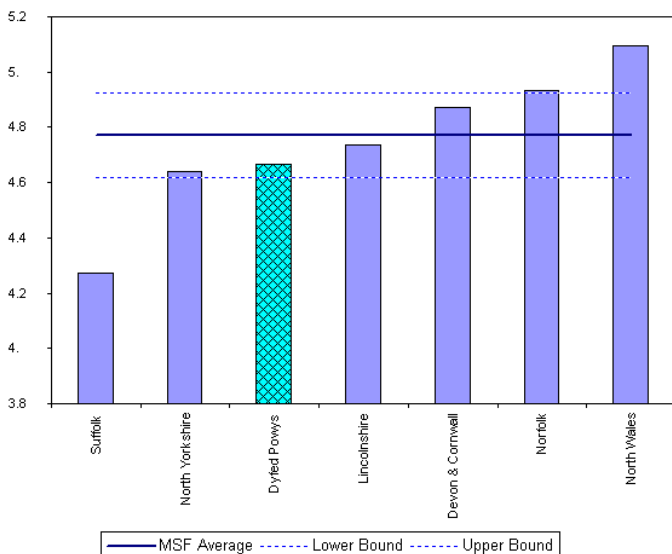


Monthly Sanction Detection Rates – September 2005

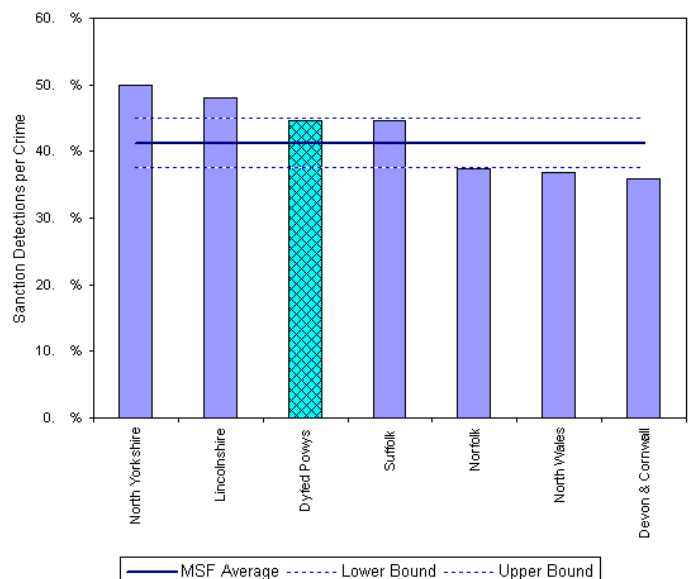


Total Violent Crimes: September 2005 YTD	September 2005 YTD			Detection Rates YTD		Annual Trends - SPLY		
	Crimes	Sanction Dets	Total Dets	Sanction %	Total %	Crimes SPLY	Change	% Change
FORCE	4,497	2,179	2,746	48.5%	61.1%	4,784	- 287	- 6.0%
CARMS	1,518	713	910	47.0%	59.9%	1,793	- 275	- 15.3%
CERED	595	299	404	50.3%	67.9%	710	- 115	- 16.2%
PEMBS	1,081	513	693	47.5%	64.1%	1,221	- 140	- 11.5%
POWYS	1,303	654	739	50.2%	56.7%	1,060	+ 243	+ 22.9%

MSF – Crimes per 1000 Residents 01 June 2005 – 31 August 2005 (latest quarter)



MSF – Sanction detections (annual): 01 June 2004 – 31 August 2005



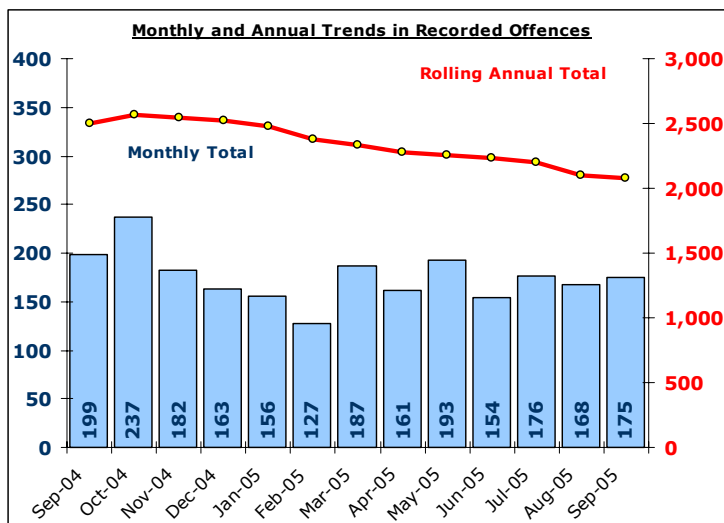
Barchart MSF - Sanction Detections per Crime-Dyfed Powys-Violent Crime-01 Sep-2004 - 31 Aug 2005

Total Vehicle Crime

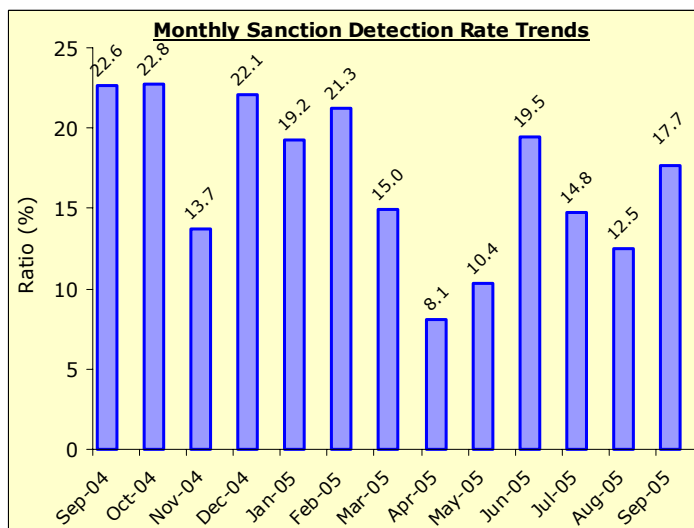
DYFED-POWYS POLICE

TARGET 2005/06 : 0% Increase in offences & 20% total detection rate

Recorded Crime Levels – September 2005

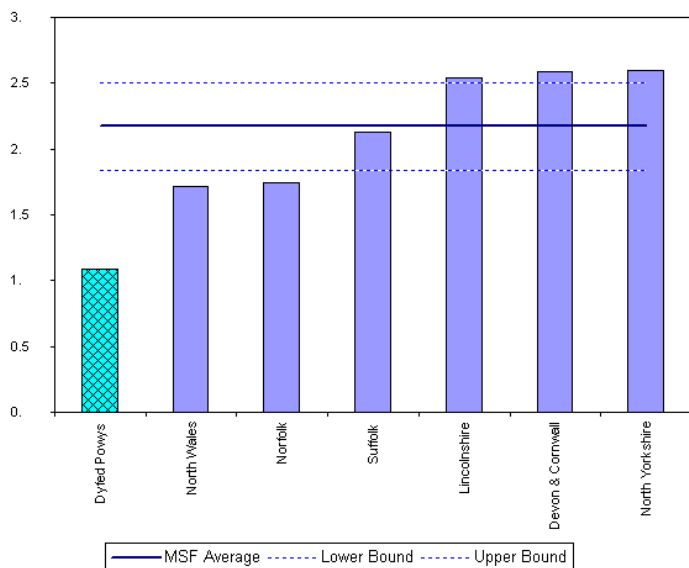


Monthly Sanction Detection Rates – September 2005

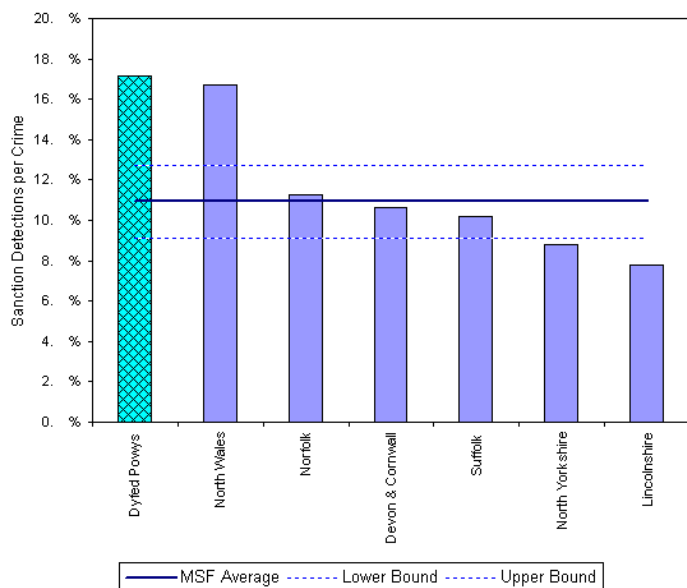


Total Vehicle Crimes: September 2005 YTD	September 2005 YTD			Detection Rates YTD		Annual Trends - SPL Y		
	Crimes	Sanction Dets	Total Dets	Sanction %	Total %	Crimes SPL Y	Change	% Change
FORCE	1,027	141	159	13.7%	15.5%	1,279	- 252	- 19.7%
CARMS	424	49	54	11.6%	12.7%	516	- 92	- 17.8%
CERED	112	21	24	18.8%	21.4%	117	- 5	- 4.3%
PEMBS	262	37	43	14.1%	16.4%	367	- 105	- 28.6%
POWYS	229	34	38	14.8%	16.6%	279	- 50	- 17.9%

MSF – Crimes per 1000 Residents 01 June 2005 – 31 August 2005 (latest quarter)



MSF – Sanction detections (annual): 01 September 2004 – 31 August 2005



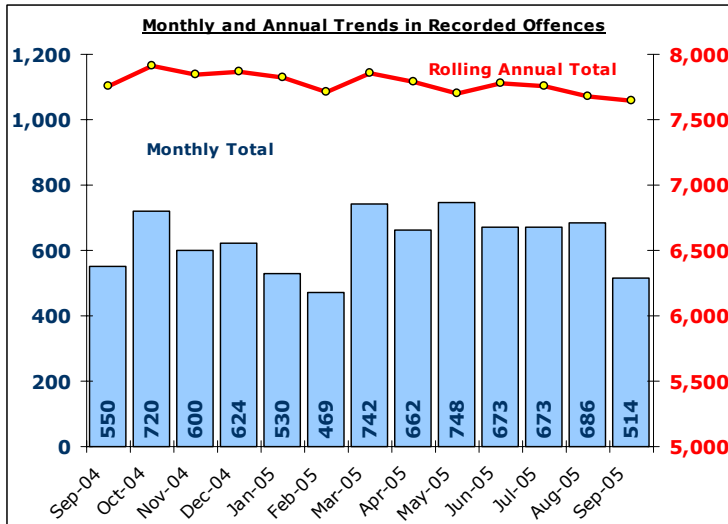
British MSF - Sanction Detections per Crime-Dyfed Powys-Vehicle Crimes (including Vehicle Interference) 01 Sep 2004 - 31 Aug 2005

Total Criminal Damage

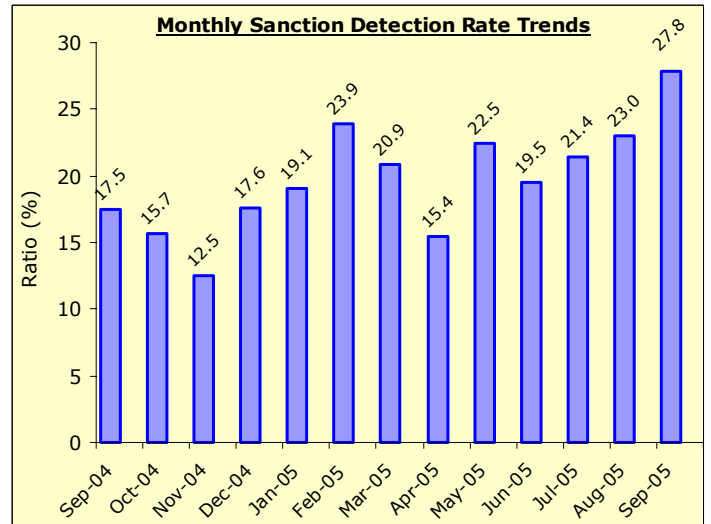
EXCLUDES ARSON % THREAT TO COMMIT CRIMINAL DAMAGE (HOC 56 & 59)

TARGET 2005/06 : NO TARGET

Recorded Crime Levels – September 2005

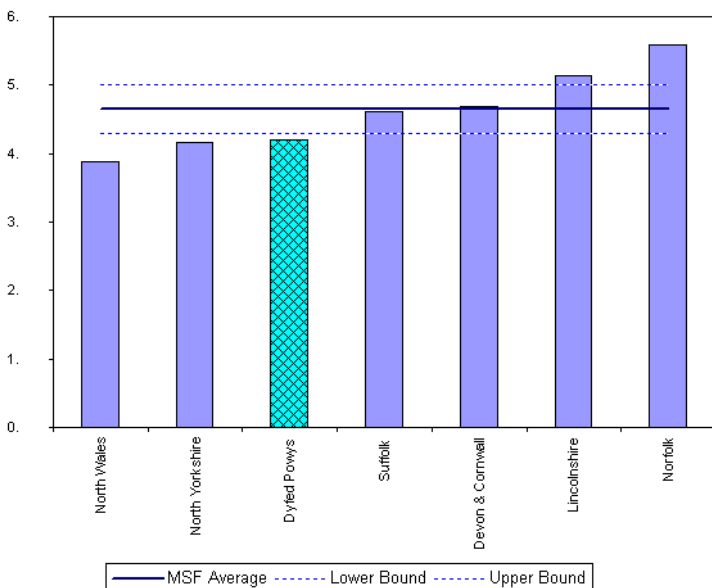


Monthly Sanction Detection Rates – September 2005

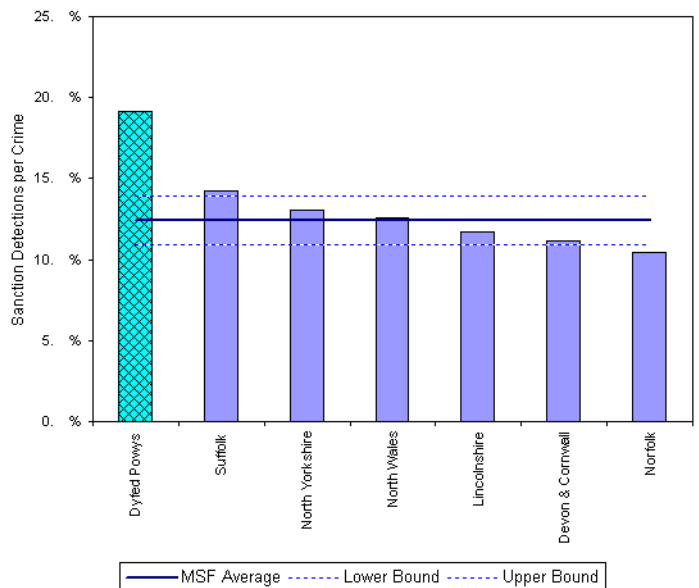


Total Criminal Damage: September 2005 YTD	September 2005 YTD			Detection Rates YTD		Annual Trends - SPLY		
	Crimes	Sanction Dets	Total Dets	Sanction %	Total %	Crimes SPLY	Change	% Change
FORCE	3,956	846	1,042	21.4%	26.3%	4,166	- 210	- 5.0%
CARMS	1,388	278	340	20.0%	24.5%	1,567	- 179	- 11.4%
CERED	558	99	123	17.7%	22.0%	492	+ 66	+ 13.4%
PEMBS	1,145	263	334	23.0%	29.2%	1,198	- 53	- 4.4%
POWYS	865	206	245	23.8%	28.3%	909	- 44	- 4.8%

MSF – Crimes per 1000 Residents 01 June 2005 – 31 August 2005 (latest quarter)



MSF – Sanction detections (annual): 01 September 2004 – 31 August 2005

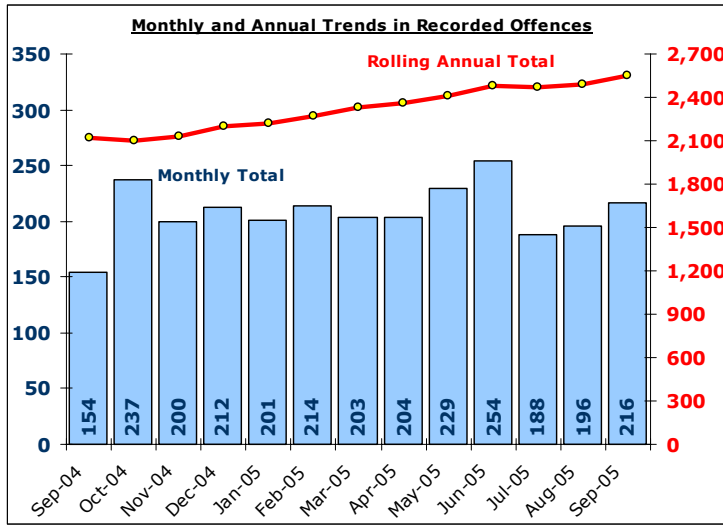


Total Drug Offences

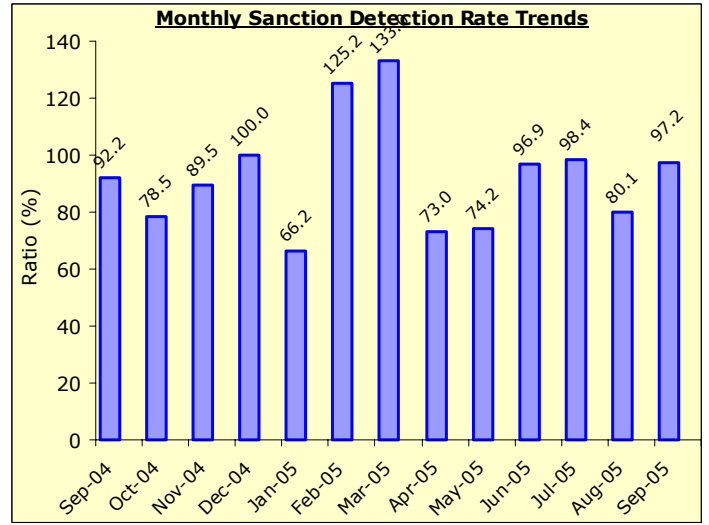
DYFED-POWYS POLICE

TARGET 2005/06 : NO TARGET

Recorded Crime Levels – September 2005

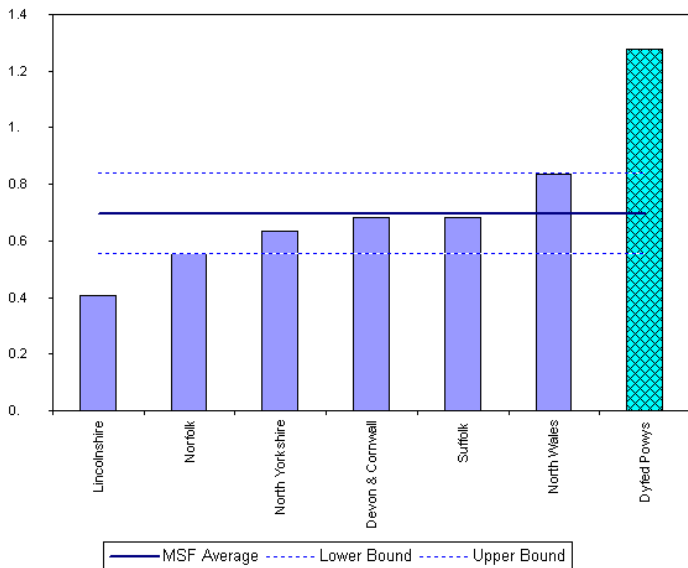


Monthly Sanction Detection Rates – September

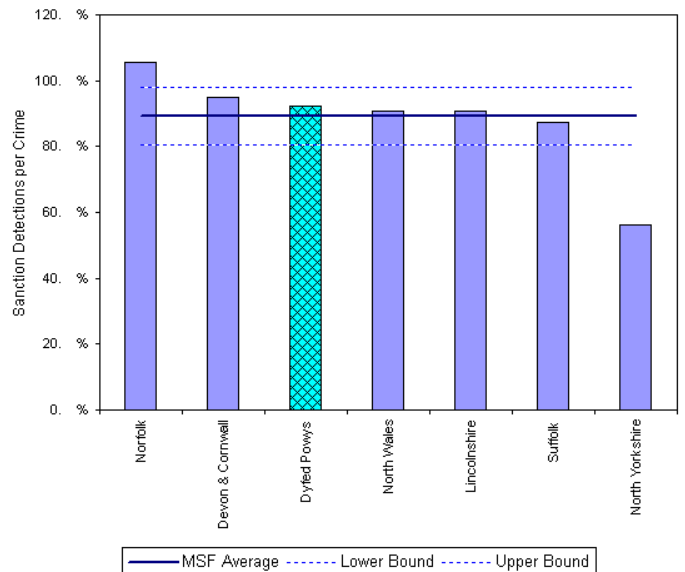


Total Drug Offences: September 2005 YTD	September 2005 YTD			Detection Rates YTD		Annual Trends - SPLY		
	Crimes	Sanction Dets	Total Dets	Sanction %	Total %	Crimes SPLY	Change	% Change
FORCE	1,287	1,117	1,197	86.8%	93.0%	1,060	+ 227	+ 21.4%
CARMS	517	444	493	85.9%	95.4%	380	+ 137	+ 36.1%
CERED	235	216	223	91.9%	94.9%	203	+ 32	+ 15.8%
PEMBS	338	281	298	83.1%	88.2%	289	+ 49	+ 17.0%
POWYS	197	176	183	89.3%	92.9%	188	+ 9	+ 4.8%

MSF – Crimes per 1000 Residents 01 June 2005 – 31 August 2005 (latest quarter)



MSF – Sanction detections (annual): 01 September 2004 – 31 August 2005



Bar chart MSF - Sanction Detections per Crime-Dyfed Powys-Drug Offences-01 Sep 2004 - 31 Aug 2005

Section Level Sanction Detection Summary

DYFED-POWYS POLICE

TARGET 2005/06 : 31% SANCTION DETECTION RATE

Sanction Detections Performance Sept 2005 YTD: Total Recorded Crimes

Sanction Detection Rate	Recorded	Detected	Det Ratio	Recorded	Diff	% Change
THE FORCE	16,362	5,965	36.5%	17,299	- 937	- 5.4%
Carmarthenshire	5,891	2,102	35.7%	6,666	- 775	- 11.6%
Ammanford (AA)	735	331	45.0%	780	- 45	- 5.8%
Carmarthen (AC)	1,419	584	41.2%	1,592	- 173	- 10.9%
Llanelli (AL)	2,920	906	31.0%	3,448	- 528	- 15.3%
Towy Gwendraeth (AT)	817	281	34.4%	846	- 29	- 3.4%
Ceredigion	2,270	869	38.3%	2,400	- 130	- 5.4%
Aberystwyth (BA)	1,203	493	41.0%	1,194	+ 9	+ 0.8%
Aberaeron (BB)	244	81	33.2%	321	- 77	- 24.0%
Cardigan (BC)	545	191	35.0%	583	- 38	- 6.5%
Lampeter (BL)	278	104	37.4%	302	- 24	- 7.9%
Pembrokeshire	4,201	1,491	35.5%	4,472	- 271	- 6.1%
Fishguard (CF)	483	160	33.1%	527	- 44	- 8.3%
Haverfordwest (CH)	1,020	340	33.3%	1,203	- 183	- 15.2%
Milford Haven (CM)	795	316	39.7%	925	- 130	- 14.1%
Pembroke Dock (CP)	1,086	413	38.0%	904	+ 182	+ 20.1%
Tenby (CT)	817	262	32.1%	913	- 96	- 10.5%
Powys	4,000	1,503	37.6%	3,761	+ 239	+ 6.4%
Brecon (DB)	1,044	374	35.8%	892	+ 152	+ 17.0%
Llandrindod Wells (DL)	724	283	39.1%	767	- 43	- 5.6%
Newtown (DN)	1,226	443	36.1%	1,023	+ 203	+ 19.8%
Welshpool (DW)	699	284	40.6%	730	- 31	- 4.2%
Ystradgynlais (DY)	307	119	38.8%	349	- 42	- 12.0%

Sanction Detection Performance Sept 2005 YTD: Domestic Burglary, Violent Crime & Vehicle Crime

Sanction Detections	Total Domestic Burglary			Total Violent Crime			Total Vehicle Crime		
	Recorded	Detected	Det Ratio	Recorded	Detected	Det Ratio	Recorded	Detected	Det Ratio
THE FORCE	412	110	26.7%	4,497	2,179	48.5%	1,027	141	13.7%
Carmarthenshire	175	48	27.4%	1,518	713	47.0%	424	49	11.6%
Ammanford (AA)	14	9	64.3%	146	66	45.2%	45	7	15.6%
Carmarthen (AC)	27	7	25.9%	393	222	56.5%	72	7	9.7%
Llanelli (AL)	102	19	18.6%	786	324	41.2%	249	28	11.2%
Towy Gwendraeth (AT)	32	13	40.6%	193	101	52.3%	58	7	12.1%
Ceredigion	42	11	26.2%	595	299	50.3%	112	21	18.8%
Aberystwyth (BA)	27	7	25.9%	324	183	56.5%	57	9	15.8%
Aberaeron (BB)	2	1	50.0%	62	30	48.4%	15	1	6.7%
Cardigan (BC)	9	2	22.2%	138	60	43.5%	24	5	20.8%
Lampeter (BL)	4	1	25.0%	71	26	36.6%	16	6	37.5%
Pembrokeshire	95	26	27.4%	1,081	513	47.5%	262	37	14.1%
Fishguard (CF)	9	3	33.3%	116	50	43.1%	36	3	8.3%
Haverfordwest (CH)	30	6	20.0%	318	131	41.2%	38	4	10.5%
Milford Haven (CM)	21	8	38.1%	240	114	47.5%	37	9	24.3%
Pembroke Dock (CP)	21	4	19.0%	233	116	49.8%	68	8	11.8%
Tenby (CT)	14	5	35.7%	174	102	58.6%	83	13	15.7%
Powys	100	25	25.0%	1,303	654	50.2%	229	34	14.8%
Brecon (DB)	17	2	11.8%	328	184	56.1%	66	5	7.6%
Llandrindod Wells (DL)	23	9	39.1%	255	138	54.1%	37	5	13.5%
Newtown (DN)	38	10	26.3%	426	174	40.8%	54	8	14.8%
Welshpool (DW)	18	4	22.2%	197	108	54.8%	45	12	26.7%
Ystradgynlais (DY)	4	0	0.0%	97	50	51.5%	27	4	14.8%

Target Contribution Summary - Carmarthenshire

DYFED-POWYS POLICE

GREEN/RED indicates current performance **consistent** or **not consistent** with force target reduction & detection rate

CARMARTHENSIRE		April-September YTD		Last Year		Indicator
CRIME	Performance	Indicator	Performance	Indicator	Change & Detection	
Total Crime Recorded (per 1,000 population)	5891	34.1	6668	38.6	-11.7%	
Total Detections (% rate)	2446	41.5%	2557	38.3%	41.5%	
Burglary Dwelling (per 1,000 households)	175	2.4	267	3.7	-34.5%	
Total Detections (% rate)	48	27.4%	67	25.1%	27.4%	
Total Violent Crime (per 1,000 population)	1518	8.8	1794	10.4	-15.4%	
Total Detections (% rate)	910	59.9%	1015	56.6%	59.9%	
Autocrime per (1,000 population)	424	2.5	516	3.0	-17.8%	
Total Detections (% rate)	54	12.7%	95	18.4%	12.7%	
Ammanford		April-September YTD		Last Year		Indicator
CRIME	Performance	Indicator	Performance	Indicator	Change & Detection	
Total Crime Recorded (per 1,000 population)	735	22.5	780	23.9	-5.8%	
Total Detections (% rate)	372	50.6%	361	46.3%	50.6%	
Burglary Dwelling (per 1,000 households)	14	1.0	23	1.7	-39.1%	
Total Detections (% rate)	9	64.3%	8	34.8%	64.3%	
Total Violent Crime (per 1,000 population)	146	4.5	202	6.2	-27.7%	
Total Detections (% rate)	83	56.8%	124	61.4%	56.8%	
Autocrime per (1,000 population)	45	1.4	47	1.4	-4.3%	
Total Detections (% rate)	8	17.8%	7	14.9%	17.8%	
Carmarthen		April-September YTD		Last Year		Indicator
CRIME	Performance	Indicator	Performance	Indicator	Change & Detection	
Total Crime Recorded (per 1,000 population)	1419	28.7	1592	32.2	-10.9%	
Total Detections (% rate)	655	46.2%	702	44.1%	46.2%	
Burglary Dwelling (per 1,000 households)	27	1.3	38	1.8	-28.9%	
Total Detections (% rate)	7	25.9%	6	15.8%	25.9%	
Total Violent Crime (per 1,000 population)	393	7.9	467	9.4	-15.8%	
Total Detections (% rate)	270	68.7%	287	61.5%	68.7%	
Autocrime per (1,000 population)	72	1.5	73	1.5	-1.4%	
Total Detections (% rate)	7	9.7%	9	12.3%	9.7%	
Llanelli		April-September YTD		Last Year		Indicator
CRIME	Performance	Indicator	Performance	Indicator	Change & Detection	
Total Crime Recorded (per 1,000 population)	2920	48.3	3450	57.1	-15.4%	
Total Detections (% rate)	1100	37.7%	1171	33.9%	37.7%	
Burglary Dwelling (per 1,000 households)	102	3.9	161	6.2	-36.6%	
Total Detections (% rate)	19	18.6%	40	24.8%	18.6%	
Total Violent Crime (per 1,000 population)	786	13.0	906	15.0	-13.2%	
Total Detections (% rate)	439	55.9%	476	52.5%	55.9%	
Autocrime per (1,000 population)	249	4.1	322	5.3	-22.7%	
Total Detections (% rate)	31	12.4%	69	21.4%	12.4%	
Towy/Gwenraeth		April-September YTD		Last Year		Indicator
CRIME	Performance	Indicator	Performance	Indicator	Change & Detection	
Total Crime Recorded (per 1,000 population)	817	27.0	846	28.0	-3.4%	
Total Detections (% rate)	319	39.0%	323	38.2%	39.0%	
Burglary Dwelling (per 1,000 households)	32	2.6	45	3.6	-28.9%	
Total Detections (% rate)	13	40.6%	13	28.9%	40.6%	
Total Violent Crime (per 1,000 population)	193	6.4	219	7.2	-11.9%	
Total Detections (% rate)	118	61.1%	128	58.4%	61.1%	
Autocrime per (1,000 population)	58	1.9	74	2.4	-21.6%	
Total Detections (% rate)	8	13.8%	10	13.5%	13.8%	

Target Contribution Summary - Ceredigion

DYFED-POWYS POLICE

GREEN/RED indicates current performance **consistent** or **not consistent** with force target reduction & detection rate

CEREDIGION		April-September YTD		Last Year		Indicator
CRIME	Performance	Indicator	Performance	Indicator	Change & Detection	
Total Crime Recorded (per 1,000 population)	2270	30.3	2400	32.0	-5.4%	
Total Detections (% rate)	1040	45.8%	979	40.8%	45.8%	
Burglary Dwelling (per 1,000 households)	42	1.4	73	2.4	-42.5%	
Total Detections (% rate)	11	26.2%	14	19.2%	26.2%	
Total Violent Crime (per 1,000 population)	595	7.9	710	9.5	-16.2%	
Total Detections (% rate)	404	67.9%	344	48.5%	67.9%	
Autocrime per (1,000 population)	112	1.5	117	1.6	-4.3%	
Total Detections (% rate)	24	21.4%	21	17.9%	21.4%	
Ceredigion North		April-September YTD		Last Year		Indicator
CRIME	Performance	Indicator	Performance	Indicator	Change & Detection	
Total Crime Recorded (per 1,000 population)	1203	37.8	1193	37.5	0.8%	
Total Detections (% rate)	554	46.1%	548	45.9%	46.1%	
Burglary Dwelling (per 1,000 households)	27	2.2	25	2.0	8.0%	
Total Detections (% rate)	7	25.9%	6	24.0%	25.9%	
Total Violent Crime (per 1,000 population)	324	10.2	347	10.9	-6.6%	
Total Detections (% rate)	224	69.1%	185	53.3%	69.1%	
Autocrime per (1,000 population)	57	1.8	48	1.5	18.8%	
Total Detections (% rate)	10	17.5%	9	18.8%	17.5%	
Ceredigion South		April-September YTD		Last Year		Indicator
CRIME	Performance	Indicator	Performance	Indicator	Change & Detection	
Total Crime Recorded (per 1,000 population)	1067	24.9	1207	28.1	-11.6%	
Total Detections (% rate)	486	45.5%	431	35.7%	45.5%	
Burglary Dwelling (per 1,000 households)	15	0.8	48	2.6	-68.8%	
Total Detections (% rate)	4	26.7%	8	16.7%	26.7%	
Total Violent Crime (per 1,000 population)	271	6.3	363	8.5	-25.3%	
Total Detections (% rate)	180	66.4%	159	43.8%	66.4%	
Autocrime per (1,000 population)	55	1.3	69	1.6	-20.3%	
Total Detections (% rate)	14	25.5%	12	17.4%	25.5%	

Ceredigion South is an area used for comparison purposes only. It incorporates the three section areas of Lampeter/Aberaeron and Cardigan. Details on these three discrete areas is also included here for information.

Aberaeron		April-September YTD		Last Year		Indicator
CRIME	Performance	Indicator	Performance	Indicator	Change & Detection	
Total Crime Recorded (per 1,000 population)	244	19.2	321	25.3	-24.0%	
Total Detections (% rate)	94	38.5%	109	34.0%	38.5%	
Burglary Dwelling (per 1,000 households)	2	0.4	15	2.7	-86.7%	
Total Detections (% rate)	1	50.0%	3	20.0%	50.0%	
Total Violent Crime (per 1,000 population)	62	4.9	90	7.1	-31.1%	
Total Detections (% rate)	32	51.6%	40	44.4%	51.6%	
Autocrime per (1,000 population)	15	1.2	18	1.4	-16.7%	
Total Detections (% rate)	2	13.3%	4	22.2%	13.3%	
Cardigan		April-September YTD		Last Year		Indicator
CRIME	Performance	Indicator	Performance	Indicator	Change & Detection	
Total Crime Recorded (per 1,000 population)	545	28.9	583	30.9	-6.5%	
Total Detections (% rate)	245	45.0%	218	37.4%	45.0%	
Burglary Dwelling (per 1,000 households)	9	1.1	18	2.2	-50.0%	
Total Detections (% rate)	2	22.2%	3	16.7%	22.2%	
Total Violent Crime (per 1,000 population)	138	7.3	177	9.4	-22.0%	
Total Detections (% rate)	98	71.0%	82	46.3%	71.0%	
Autocrime per (1,000 population)	24	1.3	30	1.6	-20.0%	
Total Detections (% rate)	5	20.8%	5	16.7%	20.8%	
Lampeter		April-September YTD		Last Year		Indicator
CRIME	Performance	Indicator	Performance	Indicator	Change & Detection	
Total Crime Recorded (per 1,000 population)	278	24.0	303	26.1	-8.3%	
Total Detections (% rate)	147	52.9%	104	34.3%	52.9%	
Burglary Dwelling (per 1,000 households)	4	0.8	15	3.2	-73.3%	
Total Detections (% rate)	1	25.0%	2	13.3%	25.0%	
Total Violent Crime (per 1,000 population)	71	6.1	96	8.3	-26.0%	
Total Detections (% rate)	50	70.4%	37	38.5%	70.4%	
Autocrime per (1,000 population)	16	1.4	21	1.8	-23.8%	
Total Detections (% rate)	7	43.8%	3	14.3%	43.8%	

Target Contribution Summary - Pembrokeshire

DYFED-POWYS POLICE

GREEN/RED indicates current performance **consistent** or **not consistent** with force target reduction & total detection rate

PEMBROKESHIRE		April-September YTD		Last Year		Indicator
CRIME	Performance	Indicator	Performance	Indicator	Change & Detection	
Total Crime Recorded (per 1,000 population)	4201	36.8	4474	39.2	-6.1%	
Total Detections (% rate)	1807	43.0%	1802	40.3%	43.0%	
Burglary Dwelling (per 1,000 households)	95	2.0	147	3.1	-35.4%	
Total Detections (% rate)	30	31.6%	34	23.1%	31.6%	
Total Violent Crime (per 1,000 population)	1081	9.5	1222	10.7	-11.5%	
Total Detections (% rate)	693	64.1%	766	62.7%	64.1%	
Autocrime per (1,000 population)	262	2.3	367	3.2	-28.6%	
Total Detections (% rate)	43	16.4%	68	18.5%	16.4%	
Fishguard		April-September YTD		Last Year		Indicator
CRIME	Performance	Indicator	Performance	Indicator	Change & Detection	
Total Crime Recorded (per 1,000 population)	483	18.2	527	19.9	-8.3%	
Total Detections (% rate)	209	43.3%	226	42.9%	43.3%	
Burglary Dwelling (per 1,000 households)	9	0.8	19	1.7	-52.6%	
Total Detections (% rate)	4	44.4%	4	21.1%	44.4%	
Total Violent Crime (per 1,000 population)	116	4.4	119	4.5	-2.5%	
Total Detections (% rate)	79	68.1%	87	73.1%	68.1%	
Autocrime per (1,000 population)	36	1.4	47	1.8	-23.4%	
Total Detections (% rate)	5	13.9%	12	25.5%	13.9%	
Haverfordwest		April-September YTD		Last Year		Indicator
CRIME	Performance	Indicator	Performance	Indicator	Change & Detection	
Total Crime Recorded (per 1,000 population)	1020	51.0	1203	60.2	-15.2%	
Total Detections (% rate)	417	40.9%	518	43.1%	40.9%	
Burglary Dwelling (per 1,000 households)	30	3.6	44	5.2	-31.8%	
Total Detections (% rate)	8	26.7%	8	18.2%	26.7%	
Total Violent Crime (per 1,000 population)	318	15.9	369	18.5	-13.8%	
Total Detections (% rate)	180	56.6%	233	63.1%	56.6%	
Autocrime per (1,000 population)	38	1.9	84	4.2	-54.8%	
Total Detections (% rate)	4	10.5%	13	15.5%	10.5%	
Milford Haven		April-September YTD		Last Year		Indicator
CRIME	Performance	Indicator	Performance	Indicator	Change & Detection	
Total Crime Recorded (per 1,000 population)	795	32.6	926	38.0	-14.1%	
Total Detections (% rate)	374	47.0%	401	43.3%	47.0%	
Burglary Dwelling (per 1,000 households)	21	2.1	21	2.1	0.0%	
Total Detections (% rate)	10	47.6%	9	42.9%	47.6%	
Total Violent Crime (per 1,000 population)	240	9.8	247	10.1	-2.8%	
Total Detections (% rate)	152	63.3%	160	64.8%	63.3%	
Autocrime per (1,000 population)	37	1.5	65	2.7	-43.1%	
Total Detections (% rate)	13	35.1%	26	40.0%	35.1%	
Pembroke Dock		April-September YTD		Last Year		Indicator
CRIME	Performance	Indicator	Performance	Indicator	Change & Detection	
Total Crime Recorded (per 1,000 population)	1086	56.8	904	47.3	20.1%	
Total Detections (% rate)	511	47.1%	329	36.4%	47.1%	
Burglary Dwelling (per 1,000 households)	21	2.6	29	3.6	-27.6%	
Total Detections (% rate)	4	19.0%	6	20.7%	19.0%	
Total Violent Crime (per 1,000 population)	233	12.2	252	13.2	-7.5%	
Total Detections (% rate)	161	69.1%	140	55.6%	69.1%	
Autocrime per (1,000 population)	68	3.6	101	5.3	-32.7%	
Total Detections (% rate)	8	11.8%	7	6.9%	11.8%	
Tenby		April-September YTD		Last Year		Indicator
CRIME	Performance	Indicator	Performance	Indicator	Change & Detection	
Total Crime Recorded (per 1,000 population)	817	33.8	914	37.8	-10.6%	
Total Detections (% rate)	296	36.2%	328	35.9%	36.2%	
Burglary Dwelling (per 1,000 households)	14	1.4	34	3.3	-58.8%	
Total Detections (% rate)	5	35.7%	7	20.6%	35.7%	
Total Violent Crime (per 1,000 population)	174	7.2	235	9.7	-26.0%	
Total Detections (% rate)	121	69.5%	146	62.1%	69.5%	
Autocrime per (1,000 population)	83	3.4	70	2.9	18.6%	
Total Detections (% rate)	13	15.7%	10	14.3%	15.7%	

Target Contribution Summary - Powys

DYFED-POWYS POLICE

GREEN/RED indicates current performance **consistent** or **not consistent** with force target reduction & detection rate

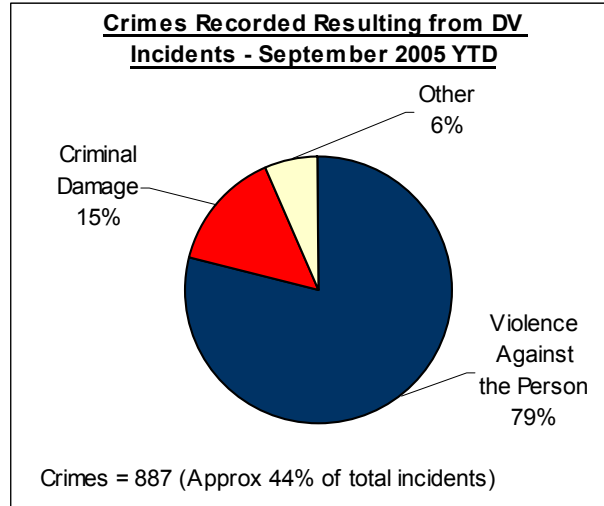
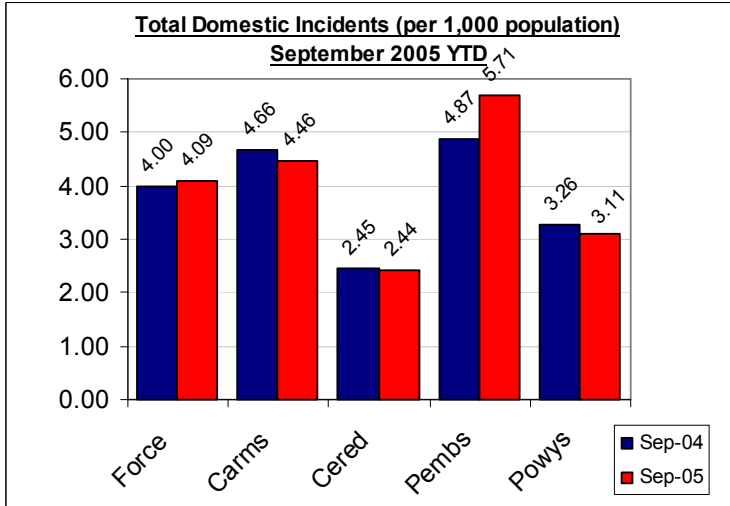
POWYS		April-September YTD		Last Year		Indicator
CRIME		Performance	Indicator	Performance	Indicator	Change & Detection
Total Crime Recorded (per 1,000 population)	4000	31.7	3761	29.8		6.4%
Total Detections (% rate)	1650	41.3%	1508	40.1%		41.3%
Burglary Dwelling (per 1,000 households)	100	1.9	112	2.1		-10.7%
Total Detections (% rate)	25	25.0%	24	21.4%		25.0%
Total Violent Crime (per 1,000 population)	1303	10.3	1060	8.4		22.9%
Total Detections (% rate)	739	56.7%	642	60.6%		56.7%
Autocrime per (1,000 population)	229	1.8	279	2.2		-17.9%
Total Detections (% rate)	38	16.6%	63	22.6%		16.6%
Brecon		April-September YTD		Last Year		Indicator
CRIME		Performance	Indicator	Performance	Indicator	Change & Detection
Total Crime Recorded (per 1,000 population)	1044	40.8	892	34.9		17.0%
Total Detections (% rate)	412	39.5%	328	36.8%		39.5%
Burglary Dwelling (per 1,000 households)	17	1.6	18	1.7		-5.6%
Total Detections (% rate)	2	11.8%	5	27.8%		11.8%
Total Violent Crime (per 1,000 population)	328	12.8	256	10.0		28.1%
Total Detections (% rate)	206	62.8%	150	58.6%		62.8%
Autocrime per (1,000 population)	66	2.6	71	2.8		-7.0%
Total Detections (% rate)	5	7.6%	5	7.0%		7.6%
Llandrindod Wells		April-September YTD		Last Year		Indicator
CRIME		Performance	Indicator	Performance	Indicator	Change & Detection
Total Crime Recorded (per 1,000 population)	724	25.7	767	27.2		-5.6%
Total Detections (% rate)	318	43.9%	343	44.7%		43.9%
Burglary Dwelling (per 1,000 households)	23	1.9	33	2.7		-30.3%
Total Detections (% rate)	9	39.1%	6	18.2%		39.1%
Total Violent Crime (per 1,000 population)	255	9.0	225	8.0		13.3%
Total Detections (% rate)	158	62.0%	141	62.7%		62.0%
Autocrime per (1,000 population)	37	1.3	55	1.9		-32.7%
Total Detections (% rate)	7	18.9%	7	12.7%		18.9%
Newtown		April-September YTD		Last Year		Indicator
CRIME		Performance	Indicator	Performance	Indicator	Change & Detection
Total Crime Recorded (per 1,000 population)	1226	34.9	1023	29.1		19.8%
Total Detections (% rate)	479	39.1%	361	35.3%		39.1%
Burglary Dwelling (per 1,000 households)	38	2.5	45	3.0		-15.6%
Total Detections (% rate)	10	26.3%	6	13.3%		26.3%
Total Violent Crime (per 1,000 population)	426	12.1	281	8.0		51.6%
Total Detections (% rate)	198	46.5%	173	61.6%		46.5%
Autocrime per (1,000 population)	54	1.5	49	1.4		10.2%
Total Detections (% rate)	8	14.8%	15	30.6%		14.8%
Welshpool		April-September YTD		Last Year		Indicator
CRIME		Performance	Indicator	Performance	Indicator	Change & Detection
Total Crime Recorded (per 1,000 population)	699	27.4	730	28.6		-4.2%
Total Detections (% rate)	304	43.5%	317	43.4%		43.5%
Burglary Dwelling (per 1,000 households)	18	1.7	12	1.1		50.0%
Total Detections (% rate)	4	22.2%	3	25.0%		22.2%
Total Violent Crime (per 1,000 population)	197	7.7	201	7.9		-2.0%
Total Detections (% rate)	120	60.9%	120	59.7%		60.9%
Autocrime per (1,000 population)	45	1.8	64	2.5		-29.7%
Total Detections (% rate)	14	31.1%	28	43.8%		31.1%
Ystradgynlais		April-September YTD		Last Year		Indicator
CRIME		Performance	Indicator	Performance	Indicator	Change & Detection
Total Crime Recorded (per 1,000 population)	307	25.9	349	29.4		-12.0%
Total Detections (% rate)	137	44.6%	159	45.6%		44.6%
Burglary Dwelling (per 1,000 households)	4	0.8	4	0.8		0.0%
Total Detections (% rate)	0	0.0%	4	100.0%		0.0%
Total Violent Crime (per 1,000 population)	97	8.2	97	8.2		0.0%
Total Detections (% rate)	57	58.8%	58	59.8%		58.8%
Autocrime per (1,000 population)	27	2.3	40	3.4		-32.5%
Total Detections (% rate)	4	14.8%	8	20.0%		14.8%

Domestic Incidents

DYFED POWYS POLICE

SPI 9A TARGET - 80% OF INCIDENTS (WITH A POWER OF ARREST) LEADING TO ARREST
LOCAL TARGET - 30% OF TOTAL INCIDENTS INVOLVING REPEAT VICTIMS

Please note figures provided here are provisional only. For the latest detailed information please contact your local Public Protection Unit (PPU) for further details.



Section & Divisional Summary – September 2005 YTD

Section	Incidents		Arrests		Sanction Detections			Repeat Victims	Apr-Sept 2004 (SPLY)	
	Total Incidents	Power Of Arrest	Arrests where POA	% POA	Crimes	Sanction Detections	% Sanction Detection	% Repeats (12mnts data)	Total Incidents	Annual % Change
Ammanford (AA)	91	33	23	69.7%	31	15	48.4%	16.3%	146	-37.7%
Carmarthen (AC)	160	69	53	76.8%	70	32	45.7%	20.8%	150	6.7%
Llanelli (AL)	418	170	122	71.8%	200	68	34.0%	24.7%	392	6.6%
Towy Gwendraeth (AT)	116	45	29	64.4%	42	25	59.5%	22.4%	132	-12.1%
Carmarthenshire	785	317	227	71.6%	343	140	40.8%	22.5%	820	-4.3%
Aberystwyth (BA)	109	58	50	86.2%	47	25	53.2%	14.1%	93	17.2%
Aberaeron (BB)	17	10	7	70.0%	10	6	60.0%	21.9%	29	-41.4%
Cardigan (BC)	42	20	13	65.0%	26	8	30.8%	12.2%	51	-17.6%
Lampeter (BL)	20	8	6	75.0%	10	2	20.0%	12.9%	16	25.0%
Ceredigion	188	96	76	79.2%	93	41	44.1%	14.2%	189	-0.5%
Fishguard (CF)	87	32	26	81.3%	36	15	41.7%	28.7%	72	20.8%
Haverfordwest (CH)	157	61	47	77.0%	66	13	19.7%	34.1%	139	12.9%
Milford Haven (CM)	167	64	49	76.6%	57	27	47.4%	33.6%	126	32.5%
Pembroke Dock (CP)	161	75	59	78.7%	58	22	37.9%	31.8%	159	1.3%
Tenby (CT)	92	38	32	84.2%	34	17	50.0%	26.6%	70	31.4%
Pembrokeshire	664	270	213	78.9%	251	94	37.5%	31.6%	566	17.3%
Brecon (DB)	87	40	40	100.0%	42	15	35.7%	17.9%	107	-18.7%
Llandrindod Wells (DL)	75	28	24	85.7%	36	13	36.1%	21.8%	73	2.7%
Newtown (DN)	127	58	54	93.1%	65	22	33.8%	22.6%	109	16.5%
Welshpool (DW)	65	23	23	100.0%	33	13	39.4%	27.4%	84	-22.6%
Ystradgynlais (DY)	48	21	20	95.2%	24	14	58.3%	31.4%	48	0.0%
Powys	402	170	161	94.7%	200	77	38.5%	23.3%	421	-4.5%
Force	2039	853	677	79.4%	887	352	39.7%	24.8%	1996	2.2%

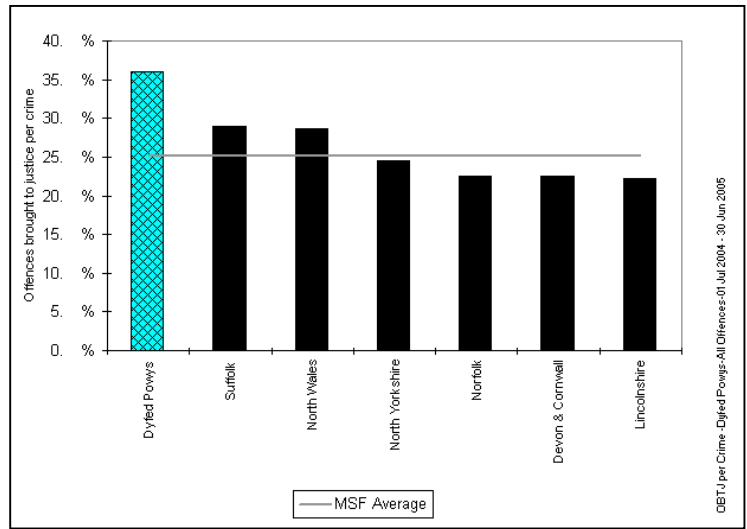
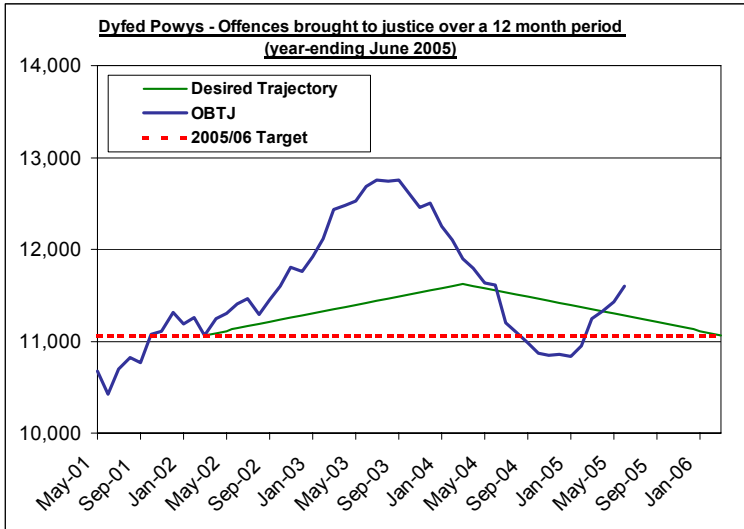
Source: LCS Recorded Domestic Incident Details (extracted 07/10/05 & 10/10/04 - SPLY)

NB – Repeat Victims performance is based on 12-months incident data and not only year-to-date performance.

Narrowing the Justice Gap - OFFENCES BROUGHT TO JUSTICE & SANCTION DETECTIONS

TARGET 2005/06 : 11,068 total OBTJ (Offences Brought to Justice)

Total Offences Brought to Justice (OBTJ) – Force & MSF Comparisons



Offences brought to justice – 12 monthly data	TIC	PND	Formal Warnings	Cautions	Convictions	OBTJ
Baseline: Apr 01 – Mar 02	420	-	-	3,698	6,900	11,068
Latest: July 04 – June 05	523	523	957	3,660	5,936	11,599
Change	+25%	-	-	-1%	-14%	+5%
2005/06 Force Target (0%- 11,068 OBTJ)	YES	n/a	YES	NO	NO	YES

Divisional Contribution Toward OBTJ Volumes – Approximate Latest

Please note this data is provided as a guide only - it is provided here for information.

Approx OBTJ	YTD Jun-05	Target**	Diff from Target
Carmarthenshire	1180	994	18.8%
Ceredigion	464	434	7.0%
Pembrokeshire	817	735	11.2%
Powys	681	604	12.7%
Force	3143	2767	13.6%

** - This is the target profile required to attain the end of year target of 11,068 OBTJ. (The divisional target breakdown is based on mirroring 2004/05 contribution toward total force sanction detections).

Sanction Detection Volume Performance YTD – Current Clear-Up Breakdown (Annual % Change)

The current volume of sanction detections (September 05 YTD) is up 19% on the same period last year to stand at 5,965 (up 933 from 5,032*).

Area – September YTD	Charged	Summons	Cautioned	TIC	PND	F. Warning for Cannabis*	Total Sanction Dets
Carmarthenshire	1006 (0%)	29 (-26%)	625 (+24%)	83 (-21%)	140 (22 SPLY)	219 (+37%)	2101 (+14%)
Ceredigion	418 (+3%)	34 (+26%)	311 (+8%)	17 (-39%)	19 (4 SPLY)	70 (+8%)	869 (+6%)
Pembrokeshire	634 (+1%)	26 (-37%)	550 (+6%)	108 (20 SPLY)	84 (21 SPLY)	89 (-6%)	1491 (+13%)
Powys	689 (+21%)	64 (+94%)	489 (+26%)	72 (5 SPLY)	125 (15 SPLY)	64 (+60%)	1503 (+43%)
Force	2747 (+5%)	153 (+9%)	1975 (+16%)	280 (+77%)	368 (62 SPLY)	442 (+23%)	5965 (+19%)

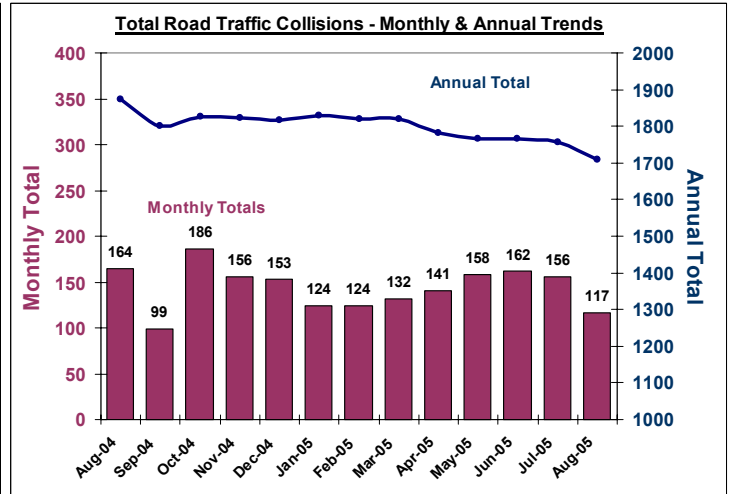
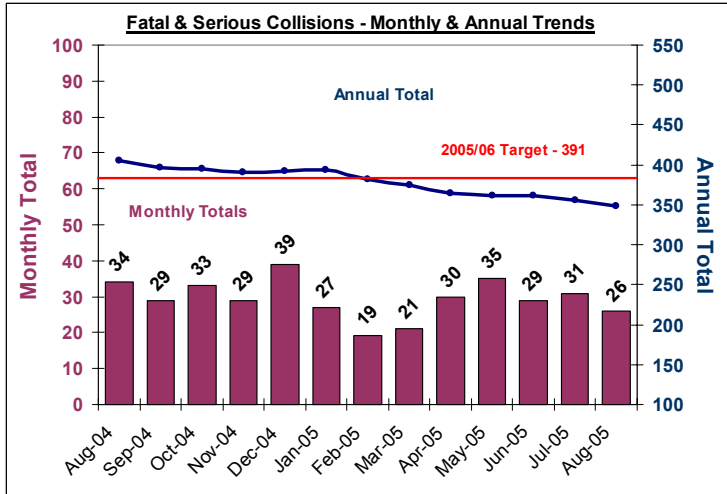
* - SPLY Data Approximate

Road Traffic Collisions

August Monthly Data Latest available

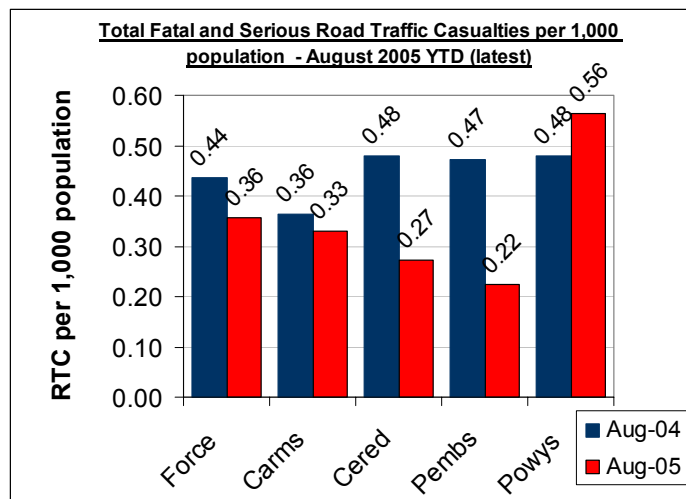
TARGET 2005/06 : 391 FATAL AND SERIOUS COLLISIONS (0.8 PER 1,000 POPULATION)

Road Traffic Collisions – Monthly & Annual Trends (August 05 - latest data)



Performance YTD (August 2005 YTD - latest)	FORCE	Carms	Cered	Pembs	Powys
Fatal Road Collisions YTD	18	9	1	2	6
Serious & Fatal Road Collisions YTD	151	47	20	22	62
Indicator - Per 1,000 population	0.30	0.27	0.26	0.19	0.47
On-Target (0.8 end of year – 0.33 pro-rata)	YES	YES	YES	YES	NO
Fatal (SPLY)	22	8	3	3	8
Serious & Fatal (SPLY)	181	55	32	42	52

Road Traffic Casualties – 2010 Target Progress



August 2005 YTD (latest)	Force	Carms	Cered	Pembs	Powys
Number of people killed or seriously injured casualties	178	58	21	26	73
At 2010 Target Level*	YES	YES	YES	YES	YES
Number of Children (<=15 yrs) killed or seriously injured	17	5	4	3	5
At 2010 Target Level*	YES	YES	YES	YES	YES
Number of persons with slight injuries	909	333	142	198	236
At 2010 Target Level*	NO	NO	NO	NO	NO

* 2010 Targets Established with Roads Policing Strategy, Operations Dept & National Road Policing Targets. Progress towards Pro-Rata year-end 2010 target illustrated here

Source: MAAP RTC Database 10/10/05

PPAF Statutory Performance Indicator Summary

Reported Quarterly

* - HOME OFFICE POLICE PERFORMANCE ASSESSMENT FRAMEWORK MEASURES

This Data is Updated Quarterly – Latest: Data

Activity	SPI Number	Indicator Description	Apr-Aug 2004 Performance	Apr-Aug 2005 Performance	Change	2005/06 End of Year Target
User Satisfaction Measures	1a*	Satisfaction of victims of domestic burglary, violent crime, vehicle crime and road traffic collisions with respect to - a) making contact with the Police	91.30%	92.3%	1.0%	NEW
	1b*	b) action taken by the Police	85.40%	87.5%	2.1%	NEW
	1c*	c) Being kept informed of progress	67.80%	74.4%	6.6%	NEW
	1d*	d) Their treatment by staff	92.10%	92.5%	0.4%	NEW
	1e*	e) the overall service provided	85.20%	85.8%	0.6%	NEW
Confidence	2a	Using the BCS, the % of people who think their local police do a good job	NEW	NEW	-	NEW
Fairness and Equality Measures	3a*	Satisfaction of victims of racist incidents with respect to the overall service provided	89%	66.7%	-22.2%	NEW
	3b*	From SPI 1(e), comparison of satisfaction for white users and users from visible minority ethnic groups with respect to the overall service provided.	NEW	NEW	NEW	NEW
	3c(i)	(i) % of PACE stop/searches which lead to arrest by ethnicity	N/A	N/A	N/A	N/A
	3c(ii)	(ii) % of other (non-PAEC) stop/searches which lead to arrest by ethnicity	N/A	N/A	N/A	N/A
	3d*	Comparison of percentage detected of violence against the person offences by ethnicity of the victim (sanction detections)	White - 31.8% Ethnic - 40.0%	White - 34.8% Ethnic - 24.2%	White +3% Ethnic -16%	White - 31% Ethnic - 31%
	3e	Proportion of police recruits (ethnic) compared to the proportion of people from minority ethnic groups in the economically active population.	(No ethnic recruits)	(No ethnic recruits)	-	NEW
	3f*	Ratio of officers from minority ethnic groups resigning to all officer resignations	00:02	00:02	NEW	NEW
	3g*	% of female police officers compared to overall Force strength.	18.4%	20.1%	1.7%	19%
Measures of Crime Levels	4a^	Using the British Crime Survey (a) the risk of personal crime; and	4%	8%	4.0%	8%
	4b^	(b) the risk of household crime.	12%	11%	-1.0%	11%
	5a	(a) Domestic Burglaries per 1,000 households.	2.35 (486 crimes)	1.67 (347 crimes)	-0.68 (-139 crimes)	5.06 (1042 crimes)
	5b	(b) Violent crime per 1,000 population.	8.22 (4101 crimes)	7.68 (3829 crimes)	-0.54 (272 crimes)	17.60 (8593 crimes)
	5c	(c) Robberies per 1,000 population.	0.03 (17 crimes)	0.04 (19 crimes)	+0.01 (+2 crimes)	0.1 (48 crimes)
	5d	(d) Vehicle crime per 1,000 population.	2.17 (1080 crimes)	1.71 (852 crimes)	-0.46 (228 crimes)	4.77 (2331 crimes)
	5e	(e) Life threatening crime and gun crime per 1,000 population.	0.07 (37 crimes)	0.11 (56 crimes)	+0.04 (+19 crimes)	0.28
Offences Brought to Justice Measures (OBTJ)	6a**	Number of notifiable/recorded offences resulting in convictions, caution or taken into consideration at court	1,826	2,006	+180 OBTJ (+9.9%)	11,068
	6b**	% of notifiable/recorded offences resulting in convictions, caution or taken into consideration at court	30.5%	34.9%	4.4%	NEW
Detection Measure	7a	% of notifiable/recorded offences resulting in charge, summons, caution or taken into consideration at court ('sanction detections')	29.0%	35.3%	6.3%	31%
Domestic Violence Measures	8a	Percentage of domestic violence incidents with a power of arrest where an arrest was made relating to the incident.	80.2% (498 arrests)	80.0% (597 arrests)	+99 arrests	80%
Traffic Measures	9a(i)**	(i) Number of people killed in under 30 days or seriously injured in road traffic collisions	146 fatal or serious collisions	122 fatal or serious collisions	-24 collisions	391 fatal or serious collisions
	9a(ii)**	(ii) Number of persons killed or seriously injured in road traffic collisions per 100million vehicle kilometres travelled.	2.97	2.48	-0.49	8.13
Quality of Life Measures	10a^	Using the British Crime Survey a) fear of crime	11%	9%	-2%	10%
	10b^	Perceptions of anti-social behaviour; and	NEW	NEW	NEW	NEW
	10c^	Perceptions of local drug use / drug dealing	NEW	NEW	NEW	NEW
Resource Use Measures	11a^	Percentage of police officer time spent on frontline duties	65.4%	-	-	68.5%
	12a	Delivery of cashable and non-cashable efficiency targets	NEW	NEW	NEW	NEW
	13a*	Average number of working hours lost due to sickness per police officer.	23.7 hours	16.8 hours	-29%	92.8 hours
	13b*	Average number of working hours lost due to sickness by police staff.	22.7 hours	19.5 hours	-14%	80.7 hours

* April-June Data : Latest Available

** - April-July Data : Latest Available

*** - April & May Data only Latest Available

^ - End of Year Data 2004/05 : Latest Available