



Heddlu Dyfed-Powys Police

CRIME TRENDS UPDATE January 2006

Contents:

Headline Statistics	2
Most Frequent Recorded Offences Profile	3
Recorded Crimes and Detection Rates	4
Domestic Burglaries and Detection Rates	5
Other Burglary and Detection Rates	6
Violent Crime and Detection Rates	7
Vehicle Crime and Detection Rates	8
Criminal Damage and Detection Rates	9
Drugs Statistics and Detection Rates	10
Section Level Sanction Detection Summary	11
Divisional Contribution to Targets	12
Domestic Incidents	16
User Satisfaction	17
Narrowing the Justice Gap	18
Road Traffic Collisions	19
PPAF Statutory Performance Indicator Summary	20

Heddlu Dyfed Powys Police: Corporate Services



Recorded Crime:

- Total Recorded Crime is down by 6% (-1,743 crimes) compared to the same period last year (SPLY) to stand at 25,843 crimes. The monthly figure for January 2006 stands at 2,204 a fall of 3% (-76 offences) on the same month in 2005, and 3% (-68 offences) down on the preceding month December 2005.
- Recorded detection performance has a total detection rate for the force at 45% (11,515 total detections) compared with 40% the previous year. The volume of total detections has increased by 4% (+409 detections). The sanction detection rate stands at 39% - this is consistent with the target rate of 31% (and compared with 31% recorded last year). The volume of sanction detections has increased by 1,563 or 19%.

Domestic Burglary:

- Total Domestic Burglary offences are down by 27% (-253 crimes) compared to the same period last year (SPLY) to stand at 673 crimes. The monthly figure for January 2006 stands at 53 a fall of 39% (-34 offences) on the same month in 2005, but a 13% (+6 offences) increase on the preceding month December 2005.
- Recorded detection performance remains higher than last year, with the total detection rate for the force at 24% (163 detections) compared with 23% the previous year. The volume of total detections has decreased by 22% (-46) as a consequence of this substantial fall in offences. The sanction detection rate stands at 23% (up from 19% last year) with the volume of sanction detections falling by 10% (-17).

Violent Crimes:

- Total Violent crime remains down by 7% (-528 crimes) compared to the same period last year (SPLY) to stand at 7,068 crimes. The monthly figure for January 2006 stands at 579 a fall of 6% (-34 offences) on the same month in 2005, and a 9% (-55 offences) decrease on the preceding month December 2005.
- Recorded detection performance stands at a total detection rate for the force of 65% (4,624 detections) up from 60% last year. The volume of total detections has increased by 2% (+102) over this period. Furthermore the sanction detection rate stands at 53% (compared with 38% last year) with the volume recorded up by 29% (+843 sanction detections).

Vehicle Crime:

- Total Vehicle crime is down by 21% (-422 crimes) compared to the same period last year (SPLY) to stand at 1,595 crimes. The monthly figure for January 2006 stands at 131 a fall of 16% (-25 offences) on the same month in 2005, and an 8% decrease (-12 offences) on the preceding month December 2005.
- Recorded total detection stands at 18% (284 detections) down from 20% the previous year. The volume of total detections has decreased by 30% (-124) as a consequence this fall in recorded offences. The sanction detection rate stands at 17% (compared with 18% last year) with the volume down considerably (-98 sanction detections or 27%).

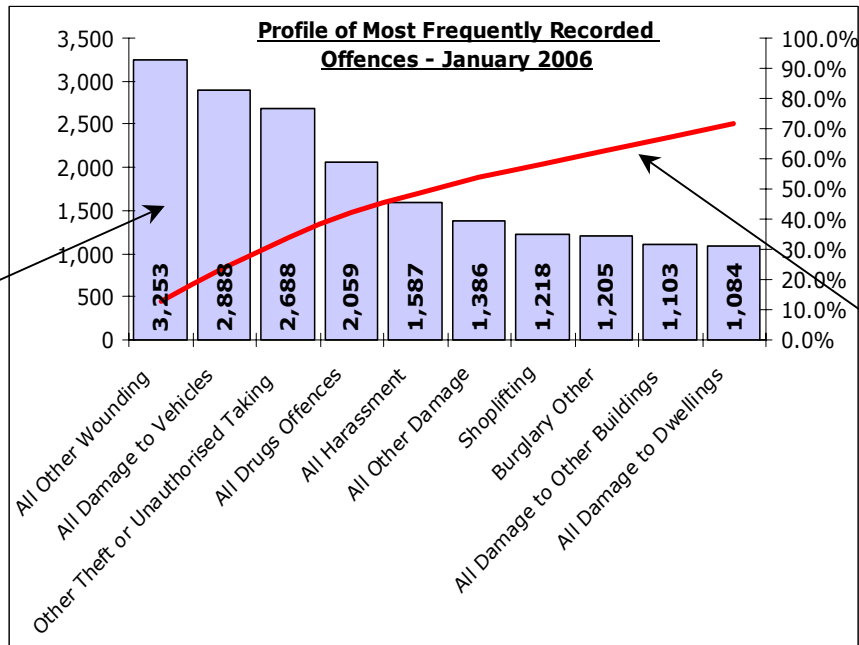
Criminal Damage:

- Total Criminal Damage has fallen by 3% (-179 crimes) compared to the same period last year (SPLY) to stand at 6,461 (excl Arson & Threat to Commit CD). The monthly figure for January 2006 stands at 544 a rise of 3% (+14 offences) on the same month in 2005, but a decrease of 15% (-96) on the previous month December 2005.
- Recorded detection performance stands at a total detection rate for the force of 27% (1,720 detections) up from 24% last year. The volume of total detections has increased by 6% (+104) over this period. The sanction detection rate stands at 22% (compared with 16% last year) with the volume up a notable 30% over this period (+324 sanction detections).

Most Frequent Recorded Offences Profile

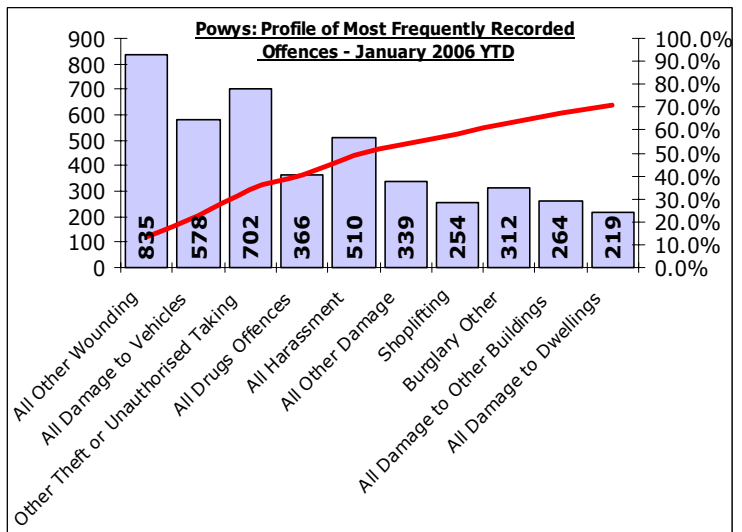
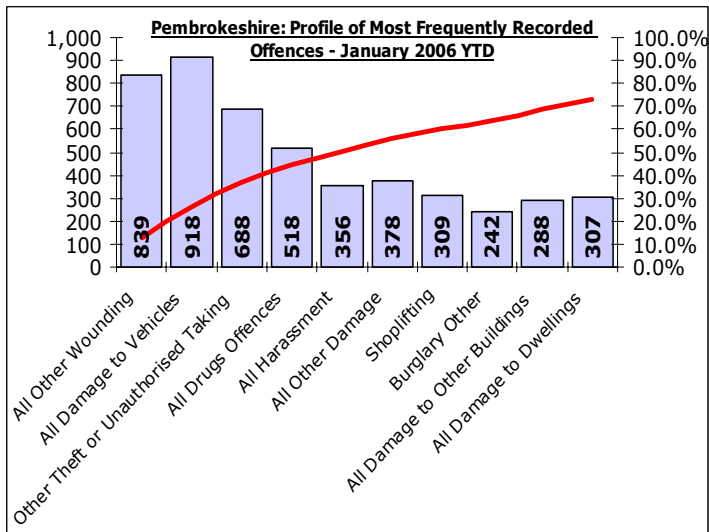
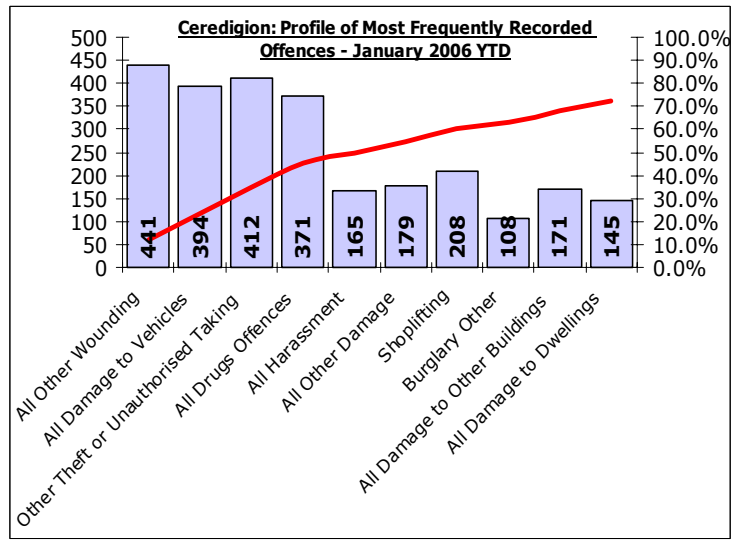
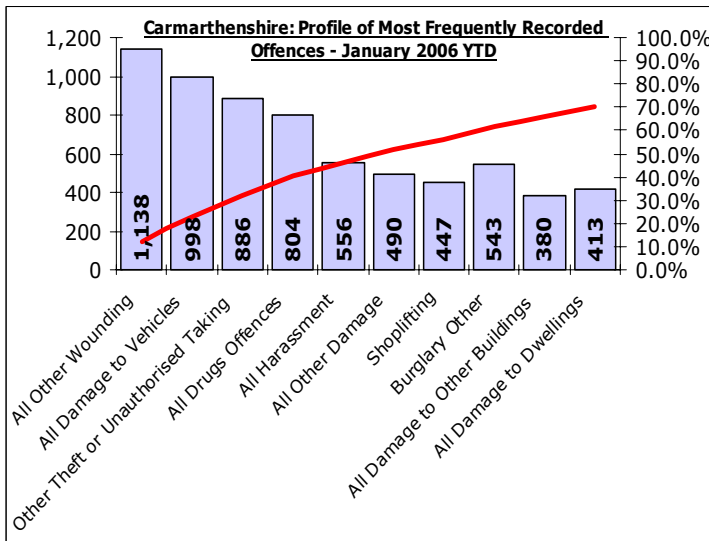
DYFED-POWYS POLICE

January 2006 YTD (Note : Divisional profiles are in the same sequence as forces' most frequent categories – for comparison)



Recorded offences in each category in order of volume.
(Note these can include a number of sub-categories)

The cumulative contribution of these offence categories toward the total volume of offences recorded.

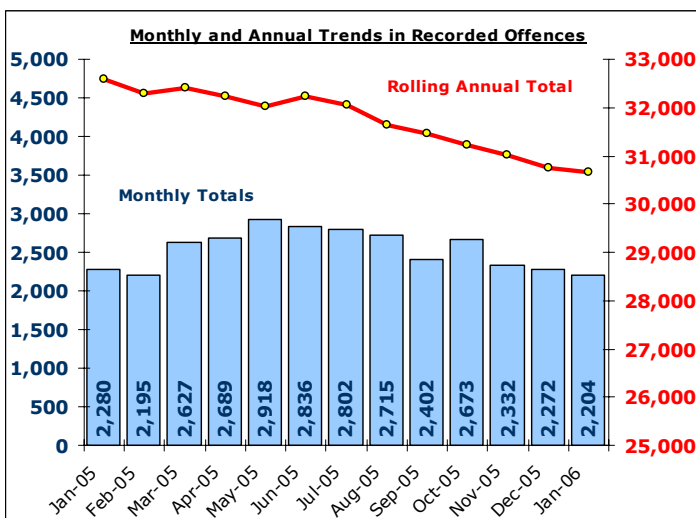


Total Recorded Crime

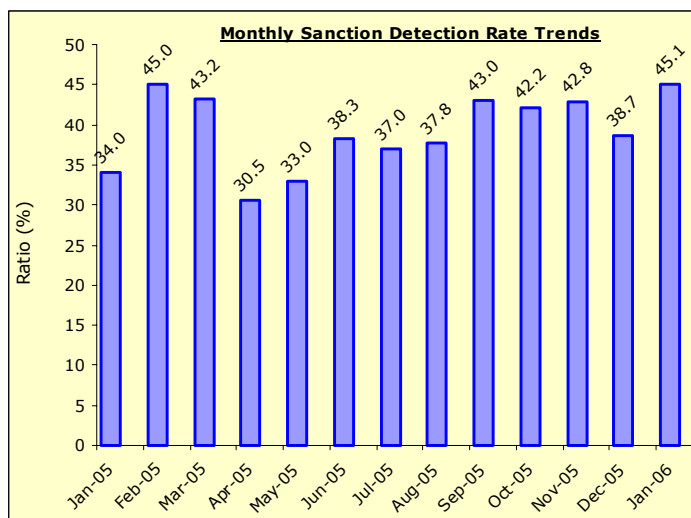
DYFED-POWYS POLICE

TARGET 2005/06 : NO TARGET

Recorded Crime Levels – January 2006

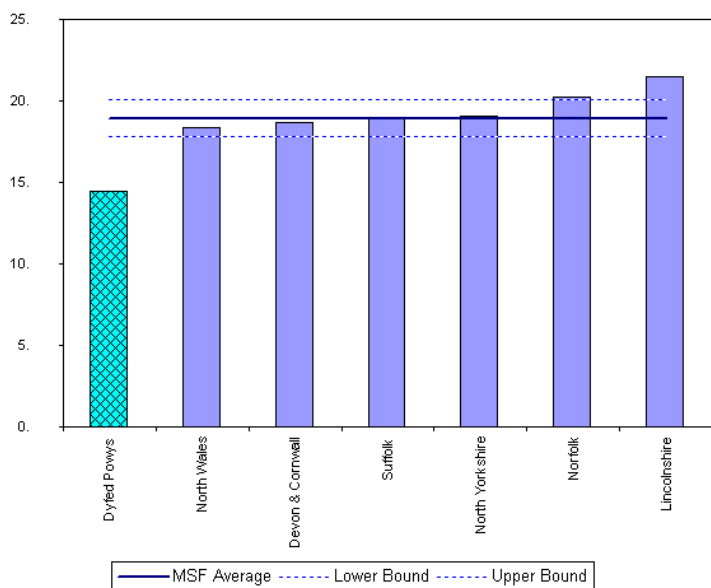


Monthly Sanction Detection Rates – January 2006



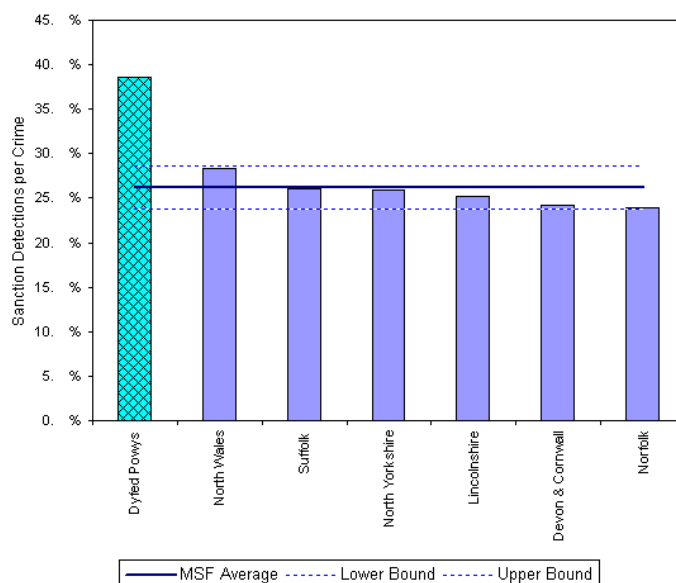
Total Recorded Crimes: January 2006 YTD	January 2006 YTD			Detection Rates YTD		Annual Trends - SPLY		
	Crimes	Sanction Dets	Total Dets	Sanction %	Total %	Crimes SPLY	Change	% Change
FORCE	25,843	9,965	11,515	38.6%	44.6%	27,586	- 1,743	- 6.3%
CARMS	9,474	3,548	4,016	37.4%	42.4%	10,655	- 1,181	- 11.1%
CERED	3,591	1,476	1,724	41.1%	48.0%	3,802	- 211	- 5.5%
PEMBS	6,622	2,512	2,973	37.9%	44.9%	7,112	- 490	- 6.9%
POWYS	6,156	2,429	2,802	39.5%	45.5%	6,017	+ 139	+ 2.3%

MSF – Crimes per 1000 Residents 01 October 2005 – 31 December 2005 (latest quarter)



Crimes per 1000 Residents - All Crime - 01 Oct 2005 - 31 Dec 2005

MSF – Sanction detections (annual): 01 January 2005 – 31 December 2005



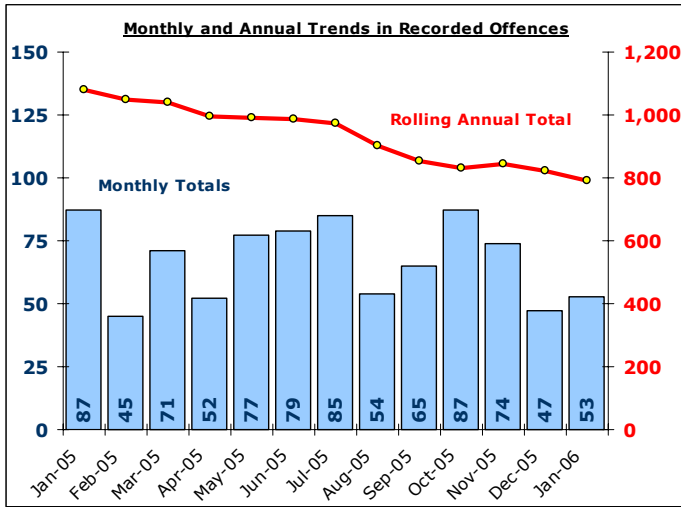
Barbark MSF - Sanction Detections per Crime - Dyfed Powys - All Crime - 01 Jan 2005 - 31 Dec 2005

Domestic Burglary

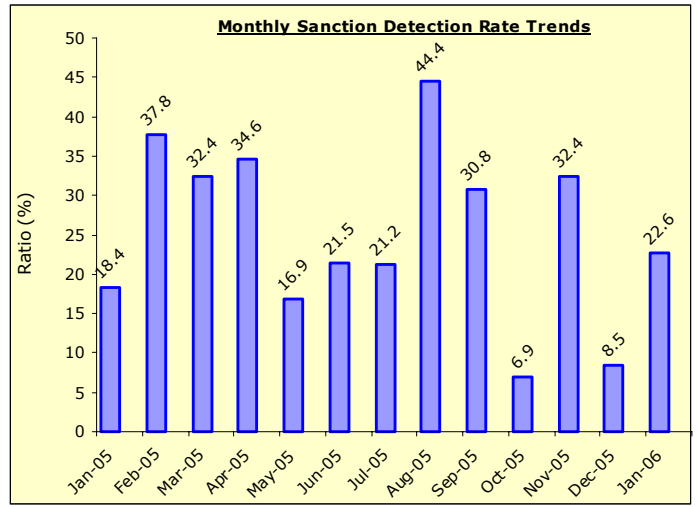
DYFED-POWYS POLICE

TARGET 2005/06 : 0% Increase in offences & 28% total detection rate

Recorded Crime Levels – January 2006

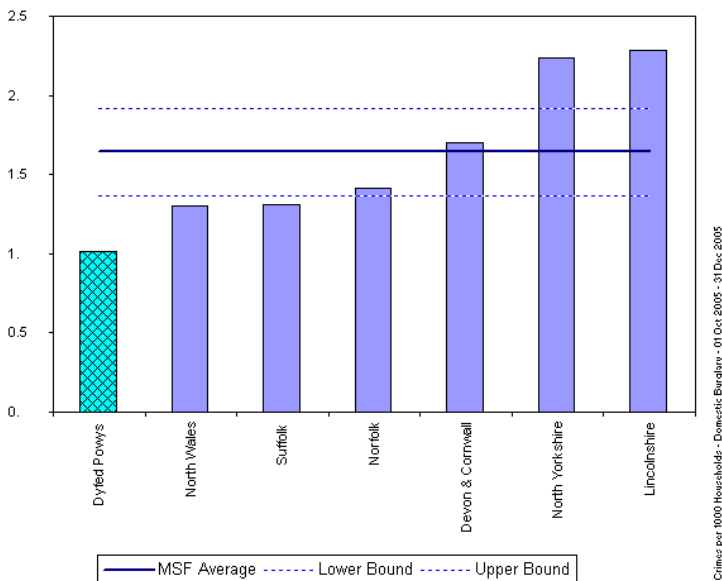


Monthly Sanction Detection Rates – January 2006



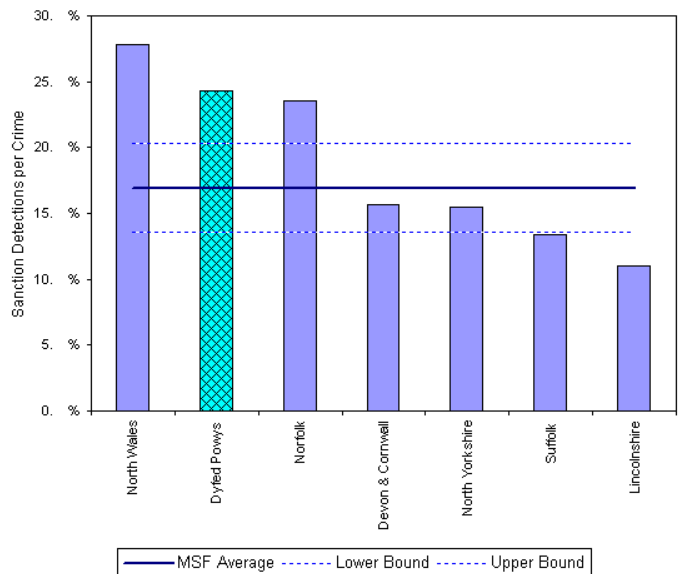
Total Domestic Burglary: January 2006 YTD	January 2006 YTD			Detection Rates YTD		Annual Trends - SPLY		
	Crimes	Sanction Dets	Total Dets	Sanction %	Total %	Crimes SPLY	Change	% Change
FORCE	673	156	163	23.2%	24.2%	926	- 253	- 27.3%
CARMS	294	73	73	24.8%	24.8%	400	- 106	- 26.5%
CERED	78	17	17	21.8%	21.8%	106	- 28	- 26.4%
PEMBS	151	35	41	23.2%	27.2%	222	- 71	- 32.0%
POWYS	150	31	32	20.7%	21.3%	198	- 48	- 24.2%

MSF – Crimes per 1000 Residents 01 October 2005 – 31 December 2005 (latest quarter)



Crimes per 1000 Households - Domestic Burglary - 01 Oct 2005 - 31 Dec 2005

MSF – Sanction detections (annual): 01 January 2005 – 31 December 2005



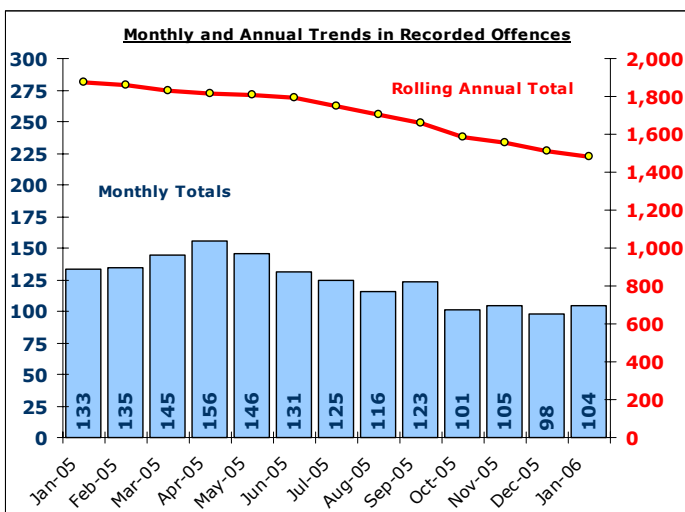
BarChart MSF - Sanction Detections per Crime - Dyfed Powys - Domestic Burglary 01 Jan 2005 - 31 Dec 2005

Other Burglary

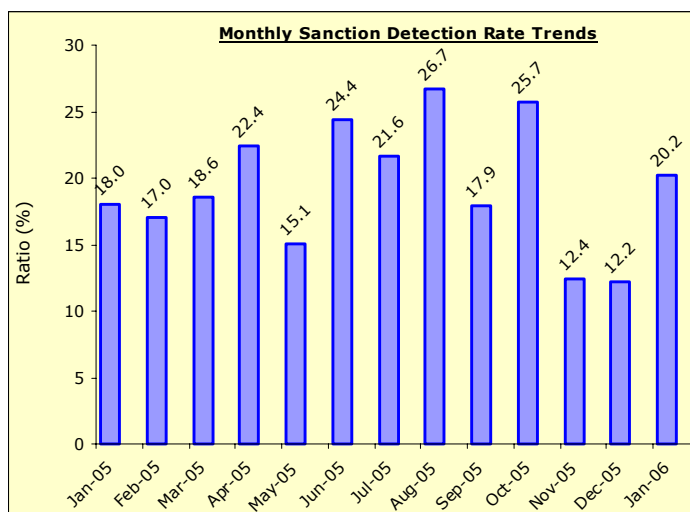
DYFED-POWYS POLICE

TARGET 2005/06 : No Target

Recorded Crime Levels – January 2006

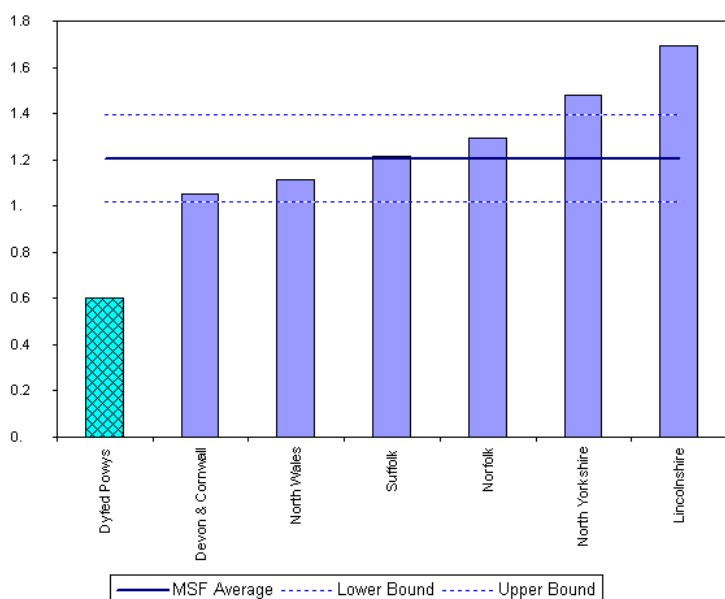


Monthly Sanction Detection Rates – January 2006

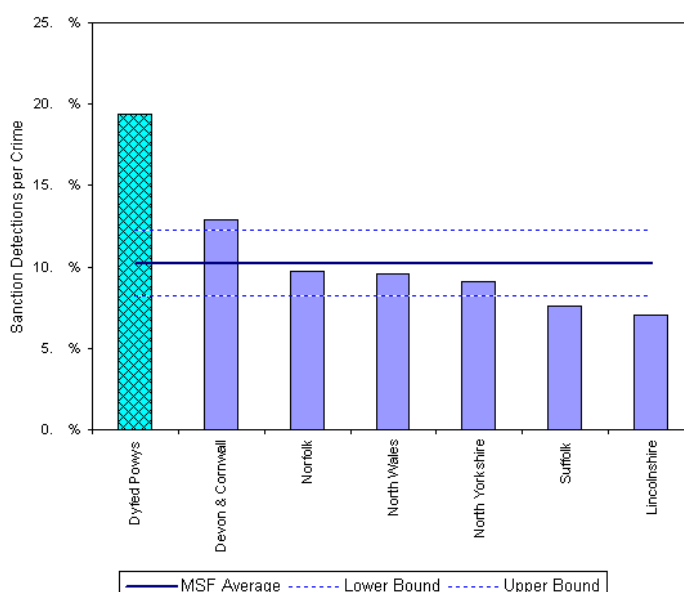


Total Other Burglary Crimes: January 2006 YTD	January 2006 YTD			Detection Rates YTD		Annual Trends - SPL Y		
	Crimes	Sanction Dets	Total Dets	Sanction %	Total %	Crimes SPL Y	Change	% Change
FORCE	1,205	241	256	20.0%	21.2%	1,553	- 348	- 22.4%
CARMS	543	108	110	19.9%	20.3%	738	- 195	- 26.4%
CERED	108	17	23	15.7%	21.3%	168	- 60	- 35.7%
PEMBS	242	50	53	20.7%	21.9%	284	- 42	- 14.8%
POWYS	312	66	70	21.2%	22.4%	363	- 51	- 14.0%

MSF – Crimes per 1000 Residents 01 October 2005 – 31 December 2005 (latest quarter)



MSF – Sanction detections (annual): 01 January 2005 – 31 December 2005



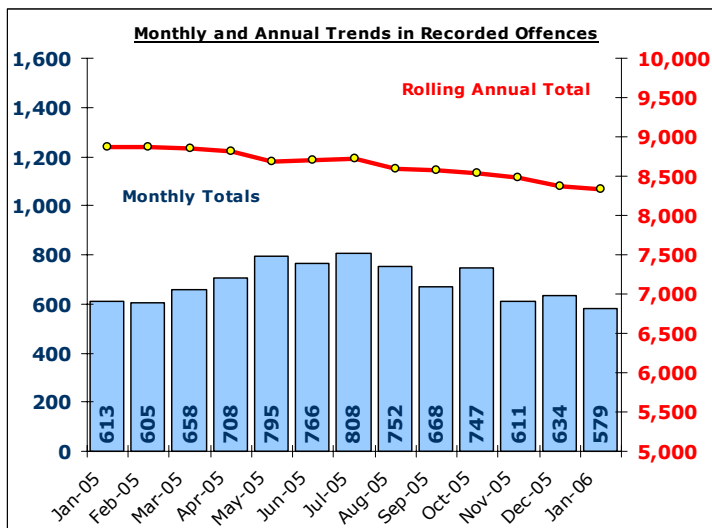
Bar chart MSF - Sanction Detections per Crime-Dyfed Powys-Non Domestic Burglary-01-Jan-2005 - 31-Dec-2005

Total Violent Crime

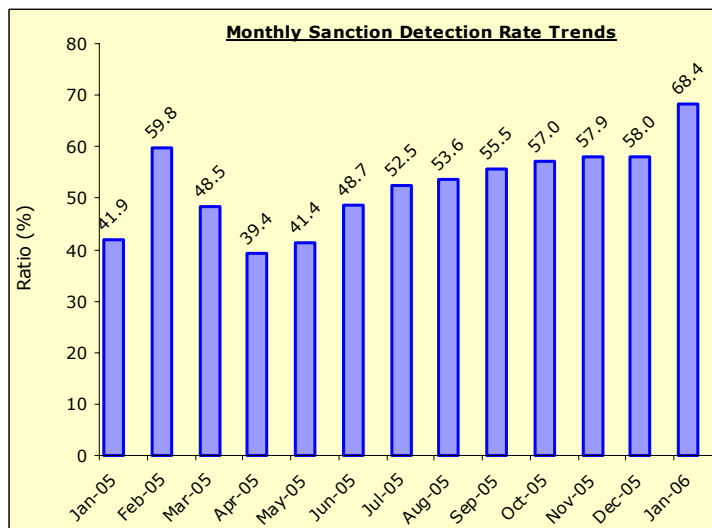
DYFED-POWYS POLICE

TARGET 2005/06 – 3% Reduction in offences & 60% total detection rate

Recorded Crime Levels – January 2006

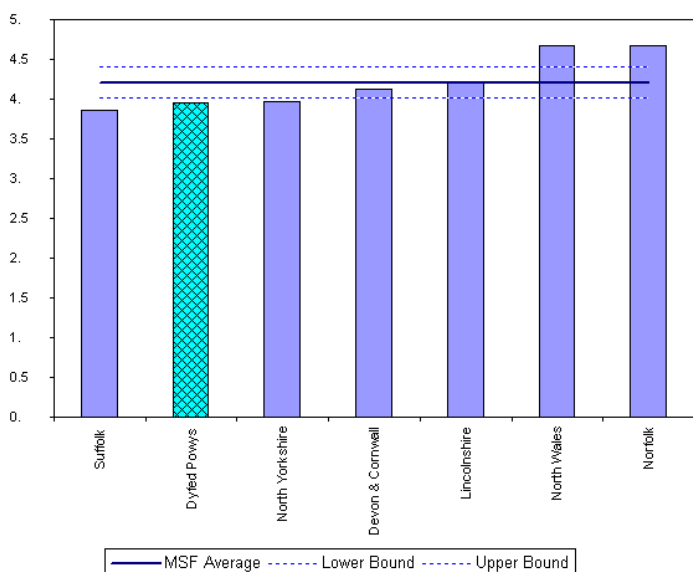


Monthly Sanction Detection Rates – January 2006



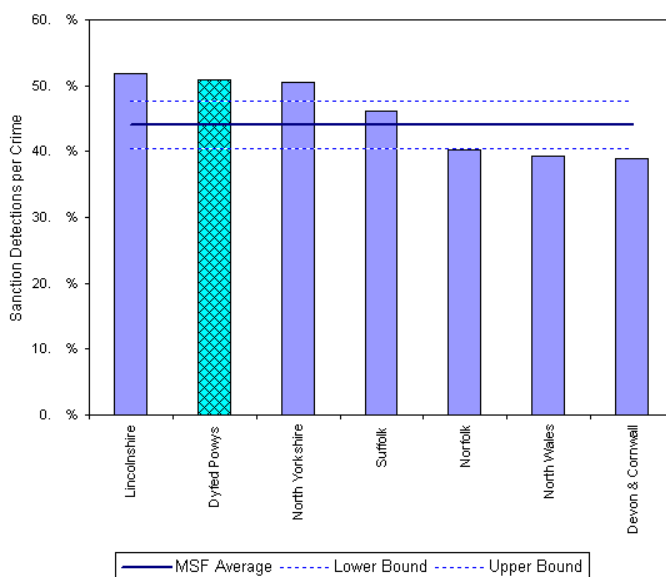
Total Violent Crimes: January 2006 YTD	January 2006 YTD			Detection Rates YTD		Annual Trends - SPL Y		
	Crimes	Sanction Dets	Total Dets	Sanction %	Total %	Crimes SPL Y	Change	% Change
FORCE	7,068	3,723	4,624	52.7%	65.4%	7,596	- 528	- 7.0%
CARMS	2,507	1,280	1,543	51.1%	61.5%	2,763	- 256	- 9.3%
CERED	902	476	623	52.8%	69.1%	1,164	- 262	- 22.5%
PEMBS	1,725	888	1,157	51.5%	67.1%	1,970	- 245	- 12.4%
POWYS	1,934	1,079	1,301	55.8%	67.3%	1,699	+ 235	+ 13.8%

MSF – Crimes per 1000 Residents 01 October 2005 – 31 December 2005 (latest quarter)



Crimes per 1000 Residents - Violent Crime - 01 Oct 2005 - 31 Dec 2005

MSF – Sanction detections (annual): 01 January 2005 – 31 December 2005



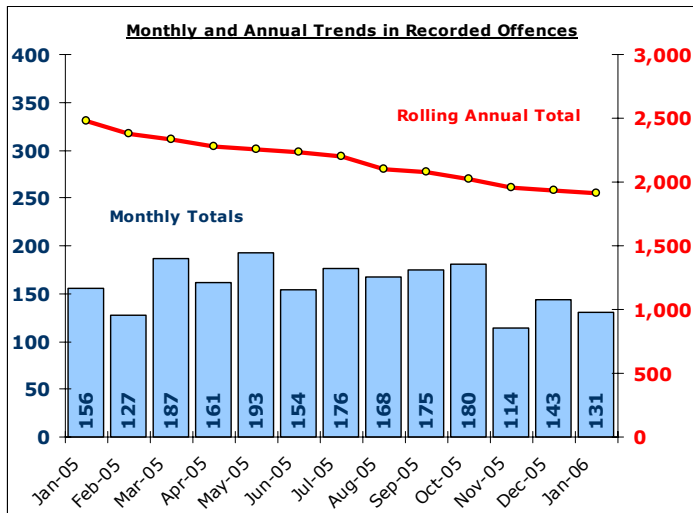
Bar chart MSF - Sanction Detections per Crime-Dyfed Powys-Violent Crime-01 Jan 2005 - 31 Dec 2005

Total Vehicle Crime

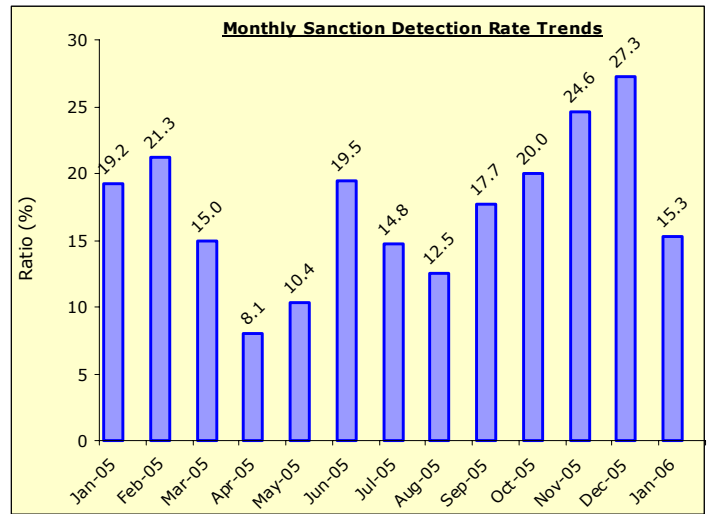
DYFED-POWYS POLICE

TARGET 2005/06 : 0% Increase in offences & 20% total detection rate

Recorded Crime Levels – January 2006

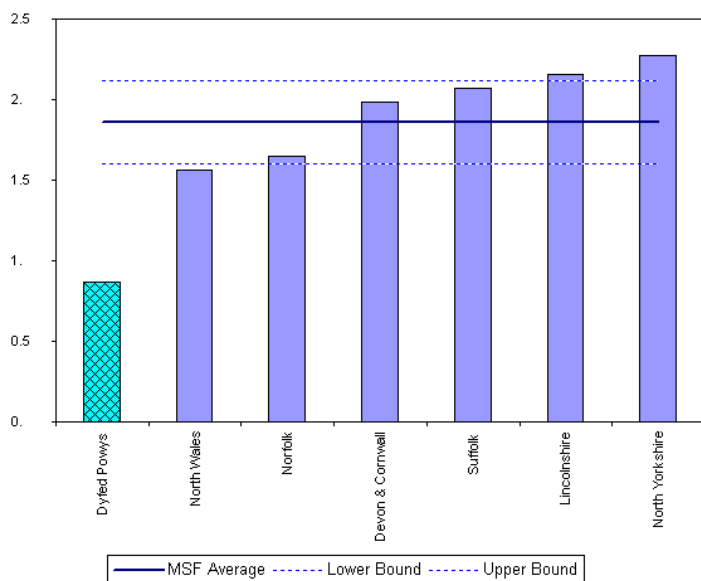


Monthly Sanction Detection Rates – January 2006

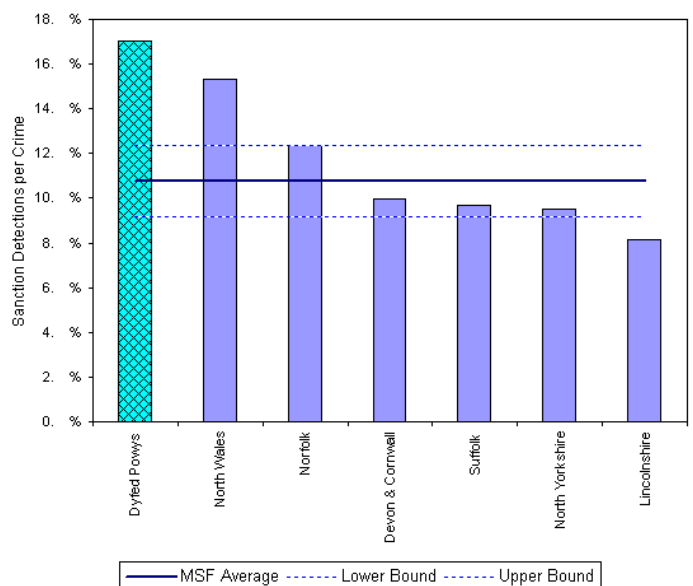


Total Vehicle Crimes: January 2006 YTD	January 2006 YTD			Detection Rates YTD		Annual Trends - SPLY		
	Crimes	Sanction Dets	Total Dets	Sanction %	Total %	Crimes SPLY	Change	% Change
FORCE	1,595	264	284	16.6%	17.8%	2,017	- 422	- 20.9%
CARMS	677	100	105	14.8%	15.5%	846	- 169	- 20.0%
CERED	178	30	34	16.9%	19.1%	184	- 6	- 3.3%
PEMBS	397	75	82	18.9%	20.7%	559	- 162	- 29.0%
POWYS	343	59	63	17.2%	18.4%	428	- 85	- 19.9%

MSF – Crimes per 1000 Residents 01 October 2005 – 31 December 2005 (latest quarter)



MSF – Sanction detections (annual): 01 January 2005 – 31 December 2005

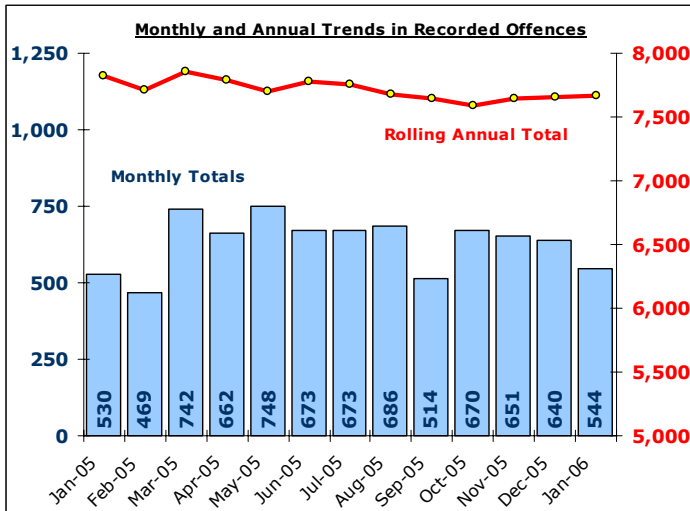


Total Criminal Damage

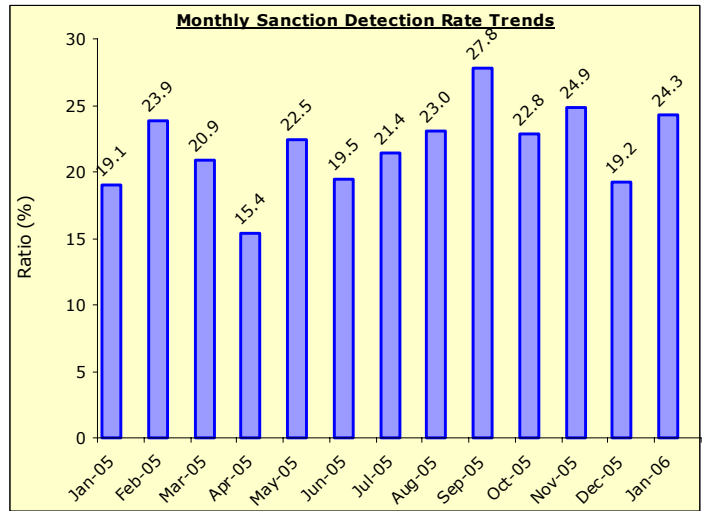
EXCLUDES ARSON % THREAT TO COMMIT CRIMINAL DAMAGE (HOC 56 & 59)

TARGET 2005/06 : NO TARGET

Recorded Crime Levels – January 2006

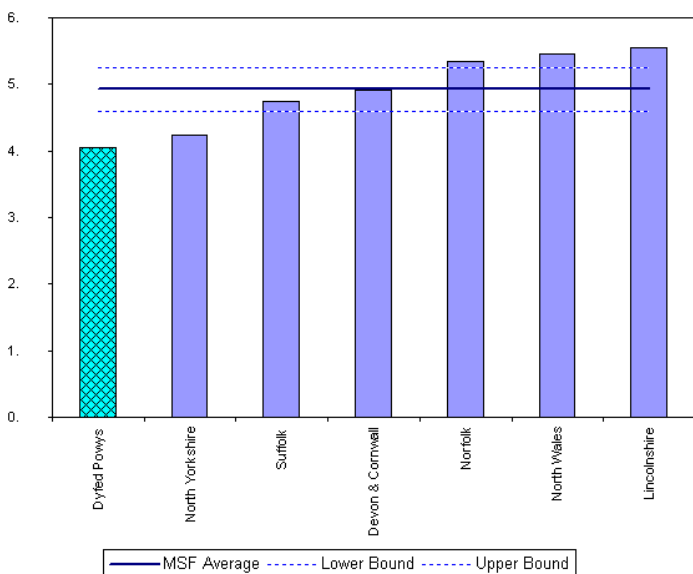


Monthly Sanction Detection Rates – January 2006



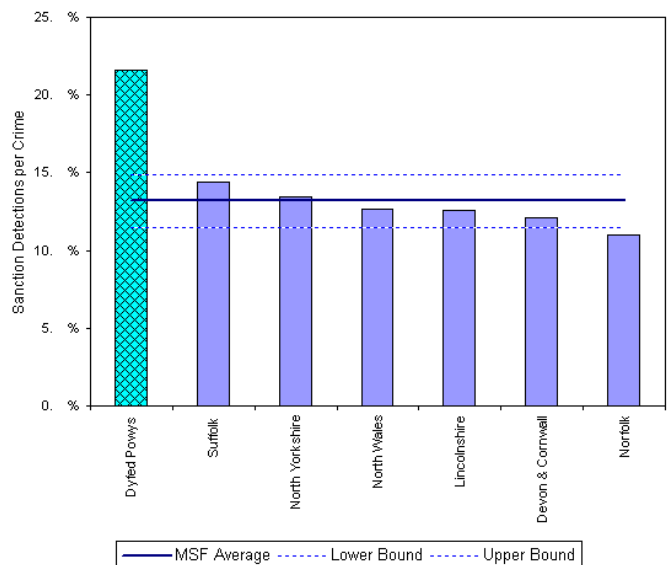
Total Criminal Damage: January 2006 YTD	January 2006 YTD			Detection Rates YTD		Annual Trends - SPLY		
	Crimes	Sanction Dets	Total Dets	Sanction %	Total %	Crimes SPLY	Change	% Change
FORCE	6,461	1,416	1,720	21.9%	26.6%	6,640	- 179	- 2.7%
CARMS	2,281	457	541	20.0%	23.7%	2,487	- 206	- 8.3%
CERED	889	202	239	22.7%	26.9%	806	+ 83	+ 10.3%
PEMBS	1,891	416	524	22.0%	27.7%	1,916	- 25	- 1.3%
POWYS	1,400	341	416	24.4%	29.7%	1,431	- 31	- 2.2%

MSF – Crimes per 1000 Residents 01 October 2005 – 31 December 2005 (latest quarter)



Crimes per 1000 Residents - Criminal Damage (exc 59) - 01 Dec 2005 - 31 Dec 2005

MSF – Sanction detections (annual): 01 January 2005 – 31 December 2005



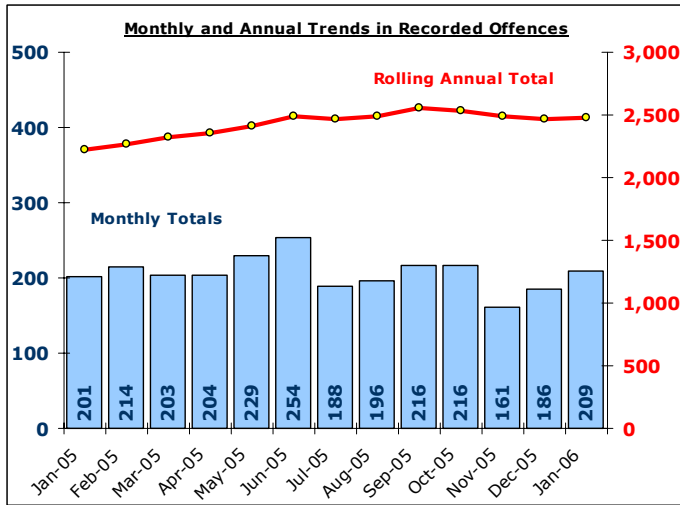
BarChart MSF - Sanction Detections per Crime-Dyfed Powys-Criminal Damage (exc 59)-01 Jan 2005 - 31 Dec 2005

Total Drug Offences

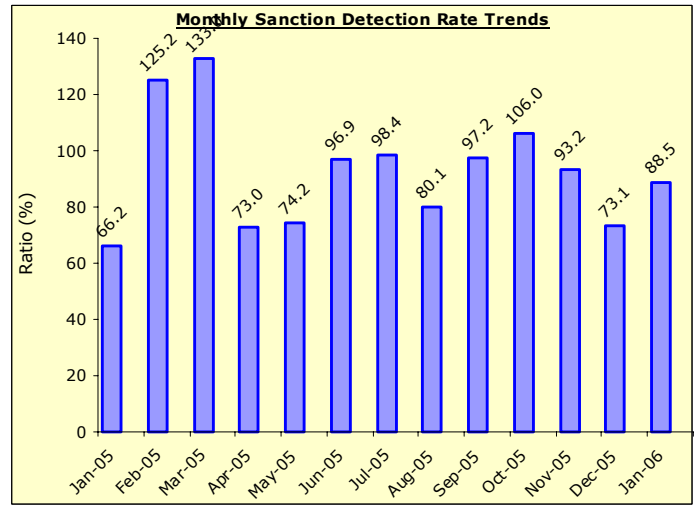
DYFED-POWYS POLICE

TARGET 2005/06 : NO TARGET

Recorded Crime Levels – January 2006

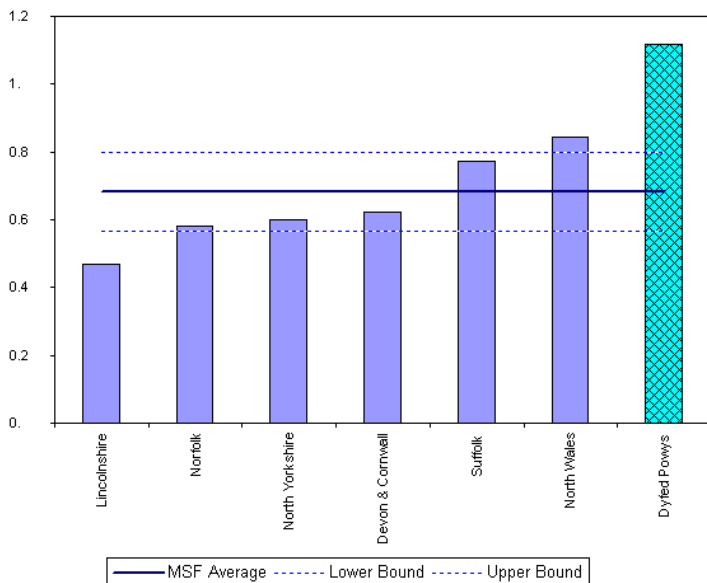


Monthly Sanction Detection Rates – January 2006

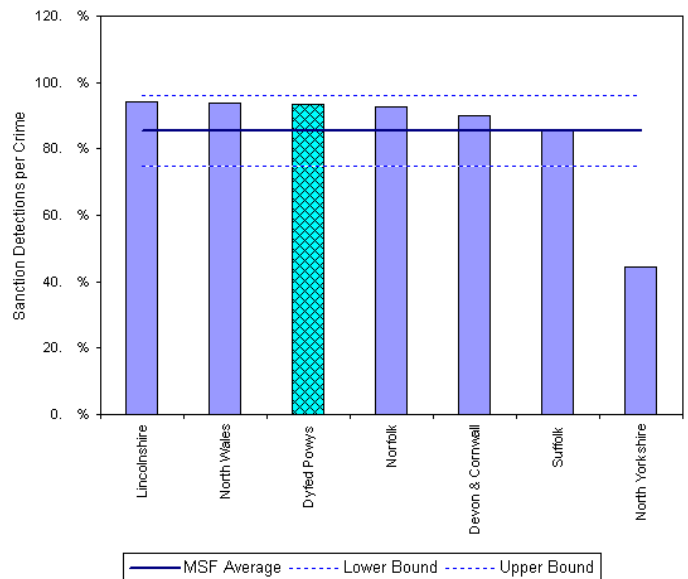


Total Drug Offences: January 2006 YTD	January 2006 YTD			Detection Rates YTD		Annual Trends - SPL Y		
	Crimes	Sanction Dets	Total Dets	Sanction %	Total %	Crimes SPL Y	Change	% Change
FORCE	2,059	1,817	1,948	88.2%	94.6%	1,910	+ 149	+ 7.8%
CARMS	804	703	778	87.4%	96.8%	779	+ 25	+ 3.2%
CERED	371	341	352	91.9%	94.9%	345	+ 26	+ 7.5%
PEMBS	518	459	481	88.6%	92.9%	497	+ 21	+ 4.2%
POWYS	366	314	337	85.8%	92.1%	289	+ 77	+ 26.6%

MSF – Crimes per 1000 Residents 01 October 2005 – 31 December 2005 (latest quarter)



MSF – Sanction detections (annual): 01 January 2005 – 31 December 2005



Crimes per 1000 Residents - Drug Offences - 01 Oct 2005 - 31 Dec 2005

Sanction Detections per Crime - Dyfed Powys - Drug Offences - 01 Jan 2005 - 31 Dec 2005

Section Level Sanction Detection Summary

DYFED-POWYS POLICE

TARGET 2005/06 : 31% SANCTION DETECTION RATE

Sanction Detections Performance January 2006 YTD: Total Recorded

Sanction Detection Rate	Recorded Crimes	Detected	Det Ratio	Recorded Crimes SPLY	Diff	% Change
THE FORCE	25,843	9,965	38.6%	27,586	- 1,743	- 6.3%
Carmarthenshire	9,474	3,548	37.4%	10,655	- 1,181	- 11.1%
Ammanford (AA)	1,199	508	42.4%	1,235	- 36	- 2.9%
Carmarthen (AC)	2,250	927	41.2%	2,571	- 321	- 12.5%
Llanelli (AL)	4,692	1,621	34.5%	5,460	- 768	- 14.1%
Towy Gwendraeth (AT)	1,333	492	36.9%	1,389	- 56	- 4.0%
Ceredigion	3,591	1,476	41.1%	3,802	- 211	- 5.5%
Aberystwyth (BA)	1,933	844	43.7%	1,977	- 44	- 2.2%
Aberaeron (BB)	357	128	35.9%	463	- 106	- 22.9%
Cardigan (BC)	854	323	37.8%	918	- 64	- 7.0%
Lampeter (BL)	447	181	40.5%	444	+ 3	+ 0.7%
Pembrokeshire	6,622	2,512	37.9%	7,112	- 490	- 6.9%
Fishguard (CF)	780	290	37.2%	813	- 33	- 4.1%
Haverfordwest (CH)	1,690	699	41.4%	1,887	- 197	- 10.4%
Milford Haven (CM)	1,260	503	39.9%	1,472	- 212	- 14.4%
Pembroke Dock (CP)	1,707	592	34.7%	1,584	+ 123	+ 7.8%
Tenby (CT)	1,185	428	36.1%	1,356	- 171	- 12.6%
Powys	6,156	2,429	39.5%	6,017	+ 139	+ 2.3%
Brecon (DB)	1,571	599	38.1%	1,379	+ 192	+ 13.9%
Llandrindod Wells (DL)	1,142	452	39.6%	1,190	- 48	- 4.0%
Newtown (DN)	1,938	745	38.4%	1,725	+ 213	+ 12.3%
Welshpool (DW)	1,030	441	42.8%	1,154	- 124	- 10.7%
Ystradgynlais (DY)	475	192	40.4%	569	- 94	- 16.5%

Sanction Detection Performance January 2006 YTD: Domestic Burglary, Violent Crime & Vehicle Crime

Sanction Detections	Total Domestic Burglary			Total Violent Crime			Total Vehicle Crime		
	Recorded Crimes	Detected	Det Ratio	Recorded Crimes	Detected	Det Ratio	Recorded Crimes	Detected	Det Ratio
THE FORCE	673	156	23.2%	7,068	3,723	52.7%	1,595	264	16.6%
Carmarthenshire	294	73	24.8%	2,507	1,280	51.1%	677	100	14.8%
Ammanford (AA)	24	9	37.5%	249	125	50.2%	93	14	15.1%
Carmarthen (AC)	43	8	18.6%	643	372	57.9%	130	22	16.9%
Llanelli (AL)	182	41	22.5%	1,276	605	47.4%	362	47	13.0%
Towy Gwendraeth (AT)	45	15	33.3%	339	178	52.5%	92	17	18.5%
Ceredigion	78	17	21.8%	902	476	52.8%	178	30	16.9%
Aberystwyth (BA)	47	11	23.4%	475	270	56.8%	83	14	16.9%
Aberaeron (BB)	3	2	66.7%	90	49	54.4%	24	1	4.2%
Cardigan (BC)	22	3	13.6%	226	106	46.9%	39	6	15.4%
Lampeter (BL)	6	1	16.7%	111	51	45.9%	32	9	28.1%
Pembrokeshire	151	35	23.2%	1,725	888	51.5%	397	75	18.9%
Fishguard (CF)	13	4	30.8%	197	94	47.7%	45	6	13.3%
Haverfordwest (CH)	48	10	20.8%	525	258	49.1%	58	11	19.0%
Milford Haven (CM)	27	9	33.3%	345	183	53.0%	62	17	27.4%
Pembroke Dock (CP)	39	5	12.8%	394	190	48.2%	109	10	9.2%
Tenby (CT)	24	7	29.2%	264	163	61.7%	123	31	25.2%
Powys	150	31	20.7%	1,934	1,079	55.8%	343	59	17.2%
Brecon (DB)	22	2	9.1%	474	288	60.8%	99	12	12.1%
Llandrindod Wells (DL)	35	10	28.6%	371	225	60.6%	52	12	23.1%
Newtown (DN)	64	14	21.9%	649	310	47.8%	86	13	15.1%
Welshpool (DW)	23	5	21.7%	287	172	59.9%	61	16	26.2%
Ystradgynlais (DY)	6	0	0.0%	153	84	54.9%	45	6	13.3%

Target Contribution Summary - Carmarthenshire

DYFED-POWYS POLICE

GREEN/RED indicates current performance **consistent** or **not consistent** with force target reduction & detection rate

CARMARTHENSHERE		April-January YTD		Last Year		Indicator
CRIME	Performance	Indicator	Performance	Indicator	Change & Detection	
Total Crime Recorded (per 1,000 population)	9474	54.8	10658	61.7	-11.1%	
Total Detections (% rate)	4016	42.4%	4131	38.8%	42.4%	
Burglary Dwelling (per 1,000 households)	294	4.0	400	5.5	-26.5%	
Total Detections (% rate)	73	24.8%	98	24.5%	24.8%	
Total Violent Crime (per 1,000 population)	2507	14.5	2764	16.0	-9.3%	
Total Detections (% rate)	1543	61.5%	1617	58.5%	61.5%	
Autocrime per (1,000 population)	677	3.9	846	4.9	-20.0%	
Total Detections (% rate)	105	15.5%	169	20.0%	15.5%	
Ammanford		April-January YTD		Last Year		Indicator
CRIME	Performance	Indicator	Performance	Indicator	Change & Detection	
Total Crime Recorded (per 1,000 population)	1199	36.7	1235	37.8	-2.9%	
Total Detections (% rate)	568	47.4%	573	46.4%	47.4%	
Burglary Dwelling (per 1,000 households)	24	1.7	36	2.6	-33.3%	
Total Detections (% rate)	9	37.5%	11	30.6%	37.5%	
Total Violent Crime (per 1,000 population)	249	7.6	348	10.7	-28.4%	
Total Detections (% rate)	148	59.4%	222	63.8%	59.4%	
Autocrime per (1,000 population)	93	2.8	81	2.5	14.8%	
Total Detections (% rate)	15	16.1%	13	16.0%	16.1%	
Carmarthen		April-January YTD		Last Year		Indicator
CRIME	Performance	Indicator	Performance	Indicator	Change & Detection	
Total Crime Recorded (per 1,000 population)	2250	45.5	2567	51.9	-12.3%	
Total Detections (% rate)	1030	45.8%	1144	44.6%	45.8%	
Burglary Dwelling (per 1,000 households)	43	2.1	57	2.7	-24.6%	
Total Detections (% rate)	8	18.6%	8	14.0%	18.6%	
Total Violent Crime (per 1,000 population)	643	13.0	713	14.4	-9.8%	
Total Detections (% rate)	434	67.5%	442	62.0%	67.5%	
Autocrime per (1,000 population)	130	2.6	120	2.4	8.3%	
Total Detections (% rate)	22	16.9%	20	16.7%	16.9%	
Llanelli		April-January YTD		Last Year		Indicator
CRIME	Performance	Indicator	Performance	Indicator	Change & Detection	
Total Crime Recorded (per 1,000 population)	4689	77.5	5462	90.3	-14.2%	
Total Detections (% rate)	1875	40.0%	1873	34.3%	40.0%	
Burglary Dwelling (per 1,000 households)	181	6.9	241	9.2	-24.9%	
Total Detections (% rate)	41	22.7%	62	25.7%	22.7%	
Total Violent Crime (per 1,000 population)	1275	21.1	1379	22.8	-7.5%	
Total Detections (% rate)	761	59.7%	754	54.7%	59.7%	
Autocrime per (1,000 population)	361	6.0	522	8.6	-30.8%	
Total Detections (% rate)	50	13.9%	117	22.4%	13.9%	
Towv/Gwendraeth		April-January YTD		Last Year		Indicator
CRIME	Performance	Indicator	Performance	Indicator	Change & Detection	
Total Crime Recorded (per 1,000 population)	1333	44.1	1390	46.0	-4.1%	
Total Detections (% rate)	543	40.7%	539	38.8%	40.7%	
Burglary Dwelling (per 1,000 households)	45	3.6	66	5.3	-31.8%	
Total Detections (% rate)	15	33.3%	17	25.8%	33.3%	
Total Violent Crime (per 1,000 population)	339	11.2	323	10.7	5.0%	
Total Detections (% rate)	200	59.0%	198	61.3%	59.0%	
Autocrime per (1,000 population)	92	3.0	123	4.1	-25.2%	
Total Detections (% rate)	18	19.6%	19	15.4%	19.6%	

Target Contribution Summary - Ceredigion

DYFED-POWYS POLICE

GREEN/RED indicates current performance **consistent** or **not consistent** with force target reduction & detection rate

CEREDIGION		April-January YTD		Last Year		Indicator
CRIME	Performance	Indicator	Performance	Indicator	Change & Detection	
Total Crime Recorded (per 1,000 population)	3591	47.9	3802	50.7	-5.5%	
Total Detections (% rate)	1724	48.0%	1608	42.3%	48.0%	
Burglary Dwelling (per 1,000 households)	78	2.5	106	3.4	-26.4%	
Total Detections (% rate)	17	21.8%	24	22.6%	21.8%	
Total Violent Crime (per 1,000 population)	902	12.0	1164	15.5	-22.5%	
Total Detections (% rate)	623	69.1%	605	52.0%	69.1%	
Autocrime per (1,000 population)	178	2.4	184	2.5	-3.3%	
Total Detections (% rate)	34	19.1%	40	21.7%	19.1%	
Ceredigion North		April-January YTD		Last Year		Indicator
CRIME	Performance	Indicator	Performance	Indicator	Change & Detection	
Total Crime Recorded (per 1,000 population)	1933	60.8	1976	62.1	-2.2%	
Total Detections (% rate)	935	48.4%	899	45.5%	48.4%	
Burglary Dwelling (per 1,000 households)	47	3.8	34	2.7	38.2%	
Total Detections (% rate)	11	23.4%	10	29.4%	23.4%	
Total Violent Crime (per 1,000 population)	475	14.9	612	19.2	-22.4%	
Total Detections (% rate)	331	69.7%	328	53.6%	69.7%	
Autocrime per (1,000 population)	83	2.6	77	2.4	7.8%	
Total Detections (% rate)	15	18.1%	15	19.5%	18.1%	
Ceredigion South		April-January YTD		Last Year		Indicator
CRIME	Performance	Indicator	Performance	Indicator	Change & Detection	
Total Crime Recorded (per 1,000 population)	1658	38.6	1826	42.5	-9.2%	
Total Detections (% rate)	789	47.6%	709	38.8%	47.6%	
Burglary Dwelling (per 1,000 households)	31	1.7	72	3.9	-56.9%	
Total Detections (% rate)	6	19.4%	14	19.4%	19.4%	
Total Violent Crime (per 1,000 population)	427	9.9	552	12.9	-22.6%	
Total Detections (% rate)	292	68.4%	277	50.2%	68.4%	
Autocrime per (1,000 population)	95	2.2	107	2.5	-11.2%	
Total Detections (% rate)	19	20.0%	25	23.4%	20.0%	

Ceredigion South is an area used for comparison purposes only. It incorporates the three section areas of Lampeter/Aberaeron and Cardigan. Details on these three discrete areas are also included here for information.

Aberaeron		April-January YTD		Last Year		Indicator
CRIME	Performance	Indicator	Performance	Indicator	Change & Detection	
Total Crime Recorded (per 1,000 population)	357	28.2	463	36.5	-22.9%	
Total Detections (% rate)	148	41.5%	168	36.3%	41.5%	
Burglary Dwelling (per 1,000 households)	3	0.5	21	3.8	-85.7%	
Total Detections (% rate)	2	66.7%	3	14.3%	66.7%	
Total Violent Crime (per 1,000 population)	90	7.1	121	9.5	-25.6%	
Total Detections (% rate)	55	61.1%	61	50.4%	61.1%	
Autocrime per (1,000 population)	24	1.9	20	1.6	20.0%	
Total Detections (% rate)	2	8.3%	5	25.0%	8.3%	
Cardigan		April-January YTD		Last Year		Indicator
CRIME	Performance	Indicator	Performance	Indicator	Change & Detection	
Total Crime Recorded (per 1,000 population)	854	45.3	918	48.7	-7.0%	
Total Detections (% rate)	394	46.1%	365	39.8%	46.1%	
Burglary Dwelling (per 1,000 households)	22	2.7	32	3.9	-31.3%	
Total Detections (% rate)	3	13.6%	7	21.9%	13.6%	
Total Violent Crime (per 1,000 population)	226	12.0	289	15.3	-21.8%	
Total Detections (% rate)	157	69.5%	146	50.5%	69.5%	
Autocrime per (1,000 population)	39	2.1	50	2.7	-22.0%	
Total Detections (% rate)	6	15.4%	11	22.0%	15.4%	
Lampeter		April-January YTD		Last Year		Indicator
CRIME	Performance	Indicator	Performance	Indicator	Change & Detection	
Total Crime Recorded (per 1,000 population)	447	38.6	445	38.4	0.4%	
Total Detections (% rate)	247	55.3%	176	39.6%	55.3%	
Burglary Dwelling (per 1,000 households)	6	1.3	19	4.0	-68.4%	
Total Detections (% rate)	1	16.7%	4	21.1%	16.7%	
Total Violent Crime (per 1,000 population)	111	9.6	142	12.3	-21.8%	
Total Detections (% rate)	80	72.1%	70	49.3%	72.1%	
Autocrime per (1,000 population)	32	2.8	37	3.2	-13.5%	
Total Detections (% rate)	11	34.4%	9	24.3%	34.4%	

Target Contribution Summary - Pembrokeshire

DYFED-POWYS POLICE

GREEN/RED indicates current performance **consistent** or **not consistent** with force target reduction & total detection rate

PEMBROKESHIRE		April-January YTD		Last Year		Indicator
CRIME	Performance	Indicator	Performance	Indicator	Change & Detection	
Total Crime Recorded (per 1,000 population)	6622	58.0	7114	62.3	-6.9%	
Total Detections (% rate)	2973	44.9%	2980	41.9%	44.9%	
Burglary Dwelling (per 1,000 households)	151	3.1	222	4.6	-32.0%	
Total Detections (% rate)	40	26.5%	54	24.3%	26.5%	
Total Violent Crime (per 1,000 population)	1725	15.1	1971	17.3	-12.5%	
Total Detections (% rate)	1157	67.1%	1231	62.5%	67.1%	
Autocrime per (1,000 population)	397	3.5	559	4.9	-29.0%	
Total Detections (% rate)	82	20.7%	104	18.6%	20.7%	
Fishguard		April-January YTD		Last Year		Indicator
CRIME	Performance	Indicator	Performance	Indicator	Change & Detection	
Total Crime Recorded (per 1,000 population)	780	29.5	813	30.7	-4.1%	
Total Detections (% rate)	361	46.3%	372	45.8%	46.3%	
Burglary Dwelling (per 1,000 households)	13	1.2	28	2.5	-53.6%	
Total Detections (% rate)	5	38.5%	11	39.3%	38.5%	
Total Violent Crime (per 1,000 population)	197	7.4	196	7.4	0.5%	
Total Detections (% rate)	137	69.5%	136	69.4%	69.5%	
Autocrime per (1,000 population)	45	1.7	77	2.9	-41.6%	
Total Detections (% rate)	8	17.8%	21	27.3%	17.8%	
Haverfordwest		April-January YTD		Last Year		Indicator
CRIME	Performance	Indicator	Performance	Indicator	Change & Detection	
Total Crime Recorded (per 1,000 population)	1690	84.5	1887	94.4	-10.4%	
Total Detections (% rate)	813	48.1%	844	44.7%	48.1%	
Burglary Dwelling (per 1,000 households)	48	5.7	67	7.9	-28.4%	
Total Detections (% rate)	12	25.0%	12	17.9%	25.0%	
Total Violent Crime (per 1,000 population)	525	26.3	573	28.7	-8.4%	
Total Detections (% rate)	333	63.4%	345	60.2%	63.4%	
Autocrime per (1,000 population)	58	2.9	124	6.2	-53.2%	
Total Detections (% rate)	11	19.0%	20	16.1%	19.0%	
Milford Haven		April-January YTD		Last Year		Indicator
CRIME	Performance	Indicator	Performance	Indicator	Change & Detection	
Total Crime Recorded (per 1,000 population)	1260	51.6	1473	60.4	-14.5%	
Total Detections (% rate)	585	46.4%	660	44.8%	46.4%	
Burglary Dwelling (per 1,000 households)	27	2.7	34	3.3	-20.6%	
Total Detections (% rate)	12	44.4%	14	41.2%	44.4%	
Total Violent Crime (per 1,000 population)	345	14.1	408	16.7	-15.4%	
Total Detections (% rate)	237	68.7%	270	66.2%	68.7%	
Autocrime per (1,000 population)	62	2.5	97	4.0	-36.1%	
Total Detections (% rate)	21	33.9%	36	37.1%	33.9%	
Pembroke Dock		April-January YTD		Last Year		Indicator
CRIME	Performance	Indicator	Performance	Indicator	Change & Detection	
Total Crime Recorded (per 1,000 population)	1707	89.3	1584	82.9	7.8%	
Total Detections (% rate)	724	42.4%	583	36.8%	42.4%	
Burglary Dwelling (per 1,000 households)	39	4.8	44	5.5	-11.4%	
Total Detections (% rate)	5	12.8%	6	13.6%	12.8%	
Total Violent Crime (per 1,000 population)	394	20.6	429	22.5	-8.2%	
Total Detections (% rate)	253	64.2%	260	60.6%	64.2%	
Autocrime per (1,000 population)	109	5.7	164	8.6	-33.5%	
Total Detections (% rate)	11	10.1%	12	7.3%	10.1%	
Tenby		April-January YTD		Last Year		Indicator
CRIME	Performance	Indicator	Performance	Indicator	Change & Detection	
Total Crime Recorded (per 1,000 population)	1185	49.1	1357	56.2	-12.7%	
Total Detections (% rate)	490	41.4%	521	38.4%	41.4%	
Burglary Dwelling (per 1,000 households)	24	2.3	48	4.7	-50.0%	
Total Detections (% rate)	7	29.2%	11	22.9%	29.2%	
Total Violent Crime (per 1,000 population)	264	10.9	365	15.1	-27.7%	
Total Detections (% rate)	197	74.6%	220	60.3%	74.6%	
Autocrime per (1,000 population)	123	5.1	97	4.0	26.8%	
Total Detections (% rate)	31	25.2%	15	15.5%	25.2%	

Target Contribution Summary - Powys

DYFED-POWYS POLICE

GREEN/RED indicates current performance **consistent** or **not consistent** with force target reduction & detection rate

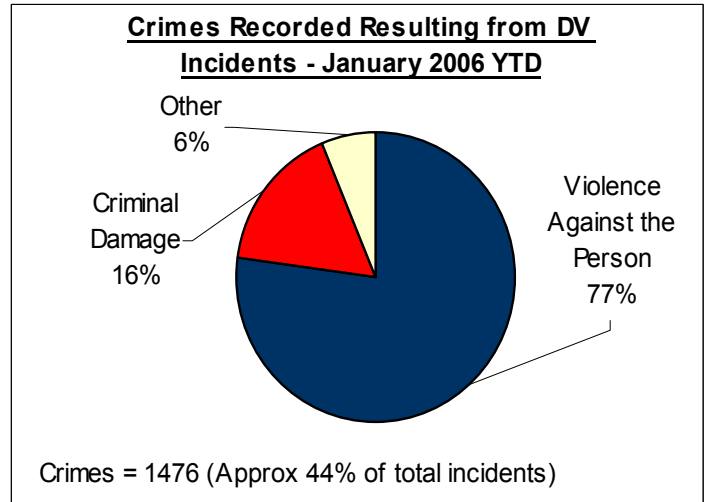
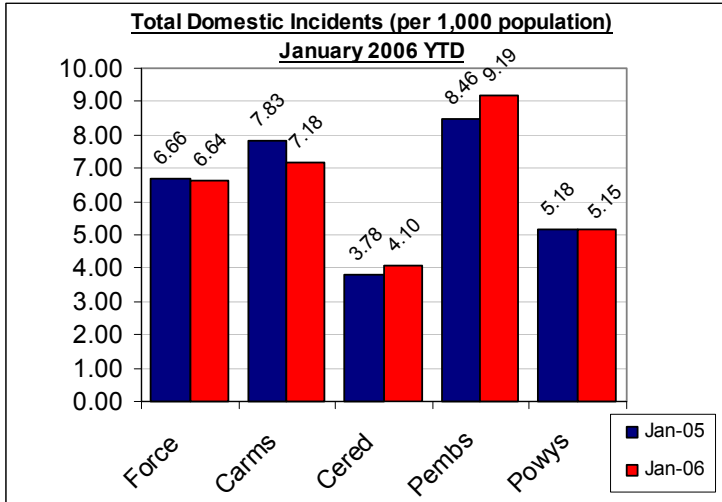
POWYS		April-January YTD		Last Year		Indicator
CRIME	Performance	Indicator	Performance	Indicator	Change & Detection	
Total Crime Recorded (per 1,000 population)	6156	48.7	6018	47.6	2.3%	
Total Detections (% rate)	2802	45.5%	2506	41.6%	45.5%	
Burglary Dwelling (per 1,000 households)	150	2.8	198	3.7	-24.2%	
Total Detections (% rate)	32	21.3%	33	16.7%	21.3%	
Total Violent Crime (per 1,000 population)	1934	15.3	1699	13.4	13.8%	
Total Detections (% rate)	1301	67.3%	1068	62.9%	67.3%	
Autocrime per (1,000 population)	343	2.7	429	3.4	-20.0%	
Total Detections (% rate)	63	18.4%	96	22.4%	18.4%	
Brecon		April-January YTD		Last Year		Indicator
CRIME	Performance	Indicator	Performance	Indicator	Change & Detection	
Total Crime Recorded (per 1,000 population)	1571	61.4	1380	53.9	13.8%	
Total Detections (% rate)	702	44.7%	576	41.7%	44.7%	
Burglary Dwelling (per 1,000 households)	22	2.1	31	2.9	-29.0%	
Total Detections (% rate)	2	9.1%	7	22.6%	9.1%	
Total Violent Crime (per 1,000 population)	474	18.5	389	15.2	21.9%	
Total Detections (% rate)	347	73.2%	251	64.5%	73.2%	
Autocrime per (1,000 population)	99	3.9	110	4.3	-10.0%	
Total Detections (% rate)	12	12.1%	22	20.0%	12.1%	
Llandrindod Wells		April-January YTD		Last Year		Indicator
CRIME	Performance	Indicator	Performance	Indicator	Change & Detection	
Total Crime Recorded (per 1,000 population)	1142	40.5	1190	42.2	-4.0%	
Total Detections (% rate)	536	46.9%	541	45.5%	46.9%	
Burglary Dwelling (per 1,000 households)	34	2.8	55	4.5	-38.2%	
Total Detections (% rate)	10	29.4%	10	18.2%	29.4%	
Total Violent Crime (per 1,000 population)	371	13.1	345	12.2	7.5%	
Total Detections (% rate)	277	74.7%	231	67.0%	74.7%	
Autocrime per (1,000 population)	52	1.8	73	2.6	-28.8%	
Total Detections (% rate)	14	26.9%	11	15.1%	26.9%	
Newtown		April-January YTD		Last Year		Indicator
CRIME	Performance	Indicator	Performance	Indicator	Change & Detection	
Total Crime Recorded (per 1,000 population)	1938	55.2	1725	49.1	12.3%	
Total Detections (% rate)	852	44.0%	623	36.1%	44.0%	
Burglary Dwelling (per 1,000 households)	64	4.3	81	5.4	-21.0%	
Total Detections (% rate)	15	23.4%	8	9.9%	23.4%	
Total Violent Crime (per 1,000 population)	649	18.5	493	14.0	31.6%	
Total Detections (% rate)	377	58.1%	278	56.4%	58.1%	
Autocrime per (1,000 population)	86	2.4	91	2.6	-5.5%	
Total Detections (% rate)	13	15.1%	19	20.9%	15.1%	
Welshpool		April-January YTD		Last Year		Indicator
CRIME	Performance	Indicator	Performance	Indicator	Change & Detection	
Total Crime Recorded (per 1,000 population)	1030	40.3	1154	45.2	-10.7%	
Total Detections (% rate)	491	47.7%	486	42.1%	47.7%	
Burglary Dwelling (per 1,000 households)	23	2.2	21	2.0	9.5%	
Total Detections (% rate)	5	21.7%	3	14.3%	21.7%	
Total Violent Crime (per 1,000 population)	287	11.2	297	11.6	-3.4%	
Total Detections (% rate)	199	69.3%	191	64.3%	69.3%	
Autocrime per (1,000 population)	61	2.4	93	3.6	-34.4%	
Total Detections (% rate)	18	29.5%	30	32.3%	29.5%	
Ystradgynlais		April-January YTD		Last Year		Indicator
CRIME	Performance	Indicator	Performance	Indicator	Change & Detection	
Total Crime Recorded (per 1,000 population)	475	40.0	569	47.9	-16.5%	
Total Detections (% rate)	221	46.5%	280	49.2%	46.5%	
Burglary Dwelling (per 1,000 households)	5	1.0	9	1.8	-44.4%	
Total Detections (% rate)	0	0.0%	4	44.4%	0.0%	
Total Violent Crime (per 1,000 population)	153	12.9	175	14.7	-12.6%	
Total Detections (% rate)	101	66.0%	117	66.9%	66.0%	
Autocrime per (1,000 population)	45	3.8	62	5.2	-27.4%	
Total Detections (% rate)	6	13.3%	14	22.6%	13.3%	

Domestic Incidents

DYFED POWYS POLICE

SPI 8A TARGET - 80% OF INCIDENTS (WITH A POWER OF ARREST) LEADING TO ARREST
LOCAL TARGET - 30% OF TOTAL INCIDENTS INVOLVING REPEAT VICTIMS

Please note figures provided here are provisional only. For the latest detailed information please contact your local Public Protection Unit (PPU) for further details.



Section & Divisional Summary – January 2006 YTD

Section	Incidents		Arrests		Sanction Detections			Repeat Victims	Apr-Jan 2005 (SPLY)	
	Total Incidents	Power Of Arrest	Arrests where POA	% POA	Crimes	Sanction Detections	% Sanction Detection	% Repeats (12mths data)	Total Incidents	Annual % Change
Ammanford (AA)	148	61	45	73.8%	62	30	48.4%	13.6%	224	-33.9%
Carmarthen (AC)	254	115	99	86.1%	111	51	45.9%	17.5%	274	-7.3%
Llanelli (AL)	674	300	233	77.7%	321	145	45.2%	24.3%	678	-0.6%
Towy Gwendraeth (AT)	200	87	73	83.9%	71	41	57.7%	19.6%	215	-7.0%
Carmarthenshire	1276	563	450	79.9%	565	267	47.3%	21.0%	1391	-8.3%
Aberystwyth (BA)	178	88	83	94.3%	76	41	53.9%	13.9%	153	16.3%
Aberaeron (BB)	24	15	12	80.0%	13	6	46.2%	22.6%	37	-35.1%
Cardigan (BC)	77	38	30	78.9%	43	19	44.2%	17.6%	81	-4.9%
Lampeter (BL)	41	20	18	90.0%	21	10	47.6%	15.9%	24	70.8%
Ceredigion	320	161	143	88.8%	153	76	49.7%	15.9%	295	8.5%
Fishguard (CF)	150	63	56	88.9%	65	32	49.2%	29.4%	114	31.6%
Haverfordwest (CH)	251	111	82	73.9%	105	35	33.3%	34.8%	248	1.2%
Milford Haven (CM)	253	97	75	77.3%	89	44	49.4%	32.0%	214	18.2%
Pembroke Dock (CP)	290	134	105	78.4%	101	44	43.6%	26.1%	293	-1.0%
Tenby (CT)	134	64	55	85.9%	56	30	53.6%	24.7%	123	8.9%
Pembrokeshire	1078	469	373	79.5%	416	185	44.5%	29.7%	992	8.7%
Brecon (DB)	139	63	61	96.8%	64	28	43.8%	20.2%	160	-13.1%
Llandrindod Wells (DL)	117	56	52	92.9%	61	33	54.1%	27.6%	117	0.0%
Newtown (DN)	224	98	91	92.9%	115	50	43.5%	19.0%	198	13.1%
Welshpool (DW)	105	41	39	95.1%	60	31	51.7%	22.8%	113	-7.1%
Ystradgynlais (DY)	88	37	35	94.6%	42	21	50.0%	20.6%	89	-1.1%
Powys	673	295	278	94.2%	342	163	47.7%	21.6%	677	-0.6%
Force	3347	1488	1244	83.6%	1476	691	46.8%	23.4%	3355	-0.2%

The introduction of the Serious Organised Crime and Police Act 2005 (SOCPA) on 01/01/06 has resulted in the withdrawal of the term 'power of arrest'. As a consequence of this it has ceased to be a discrete measure of performance with respect to domestic incidents. The performance illustrated here for Apr-Dec 2005 will therefore remain the end of year performance for 2005/06.

Source: LCS Recorded Domestic Incident Details (extracted 07/02/06)

NB – Repeat Victims performance based on 12-months incident data and not fiscal year-to-date

User Satisfaction

CITIZEN FOCUS PERFORMANCE ASSESSMENT DOMAIN

TARGET 2005/06

These measures constitute the citizen focus domain in the police performance assessment framework. All victims of crimes (domestic burglary, violent crime and vehicle crime only) or those involved in road traffic collisions are surveyed within a short period of coming into contact with the force to gain their views on the service they received.

For performance assessment purposes, these measurements of user satisfaction are grouped into five main themes, which are:

- SPI 1a – Satisfaction with making contact with the police: 'Ease of Contact'
- SPI 1b – Satisfaction with the action taken by the police: 'Actions'
- SPI 1c – Satisfaction with being kept informed of progress: 'Follow-Up'
- SPI 1d – Satisfaction with their treatment by staff: 'Treatment'
- SPI 1e – Satisfaction with the overall service provided: 'Whole Experience'

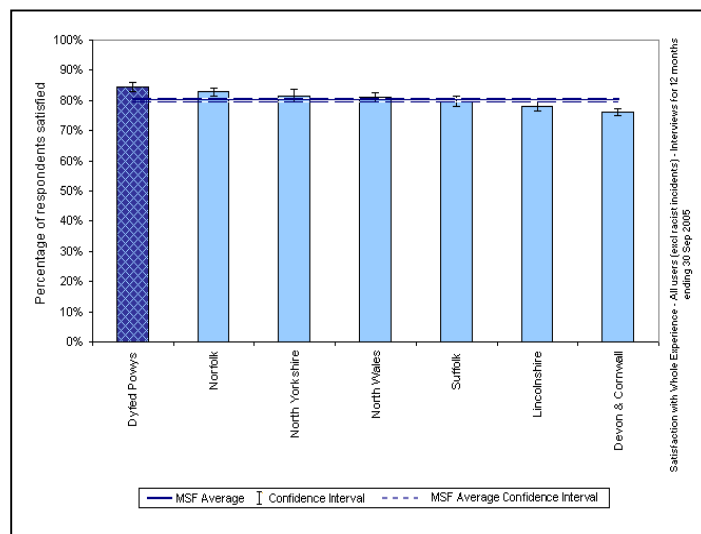
Force User Satisfaction – Year Ending September 2005

Comparative User Satisfaction

Satisfaction with...	DPP Force	MSF Average	Difference
Ease of Contact	92.3%	89.2%	3.1%
Actions	83.9%	78.3%	5.6%
Follow-up	70.4%	63.6%	6.8%
Treatment	91.2%	89.5%	1.7%
Whole experience	84.4%	80.3%	4.1%

Source: Home Office / Iquanta, January 2006

MSF – Comparative Force Performance - Whole Experience



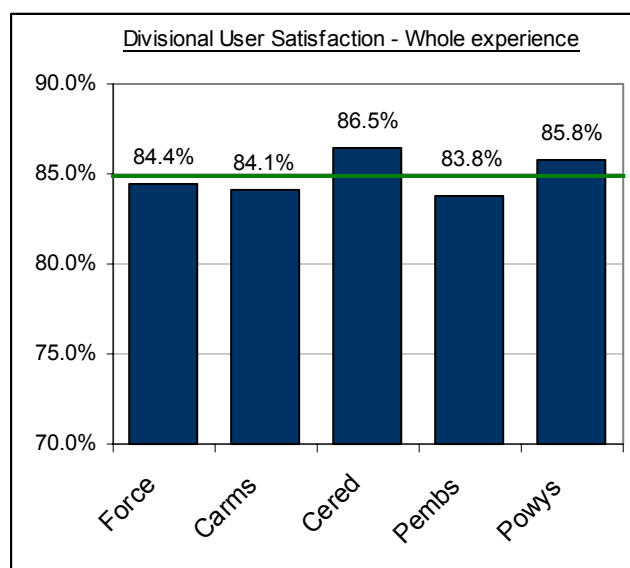
Source: Home Office / Iquanta, January 2006

Divisional User Satisfaction – Year Ending September 2005 (Oct 04 – Sept 05)

BCU user Satisfaction Summary

Year Ending Sept 2005	% Satisfied (Very, Completely and Fairly Satisfied)					Target
	Force	Carms	Cered	Pembs	Powys	
Ease of Contact	92.3%	94.0%	91.8%	88.0%	93.1%	92%
Actions	83.9%	84.7%	82.0%	82.5%	85.8%	84%
Follow-up	70.4%	72.3%	74.6%	67.0%	70.6%	70%
Treatment	91.2%	90.8%	92.0%	91.1%	92.3%	92%
Whole experience	84.4%	84.1%	86.5%	83.8%	85.8%	85%

Source: Home Office / Iquanta, January 2006

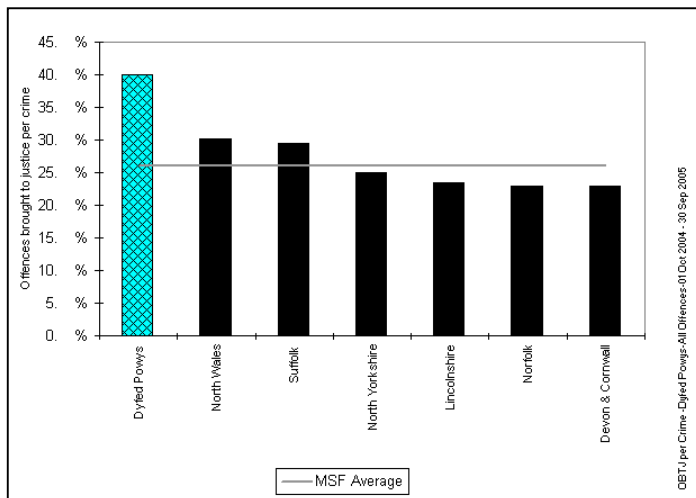
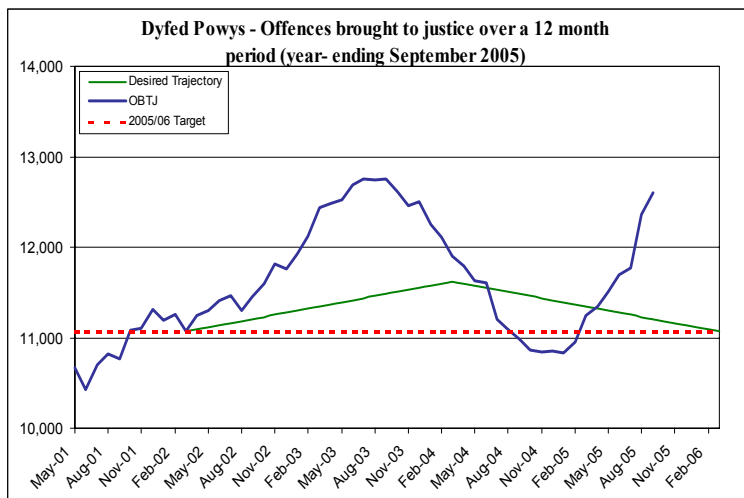


Additional comparative data is available on a quarterly basis. For further information on this or Iquanta contact Corporate Services (ext 6654).

Narrowing the Justice Gap - OFFENCES BROUGHT TO JUSTICE & SANCTION DETECTIONS

TARGET 2005/06 : 11,068 total OBTJ (Offences Brought to Justice)

Total Offences Brought to Justice (OBTJ) – Force & MSF Comparisons



Offences brought to justice – 12 monthly data	TIC	PND	Formal Warnings	Cautions	Convictions	OBTJ
Baseline: Apr 01 – Mar 02	420	-	-	3,698	6,900	11,068
Latest Annual Data : October 04 – September 05	550	670	1,233	3,956	6,189	12,598
Change	+31%	-	-	+7%	-10%	+14%
2005/06 Force Target (0%- 11,068 OBTJ)	YES	n/a	YES	YES	NO	YES

Divisional Contribution Toward OBTJ Volumes – Approximate Latest

Please note this data is provided as a guide only - it is provided here for information.

Approx OBTJ YTD	Sep-05	6 Mnth Target**	Diff from Target
Carmarthenshire	2397	1988	20.6%
Ceredigion	981	868	13.0%
Pembrokeshire	1696	1471	15.3%
Powys	1711	1208	41.6%
Force	6785	5535	22.6%

Target Pro-Rata Based on 6 months performance

** - This is the target profile required to attain the end of year target of 11,068 OBTJ. (The divisional target breakdown is based on mirroring 2004/05 contribution toward total force sanction detections).

Sanction Detection Volume Performance YTD – Current Clear-Up Breakdown (Annual % Change)

The current volume of sanction detections (January 06 YTD) is up 19% on the same period last year to stand at 9,965 (up 1,563 from 8,402*).

Area – January YTD	Charged	Summons	Cautioned	TIC	PND	F. Warning for Cannabis*	Total Sanction Dets
Carmarthenshire	1694 (+7%)	51 (-14%)	1136 (+48%)	116 (-43%)	212 (90 SPLY)	339 (+15%)	3548 (+19%)
Ceredigion	698 (+6%)	54 (+25%)	540 (+18%)	46(+24%)	39 (19 SPLY)	99 (-15%)	1476 (+11%)
Pembrokeshire	1066 (+2%)	59 (+11%)	942 (+13%)	154 (59 SPLY)	147 (78 SPLY)	144 (-8%)	2512 (+13%)
Powys	1055 (+6%)	103 (+66%)	860 (+37%)	83 (+30%)	221 (41 SPLY)	107 (+70%)	2429 (+30%)
Force	4513 (+5%)	267 (+23%)	3478 (+30%)	399(+9%)	619 (228 SPLY)	689 (+9%)	9965 (+19%)

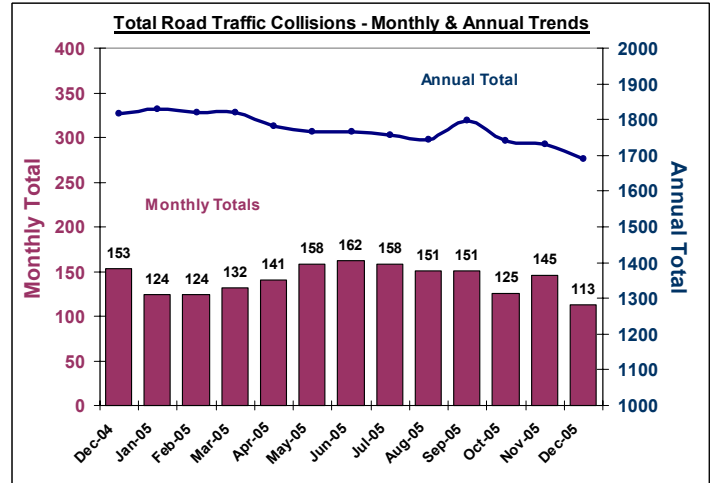
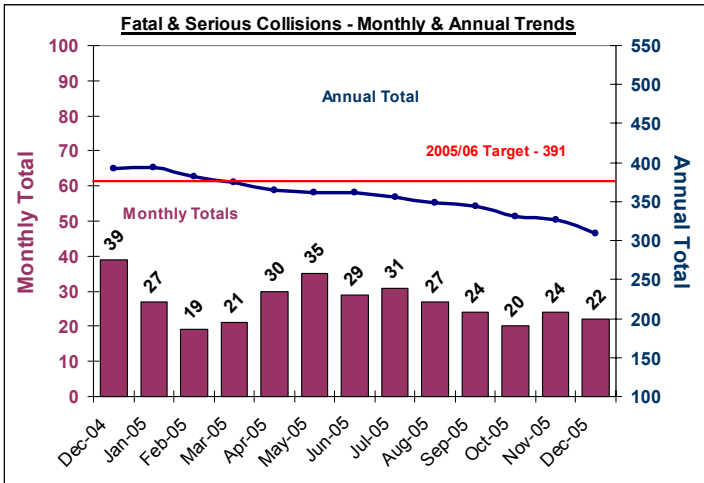
* - SPLY Data Approximate

Road Traffic Collisions

November Monthly Data Latest available

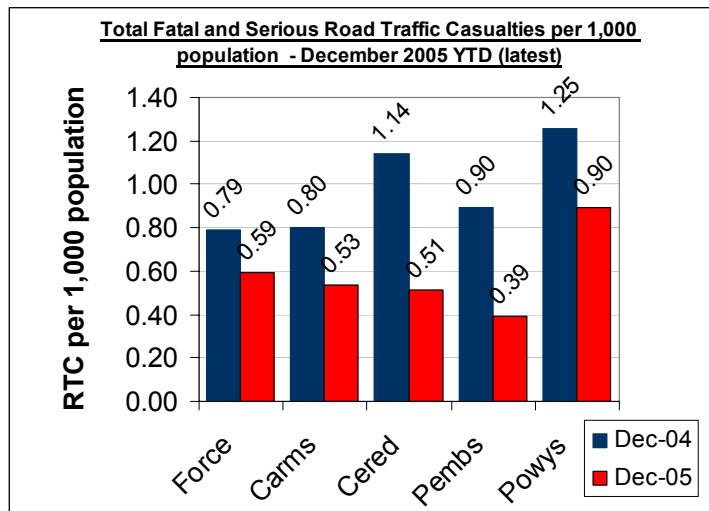
TARGET 2005/06 : 391 FATAL AND SERIOUS COLLISIONS (0.8 PER 1,000 POPULATION) – USING 2004 MID -YEAR ESTIMATES

Road Traffic Collisions – Monthly & Annual Trends (December 05 - latest data)



Performance YTD (December 2005 YTD - latest)	FORCE	Carms	Cered	Pembs	Powys
Fatal Road Collisions YTD	35	14	2	3	16
Serious & Fatal Road Collisions YTD	242	75	35	37	95
Indicator - Per 1,000 population	0.48	0.42	0.45	0.32	0.73
On-Target (0.8 end of year – 0.59 pro-rata)	YES	YES	YES	YES	NO
Fatal (SPLY)	39	11	6	5	17
Serious & Fatal (SPLY)	323	99	61	64	99

Road Traffic Casualties – 2010 Target Progress



December 2005 YTD (latest)	Force	Carms	Cered	Pembs	Powys
Number of people killed or seriously injured casualties	298	95	40	46	117
At 2010 Target Level*	YES	YES	YES	YES	YES
Number of Children (<=15 yrs) killed or seriously injured	16	8	4	1	3
At 2010 Target Level*	YES	YES	YES	YES	YES
Number of persons with slight injuries	1653	603	279	373	398
At 2010 Target Level*	NO	NO	NO	NO	NO

* 2010 Targets Established with Roads Policing Strategy, Operations Dept & National Road Policing Targets. Progress towards Pro-Rata year-end 2010 target illustrated here

Source: MAAP RTC Database 08/02/06

PPAF Statutory Performance Indicator Summary

Reported Quarterly

HOME OFFICE POLICE PERFORMANCE ASSESSMENT FRAMEWORK MEASURES

This Data is Updated Quarterly – Latest: April – December 2005 (except where stated).

Activity	SPI Number	Indicator Description	Apr-Dec 2004 Performance	Apr-Dec 2005 Performance	Change	2005/06 End of Year Target
User Satisfaction Measures	1a*	Satisfaction of victims of domestic burglary, violent crime, vehicle crime and road traffic collisions with respect to - a) making contact with the Police	90.8%	91.0%	0.1%	NEW
	1b*	b) action taken by the Police	82.5%	84.6%	2.0%	NEW
	1c*	c) Being kept informed of progress	67.8%	72.8%	5.1%	NEW
	1d*	d) Their treatment by staff	92.0%	91.5%	-0.5%	NEW
	1e*	e) the overall service provided	85.20%	85.8%	0.6%	NEW
Confidence	2a^	Using the BCS, the % of people who think their local police do a good job	NEW	NEW	-	NEW
Fairness and Equality Measures	3a*	Satisfaction of victims of racist incidents with respect to the overall service provided	84.7%	85.0%	0.3%	NEW
	3b*	From SPI 1(e), comparison of satisfaction for white users and users from visible minority ethnic groups with respect to the overall service provided.	White - 87.0% Ethnic - 83.4%	White - 85.1% Ethnic - 84.9%	White -1.9% Ethnic +1.5%	NEW
	3c(i)	(i) % of PACE stop/searches which lead to arrest by ethnicity	N/A	N/A	N/A	N/A
	3c(ii)	(ii) % of other (non-PACE) stop/searches which lead to arrest by ethnicity	N/A	N/A	N/A	N/A
	3d**	Comparison of percentage detected of violence against the person offences by ethnicity of the victim (sanction detections)	White - 59.9% Ethnic - 63.7%	White - 42.1% Ethnic - 37.6%	White -18% Ethnic -26%	White - 31% Ethnic - 31%
	3e*	Proportion of police recruits (ethnic) compared to the proportion of people from minority ethnic groups in the economically active population.	(No ethnic recruits)	(No ethnic recruits)	-	NEW
	3f*	Ratio of officers from minority ethnic groups resigning to all officer resignations	00:03	00:04	NEW	NEW
3g*	% of female police officers compared to overall Force strength.	18.7%	20.3%	1.6%	19%	
Measures of Crime Levels	4a^	Using the British Crime Survey (a) the risk of personal crime; and	4%	8%	4.0%	8%
	4b^	(b) the risk of household crime.	12%	11%	-1.0%	11%
	5a**	(a) Domestic Burglaries per 1,000 households.	4.07 (839 crimes)	3.05 (620 crimes)	-1.02 (-219 crimes)	5.06 (1042 crimes)
	5b**	(b) Violent crime per 1,000 population.	13.86 (6983 crimes)	12.88 (6489 crimes)	-0.98 (494 crimes)	17.60 (8593 crimes)
	5c**	(c) Robberies per 1,000 population.	0.063 (32 crimes)	0.062 (31 crimes)	-0.001 (-1 crime)	0.1 (48 crimes)
	5d**	(d) Vehicle crime per 1,000 population.	3.69 (1861 crimes)	2.91 (1464 crimes)	-0.78 (-397 crimes)	4.77 (2331 crimes)
	5e**	(e) Life threatening crime and gun crime per 1,000 population.	0.18 (91 crimes)	0.22 (111 crimes)	+0.04 (+20 crimes)	0.28
Offences Brought to Justice Measures (OBTJ)	6a**	Number of notifiable/recorded offences resulting in convictions, caution or taken into consideration at court	4,481	5,598	+1117 OBTJ (+24.9%)	11,068
	6b**	% of notifiable/recorded offences resulting in convictions, caution or taken into consideration at court	30.4%	40.1%	9.7%	NEW
Detection Measure	7a**	% of notifiable/recorded offences resulting in charge, summons, caution or taken into consideration at court ('sanction detections')	30.1%	37.9%	7.8%	31%
Domestic Violence Measures	8a**	Percentage of domestic violence incidents with a power of arrest where an arrest was made relating to the incident.	80.6% (906 arrests)	84.5% (1119 arrests)	+213 arrests	80%
Traffic Measures	9a(i)**	(i) Number of people killed in under 30 days or seriously injured in road traffic collisions	284 fatal or serious collisions	218 fatal or serious collisions	-66 collisions	391 fatal or serious collisions
	9a(ii)**	(ii) Number of persons killed or seriously injured in road traffic collisions per 100million vehicle kilometres travelled.	5.78	4.44	-1.34	8.13
Quality of life Measures	10a^	Using the British Crime Survey a) fear of crime	11%	9%	-2%	10%
	10b^	Perceptions of anti-social behaviour; and	NEW	NEW	NEW	NEW
	10c^	Perceptions of local drug use / drug dealing	NEW	NEW	NEW	NEW
Resource Use Measures	11a^	Percentage of police officer time spent on frontline duties	65.4%	-	-	68.5%
	12a	Delivery of cashable and non-cashable efficiency targets	NEW	NEW	NEW	NEW
	13a*	Average number of working hours lost due to sickness per police officer.	47.5 hours	38.3 hours	-19%	92.8 hours
	13b*	Average number of working hours lost due to sickness by police staff.	50.3 hours	35.9 hours	-28%	80.7 hours